



# Full wwPDB X-ray Structure Validation Report ⓘ

Mar 13, 2018 – 04:03 pm GMT

PDB ID : 2UYY  
Title : Structure of the cytokine-like nuclear factor n-pac  
Authors : Tickle, J.; Pilka, E.S.; Bunkoczi, G.; Berridge, G.; Smee, C.; Kavanagh, K.L.; Hozjan, V.; Niesen, F.H.; Papagrigoriou, E.; Pike, A.C.W.; Turnbull, A.; Arrowsmith, C.H.; Edwards, A.; Sundstrom, M.; Weigelt, J.; von Delft, F.; Oppermann, U.  
Deposited on : 2007-04-20  
Resolution : 2.50 Å (reported)

This is a Full wwPDB X-ray Structure Validation Report for a publicly released PDB entry.

We welcome your comments at [validation@mail.wwpdb.org](mailto:validation@mail.wwpdb.org)

A user guide is available at

<https://www.wwpdb.org/validation/2017/XrayValidationReportHelp>

with specific help available everywhere you see the ⓘ symbol.

---

The following versions of software and data (see [references ⓘ](#)) were used in the production of this report:

MolProbity : 4.02b-467  
Mogul : 1.7.3 (157068), CSD as539be (2018)  
Xtriage (Phenix) : 1.13  
EDS : trunk31020  
Percentile statistics : 20171227.v01 (using entries in the PDB archive December 27th 2017)  
Refmac : 5.8.0158  
CCP4 : 7.0 (Gargrove)  
Ideal geometry (proteins) : Engh & Huber (2001)  
Ideal geometry (DNA, RNA) : Parkinson et al. (1996)  
Validation Pipeline (wwPDB-VP) : trunk31020

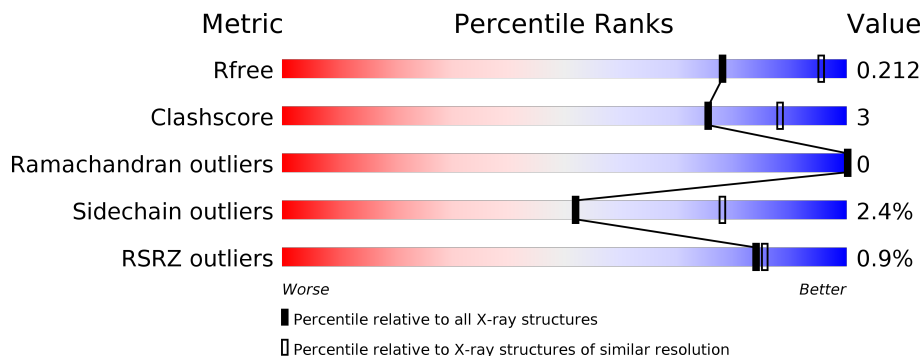
# 1 Overall quality at a glance

The following experimental techniques were used to determine the structure:

*X-RAY DIFFRACTION*

The reported resolution of this entry is 2.50 Å.

Percentile scores (ranging between 0-100) for global validation metrics of the entry are shown in the following graphic. The table shows the number of entries on which the scores are based.



Metric	Whole archive (#Entries)	Similar resolution (#Entries, resolution range(Å))
$R_{free}$	111664	4155 (2.50-2.50)
Clashscore	122126	4827 (2.50-2.50)
Ramachandran outliers	120053	4735 (2.50-2.50)
Sidechain outliers	120020	4737 (2.50-2.50)
RSRZ outliers	108989	4058 (2.50-2.50)

The table below summarises the geometric issues observed across the polymeric chains and their fit to the electron density. The red, orange, yellow and green segments on the lower bar indicate the fraction of residues that contain outliers for  $\geq 3$ , 2, 1 and 0 types of geometric quality criteria. A grey segment represents the fraction of residues that are not modelled. The numeric value for each fraction is indicated below the corresponding segment, with a dot representing fractions  $\leq 5\%$ . The upper red bar (where present) indicates the fraction of residues that have poor fit to the electron density. The numeric value is given above the bar.

Mol	Chain	Length	Quality of chain
1	A	316	
1	B	316	
1	C	316	
1	D	316	

## 2 Entry composition [i](#)

There are 4 unique types of molecules in this entry. The entry contains 9183 atoms, of which 0 are hydrogens and 0 are deuteriums.

In the tables below, the ZeroOcc column contains the number of atoms modelled with zero occupancy, the AltConf column contains the number of residues with at least one atom in alternate conformation and the Trace column contains the number of residues modelled with at most 2 atoms.

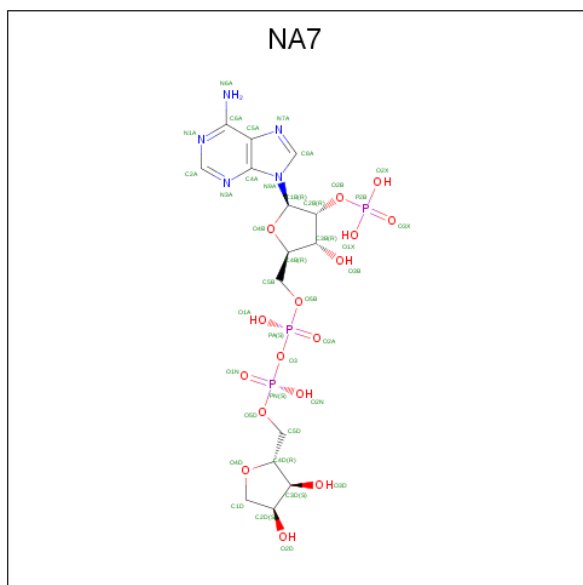
- Molecule 1 is a protein called N-PAC PROTEIN.

Mol	Chain	Residues	Atoms					ZeroOcc	AltConf	Trace
			Total	C	N	O	S			
1	A	292	2185	1374	374	419	18	0	1	0
1	B	292	2185	1376	374	417	18	0	1	0
1	C	292	2189	1377	375	419	18	0	1	0
1	D	291	2171	1368	367	418	18	0	0	0

- Molecule 2 is POTASSIUM ION (three-letter code: K) (formula: K).

Mol	Chain	Residues	Atoms	ZeroOcc	AltConf
2	B	1	Total 1 K 1	0	0
2	A	1	Total 1 K 1	0	0
2	D	1	Total 1 K 1	0	0
2	C	1	Total 1 K 1	0	0

- Molecule 3 is [(2R,3R,4R,5R)-5-(6-AMINO-9H-PURIN-9-YL)-3-HYDROXY-4-(PHOSPHONOXY)TETRAHYDROFURAN-2-YL]METHYL [(2R,3S,4S)-3,4-DIHYDROXYTETRAHYDROFURAN-2-YL]METHYL DIHYDROGEN DIPHOSPHATE (three-letter code: NA7) (formula: C<sub>15</sub>H<sub>24</sub>N<sub>5</sub>O<sub>16</sub>P<sub>3</sub>).



Mol	Chain	Residues	Atoms					ZeroOcc	AltConf
			Total	C	N	O	P		
3	A	1	39	15	5	16	3	0	0
3	D	1	39	15	5	16	3	0	0


- Molecule 4 is water.

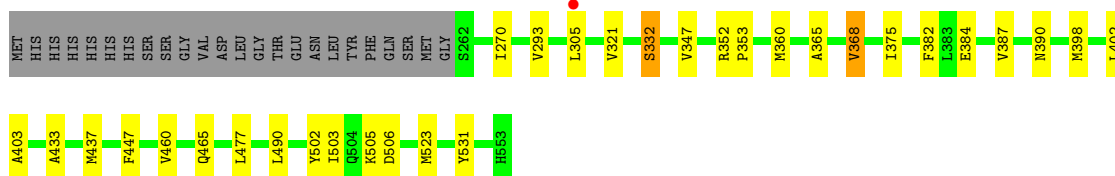
Mol	Chain	Residues	Atoms		ZeroOcc	AltConf
4	A	91	Total	O	0	0
			91	91		
4	B	94	Total	O	0	0
			94	94		
4	C	84	Total	O	0	0
			84	84		
4	D	102	Total	O	0	0
			102	102		

### 3 Residue-property plots [i](#)


These plots are drawn for all protein, RNA and DNA chains in the entry. The first graphic for a chain summarises the proportions of the various outlier classes displayed in the second graphic. The second graphic shows the sequence view annotated by issues in geometry and electron density. Residues are color-coded according to the number of geometric quality criteria for which they contain at least one outlier: green = 0, yellow = 1, orange = 2 and red = 3 or more. A red dot above a residue indicates a poor fit to the electron density ( $RSRZ > 2$ ). Stretches of 2 or more consecutive residues without any outlier are shown as a green connector. Residues present in the sample, but not in the model, are shown in grey.

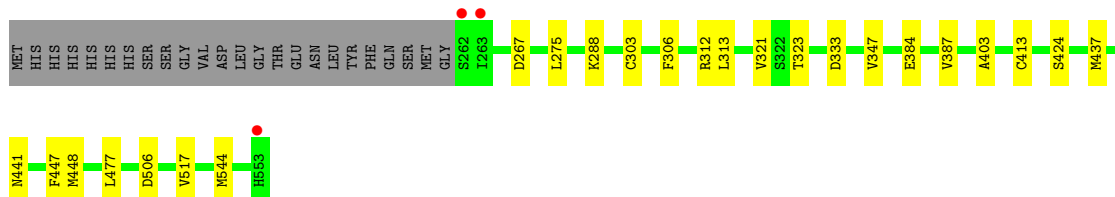
- Molecule 1: N-PAC PROTEIN

Chain A: 




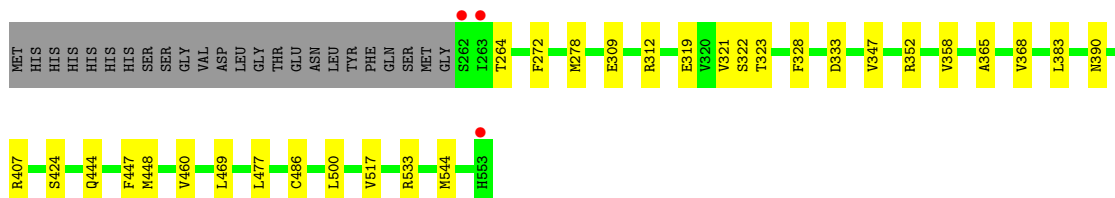
- Molecule 1: N-PAC PROTEIN

Chain B: 




- Molecule 1: N-PAC PROTEIN

Chain C: 



- Molecule 1: N-PAC PROTEIN

Chain D: 





## 4 Data and refinement statistics i

Property	Value	Source
Space group	H 3	Depositor
Cell constants a, b, c, $\alpha$ , $\beta$ , $\gamma$	134.18Å 134.18Å 261.46Å 90.00° 90.00° 120.00°	Depositor
Resolution (Å)	50.00 – 2.50 47.69 – 2.50	Depositor EDS
% Data completeness (in resolution range)	100.0 (50.00-2.50) 100.0 (47.69-2.50)	Depositor EDS
$R_{merge}$	0.15	Depositor
$R_{sym}$	(Not available)	Depositor
$\langle I/\sigma(I) \rangle$ <sup>1</sup>	2.13 (at 2.51Å)	Xtrriage
Refinement program	REFMAC 5.2.0019	Depositor
R, $R_{free}$	0.170 , 0.211 0.174 , 0.212	Depositor DCC
$R_{free}$ test set	3072 reflections (5.06%)	wwPDB-VP
Wilson B-factor (Å <sup>2</sup> )	36.6	Xtrriage
Anisotropy	0.045	Xtrriage
Bulk solvent $k_{sol}$ (e/Å <sup>3</sup> ), $B_{sol}$ (Å <sup>2</sup> )	0.34 , 47.6	EDS
L-test for twinning <sup>2</sup>	$\langle  L  \rangle = 0.47$ , $\langle L^2 \rangle = 0.30$	Xtrriage
Estimated twinning fraction	0.039 for h,-h-k,-l	Xtrriage
$F_o, F_c$ correlation	0.95	EDS
Total number of atoms	9183	wwPDB-VP
Average B, all atoms (Å <sup>2</sup> )	37.0	wwPDB-VP

Xtrriage's analysis on translational NCS is as follows: *The largest off-origin peak in the Patterson function is 3.78% of the height of the origin peak. No significant pseudotranslation is detected.*

<sup>1</sup>Intensities estimated from amplitudes.

<sup>2</sup>Theoretical values of  $\langle |L| \rangle$ ,  $\langle L^2 \rangle$  for acentric reflections are 0.5, 0.333 respectively for untwinned datasets, and 0.375, 0.2 for perfectly twinned datasets.

## 5 Model quality [i](#)

### 5.1 Standard geometry [i](#)

Bond lengths and bond angles in the following residue types are not validated in this section: K, NA7

The Z score for a bond length (or angle) is the number of standard deviations the observed value is removed from the expected value. A bond length (or angle) with  $|Z| > 5$  is considered an outlier worth inspection. RMSZ is the root-mean-square of all Z scores of the bond lengths (or angles).

Mol	Chain	Bond lengths		Bond angles	
		RMSZ	# Z  >5	RMSZ	# Z  >5
1	A	0.59	0/2220	0.64	0/3002
1	B	0.60	1/2220 (0.0%)	0.65	0/3001
1	C	0.60	1/2224 (0.0%)	0.66	1/3006 (0.0%)
1	D	0.58	0/2202	0.64	0/2978
All	All	0.59	2/8866 (0.0%)	0.65	1/11987 (0.0%)

All (2) bond length outliers are listed below:

Mol	Chain	Res	Type	Atoms	Z	Observed(Å)	Ideal(Å)
1	B	413	CYS	CB-SG	-5.33	1.73	1.81
1	C	309	GLU	CG-CD	5.07	1.59	1.51

All (1) bond angle outliers are listed below:

Mol	Chain	Res	Type	Atoms	Z	Observed(°)	Ideal(°)
1	C	333	ASP	CB-CA-C	-5.01	100.38	110.40

There are no chirality outliers.

There are no planarity outliers.

### 5.2 Too-close contacts [i](#)

In the following table, the Non-H and H(model) columns list the number of non-hydrogen atoms and hydrogen atoms in the chain respectively. The H(added) column lists the number of hydrogen atoms added and optimized by MolProbity. The Clashes column lists the number of clashes within the asymmetric unit, whereas Symm-Clashes lists symmetry related clashes.

Mol	Chain	Non-H	H(model)	H(added)	Clashes	Symm-Clashes
1	A	2185	0	2192	18	0

*Continued on next page...*



Continued from previous page...

Mol	Chain	Non-H	H(model)	H(added)	Clashes	Symm-Clashes
1	B	2185	0	2196	12	0
1	C	2189	0	2203	17	0
1	D	2171	0	2178	17	0
2	A	1	0	0	0	0
2	B	1	0	0	0	0
2	C	1	0	0	0	0
2	D	1	0	0	0	0
3	A	39	0	20	1	0
3	D	39	0	20	7	0
4	A	91	0	0	2	0
4	B	94	0	0	2	0
4	C	84	0	0	1	0
4	D	102	0	0	3	0
All	All	9183	0	8809	59	0

The all-atom clashscore is defined as the number of clashes found per 1000 atoms (including hydrogen atoms). The all-atom clashscore for this structure is 3.

All (59) close contacts within the same asymmetric unit are listed below, sorted by their clash magnitude.

Atom-1	Atom-2	Interatomic distance (Å)	Clash overlap (Å)
3:D:1555:NA7:N6A	4:D:2102:HOH:O	2.11	0.81
1:B:441:ASN:ND2	1:B:506:ASP:OD2	2.24	0.69
1:B:312:ARG:HH12	1:B:323:THR:HG21	1.61	0.65
4:B:2084:HOH:O	1:C:533:ARG:HD3	1.97	0.63
1:C:321:VAL:HG21	1:C:347:VAL:HG13	1.81	0.62
1:C:460:VAL:HG12	1:D:517:VAL:HG21	1.82	0.60
1:C:278:MET:HE1	1:C:390:ASN:HA	1.84	0.58
1:C:477:LEU:HD21	1:D:447:PHE:CD2	2.38	0.57
1:D:502:TYR:HE2	3:D:1555:NA7:O3	1.86	0.57
1:D:401:ILE:HD13	1:D:417:PHE:CD1	2.40	0.57
1:D:530:VAL:HG12	1:D:547:VAL:CG2	2.35	0.57
1:A:460:VAL:HG12	1:B:517:VAL:HG21	1.88	0.55
1:C:407:ARG:HD3	4:C:2039:HOH:O	2.06	0.55
1:D:321:VAL:HG21	1:D:347:VAL:HG13	1.89	0.54
1:B:275:LEU:HD13	1:B:306:PHE:CE1	2.43	0.53
1:C:365:ALA:O	1:C:368:VAL:HG12	2.09	0.53
1:A:477:LEU:HD21	1:B:447:PHE:CD2	2.45	0.52
1:D:502:TYR:CE2	3:D:1555:NA7:O3	2.63	0.51
1:C:312:ARG:HH12	1:C:323:THR:HG21	1.75	0.51
1:B:448:MET:HB2	1:B:544:MET:HE2	1.93	0.50

Continued on next page...

*Continued from previous page...*

Atom-1	Atom-2	Interatomic distance (Å)	Clash overlap (Å)
3:A:1555:NA7:HC1'	4:A:2091:HOH:O	2.11	0.50
1:C:312:ARG:NH1	1:C:323:THR:HG21	2.27	0.50
1:A:321:VAL:HG21	1:A:347:VAL:HG13	1.93	0.49
1:B:288:LYS:NZ	4:B:2004:HOH:O	2.45	0.49
1:D:502:TYR:OH	3:D:1555:NA7:O2A	2.30	0.48
1:D:267:ASP:OD1	1:D:267:ASP:N	2.45	0.48
1:C:272:PHE:CD2	1:C:328:PHE:HB2	2.49	0.48
1:C:477:LEU:HD21	1:D:447:PHE:HD2	1.79	0.48
1:D:277:LEU:HB3	3:D:1555:NA7:O2N	2.13	0.47
1:D:292:THR:HG22	4:D:2005:HOH:O	2.14	0.47
1:C:448:MET:HB2	1:C:544:MET:HE2	1.96	0.47
1:A:447:PHE:CD2	1:B:477:LEU:HD21	2.50	0.47
1:A:270:ILE:O	1:A:293:VAL:HA	2.15	0.46
1:A:352:ARG:HB2	1:A:353:PRO:HD2	1.98	0.46
1:C:500:LEU:HD23	1:C:500:LEU:C	2.37	0.45
1:B:303:CYS:HB3	1:B:313:LEU:HD22	1.98	0.45
1:A:398:MET:HE2	4:A:2039:HOH:O	2.16	0.44
1:D:502:TYR:CD2	3:D:1555:NA7:HN6'	2.52	0.44
1:C:358:VAL:HA	1:C:383:LEU:O	2.18	0.44
3:D:1555:NA7:HC1'	4:D:2100:HOH:O	2.18	0.43
1:A:465:GLN:HB3	1:A:490:LEU:HD21	2.00	0.43
1:A:505:LYS:HE2	1:A:506:ASP:OD1	2.19	0.43
1:B:387:VAL:N	1:B:437:MET:HE3	2.34	0.43
1:C:447:PHE:CD2	1:D:477:LEU:HD21	2.54	0.42
1:A:384:GLU:CD	1:A:433:ALA:HB3	2.40	0.42
1:A:332:SER:HB3	1:A:502:TYR:OH	2.20	0.42
1:A:360:MET:HE2	1:A:387:VAL:HG13	2.01	0.41
1:C:517:VAL:HG21	1:D:460:VAL:CG1	2.49	0.41
1:C:469:LEU:HD13	1:C:486:CYS:CB	2.50	0.41
1:A:503:ILE:HG21	1:A:531:TYR:CE1	2.56	0.41
1:A:365:ALA:O	1:A:368:VAL:HG12	2.20	0.41
1:D:275:LEU:HD11	1:D:295:VAL:HB	2.02	0.41
1:A:402:LEU:HD12	1:A:437:MET:HE2	2.03	0.41
1:A:384:GLU:O	1:A:403:ALA:HA	2.21	0.41
1:B:321:VAL:HG21	1:B:347:VAL:HG13	2.01	0.41
1:D:358:VAL:HA	1:D:383:LEU:O	2.20	0.40
1:A:390:ASN:OD1	1:A:390:ASN:C	2.59	0.40
1:B:384:GLU:O	1:B:403:ALA:HA	2.22	0.40
1:A:375:ILE:HD12	1:A:382:PHE:HD1	1.86	0.40

There are no symmetry-related clashes.

## 5.3 Torsion angles [i](#)

### 5.3.1 Protein backbone [i](#)

In the following table, the Percentiles column shows the percent Ramachandran outliers of the chain as a percentile score with respect to all X-ray entries followed by that with respect to entries of similar resolution.

The Analysed column shows the number of residues for which the backbone conformation was analysed, and the total number of residues.

Mol	Chain	Analysed	Favoured	Allowed	Outliers	Percentiles	
1	A	291/316 (92%)	290 (100%)	1 (0%)	0	100	100
1	B	291/316 (92%)	288 (99%)	3 (1%)	0	100	100
1	C	291/316 (92%)	287 (99%)	4 (1%)	0	100	100
1	D	289/316 (92%)	287 (99%)	2 (1%)	0	100	100
All	All	1162/1264 (92%)	1152 (99%)	10 (1%)	0	100	100

There are no Ramachandran outliers to report.

### 5.3.2 Protein sidechains [i](#)

In the following table, the Percentiles column shows the percent sidechain outliers of the chain as a percentile score with respect to all X-ray entries followed by that with respect to entries of similar resolution.

The Analysed column shows the number of residues for which the sidechain conformation was analysed, and the total number of residues.

Mol	Chain	Analysed	Rotameric	Outliers	Percentiles	
1	A	233/257 (91%)	229 (98%)	4 (2%)	63	85
1	B	232/257 (90%)	229 (99%)	3 (1%)	71	89
1	C	234/257 (91%)	228 (97%)	6 (3%)	49	76
1	D	231/257 (90%)	222 (96%)	9 (4%)	35	61
All	All	930/1028 (90%)	908 (98%)	22 (2%)	52	78

All (22) residues with a non-rotameric sidechain are listed below:

Mol	Chain	Res	Type
1	A	305	LEU
1	A	332	SER

*Continued on next page...*

*Continued from previous page...*

Mol	Chain	Res	Type
1	A	368	VAL
1	A	523	MET
1	B	267	ASP
1	B	333	ASP
1	B	424	SER
1	C	264	THR
1	C	319	GLU
1	C	322	SER
1	C	352	ARG
1	C	424	SER
1	C	444	GLN
1	D	264	THR
1	D	267	ASP
1	D	332	SER
1	D	335	LYS
1	D	407	ARG
1	D	424	SER
1	D	444	GLN
1	D	477	LEU
1	D	540	SER

Some sidechains can be flipped to improve hydrogen bonding and reduce clashes. All (2) such sidechains are listed below:

Mol	Chain	Res	Type
1	B	491	GLN
1	C	491	GLN

### 5.3.3 RNA [i](#)

There are no RNA molecules in this entry.

### 5.4 Non-standard residues in protein, DNA, RNA chains [i](#)

There are no non-standard protein/DNA/RNA residues in this entry.

### 5.5 Carbohydrates [i](#)

There are no carbohydrates in this entry.

## 5.6 Ligand geometry

Of 6 ligands modelled in this entry, 4 are monoatomic - leaving 2 for Mogul analysis.

In the following table, the Counts columns list the number of bonds (or angles) for which Mogul statistics could be retrieved, the number of bonds (or angles) that are observed in the model and the number of bonds (or angles) that are defined in the Chemical Component Dictionary. The Link column lists molecule types, if any, to which the group is linked. The Z score for a bond length (or angle) is the number of standard deviations the observed value is removed from the expected value. A bond length (or angle) with  $|Z| > 2$  is considered an outlier worth inspection. RMSZ is the root-mean-square of all Z scores of the bond lengths (or angles).

Mol	Type	Chain	Res	Link	Bond lengths			Bond angles		
					Counts	RMSZ	# Z  > 2	Counts	RMSZ	# Z  > 2
3	NA7	A	1555	-	37,42,42	1.07	2 (5%)	43,65,65	1.87	4 (9%)
3	NA7	D	1555	-	37,42,42	1.12	2 (5%)	43,65,65	1.92	2 (4%)

In the following table, the Chirals column lists the number of chiral outliers, the number of chiral centers analysed, the number of these observed in the model and the number defined in the Chemical Component Dictionary. Similar counts are reported in the Torsion and Rings columns. '-' means no outliers of that kind were identified.

Mol	Type	Chain	Res	Link	Chirals	Torsions	Rings
3	NA7	A	1555	-	-	0/23/56/56	0/4/4/4
3	NA7	D	1555	-	-	0/23/56/56	0/4/4/4

All (4) bond length outliers are listed below:

Mol	Chain	Res	Type	Atoms	Z	Observed(Å)	Ideal(Å)
3	D	1555	NA7	C2A-N1A	2.36	1.38	1.33
3	A	1555	NA7	C2A-N1A	2.77	1.39	1.33
3	A	1555	NA7	C2A-N3A	3.42	1.37	1.32
3	D	1555	NA7	C2A-N3A	3.59	1.38	1.32

All (6) bond angle outliers are listed below:

Mol	Chain	Res	Type	Atoms	Z	Observed(°)	Ideal(°)
3	D	1555	NA7	N3A-C2A-N1A	-10.94	119.50	128.86
3	A	1555	NA7	N3A-C2A-N1A	-10.02	120.28	128.86
3	A	1555	NA7	C1B-N9A-C4A	-3.19	121.13	126.64
3	A	1555	NA7	C4A-C5A-N7A	-2.81	106.69	109.41
3	D	1555	NA7	C4A-C5A-N7A	-2.60	106.89	109.41
3	A	1555	NA7	PN-O3-PA	-2.02	125.85	132.63

There are no chirality outliers.

There are no torsion outliers.

There are no ring outliers.

2 monomers are involved in 8 short contacts:

Mol	Chain	Res	Type	Clashes	Symm-Clashes
3	A	1555	NA7	1	0
3	D	1555	NA7	7	0

## 5.7 Other polymers [i](#)

There are no such residues in this entry.

## 5.8 Polymer linkage issues [i](#)

There are no chain breaks in this entry.

## 6 Fit of model and data [i](#)

### 6.1 Protein, DNA and RNA chains [i](#)

In the following table, the column labelled ‘#RSRZ > 2’ contains the number (and percentage) of RSRZ outliers, followed by percent RSRZ outliers for the chain as percentile scores relative to all X-ray entries and entries of similar resolution. The OWAB column contains the minimum, median, 95<sup>th</sup> percentile and maximum values of the occupancy-weighted average B-factor per residue. The column labelled ‘Q < 0.9’ lists the number of (and percentage) of residues with an average occupancy less than 0.9.

Mol	Chain	Analysed	<RSRZ>	#RSRZ>2	OWAB(Å <sup>2</sup> )	Q<0.9
1	A	292/316 (92%)	-0.30	1 (0%) 93 94	23, 35, 53, 71	0
1	B	292/316 (92%)	-0.36	3 (1%) 82 84	22, 35, 53, 71	0
1	C	292/316 (92%)	-0.30	3 (1%) 82 84	23, 35, 54, 71	0
1	D	291/316 (92%)	-0.25	3 (1%) 82 84	23, 35, 53, 71	0
All	All	1167/1264 (92%)	-0.30	10 (0%) 84 85	22, 35, 53, 71	0

All (10) RSRZ outliers are listed below:

Mol	Chain	Res	Type	RSRZ
1	C	262	SER	6.2
1	B	262	SER	5.7
1	C	263	ILE	4.3
1	B	263	ILE	4.0
1	D	305	LEU	3.4
1	A	305	LEU	2.8
1	D	263	ILE	2.7
1	B	553	HIS	2.0
1	C	553	HIS	2.0
1	D	303	CYS	2.0

### 6.2 Non-standard residues in protein, DNA, RNA chains [i](#)

There are no non-standard protein/DNA/RNA residues in this entry.

### 6.3 Carbohydrates [i](#)

There are no carbohydrates in this entry.

## 6.4 Ligands [i](#)

In the following table, the Atoms column lists the number of modelled atoms in the group and the number defined in the chemical component dictionary. The B-factors column lists the minimum, median, 95<sup>th</sup> percentile and maximum values of B factors of atoms in the group. The column labelled 'Q< 0.9' lists the number of atoms with occupancy less than 0.9.

Mol	Type	Chain	Res	Atoms	RSCC	RSR	B-factors( $\text{\AA}^2$ )	Q<0.9
3	NA7	D	1555	39/39	0.90	0.22	9,40,50,52	39
3	NA7	A	1555	39/39	0.91	0.20	15,35,49,57	39
2	K	D	1554	1/1	0.99	0.10	49,49,49,49	0
2	K	C	1554	1/1	0.99	0.12	37,37,37,37	0
2	K	B	1554	1/1	0.99	0.07	37,37,37,37	0
2	K	A	1554	1/1	0.99	0.05	46,46,46,46	0

## 6.5 Other polymers [i](#)

There are no such residues in this entry.