



# Full wwPDB X-ray Structure Validation Report ⓘ

Sep 15, 2024 – 06:05 PM EDT

PDB ID : 8V0B  
Title : Structure of TDP1 catalytic domain complexed with compound IB05  
Authors : Lountos, G.T.; Zhao, X.Z.; Barakat, I.; Wang, W.; Agama, K.; Al Mahmud, M.R.; Pommier, Y.; Burke Jr., T.R.  
Deposited on : 2023-11-17  
Resolution : 1.65 Å (reported)

This is a Full wwPDB X-ray Structure Validation Report for a publicly released PDB entry.

We welcome your comments at [validation@mail.wwpdb.org](mailto:validation@mail.wwpdb.org)

A user guide is available at

<https://www.wwpdb.org/validation/2017/XrayValidationReportHelp>

with specific help available everywhere you see the ⓘ symbol.

The types of validation reports are described at

<http://www.wwpdb.org/validation/2017/FAQs#types>.

---

The following versions of software and data (see [references ⓘ](#)) were used in the production of this report:

MolProbity : 4.02b-467  
Mogul : 2022.3.0, CSD as543be (2022)  
Xtriage (Phenix) : 1.20.1  
EDS : 3.0  
buster-report : 1.1.7 (2018)  
Percentile statistics : 20231227.v01 (using entries in the PDB archive December 27th 2023)  
CCP4 : 9.0.002 (Gargrove)  
Density-Fitness : 1.0.11  
Ideal geometry (proteins) : Engh & Huber (2001)  
Ideal geometry (DNA, RNA) : Parkinson et al. (1996)  
Validation Pipeline (wwPDB-VP) : 2.38.3

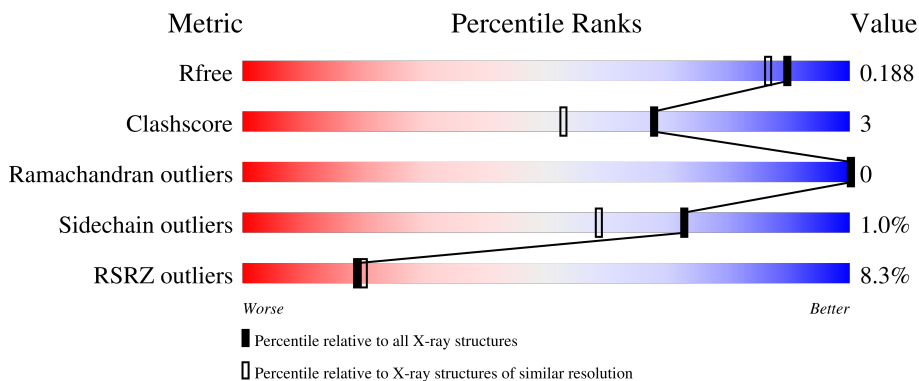
# 1 Overall quality at a glance

The following experimental techniques were used to determine the structure:

*X-RAY DIFFRACTION*

The reported resolution of this entry is 1.65 Å.

Percentile scores (ranging between 0-100) for global validation metrics of the entry are shown in the following graphic. The table shows the number of entries on which the scores are based.



Metric	Whole archive (#Entries)	Similar resolution (#Entries, resolution range(Å))
$R_{free}$	164625	2328 (1.66-1.66)
Clashscore	180529	2515 (1.66-1.66)
Ramachandran outliers	177936	2475 (1.66-1.66)
Sidechain outliers	177891	2475 (1.66-1.66)
RSRZ outliers	164620	2328 (1.66-1.66)

The table below summarises the geometric issues observed across the polymeric chains and their fit to the electron density. The red, orange, yellow and green segments of the lower bar indicate the fraction of residues that contain outliers for  $\geq 3$ , 2, 1 and 0 types of geometric quality criteria respectively. A grey segment represents the fraction of residues that are not modelled. The numeric value for each fraction is indicated below the corresponding segment, with a dot representing fractions  $\leq 5\%$ . The upper red bar (where present) indicates the fraction of residues that have poor fit to the electron density. The numeric value is given above the bar.

Mol	Chain	Length	Quality of chain
1	A	461	 6% 87% 8%
1	B	461	 10% 89% 7%

The following table lists non-polymeric compounds, carbohydrate monomers and non-standard residues in protein, DNA, RNA chains that are outliers for geometric or electron-density-fit criteria:

Mol	Type	Chain	Res	Chirality	Geometry	Clashes	Electron density
5	PEG	A	709	-	-	X	-
5	PEG	B	705	-	-	X	-

## 2 Entry composition i

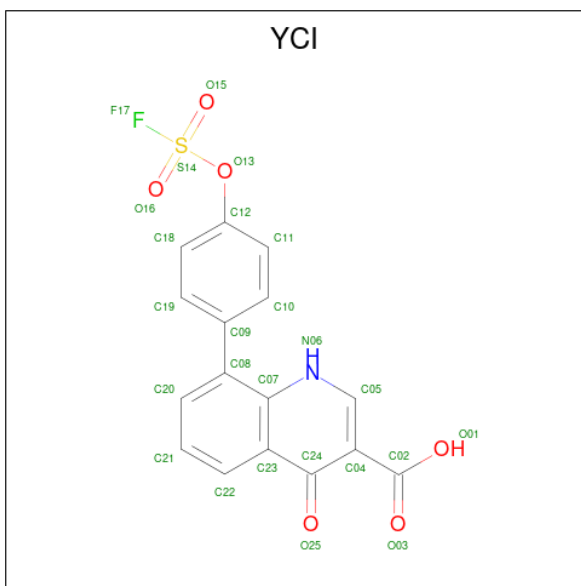
There are 6 unique types of molecules in this entry. The entry contains 8107 atoms, of which 0 are hydrogens and 0 are deuteriums.

In the tables below, the ZeroOcc column contains the number of atoms modelled with zero occupancy, the AltConf column contains the number of residues with at least one atom in alternate conformation and the Trace column contains the number of residues modelled with at most 2 atoms.

- Molecule 1 is a protein called Tyrosyl-DNA phosphodiesterase 1.

Mol	Chain	Residues	Atoms					ZeroOcc	AltConf	Trace
			Total	C	N	O	S			
1	A	441	Total 3643	C 2358	N 614	O 656	S 15	0	16	0
1	B	442	Total 3684	C 2379	N 623	O 665	S 17	0	20	0

- Molecule 2 is 8-{4-[(fluorosulfonyl)oxy]phenyl}-4-oxo-1,4-dihydroquinoline-3-carboxylic acid (three-letter code: YCI) (formula: C<sub>16</sub>H<sub>10</sub>FNO<sub>6</sub>S) (labeled as "Ligand of Interest" by depositor).



Mol	Chain	Residues	Atoms					ZeroOcc	AltConf	
			Total	C	F	N	O			S
2	A	1	Total 25	C 16	F 1	N 1	O 6	S 1	0	0
2	B	1	Total 25	C 16	F 1	N 1	O 6	S 1	0	0

- Molecule 3 is 1,2-ETHANEDIOL (three-letter code: EDO) (formula: C<sub>2</sub>H<sub>6</sub>O<sub>2</sub>).



Mol	Chain	Residues	Atoms	ZeroOcc	AltConf
3	A	1	Total C O 4 2 2	0	0
3	A	1	Total C O 4 2 2	0	0
3	A	1	Total C O 4 2 2	0	0
3	A	1	Total C O 4 2 2	0	0
3	A	1	Total C O 4 2 2	0	0
3	A	1	Total C O 4 2 2	0	0
3	B	1	Total C O 4 2 2	0	0
3	B	1	Total C O 4 2 2	0	0

- Molecule 4 is DIMETHYL SULFOXIDE (three-letter code: DMS) (formula: C<sub>2</sub>H<sub>6</sub>OS).



Mol	Chain	Residues	Atoms			ZeroOcc	AltConf	
4	A	1	Total	C	O	S	0	0
			4	2	1	1		
4	B	1	Total	C	O	S	0	0
			4	2	1	1		

- Molecule 5 is DI(HYDROXYETHYL)ETHER (three-letter code: PEG) (formula:  $C_4H_{10}O_3$ ).



Mol	Chain	Residues	Atoms			ZeroOcc	AltConf
5	A	1	Total	C	O	0	0
			7	4	3		
5	B	1	Total	C	O	0	0
			7	4	3		

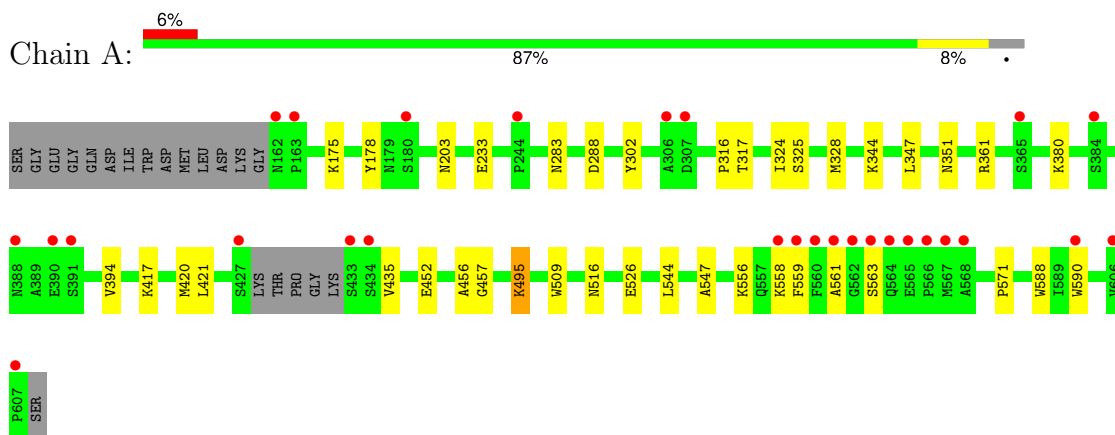
- Molecule 6 is water.

Mol	Chain	Residues	Atoms		ZeroOcc	AltConf
6	A	386	Total 386	O 386	0	0
6	B	290	Total 290	O 290	0	0

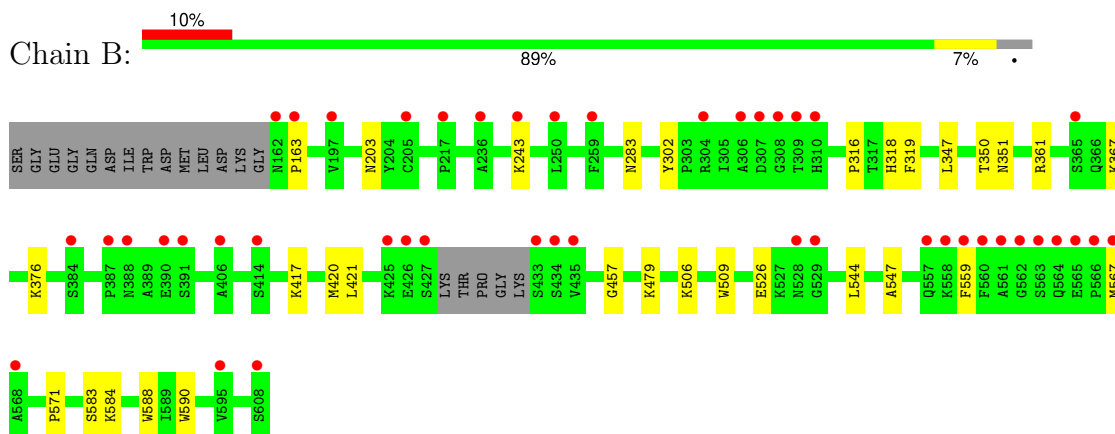
### 3 Residue-property plots [i](#)

These plots are drawn for all protein, RNA, DNA and oligosaccharide chains in the entry. The first graphic for a chain summarises the proportions of the various outlier classes displayed in the second graphic. The second graphic shows the sequence view annotated by issues in geometry and electron density. Residues are color-coded according to the number of geometric quality criteria for which they contain at least one outlier: green = 0, yellow = 1, orange = 2 and red = 3 or more. A red dot above a residue indicates a poor fit to the electron density ( $RSRZ > 2$ ). Stretches of 2 or more consecutive residues without any outlier are shown as a green connector. Residues present in the sample, but not in the model, are shown in grey.

- Molecule 1: Tyrosyl-DNA phosphodiesterase 1



- Molecule 1: Tyrosyl-DNA phosphodiesterase 1





## 4 Data and refinement statistics

Property	Value	Source
Space group	P 21 21 21	Depositor
Cell constants a, b, c, $\alpha$ , $\beta$ , $\gamma$	49.94Å 104.53Å 192.84Å 90.00° 90.00° 90.00°	Depositor
Resolution (Å)	40.55 – 1.65 40.55 – 1.65	Depositor EDS
% Data completeness (in resolution range)	99.6 (40.55-1.65) 95.6 (40.55-1.65)	Depositor EDS
$R_{merge}$	(Not available)	Depositor
$R_{sym}$	0.08	Depositor
$\langle I/\sigma(I) \rangle$ <sup>1</sup>	2.05 (at 1.65Å)	Xtrriage
Refinement program	PHENIX 1.16_3549	Depositor
R, $R_{free}$	0.164 , 0.188 0.165 , 0.188	Depositor DCC
$R_{free}$ test set	119431 reflections (1.64%)	wwPDB-VP
Wilson B-factor (Å <sup>2</sup> )	16.2	Xtrriage
Anisotropy	0.760	Xtrriage
Bulk solvent $k_{sol}$ (e/Å <sup>3</sup> ), $B_{sol}$ (Å <sup>2</sup> )	0.37 , 46.5	EDS
L-test for twinning <sup>2</sup>	$\langle  L  \rangle = 0.48$ , $\langle L^2 \rangle = 0.31$	Xtrriage
Estimated twinning fraction	No twinning to report.	Xtrriage
$F_o, F_c$ correlation	0.96	EDS
Total number of atoms	8107	wwPDB-VP
Average B, all atoms (Å <sup>2</sup> )	27.0	wwPDB-VP

Xtrriage's analysis on translational NCS is as follows: *The largest off-origin peak in the Patterson function is 4.25% of the height of the origin peak. No significant pseudotranslation is detected.*

<sup>1</sup>Intensities estimated from amplitudes.

<sup>2</sup>Theoretical values of  $\langle |L| \rangle$ ,  $\langle L^2 \rangle$  for acentric reflections are 0.5, 0.333 respectively for untwinned datasets, and 0.375, 0.2 for perfectly twinned datasets.

## 5 Model quality [i](#)

### 5.1 Standard geometry [i](#)

Bond lengths and bond angles in the following residue types are not validated in this section: PEG, YCI, DMS, EDO

The Z score for a bond length (or angle) is the number of standard deviations the observed value is removed from the expected value. A bond length (or angle) with  $|Z| > 5$  is considered an outlier worth inspection. RMSZ is the root-mean-square of all Z scores of the bond lengths (or angles).

Mol	Chain	Bond lengths		Bond angles	
		RMSZ	# Z  >5	RMSZ	# Z  >5
1	A	0.35	0/3761	0.55	0/5108
1	B	0.32	0/3803	0.53	0/5164
All	All	0.33	0/7564	0.54	0/10272

There are no bond length outliers.

There are no bond angle outliers.

There are no chirality outliers.

There are no planarity outliers.

### 5.2 Too-close contacts [i](#)

In the following table, the Non-H and H(model) columns list the number of non-hydrogen atoms and hydrogen atoms in the chain respectively. The H(added) column lists the number of hydrogen atoms added and optimized by MolProbity. The Clashes column lists the number of clashes within the asymmetric unit, whereas Symm-Clashes lists symmetry-related clashes.

Mol	Chain	Non-H	H(model)	H(added)	Clashes	Symm-Clashes
1	A	3643	0	3565	30	0
1	B	3684	0	3587	21	0
2	A	25	0	0	0	0
2	B	25	0	0	0	0
3	A	24	0	36	0	0
3	B	8	0	12	0	0
4	A	4	0	6	0	0
4	B	4	0	6	0	0
5	A	7	0	10	7	0
5	B	7	0	10	5	0
6	A	386	0	0	4	0

*Continued on next page...*

*Continued from previous page...*

Mol	Chain	Non-H	H(model)	H(added)	Clashes	Symm-Clashes
6	B	290	0	0	4	0
All	All	8107	0	7232	51	0

The all-atom clashscore is defined as the number of clashes found per 1000 atoms (including hydrogen atoms). The all-atom clashscore for this structure is 3.

All (51) close contacts within the same asymmetric unit are listed below, sorted by their clash magnitude.

Atom-1	Atom-2	Interatomic distance (Å)	Clash overlap (Å)
1:A:547:ALA:HA	5:A:709:PEG:H31	1.51	0.92
1:A:324:ILE:O	1:A:328[B]:MET:HG3	1.91	0.70
1:B:506:LYS:NZ	6:B:801:HOH:O	2.27	0.66
1:A:547:ALA:O	5:A:709:PEG:H21	1.96	0.66
1:B:367:LYS:NZ	6:B:804:HOH:O	2.33	0.62
1:A:361[B]:ARG:NH2	6:A:805:HOH:O	2.32	0.59
1:A:417:LYS:O	1:A:421[A]:LEU:HG	2.04	0.57
1:A:421[A]:LEU:HD22	1:A:435:VAL:HG11	1.87	0.57
1:A:558:LYS:HB2	1:A:561:ALA:HB2	1.88	0.56
1:B:417:LYS:O	1:B:421[A]:LEU:HG	2.07	0.55
1:A:556[B]:LYS:NZ	6:A:807:HOH:O	2.39	0.54
1:B:163:PRO:HD3	1:B:567:MET:HA	1.90	0.53
1:A:316:PRO:HB2	5:A:709:PEG:H41	1.91	0.52
1:B:479:LYS:NZ	6:B:812:HOH:O	2.45	0.50
1:B:316:PRO:HB2	5:B:705:PEG:H22	1.94	0.48
1:A:417:LYS:HG2	1:A:421[A]:LEU:HD21	1.95	0.48
1:A:495:LYS:HE3	1:A:516:ASN:OD1	2.13	0.47
1:B:302:TYR:CD1	1:B:347:LEU:HA	2.49	0.47
1:A:380:LYS:HE3	1:A:380:LYS:HB2	1.76	0.47
1:B:351[B]:ASN:OD1	5:B:705:PEG:O4	2.19	0.46
1:A:509:TRP:HB3	1:A:544:LEU:HD23	1.97	0.46
1:A:361[B]:ARG:NH1	1:A:526:GLU:OE1	2.49	0.46
1:A:317:THR:HG23	5:A:709:PEG:H11	1.98	0.46
1:B:547:ALA:O	5:B:705:PEG:H42	2.16	0.46
1:B:243:LYS:HA	1:B:243:LYS:HD2	1.68	0.46
1:A:559:PHE:CE1	1:A:571:PRO:HB2	2.52	0.45
1:A:457:GLY:HA3	1:A:588:TRP:CZ2	2.51	0.45
1:B:583:SER:OG	1:B:584:LYS:HE2	2.16	0.45
1:A:344:LYS:NZ	6:A:801:HOH:O	2.22	0.44
1:A:452:GLU:HB2	1:A:456:ALA:HB2	1.99	0.44
1:B:361[B]:ARG:NH1	1:B:526:GLU:OE1	2.50	0.44
1:B:203:ASN:OD1	1:B:283:ASN:HA	2.18	0.44

*Continued on next page...*

Continued from previous page...

Atom-1	Atom-2	Interatomic distance (Å)	Clash overlap (Å)
1:A:233:GLU:H	1:A:233:GLU:CD	2.21	0.43
1:B:509:TRP:HB3	1:B:544:LEU:HD23	2.00	0.43
1:B:457:GLY:HA3	1:B:588:TRP:CZ2	2.53	0.43
1:A:394:VAL:HG21	1:A:421[A]:LEU:HD23	2.01	0.43
1:B:376:LYS:NZ	6:B:818:HOH:O	2.51	0.42
1:A:175:LYS:HE2	1:A:178:TYR:HE2	1.84	0.42
1:B:559:PHE:CE1	1:B:571:PRO:HB2	2.54	0.42
1:B:319:PHE:CG	1:B:350:THR:HG21	2.54	0.42
1:A:302:TYR:CD1	1:A:347:LEU:HA	2.54	0.42
1:B:316:PRO:HG2	5:B:705:PEG:H41	2.01	0.42
1:B:417:LYS:HE2	1:B:421[A]:LEU:HD11	2.01	0.42
1:A:558:LYS:HD3	1:A:558:LYS:HA	1.75	0.42
1:A:316:PRO:HG2	5:A:709:PEG:C1	2.51	0.41
1:A:325[B]:SER:HA	1:A:328[B]:MET:CE	2.51	0.41
1:A:203:ASN:OD1	1:A:283:ASN:HA	2.21	0.41
1:A:361[B]:ARG:NH1	6:A:828:HOH:O	2.54	0.41
1:A:316:PRO:HG2	5:A:709:PEG:H11	2.02	0.40
1:A:351:ASN:HA	5:A:709:PEG:C1	2.51	0.40
1:B:316:PRO:HG2	5:B:705:PEG:C4	2.51	0.40

There are no symmetry-related clashes.

## 5.3 Torsion angles [i](#)

### 5.3.1 Protein backbone [i](#)

In the following table, the Percentiles column shows the percent Ramachandran outliers of the chain as a percentile score with respect to all X-ray entries followed by that with respect to entries of similar resolution.

The Analysed column shows the number of residues for which the backbone conformation was analysed, and the total number of residues.

Mol	Chain	Analysed	Favoured	Allowed	Outliers	Percentiles	
1	A	453/461 (98%)	443 (98%)	10 (2%)	0	100	100
1	B	458/461 (99%)	452 (99%)	6 (1%)	0	100	100
All	All	911/922 (99%)	895 (98%)	16 (2%)	0	100	100

There are no Ramachandran outliers to report.

### 5.3.2 Protein sidechains [i](#)

In the following table, the Percentiles column shows the percent sidechain outliers of the chain as a percentile score with respect to all X-ray entries followed by that with respect to entries of similar resolution.

The Analysed column shows the number of residues for which the sidechain conformation was analysed, and the total number of residues.

Mol	Chain	Analysed	Rotameric	Outliers	Percentiles	
1	A	398/400 (100%)	393 (99%)	5 (1%)	65	47
1	B	402/400 (100%)	397 (99%)	5 (1%)	67	50
All	All	800/800 (100%)	790 (99%)	10 (1%)	73	47

All (10) residues with a non-rotameric sidechain are listed below:

Mol	Chain	Res	Type
1	A	288	ASP
1	A	420	MET
1	A	495	LYS
1	A	563	SER
1	A	590	TRP
1	B	318[A]	HIS
1	B	318[B]	HIS
1	B	420[A]	MET
1	B	420[B]	MET
1	B	590	TRP

Sometimes sidechains can be flipped to improve hydrogen bonding and reduce clashes. There are no such sidechains identified.

### 5.3.3 RNA [i](#)

There are no RNA molecules in this entry.

## 5.4 Non-standard residues in protein, DNA, RNA chains [i](#)

There are no non-standard protein/DNA/RNA residues in this entry.

### 5.5 Carbohydrates [i](#)

There are no oligosaccharides in this entry.

## 5.6 Ligand geometry

14 ligands are modelled in this entry.

In the following table, the Counts columns list the number of bonds (or angles) for which Mogul statistics could be retrieved, the number of bonds (or angles) that are observed in the model and the number of bonds (or angles) that are defined in the Chemical Component Dictionary. The Link column lists molecule types, if any, to which the group is linked. The Z score for a bond length (or angle) is the number of standard deviations the observed value is removed from the expected value. A bond length (or angle) with  $|Z| > 2$  is considered an outlier worth inspection. RMSZ is the root-mean-square of all Z scores of the bond lengths (or angles).

Mol	Type	Chain	Res	Link	Bond lengths			Bond angles		
					Counts	RMSZ	# Z  > 2	Counts	RMSZ	# Z  > 2
3	EDO	A	704	-	3,3,3	0.45	0	2,2,2	0.37	0
3	EDO	B	703	-	3,3,3	0.39	0	2,2,2	0.55	0
3	EDO	A	703	-	3,3,3	0.42	0	2,2,2	0.37	0
3	EDO	A	705	-	3,3,3	0.37	0	2,2,2	0.49	0
3	EDO	A	706	-	3,3,3	0.36	0	2,2,2	0.42	0
4	DMS	B	704	-	3,3,3	0.65	0	3,3,3	0.62	0
5	PEG	B	705	-	6,6,6	0.53	0	5,5,5	1.32	1 (20%)
3	EDO	A	702	-	3,3,3	0.47	0	2,2,2	0.41	0
2	YCI	B	701	-	26,27,27	2.54	7 (26%)	35,40,40	1.57	4 (11%)
2	YCI	A	701	-	26,27,27	2.57	8 (30%)	35,40,40	1.63	5 (14%)
3	EDO	B	702	-	3,3,3	0.43	0	2,2,2	0.44	0
5	PEG	A	709	-	6,6,6	0.46	0	5,5,5	0.81	0
4	DMS	A	708	-	3,3,3	0.69	0	3,3,3	0.64	0
3	EDO	A	707	-	3,3,3	0.45	0	2,2,2	0.32	0

In the following table, the Chirals column lists the number of chiral outliers, the number of chiral centers analysed, the number of these observed in the model and the number defined in the Chemical Component Dictionary. Similar counts are reported in the Torsion and Rings columns. '-' means no outliers of that kind were identified.

Mol	Type	Chain	Res	Link	Chirals	Torsions	Rings
3	EDO	A	704	-	-	0/1/1/1	-
3	EDO	B	703	-	-	0/1/1/1	-
3	EDO	A	703	-	-	0/1/1/1	-
3	EDO	A	705	-	-	0/1/1/1	-
3	EDO	A	706	-	-	1/1/1/1	-
5	PEG	B	705	-	-	1/4/4/4	-
3	EDO	A	702	-	-	0/1/1/1	-
2	YCI	B	701	-	-	8/12/13/13	0/3/3/3
2	YCI	A	701	-	-	6/12/13/13	0/3/3/3

Continued on next page...

Continued from previous page...

Mol	Type	Chain	Res	Link	Chirals	Torsions	Rings
3	EDO	B	702	-	-	0/1/1/1	-
5	PEG	A	709	-	-	3/4/4/4	-
3	EDO	A	707	-	-	0/1/1/1	-

All (15) bond length outliers are listed below:

Mol	Chain	Res	Type	Atoms	Z	Observed(Å)	Ideal(Å)
2	A	701	YCI	O15-S14	6.42	1.51	1.40
2	B	701	YCI	O16-S14	6.40	1.51	1.40
2	A	701	YCI	O16-S14	6.39	1.51	1.40
2	B	701	YCI	O15-S14	6.37	1.51	1.40
2	B	701	YCI	C08-C09	-5.81	1.39	1.49
2	A	701	YCI	C08-C09	-5.68	1.39	1.49
2	B	701	YCI	C23-C24	-3.53	1.41	1.48
2	A	701	YCI	C23-C24	-3.50	1.41	1.48
2	A	701	YCI	C04-C02	3.23	1.53	1.48
2	B	701	YCI	C04-C02	2.93	1.53	1.48
2	A	701	YCI	F17-S14	2.61	1.61	1.53
2	B	701	YCI	F17-S14	2.58	1.61	1.53
2	B	701	YCI	C23-C07	-2.25	1.38	1.41
2	A	701	YCI	C23-C07	-2.16	1.38	1.41
2	A	701	YCI	O03-C02	2.06	1.27	1.22

All (10) bond angle outliers are listed below:

Mol	Chain	Res	Type	Atoms	Z	Observed(°)	Ideal(°)
2	A	701	YCI	O16-S14-O15	-7.07	101.05	120.92
2	B	701	YCI	O16-S14-O15	-6.81	101.79	120.92
5	B	705	PEG	C3-O2-C2	-2.33	103.08	113.26
2	B	701	YCI	F17-S14-O16	2.18	111.73	106.23
2	A	701	YCI	F17-S14-O15	2.15	111.64	106.23
2	A	701	YCI	C12-O13-S14	-2.14	117.35	121.71
2	A	701	YCI	C08-C07-N06	-2.11	119.27	122.31
2	B	701	YCI	C12-O13-S14	-2.06	117.51	121.71
2	A	701	YCI	C05-C04-C24	-2.02	118.10	119.45
2	B	701	YCI	C08-C07-N06	-2.01	119.42	122.31

There are no chirality outliers.

All (19) torsion outliers are listed below:

Mol	Chain	Res	Type	Atoms
2	B	701	YCI	O01-C02-C04-C24
2	B	701	YCI	O01-C02-C04-C05
2	B	701	YCI	O03-C02-C04-C24
2	B	701	YCI	C12-O13-S14-O15
2	B	701	YCI	O03-C02-C04-C05
2	A	701	YCI	O01-C02-C04-C24
2	A	701	YCI	O03-C02-C04-C24
5	A	709	PEG	O1-C1-C2-O2
2	A	701	YCI	O01-C02-C04-C05
2	A	701	YCI	O03-C02-C04-C05
5	B	705	PEG	O1-C1-C2-O2
5	A	709	PEG	C1-C2-O2-C3
2	B	701	YCI	C12-O13-S14-O16
5	A	709	PEG	O2-C3-C4-O4
3	A	706	EDO	O1-C1-C2-O2
2	B	701	YCI	C20-C08-C09-C10
2	A	701	YCI	C20-C08-C09-C19
2	B	701	YCI	C20-C08-C09-C19
2	A	701	YCI	C20-C08-C09-C10

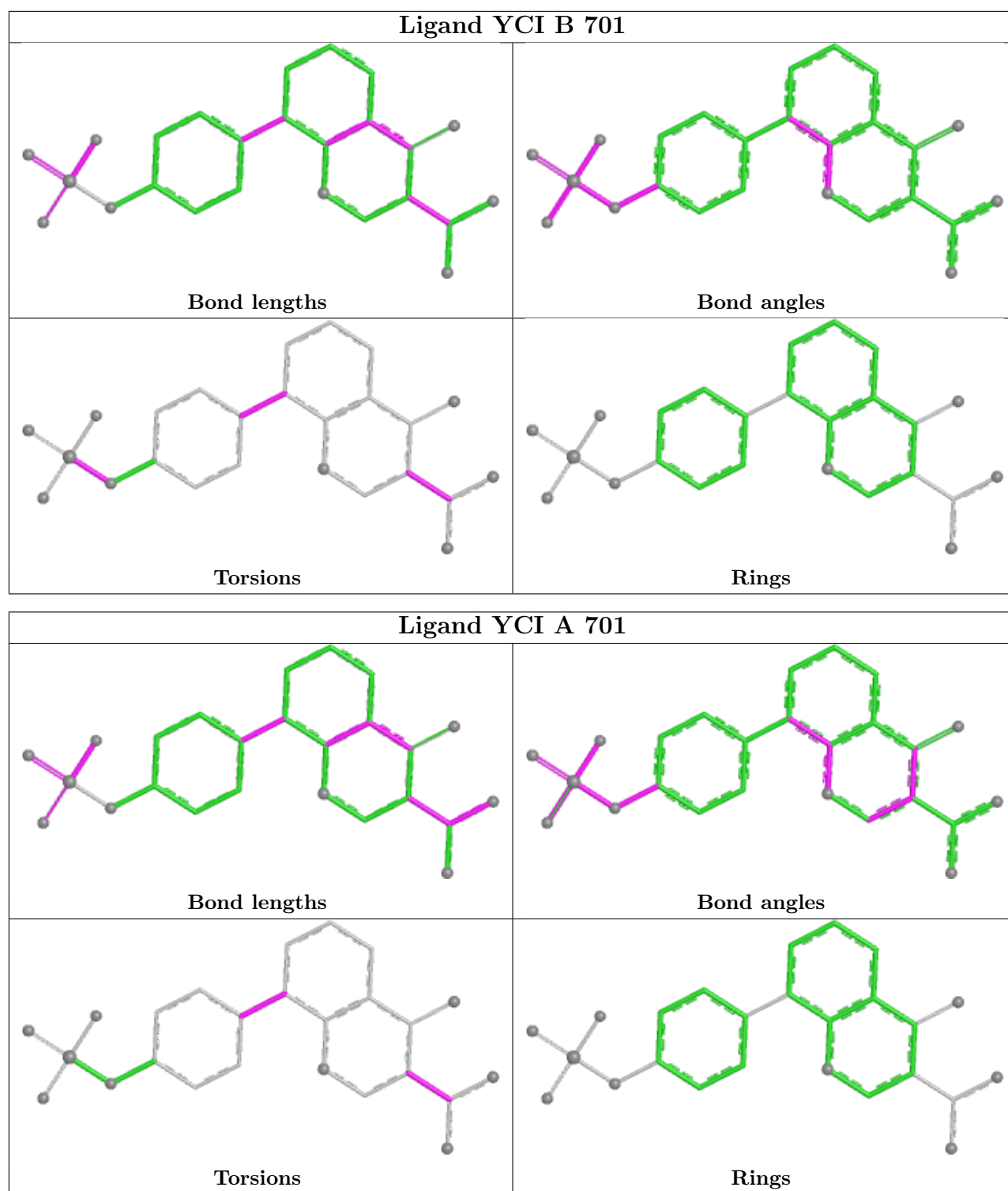
There are no ring outliers.

2 monomers are involved in 12 short contacts:

Mol	Chain	Res	Type	Clashes	Symm-Clashes
5	B	705	PEG	5	0
5	A	709	PEG	7	0

The following is a two-dimensional graphical depiction of Mogul quality analysis of bond lengths, bond angles, torsion angles, and ring geometry for all instances of the Ligand of Interest. In addition, ligands with molecular weight > 250 and outliers as shown on the validation Tables will also be included. For torsion angles, if less than 5% of the Mogul distribution of torsion angles is within 10 degrees of the torsion angle in question, then that torsion angle is considered an outlier. Any bond that is central to one or more torsion angles identified as an outlier by Mogul will be highlighted in the graph. For rings, the root-mean-square deviation (RMSD) between the ring in question and similar rings identified by Mogul is calculated over all ring torsion angles. If the average RMSD is greater than 60 degrees and the minimal RMSD between the ring in question and any Mogul-identified rings is also greater than 60 degrees, then that ring is considered an outlier. The outliers are highlighted in purple. The color gray indicates Mogul did not find sufficient equivalents in the CSD to analyse the geometry.





## 5.7 Other polymers [\(i\)](#)

There are no such residues in this entry.

## 5.8 Polymer linkage issues

There are no chain breaks in this entry.

## 6 Fit of model and data

### 6.1 Protein, DNA and RNA chains

In the following table, the column labelled ‘#RSRZ > 2’ contains the number (and percentage) of RSRZ outliers, followed by percent RSRZ outliers for the chain as percentile scores relative to all X-ray entries and entries of similar resolution. The OWAB column contains the minimum, median, 95<sup>th</sup> percentile and maximum values of the occupancy-weighted average B-factor per residue. The column labelled ‘Q < 0.9’ lists the number of (and percentage) of residues with an average occupancy less than 0.9.

Mol	Chain	Analysed	<RSRZ>	#RSRZ>2	OWAB(Å <sup>2</sup> )	Q<0.9
1	A	441/461 (95%)	0.07	28 (6%) 27 29	7, 20, 45, 75	16 (3%)
1	B	442/461 (95%)	0.56	45 (10%) 13 15	8, 26, 54, 86	20 (4%)
All	All	883/922 (95%)	0.31	73 (8%) 19 20	7, 23, 51, 86	36 (4%)

All (73) RSRZ outliers are listed below:

Mol	Chain	Res	Type	RSRZ
1	B	306	ALA	7.0
1	A	567	MET	5.6
1	A	568	ALA	5.4
1	B	163	PRO	4.1
1	B	559	PHE	4.0
1	B	560	PHE	4.0
1	B	566	PRO	3.9
1	B	563	SER	3.9
1	B	608	SER	3.8
1	A	163	PRO	3.6
1	A	434	SER	3.6
1	A	564	GLN	3.6
1	B	427	SER	3.6
1	B	562	GLY	3.5
1	A	365	SER	3.5
1	B	561	ALA	3.4
1	B	309	THR	3.4
1	B	434	SER	3.4
1	A	561	ALA	3.2
1	A	162	ASN	3.2
1	B	567	MET	3.2
1	A	566	PRO	3.1
1	A	427	SER	3.1
1	B	162	ASN	3.1

*Continued on next page...*

*Continued from previous page...*

Mol	Chain	Res	Type	RSRZ
1	B	307	ASP	3.1
1	A	560	PHE	3.0
1	B	426	GLU	3.0
1	B	568	ALA	2.9
1	A	306	ALA	2.9
1	B	243	LYS	2.9
1	B	384	SER	2.8
1	B	414	SER	2.8
1	B	433	SER	2.8
1	B	558	LYS	2.8
1	B	310	HIS	2.8
1	B	564	GLN	2.8
1	B	387	PRO	2.7
1	B	197	VAL	2.7
1	B	388	ASN	2.7
1	A	388	ASN	2.7
1	B	259	PHE	2.7
1	A	565	GLU	2.6
1	A	563	SER	2.6
1	B	391	SER	2.5
1	A	559	PHE	2.5
1	B	565	GLU	2.5
1	B	425	LYS	2.4
1	B	250	LEU	2.4
1	B	236	ALA	2.4
1	A	433	SER	2.4
1	B	595	VAL	2.3
1	A	558	LYS	2.3
1	A	384	SER	2.3
1	B	365	SER	2.3
1	A	562	GLY	2.3
1	B	205[A]	CYS	2.3
1	B	217	PRO	2.2
1	A	606	VAL	2.2
1	A	590	TRP	2.2
1	B	529	GLY	2.2
1	B	304	ARG	2.2
1	A	390	GLU	2.2
1	B	528	ASN	2.2
1	A	607	PRO	2.2
1	A	307	ASP	2.1
1	A	244	PRO	2.1

*Continued on next page...*

*Continued from previous page...*

Mol	Chain	Res	Type	RSRZ
1	B	308	GLY	2.1
1	B	557	GLN	2.1
1	A	391	SER	2.1
1	B	406	ALA	2.0
1	B	390	GLU	2.0
1	A	180	SER	2.0
1	B	435	VAL	2.0

## 6.2 Non-standard residues in protein, DNA, RNA chains [i](#)

There are no non-standard protein/DNA/RNA residues in this entry.

## 6.3 Carbohydrates [i](#)

There are no monosaccharides in this entry.

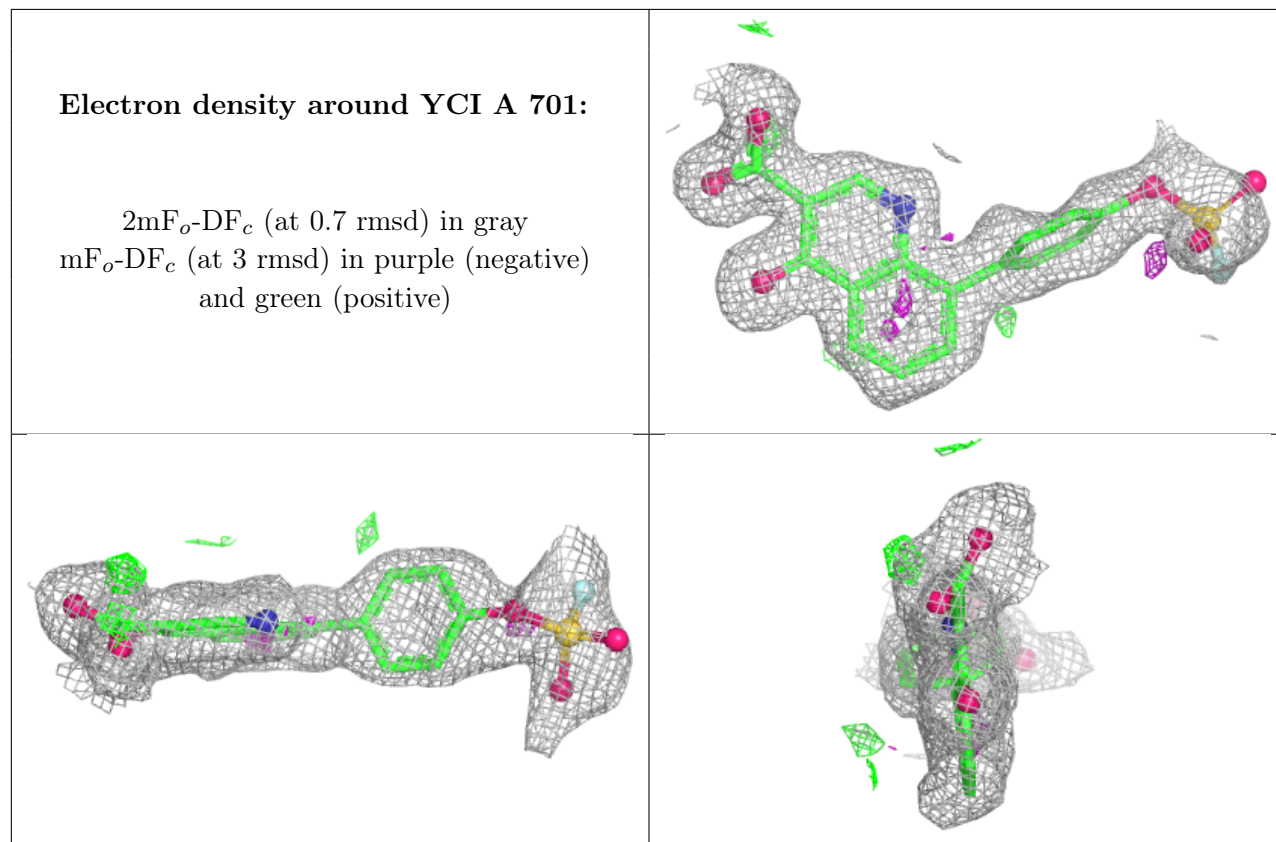
## 6.4 Ligands [i](#)

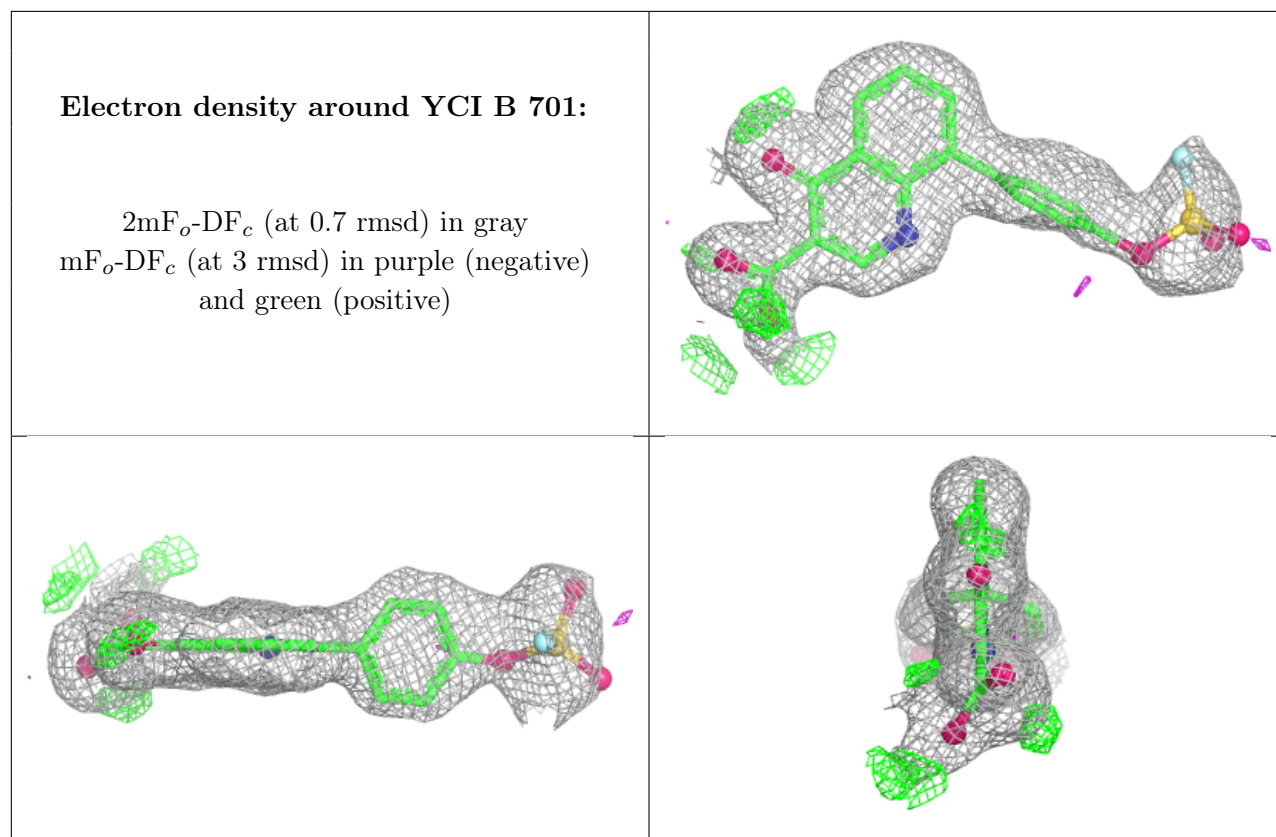
In the following table, the Atoms column lists the number of modelled atoms in the group and the number defined in the chemical component dictionary. The B-factors column lists the minimum, median, 95<sup>th</sup> percentile and maximum values of B factors of atoms in the group. The column labelled 'Q< 0.9' lists the number of atoms with occupancy less than 0.9.

Mol	Type	Chain	Res	Atoms	RSCC	RSR	B-factors(Å <sup>2</sup> )	Q<0.9
4	DMS	B	704	4/4	0.61	0.36	79,84,87,87	0
5	PEG	B	705	7/7	0.79	0.21	18,25,33,37	7
5	PEG	A	709	7/7	0.83	0.19	13,21,32,35	7
3	EDO	A	705	4/4	0.86	0.14	24,27,33,41	0
3	EDO	A	707	4/4	0.87	0.14	52,54,55,56	0
3	EDO	A	706	4/4	0.87	0.18	33,35,35,41	0
2	YCI	A	701	25/25	0.89	0.12	23,35,95,99	0
4	DMS	A	708	4/4	0.91	0.16	44,49,55,58	0
2	YCI	B	701	25/25	0.91	0.12	25,33,87,91	0
3	EDO	A	704	4/4	0.92	0.14	24,34,36,39	0
3	EDO	B	703	4/4	0.92	0.11	25,33,38,39	0
3	EDO	A	703	4/4	0.93	0.13	19,34,34,39	0
3	EDO	B	702	4/4	0.97	0.07	16,17,21,21	0
3	EDO	A	702	4/4	0.97	0.06	15,16,17,19	0

The following is a graphical depiction of the model fit to experimental electron density of all

instances of the Ligand of Interest. In addition, ligands with molecular weight > 250 and outliers as shown on the geometry validation Tables will also be included. Each fit is shown from different orientation to approximate a three-dimensional view.





## 6.5 Other polymers [i](#)

There are no such residues in this entry.