



## Full wwPDB EM Validation Report ⓘ

Nov 16, 2024 – 06:24 AM EST

PDB ID : 8V12  
EMDB ID : EMD-42878  
Title : plasmodium falciparum Niemann-Pick type C1-related protein form II  
Authors : Zhang, Z.; Lyu, M.  
Deposited on : 2023-11-19  
Resolution : 3.81 Å(reported)

This is a Full wwPDB EM Validation Report for a publicly released PDB entry.

We welcome your comments at [validation@mail.wwpdb.org](mailto:validation@mail.wwpdb.org)

A user guide is available at

<https://www.wwpdb.org/validation/2017/EMValidationReportHelp>

with specific help available everywhere you see the ⓘ symbol.

The types of validation reports are described at

<http://www.wwpdb.org/validation/2017/FAQs#types>.

---

The following versions of software and data (see [references ⓘ](#)) were used in the production of this report:

EMDB validation analysis : 0.0.1.dev113  
Mogul : 2022.3.0, CSD as543be (2022)  
MolProbity : 4.02b-467  
buster-report : 1.1.7 (2018)  
Percentile statistics : 20231227.v01 (using entries in the PDB archive December 27th 2023)  
MapQ : 1.9.13  
Ideal geometry (proteins) : Engh & Huber (2001)  
Ideal geometry (DNA, RNA) : Parkinson et al. (1996)  
Validation Pipeline (wwPDB-VP) : 2.39

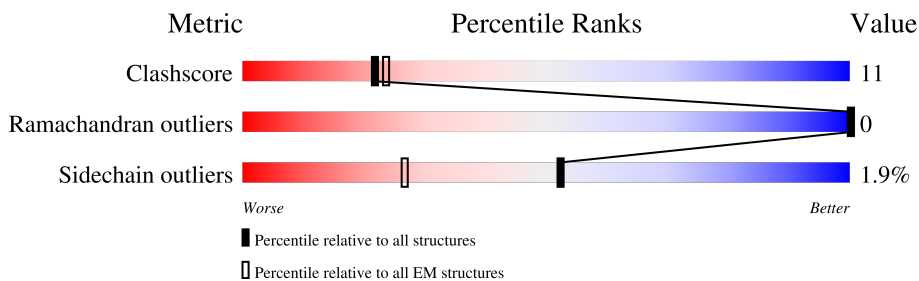
# 1 Overall quality at a glance i

The following experimental techniques were used to determine the structure:

*ELECTRON MICROSCOPY*

The reported resolution of this entry is 3.81 Å.

Percentile scores (ranging between 0-100) for global validation metrics of the entry are shown in the following graphic. The table shows the number of entries on which the scores are based.



Metric	Whole archive (#Entries)	EM structures (#Entries)
Clashscore	210492	15764
Ramachandran outliers	207382	16835
Sidechain outliers	206894	16415

The table below summarises the geometric issues observed across the polymeric chains and their fit to the map. The red, orange, yellow and green segments of the bar indicate the fraction of residues that contain outliers for  $\geq 3$ , 2, 1 and 0 types of geometric quality criteria respectively. A grey segment represents the fraction of residues that are not modelled. The numeric value for each fraction is indicated below the corresponding segment, with a dot representing fractions  $\leq 5\%$ . The upper red bar (where present) indicates the fraction of residues that have poor fit to the EM map (all-atom inclusion  $< 40\%$ ). The numeric value is given above the bar.

Mol	Chain	Length	Quality of chain
1	A	1470	

## 2 Entry composition [i](#)

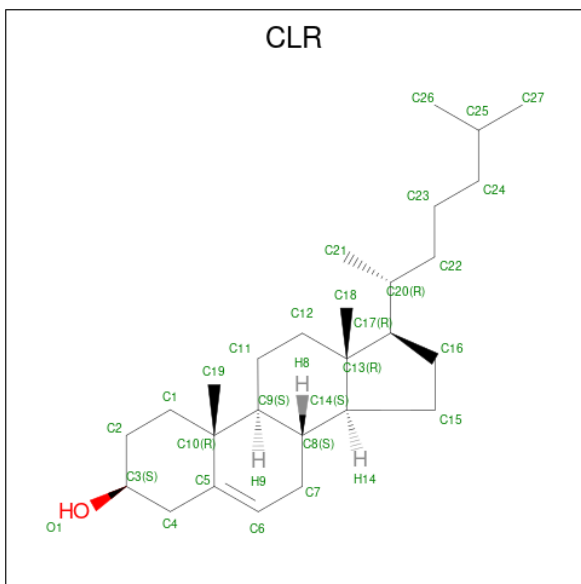
There are 3 unique types of molecules in this entry. The entry contains 7960 atoms, of which 0 are hydrogens and 0 are deuteriums.

In the tables below, the AltConf column contains the number of residues with at least one atom in alternate conformation and the Trace column contains the number of residues modelled with at most 2 atoms.

- Molecule 1 is a protein called Niemann-Pick type C1-related protein.

Mol	Chain	Residues	Atoms					AltConf	Trace
			Total	C	N	O	S		
1	A	979	7918	5196	1242	1436	44	0	0

- Molecule 2 is CHOLESTEROL (three-letter code: CLR) (formula:  $C_{27}H_{46}O$ ) (labeled as "Ligand of Interest" by depositor).



Mol	Chain	Residues	Atoms			AltConf
			Total	C	O	
2	A	1	28	27	1	0

- Molecule 3 is 2-acetamido-2-deoxy-beta-D-glucopyranose (three-letter code: NAG) (formula:  $C_8H_{15}NO_6$ ).



Mol	Chain	Residues	Atoms				AltConf
			Total	C	N	O	
3	A	1	14	8	1	5	0



LYS	SER	THR	I1426	I1327	P1052	LYS	SER
ASN	ASP	ASP	L1429	L1328	M1055	ASN	SER
ILE	ARG	GLN	F1430	T1331	I1056	ILE	SER
LEU	ILE	MET	N1433	I1334	R1061	LEU	PRO
PRO	ASN	ASN	K1434	I1335	V1064	PRO	ASN
ASN	ASN	S1173	D1435	S1340	V1069	ASN	PRO
PRO	P1174	K1175	V1438	C1341	I11080	SER	SER
SER	I1176	N1177	T1439	V1342	M1084	GLU	SER
ASN	K1178	K1178	F1440	I1343	F1085	ILE	ASN
GLU	M1194	M1194	Q1442	I1344	T1086	ASN	GLU
ASN	T1205	T1205	A1345	I1344	I1088	VAL	ASN
GLU	S1206	S1206	A1346	I1347	I1089	LEU	LEU
ASN	F1214	F1214	L1349	I1348	A1108	ASN	ASN
ASN	I1233	I1233	L1350	I1349	D1112	LYS	LYS
ASN	W1237	W1237	I1355	I1355	F1126	THR	THR
LEU	D1241	D1241	T1365	T1365	F1127	THR	THR
LYS	L1254	L1254	M1366	M1366	F1128	GLY	ASN
LYS	Y1265	Y1265	I1369	I1369	D1129	LYS	LYS
LYS	F1266	F1266	I1372	I1372	F1129	LYS	LYS
GLU	Q1267	Q1267	I1373	I1373	G1130	ILE	ILE
ASP	K1268	K1268	L1376	L1376	G1130	LYS	LYS
GLN	M1269	M1269	S1377	S1377	G1130	GLN	GLN
LEU	V1270	V1270	F1380	F1380	Y1137	GLN	SER
THR	D1271	D1271	S1381	S1381	F1138	THR	SER
LYS	D1272	D1272	I1382	I1382	H1141	LYS	LYS
LYS	E1273	E1273	I1385	I1385	F1142	LYS	LYS
ILE	I1275	I1275	S1386	S1386	I1143	ASN	ASN
LYS	W1279	W1279	H1387	H1387	Y1146	VAL	VAL
LYS	L1289	L1289	I1388	I1388	L1149	ASP	ASP
LEU	Q1295	Q1295	A1391	A1391	E1150	LYS	LYS
LEU	M1296	M1296	T1399	T1399	K1151	LEU	LEU
SER	H1300	H1300	R1400	R1400	ASN	SER	SER
ASP	L1301	L1301	D1401	D1401	THR	ILE	ILE
ASP	M1404	M1404	M1404	M1404	LYS	HIS	HIS
ASN	K1405	K1405	K1405	K1405	GLU	ASP	ASP
THR	E1406	E1406	E1406	E1406	ALA	ASN	ASN
TYR	F1305	F1305	E1407	E1407	ALA	ALA	THR
ASP	M1306	M1306	S1407	S1407	ALA	LEU	TYR
ASP	E1307	E1307	L1408	L1408	SER	PHE	ASP
ILE	T1308	T1308	M1411	M1411	PHE	TYR	ILE
ASN	I1312	I1312	I1412	I1412	LEU	ILE	ILE
ASN	T1323	T1323	G1419	G1419	TYR	LYS	ASN
ASN					ASP	Y1047	ASN
LEU					LEU	I1048	SER
						Y1049	ASN

## 4 Experimental information

Property	Value	Source
EM reconstruction method	SINGLE PARTICLE	Depositor
Imposed symmetry	POINT, Not provided	
Number of particles used	56123	Depositor
Resolution determination method	FSC 0.143 CUT-OFF	Depositor
CTF correction method	PHASE FLIPPING AND AMPLITUDE CORRECTION	Depositor
Microscope	FEI TITAN KRIOS	Depositor
Voltage (kV)	300	Depositor
Electron dose ( $e^-/\text{\AA}^2$ )	35.86	Depositor
Minimum defocus (nm)	800	Depositor
Maximum defocus (nm)	1500	Depositor
Magnification	81000	Depositor
Image detector	GATAN K3 BIOQUANTUM (6k x 4k)	Depositor
Maximum map value	0.741	Depositor
Minimum map value	-0.446	Depositor
Average map value	-0.002	Depositor
Map value standard deviation	0.020	Depositor
Recommended contour level	0.1	Depositor
Map size (Å)	321.00003, 321.00003, 321.00003	wwPDB
Map dimensions	300, 300, 300	wwPDB
Map angles (°)	90.0, 90.0, 90.0	wwPDB
Pixel spacing (Å)	1.07, 1.07, 1.07	Depositor

## 5 Model quality i

### 5.1 Standard geometry i

Bond lengths and bond angles in the following residue types are not validated in this section: NAG, CLR

The Z score for a bond length (or angle) is the number of standard deviations the observed value is removed from the expected value. A bond length (or angle) with  $|Z| > 5$  is considered an outlier worth inspection. RMSZ is the root-mean-square of all Z scores of the bond lengths (or angles).

Mol	Chain	Bond lengths		Bond angles	
		RMSZ	# Z  >5	RMSZ	# Z  >5
1	A	0.25	0/8102	0.41	0/10951

There are no bond length outliers.

There are no bond angle outliers.

There are no chirality outliers.

There are no planarity outliers.

### 5.2 Too-close contacts i

In the following table, the Non-H and H(model) columns list the number of non-hydrogen atoms and hydrogen atoms in the chain respectively. The H(added) column lists the number of hydrogen atoms added and optimized by MolProbity. The Clashes column lists the number of clashes within the asymmetric unit, whereas Symm-Clashes lists symmetry-related clashes.

Mol	Chain	Non-H	H(model)	H(added)	Clashes	Symm-Clashes
1	A	7918	0	7880	181	0
2	A	28	0	46	0	0
3	A	14	0	13	0	0
All	All	7960	0	7939	181	0

The all-atom clashscore is defined as the number of clashes found per 1000 atoms (including hydrogen atoms). The all-atom clashscore for this structure is 11.

All (181) close contacts within the same asymmetric unit are listed below, sorted by their clash magnitude.

Atom-1	Atom-2	Interatomic distance (Å)	Clash overlap (Å)
1:A:293:VAL:N	1:A:298:TYR:HH	1.61	0.95

*Continued on next page...*



*Continued from previous page...*

Atom-1	Atom-2	Interatomic distance (Å)	Clash overlap (Å)
1:A:122:VAL:HG22	1:A:445:LYS:HG3	1.68	0.75
1:A:105:LYS:HB2	1:A:458:ILE:HD11	1.67	0.75
1:A:1130:GLY:HA3	1:A:1267:GLN:O	1.89	0.73
1:A:408:TYR:HB2	1:A:417:ILE:HA	1.71	0.70
1:A:322:GLN:HB2	1:A:331:ASN:HA	1.74	0.69
1:A:108:ARG:HG3	1:A:376:ILE:HG21	1.73	0.69
1:A:93:ILE:HG12	1:A:476:VAL:HG23	1.77	0.67
1:A:1064:VAL:HG11	1:A:1412:ILE:HG21	1.77	0.66
1:A:366:PHE:HA	1:A:369:TYR:HD2	1.61	0.66
1:A:409:GLU:HB3	1:A:416:ILE:HB	1.78	0.66
1:A:373:ASN:HB2	1:A:392:ARG:HG3	1.78	0.65
1:A:312:MET:HG3	1:A:313:LEU:HD12	1.78	0.65
1:A:575:ILE:HD11	1:A:603:ILE:HD13	1.79	0.65
1:A:459:ILE:HD13	1:A:472:ILE:HG22	1.78	0.65
1:A:98:ASN:HB2	1:A:464:THR:HG23	1.79	0.64
1:A:98:ASN:ND2	1:A:469:ASP:O	2.30	0.64
1:A:63:ILE:HB	1:A:486:VAL:HG21	1.80	0.64
1:A:606:THR:OG1	1:A:1387:HIS:NE2	2.29	0.63
1:A:58:GLU:OE1	1:A:552:LYS:NZ	2.31	0.63
1:A:1175:LYS:HA	1:A:1178:LYS:HB2	1.79	0.63
1:A:98:ASN:OD1	1:A:98:ASN:N	2.30	0.62
1:A:69:ILE:HG12	1:A:1308:THR:HG22	1.82	0.61
1:A:488:ARG:NH1	1:A:1112:ASP:O	2.33	0.61
1:A:5:ASN:HA	1:A:8:HIS:HD2	1.65	0.60
1:A:69:ILE:H	1:A:1308:THR:HG22	1.66	0.60
1:A:1426:ILE:HG21	1:A:1444:LEU:HD23	1.83	0.60
1:A:320:LYS:HA	1:A:333:ASP:HA	1.84	0.59
1:A:398:MET:SD	1:A:398:MET:N	2.76	0.58
1:A:580:SER:HB3	1:A:1056:ILE:HB	1.87	0.57
1:A:1108:ALA:HB1	1:A:1435:ASP:HB2	1.87	0.57
1:A:122:VAL:CG2	1:A:445:LYS:HG3	2.34	0.56
1:A:339:ASP:HA	1:A:342:LYS:HE3	1.88	0.56
1:A:1331:THR:HG21	1:A:1344:ILE:HG21	1.87	0.56
1:A:1130:GLY:CA	1:A:1267:GLN:O	2.54	0.56
1:A:95:VAL:N	1:A:423:ILE:O	2.38	0.55
1:A:449:TYR:O	1:A:453:TYR:HB2	2.07	0.55
1:A:1435:ASP:HA	1:A:1438:VAL:HG12	1.88	0.55
1:A:68:SER:HA	1:A:1308:THR:HG21	1.89	0.55
1:A:317:ASP:OD1	1:A:323:ASN:ND2	2.39	0.55
1:A:108:ARG:O	1:A:112:LYS:HG3	2.06	0.55
1:A:464:THR:HG22	1:A:467:ASP:H	1.72	0.55

*Continued on next page...*

*Continued from previous page...*

Atom-1	Atom-2	Interatomic distance (Å)	Clash overlap (Å)
1:A:118:LYS:HA	1:A:349:LEU:HD23	1.89	0.55
1:A:1072:LEU:HD12	1:A:1408:LEU:HD11	1.89	0.54
1:A:319:CYS:HB3	1:A:335:ARG:HD3	1.89	0.54
1:A:580:SER:OG	1:A:1061:ARG:NH2	2.40	0.54
1:A:111:GLN:O	1:A:115:GLU:HG2	2.07	0.54
1:A:1141:HIS:HE1	1:A:1178:LYS:HE3	1.72	0.54
1:A:511:ALA:O	1:A:515:ASN:ND2	2.35	0.54
1:A:390:ASN:O	1:A:394:TYR:N	2.40	0.54
1:A:1347:ILE:HG13	1:A:1459:LEU:HD13	1.90	0.53
1:A:1419:GLY:HA3	1:A:1452:ILE:HD11	1.90	0.53
1:A:530:MET:HG3	1:A:650:PHE:CG	2.44	0.53
1:A:109:GLU:HG3	1:A:458:ILE:HG12	1.89	0.52
1:A:572:VAL:HG22	1:A:647:LEU:HD22	1.92	0.52
1:A:140:GLN:HB3	1:A:145:LYS:HD3	1.92	0.52
1:A:605:VAL:HG11	1:A:1334:ILE:HD13	1.91	0.52
1:A:71:ASN:ND2	1:A:74:ALA:H	2.08	0.51
1:A:389:VAL:HA	1:A:396:GLU:HA	1.91	0.51
1:A:14:LYS:NZ	1:A:1335:ILE:O	2.36	0.51
1:A:410:LYS:HA	1:A:415:TYR:HA	1.91	0.51
1:A:355:LYS:NZ	1:A:359:ASP:O	2.36	0.51
1:A:83:ASP:HB3	1:A:312:MET:HB3	1.92	0.51
1:A:1365:THR:OG1	1:A:1366:MET:N	2.44	0.50
1:A:131:LYS:HZ3	1:A:133:ASN:HB3	1.76	0.50
1:A:625:ILE:O	1:A:629:SER:OG	2.29	0.50
1:A:588:ASN:ND2	1:A:659:LYS:HD3	2.26	0.50
1:A:1194:MET:HB2	1:A:1289:LEU:HD11	1.94	0.50
1:A:375:TYR:HB2	1:A:378:TYR:HB2	1.94	0.50
1:A:490:SER:HA	1:A:555:PRO:HB3	1.92	0.50
1:A:293:VAL:N	1:A:298:TYR:OH	2.37	0.50
1:A:1138:PHE:HB3	1:A:1143:ILE:HG13	1.93	0.50
1:A:1400:ARG:HE	1:A:1469:LEU:HB2	1.77	0.50
1:A:587:ASP:HB3	1:A:590:LYS:HB3	1.94	0.50
1:A:600:ALA:HA	1:A:603:ILE:HG12	1.94	0.49
1:A:486:VAL:O	1:A:490:SER:N	2.45	0.49
1:A:1388:ILE:HG13	1:A:1455:SER:HB3	1.95	0.49
1:A:1372:VAL:O	1:A:1376:LEU:HG	2.11	0.49
1:A:583:PHE:CD1	1:A:1052:PRO:HD3	2.48	0.48
1:A:364:SER:HB3	1:A:425:THR:HG23	1.95	0.48
1:A:1355:ILE:HG21	1:A:1447:VAL:HG13	1.96	0.48
1:A:333:ASP:HB3	1:A:336:GLU:HB2	1.95	0.48
1:A:487:ASP:HA	1:A:490:SER:HB3	1.94	0.48

*Continued on next page...*

*Continued from previous page...*

Atom-1	Atom-2	Interatomic distance (Å)	Clash overlap (Å)
1:A:307:GLN:OE1	1:A:307:GLN:N	2.42	0.48
1:A:727:ILE:HD12	1:A:730:LEU:HD23	1.96	0.48
1:A:62:ASP:N	1:A:62:ASP:OD1	2.48	0.47
1:A:618:ALA:HA	1:A:626:CYS:HA	1.95	0.47
1:A:113:PHE:HD1	1:A:453:TYR:CE2	2.32	0.47
1:A:1377:SER:HA	1:A:1380:PHE:CD2	2.50	0.47
1:A:98:ASN:OD1	1:A:471:PHE:N	2.44	0.47
1:A:1382:ILE:HD12	1:A:1385:THR:HB	1.95	0.47
1:A:554:VAL:HB	1:A:556:PRO:HD2	1.96	0.47
1:A:377:ASP:OD1	1:A:377:ASP:N	2.44	0.47
1:A:1137:TYR:HB2	1:A:1296:MET:SD	2.55	0.47
1:A:1443:THR:O	1:A:1447:VAL:HG23	2.15	0.46
1:A:131:LYS:HA	1:A:342:LYS:HE2	1.98	0.46
1:A:485:GLU:O	1:A:488:ARG:HB3	2.15	0.46
1:A:663:ASN:O	1:A:667:GLY:N	2.36	0.46
1:A:1304:ILE:O	1:A:1308:THR:HG23	2.17	0.45
1:A:123:ASP:HA	1:A:346:THR:HG22	1.98	0.45
1:A:26:TYR:HD2	1:A:597:LYS:HB2	1.82	0.45
1:A:440:LEU:HD22	1:A:480:ARG:HD3	1.98	0.45
1:A:1323:THR:O	1:A:1327:ILE:HG12	2.15	0.45
1:A:1089:ILE:HG12	1:A:1350:LEU:HD11	1.98	0.45
1:A:557:ALA:HA	1:A:560:VAL:HG23	1.98	0.45
1:A:368:TYR:CZ	1:A:380:ILE:HG23	2.52	0.45
1:A:400:LYS:HG3	1:A:1129:PHE:CE2	2.52	0.45
1:A:1130:GLY:HA2	1:A:1269:ASN:HB3	1.99	0.45
1:A:356:LYS:HG2	1:A:357:TYR:CD2	2.52	0.44
1:A:1373:ILE:HG13	1:A:1440:PHE:HD1	1.82	0.44
1:A:446:LEU:O	1:A:450:VAL:HG12	2.16	0.44
1:A:71:ASN:HD21	1:A:74:ALA:H	1.64	0.44
1:A:1328:LEU:HD11	1:A:1345:ALA:HB2	1.99	0.44
1:A:334:LEU:HD12	1:A:342:LYS:HG2	1.99	0.44
1:A:386:ASP:HA	1:A:398:MET:HA	1.98	0.44
1:A:1429:LEU:HB2	1:A:1441:PHE:HB2	2.00	0.44
1:A:47:CYS:SG	1:A:537:LEU:HD12	2.59	0.43
1:A:515:ASN:ND2	1:A:528:ALA:HB2	2.33	0.43
1:A:436:GLU:HB3	1:A:437:PRO:HD3	1.99	0.43
1:A:1142:PHE:HD1	1:A:1254:LEU:HD12	1.83	0.43
1:A:95:VAL:HG11	1:A:110:LEU:HD11	2.00	0.43
1:A:1084:MET:O	1:A:1087:ILE:HG22	2.19	0.43
1:A:1085:PHE:CE1	1:A:1458:PHE:HB2	2.54	0.43
1:A:381:LYS:HE3	1:A:416:ILE:HG12	2.00	0.43

*Continued on next page...*

*Continued from previous page...*

Atom-1	Atom-2	Interatomic distance (Å)	Clash overlap (Å)
1:A:731:TYR:CD2	1:A:1406:GLU:HG2	2.53	0.43
1:A:1138:PHE:HB3	1:A:1143:ILE:CG1	2.49	0.43
1:A:1399:THR:HG22	1:A:1401:ASP:H	1.84	0.43
1:A:32:VAL:HG21	1:A:648:LEU:HD23	2.01	0.43
1:A:120:ILE:HD11	1:A:449:TYR:CD2	2.54	0.43
1:A:1052:PRO:HD2	1:A:1055:ASN:HD21	1.84	0.43
1:A:1085:PHE:CZ	1:A:1458:PHE:HB2	2.54	0.43
1:A:1206:SER:O	1:A:1265:TYR:HB2	2.19	0.43
1:A:539:PHE:CZ	1:A:561:PRO:HG3	2.54	0.42
1:A:730:LEU:HD13	1:A:1049:TYR:HB3	2.01	0.42
1:A:1214:PHE:HE1	1:A:1233:ILE:HG22	1.84	0.42
1:A:1237:TRP:NE1	1:A:1241:ASP:OD2	2.52	0.42
1:A:1391:ALA:HB2	1:A:1411:MET:HG3	2.01	0.42
1:A:109:GLU:HA	1:A:112:LYS:HD2	2.01	0.42
1:A:581:LEU:HB3	1:A:723:ILE:CD1	2.49	0.42
1:A:1273:SER:OG	1:A:1306:ASN:OD1	2.36	0.42
1:A:1275:ILE:HG12	1:A:1279:TRP:CE2	2.54	0.42
1:A:1430:PHE:HA	1:A:1441:PHE:CE2	2.54	0.42
1:A:365:LEU:HG	1:A:369:TYR:HE2	1.84	0.42
1:A:86:TYR:CZ	1:A:311:PRO:HG3	2.55	0.42
1:A:400:LYS:HG3	1:A:1129:PHE:HE2	1.84	0.42
1:A:174:LEU:HB3	1:A:178:GLY:HA2	2.02	0.42
1:A:340:GLY:O	1:A:344:GLN:HG2	2.20	0.42
1:A:1076:PHE:CE2	1:A:1080:ILE:HD11	2.55	0.42
1:A:383:ASP:OD1	1:A:384:ASN:N	2.53	0.42
1:A:1126:PHE:O	1:A:1269:ASN:ND2	2.53	0.42
1:A:1064:VAL:HG12	1:A:1069:VAL:HG23	2.01	0.41
1:A:89:ARG:HH21	1:A:443:GLU:CD	2.24	0.41
1:A:128:ASN:O	1:A:131:LYS:HG2	2.20	0.41
1:A:320:LYS:HE2	1:A:320:LYS:HB3	1.82	0.41
1:A:403:LEU:HB2	1:A:406:MET:SD	2.60	0.41
1:A:89:ARG:NH2	1:A:479:ASP:HB2	2.35	0.41
1:A:1089:ILE:HD11	1:A:1350:LEU:HD21	2.03	0.41
1:A:1369:ILE:H	1:A:1369:ILE:HD12	1.85	0.41
1:A:357:TYR:CE2	1:A:395:LYS:HG2	2.55	0.41
1:A:365:LEU:HD22	1:A:403:LEU:HD21	2.02	0.41
1:A:1146:TYR:O	1:A:1149:LEU:HG	2.20	0.41
1:A:119:ASP:O	1:A:120:ILE:C	2.58	0.41
1:A:120:ILE:HB	1:A:442:TYR:OH	2.20	0.41
1:A:177:ASN:N	1:A:177:ASN:OD1	2.53	0.41
1:A:1300:HIS:CE1	1:A:1301:LEU:HG	2.55	0.41

*Continued on next page...*

Continued from previous page...

Atom-1	Atom-2	Interatomic distance (Å)	Clash overlap (Å)
1:A:97:SER:HA	1:A:471:PHE:O	2.20	0.41
1:A:642:MET:O	1:A:646:PHE:N	2.49	0.41
1:A:349:LEU:HB2	1:A:442:TYR:OH	2.20	0.41
1:A:537:LEU:HD13	1:A:537:LEU:HA	1.86	0.41
1:A:1128:ASP:O	1:A:1205:THR:HG21	2.21	0.41
1:A:1177:ASN:HD21	1:A:1295:GLN:N	2.18	0.41
1:A:117:THR:HG21	1:A:427:ILE:HD11	2.02	0.41
1:A:381:LYS:HB3	1:A:414:LYS:HB3	2.02	0.41
1:A:669:PHE:O	1:A:673:ARG:HG3	2.21	0.41
1:A:127:ILE:HG22	1:A:130:CYS:H	1.85	0.40
1:A:1348:ILE:HD13	1:A:1348:ILE:HA	1.86	0.40
1:A:615:LEU:O	1:A:619:ILE:HG12	2.21	0.40
1:A:663:ASN:N	1:A:663:ASN:OD1	2.53	0.40
1:A:1085:PHE:CZ	1:A:1453:THR:HG22	2.57	0.40
1:A:516:VAL:HA	1:A:523:SER:HB2	2.04	0.40
1:A:1404:MET:HG3	1:A:1460:PRO:O	2.22	0.40

There are no symmetry-related clashes.

## 5.3 Torsion angles [i](#)

### 5.3.1 Protein backbone [i](#)

In the following table, the Percentiles column shows the percent Ramachandran outliers of the chain as a percentile score with respect to all PDB entries followed by that with respect to all EM entries.

The Analysed column shows the number of residues for which the backbone conformation was analysed, and the total number of residues.

Mol	Chain	Analysed	Favoured	Allowed	Outliers	Percentiles
1	A	967/1470 (66%)	950 (98%)	17 (2%)	0	<b>100</b> <b>100</b>

There are no Ramachandran outliers to report.

### 5.3.2 Protein sidechains [i](#)

In the following table, the Percentiles column shows the percent sidechain outliers of the chain as a percentile score with respect to all PDB entries followed by that with respect to all EM entries.

The Analysed column shows the number of residues for which the sidechain conformation was analysed, and the total number of residues.

Mol	Chain	Analysed	Rotameric	Outliers	Percentiles
1	A	882/1371 (64%)	865 (98%)	17 (2%)	52 70

All (17) residues with a non-rotameric sidechain are listed below:

Mol	Chain	Res	Type
1	A	8	HIS
1	A	23	ASN
1	A	79	GLU
1	A	98	ASN
1	A	114	GLU
1	A	396	GLU
1	A	408	TYR
1	A	537	LEU
1	A	546	LEU
1	A	629	SER
1	A	663	ASN
1	A	1194	MET
1	A	1254	LEU
1	A	1312	ILE
1	A	1340	SER
1	A	1405	LYS
1	A	1441	PHE

Sometimes sidechains can be flipped to improve hydrogen bonding and reduce clashes. All (8) such sidechains are listed below:

Mol	Chain	Res	Type
1	A	8	HIS
1	A	23	ASN
1	A	71	ASN
1	A	82	ASN
1	A	514	ASN
1	A	588	ASN
1	A	593	GLN
1	A	1141	HIS

### 5.3.3 RNA [i](#)

There are no RNA molecules in this entry.

## 5.4 Non-standard residues in protein, DNA, RNA chains [i](#)

There are no non-standard protein/DNA/RNA residues in this entry.

## 5.5 Carbohydrates [i](#)

There are no oligosaccharides in this entry.

## 5.6 Ligand geometry [i](#)

2 ligands are modelled in this entry.

In the following table, the Counts columns list the number of bonds (or angles) for which Mogul statistics could be retrieved, the number of bonds (or angles) that are observed in the model and the number of bonds (or angles) that are defined in the Chemical Component Dictionary. The Link column lists molecule types, if any, to which the group is linked. The Z score for a bond length (or angle) is the number of standard deviations the observed value is removed from the expected value. A bond length (or angle) with  $|Z| > 2$  is considered an outlier worth inspection. RMSZ is the root-mean-square of all Z scores of the bond lengths (or angles).

Mol	Type	Chain	Res	Link	Bond lengths			Bond angles		
					Counts	RMSZ	# Z  > 2	Counts	RMSZ	# Z  > 2
3	NAG	A	1502	1	14,14,15	0.44	0	17,19,21	0.39	0
2	CLR	A	1501	-	31,31,31	0.37	0	48,48,48	0.51	0

In the following table, the Chirals column lists the number of chiral outliers, the number of chiral centers analysed, the number of these observed in the model and the number defined in the Chemical Component Dictionary. Similar counts are reported in the Torsion and Rings columns. '-' means no outliers of that kind were identified.

Mol	Type	Chain	Res	Link	Chirals	Torsions	Rings
3	NAG	A	1502	1	-	2/6/23/26	0/1/1/1
2	CLR	A	1501	-	-	5/10/68/68	0/4/4/4

There are no bond length outliers.

There are no bond angle outliers.

There are no chirality outliers.

All (7) torsion outliers are listed below:

Mol	Chain	Res	Type	Atoms
3	A	1502	NAG	C8-C7-N2-C2
3	A	1502	NAG	O7-C7-N2-C2

*Continued on next page...*

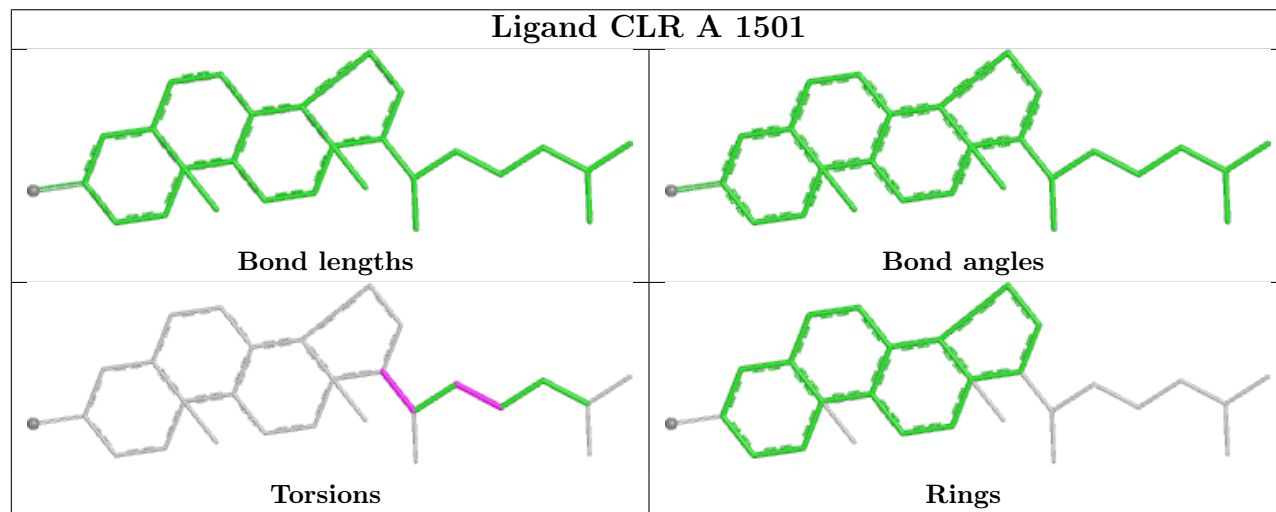
Continued from previous page...

Mol	Chain	Res	Type	Atoms
2	A	1501	CLR	C13-C17-C20-C22
2	A	1501	CLR	C13-C17-C20-C21
2	A	1501	CLR	C16-C17-C20-C22
2	A	1501	CLR	C16-C17-C20-C21
2	A	1501	CLR	C20-C22-C23-C24

There are no ring outliers.

No monomer is involved in short contacts.

The following is a two-dimensional graphical depiction of Mogul quality analysis of bond lengths, bond angles, torsion angles, and ring geometry for all instances of the Ligand of Interest. In addition, ligands with molecular weight > 250 and outliers as shown on the validation Tables will also be included. For torsion angles, if less than 5% of the Mogul distribution of torsion angles is within 10 degrees of the torsion angle in question, then that torsion angle is considered an outlier. Any bond that is central to one or more torsion angles identified as an outlier by Mogul will be highlighted in the graph. For rings, the root-mean-square deviation (RMSD) between the ring in question and similar rings identified by Mogul is calculated over all ring torsion angles. If the average RMSD is greater than 60 degrees and the minimal RMSD between the ring in question and any Mogul-identified rings is also greater than 60 degrees, then that ring is considered an outlier. The outliers are highlighted in purple. The color gray indicates Mogul did not find sufficient equivalents in the CSD to analyse the geometry.



## 5.7 Other polymers [i](#)

There are no such residues in this entry.

## 5.8 Polymer linkage issues [i](#)

There are no chain breaks in this entry.



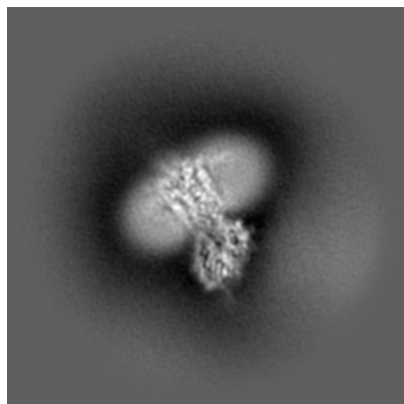
## 6 Map visualisation [i](#)

This section contains visualisations of the EMDB entry EMD-42878. These allow visual inspection of the internal detail of the map and identification of artifacts.

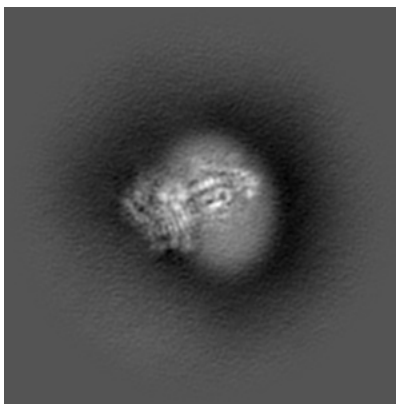
Images derived from a raw map, generated by summing the deposited half-maps, are presented below the corresponding image components of the primary map to allow further visual inspection and comparison with those of the primary map.

### 6.1 Orthogonal projections [i](#)

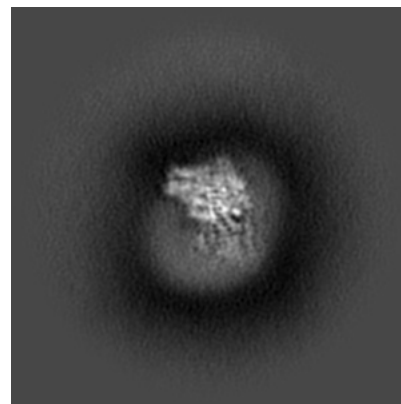
#### 6.1.1 Primary map



X

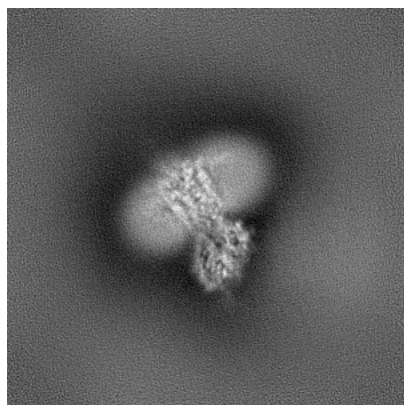


Y

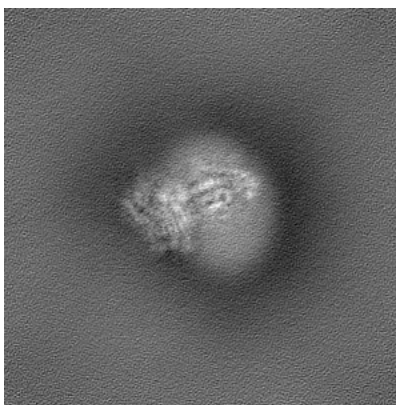


Z

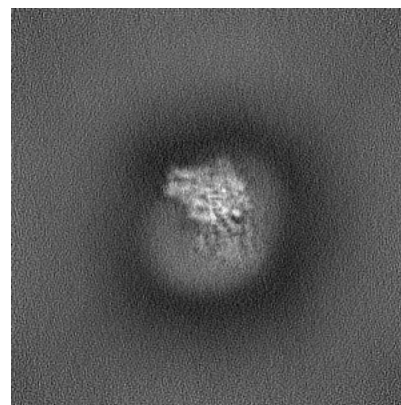
#### 6.1.2 Raw map



X



Y

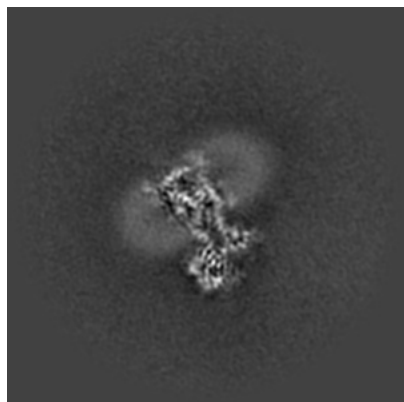


Z

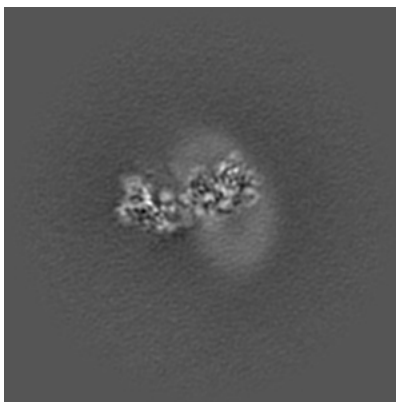
The images above show the map projected in three orthogonal directions.

## 6.2 Central slices [i](#)

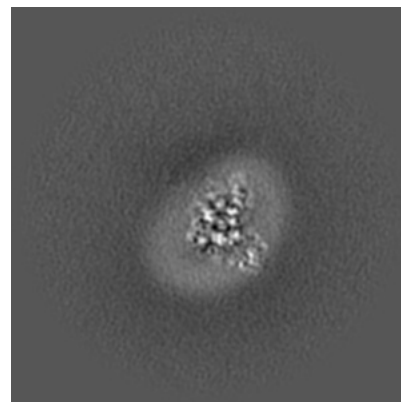
### 6.2.1 Primary map



X Index: 150

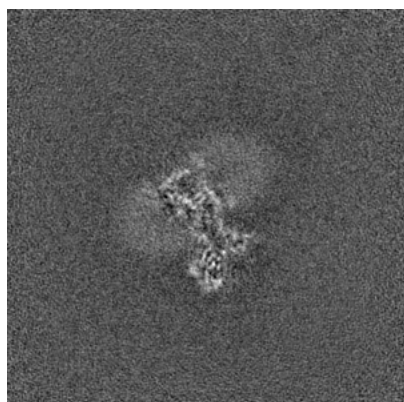


Y Index: 150

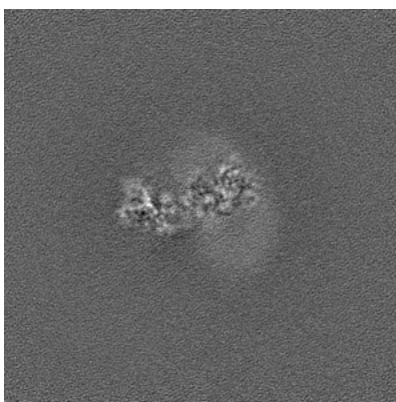


Z Index: 150

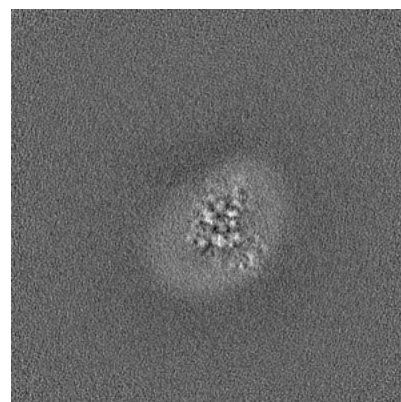
### 6.2.2 Raw map



X Index: 150



Y Index: 150

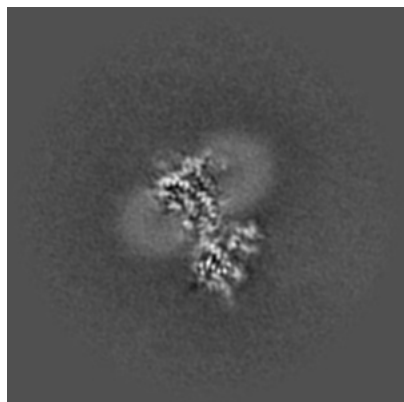


Z Index: 150

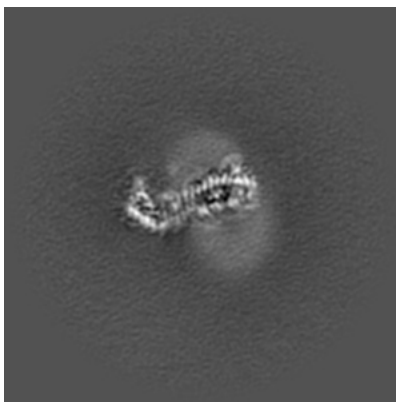
The images above show central slices of the map in three orthogonal directions.

## 6.3 Largest variance slices [i](#)

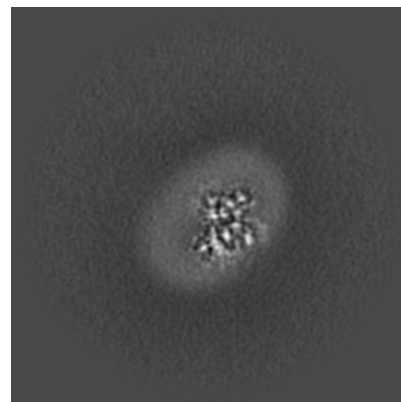
### 6.3.1 Primary map



X Index: 157

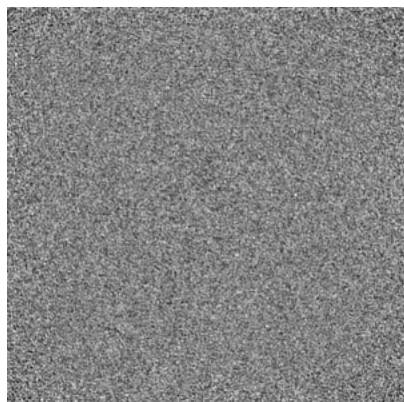


Y Index: 145

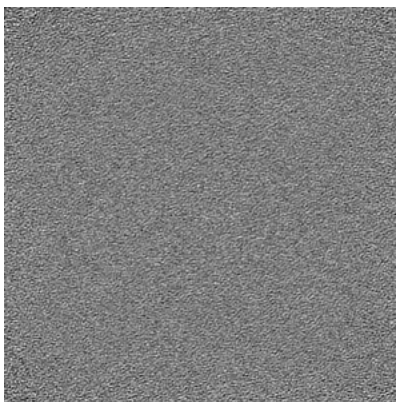


Z Index: 160

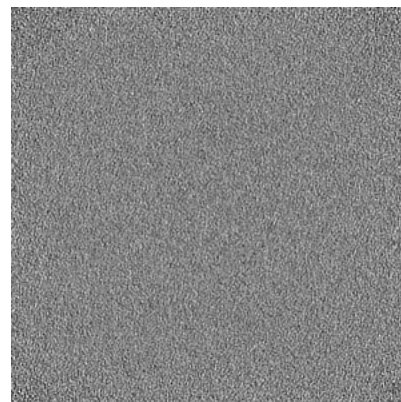
### 6.3.2 Raw map



X Index: 0



Y Index: 0

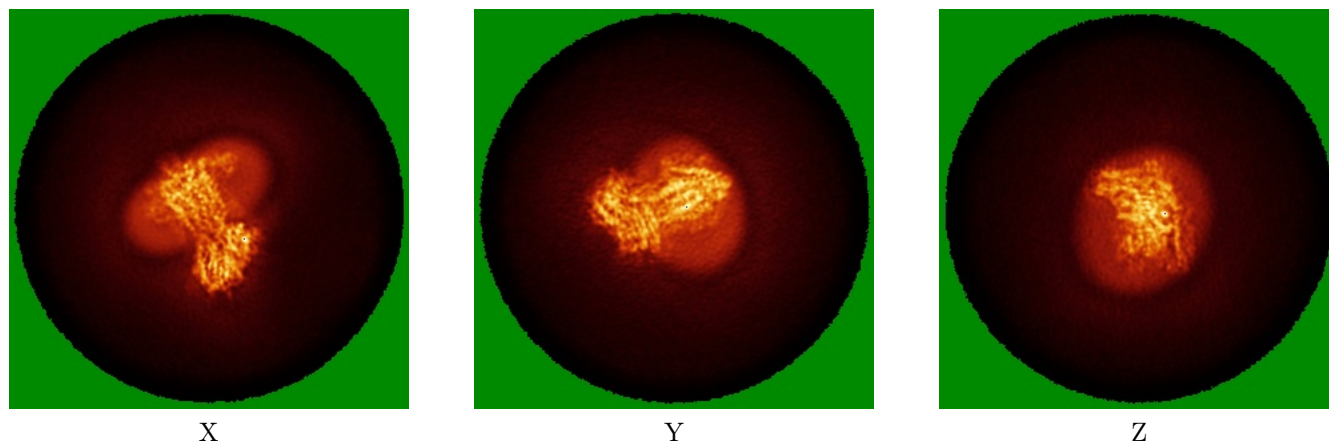


Z Index: 0

The images above show the largest variance slices of the map in three orthogonal directions.

## 6.4 Orthogonal standard-deviation projections (False-color) [i](#)

### 6.4.1 Primary map

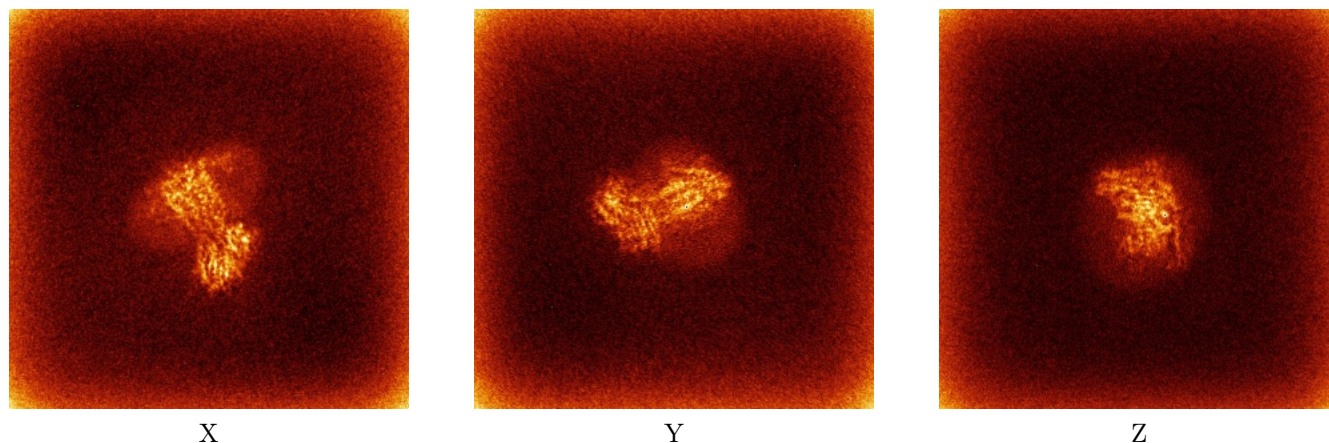


X

Y

Z

### 6.4.2 Raw map



X

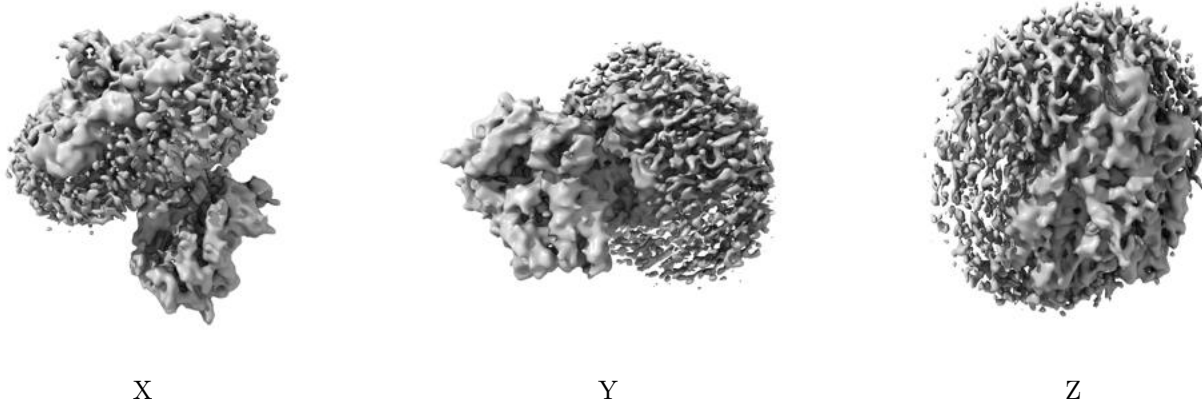
Y

Z

The images above show the map standard deviation projections with false color in three orthogonal directions. Minimum values are shown in green, max in blue, and dark to light orange shades represent small to large values respectively.

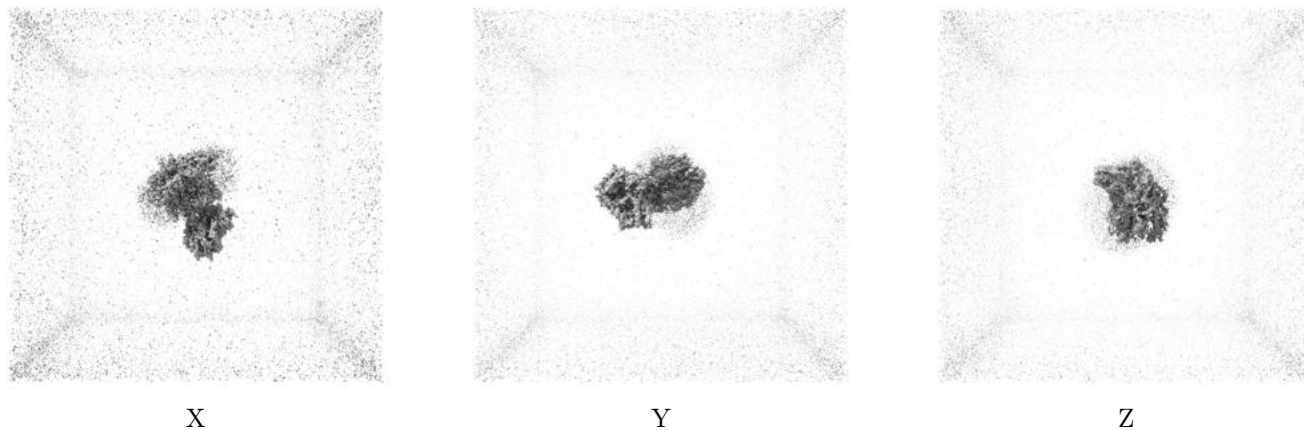
## 6.5 Orthogonal surface views [i](#)

### 6.5.1 Primary map



The images above show the 3D surface view of the map at the recommended contour level 0.1. These images, in conjunction with the slice images, may facilitate assessment of whether an appropriate contour level has been provided.

### 6.5.2 Raw map



These images show the 3D surface of the raw map. The raw map's contour level was selected so that its surface encloses the same volume as the primary map does at its recommended contour level.

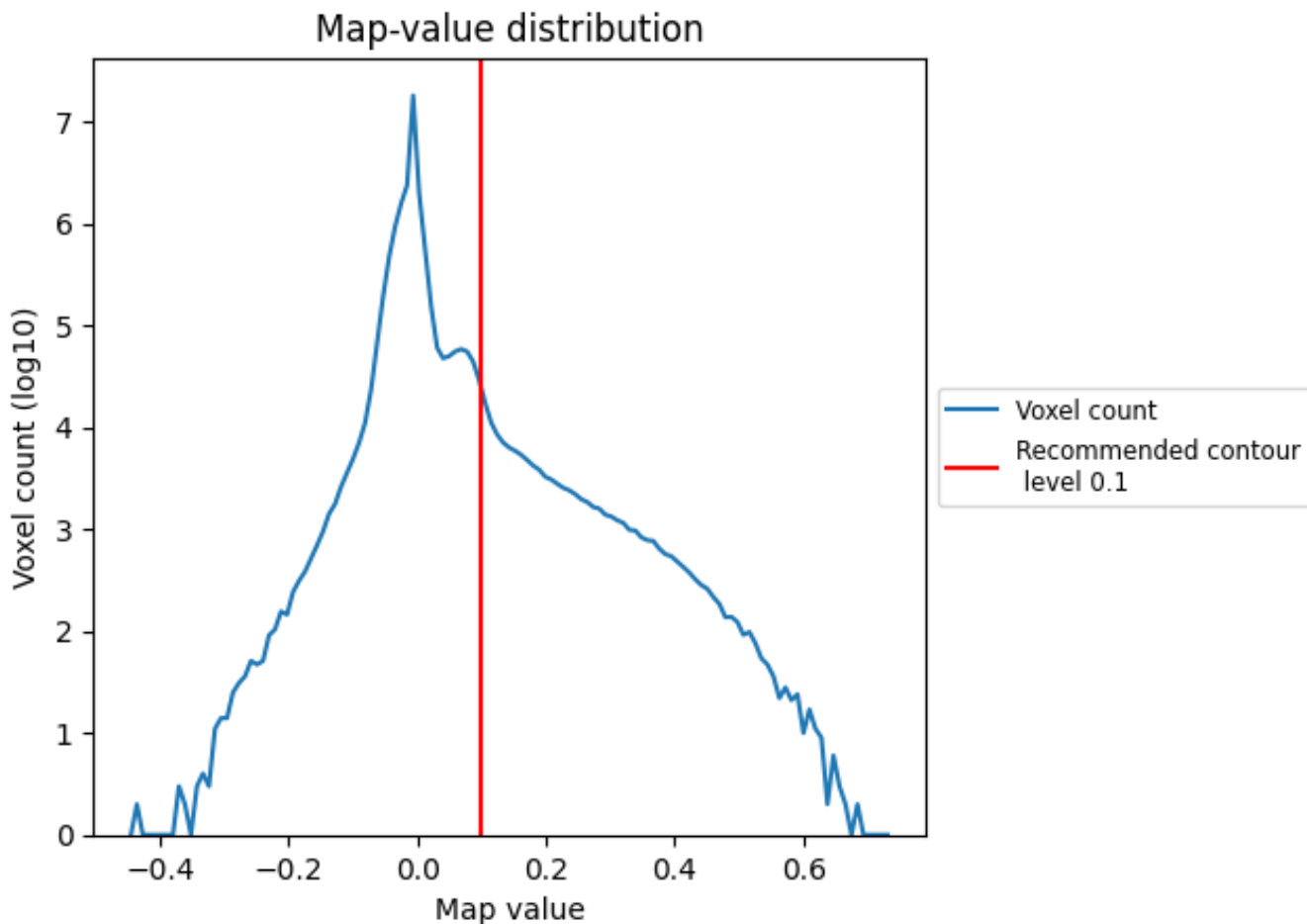
## 6.6 Mask visualisation [i](#)

This section was not generated. No masks/segmentation were deposited.

## 7 Map analysis [i](#)

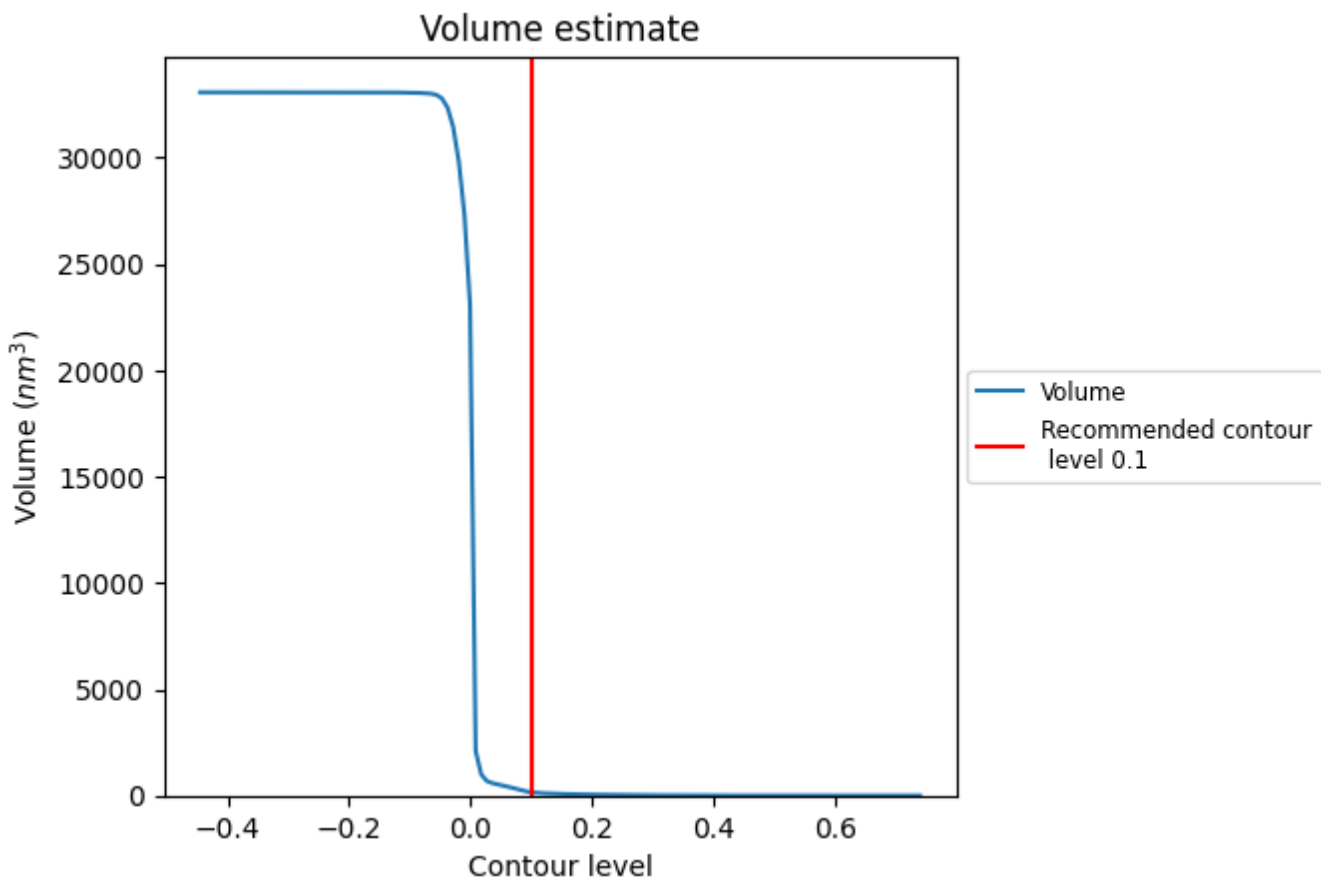
This section contains the results of statistical analysis of the map.

### 7.1 Map-value distribution [i](#)



The map-value distribution is plotted in 128 intervals along the x-axis. The y-axis is logarithmic. A spike in this graph at zero usually indicates that the volume has been masked.

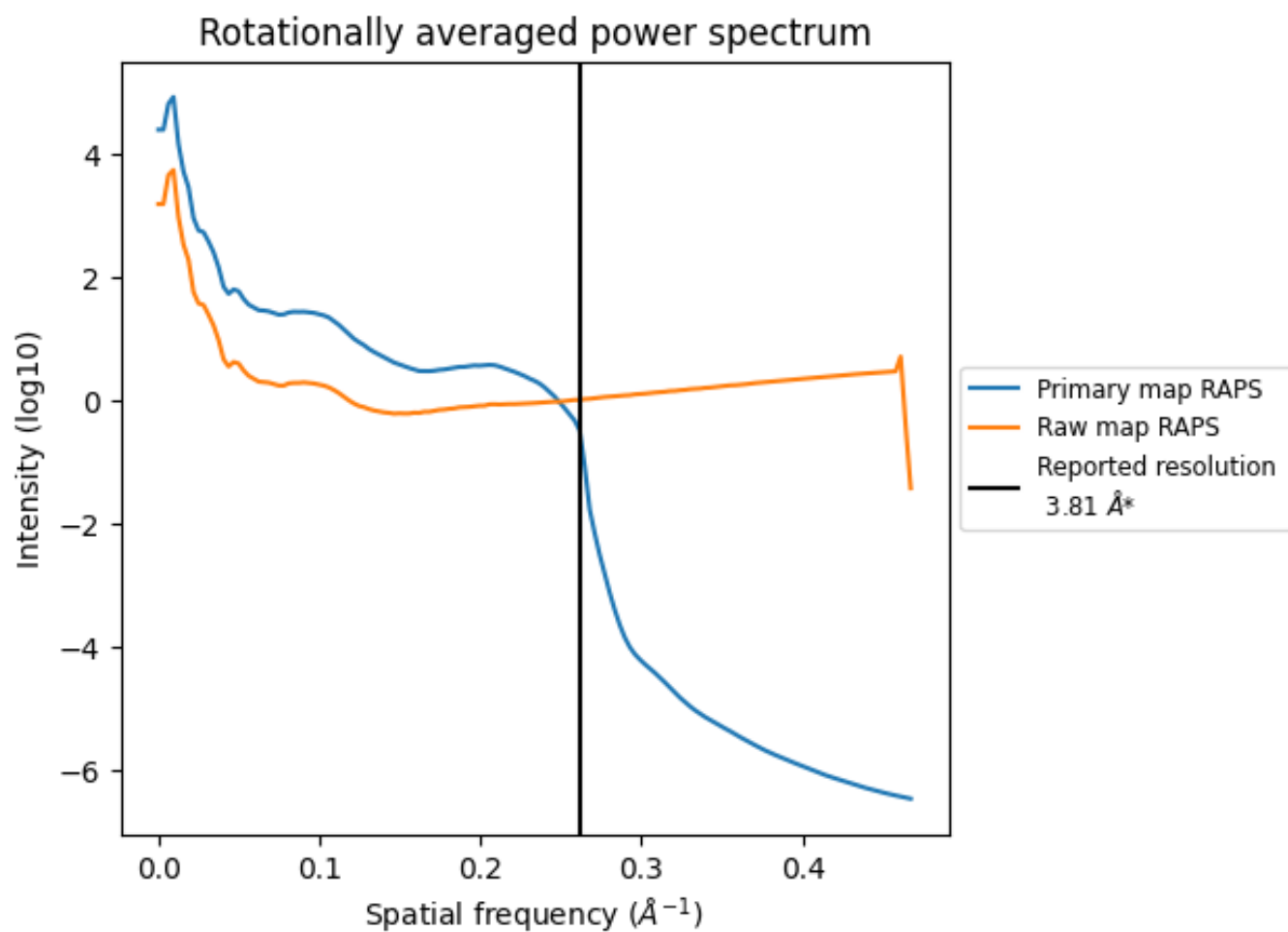
## 7.2 Volume estimate [i](#)



The volume at the recommended contour level is 158 nm<sup>3</sup>; this corresponds to an approximate mass of 142 kDa.

The volume estimate graph shows how the enclosed volume varies with the contour level. The recommended contour level is shown as a vertical line and the intersection between the line and the curve gives the volume of the enclosed surface at the given level.

### 7.3 Rotationally averaged power spectrum i



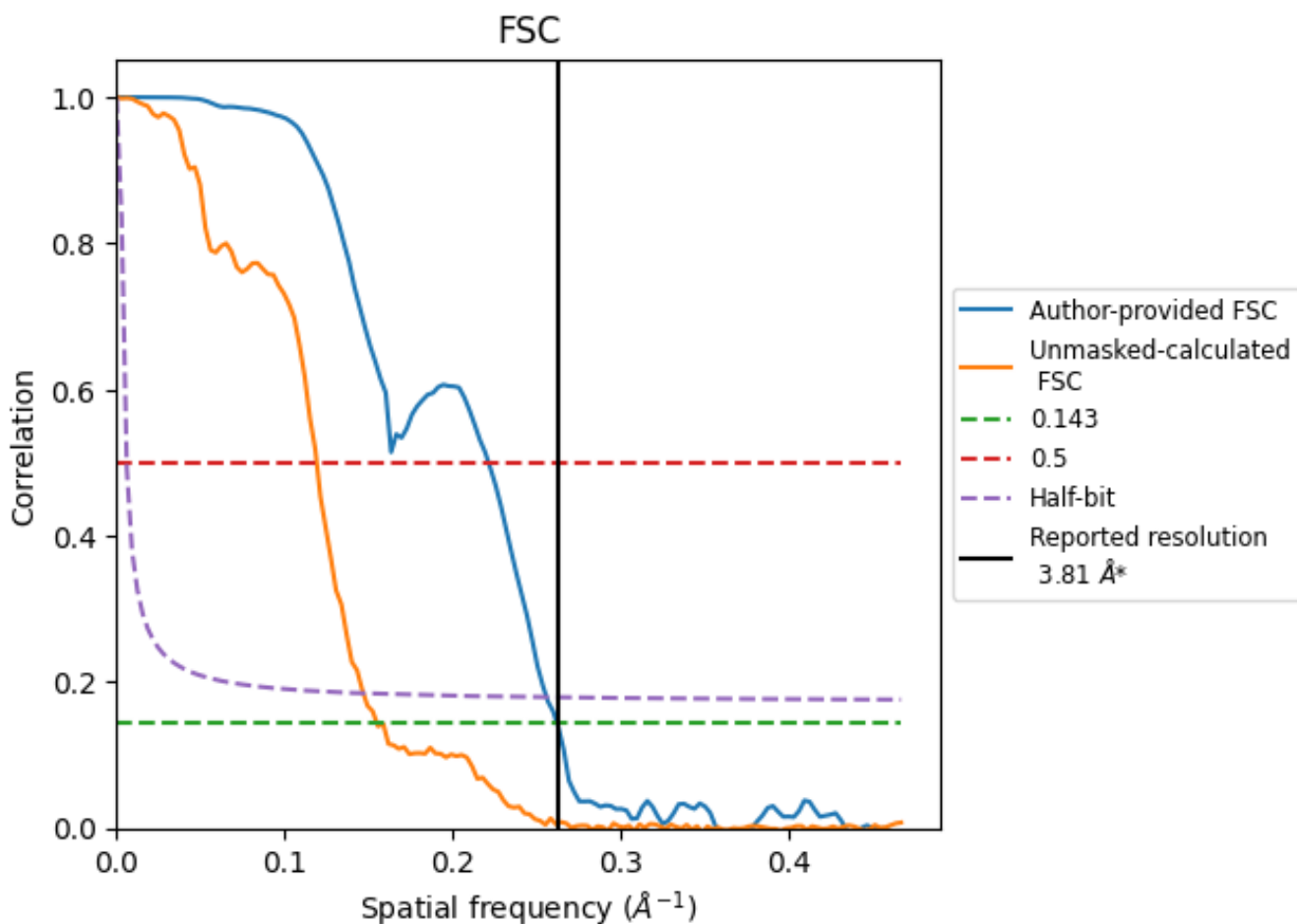
\*Reported resolution corresponds to spatial frequency of 0.262 Å<sup>-1</sup>



## 8 Fourier-Shell correlation [i](#)

Fourier-Shell Correlation (FSC) is the most commonly used method to estimate the resolution of single-particle and subtomogram-averaged maps. The shape of the curve depends on the imposed symmetry, mask and whether or not the two 3D reconstructions used were processed from a common reference. The reported resolution is shown as a black line. A curve is displayed for the half-bit criterion in addition to lines showing the 0.143 gold standard cut-off and 0.5 cut-off.

### 8.1 FSC [i](#)



\*Reported resolution corresponds to spatial frequency of 0.262 Å<sup>-1</sup>

## 8.2 Resolution estimates [i](#)

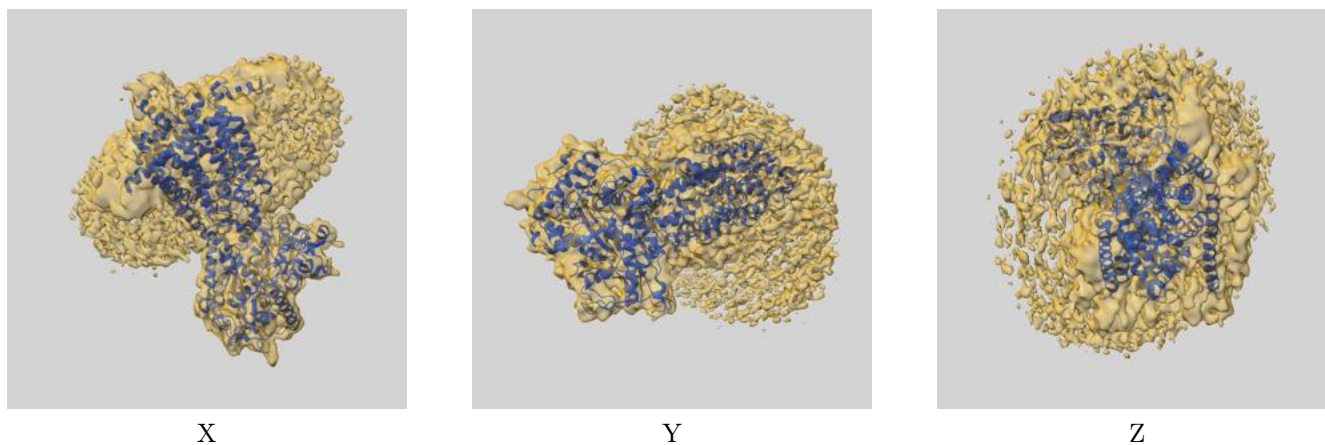
Resolution estimate (Å)	Estimation criterion (FSC cut-off)		
	0.143	0.5	Half-bit
Reported by author	3.81	-	-
Author-provided FSC curve	3.81	4.51	3.90
Unmasked-calculated*	6.45	8.38	6.80

\*Resolution estimate based on FSC curve calculated by comparison of deposited half-maps. The value from deposited half-maps intersecting FSC 0.143 CUT-OFF 6.45 differs from the reported value 3.81 by more than 10 %

## 9 Map-model fit [i](#)

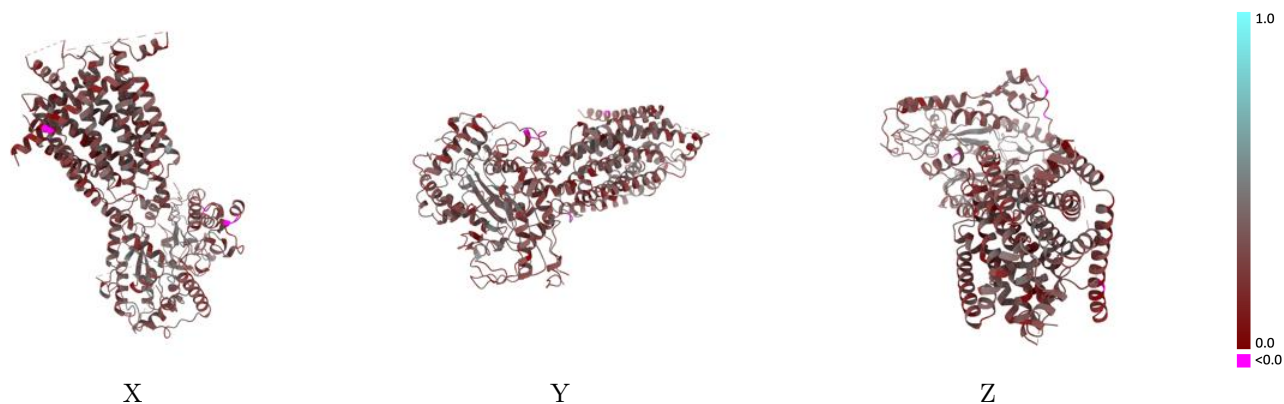
This section contains information regarding the fit between EMDB map EMD-42878 and PDB model 8V12. Per-residue inclusion information can be found in section 3 on page 5.

### 9.1 Map-model overlay [i](#)



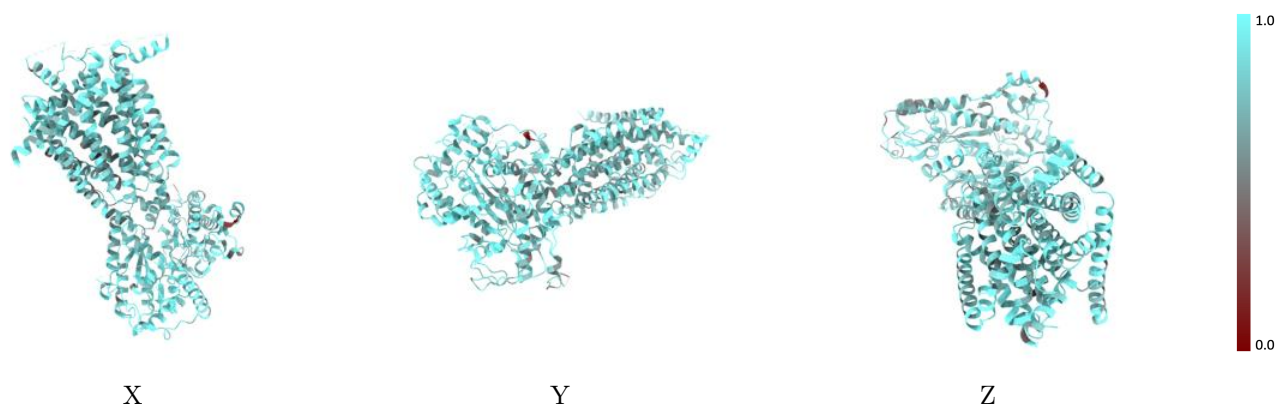
The images above show the 3D surface view of the map at the recommended contour level 0.1 at 50% transparency in yellow overlaid with a ribbon representation of the model coloured in blue. These images allow for the visual assessment of the quality of fit between the atomic model and the map.

## 9.2 Q-score mapped to coordinate model [i](#)



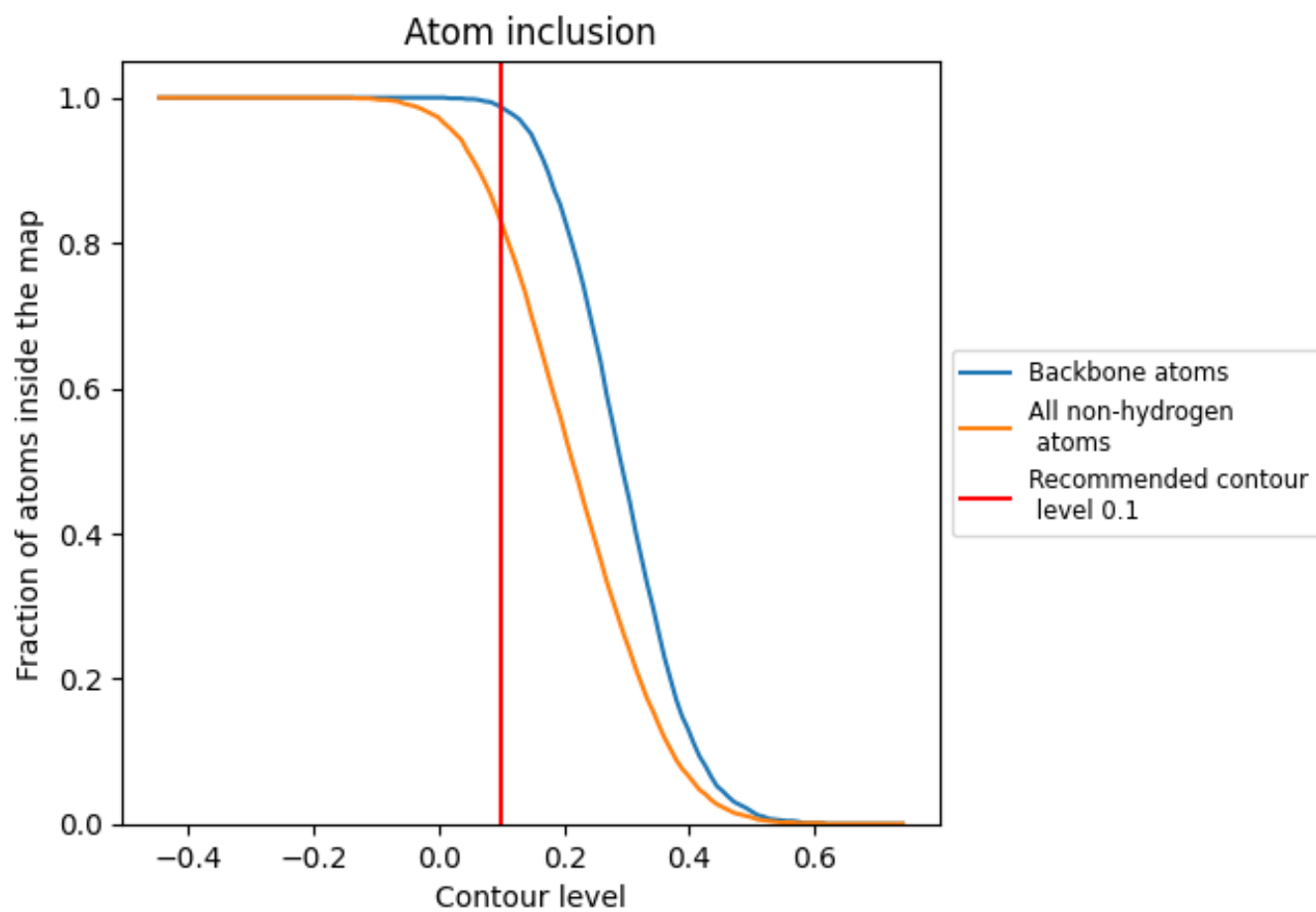
The images above show the model with each residue coloured according to its Q-score. This shows their resolvability in the map with higher Q-score values reflecting better resolvability. Please note: Q-score is calculating the resolvability of atoms, and thus high values are only expected at resolutions at which atoms can be resolved. Low Q-score values may therefore be expected for many entries.

## 9.3 Atom inclusion mapped to coordinate model [i](#)



The images above show the model with each residue coloured according to its atom inclusion. This shows to what extent they are inside the map at the recommended contour level (0.1).





## 9.4 Atom inclusion [i](#)



At the recommended contour level, 99% of all backbone atoms, 83% of all non-hydrogen atoms, are inside the map.

## 9.5 Map-model fit summary

The table lists the average atom inclusion at the recommended contour level (0.1) and Q-score for the entire model and for each chain.

Chain	Atom inclusion	Q-score
All	 0.8280	 0.3020
A	 0.8280	 0.3020

