



# wwPDB X-ray Structure Validation Summary Report

Jun 26, 2024 – 06:45 PM EDT

PDB ID : 8V1O  
Title : Crystal structure of IRAK4 kinase domain with compound 4  
Authors : Weiss, M.M.; Zheng, X.; Browne, C.M.; Campbell, V.; Chen, D.; Enerson, B.;  
Fei, X.; Huang, X.; Klaus, C.R.; Li, H.; Mayo, M.; McDonald, A.A.; Paul, A.;  
Sharma, K.; Shi, Y.; Slavin, A.; Walter, D.M.; Yuan, K.; Zhang, Y.; Zhu, X.;  
Kelleher, J.; Ji, N.; Walker, D.; Mainolfi, N.  
Deposited on : 2023-11-21  
Resolution : 2.92 Å(reported)

This is a wwPDB X-ray Structure Validation Summary Report for a publicly released PDB entry.

We welcome your comments at [validation@mail.wwpdb.org](mailto:validation@mail.wwpdb.org)

A user guide is available at

<https://www.wwpdb.org/validation/2017/XrayValidationReportHelp>

with specific help available everywhere you see the  symbol.

The types of validation reports are described at

<http://www.wwpdb.org/validation/2017/FAQs#types>.

---

The following versions of software and data (see [references](#) ①) were used in the production of this report:

MolProbity : 4.02b-467  
Mogul : 1.8.5 (274361), CSD as541be (2020)  
Xtrriage (Phenix) : 1.13  
EDS : 2.37.1  
buster-report : 1.1.7 (2018)  
Percentile statistics : 20191225.v01 (using entries in the PDB archive December 25th 2019)  
Refmac : 5.8.0158  
CCP4 : 7.0.044 (Gargrove)  
Ideal geometry (proteins) : Engh & Huber (2001)  
Ideal geometry (DNA, RNA) : Parkinson et al. (1996)  
Validation Pipeline (wwPDB-VP) : 2.37.1

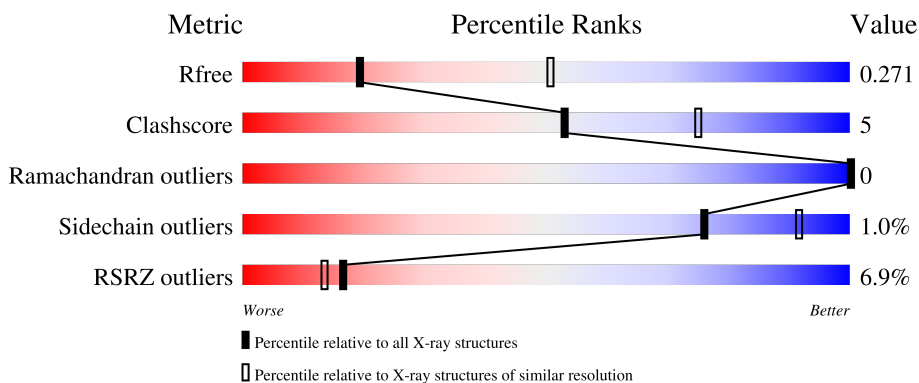
# 1 Overall quality at a glance

The following experimental techniques were used to determine the structure:

*X-RAY DIFFRACTION*

The reported resolution of this entry is 2.92 Å.

Percentile scores (ranging between 0-100) for global validation metrics of the entry are shown in the following graphic. The table shows the number of entries on which the scores are based.



Metric	Whole archive (#Entries)	Similar resolution (#Entries, resolution range(Å))
$R_{free}$	130704	2307 (2.94-2.90)
Clashscore	141614	2531 (2.94-2.90)
Ramachandran outliers	138981	2462 (2.94-2.90)
Sidechain outliers	138945	2464 (2.94-2.90)
RSRZ outliers	127900	2248 (2.94-2.90)

The table below summarises the geometric issues observed across the polymeric chains and their fit to the electron density. The red, orange, yellow and green segments of the lower bar indicate the fraction of residues that contain outliers for  $\geq 3$ , 2, 1 and 0 types of geometric quality criteria respectively. A grey segment represents the fraction of residues that are not modelled. The numeric value for each fraction is indicated below the corresponding segment, with a dot representing fractions  $\leq 5\%$ . The upper red bar (where present) indicates the fraction of residues that have poor fit to the electron density. The numeric value is given above the bar.

Mol	Chain	Length	Quality of chain
1	A	327	
1	B	327	
1	C	327	
1	D	327	

The following table lists non-polymeric compounds, carbohydrate monomers and non-standard

residues in protein, DNA, RNA chains that are outliers for geometric or electron-density-fit criteria:

Mol	Type	Chain	Res	Chirality	Geometry	Clashes	Electron density
3	GOL	A	503	-	-	-	X
5	CL	D	502	-	-	X	-

## 2 Entry composition [i](#)

There are 6 unique types of molecules in this entry. The entry contains 9424 atoms, of which 0 are hydrogens and 0 are deuteriums.

In the tables below, the ZeroOcc column contains the number of atoms modelled with zero occupancy, the AltConf column contains the number of residues with at least one atom in alternate conformation and the Trace column contains the number of residues modelled with at most 2 atoms.

- Molecule 1 is a protein called Interleukin-1 receptor-associated kinase 4.

Mol	Chain	Residues	Atoms						ZeroOcc	AltConf	Trace
			Total	C	N	O	P	S			
1	A	290	2292	1435	385	455	3	14	0	0	0
1	B	289	2285	1431	384	453	3	14	0	0	0
1	C	292	2309	1446	388	458	3	14	0	0	0
1	D	288	2274	1424	382	451	3	14	0	0	0

There are 104 discrepancies between the modelled and reference sequences:

Chain	Residue	Modelled	Actual	Comment	Reference
A	134	MET	-	initiating methionine	UNP Q9NWZ3
A	135	SER	-	expression tag	UNP Q9NWZ3
A	136	TYR	-	expression tag	UNP Q9NWZ3
A	137	TYR	-	expression tag	UNP Q9NWZ3
A	138	HIS	-	expression tag	UNP Q9NWZ3
A	139	HIS	-	expression tag	UNP Q9NWZ3
A	140	HIS	-	expression tag	UNP Q9NWZ3
A	141	HIS	-	expression tag	UNP Q9NWZ3
A	142	HIS	-	expression tag	UNP Q9NWZ3
A	143	HIS	-	expression tag	UNP Q9NWZ3
A	144	ASP	-	expression tag	UNP Q9NWZ3
A	145	TYR	-	expression tag	UNP Q9NWZ3
A	146	ASP	-	expression tag	UNP Q9NWZ3
A	147	ILE	-	expression tag	UNP Q9NWZ3
A	148	PRO	-	expression tag	UNP Q9NWZ3
A	149	THR	-	expression tag	UNP Q9NWZ3
A	150	THR	-	expression tag	UNP Q9NWZ3
A	151	GLU	-	expression tag	UNP Q9NWZ3
A	152	ASN	-	expression tag	UNP Q9NWZ3
A	153	LEU	-	expression tag	UNP Q9NWZ3
A	154	TYR	-	expression tag	UNP Q9NWZ3

*Continued on next page...*

*Continued from previous page...*

Chain	Residue	Modelled	Actual	Comment	Reference
A	155	PHE	-	expression tag	UNP Q9NWZ3
A	156	GLN	-	expression tag	UNP Q9NWZ3
A	157	SER	-	expression tag	UNP Q9NWZ3
A	158	ILE	-	expression tag	UNP Q9NWZ3
A	159	ALA	-	expression tag	UNP Q9NWZ3
B	134	MET	-	initiating methionine	UNP Q9NWZ3
B	135	SER	-	expression tag	UNP Q9NWZ3
B	136	TYR	-	expression tag	UNP Q9NWZ3
B	137	TYR	-	expression tag	UNP Q9NWZ3
B	138	HIS	-	expression tag	UNP Q9NWZ3
B	139	HIS	-	expression tag	UNP Q9NWZ3
B	140	HIS	-	expression tag	UNP Q9NWZ3
B	141	HIS	-	expression tag	UNP Q9NWZ3
B	142	HIS	-	expression tag	UNP Q9NWZ3
B	143	HIS	-	expression tag	UNP Q9NWZ3
B	144	ASP	-	expression tag	UNP Q9NWZ3
B	145	TYR	-	expression tag	UNP Q9NWZ3
B	146	ASP	-	expression tag	UNP Q9NWZ3
B	147	ILE	-	expression tag	UNP Q9NWZ3
B	148	PRO	-	expression tag	UNP Q9NWZ3
B	149	THR	-	expression tag	UNP Q9NWZ3
B	150	THR	-	expression tag	UNP Q9NWZ3
B	151	GLU	-	expression tag	UNP Q9NWZ3
B	152	ASN	-	expression tag	UNP Q9NWZ3
B	153	LEU	-	expression tag	UNP Q9NWZ3
B	154	TYR	-	expression tag	UNP Q9NWZ3
B	155	PHE	-	expression tag	UNP Q9NWZ3
B	156	GLN	-	expression tag	UNP Q9NWZ3
B	157	SER	-	expression tag	UNP Q9NWZ3
B	158	ILE	-	expression tag	UNP Q9NWZ3
B	159	ALA	-	expression tag	UNP Q9NWZ3
C	134	MET	-	initiating methionine	UNP Q9NWZ3
C	135	SER	-	expression tag	UNP Q9NWZ3
C	136	TYR	-	expression tag	UNP Q9NWZ3
C	137	TYR	-	expression tag	UNP Q9NWZ3
C	138	HIS	-	expression tag	UNP Q9NWZ3
C	139	HIS	-	expression tag	UNP Q9NWZ3
C	140	HIS	-	expression tag	UNP Q9NWZ3
C	141	HIS	-	expression tag	UNP Q9NWZ3
C	142	HIS	-	expression tag	UNP Q9NWZ3
C	143	HIS	-	expression tag	UNP Q9NWZ3
C	144	ASP	-	expression tag	UNP Q9NWZ3

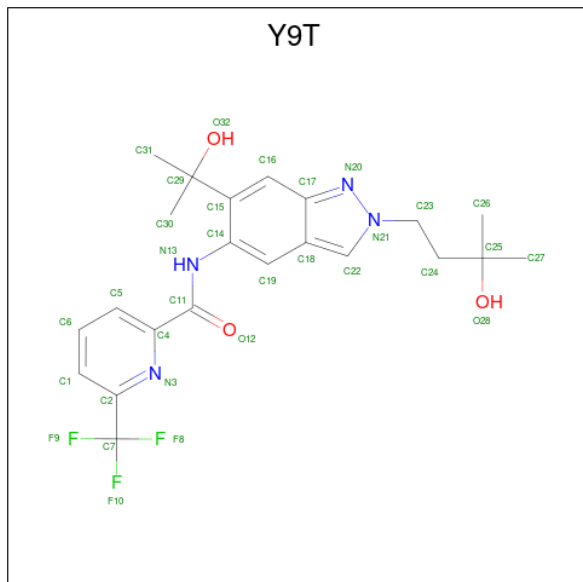
*Continued on next page...*

*Continued from previous page...*

Chain	Residue	Modelled	Actual	Comment	Reference
C	145	TYR	-	expression tag	UNP Q9NWZ3
C	146	ASP	-	expression tag	UNP Q9NWZ3
C	147	ILE	-	expression tag	UNP Q9NWZ3
C	148	PRO	-	expression tag	UNP Q9NWZ3
C	149	THR	-	expression tag	UNP Q9NWZ3
C	150	THR	-	expression tag	UNP Q9NWZ3
C	151	GLU	-	expression tag	UNP Q9NWZ3
C	152	ASN	-	expression tag	UNP Q9NWZ3
C	153	LEU	-	expression tag	UNP Q9NWZ3
C	154	TYR	-	expression tag	UNP Q9NWZ3
C	155	PHE	-	expression tag	UNP Q9NWZ3
C	156	GLN	-	expression tag	UNP Q9NWZ3
C	157	SER	-	expression tag	UNP Q9NWZ3
C	158	ILE	-	expression tag	UNP Q9NWZ3
C	159	ALA	-	expression tag	UNP Q9NWZ3
D	134	MET	-	initiating methionine	UNP Q9NWZ3
D	135	SER	-	expression tag	UNP Q9NWZ3
D	136	TYR	-	expression tag	UNP Q9NWZ3
D	137	TYR	-	expression tag	UNP Q9NWZ3
D	138	HIS	-	expression tag	UNP Q9NWZ3
D	139	HIS	-	expression tag	UNP Q9NWZ3
D	140	HIS	-	expression tag	UNP Q9NWZ3
D	141	HIS	-	expression tag	UNP Q9NWZ3
D	142	HIS	-	expression tag	UNP Q9NWZ3
D	143	HIS	-	expression tag	UNP Q9NWZ3
D	144	ASP	-	expression tag	UNP Q9NWZ3
D	145	TYR	-	expression tag	UNP Q9NWZ3
D	146	ASP	-	expression tag	UNP Q9NWZ3
D	147	ILE	-	expression tag	UNP Q9NWZ3
D	148	PRO	-	expression tag	UNP Q9NWZ3
D	149	THR	-	expression tag	UNP Q9NWZ3
D	150	THR	-	expression tag	UNP Q9NWZ3
D	151	GLU	-	expression tag	UNP Q9NWZ3
D	152	ASN	-	expression tag	UNP Q9NWZ3
D	153	LEU	-	expression tag	UNP Q9NWZ3
D	154	TYR	-	expression tag	UNP Q9NWZ3
D	155	PHE	-	expression tag	UNP Q9NWZ3
D	156	GLN	-	expression tag	UNP Q9NWZ3
D	157	SER	-	expression tag	UNP Q9NWZ3
D	158	ILE	-	expression tag	UNP Q9NWZ3
D	159	ALA	-	expression tag	UNP Q9NWZ3

- Molecule 2 is N-[2-(3-hydroxy-3-methylbutyl)-6-(2-hydroxypropan-2-yl)-2H-indazol-5-yl]-6-(

trifluoromethyl)pyridine-2-carboxamide (three-letter code: Y9T) (formula:  $C_{22}H_{25}F_3N_4O_3$ ) (labeled as "Ligand of Interest" by depositor).



Mol	Chain	Residues	Atoms					ZeroOcc	AltConf
			Total	C	F	N	O		
2	A	1	Total 32	22	3	4	3	0	0
2	B	1	Total 32	22	3	4	3	0	0
2	C	1	Total 32	22	3	4	3	0	0
2	D	1	Total 32	22	3	4	3	0	0

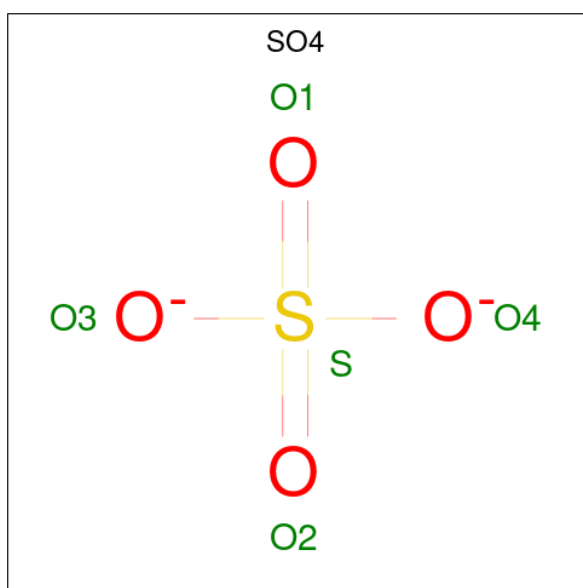
- Molecule 3 is GLYCEROL (three-letter code: GOL) (formula:  $C_3H_8O_3$ ).





Mol	Chain	Residues	Atoms	ZeroOcc	AltConf
3	A	1	Total C O 6 3 3	0	0
3	A	1	Total C O 6 3 3	0	0

- Molecule 4 is SULFATE ION (three-letter code: SO4) (formula: O<sub>4</sub>S).



Mol	Chain	Residues	Atoms	ZeroOcc	AltConf
4	A	1	Total O S 5 4 1	0	0

- Molecule 5 is CHLORIDE ION (three-letter code: CL) (formula: Cl).

Mol	Chain	Residues	Atoms	ZeroOcc	AltConf
5	D	1	Total Cl 1 1	0	0

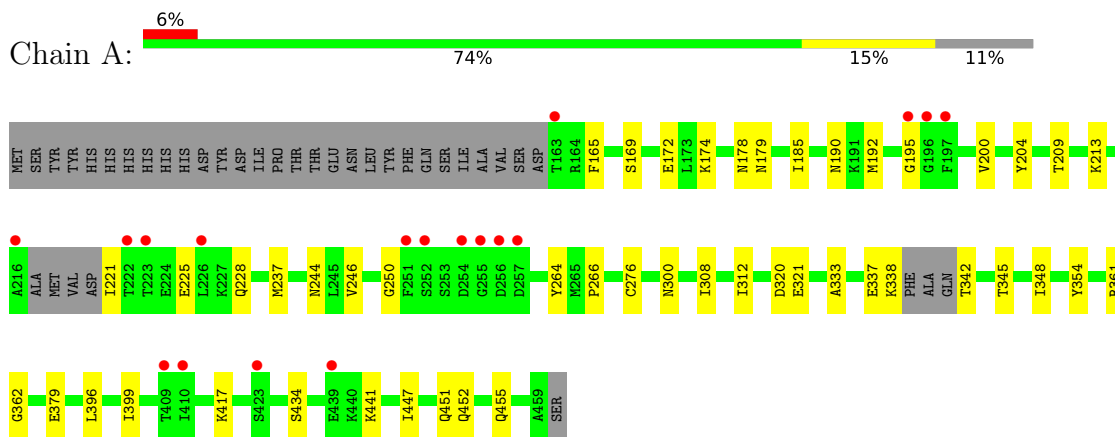
- Molecule 6 is water.

Mol	Chain	Residues	Atoms	ZeroOcc	AltConf
6	A	34	Total O 34 34	0	0
6	B	29	Total O 29 29	0	0
6	C	36	Total O 36 36	0	0
6	D	19	Total O 19 19	0	0

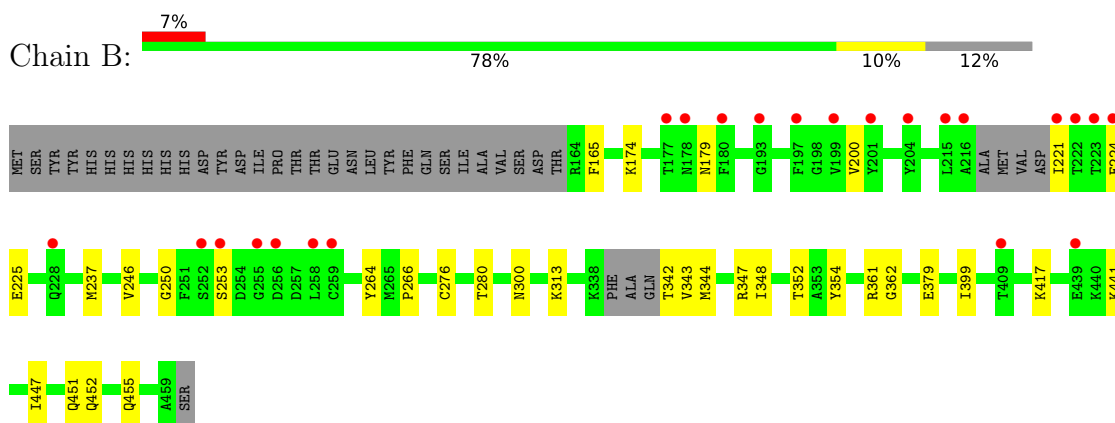
### 3 Residue-property plots [i](#)

These plots are drawn for all protein, RNA, DNA and oligosaccharide chains in the entry. The first graphic for a chain summarises the proportions of the various outlier classes displayed in the second graphic. The second graphic shows the sequence view annotated by issues in geometry and electron density. Residues are color-coded according to the number of geometric quality criteria for which they contain at least one outlier: green = 0, yellow = 1, orange = 2 and red = 3 or more. A red dot above a residue indicates a poor fit to the electron density ( $RSRZ > 2$ ). Stretches of 2 or more consecutive residues without any outlier are shown as a green connector. Residues present in the sample, but not in the model, are shown in grey.

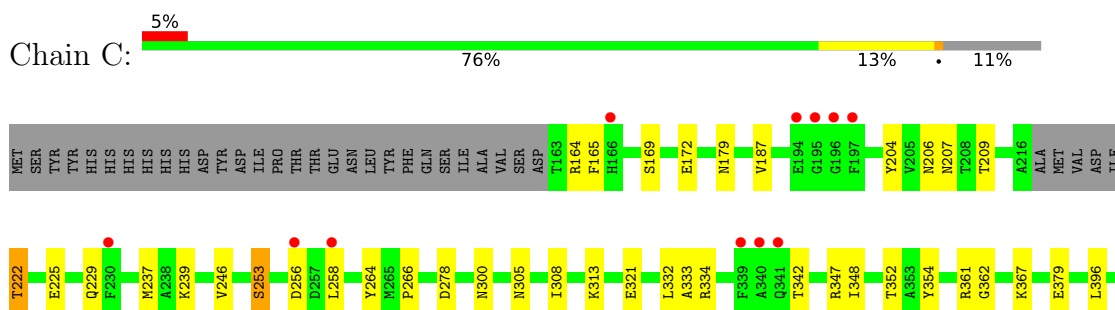
- Molecule 1: Interleukin-1 receptor-associated kinase 4

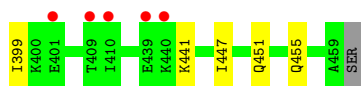


- Molecule 1: Interleukin-1 receptor-associated kinase 4

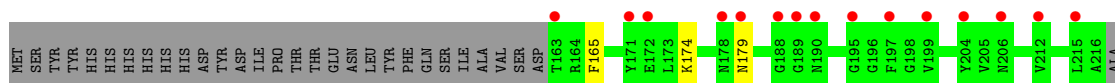
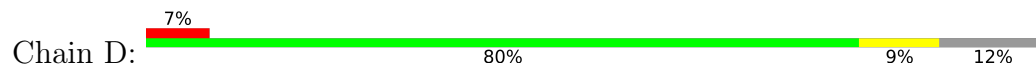


- Molecule 1: Interleukin-1 receptor-associated kinase 4





- Molecule 1: Interleukin-1 receptor-associated kinase 4



## 4 Data and refinement statistics

Property	Value	Source
Space group	C 1 2 1	Depositor
Cell constants a, b, c, $\alpha$ , $\beta$ , $\gamma$	142.85Å 140.49Å 87.94Å 90.00° 123.73° 90.00°	Depositor
Resolution (Å)	47.87 – 2.92 47.88 – 2.92	Depositor EDS
% Data completeness (in resolution range)	98.8 (47.87-2.92) 98.8 (47.88-2.92)	Depositor EDS
$R_{merge}$	0.20	Depositor
$R_{sym}$	(Not available)	Depositor
$\langle I/\sigma(I) \rangle$ <sup>1</sup>	2.39 (at 2.91Å)	Xtrriage
Refinement program	REFMAC 5.8.0232	Depositor
R, $R_{free}$	0.216 , 0.266 0.219 , 0.271	Depositor DCC
$R_{free}$ test set	1524 reflections (4.92%)	wwPDB-VP
Wilson B-factor (Å <sup>2</sup> )	57.3	Xtrriage
Anisotropy	0.063	Xtrriage
Bulk solvent $k_{sol}$ (e/Å <sup>3</sup> ), $B_{sol}$ (Å <sup>2</sup> )	0.32 , 39.0	EDS
L-test for twinning <sup>2</sup>	$\langle  L  \rangle = 0.50$ , $\langle L^2 \rangle = 0.33$	Xtrriage
Estimated twinning fraction	No twinning to report.	Xtrriage
$F_o, F_c$ correlation	0.93	EDS
Total number of atoms	9424	wwPDB-VP
Average B, all atoms (Å <sup>2</sup> )	66.0	wwPDB-VP

Xtrriage's analysis on translational NCS is as follows: *The analyses of the Patterson function reveals a significant off-origin peak that is 26.69 % of the origin peak, indicating pseudo-translational symmetry. The chance of finding a peak of this or larger height randomly in a structure without pseudo-translational symmetry is equal to 2.5146e-03. The detected translational NCS is most likely also responsible for the elevated intensity ratio.*

<sup>1</sup>Intensities estimated from amplitudes.

<sup>2</sup>Theoretical values of  $\langle |L| \rangle$ ,  $\langle L^2 \rangle$  for acentric reflections are 0.5, 0.333 respectively for untwinned datasets, and 0.375, 0.2 for perfectly twinned datasets.

## 5 Model quality [i](#)

### 5.1 Standard geometry [i](#)

Bond lengths and bond angles in the following residue types are not validated in this section: GOL, SO4, TPO, Y9T, SEP, CL

The Z score for a bond length (or angle) is the number of standard deviations the observed value is removed from the expected value. A bond length (or angle) with  $|Z| > 5$  is considered an outlier worth inspection. RMSZ is the root-mean-square of all Z scores of the bond lengths (or angles).

Mol	Chain	Bond lengths		Bond angles	
		RMSZ	# Z  >5	RMSZ	# Z  >5
1	A	0.69	0/2296	0.82	0/3092
1	B	0.68	0/2289	0.81	0/3082
1	C	0.69	0/2314	0.82	0/3116
1	D	0.69	0/2278	0.83	0/3069
All	All	0.69	0/9177	0.82	0/12359

There are no bond length outliers.

There are no bond angle outliers.

There are no chirality outliers.

There are no planarity outliers.

### 5.2 Too-close contacts [i](#)

In the following table, the Non-H and H(model) columns list the number of non-hydrogen atoms and hydrogen atoms in the chain respectively. The H(added) column lists the number of hydrogen atoms added and optimized by MolProbity. The Clashes column lists the number of clashes within the asymmetric unit, whereas Symm-Clashes lists symmetry-related clashes.

Mol	Chain	Non-H	H(model)	H(added)	Clashes	Symm-Clashes
1	A	2292	0	2257	30	0
1	B	2285	0	2250	22	0
1	C	2309	0	2266	30	0
1	D	2274	0	2238	18	0
2	A	32	0	0	2	0
2	B	32	0	0	2	0
2	C	32	0	0	1	0
2	D	32	0	0	1	0
3	A	12	0	16	1	0

*Continued on next page...*

Continued from previous page...

Mol	Chain	Non-H	H(model)	H(added)	Clashes	Symm-Clashes
4	A	5	0	0	0	0
5	D	1	0	0	2	0
6	A	34	0	0	4	0
6	B	29	0	0	3	0
6	C	36	0	0	1	0
6	D	19	0	0	0	0
All	All	9424	0	9027	99	0

The all-atom clashscore is defined as the number of clashes found per 1000 atoms (including hydrogen atoms). The all-atom clashscore for this structure is 5.

The worst 5 of 99 close contacts within the same asymmetric unit are listed below, sorted by their clash magnitude.

Atom-1	Atom-2	Interatomic distance (Å)	Clash overlap (Å)
1:D:174:LYS:HE2	1:D:179:ASN:HD22	1.40	0.86
1:A:300:ASN:HA	1:A:447:ILE:HG21	1.76	0.68
1:C:204:TYR:HE1	1:C:209:THR:HG1	1.43	0.66
1:B:300:ASN:HA	1:B:447:ILE:HG21	1.77	0.66
1:D:300:ASN:HA	1:D:447:ILE:HG21	1.76	0.65

There are no symmetry-related clashes.

## 5.3 Torsion angles [i](#)

### 5.3.1 Protein backbone [i](#)

In the following table, the Percentiles column shows the percent Ramachandran outliers of the chain as a percentile score with respect to all X-ray entries followed by that with respect to entries of similar resolution.

The Analysed column shows the number of residues for which the backbone conformation was analysed, and the total number of residues.

Mol	Chain	Analysed	Favoured	Allowed	Outliers	Percentiles	
1	A	282/327 (86%)	265 (94%)	17 (6%)	0	100	100
1	B	281/327 (86%)	263 (94%)	18 (6%)	0	100	100
1	C	285/327 (87%)	267 (94%)	18 (6%)	0	100	100
1	D	280/327 (86%)	264 (94%)	16 (6%)	0	100	100
All	All	1128/1308 (86%)	1059 (94%)	69 (6%)	0	100	100

There are no Ramachandran outliers to report.

### 5.3.2 Protein sidechains [i](#)

In the following table, the Percentiles column shows the percent sidechain outliers of the chain as a percentile score with respect to all X-ray entries followed by that with respect to entries of similar resolution.

The Analysed column shows the number of residues for which the sidechain conformation was analysed, and the total number of residues.

Mol	Chain	Analysed	Rotameric	Outliers	Percentiles	
1	A	250/284 (88%)	249 (100%)	1 (0%)	91	97
1	B	249/284 (88%)	247 (99%)	2 (1%)	81	93
1	C	251/284 (88%)	246 (98%)	5 (2%)	55	81
1	D	248/284 (87%)	246 (99%)	2 (1%)	81	93
All	All	998/1136 (88%)	988 (99%)	10 (1%)	76	91

5 of 10 residues with a non-rotameric sidechain are listed below:

Mol	Chain	Res	Type
1	C	278	ASP
1	D	253	SER
1	D	399	ILE
1	C	222	THR
1	C	239	LYS

Sometimes sidechains can be flipped to improve hydrogen bonding and reduce clashes. 5 of 23 such sidechains are listed below:

Mol	Chain	Res	Type
1	C	305	ASN
1	D	175	ASN
1	D	166	HIS
1	D	178	ASN
1	B	305	ASN

### 5.3.3 RNA [i](#)

There are no RNA molecules in this entry.



## 5.4 Non-standard residues in protein, DNA, RNA chains [i](#)

12 non-standard protein/DNA/RNA residues are modelled in this entry.

In the following table, the Counts columns list the number of bonds (or angles) for which Mogul statistics could be retrieved, the number of bonds (or angles) that are observed in the model and the number of bonds (or angles) that are defined in the Chemical Component Dictionary. The Link column lists molecule types, if any, to which the group is linked. The Z score for a bond length (or angle) is the number of standard deviations the observed value is removed from the expected value. A bond length (or angle) with  $|Z| > 2$  is considered an outlier worth inspection. RMSZ is the root-mean-square of all Z scores of the bond lengths (or angles).

Mol	Type	Chain	Res	Link	Bond lengths			Bond angles		
					Counts	RMSZ	# Z  > 2	Counts	RMSZ	# Z  > 2
1	SEP	B	346	1	8,9,10	0.61	0	8,12,14	0.74	0
1	TPO	A	342	1	8,10,11	0.67	0	10,14,16	1.08	0
1	SEP	D	346	1	8,9,10	0.60	0	8,12,14	0.88	0
1	SEP	A	346	1	8,9,10	0.58	0	8,12,14	0.80	0
1	TPO	C	342	1	8,10,11	0.64	0	10,14,16	1.02	0
1	TPO	B	342	1	8,10,11	0.58	0	10,14,16	1.04	0
1	SEP	C	346	1	8,9,10	0.63	0	8,12,14	0.63	0
1	TPO	C	345	1	8,10,11	0.81	0	10,14,16	0.89	0
1	TPO	D	345	1	8,10,11	0.76	0	10,14,16	0.78	0
1	TPO	B	345	1	8,10,11	0.84	0	10,14,16	0.82	0
1	TPO	D	342	1	8,10,11	0.69	0	10,14,16	0.95	0
1	TPO	A	345	1	8,10,11	0.89	1 (12%)	10,14,16	0.89	0

In the following table, the Chirals column lists the number of chiral outliers, the number of chiral centers analysed, the number of these observed in the model and the number defined in the Chemical Component Dictionary. Similar counts are reported in the Torsion and Rings columns. '-' means no outliers of that kind were identified.

Mol	Type	Chain	Res	Link	Chirals	Torsions	Rings
1	SEP	B	346	1	-	3/5/8/10	-
1	TPO	A	342	1	-	3/9/11/13	-
1	SEP	D	346	1	-	3/5/8/10	-
1	SEP	A	346	1	-	3/5/8/10	-
1	TPO	C	342	1	-	3/9/11/13	-
1	TPO	B	342	1	-	3/9/11/13	-
1	SEP	C	346	1	-	3/5/8/10	-
1	TPO	C	345	1	-	3/9/11/13	-
1	TPO	D	345	1	-	3/9/11/13	-
1	TPO	B	345	1	-	3/9/11/13	-

*Continued on next page...*

*Continued from previous page...*

Mol	Type	Chain	Res	Link	Chirals	Torsions	Rings
1	TPO	D	342	1	-	3/9/11/13	-
1	TPO	A	345	1	-	4/9/11/13	-

All (1) bond length outliers are listed below:

Mol	Chain	Res	Type	Atoms	Z	Observed(Å)	Ideal(Å)
1	A	345	TPO	P-OG1	2.01	1.63	1.59

There are no bond angle outliers.

There are no chirality outliers.

5 of 37 torsion outliers are listed below:

Mol	Chain	Res	Type	Atoms
1	A	342	TPO	N-CA-CB-OG1
1	A	342	TPO	C-CA-CB-CG2
1	A	342	TPO	O-C-CA-CB
1	A	345	TPO	N-CA-CB-OG1
1	A	346	SEP	CB-OG-P-O2P

There are no ring outliers.

4 monomers are involved in 4 short contacts:

Mol	Chain	Res	Type	Clashes	Symm-Clashes
1	A	342	TPO	1	0
1	C	342	TPO	1	0
1	B	342	TPO	1	0
1	D	342	TPO	1	0

## 5.5 Carbohydrates [i](#)

There are no monosaccharides in this entry.

## 5.6 Ligand geometry [i](#)

Of 8 ligands modelled in this entry, 1 is monoatomic - leaving 7 for Mogul analysis.

In the following table, the Counts columns list the number of bonds (or angles) for which Mogul statistics could be retrieved, the number of bonds (or angles) that are observed in the model and the number of bonds (or angles) that are defined in the Chemical Component Dictionary. The

Link column lists molecule types, if any, to which the group is linked. The Z score for a bond length (or angle) is the number of standard deviations the observed value is removed from the expected value. A bond length (or angle) with  $|Z| > 2$  is considered an outlier worth inspection. RMSZ is the root-mean-square of all Z scores of the bond lengths (or angles).

Mol	Type	Chain	Res	Link	Bond lengths			Bond angles		
					Counts	RMSZ	# Z  > 2	Counts	RMSZ	# Z  > 2
3	GOL	A	503	-	5,5,5	0.14	0	5,5,5	0.40	0
3	GOL	A	502	-	5,5,5	0.14	0	5,5,5	0.30	0
2	Y9T	C	501	-	32,34,34	1.17	5 (15%)	45,53,53	1.96	14 (31%)
2	Y9T	B	501	-	32,34,34	1.51	4 (12%)	45,53,53	2.44	17 (37%)
4	SO4	A	504	-	4,4,4	0.36	0	6,6,6	0.05	0
2	Y9T	A	501	-	32,34,34	1.47	5 (15%)	45,53,53	1.90	12 (26%)
2	Y9T	D	501	-	32,34,34	1.11	3 (9%)	45,53,53	2.30	13 (28%)

In the following table, the Chirals column lists the number of chiral outliers, the number of chiral centers analysed, the number of these observed in the model and the number defined in the Chemical Component Dictionary. Similar counts are reported in the Torsion and Rings columns. '-' means no outliers of that kind were identified.

Mol	Type	Chain	Res	Link	Chirals	Torsions	Rings
3	GOL	A	503	-	-	2/4/4/4	-
3	GOL	A	502	-	-	0/4/4/4	-
2	Y9T	C	501	-	-	3/26/26/26	0/3/3/3
2	Y9T	B	501	-	-	2/26/26/26	0/3/3/3
2	Y9T	A	501	-	-	3/26/26/26	0/3/3/3
2	Y9T	D	501	-	-	2/26/26/26	0/3/3/3

The worst 5 of 17 bond length outliers are listed below:

Mol	Chain	Res	Type	Atoms	Z	Observed(Å)	Ideal(Å)
2	B	501	Y9T	C29-C15	-5.38	1.50	1.54
2	A	501	Y9T	C29-C15	-5.19	1.50	1.54
2	C	501	Y9T	C16-C17	-2.79	1.37	1.41
2	B	501	Y9T	F9-C7	2.61	1.42	1.32
2	D	501	Y9T	F9-C7	2.55	1.42	1.32

The worst 5 of 56 bond angle outliers are listed below:

Mol	Chain	Res	Type	Atoms	Z	Observed(°)	Ideal(°)
2	B	501	Y9T	C30-C29-C15	7.54	123.54	111.55
2	D	501	Y9T	C31-C29-C30	-6.19	102.92	110.49

*Continued on next page...*

*Continued from previous page...*

Mol	Chain	Res	Type	Atoms	Z	Observed(°)	Ideal(°)
2	B	501	Y9T	C15-C14-N13	-5.97	114.64	120.54
2	D	501	Y9T	C4-N3-C2	5.03	125.50	118.83
2	B	501	Y9T	C7-C2-N3	4.80	120.00	114.56

There are no chirality outliers.

5 of 12 torsion outliers are listed below:

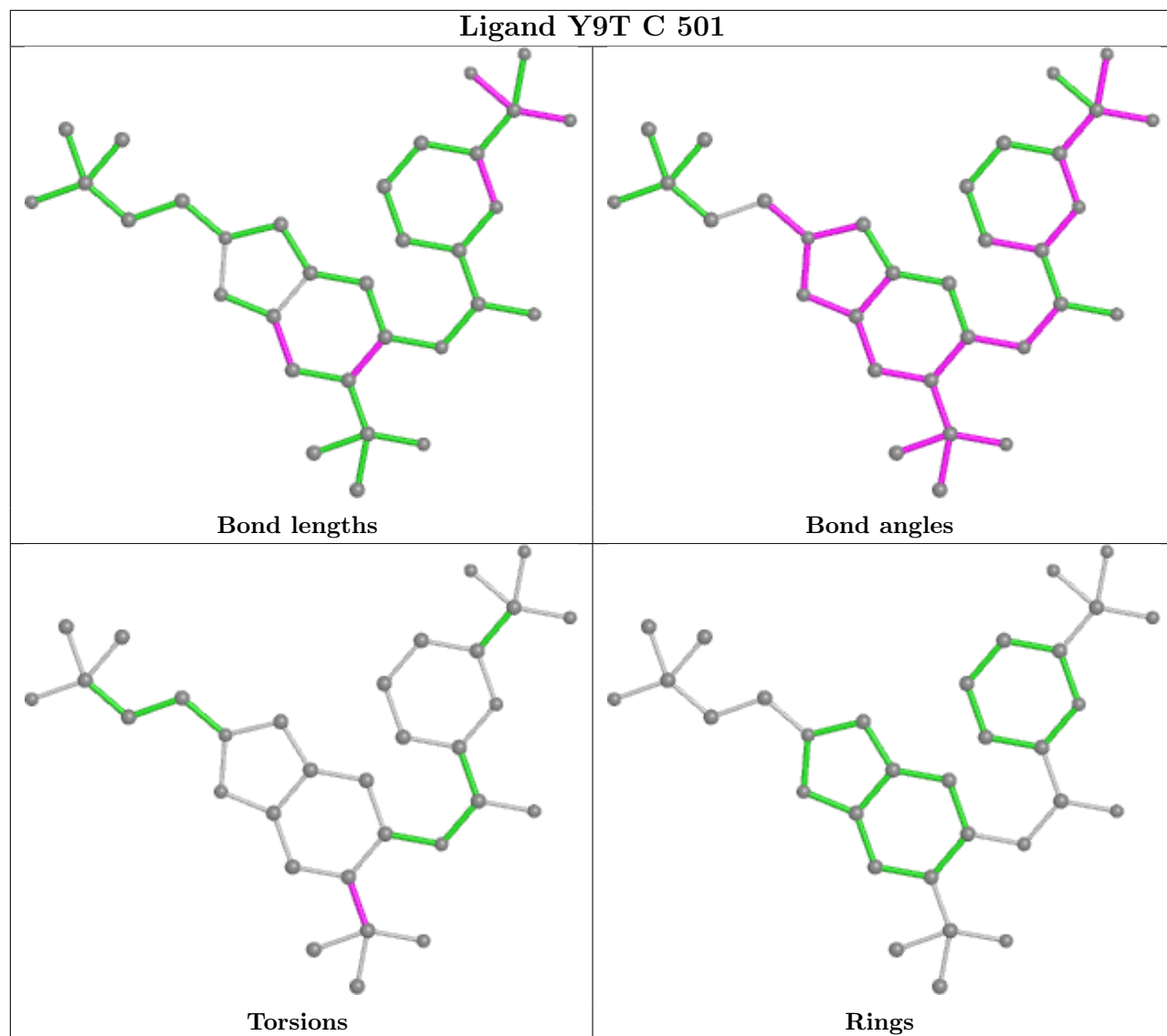
Mol	Chain	Res	Type	Atoms
2	C	501	Y9T	C14-C15-C29-C30
2	C	501	Y9T	C16-C15-C29-C30
2	D	501	Y9T	C14-C15-C29-C30
2	D	501	Y9T	C16-C15-C29-C30
3	A	503	GOL	O1-C1-C2-C3

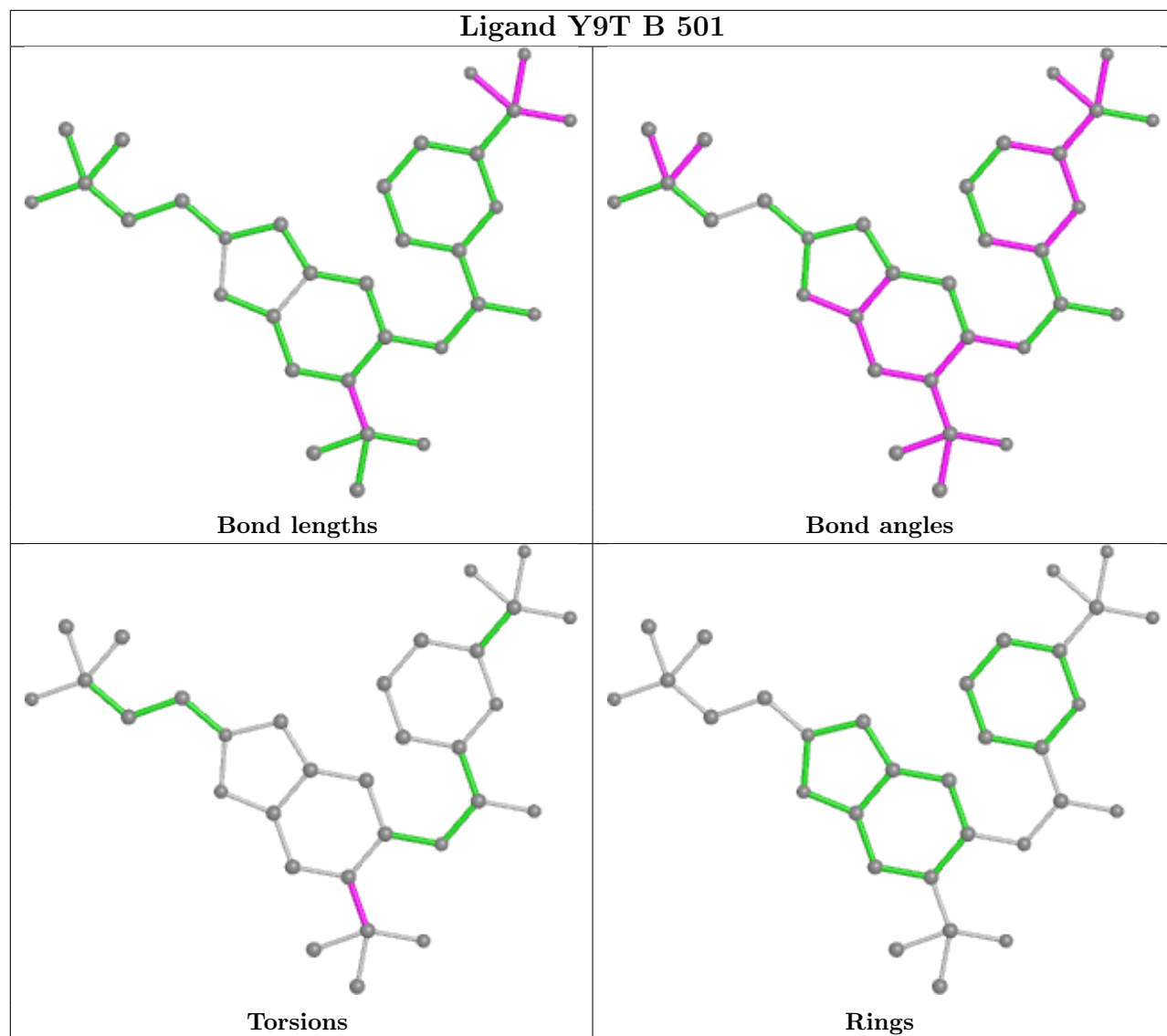
There are no ring outliers.

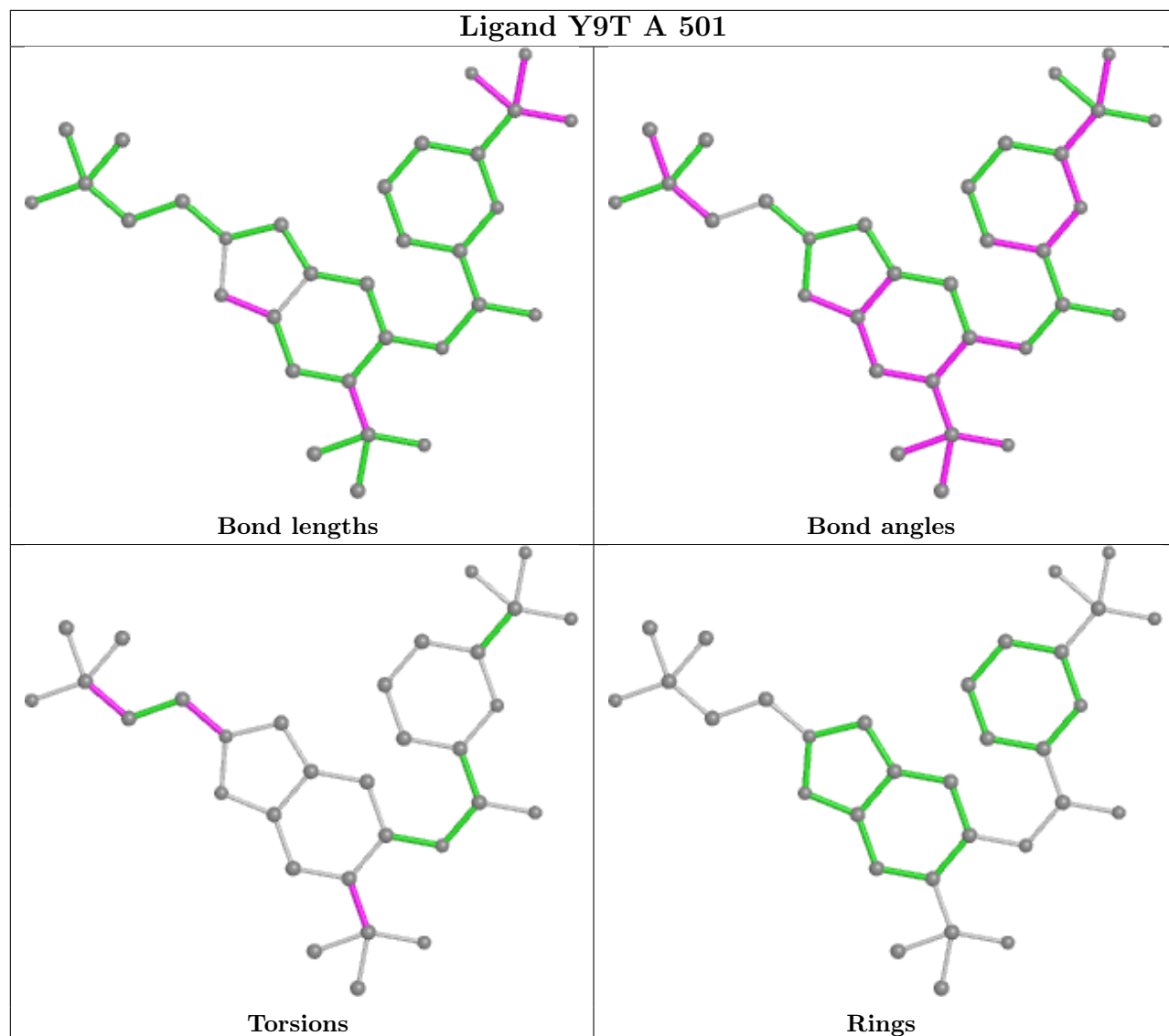
5 monomers are involved in 7 short contacts:

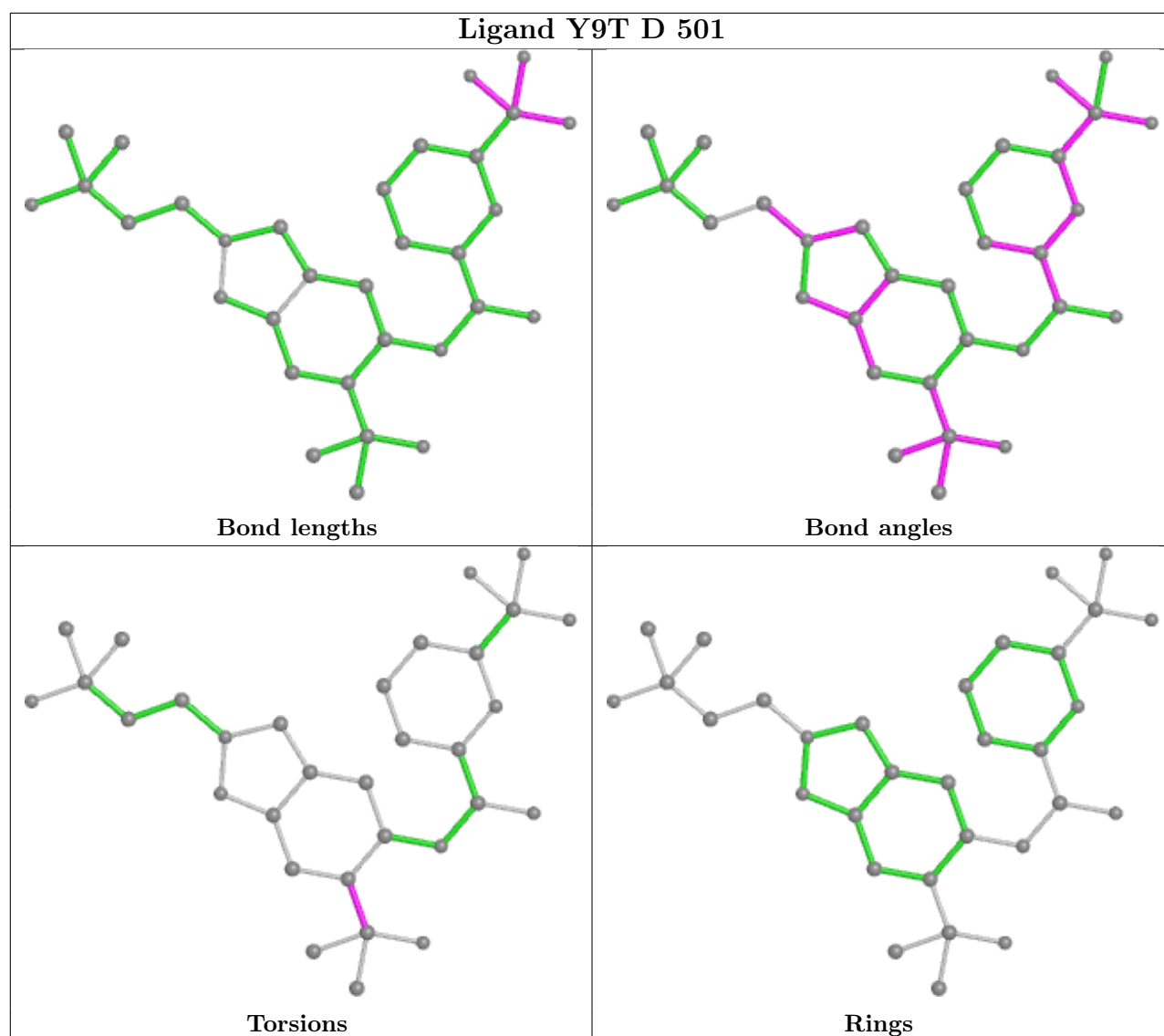
Mol	Chain	Res	Type	Clashes	Symm-Clashes
3	A	503	GOL	1	0
2	C	501	Y9T	1	0
2	B	501	Y9T	2	0
2	A	501	Y9T	2	0
2	D	501	Y9T	1	0

The following is a two-dimensional graphical depiction of Mogul quality analysis of bond lengths, bond angles, torsion angles, and ring geometry for all instances of the Ligand of Interest. In addition, ligands with molecular weight > 250 and outliers as shown on the validation Tables will also be included. For torsion angles, if less than 5% of the Mogul distribution of torsion angles is within 10 degrees of the torsion angle in question, then that torsion angle is considered an outlier. Any bond that is central to one or more torsion angles identified as an outlier by Mogul will be highlighted in the graph. For rings, the root-mean-square deviation (RMSD) between the ring in question and similar rings identified by Mogul is calculated over all ring torsion angles. If the average RMSD is greater than 60 degrees and the minimal RMSD between the ring in question and any Mogul-identified rings is also greater than 60 degrees, then that ring is considered an outlier. The outliers are highlighted in purple. The color gray indicates Mogul did not find sufficient equivalents in the CSD to analyse the geometry.









## 5.7 Other polymers [i](#)

There are no such residues in this entry.

## 5.8 Polymer linkage issues [i](#)

There are no chain breaks in this entry.



## 6 Fit of model and data [i](#)

### 6.1 Protein, DNA and RNA chains [i](#)

In the following table, the column labelled ‘#RSRZ > 2’ contains the number (and percentage) of RSRZ outliers, followed by percent RSRZ outliers for the chain as percentile scores relative to all X-ray entries and entries of similar resolution. The OWAB column contains the minimum, median, 95<sup>th</sup> percentile and maximum values of the occupancy-weighted average B-factor per residue. The column labelled ‘Q < 0.9’ lists the number of (and percentage) of residues with an average occupancy less than 0.9.

Mol	Chain	Analysed	<RSRZ>	#RSRZ>2	OWAB(Å <sup>2</sup> )	Q<0.9
1	A	287/327 (87%)	0.37	18 (6%) 20 17	36, 60, 102, 117	0
1	B	286/327 (87%)	0.44	23 (8%) 12 10	38, 62, 108, 137	0
1	C	289/327 (88%)	0.27	16 (5%) 25 22	32, 57, 97, 153	0
1	D	285/327 (87%)	0.45	22 (7%) 13 11	36, 64, 113, 153	0
All	All	1147/1308 (87%)	0.38	79 (6%) 16 13	32, 61, 107, 153	0

The worst 5 of 79 RSRZ outliers are listed below:

Mol	Chain	Res	Type	RSRZ
1	B	197	PHE	6.7
1	D	221	ILE	5.0
1	B	216	ALA	4.8
1	A	197	PHE	4.7
1	C	340	ALA	4.1

### 6.2 Non-standard residues in protein, DNA, RNA chains [i](#)

In the following table, the Atoms column lists the number of modelled atoms in the group and the number defined in the chemical component dictionary. The B-factors column lists the minimum, median, 95<sup>th</sup> percentile and maximum values of B factors of atoms in the group. The column labelled ‘Q < 0.9’ lists the number of atoms with occupancy less than 0.9.

Mol	Type	Chain	Res	Atoms	RSCC	RSR	B-factors(Å <sup>2</sup> )	Q<0.9
1	SEP	C	346	10/11	0.81	0.18	81,107,128,131	0
1	SEP	B	346	10/11	0.83	0.17	70,87,110,117	0
1	TPO	D	342	11/12	0.85	0.18	78,83,115,116	0
1	SEP	D	346	10/11	0.85	0.12	82,98,105,110	0
1	SEP	A	346	10/11	0.87	0.17	75,93,105,108	0
1	TPO	B	342	11/12	0.91	0.15	68,87,97,98	0
1	TPO	C	342	11/12	0.92	0.14	71,84,91,96	0

*Continued on next page...*

Continued from previous page...

Mol	Type	Chain	Res	Atoms	RSCC	RSR	B-factors(Å <sup>2</sup> )	Q<0.9
1	TPO	A	342	11/12	0.92	0.12	76,88,96,97	0
1	TPO	A	345	11/12	0.95	0.11	60,70,75,85	0
1	TPO	B	345	11/12	0.95	0.08	55,65,75,77	0
1	TPO	D	345	11/12	0.95	0.11	63,81,97,107	0
1	TPO	C	345	11/12	0.95	0.12	63,80,95,112	0

### 6.3 Carbohydrates [i](#)

There are no monosaccharides in this entry.

### 6.4 Ligands [i](#)

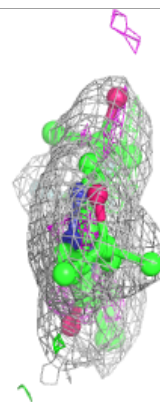
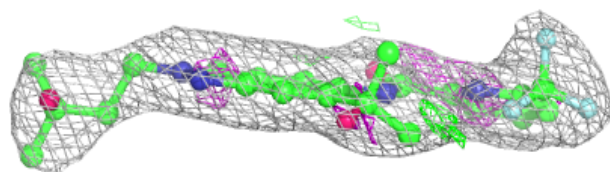
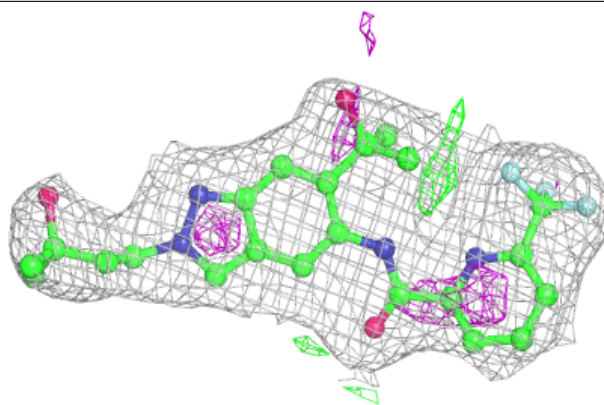
In the following table, the Atoms column lists the number of modelled atoms in the group and the number defined in the chemical component dictionary. The B-factors column lists the minimum, median, 95<sup>th</sup> percentile and maximum values of B factors of atoms in the group. The column labelled 'Q< 0.9' lists the number of atoms with occupancy less than 0.9.

Mol	Type	Chain	Res	Atoms	RSCC	RSR	B-factors(Å <sup>2</sup> )	Q<0.9
3	GOL	A	503	6/6	0.73	0.43	54,61,64,66	0
3	GOL	A	502	6/6	0.89	0.23	66,71,74,76	0
4	SO4	A	504	5/5	0.93	0.14	121,121,122,125	5
5	CL	D	502	1/1	0.93	0.25	74,74,74,74	0
2	Y9T	D	501	32/32	0.94	0.17	36,44,55,57	0
2	Y9T	B	501	32/32	0.95	0.19	31,41,64,65	0
2	Y9T	A	501	32/32	0.95	0.15	40,44,53,57	0
2	Y9T	C	501	32/32	0.96	0.15	39,45,49,61	0

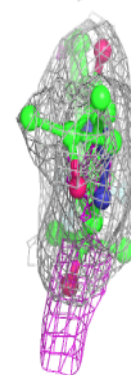
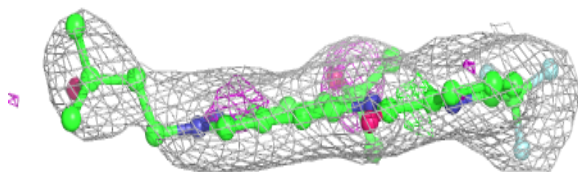
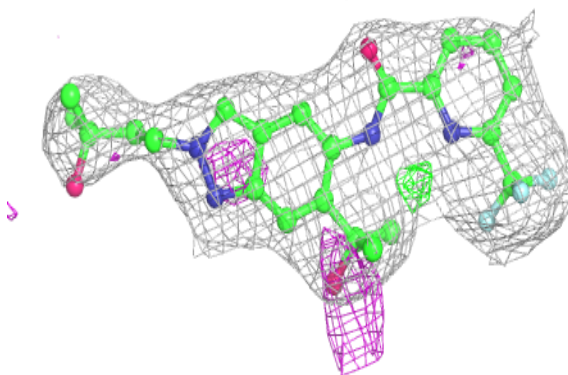
The following is a graphical depiction of the model fit to experimental electron density of all instances of the Ligand of Interest. In addition, ligands with molecular weight > 250 and outliers as shown on the geometry validation Tables will also be included. Each fit is shown from different orientation to approximate a three-dimensional view.

**Electron density around Y9T D 501:**

$2mF_o-DF_c$  (at 0.7 rmsd) in gray  
 $mF_o-DF_c$  (at 3 rmsd) in purple (negative)  
and green (positive)

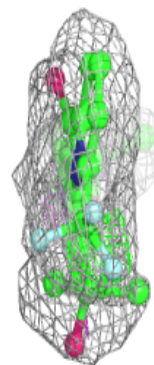
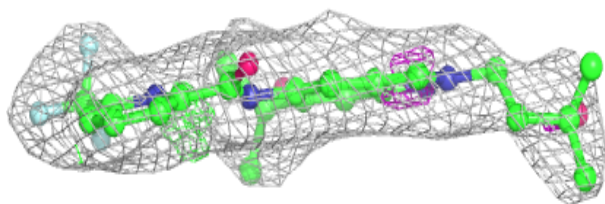
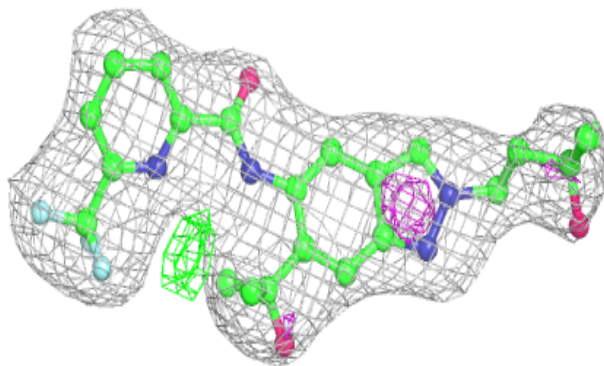
**Electron density around Y9T B 501:**

$2mF_o-DF_c$  (at 0.7 rmsd) in gray  
 $mF_o-DF_c$  (at 3 rmsd) in purple (negative)  
and green (positive)

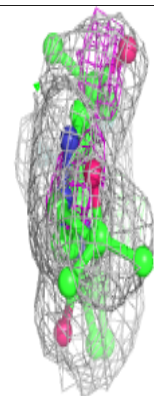
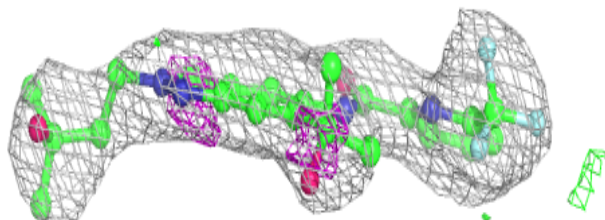
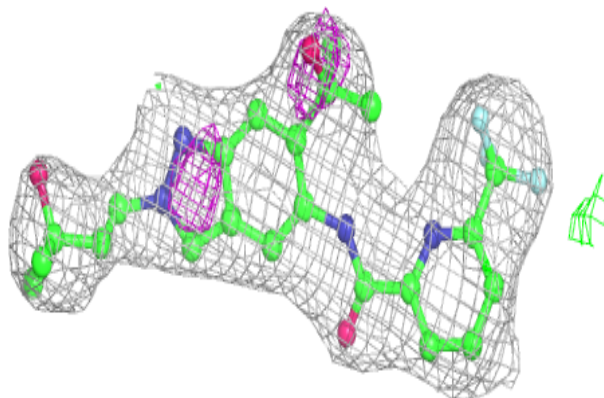


**Electron density around Y9T A 501:**

$2mF_o-DF_c$  (at 0.7 rmsd) in gray  
 $mF_o-DF_c$  (at 3 rmsd) in purple (negative)  
and green (positive)

**Electron density around Y9T C 501:**

$2mF_o-DF_c$  (at 0.7 rmsd) in gray  
 $mF_o-DF_c$  (at 3 rmsd) in purple (negative)  
and green (positive)



## 6.5 Other polymers [i](#)

There are no such residues in this entry.