



# Full wwPDB X-ray Structure Validation Report ⓘ

May 21, 2020 – 08:06 pm BST

PDB ID : 4V3V  
Title : Structure of rat neuronal nitric oxide synthase heme domain in complex with N-(2-(1H-imidazol-1-yl)-4-pyrimidylmethyl)-3-(3-fluorophenyl)propan-1-amine  
Authors : Li, H.; Poulos, T.L.  
Deposited on : 2014-10-20  
Resolution : 2.06 Å(reported)

This is a Full wwPDB X-ray Structure Validation Report for a publicly released PDB entry.

We welcome your comments at [validation@mail.wwpdb.org](mailto:validation@mail.wwpdb.org)

A user guide is available at

<https://www.wwpdb.org/validation/2017/XrayValidationReportHelp>

with specific help available everywhere you see the ⓘ symbol.

---

The following versions of software and data (see [references ⓘ](#)) were used in the production of this report:

MolProbity : 4.02b-467  
Mogul : 1.8.5 (274361), CSD as541be (2020)  
Xtriage (Phenix) : 1.13  
EDS : 2.11  
buster-report : 1.1.7 (2018)  
Percentile statistics : 20191225.v01 (using entries in the PDB archive December 25th 2019)  
Refmac : 5.8.0158  
CCP4 : 7.0.044 (Gargrove)  
Ideal geometry (proteins) : Engh & Huber (2001)  
Ideal geometry (DNA, RNA) : Parkinson et al. (1996)  
Validation Pipeline (wwPDB-VP) : 2.11

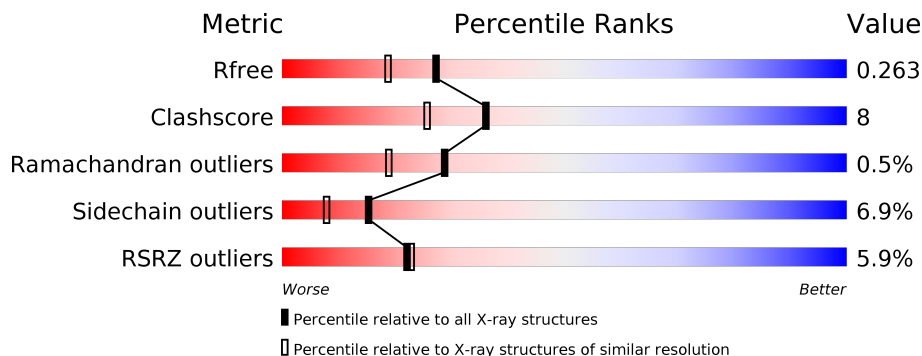
# 1 Overall quality at a glance

The following experimental techniques were used to determine the structure:

*X-RAY DIFFRACTION*

The reported resolution of this entry is 2.06 Å.

Percentile scores (ranging between 0-100) for global validation metrics of the entry are shown in the following graphic. The table shows the number of entries on which the scores are based.



Metric	Whole archive (#Entries)	Similar resolution (#Entries, resolution range(Å))
$R_{free}$	130704	2684 (2.08-2.04)
Clashscore	141614	2801 (2.08-2.04)
Ramachandran outliers	138981	2768 (2.08-2.04)
Sidechain outliers	138945	2768 (2.08-2.04)
RSRZ outliers	127900	2646 (2.08-2.04)

The table below summarises the geometric issues observed across the polymeric chains and their fit to the electron density. The red, orange, yellow and green segments on the lower bar indicate the fraction of residues that contain outliers for  $\geq 3$ , 2, 1 and 0 types of geometric quality criteria respectively. A grey segment represents the fraction of residues that are not modelled. The numeric value for each fraction is indicated below the corresponding segment, with a dot representing fractions  $\leq 5\%$ . The upper red bar (where present) indicates the fraction of residues that have poor fit to the electron density. The numeric value is given above the bar.

Mol	Chain	Length	Quality of chain
1	A	422	
1	B	422	

The following table lists non-polymeric compounds, carbohydrate monomers and non-standard residues in protein, DNA, RNA chains that are outliers for geometric or electron-density-fit criteria:

Mol	Type	Chain	Res	Chirality	Geometry	Clashes	Electron density
5	ACT	A	860	-	-	X	-

## 2 Entry composition i

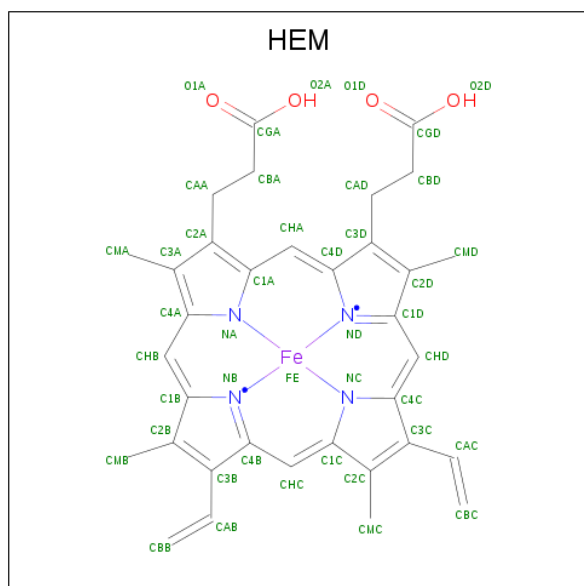
There are 7 unique types of molecules in this entry. The entry contains 7025 atoms, of which 0 are hydrogens and 0 are deuteriums.

In the tables below, the ZeroOcc column contains the number of atoms modelled with zero occupancy, the AltConf column contains the number of residues with at least one atom in alternate conformation and the Trace column contains the number of residues modelled with at most 2 atoms.

- Molecule 1 is a protein called NITRIC OXIDE SYNTHASE, BRAIN.

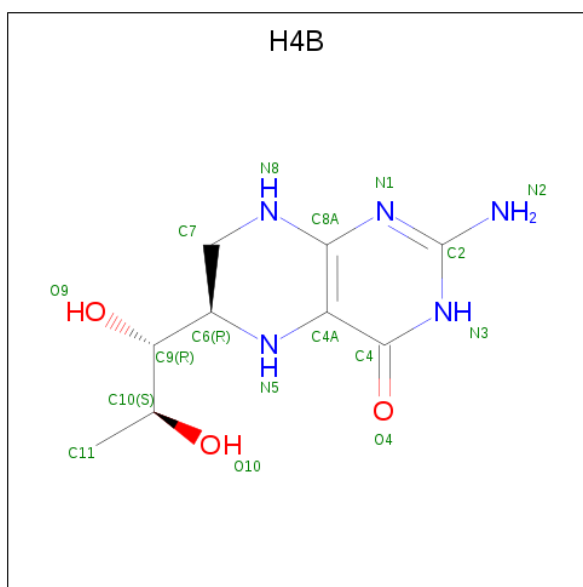
Mol	Chain	Residues	Atoms					ZeroOcc	AltConf	Trace
			Total	C	N	O	S			
1	A	408	Total	C	N	O	S	0	0	1
			3314	2121	567	605	21			
1	B	411	Total	C	N	O	S	0	2	0
			3354	2146	574	612	22			

- Molecule 2 is PROTOPORPHYRIN IX CONTAINING FE (three-letter code: HEM) (formula:  $C_{34}H_{32}FeN_4O_4$ ).



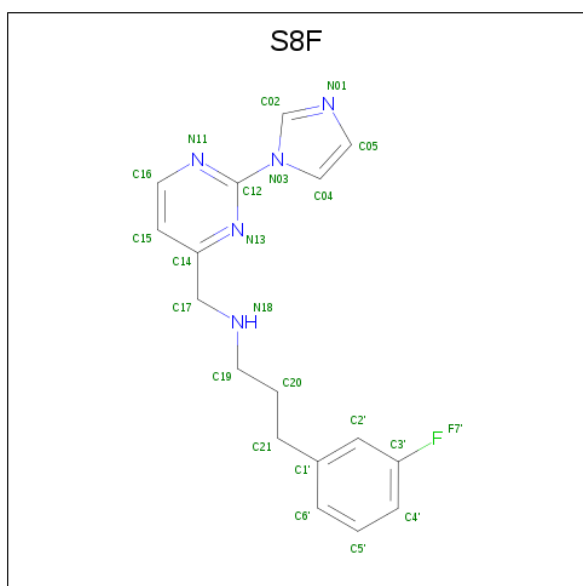
Mol	Chain	Residues	Atoms					ZeroOcc	AltConf
			Total	C	Fe	N	O		
2	A	1	Total	C	Fe	N	O	0	0
			43	34	1	4	4		
2	B	1	Total	C	Fe	N	O	0	0
			43	34	1	4	4		

- Molecule 3 is 5,6,7,8-TETRAHYDROBIOPTERIN (three-letter code: H4B) (formula:  $C_9H_{15}N_5O_3$ ).



Mol	Chain	Residues	Atoms				ZeroOcc	AltConf
			Total	C	N	O		
3	A	1	17	9	5	3	0	0
3	B	1	17	9	5	3	0	0

- Molecule 4 is 3-(3-fluorophenyl)-N-{{2-(1H-imidazol-1-yl)pyrimidin-4-yl}methyl}propan-1-amine (three-letter code: S8F) (formula: C<sub>17</sub>H<sub>18</sub>FN<sub>5</sub>).



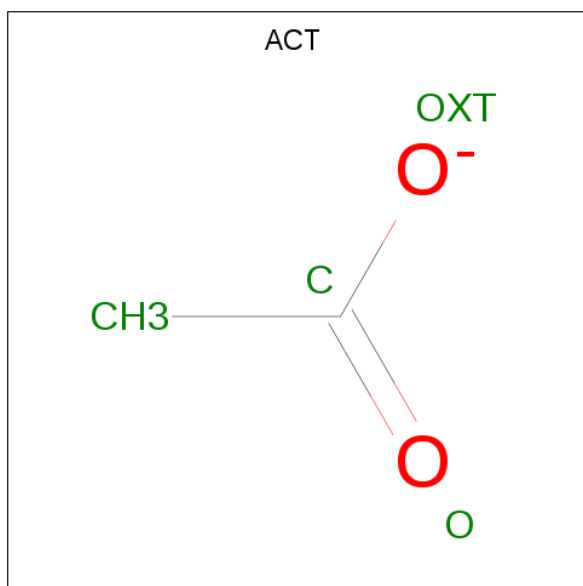
Mol	Chain	Residues	Atoms				ZeroOcc	AltConf
			Total	C	F	N		
4	A	1	23	17	1	5	0	0

*Continued on next page...*

Continued from previous page...

Mol	Chain	Residues	Atoms				ZeroOcc	AltConf
			Total	C	F	N		
4	B	1	23	17	1	5	0	0

- Molecule 5 is ACETATE ION (three-letter code: ACT) (formula: C<sub>2</sub>H<sub>3</sub>O<sub>2</sub>).



Mol	Chain	Residues	Atoms			ZeroOcc	AltConf
			Total	C	O		
5	A	1	4	2	2	0	0
5	B	1	4	2	2	0	0

- Molecule 6 is ZINC ION (three-letter code: ZN) (formula: Zn).

Mol	Chain	Residues	Atoms		ZeroOcc	AltConf
			Total	Zn		
6	A	1	1	1	0	0

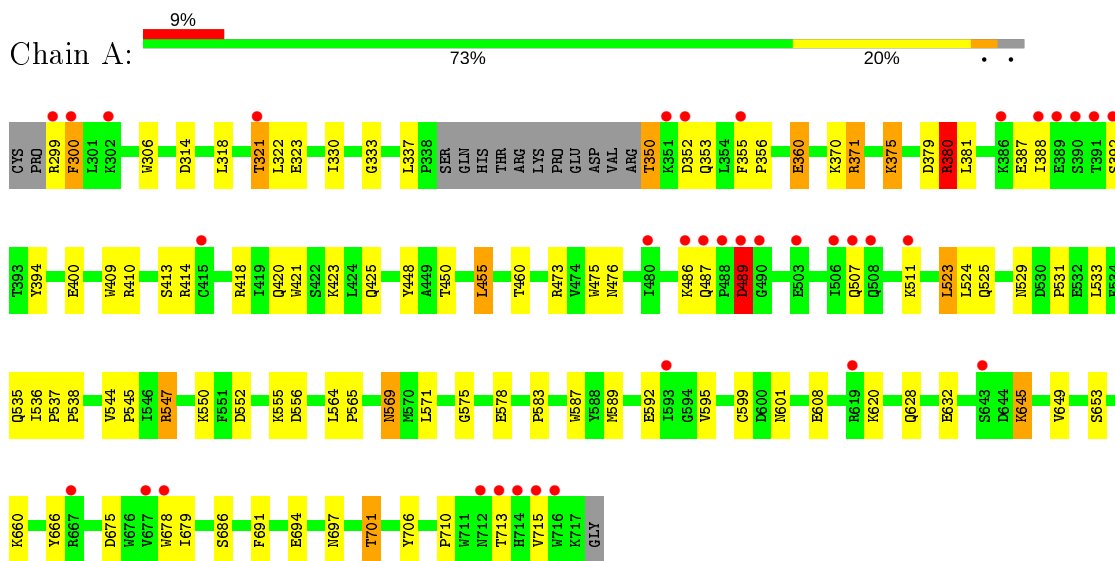
- Molecule 7 is water.

Mol	Chain	Residues	Atoms		ZeroOcc	AltConf
			Total	O		
7	A	88	88	88	0	0
7	B	94	94	94	0	0

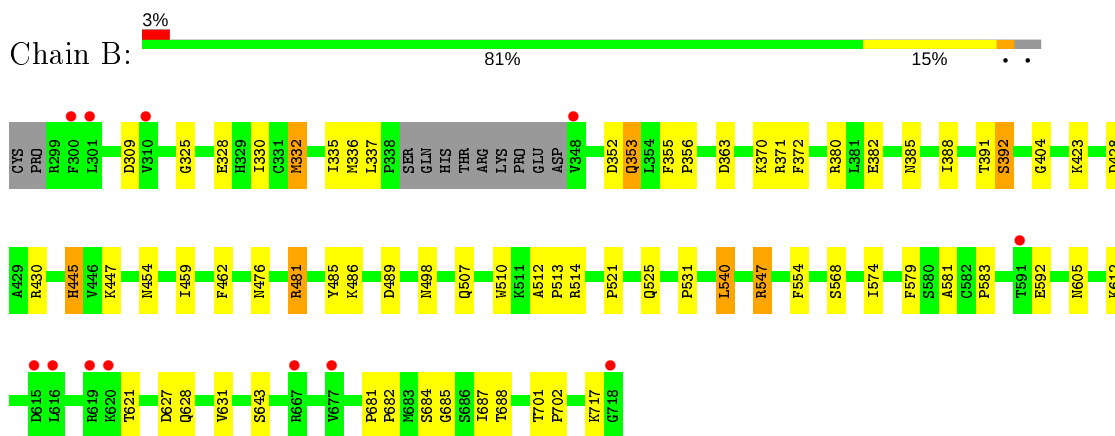
### 3 Residue-property plots [i](#)

These plots are drawn for all protein, RNA and DNA chains in the entry. The first graphic for a chain summarises the proportions of the various outlier classes displayed in the second graphic. The second graphic shows the sequence view annotated by issues in geometry and electron density. Residues are color-coded according to the number of geometric quality criteria for which they contain at least one outlier: green = 0, yellow = 1, orange = 2 and red = 3 or more. A red dot above a residue indicates a poor fit to the electron density ( $RSRZ > 2$ ). Stretches of 2 or more consecutive residues without any outlier are shown as a green connector. Residues present in the sample, but not in the model, are shown in grey.

- Molecule 1: NITRIC OXIDE SYNTHASE, BRAIN



- Molecule 1: NITRIC OXIDE SYNTHASE, BRAIN



## 4 Data and refinement statistics

Property	Value	Source
Space group	P 21 21 21	Depositor
Cell constants a, b, c, $\alpha$ , $\beta$ , $\gamma$	51.75Å 110.70Å 164.38Å 90.00° 90.00° 90.00°	Depositor
Resolution (Å)	91.99 – 2.06 38.94 – 2.06	Depositor EDS
% Data completeness (in resolution range)	98.5 (91.99-2.06) 98.6 (38.94-2.06)	Depositor EDS
$R_{merge}$	0.11	Depositor
$R_{sym}$	(Not available)	Depositor
$\langle I/\sigma(I) \rangle$ <sup>1</sup>	1.74 (at 2.06Å)	Xtrriage
Refinement program	REFMAC 5.8.0049	Depositor
R, $R_{free}$	0.207 , 0.263 0.207 , 0.263	Depositor DCC
$R_{free}$ test set	2870 reflections (4.94%)	wwPDB-VP
Wilson B-factor (Å <sup>2</sup> )	36.1	Xtrriage
Anisotropy	0.694	Xtrriage
Bulk solvent $k_{sol}$ (e/Å <sup>3</sup> ), $B_{sol}$ (Å <sup>2</sup> )	0.37 , 45.0	EDS
L-test for twinning <sup>2</sup>	$\langle  L  \rangle = 0.48$ , $\langle L^2 \rangle = 0.32$	Xtrriage
Estimated twinning fraction	No twinning to report.	Xtrriage
$F_o, F_c$ correlation	0.96	EDS
Total number of atoms	7025	wwPDB-VP
Average B, all atoms (Å <sup>2</sup> )	49.0	wwPDB-VP

Xtrriage's analysis on translational NCS is as follows: *The largest off-origin peak in the Patterson function is 5.47% of the height of the origin peak. No significant pseudotranslation is detected.*

<sup>1</sup>Intensities estimated from amplitudes.

<sup>2</sup>Theoretical values of  $\langle |L| \rangle$ ,  $\langle L^2 \rangle$  for acentric reflections are 0.5, 0.333 respectively for untwinned datasets, and 0.375, 0.2 for perfectly twinned datasets.



## 5 Model quality [i](#)

### 5.1 Standard geometry [i](#)

Bond lengths and bond angles in the following residue types are not validated in this section: HEM, ZN, H4B, S8F, ACT

The Z score for a bond length (or angle) is the number of standard deviations the observed value is removed from the expected value. A bond length (or angle) with  $|Z| > 5$  is considered an outlier worth inspection. RMSZ is the root-mean-square of all Z scores of the bond lengths (or angles).

Mol	Chain	Bond lengths		Bond angles	
		RMSZ	# $ Z  > 5$	RMSZ	# $ Z  > 5$
1	A	0.82	2/3407 (0.1%)	0.93	5/4623 (0.1%)
1	B	0.86	2/3453 (0.1%)	0.90	2/4681 (0.0%)
All	All	0.84	4/6860 (0.1%)	0.91	7/9304 (0.1%)

All (4) bond length outliers are listed below:

Mol	Chain	Res	Type	Atoms	Z	Observed(Å)	Ideal(Å)
1	A	592	GLU	CG-CD	8.20	1.64	1.51
1	B	592	GLU	CG-CD	5.84	1.60	1.51
1	A	360	GLU	CD-OE1	5.36	1.31	1.25
1	B	579	PHE	CG-CD1	5.13	1.46	1.38

All (7) bond angle outliers are listed below:

Mol	Chain	Res	Type	Atoms	Z	Observed(°)	Ideal(°)
1	A	455	LEU	CA-CB-CG	6.34	129.89	115.30
1	A	592	GLU	OE1-CD-OE2	-5.61	116.57	123.30
1	A	380	ARG	NE-CZ-NH2	-5.60	117.50	120.30
1	B	380	ARG	NE-CZ-NH2	-5.58	117.51	120.30
1	A	410	ARG	NE-CZ-NH1	5.46	123.03	120.30
1	A	547	ARG	NE-CZ-NH2	-5.29	117.65	120.30
1	B	489	ASP	CB-CG-OD1	5.13	122.92	118.30

There are no chirality outliers.

There are no planarity outliers.

## 5.2 Too-close contacts [i](#)

In the following table, the Non-H and H(model) columns list the number of non-hydrogen atoms and hydrogen atoms in the chain respectively. The H(added) column lists the number of hydrogen atoms added and optimized by MolProbity. The Clashes column lists the number of clashes within the asymmetric unit, whereas Symm-Clashes lists symmetry related clashes.

Mol	Chain	Non-H	H(model)	H(added)	Clashes	Symm-Clashes
1	A	3314	0	3221	68	0
1	B	3354	0	3270	37	0
2	A	43	0	30	5	0
2	B	43	0	30	6	0
3	A	17	0	15	0	0
3	B	17	0	15	0	0
4	A	23	0	18	3	0
4	B	23	0	18	2	0
5	A	4	0	3	2	0
5	B	4	0	3	1	0
6	A	1	0	0	0	0
7	A	88	0	0	1	0
7	B	94	0	0	2	0
All	All	7025	0	6623	108	0

The all-atom clashscore is defined as the number of clashes found per 1000 atoms (including hydrogen atoms). The all-atom clashscore for this structure is 8.

All (108) close contacts within the same asymmetric unit are listed below, sorted by their clash magnitude.

Atom-1	Atom-2	Interatomic distance (Å)	Clash overlap (Å)
2:B:750:HEM:O2A	4:B:800:S8F:H17A	1.67	0.95
1:A:350:THR:HB	1:A:353:GLN:NE2	1.89	0.86
1:A:371:ARG:HG2	1:A:371:ARG:HH11	1.39	0.85
1:A:523:LEU:HD22	1:A:531:PRO:HB2	1.59	0.84
1:A:371:ARG:HG2	1:A:371:ARG:NH1	1.95	0.81
1:A:706:TYR:OH	2:A:750:HEM:O2D	2.05	0.73
1:A:375:LYS:HD3	1:A:379:ASP:OD2	1.89	0.72
1:A:371:ARG:CG	1:A:371:ARG:HH11	2.01	0.72
1:A:350:THR:HG22	1:A:353:GLN:H	1.54	0.72
1:B:447:LYS:HD2	1:B:540:LEU:HD11	1.71	0.71
2:A:750:HEM:HMB3	5:A:860:ACT:H3	1.73	0.71
1:A:350:THR:N	1:A:353:GLN:NE2	2.42	0.68
1:A:571:LEU:HD21	1:A:578:GLU:HB3	1.76	0.66
1:A:675:ASP:O	1:A:679:ILE:HG12	1.97	0.65

*Continued on next page...*

*Continued from previous page...*

Atom-1	Atom-2	Interatomic distance (Å)	Clash overlap (Å)
1:B:388:ILE:O	1:B:392:SER:N	2.28	0.65
1:A:350:THR:HB	1:A:353:GLN:CD	2.20	0.62
1:A:350:THR:HG22	1:A:353:GLN:HG3	1.80	0.62
1:A:380:ARG:HD3	1:A:400:GLU:OE2	2.00	0.62
1:A:628:GLN:HG3	1:B:631:VAL:HG11	1.81	0.60
1:A:524:LEU:O	1:A:531:PRO:HA	2.01	0.60
2:B:750:HEM:HBC2	2:B:750:HEM:CMC	2.33	0.59
2:A:750:HEM:O2A	4:A:800:S8F:H17A	2.02	0.59
1:A:371:ARG:CG	1:A:371:ARG:NH1	2.65	0.59
1:A:350:THR:CG2	1:A:353:GLN:HG3	2.33	0.58
1:B:485:TYR:CZ	1:B:514:ARG:HA	2.39	0.58
1:B:391:THR:O	1:B:392:SER:CB	2.52	0.57
1:A:350:THR:N	1:A:353:GLN:HE21	2.03	0.57
1:A:525:GLN:HG3	1:A:529:ASN:O	2.06	0.56
1:B:325:GLY:O	1:B:332:MET:HG3	2.06	0.56
1:B:353:GLN:O	1:B:356:PRO:HG2	2.06	0.55
1:A:460:THR:O	1:A:583:PRO:HD2	2.06	0.55
1:A:632:GLU:OE2	1:B:628:GLN:NE2	2.40	0.54
1:A:450:THR:HA	1:A:455:LEU:HD22	1.90	0.53
2:A:750:HEM:HMC1	2:A:750:HEM:HBC2	1.90	0.53
1:B:554:PHE:HB3	7:B:2063:HOH:O	2.08	0.53
1:B:404:GLY:HA3	1:B:574:ILE:HD13	1.89	0.53
1:A:352:ASP:O	1:A:356:PRO:HD2	2.09	0.52
1:A:686:SER:HA	1:A:691:PHE:CG	2.45	0.52
2:A:750:HEM:CMC	2:A:750:HEM:HBC2	2.40	0.52
1:A:678:TRP:HH2	4:A:800:S8F:H21A	1.75	0.52
1:A:455:LEU:HD13	1:A:564:LEU:HD12	1.93	0.51
1:A:414:ARG:HD3	1:A:678:TRP:CD2	2.48	0.49
1:A:694:GLU:HB3	1:B:335:ILE:HD13	1.94	0.49
1:A:299:ARG:HG3	1:A:318:LEU:HD11	1.94	0.48
1:A:299:ARG:O	1:A:318:LEU:HD11	2.14	0.48
1:A:306:TRP:CD1	1:B:336:MET:HE2	2.48	0.48
1:A:601:ASN:HB2	7:A:2071:HOH:O	2.14	0.47
1:B:459:ILE:HG13	1:B:583:PRO:O	2.13	0.47
1:A:536:ILE:O	1:A:538:PRO:HD3	2.15	0.47
1:A:535:GLN:HE21	1:A:536:ILE:H	1.61	0.47
1:A:595:VAL:O	1:A:599:CYS:HB2	2.15	0.47
1:A:321:THR:HG21	1:A:701:THR:HG22	1.97	0.47
1:B:391:THR:O	1:B:392:SER:HB2	2.15	0.47
1:A:425:GLN:HG2	1:A:448:TYR:CE2	2.50	0.47
1:A:555:LYS:HG3	1:A:556:ASP:N	2.29	0.46

*Continued on next page...*

*Continued from previous page...*

Atom-1	Atom-2	Interatomic distance (Å)	Clash overlap (Å)
1:A:686:SER:OG	1:B:682:PRO:HB2	2.15	0.46
1:A:569:ASN:H	1:A:569:ASN:HD22	1.63	0.46
1:B:363:ASP:HB3	1:B:372:PHE:HE2	1.80	0.46
1:A:330:ILE:HG23	1:A:330:ILE:O	2.15	0.46
1:B:355:PHE:CE2	1:B:385:ASN:HB2	2.50	0.46
1:A:318:LEU:HD23	1:A:318:LEU:HA	1.65	0.46
1:B:525:GLN:HB2	1:B:531:PRO:HB3	1.98	0.46
1:A:387:GLU:OE2	1:A:394:TYR:HA	2.15	0.46
1:A:569:ASN:H	1:A:569:ASN:ND2	2.14	0.46
1:A:473:ARG:NH2	1:A:710:PRO:HD3	2.31	0.46
1:A:355:PHE:HD1	1:A:388:ILE:HD12	1.81	0.46
1:A:314:ASP:HB2	1:A:666:TYR:HE2	1.81	0.45
1:B:684:SER:HB3	1:B:687:ILE:CG1	2.46	0.45
1:A:388:ILE:O	1:A:392:SER:HA	2.17	0.44
1:A:544:VAL:HA	1:A:545:PRO:HD2	1.82	0.44
1:B:476:ASN:O	1:B:568:SER:OG	2.30	0.44
1:A:413:SER:CB	1:A:697:ASN:HD21	2.30	0.44
1:B:370:LYS:O	1:B:371:ARG:HD3	2.17	0.44
1:A:645:LYS:HA	1:A:645:LYS:HD3	1.45	0.44
1:A:306:TRP:CD2	1:B:336:MET:HE3	2.52	0.44
1:A:536:ILE:O	1:A:537:PRO:C	2.55	0.44
1:B:353:GLN:HG2	1:B:353:GLN:H	1.38	0.44
2:B:750:HEM:HBC2	2:B:750:HEM:HMC1	1.97	0.44
1:B:445:HIS:C	1:B:445:HIS:CD2	2.92	0.43
1:B:462:PHE:HB2	1:B:581:ALA:HB3	2.00	0.43
1:B:547:ARG:H	1:B:547:ARG:HD3	1.83	0.43
1:A:565:PRO:HB2	4:A:800:S8F:H04	1.99	0.43
1:A:487:GLN:CB	1:A:489:ASP:OD1	2.66	0.43
1:A:350:THR:CB	1:A:353:GLN:NE2	2.74	0.42
1:B:510:TRP:CE2	1:B:521:PRO:HD3	2.54	0.42
1:A:409:TRP:CE3	1:A:421:TRP:HA	2.54	0.42
1:B:681:PRO:HG2	1:B:688:THR:HG21	2.02	0.42
1:A:550:LYS:HD3	1:A:550:LYS:HA	1.89	0.42
2:B:750:HEM:HMB3	5:B:860:ACT:H2	2.02	0.41
1:A:300:PHE:N	1:A:300:PHE:CD1	2.89	0.41
1:A:475:TRP:HB2	1:A:523:LEU:HB3	2.02	0.41
1:B:481:ARG:HD3	1:B:498:ASN:HD21	1.85	0.41
1:A:487:GLN:HB2	1:A:489:ASP:OD1	2.20	0.41
1:B:701:THR:HA	1:B:702:PRO:C	2.40	0.41
1:B:684:SER:HB3	1:B:687:ILE:HD11	2.01	0.41
1:A:352:ASP:O	1:A:356:PRO:CD	2.68	0.41

*Continued on next page...*

Continued from previous page...

Atom-1	Atom-2	Interatomic distance (Å)	Clash overlap (Å)
1:A:323:GLU:HG2	1:B:328:GLU:HB3	2.03	0.41
1:B:512:ALA:HA	1:B:513:PRO:HD2	1.92	0.41
1:B:684:SER:O	1:B:685:GLY:C	2.59	0.41
1:A:418:ARG:C	1:A:420:GLN:N	2.73	0.41
1:B:353:GLN:HB3	1:B:353:GLN:HE21	1.69	0.41
1:A:589:MET:HA	1:A:649:VAL:O	2.20	0.41
1:A:413:SER:CB	1:A:697:ASN:ND2	2.84	0.41
1:B:428:ASP:OD1	1:B:430:ARG:HB2	2.21	0.41
2:B:750:HEM:CHA	4:B:800:S8F:H02	2.51	0.41
1:B:605:ASN:ND2	7:B:2075:HOH:O	2.47	0.40
1:A:587:TRP:NE1	5:A:860:ACT:H1	2.37	0.40
2:B:750:HEM:CBC	2:B:750:HEM:CMC	2.99	0.40

There are no symmetry-related clashes.

## 5.3 Torsion angles [i](#)

### 5.3.1 Protein backbone [i](#)

In the following table, the Percentiles column shows the percent Ramachandran outliers of the chain as a percentile score with respect to all X-ray entries followed by that with respect to entries of similar resolution.

The Analysed column shows the number of residues for which the backbone conformation was analysed, and the total number of residues.

Mol	Chain	Analysed	Favoured	Allowed	Outliers	Percentiles	
1	A	404/422 (96%)	382 (95%)	19 (5%)	3 (1%)	22	11
1	B	409/422 (97%)	389 (95%)	19 (5%)	1 (0%)	47	39
All	All	813/844 (96%)	771 (95%)	38 (5%)	4 (0%)	29	19

All (4) Ramachandran outliers are listed below:

Mol	Chain	Res	Type
1	A	333	GLY
1	A	489	ASP
1	A	575	GLY
1	B	352	ASP

### 5.3.2 Protein sidechains [i](#)

In the following table, the Percentiles column shows the percent sidechain outliers of the chain as a percentile score with respect to all X-ray entries followed by that with respect to entries of similar resolution.

The Analysed column shows the number of residues for which the sidechain conformation was analysed, and the total number of residues.

Mol	Chain	Analysed	Rotameric	Outliers	Percentiles	
1	A	363/377 (96%)	333 (92%)	30 (8%)	11	4
1	B	368/377 (98%)	348 (95%)	20 (5%)	22	14
All	All	731/754 (97%)	681 (93%)	50 (7%)	15	8

All (50) residues with a non-rotameric sidechain are listed below:

Mol	Chain	Res	Type
1	A	300	PHE
1	A	321	THR
1	A	322	LEU
1	A	337	LEU
1	A	350	THR
1	A	360	GLU
1	A	370	LYS
1	A	371	ARG
1	A	375	LYS
1	A	380	ARG
1	A	381	LEU
1	A	423	LYS
1	A	476	ASN
1	A	486	LYS
1	A	489	ASP
1	A	507	GLN
1	A	511	LYS
1	A	523	LEU
1	A	533	LEU
1	A	547	ARG
1	A	552	ASP
1	A	569	ASN
1	A	608	GLU
1	A	620	LYS
1	A	645	LYS
1	A	653	SER
1	A	660	LYS

*Continued on next page...*

*Continued from previous page...*

<b>Mol</b>	<b>Chain</b>	<b>Res</b>	<b>Type</b>
1	A	701	THR
1	A	713	THR
1	A	715	VAL
1	B	309	ASP
1	B	330	ILE
1	B	332	MET
1	B	337	LEU
1	B	353	GLN
1	B	382	GLU
1	B	392	SER
1	B	423	LYS
1	B	445	HIS
1	B	454	ASN
1	B	481	ARG
1	B	486	LYS
1	B	507	GLN
1	B	540	LEU
1	B	547	ARG
1	B	612	LYS
1	B	621	THR
1	B	627	ASP
1	B	643	SER
1	B	717	LYS

Some sidechains can be flipped to improve hydrogen bonding and reduce clashes. All (14) such sidechains are listed below:

<b>Mol</b>	<b>Chain</b>	<b>Res</b>	<b>Type</b>
1	A	353	GLN
1	A	364	GLN
1	A	454	ASN
1	A	527	ASN
1	A	535	GLN
1	A	569	ASN
1	A	605	ASN
1	A	642	GLN
1	A	697	ASN
1	B	364	GLN
1	B	385	ASN
1	B	454	ASN
1	B	605	ASN
1	B	697	ASN

### 5.3.3 RNA [i](#)

There are no RNA molecules in this entry.

## 5.4 Non-standard residues in protein, DNA, RNA chains [i](#)

There are no non-standard protein/DNA/RNA residues in this entry.

## 5.5 Carbohydrates [i](#)

There are no carbohydrates in this entry.

## 5.6 Ligand geometry [i](#)

Of 9 ligands modelled in this entry, 1 is monoatomic - leaving 8 for Mogul analysis.

In the following table, the Counts columns list the number of bonds (or angles) for which Mogul statistics could be retrieved, the number of bonds (or angles) that are observed in the model and the number of bonds (or angles) that are defined in the Chemical Component Dictionary. The Link column lists molecule types, if any, to which the group is linked. The Z score for a bond length (or angle) is the number of standard deviations the observed value is removed from the expected value. A bond length (or angle) with  $|Z| > 2$  is considered an outlier worth inspection. RMSZ is the root-mean-square of all Z scores of the bond lengths (or angles).

Mol	Type	Chain	Res	Link	Bond lengths			Bond angles		
					Counts	RMSZ	# Z  > 2	Counts	RMSZ	# Z  > 2
4	S8F	A	800	2	24,25,25	1.65	4 (16%)	30,32,32	2.89	16 (53%)
5	ACT	A	860	-	1,3,3	1.50	0	0,3,3	0.00	-
3	H4B	A	760	-	16,18,18	1.17	1 (6%)	11,26,26	3.22	10 (90%)
3	H4B	B	760	-	16,18,18	1.53	5 (31%)	11,26,26	2.97	4 (36%)
2	HEM	B	750	1,4	27,50,50	0.83	0	17,82,82	2.79	6 (35%)
5	ACT	B	860	-	1,3,3	0.00	0	0,3,3	0.00	-
2	HEM	A	750	1,4	27,50,50	1.09	1 (3%)	17,82,82	2.08	4 (23%)
4	S8F	B	800	2	24,25,25	1.57	4 (16%)	30,32,32	2.91	14 (46%)

In the following table, the Chirals column lists the number of chiral outliers, the number of chiral centers analysed, the number of these observed in the model and the number defined in the Chemical Component Dictionary. Similar counts are reported in the Torsion and Rings columns. '-' means no outliers of that kind were identified.

Mol	Type	Chain	Res	Link	Chirals	Torsions	Rings
4	S8F	A	800	2	-	2/8/12/12	0/3/3/3

*Continued on next page...*



Continued from previous page...

Mol	Type	Chain	Res	Link	Chirals	Torsions	Rings
3	H4B	A	760	-	-	0/8/17/17	0/2/2/2
3	H4B	B	760	-	-	0/8/17/17	0/2/2/2
2	HEM	B	750	1,4	-	0/6/54/54	-
2	HEM	A	750	1,4	-	0/6/54/54	-
4	S8F	B	800	2	-	4/8/12/12	0/3/3/3

All (15) bond length outliers are listed below:

Mol	Chain	Res	Type	Atoms	Z	Observed(Å)	Ideal(Å)
4	A	800	S8F	C04-N03	-4.83	1.32	1.39
4	B	800	S8F	C04-N03	-4.48	1.32	1.39
4	A	800	S8F	C12-N11	4.29	1.38	1.31
2	A	750	HEM	C3B-C2B	-3.24	1.35	1.40
4	B	800	S8F	C4'-C3'	2.94	1.42	1.37
3	B	760	H4B	C2-N1	2.94	1.40	1.35
4	B	800	S8F	C02-N03	-2.84	1.33	1.36
4	A	800	S8F	C12-N13	2.70	1.36	1.32
4	B	800	S8F	C12-N11	2.60	1.35	1.31
3	A	760	H4B	C2-N2	2.53	1.39	1.33
3	B	760	H4B	C7-N8	2.47	1.48	1.44
3	B	760	H4B	C4A-N5	-2.38	1.33	1.38
4	A	800	S8F	C4'-C3'	2.24	1.41	1.37
3	B	760	H4B	C4-N3	2.05	1.36	1.33
3	B	760	H4B	C7-C6	2.05	1.54	1.52

All (54) bond angle outliers are listed below:

Mol	Chain	Res	Type	Atoms	Z	Observed(°)	Ideal(°)
2	B	750	HEM	CBA-CAA-C2A	-9.20	95.52	112.49
3	B	760	H4B	C4-C4A-C8A	8.29	121.93	114.57
4	A	800	S8F	N11-C12-N13	-6.94	118.21	126.08
4	B	800	S8F	N11-C12-N03	6.66	125.14	114.81
2	A	750	HEM	CBA-CAA-C2A	-6.36	100.75	112.49
4	B	800	S8F	N11-C12-N13	-6.08	119.19	126.08
4	B	800	S8F	C16-N11-C12	5.91	121.86	114.04
4	A	800	S8F	N11-C12-N03	5.86	123.90	114.81
4	A	800	S8F	C14-C17-N18	-5.79	102.50	113.27
3	A	760	H4B	C4-C4A-C8A	5.34	119.31	114.57
4	A	800	S8F	C16-N11-C12	5.28	121.03	114.04
4	B	800	S8F	C04-N03-C02	4.82	117.24	108.50
3	A	760	H4B	N3-C2-N1	-4.51	118.34	125.42
4	A	800	S8F	C04-N03-C02	4.51	116.69	108.50

Continued on next page...

*Continued from previous page...*

Mol	Chain	Res	Type	Atoms	Z	Observed(°)	Ideal(°)
3	A	760	H4B	C4-N3-C2	4.44	122.99	115.93
4	B	800	S8F	C19-C20-C21	-4.19	105.49	112.95
4	B	800	S8F	C15-C16-N11	-3.69	119.37	123.96
4	A	800	S8F	C15-C16-N11	-3.55	119.55	123.96
3	A	760	H4B	C2-N1-C8A	3.48	122.35	114.54
2	A	750	HEM	CBD-CAD-C3D	-3.28	106.44	112.48
4	B	800	S8F	C05-C04-N03	-3.28	100.72	106.50
4	B	800	S8F	C02-N03-C12	-3.18	119.78	126.02
4	A	800	S8F	C05-C04-N03	-3.18	100.89	106.50
2	B	750	HEM	C1D-C2D-C3D	-3.11	104.83	107.00
4	B	800	S8F	C4'-C3'-C2'	-3.03	119.36	123.29
2	A	750	HEM	CMC-C2C-C3C	2.84	129.98	124.68
4	A	800	S8F	C02-N03-C12	-2.82	120.49	126.02
4	B	800	S8F	C6'-C1'-C2'	2.81	122.48	118.54
2	B	750	HEM	CAA-CBA-CGA	-2.79	107.99	112.67
2	B	750	HEM	CBD-CAD-C3D	-2.69	107.51	112.48
4	B	800	S8F	C21-C1'-C2'	-2.64	116.21	120.54
4	B	800	S8F	C14-C17-N18	-2.64	108.36	113.27
4	A	800	S8F	C04-N03-C12	-2.62	122.55	125.50
3	B	760	H4B	C4-N3-C2	2.55	119.98	115.93
3	B	760	H4B	C2-N1-C8A	2.55	120.25	114.54
4	B	800	S8F	C17-N18-C19	-2.53	104.74	113.41
3	A	760	H4B	C4-C4A-N5	2.51	121.22	119.12
4	A	800	S8F	C4'-C3'-C2'	-2.50	120.04	123.29
3	A	760	H4B	N2-C2-N3	2.47	121.09	117.25
2	B	750	HEM	CMB-C2B-C3B	2.40	129.17	124.68
3	A	760	H4B	C4A-N5-C6	-2.37	114.70	121.16
4	A	800	S8F	C21-C1'-C2'	-2.37	116.65	120.54
4	B	800	S8F	C04-N03-C12	-2.35	122.85	125.50
4	A	800	S8F	C16-C15-C14	2.31	118.79	116.62
2	A	750	HEM	C3C-C4C-NC	-2.24	106.71	110.94
4	A	800	S8F	C15-C14-N13	-2.20	119.62	122.41
4	A	800	S8F	N13-C12-N03	2.16	117.58	114.78
3	B	760	H4B	C4A-C4-N3	-2.15	117.90	124.01
3	A	760	H4B	O9-C9-C6	-2.14	103.85	108.98
3	A	760	H4B	N2-C2-N1	2.13	120.56	117.25
4	A	800	S8F	F7'-C3'-C4'	2.07	122.05	118.54
4	A	800	S8F	C04-C05-N01	2.06	111.19	107.57
3	A	760	H4B	C4A-C4-N3	-2.03	118.24	124.01
2	B	750	HEM	C3C-C4C-NC	-2.03	107.11	110.94

There are no chirality outliers.

All (6) torsion outliers are listed below:

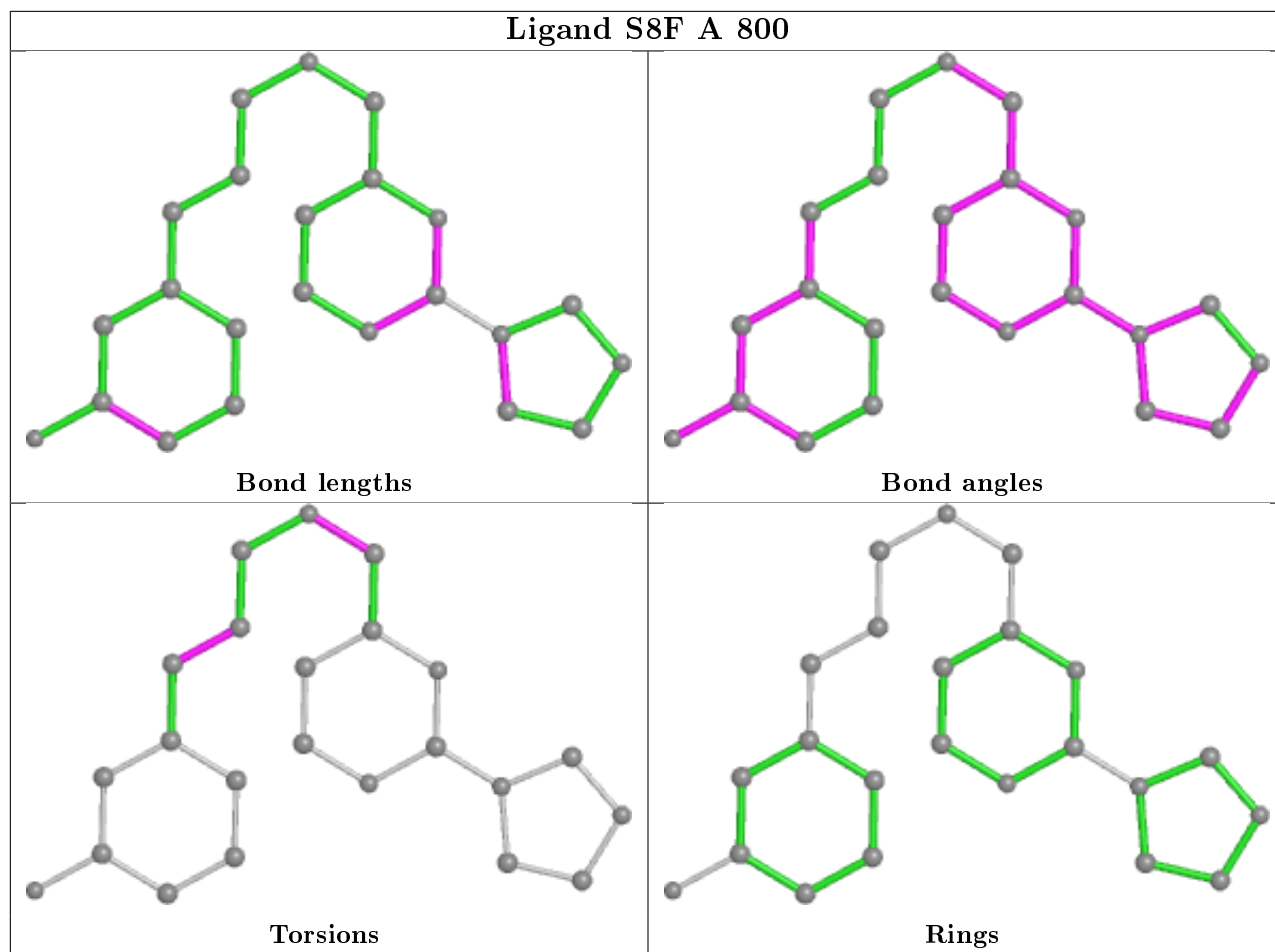
Mol	Chain	Res	Type	Atoms
4	A	800	S8F	C14-C17-N18-C19
4	A	800	S8F	C19-C20-C21-C1'
4	B	800	S8F	C14-C17-N18-C19
4	B	800	S8F	C19-C20-C21-C1'
4	B	800	S8F	C2'-C1'-C21-C20
4	B	800	S8F	C20-C19-N18-C17

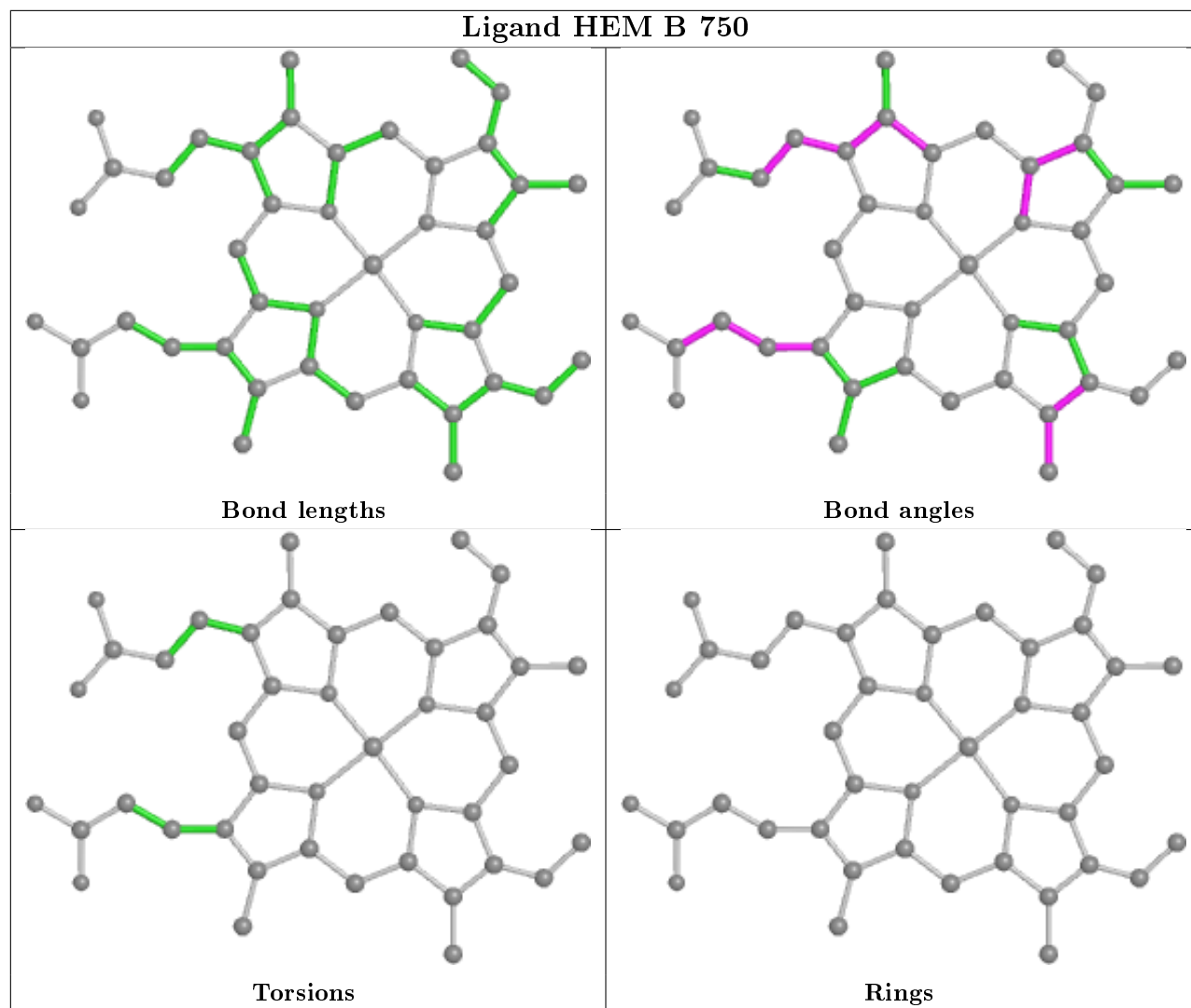
There are no ring outliers.

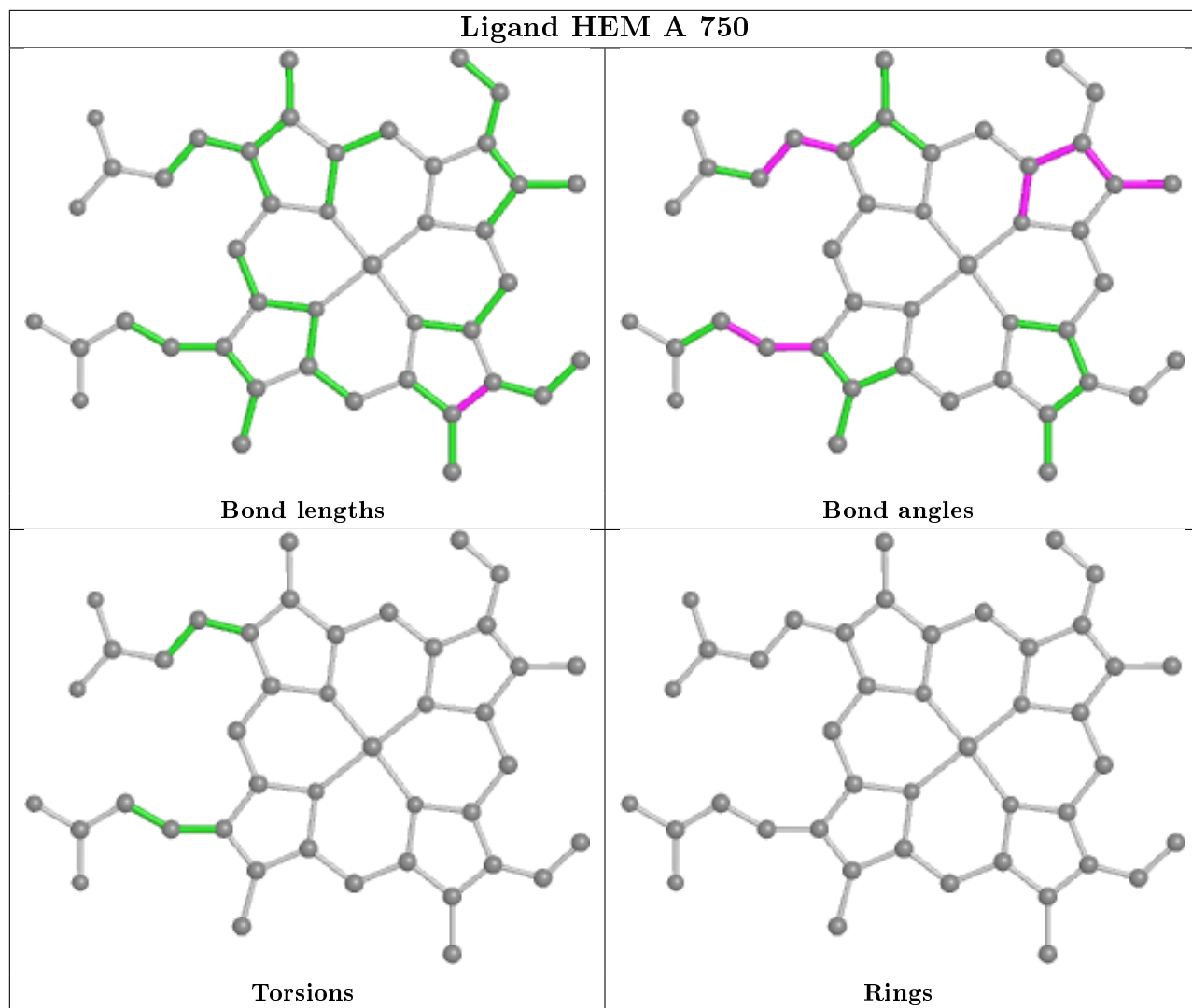
6 monomers are involved in 14 short contacts:

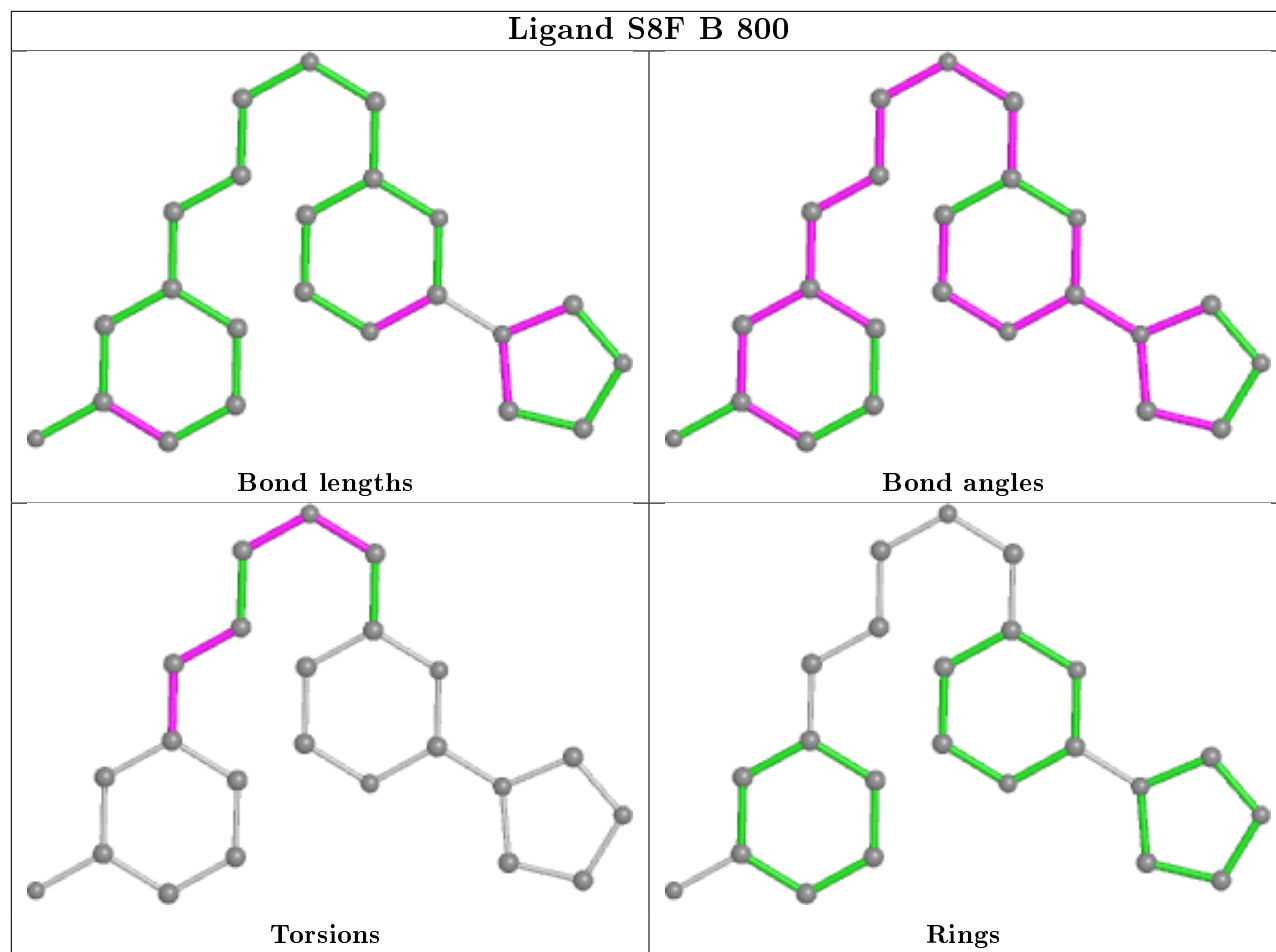
Mol	Chain	Res	Type	Clashes	Symm-Clashes
4	A	800	S8F	3	0
5	A	860	ACT	2	0
2	B	750	HEM	6	0
5	B	860	ACT	1	0
2	A	750	HEM	5	0
4	B	800	S8F	2	0

The following is a two-dimensional graphical depiction of Mogul quality analysis of bond lengths, bond angles, torsion angles, and ring geometry for all instances of the Ligand of Interest. In addition, ligands with molecular weight > 250 and outliers as shown on the validation Tables will also be included. For torsion angles, if less than 5% of the Mogul distribution of torsion angles is within 10 degrees of the torsion angle in question, then that torsion angle is considered an outlier. Any bond that is central to one or more torsion angles identified as an outlier by Mogul will be highlighted in the graph. For rings, the root-mean-square deviation (RMSD) between the ring in question and similar rings identified by Mogul is calculated over all ring torsion angles. If the average RMSD is greater than 60 degrees and the minimal RMSD between the ring in question and any Mogul-identified rings is also greater than 60 degrees, then that ring is considered an outlier. The outliers are highlighted in purple. The color gray indicates Mogul did not find sufficient equivalents in the CSD to analyse the geometry.









## 5.7 Other polymers [i](#)

There are no such residues in this entry.

## 5.8 Polymer linkage issues [i](#)

There are no chain breaks in this entry.

## 6 Fit of model and data

### 6.1 Protein, DNA and RNA chains

In the following table, the column labelled ‘#RSRZ> 2’ contains the number (and percentage) of RSRZ outliers, followed by percent RSRZ outliers for the chain as percentile scores relative to all X-ray entries and entries of similar resolution. The OWAB column contains the minimum, median, 95<sup>th</sup> percentile and maximum values of the occupancy-weighted average B-factor per residue. The column labelled ‘Q< 0.9’ lists the number of (and percentage) of residues with an average occupancy less than 0.9.

Mol	Chain	Analysed	<RSRZ>	#RSRZ>2	OWAB(Å <sup>2</sup> )	Q<0.9
1	A	408/422 (96%)	0.35	36 (8%) 10 10	30, 50, 79, 106	0
1	B	411/422 (97%)	-0.03	12 (2%) 51 54	29, 43, 69, 88	0
All	All	819/844 (97%)	0.16	48 (5%) 22 23	29, 46, 77, 106	0

All (48) RSRZ outliers are listed below:

Mol	Chain	Res	Type	RSRZ
1	A	716	TRP	6.2
1	A	715	VAL	5.9
1	A	299	ARG	5.3
1	A	713	THR	4.9
1	B	300	PHE	4.7
1	A	488	PRO	4.6
1	B	619	ARG	4.6
1	B	718	GLY	4.0
1	A	489	ASP	3.8
1	B	616	LEU	3.8
1	B	348	VAL	3.8
1	A	352	ASP	3.8
1	A	351	LYS	3.7
1	A	486	LYS	3.5
1	A	507	GLN	3.5
1	A	487	GLN	3.2
1	A	355	PHE	3.1
1	A	619	ARG	3.0
1	A	321	THR	2.9
1	A	388	ILE	2.8
1	A	390	SER	2.8
1	B	310	VAL	2.7
1	A	490	GLY	2.7
1	A	677	VAL	2.5

*Continued on next page...*



*Continued from previous page...*

Mol	Chain	Res	Type	RSRZ
1	A	503	GLU	2.5
1	B	620	LYS	2.5
1	A	392	SER	2.5
1	A	714	HIS	2.5
1	A	508	GLN	2.4
1	A	300	PHE	2.4
1	B	667	ARG	2.4
1	A	678	TRP	2.4
1	B	615	ASP	2.4
1	A	415	CYS	2.3
1	A	667	ARG	2.3
1	A	391	THR	2.3
1	B	677	VAL	2.2
1	A	389	GLU	2.2
1	A	643	SER	2.2
1	A	511	LYS	2.2
1	A	712	ASN	2.2
1	A	480	ILE	2.2
1	A	386	LYS	2.1
1	A	302	LYS	2.1
1	A	506	ILE	2.1
1	A	593	ILE	2.1
1	B	301	LEU	2.0
1	B	591	THR	2.0

## 6.2 Non-standard residues in protein, DNA, RNA chains [i](#)

There are no non-standard protein/DNA/RNA residues in this entry.

## 6.3 Carbohydrates [i](#)

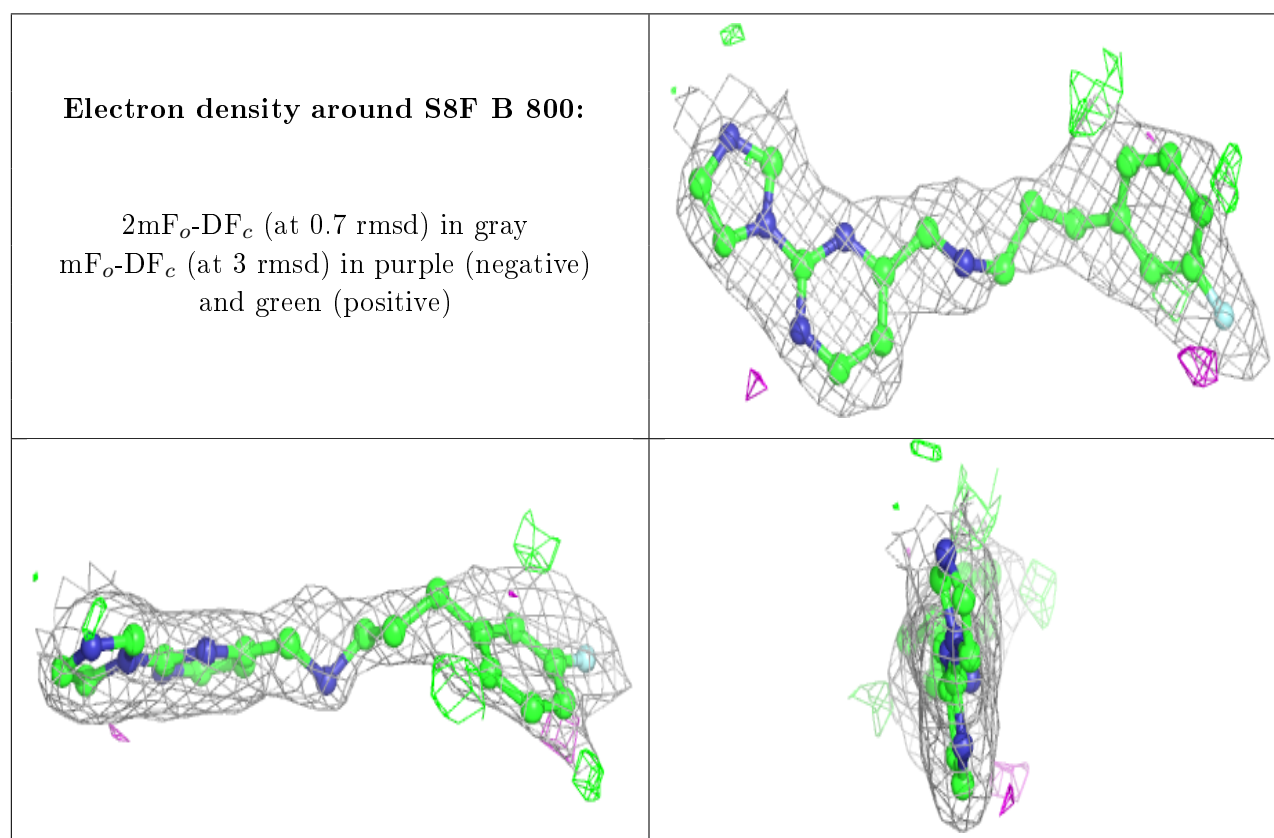
There are no carbohydrates in this entry.

## 6.4 Ligands [i](#)

In the following table, the Atoms column lists the number of modelled atoms in the group and the number defined in the chemical component dictionary. The B-factors column lists the minimum, median, 95<sup>th</sup> percentile and maximum values of B factors of atoms in the group. The column labelled 'Q< 0.9' lists the number of atoms with occupancy less than 0.9.

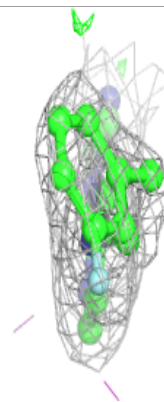
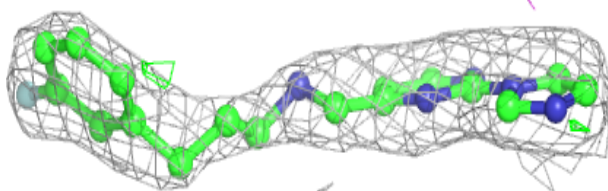
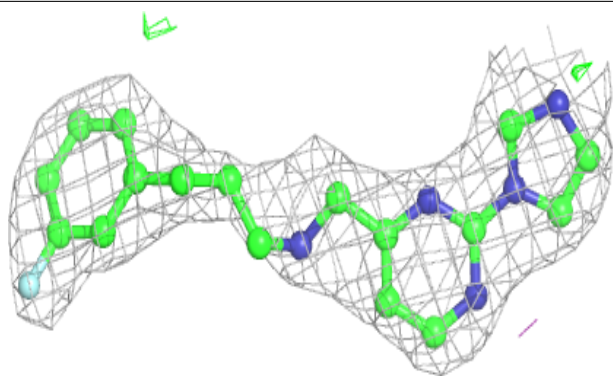
Mol	Type	Chain	Res	Atoms	RSCC	RSR	B-factors( $\text{\AA}^2$ )	Q<0.9
3	H4B	A	760	17/17	0.94	0.17	37,41,44,44	0
3	H4B	B	760	17/17	0.94	0.16	34,37,46,46	0
4	S8F	B	800	23/23	0.94	0.18	40,51,68,70	0
5	ACT	A	860	4/4	0.95	0.11	70,71,74,78	0
4	S8F	A	800	23/23	0.95	0.20	38,51,77,80	0
2	HEM	A	750	43/43	0.97	0.20	34,38,50,54	0
5	ACT	B	860	4/4	0.97	0.11	52,53,55,59	0
6	ZN	A	900	1/1	0.98	0.11	45,45,45,45	0
2	HEM	B	750	43/43	0.98	0.15	34,37,47,54	0

The following is a graphical depiction of the model fit to experimental electron density of all instances of the Ligand of Interest. In addition, ligands with molecular weight > 250 and outliers as shown on the geometry validation Tables will also be included. Each fit is shown from different orientation to approximate a three-dimensional view.



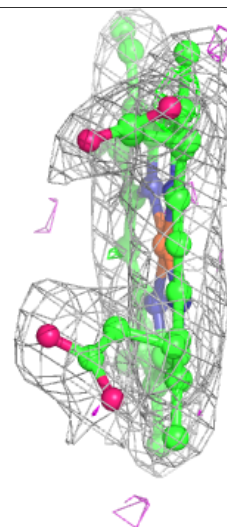
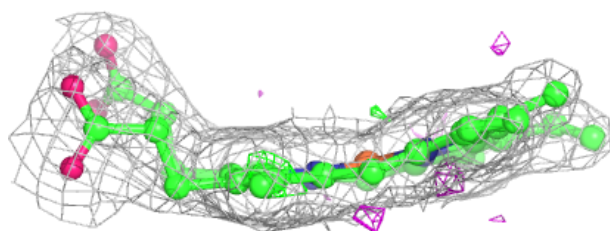
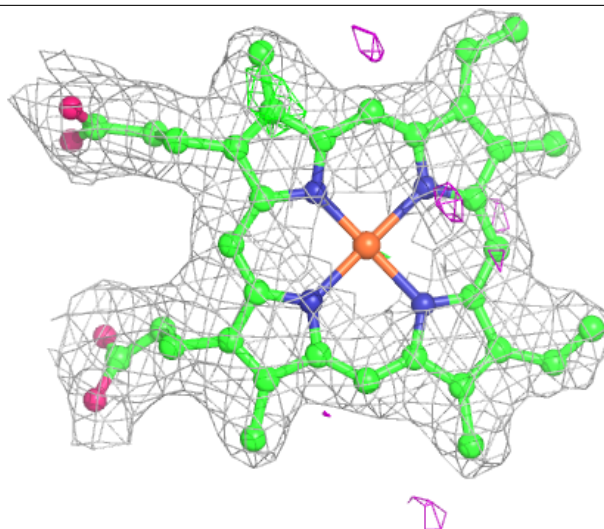
**Electron density around S8F A 800:**

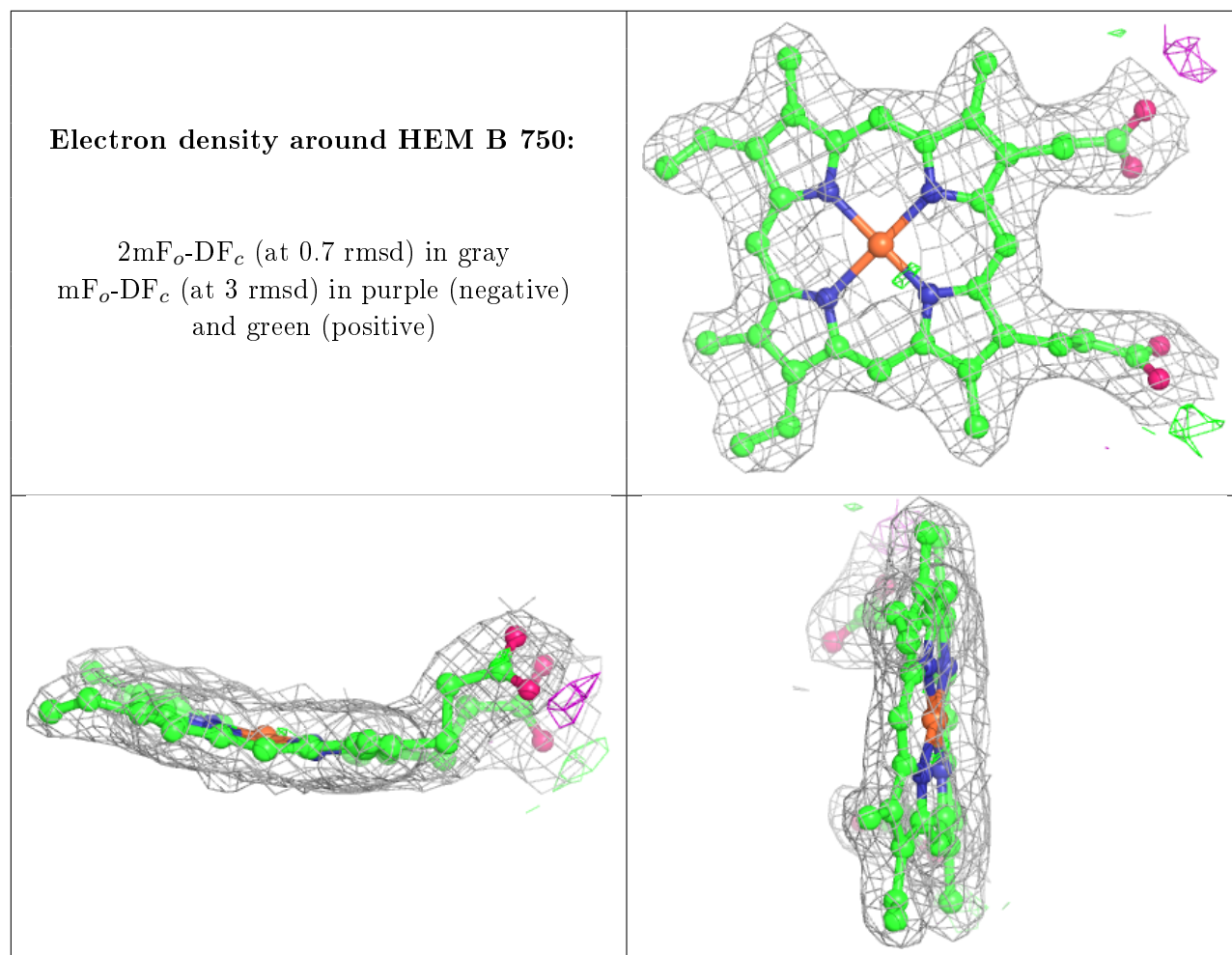
$2mF_o-DF_c$  (at 0.7 rmsd) in gray  
 $mF_o-DF_c$  (at 3 rmsd) in purple (negative)  
and green (positive)



**Electron density around HEM A 750:**

$2mF_o-DF_c$  (at 0.7 rmsd) in gray  
 $mF_o-DF_c$  (at 3 rmsd) in purple (negative)  
and green (positive)





## 6.5 Other polymers [i](#)

There are no such residues in this entry.