



# wwPDB X-ray Structure Validation Summary Report ⓘ

Dec 3, 2023 – 12:31 pm GMT

PDB ID : 2V50  
Title : The Missing Part of the Bacterial MexAB-OprM System: Structural determination of the Multidrug Exporter MexB  
Authors : Sennhauser, G.; Bukowska, M.A.; Gruetter, M.G.  
Deposited on : 2008-10-01  
Resolution : 3.00 Å(reported)

This is a wwPDB X-ray Structure Validation Summary Report for a publicly released PDB entry.

We welcome your comments at [validation@mail.wwpdb.org](mailto:validation@mail.wwpdb.org)

A user guide is available at

<https://www.wwpdb.org/validation/2017/XrayValidationReportHelp>

with specific help available everywhere you see the ⓘ symbol.

The types of validation reports are described at

<http://www.wwpdb.org/validation/2017/FAQs#types>.

---

The following versions of software and data (see [references ⓘ](#)) were used in the production of this report:

MolProbity : 4.02b-467  
Mogul : 1.8.4, CSD as541be (2020)  
Xtriage (Phenix) : 1.13  
EDS : 2.36  
buster-report : 1.1.7 (2018)  
Percentile statistics : 20191225.v01 (using entries in the PDB archive December 25th 2019)  
Refmac : 5.8.0158  
CCP4 : 7.0.044 (Gargrove)  
Ideal geometry (proteins) : Engh & Huber (2001)  
Ideal geometry (DNA, RNA) : Parkinson et al. (1996)  
Validation Pipeline (wwPDB-VP) : 2.36

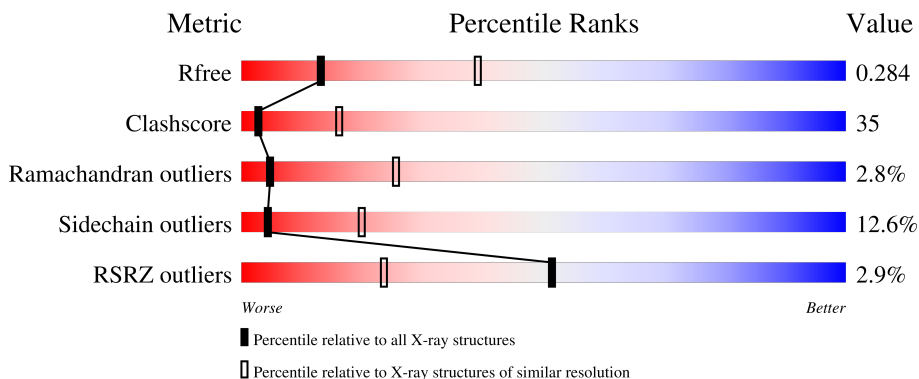
# 1 Overall quality at a glance

The following experimental techniques were used to determine the structure:

*X-RAY DIFFRACTION*

The reported resolution of this entry is 3.00 Å.

Percentile scores (ranging between 0-100) for global validation metrics of the entry are shown in the following graphic. The table shows the number of entries on which the scores are based.



Metric	Whole archive (#Entries)	Similar resolution (#Entries, resolution range(Å))
$R_{free}$	130704	2092 (3.00-3.00)
Clashscore	141614	2416 (3.00-3.00)
Ramachandran outliers	138981	2333 (3.00-3.00)
Sidechain outliers	138945	2336 (3.00-3.00)
RSRZ outliers	127900	1990 (3.00-3.00)

The table below summarises the geometric issues observed across the polymeric chains and their fit to the electron density. The red, orange, yellow and green segments of the lower bar indicate the fraction of residues that contain outliers for  $\geq 3$ , 2, 1 and 0 types of geometric quality criteria respectively. A grey segment represents the fraction of residues that are not modelled. The numeric value for each fraction is indicated below the corresponding segment, with a dot representing fractions  $\leq 5\%$ . The upper red bar (where present) indicates the fraction of residues that have poor fit to the electron density. The numeric value is given above the bar.

Mol	Chain	Length	Quality of chain
1	A	1052	
1	B	1052	
1	C	1052	
1	D	1052	
1	E	1052	

*Continued on next page...*

*Continued from previous page...*

Mol	Chain	Length	Quality of chain
1	F	1052	

The following table lists non-polymeric compounds, carbohydrate monomers and non-standard residues in protein, DNA, RNA chains that are outliers for geometric or electron-density-fit criteria:

Mol	Type	Chain	Res	Chirality	Geometry	Clashes	Electron density
2	LMT	B	2033	-	-	-	X

## 2 Entry composition [i](#)

There are 2 unique types of molecules in this entry. The entry contains 46628 atoms, of which 0 are hydrogens and 0 are deuteriums.

In the tables below, the ZeroOcc column contains the number of atoms modelled with zero occupancy, the AltConf column contains the number of residues with at least one atom in alternate conformation and the Trace column contains the number of residues modelled with at most 2 atoms.

- Molecule 1 is a protein called MULTIDRUG RESISTANCE PROTEIN MEXB.

Mol	Chain	Residues	Atoms					ZeroOcc	AltConf	Trace
			Total	C	N	O	S			
1	A	1005	7634	4920	1265	1410	39	6	0	0
1	B	1030	7812	5027	1298	1447	40	0	0	0
1	C	1030	7812	5027	1298	1447	40	12	0	0
1	D	998	7582	4888	1255	1399	40	0	0	0
1	E	1012	7696	4956	1279	1421	40	0	0	0
1	F	1030	7812	5027	1298	1447	40	0	0	0

There are 36 discrepancies between the modelled and reference sequences:

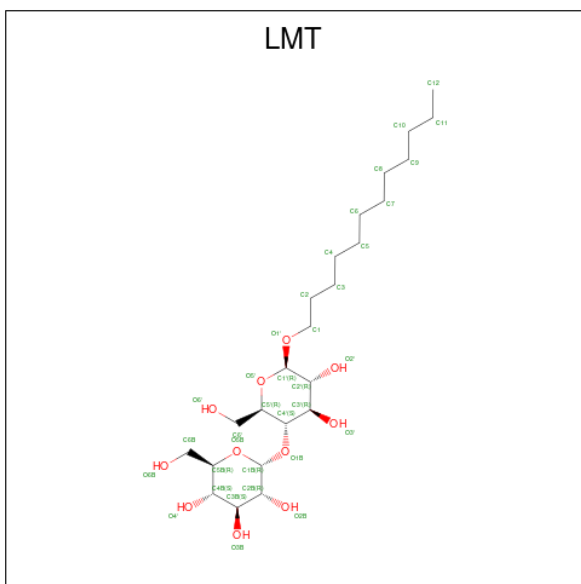
Chain	Residue	Modelled	Actual	Comment	Reference
A	1047	HIS	-	expression tag	UNP P52002
A	1048	HIS	-	expression tag	UNP P52002
A	1049	HIS	-	expression tag	UNP P52002
A	1050	HIS	-	expression tag	UNP P52002
A	1051	HIS	-	expression tag	UNP P52002
A	1052	HIS	-	expression tag	UNP P52002
B	1047	HIS	-	expression tag	UNP P52002
B	1048	HIS	-	expression tag	UNP P52002
B	1049	HIS	-	expression tag	UNP P52002
B	1050	HIS	-	expression tag	UNP P52002
B	1051	HIS	-	expression tag	UNP P52002
B	1052	HIS	-	expression tag	UNP P52002
C	1047	HIS	-	expression tag	UNP P52002
C	1048	HIS	-	expression tag	UNP P52002
C	1049	HIS	-	expression tag	UNP P52002
C	1050	HIS	-	expression tag	UNP P52002
C	1051	HIS	-	expression tag	UNP P52002

*Continued on next page...*

Continued from previous page...

Chain	Residue	Modelled	Actual	Comment	Reference
C	1052	HIS	-	expression tag	UNP P52002
D	1047	HIS	-	expression tag	UNP P52002
D	1048	HIS	-	expression tag	UNP P52002
D	1049	HIS	-	expression tag	UNP P52002
D	1050	HIS	-	expression tag	UNP P52002
D	1051	HIS	-	expression tag	UNP P52002
D	1052	HIS	-	expression tag	UNP P52002
E	1047	HIS	-	expression tag	UNP P52002
E	1048	HIS	-	expression tag	UNP P52002
E	1049	HIS	-	expression tag	UNP P52002
E	1050	HIS	-	expression tag	UNP P52002
E	1051	HIS	-	expression tag	UNP P52002
E	1052	HIS	-	expression tag	UNP P52002
F	1047	HIS	-	expression tag	UNP P52002
F	1048	HIS	-	expression tag	UNP P52002
F	1049	HIS	-	expression tag	UNP P52002
F	1050	HIS	-	expression tag	UNP P52002
F	1051	HIS	-	expression tag	UNP P52002
F	1052	HIS	-	expression tag	UNP P52002

- Molecule 2 is DODECYL-BETA-D-MALTOSE (three-letter code: LMT) (formula:  $C_{24}H_{46}O_{11}$ ).



Mol	Chain	Residues	Atoms		ZeroOcc	AltConf	
2	A	1	Total	C	O	0	0
			35	24	11		

Continued on next page...

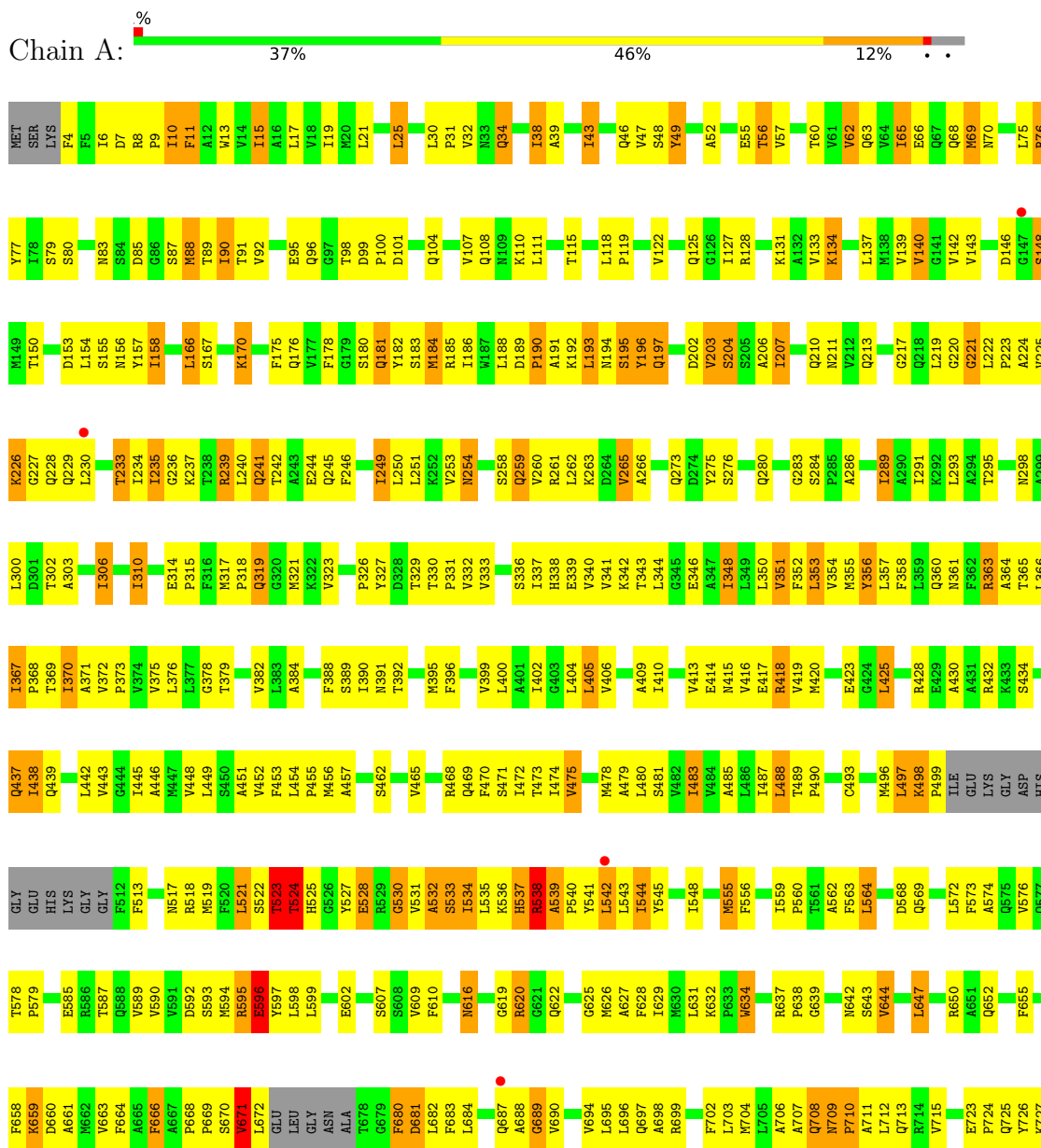
*Continued from previous page...*

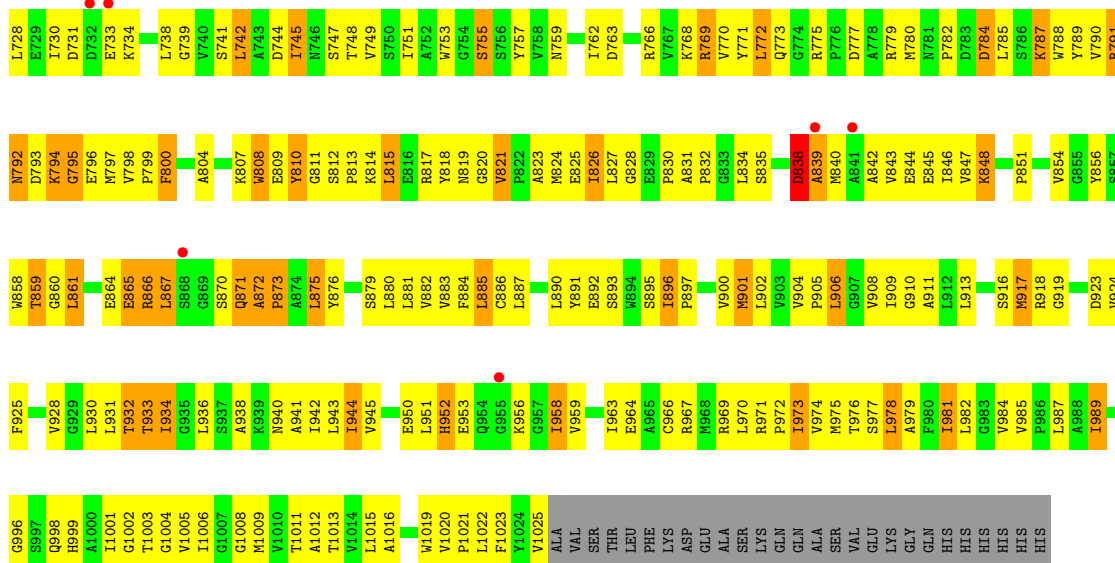
<b>Mol</b>	<b>Chain</b>	<b>Residues</b>	<b>Atoms</b>			<b>ZeroOcc</b>	<b>AltConf</b>
2	B	1	Total 35	C 24	O 11	0	0
2	B	1	Total 35	C 24	O 11	0	0
2	B	1	Total 35	C 24	O 11	0	0
2	D	1	Total 35	C 24	O 11	0	0
2	E	1	Total 35	C 24	O 11	0	0
2	E	1	Total 35	C 24	O 11	0	0
2	E	1	Total 35	C 24	O 11	0	0

### 3 Residue-property plots

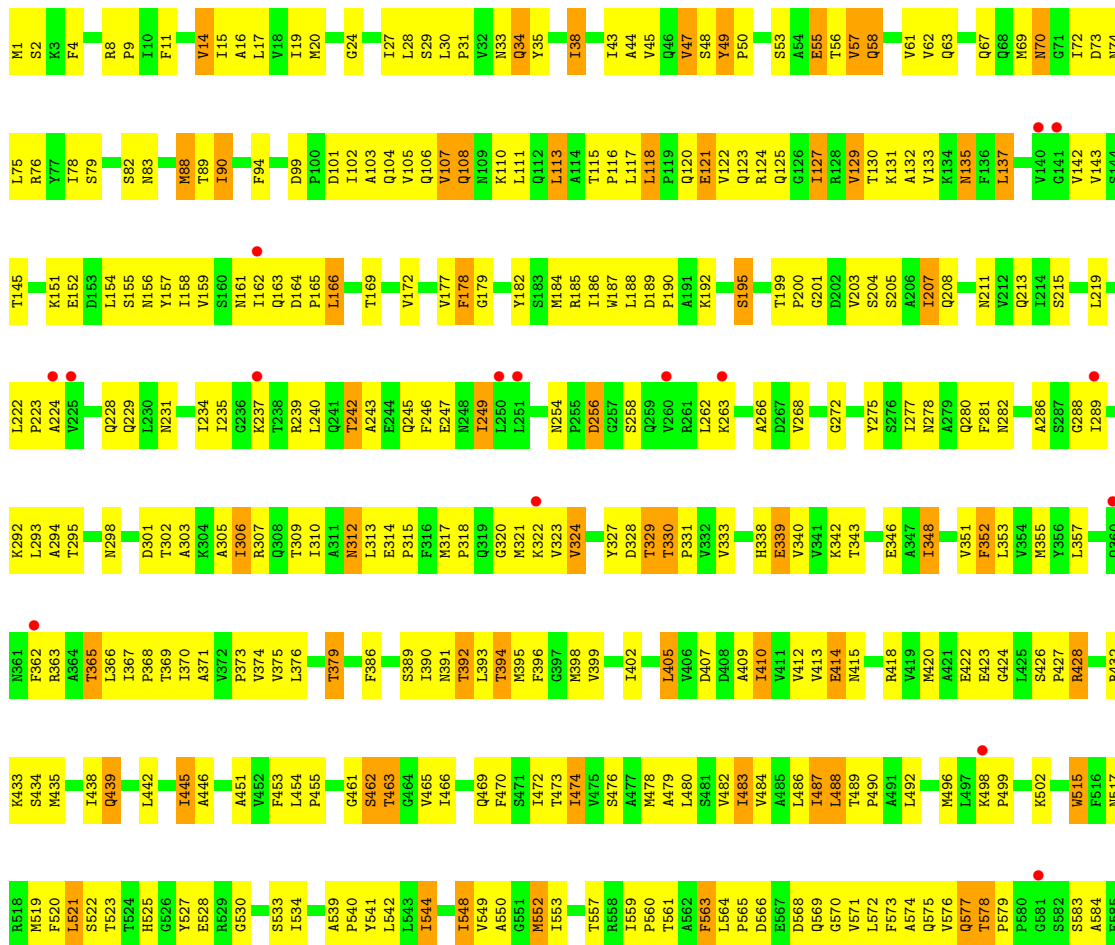
These plots are drawn for all protein, RNA, DNA and oligosaccharide chains in the entry. The first graphic for a chain summarises the proportions of the various outlier classes displayed in the second graphic. The second graphic shows the sequence view annotated by issues in geometry and electron density. Residues are color-coded according to the number of geometric quality criteria for which they contain at least one outlier: green = 0, yellow = 1, orange = 2 and red = 3 or more. A red dot above a residue indicates a poor fit to the electron density ( $RSRZ > 2$ ). Stretches of 2 or more consecutive residues without any outlier are shown as a green connector. Residues present in the sample, but not in the model, are shown in grey.

- Molecule 1: MULTIDRUG RESISTANCE PROTEIN MEXB

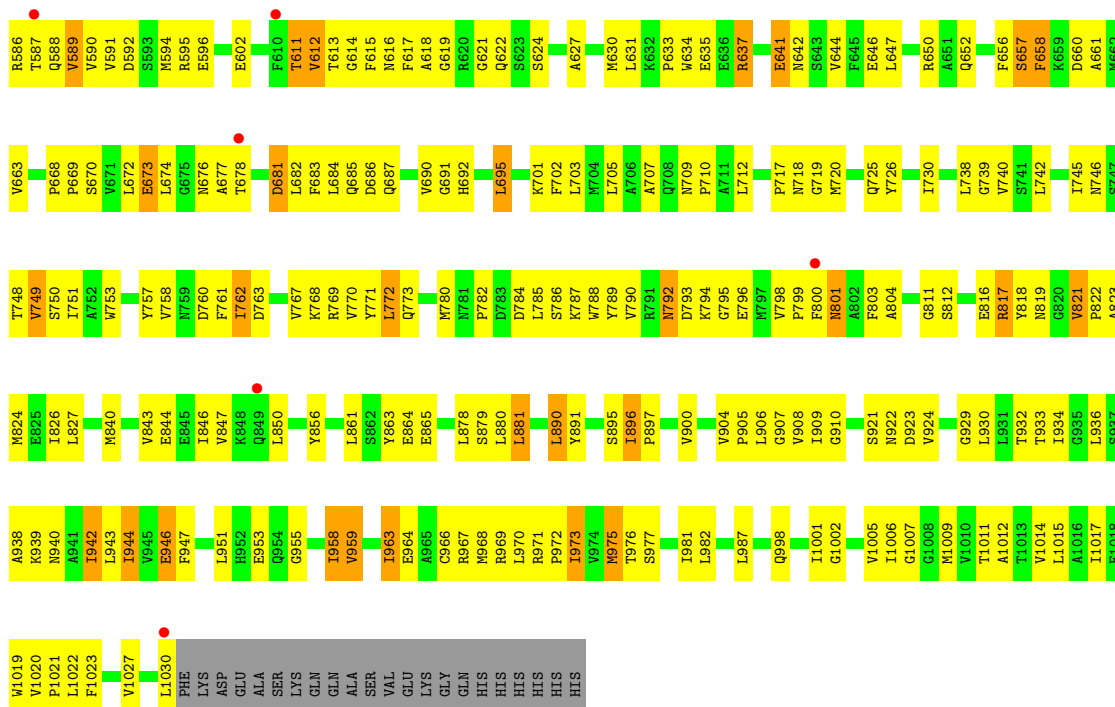




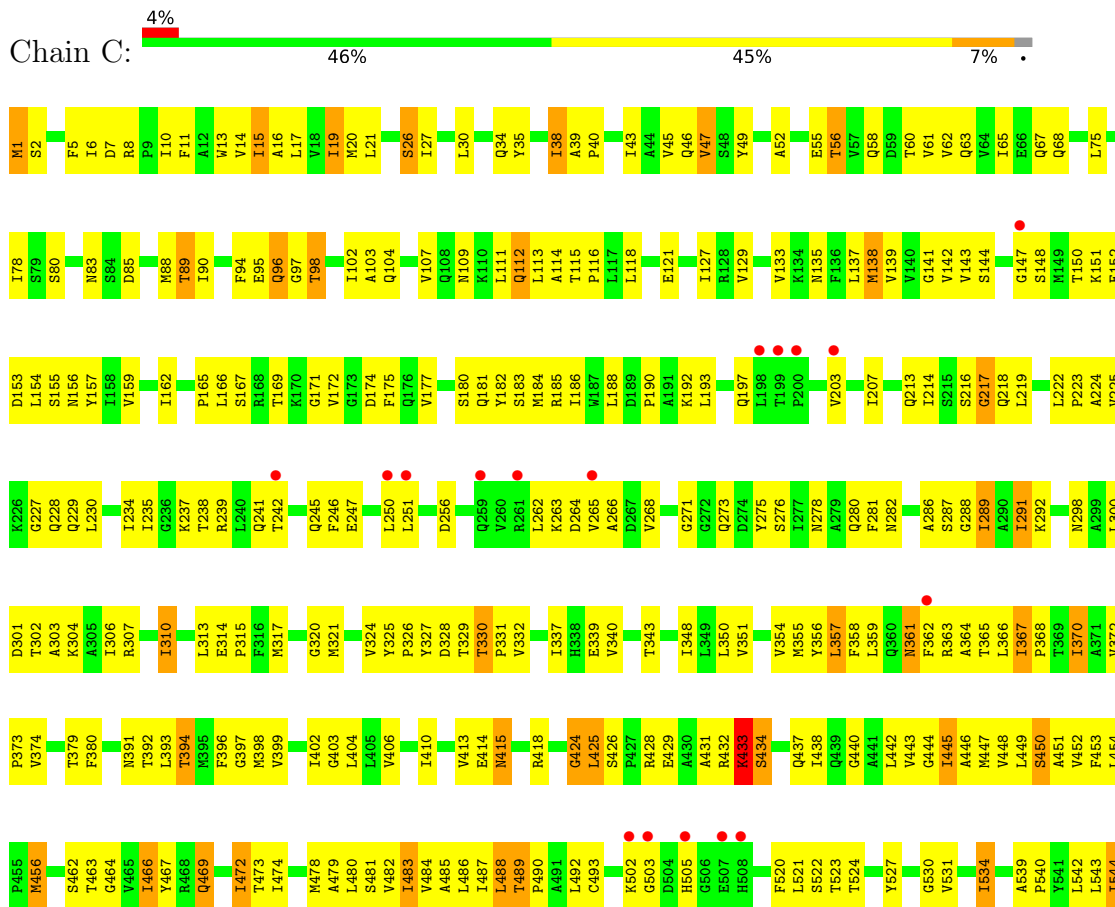
● Molecule 1: MULTIDRUG RESISTANCE PROTEIN MEXB

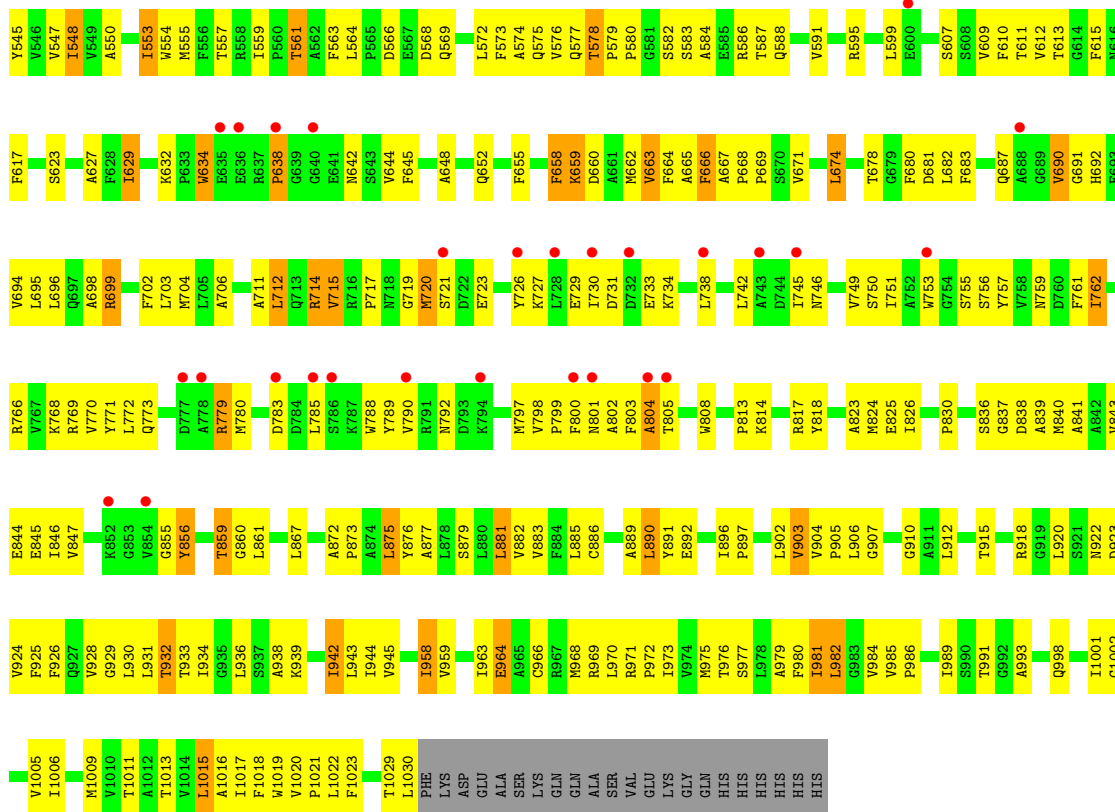




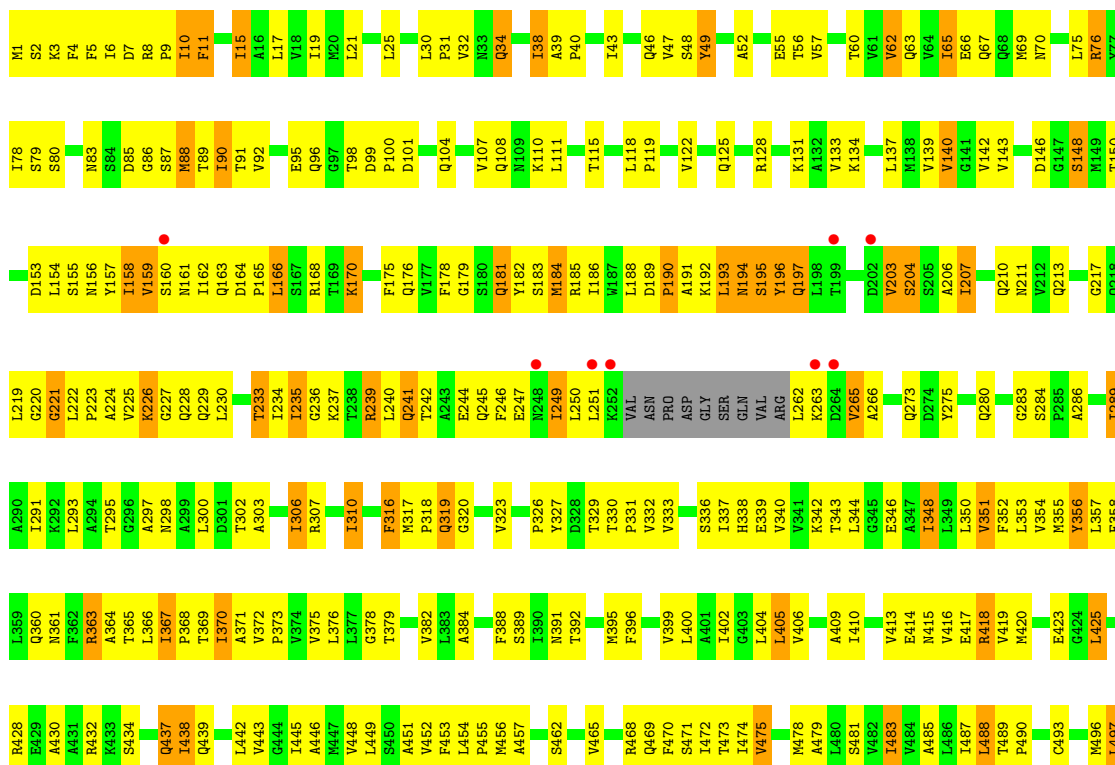


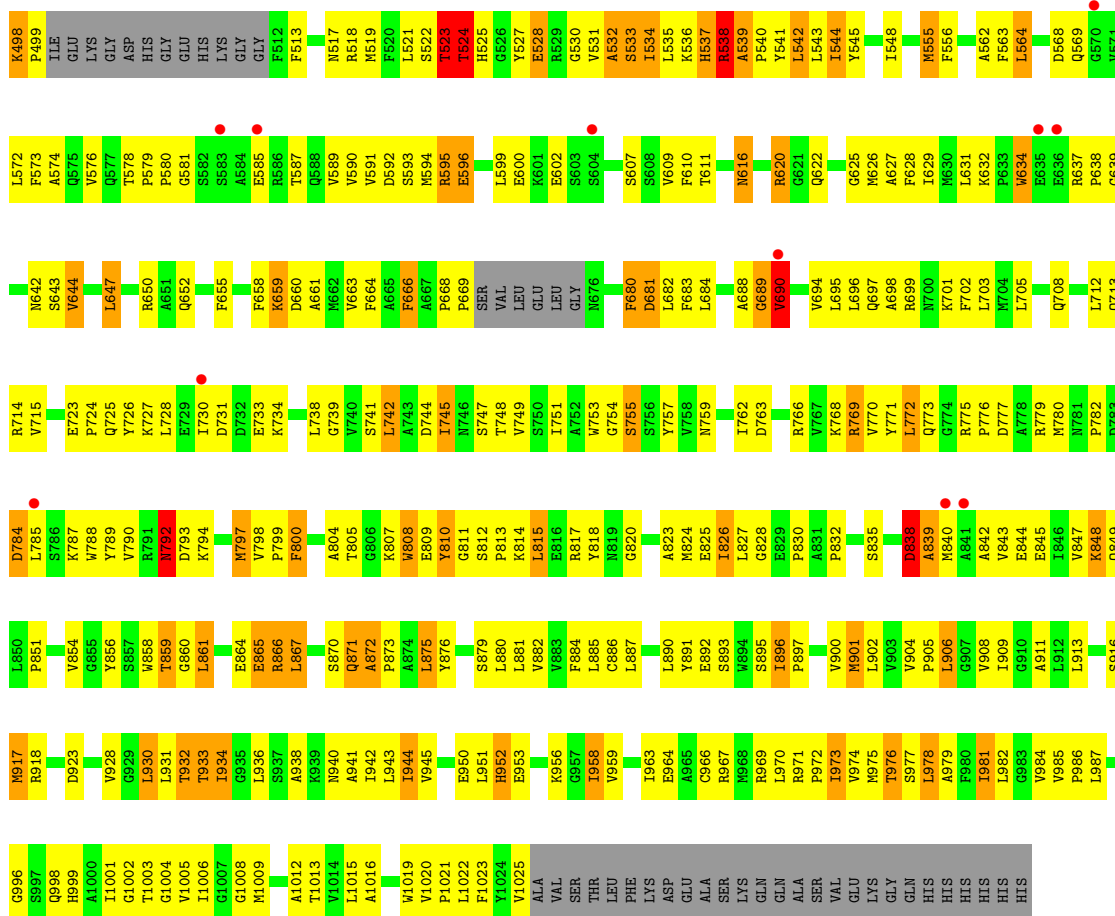
● Molecule 1: MULTIDRUG RESISTANCE PROTEIN MEXB



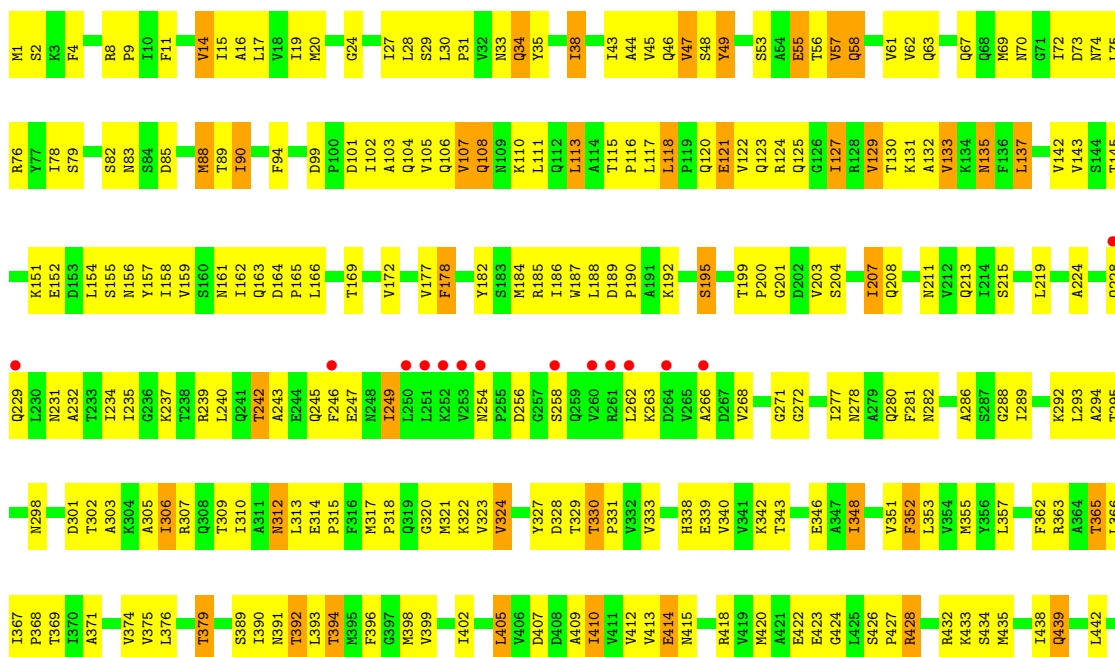


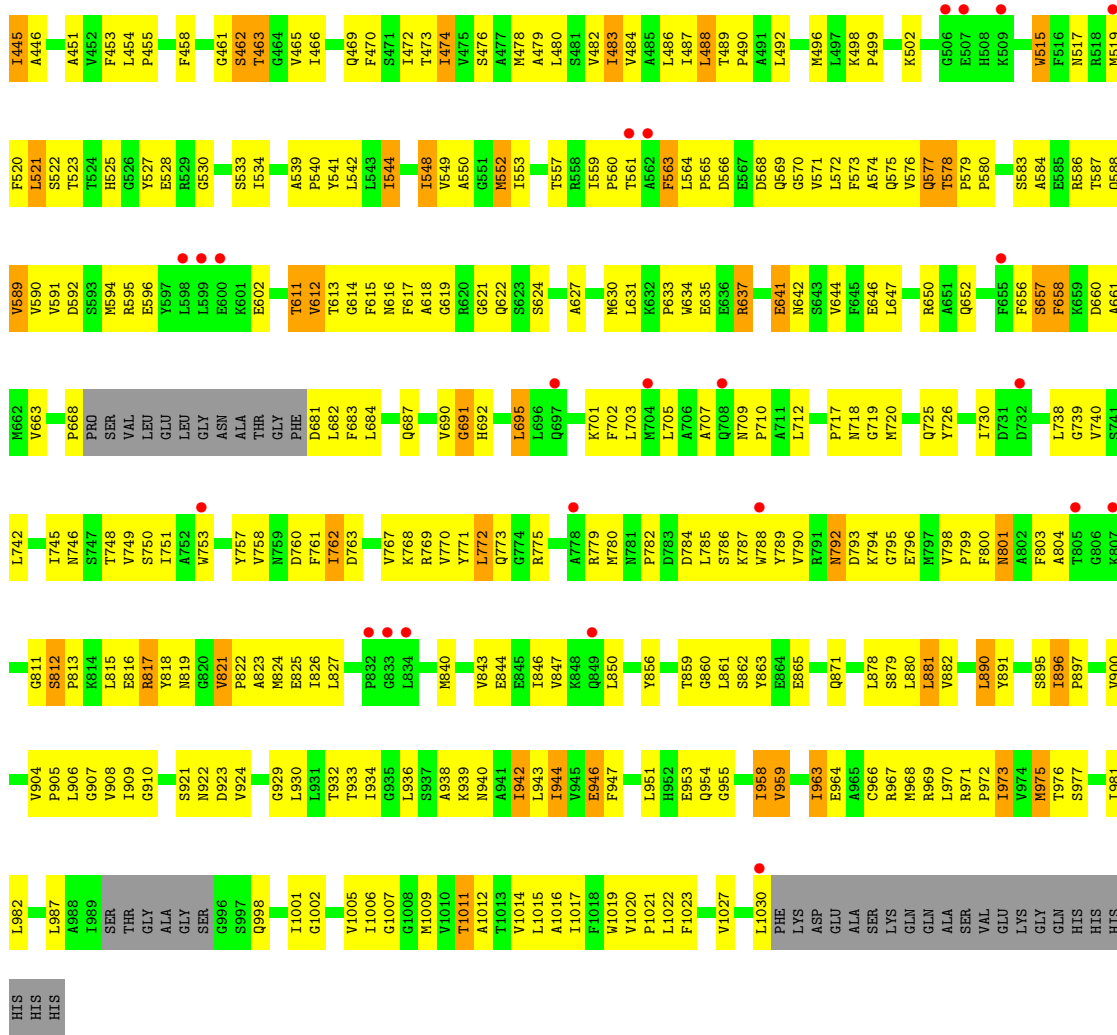
● Molecule 1: MULTIDRUG RESISTANCE PROTEIN MEXB



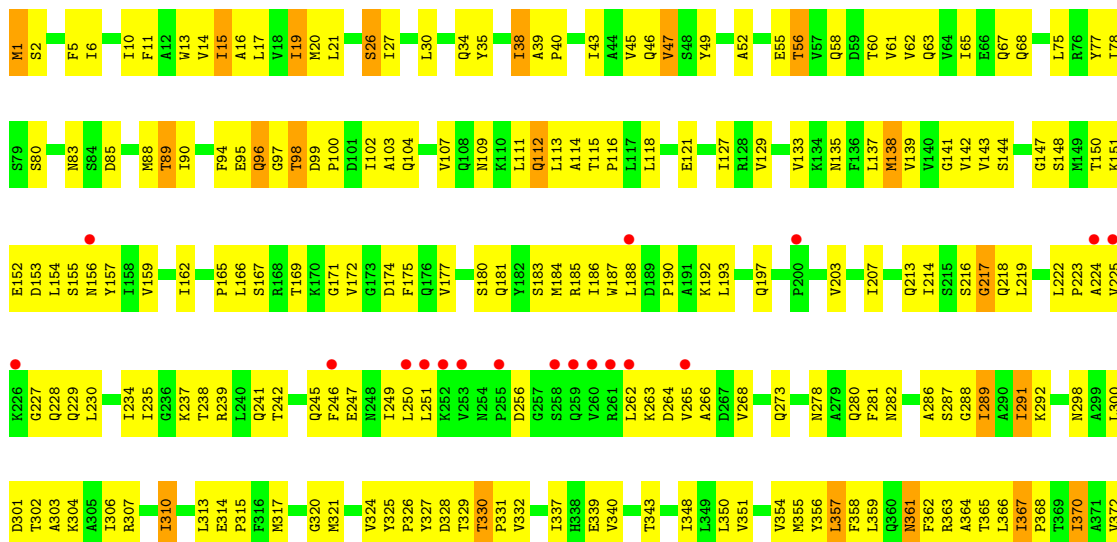


• Molecule 1: MULTIDRUG RESISTANCE PROTEIN MEXB





• Molecule 1: MULTIDRUG RESISTANCE PROTEIN MEXB





## 4 Data and refinement statistics

Property	Value	Source
Space group	P 1	Depositor
Cell constants a, b, c, $\alpha$ , $\beta$ , $\gamma$	125.05Å 134.58Å 151.02Å 86.99° 69.70° 88.16°	Depositor
Resolution (Å)	49.76 – 3.00 49.76 – 3.00	Depositor EDS
% Data completeness (in resolution range)	96.3 (49.76-3.00) 96.3 (49.76-3.00)	Depositor EDS
$R_{merge}$	0.04	Depositor
$R_{sym}$	(Not available)	Depositor
$\langle I/\sigma(I) \rangle$ <sup>1</sup>	2.13 (at 3.01Å)	Xtrriage
Refinement program	PHENIX (PHENIX.REFINE)	Depositor
R, $R_{free}$	0.242 , 0.287 0.241 , 0.284	Depositor DCC
$R_{free}$ test set	3539 reflections (2.00%)	wwPDB-VP
Wilson B-factor (Å <sup>2</sup> )	88.4	Xtrriage
Anisotropy	0.217	Xtrriage
Bulk solvent $k_{sol}$ (e/Å <sup>3</sup> ), $B_{sol}$ (Å <sup>2</sup> )	0.27 , 66.2	EDS
L-test for twinning <sup>2</sup>	$\langle  L  \rangle = 0.49$ , $\langle L^2 \rangle = 0.32$	Xtrriage
Estimated twinning fraction	No twinning to report.	Xtrriage
$F_o, F_c$ correlation	0.92	EDS
Total number of atoms	46628	wwPDB-VP
Average B, all atoms (Å <sup>2</sup> )	100.0	wwPDB-VP

Xtrriage's analysis on translational NCS is as follows: *The largest off-origin peak in the Patterson function is 4.15% of the height of the origin peak. No significant pseudotranslation is detected.*

<sup>1</sup>Intensities estimated from amplitudes.

<sup>2</sup>Theoretical values of  $\langle |L| \rangle$ ,  $\langle L^2 \rangle$  for acentric reflections are 0.5, 0.333 respectively for untwinned datasets, and 0.375, 0.2 for perfectly twinned datasets.

## 5 Model quality

### 5.1 Standard geometry

Bond lengths and bond angles in the following residue types are not validated in this section: LMT

The Z score for a bond length (or angle) is the number of standard deviations the observed value is removed from the expected value. A bond length (or angle) with  $|Z| > 5$  is considered an outlier worth inspection. RMSZ is the root-mean-square of all Z scores of the bond lengths (or angles).

Mol	Chain	Bond lengths		Bond angles	
		RMSZ	# Z  >5	RMSZ	# Z  >5
1	A	0.30	0/7789	0.50	0/10588
1	B	0.30	0/7971	0.46	0/10833
1	C	0.27	0/7971	0.45	0/10833
1	D	0.30	0/7735	0.50	0/10510
1	E	0.29	0/7851	0.47	0/10666
1	F	0.28	0/7971	0.45	0/10833
All	All	0.29	0/47288	0.47	0/64263

There are no bond length outliers.

There are no bond angle outliers.

There are no chirality outliers.

There are no planarity outliers.

### 5.2 Too-close contacts

In the following table, the Non-H and H(model) columns list the number of non-hydrogen atoms and hydrogen atoms in the chain respectively. The H(added) column lists the number of hydrogen atoms added and optimized by MolProbity. The Clashes column lists the number of clashes within the asymmetric unit, whereas Symm-Clashes lists symmetry-related clashes.

Mol	Chain	Non-H	H(model)	H(added)	Clashes	Symm-Clashes
1	A	7634	0	7765	689	0
1	B	7812	0	7944	541	0
1	C	7812	0	7944	509	0
1	D	7582	0	7716	665	0
1	E	7696	0	7832	528	0
1	F	7812	0	7944	509	0
2	A	35	0	46	10	0

*Continued on next page...*

Continued from previous page...

Mol	Chain	Non-H	H(model)	H(added)	Clashes	Symm-Clashes
2	B	105	0	138	17	0
2	D	35	0	46	5	0
2	E	105	0	138	22	0
All	All	46628	0	47513	3338	0

The all-atom clashscore is defined as the number of clashes found per 1000 atoms (including hydrogen atoms). The all-atom clashscore for this structure is 35.

The worst 5 of 3338 close contacts within the same asymmetric unit are listed below, sorted by their clash magnitude.

Atom-1	Atom-2	Interatomic distance (Å)	Clash overlap (Å)
1:A:76:ARG:HG2	1:A:76:ARG:HH11	1.09	1.13
1:B:43:ILE:HG21	1:B:107:VAL:HG11	1.30	1.12
1:A:375:VAL:HG21	1:A:405:LEU:HG	1.33	1.11
1:C:699:ARG:HG3	1:C:699:ARG:HH11	1.09	1.10
1:F:699:ARG:HH11	1:F:699:ARG:HG3	1.08	1.09

There are no symmetry-related clashes.

## 5.3 Torsion angles [i](#)

### 5.3.1 Protein backbone [i](#)

In the following table, the Percentiles column shows the percent Ramachandran outliers of the chain as a percentile score with respect to all X-ray entries followed by that with respect to entries of similar resolution.

The Analysed column shows the number of residues for which the backbone conformation was analysed, and the total number of residues.

Mol	Chain	Analysed	Favoured	Allowed	Outliers	Percentiles	
1	A	999/1052 (95%)	830 (83%)	123 (12%)	46 (5%)	2	14
1	B	1028/1052 (98%)	863 (84%)	147 (14%)	18 (2%)	8	37
1	C	1028/1052 (98%)	859 (84%)	143 (14%)	26 (2%)	5	28
1	D	990/1052 (94%)	820 (83%)	132 (13%)	38 (4%)	3	18
1	E	1006/1052 (96%)	847 (84%)	141 (14%)	18 (2%)	8	37
1	F	1028/1052 (98%)	866 (84%)	136 (13%)	26 (2%)	5	28
All	All	6079/6312 (96%)	5085 (84%)	822 (14%)	172 (3%)	5	25



5 of 172 Ramachandran outliers are listed below:

Mol	Chain	Res	Type
1	A	62	VAL
1	A	134	LYS
1	A	203	VAL
1	A	204	SER
1	A	498	LYS

### 5.3.2 Protein sidechains [i](#)

In the following table, the Percentiles column shows the percent sidechain outliers of the chain as a percentile score with respect to all X-ray entries followed by that with respect to entries of similar resolution.

The Analysed column shows the number of residues for which the sidechain conformation was analysed, and the total number of residues.

Mol	Chain	Analysed	Rotameric	Outliers	Percentiles	
1	A	823/860 (96%)	697 (85%)	126 (15%)	2	13
1	B	841/860 (98%)	736 (88%)	105 (12%)	4	20
1	C	841/860 (98%)	755 (90%)	86 (10%)	7	28
1	D	816/860 (95%)	695 (85%)	121 (15%)	3	14
1	E	829/860 (96%)	727 (88%)	102 (12%)	4	21
1	F	841/860 (98%)	751 (89%)	90 (11%)	6	26
All	All	4991/5160 (97%)	4361 (87%)	630 (13%)	4	20

5 of 630 residues with a non-rotameric sidechain are listed below:

Mol	Chain	Res	Type
1	E	135	ASN
1	F	367	ILE
1	E	324	VAL
1	E	133	VAL
1	E	801	ASN

Sometimes sidechains can be flipped to improve hydrogen bonding and reduce clashes. 5 of 158 such sidechains are listed below:

Mol	Chain	Res	Type
1	E	67	GLN
1	F	67	GLN

*Continued on next page...*

*Continued from previous page...*

Mol	Chain	Res	Type
1	E	156	ASN
1	E	312	ASN
1	F	437	GLN

### 5.3.3 RNA [i](#)

There are no RNA molecules in this entry.

### 5.4 Non-standard residues in protein, DNA, RNA chains [i](#)

There are no non-standard protein/DNA/RNA residues in this entry.

### 5.5 Carbohydrates [i](#)

There are no monosaccharides in this entry.

### 5.6 Ligand geometry [i](#)

8 ligands are modelled in this entry.

In the following table, the Counts columns list the number of bonds (or angles) for which Mogul statistics could be retrieved, the number of bonds (or angles) that are observed in the model and the number of bonds (or angles) that are defined in the Chemical Component Dictionary. The Link column lists molecule types, if any, to which the group is linked. The Z score for a bond length (or angle) is the number of standard deviations the observed value is removed from the expected value. A bond length (or angle) with  $|Z| > 2$  is considered an outlier worth inspection. RMSZ is the root-mean-square of all Z scores of the bond lengths (or angles).

Mol	Type	Chain	Res	Link	Bond lengths			Bond angles		
					Counts	RMSZ	# Z  > 2	Counts	RMSZ	# Z  > 2
2	LMT	B	2032	-	36,36,36	0.76	1 (2%)	47,47,47	2.01	9 (19%)
2	LMT	D	2026	-	36,36,36	0.71	1 (2%)	47,47,47	1.76	8 (17%)
2	LMT	A	2026	-	36,36,36	0.57	0	47,47,47	1.44	6 (12%)
2	LMT	E	2031	-	36,36,36	0.89	1 (2%)	47,47,47	1.81	9 (19%)
2	LMT	B	2033	-	36,36,36	1.19	3 (8%)	47,47,47	3.63	19 (40%)
2	LMT	E	2033	-	36,36,36	1.11	4 (11%)	47,47,47	3.55	18 (38%)
2	LMT	E	2032	-	36,36,36	0.62	1 (2%)	47,47,47	1.40	5 (10%)
2	LMT	B	2031	-	36,36,36	0.97	1 (2%)	47,47,47	1.42	9 (19%)

In the following table, the Chirals column lists the number of chiral outliers, the number of chiral centers analysed, the number of these observed in the model and the number defined in the Chemical Component Dictionary. Similar counts are reported in the Torsion and Rings columns. '-' means no outliers of that kind were identified.

Mol	Type	Chain	Res	Link	Chirals	Torsions	Rings
2	LMT	B	2032	-	-	0/21/61/61	0/2/2/2
2	LMT	D	2026	-	-	4/21/61/61	0/2/2/2
2	LMT	A	2026	-	-	6/21/61/61	0/2/2/2
2	LMT	E	2031	-	-	1/21/61/61	0/2/2/2
2	LMT	B	2033	-	-	7/21/61/61	0/2/2/2
2	LMT	E	2033	-	-	7/21/61/61	0/2/2/2
2	LMT	E	2032	-	-	5/21/61/61	0/2/2/2
2	LMT	B	2031	-	-	1/21/61/61	0/2/2/2

The worst 5 of 12 bond length outliers are listed below:

Mol	Chain	Res	Type	Atoms	Z	Observed(Å)	Ideal(Å)
2	B	2033	LMT	O1'-C1'	4.28	1.47	1.40
2	E	2033	LMT	O1'-C1'	3.77	1.46	1.40
2	B	2032	LMT	O1'-C1'	3.68	1.46	1.40
2	B	2031	LMT	O1'-C1'	3.41	1.46	1.40
2	E	2031	LMT	O1'-C1'	3.16	1.45	1.40

The worst 5 of 83 bond angle outliers are listed below:

Mol	Chain	Res	Type	Atoms	Z	Observed(°)	Ideal(°)
2	B	2033	LMT	C1-O1'-C1'	14.36	137.65	113.84
2	E	2033	LMT	C1-O1'-C1'	13.64	136.47	113.84
2	B	2033	LMT	C1B-O1B-C4'	-10.03	93.14	117.96
2	E	2033	LMT	C1B-O1B-C4'	-9.66	94.06	117.96
2	B	2033	LMT	C3'-C4'-C5'	-7.90	92.81	110.93

There are no chirality outliers.

5 of 31 torsion outliers are listed below:

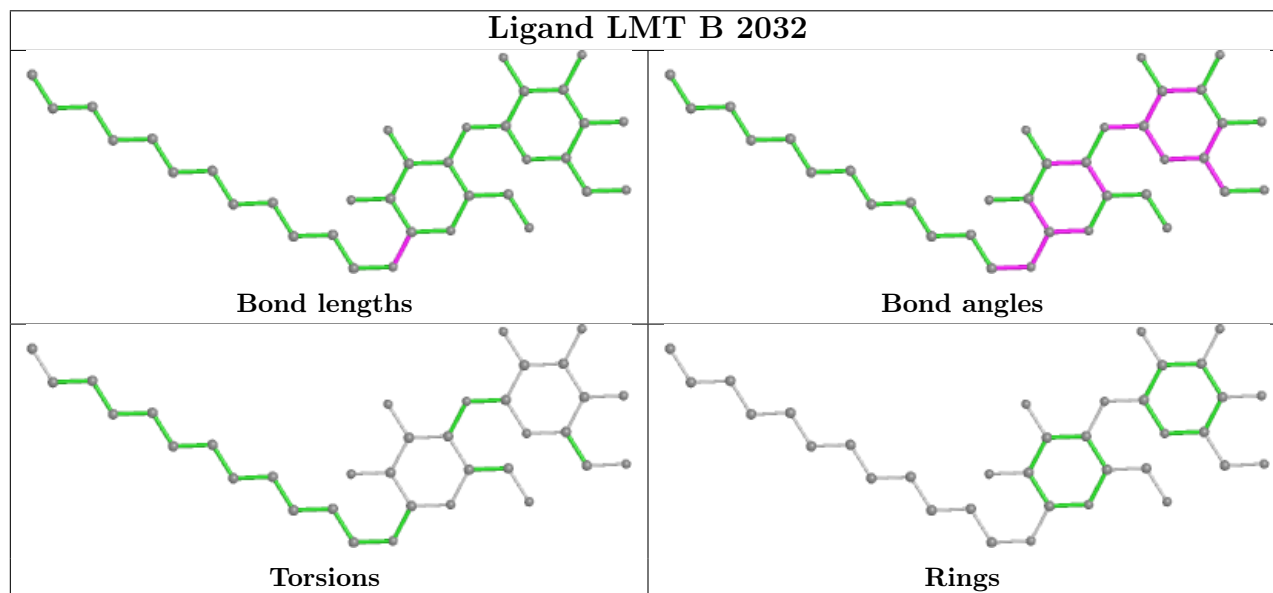
Mol	Chain	Res	Type	Atoms
2	A	2026	LMT	O5'-C1'-O1'-C1
2	B	2033	LMT	O5'-C1'-O1'-C1
2	B	2033	LMT	C2-C1-O1'-C1'
2	D	2026	LMT	C2'-C1'-O1'-C1
2	D	2026	LMT	O5'-C1'-O1'-C1

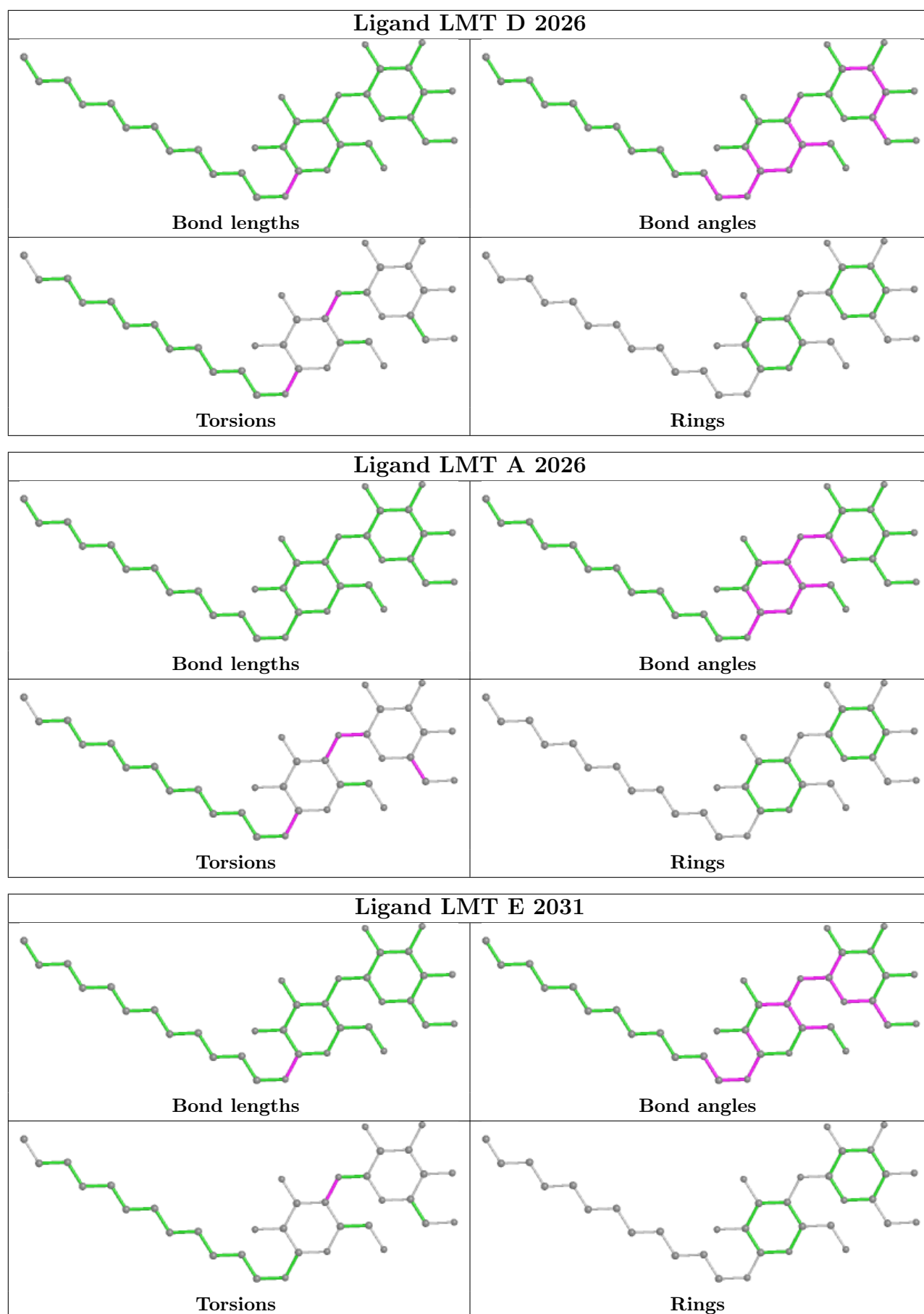
There are no ring outliers.

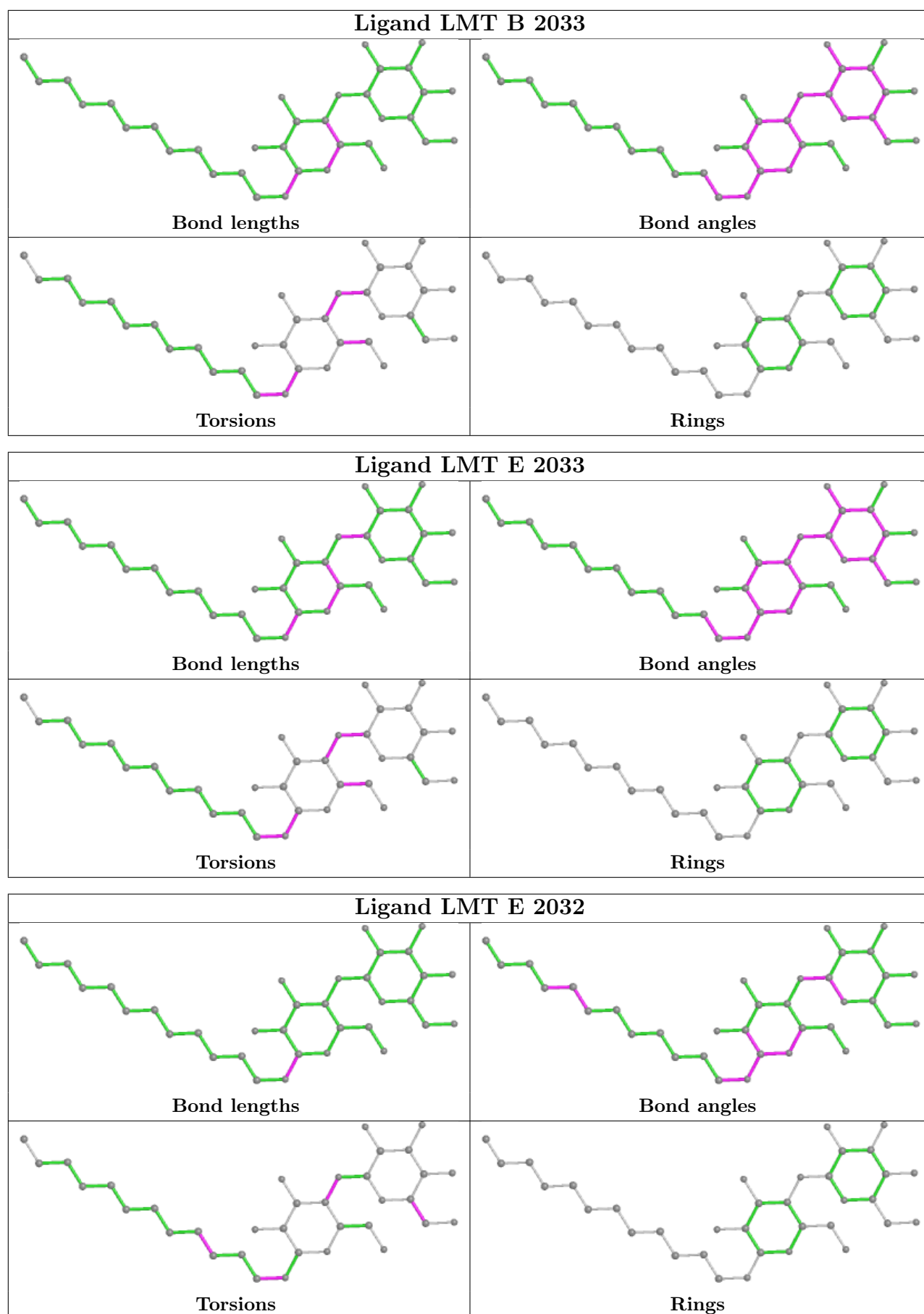
8 monomers are involved in 54 short contacts:

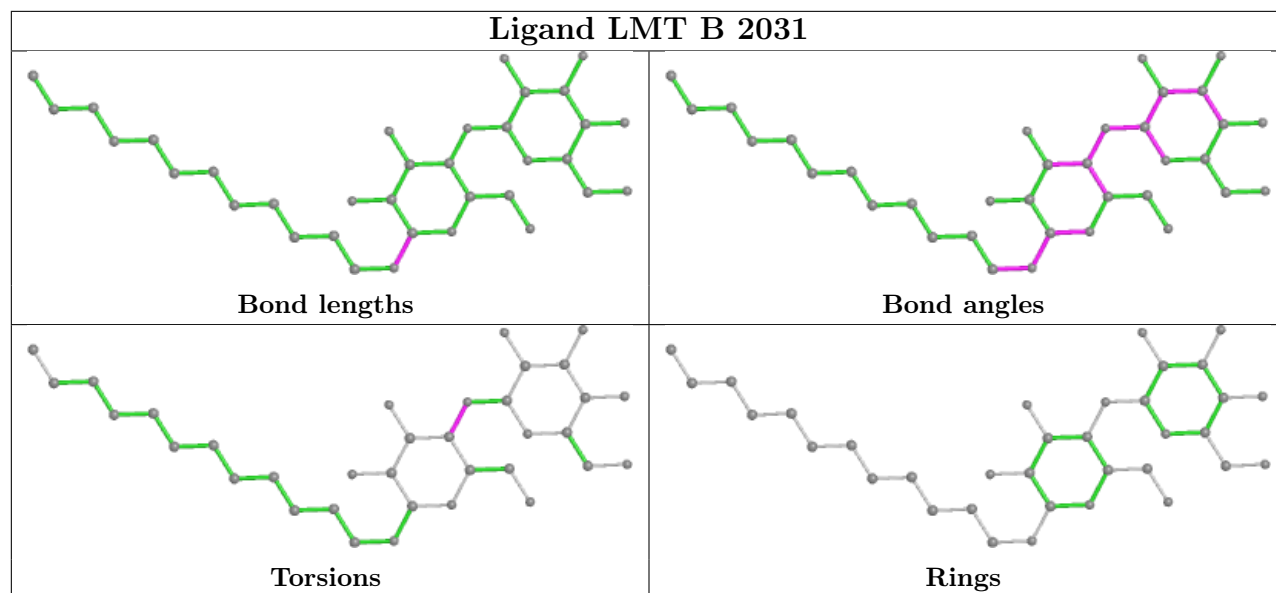
Mol	Chain	Res	Type	Clashes	Symm-Clashes
2	B	2032	LMT	4	0
2	D	2026	LMT	5	0
2	A	2026	LMT	10	0
2	E	2031	LMT	4	0
2	B	2033	LMT	8	0
2	E	2033	LMT	10	0
2	E	2032	LMT	8	0
2	B	2031	LMT	5	0

The following is a two-dimensional graphical depiction of Mogul quality analysis of bond lengths, bond angles, torsion angles, and ring geometry for all instances of the Ligand of Interest. In addition, ligands with molecular weight > 250 and outliers as shown on the validation Tables will also be included. For torsion angles, if less than 5% of the Mogul distribution of torsion angles is within 10 degrees of the torsion angle in question, then that torsion angle is considered an outlier. Any bond that is central to one or more torsion angles identified as an outlier by Mogul will be highlighted in the graph. For rings, the root-mean-square deviation (RMSD) between the ring in question and similar rings identified by Mogul is calculated over all ring torsion angles. If the average RMSD is greater than 60 degrees and the minimal RMSD between the ring in question and any Mogul-identified rings is also greater than 60 degrees, then that ring is considered an outlier. The outliers are highlighted in purple. The color gray indicates Mogul did not find sufficient equivalents in the CSD to analyse the geometry.









## 5.7 Other polymers [i](#)

There are no such residues in this entry.

## 5.8 Polymer linkage issues [i](#)

There are no chain breaks in this entry.

## 6 Fit of model and data [i](#)

### 6.1 Protein, DNA and RNA chains [i](#)

In the following table, the column labelled ‘#RSRZ> 2’ contains the number (and percentage) of RSRZ outliers, followed by percent RSRZ outliers for the chain as percentile scores relative to all X-ray entries and entries of similar resolution. The OWAB column contains the minimum, median, 95<sup>th</sup> percentile and maximum values of the occupancy-weighted average B-factor per residue. The column labelled ‘Q< 0.9’ lists the number of (and percentage) of residues with an average occupancy less than 0.9.

Mol	Chain	Analysed	<RSRZ>	#RSRZ>2	OWAB(Å <sup>2</sup> )	Q<0.9
1	A	1004/1052 (95%)	-0.24	10 (0%) 82 59	54, 91, 132, 178	0
1	B	1030/1052 (97%)	-0.13	22 (2%) 63 34	53, 91, 143, 188	0
1	C	1028/1052 (97%)	-0.07	45 (4%) 34 13	58, 101, 178, 238	0
1	D	998/1052 (94%)	-0.28	19 (1%) 66 37	58, 91, 134, 179	0
1	E	1012/1052 (96%)	-0.15	38 (3%) 40 16	55, 93, 143, 189	0
1	F	1030/1052 (97%)	-0.09	46 (4%) 33 12	59, 100, 177, 238	0
All	All	6102/6312 (96%)	-0.16	180 (2%) 51 23	53, 94, 153, 238	0

The worst 5 of 180 RSRZ outliers are listed below:

Mol	Chain	Res	Type	RSRZ
1	F	803	PHE	7.4
1	E	260	VAL	6.6
1	E	251	LEU	6.0
1	C	778	ALA	6.0
1	F	753	TRP	5.3

### 6.2 Non-standard residues in protein, DNA, RNA chains [i](#)

There are no non-standard protein/DNA/RNA residues in this entry.

### 6.3 Carbohydrates [i](#)

There are no monosaccharides in this entry.

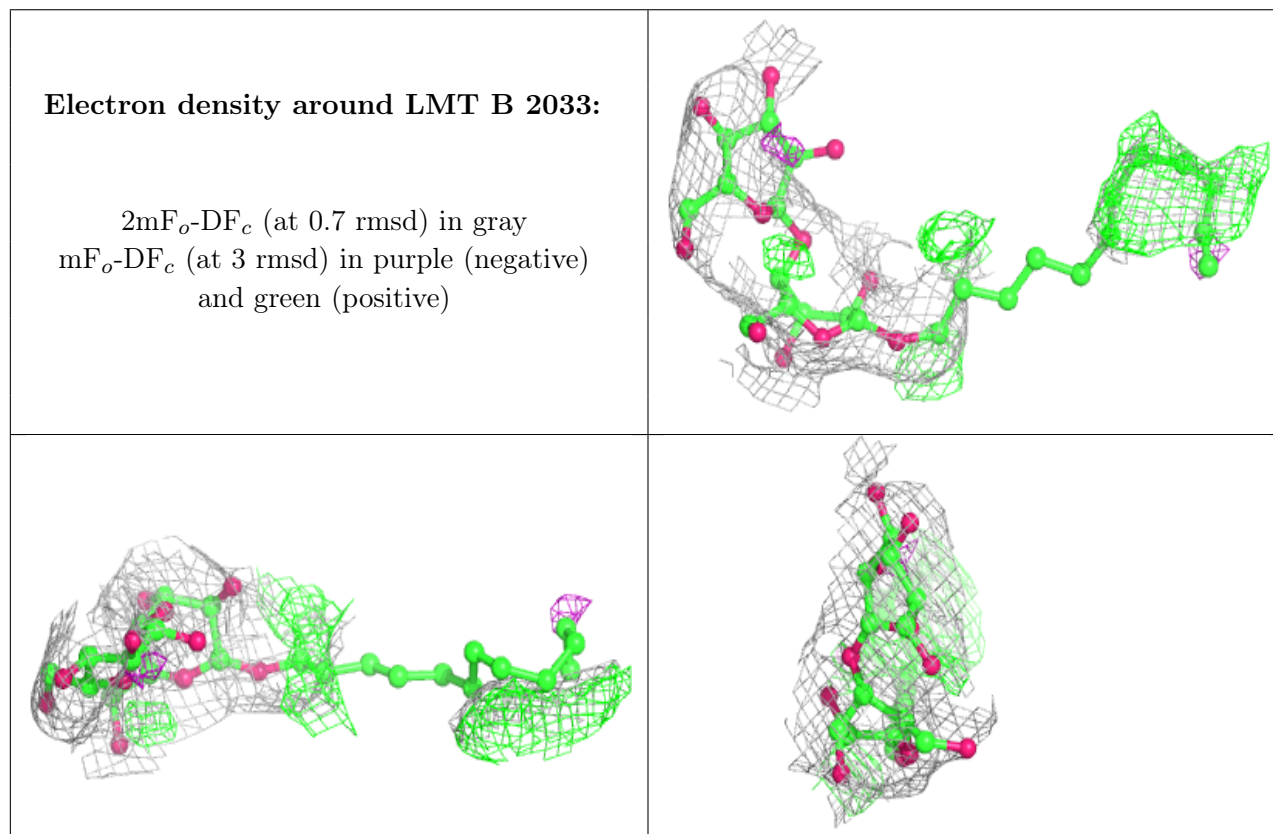


## 6.4 Ligands [i](#)

In the following table, the Atoms column lists the number of modelled atoms in the group and the number defined in the chemical component dictionary. The B-factors column lists the minimum, median, 95<sup>th</sup> percentile and maximum values of B factors of atoms in the group. The column labelled 'Q<0.9' lists the number of atoms with occupancy less than 0.9.

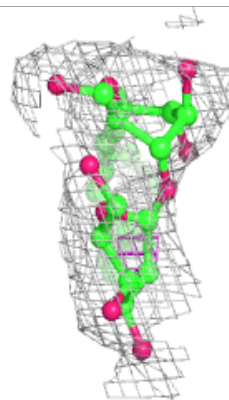
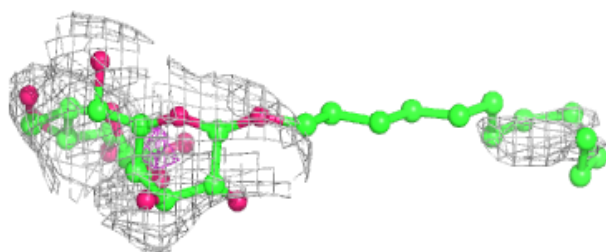
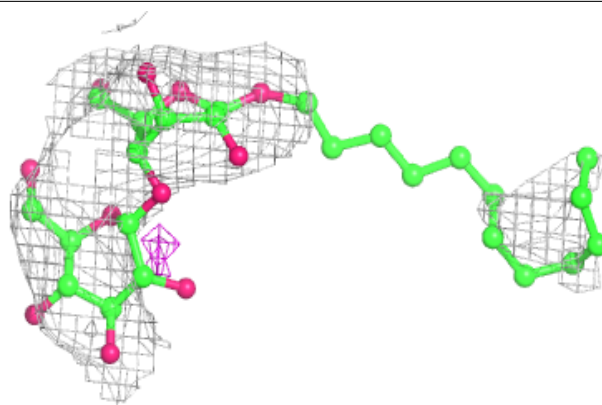
Mol	Type	Chain	Res	Atoms	RSCC	RSR	B-factors(Å <sup>2</sup> )	Q<0.9
2	LMT	B	2033	35/35	0.72	0.42	100,155,176,183	0
2	LMT	E	2033	35/35	0.76	0.33	111,146,174,179	0
2	LMT	E	2031	35/35	0.85	0.23	72,95,121,130	0
2	LMT	B	2031	35/35	0.90	0.20	59,82,109,114	0
2	LMT	A	2026	35/35	0.90	0.21	80,110,145,173	0
2	LMT	D	2026	35/35	0.91	0.16	75,113,140,142	0
2	LMT	E	2032	35/35	0.93	0.23	66,90,115,128	0
2	LMT	B	2032	35/35	0.93	0.25	52,70,157,169	0

The following is a graphical depiction of the model fit to experimental electron density of all instances of the Ligand of Interest. In addition, ligands with molecular weight > 250 and outliers as shown on the geometry validation Tables will also be included. Each fit is shown from different orientation to approximate a three-dimensional view.

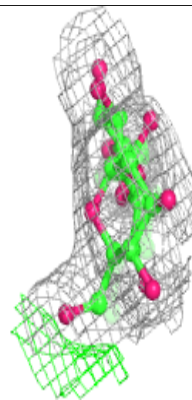
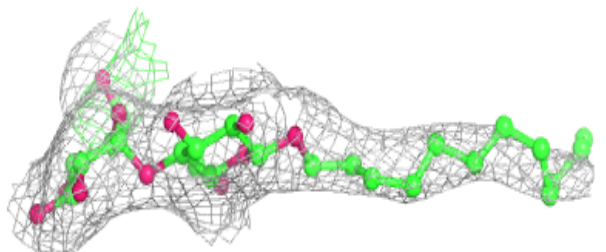
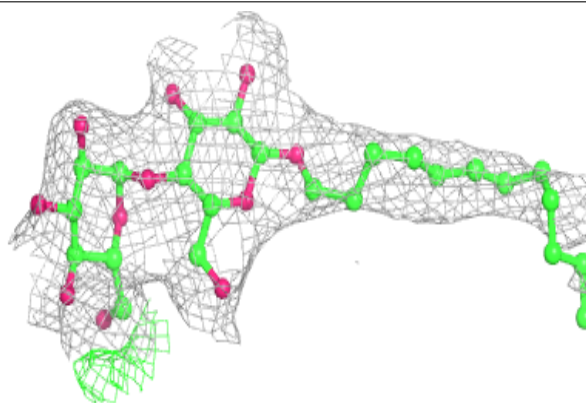


**Electron density around LMT E 2033:**

$2mF_o-DF_c$  (at 0.7 rmsd) in gray  
 $mF_o-DF_c$  (at 3 rmsd) in purple (negative)  
and green (positive)

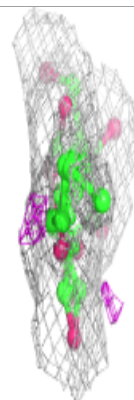
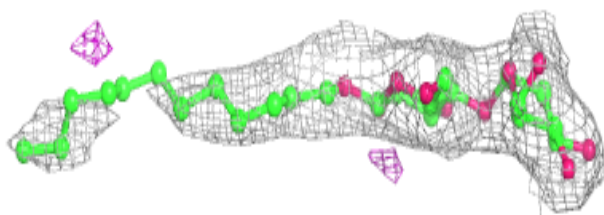
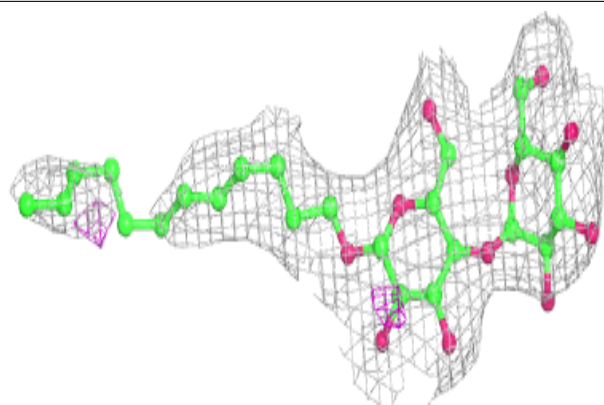
**Electron density around LMT E 2031:**

$2mF_o-DF_c$  (at 0.7 rmsd) in gray  
 $mF_o-DF_c$  (at 3 rmsd) in purple (negative)  
and green (positive)

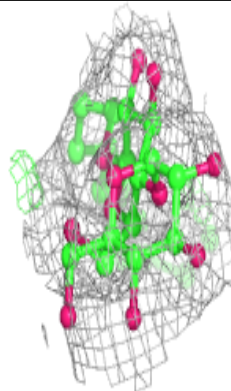
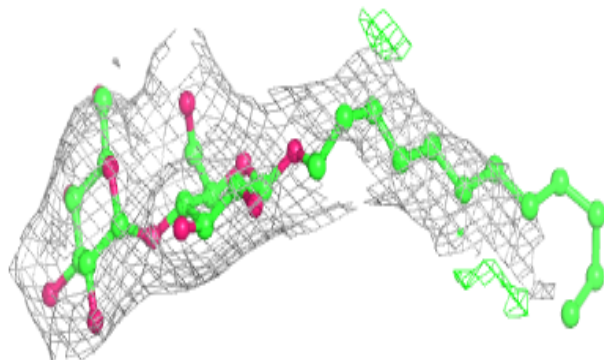
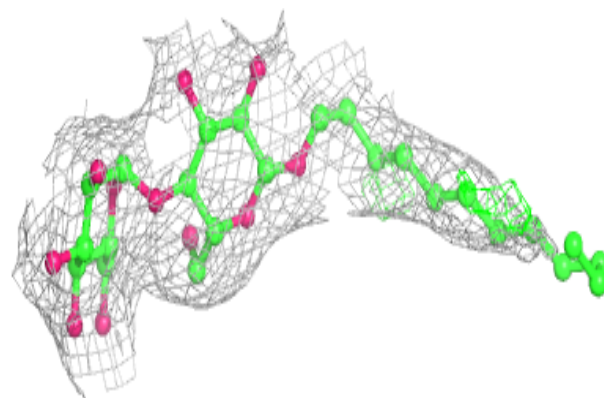


**Electron density around LMT B 2031:**

$2mF_o-DF_c$  (at 0.7 rmsd) in gray  
 $mF_o-DF_c$  (at 3 rmsd) in purple (negative)  
and green (positive)

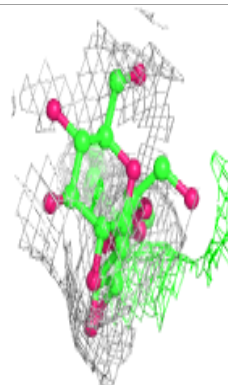
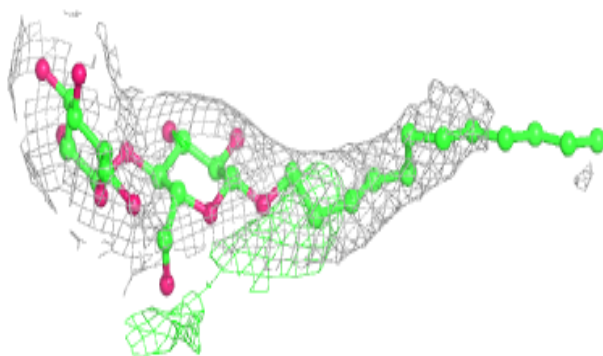
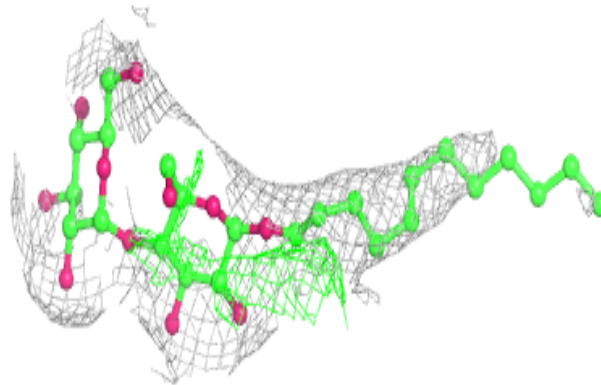
**Electron density around LMT A 2026:**

$2mF_o-DF_c$  (at 0.7 rmsd) in gray  
 $mF_o-DF_c$  (at 3 rmsd) in purple (negative)  
and green (positive)

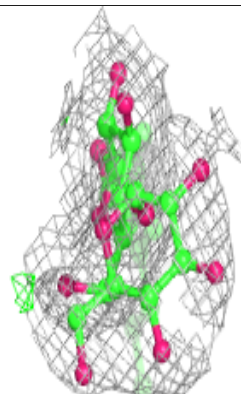
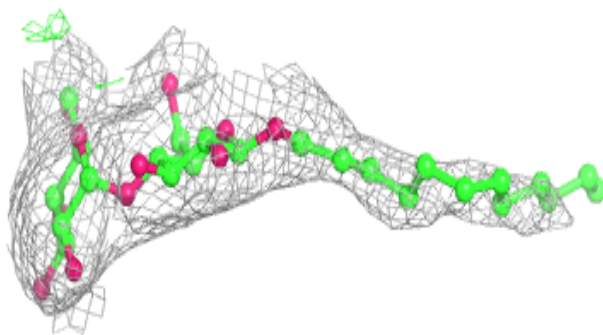
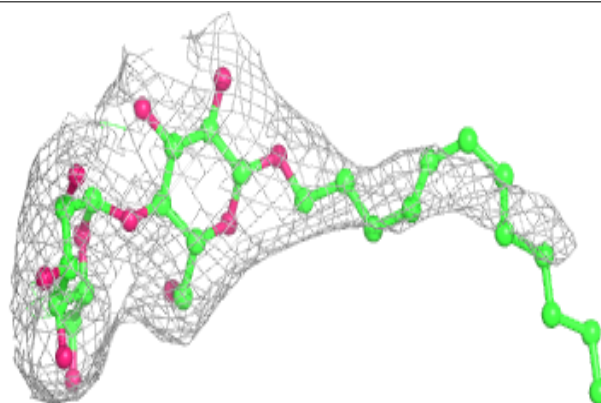


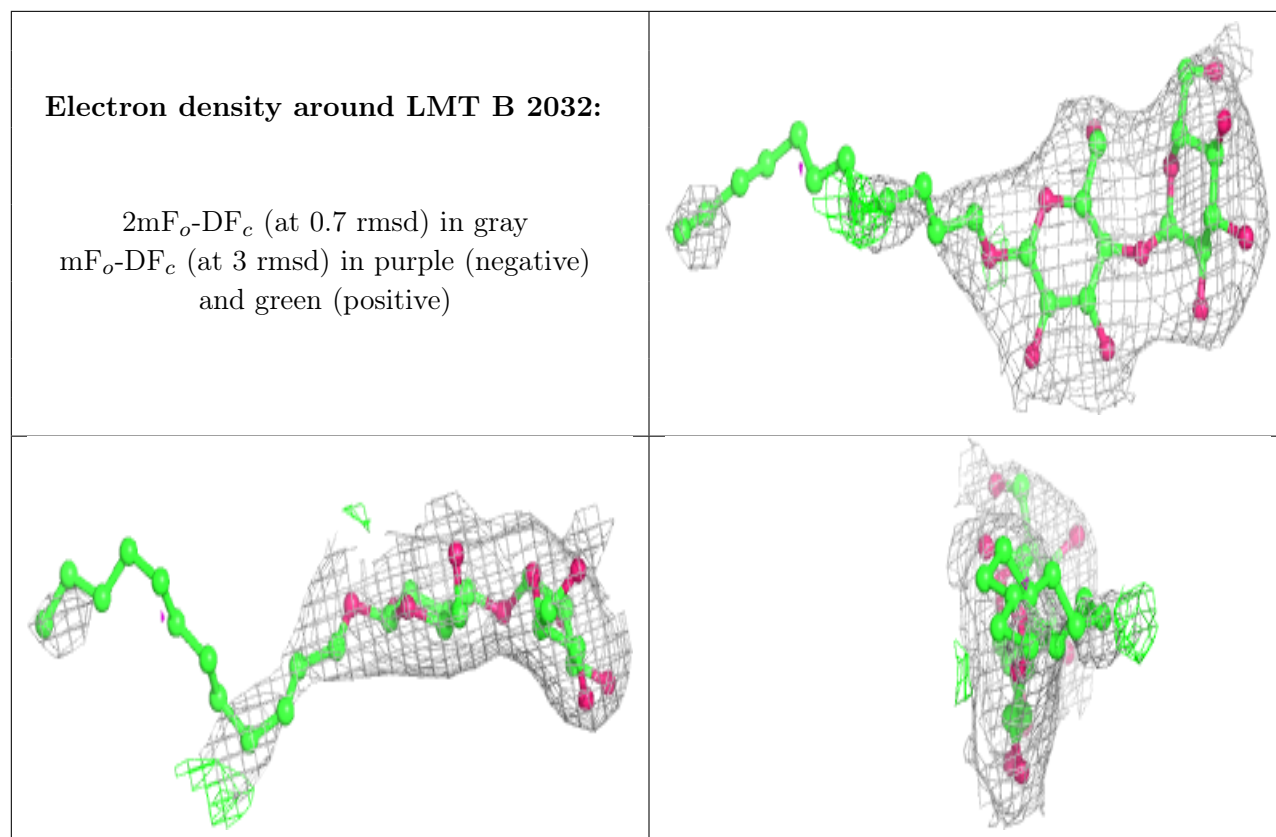
**Electron density around LMT D 2026:**

$2mF_o-DF_c$  (at 0.7 rmsd) in gray  
 $mF_o-DF_c$  (at 3 rmsd) in purple (negative)  
and green (positive)

**Electron density around LMT E 2032:**

$2mF_o-DF_c$  (at 0.7 rmsd) in gray  
 $mF_o-DF_c$  (at 3 rmsd) in purple (negative)  
and green (positive)





## 6.5 Other polymers [i](#)

There are no such residues in this entry.