



Full wwPDB EM Validation Report ⓘ

Nov 23, 2022 – 12:07 PM JST

PDB ID : 7VAN
EMDB ID : EMD-31853
Title : V1EG of V/A-ATPase from *Thermus thermophilus*, high ATP, state2-1
Authors : Kishikawa, J.; Nakanishi, A.; Nakano, A.; Saeki, S.; Furuta, A.; Kato, T.; Mitsuoka, K.; Yokoyama, K.
Deposited on : 2021-08-30
Resolution : 3.00 Å(reported)

This is a Full wwPDB EM Validation Report for a publicly released PDB entry.

We welcome your comments at validation@mail.wwpdb.org

A user guide is available at

<https://www.wwpdb.org/validation/2017/EMValidationReportHelp>

with specific help available everywhere you see the ⓘ symbol.

The types of validation reports are described at

<http://www.wwpdb.org/validation/2017/FAQs#types>.

The following versions of software and data (see [references ⓘ](#)) were used in the production of this report:

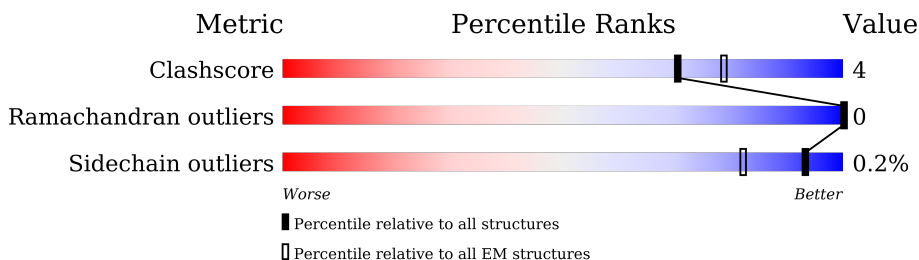
EMDB validation analysis : 0.0.1.dev43
Mogul : 1.8.5 (274361), CSD as541be (2020)
MolProbity : 4.02b-467
buster-report : 1.1.7 (2018)
Percentile statistics : 20191225.v01 (using entries in the PDB archive December 25th 2019)
MapQ : 1.9.9
Ideal geometry (proteins) : Engh & Huber (2001)
Ideal geometry (DNA, RNA) : Parkinson et al. (1996)
Validation Pipeline (wwPDB-VP) : 2.31.3

1 Overall quality at a glance

The following experimental techniques were used to determine the structure:
ELECTRON MICROSCOPY

The reported resolution of this entry is 3.00 Å.

Percentile scores (ranging between 0-100) for global validation metrics of the entry are shown in the following graphic. The table shows the number of entries on which the scores are based.



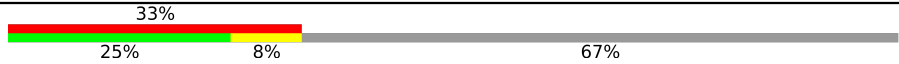

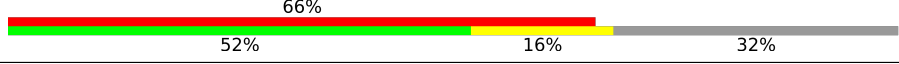

Metric	Whole archive (#Entries)	EM structures (#Entries)
Clashscore	158937	4297
Ramachandran outliers	154571	4023
Sidechain outliers	154315	3826

The table below summarises the geometric issues observed across the polymeric chains and their fit to the map. The red, orange, yellow and green segments of the bar indicate the fraction of residues that contain outliers for ≥ 3 , 2, 1 and 0 types of geometric quality criteria respectively. A grey segment represents the fraction of residues that are not modelled. The numeric value for each fraction is indicated below the corresponding segment, with a dot representing fractions $\leq 5\%$. The upper red bar (where present) indicates the fraction of residues that have poor fit to the EM map (all-atom inclusion $< 40\%$). The numeric value is given above the bar.

Mol	Chain	Length	Quality of chain
1	A	578	
1	B	578	
1	C	578	
2	D	478	
2	E	478	
2	F	478	
3	G	223	
4	H	104	

Continued on next page...

Continued from previous page...

Mol	Chain	Length	Quality of chain
5	I	120	
5	K	120	
6	J	188	
6	L	188	

2 Entry composition [i](#)

There are 10 unique types of molecules in this entry. The entry contains 29558 atoms, of which 0 are hydrogens and 0 are deuteriums.

In the tables below, the AltConf column contains the number of residues with at least one atom in alternate conformation and the Trace column contains the number of residues modelled with at most 2 atoms.

- Molecule 1 is a protein called V-type ATP synthase alpha chain.

Mol	Chain	Residues	Atoms					AltConf	Trace
			Total	C	N	O	S		
1	A	578	4475	2856	763	834	22	0	0
1	B	578	4475	2856	763	834	22	0	0
1	C	578	4475	2856	763	834	22	0	0

There are 6 discrepancies between the modelled and reference sequences:

Chain	Residue	Modelled	Actual	Comment	Reference
A	232	ALA	SER	conflict	UNP Q56403
A	235	SER	THR	conflict	UNP Q56403
B	232	ALA	SER	conflict	UNP Q56403
B	235	SER	THR	conflict	UNP Q56403
C	232	ALA	SER	conflict	UNP Q56403
C	235	SER	THR	conflict	UNP Q56403

- Molecule 2 is a protein called V-type ATP synthase beta chain.

Mol	Chain	Residues	Atoms					AltConf	Trace
			Total	C	N	O	S		
2	D	470	3682	2334	636	702	10	0	0
2	E	468	3668	2325	633	700	10	0	0
2	F	471	3694	2342	637	705	10	0	0

- Molecule 3 is a protein called V-type ATP synthase subunit D.

Mol	Chain	Residues	Atoms					AltConf	Trace
			Total	C	N	O	S		
3	G	206	1619	1021	302	294	2	0	0

- Molecule 4 is a protein called V-type ATP synthase subunit F.

Mol	Chain	Residues	Atoms					AltConf	Trace
			Total	C	N	O	S		
4	H	104	792	501	136	152	3	0	0

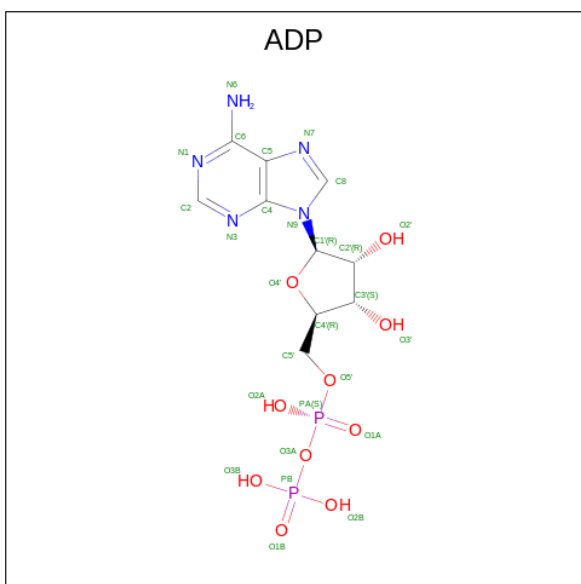
- Molecule 5 is a protein called V-type ATP synthase, subunit G.

Mol	Chain	Residues	Atoms					AltConf	Trace
			Total	C	N	O	S		
5	I	40	313	196	58	58	1	0	0
5	K	40	313	196	58	58	1	0	0

- Molecule 6 is a protein called V-type ATP synthase subunit E.

Mol	Chain	Residues	Atoms				AltConf	Trace
			Total	C	N	O		
6	J	127	976	610	183	183	0	0
6	L	128	980	612	184	184	0	0

- Molecule 7 is ADENOSINE-5'-DIPHOSPHATE (three-letter code: ADP) (formula: $C_{10}H_{15}N_5O_{10}P_2$) (labeled as "Ligand of Interest" by depositor).

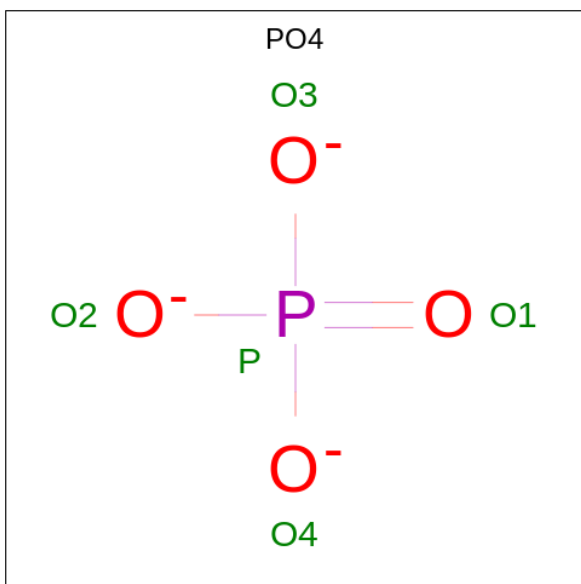


Mol	Chain	Residues	Atoms					AltConf
			Total	C	N	O	P	
7	A	1	27	10	5	10	2	0

- Molecule 8 is MAGNESIUM ION (three-letter code: MG) (formula: Mg) (labeled as "Ligand of Interest" by depositor).

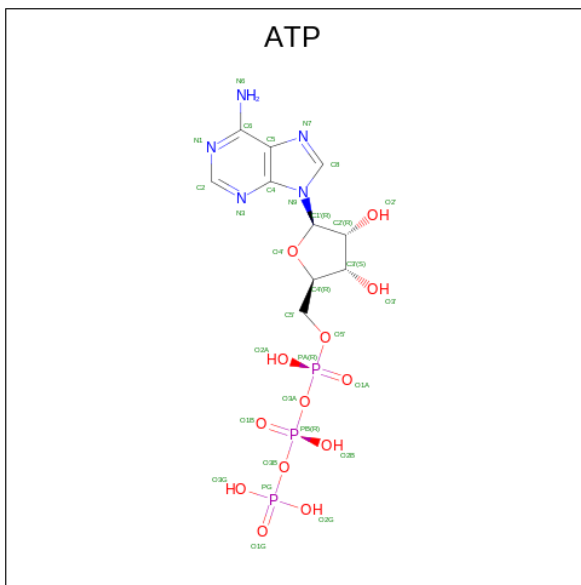
Mol	Chain	Residues	Atoms		AltConf
8	A	1	Total	Mg	0
			1	1	
8	C	1	Total	Mg	0
			1	1	

- Molecule 9 is PHOSPHATE ION (three-letter code: PO4) (formula: O₄P) (labeled as "Ligand of Interest" by depositor).



Mol	Chain	Residues	Atoms			AltConf
9	A	1	Total	O	P	0
			5	4	1	

- Molecule 10 is ADENOSINE-5'-TRIPHOSPHATE (three-letter code: ATP) (formula: C₁₀H₁₆N₅O₁₃P₃) (labeled as "Ligand of Interest" by depositor).

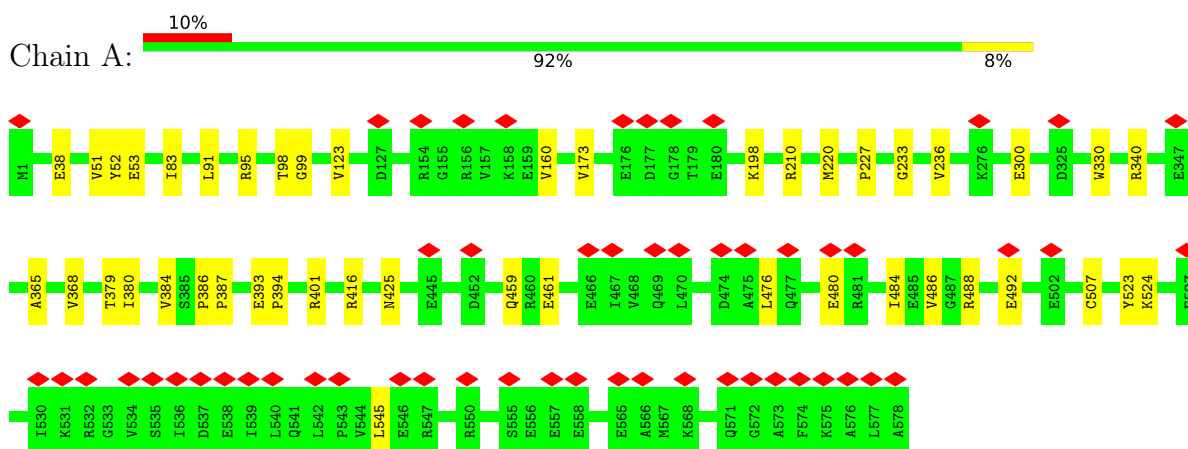


Mol	Chain	Residues	Atoms					AltConf
			Total	C	N	O	P	
10	B	1	31	10	5	13	3	0
10	C	1	31	10	5	13	3	0

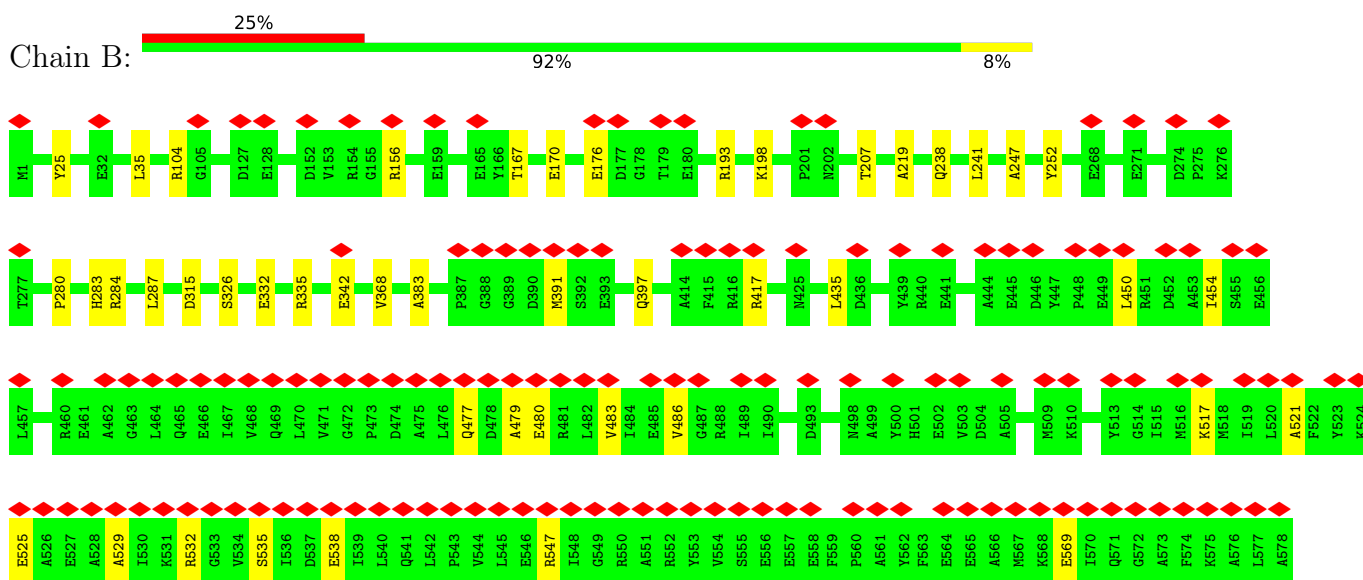
3 Residue-property plots

These plots are drawn for all protein, RNA, DNA and oligosaccharide chains in the entry. The first graphic for a chain summarises the proportions of the various outlier classes displayed in the second graphic. The second graphic shows the sequence view annotated by issues in geometry and atom inclusion in map density. Residues are color-coded according to the number of geometric quality criteria for which they contain at least one outlier: green = 0, yellow = 1, orange = 2 and red = 3 or more. A red diamond above a residue indicates a poor fit to the EM map for this residue (all-atom inclusion < 40%). Stretches of 2 or more consecutive residues without any outlier are shown as a green connector. Residues present in the sample, but not in the model, are shown in grey.

- Molecule 1: V-type ATP synthase alpha chain

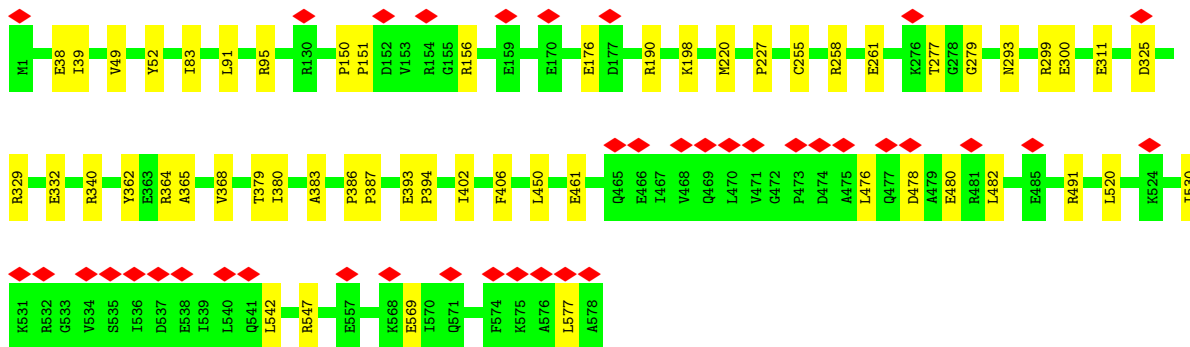


- Molecule 1: V-type ATP synthase alpha chain

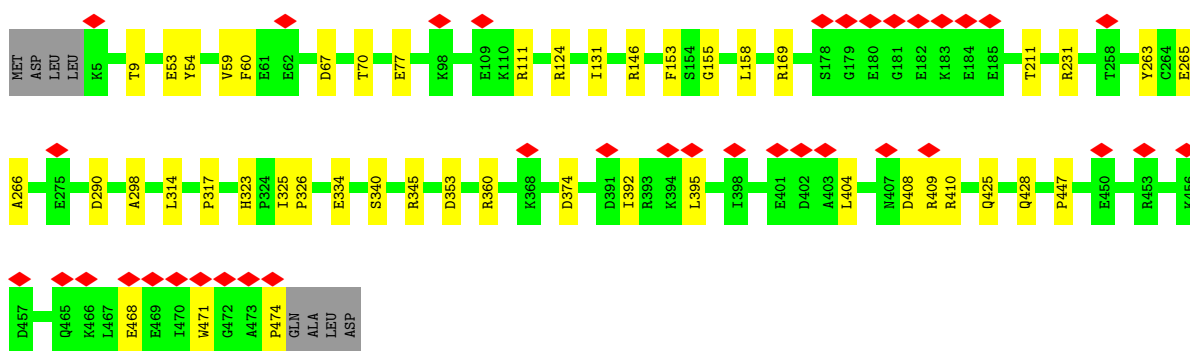
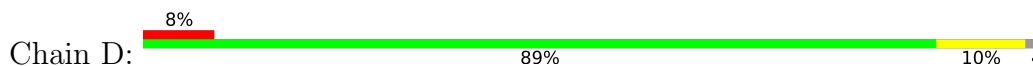


- Molecule 1: V-type ATP synthase alpha chain

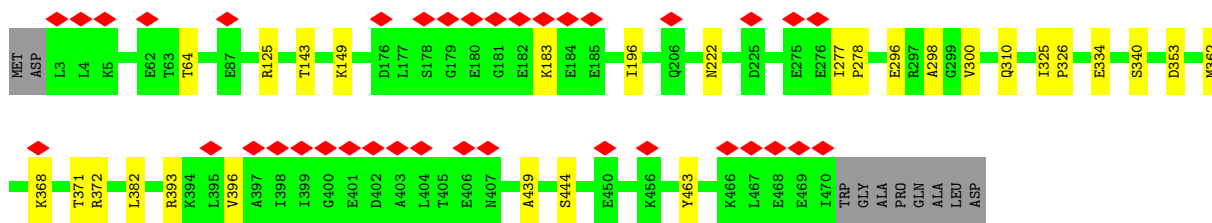
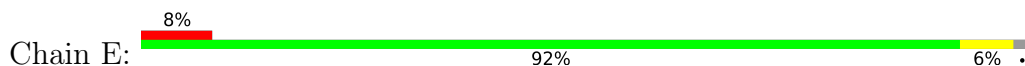




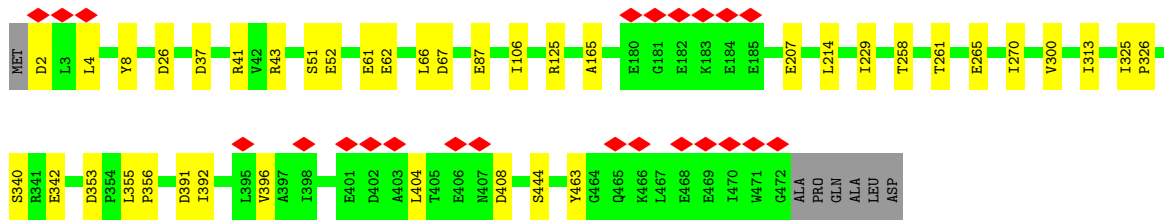
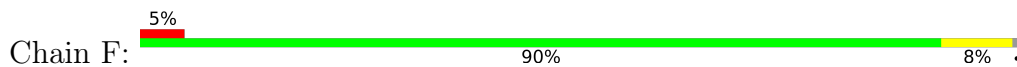
• Molecule 2: V-type ATP synthase beta chain



• Molecule 2: V-type ATP synthase beta chain



• Molecule 2: V-type ATP synthase beta chain



• Molecule 3: V-type ATP synthase subunit D



MET SER LYS LEU GLU ALA ILE LEU SER GLN VAL GLU ALA ILE GLN ALA LEU LEU GLN ALA LYS ARG GLU LYS ALA ALA VAL VAL LYS ARG GLU LYS ALA ALA LEU GLN ARG GLU ALA LEU GLU ALA TYR ARG ALA LEU ARG ALA

E61 S62 A63 G64 E65 L66 L67 V68 A69 T70 A71 R72 T73 Q74 A75 R76 G77 E78 V79 L80 E81 E82 V83 R84 R85 R86 V87 R88 E89 A90 L91 E92 A93 L94 P95 Q96 K97 P98 E99 W100 P101 E102 V103 V104 R105 K106 L107 A108 L109 E110 A111 L112 E113 A114 L115 P116 G117 A118 K119 A120

L121 V122 A123 N124 P125 E126 D127 L128 P129 H130 L131 E132 A133 L134 A135 R136 E137 R138 G139 V140 E141 L142 Q143 A144 E145 P146 A147 L148 R149 L150 G151 V152 R153 A154 V155 G156 A157 E158 G159 K160 T161 Q162 V163 E164 N165 S166 L167 L168 A169 R170 R171 D172 R173 A174 W175 D176 A177 L178 S179 A180

K181 V182 A183 Q184 A185 L186 W187 GLY

• Molecule 6: V-type ATP synthase subunit E



MET SER LYS LEU GLU ALA ILE LEU SER GLN VAL GLU ALA ILE GLN ALA LEU LEU GLN ALA LYS ARG GLU LYS ALA ALA VAL VAL LYS ARG GLU LYS ALA ALA LEU GLN ARG GLU ALA LEU GLU ALA TYR ARG ALA LEU ARG ALA

E61 S62 A63 G64 E65 L66 L67 V68 A69 T70 A71 R72 T73 Q74 A75 R76 G77 E78 V79 L80 E81 E82 W83 R84 R85 R86 W87 R88 E89 A90 L91 E92 A93 L94 P95 Q96 K97 P98 E99 W100 P101 E102 V103 V104 R105 K106 L107 A108 L109 E110 A111 L112 E113 A114 L115 P116 G117 A118 K119 A120

L121 V122 A123 N124 P125 E126 D127 L128 P129 H130 L131 E132 A133 L134 A135 R136 E137 R138 G139 V140 E141 L142 Q143 A144 E145 P146 A147 L148 R149 G151 V152 R153 A154 V155 G156 A157 E158 G159 K160 T161 Q162 V163 E164 N165 S166 L167 L168 A169 R170 L171 D172 R173 A174 W175 D176 A177 L178 S179 A180

K181 V182 A183 Q184 A185 L186 W187 G188

4 Experimental information

Property	Value	Source
EM reconstruction method	SINGLE PARTICLE	Depositor
Imposed symmetry	POINT, C1	Depositor
Number of particles used	29557	Depositor
Resolution determination method	FSC 0.143 CUT-OFF	Depositor
CTF correction method	PHASE FLIPPING AND AMPLITUDE CORRECTION	Depositor
Microscope	FEI TITAN KRIOS	Depositor
Voltage (kV)	300	Depositor
Electron dose ($e^-/\text{\AA}^2$)	50	Depositor
Minimum defocus (nm)	800	Depositor
Maximum defocus (nm)	2000	Depositor
Magnification	81000	Depositor
Image detector	GATAN K3 BIOQUANTUM (6k x 4k)	Depositor
Maximum map value	0.213	Depositor
Minimum map value	-0.093	Depositor
Average map value	0.000	Depositor
Map value standard deviation	0.009	Depositor
Recommended contour level	0.033	Depositor
Map size (Å)	264.0, 264.0, 264.0	wwPDB
Map dimensions	300, 300, 300	wwPDB
Map angles (°)	90.0, 90.0, 90.0	wwPDB
Pixel spacing (Å)	0.88, 0.88, 0.88	Depositor

5 Model quality [i](#)

5.1 Standard geometry [i](#)

Bond lengths and bond angles in the following residue types are not validated in this section: ADP, PO4, MG, ATP

The Z score for a bond length (or angle) is the number of standard deviations the observed value is removed from the expected value. A bond length (or angle) with $|Z| > 5$ is considered an outlier worth inspection. RMSZ is the root-mean-square of all Z scores of the bond lengths (or angles).

Mol	Chain	Bond lengths		Bond angles	
		RMSZ	# Z >5	RMSZ	# Z >5
1	A	0.33	0/4571	0.50	0/6202
1	B	0.31	0/4571	0.50	0/6202
1	C	0.34	0/4571	0.51	0/6202
2	D	0.33	0/3752	0.51	0/5081
2	E	0.34	0/3735	0.51	0/5056
2	F	0.34	0/3763	0.51	0/5095
3	G	0.28	0/1639	0.52	0/2205
4	H	0.25	0/803	0.50	0/1084
5	I	0.24	0/314	0.53	0/421
5	K	0.25	0/314	0.52	0/421
6	J	0.25	0/989	0.53	0/1342
6	L	0.24	0/993	0.56	0/1347
All	All	0.32	0/30015	0.51	0/40658

There are no bond length outliers.

There are no bond angle outliers.

There are no chirality outliers.

There are no planarity outliers.

5.2 Too-close contacts [i](#)

In the following table, the Non-H and H(model) columns list the number of non-hydrogen atoms and hydrogen atoms in the chain respectively. The H(added) column lists the number of hydrogen atoms added and optimized by MolProbity. The Clashes column lists the number of clashes within the asymmetric unit, whereas Symm-Clashes lists symmetry-related clashes.

Mol	Chain	Non-H	H(model)	H(added)	Clashes	Symm-Clashes
1	A	4475	0	4493	30	0

Continued on next page...

Continued from previous page...

Mol	Chain	Non-H	H(model)	H(added)	Clashes	Symm-Clashes
1	B	4475	0	4494	26	0
1	C	4475	0	4493	33	0
2	D	3682	0	3707	30	0
2	E	3668	0	3704	15	0
2	F	3694	0	3721	24	0
3	G	1619	0	1699	15	0
4	H	792	0	803	14	0
5	I	313	0	333	7	0
5	K	313	0	333	5	0
6	J	976	0	1007	20	0
6	L	980	0	1010	16	0
7	A	27	0	12	2	0
8	A	1	0	0	0	0
8	C	1	0	0	0	0
9	A	5	0	0	0	0
10	B	31	0	12	0	0
10	C	31	0	12	0	0
All	All	29558	0	29833	214	0

The all-atom clashscore is defined as the number of clashes found per 1000 atoms (including hydrogen atoms). The all-atom clashscore for this structure is 4.

All (214) close contacts within the same asymmetric unit are listed below, sorted by their clash magnitude.

Atom-1	Atom-2	Interatomic distance (Å)	Clash overlap (Å)
1:C:476:LEU:HD23	1:C:480:GLU:HB3	1.67	0.77
2:E:143:THR:HG22	2:E:362:MET:HG3	1.66	0.76
6:L:119:LYS:HB2	6:L:157:ALA:HA	1.68	0.75
6:J:125:PRO:HA	6:J:128:LEU:HD13	1.69	0.74
2:D:468:GLU:HA	2:D:471:TRP:HB3	1.71	0.72
1:B:477:GLN:HE22	1:B:479:ALA:HB3	1.55	0.71
1:C:190:ARG:NH2	1:C:300:GLU:OE2	2.24	0.71
1:C:450:LEU:HD12	1:C:520:LEU:HD12	1.72	0.71
1:A:220:MET:O	1:A:379:THR:OG1	2.08	0.71
1:A:160:VAL:HG12	1:A:173:VAL:HG22	1.73	0.71
1:A:198:LYS:HD3	1:A:368:VAL:HG12	1.74	0.68
2:D:471:TRP:HA	2:D:474:PRO:HG3	1.77	0.65
1:B:332:GLU:OE1	1:B:335:ARG:NH2	2.29	0.65
1:B:193:ARG:NH1	1:B:315:ASP:OD2	2.28	0.64
6:L:85:ARG:NH1	6:L:89:GLU:OE1	2.30	0.64
2:D:410:ARG:HD2	2:D:447:PRO:HD3	1.80	0.64

Continued on next page...

Continued from previous page...

Atom-1	Atom-2	Interatomic distance (Å)	Clash overlap (Å)
6:J:113:GLU:OE1	6:J:138:ARG:NH2	2.31	0.63
1:C:220:MET:O	1:C:379:THR:OG1	2.16	0.62
2:F:2:ASP:O	6:J:173:ARG:NH1	2.32	0.62
1:A:236:VAL:HG21	7:A:601:ADP:H2'	1.81	0.62
1:A:210:ARG:NH1	1:A:507:CYS:SG	2.72	0.61
2:F:41:ARG:NH2	2:F:61:GLU:OE1	2.34	0.61
6:J:151:GLY:HA3	6:J:166:SER:HA	1.81	0.61
2:E:277:ILE:HD12	2:E:278:PRO:HD2	1.83	0.60
1:B:247:ALA:O	1:B:284:ARG:NH2	2.33	0.60
2:E:340:SER:HB2	2:E:353:ASP:HB2	1.84	0.60
1:B:252:TYR:HB3	1:B:287:LEU:HD23	1.85	0.59
1:B:326:SER:H	1:B:383:ALA:HB3	1.67	0.59
1:B:342:GLU:OE2	3:G:198:LYS:NZ	2.33	0.58
2:F:325:ILE:HB	2:F:326:PRO:HD3	1.86	0.58
1:C:387:PRO:HD2	1:C:393:GLU:HG3	1.86	0.57
2:F:165:ALA:HB1	2:F:207:GLU:HG2	1.86	0.57
5:K:106:ARG:NH2	6:L:186:LEU:O	2.38	0.57
3:G:104:LEU:HD13	4:H:44:LEU:HD12	1.87	0.57
1:A:387:PRO:HD2	1:A:393:GLU:HG3	1.87	0.57
1:A:476:LEU:HD13	1:A:480:GLU:HB3	1.87	0.57
6:L:95:PRO:HA	6:L:100:TRP:CG	2.40	0.56
2:F:43:ARG:NH1	2:F:62:GLU:O	2.38	0.56
1:B:483:VAL:HA	1:B:486:VAL:HG12	1.87	0.55
1:A:416:ARG:NH2	2:F:391:ASP:OD2	2.39	0.55
4:H:60:GLU:HA	4:H:63:MET:HG3	1.89	0.55
2:F:340:SER:OG	2:F:342:GLU:OE1	2.25	0.55
2:D:59:VAL:HG12	2:D:60:PHE:O	2.07	0.55
6:L:150:LEU:HD13	6:L:167:LEU:HB2	1.88	0.54
1:C:547:ARG:NH1	1:C:569:GLU:OE1	2.40	0.54
1:B:391:MET:O	1:B:397:GLN:NE2	2.36	0.54
2:D:77:GLU:OE2	2:D:111:ARG:NH1	2.41	0.54
2:D:325:ILE:HB	2:D:326:PRO:HD3	1.87	0.54
1:C:277:THR:HG23	1:C:279:GLY:H	1.73	0.54
1:C:461:GLU:OE2	1:C:491:ARG:NH2	2.41	0.54
1:C:39:ILE:HD13	1:C:49:VAL:HG22	1.89	0.54
2:D:169:ARG:HG3	2:D:211:THR:HG21	1.88	0.54
2:E:371:THR:OG1	2:E:372:ARG:N	2.41	0.54
2:D:404:LEU:O	2:D:409:ARG:NH1	2.42	0.53
1:C:198:LYS:HD3	1:C:368:VAL:HG12	1.90	0.53
1:A:459:GLN:OE1	2:D:345:ARG:NH1	2.36	0.52
1:A:233:GLY:HA2	7:A:601:ADP:O1A	2.09	0.52

Continued on next page...

Continued from previous page...

Atom-1	Atom-2	Interatomic distance (Å)	Clash overlap (Å)
1:C:83:ILE:HG23	1:C:91:LEU:HB2	1.92	0.52
1:A:300:GLU:HG3	1:A:330:TRP:HE1	1.75	0.52
6:J:61:GLU:HG2	6:J:63:ALA:H	1.74	0.52
1:C:329:ARG:NH1	1:C:332:GLU:OE2	2.43	0.52
1:B:238:GLN:HA	1:B:241:LEU:HD12	1.92	0.51
3:G:75:VAL:HG12	3:G:120:PRO:HD3	1.91	0.51
6:J:119:LYS:HB2	6:J:157:ALA:HA	1.92	0.51
2:E:125:ARG:HG3	2:E:300:VAL:HG23	1.93	0.51
6:L:128:LEU:N	6:L:129:PRO:HD2	2.25	0.51
2:F:4:LEU:HD23	2:F:4:LEU:H	1.76	0.51
3:G:140:VAL:HG12	4:H:72:LEU:HD11	1.93	0.51
1:A:486:VAL:HG21	1:A:523:TYR:HD1	1.76	0.51
5:K:92:ALA:HB2	6:L:68:VAL:HG22	1.93	0.51
6:J:105:ARG:HH21	6:J:130:HIS:HA	1.76	0.50
1:B:156:ARG:HB3	1:B:176:GLU:HG3	1.94	0.50
1:A:300:GLU:HG3	1:A:330:TRP:NE1	2.27	0.50
2:D:425:GLN:NE2	2:D:428:GLN:O	2.41	0.50
2:F:87:GLU:HB2	2:F:106:ILE:HD11	1.93	0.50
2:F:125:ARG:HB3	2:F:300:VAL:HG23	1.93	0.50
1:A:38:GLU:OE1	1:A:52:TYR:OH	2.26	0.50
2:E:325:ILE:HB	2:E:326:PRO:HD3	1.93	0.50
2:E:149:LYS:HG2	2:E:334:GLU:OE1	2.12	0.50
2:F:229:ILE:HD12	2:F:270:ILE:HD11	1.94	0.50
2:D:340:SER:HB2	2:D:353:ASP:HB2	1.94	0.50
1:B:477:GLN:HE21	1:B:480:GLU:HG3	1.76	0.49
3:G:60:ALA:HB1	3:G:130:PHE:CD1	2.47	0.49
2:D:53:GLU:HG3	2:D:54:TYR:CD2	2.47	0.49
6:J:85:ARG:O	6:J:88:ARG:HG3	2.12	0.49
3:G:86:LEU:HG	4:H:17:GLY:O	2.13	0.49
1:B:198:LYS:HG2	1:B:368:VAL:HG12	1.94	0.49
5:K:91:ARG:HH11	6:L:68:VAL:HG21	1.77	0.49
2:F:444:SER:HA	2:F:463:TYR:CE2	2.48	0.49
1:B:521:ALA:O	1:B:525:GLU:HG2	2.13	0.48
6:L:97:LYS:HD3	6:L:98:PRO:HD2	1.95	0.48
1:A:401:ARG:CZ	2:D:265:GLU:HG3	2.43	0.48
1:B:529:ALA:HA	1:B:532:ARG:HD3	1.94	0.48
2:D:131:ILE:HG13	2:D:146:ARG:HG2	1.95	0.48
1:C:38:GLU:OE1	1:C:52:TYR:OH	2.28	0.48
1:A:425:ASN:OD1	2:D:345:ARG:NH2	2.47	0.48
1:C:258:ARG:HB2	1:C:261:GLU:HG3	1.94	0.48
2:F:261:THR:O	2:F:265:GLU:HG2	2.14	0.48

Continued on next page...

Continued from previous page...

Atom-1	Atom-2	Interatomic distance (Å)	Clash overlap (Å)
1:C:478:ASP:OD1	1:C:478:ASP:N	2.47	0.48
6:L:108:ALA:HA	6:L:152:VAL:HG21	1.95	0.48
3:G:120:PRO:HG2	3:G:123:THR:OG1	2.14	0.47
2:F:67:ASP:N	2:F:67:ASP:OD1	2.48	0.47
6:J:82:GLU:O	6:J:86:ARG:HG2	2.14	0.47
1:A:227:PRO:HB3	1:A:384:VAL:HB	1.96	0.47
2:F:396:VAL:HG12	2:F:404:LEU:HD21	1.96	0.47
3:G:134:ALA:HB2	4:H:18:LEU:HD11	1.97	0.47
1:B:535:SER:HB3	1:B:538:GLU:HG3	1.96	0.47
6:J:164:GLU:OE2	6:J:166:SER:N	2.48	0.47
2:F:340:SER:HB2	2:F:353:ASP:HB2	1.96	0.47
3:G:68:GLN:HB2	3:G:73:PRO:HG3	1.95	0.47
1:B:219:ALA:HB2	1:B:435:LEU:HD11	1.95	0.47
2:D:317:PRO:HG2	2:D:323:HIS:CD2	2.50	0.47
1:C:393:GLU:HG2	1:C:394:PRO:HD2	1.97	0.46
2:E:298:ALA:HB2	2:E:310:GLN:HG3	1.96	0.46
1:C:311:GLU:OE1	1:C:364:ARG:NH1	2.41	0.46
2:D:323:HIS:HD2	2:D:325:ILE:H	1.63	0.46
1:A:123:VAL:HG23	1:A:160:VAL:HG11	1.96	0.46
2:F:258:THR:O	2:F:313:ILE:HB	2.16	0.46
2:D:153:PHE:CE1	2:D:314:LEU:HD21	2.51	0.46
2:F:37:ASP:HB3	2:F:66:LEU:HD23	1.97	0.46
1:C:227:PRO:HG2	1:C:406:PHE:HE1	1.79	0.46
2:E:444:SER:HA	2:E:463:TYR:CE1	2.51	0.45
2:F:392:ILE:HD13	2:F:408:ASP:HA	1.98	0.45
5:I:115:LEU:HA	5:I:118:VAL:HG12	1.97	0.45
5:I:112:ALA:O	5:I:116:LYS:HG2	2.17	0.45
5:I:119:LEU:HD23	6:J:167:LEU:HD11	1.97	0.45
2:D:395:LEU:HA	3:G:27:LEU:HD11	1.98	0.45
4:H:3:VAL:HG13	4:H:46:ALA:HB3	1.98	0.45
6:J:64:GLY:O	6:J:68:VAL:HG23	2.16	0.45
1:A:83:ILE:HG23	1:A:91:LEU:HB2	1.98	0.45
5:I:103:ALA:HB1	6:J:79:VAL:HG11	1.99	0.45
1:C:482:LEU:HD22	1:C:530:ILE:HD12	1.98	0.45
2:E:382:LEU:HD11	2:E:439:ALA:HB1	1.99	0.45
1:B:35:LEU:HD11	1:B:104:ARG:HH21	1.82	0.45
2:D:155:GLY:H	2:D:158:LEU:HD12	1.80	0.45
3:G:108:PHE:HE2	3:G:128:ARG:HH22	1.64	0.45
6:L:123:ALA:HA	6:L:148:LEU:HD23	1.99	0.45
3:G:184:GLU:OE2	3:G:188:ARG:NH2	2.50	0.44
4:H:39:ARG:HH11	4:H:41:GLY:HA3	1.82	0.44

Continued on next page...

Continued from previous page...

Atom-1	Atom-2	Interatomic distance (Å)	Clash overlap (Å)
2:D:374:ASP:OD1	2:D:374:ASP:N	2.43	0.44
2:E:393:ARG:O	2:E:396:VAL:HG12	2.18	0.44
4:H:33:LEU:HD13	4:H:45:VAL:HG11	2.00	0.44
4:H:48:ASP:OD1	4:H:48:ASP:N	2.50	0.44
1:C:325:ASP:O	1:C:383:ALA:HB3	2.17	0.44
2:D:67:ASP:OD1	2:D:70:THR:N	2.42	0.44
1:C:156:ARG:NH2	1:C:176:GLU:OE1	2.50	0.44
1:C:450:LEU:CD1	1:C:520:LEU:HD12	2.45	0.44
2:F:214:LEU:HD23	2:F:214:LEU:HA	1.83	0.44
6:L:165:ASN:OD1	6:L:170:ARG:NH1	2.49	0.44
2:E:196:ILE:HG22	2:E:222:ASN:O	2.18	0.44
4:H:14:ARG:NH2	4:H:19:GLU:OE1	2.33	0.44
1:C:258:ARG:HA	2:E:296:GLU:OE2	2.18	0.44
3:G:86:LEU:HD22	3:G:112:ALA:HB3	1.99	0.43
5:I:108:ASP:N	5:I:108:ASP:OD1	2.51	0.43
1:A:98:THR:HG22	1:A:99:GLY:N	2.34	0.43
4:H:13:PHE:HD1	4:H:18:LEU:HD12	1.83	0.43
2:D:124:ARG:NH2	2:D:298:ALA:O	2.51	0.43
4:H:56:GLU:O	4:H:60:GLU:HB3	2.18	0.43
6:J:100:TRP:CD1	6:J:101:PRO:HD3	2.53	0.43
2:D:392:ILE:HD13	2:D:408:ASP:HA	2.00	0.43
1:B:207:THR:HB	1:B:241:LEU:HD23	2.00	0.43
2:E:368:LYS:HE2	2:E:368:LYS:HB3	1.91	0.43
3:G:62:ALA:HA	3:G:65:LEU:HD12	2.00	0.43
1:A:98:THR:HG22	1:A:99:GLY:H	1.85	0.42
1:B:25:TYR:HB2	2:E:64:THR:HG23	2.02	0.42
3:G:94:GLU:HG3	3:G:96:VAL:HG13	2.01	0.42
1:C:520:LEU:HD23	1:C:520:LEU:HA	1.73	0.42
2:F:392:ILE:O	2:F:396:VAL:HG13	2.20	0.42
6:J:149:ARG:HA	6:J:149:ARG:HH11	1.83	0.42
1:A:340:ARG:HA	1:A:340:ARG:HD3	1.88	0.42
1:B:547:ARG:HG3	1:B:569:GLU:OE1	2.20	0.42
6:J:132:GLU:HG2	6:J:142:LEU:HD21	2.01	0.42
2:D:334:GLU:HA	2:D:360:ARG:HD3	2.02	0.42
1:C:386:PRO:HA	1:C:387:PRO:HD3	1.95	0.42
1:A:365:ALA:HB2	1:A:380:ILE:HG13	2.02	0.42
2:F:8:TYR:OH	2:F:26:ASP:HB2	2.19	0.42
2:F:51:SER:OG	2:F:52:GLU:N	2.53	0.42
5:I:92:ALA:HB2	6:J:68:VAL:HG22	2.01	0.42
6:J:176:ASP:OD1	6:J:177:ALA:N	2.51	0.42
2:D:231:ARG:HD2	2:D:266:ALA:HB2	2.01	0.41

Continued on next page...

Continued from previous page...

Atom-1	Atom-2	Interatomic distance (Å)	Clash overlap (Å)
2:D:323:HIS:CD2	2:D:325:ILE:H	2.37	0.41
2:D:334:GLU:HB3	2:D:360:ARG:HB2	2.02	0.41
1:B:450:LEU:O	1:B:454:ILE:HG12	2.19	0.41
5:K:90:GLU:O	5:K:93:GLU:HG3	2.20	0.41
6:L:78:GLU:HA	6:L:81:GLU:HG2	2.02	0.41
1:A:545:LEU:HA	1:A:545:LEU:HD23	1.82	0.41
1:C:542:LEU:HD21	1:C:577:LEU:HD11	2.02	0.41
4:H:55:PRO:O	4:H:59:VAL:HG22	2.20	0.41
6:J:128:LEU:N	6:J:129:PRO:HD2	2.36	0.41
2:D:263:TYR:OH	2:D:290:ASP:OD2	2.27	0.41
6:L:101:PRO:HA	6:L:104:VAL:HG22	2.02	0.41
1:C:362:TYR:HB2	1:C:402:ILE:HD12	2.02	0.41
2:F:355:LEU:HB2	2:F:356:PRO:HD3	2.03	0.41
1:A:393:GLU:HG2	1:A:394:PRO:HD2	2.02	0.41
1:C:387:PRO:CD	1:C:393:GLU:HG3	2.50	0.41
5:I:88:TYR:CD2	6:J:64:GLY:HA3	2.55	0.41
1:B:477:GLN:NE2	1:B:480:GLU:HG3	2.36	0.41
1:C:365:ALA:HB2	1:C:380:ILE:HG13	2.03	0.41
1:A:51:VAL:HG12	1:A:53:GLU:H	1.87	0.40
1:A:461:GLU:HG2	1:A:484:ILE:HD13	2.01	0.40
1:B:280:PRO:HD2	1:B:283:HIS:CD2	2.56	0.40
6:L:99:GLU:O	6:L:103:VAL:HG23	2.21	0.40
1:A:524:LYS:HB3	1:A:524:LYS:HE3	1.89	0.40
1:B:167:THR:OG1	1:B:170:GLU:OE1	2.29	0.40
1:C:293:ASN:OD1	1:C:293:ASN:N	2.55	0.40
1:C:340:ARG:HD3	1:C:340:ARG:HA	1.88	0.40
1:A:386:PRO:HA	1:A:387:PRO:HD3	1.95	0.40
1:C:150:PRO:HA	1:C:151:PRO:HD3	1.94	0.40
4:H:85:ASP:N	4:H:85:ASP:OD1	2.54	0.40
1:A:488:ARG:NH1	1:A:492:GLU:OE1	2.53	0.40
2:D:9:THR:OG1	6:L:160:LYS:O	2.32	0.40
5:K:97:LYS:O	5:K:101:GLU:HG2	2.22	0.40
1:B:517:LYS:HE2	1:B:517:LYS:HB3	1.87	0.40
1:C:255:CYS:SG	1:C:299:ARG:HB3	2.62	0.40

There are no symmetry-related clashes.

5.3 Torsion angles [i](#)

5.3.1 Protein backbone [i](#)

In the following table, the Percentiles column shows the percent Ramachandran outliers of the chain as a percentile score with respect to all PDB entries followed by that with respect to all EM entries.

The Analysed column shows the number of residues for which the backbone conformation was analysed, and the total number of residues.

Mol	Chain	Analysed	Favoured	Allowed	Outliers	Percentiles	
1	A	576/578 (100%)	565 (98%)	11 (2%)	0	100	100
1	B	576/578 (100%)	560 (97%)	16 (3%)	0	100	100
1	C	576/578 (100%)	565 (98%)	11 (2%)	0	100	100
2	D	468/478 (98%)	458 (98%)	10 (2%)	0	100	100
2	E	466/478 (98%)	449 (96%)	17 (4%)	0	100	100
2	F	469/478 (98%)	454 (97%)	15 (3%)	0	100	100
3	G	204/223 (92%)	198 (97%)	6 (3%)	0	100	100
4	H	102/104 (98%)	96 (94%)	6 (6%)	0	100	100
5	I	38/120 (32%)	38 (100%)	0	0	100	100
5	K	38/120 (32%)	38 (100%)	0	0	100	100
6	J	125/188 (66%)	124 (99%)	1 (1%)	0	100	100
6	L	126/188 (67%)	126 (100%)	0	0	100	100
All	All	3764/4111 (92%)	3671 (98%)	93 (2%)	0	100	100

There are no Ramachandran outliers to report.

5.3.2 Protein sidechains [i](#)

In the following table, the Percentiles column shows the percent sidechain outliers of the chain as a percentile score with respect to all PDB entries followed by that with respect to all EM entries.

The Analysed column shows the number of residues for which the sidechain conformation was analysed, and the total number of residues.

Mol	Chain	Analysed	Rotameric	Outliers	Percentiles	
1	A	467/467 (100%)	466 (100%)	1 (0%)	93	98
1	B	467/467 (100%)	466 (100%)	1 (0%)	93	98

Continued on next page...

Continued from previous page...

Mol	Chain	Analysed	Rotameric	Outliers	Percentiles	
1	C	467/467 (100%)	466 (100%)	1 (0%)	93	98
2	D	394/401 (98%)	394 (100%)	0	100	100
2	E	394/401 (98%)	393 (100%)	1 (0%)	92	97
2	F	396/401 (99%)	396 (100%)	0	100	100
3	G	164/176 (93%)	164 (100%)	0	100	100
4	H	80/80 (100%)	80 (100%)	0	100	100
5	I	30/86 (35%)	29 (97%)	1 (3%)	38	73
5	K	30/86 (35%)	30 (100%)	0	100	100
6	J	97/141 (69%)	97 (100%)	0	100	100
6	L	97/141 (69%)	97 (100%)	0	100	100
All	All	3083/3314 (93%)	3078 (100%)	5 (0%)	93	98

All (5) residues with a non-rotameric sidechain are listed below:

Mol	Chain	Res	Type
1	A	95	ARG
1	B	417	ARG
1	C	95	ARG
2	E	183	LYS
5	I	87	ARG

Sometimes sidechains can be flipped to improve hydrogen bonding and reduce clashes. All (1) such sidechains are listed below:

Mol	Chain	Res	Type
2	D	323	HIS

5.3.3 RNA [i](#)

There are no RNA molecules in this entry.

5.4 Non-standard residues in protein, DNA, RNA chains [i](#)

There are no non-standard protein/DNA/RNA residues in this entry.

5.5 Carbohydrates [i](#)

There are no monosaccharides in this entry.

5.6 Ligand geometry [i](#)

Of 6 ligands modelled in this entry, 2 are monoatomic - leaving 4 for Mogul analysis.

In the following table, the Counts columns list the number of bonds (or angles) for which Mogul statistics could be retrieved, the number of bonds (or angles) that are observed in the model and the number of bonds (or angles) that are defined in the Chemical Component Dictionary. The Link column lists molecule types, if any, to which the group is linked. The Z score for a bond length (or angle) is the number of standard deviations the observed value is removed from the expected value. A bond length (or angle) with $|Z| > 2$ is considered an outlier worth inspection. RMSZ is the root-mean-square of all Z scores of the bond lengths (or angles).

Mol	Type	Chain	Res	Link	Bond lengths			Bond angles		
					Counts	RMSZ	# $ Z > 2$	Counts	RMSZ	# $ Z > 2$
9	PO4	A	603	8	4,4,4	2.24	2 (50%)	6,6,6	1.09	1 (16%)
10	ATP	B	601	-	26,33,33	0.62	0	31,52,52	0.73	2 (6%)
7	ADP	A	601	8	24,29,29	1.32	5 (20%)	29,45,45	1.74	7 (24%)
10	ATP	C	601	8	26,33,33	0.68	0	31,52,52	0.74	1 (3%)

In the following table, the Chirals column lists the number of chiral outliers, the number of chiral centers analysed, the number of these observed in the model and the number defined in the Chemical Component Dictionary. Similar counts are reported in the Torsion and Rings columns. '-' means no outliers of that kind were identified.

Mol	Type	Chain	Res	Link	Chirals	Torsions	Rings
10	ATP	C	601	8	-	2/18/38/38	0/3/3/3
10	ATP	B	601	-	-	4/18/38/38	0/3/3/3
7	ADP	A	601	8	-	3/12/32/32	0/3/3/3

All (7) bond length outliers are listed below:

Mol	Chain	Res	Type	Atoms	Z	Observed(Å)	Ideal(Å)
7	A	601	ADP	PB-O3B	-2.91	1.43	1.54
9	A	603	PO4	P-O1	-2.51	1.44	1.50
9	A	603	PO4	P-O2	-2.49	1.47	1.54
7	A	601	ADP	PB-O2B	-2.49	1.45	1.54
7	A	601	ADP	PA-O2A	-2.18	1.45	1.55
7	A	601	ADP	C5-C4	2.14	1.46	1.40
7	A	601	ADP	C5-N7	-2.04	1.32	1.39

All (11) bond angle outliers are listed below:

Mol	Chain	Res	Type	Atoms	Z	Observed(°)	Ideal(°)
7	A	601	ADP	C3'-C2'-C1'	4.85	108.28	100.98
7	A	601	ADP	O3B-PB-O3A	-3.57	92.65	104.64
7	A	601	ADP	C4-C5-N7	-3.13	106.14	109.40
7	A	601	ADP	O3'-C3'-C4'	2.34	117.80	111.05
10	B	601	ATP	C5-C6-N6	2.31	123.86	120.35
7	A	601	ADP	PA-O3A-PB	-2.27	125.03	132.83
10	C	601	ATP	C5-C6-N6	2.27	123.81	120.35
7	A	601	ADP	O3B-PB-O1B	2.22	119.36	110.68
7	A	601	ADP	N3-C2-N1	-2.21	125.22	128.68
9	A	603	PO4	O2-P-O1	-2.18	102.91	110.89
10	B	601	ATP	PB-O3B-PG	2.07	139.91	132.83

There are no chirality outliers.

All (9) torsion outliers are listed below:

Mol	Chain	Res	Type	Atoms
10	B	601	ATP	C5'-O5'-PA-O3A
10	B	601	ATP	O4'-C4'-C5'-O5'
10	C	601	ATP	PB-O3B-PG-O2G
10	C	601	ATP	PB-O3B-PG-O3G
7	A	601	ADP	O4'-C4'-C5'-O5'
10	B	601	ATP	C3'-C4'-C5'-O5'
7	A	601	ADP	C3'-C4'-C5'-O5'
10	B	601	ATP	C4'-C5'-O5'-PA
7	A	601	ADP	C4'-C5'-O5'-PA

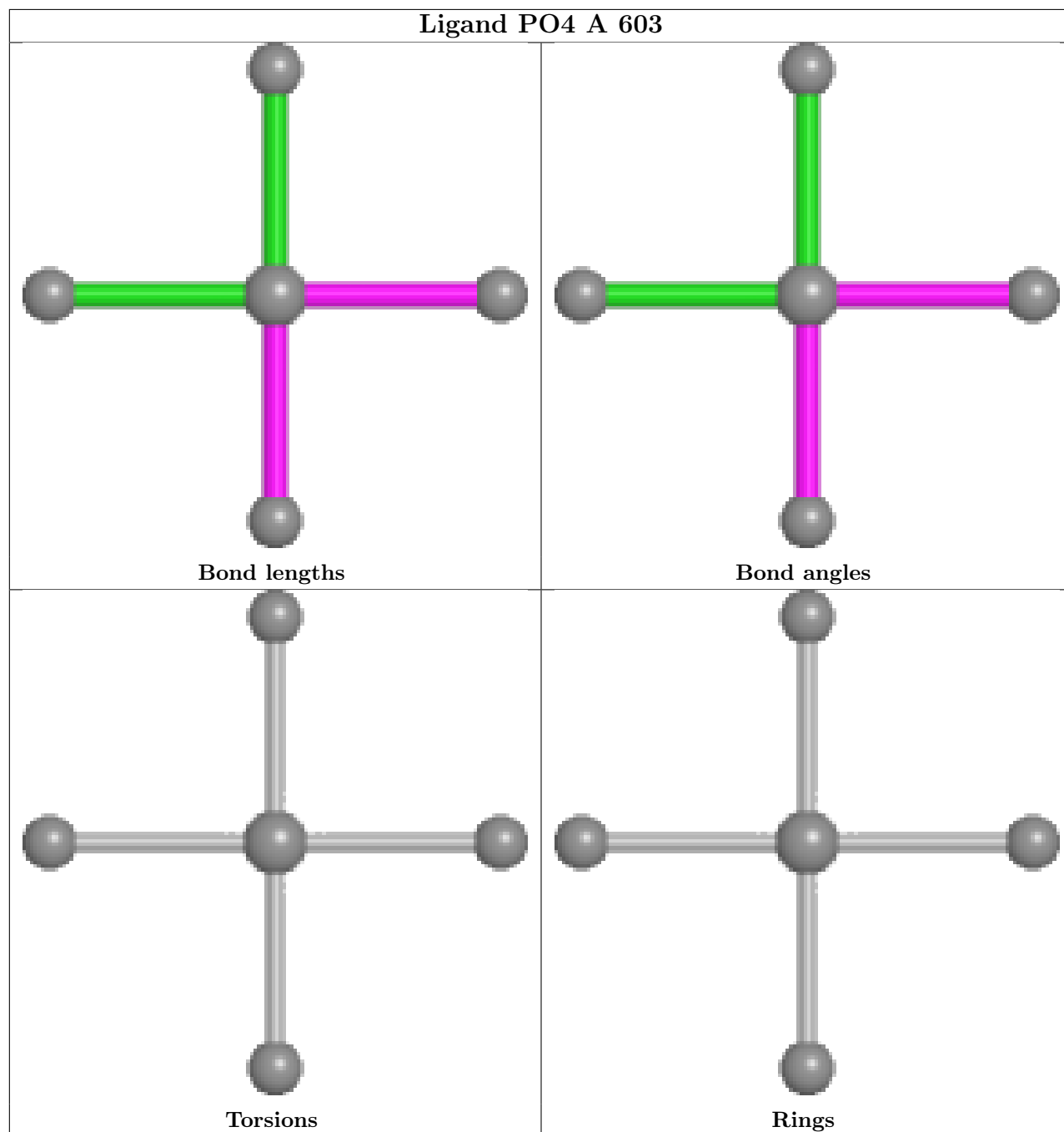
There are no ring outliers.

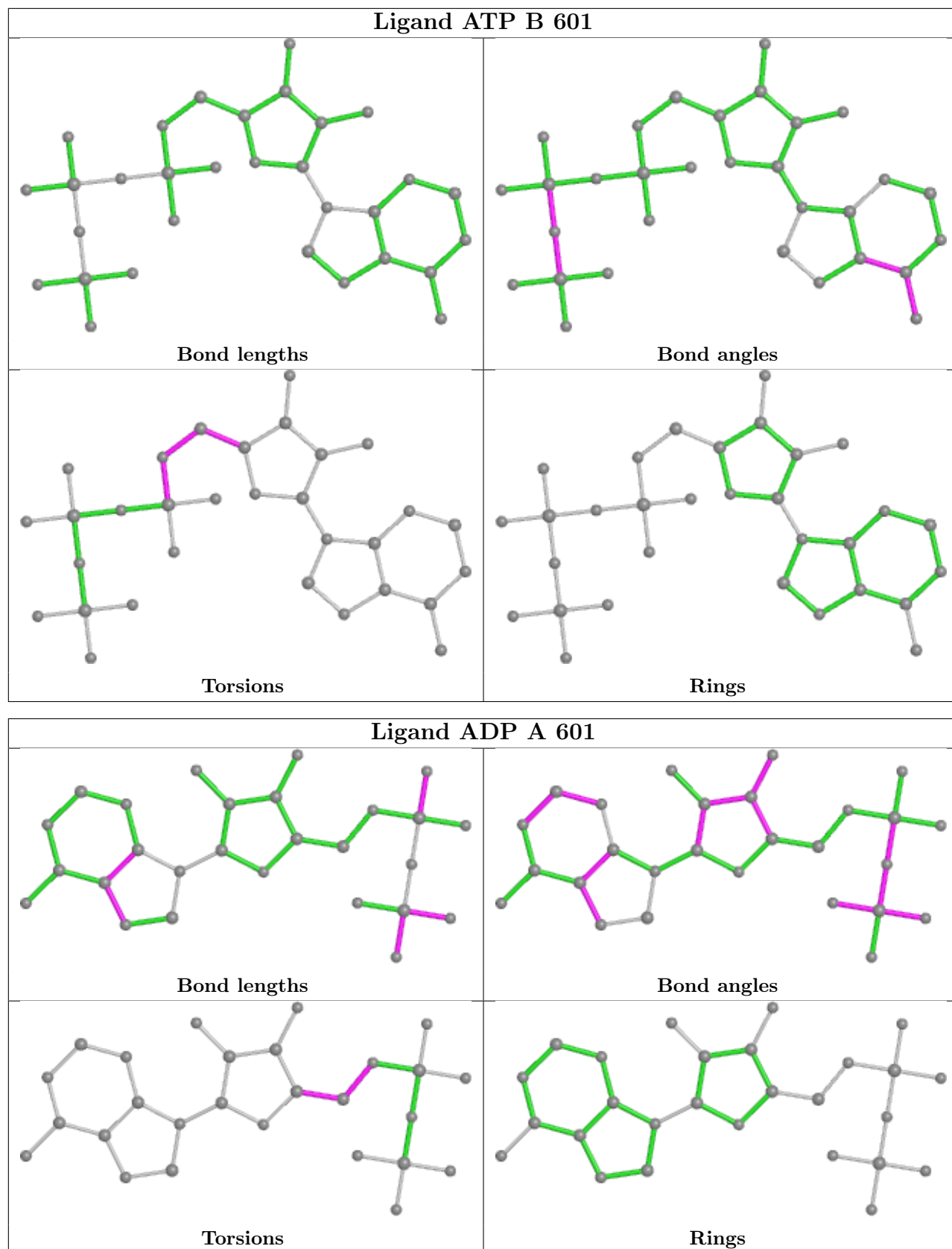
1 monomer is involved in 2 short contacts:

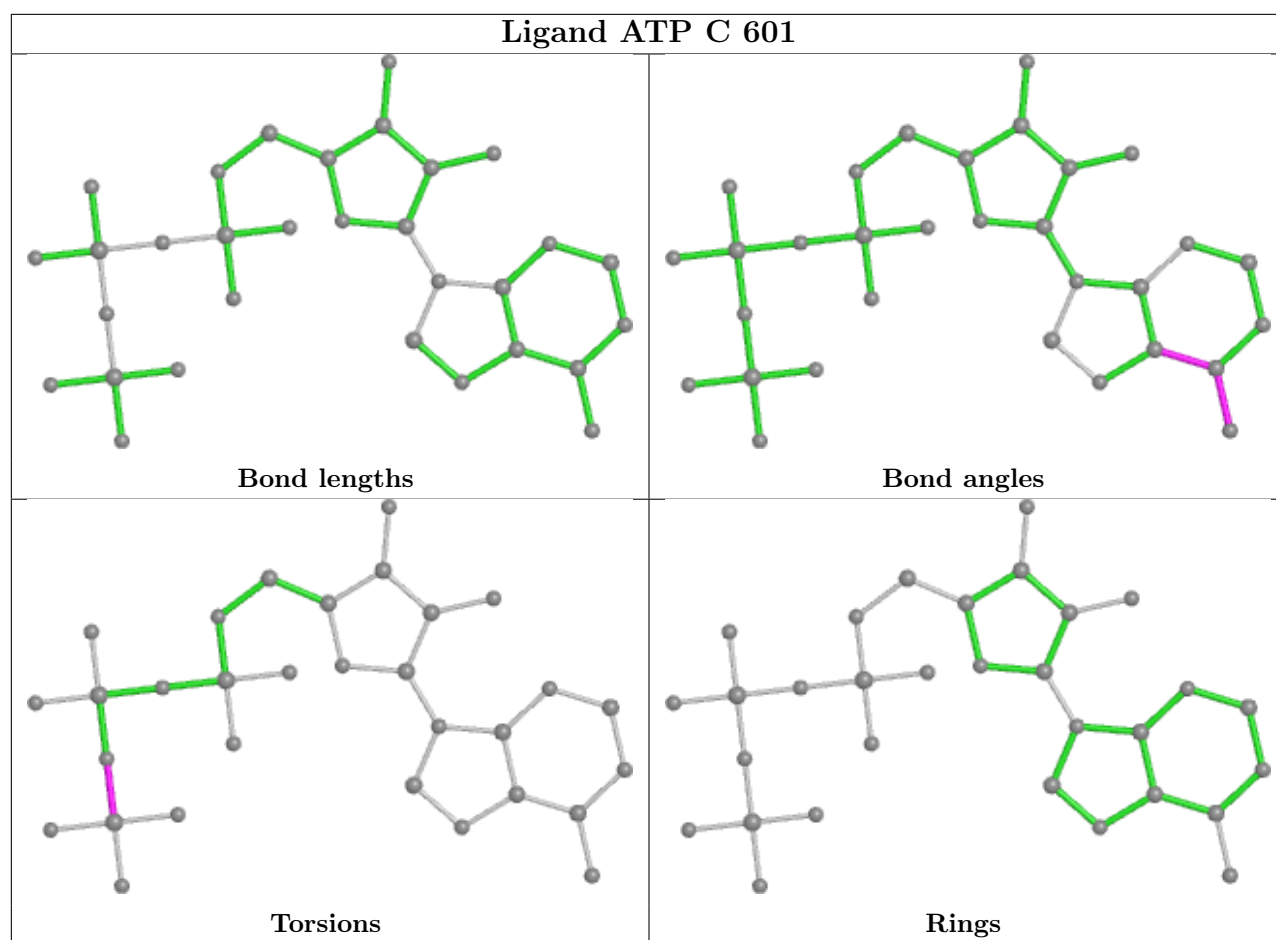
Mol	Chain	Res	Type	Clashes	Symm-Clashes
7	A	601	ADP	2	0

The following is a two-dimensional graphical depiction of Mogul quality analysis of bond lengths, bond angles, torsion angles, and ring geometry for all instances of the Ligand of Interest. In addition, ligands with molecular weight > 250 and outliers as shown on the validation Tables will also be included. For torsion angles, if less than 5% of the Mogul distribution of torsion angles is within 10 degrees of the torsion angle in question, then that torsion angle is considered an outlier. Any bond that is central to one or more torsion angles identified as an outlier by Mogul will be highlighted in the graph. For rings, the root-mean-square deviation (RMSD) between the ring in question and similar rings identified by Mogul is calculated over all ring torsion angles. If the average RMSD is greater than 60 degrees and the minimal RMSD between the ring in question and

any Mogul-identified rings is also greater than 60 degrees, then that ring is considered an outlier. The outliers are highlighted in purple. The color gray indicates Mogul did not find sufficient equivalents in the CSD to analyse the geometry.







5.7 Other polymers [i](#)

There are no such residues in this entry.

5.8 Polymer linkage issues [i](#)

There are no chain breaks in this entry.

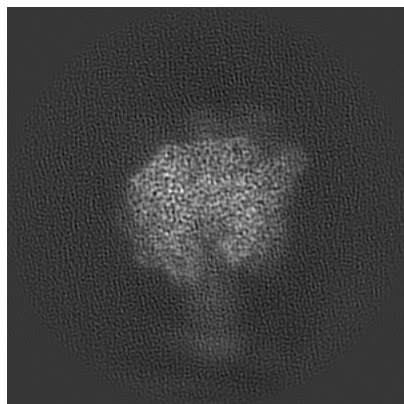
6 Map visualisation [i](#)

This section contains visualisations of the EMDB entry EMD-31853. These allow visual inspection of the internal detail of the map and identification of artifacts.

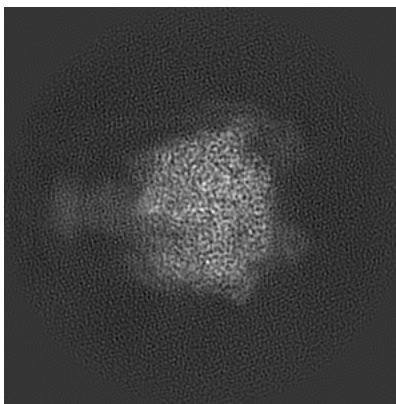
Images derived from a raw map, generated by summing the deposited half-maps, are presented below the corresponding image components of the primary map to allow further visual inspection and comparison with those of the primary map.

6.1 Orthogonal projections [i](#)

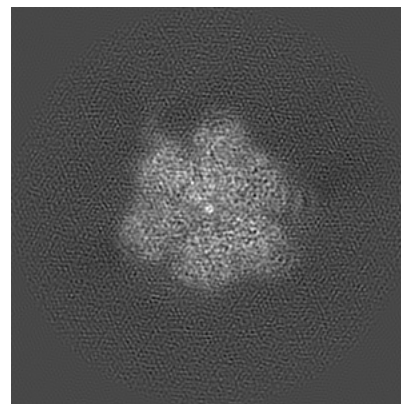
6.1.1 Primary map



X

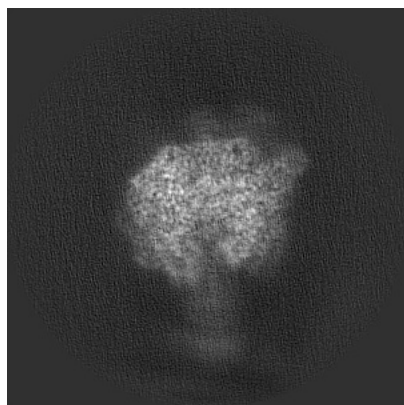


Y

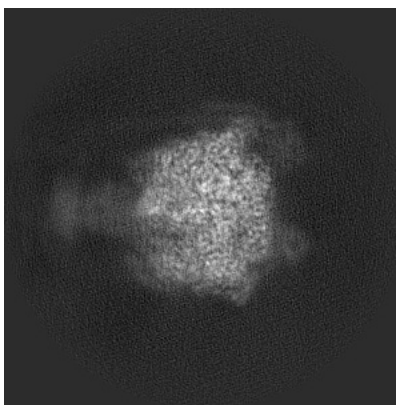


Z

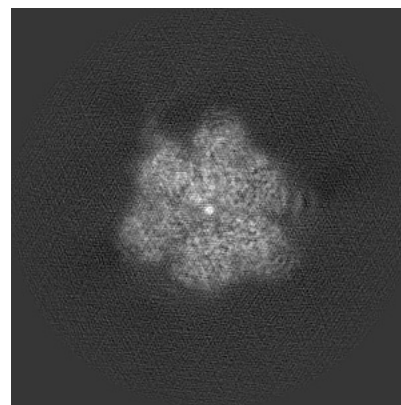
6.1.2 Raw map



X



Y

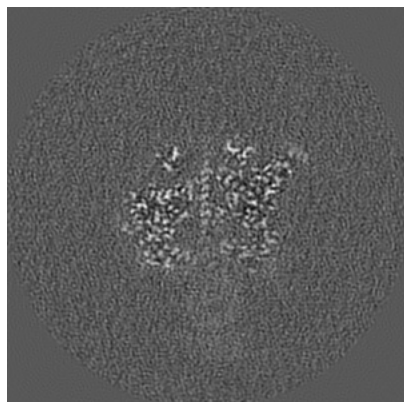


Z

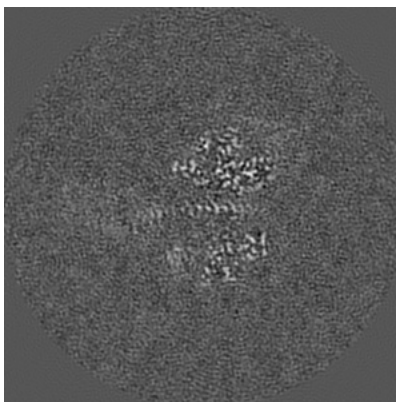
The images above show the map projected in three orthogonal directions.

6.2 Central slices [i](#)

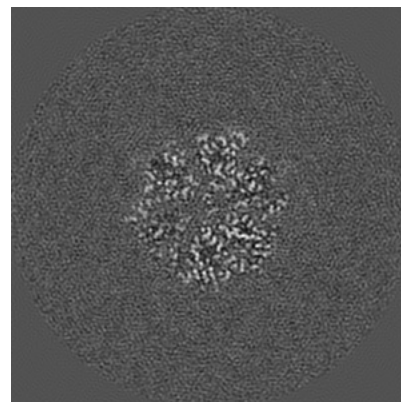
6.2.1 Primary map



X Index: 150

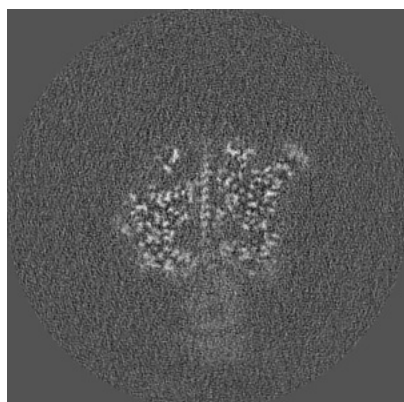


Y Index: 150

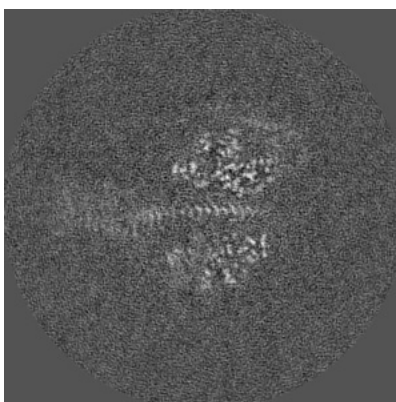


Z Index: 150

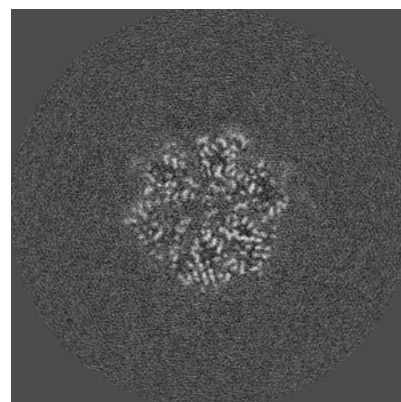
6.2.2 Raw map



X Index: 150



Y Index: 150

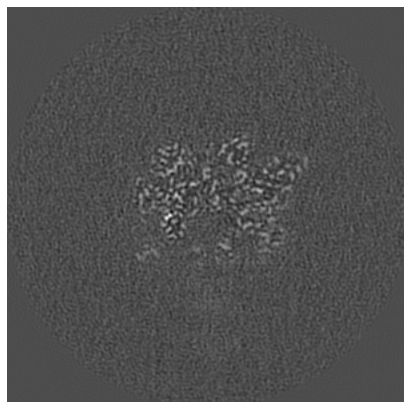


Z Index: 150

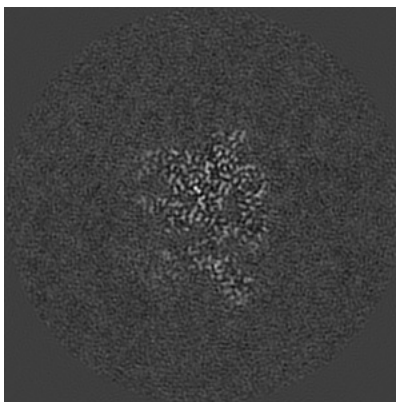
The images above show central slices of the map in three orthogonal directions.

6.3 Largest variance slices [i](#)

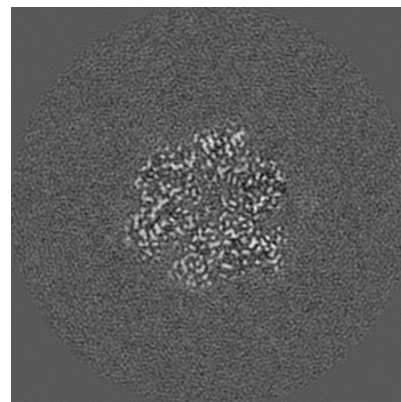
6.3.1 Primary map



X Index: 164

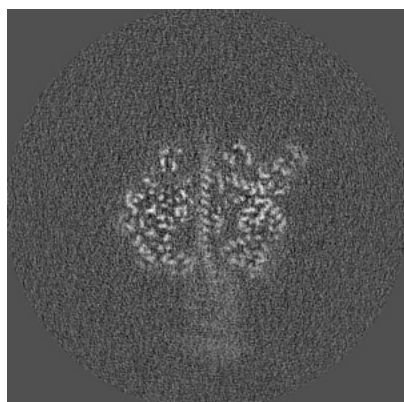


Y Index: 122

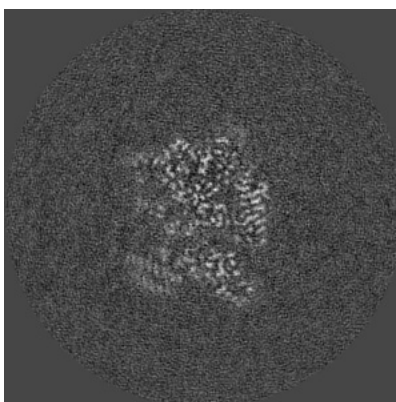


Z Index: 161

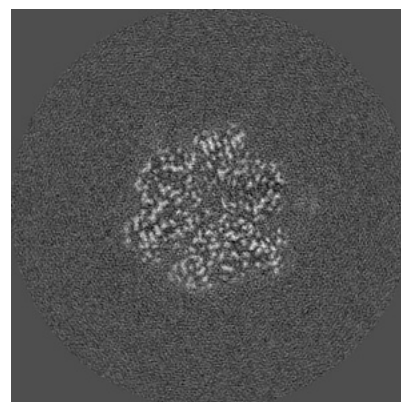
6.3.2 Raw map



X Index: 147



Y Index: 126

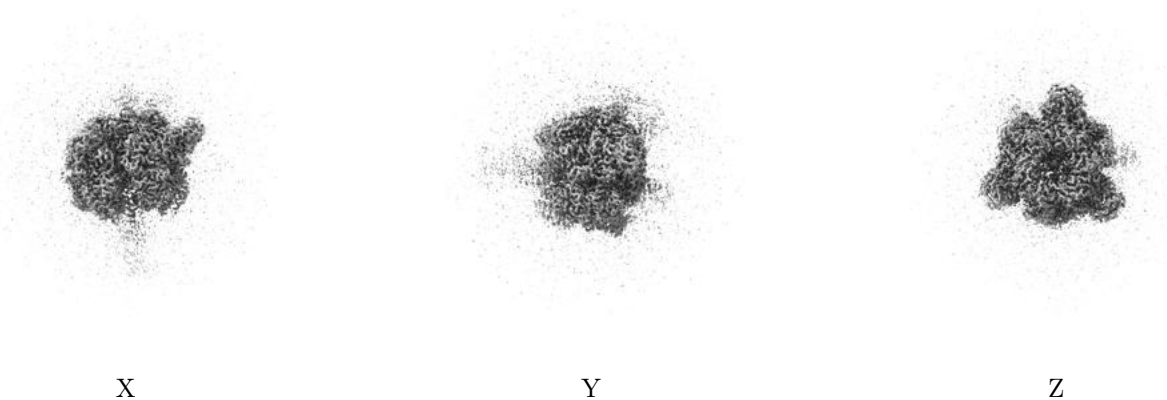


Z Index: 161

The images above show the largest variance slices of the map in three orthogonal directions.

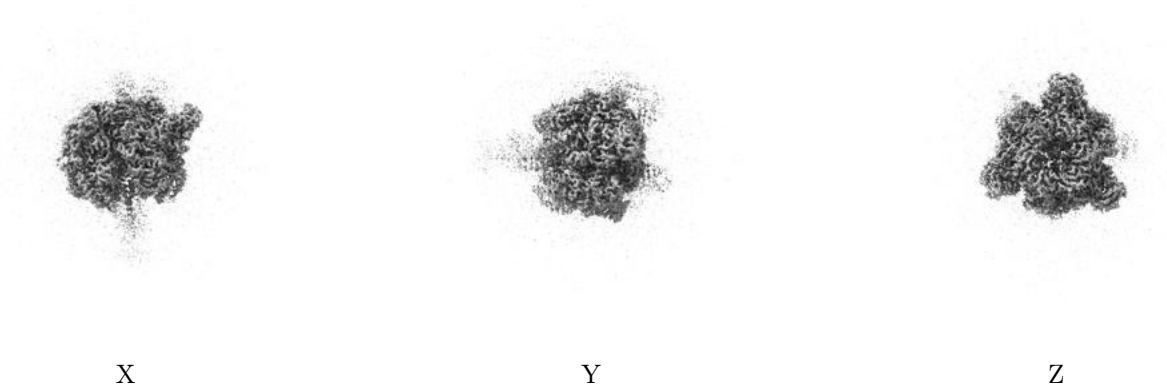
6.4 Orthogonal surface views [i](#)

6.4.1 Primary map



The images above show the 3D surface view of the map at the recommended contour level 0.033. These images, in conjunction with the slice images, may facilitate assessment of whether an appropriate contour level has been provided.

6.4.2 Raw map



These images show the 3D surface of the raw map. The raw map's contour level was selected so that its surface encloses the same volume as the primary map does at its recommended contour level.

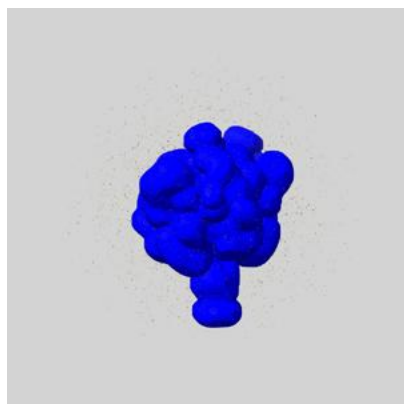
6.5 Mask visualisation [i](#)

This section shows the 3D surface view of the primary map at 50% transparency overlaid with the specified mask at 0% transparency

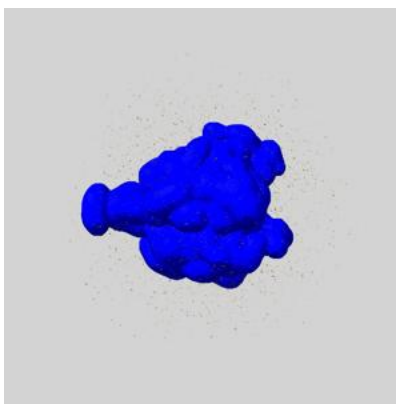
A mask typically either:

- Encompasses the whole structure
- Separates out a domain, a functional unit, a monomer or an area of interest from a larger structure

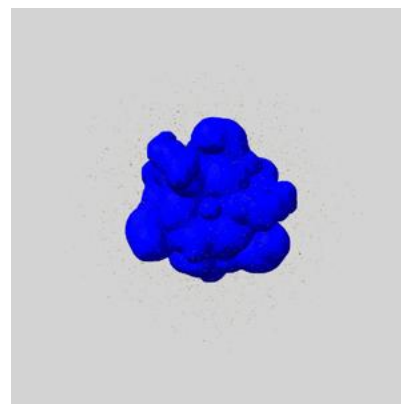
6.5.1 emd_31853_msk_1.map [i](#)



X



Y

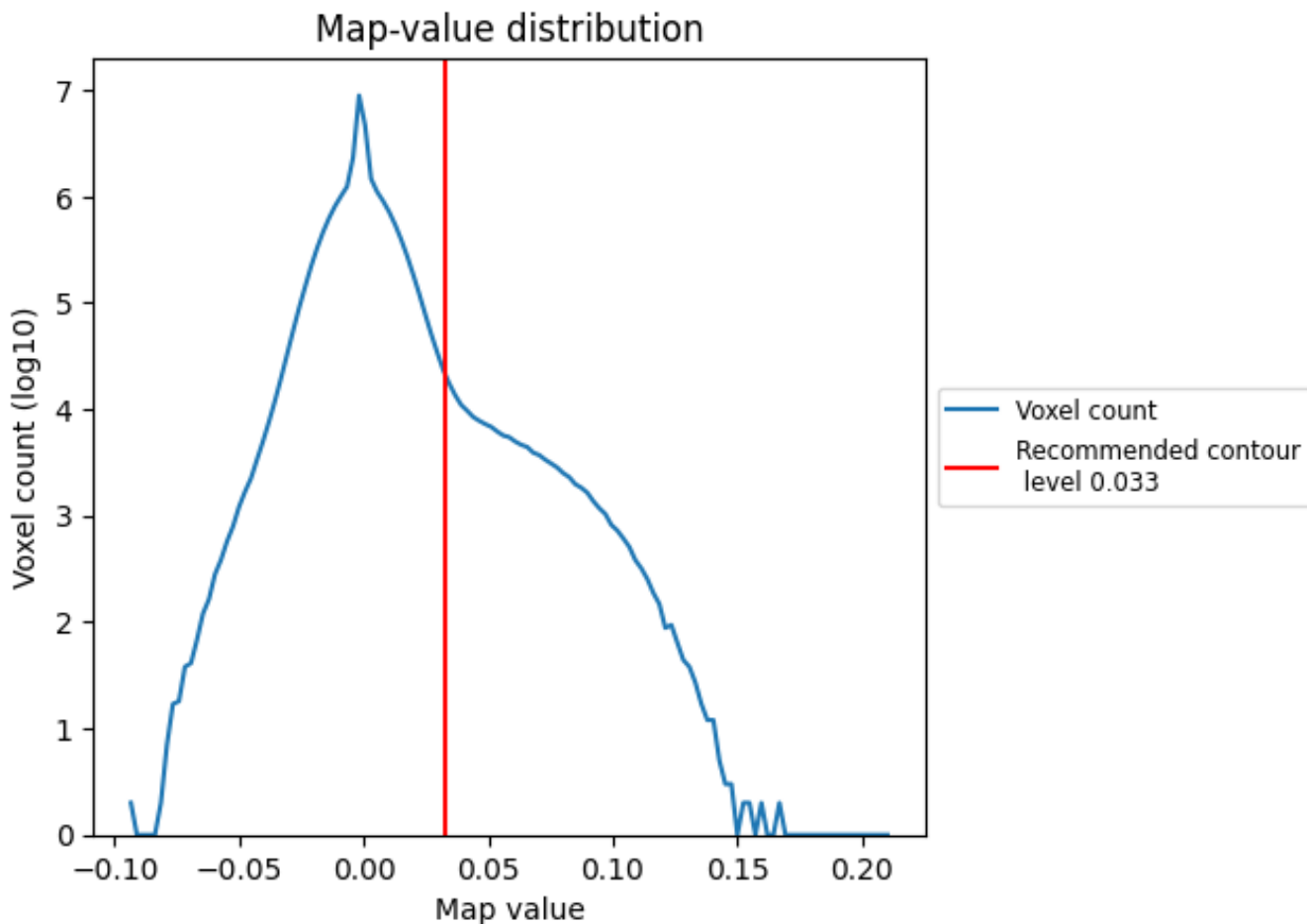


Z

7 Map analysis [i](#)

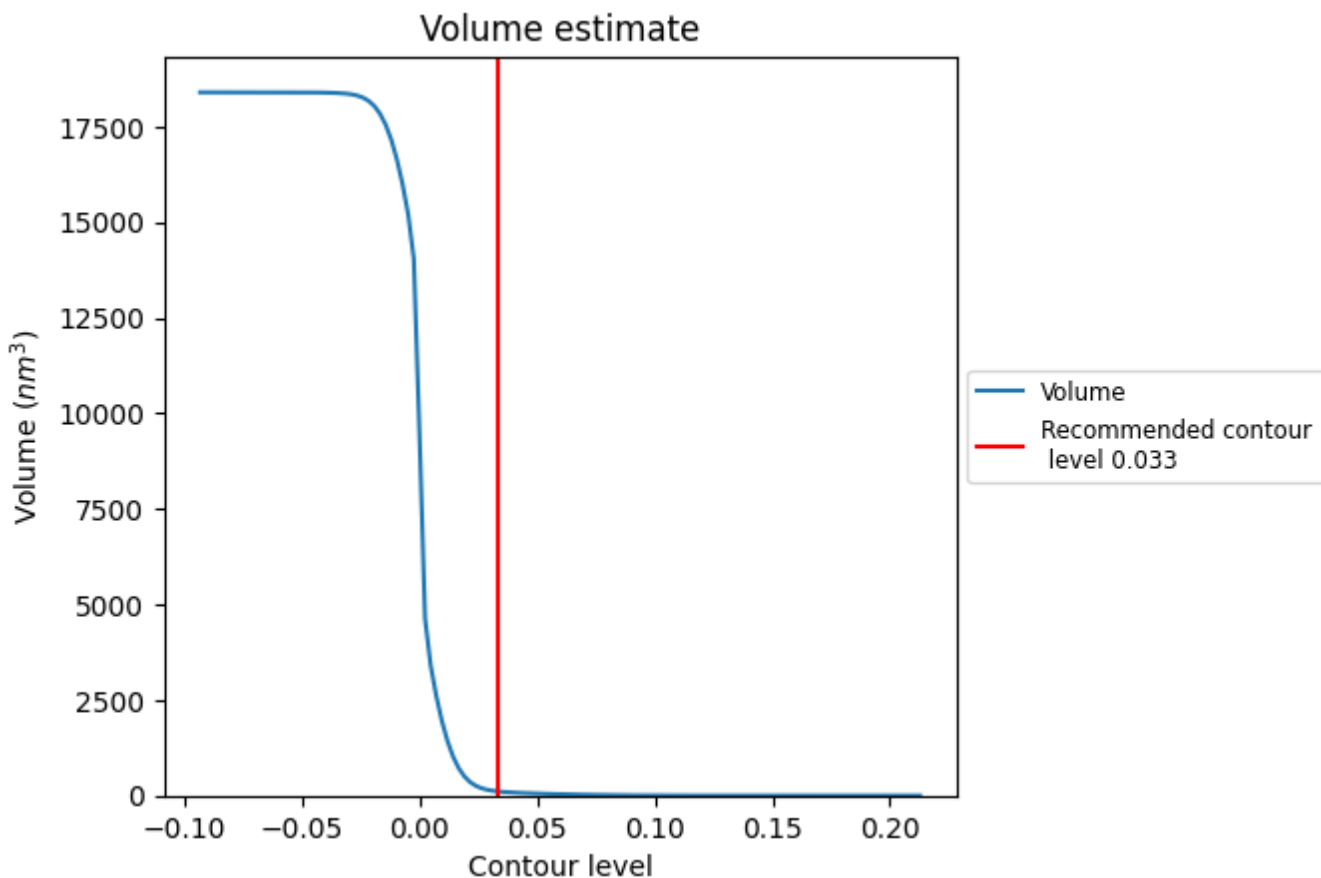
This section contains the results of statistical analysis of the map.

7.1 Map-value distribution [i](#)



The map-value distribution is plotted in 128 intervals along the x-axis. The y-axis is logarithmic. A spike in this graph at zero usually indicates that the volume has been masked.

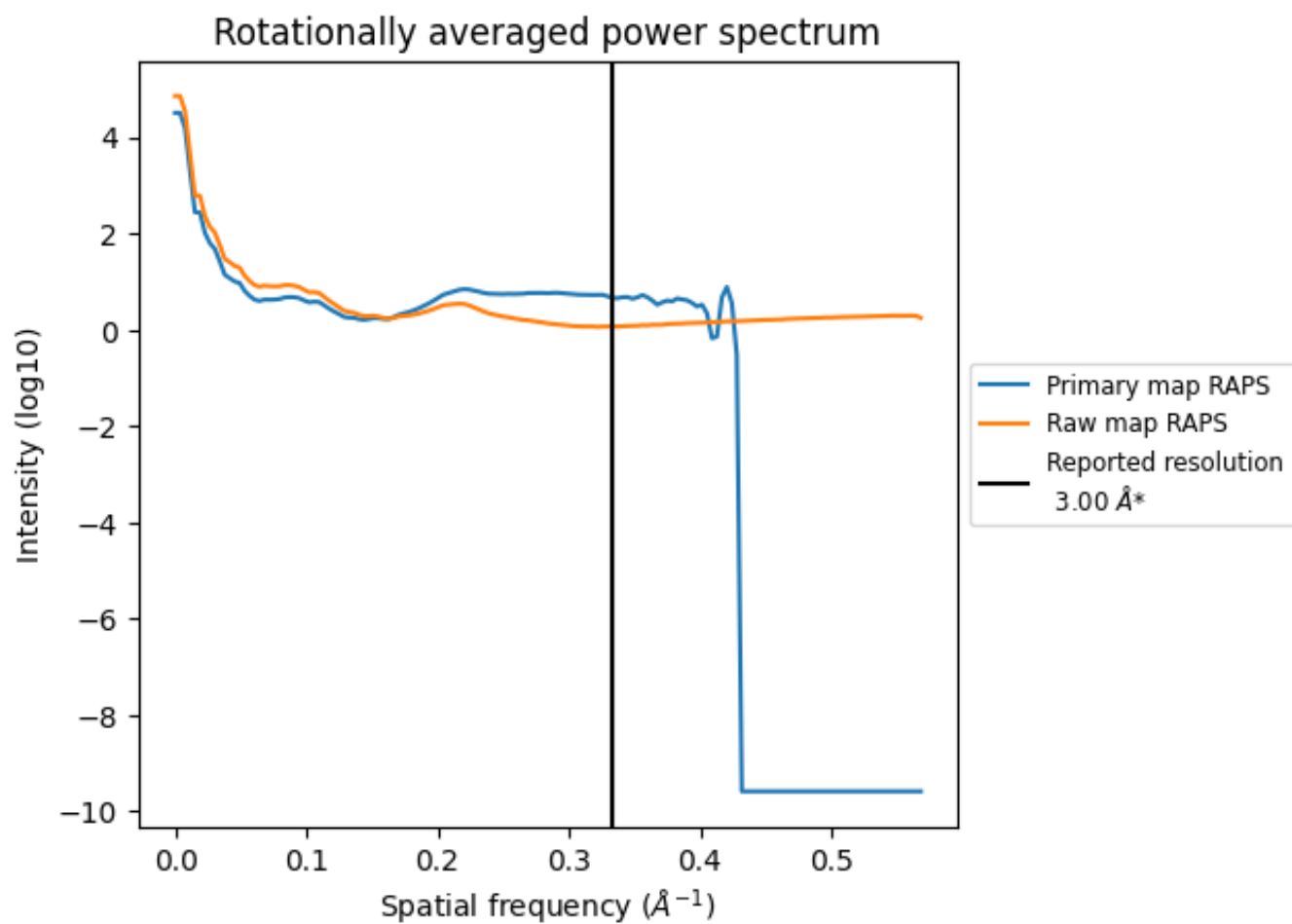
7.2 Volume estimate [i](#)



The volume at the recommended contour level is 110 nm^3 ; this corresponds to an approximate mass of 99 kDa.

The volume estimate graph shows how the enclosed volume varies with the contour level. The recommended contour level is shown as a vertical line and the intersection between the line and the curve gives the volume of the enclosed surface at the given level.

7.3 Rotationally averaged power spectrum i

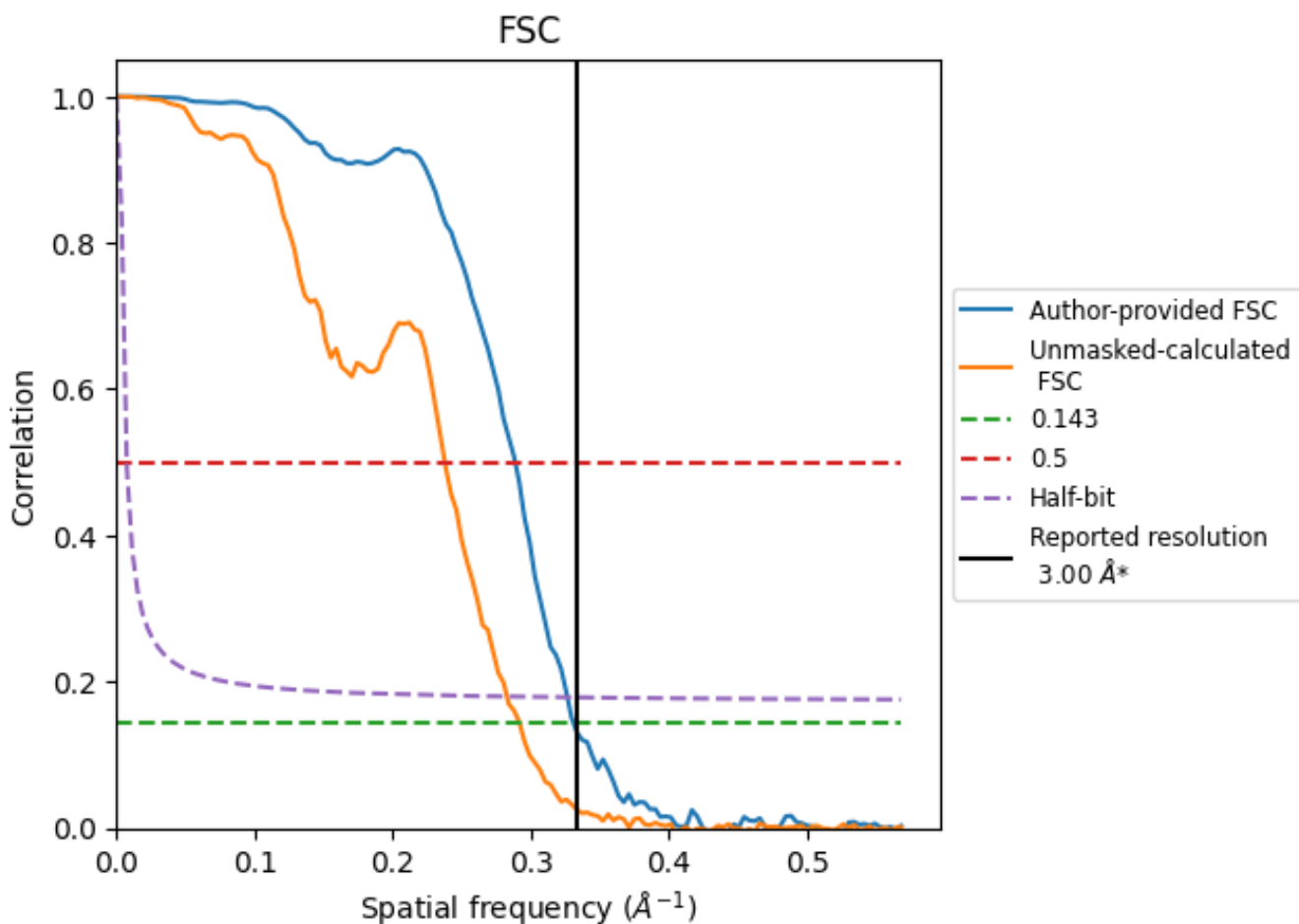


*Reported resolution corresponds to spatial frequency of 0.333 Å⁻¹

8 Fourier-Shell correlation [i](#)

Fourier-Shell Correlation (FSC) is the most commonly used method to estimate the resolution of single-particle and subtomogram-averaged maps. The shape of the curve depends on the imposed symmetry, mask and whether or not the two 3D reconstructions used were processed from a common reference. The reported resolution is shown as a black line. A curve is displayed for the half-bit criterion in addition to lines showing the 0.143 gold standard cut-off and 0.5 cut-off.

8.1 FSC [i](#)



*Reported resolution corresponds to spatial frequency of 0.333 Å⁻¹

8.2 Resolution estimates [i](#)

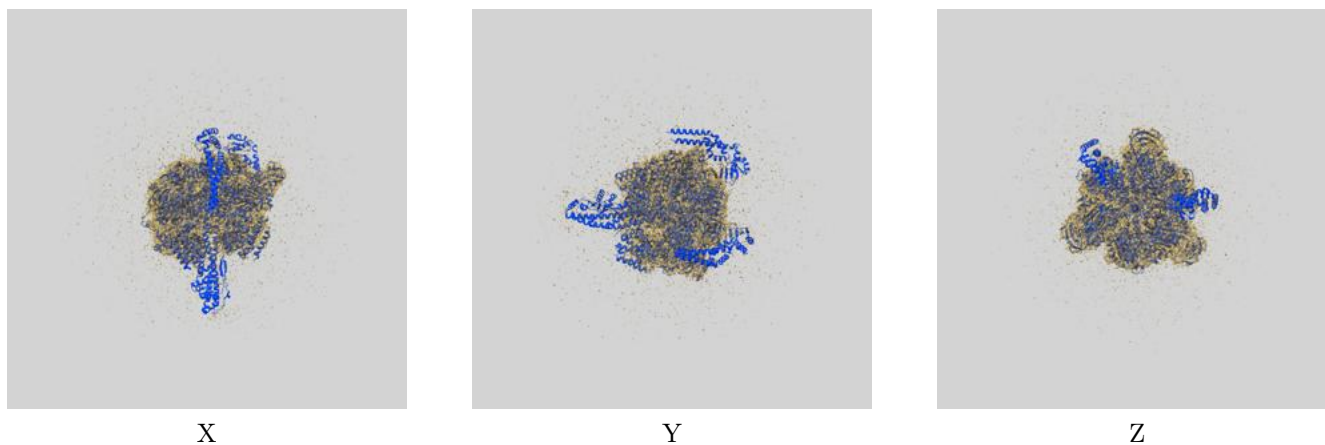
Resolution estimate (Å)	Estimation criterion (FSC cut-off)		
	0.143	0.5	Half-bit
Reported by author	3.00	-	-
Author-provided FSC curve	3.02	3.46	3.06
Unmasked-calculated*	3.43	4.21	3.54

*Resolution estimate based on FSC curve calculated by comparison of deposited half-maps. The value from deposited half-maps intersecting FSC 0.143 CUT-OFF 3.43 differs from the reported value 3.0 by more than 10 %

9 Map-model fit [i](#)

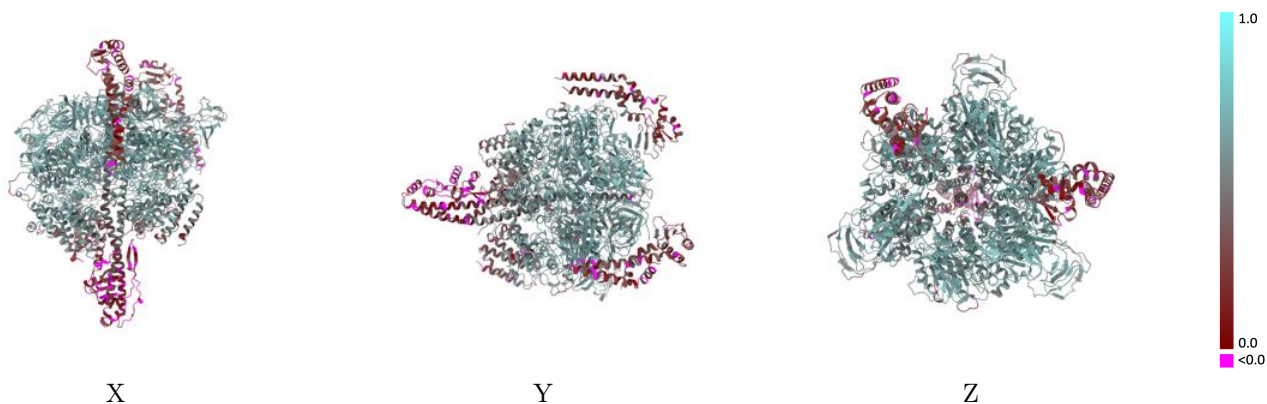
This section contains information regarding the fit between EMDB map EMD-31853 and PDB model 7VAN. Per-residue inclusion information can be found in section 3 on page 8.

9.1 Map-model overlay [i](#)



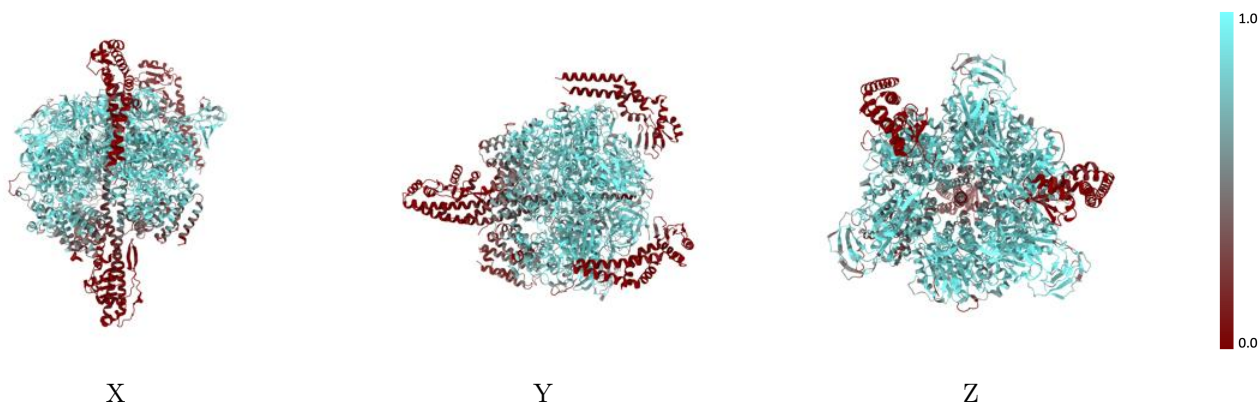
The images above show the 3D surface view of the map at the recommended contour level 0.033 at 50% transparency in yellow overlaid with a ribbon representation of the model coloured in blue. These images allow for the visual assessment of the quality of fit between the atomic model and the map.

9.2 Q-score mapped to coordinate model [i](#)



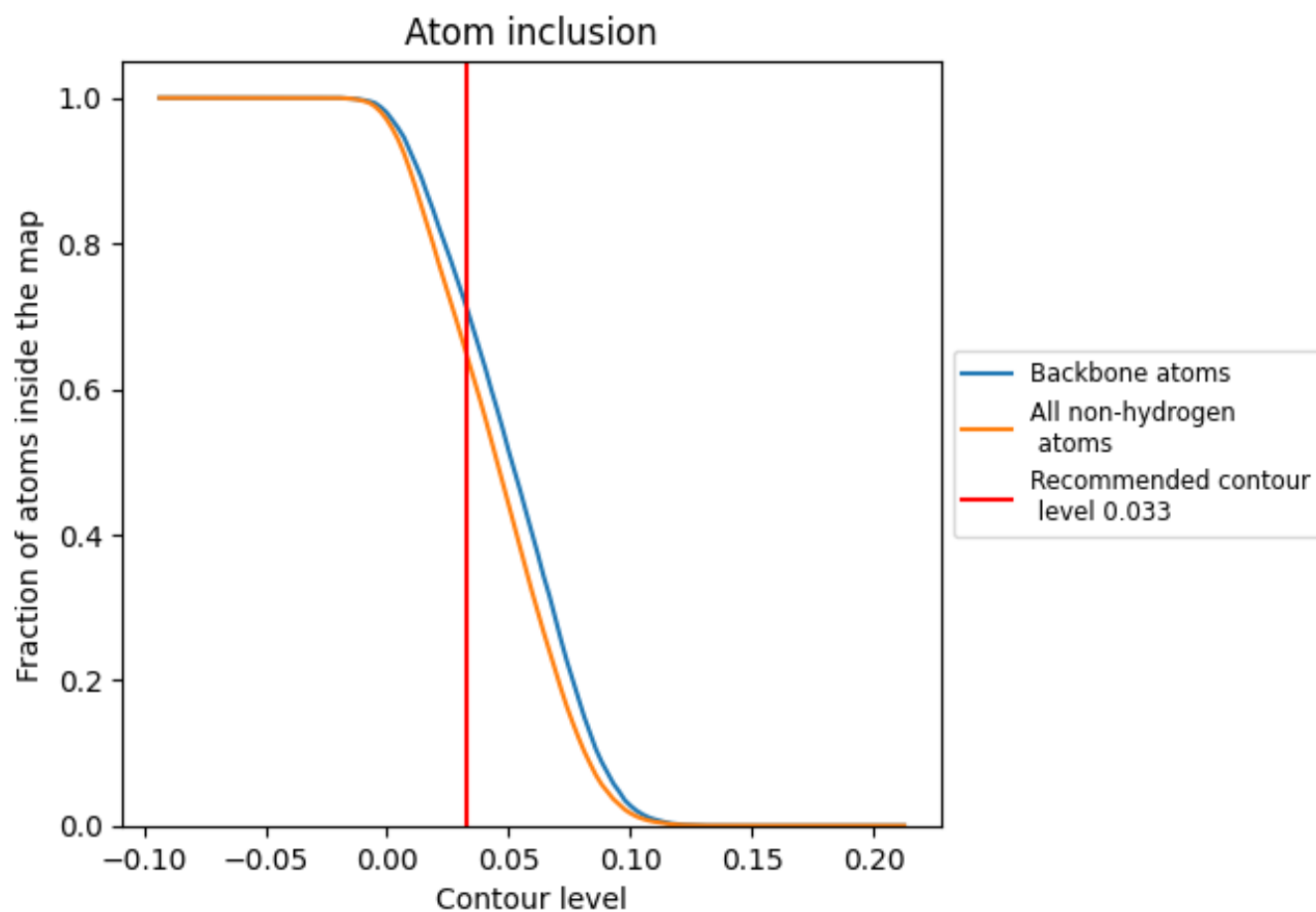
The images above show the model with each residue coloured according to its Q-score. This shows their resolvability in the map with higher Q-score values reflecting better resolvability. Please note: Q-score is calculating the resolvability of atoms, and thus high values are only expected at resolutions at which atoms can be resolved. Low Q-score values may therefore be expected for many entries.

9.3 Atom inclusion mapped to coordinate model [i](#)



The images above show the model with each residue coloured according to its atom inclusion. This shows to what extent they are inside the map at the recommended contour level (0.033).

























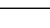
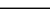
9.4 Atom inclusion [i](#)



At the recommended contour level, 71% of all backbone atoms, 64% of all non-hydrogen atoms, are inside the map.

9.5 Map-model fit summary

The table lists the average atom inclusion at the recommended contour level (0.033) and Q-score for the entire model and for each chain.

Chain	Atom inclusion	Q-score
All	 0.6450	 0.5180
A	 0.7656	 0.5830
B	 0.6233	 0.5280
C	 0.8126	 0.6000
D	 0.7693	 0.5790
E	 0.7726	 0.5820
F	 0.8130	 0.6060
G	 0.2164	 0.2810
H	 0.0039	 0.0930
I	 0.0298	 0.2170
J	 0.0507	 0.2180
K	 0.0000	 0.1360
L	 0.0442	 0.2410

