



Full wwPDB EM Validation Report ⓘ

Jun 11, 2024 – 05:23 PM JST

PDB ID : 7VDD
EMDB ID : EMD-31914
Title : Human TOM complex with cross-linking
Authors : Liu, D.S.; Sui, S.F.
Deposited on : 2021-09-06
Resolution : 3.74 Å (reported)

This is a Full wwPDB EM Validation Report for a publicly released PDB entry.

We welcome your comments at validation@mail.wwpdb.org

A user guide is available at

<https://www.wwpdb.org/validation/2017/EMValidationReportHelp>

with specific help available everywhere you see the ⓘ symbol.

The types of validation reports are described at

<http://www.wwpdb.org/validation/2017/FAQs#types>.

The following versions of software and data (see [references ⓘ](#)) were used in the production of this report:

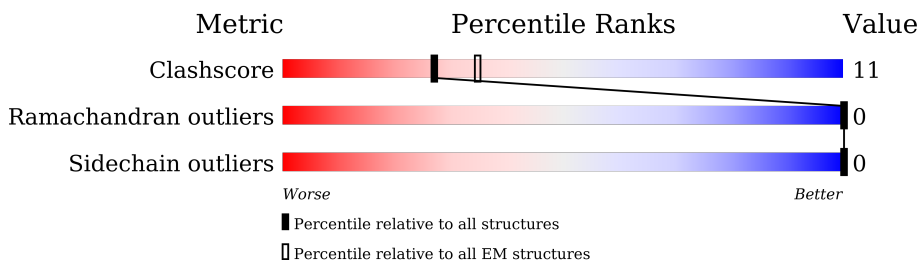
EMDB validation analysis : 0.0.1.dev92
MolProbity : 4.02b-467
Percentile statistics : 20191225.v01 (using entries in the PDB archive December 25th 2019)
MapQ : 1.9.13
Ideal geometry (proteins) : Engh & Huber (2001)
Ideal geometry (DNA, RNA) : Parkinson et al. (1996)
Validation Pipeline (wwPDB-VP) : 2.36.2

1 Overall quality at a glance

The following experimental techniques were used to determine the structure:
ELECTRON MICROSCOPY

The reported resolution of this entry is 3.74 Å.

Percentile scores (ranging between 0-100) for global validation metrics of the entry are shown in the following graphic. The table shows the number of entries on which the scores are based.





Metric	Whole archive (#Entries)	EM structures (#Entries)
Clashscore	158937	4297
Ramachandran outliers	154571	4023
Sidechain outliers	154315	3826

The table below summarises the geometric issues observed across the polymeric chains and their fit to the map. The red, orange, yellow and green segments of the bar indicate the fraction of residues that contain outliers for ≥ 3 , 2, 1 and 0 types of geometric quality criteria respectively. A grey segment represents the fraction of residues that are not modelled. The numeric value for each fraction is indicated below the corresponding segment, with a dot representing fractions $\leq 5\%$. The upper red bar (where present) indicates the fraction of residues that have poor fit to the EM map (all-atom inclusion $< 40\%$). The numeric value is given above the bar.

Mol	Chain	Length	Quality of chain
1	A	74	
1	F	74	
2	C	142	
2	H	142	
3	D	51	
3	E	51	
4	G	55	
4	J	55	

Continued on next page...

Continued from previous page...

Mol	Chain	Length	Quality of chain
5	B	361	 60% 19% 21%
5	I	361	 59% 20% 21%

2 Entry composition

There are 5 unique types of molecules in this entry. The entry contains 11940 atoms, of which 3736 are hydrogens and 0 are deuteriums.

In the tables below, the AltConf column contains the number of residues with at least one atom in alternate conformation and the Trace column contains the number of residues modelled with at most 2 atoms.

- Molecule 1 is a protein called Mitochondrial import receptor subunit TOM6 homolog.

Mol	Chain	Residues	Atoms					AltConf	Trace
			Total	C	H	N	O		
1	A	42	Total	C	H	N	O	0	0
			694	225	344	66	59		
1	F	42	Total	C	H	N	O	0	0
			696	225	346	66	59		

- Molecule 2 is a protein called Mitochondrial import receptor subunit TOM22 homolog.

Mol	Chain	Residues	Atoms					AltConf	Trace	
			Total	C	H	N	O			S
2	C	105	Total	C	H	N	O	S	0	0
			1570	522	737	137	170	4		
2	H	105	Total	C	H	N	O	S	0	0
			1570	522	737	137	170	4		

- Molecule 3 is a protein called Mitochondrial import receptor subunit TOM5 homolog.

Mol	Chain	Residues	Atoms					AltConf	Trace	
			Total	C	H	N	O			S
3	D	34	Total	C	H	N	O	S	0	0
			613	190	325	51	45	2		
3	E	34	Total	C	H	N	O	S	0	0
			613	190	325	51	45	2		

- Molecule 4 is a protein called Mitochondrial import receptor subunit TOM7 homolog.

Mol	Chain	Residues	Atoms					AltConf	Trace	
			Total	C	H	N	O			S
4	G	55	Total	C	H	N	O	S	0	0
			898	294	457	75	70	2		
4	J	55	Total	C	H	N	O	S	0	0
			906	294	465	75	70	2		

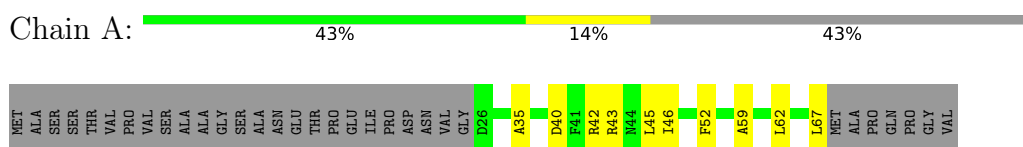
- Molecule 5 is a protein called Mitochondrial import receptor subunit TOM40 homolog.

Mol	Chain	Residues	Atoms					AltConf	Trace
			Total	C	N	O	S		
5	B	286	2190	1393	376	410	11	0	0
5	I	286	2190	1393	376	410	11	0	0

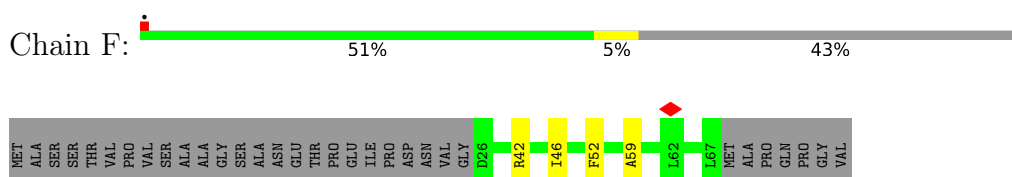
3 Residue-property plots [i](#)

These plots are drawn for all protein, RNA, DNA and oligosaccharide chains in the entry. The first graphic for a chain summarises the proportions of the various outlier classes displayed in the second graphic. The second graphic shows the sequence view annotated by issues in geometry and atom inclusion in map density. Residues are color-coded according to the number of geometric quality criteria for which they contain at least one outlier: green = 0, yellow = 1, orange = 2 and red = 3 or more. A red diamond above a residue indicates a poor fit to the EM map for this residue (all-atom inclusion < 40%). Stretches of 2 or more consecutive residues without any outlier are shown as a green connector. Residues present in the sample, but not in the model, are shown in grey.

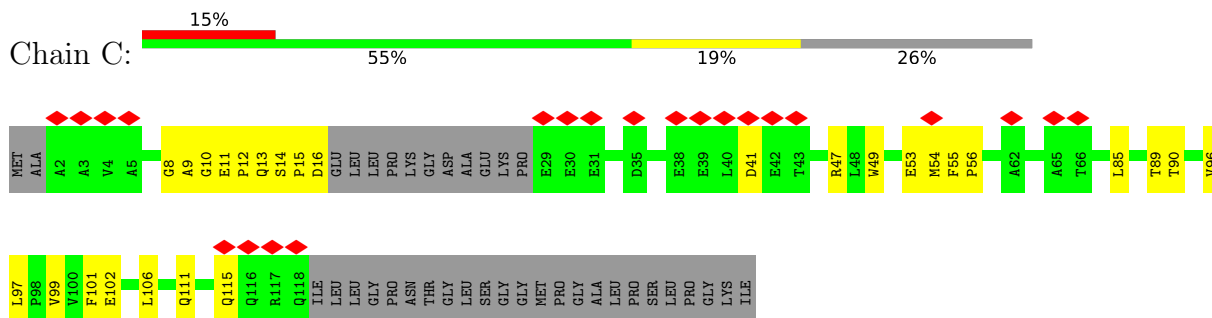
- Molecule 1: Mitochondrial import receptor subunit TOM6 homolog



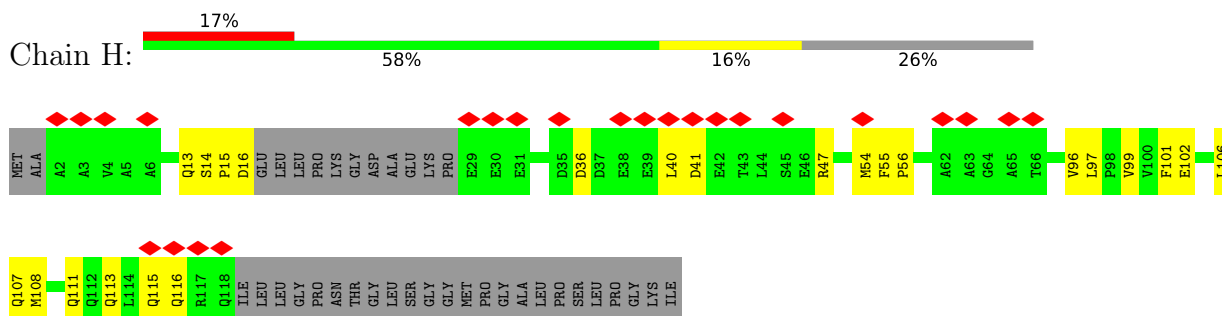
- Molecule 1: Mitochondrial import receptor subunit TOM6 homolog



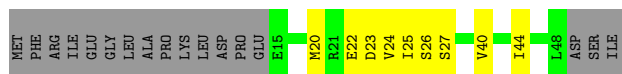
- Molecule 2: Mitochondrial import receptor subunit TOM22 homolog



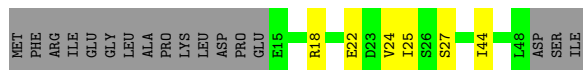
- Molecule 2: Mitochondrial import receptor subunit TOM22 homolog



• Molecule 3: Mitochondrial import receptor subunit TOM5 homolog



• Molecule 3: Mitochondrial import receptor subunit TOM5 homolog



• Molecule 4: Mitochondrial import receptor subunit TOM7 homolog



• Molecule 4: Mitochondrial import receptor subunit TOM7 homolog



• Molecule 5: Mitochondrial import receptor subunit TOM40 homolog



• Molecule 5: Mitochondrial import receptor subunit TOM40 homolog



MET	
GLY	
ASN	
VAL	
LEU	
ALA	
ALA	
SER	
SER	
SER	
PRO	
PRO	
ALA	
GLY	
PRO	
PRO	
PRO	
PRO	
ALA	
PRO	
ALA	
LEU	
VAL	
GLY	
LEU	
PRO	
PRO	
PRO	
PRO	
PRO	
PRO	
SER	
PRO	
PRO	
GLY	
PHE	
THR	
LEU	
PRO	
PRO	
LEU	
GLY	
ALA	
GLY	
THR	
SER	
THR	
SER	
ARG	
SER	
SER	
GLU	
ARG	
THR	
PRO	
GLY	
ALA	
ALA	
THR	
SER	
VAL	
LEU	
LEU	
GLY	
ALA	
ALA	
GLY	
ALA	
ALA	
GLU	
ASP	
GLY	
ALA	
ALA	
CYS	
GLY	
C76	
L77	
T82	
F83	
E84	
E85	
R88	
E92	
L93	
F94	
P95	
V101	
I124	
G125	
V133	
T134	
Y135	
V136	
G137	
Q140	
L141	
S142	
F143	
A146	
L160	
M161	
Q167	
L172	
R173	
S174	
K175	
Q181	
Q182	
W188	
G196	
F199	
L205	
G206	
N207	
P208	
L211	
V212	
S224	
T225	
T226	
P227	
V236	
R240	
P241	
G242	
E243	
E244	
G245	
T246	
V247	
N248	
S249	
L250	
L256	
N257	
N258	
N259	
G269	
D280	
Q281	
V284	
G285	
V286	
A290	
T297	
S300	
Q304	
L305	
D306	
L307	
L312	
L313	
S317	
T327	
L328	
A340	
L341	
F356	
L360	
G361	

4 Experimental information

Property	Value	Source
EM reconstruction method	SINGLE PARTICLE	Depositor
Imposed symmetry	POINT, Not provided	
Number of particles used	340000	Depositor
Resolution determination method	FSC 0.143 CUT-OFF	Depositor
CTF correction method	PHASE FLIPPING AND AMPLITUDE CORRECTION	Depositor
Microscope	FEI TITAN KRIOS	Depositor
Voltage (kV)	300	Depositor
Electron dose ($e^-/\text{\AA}^2$)	50	Depositor
Minimum defocus (nm)	1300	Depositor
Maximum defocus (nm)	1800	Depositor
Magnification	Not provided	
Image detector	GATAN K3 (6k x 4k)	Depositor
Maximum map value	0.028	Depositor
Minimum map value	-0.006	Depositor
Average map value	0.000	Depositor
Map value standard deviation	0.002	Depositor
Recommended contour level	0.0111	Depositor
Map size (Å)	277.12, 277.12, 277.12	wwPDB
Map dimensions	256, 256, 256	wwPDB
Map angles (°)	90.0, 90.0, 90.0	wwPDB
Pixel spacing (Å)	1.0825, 1.0825, 1.0825	Depositor

5 Model quality [i](#)

5.1 Standard geometry [i](#)

The Z score for a bond length (or angle) is the number of standard deviations the observed value is removed from the expected value. A bond length (or angle) with $|Z| > 5$ is considered an outlier worth inspection. RMSZ is the root-mean-square of all Z scores of the bond lengths (or angles).

Mol	Chain	Bond lengths		Bond angles	
		RMSZ	# Z >5	RMSZ	# Z >5
1	A	0.26	0/357	0.42	0/483
1	F	0.26	0/357	0.40	0/483
2	C	0.36	0/845	0.53	1/1140 (0.1%)
2	H	0.36	0/845	0.53	1/1140 (0.1%)
3	D	0.27	0/291	0.40	0/387
3	E	0.27	0/291	0.38	0/387
4	G	0.42	0/453	0.52	0/609
4	J	0.38	0/453	0.50	0/609
5	B	0.35	0/2240	0.46	0/3039
5	I	0.36	0/2240	0.47	0/3039
All	All	0.35	0/8372	0.47	2/11316 (0.0%)

There are no bond length outliers.

All (2) bond angle outliers are listed below:

Mol	Chain	Res	Type	Atoms	Z	Observed(°)	Ideal(°)
2	C	56	PRO	N-CA-CB	5.73	110.17	103.30
2	H	56	PRO	N-CA-CB	5.72	110.16	103.30

There are no chirality outliers.

There are no planarity outliers.

5.2 Too-close contacts [i](#)

In the following table, the Non-H and H(model) columns list the number of non-hydrogen atoms and hydrogen atoms in the chain respectively. The H(added) column lists the number of hydrogen atoms added and optimized by MolProbity. The Clashes column lists the number of clashes within the asymmetric unit, whereas Symm-Clashes lists symmetry-related clashes.

Mol	Chain	Non-H	H(model)	H(added)	Clashes	Symm-Clashes
1	A	350	344	346	10	0

Continued on next page...

Continued from previous page...

Mol	Chain	Non-H	H(model)	H(added)	Clashes	Symm-Clashes
1	F	350	346	346	4	0
2	C	833	737	792	24	0
2	H	833	737	792	16	0
3	D	288	325	325	7	0
3	E	288	325	325	4	0
4	G	441	457	468	4	0
4	J	441	465	468	5	0
5	B	2190	0	2171	63	0
5	I	2190	0	2171	64	0
All	All	8204	3736	8204	179	0

The all-atom clashscore is defined as the number of clashes found per 1000 atoms (including hydrogen atoms). The all-atom clashscore for this structure is 11.

All (179) close contacts within the same asymmetric unit are listed below, sorted by their clash magnitude.

Atom-1	Atom-2	Interatomic distance (Å)	Clash overlap (Å)
5:B:304:GLN:HE21	5:B:313:LEU:HD11	1.30	0.95
5:I:304:GLN:HE21	5:I:313:LEU:HD11	1.31	0.93
2:C:14:SER:HB3	2:C:15:PRO:HD3	1.56	0.88
5:I:205:LEU:HG	5:I:208:PRO:HG3	1.58	0.86
5:B:106:ASN:HB2	5:B:361:GLY:HA2	1.63	0.80
2:H:14:SER:HB3	2:H:15:PRO:HD3	1.65	0.78
3:D:20:MET:CE	5:I:244:GLU:HB2	2.16	0.75
5:I:84:GLU:OE2	5:I:88:ARG:NE	2.22	0.73
2:H:108:MET:CE	5:B:334:PRO:HG2	2.19	0.72
2:C:41:ASP:OD2	2:C:47:ARG:NE	2.21	0.72
5:I:142:SER:HB2	5:I:143:PRO:HD2	1.70	0.71
2:H:13:GLN:HA	2:H:16:ASP:HB3	1.72	0.71
5:I:82:THR:OG1	5:I:85:GLU:HG3	1.93	0.67
5:B:85:GLU:HA	5:B:88:ARG:HG2	1.76	0.67
5:I:249:SER:O	5:I:250:LEU:HD23	1.93	0.67
5:I:88:ARG:O	5:I:92:GLU:HG2	1.95	0.67
2:H:111:GLN:O	2:H:115:GLN:NE2	2.28	0.66
5:B:140:GLN:HG2	5:B:146:ALA:HB2	1.76	0.66
5:I:77:LEU:HD13	5:I:224:SER:O	1.96	0.66
5:B:124:ILE:HG13	5:B:125:GLY:N	2.12	0.64
2:C:13:GLN:HA	2:C:16:ASP:HB3	1.81	0.63
5:B:172:LEU:HD12	5:B:173:ARG:N	2.14	0.63
2:C:9:ALA:O	2:C:12:PRO:HG2	1.99	0.63
3:D:20:MET:HE2	5:I:244:GLU:HB2	1.79	0.63

Continued on next page...

Continued from previous page...

Atom-1	Atom-2	Interatomic distance (Å)	Clash overlap (Å)
5:I:172:LEU:HD12	5:I:173:ARG:N	2.14	0.63
2:C:106:LEU:HD12	5:B:310:ALA:HB2	1.81	0.62
5:B:85:GLU:HA	5:B:88:ARG:CG	2.29	0.62
5:B:141:LEU:HD21	5:B:145:GLU:HB2	1.81	0.62
1:F:42:ARG:O	1:F:46:ILE:HD12	2.00	0.61
5:I:172:LEU:HD12	5:I:173:ARG:H	1.66	0.61
5:B:249:SER:O	5:B:250:LEU:HD23	2.00	0.61
5:B:82:THR:HG22	5:B:85:GLU:CD	2.20	0.60
5:B:172:LEU:HD12	5:B:173:ARG:H	1.66	0.60
5:B:214:SER:HA	5:B:239:ARG:O	2.01	0.60
5:B:360:ILE:HG22	5:B:360:ILE:O	2.01	0.60
5:I:304:GLN:NE2	5:I:313:LEU:HD11	2.12	0.60
5:B:256:LEU:HG	5:B:257:ASN:H	1.67	0.60
5:B:141:LEU:HD21	5:B:145:GLU:CB	2.31	0.60
5:I:124:ILE:HG13	5:I:125:GLY:N	2.16	0.59
5:B:304:GLN:HE21	5:B:313:LEU:CD1	2.12	0.58
5:B:306:ASP:O	5:B:307:LEU:HD23	2.03	0.58
2:H:41:ASP:OD2	2:H:47:ARG:NE	2.33	0.57
5:I:140:GLN:HG2	5:I:146:ALA:HB2	1.87	0.57
5:I:95:PRO:HD2	5:I:317:SER:HB3	1.87	0.56
2:H:102:GLU:HG3	5:I:312:LEU:HD22	1.88	0.56
5:B:95:PRO:HD2	5:B:317:SER:HB3	1.88	0.56
5:I:240:ARG:HB3	5:I:241:PRO:HD2	1.86	0.56
5:B:124:ILE:HG13	5:B:125:GLY:H	1.72	0.55
5:I:236:VAL:O	5:I:246:THR:HA	2.06	0.55
2:C:9:ALA:O	2:C:12:PRO:HD2	2.07	0.55
1:A:62:LEU:HD12	1:A:62:LEU:O	2.06	0.55
1:A:67:LEU:HD11	2:H:106:LEU:HD22	1.87	0.55
5:I:304:GLN:HE21	5:I:313:LEU:CD1	2.12	0.55
5:I:306:ASP:O	5:I:307:LEU:HD23	2.06	0.55
1:A:35:ALA:O	1:A:43:ARG:NE	2.39	0.54
4:G:48:THR:O	4:G:51:SER:N	2.39	0.54
5:I:240:ARG:HB3	5:I:241:PRO:CD	2.37	0.54
2:H:54:MET:SD	2:H:55:PHE:N	2.81	0.54
5:B:304:GLN:NE2	5:B:313:LEU:HD11	2.12	0.54
2:C:102:GLU:HG3	5:B:312:LEU:HD22	1.90	0.53
5:I:212:VAL:HG12	5:I:212:VAL:O	2.08	0.53
5:I:160:LEU:HD12	5:I:161:ASN:H	1.73	0.53
5:I:280:ASP:OD1	5:I:281:GLN:HG3	2.08	0.53
5:B:105:VAL:O	5:B:116:ASN:HA	2.09	0.53
5:B:209:ASP:CG	5:B:212:VAL:HG22	2.28	0.53

Continued on next page...

Continued from previous page...

Atom-1	Atom-2	Interatomic distance (Å)	Clash overlap (Å)
5:B:280:ASP:OD1	5:B:281:GLN:HG3	2.09	0.53
1:A:42:ARG:O	1:A:46:ILE:HD12	2.08	0.52
5:I:196:GLY:HA3	5:I:199:PHE:CE1	2.44	0.52
2:C:14:SER:HB3	2:C:15:PRO:CD	2.36	0.52
5:I:135:TYR:CE2	5:I:137:GLY:HA2	2.45	0.52
2:C:54:MET:SD	2:C:55:PHE:N	2.83	0.52
4:J:31:VAL:HG11	5:B:133:VAL:HG23	1.92	0.52
2:H:108:MET:HE3	5:B:334:PRO:HG2	1.91	0.51
2:C:85:LEU:O	2:C:89:THR:HG22	2.10	0.51
1:A:59:ALA:HB1	5:I:284:VAL:HG21	1.92	0.51
5:B:240:ARG:HB3	5:B:241:PRO:HD2	1.92	0.51
5:B:240:ARG:HB3	5:B:241:PRO:CD	2.39	0.50
2:H:106:LEU:HD23	2:H:107:GLN:N	2.27	0.50
5:B:106:ASN:HD22	5:B:116:ASN:HB3	1.77	0.50
2:H:99:VAL:HG21	5:I:305:LEU:HD13	1.94	0.50
2:C:14:SER:CB	2:C:15:PRO:HD3	2.37	0.49
2:C:97:LEU:HD21	2:C:101:PHE:CE2	2.47	0.49
5:I:167:GLN:HG3	5:I:172:LEU:O	2.13	0.49
5:I:249:SER:C	5:I:250:LEU:HD23	2.33	0.49
1:A:45:LEU:HD22	5:I:297:THR:HG21	1.95	0.49
3:D:24:VAL:O	3:D:27:SER:OG	2.26	0.49
5:I:257:ASN:O	5:I:258:ASN:OD1	2.31	0.49
2:H:108:MET:HE1	5:B:334:PRO:HG2	1.93	0.48
5:B:236:VAL:O	5:B:246:THR:HA	2.13	0.48
2:C:8:GLY:O	2:C:12:PRO:CD	2.62	0.48
2:C:9:ALA:C	2:C:12:PRO:HD2	2.34	0.48
3:E:24:VAL:O	3:E:27:SER:OG	2.28	0.48
2:C:8:GLY:O	2:C:12:PRO:HD3	2.13	0.48
2:H:113:GLN:O	2:H:116:GLN:NE2	2.43	0.48
5:B:181:GLN:O	5:B:182:GLN:C	2.52	0.48
2:C:99:VAL:HG21	5:B:305:LEU:HD13	1.96	0.48
5:I:174:SER:OG	5:I:175:LYS:N	2.47	0.48
5:I:181:GLN:O	5:I:182:GLN:C	2.52	0.47
1:A:40:ASP:OD2	1:A:43:ARG:N	2.42	0.47
5:I:256:LEU:HD12	5:I:259:TRP:HZ2	1.80	0.47
5:I:240:ARG:NH2	5:I:243:GLU:HG3	2.30	0.47
5:I:188:TRP:NE1	5:I:208:PRO:HD2	2.30	0.47
5:I:141:LEU:HD12	5:I:167:GLN:NE2	2.30	0.46
1:A:46:ILE:HD12	1:A:46:ILE:H	1.81	0.46
5:B:82:THR:HG23	5:B:85:GLU:H	1.80	0.46
5:B:237:TYR:HD1	5:B:246:THR:HG22	1.79	0.46

Continued on next page...

Continued from previous page...

Atom-1	Atom-2	Interatomic distance (Å)	Clash overlap (Å)
4:J:52:LEU:C	4:J:52:LEU:HD12	2.36	0.46
3:D:44:ILE:HD12	3:D:44:ILE:H	1.80	0.46
4:G:31:VAL:HG11	5:I:133:VAL:HG23	1.97	0.46
5:B:291:SER:HB3	5:B:296:ASP:OD1	2.15	0.46
3:E:44:ILE:HD12	3:E:44:ILE:H	1.80	0.46
2:H:96:VAL:O	2:H:99:VAL:HG12	2.16	0.46
5:I:341:LEU:HD23	5:I:356:PHE:CB	2.46	0.46
5:I:328:LEU:O	5:I:340:ALA:HA	2.16	0.46
5:B:141:LEU:HD23	5:B:145:GLU:O	2.17	0.45
5:B:248:MET:HG2	5:B:249:SER:N	2.31	0.45
5:I:207:ASN:N	5:I:208:PRO:HD3	2.30	0.45
2:C:9:ALA:O	2:C:12:PRO:CG	2.62	0.45
5:B:107:LYS:HE2	5:B:107:LYS:HB3	1.78	0.45
5:B:196:GLY:HA3	5:B:199:PHE:CE1	2.51	0.45
2:C:11:GLU:N	2:C:12:PRO:HD2	2.32	0.45
4:J:31:VAL:HG11	5:B:133:VAL:CG2	2.47	0.45
5:B:341:LEU:HD23	5:B:356:PHE:CB	2.46	0.45
5:I:248:MET:HG2	5:I:249:SER:N	2.32	0.45
2:C:89:THR:HG23	2:C:90:THR:N	2.32	0.45
5:B:226:THR:HB	5:B:227:PRO:CD	2.48	0.44
2:C:96:VAL:O	2:C:99:VAL:HG12	2.17	0.44
5:B:328:LEU:O	5:B:340:ALA:HA	2.17	0.44
5:I:226:THR:HB	5:I:227:PRO:CD	2.48	0.44
5:B:164:VAL:O	5:B:175:LYS:HA	2.18	0.44
5:I:269:GLY:HA3	5:I:290:ALA:O	2.18	0.44
1:F:46:ILE:HD12	1:F:46:ILE:H	1.83	0.43
5:I:94:PHE:HE2	5:I:300:SER:HB3	1.82	0.43
1:A:45:LEU:CD2	5:I:297:THR:HG21	2.48	0.43
5:B:312:LEU:HD11	5:B:328:LEU:HG	2.01	0.43
5:B:120:ALA:HB3	5:B:128:ASN:OD1	2.19	0.43
3:D:23:ASP:O	3:D:26:SER:OG	2.36	0.43
5:B:249:SER:C	5:B:250:LEU:HD23	2.39	0.43
5:B:359:THR:HG22	5:B:361:GLY:H	1.83	0.43
5:I:136:VAL:CG1	5:I:146:ALA:HB3	2.48	0.42
5:B:141:LEU:HG	5:B:142:SER:N	2.34	0.42
5:I:95:PRO:HB2	5:I:327:THR:HG23	2.01	0.42
2:C:10:GLY:O	2:C:13:GLN:HB2	2.20	0.42
4:J:49:VAL:HG13	4:J:50:LEU:N	2.34	0.42
5:B:136:VAL:CG1	5:B:146:ALA:HB3	2.50	0.42
2:C:111:GLN:O	2:C:115:GLN:OE1	2.37	0.42
5:B:95:PRO:HB2	5:B:327:THR:HG23	2.01	0.42

Continued on next page...

Continued from previous page...

Atom-1	Atom-2	Interatomic distance (Å)	Clash overlap (Å)
5:B:140:GLN:HG2	5:B:146:ALA:CB	2.47	0.42
1:A:52:PHE:CD1	5:I:286:VAL:HG12	2.55	0.42
3:D:22:GLU:HA	3:D:25:ILE:HG12	2.01	0.42
5:I:188:TRP:CD1	5:I:208:PRO:HD2	2.54	0.42
2:H:97:LEU:HD21	2:H:101:PHE:HE2	1.85	0.41
5:B:269:GLY:HA3	5:B:290:ALA:O	2.19	0.41
5:I:85:GLU:HA	5:I:88:ARG:CG	2.50	0.41
5:I:141:LEU:C	5:I:141:LEU:HD23	2.41	0.41
3:E:18:ARG:O	3:E:22:GLU:OE1	2.38	0.41
4:J:22:ALA:O	4:J:26:GLY:N	2.48	0.41
5:I:141:LEU:HD12	5:I:167:GLN:CD	2.39	0.41
5:I:256:LEU:HD23	5:I:256:LEU:HA	1.88	0.41
3:E:22:GLU:HA	3:E:25:ILE:HG12	2.03	0.41
4:G:34:LEU:HD23	4:G:34:LEU:O	2.20	0.41
5:B:142:SER:HB2	5:B:143:PRO:HD2	2.01	0.41
5:I:312:LEU:HD11	5:I:328:LEU:HG	2.01	0.41
5:I:101:VAL:HA	5:I:356:PHE:O	2.21	0.41
4:G:31:VAL:HG11	5:I:133:VAL:CG2	2.50	0.41
2:C:49:TRP:NE1	2:C:53:GLU:OE2	2.54	0.41
1:F:52:PHE:CD1	5:B:286:VAL:HG12	2.56	0.41
1:F:59:ALA:HB1	5:B:284:VAL:HG21	2.01	0.41
5:B:341:LEU:HD23	5:B:356:PHE:HB2	2.02	0.41
5:I:341:LEU:HD23	5:I:356:PHE:HB2	2.01	0.41
5:I:94:PHE:CE2	5:I:300:SER:HB3	2.55	0.41
5:B:141:LEU:HD23	5:B:141:LEU:H	1.85	0.41
5:I:84:GLU:HG2	5:I:88:ARG:NH2	2.36	0.41
5:B:256:LEU:HA	5:B:256:LEU:HD12	1.73	0.40
2:C:101:PHE:HZ	5:I:360:ILE:HD11	1.86	0.40
3:D:40:VAL:HG22	3:D:40:VAL:O	2.21	0.40
2:H:36:ASP:O	2:H:40:LEU:N	2.45	0.40
5:I:124:ILE:HG13	5:I:125:GLY:H	1.83	0.40
5:B:141:LEU:HD21	5:B:145:GLU:HB3	2.01	0.40

There are no symmetry-related clashes.

5.3 Torsion angles [i](#)

5.3.1 Protein backbone [i](#)

In the following table, the Percentiles column shows the percent Ramachandran outliers of the chain as a percentile score with respect to all PDB entries followed by that with respect to all EM

entries.

The Analysed column shows the number of residues for which the backbone conformation was analysed, and the total number of residues.

Mol	Chain	Analysed	Favoured	Allowed	Outliers	Percentiles	
1	A	40/74 (54%)	38 (95%)	2 (5%)	0	100	100
1	F	40/74 (54%)	36 (90%)	4 (10%)	0	100	100
2	C	101/142 (71%)	100 (99%)	1 (1%)	0	100	100
2	H	101/142 (71%)	100 (99%)	1 (1%)	0	100	100
3	D	32/51 (63%)	32 (100%)	0	0	100	100
3	E	32/51 (63%)	31 (97%)	1 (3%)	0	100	100
4	G	53/55 (96%)	52 (98%)	1 (2%)	0	100	100
4	J	53/55 (96%)	52 (98%)	1 (2%)	0	100	100
5	B	284/361 (79%)	273 (96%)	11 (4%)	0	100	100
5	I	284/361 (79%)	273 (96%)	11 (4%)	0	100	100
All	All	1020/1366 (75%)	987 (97%)	33 (3%)	0	100	100

There are no Ramachandran outliers to report.

5.3.2 Protein sidechains [i](#)

In the following table, the Percentiles column shows the percent sidechain outliers of the chain as a percentile score with respect to all PDB entries followed by that with respect to all EM entries.

The Analysed column shows the number of residues for which the sidechain conformation was analysed, and the total number of residues.

Mol	Chain	Analysed	Rotameric	Outliers	Percentiles	
1	A	35/59 (59%)	35 (100%)	0	100	100
1	F	35/59 (59%)	35 (100%)	0	100	100
2	C	87/115 (76%)	87 (100%)	0	100	100
2	H	87/115 (76%)	87 (100%)	0	100	100
3	D	33/48 (69%)	33 (100%)	0	100	100
3	E	33/48 (69%)	33 (100%)	0	100	100
4	G	46/46 (100%)	46 (100%)	0	100	100
4	J	46/46 (100%)	46 (100%)	0	100	100

Continued on next page...

Continued from previous page...

Mol	Chain	Analysed	Rotameric	Outliers	Percentiles	
5	B	238/288 (83%)	238 (100%)	0	100	100
5	I	238/288 (83%)	238 (100%)	0	100	100
All	All	878/1112 (79%)	878 (100%)	0	100	100

There are no protein residues with a non-rotameric sidechain to report.

Sometimes sidechains can be flipped to improve hydrogen bonding and reduce clashes. All (3) such sidechains are listed below:

Mol	Chain	Res	Type
1	A	61	ASN
5	B	304	GLN
5	I	304	GLN

5.3.3 RNA [i](#)

There are no RNA molecules in this entry.

5.4 Non-standard residues in protein, DNA, RNA chains [i](#)

There are no non-standard protein/DNA/RNA residues in this entry.

5.5 Carbohydrates [i](#)

There are no monosaccharides in this entry.

5.6 Ligand geometry [i](#)

There are no ligands in this entry.

5.7 Other polymers [i](#)

There are no such residues in this entry.

5.8 Polymer linkage issues [i](#)

There are no chain breaks in this entry.

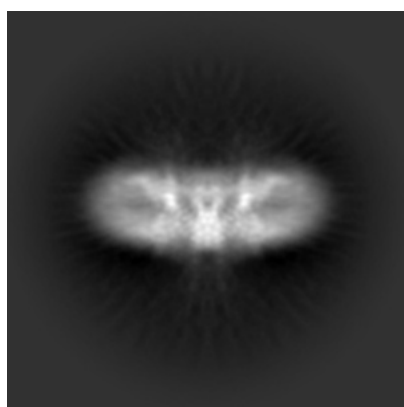
6 Map visualisation [i](#)

This section contains visualisations of the EMDB entry EMD-31914. These allow visual inspection of the internal detail of the map and identification of artifacts.

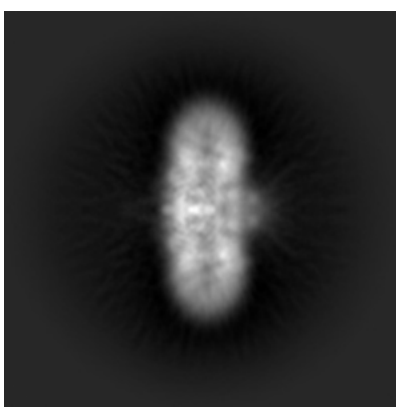
No raw map or half-maps were deposited for this entry and therefore no images, graphs, etc. pertaining to the raw map can be shown.

6.1 Orthogonal projections [i](#)

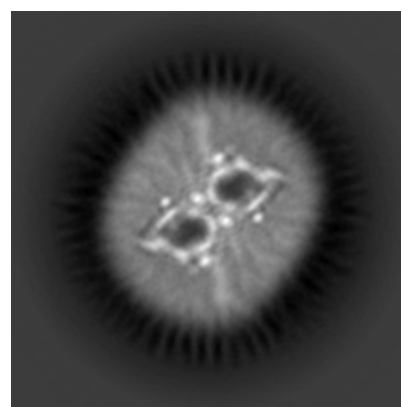
6.1.1 Primary map



X



Y

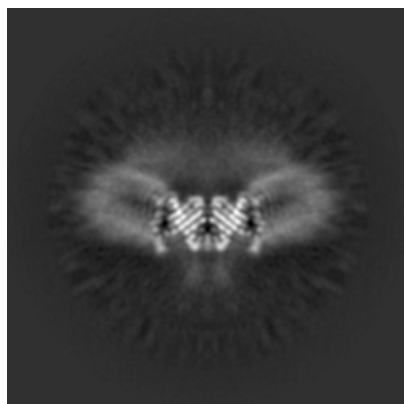


Z

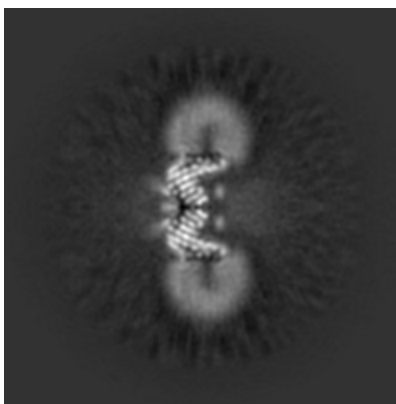
The images above show the map projected in three orthogonal directions.

6.2 Central slices [i](#)

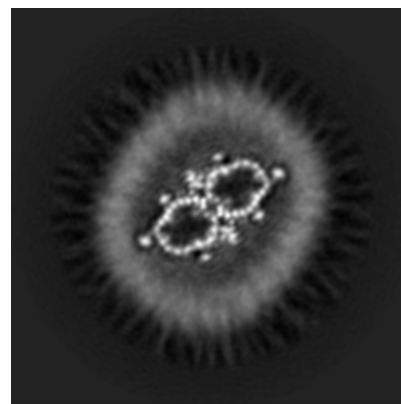
6.2.1 Primary map



X Index: 128



Y Index: 128

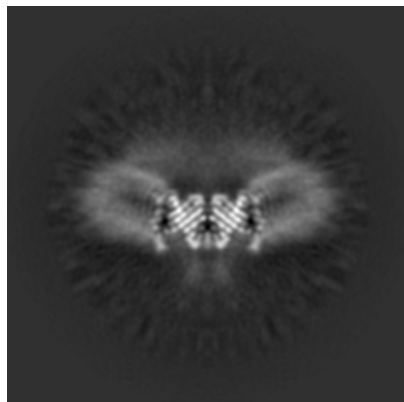


Z Index: 128

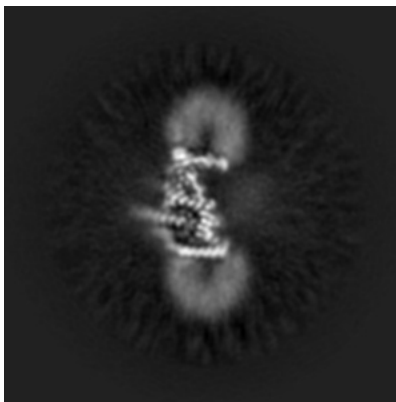
The images above show central slices of the map in three orthogonal directions.

6.3 Largest variance slices [i](#)

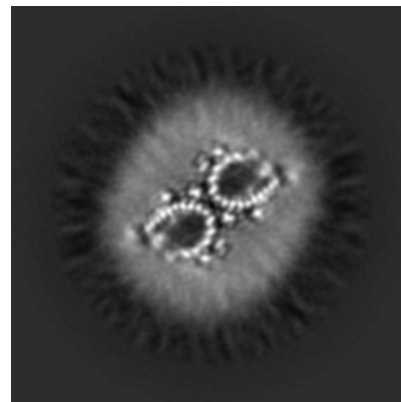
6.3.1 Primary map



X Index: 128



Y Index: 133

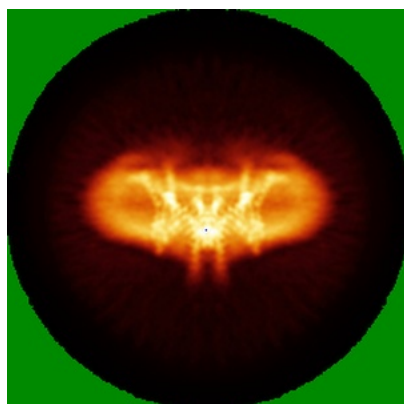


Z Index: 115

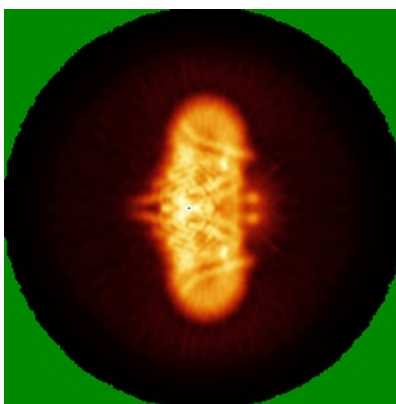
The images above show the largest variance slices of the map in three orthogonal directions.

6.4 Orthogonal standard-deviation projections (False-color) [i](#)

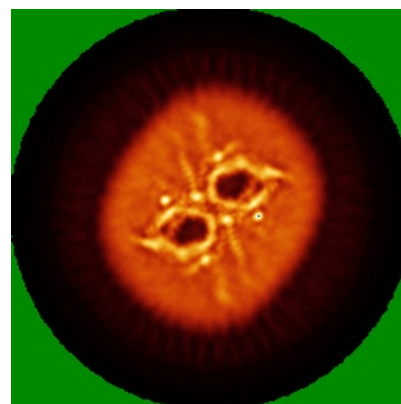
6.4.1 Primary map



X



Y



Z

The images above show the map standard deviation projections with false color in three orthogonal directions. Minimum values are shown in green, max in blue, and dark to light orange shades represent small to large values respectively.

6.5 Orthogonal surface views [i](#)

6.5.1 Primary map



The images above show the 3D surface view of the map at the recommended contour level 0.0111. These images, in conjunction with the slice images, may facilitate assessment of whether an appropriate contour level has been provided.

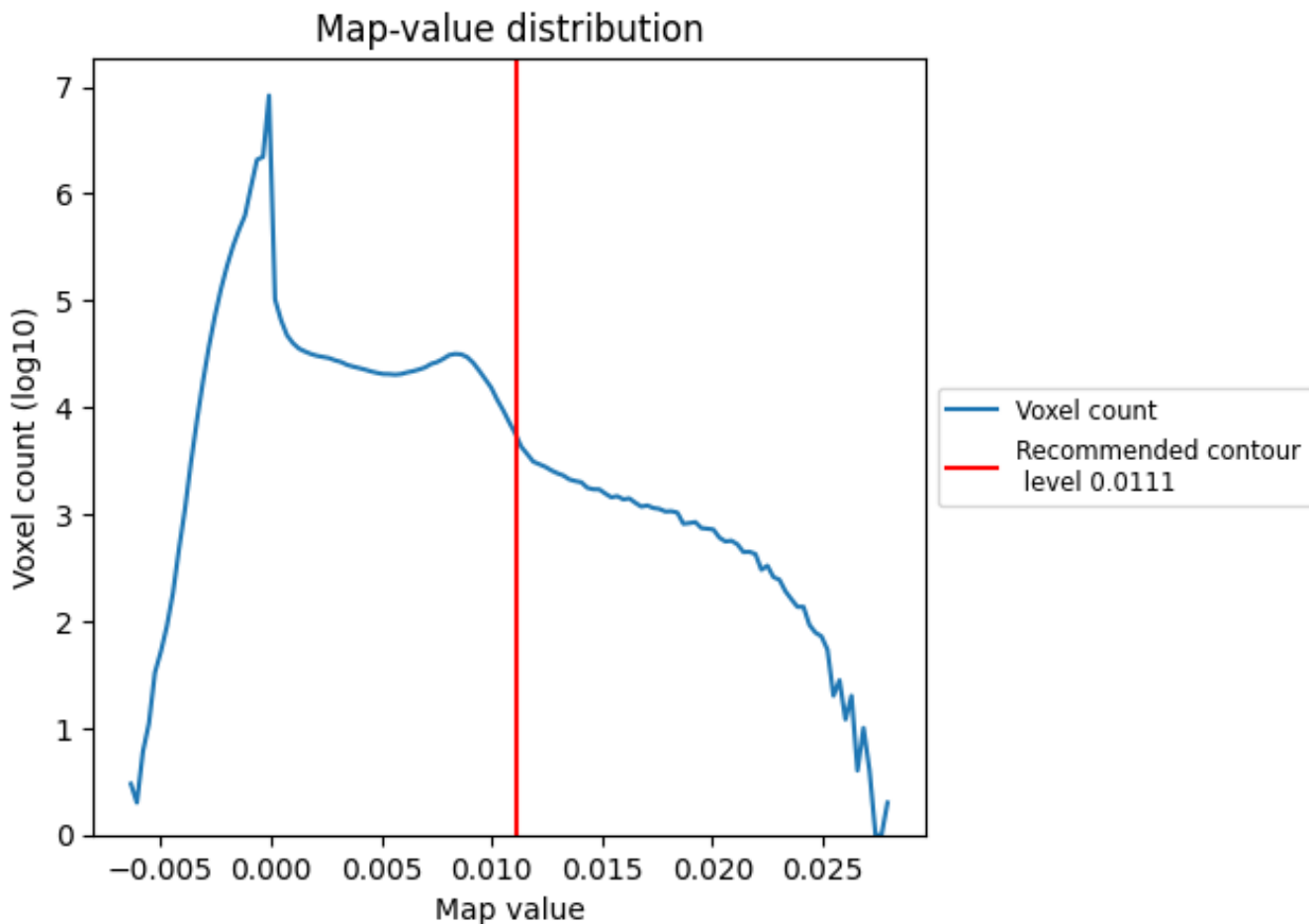
6.6 Mask visualisation [i](#)

This section was not generated. No masks/segmentation were deposited.

7 Map analysis [i](#)

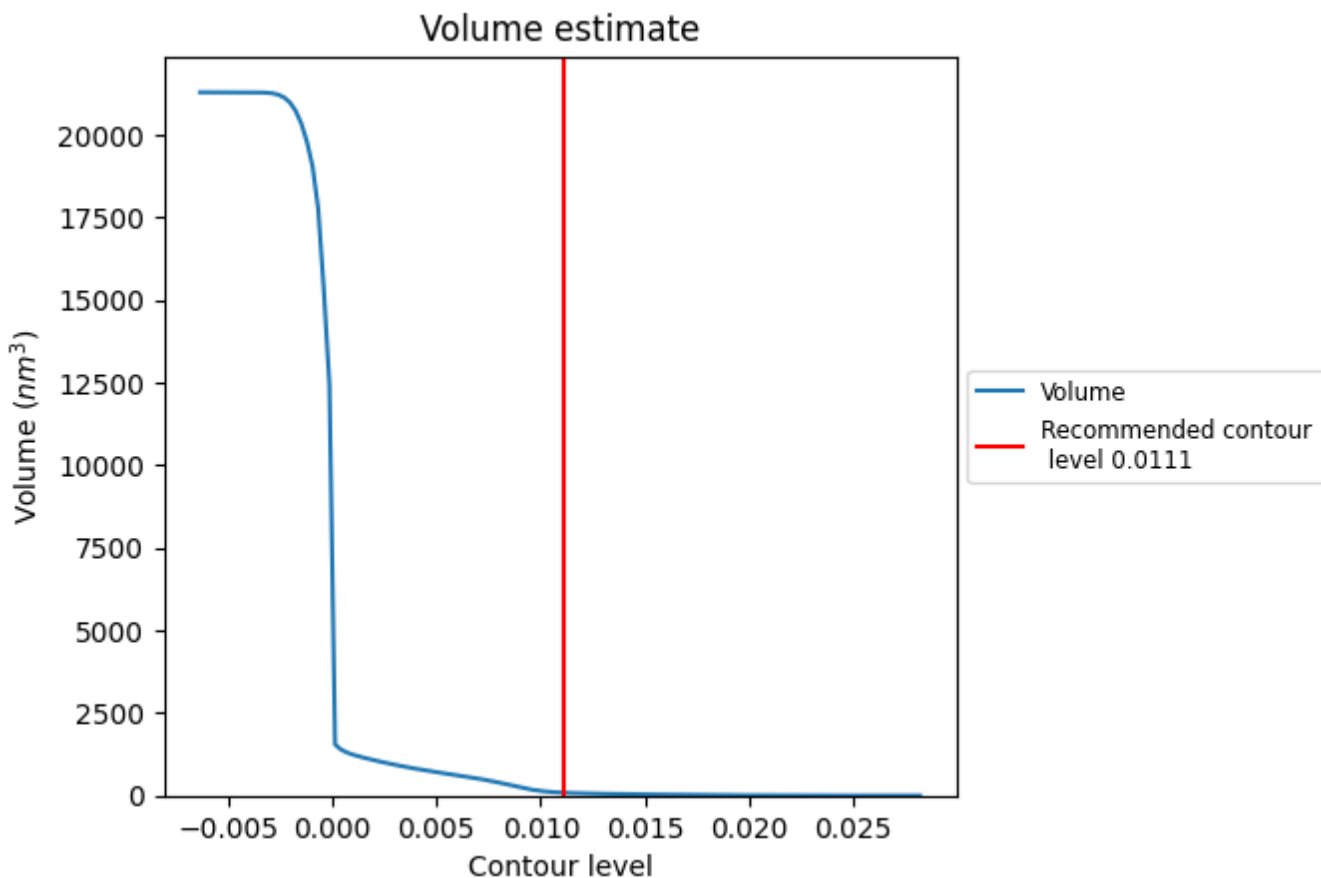
This section contains the results of statistical analysis of the map.

7.1 Map-value distribution [i](#)



The map-value distribution is plotted in 128 intervals along the x-axis. The y-axis is logarithmic. A spike in this graph at zero usually indicates that the volume has been masked.

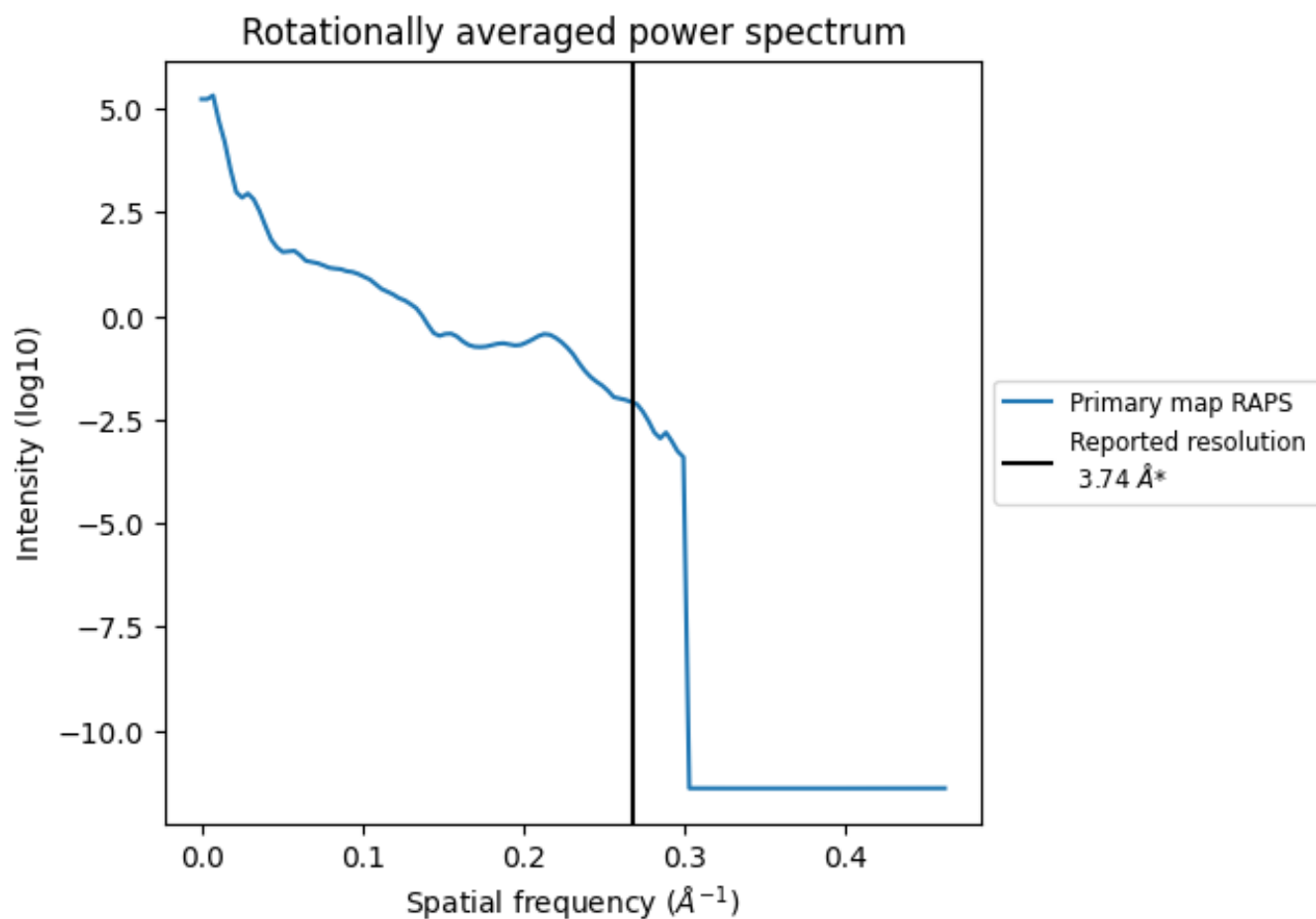
7.2 Volume estimate [i](#)



The volume at the recommended contour level is 85 nm³; this corresponds to an approximate mass of 77 kDa.

The volume estimate graph shows how the enclosed volume varies with the contour level. The recommended contour level is shown as a vertical line and the intersection between the line and the curve gives the volume of the enclosed surface at the given level.

7.3 Rotationally averaged power spectrum [i](#)



*Reported resolution corresponds to spatial frequency of 0.267 \AA^{-1}

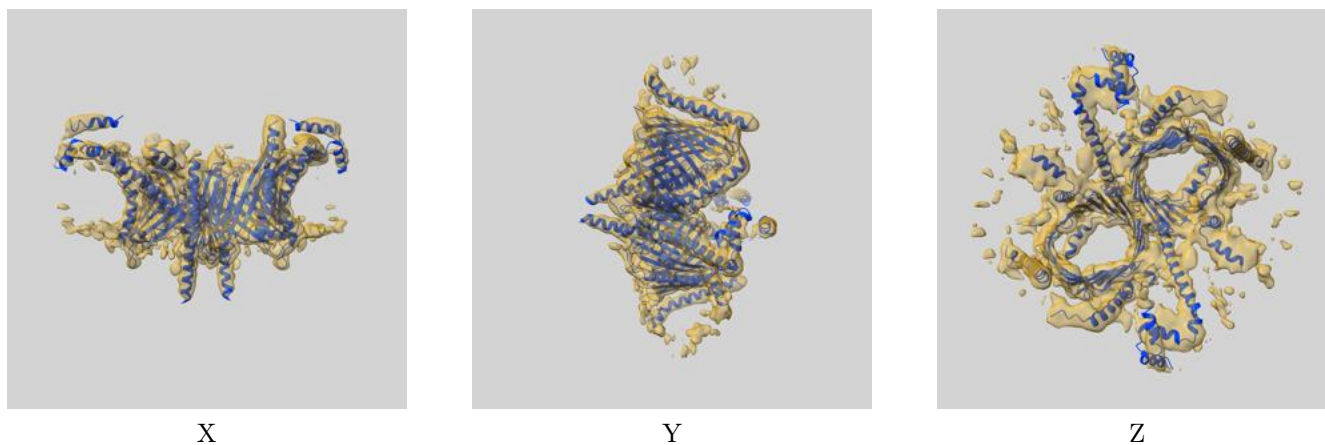
8 Fourier-Shell correlation

This section was not generated. No FSC curve or half-maps provided.

9 Map-model fit [i](#)

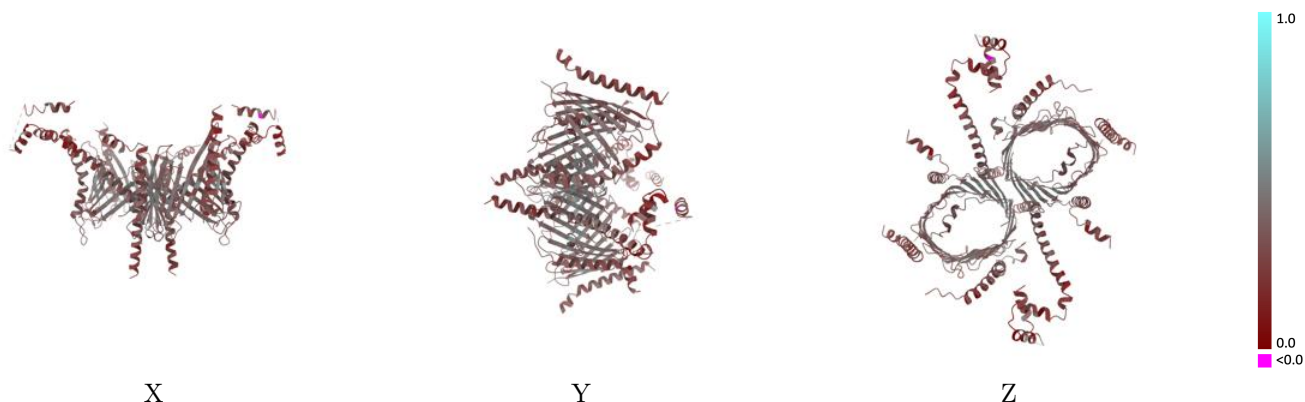
This section contains information regarding the fit between EMDB map EMD-31914 and PDB model 7VDD. Per-residue inclusion information can be found in section [3](#) on page [6](#).

9.1 Map-model overlay [i](#)



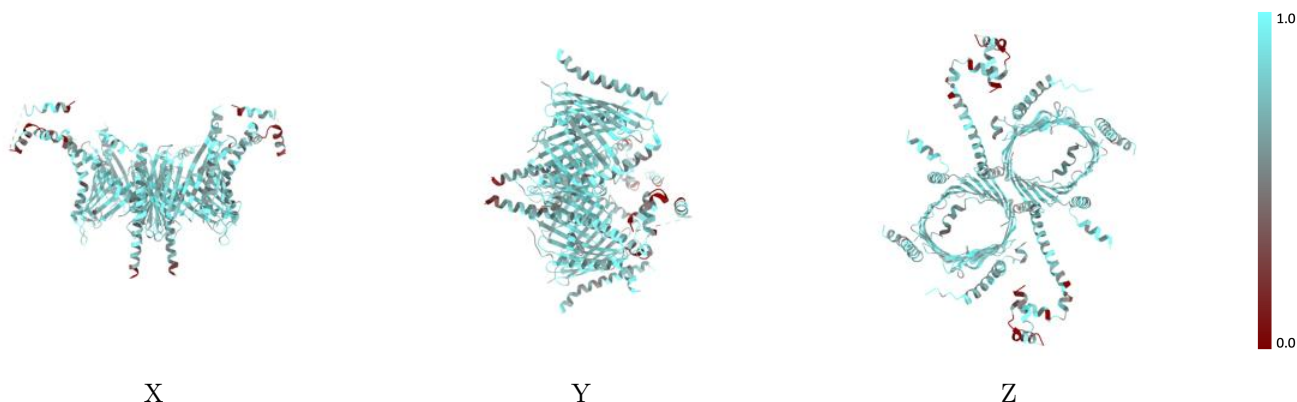
The images above show the 3D surface view of the map at the recommended contour level 0.0111 at 50% transparency in yellow overlaid with a ribbon representation of the model coloured in blue. These images allow for the visual assessment of the quality of fit between the atomic model and the map.

9.2 Q-score mapped to coordinate model [\(i\)](#)



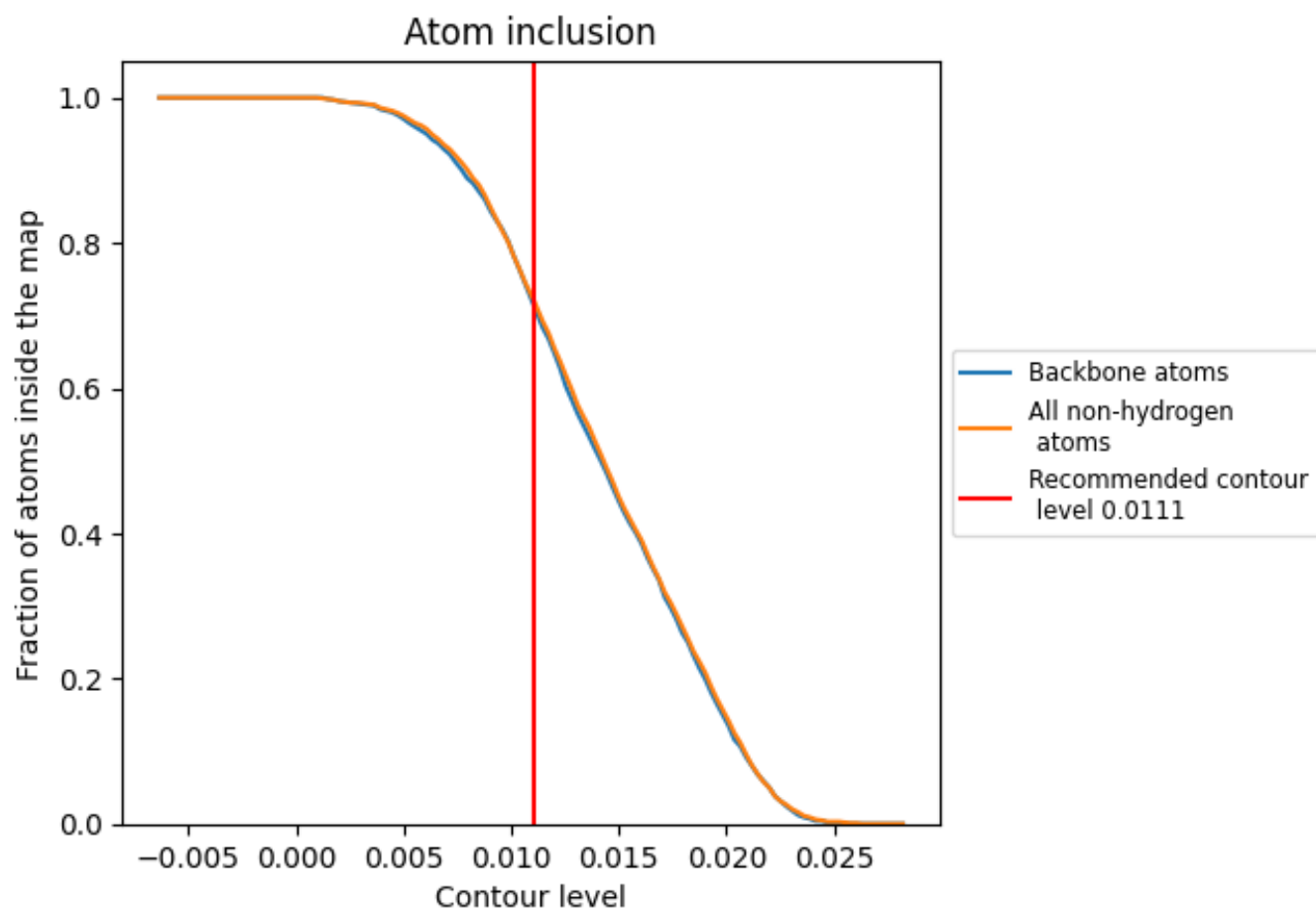
The images above show the model with each residue coloured according to its Q-score. This shows their resolvability in the map with higher Q-score values reflecting better resolvability. Please note: Q-score is calculating the resolvability of atoms, and thus high values are only expected at resolutions at which atoms can be resolved. Low Q-score values may therefore be expected for many entries.

9.3 Atom inclusion mapped to coordinate model [\(i\)](#)



The images above show the model with each residue coloured according to its atom inclusion. This shows to what extent they are inside the map at the recommended contour level (0.0111).























9.4 Atom inclusion [i](#)



At the recommended contour level, 71% of all backbone atoms, 72% of all non-hydrogen atoms, are inside the map.

9.5 Map-model fit summary [i](#)

The table lists the average atom inclusion at the recommended contour level (0.0111) and Q-score for the entire model and for each chain.

Chain	Atom inclusion	Q-score
All	 0.7180	 0.3320
A	 0.7820	 0.3090
B	 0.7630	 0.3770
C	 0.5890	 0.2580
D	 0.6920	 0.2560
E	 0.6990	 0.2630
F	 0.7670	 0.3050
G	 0.7040	 0.3050
H	 0.5860	 0.2640
I	 0.7680	 0.3790
J	 0.7200	 0.3070

