



# Full wwPDB X-ray Structure Validation Report ⓘ

Jun 14, 2020 – 07:21 am BST

PDB ID : 1VE5  
Title : Crystal Structure of T.th. HB8 Threonine deaminase  
Authors : Goto, M.; RIKEN Structural Genomics/Proteomics Initiative (RSGI)  
Deposited on : 2004-03-27  
Resolution : 2.15 Å(reported)

This is a Full wwPDB X-ray Structure Validation Report for a publicly released PDB entry.

We welcome your comments at [validation@mail.wwpdb.org](mailto:validation@mail.wwpdb.org)

A user guide is available at

<https://www.wwpdb.org/validation/2017/XrayValidationReportHelp>

with specific help available everywhere you see the ⓘ symbol.

---

The following versions of software and data (see [references ⓘ](#)) were used in the production of this report:

MolProbity : 4.02b-467  
Mogul : 1.8.5 (274361), CSD as541be (2020)  
Xtrriage (Phenix) : **NOT EXECUTED**  
EDS : **NOT EXECUTED**  
Percentile statistics : 20191225.v01 (using entries in the PDB archive December 25th 2019)  
Ideal geometry (proteins) : Engh & Huber (2001)  
Ideal geometry (DNA, RNA) : Parkinson et al. (1996)  
Validation Pipeline (wwPDB-VP) : 2.11

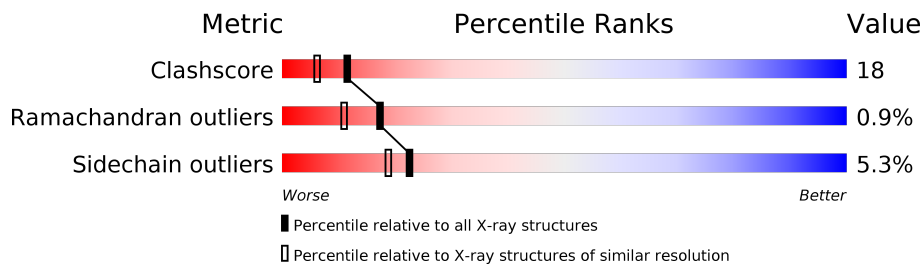
# 1 Overall quality at a glance

The following experimental techniques were used to determine the structure:

*X-RAY DIFFRACTION*

The reported resolution of this entry is 2.15 Å.

Percentile scores (ranging between 0-100) for global validation metrics of the entry are shown in the following graphic. The table shows the number of entries on which the scores are based.



Metric	Whole archive (#Entries)	Similar resolution (#Entries, resolution range(Å))
Clashscore	141614	1585 (2.16-2.16)
Ramachandran outliers	138981	1560 (2.16-2.16)
Sidechain outliers	138945	1559 (2.16-2.16)

The table below summarises the geometric issues observed across the polymeric chains and their fit to the electron density. The red, orange, yellow and green segments on the lower bar indicate the fraction of residues that contain outliers for  $\geq 3$ , 2, 1 and 0 types of geometric quality criteria respectively. A grey segment represents the fraction of residues that are not modelled. The numeric value for each fraction is indicated below the corresponding segment, with a dot representing fractions  $\leq 5\%$

Note EDS was not executed.

Mol	Chain	Length	Quality of chain
1	A	311	
1	B	311	
1	C	311	
1	D	311	

## 2 Entry composition [i](#)

There are 4 unique types of molecules in this entry. The entry contains 8882 atoms, of which 0 are hydrogens and 0 are deuteriums.

In the tables below, the ZeroOcc column contains the number of atoms modelled with zero occupancy, the AltConf column contains the number of residues with at least one atom in alternate conformation and the Trace column contains the number of residues modelled with at most 2 atoms.

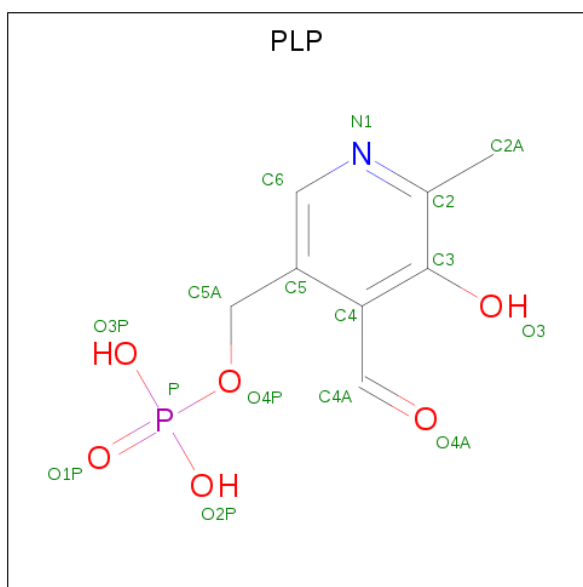
- Molecule 1 is a protein called Threonine deaminase.

Mol	Chain	Residues	Atoms					ZeroOcc	AltConf	Trace
			Total	C	N	O	S			
1	A	308	2279	1444	413	419	3	0	0	0
1	B	297	2190	1389	398	400	3	0	0	0
1	C	274	2024	1286	366	371	1	0	0	0
1	D	280	2069	1315	375	377	2	0	0	0

- Molecule 2 is CALCIUM ION (three-letter code: CA) (formula: Ca).

Mol	Chain	Residues	Atoms		ZeroOcc	AltConf
2	B	1	Total	Ca	0	0
			1	1		
2	A	1	Total	Ca	0	0
			1	1		
2	D	1	Total	Ca	0	0
			1	1		
2	C	1	Total	Ca	0	0
			1	1		

- Molecule 3 is PYRIDOXAL-5'-PHOSPHATE (three-letter code: PLP) (formula: C<sub>8</sub>H<sub>10</sub>NO<sub>6</sub>P).



Mol	Chain	Residues	Atoms					ZeroOcc	AltConf
			Total	C	N	O	P		
3	A	1	Total	C	N	O	P	0	0
			15	8	1	5	1		
3	B	1	Total	C	N	O	P	0	0
			15	8	1	5	1		
3	C	1	Total	C	N	O	P	0	0
			15	8	1	5	1		
3	D	1	Total	C	N	O	P	0	0
			15	8	1	5	1		

- Molecule 4 is water.

Mol	Chain	Residues	Atoms		ZeroOcc	AltConf
4	A	59	Total	O	0	0
			59	59		
4	B	87	Total	O	0	0
			87	87		
4	C	60	Total	O	0	0
			60	60		
4	D	50	Total	O	0	0
			50	50		

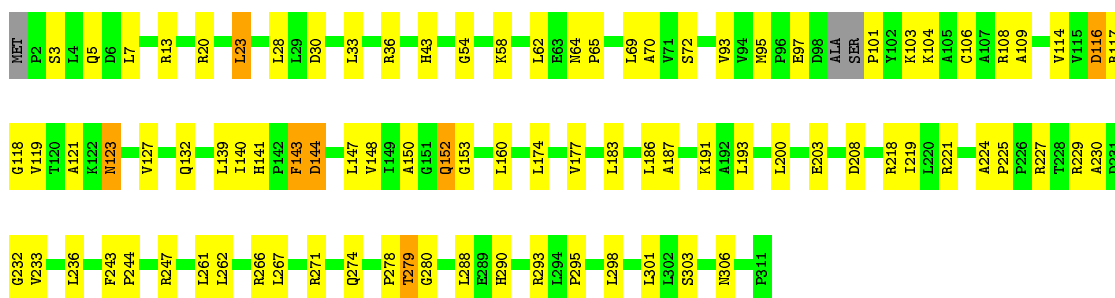
### 3 Residue-property plots [i](#)

These plots are drawn for all protein, RNA and DNA chains in the entry. The first graphic for a chain summarises the proportions of the various outlier classes displayed in the second graphic. The second graphic shows the sequence view annotated by issues in geometry. Residues are color-coded according to the number of geometric quality criteria for which they contain at least one outlier: green = 0, yellow = 1, orange = 2 and red = 3 or more. Stretches of 2 or more consecutive residues without any outlier are shown as a green connector. Residues present in the sample, but not in the model, are shown in grey.

Note EDS was not executed.

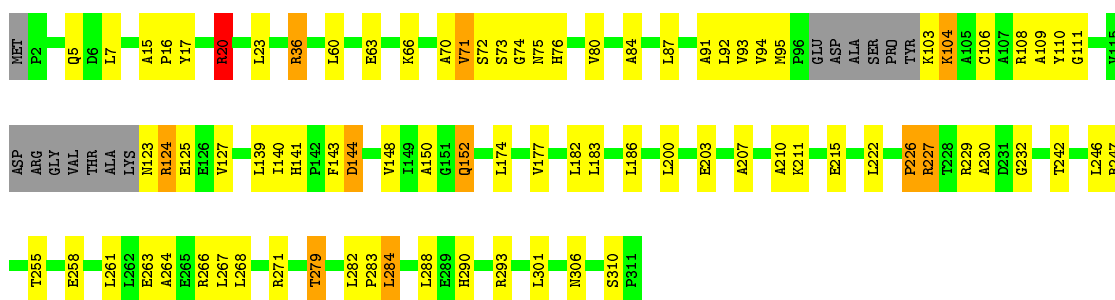
- Molecule 1: Threonine deaminase

Chain A: 



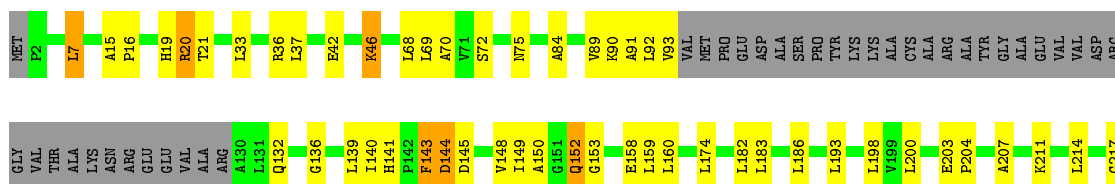
- Molecule 1: Threonine deaminase

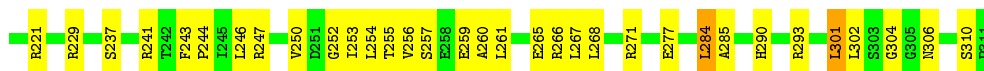
Chain B: 



- Molecule 1: Threonine deaminase

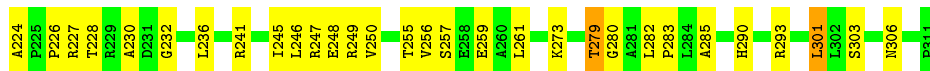
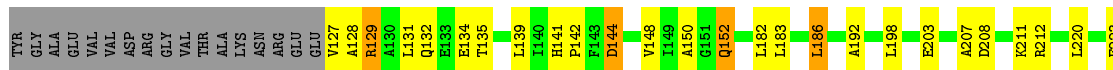
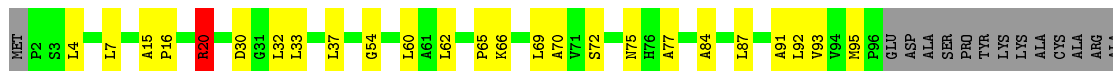
Chain C: 





- Molecule 1: Threonine deaminase

Chain D: 64% 24% 10%



## 4 Data and refinement statistics

Xtrriage (Phenix) and EDS were not executed - this section is therefore incomplete.

Property	Value	Source
Space group	P 1 21 1	Depositor
Cell constants a, b, c, $\alpha$ , $\beta$ , $\gamma$	53.59Å 158.19Å 80.30Å 90.00° 108.52° 90.00°	Depositor
Resolution (Å)	10.00 – 2.15	Depositor
% Data completeness (in resolution range)	95.5 (10.00-2.15)	Depositor
$R_{merge}$	(Not available)	Depositor
$R_{sym}$	(Not available)	Depositor
Refinement program	CNS 1.1	Depositor
R, $R_{free}$	0.202 , 0.245	Depositor
Estimated twinning fraction	No twinning to report.	Xtrriage
Total number of atoms	8882	wwPDB-VP
Average B, all atoms (Å <sup>2</sup> )	37.0	wwPDB-VP

## 5 Model quality [i](#)

### 5.1 Standard geometry [i](#)

Bond lengths and bond angles in the following residue types are not validated in this section: CA, PLP

The Z score for a bond length (or angle) is the number of standard deviations the observed value is removed from the expected value. A bond length (or angle) with  $|Z| > 5$  is considered an outlier worth inspection. RMSZ is the root-mean-square of all Z scores of the bond lengths (or angles).

Mol	Chain	Bond lengths		Bond angles	
		RMSZ	# Z  >5	RMSZ	# Z  >5
1	A	0.33	0/2314	0.63	1/3138 (0.0%)
1	B	0.35	0/2222	0.65	1/3012 (0.0%)
1	C	0.31	0/2055	0.61	0/2788
1	D	0.31	0/2101	0.63	1/2851 (0.0%)
All	All	0.33	0/8692	0.63	3/11789 (0.0%)

There are no bond length outliers.

All (3) bond angle outliers are listed below:

Mol	Chain	Res	Type	Atoms	Z	Observed(°)	Ideal(°)
1	A	20	ARG	N-CA-C	-5.22	96.92	111.00
1	D	20	ARG	N-CA-C	-5.10	97.22	111.00
1	B	20	ARG	N-CA-C	-5.05	97.35	111.00

There are no chirality outliers.

There are no planarity outliers.

### 5.2 Too-close contacts [i](#)

In the following table, the Non-H and H(model) columns list the number of non-hydrogen atoms and hydrogen atoms in the chain respectively. The H(added) column lists the number of hydrogen atoms added and optimized by MolProbity. The Clashes column lists the number of clashes within the asymmetric unit, whereas Symm-Clashes lists symmetry related clashes.

Mol	Chain	Non-H	H(model)	H(added)	Clashes	Symm-Clashes
1	A	2279	0	2375	75	0
1	B	2190	0	2287	80	0
1	C	2024	0	2120	85	0
1	D	2069	0	2172	72	0

*Continued on next page...*



Continued from previous page...

Mol	Chain	Non-H	H(model)	H(added)	Clashes	Symm-Clashes
2	A	1	0	0	0	0
2	B	1	0	0	0	0
2	C	1	0	0	0	0
2	D	1	0	0	0	0
3	A	15	0	7	0	0
3	B	15	0	7	0	0
3	C	15	0	7	0	0
3	D	15	0	7	0	0
4	A	59	0	0	3	0
4	B	87	0	0	5	0
4	C	60	0	0	2	0
4	D	50	0	0	1	0
All	All	8882	0	8982	310	0

The all-atom clashscore is defined as the number of clashes found per 1000 atoms (including hydrogen atoms). The all-atom clashscore for this structure is 18.

All (310) close contacts within the same asymmetric unit are listed below, sorted by their clash magnitude.

Atom-1	Atom-2	Interatomic distance (Å)	Clash overlap (Å)
1:C:20:ARG:HH11	1:C:20:ARG:HA	1.07	1.11
1:B:182:LEU:HD11	1:B:301:LEU:HD21	1.48	0.94
1:A:141:HIS:HD2	1:A:144:ASP:H	1.16	0.92
1:C:20:ARG:HA	1:C:20:ARG:NH1	1.87	0.88
1:D:232:GLY:H	1:D:279:THR:HG21	1.40	0.84
1:C:141:HIS:HD2	1:C:144:ASP:H	1.25	0.84
1:B:182:LEU:HD21	1:B:301:LEU:HD23	1.61	0.82
1:D:129:ARG:H	1:D:129:ARG:HE	1.25	0.82
1:B:232:GLY:H	1:B:279:THR:HG21	1.43	0.82
1:A:141:HIS:CD2	1:A:144:ASP:H	1.98	0.82
1:C:20:ARG:HH11	1:C:20:ARG:CA	1.92	0.82
1:C:89:VAL:HG12	1:C:90:LYS:H	1.44	0.81
1:C:33:LEU:HD12	1:C:37:LEU:HD11	1.63	0.80
1:C:141:HIS:CD2	1:C:144:ASP:H	2.02	0.77
1:D:141:HIS:HD2	1:D:144:ASP:H	1.32	0.77
1:D:223:GLU:H	1:D:223:GLU:CD	1.85	0.77
1:B:152:GLN:HE21	1:B:152:GLN:HA	1.48	0.77
1:C:200:LEU:HD23	1:C:254:LEU:HD11	1.66	0.76
1:B:141:HIS:CD2	1:B:144:ASP:H	2.04	0.76
1:A:221:ARG:HH21	1:A:236:LEU:HD12	1.52	0.74
1:C:182:LEU:HD21	1:C:301:LEU:HD22	1.68	0.73

Continued on next page...

*Continued from previous page...*

Atom-1	Atom-2	Interatomic distance (Å)	Clash overlap (Å)
1:B:141:HIS:HD2	1:B:144:ASP:H	1.36	0.73
1:B:174:LEU:HD13	1:B:200:LEU:HB2	1.70	0.73
1:A:101:PRO:HB2	1:A:103:LYS:HG2	1.71	0.73
1:A:152:GLN:HE21	1:A:152:GLN:HA	1.55	0.72
1:C:290:HIS:CD2	1:C:293:ARG:HH22	2.08	0.70
1:D:69:LEU:HD21	1:D:128:ALA:HB1	1.73	0.70
1:C:290:HIS:HD2	1:C:293:ARG:HH22	1.40	0.70
1:D:141:HIS:CD2	1:D:144:ASP:H	2.11	0.69
1:C:266:ARG:HH11	1:C:266:ARG:HG2	1.57	0.69
1:C:139:LEU:HD23	1:C:140:ILE:N	2.07	0.69
1:D:33:LEU:HD12	1:D:37:LEU:HD11	1.74	0.69
1:C:186:LEU:HD21	1:C:301:LEU:HD13	1.75	0.68
1:A:97:GLU:HA	1:A:116:ASP:OD1	1.93	0.68
1:C:229:ARG:HH11	1:C:229:ARG:HB3	1.58	0.68
1:A:290:HIS:HD2	1:A:293:ARG:HH21	1.39	0.68
1:A:7:LEU:HD11	1:A:153:GLY:HA3	1.75	0.68
1:C:89:VAL:HG12	1:C:90:LYS:N	2.09	0.68
1:A:33:LEU:H	1:A:33:LEU:HD22	1.58	0.67
1:C:198:LEU:HB3	1:C:200:LEU:HD11	1.77	0.67
1:B:15:ALA:HA	1:B:20:ARG:NH2	2.10	0.67
1:B:152:GLN:HE21	1:B:152:GLN:CA	2.08	0.67
1:C:152:GLN:HE21	1:C:152:GLN:HA	1.60	0.67
1:D:152:GLN:HA	1:D:152:GLN:HE21	1.58	0.67
1:B:230:ALA:HB1	1:B:279:THR:HB	1.76	0.66
1:D:152:GLN:CA	1:D:152:GLN:HE21	2.09	0.66
1:B:72:SER:O	1:B:73:SER:HB3	1.95	0.66
1:A:72:SER:O	1:A:95:MET:HG2	1.97	0.65
1:A:108:ARG:HH11	1:A:114:VAL:HB	1.61	0.65
1:A:104:LYS:O	1:A:108:ARG:HG3	1.97	0.65
1:B:226:PRO:O	1:B:227:ARG:HB2	1.97	0.65
1:C:229:ARG:NH1	1:C:229:ARG:HB3	2.12	0.65
1:A:290:HIS:CD2	1:A:293:ARG:HH21	2.14	0.64
1:B:186:LEU:CD2	1:B:301:LEU:HD22	2.26	0.64
1:B:232:GLY:N	1:B:279:THR:HG21	2.12	0.64
1:B:72:SER:HB2	1:B:95:MET:HA	1.80	0.64
1:A:108:ARG:HH12	1:A:114:VAL:H	1.43	0.63
1:D:54:GLY:H	1:D:152:GLN:HE22	1.47	0.63
1:D:256:VAL:HG11	1:D:285:ALA:HB1	1.81	0.63
1:B:93:VAL:HG12	1:B:95:MET:HG3	1.81	0.62
1:C:152:GLN:HE21	1:C:152:GLN:CA	2.12	0.62
1:C:72:SER:HB2	1:C:93:VAL:HG12	1.81	0.62

*Continued on next page...*

*Continued from previous page...*

Atom-1	Atom-2	Interatomic distance (Å)	Clash overlap (Å)
1:D:62:LEU:CB	1:D:65:PRO:HG3	2.29	0.62
1:D:127:VAL:HB	1:D:129:ARG:NH2	2.15	0.62
1:D:232:GLY:N	1:D:279:THR:HG21	2.15	0.61
1:A:227:ARG:HG3	1:A:227:ARG:O	2.00	0.61
1:B:84:ALA:HB2	1:B:91:ALA:HB2	1.80	0.61
1:B:75:ASN:ND2	1:B:103:LYS:HE3	2.15	0.61
1:D:30:ASP:O	1:D:33:LEU:O	2.19	0.61
1:A:108:ARG:NH1	1:A:114:VAL:HB	2.15	0.61
1:D:69:LEU:O	1:D:139:LEU:HA	2.00	0.61
1:B:104:LYS:C	1:B:104:LYS:HD3	2.21	0.61
1:B:177:VAL:HG21	1:B:183:LEU:HD22	1.83	0.60
1:D:186:LEU:HD21	1:D:301:LEU:HD13	1.83	0.60
1:D:128:ALA:H	1:D:129:ARG:HH21	1.49	0.60
1:A:152:GLN:HE21	1:A:152:GLN:CA	2.13	0.60
1:A:230:ALA:HB1	1:A:279:THR:HB	1.84	0.60
1:A:229:ARG:HG2	1:A:229:ARG:HH11	1.66	0.60
1:B:141:HIS:HD2	1:B:143:PHE:H	1.49	0.60
1:B:182:LEU:HD11	1:B:301:LEU:CD2	2.27	0.60
1:B:84:ALA:CB	1:B:91:ALA:HB2	2.32	0.59
1:C:266:ARG:NH1	1:C:266:ARG:HG2	2.16	0.59
1:B:15:ALA:HA	1:B:20:ARG:HH22	1.68	0.59
1:B:242:THR:O	1:B:246:LEU:HG	2.03	0.59
1:D:212:ARG:HB3	1:D:220:LEU:HD12	1.84	0.59
1:C:7:LEU:HD22	1:C:150:ALA:HA	1.84	0.59
1:D:261:LEU:HD23	1:D:261:LEU:C	2.23	0.59
1:D:290:HIS:HA	1:D:293:ARG:HH21	1.67	0.58
1:C:256:VAL:HG11	1:C:285:ALA:HB1	1.84	0.58
1:C:256:VAL:HG13	1:C:260:ALA:HB3	1.84	0.58
1:C:267:LEU:O	1:C:271:ARG:HB2	2.03	0.58
1:B:15:ALA:O	1:B:20:ARG:NH2	2.37	0.58
1:D:32:LEU:HD23	1:D:32:LEU:O	2.04	0.58
1:D:69:LEU:HD23	1:D:70:ALA:N	2.19	0.58
1:D:72:SER:OG	1:D:95:MET:HG2	2.04	0.57
1:A:7:LEU:HD13	1:A:150:ALA:O	2.04	0.57
1:A:233:VAL:HB	4:A:1231:HOH:O	2.05	0.57
1:B:229:ARG:HG2	1:B:258:GLU:OE1	2.05	0.57
1:C:247:ARG:HB3	1:C:247:ARG:HH11	1.70	0.57
1:D:259:GLU:HG3	4:D:1058:HOH:O	2.05	0.57
1:D:232:GLY:H	1:D:279:THR:CG2	2.15	0.56
1:B:263:GLU:HG2	4:B:1112:HOH:O	2.05	0.56
1:A:54:GLY:H	1:A:152:GLN:HE22	1.53	0.56

*Continued on next page...*

*Continued from previous page...*

Atom-1	Atom-2	Interatomic distance (Å)	Clash overlap (Å)
1:A:148:VAL:O	1:A:152:GLN:HG2	2.06	0.56
1:A:5:GLN:HG3	4:A:1191:HOH:O	2.05	0.56
1:C:221:ARG:NH1	1:C:237:SER:OG	2.39	0.56
1:D:129:ARG:H	1:D:129:ARG:NE	2.02	0.56
1:D:62:LEU:HB3	1:D:65:PRO:HG3	1.87	0.56
1:A:266:ARG:HH12	1:A:271:ARG:HH12	1.54	0.55
1:A:36:ARG:HH11	1:A:36:ARG:HG2	1.70	0.55
1:C:214:LEU:HD12	1:C:253:ILE:HG12	1.89	0.55
1:A:33:LEU:N	1:A:33:LEU:HD22	2.22	0.55
1:B:177:VAL:CG2	1:B:183:LEU:HD22	2.36	0.55
1:D:208:ASP:O	1:D:212:ARG:HD3	2.07	0.55
1:B:186:LEU:HD21	1:B:301:LEU:HD22	1.86	0.55
1:D:66:LYS:HD2	1:D:135:THR:O	2.06	0.55
1:D:248:GLU:HG2	1:D:249:ARG:HG3	1.89	0.54
1:A:54:GLY:H	1:A:152:GLN:NE2	2.06	0.54
1:C:19:HIS:O	1:C:20:ARG:NH1	2.41	0.54
1:A:177:VAL:HG22	1:A:183:LEU:HD22	1.90	0.54
1:A:33:LEU:HD11	1:A:288:LEU:HD12	1.89	0.54
1:B:186:LEU:HD22	1:B:301:LEU:HD22	1.90	0.54
1:B:63:GLU:O	1:B:63:GLU:HG3	2.07	0.54
1:A:224:ALA:HB1	1:A:225:PRO:HD2	1.89	0.54
1:D:148:VAL:O	1:D:152:GLN:HG2	2.08	0.54
1:C:250:VAL:HG12	1:C:252:GLY:H	1.72	0.53
1:D:62:LEU:HB2	1:D:65:PRO:HG3	1.90	0.53
1:A:160:LEU:HD12	1:A:193:LEU:HD12	1.89	0.53
1:B:290:HIS:CD2	1:B:293:ARG:HH21	2.26	0.53
1:D:211:LYS:HD2	1:D:255:THR:HG23	1.91	0.53
1:B:60:LEU:HD23	1:B:87:LEU:HD21	1.91	0.53
1:C:254:LEU:N	1:C:254:LEU:HD12	2.22	0.53
1:D:230:ALA:CA	1:D:279:THR:HG22	2.38	0.52
1:C:84:ALA:CB	1:C:91:ALA:HB2	2.39	0.52
1:B:109:ALA:C	1:B:111:GLY:H	2.13	0.52
1:D:7:LEU:HD22	1:D:150:ALA:HA	1.90	0.52
1:D:230:ALA:HA	1:D:279:THR:HG22	1.92	0.52
1:B:109:ALA:O	1:B:111:GLY:N	2.43	0.52
1:B:71:VAL:O	1:B:94:VAL:O	2.27	0.52
1:D:54:GLY:H	1:D:152:GLN:NE2	2.06	0.52
1:A:108:ARG:NH1	1:A:114:VAL:H	2.07	0.52
1:A:93:VAL:HG12	1:A:95:MET:HG3	1.92	0.52
1:C:247:ARG:NH1	1:C:247:ARG:CB	2.72	0.52
1:C:20:ARG:CZ	4:C:1104:HOH:O	2.58	0.51

*Continued on next page...*

*Continued from previous page...*

Atom-1	Atom-2	Interatomic distance (Å)	Clash overlap (Å)
1:C:20:ARG:NH1	1:C:158:GLU:OE2	2.44	0.51
1:A:117:ARG:O	1:A:119:VAL:HG23	2.11	0.51
1:A:58:LYS:HD2	1:A:147:LEU:HD12	1.93	0.51
1:A:224:ALA:HB1	1:A:225:PRO:CD	2.40	0.51
1:C:200:LEU:N	1:C:200:LEU:HD12	2.26	0.51
1:C:7:LEU:HD13	1:C:153:GLY:HA3	1.93	0.51
1:A:121:ALA:C	1:A:123:ASN:H	2.14	0.51
1:B:5:GLN:HG3	4:B:1066:HOH:O	2.11	0.51
1:A:219:ILE:HG22	4:A:1145:HOH:O	2.10	0.51
1:B:266:ARG:HH12	1:B:271:ARG:HH12	1.59	0.51
1:B:124:ARG:O	1:B:127:VAL:N	2.42	0.51
1:B:72:SER:OG	1:B:95:MET:HG2	2.10	0.51
1:D:92:LEU:HD21	1:D:131:LEU:HD13	1.93	0.51
1:C:20:ARG:NE	4:C:1104:HOH:O	2.43	0.51
1:D:15:ALA:HB3	1:D:16:PRO:HD3	1.94	0.50
1:D:75:ASN:ND2	1:D:306:ASN:HD22	2.09	0.50
1:A:290:HIS:HD2	1:A:293:ARG:NH2	2.08	0.50
1:C:20:ARG:NH1	1:C:20:ARG:CA	2.61	0.50
1:D:207:ALA:HB2	1:D:226:PRO:CB	2.42	0.50
1:A:295:PRO:HG2	1:A:298:LEU:CD2	2.42	0.50
1:C:203:GLU:OE2	1:C:253:ILE:HG21	2.11	0.50
1:D:84:ALA:CB	1:D:91:ALA:HB2	2.41	0.50
1:B:232:GLY:H	1:B:279:THR:CG2	2.18	0.50
1:B:290:HIS:HD2	1:B:293:ARG:HH21	1.59	0.50
1:B:264:ALA:HB1	1:B:284:LEU:HB3	1.94	0.49
1:B:7:LEU:HD22	1:B:150:ALA:HA	1.94	0.49
1:D:129:ARG:O	1:D:132:GLN:HB3	2.11	0.49
1:D:4:LEU:HD22	1:D:192:ALA:HB1	1.93	0.49
1:D:256:VAL:HG12	1:D:257:SER:O	2.11	0.49
1:D:261:LEU:O	1:D:261:LEU:HD23	2.12	0.49
1:D:236:LEU:N	1:D:236:LEU:HD22	2.26	0.49
1:C:221:ARG:HG2	1:C:237:SER:HB3	1.93	0.49
1:A:174:LEU:HD13	1:A:200:LEU:HB2	1.93	0.49
1:A:64:ASN:N	1:A:65:PRO:HD3	2.27	0.49
1:D:72:SER:CB	1:D:95:MET:HG2	2.42	0.49
1:B:226:PRO:O	1:B:227:ARG:CB	2.60	0.49
1:C:148:VAL:O	1:C:152:GLN:HG2	2.12	0.49
1:A:69:LEU:HD23	1:A:70:ALA:N	2.26	0.49
1:C:246:LEU:HD22	1:C:250:VAL:HG21	1.94	0.49
1:A:160:LEU:CD1	1:A:193:LEU:HD12	2.43	0.49
1:C:159:LEU:C	1:C:159:LEU:HD23	2.33	0.49

*Continued on next page...*

*Continued from previous page...*

Atom-1	Atom-2	Interatomic distance (Å)	Clash overlap (Å)
1:B:267:LEU:O	1:B:271:ARG:HB2	2.13	0.49
1:C:132:GLN:O	1:C:136:GLY:N	2.42	0.49
1:D:182:LEU:HD21	1:D:301:LEU:HD22	1.95	0.48
1:B:70:ALA:HB2	1:B:80:VAL:HG21	1.93	0.48
1:B:203:GLU:O	1:B:255:THR:HA	2.14	0.48
1:C:33:LEU:HD11	1:C:284:LEU:HD21	1.95	0.48
1:C:89:VAL:CG1	1:C:90:LYS:H	2.21	0.48
1:C:221:ARG:HG2	1:C:237:SER:CB	2.44	0.48
1:A:62:LEU:CB	1:A:65:PRO:HG3	2.44	0.48
1:B:108:ARG:HG3	1:B:108:ARG:HH11	1.79	0.48
1:B:73:SER:HB3	1:B:76:HIS:HB3	1.96	0.48
1:C:15:ALA:N	1:C:16:PRO:HD2	2.29	0.47
1:D:223:GLU:N	1:D:223:GLU:CD	2.61	0.47
1:A:132:GLN:NE2	1:A:139:LEU:HB2	2.30	0.47
1:A:139:LEU:HD23	1:A:140:ILE:N	2.29	0.47
1:C:229:ARG:HD2	1:C:265:GLU:OE2	2.13	0.47
1:C:19:HIS:NE2	1:C:46:LYS:HE2	2.29	0.47
1:A:13:ARG:NH2	1:A:147:LEU:HD22	2.29	0.47
1:B:222:LEU:HD13	1:B:226:PRO:HG3	1.97	0.47
1:C:257:SER:OG	1:C:259:GLU:HG2	2.15	0.47
1:C:72:SER:HB2	1:C:93:VAL:CG1	2.44	0.47
1:A:3:SER:O	1:A:7:LEU:HD23	2.15	0.47
1:B:74:GLY:HA2	1:B:95:MET:CE	2.45	0.47
1:B:268:LEU:HG	1:B:284:LEU:HD12	1.97	0.46
1:A:62:LEU:HB3	1:A:65:PRO:HG3	1.97	0.46
1:B:211:LYS:O	1:B:215:GLU:HG3	2.14	0.46
1:A:139:LEU:C	1:A:139:LEU:HD23	2.36	0.46
1:B:148:VAL:O	1:B:152:GLN:HG2	2.15	0.46
1:B:279:THR:CG2	4:B:1221:HOH:O	2.63	0.46
1:C:204:PRO:HG2	1:C:207:ALA:HB3	1.96	0.46
1:A:295:PRO:HG2	1:A:298:LEU:HD23	1.97	0.46
1:A:106:CYS:O	1:A:109:ALA:HB3	2.16	0.46
1:C:75:ASN:ND2	1:C:306:ASN:HD22	2.13	0.46
1:A:132:GLN:HE22	1:A:139:LEU:HB2	1.80	0.45
1:C:293:ARG:HB2	1:C:293:ARG:NH1	2.31	0.45
1:B:207:ALA:HB2	1:B:226:PRO:HB3	1.99	0.45
1:D:282:LEU:N	1:D:283:PRO:HD2	2.32	0.45
1:D:92:LEU:CD2	1:D:131:LEU:HD13	2.47	0.45
1:A:203:GLU:CD	1:A:208:ASP:HA	2.37	0.45
1:A:33:LEU:H	1:A:33:LEU:CD2	2.29	0.45
1:B:36:ARG:HD3	1:B:36:ARG:C	2.36	0.45

*Continued on next page...*

*Continued from previous page...*

Atom-1	Atom-2	Interatomic distance (Å)	Clash overlap (Å)
1:C:229:ARG:NH1	1:C:229:ARG:CB	2.78	0.45
1:C:141:HIS:HD2	1:C:143:PHE:H	1.64	0.45
1:A:187:ALA:O	1:A:191:LYS:HB2	2.17	0.45
1:C:198:LEU:HB3	1:C:200:LEU:CD1	2.44	0.45
1:B:139:LEU:HD23	1:B:140:ILE:N	2.32	0.44
1:C:92:LEU:HD23	1:C:92:LEU:C	2.37	0.44
1:D:139:LEU:HD23	1:D:139:LEU:C	2.37	0.44
1:A:267:LEU:O	1:A:271:ARG:HB2	2.17	0.44
1:B:106:CYS:O	1:B:109:ALA:HB3	2.18	0.44
1:B:15:ALA:CA	1:B:20:ARG:NH2	2.79	0.44
1:B:255:THR:O	1:B:290:HIS:HE1	2.01	0.44
1:A:232:GLY:H	1:A:279:THR:HG21	1.83	0.44
1:C:15:ALA:HA	1:C:20:ARG:HH21	1.82	0.43
1:C:256:VAL:HG12	1:C:257:SER:O	2.18	0.43
1:A:30:ASP:O	1:A:33:LEU:O	2.35	0.43
1:D:245:ILE:HG23	1:D:249:ARG:HD2	1.99	0.43
1:D:54:GLY:N	1:D:152:GLN:NE2	2.66	0.43
1:D:15:ALA:O	1:D:20:ARG:NH2	2.51	0.43
1:A:23:LEU:HA	1:A:23:LEU:HD23	1.90	0.43
1:B:282:LEU:HB2	1:B:283:PRO:HD3	2.01	0.43
1:C:139:LEU:C	1:C:139:LEU:HD23	2.39	0.43
1:B:182:LEU:HD21	1:B:301:LEU:CD2	2.42	0.43
1:C:247:ARG:HB2	1:C:247:ARG:CZ	2.48	0.43
1:C:247:ARG:NH1	1:C:247:ARG:HB3	2.31	0.43
1:B:75:ASN:HD21	1:B:103:LYS:HE3	1.80	0.43
1:D:127:VAL:N	1:D:129:ARG:NE	2.66	0.43
1:C:243:PHE:N	1:C:244:PRO:HD2	2.33	0.42
1:C:69:LEU:HD12	1:C:92:LEU:O	2.19	0.42
1:A:280:GLY:HA2	1:A:303:SER:OG	2.19	0.42
1:B:279:THR:HG23	4:B:1221:HOH:O	2.19	0.42
1:C:68:LEU:HD22	1:C:140:ILE:HD11	2.00	0.42
1:C:70:ALA:HB3	1:C:93:VAL:HG22	2.01	0.42
1:A:218:ARG:HH11	1:A:218:ARG:HG2	1.83	0.42
1:A:218:ARG:NH1	1:A:218:ARG:HG2	2.34	0.42
1:B:16:PRO:HG2	1:B:17:TYR:CE1	2.54	0.42
1:B:152:GLN:NE2	1:B:152:GLN:CA	2.81	0.42
1:B:284:LEU:O	1:B:284:LEU:HD23	2.20	0.42
1:C:42:GLU:HB2	1:C:302:LEU:O	2.19	0.42
1:D:246:LEU:HD22	1:D:250:VAL:HG21	2.00	0.42
1:B:232:GLY:CA	1:B:279:THR:HG21	2.50	0.42
1:C:19:HIS:C	1:C:20:ARG:NH1	2.73	0.42

*Continued on next page...*

*Continued from previous page...*

Atom-1	Atom-2	Interatomic distance (Å)	Clash overlap (Å)
1:C:145:ASP:O	1:C:149:ILE:HG13	2.20	0.42
1:D:7:LEU:CD2	1:D:150:ALA:HA	2.50	0.42
1:B:7:LEU:CD2	1:B:150:ALA:HA	2.50	0.41
1:B:66:LYS:HD2	4:B:1204:HOH:O	2.19	0.41
1:A:123:ASN:C	1:A:123:ASN:OD1	2.58	0.41
1:C:211:LYS:HD2	1:C:255:THR:HG23	2.02	0.41
1:D:141:HIS:CG	1:D:142:PRO:HD2	2.55	0.41
1:A:43:HIS:HE1	1:A:274:GLN:OE1	2.02	0.41
1:C:247:ARG:CB	1:C:247:ARG:HH11	2.31	0.41
1:C:266:ARG:HH12	1:C:271:ARG:HH12	1.68	0.41
1:C:36:ARG:NH1	1:C:36:ARG:HG3	2.35	0.41
1:A:243:PHE:N	1:A:244:PRO:HD2	2.35	0.41
1:D:223:GLU:O	1:D:224:ALA:HB2	2.20	0.41
1:B:203:GLU:OE1	1:B:210:ALA:HB3	2.21	0.41
1:D:152:GLN:CA	1:D:152:GLN:NE2	2.80	0.41
1:B:75:ASN:ND2	1:B:306:ASN:HD22	2.18	0.41
1:C:174:LEU:HD12	1:C:174:LEU:N	2.36	0.41
1:C:266:ARG:HH12	1:C:271:ARG:NH1	2.18	0.41
1:C:268:LEU:HG	1:C:284:LEU:HD12	2.02	0.41
1:D:77:ALA:HB1	1:D:93:VAL:HG11	2.02	0.41
1:C:217:GLY:HA2	1:C:247:ARG:HD3	2.01	0.41
1:D:207:ALA:HB2	1:D:226:PRO:HB2	2.03	0.41
1:A:28:LEU:HD13	1:A:271:ARG:HG3	2.03	0.41
1:A:306:ASN:HD22	1:D:273:LYS:NZ	2.18	0.41
1:C:277:GLU:HG2	1:C:304:GLY:O	2.21	0.41
1:D:280:GLY:HA2	1:D:303:SER:OG	2.21	0.41
1:A:123:ASN:O	1:A:127:VAL:HG23	2.21	0.41
1:A:261:LEU:HD11	1:A:278:PRO:O	2.21	0.41
1:B:123:ASN:O	1:B:124:ARG:C	2.58	0.41
1:C:160:LEU:CD1	1:C:193:LEU:HD12	2.51	0.41
1:A:229:ARG:HG2	1:A:229:ARG:NH1	2.36	0.40
1:A:36:ARG:HH11	1:A:36:ARG:CG	2.34	0.40
1:B:20:ARG:HA	1:B:20:ARG:HD3	1.84	0.40
1:D:203:GLU:CD	1:D:208:ASP:HA	2.41	0.40
1:B:141:HIS:CD2	1:B:143:PHE:H	2.33	0.40
1:B:310:SER:OG	1:C:310:SER:OG	2.37	0.40
1:B:74:GLY:HA2	1:B:95:MET:HE1	2.02	0.40
1:D:20:ARG:HA	1:D:20:ARG:HD3	1.82	0.40
1:D:261:LEU:CD2	1:D:261:LEU:C	2.89	0.40
1:A:141:HIS:HD2	1:A:143:PHE:H	1.70	0.40
1:D:128:ALA:H	1:D:129:ARG:NH2	2.16	0.40

*Continued on next page...*



Continued from previous page...

Atom-1	Atom-2	Interatomic distance (Å)	Clash overlap (Å)
1:D:60:LEU:HD23	1:D:87:LEU:HD21	2.03	0.40
1:C:247:ARG:HB2	1:C:247:ARG:NH1	2.36	0.40

There are no symmetry-related clashes.

## 5.3 Torsion angles [i](#)

### 5.3.1 Protein backbone [i](#)

In the following table, the Percentiles column shows the percent Ramachandran outliers of the chain as a percentile score with respect to all X-ray entries followed by that with respect to entries of similar resolution.

The Analysed column shows the number of residues for which the backbone conformation was analysed, and the total number of residues.

Mol	Chain	Analysed	Favoured	Allowed	Outliers	Percentiles
1	A	304/311 (98%)	287 (94%)	15 (5%)	2 (1%)	22 15
1	B	291/311 (94%)	275 (94%)	10 (3%)	6 (2%)	7 2
1	C	270/311 (87%)	257 (95%)	12 (4%)	1 (0%)	34 29
1	D	276/311 (89%)	260 (94%)	15 (5%)	1 (0%)	34 29
All	All	1141/1244 (92%)	1079 (95%)	52 (5%)	10 (1%)	17 11

All (10) Ramachandran outliers are listed below:

Mol	Chain	Res	Type
1	B	71	VAL
1	B	110	TYR
1	B	124	ARG
1	B	226	PRO
1	B	227	ARG
1	B	125	GLU
1	D	227	ARG
1	A	143	PHE
1	C	143	PHE
1	A	118	GLY

### 5.3.2 Protein sidechains [i](#)

In the following table, the Percentiles column shows the percent sidechain outliers of the chain as a percentile score with respect to all X-ray entries followed by that with respect to entries of similar resolution.

The Analysed column shows the number of residues for which the sidechain conformation was analysed, and the total number of residues.

Mol	Chain	Analysed	Rotameric	Outliers	Percentiles	
1	A	230/234 (98%)	220 (96%)	10 (4%)	29	27
1	B	220/234 (94%)	208 (94%)	12 (6%)	21	17
1	C	205/234 (88%)	194 (95%)	11 (5%)	22	18
1	D	210/234 (90%)	197 (94%)	13 (6%)	18	14
All	All	865/936 (92%)	819 (95%)	46 (5%)	22	19

All (46) residues with a non-rotameric sidechain are listed below:

Mol	Chain	Res	Type
1	A	23	LEU
1	A	116	ASP
1	A	123	ASN
1	A	144	ASP
1	A	152	GLN
1	A	186	LEU
1	A	247	ARG
1	A	262	LEU
1	A	279	THR
1	A	301	LEU
1	B	20	ARG
1	B	23	LEU
1	B	36	ARG
1	B	92	LEU
1	B	104	LYS
1	B	144	ASP
1	B	152	GLN
1	B	247	ARG
1	B	261	LEU
1	B	279	THR
1	B	284	LEU
1	B	288	LEU
1	C	7	LEU
1	C	20	ARG

*Continued on next page...*

*Continued from previous page...*

<b>Mol</b>	<b>Chain</b>	<b>Res</b>	<b>Type</b>
1	C	21	THR
1	C	46	LYS
1	C	144	ASP
1	C	152	GLN
1	C	183	LEU
1	C	241	ARG
1	C	261	LEU
1	C	284	LEU
1	C	301	LEU
1	D	20	ARG
1	D	129	ARG
1	D	134	GLU
1	D	144	ASP
1	D	152	GLN
1	D	183	LEU
1	D	186	LEU
1	D	198	LEU
1	D	228	THR
1	D	241	ARG
1	D	247	ARG
1	D	279	THR
1	D	301	LEU

Some sidechains can be flipped to improve hydrogen bonding and reduce clashes. All (29) such sidechains are listed below:

<b>Mol</b>	<b>Chain</b>	<b>Res</b>	<b>Type</b>
1	A	43	HIS
1	A	75	ASN
1	A	132	GLN
1	A	141	HIS
1	A	152	GLN
1	A	274	GLN
1	A	290	HIS
1	A	306	ASN
1	B	43	HIS
1	B	64	ASN
1	B	75	ASN
1	B	141	HIS
1	B	152	GLN
1	B	274	GLN
1	B	290	HIS
1	B	296	GLN

*Continued on next page...*

*Continued from previous page...*

Mol	Chain	Res	Type
1	C	43	HIS
1	C	75	ASN
1	C	132	GLN
1	C	141	HIS
1	C	152	GLN
1	C	274	GLN
1	C	290	HIS
1	D	43	HIS
1	D	75	ASN
1	D	141	HIS
1	D	152	GLN
1	D	274	GLN
1	D	290	HIS

### 5.3.3 RNA [i](#)

There are no RNA molecules in this entry.

### 5.4 Non-standard residues in protein, DNA, RNA chains [i](#)

There are no non-standard protein/DNA/RNA residues in this entry.

### 5.5 Carbohydrates [i](#)

There are no carbohydrates in this entry.

### 5.6 Ligand geometry [i](#)

Of 8 ligands modelled in this entry, 4 are monoatomic - leaving 4 for Mogul analysis.

In the following table, the Counts columns list the number of bonds (or angles) for which Mogul statistics could be retrieved, the number of bonds (or angles) that are observed in the model and the number of bonds (or angles) that are defined in the Chemical Component Dictionary. The Link column lists molecule types, if any, to which the group is linked. The Z score for a bond length (or angle) is the number of standard deviations the observed value is removed from the expected value. A bond length (or angle) with  $|Z| > 2$  is considered an outlier worth inspection. RMSZ is the root-mean-square of all Z scores of the bond lengths (or angles).

Mol	Type	Chain	Res	Link	Bond lengths			Bond angles		
					Counts	RMSZ	$\# Z  > 2$	Counts	RMSZ	$\# Z  > 2$
3	PLP	C	1413	1	15,15,16	1.68	2 (13%)	20,22,23	1.85	6 (30%)

Mol	Type	Chain	Res	Link	Bond lengths			Bond angles		
					Counts	RMSZ	# Z  > 2	Counts	RMSZ	# Z  > 2
3	PLP	D	1913	1	15,15,16	1.41	3 (20%)	20,22,23	1.50	3 (15%)
3	PLP	B	913	1	15,15,16	1.66	4 (26%)	20,22,23	1.92	4 (20%)
3	PLP	A	413	1	15,15,16	1.43	2 (13%)	20,22,23	1.47	5 (25%)

In the following table, the Chirals column lists the number of chiral outliers, the number of chiral centers analysed, the number of these observed in the model and the number defined in the Chemical Component Dictionary. Similar counts are reported in the Torsion and Rings columns. '-' means no outliers of that kind were identified.

Mol	Type	Chain	Res	Link	Chirals	Torsions	Rings
3	PLP	C	1413	1	-	0/6/6/8	0/1/1/1
3	PLP	D	1913	1	-	1/6/6/8	0/1/1/1
3	PLP	B	913	1	-	1/6/6/8	0/1/1/1
3	PLP	A	413	1	-	0/6/6/8	0/1/1/1

All (11) bond length outliers are listed below:

Mol	Chain	Res	Type	Atoms	Z	Observed(Å)	Ideal(Å)
3	B	913	PLP	C3-C2	-4.22	1.36	1.40
3	C	1413	PLP	C3-C2	-3.94	1.37	1.40
3	A	413	PLP	C2A-C2	3.77	1.56	1.50
3	C	1413	PLP	C2A-C2	3.18	1.55	1.50
3	B	913	PLP	C2A-C2	2.81	1.55	1.50
3	D	1913	PLP	C2A-C2	2.79	1.55	1.50
3	A	413	PLP	C4A-C4	2.39	1.56	1.51
3	B	913	PLP	P-O3P	-2.16	1.46	1.54
3	D	1913	PLP	C2-N1	2.15	1.37	1.33
3	D	1913	PLP	C4A-C4	2.10	1.56	1.51
3	B	913	PLP	C2-N1	2.03	1.37	1.33

All (18) bond angle outliers are listed below:

Mol	Chain	Res	Type	Atoms	Z	Observed(°)	Ideal(°)
3	B	913	PLP	O4P-C5A-C5	5.31	119.47	109.35
3	C	1413	PLP	O4P-C5A-C5	4.61	118.14	109.35
3	D	1913	PLP	O4P-C5A-C5	3.79	116.57	109.35
3	C	1413	PLP	O2P-P-O4P	-3.51	97.40	106.73
3	B	913	PLP	O3P-P-O4P	3.47	115.96	106.73
3	B	913	PLP	O2P-P-O4P	-3.45	97.55	106.73
3	D	1913	PLP	O2P-P-O4P	-3.09	98.52	106.73
3	A	413	PLP	O3P-P-O1P	2.77	121.51	110.68

*Continued on next page...*

*Continued from previous page...*

Mol	Chain	Res	Type	Atoms	Z	Observed(°)	Ideal(°)
3	A	413	PLP	O2P-P-O4P	-2.70	99.56	106.73
3	A	413	PLP	O4P-C5A-C5	2.62	114.35	109.35
3	C	1413	PLP	C5A-C5-C6	-2.47	115.32	119.37
3	A	413	PLP	C4A-C4-C5	2.43	123.44	120.94
3	C	1413	PLP	O3P-P-O1P	2.43	120.21	110.68
3	D	1913	PLP	O3P-P-O1P	2.40	120.08	110.68
3	C	1413	PLP	C4A-C4-C5	2.28	123.28	120.94
3	C	1413	PLP	O3P-P-O4P	2.24	112.69	106.73
3	B	913	PLP	O3P-P-O1P	2.22	119.36	110.68
3	A	413	PLP	C5A-C5-C6	-2.14	115.85	119.37

There are no chirality outliers.

All (2) torsion outliers are listed below:

Mol	Chain	Res	Type	Atoms
3	B	913	PLP	C5A-O4P-P-O1P
3	D	1913	PLP	C5A-O4P-P-O1P

There are no ring outliers.

No monomer is involved in short contacts.

## 5.7 Other polymers [i](#)

There are no such residues in this entry.

## 5.8 Polymer linkage issues [i](#)

There are no chain breaks in this entry.

## 6 Fit of model and data

### 6.1 Protein, DNA and RNA chains

EDS was not executed - this section is therefore empty.

### 6.2 Non-standard residues in protein, DNA, RNA chains

EDS was not executed - this section is therefore empty.

### 6.3 Carbohydrates

EDS was not executed - this section is therefore empty.

### 6.4 Ligands

EDS was not executed - this section is therefore empty.

### 6.5 Other polymers

EDS was not executed - this section is therefore empty.