



# Full wwPDB X-ray Structure Validation Report ⓘ

Nov 22, 2023 – 05:11 PM JST

PDB ID : 7VE0  
Title : Crystal Structure of Ritonavir bound Plasmepsin II (PMII) from Plasmodium falciparum  
Authors : Mishra, V.; Rathore, I.; Bhaumik, P.  
Deposited on : 2021-09-07  
Resolution : 1.90 Å(reported)

This is a Full wwPDB X-ray Structure Validation Report for a publicly released PDB entry.

We welcome your comments at [validation@mail.wwpdb.org](mailto:validation@mail.wwpdb.org)

A user guide is available at

<https://www.wwpdb.org/validation/2017/XrayValidationReportHelp>

with specific help available everywhere you see the ⓘ symbol.

The types of validation reports are described at

<http://www.wwpdb.org/validation/2017/FAQs#types>.

---

The following versions of software and data (see [references ⓘ](#)) were used in the production of this report:

MolProbity : 4.02b-467  
Mogul : 1.8.5 (274361), CSD as541be (2020)  
Xtrriage (Phenix) : 1.13  
EDS : 2.36  
buster-report : 1.1.7 (2018)  
Percentile statistics : 20191225.v01 (using entries in the PDB archive December 25th 2019)  
Refmac : 5.8.0158  
CCP4 : 7.0.044 (Gargrove)  
Ideal geometry (proteins) : Engh & Huber (2001)  
Ideal geometry (DNA, RNA) : Parkinson et al. (1996)  
Validation Pipeline (wwPDB-VP) : 2.36

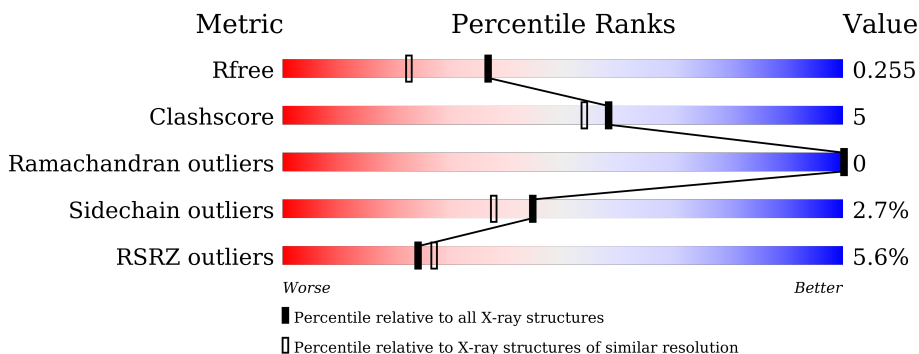
# 1 Overall quality at a glance

The following experimental techniques were used to determine the structure:

*X-RAY DIFFRACTION*

The reported resolution of this entry is 1.90 Å.

Percentile scores (ranging between 0-100) for global validation metrics of the entry are shown in the following graphic. The table shows the number of entries on which the scores are based.



Metric	Whole archive (#Entries)	Similar resolution (#Entries, resolution range(Å))
$R_{free}$	130704	6207 (1.90-1.90)
Clashscore	141614	6847 (1.90-1.90)
Ramachandran outliers	138981	6760 (1.90-1.90)
Sidechain outliers	138945	6760 (1.90-1.90)
RSRZ outliers	127900	6082 (1.90-1.90)

The table below summarises the geometric issues observed across the polymeric chains and their fit to the electron density. The red, orange, yellow and green segments of the lower bar indicate the fraction of residues that contain outliers for  $\geq 3$ , 2, 1 and 0 types of geometric quality criteria respectively. A grey segment represents the fraction of residues that are not modelled. The numeric value for each fraction is indicated below the corresponding segment, with a dot representing fractions  $\leq 5\%$ . The upper red bar (where present) indicates the fraction of residues that have poor fit to the electron density. The numeric value is given above the bar.

Mol	Chain	Length	Quality of chain
1	A	331	 3% 90% 8% ..
1	B	331	 8% 88% 9% ..

## 2 Entry composition [i](#)

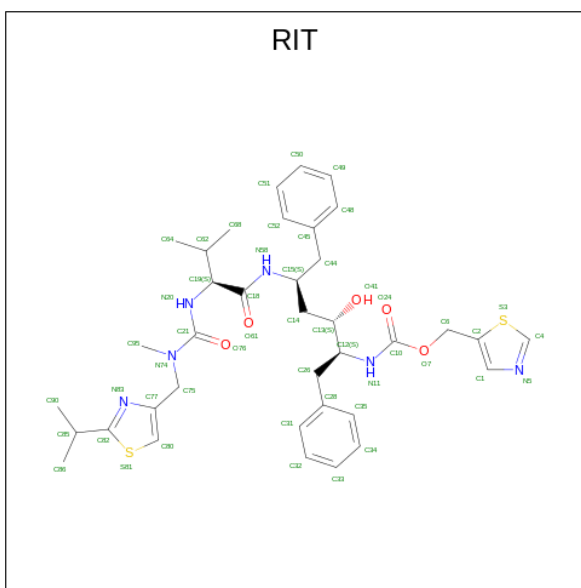
There are 5 unique types of molecules in this entry. The entry contains 6239 atoms, of which 0 are hydrogens and 0 are deuteriums.

In the tables below, the ZeroOcc column contains the number of atoms modelled with zero occupancy, the AltConf column contains the number of residues with at least one atom in alternate conformation and the Trace column contains the number of residues modelled with at most 2 atoms.

- Molecule 1 is a protein called Plasmepsin II.

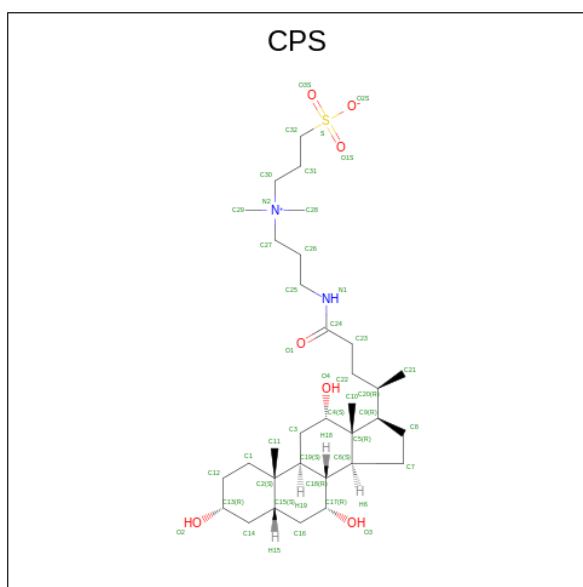
Mol	Chain	Residues	Atoms					ZeroOcc	AltConf	Trace
			Total	C	N	O	S			
1	A	329	Total 2645	C 1713	N 409	O 512	S 11	0	6	0
1	B	326	Total 2612	C 1694	N 401	O 506	S 11	0	5	0

- Molecule 2 is RITONAVIR (three-letter code: RIT) (formula:  $C_{37}H_{48}N_6O_5S_2$ ) (labeled as "Ligand of Interest" by depositor).



Mol	Chain	Residues	Atoms					ZeroOcc	AltConf
			Total	C	N	O	S		
2	A	1	Total 50	C 37	N 6	O 5	S 2	0	0
2	B	1	Total 100	C 74	N 12	O 10	S 4	0	1

- Molecule 3 is 3-[(3-CHOLAMIDOPROPYL)DIMETHYLAMMONIO]-1-PROPANESULFONATE (three-letter code: CPS) (formula:  $C_{32}H_{58}N_2O_7S$ ).



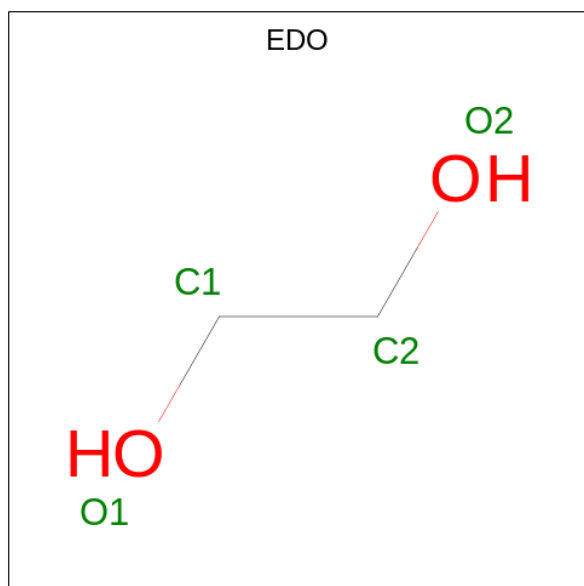
Mol	Chain	Residues	Atoms	ZeroOcc	AltConf
3	A	1	Total C N O S 42 32 2 7 1	0	0
3	A	1	Total C O 26 23 3	0	0
3	A	1	Total C N O 29 24 1 4	0	0
3	A	1	Total C O 23 20 3	0	0
3	A	1	Total C N O 29 24 1 4	0	0
3	A	1	Total C N O S 42 32 2 7 1	0	0
3	A	1	Total C N O 36 30 2 4	0	0
3	B	1	Total C N O 29 24 1 4	0	0
3	B	1	Total C N O 36 30 2 4	0	0
3	B	1	Total C N O 29 24 1 4	0	0
3	B	1	Total C N O 30 25 1 4	0	0
3	B	1	Total C N O 29 24 1 4	0	0
3	B	1	Total C O 22 19 3	0	0
3	B	1	Total C O 27 24 3	0	0

*Continued on next page...*

Continued from previous page...

Mol	Chain	Residues	Atoms				ZeroOcc	AltConf
			Total	C	N	O		
3	B	1	30	25	1	4	0	0

- Molecule 4 is 1,2-ETHANEDIOL (three-letter code: EDO) (formula: C<sub>2</sub>H<sub>6</sub>O<sub>2</sub>).



Mol	Chain	Residues	Atoms			ZeroOcc	AltConf
			Total	C	O		
4	A	1	4	2	2	0	0
4	B	1	4	2	2	0	0

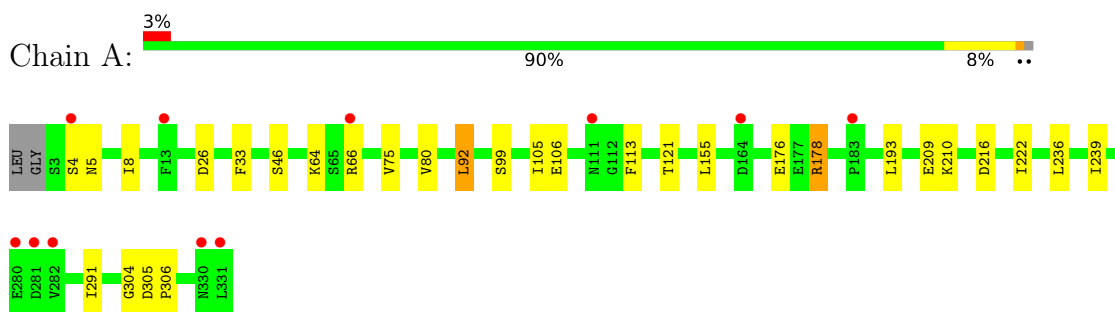
- Molecule 5 is water.

Mol	Chain	Residues	Atoms		ZeroOcc	AltConf
			Total	O		
5	A	204	204	204	0	0
5	B	161	161	161	0	0

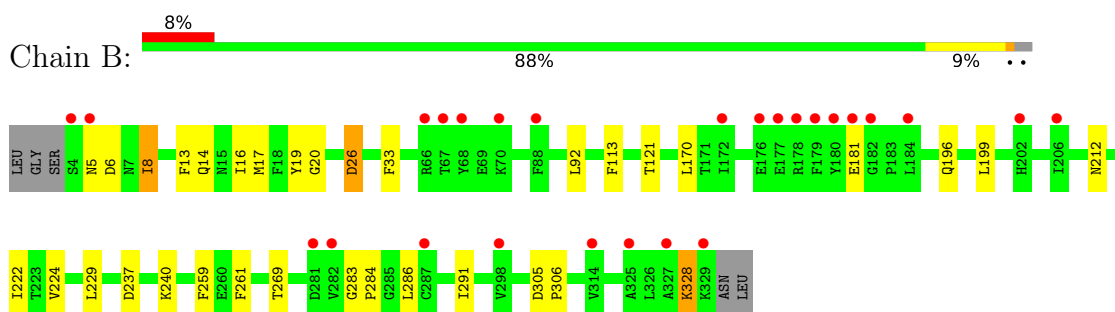
### 3 Residue-property plots [i](#)

These plots are drawn for all protein, RNA, DNA and oligosaccharide chains in the entry. The first graphic for a chain summarises the proportions of the various outlier classes displayed in the second graphic. The second graphic shows the sequence view annotated by issues in geometry and electron density. Residues are color-coded according to the number of geometric quality criteria for which they contain at least one outlier: green = 0, yellow = 1, orange = 2 and red = 3 or more. A red dot above a residue indicates a poor fit to the electron density ( $RSRZ > 2$ ). Stretches of 2 or more consecutive residues without any outlier are shown as a green connector. Residues present in the sample, but not in the model, are shown in grey.

- Molecule 1: Plasmepsin II



- Molecule 1: Plasmepsin II



## 4 Data and refinement statistics

Property	Value	Source
Space group	C 1 2 1	Depositor
Cell constants a, b, c, $\alpha$ , $\beta$ , $\gamma$	150.29Å 70.41Å 106.67Å 90.00° 133.61° 90.00°	Depositor
Resolution (Å)	39.89 – 1.90 39.89 – 1.90	Depositor EDS
% Data completeness (in resolution range)	96.3 (39.89-1.90) 96.3 (39.89-1.90)	Depositor EDS
$R_{merge}$	(Not available)	Depositor
$R_{sym}$	(Not available)	Depositor
$\langle I/\sigma(I) \rangle$ <sup>1</sup>	1.39 (at 1.89Å)	Xtrriage
Refinement program	REFMAC 5.8.0267	Depositor
R, $R_{free}$	0.222 , 0.261 0.219 , 0.255	Depositor DCC
$R_{free}$ test set	3067 reflections (5.00%)	wwPDB-VP
Wilson B-factor (Å <sup>2</sup> )	35.5	Xtrriage
Anisotropy	0.593	Xtrriage
Bulk solvent $k_{sol}$ (e/Å <sup>3</sup> ), $B_{sol}$ (Å <sup>2</sup> )	0.36 , 49.4	EDS
L-test for twinning <sup>2</sup>	$\langle  L  \rangle = 0.48$ , $\langle L^2 \rangle = 0.32$	Xtrriage
Estimated twinning fraction	0.108 for h+2*k,-h-l 0.026 for h,-k,-h-l 0.029 for -h-2*k,-k,l	Xtrriage
$F_o, F_c$ correlation	0.96	EDS
Total number of atoms	6239	wwPDB-VP
Average B, all atoms (Å <sup>2</sup> )	51.0	wwPDB-VP

Xtrriage's analysis on translational NCS is as follows: *The largest off-origin peak in the Patterson function is 5.10% of the height of the origin peak. No significant pseudotranslation is detected.*

<sup>1</sup>Intensities estimated from amplitudes.

<sup>2</sup>Theoretical values of  $\langle |L| \rangle$ ,  $\langle L^2 \rangle$  for acentric reflections are 0.5, 0.333 respectively for untwinned datasets, and 0.375, 0.2 for perfectly twinned datasets.

## 5 Model quality [i](#)

### 5.1 Standard geometry [i](#)

Bond lengths and bond angles in the following residue types are not validated in this section: EDO, RIT, CPS

The Z score for a bond length (or angle) is the number of standard deviations the observed value is removed from the expected value. A bond length (or angle) with  $|Z| > 5$  is considered an outlier worth inspection. RMSZ is the root-mean-square of all Z scores of the bond lengths (or angles).

Mol	Chain	Bond lengths		Bond angles	
		RMSZ	# Z  >5	RMSZ	# Z  >5
1	A	0.68	0/2720	0.74	0/3701
1	B	0.64	0/2687	0.72	0/3657
All	All	0.66	0/5407	0.73	0/7358

Chiral center outliers are detected by calculating the chiral volume of a chiral center and verifying if the center is modelled as a planar moiety or with the opposite hand. A planarity outlier is detected by checking planarity of atoms in a peptide group, atoms in a mainchain group or atoms of a sidechain that are expected to be planar.

Mol	Chain	#Chirality outliers	#Planarity outliers
1	A	0	1
1	B	0	1
All	All	0	2

There are no bond length outliers.

There are no bond angle outliers.

There are no chirality outliers.

All (2) planarity outliers are listed below:

Mol	Chain	Res	Type	Group
1	A	33	PHE	Peptide
1	B	33	PHE	Peptide

### 5.2 Too-close contacts [i](#)

In the following table, the Non-H and H(model) columns list the number of non-hydrogen atoms and hydrogen atoms in the chain respectively. The H(added) column lists the number of hydrogen atoms added and optimized by MolProbity. The Clashes column lists the number of clashes within the asymmetric unit, whereas Symm-Clashes lists symmetry-related clashes.



Mol	Chain	Non-H	H(model)	H(added)	Clashes	Symm-Clashes
1	A	2645	0	2576	17	0
1	B	2612	0	2543	17	0
2	A	50	0	48	0	0
2	B	100	0	96	9	0
3	A	227	0	314	13	0
3	B	232	0	318	4	0
4	A	4	0	6	0	0
4	B	4	0	6	1	0
5	A	204	0	0	0	0
5	B	161	0	0	0	0
All	All	6239	0	5907	57	0

The all-atom clashscore is defined as the number of clashes found per 1000 atoms (including hydrogen atoms). The all-atom clashscore for this structure is 5.

All (57) close contacts within the same asymmetric unit are listed below, sorted by their clash magnitude.

Atom-1	Atom-2	Interatomic distance (Å)	Clash overlap (Å)
3:A:407:CPS:H10B	3:A:407:CPS:H22A	1.59	0.84
3:A:403:CPS:H21B	3:A:403:CPS:H10B	1.73	0.70
1:B:237:ASP:HA	4:B:410:EDO:H11	1.73	0.70
1:A:5:ASN:HB2	1:A:176:GLU:OE2	2.00	0.61
3:A:407:CPS:H22A	3:A:407:CPS:C10	2.31	0.61
1:A:26:ASP:OD2	1:A:66:ARG:HG2	2.02	0.59
1:A:80:VAL:HG22	3:A:402:CPS:H21A	1.84	0.58
3:A:407:CPS:H10B	3:A:407:CPS:C22	2.31	0.58
3:A:407:CPS:H21	3:A:407:CPS:C24	2.35	0.57
1:B:13:PHE:CE2	1:B:121[B]:THR:HG21	2.41	0.55
1:A:209:GLU:HG2	1:A:210:LYS:HG2	1.88	0.54
1:A:176:GLU:OE1	1:A:178:ARG:HD3	2.08	0.53
1:B:14:GLN:HB3	3:B:402:CPS:H23	1.90	0.53
1:A:239:ILE:HG21	3:A:405:CPS:H11B	1.90	0.53
1:B:19:TYR:CE2	1:B:121[B]:THR:HG22	2.44	0.53
3:B:402:CPS:H10B	3:B:402:CPS:H21A	1.92	0.52
2:B:401[A]:RIT:C49	2:B:401[A]:RIT:H953	2.40	0.52
3:A:407:CPS:H28A	3:A:407:CPS:H25	1.92	0.52
1:B:26:ASP:C	1:B:26:ASP:OD1	2.48	0.50
1:A:5:ASN:HD22	1:A:176:GLU:HG2	1.79	0.48
1:B:8:ILE:HD11	1:B:20:GLY:HA3	1.96	0.48
1:B:8:ILE:HG23	1:B:170:LEU:HB3	1.94	0.48
2:B:401[A]:RIT:N11	2:B:401[A]:RIT:H35	2.28	0.48
2:B:401[B]:RIT:H35	2:B:401[B]:RIT:N11	2.28	0.48

*Continued on next page...*

*Continued from previous page...*

Atom-1	Atom-2	Interatomic distance (Å)	Clash overlap (Å)
3:B:404:CPS:H21A	3:B:404:CPS:H10B	1.96	0.47
1:A:222:ILE:O	1:A:291:ILE:HA	2.14	0.47
3:A:407:CPS:H28A	3:A:407:CPS:C25	2.45	0.47
1:B:305:ASP:HB3	1:B:306:PRO:HD3	1.97	0.47
2:B:401[A]:RIT:H35	2:B:401[A]:RIT:C10	2.45	0.46
3:B:402:CPS:H7A	3:B:403:CPS:H3	1.97	0.46
1:A:75:VAL:CG1	1:A:105:ILE:HG23	2.46	0.45
2:B:401[B]:RIT:H35	2:B:401[B]:RIT:C10	2.46	0.45
1:B:16:ILE:HG23	1:B:17:MET:HG2	1.98	0.45
1:B:283:GLY:HA2	1:B:286:LEU:HD12	1.99	0.44
1:A:155:LEU:HD12	1:A:155:LEU:C	2.38	0.44
1:A:305:ASP:HB3	1:A:306:PRO:HD3	2.00	0.44
1:B:181:GLU:HG2	1:B:328:LYS:HG2	1.99	0.44
1:A:4:SER:OG	1:A:5:ASN:N	2.49	0.43
3:A:407:CPS:C10	3:A:407:CPS:C22	2.93	0.43
1:B:199:LEU:HD13	1:B:261:PHE:HB3	2.01	0.43
1:A:46:SER:HB2	1:A:106:GLU:HG2	2.00	0.42
1:A:75:VAL:HG11	1:A:105:ILE:HG23	2.01	0.42
3:A:403:CPS:H10B	3:A:403:CPS:C21	2.46	0.42
3:A:403:CPS:C21	3:A:403:CPS:C10	2.98	0.42
1:B:224:VAL:CG2	1:B:229:LEU:HB2	2.49	0.42
2:B:401[A]:RIT:C10	2:B:401[A]:RIT:C35	2.97	0.42
3:A:403:CPS:H21B	3:A:403:CPS:C10	2.46	0.42
1:A:5:ASN:CB	1:A:176:GLU:OE2	2.67	0.42
2:B:401[B]:RIT:C10	2:B:401[B]:RIT:C35	2.98	0.42
1:A:216:ASP:O	1:A:304:GLY:HA2	2.20	0.42
1:B:196:GLN:OE1	1:B:212:ASN:ND2	2.47	0.41
1:A:92[B]:LEU:HD21	1:A:99:SER:HB3	2.03	0.41
1:B:259:PHE:O	1:B:269:THR:HA	2.21	0.41
2:B:401[A]:RIT:N11	2:B:401[A]:RIT:C35	2.84	0.41
2:B:401[B]:RIT:N11	2:B:401[B]:RIT:C35	2.84	0.41
1:B:222:ILE:O	1:B:291:ILE:HA	2.21	0.40
1:B:283:GLY:HA3	1:B:284:PRO:HA	1.95	0.40

There are no symmetry-related clashes.

## 5.3 Torsion angles [i](#)

### 5.3.1 Protein backbone [i](#)

In the following table, the Percentiles column shows the percent Ramachandran outliers of the chain as a percentile score with respect to all X-ray entries followed by that with respect to entries of similar resolution.

The Analysed column shows the number of residues for which the backbone conformation was analysed, and the total number of residues.

Mol	Chain	Analysed	Favoured	Allowed	Outliers	Percentiles	
1	A	333/331 (101%)	319 (96%)	14 (4%)	0	100	100
1	B	329/331 (99%)	318 (97%)	11 (3%)	0	100	100
All	All	662/662 (100%)	637 (96%)	25 (4%)	0	100	100

There are no Ramachandran outliers to report.

### 5.3.2 Protein sidechains [i](#)

In the following table, the Percentiles column shows the percent sidechain outliers of the chain as a percentile score with respect to all X-ray entries followed by that with respect to entries of similar resolution.

The Analysed column shows the number of residues for which the sidechain conformation was analysed, and the total number of residues.

Mol	Chain	Analysed	Rotameric	Outliers	Percentiles	
1	A	300/295 (102%)	290 (97%)	10 (3%)	38	29
1	B	296/295 (100%)	288 (97%)	8 (3%)	44	38
All	All	596/590 (101%)	578 (97%)	18 (3%)	44	33

All (18) residues with a non-rotameric sidechain are listed below:

Mol	Chain	Res	Type
1	A	8	ILE
1	A	64	LYS
1	A	92[A]	LEU
1	A	92[B]	LEU
1	A	113	PHE
1	A	121	THR
1	A	178	ARG
1	A	193	LEU

*Continued on next page...*

*Continued from previous page...*

Mol	Chain	Res	Type
1	A	236[A]	LEU
1	A	236[B]	LEU
1	B	5	ASN
1	B	6	ASP
1	B	8	ILE
1	B	26	ASP
1	B	92	LEU
1	B	113	PHE
1	B	240	LYS
1	B	328	LYS

Sometimes sidechains can be flipped to improve hydrogen bonding and reduce clashes. All (1) such sidechains are listed below:

Mol	Chain	Res	Type
1	B	277	GLN

### 5.3.3 RNA [i](#)

There are no RNA molecules in this entry.

## 5.4 Non-standard residues in protein, DNA, RNA chains [i](#)

There are no non-standard protein/DNA/RNA residues in this entry.

## 5.5 Carbohydrates [i](#)

There are no monosaccharides in this entry.

## 5.6 Ligand geometry [i](#)

20 ligands are modelled in this entry.

In the following table, the Counts columns list the number of bonds (or angles) for which Mogul statistics could be retrieved, the number of bonds (or angles) that are observed in the model and the number of bonds (or angles) that are defined in the Chemical Component Dictionary. The Link column lists molecule types, if any, to which the group is linked. The Z score for a bond length (or angle) is the number of standard deviations the observed value is removed from the expected value. A bond length (or angle) with  $|Z| > 2$  is considered an outlier worth inspection. RMSZ is the root-mean-square of all Z scores of the bond lengths (or angles).

Mol	Type	Chain	Res	Link	Bond lengths			Bond angles		
					Counts	RMSZ	# Z  > 2	Counts	RMSZ	# Z  > 2
3	CPS	B	409	-	33,33,45	0.42	0	52,52,70	0.65	0
3	CPS	B	404	-	32,32,45	0.41	0	51,51,70	0.61	0
3	CPS	A	404	-	32,32,45	0.44	0	51,51,70	0.52	0
3	CPS	A	402	-	45,45,45	0.40	0	69,70,70	0.66	1 (1%)
3	CPS	B	403	-	39,39,45	0.38	0	61,61,70	0.52	0
4	EDO	B	410	-	3,3,3	0.23	0	2,2,2	0.16	0
4	EDO	A	409	-	3,3,3	0.14	0	2,2,2	0.05	0
3	CPS	B	405	-	33,33,45	0.39	0	52,52,70	0.46	0
3	CPS	B	407	-	25,25,45	0.51	0	37,41,70	0.58	0
2	RIT	A	401	-	48,53,53	0.95	2 (4%)	55,71,71	1.42	7 (12%)
3	CPS	A	405	-	26,26,45	0.48	0	40,43,70	0.51	0
3	CPS	A	403	-	29,29,45	0.40	0	47,47,70	0.75	2 (4%)
3	CPS	B	402	-	32,32,45	0.40	0	51,51,70	0.52	0
3	CPS	B	406	-	32,32,45	0.42	0	51,51,70	0.55	0
3	CPS	A	406	-	32,32,45	0.42	0	51,51,70	0.46	0
3	CPS	A	407	-	45,45,45	0.41	0	69,70,70	0.99	4 (5%)
2	RIT	B	401[B]	-	48,53,53	1.00	2 (4%)	55,71,71	1.43	7 (12%)
3	CPS	B	408	-	30,30,45	0.43	0	47,48,70	0.51	0
2	RIT	B	401[A]	-	48,53,53	1.00	2 (4%)	55,71,71	1.41	7 (12%)
3	CPS	A	408	-	39,39,45	0.41	0	61,61,70	0.52	0

In the following table, the Chirals column lists the number of chiral outliers, the number of chiral centers analysed, the number of these observed in the model and the number defined in the Chemical Component Dictionary. Similar counts are reported in the Torsion and Rings columns. '-' means no outliers of that kind were identified.

Mol	Type	Chain	Res	Link	Chirals	Torsions	Rings
3	CPS	B	409	-	-	6/11/76/90	0/4/4/4
3	CPS	B	404	-	-	5/9/74/90	0/4/4/4
3	CPS	A	404	-	-	0/9/74/90	0/4/4/4
3	CPS	A	402	-	-	5/25/90/90	0/4/4/4
3	CPS	B	403	-	-	0/17/82/90	0/4/4/4
4	EDO	B	410	-	-	1/1/1/1	-
4	EDO	A	409	-	-	1/1/1/1	-
3	CPS	B	405	-	-	2/11/76/90	0/4/4/4
3	CPS	B	407	-	-	-	0/4/4/4
2	RIT	A	401	-	-	5/49/53/53	0/4/4/4
3	CPS	A	405	-	-	-	0/4/4/4
3	CPS	A	403	-	-	5/6/71/90	0/4/4/4
3	CPS	B	402	-	-	5/9/74/90	0/4/4/4

Continued on next page...

Continued from previous page...

Mol	Type	Chain	Res	Link	Chirals	Torsions	Rings
3	CPS	B	406	-	-	1/9/74/90	0/4/4/4
3	CPS	A	406	-	-	0/9/74/90	0/4/4/4
3	CPS	A	407	-	-	16/25/90/90	0/4/4/4
2	RIT	B	401[B]	-	-	7/49/53/53	0/4/4/4
3	CPS	B	408	-	-	0/7/72/90	0/4/4/4
2	RIT	B	401[A]	-	-	6/49/53/53	0/4/4/4
3	CPS	A	408	-	-	2/17/82/90	0/4/4/4

All (6) bond length outliers are listed below:

Mol	Chain	Res	Type	Atoms	Z	Observed(Å)	Ideal(Å)
2	B	401[B]	RIT	O7-C10	5.52	1.45	1.35
2	B	401[A]	RIT	O7-C10	5.47	1.45	1.35
2	A	401	RIT	O7-C10	5.38	1.45	1.35
2	B	401[A]	RIT	C80-S81	2.32	1.74	1.70
2	B	401[B]	RIT	C80-S81	2.14	1.74	1.70
2	A	401	RIT	C80-S81	2.03	1.73	1.70

All (28) bond angle outliers are listed below:

Mol	Chain	Res	Type	Atoms	Z	Observed(°)	Ideal(°)
2	B	401[A]	RIT	C1-N5-C4	4.90	113.42	105.78
2	B	401[B]	RIT	C1-N5-C4	4.90	113.42	105.78
2	A	401	RIT	C1-N5-C4	4.86	113.37	105.78
2	A	401	RIT	C14-C15-C44	-4.73	106.46	112.42
2	B	401[A]	RIT	O7-C10-N11	3.77	118.17	110.50
2	B	401[B]	RIT	O7-C10-N11	3.74	118.09	110.50
2	B	401[B]	RIT	C77-C75-N74	-3.65	107.33	113.60
2	B	401[B]	RIT	C85-C82-N83	3.63	132.00	125.08
2	B	401[A]	RIT	C14-C15-C44	-3.59	107.90	112.42
2	B	401[A]	RIT	C85-C82-N83	3.46	131.66	125.08
2	B	401[B]	RIT	C14-C15-C44	-3.43	108.10	112.42
2	A	401	RIT	C75-C77-C80	-3.29	124.67	129.62
2	B	401[A]	RIT	C75-C77-C80	-3.12	124.92	129.62
2	A	401	RIT	O7-C10-N11	3.05	116.70	110.50
2	A	401	RIT	O7-C10-O24	-3.01	118.48	124.25
3	A	407	CPS	C5-C9-C20	2.94	123.01	119.50
2	A	401	RIT	C85-C82-N83	2.85	130.51	125.08
2	B	401[B]	RIT	C75-C77-C80	-2.83	125.36	129.62
2	B	401[A]	RIT	O7-C10-O24	-2.82	118.83	124.25
2	B	401[B]	RIT	O7-C10-O24	-2.82	118.83	124.25

Continued on next page...

*Continued from previous page...*

Mol	Chain	Res	Type	Atoms	Z	Observed(°)	Ideal(°)
3	A	407	CPS	C8-C9-C5	-2.76	100.85	103.55
3	A	407	CPS	C25-N1-C24	2.74	127.93	122.84
2	A	401	RIT	C77-C75-N74	-2.71	108.95	113.60
3	A	403	CPS	C5-C9-C20	2.64	122.65	119.50
3	A	403	CPS	C8-C9-C5	-2.46	101.14	103.55
3	A	402	CPS	C9-C5-C6	-2.46	97.62	100.09
3	A	407	CPS	C9-C5-C6	-2.42	97.65	100.09
2	B	401[A]	RIT	C77-C75-N74	-2.25	109.74	113.60

There are no chirality outliers.

All (67) torsion outliers are listed below:

Mol	Chain	Res	Type	Atoms
2	A	401	RIT	N74-C75-C77-C80
2	A	401	RIT	N74-C75-C77-N83
2	B	401[B]	RIT	N74-C75-C77-C80
2	B	401[B]	RIT	N74-C75-C77-N83
3	A	402	CPS	N2-C30-C31-C32
3	A	402	CPS	C31-C30-N2-C28
3	A	402	CPS	C30-C31-C32-S
3	A	403	CPS	C21-C20-C22-C23
3	A	407	CPS	C22-C20-C9-C5
3	A	407	CPS	C21-C20-C9-C8
3	A	407	CPS	C26-C27-N2-C29
3	A	407	CPS	C26-C27-N2-C30
2	A	401	RIT	N11-C10-O7-C6
3	A	403	CPS	C22-C20-C9-C8
3	A	407	CPS	C22-C20-C9-C8
3	A	407	CPS	C23-C24-N1-C25
2	A	401	RIT	O24-C10-O7-C6
3	A	407	CPS	C26-C27-N2-C28
3	A	403	CPS	C9-C20-C22-C23
3	A	407	CPS	O1-C24-N1-C25
3	A	402	CPS	C31-C30-N2-C29
3	A	402	CPS	C31-C30-N2-C27
3	A	403	CPS	C21-C20-C9-C8
3	A	403	CPS	C22-C20-C9-C5
3	A	408	CPS	C9-C20-C22-C23
3	A	408	CPS	C21-C20-C22-C23
3	B	404	CPS	C21-C20-C9-C5
3	A	407	CPS	N1-C25-C26-C27
3	A	407	CPS	C21-C20-C9-C5

*Continued on next page...*

*Continued from previous page...*

Mol	Chain	Res	Type	Atoms
3	B	404	CPS	C22-C20-C9-C8
3	A	407	CPS	C31-C32-S-O2S
3	B	402	CPS	C21-C20-C9-C5
4	B	410	EDO	O1-C1-C2-O2
3	B	402	CPS	C22-C20-C9-C8
2	B	401[A]	RIT	N20-C21-N74-C75
3	B	402	CPS	C20-C22-C23-C24
3	B	406	CPS	C20-C22-C23-C24
2	B	401[A]	RIT	O76-C21-N74-C75
3	B	404	CPS	C21-C20-C9-C8
3	A	407	CPS	C31-C32-S-O3S
3	A	407	CPS	C31-C32-S-O1S
2	B	401[A]	RIT	C13-C14-C15-N58
2	B	401[B]	RIT	C13-C14-C15-N58
3	B	402	CPS	C21-C20-C9-C8
3	A	407	CPS	C25-C26-C27-N2
2	B	401[B]	RIT	N58-C18-C19-N20
2	B	401[B]	RIT	O61-C18-C19-N20
3	B	405	CPS	C23-C24-N1-C25
3	B	409	CPS	C23-C24-N1-C25
3	B	404	CPS	C22-C20-C9-C5
3	B	409	CPS	C22-C20-C9-C5
3	A	407	CPS	C22-C23-C24-O1
3	B	405	CPS	O1-C24-N1-C25
3	B	409	CPS	O1-C24-N1-C25
3	B	409	CPS	C22-C20-C9-C8
3	B	404	CPS	C21-C20-C22-C23
3	B	409	CPS	C21-C20-C9-C5
3	A	407	CPS	C22-C23-C24-N1
4	A	409	EDO	O1-C1-C2-O2
3	B	409	CPS	C9-C20-C22-C23
2	A	401	RIT	N58-C18-C19-N20
2	B	401[A]	RIT	O76-C21-N74-C95
2	B	401[A]	RIT	N83-C82-C85-C86
2	B	401[B]	RIT	N58-C18-C19-C62
2	B	401[A]	RIT	O41-C13-C14-C15
2	B	401[B]	RIT	O41-C13-C14-C15
3	B	402	CPS	C22-C20-C9-C5

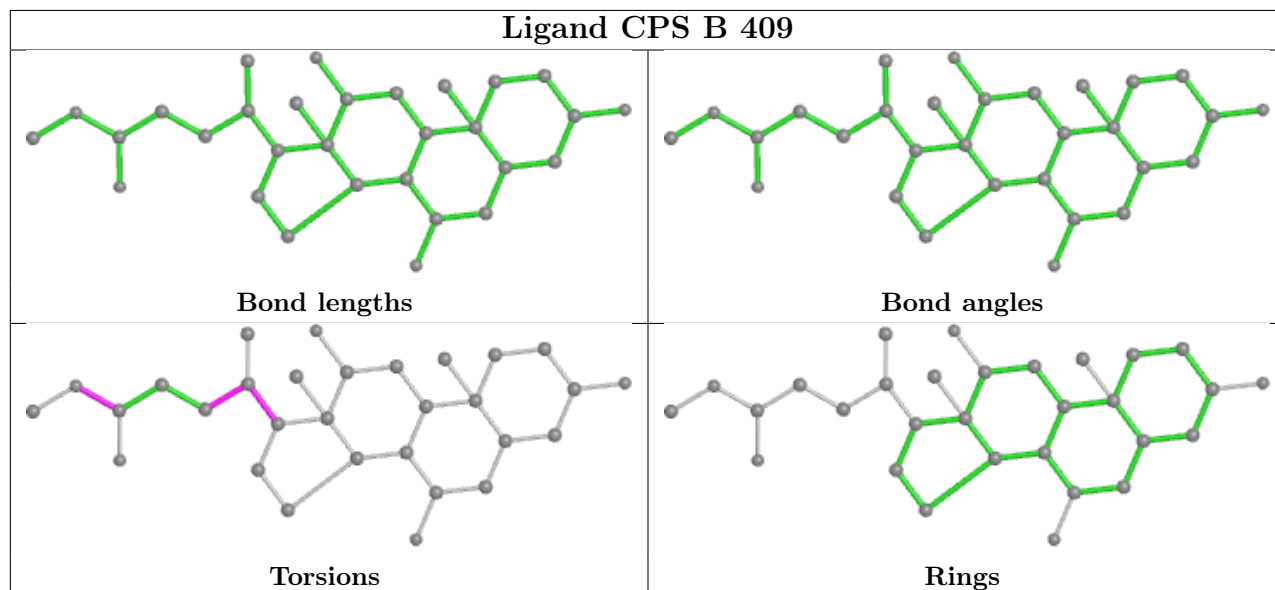
There are no ring outliers.

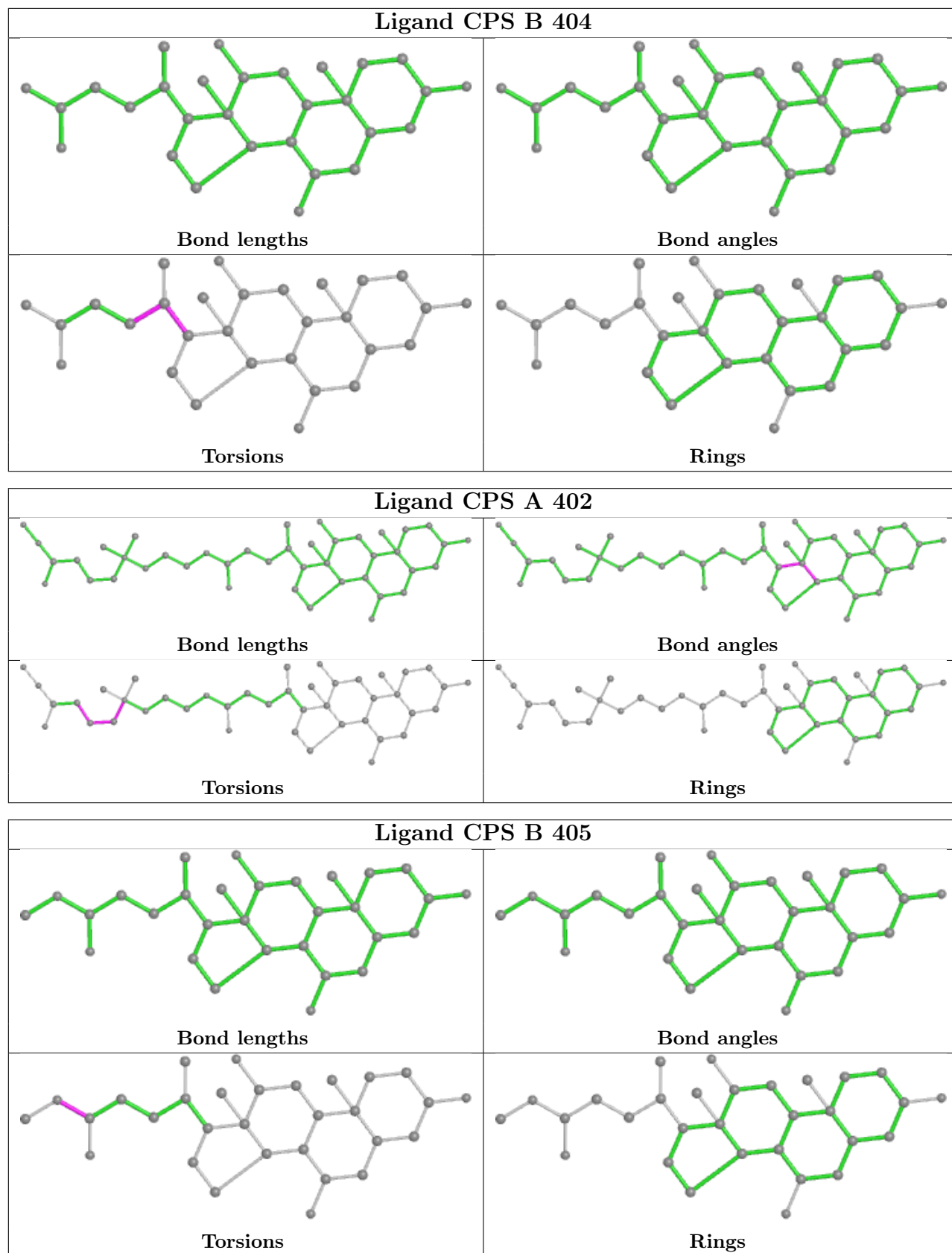
10 monomers are involved in 27 short contacts:

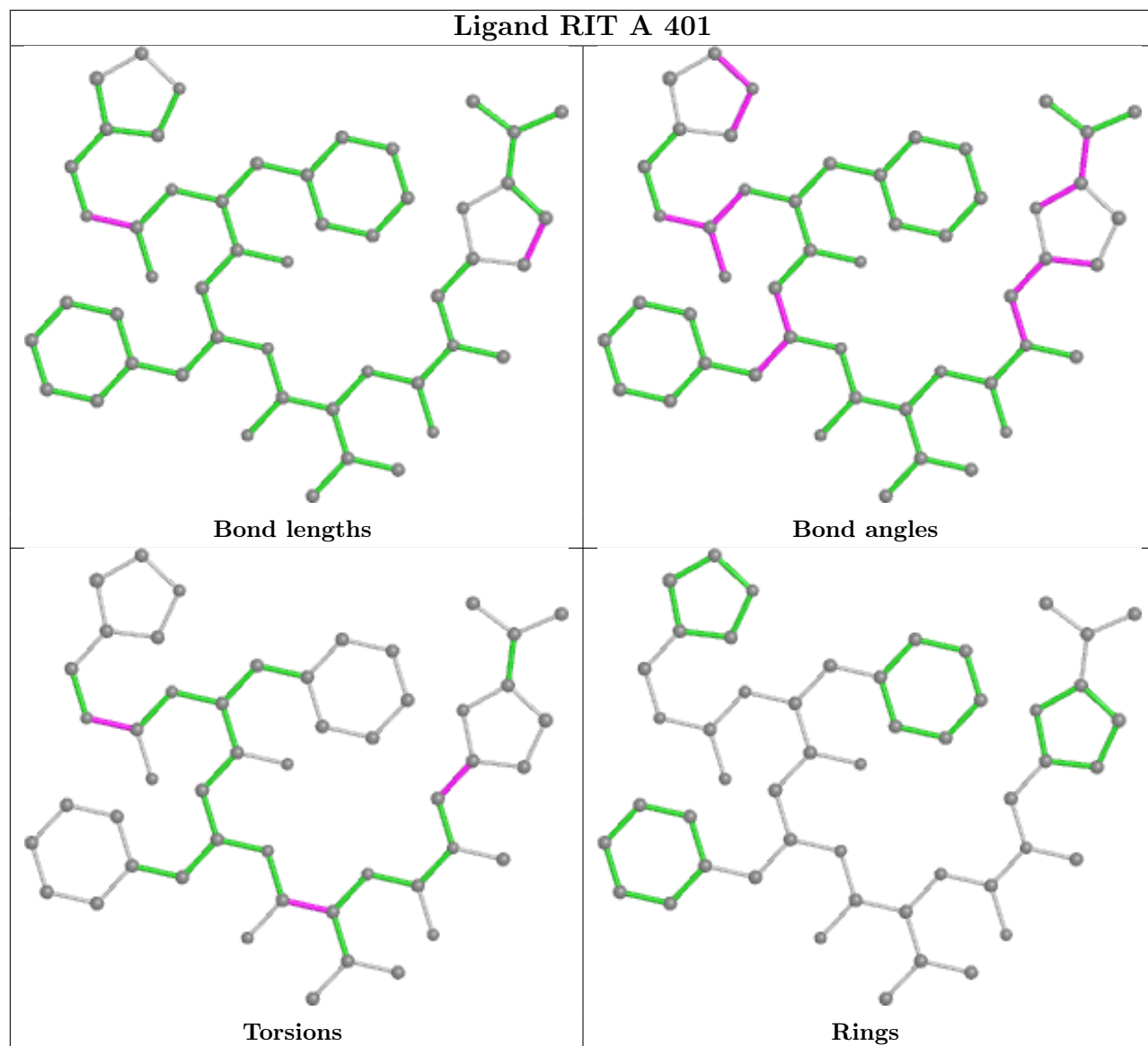


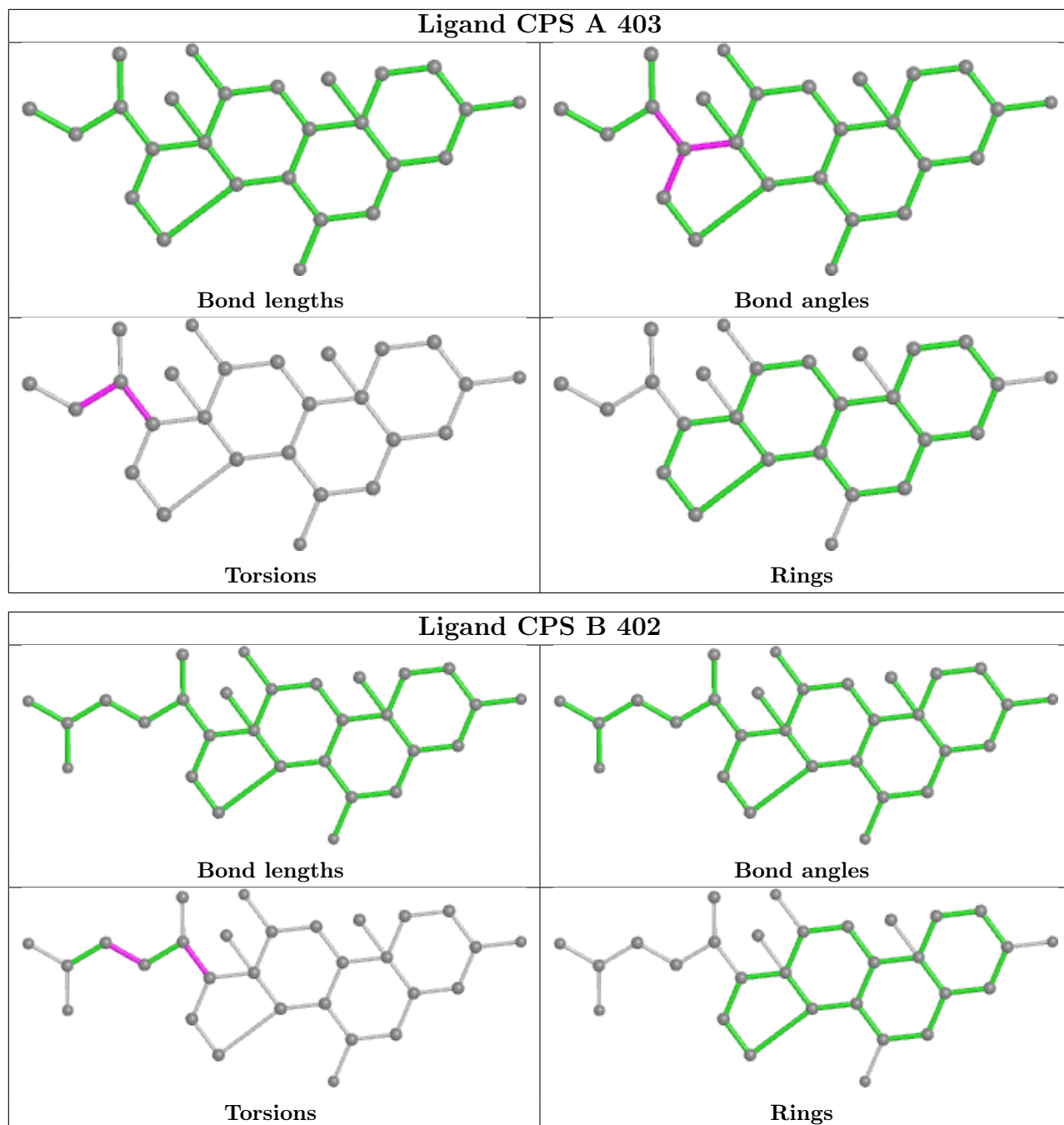
Mol	Chain	Res	Type	Clashes	Symm-Clashes
3	B	404	CPS	1	0
3	A	402	CPS	1	0
3	B	403	CPS	1	0
4	B	410	EDO	1	0
3	A	405	CPS	1	0
3	A	403	CPS	4	0
3	B	402	CPS	3	0
3	A	407	CPS	7	0
2	B	401[B]	RIT	4	0
2	B	401[A]	RIT	5	0

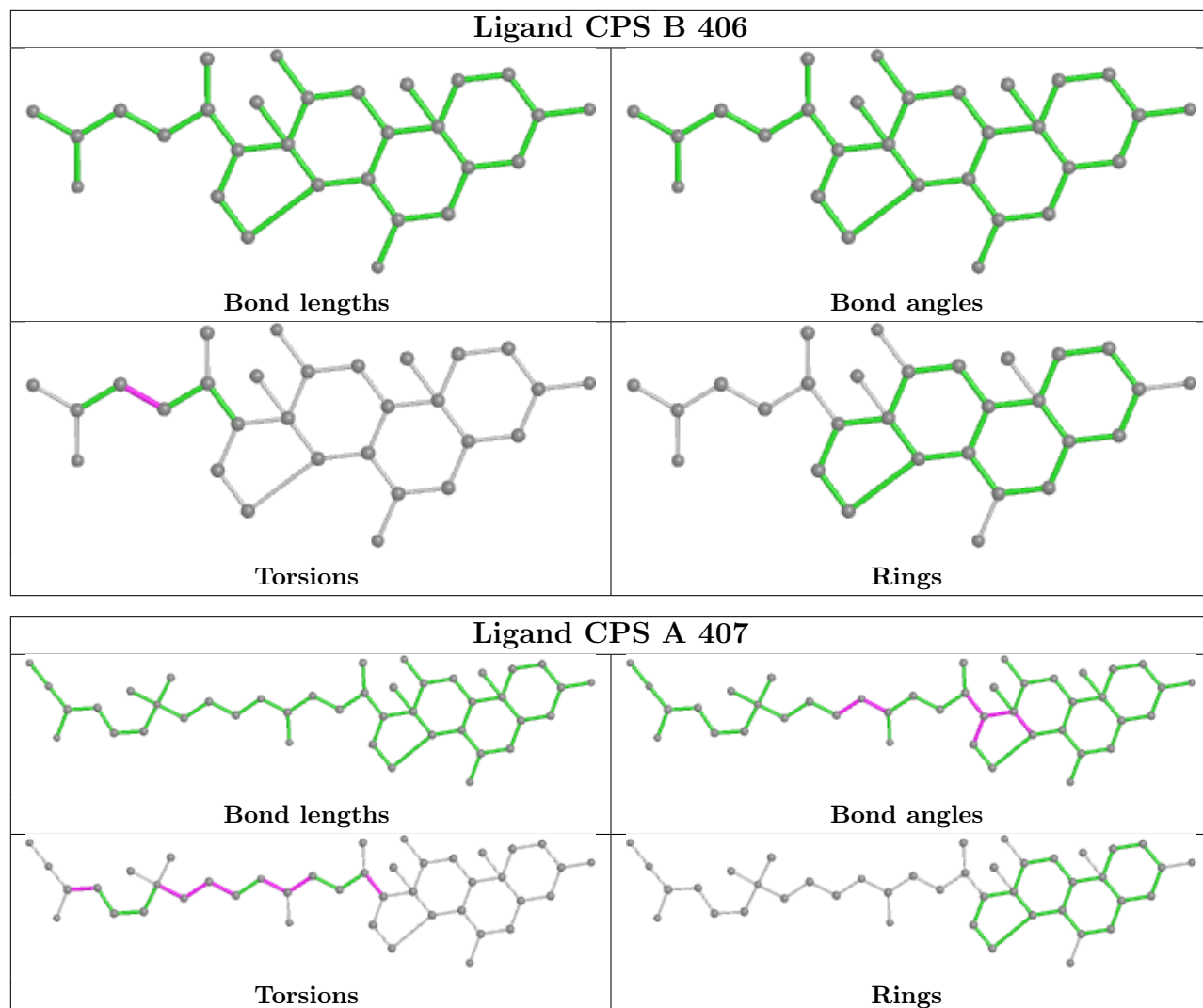
The following is a two-dimensional graphical depiction of Mogul quality analysis of bond lengths, bond angles, torsion angles, and ring geometry for all instances of the Ligand of Interest. In addition, ligands with molecular weight > 250 and outliers as shown on the validation Tables will also be included. For torsion angles, if less than 5% of the Mogul distribution of torsion angles is within 10 degrees of the torsion angle in question, then that torsion angle is considered an outlier. Any bond that is central to one or more torsion angles identified as an outlier by Mogul will be highlighted in the graph. For rings, the root-mean-square deviation (RMSD) between the ring in question and similar rings identified by Mogul is calculated over all ring torsion angles. If the average RMSD is greater than 60 degrees and the minimal RMSD between the ring in question and any Mogul-identified rings is also greater than 60 degrees, then that ring is considered an outlier. The outliers are highlighted in purple. The color gray indicates Mogul did not find sufficient equivalents in the CSD to analyse the geometry.

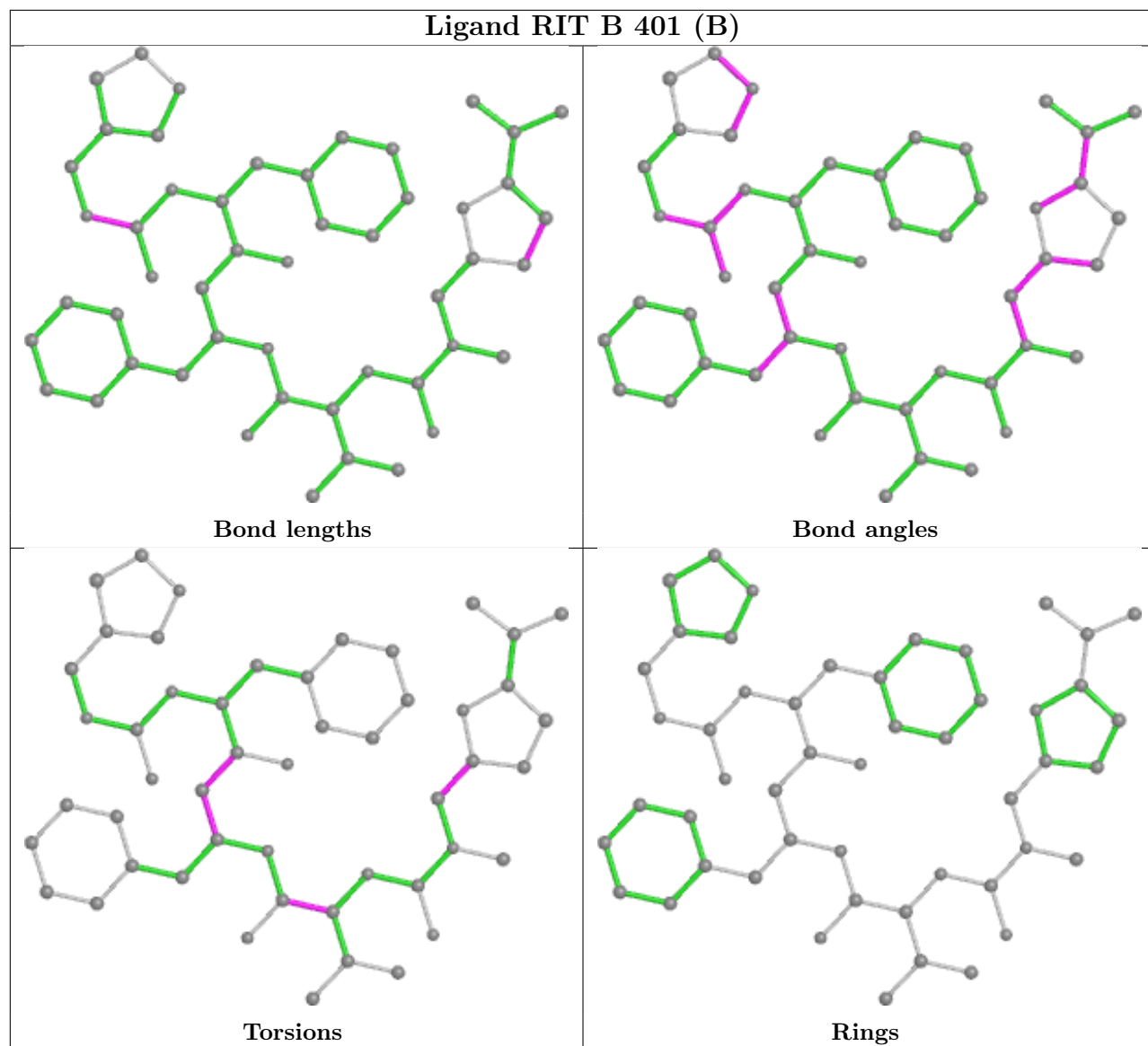


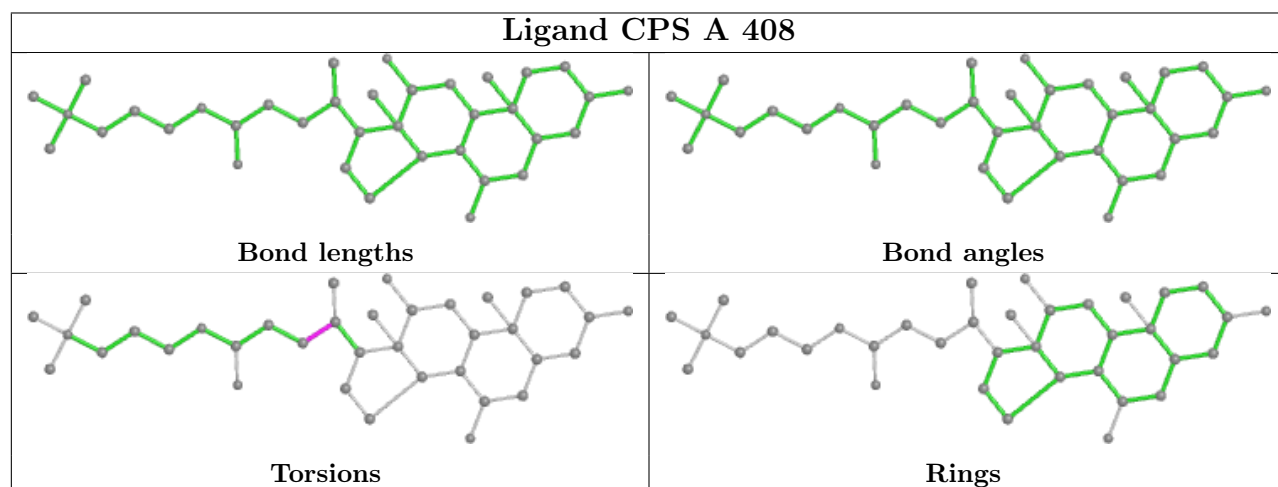
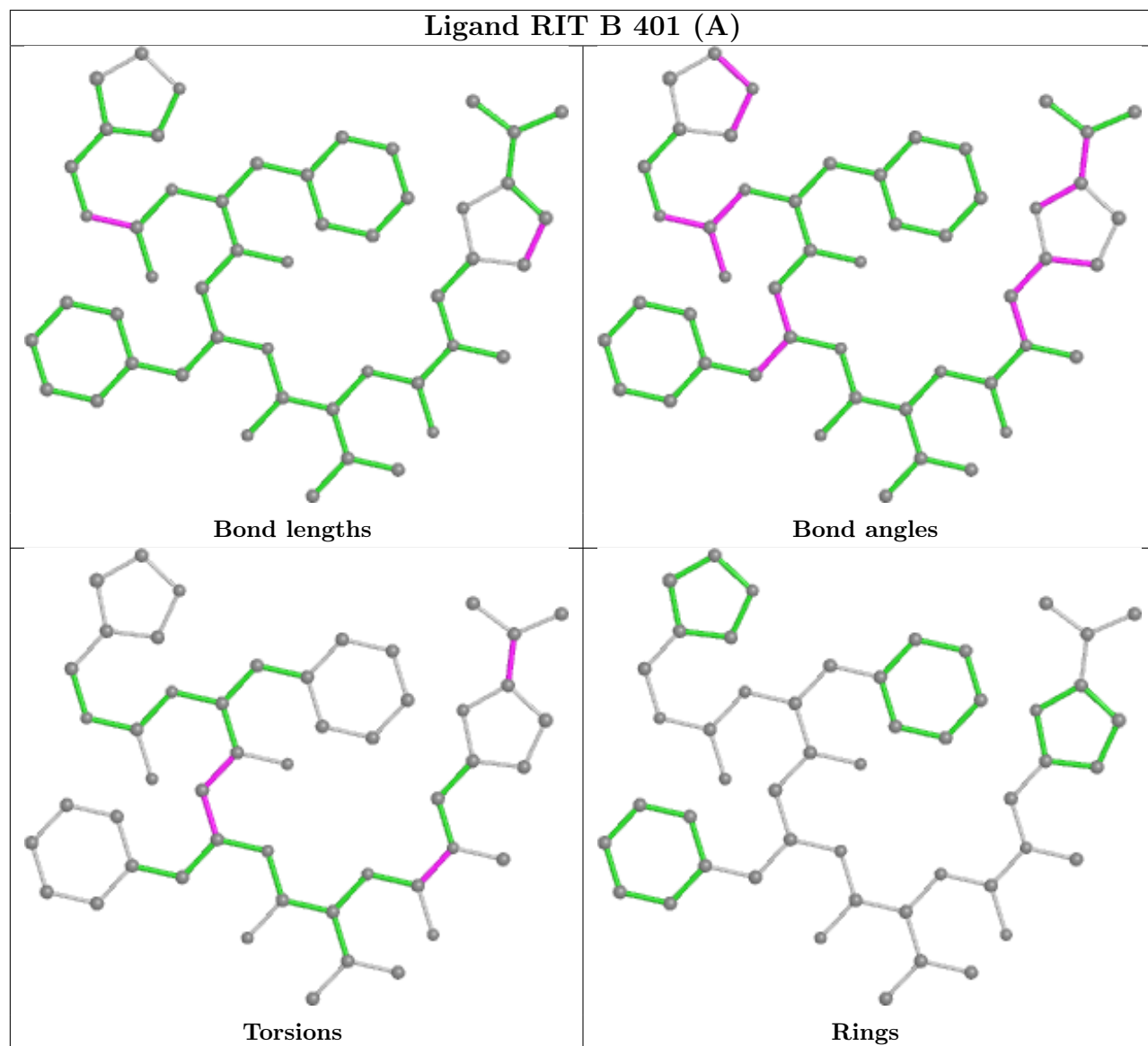












## 5.7 Other polymers [i](#)

There are no such residues in this entry.

## 5.8 Polymer linkage issues [i](#)

There are no chain breaks in this entry.



## 6 Fit of model and data

### 6.1 Protein, DNA and RNA chains

In the following table, the column labelled ‘#RSRZ > 2’ contains the number (and percentage) of RSRZ outliers, followed by percent RSRZ outliers for the chain as percentile scores relative to all X-ray entries and entries of similar resolution. The OWAB column contains the minimum, median, 95<sup>th</sup> percentile and maximum values of the occupancy-weighted average B-factor per residue. The column labelled ‘Q < 0.9’ lists the number of (and percentage) of residues with an average occupancy less than 0.9.

Mol	Chain	Analysed	<RSRZ>	#RSRZ>2	OWAB(Å <sup>2</sup> )	Q<0.9
1	A	329/331 (99%)	0.28	11 (3%) 46 49	30, 46, 65, 94	0
1	B	326/331 (98%)	0.64	26 (7%) 12 13	32, 52, 81, 107	0
All	All	655/662 (98%)	0.46	37 (5%) 24 27	30, 49, 76, 107	0

All (37) RSRZ outliers are listed below:

Mol	Chain	Res	Type	RSRZ
1	B	282	VAL	7.4
1	B	180	TYR	4.5
1	A	281	ASP	4.2
1	A	330	ASN	4.2
1	B	5	ASN	4.1
1	A	331	LEU	4.1
1	A	282	VAL	4.0
1	B	179	PHE	3.9
1	B	281	ASP	3.6
1	A	66	ARG	3.5
1	B	298	VAL	3.3
1	B	66	ARG	3.2
1	B	329	LYS	2.9
1	B	172	ILE	2.8
1	B	88	PHE	2.8
1	B	176	GLU	2.8
1	B	4	SER	2.7
1	A	111	ASN	2.7
1	B	67	THR	2.6
1	B	327	ALA	2.6
1	B	206	ILE	2.5
1	B	70	LYS	2.4
1	B	182	GLY	2.4
1	A	4	SER	2.4

*Continued on next page...*

*Continued from previous page...*

Mol	Chain	Res	Type	RSRZ
1	A	13	PHE	2.4
1	A	164	ASP	2.4
1	B	178	ARG	2.3
1	B	184	LEU	2.3
1	B	325	ALA	2.3
1	B	177	GLU	2.3
1	B	287	CYS	2.3
1	B	68	TYR	2.3
1	B	181	GLU	2.2
1	B	202	HIS	2.1
1	B	314	VAL	2.1
1	A	183	PRO	2.1
1	A	280	GLU	2.0

## 6.2 Non-standard residues in protein, DNA, RNA chains [i](#)

There are no non-standard protein/DNA/RNA residues in this entry.

## 6.3 Carbohydrates [i](#)

There are no monosaccharides in this entry.

## 6.4 Ligands [i](#)

In the following table, the Atoms column lists the number of modelled atoms in the group and the number defined in the chemical component dictionary. The B-factors column lists the minimum, median, 95<sup>th</sup> percentile and maximum values of B factors of atoms in the group. The column labelled 'Q< 0.9' lists the number of atoms with occupancy less than 0.9.

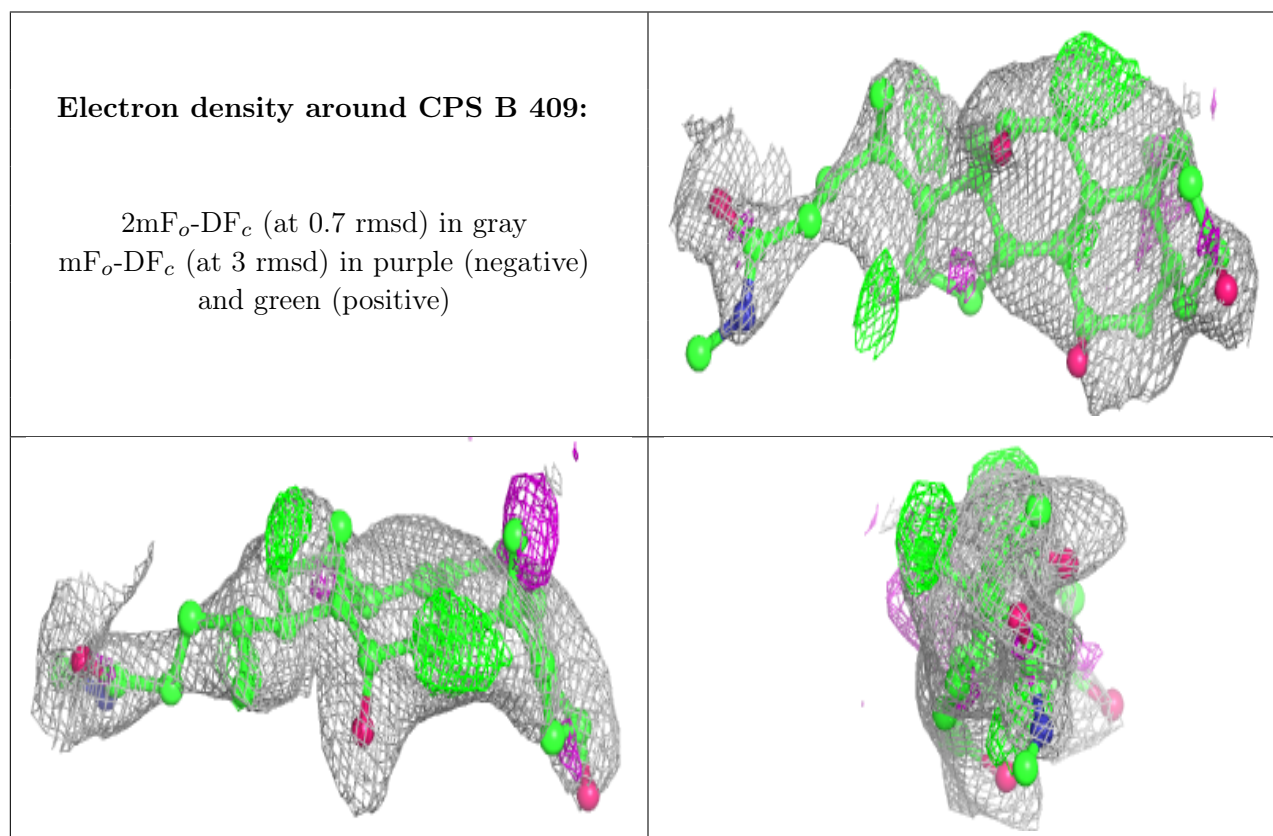
Mol	Type	Chain	Res	Atoms	RSCC	RSR	B-factors(Å <sup>2</sup> )	Q<0.9
3	CPS	B	409	30/42	0.65	0.29	66,67,70,72	0
3	CPS	B	407	22/42	0.77	0.20	61,63,68,71	0
4	EDO	A	409	4/4	0.77	0.25	48,49,49,52	0
4	EDO	B	410	4/4	0.78	0.26	43,43,43,47	0
3	CPS	A	408	36/42	0.80	0.18	67,76,80,81	0
3	CPS	A	402	42/42	0.81	0.19	46,50,100,101	0
3	CPS	B	404	29/42	0.81	0.20	60,61,68,69	0
3	CPS	A	404	29/42	0.81	0.22	68,70,75,75	0
3	CPS	B	402	29/42	0.82	0.15	59,61,64,64	0
3	CPS	B	406	29/42	0.82	0.17	56,60,71,73	0

*Continued on next page...*

Continued from previous page...

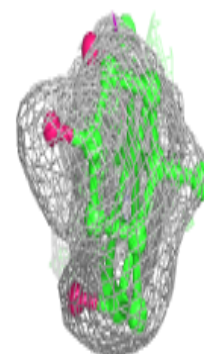
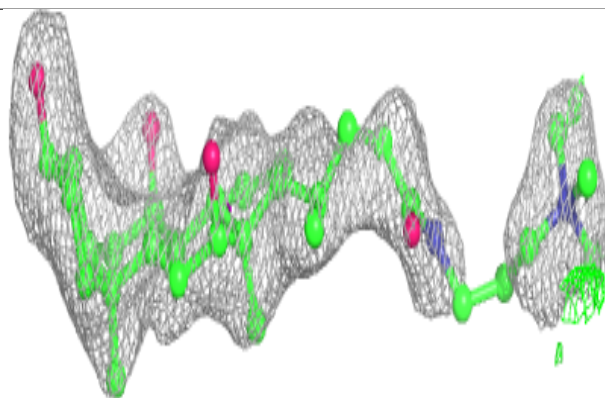
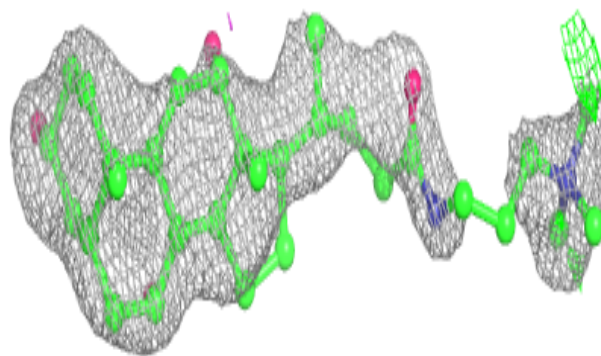
Mol	Type	Chain	Res	Atoms	RSCC	RSR	B-factors( $\text{\AA}^2$ )	Q<0.9
3	CPS	B	405	30/42	0.83	0.15	47,49,52,54	0
3	CPS	A	407	42/42	0.83	0.23	70,77,112,112	0
3	CPS	B	408	27/42	0.86	0.16	61,63,64,66	0
3	CPS	A	403	26/42	0.87	0.19	49,52,57,58	0
3	CPS	A	406	29/42	0.88	0.18	41,42,45,47	0
3	CPS	A	405	23/42	0.88	0.18	69,71,72,73	0
2	RIT	B	401[B]	50/50	0.89	0.18	36,41,51,53	50
2	RIT	A	401	50/50	0.89	0.14	35,44,57,60	0
2	RIT	B	401[A]	50/50	0.89	0.18	38,43,53,55	50
3	CPS	B	403	36/42	0.89	0.14	50,52,55,56	0

The following is a graphical depiction of the model fit to experimental electron density of all instances of the Ligand of Interest. In addition, ligands with molecular weight > 250 and outliers as shown on the geometry validation Tables will also be included. Each fit is shown from different orientation to approximate a three-dimensional view.

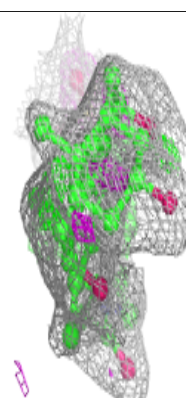
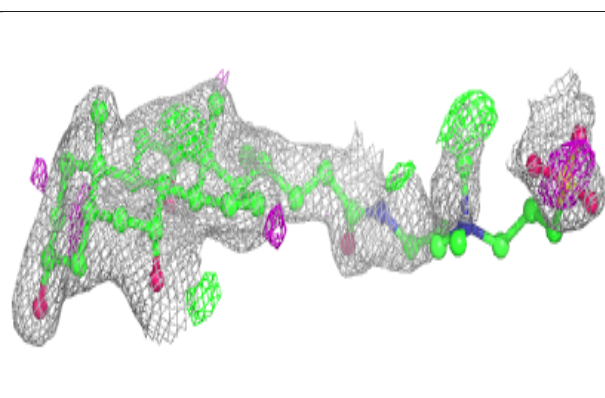
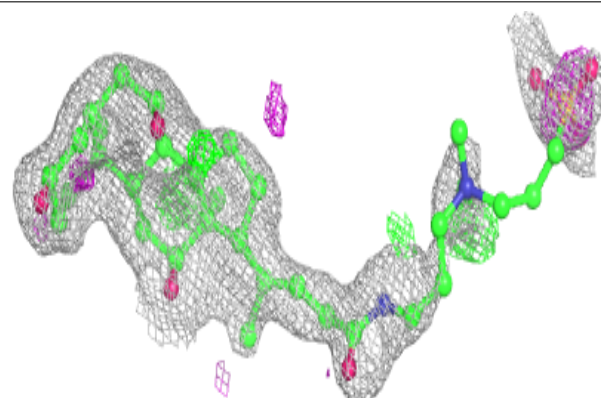


**Electron density around CPS A 408:**

$2mF_o-DF_c$  (at 0.7 rmsd) in gray  
 $mF_o-DF_c$  (at 3 rmsd) in purple (negative)  
and green (positive)

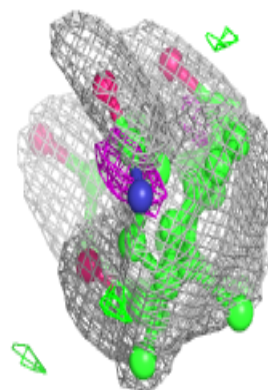
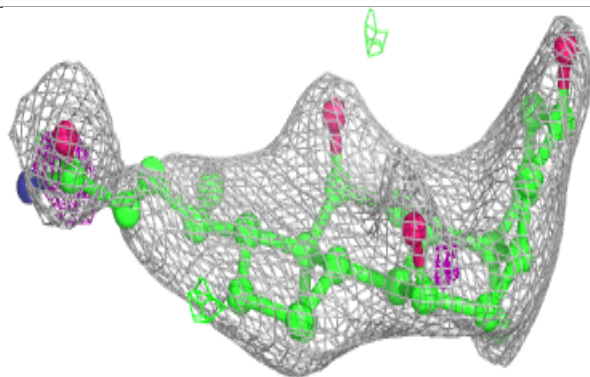
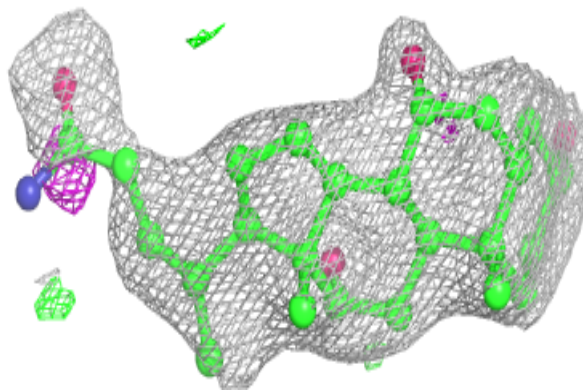
**Electron density around CPS A 402:**

$2mF_o-DF_c$  (at 0.7 rmsd) in gray  
 $mF_o-DF_c$  (at 3 rmsd) in purple (negative)  
and green (positive)

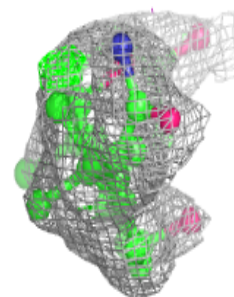
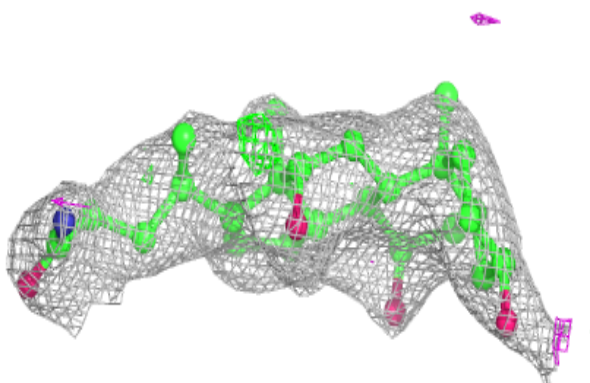
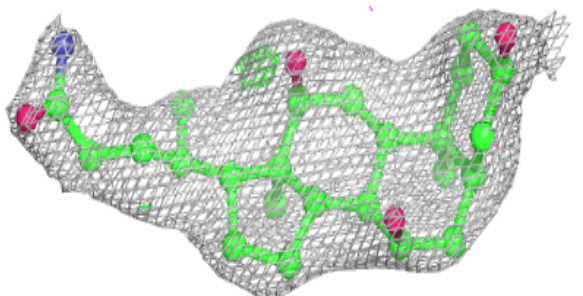


**Electron density around CPS B 404:**

$2mF_o-DF_c$  (at 0.7 rmsd) in gray  
 $mF_o-DF_c$  (at 3 rmsd) in purple (negative)  
and green (positive)

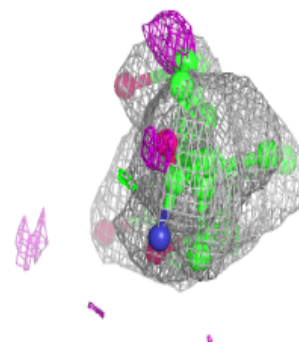
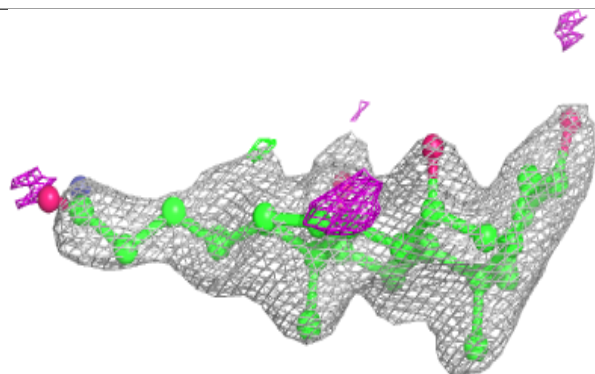
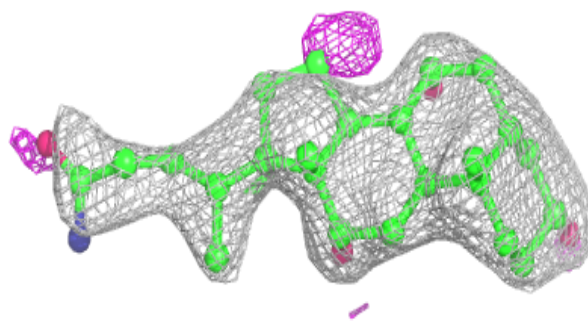
**Electron density around CPS B 402:**

$2mF_o-DF_c$  (at 0.7 rmsd) in gray  
 $mF_o-DF_c$  (at 3 rmsd) in purple (negative)  
and green (positive)

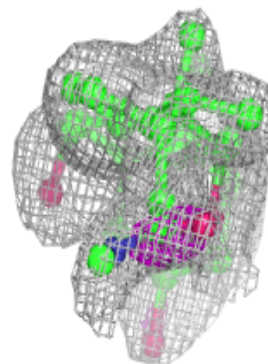
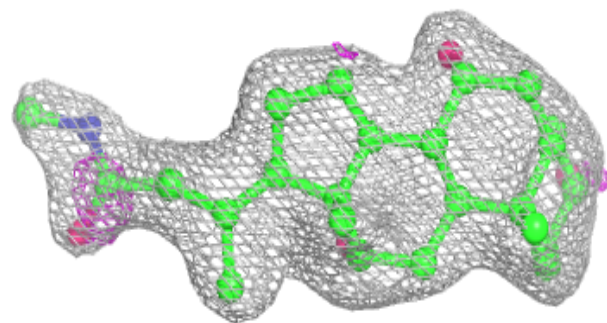
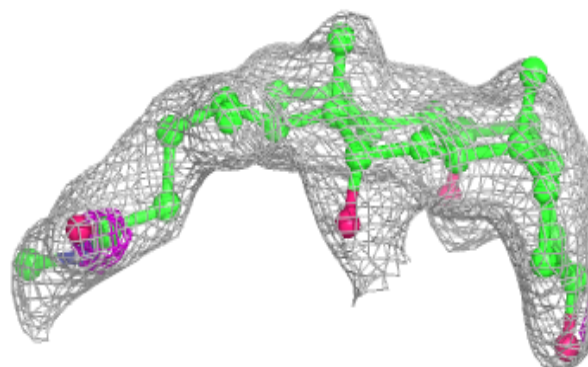


**Electron density around CPS B 406:**

$2mF_o-DF_c$  (at 0.7 rmsd) in gray  
 $mF_o-DF_c$  (at 3 rmsd) in purple (negative)  
and green (positive)

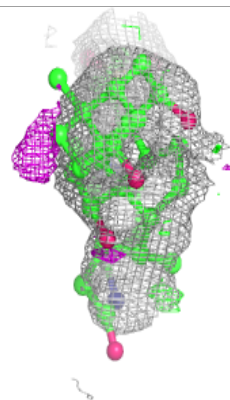
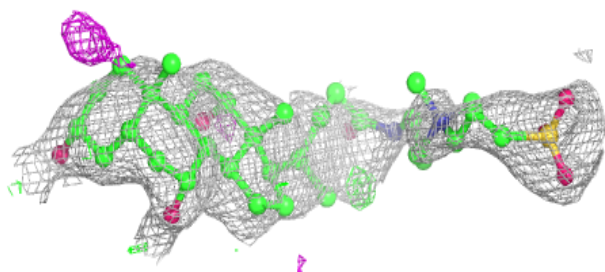
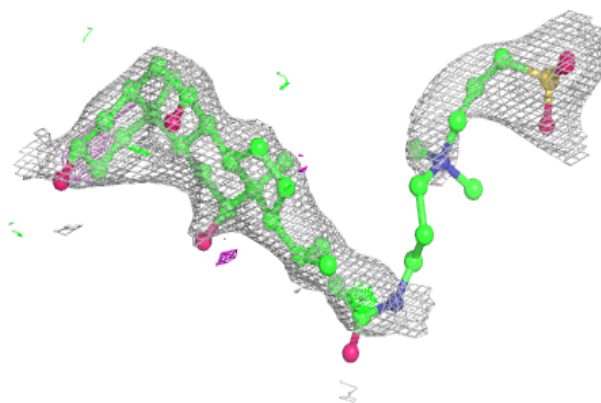
**Electron density around CPS B 405:**

$2mF_o-DF_c$  (at 0.7 rmsd) in gray  
 $mF_o-DF_c$  (at 3 rmsd) in purple (negative)  
and green (positive)

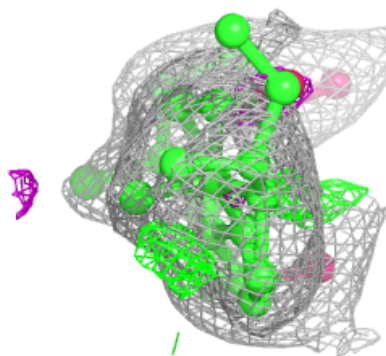
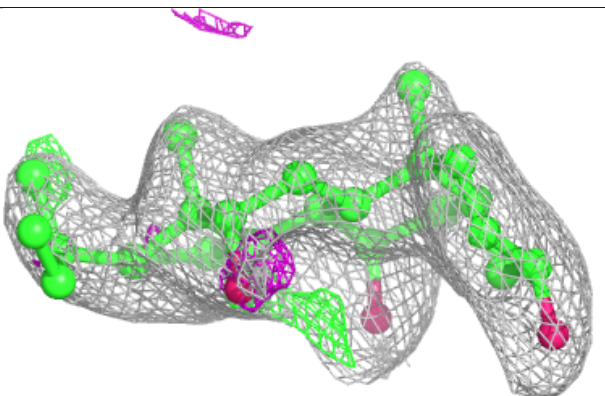
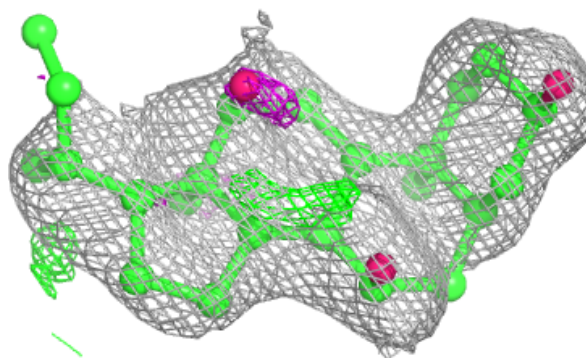


**Electron density around CPS A 407:**

$2mF_o-DF_c$  (at 0.7 rmsd) in gray  
 $mF_o-DF_c$  (at 3 rmsd) in purple (negative)  
and green (positive)

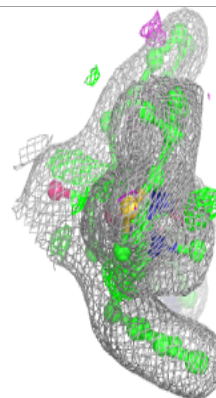
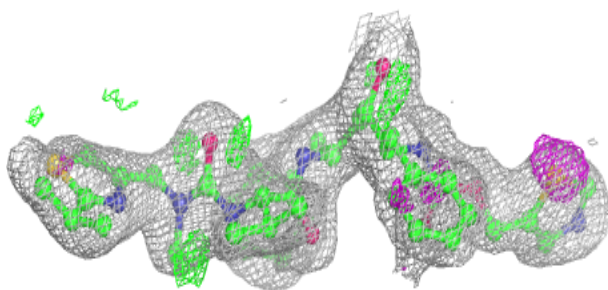
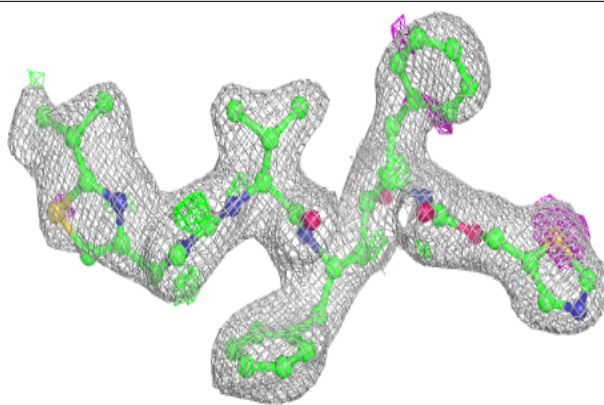
**Electron density around CPS A 403:**

$2mF_o-DF_c$  (at 0.7 rmsd) in gray  
 $mF_o-DF_c$  (at 3 rmsd) in purple (negative)  
and green (positive)

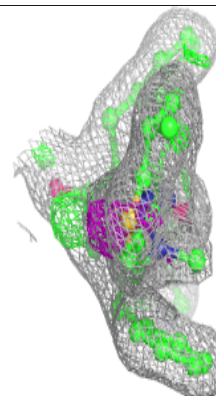
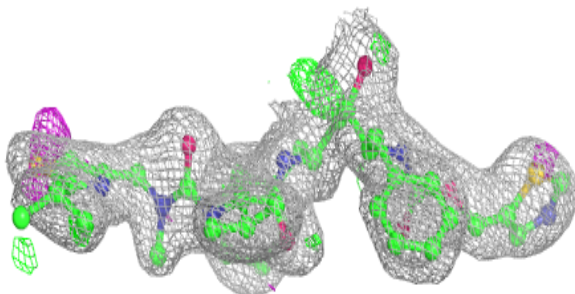
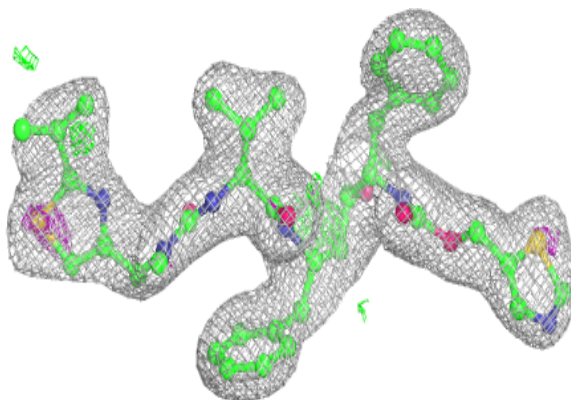


**Electron density around RIT B 401 (B):**

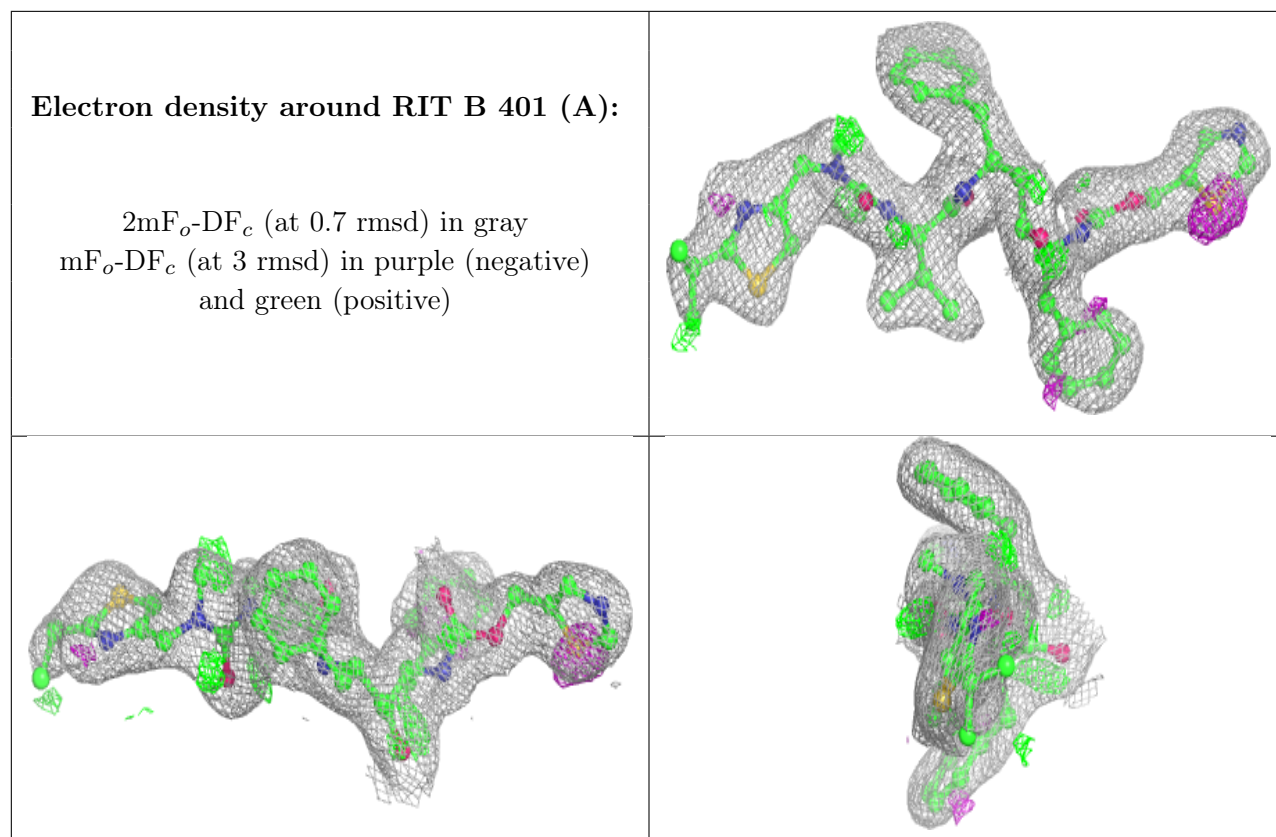
$2mF_o-DF_c$  (at 0.7 rmsd) in gray  
 $mF_o-DF_c$  (at 3 rmsd) in purple (negative)  
and green (positive)

**Electron density around RIT A 401:**

$2mF_o-DF_c$  (at 0.7 rmsd) in gray  
 $mF_o-DF_c$  (at 3 rmsd) in purple (negative)  
and green (positive)







## 6.5 Other polymers [i](#)

There are no such residues in this entry.