



Full wwPDB X-ray Structure Validation Report ⓘ

Oct 4, 2023 – 10:27 PM EDT

PDB ID : 6VF9
Title : DNA Polymerase Mu, 8-oxoGTP:Ct Ternary Complex, 50 mM Mg²⁺ (2160 min)
Authors : Jamsen, J.A.; Wilson, S.H.
Deposited on : 2020-01-03
Resolution : 1.56 Å (reported)

This is a Full wwPDB X-ray Structure Validation Report for a publicly released PDB entry.

We welcome your comments at validation@mail.wwpdb.org

A user guide is available at

<https://www.wwpdb.org/validation/2017/XrayValidationReportHelp>

with specific help available everywhere you see the ⓘ symbol.

The types of validation reports are described at

<http://www.wwpdb.org/validation/2017/FAQs#types>.

The following versions of software and data (see [references ⓘ](#)) were used in the production of this report:

MolProbity : **FAILED**
Mogul : 1.8.5 (274361), CSD as541be (2020)
Xtrriage (Phenix) : 1.13
EDS : **FAILED**
Percentile statistics : 20191225.v01 (using entries in the PDB archive December 25th 2019)
Ideal geometry (proteins) : Engh & Huber (2001)
Ideal geometry (DNA, RNA) : Parkinson et al. (1996)
Validation Pipeline (wwPDB-VP) : 2.35.1

1 Overall quality at a glance

The following experimental techniques were used to determine the structure:

X-RAY DIFFRACTION

The reported resolution of this entry is 1.56 Å.

There are no overall percentile quality scores available for this entry.

MolProbity and EDS failed to run properly - the sequence quality summary graphics cannot be shown.

2 Entry composition i

There are 11 unique types of molecules in this entry. The entry contains 3395 atoms, of which 0 are hydrogens and 0 are deuteriums.

In the tables below, the ZeroOcc column contains the number of atoms modelled with zero occupancy, the AltConf column contains the number of residues with at least one atom in alternate conformation and the Trace column contains the number of residues modelled with at most 2 atoms.

- Molecule 1 is a protein called DNA-directed DNA/RNA polymerase mu.

Mol	Chain	Residues	Atoms					ZeroOcc	AltConf	Trace
			Total	C	N	O	S			
1	A	326	2671	1699	486	476	10	0	18	0

There are 18 discrepancies between the modelled and reference sequences:

Chain	Residue	Modelled	Actual	Comment	Reference
A	127	GLY	-	expression tag	UNP Q9NP87
A	128	SER	-	expression tag	UNP Q9NP87
A	129	ALA	-	expression tag	UNP Q9NP87
A	130	ALA	-	expression tag	UNP Q9NP87
A	131	ALA	-	expression tag	UNP Q9NP87
A	?	-	PRO	deletion	UNP Q9NP87
A	?	-	GLY	deletion	UNP Q9NP87
A	?	-	ALA	deletion	UNP Q9NP87
A	?	-	ALA	deletion	UNP Q9NP87
A	?	-	VAL	deletion	UNP Q9NP87
A	?	-	GLY	deletion	UNP Q9NP87
A	?	-	GLY	deletion	UNP Q9NP87
A	?	-	SER	deletion	UNP Q9NP87
A	?	-	THR	deletion	UNP Q9NP87
A	?	-	ARG	deletion	UNP Q9NP87
A	?	-	PRO	deletion	UNP Q9NP87
A	?	-	CYS	deletion	UNP Q9NP87
A	410	GLY	PRO	conflict	UNP Q9NP87

- Molecule 2 is a DNA chain called DNA (5'-D(*CP*GP*GP*CP*CP*TP*AP*CP*G)-3').

Mol	Chain	Residues	Atoms					ZeroOcc	AltConf	Trace
			Total	C	N	O	P			
2	T	9	180	86	34	52	8	0	0	0

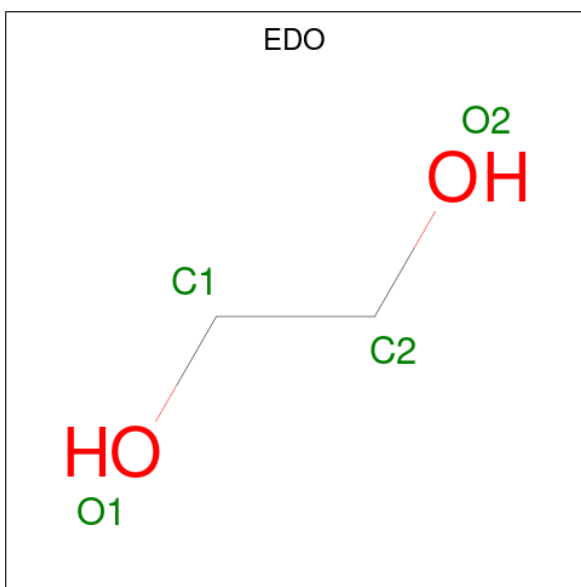
- Molecule 3 is a DNA chain called DNA (5'-D(*CP*GP*TP*A)-3').

Mol	Chain	Residues	Atoms				ZeroOcc	AltConf	Trace	
			Total	C	N	O				P
3	P	4	79	39	15	22	3	0	0	0

- Molecule 4 is a DNA chain called DNA (5'-D(P*GP*CP*CP*G)-3').

Mol	Chain	Residues	Atoms				ZeroOcc	AltConf	Trace	
			Total	C	N	O				P
4	D	4	83	38	16	25	4	0	0	0

- Molecule 5 is 1,2-ETHANEDIOL (three-letter code: EDO) (formula: C₂H₆O₂).



Mol	Chain	Residues	Atoms		ZeroOcc	AltConf
			Total	O		
5	A	1	4	2	0	0
5	A	1	4	2	0	0
5	A	1	4	2	0	0
5	A	1	3	2	0	0

- Molecule 6 is MAGNESIUM ION (three-letter code: MG) (formula: Mg) (labeled as "Ligand of Interest" by depositor).

Mol	Chain	Residues	Atoms	ZeroOcc	AltConf
			Total		
6	A	1	1	0	0

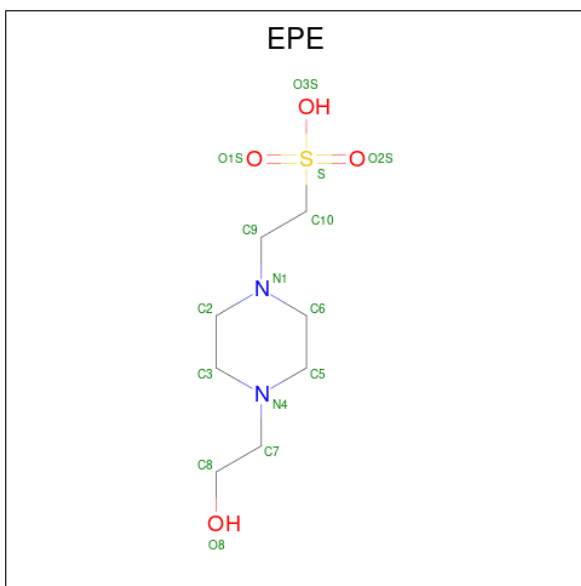
- Molecule 7 is SODIUM ION (three-letter code: NA) (formula: Na) (labeled as "Ligand of Interest" by depositor).

Mol	Chain	Residues	Atoms			ZeroOcc	AltConf
7	A	2	Total	Na		0	0
			2	2			

- Molecule 8 is CHLORIDE ION (three-letter code: CL) (formula: Cl).

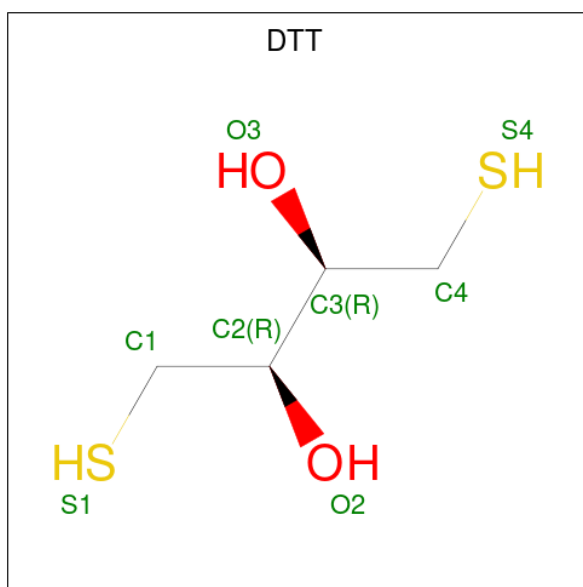
Mol	Chain	Residues	Atoms			ZeroOcc	AltConf
8	A	1	Total	Cl		0	1
			1	1			

- Molecule 9 is 4-(2-HYDROXYETHYL)-1-PIPERAZINE ETHANESULFONIC ACID (three-letter code: EPE) (formula: C₈H₁₈N₂O₄S).



Mol	Chain	Residues	Atoms				ZeroOcc	AltConf
9	A	1	Total	C	O	S	0	0
			5	1	3	1		

- Molecule 10 is 2,3-DIHYDROXY-1,4-DITHIOBUTANE (three-letter code: DTT) (formula: C₄H₁₀O₂S₂).



Mol	Chain	Residues	Atoms	ZeroOcc	AltConf
10	A	1	Total S 2 2	0	1

- Molecule 11 is water.

Mol	Chain	Residues	Atoms	ZeroOcc	AltConf
11	A	277	Total O 281 281	0	15
11	T	41	Total O 41 41	0	0
11	P	15	Total O 15 15	0	0
11	D	19	Total O 19 19	0	1

MolProbity and EDS failed to run properly - this section is therefore empty.

3 Data and refinement statistics i

EDS failed to run properly - this section is therefore incomplete.

Property	Value	Source
Space group	P 21 21 21	Depositor
Cell constants a, b, c, α , β , γ	60.20Å 62.13Å 118.53Å 90.00° 90.00° 90.00°	Depositor
Resolution (Å)	34.93 – 1.56	Depositor
% Data completeness (in resolution range)	99.0 (34.93-1.56)	Depositor
R_{merge}	0.08	Depositor
R_{sym}	(Not available)	Depositor
$\langle I/\sigma(I) \rangle$ ¹	2.04 (at 1.56Å)	Xtrriage
Refinement program	PHENIX 1.15.2_3472	Depositor
R, R_{free}	0.165 , 0.182	Depositor
Wilson B-factor (Å ²)	21.0	Xtrriage
Anisotropy	0.127	Xtrriage
L-test for twinning ²	$\langle L \rangle = 0.49$, $\langle L^2 \rangle = 0.33$	Xtrriage
Estimated twinning fraction	0.017 for k,h,-l	Xtrriage
Total number of atoms	3395	wwPDB-VP
Average B, all atoms (Å ²)	26.0	wwPDB-VP

Xtrriage's analysis on translational NCS is as follows: *The largest off-origin peak in the Patterson function is 5.90% of the height of the origin peak. No significant pseudotranslation is detected.*

¹Intensities estimated from amplitudes.

²Theoretical values of $\langle |L| \rangle$, $\langle L^2 \rangle$ for acentric reflections are 0.5, 0.333 respectively for untwinned datasets, and 0.375, 0.2 for perfectly twinned datasets.

4 Model quality [i](#)

4.1 Standard geometry [i](#)

MolProbity failed to run properly - this section is therefore empty.

4.2 Too-close contacts [i](#)

MolProbity failed to run properly - this section is therefore empty.

4.3 Torsion angles [i](#)

4.3.1 Protein backbone [i](#)

MolProbity failed to run properly - this section is therefore empty.

4.3.2 Protein sidechains [i](#)

MolProbity failed to run properly - this section is therefore empty.

4.3.3 RNA [i](#)

MolProbity failed to run properly - this section is therefore empty.

4.4 Non-standard residues in protein, DNA, RNA chains [i](#)

There are no non-standard protein/DNA/RNA residues in this entry.

4.5 Carbohydrates [i](#)

There are no monosaccharides in this entry.

4.6 Ligand geometry [i](#)

Of 11 ligands modelled in this entry, 4 are monoatomic and 2 are modelled with single atom - leaving 5 for Mogul analysis.

In the following table, the Counts columns list the number of bonds (or angles) for which Mogul statistics could be retrieved, the number of bonds (or angles) that are observed in the model and the number of bonds (or angles) that are defined in the Chemical Component Dictionary. The

Link column lists molecule types, if any, to which the group is linked. The Z score for a bond length (or angle) is the number of standard deviations the observed value is removed from the expected value. A bond length (or angle) with $|Z| > 2$ is considered an outlier worth inspection. RMSZ is the root-mean-square of all Z scores of the bond lengths (or angles).

Mol	Type	Chain	Res	Link	Bond lengths			Bond angles		
					Counts	RMSZ	# Z > 2	Counts	RMSZ	# Z > 2
5	EDO	A	501	-	3,3,3	0.41	0	2,2,2	0.54	0
5	EDO	A	502	-	3,3,3	0.46	0	2,2,2	0.37	0
5	EDO	A	504	-	2,2,3	0.36	0	1,1,2	0.54	0
9	EPE	A	509	-	4,4,15	0.94	0	5,6,20	1.61	1 (20%)
5	EDO	A	503	-	3,3,3	0.47	0	2,2,2	0.23	0

In the following table, the Chirals column lists the number of chiral outliers, the number of chiral centers analysed, the number of these observed in the model and the number defined in the Chemical Component Dictionary. Similar counts are reported in the Torsion and Rings columns. '-' means no outliers of that kind were identified.

Mol	Type	Chain	Res	Link	Chirals	Torsions	Rings
5	EDO	A	501	-	-	0/1/1/1	-
5	EDO	A	503	-	-	1/1/1/1	-
5	EDO	A	502	-	-	1/1/1/1	-

There are no bond length outliers.

All (1) bond angle outliers are listed below:

Mol	Chain	Res	Type	Atoms	Z	Observed($^{\circ}$)	Ideal($^{\circ}$)
9	A	509	EPE	O2S-S-O1S	-3.49	108.60	118.02

There are no chirality outliers.

All (2) torsion outliers are listed below:

Mol	Chain	Res	Type	Atoms
5	A	503	EDO	O1-C1-C2-O2
5	A	502	EDO	O1-C1-C2-O2

There are no ring outliers.

No monomer is involved in short contacts.

4.7 Other polymers

There are no such residues in this entry.

4.8 Polymer linkage issues

There are no chain breaks in this entry.

5 Fit of model and data

5.1 Protein, DNA and RNA chains

EDS failed to run properly - this section is therefore empty.

5.2 Non-standard residues in protein, DNA, RNA chains

EDS failed to run properly - this section is therefore empty.

5.3 Carbohydrates

EDS failed to run properly - this section is therefore empty.

5.4 Ligands

EDS failed to run properly - this section is therefore empty.

5.5 Other polymers

EDS failed to run properly - this section is therefore empty.