



Full wwPDB X-ray Structure Validation Report ⓘ

Oct 28, 2024 – 09:11 am GMT

PDB ID : 2VHA
Title : DEBP
Authors : Hu, Y.L.; Fan, C.-P.; Fu, G.S.; Zhu, D.Y.; Jin, Q.; Wang, D.-C.
Deposited on : 2007-11-20
Resolution : 1.00 Å(reported)

This is a Full wwPDB X-ray Structure Validation Report for a publicly released PDB entry.

We welcome your comments at validation@mail.wwpdb.org

A user guide is available at

<https://www.wwpdb.org/validation/2017/XrayValidationReportHelp>

with specific help available everywhere you see the ⓘ symbol.

The types of validation reports are described at

<http://www.wwpdb.org/validation/2017/FAQs#types>.

The following versions of software and data (see [references ⓘ](#)) were used in the production of this report:

MolProbity : 4.02b-467
Mogul : 1.8.4, CSD as541be (2020)
Xtriage (Phenix) : 1.13
EDS : 3.0
Percentile statistics : 20231227.v01 (using entries in the PDB archive December 27th 2023)
CCP4 : 9.0.003 (Gargrove)
Density-Fitness : 1.0.11
Ideal geometry (proteins) : Engh & Huber (2001)
Ideal geometry (DNA, RNA) : Parkinson et al. (1996)
Validation Pipeline (wwPDB-VP) : 2.39

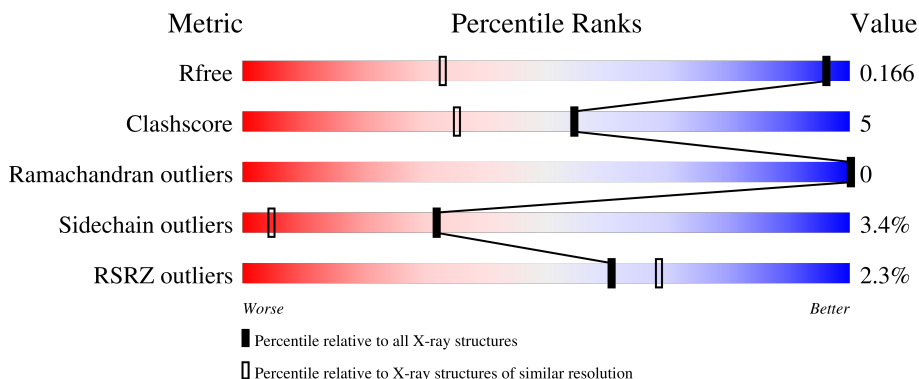
1 Overall quality at a glance

The following experimental techniques were used to determine the structure:

X-RAY DIFFRACTION


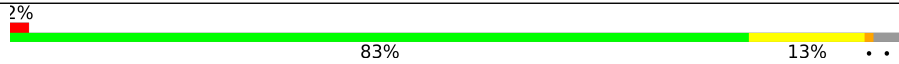
The reported resolution of this entry is 1.00 Å.

Percentile scores (ranging between 0-100) for global validation metrics of the entry are shown in the following graphic. The table shows the number of entries on which the scores are based.



Metric	Whole archive (#Entries)	Similar resolution (#Entries, resolution range(Å))
R_{free}	164625	1205 (1.04-0.96)
Clashscore	180529	1363 (1.04-0.96)
Ramachandran outliers	177936	1301 (1.04-0.96)
Sidechain outliers	177891	1302 (1.04-0.96)
RSRZ outliers	164620	1203 (1.04-0.96)

The table below summarises the geometric issues observed across the polymeric chains and their fit to the electron density. The red, orange, yellow and green segments of the lower bar indicate the fraction of residues that contain outliers for ≥ 3 , 2, 1 and 0 types of geometric quality criteria respectively. A grey segment represents the fraction of residues that are not modelled. The numeric value for each fraction is indicated below the corresponding segment, with a dot representing fractions $\leq 5\%$. The upper red bar (where present) indicates the fraction of residues that have poor fit to the electron density. The numeric value is given above the bar.

Mol	Chain	Length	Quality of chain
1	A	287	 2% 84% 11% ..
1	B	287	 2% 83% 13% ..

2 Entry composition [i](#)

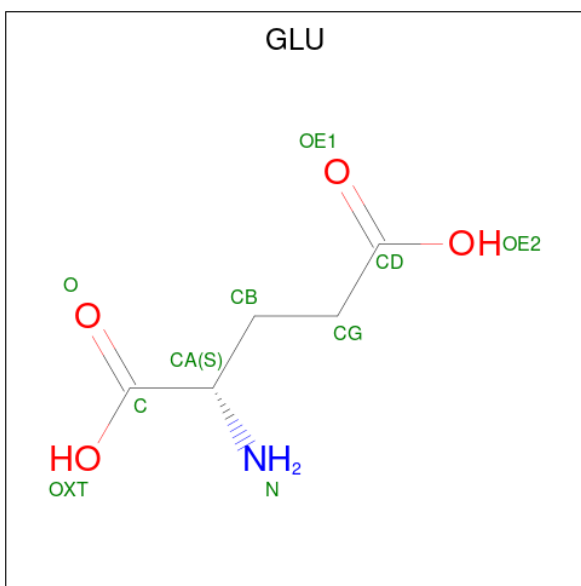
There are 4 unique types of molecules in this entry. The entry contains 5227 atoms, of which 0 are hydrogens and 0 are deuteriums.

In the tables below, the ZeroOcc column contains the number of atoms modelled with zero occupancy, the AltConf column contains the number of residues with at least one atom in alternate conformation and the Trace column contains the number of residues modelled with at most 2 atoms.

- Molecule 1 is a protein called PERIPLASMIC BINDING TRANSPORT PROTEIN.

Mol	Chain	Residues	Atoms					ZeroOcc	AltConf	Trace
			Total	C	N	O	S			
1	A	277	Total 2215	C 1393	N 384	O 428	S 10	0	20	1
1	B	277	Total 2246	C 1413	N 385	O 436	S 12	0	25	1

- Molecule 2 is GLUTAMIC ACID (three-letter code: GLU) (formula: C₅H₉NO₄).



Mol	Chain	Residues	Atoms				ZeroOcc	AltConf
			Total	C	N	O		
2	A	1	Total 10	C 5	N 1	O 4	0	0
2	B	1	Total 10	C 5	N 1	O 4	0	0

- Molecule 3 is 2-AMINO-2-HYDROXYMETHYL-PROPANE-1,3-DIOL (three-letter code: TRS) (formula: C₄H₁₂NO₃).



Mol	Chain	Residues	Atoms				ZeroOcc	AltConf
			Total	C	N	O		
3	A	1	8	4	1	3	0	0
3	B	1	8	4	1	3	0	0

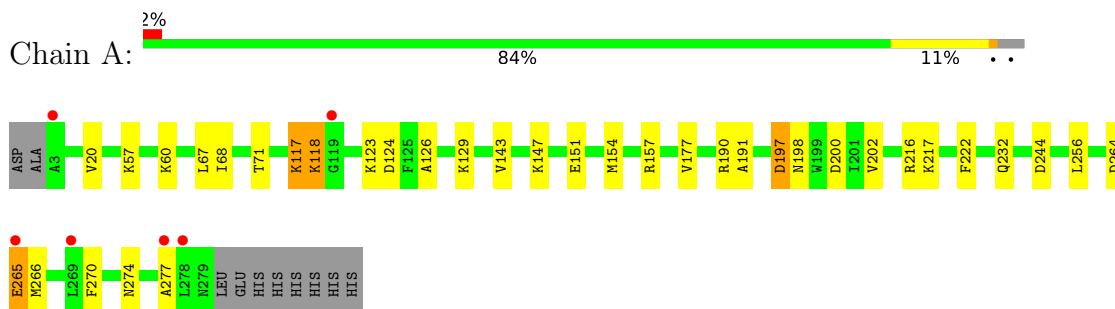
- Molecule 4 is water.

Mol	Chain	Residues	Atoms		ZeroOcc	AltConf
			Total	O		
4	A	370	370	370	0	0
4	B	360	360	360	0	0

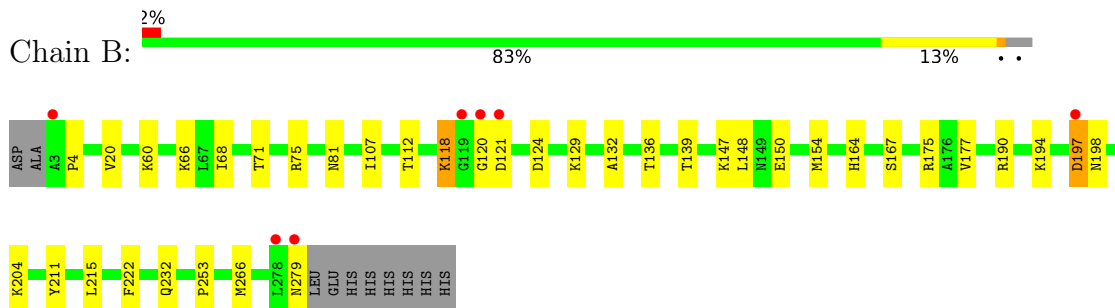
3 Residue-property plots [i](#)

These plots are drawn for all protein, RNA, DNA and oligosaccharide chains in the entry. The first graphic for a chain summarises the proportions of the various outlier classes displayed in the second graphic. The second graphic shows the sequence view annotated by issues in geometry and electron density. Residues are color-coded according to the number of geometric quality criteria for which they contain at least one outlier: green = 0, yellow = 1, orange = 2 and red = 3 or more. A red dot above a residue indicates a poor fit to the electron density ($RSRZ > 2$). Stretches of 2 or more consecutive residues without any outlier are shown as a green connector. Residues present in the sample, but not in the model, are shown in grey.

- Molecule 1: PERIPLASMIC BINDING TRANSPORT PROTEIN



- Molecule 1: PERIPLASMIC BINDING TRANSPORT PROTEIN



4 Data and refinement statistics

Property	Value	Source
Space group	P 1 21 1	Depositor
Cell constants a, b, c, α , β , γ	48.41Å 68.18Å 80.21Å 90.00° 98.78° 90.00°	Depositor
Resolution (Å)	10.00 – 1.00 10.00 – 1.00	Depositor EDS
% Data completeness (in resolution range)	87.2 (10.00-1.00) 87.7 (10.00-1.00)	Depositor EDS
R_{merge}	0.05	Depositor
R_{sym}	(Not available)	Depositor
$\langle I/\sigma(I) \rangle$ ¹	2.71 (at 1.00Å)	Xtrriage
Refinement program	SHELXL-97	Depositor
R, R_{free}	0.136 , 0.169 0.139 , 0.166	Depositor DCC
R_{free} test set	12708 reflections (4.98%)	wwPDB-VP
Wilson B-factor (Å ²)	7.6	Xtrriage
Anisotropy	0.193	Xtrriage
Bulk solvent k_{sol} (e/Å ³), B_{sol} (Å ²)	0.42 , 60.2	EDS
L-test for twinning ²	$\langle L \rangle = 0.49$, $\langle L^2 \rangle = 0.32$	Xtrriage
Estimated twinning fraction	No twinning to report.	Xtrriage
F_o, F_c correlation	0.98	EDS
Total number of atoms	5227	wwPDB-VP
Average B, all atoms (Å ²)	14.0	wwPDB-VP

Xtrriage's analysis on translational NCS is as follows: *The analyses of the Patterson function reveals a significant off-origin peak that is 72.45 % of the origin peak, indicating pseudo-translational symmetry. The chance of finding a peak of this or larger height randomly in a structure without pseudo-translational symmetry is equal to 2.1966e-06. The detected translational NCS is most likely also responsible for the elevated intensity ratio.*

¹Intensities estimated from amplitudes.

²Theoretical values of $\langle |L| \rangle$, $\langle L^2 \rangle$ for acentric reflections are 0.5, 0.333 respectively for untwinned datasets, and 0.375, 0.2 for perfectly twinned datasets.

5 Model quality [i](#)

5.1 Standard geometry [i](#)

Bond lengths and bond angles in the following residue types are not validated in this section: TRS

The Z score for a bond length (or angle) is the number of standard deviations the observed value is removed from the expected value. A bond length (or angle) with $|Z| > 5$ is considered an outlier worth inspection. RMSZ is the root-mean-square of all Z scores of the bond lengths (or angles).

Mol	Chain	Bond lengths		Bond angles	
		RMSZ	# Z >5	RMSZ	# Z >5
1	A	0.75	0/2351	1.28	18/3162 (0.6%)
1	B	0.76	0/2390	1.19	13/3215 (0.4%)
All	All	0.75	0/4741	1.24	31/6377 (0.5%)

There are no bond length outliers.

All (31) bond angle outliers are listed below:

Mol	Chain	Res	Type	Atoms	Z	Observed(°)	Ideal(°)
1	A	124	ASP	CB-CG-OD1	20.04	136.33	118.30
1	A	124	ASP	CB-CG-OD2	-19.16	101.06	118.30
1	B	124	ASP	CB-CG-OD2	-12.30	107.23	118.30
1	B	121	ASP	CB-CG-OD1	10.30	127.57	118.30
1	A	157	ARG	NE-CZ-NH2	-8.46	116.07	120.30
1	A	197	ASP	CB-CG-OD1	-8.01	111.09	118.30
1	A	216	ARG	NE-CZ-NH1	7.66	124.13	120.30
1	A	216	ARG	NE-CZ-NH2	-7.65	116.48	120.30
1	A	270	PHE	CB-CG-CD1	-7.58	115.49	120.80
1	B	124	ASP	CB-CG-OD1	7.54	125.09	118.30
1	A	190	ARG	NE-CZ-NH1	7.04	123.82	120.30
1	B	197[A]	ASP	CB-CG-OD2	-6.85	112.14	118.30
1	B	197[B]	ASP	CB-CG-OD2	-6.85	112.14	118.30
1	B	120	GLY	CA-C-O	6.70	132.65	120.60
1	B	175	ARG	NE-CZ-NH2	6.67	123.64	120.30
1	B	75	ARG	NE-CZ-NH2	-6.64	116.98	120.30
1	A	190	ARG	NE-CZ-NH2	-6.42	117.09	120.30
1	A	151	GLU	OE1-CD-OE2	-6.23	115.83	123.30
1	A	264	ASP	CB-CG-OD1	5.96	123.67	118.30
1	B	190	ARG	NE-CZ-NH2	-5.80	117.40	120.30
1	A	118	LYS	C-N-CA	5.79	134.46	122.30
1	A	277	ALA	C-N-CA	-5.68	107.51	121.70

Continued on next page...

Continued from previous page...

Mol	Chain	Res	Type	Atoms	Z	Observed(°)	Ideal(°)
1	A	244	ASP	CB-CG-OD2	-5.57	113.29	118.30
1	A	124	ASP	N-CA-CB	5.56	120.60	110.60
1	B	211	TYR	CB-CG-CD1	5.54	124.33	121.00
1	A	222	PHE	CB-CG-CD1	-5.41	117.02	120.80
1	B	222	PHE	CB-CG-CD2	5.30	124.51	120.80
1	A	264	ASP	CB-CG-OD2	-5.18	113.64	118.30
1	B	75	ARG	NE-CZ-NH1	5.18	122.89	120.30
1	A	197	ASP	CB-CG-OD2	5.10	122.89	118.30
1	B	120	GLY	O-C-N	-5.03	114.64	122.70

There are no chirality outliers.

There are no planarity outliers.

5.2 Too-close contacts

In the following table, the Non-H and H(model) columns list the number of non-hydrogen atoms and hydrogen atoms in the chain respectively. The H(added) column lists the number of hydrogen atoms added and optimized by MolProbity. The Clashes column lists the number of clashes within the asymmetric unit, whereas Symm-Clashes lists symmetry-related clashes.

Mol	Chain	Non-H	H(model)	H(added)	Clashes	Symm-Clashes
1	A	2215	0	2228	21	0
1	B	2246	0	2258	22	0
2	A	10	0	5	0	0
2	B	10	0	5	0	0
3	A	8	0	12	0	0
3	B	8	0	12	0	0
4	A	370	0	0	12	0
4	B	360	0	0	11	0
All	All	5227	0	4520	43	0

The all-atom clashscore is defined as the number of clashes found per 1000 atoms (including hydrogen atoms). The all-atom clashscore for this structure is 5.

All (43) close contacts within the same asymmetric unit are listed below, sorted by their clash magnitude.

Atom-1	Atom-2	Interatomic distance (Å)	Clash overlap (Å)
1:A:71[B]:THR:HG21	4:A:2139:HOH:O	1.79	0.81
1:B:71[B]:THR:HG21	4:B:2125:HOH:O	1.82	0.78
1:A:60:LYS:HE2	4:A:2118:HOH:O	1.85	0.76

Continued on next page...

Continued from previous page...

Atom-1	Atom-2	Interatomic distance (Å)	Clash overlap (Å)
1:B:136[B]:THR:HG21	1:B:164:HIS:ND1	2.04	0.73
1:A:191:ALA:O	1:A:256:LEU:HD12	1.89	0.72
1:A:57:LYS:HD3	4:A:2051:HOH:O	1.89	0.70
1:A:129[B]:LYS:NZ	1:A:154:MET:HG2	2.07	0.70
1:B:279:ASN:N	4:B:2359:HOH:O	2.29	0.66
1:A:60:LYS:HE3	4:A:2018:HOH:O	1.96	0.64
1:A:202:VAL:HG11	4:A:2201:HOH:O	1.98	0.64
1:B:232[B]:GLN:HG2	4:B:2304:HOH:O	2.00	0.61
1:B:147:LYS:HD2	4:B:2212:HOH:O	2.00	0.60
1:A:118:LYS:HG3	1:A:200:ASP:OD2	2.02	0.59
1:B:136[B]:THR:OG1	1:B:139:THR:HG21	2.03	0.59
1:A:123:LYS:HD3	4:A:2201:HOH:O	2.02	0.59
1:B:107:ILE:O	1:B:266[B]:MET:HE3	2.04	0.57
1:A:143:VAL:HG22	4:A:2107:HOH:O	2.06	0.55
1:B:136[B]:THR:HG22	1:B:167:SER:OG	2.07	0.54
1:B:66[B]:LYS:HE2	4:B:2117:HOH:O	2.07	0.53
1:A:265:GLU:HG2	1:A:266:MET:N	2.23	0.53
1:A:129[B]:LYS:HG2	4:A:2235:HOH:O	2.09	0.53
1:A:126:ALA:O	1:A:129[A]:LYS:HE3	2.10	0.52
1:B:4:PRO:HG2	4:B:2008:HOH:O	2.09	0.52
4:A:2024:HOH:O	1:B:66[B]:LYS:HD3	2.10	0.50
1:B:148[A]:LEU:HG	1:B:154[A]:MET:SD	2.52	0.50
1:A:129[B]:LYS:HZ2	1:A:154:MET:HA	1.78	0.49
1:A:117:LYS:HD2	1:A:198:ASN:ND2	2.30	0.47
1:A:20:VAL:CG1	1:A:68:ILE:HG13	2.45	0.47
1:A:129[B]:LYS:HD3	4:A:2234:HOH:O	2.13	0.47
1:B:232[A]:GLN:HB3	4:B:2304:HOH:O	2.15	0.46
1:B:232[B]:GLN:NE2	4:B:2307:HOH:O	2.49	0.45
1:B:150:GLU:HG3	4:B:2216:HOH:O	2.16	0.45
1:B:118:LYS:NZ	1:B:197[B]:ASP:OD1	2.49	0.45
1:A:67[B]:LEU:HD11	4:A:2096:HOH:O	2.16	0.43
1:A:129[B]:LYS:HG2	4:A:2234:HOH:O	2.18	0.43
1:B:20:VAL:CG1	1:B:68:ILE:HG13	2.48	0.43
1:B:132:ALA:O	1:B:177[A]:VAL:HG22	2.18	0.43
1:B:129[B]:LYS:HG3	1:B:154[B]:MET:CE	2.49	0.43
1:B:118:LYS:HE3	4:B:2189:HOH:O	2.19	0.42
1:B:253:PRO:HG2	4:B:2028:HOH:O	2.18	0.42
1:A:129[B]:LYS:HZ3	1:A:154:MET:HG2	1.83	0.40

There are no symmetry-related clashes.

5.3 Torsion angles [i](#)

5.3.1 Protein backbone [i](#)

In the following table, the Percentiles column shows the percent Ramachandran outliers of the chain as a percentile score with respect to all X-ray entries followed by that with respect to entries of similar resolution.

The Analysed column shows the number of residues for which the backbone conformation was analysed, and the total number of residues.

Mol	Chain	Analysed	Favoured	Allowed	Outliers	Percentiles	
1	A	294/287 (102%)	289 (98%)	5 (2%)	0	100	100
1	B	299/287 (104%)	295 (99%)	4 (1%)	0	100	100
All	All	593/574 (103%)	584 (98%)	9 (2%)	0	100	100

There are no Ramachandran outliers to report.

5.3.2 Protein sidechains [i](#)

In the following table, the Percentiles column shows the percent sidechain outliers of the chain as a percentile score with respect to all X-ray entries followed by that with respect to entries of similar resolution.

The Analysed column shows the number of residues for which the sidechain conformation was analysed, and the total number of residues.

Mol	Chain	Analysed	Rotameric	Outliers	Percentiles	
1	A	256/247 (104%)	248 (97%)	8 (3%)	35	6
1	B	261/247 (106%)	254 (97%)	7 (3%)	40	8
All	All	517/494 (105%)	502 (97%)	15 (3%)	32	7

All (15) residues with a non-rotameric sidechain are listed below:

Mol	Chain	Res	Type
1	A	117	LYS
1	A	147[A]	LYS
1	A	147[B]	LYS
1	A	197	ASP
1	A	217	LYS
1	A	232	GLN
1	A	265	GLU
1	A	274	ASN

Continued on next page...

Continued from previous page...

Mol	Chain	Res	Type
1	B	60	LYS
1	B	81	ASN
1	B	118	LYS
1	B	194[A]	LYS
1	B	198	ASN
1	B	204	LYS
1	B	215	LEU

Sometimes sidechains can be flipped to improve hydrogen bonding and reduce clashes. All (6) such sidechains are listed below:

Mol	Chain	Res	Type
1	A	64	GLN
1	A	73	GLN
1	A	152	GLN
1	A	274	ASN
1	B	59	ASN
1	B	81	ASN

5.3.3 RNA [i](#)

There are no RNA molecules in this entry.

5.4 Non-standard residues in protein, DNA, RNA chains [i](#)

There are no non-standard protein/DNA/RNA residues in this entry.

5.5 Carbohydrates [i](#)

There are no oligosaccharides in this entry.

5.6 Ligand geometry [i](#)

4 ligands are modelled in this entry.

In the following table, the Counts columns list the number of bonds (or angles) for which Mogul statistics could be retrieved, the number of bonds (or angles) that are observed in the model and the number of bonds (or angles) that are defined in the Chemical Component Dictionary. The Link column lists molecule types, if any, to which the group is linked. The Z score for a bond length (or angle) is the number of standard deviations the observed value is removed from the

expected value. A bond length (or angle) with $|Z| > 2$ is considered an outlier worth inspection. RMSZ is the root-mean-square of all Z scores of the bond lengths (or angles).

Mol	Type	Chain	Res	Link	Bond lengths			Bond angles		
					Counts	RMSZ	# Z > 2	Counts	RMSZ	# Z > 2
3	TRS	B	1281	-	7,7,7	0.64	0	9,9,9	0.77	0
2	GLU	B	1280	-	8,9,9	1.94	2 (25%)	10,11,11	1.30	1 (10%)
2	GLU	A	1280	-	8,9,9	2.02	3 (37%)	10,11,11	1.20	1 (10%)
3	TRS	A	1281	-	7,7,7	0.82	0	9,9,9	0.99	0

In the following table, the Chirals column lists the number of chiral outliers, the number of chiral centers analysed, the number of these observed in the model and the number defined in the Chemical Component Dictionary. Similar counts are reported in the Torsion and Rings columns. '-' means no outliers of that kind were identified.

Mol	Type	Chain	Res	Link	Chirals	Torsions	Rings
3	TRS	B	1281	-	-	0/9/9/9	-
2	GLU	B	1280	-	-	2/9/9/9	-
2	GLU	A	1280	-	-	0/9/9/9	-
3	TRS	A	1281	-	-	1/9/9/9	-

All (5) bond length outliers are listed below:

Mol	Chain	Res	Type	Atoms	Z	Observed(Å)	Ideal(Å)
2	B	1280	GLU	CB-CA	-3.96	1.44	1.53
2	A	1280	GLU	CB-CG	-3.60	1.41	1.52
2	B	1280	GLU	CB-CG	-3.23	1.42	1.52
2	A	1280	GLU	OE2-CD	-2.52	1.22	1.30
2	A	1280	GLU	CB-CA	-2.30	1.48	1.53

All (2) bond angle outliers are listed below:

Mol	Chain	Res	Type	Atoms	Z	Observed(°)	Ideal(°)
2	B	1280	GLU	CB-CA-C	2.73	116.80	110.30
2	A	1280	GLU	CB-CA-C	2.06	115.21	110.30

There are no chirality outliers.

All (3) torsion outliers are listed below:

Mol	Chain	Res	Type	Atoms
2	B	1280	GLU	C-CA-CB-CG
3	A	1281	TRS	C1-C-C2-O2
2	B	1280	GLU	N-CA-CB-CG

There are no ring outliers.

No monomer is involved in short contacts.

5.7 Other polymers

There are no such residues in this entry.

5.8 Polymer linkage issues

There are no chain breaks in this entry.

6 Fit of model and data [i](#)

6.1 Protein, DNA and RNA chains [i](#)

In the following table, the column labelled '#RSRZ > 2' contains the number (and percentage) of RSRZ outliers, followed by percent RSRZ outliers for the chain as percentile scores relative to all X-ray entries and entries of similar resolution. The OWAB column contains the minimum, median, 95th percentile and maximum values of the occupancy-weighted average B-factor per residue. The column labelled 'Q < 0.9' lists the number of (and percentage) of residues with an average occupancy less than 0.9.

Mol	Chain	Analysed	<RSRZ>	#RSRZ>2	OWAB(Å ²)	Q<0.9
1	A	277/287 (96%)	-0.27	6 (2%) 62 69	4, 10, 26, 46	16 (5%)
1	B	277/287 (96%)	-0.25	7 (2%) 58 66	5, 10, 27, 48	21 (7%)
All	All	554/574 (96%)	-0.26	13 (2%) 61 68	4, 10, 27, 48	37 (6%)

All (13) RSRZ outliers are listed below:

Mol	Chain	Res	Type	RSRZ
1	B	279	ASN	8.6
1	B	197[A]	ASP	6.4
1	A	278	LEU	4.3
1	B	3	ALA	3.6
1	B	119	GLY	3.2
1	A	3	ALA	3.0
1	B	278	LEU	3.0
1	A	277	ALA	2.8
1	B	120	GLY	2.6
1	A	119	GLY	2.2
1	B	121	ASP	2.2
1	A	265	GLU	2.2
1	A	269	LEU	2.1

6.2 Non-standard residues in protein, DNA, RNA chains [i](#)

There are no non-standard protein/DNA/RNA residues in this entry.

6.3 Carbohydrates [i](#)

There are no monosaccharides in this entry.

6.4 Ligands [i](#)

In the following table, the Atoms column lists the number of modelled atoms in the group and the number defined in the chemical component dictionary. The B-factors column lists the minimum, median, 95th percentile and maximum values of B factors of atoms in the group. The column labelled 'Q< 0.9' lists the number of atoms with occupancy less than 0.9.

Mol	Type	Chain	Res	Atoms	RSCC	RSR	B-factors(\AA^2)	Q<0.9
3	TRS	B	1281	8/8	0.94	0.07	14,19,24,25	0
3	TRS	A	1281	8/8	0.95	0.06	15,19,20,21	0
2	GLU	A	1280	10/10	0.99	0.04	5,6,9,9	0
2	GLU	B	1280	10/10	0.99	0.03	5,6,8,9	0

6.5 Other polymers [i](#)

There are no such residues in this entry.