



# Full wwPDB X-ray Structure Validation Report ⓘ

Apr 18, 2024 – 12:11 PM EDT

PDB ID : 8VHD  
Title : Crystal Structure of Human IDH1 R132Q in complex with NADPH and Isocitrate  
Authors : Mealka, M.; Sohl, C.D.; Huxford, T.  
Deposited on : 2023-12-31  
Resolution : 2.38 Å(reported)

This is a Full wwPDB X-ray Structure Validation Report for a publicly released PDB entry.

We welcome your comments at [validation@mail.wwpdb.org](mailto:validation@mail.wwpdb.org)

A user guide is available at

<https://www.wwpdb.org/validation/2017/XrayValidationReportHelp>

with specific help available everywhere you see the ⓘ symbol.

The types of validation reports are described at

<http://www.wwpdb.org/validation/2017/FAQs#types>.

---

The following versions of software and data (see [references ⓘ](#)) were used in the production of this report:

MolProbity : 4.02b-467  
Mogul : 1.8.5 (274361), CSD as541be (2020)  
Xtriage (Phenix) : 1.13  
EDS : 2.36.1  
buster-report : 1.1.7 (2018)  
Percentile statistics : 20191225.v01 (using entries in the PDB archive December 25th 2019)  
Refmac : 5.8.0158  
CCP4 : 7.0.044 (Gargrove)  
Ideal geometry (proteins) : Engh & Huber (2001)  
Ideal geometry (DNA, RNA) : Parkinson et al. (1996)  
Validation Pipeline (wwPDB-VP) : 2.36.1

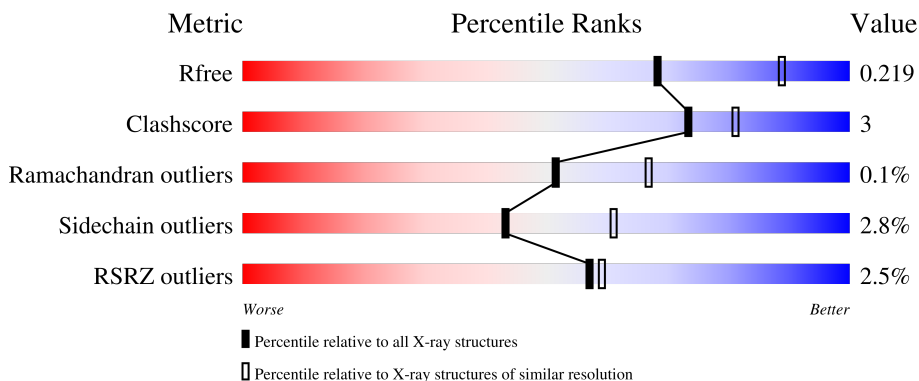
# 1 Overall quality at a glance

The following experimental techniques were used to determine the structure:

*X-RAY DIFFRACTION*

The reported resolution of this entry is 2.38 Å.

Percentile scores (ranging between 0-100) for global validation metrics of the entry are shown in the following graphic. The table shows the number of entries on which the scores are based.



Metric	Whole archive (#Entries)	Similar resolution (#Entries, resolution range(Å))
$R_{free}$	130704	5509 (2.40-2.36)
Clashscore	141614	6082 (2.40-2.36)
Ramachandran outliers	138981	5973 (2.40-2.36)
Sidechain outliers	138945	5975 (2.40-2.36)
RSRZ outliers	127900	5397 (2.40-2.36)

The table below summarises the geometric issues observed across the polymeric chains and their fit to the electron density. The red, orange, yellow and green segments of the lower bar indicate the fraction of residues that contain outliers for  $\geq 3$ , 2, 1 and 0 types of geometric quality criteria respectively. A grey segment represents the fraction of residues that are not modelled. The numeric value for each fraction is indicated below the corresponding segment, with a dot representing fractions  $\leq 5\%$ . The upper red bar (where present) indicates the fraction of residues that have poor fit to the electron density. The numeric value is given above the bar.

Mol	Chain	Length	Quality of chain
1	A	430	 2% 88% 7% . .
1	B	430	 2% 88% 7% .
1	C	430	 3% 84% 12% .
1	D	430	 2% 87% 9% .

## 2 Entry composition [i](#)

There are 7 unique types of molecules in this entry. The entry contains 14146 atoms, of which 0 are hydrogens and 0 are deuteriums.

In the tables below, the ZeroOcc column contains the number of atoms modelled with zero occupancy, the AltConf column contains the number of residues with at least one atom in alternate conformation and the Trace column contains the number of residues modelled with at most 2 atoms.

- Molecule 1 is a protein called Isocitrate dehydrogenase [NADP] cytoplasmic.

Mol	Chain	Residues	Atoms					ZeroOcc	AltConf	Trace
			Total	C	N	O	S			
1	A	414	3286	2087	557	623	19	0	1	0
1	B	411	3288	2087	556	627	18	0	5	0
1	C	414	3273	2079	553	622	19	0	0	0
1	D	411	3261	2074	551	618	18	0	1	0

There are 68 discrepancies between the modelled and reference sequences:

Chain	Residue	Modelled	Actual	Comment	Reference
A	-15	HIS	-	expression tag	UNP O75874
A	-14	HIS	-	expression tag	UNP O75874
A	-13	HIS	-	expression tag	UNP O75874
A	-12	HIS	-	expression tag	UNP O75874
A	-11	HIS	-	expression tag	UNP O75874
A	-10	HIS	-	expression tag	UNP O75874
A	-9	SER	-	expression tag	UNP O75874
A	-8	SER	-	expression tag	UNP O75874
A	-7	GLY	-	expression tag	UNP O75874
A	-6	LEU	-	expression tag	UNP O75874
A	-5	VAL	-	expression tag	UNP O75874
A	-4	PRO	-	expression tag	UNP O75874
A	-3	ARG	-	expression tag	UNP O75874
A	-2	GLY	-	expression tag	UNP O75874
A	-1	SER	-	expression tag	UNP O75874
A	0	HIS	-	expression tag	UNP O75874
A	132	GLN	ARG	engineered mutation	UNP O75874
B	-15	HIS	-	expression tag	UNP O75874
B	-14	HIS	-	expression tag	UNP O75874
B	-13	HIS	-	expression tag	UNP O75874
B	-12	HIS	-	expression tag	UNP O75874

*Continued on next page...*

*Continued from previous page...*

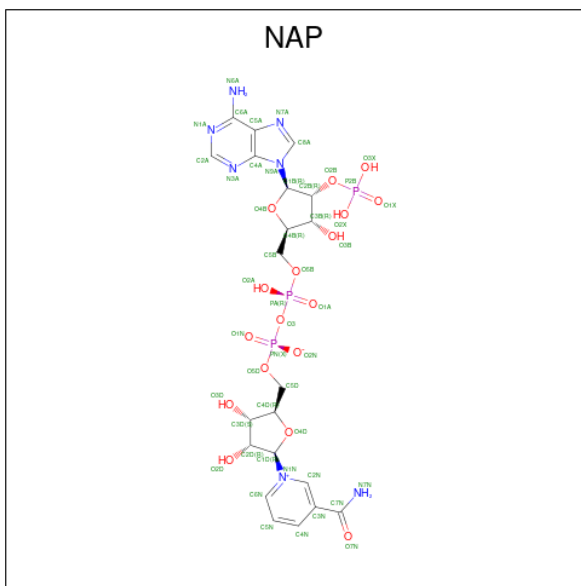
Chain	Residue	Modelled	Actual	Comment	Reference
B	-11	HIS	-	expression tag	UNP O75874
B	-10	HIS	-	expression tag	UNP O75874
B	-9	SER	-	expression tag	UNP O75874
B	-8	SER	-	expression tag	UNP O75874
B	-7	GLY	-	expression tag	UNP O75874
B	-6	LEU	-	expression tag	UNP O75874
B	-5	VAL	-	expression tag	UNP O75874
B	-4	PRO	-	expression tag	UNP O75874
B	-3	ARG	-	expression tag	UNP O75874
B	-2	GLY	-	expression tag	UNP O75874
B	-1	SER	-	expression tag	UNP O75874
B	0	HIS	-	expression tag	UNP O75874
B	132	GLN	ARG	engineered mutation	UNP O75874
C	-15	HIS	-	expression tag	UNP O75874
C	-14	HIS	-	expression tag	UNP O75874
C	-13	HIS	-	expression tag	UNP O75874
C	-12	HIS	-	expression tag	UNP O75874
C	-11	HIS	-	expression tag	UNP O75874
C	-10	HIS	-	expression tag	UNP O75874
C	-9	SER	-	expression tag	UNP O75874
C	-8	SER	-	expression tag	UNP O75874
C	-7	GLY	-	expression tag	UNP O75874
C	-6	LEU	-	expression tag	UNP O75874
C	-5	VAL	-	expression tag	UNP O75874
C	-4	PRO	-	expression tag	UNP O75874
C	-3	ARG	-	expression tag	UNP O75874
C	-2	GLY	-	expression tag	UNP O75874
C	-1	SER	-	expression tag	UNP O75874
C	0	HIS	-	expression tag	UNP O75874
C	132	GLN	ARG	engineered mutation	UNP O75874
D	-15	HIS	-	expression tag	UNP O75874
D	-14	HIS	-	expression tag	UNP O75874
D	-13	HIS	-	expression tag	UNP O75874
D	-12	HIS	-	expression tag	UNP O75874
D	-11	HIS	-	expression tag	UNP O75874
D	-10	HIS	-	expression tag	UNP O75874
D	-9	SER	-	expression tag	UNP O75874
D	-8	SER	-	expression tag	UNP O75874
D	-7	GLY	-	expression tag	UNP O75874
D	-6	LEU	-	expression tag	UNP O75874
D	-5	VAL	-	expression tag	UNP O75874
D	-4	PRO	-	expression tag	UNP O75874

*Continued on next page...*

Continued from previous page...

Chain	Residue	Modelled	Actual	Comment	Reference
D	-3	ARG	-	expression tag	UNP O75874
D	-2	GLY	-	expression tag	UNP O75874
D	-1	SER	-	expression tag	UNP O75874
D	0	HIS	-	expression tag	UNP O75874
D	132	GLN	ARG	engineered mutation	UNP O75874

- Molecule 2 is NADP NICOTINAMIDE-ADENINE-DINUCLEOTIDE PHOSPHATE (three-letter code: NAP) (formula: C<sub>21</sub>H<sub>28</sub>N<sub>7</sub>O<sub>17</sub>P<sub>3</sub>) (labeled as "Ligand of Interest" by depositor).



Mol	Chain	Residues	Atoms				ZeroOcc	AltConf	
			Total	C	N	O			P
2	A	1	48	21	7	17	3	0	0
2	B	1	48	21	7	17	3	0	0
2	C	1	48	21	7	17	3	0	0
2	D	1	48	21	7	17	3	0	0

- Molecule 3 is IODIDE ION (three-letter code: IOD) (formula: I).

Mol	Chain	Residues	Atoms	ZeroOcc	AltConf
3	A	1	Total 1 1	0	0
3	B	1	Total 1 1	0	0

Continued on next page...

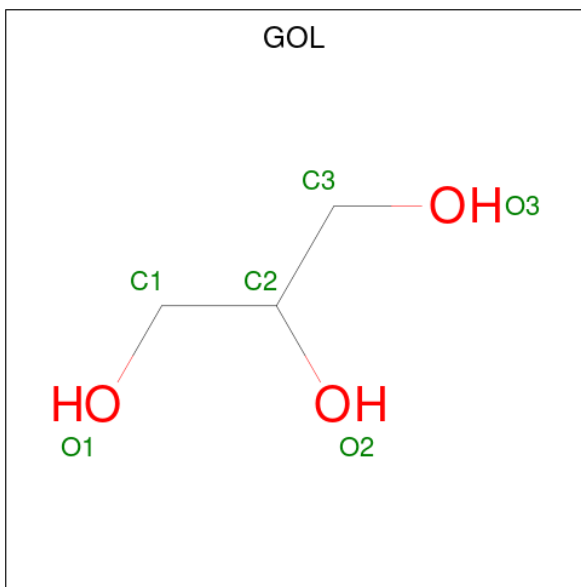
Continued from previous page...

Mol	Chain	Residues	Atoms	ZeroOcc	AltConf
3	C	1	Total I 1 1	0	0
3	D	1	Total I 1 1	0	0

- Molecule 4 is CALCIUM ION (three-letter code: CA) (formula: Ca).

Mol	Chain	Residues	Atoms	ZeroOcc	AltConf
4	A	1	Total Ca 1 1	0	0
4	B	1	Total Ca 1 1	0	0
4	C	1	Total Ca 1 1	0	0
4	D	1	Total Ca 1 1	0	0

- Molecule 5 is GLYCEROL (three-letter code: GOL) (formula: C<sub>3</sub>H<sub>8</sub>O<sub>3</sub>).



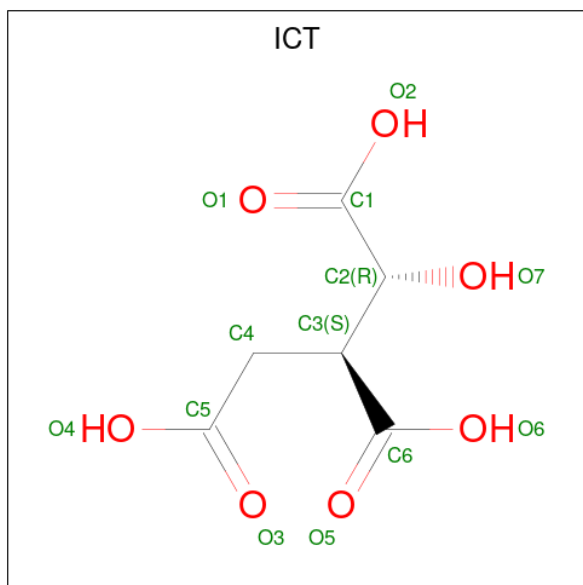
Mol	Chain	Residues	Atoms	ZeroOcc	AltConf
5	B	1	Total C O 6 3 3	0	0
5	C	1	Total C O 6 3 3	0	0
5	D	1	Total C O 6 3 3	0	0

Continued on next page...

Continued from previous page...

Mol	Chain	Residues	Atoms			ZeroOcc	AltConf
5	D	1	Total	C	O	0	0
			6	3	3		

- Molecule 6 is ISOCITRIC ACID (three-letter code: ICT) (formula: C<sub>6</sub>H<sub>8</sub>O<sub>7</sub>) (labeled as "Ligand of Interest" by depositor).



Mol	Chain	Residues	Atoms			ZeroOcc	AltConf
6	C	1	Total	C	O	0	0
			13	6	7		

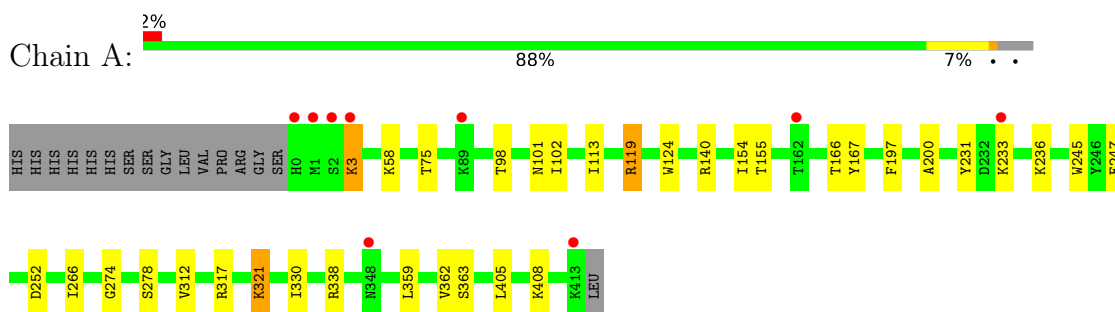
- Molecule 7 is water.

Mol	Chain	Residues	Atoms		ZeroOcc	AltConf
7	A	230	Total	O	0	0
			230	230		
7	B	198	Total	O	0	0
			198	198		
7	C	160	Total	O	0	0
			160	160		
7	D	213	Total	O	0	0
			213	213		

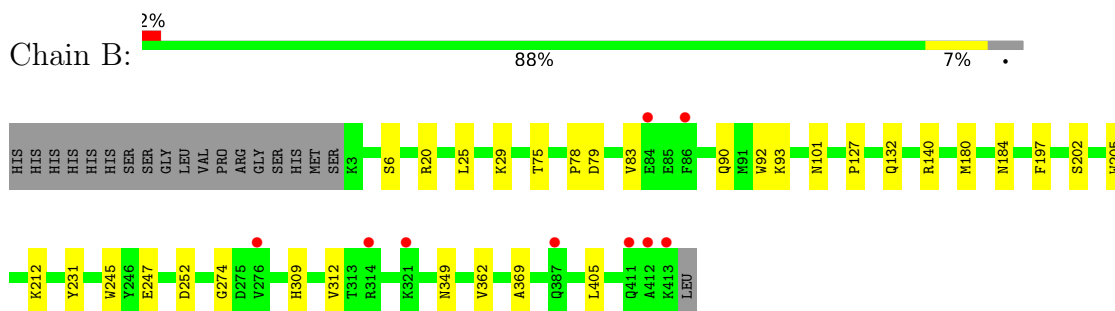
### 3 Residue-property plots [i](#)

These plots are drawn for all protein, RNA, DNA and oligosaccharide chains in the entry. The first graphic for a chain summarises the proportions of the various outlier classes displayed in the second graphic. The second graphic shows the sequence view annotated by issues in geometry and electron density. Residues are color-coded according to the number of geometric quality criteria for which they contain at least one outlier: green = 0, yellow = 1, orange = 2 and red = 3 or more. A red dot above a residue indicates a poor fit to the electron density ( $RSRZ > 2$ ). Stretches of 2 or more consecutive residues without any outlier are shown as a green connector. Residues present in the sample, but not in the model, are shown in grey.

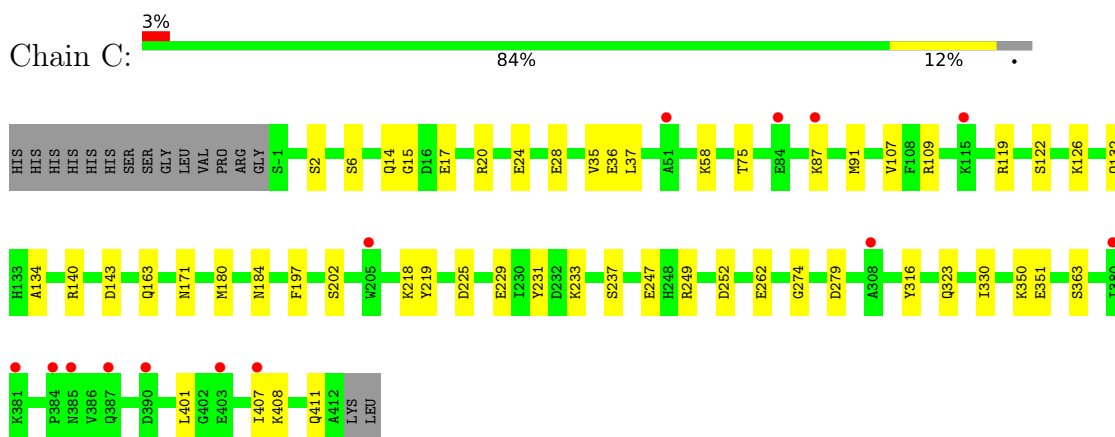
- Molecule 1: Isocitrate dehydrogenase [NADP] cytoplasmic



- Molecule 1: Isocitrate dehydrogenase [NADP] cytoplasmic

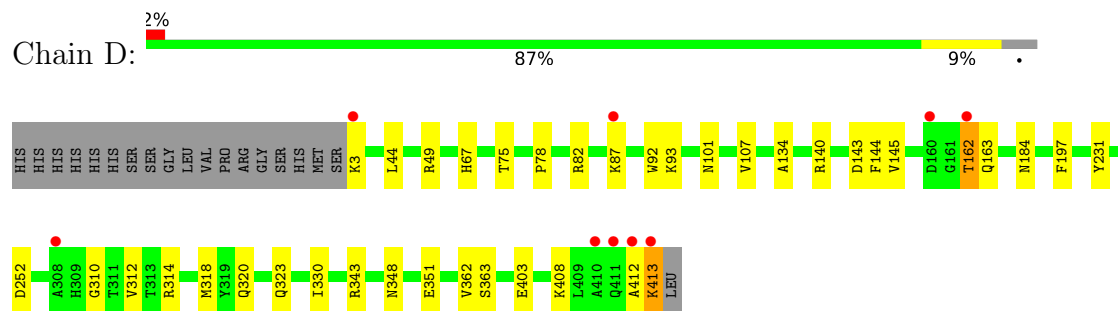


- Molecule 1: Isocitrate dehydrogenase [NADP] cytoplasmic



- Molecule 1: Isocitrate dehydrogenase [NADP] cytoplasmic





## 4 Data and refinement statistics

Property	Value	Source
Space group	P 1 21 1	Depositor
Cell constants a, b, c, $\alpha$ , $\beta$ , $\gamma$	84.41Å 103.89Å 108.27Å 90.00° 98.54° 90.00°	Depositor
Resolution (Å)	39.18 – 2.38 39.18 – 2.38	Depositor EDS
% Data completeness (in resolution range)	96.5 (39.18-2.38) 96.5 (39.18-2.38)	Depositor EDS
$R_{merge}$	(Not available)	Depositor
$R_{sym}$	(Not available)	Depositor
$\langle I/\sigma(I) \rangle$ <sup>1</sup>	1.52 (at 2.37Å)	Xtrriage
Refinement program	PHENIX (1.20.1_4487: ???)	Depositor
R, $R_{free}$	0.169 , 0.220 0.169 , 0.219	Depositor DCC
$R_{free}$ test set	3456 reflections (4.80%)	wwPDB-VP
Wilson B-factor (Å <sup>2</sup> )	22.9	Xtrriage
Anisotropy	0.197	Xtrriage
Bulk solvent $k_{sol}$ (e/Å <sup>3</sup> ), $B_{sol}$ (Å <sup>2</sup> )	0.35 , 40.9	EDS
L-test for twinning <sup>2</sup>	$\langle  L  \rangle = 0.49$ , $\langle L^2 \rangle = 0.32$	Xtrriage
Estimated twinning fraction	No twinning to report.	Xtrriage
$F_o, F_c$ correlation	0.94	EDS
Total number of atoms	14146	wwPDB-VP
Average B, all atoms (Å <sup>2</sup> )	26.0	wwPDB-VP

Xtrriage's analysis on translational NCS is as follows: *The largest off-origin peak in the Patterson function is 5.24% of the height of the origin peak. No significant pseudotranslation is detected.*

<sup>1</sup>Intensities estimated from amplitudes.

<sup>2</sup>Theoretical values of  $\langle |L| \rangle$ ,  $\langle L^2 \rangle$  for acentric reflections are 0.5, 0.333 respectively for untwinned datasets, and 0.375, 0.2 for perfectly twinned datasets.

## 5 Model quality [i](#)

### 5.1 Standard geometry [i](#)

Bond lengths and bond angles in the following residue types are not validated in this section: NAP, GOL, ICT, IOD, CA

The Z score for a bond length (or angle) is the number of standard deviations the observed value is removed from the expected value. A bond length (or angle) with  $|Z| > 5$  is considered an outlier worth inspection. RMSZ is the root-mean-square of all Z scores of the bond lengths (or angles).

Mol	Chain	Bond lengths		Bond angles	
		RMSZ	# Z  >5	RMSZ	# Z  >5
1	A	0.24	0/3355	0.44	0/4524
1	B	0.24	0/3356	0.45	0/4527
1	C	0.24	0/3342	0.45	0/4508
1	D	0.24	0/3329	0.45	0/4489
All	All	0.24	0/13382	0.45	0/18048

There are no bond length outliers.

There are no bond angle outliers.

There are no chirality outliers.

There are no planarity outliers.

### 5.2 Too-close contacts [i](#)

In the following table, the Non-H and H(model) columns list the number of non-hydrogen atoms and hydrogen atoms in the chain respectively. The H(added) column lists the number of hydrogen atoms added and optimized by MolProbity. The Clashes column lists the number of clashes within the asymmetric unit, whereas Symm-Clashes lists symmetry-related clashes.

Mol	Chain	Non-H	H(model)	H(added)	Clashes	Symm-Clashes
1	A	3286	0	3245	21	0
1	B	3288	0	3248	17	0
1	C	3273	0	3225	28	0
1	D	3261	0	3218	23	0
2	A	48	0	25	3	0
2	B	48	0	25	1	0
2	C	48	0	25	3	0
2	D	48	0	25	5	0
3	A	1	0	0	0	0

*Continued on next page...*

Continued from previous page...

Mol	Chain	Non-H	H(model)	H(added)	Clashes	Symm-Clashes
3	B	1	0	0	0	0
3	C	1	0	0	0	0
3	D	1	0	0	0	0
4	A	1	0	0	0	0
4	B	1	0	0	0	0
4	C	1	0	0	0	0
4	D	1	0	0	0	0
5	B	6	0	8	0	0
5	C	6	0	8	0	0
5	D	12	0	16	0	0
6	C	13	0	4	3	0
7	A	230	0	0	0	0
7	B	198	0	0	1	0
7	C	160	0	0	1	0
7	D	213	0	0	0	0
All	All	14146	0	13072	87	0

The all-atom clashscore is defined as the number of clashes found per 1000 atoms (including hydrogen atoms). The all-atom clashscore for this structure is 3.

All (87) close contacts within the same asymmetric unit are listed below, sorted by their clash magnitude.

Atom-1	Atom-2	Interatomic distance (Å)	Clash overlap (Å)
1:D:75:THR:O	2:D:501:NAP:H2N	1.85	0.77
6:C:501:ICT:H2	2:C:503:NAP:C4N	2.21	0.70
1:A:113:ILE:HG23	1:A:119:ARG:HH21	1.56	0.69
1:D:310:GLY:HA3	2:D:501:NAP:H52N	1.76	0.66
1:B:75:THR:O	2:B:502:NAP:H2N	1.96	0.65
1:B:101:ASN:HD21	1:B:140:ARG:HH11	1.50	0.59
1:D:67:HIS:O	1:D:343:ARG:NH2	2.35	0.59
1:B:101:ASN:ND2	1:B:140:ARG:HH11	2.01	0.58
1:C:218:LYS:HE2	1:D:145:VAL:HG23	1.85	0.58
1:B:140:ARG:NH2	7:B:603:HOH:O	2.37	0.58
1:B:127:PRO:HG2	1:B:205:TRP:HH2	1.68	0.58
2:D:501:NAP:O2A	2:D:501:NAP:H8A	2.05	0.57
1:C:249:ARG:NH2	7:C:606:HOH:O	2.37	0.57
1:D:310:GLY:CA	2:D:501:NAP:H52N	2.36	0.56
1:C:218:LYS:HZ1	1:D:145:VAL:H	1.55	0.55
1:A:362:VAL:HG23	1:A:408:LYS:HD2	1.89	0.54
1:D:101:ASN:HB2	1:D:140:ARG:CZ	2.38	0.54
1:C:24:GLU:O	1:C:28:GLU:HG2	2.07	0.54

Continued on next page...

*Continued from previous page...*

Atom-1	Atom-2	Interatomic distance (Å)	Clash overlap (Å)
1:C:143:ASP:HB3	1:C:180:MET:HG3	1.90	0.53
1:C:126:LYS:HD2	1:C:262:GLU:HG3	1.91	0.53
1:C:132:GLN:HB2	1:C:274:GLY:HA3	1.90	0.53
1:B:362:VAL:HG21	1:B:405:LEU:HA	1.90	0.53
1:C:225:ASP:O	1:C:229:GLU:HG3	2.09	0.53
1:D:318:MET:HB3	1:D:323:GLN:HB2	1.91	0.52
1:C:107:VAL:HG23	1:C:134:ALA:HB2	1.92	0.52
2:A:501:NAP:C8A	2:A:501:NAP:H52A	2.40	0.52
6:C:501:ICT:H2	2:C:503:NAP:H4N	1.91	0.51
1:A:312:VAL:HG13	2:A:501:NAP:H3B	1.92	0.51
1:B:212:LYS:NZ	1:B:252:ASP:OD2	2.26	0.51
1:B:132:GLN:HB2	1:B:274:GLY:HA3	1.92	0.51
1:A:359:LEU:HD13	1:A:405:LEU:HD22	1.93	0.51
1:A:98:THR:O	1:A:102:ILE:HG13	2.11	0.51
1:C:218:LYS:HD3	1:D:144:PHE:HA	1.93	0.51
1:C:75:THR:O	2:C:503:NAP:H2N	2.11	0.50
1:D:107:VAL:HG23	1:D:134:ALA:HB2	1.94	0.49
1:A:101:ASN:HD21	1:A:140:ARG:NH1	2.11	0.49
1:A:330:ILE:HD12	1:A:363:SER:HB3	1.95	0.49
1:A:245:TRP:HD1	1:A:247:GLU:HG3	1.78	0.48
1:C:233:LYS:HD3	1:C:233:LYS:HA	1.62	0.48
1:D:44:LEU:O	1:D:49[A]:ARG:NE	2.43	0.48
1:D:330:ILE:HD12	1:D:363:SER:HB3	1.95	0.48
1:B:369:ALA:O	1:C:323:GLN:HG2	2.14	0.48
1:C:330:ILE:HD12	1:C:363:SER:HB3	1.97	0.47
1:D:197:PHE:CZ	1:D:231:TYR:HB2	2.49	0.47
1:A:101:ASN:HD21	1:A:140:ARG:HH11	1.62	0.46
1:A:317:ARG:O	1:A:321:LYS:HE2	2.16	0.46
1:D:362:VAL:HG23	1:D:408:LYS:HD2	1.98	0.46
1:B:245:TRP:HD1	1:B:247:GLU:HG3	1.81	0.45
2:D:501:NAP:H6N	2:D:501:NAP:H2D	1.63	0.45
1:B:25:LEU:O	1:B:29:LYS:HB2	2.17	0.45
1:B:6:SER:O	1:B:349:ASN:ND2	2.49	0.45
1:C:218:LYS:NZ	1:D:145:VAL:H	2.14	0.45
1:B:78:PRO:HD2	1:B:92:TRP:O	2.17	0.45
1:C:219:TYR:HB2	1:D:143:ASP:HB2	1.98	0.44
1:D:351:GLU:H	1:D:351:GLU:CD	2.20	0.44
1:A:155:THR:HG22	1:A:166:THR:HG23	2.00	0.44
1:B:79:ASP:O	1:B:83:VAL:HG13	2.18	0.44
1:A:197:PHE:CZ	1:A:231:TYR:HB2	2.52	0.44
1:B:197:PHE:CZ	1:B:231:TYR:HB2	2.53	0.44

*Continued on next page...*

Continued from previous page...

Atom-1	Atom-2	Interatomic distance (Å)	Clash overlap (Å)
1:D:413:LYS:HD3	1:D:413:LYS:HA	1.79	0.44
1:A:252:ASP:OD1	1:A:252:ASP:N	2.50	0.43
1:A:274:GLY:O	1:A:278:SER:HB3	2.18	0.43
1:D:78:PRO:HD2	1:D:92:TRP:O	2.18	0.43
1:C:119:ARG:NH2	1:C:122:SER:O	2.38	0.43
1:B:369:ALA:HB1	1:C:323:GLN:HG2	2.01	0.43
1:A:58:LYS:HA	1:A:58:LYS:HD2	1.83	0.42
1:A:236:LYS:HB3	1:A:236:LYS:HE2	1.84	0.42
1:D:314:ARG:O	1:D:318:MET:HG3	2.19	0.42
1:A:75:THR:O	2:A:501:NAP:H2N	2.18	0.42
1:A:119:ARG:HD3	1:A:124:TRP:O	2.19	0.42
1:C:15:GLY:O	1:C:20:ARG:NE	2.50	0.42
1:D:403:GLU:H	1:D:403:GLU:HG2	1.71	0.42
1:C:247:GLU:OE1	1:C:249:ARG:NH1	2.29	0.42
1:D:252:ASP:N	1:D:252:ASP:OD1	2.52	0.42
1:D:162:THR:HG22	1:D:163:GLN:H	1.85	0.41
1:A:200:ALA:HA	1:A:266:ILE:HG13	2.01	0.41
1:A:3:LYS:HD3	1:A:3:LYS:H	1.84	0.41
1:B:101:ASN:HD21	1:B:140:ARG:NH1	2.15	0.41
1:C:58:LYS:H	1:C:58:LYS:HG2	1.69	0.41
1:A:154:ILE:HG23	1:A:167:TYR:HB2	2.03	0.40
1:C:17:GLU:HG2	1:C:316:TYR:CD2	2.56	0.40
1:C:109:ARG:HH22	6:C:501:ICT:C1	2.34	0.40
1:C:229:GLU:HG3	1:C:229:GLU:H	1.70	0.40
1:C:363:SER:HA	1:C:401:LEU:HD21	2.02	0.40
1:C:197:PHE:CZ	1:C:231:TYR:HB2	2.56	0.40
1:C:407:ILE:O	1:C:411:GLN:HG3	2.21	0.40
1:C:35:VAL:HG12	1:C:37:LEU:HG	2.03	0.40

There are no symmetry-related clashes.

## 5.3 Torsion angles [\(i\)](#)

### 5.3.1 Protein backbone [\(i\)](#)

In the following table, the Percentiles column shows the percent Ramachandran outliers of the chain as a percentile score with respect to all X-ray entries followed by that with respect to entries of similar resolution.

The Analysed column shows the number of residues for which the backbone conformation was analysed, and the total number of residues.

Mol	Chain	Analysed	Favoured	Allowed	Outliers	Percentiles	
1	A	413/430 (96%)	397 (96%)	16 (4%)	0	100	100
1	B	414/430 (96%)	402 (97%)	11 (3%)	1 (0%)	47	61
1	C	412/430 (96%)	398 (97%)	14 (3%)	0	100	100
1	D	410/430 (95%)	396 (97%)	13 (3%)	1 (0%)	47	61
All	All	1649/1720 (96%)	1593 (97%)	54 (3%)	2 (0%)	51	67

All (2) Ramachandran outliers are listed below:

Mol	Chain	Res	Type
1	D	412	ALA
1	B	312	VAL

### 5.3.2 Protein sidechains [i](#)

In the following table, the Percentiles column shows the percent sidechain outliers of the chain as a percentile score with respect to all X-ray entries followed by that with respect to entries of similar resolution.

The Analysed column shows the number of residues for which the sidechain conformation was analysed, and the total number of residues.

Mol	Chain	Analysed	Rotameric	Outliers	Percentiles	
1	A	350/364 (96%)	345 (99%)	5 (1%)	67	81
1	B	352/364 (97%)	345 (98%)	7 (2%)	55	72
1	C	348/364 (96%)	331 (95%)	17 (5%)	25	38
1	D	345/364 (95%)	335 (97%)	10 (3%)	42	60
All	All	1395/1456 (96%)	1356 (97%)	39 (3%)	43	61

All (39) residues with a non-rotameric sidechain are listed below:

Mol	Chain	Res	Type
1	A	3	LYS
1	A	119	ARG
1	A	233	LYS
1	A	321	LYS
1	A	338	ARG
1	B	20	ARG
1	B	90	GLN
1	B	93	LYS
1	B	180	MET

*Continued on next page...*

*Continued from previous page...*

Mol	Chain	Res	Type
1	B	184	ASN
1	B	202	SER
1	B	309	HIS
1	C	2	SER
1	C	6	SER
1	C	14	GLN
1	C	36	GLU
1	C	87	LYS
1	C	91	MET
1	C	140	ARG
1	C	163	GLN
1	C	171	ASN
1	C	184	ASN
1	C	202	SER
1	C	237	SER
1	C	252	ASP
1	C	279	ASP
1	C	350	LYS
1	C	351	GLU
1	C	408	LYS
1	D	3	LYS
1	D	82	ARG
1	D	87	LYS
1	D	93	LYS
1	D	162	THR
1	D	184	ASN
1	D	312	VAL
1	D	320	GLN
1	D	348	ASN
1	D	413	LYS

Sometimes sidechains can be flipped to improve hydrogen bonding and reduce clashes. All (4) such sidechains are listed below:

Mol	Chain	Res	Type
1	A	90	GLN
1	A	101	ASN
1	B	14	GLN
1	B	101	ASN



### 5.3.3 RNA [i](#)

There are no RNA molecules in this entry.

## 5.4 Non-standard residues in protein, DNA, RNA chains [i](#)

There are no non-standard protein/DNA/RNA residues in this entry.

## 5.5 Carbohydrates [i](#)

There are no monosaccharides in this entry.

## 5.6 Ligand geometry [i](#)

Of 17 ligands modelled in this entry, 8 are monoatomic - leaving 9 for Mogul analysis.

In the following table, the Counts columns list the number of bonds (or angles) for which Mogul statistics could be retrieved, the number of bonds (or angles) that are observed in the model and the number of bonds (or angles) that are defined in the Chemical Component Dictionary. The Link column lists molecule types, if any, to which the group is linked. The Z score for a bond length (or angle) is the number of standard deviations the observed value is removed from the expected value. A bond length (or angle) with  $|Z| > 2$  is considered an outlier worth inspection. RMSZ is the root-mean-square of all Z scores of the bond lengths (or angles).

Mol	Type	Chain	Res	Link	Bond lengths			Bond angles		
					Counts	RMSZ	# Z  > 2	Counts	RMSZ	# Z  > 2
2	NAP	A	501	-	45,52,52	0.91	1 (2%)	56,80,80	1.21	5 (8%)
6	ICT	C	501	4	12,12,12	1.53	2 (16%)	13,16,16	1.46	3 (23%)
2	NAP	D	501	-	45,52,52	0.89	1 (2%)	56,80,80	1.03	2 (3%)
5	GOL	D	502	-	5,5,5	0.93	0	5,5,5	0.97	0
5	GOL	B	501	-	5,5,5	0.91	0	5,5,5	1.01	0
2	NAP	C	503	-	45,52,52	2.29	16 (35%)	56,80,80	1.11	7 (12%)
5	GOL	D	503	-	5,5,5	0.91	0	5,5,5	0.98	0
2	NAP	B	502	-	45,52,52	0.79	1 (2%)	56,80,80	1.04	4 (7%)
5	GOL	C	502	-	5,5,5	0.91	0	5,5,5	0.99	0

In the following table, the Chirals column lists the number of chiral outliers, the number of chiral centers analysed, the number of these observed in the model and the number defined in the Chemical Component Dictionary. Similar counts are reported in the Torsion and Rings columns. '-' means no outliers of that kind were identified.

Mol	Type	Chain	Res	Link	Chirals	Torsions	Rings
2	NAP	A	501	-	-	12/31/67/67	0/5/5/5
6	ICT	C	501	4	-	8/16/16/16	-
2	NAP	D	501	-	-	13/31/67/67	0/5/5/5
5	GOL	D	502	-	-	0/4/4/4	-
5	GOL	B	501	-	-	0/4/4/4	-
2	NAP	C	503	-	-	8/31/67/67	0/5/5/5
5	GOL	D	503	-	-	2/4/4/4	-
2	NAP	B	502	-	-	17/31/67/67	0/5/5/5
5	GOL	C	502	-	-	2/4/4/4	-

All (21) bond length outliers are listed below:

Mol	Chain	Res	Type	Atoms	Z	Observed(Å)	Ideal(Å)
2	C	503	NAP	C7N-N7N	6.62	1.45	1.33
2	C	503	NAP	C2N-N1N	6.08	1.42	1.35
2	C	503	NAP	O4D-C1D	4.61	1.47	1.41
2	C	503	NAP	O4B-C1B	4.54	1.47	1.41
2	C	503	NAP	P2B-O2B	3.30	1.65	1.59
2	C	503	NAP	C6A-N6A	3.14	1.45	1.34
6	C	501	ICT	C2-C1	2.82	1.56	1.52
2	C	503	NAP	C2D-C1D	-2.73	1.49	1.53
2	C	503	NAP	O7N-C7N	-2.67	1.19	1.24
2	C	503	NAP	C6N-N1N	2.57	1.41	1.35
2	C	503	NAP	C3B-C2B	-2.36	1.47	1.52
2	C	503	NAP	C5A-N7A	2.30	1.48	1.39
2	D	501	NAP	C5A-C4A	2.22	1.46	1.40
6	C	501	ICT	C3-C6	2.18	1.55	1.51
2	A	501	NAP	C5A-C4A	2.17	1.46	1.40
2	C	503	NAP	P2B-O3X	-2.17	1.46	1.54
2	B	502	NAP	C5A-C4A	2.16	1.46	1.40
2	C	503	NAP	P2B-O2X	-2.14	1.46	1.54
2	C	503	NAP	C4A-N3A	-2.08	1.32	1.35
2	C	503	NAP	C2D-C3D	-2.05	1.47	1.53
2	C	503	NAP	C2A-N3A	2.01	1.35	1.32

All (21) bond angle outliers are listed below:

Mol	Chain	Res	Type	Atoms	Z	Observed(°)	Ideal(°)
2	B	502	NAP	N3A-C2A-N1A	-3.44	123.30	128.68
2	A	501	NAP	C5B-C4B-C3B	-3.23	103.08	115.18
2	A	501	NAP	N3A-C2A-N1A	-3.04	123.93	128.68

*Continued on next page...*

*Continued from previous page...*

Mol	Chain	Res	Type	Atoms	Z	Observed(°)	Ideal(°)
2	D	501	NAP	N3A-C2A-N1A	-3.02	123.96	128.68
2	C	503	NAP	C3D-C2D-C1D	2.75	105.11	100.98
6	C	501	ICT	O2-C1-C2	2.74	120.69	113.27
2	A	501	NAP	PN-O3-PA	-2.71	123.51	132.83
2	C	503	NAP	PN-O3-PA	-2.59	123.93	132.83
2	C	503	NAP	C6N-N1N-C2N	-2.52	119.67	121.97
2	B	502	NAP	C4A-C5A-N7A	-2.27	107.04	109.40
2	D	501	NAP	C4A-C5A-N7A	-2.22	107.09	109.40
2	B	502	NAP	C3D-C2D-C1D	2.16	104.24	100.98
2	B	502	NAP	PN-O3-PA	-2.13	125.51	132.83
6	C	501	ICT	O5-C6-C3	-2.12	117.62	122.95
2	A	501	NAP	O3B-C3B-C2B	2.11	117.14	111.17
2	C	503	NAP	O2N-PN-O1N	-2.10	101.86	112.24
2	C	503	NAP	O2A-PA-O1A	-2.10	101.87	112.24
2	C	503	NAP	C2D-C3D-C4D	2.08	106.69	102.64
6	C	501	ICT	O1-C1-C2	-2.05	116.23	121.63
2	A	501	NAP	C5N-C4N-C3N	-2.03	117.94	120.34
2	C	503	NAP	C3N-C7N-N7N	2.01	120.17	117.75

There are no chirality outliers.

All (62) torsion outliers are listed below:

Mol	Chain	Res	Type	Atoms
2	A	501	NAP	C5B-O5B-PA-O1A
2	A	501	NAP	C5B-O5B-PA-O3
2	A	501	NAP	C2B-O2B-P2B-O1X
2	A	501	NAP	O4D-C1D-N1N-C2N
2	A	501	NAP	O4D-C1D-N1N-C6N
2	A	501	NAP	C2D-C1D-N1N-C2N
2	A	501	NAP	C2D-C1D-N1N-C6N
2	B	502	NAP	C5B-O5B-PA-O2A
2	B	502	NAP	C5D-O5D-PN-O3
2	B	502	NAP	C5D-O5D-PN-O2N
2	B	502	NAP	O4D-C1D-N1N-C2N
2	B	502	NAP	O4D-C1D-N1N-C6N
2	B	502	NAP	C2D-C1D-N1N-C2N
2	B	502	NAP	C2D-C1D-N1N-C6N
2	C	503	NAP	C5B-O5B-PA-O3
2	C	503	NAP	O4D-C1D-N1N-C2N
2	C	503	NAP	O4D-C1D-N1N-C6N
2	C	503	NAP	C2D-C1D-N1N-C2N
2	C	503	NAP	C2D-C1D-N1N-C6N

*Continued on next page...*

*Continued from previous page...*

Mol	Chain	Res	Type	Atoms
2	D	501	NAP	PA-O3-PN-O5D
2	D	501	NAP	C5D-O5D-PN-O2N
2	D	501	NAP	O4D-C1D-N1N-C2N
2	D	501	NAP	O4D-C1D-N1N-C6N
2	D	501	NAP	C2D-C1D-N1N-C2N
2	D	501	NAP	C2D-C1D-N1N-C6N
5	C	502	GOL	O1-C1-C2-C3
6	C	501	ICT	C1-C2-C3-C4
6	C	501	ICT	O7-C2-C3-C4
6	C	501	ICT	O1-C1-C2-O7
6	C	501	ICT	O2-C1-C2-O7
6	C	501	ICT	O1-C1-C2-C3
6	C	501	ICT	O2-C1-C2-C3
5	C	502	GOL	O1-C1-C2-O2
2	B	502	NAP	O4D-C4D-C5D-O5D
2	B	502	NAP	C3D-C4D-C5D-O5D
5	D	503	GOL	C1-C2-C3-O3
6	C	501	ICT	C1-C2-C3-C6
2	A	501	NAP	PN-O3-PA-O5B
2	B	502	NAP	O4B-C4B-C5B-O5B
6	C	501	ICT	O7-C2-C3-C6
2	B	502	NAP	C5B-O5B-PA-O3
2	D	501	NAP	C5D-O5D-PN-O3
2	B	502	NAP	PN-O3-PA-O1A
2	B	502	NAP	C5D-O5D-PN-O1N
2	C	503	NAP	C5B-O5B-PA-O2A
2	C	503	NAP	C5D-O5D-PN-O2N
2	D	501	NAP	C5D-O5D-PN-O1N
2	D	501	NAP	O4B-C4B-C5B-O5B
2	B	502	NAP	PN-O3-PA-O2A
2	D	501	NAP	O4D-C4D-C5D-O5D
2	A	501	NAP	C3B-C2B-O2B-P2B
2	B	502	NAP	C3B-C4B-C5B-O5B
2	D	501	NAP	C3B-C4B-C5B-O5B
2	D	501	NAP	PN-O3-PA-O1A
2	D	501	NAP	C3D-C4D-C5D-O5D
5	D	503	GOL	O2-C2-C3-O3
2	A	501	NAP	C5D-O5D-PN-O3
2	C	503	NAP	C5D-O5D-PN-O3
2	B	502	NAP	PA-O3-PN-O2N
2	A	501	NAP	C1B-C2B-O2B-P2B
2	B	502	NAP	C5B-O5B-PA-O1A

*Continued on next page...*

*Continued from previous page...*

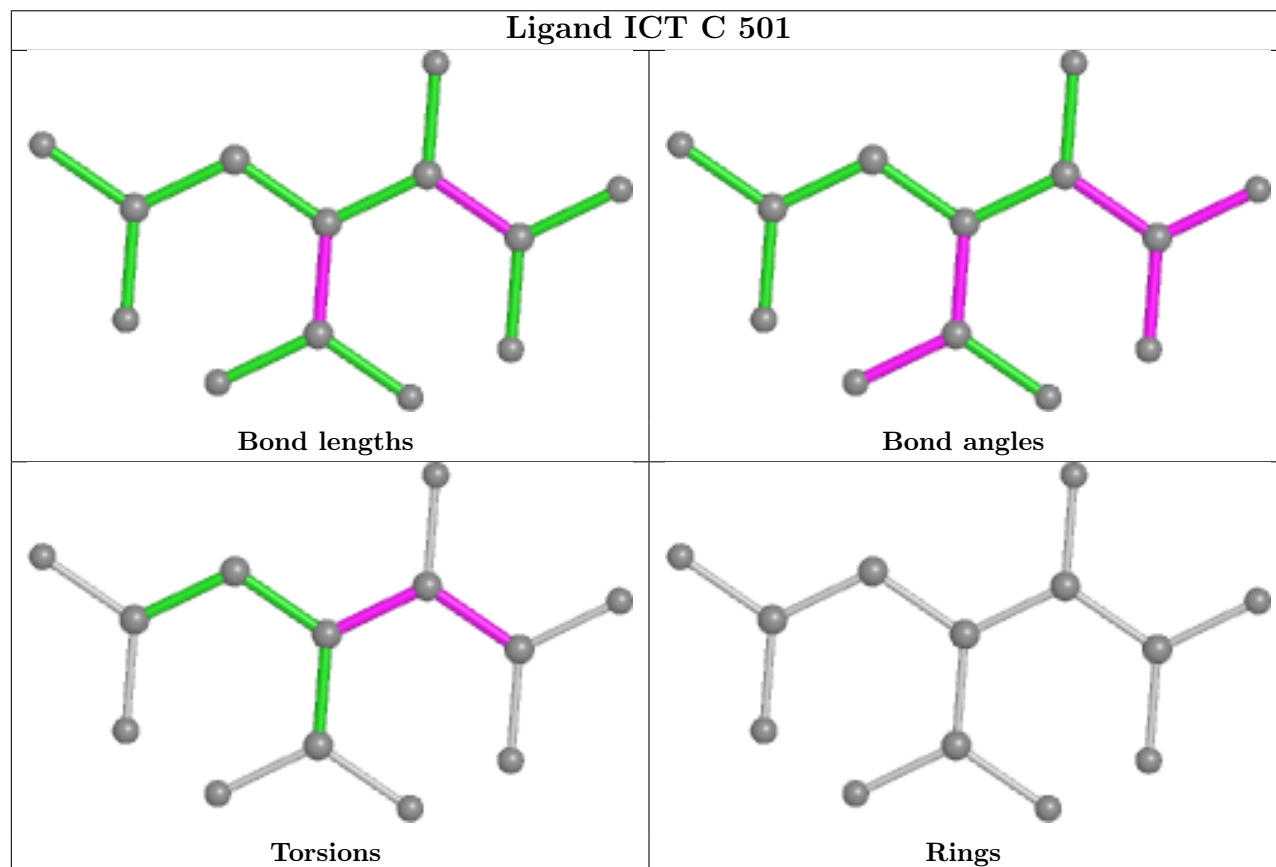
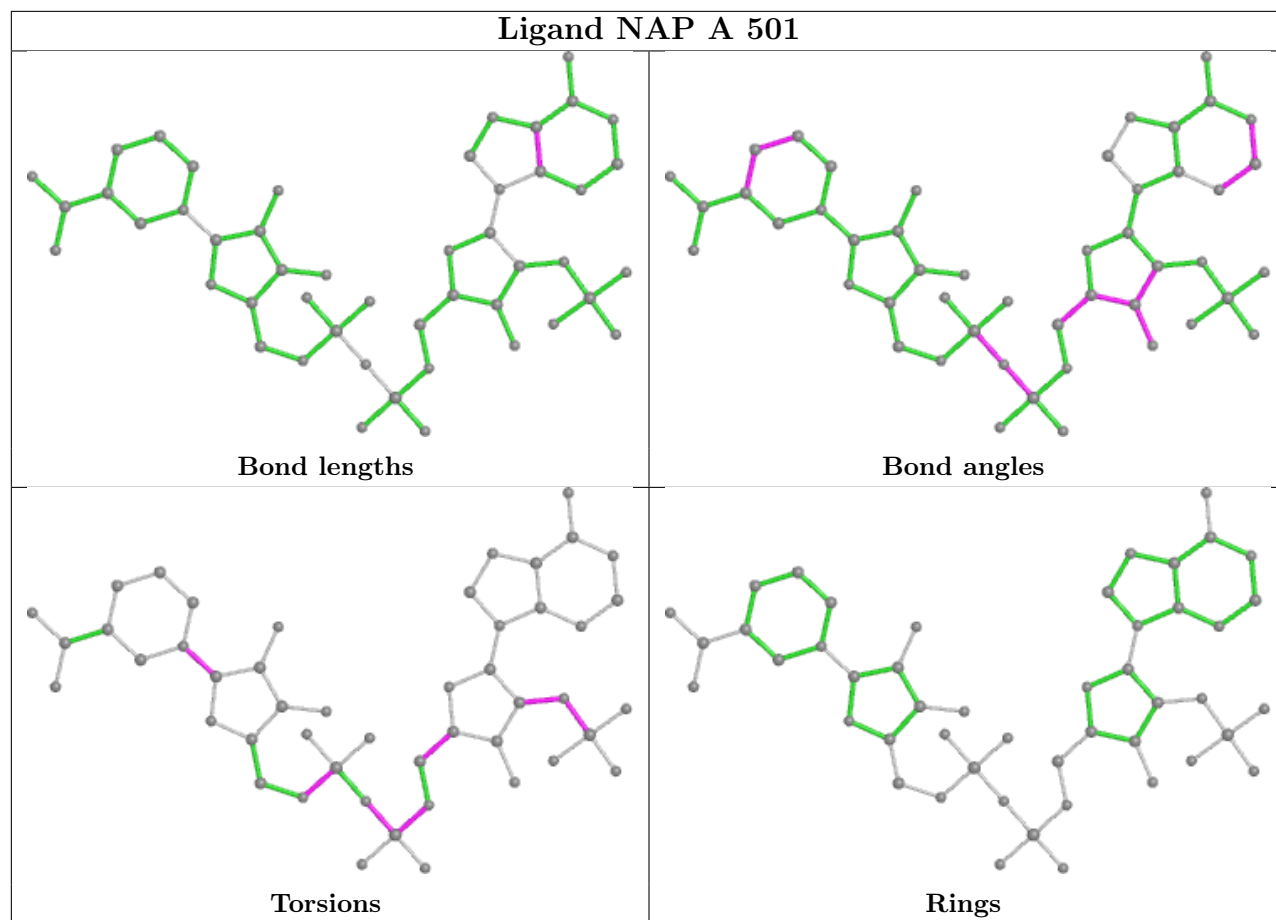
Mol	Chain	Res	Type	Atoms
2	A	501	NAP	C3B-C4B-C5B-O5B

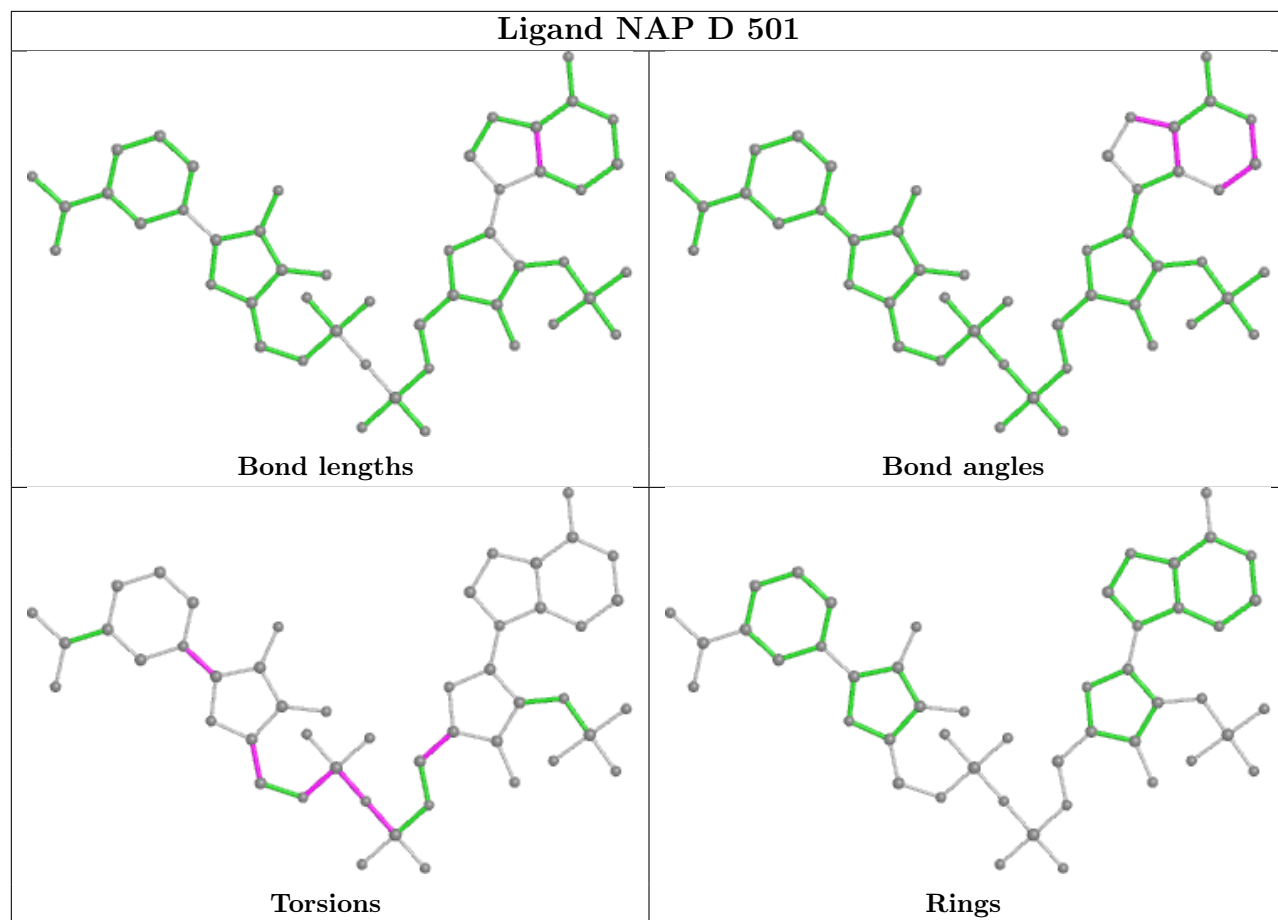
There are no ring outliers.

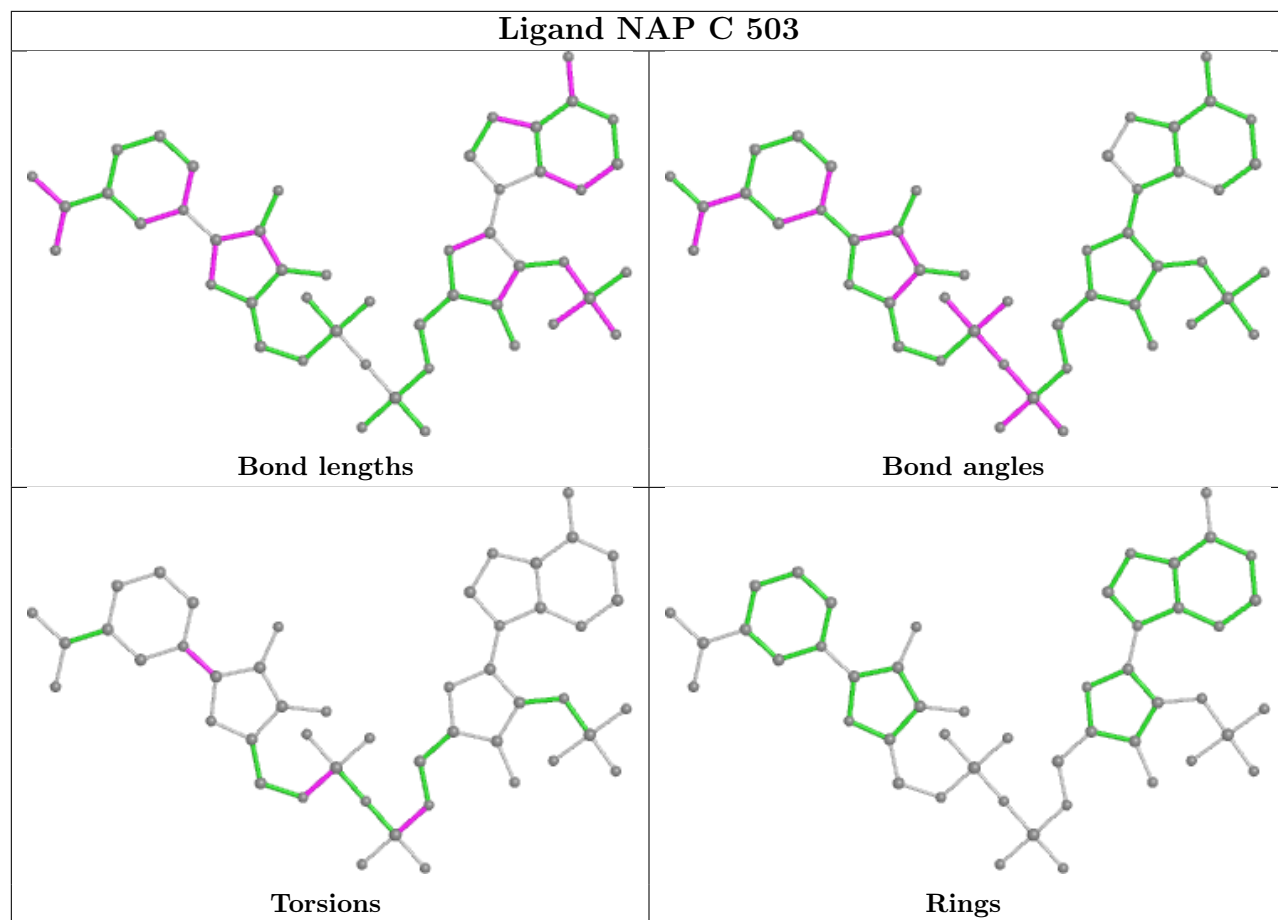
5 monomers are involved in 13 short contacts:

Mol	Chain	Res	Type	Clashes	Symm-Clashes
2	A	501	NAP	3	0
6	C	501	ICT	3	0
2	D	501	NAP	5	0
2	C	503	NAP	3	0
2	B	502	NAP	1	0

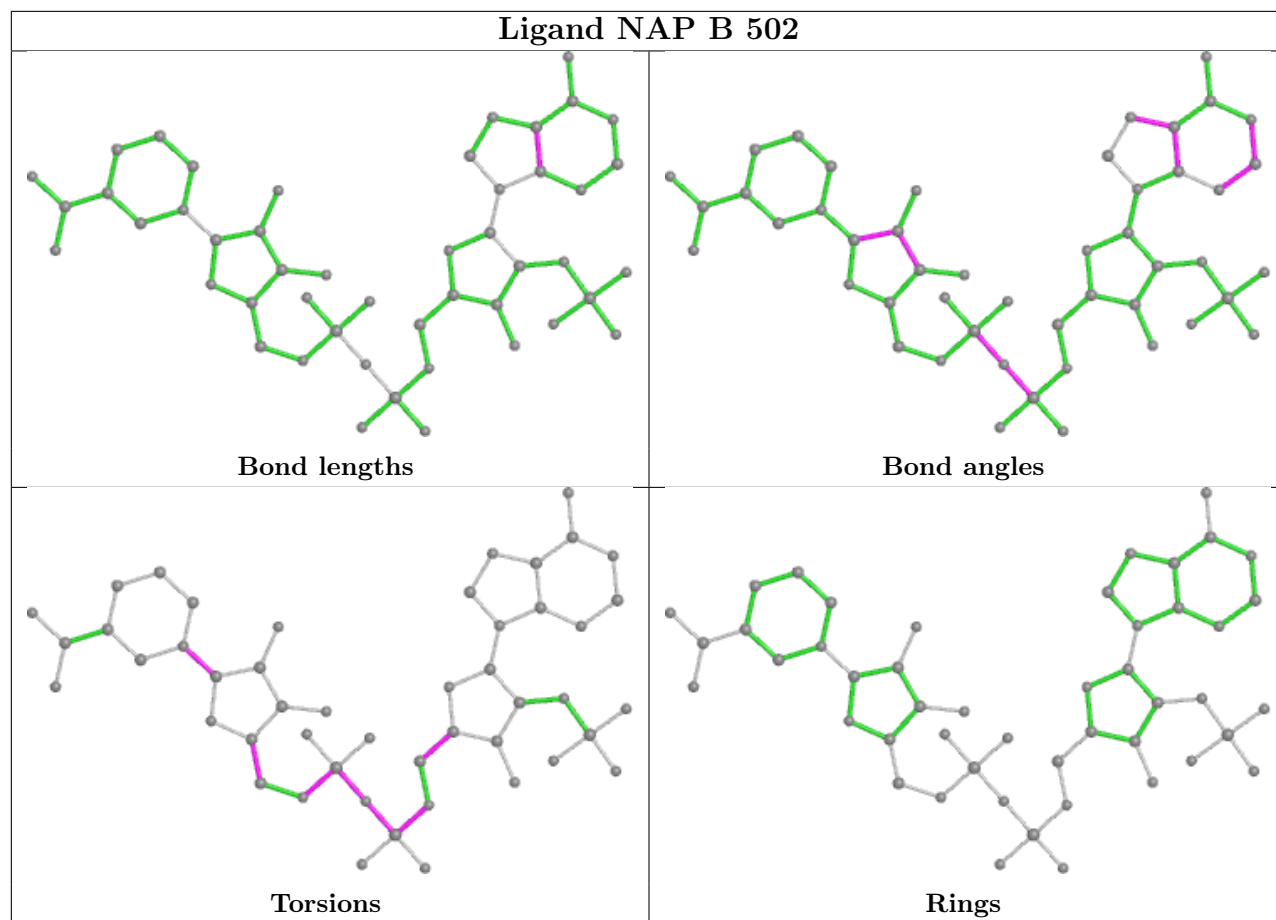
The following is a two-dimensional graphical depiction of Mogul quality analysis of bond lengths, bond angles, torsion angles, and ring geometry for all instances of the Ligand of Interest. In addition, ligands with molecular weight > 250 and outliers as shown on the validation Tables will also be included. For torsion angles, if less than 5% of the Mogul distribution of torsion angles is within 10 degrees of the torsion angle in question, then that torsion angle is considered an outlier. Any bond that is central to one or more torsion angles identified as an outlier by Mogul will be highlighted in the graph. For rings, the root-mean-square deviation (RMSD) between the ring in question and similar rings identified by Mogul is calculated over all ring torsion angles. If the average RMSD is greater than 60 degrees and the minimal RMSD between the ring in question and any Mogul-identified rings is also greater than 60 degrees, then that ring is considered an outlier. The outliers are highlighted in purple. The color gray indicates Mogul did not find sufficient equivalents in the CSD to analyse the geometry.











## 5.7 Other polymers [i](#)

There are no such residues in this entry.

## 5.8 Polymer linkage issues [i](#)

There are no chain breaks in this entry.

## 6 Fit of model and data

### 6.1 Protein, DNA and RNA chains

In the following table, the column labelled ‘#RSRZ > 2’ contains the number (and percentage) of RSRZ outliers, followed by percent RSRZ outliers for the chain as percentile scores relative to all X-ray entries and entries of similar resolution. The OWAB column contains the minimum, median, 95<sup>th</sup> percentile and maximum values of the occupancy-weighted average B-factor per residue. The column labelled ‘Q < 0.9’ lists the number of (and percentage) of residues with an average occupancy less than 0.9.

Mol	Chain	Analysed	<RSRZ>	#RSRZ>2	OWAB(Å <sup>2</sup> )	Q<0.9
1	A	414/430 (96%)	0.10	9 (2%) 62 63	13, 21, 38, 63	0
1	B	411/430 (95%)	0.12	9 (2%) 62 63	13, 24, 42, 58	0
1	C	414/430 (96%)	0.28	14 (3%) 45 48	15, 28, 47, 62	0
1	D	411/430 (95%)	0.12	9 (2%) 62 63	14, 22, 36, 68	0
All	All	1650/1720 (95%)	0.16	41 (2%) 57 59	13, 24, 43, 68	0

All (41) RSRZ outliers are listed below:

Mol	Chain	Res	Type	RSRZ
1	D	3	LYS	4.2
1	D	413	LYS	3.8
1	A	2	SER	3.8
1	D	410	ALA	3.1
1	D	412	ALA	3.0
1	A	162	THR	3.0
1	D	308	ALA	2.8
1	C	385	ASN	2.7
1	A	0	HIS	2.6
1	C	84	GLU	2.6
1	D	411	GLN	2.6
1	C	407	ILE	2.6
1	C	381	LYS	2.6
1	A	413	LYS	2.5
1	B	86	PHE	2.5
1	C	205	TRP	2.5
1	A	233	LYS	2.5
1	B	413	LYS	2.4
1	C	403	GLU	2.4
1	A	89	LYS	2.3
1	C	115	LYS	2.3

*Continued on next page...*

*Continued from previous page...*

Mol	Chain	Res	Type	RSRZ
1	B	314	ARG	2.3
1	D	160	ASP	2.3
1	B	321	LYS	2.3
1	B	412	ALA	2.2
1	C	387	GLN	2.2
1	D	162	THR	2.2
1	C	308	ALA	2.2
1	D	87	LYS	2.1
1	C	380	ILE	2.1
1	C	384	PRO	2.1
1	B	84	GLU	2.1
1	A	348	ASN	2.1
1	A	1	MET	2.1
1	A	3	LYS	2.1
1	C	87	LYS	2.1
1	B	387	GLN	2.0
1	B	411	GLN	2.0
1	C	390	ASP	2.0
1	B	276	VAL	2.0
1	C	51	ALA	2.0

## 6.2 Non-standard residues in protein, DNA, RNA chains [i](#)

There are no non-standard protein/DNA/RNA residues in this entry.

## 6.3 Carbohydrates [i](#)

There are no monosaccharides in this entry.

## 6.4 Ligands [i](#)

In the following table, the Atoms column lists the number of modelled atoms in the group and the number defined in the chemical component dictionary. The B-factors column lists the minimum, median, 95<sup>th</sup> percentile and maximum values of B factors of atoms in the group. The column labelled 'Q< 0.9' lists the number of atoms with occupancy less than 0.9.

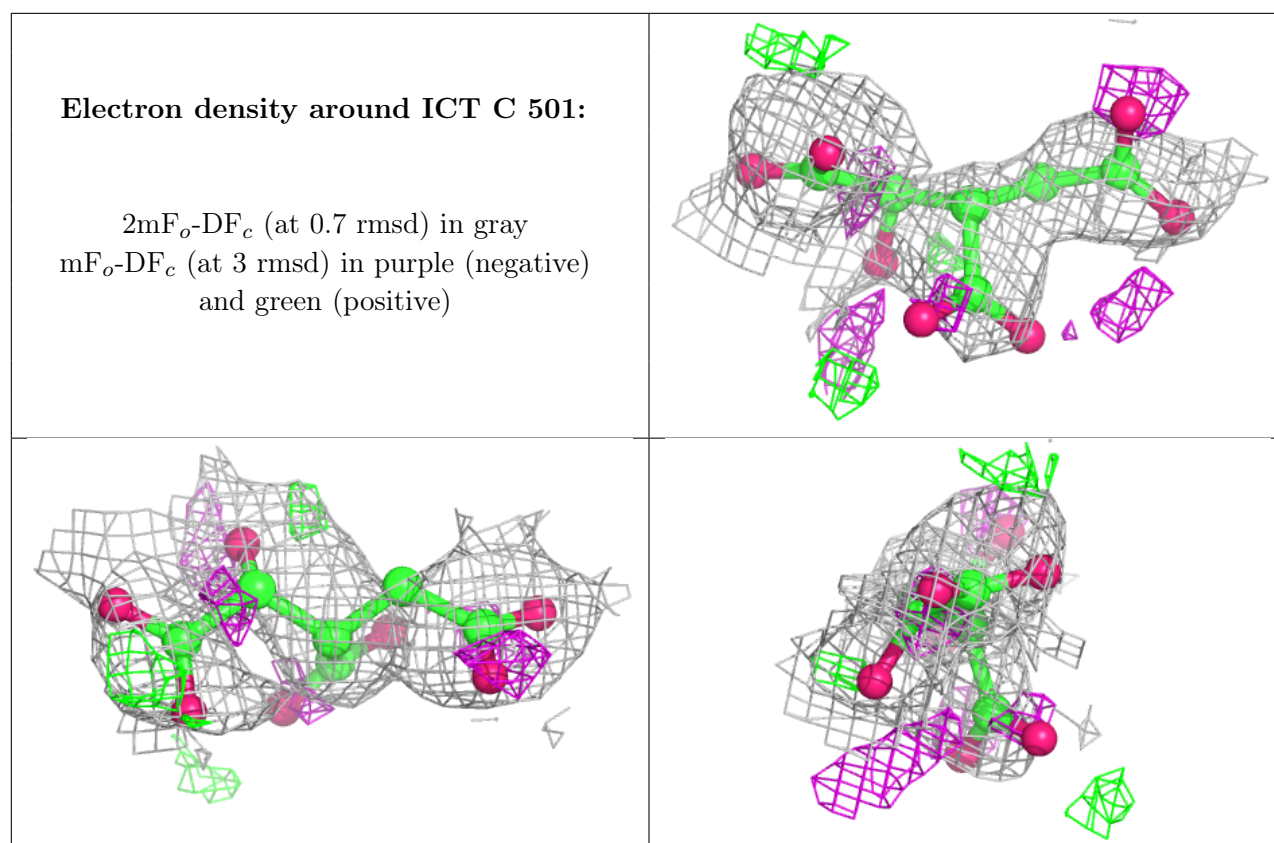
Mol	Type	Chain	Res	Atoms	RSCC	RSR	B-factors(Å <sup>2</sup> )	Q<0.9
6	ICT	C	501	13/13	0.81	0.25	37,46,55,57	0
3	IOD	C	504	1/1	0.85	0.09	123,123,123,123	0
5	GOL	D	503	6/6	0.86	0.27	43,45,47,48	0

*Continued on next page...*

Continued from previous page...

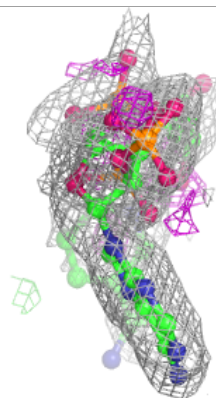
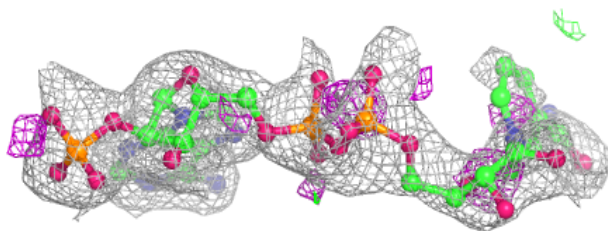
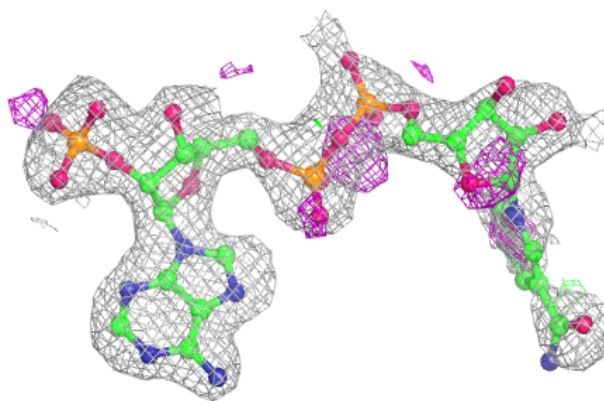
Mol	Type	Chain	Res	Atoms	RSCC	RSR	B-factors( $\text{\AA}^2$ )	Q<0.9
5	GOL	D	502	6/6	0.88	0.21	40,45,54,56	0
2	NAP	B	502	48/48	0.88	0.20	19,49,67,93	0
5	GOL	C	502	6/6	0.88	0.16	33,45,49,52	0
2	NAP	D	501	48/48	0.90	0.21	20,41,68,86	0
5	GOL	B	501	6/6	0.90	0.21	36,39,41,42	0
4	CA	D	505	1/1	0.91	0.16	36,36,36,36	0
4	CA	A	503	1/1	0.94	0.11	34,34,34,34	0
4	CA	B	504	1/1	0.94	0.11	36,36,36,36	0
2	NAP	A	501	48/48	0.95	0.14	15,23,30,34	0
2	NAP	C	503	48/48	0.95	0.14	21,27,34,37	0
4	CA	C	505	1/1	0.97	0.10	32,32,32,32	0
3	IOD	A	502	1/1	0.99	0.05	54,54,54,54	0
3	IOD	D	504	1/1	1.00	0.07	22,22,22,22	0
3	IOD	B	503	1/1	1.00	0.08	33,33,33,33	0

The following is a graphical depiction of the model fit to experimental electron density of all instances of the Ligand of Interest. In addition, ligands with molecular weight > 250 and outliers as shown on the geometry validation Tables will also be included. Each fit is shown from different orientation to approximate a three-dimensional view.

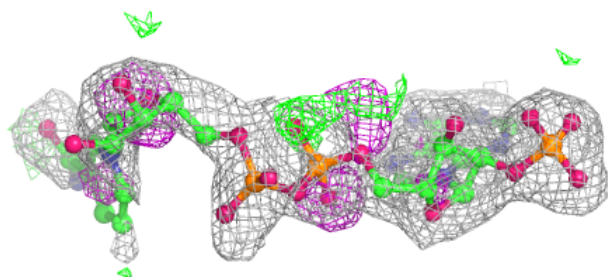
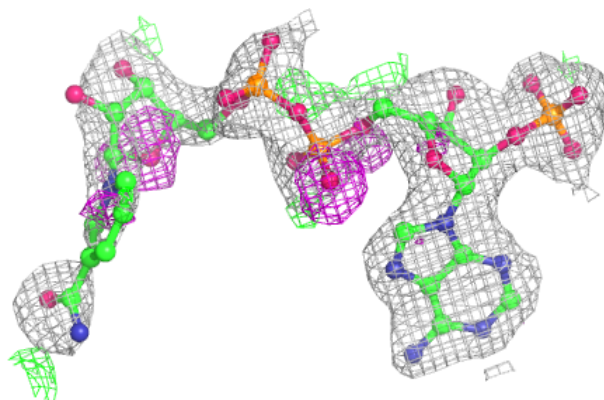


**Electron density around NAP B 502:**

$2mF_o-DF_c$  (at 0.7 rmsd) in gray  
 $mF_o-DF_c$  (at 3 rmsd) in purple (negative)  
and green (positive)

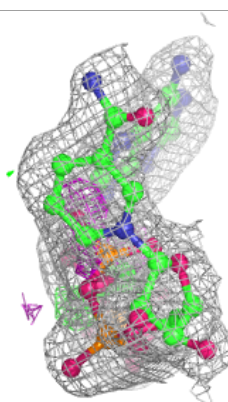
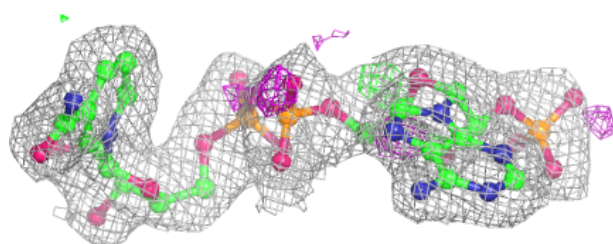
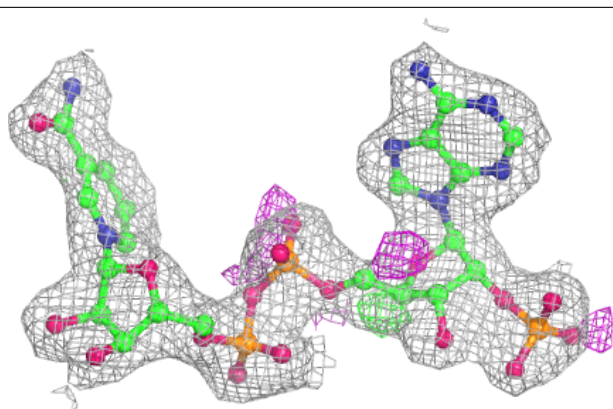
**Electron density around NAP D 501:**

$2mF_o-DF_c$  (at 0.7 rmsd) in gray  
 $mF_o-DF_c$  (at 3 rmsd) in purple (negative)  
and green (positive)

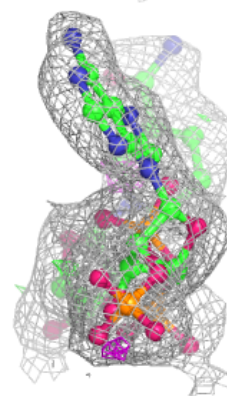
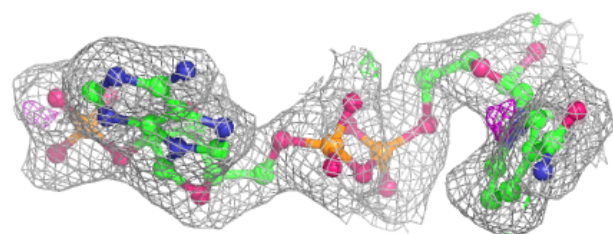
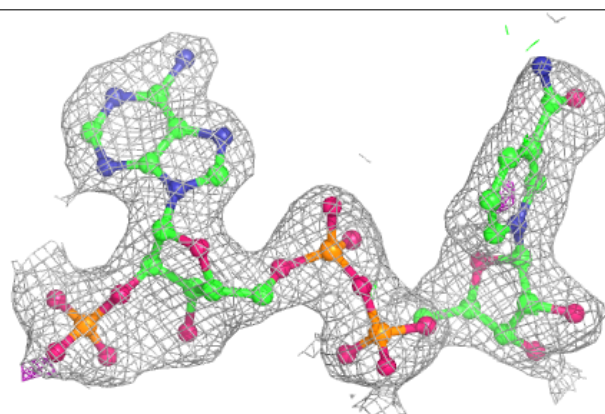


**Electron density around NAP A 501:**

$2mF_o-DF_c$  (at 0.7 rmsd) in gray  
 $mF_o-DF_c$  (at 3 rmsd) in purple (negative)  
and green (positive)

**Electron density around NAP C 503:**

$2mF_o-DF_c$  (at 0.7 rmsd) in gray  
 $mF_o-DF_c$  (at 3 rmsd) in purple (negative)  
and green (positive)



## 6.5 Other polymers [i](#)

There are no such residues in this entry.