



Full wwPDB X-ray Structure Validation Report ⓘ

May 27, 2024 – 06:44 PM EDT

PDB ID : 5VJZ
Title : Joint X-ray/neutron structure of aspartate aminotransferase with alpha-methyl-aspartate at pH 7.5
Authors : Dajnowicz, S.; Kovalevsky, A.Y.; Mueser, T.C.
Deposited on : 2017-04-20
Resolution : 2.00 Å(reported)

This is a Full wwPDB X-ray Structure Validation Report for a publicly released PDB entry.

We welcome your comments at validation@mail.wwpdb.org

A user guide is available at

<https://www.wwpdb.org/validation/2017/XrayValidationReportHelp>

with specific help available everywhere you see the ⓘ symbol.

The types of validation reports are described at

<http://www.wwpdb.org/validation/2017/FAQs#types>.

The following versions of software and data (see [references ⓘ](#)) were used in the production of this report:

MolProbity : 4.02b-467
Mogul : 1.8.5 (274361), CSD as541be (2020)
Xtrriage (Phenix) : 1.13
EDS : **FAILED**
Percentile statistics : 20191225.v01 (using entries in the PDB archive December 25th 2019)
Ideal geometry (proteins) : Engh & Huber (2001)
Ideal geometry (DNA, RNA) : Parkinson et al. (1996)
Validation Pipeline (wwPDB-VP) : 2.36.2

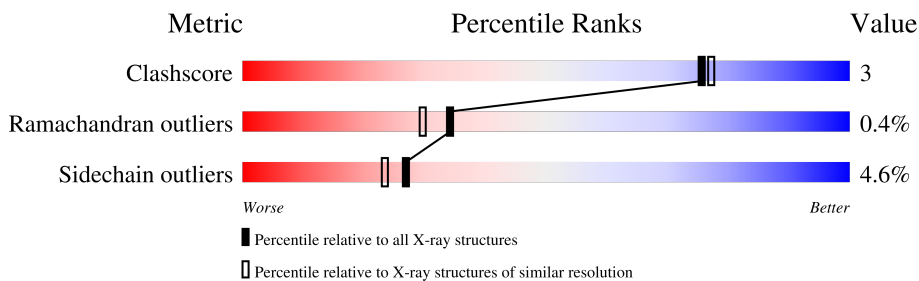
1 Overall quality at a glance

The following experimental techniques were used to determine the structure:

NEUTRON DIFFRACTION, X-RAY DIFFRACTION

The reported resolution of this entry is 2.00 Å.

Percentile scores (ranging between 0-100) for global validation metrics of the entry are shown in the following graphic. The table shows the number of entries on which the scores are based.



Metric	Whole archive (#Entries)	Similar resolution (#Entries, resolution range(Å))
Clashscore	141614	9178 (2.00-2.00)
Ramachandran outliers	138981	9054 (2.00-2.00)
Sidechain outliers	138945	9053 (2.00-2.00)

The table below summarises the geometric issues observed across the polymeric chains and their fit to the electron density. The red, orange, yellow and green segments of the lower bar indicate the fraction of residues that contain outliers for ≥ 3 , 2, 1 and 0 types of geometric quality criteria respectively. A grey segment represents the fraction of residues that are not modelled. The numeric value for each fraction is indicated below the corresponding segment, with a dot representing fractions $\leq 5\%$.

Note EDS failed to run properly.

Mol	Chain	Length	Quality of chain
1	A	412	
2	B	412	

2 Entry composition [i](#)

There are 4 unique types of molecules in this entry. The entry contains 18306 atoms, of which 4874 are hydrogens and 6606 are deuteriums.

In the tables below, the ZeroOcc column contains the number of atoms modelled with zero occupancy, the AltConf column contains the number of residues with at least one atom in alternate conformation and the Trace column contains the number of residues modelled with at most 2 atoms.

- Molecule 1 is a protein called Aspartate aminotransferase, cytoplasmic.

Mol	Chain	Residues	Atoms								ZeroOcc	AltConf	Trace
			Total	C	D	H	N	O	S				
1	A	412	8703	2087	3034	2395	574	602	11	0	412	0	

There are 3 discrepancies between the modelled and reference sequences:

Chain	Residue	Modelled	Actual	Comment	Reference
A	63	ASN	ASP	conflict	UNP P00503
A	288	GLN	GLU	conflict	UNP P00503
A	376	GLN	GLU	conflict	UNP P00503

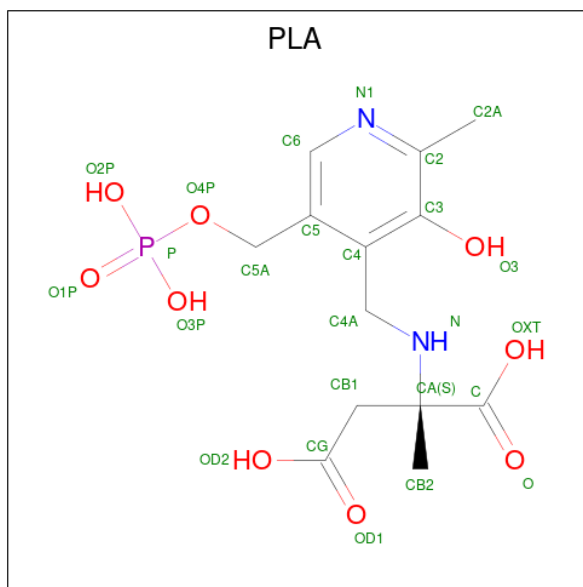
- Molecule 2 is a protein called Aspartate aminotransferase, cytoplasmic.

Mol	Chain	Residues	Atoms								ZeroOcc	AltConf	Trace
			Total	C	D	H	N	O	P	S			
2	B	412	8845	2095	3090	2466	575	607	1	11	0	411	0

There are 3 discrepancies between the modelled and reference sequences:

Chain	Residue	Modelled	Actual	Comment	Reference
B	63	ASN	ASP	conflict	UNP P00503
B	288	GLN	GLU	conflict	UNP P00503
B	376	GLN	GLU	conflict	UNP P00503

- Molecule 3 is 2-[(3-HYDROXY-2-METHYL-5-PHOSPHONOXYMETHYL-PYRIDIN-4-YLMETHYL)-AMINO]-2-METHYL-SUCCINIC ACID (three-letter code: PLA) (formula: C₁₃H₁₉N₂O₉P).



Mol	Chain	Residues	Atoms					ZeroOcc	AltConf		
			Total	C	D	H	N			O	P
3	A	1	44	13	6	13	2	9	1	0	1

- Molecule 4 is water.

Mol	Chain	Residues	Atoms			ZeroOcc	AltConf
			Total	D	O		
4	A	109	327	218	109	0	0
4	B	129	387	258	129	0	0

3 Residue-property plots [i](#)

These plots are drawn for all protein, RNA, DNA and oligosaccharide chains in the entry. The first graphic for a chain summarises the proportions of the various outlier classes displayed in the second graphic. The second graphic shows the sequence view annotated by issues in geometry. Residues are color-coded according to the number of geometric quality criteria for which they contain at least one outlier: green = 0, yellow = 1, orange = 2 and red = 3 or more. Stretches of 2 or more consecutive residues without any outlier are shown as a green connector. Residues present in the sample, but not in the model, are shown in grey.

Note EDS failed to run properly.

- Molecule 1: Aspartate aminotransferase, cytoplasmic

Chain A:  94% 5%



- Molecule 2: Aspartate aminotransferase, cytoplasmic

Chain B:  97%



4 Data and refinement statistics i

EDS failed to run properly - this section is therefore incomplete.

Property	Value	Source
Space group	P 21 21 21	Depositor
Cell constants a, b, c, α , β , γ	55.53Å 124.99Å 130.44Å 90.00° 90.00° 90.00°	Depositor
Resolution (Å)	39.56 – 2.00	Depositor
% Data completeness (in resolution range)	89.2 (39.56-2.00)	Depositor
R_{merge}	0.03	Depositor
R_{sym}	(Not available)	Depositor
$\langle I/\sigma(I) \rangle$ ¹	5.23 (at 2.00Å)	Xtrriage
Refinement program	nCNS 1.0.0	Depositor
R, R_{free}	0.197 , 0.221	Depositor
Wilson B-factor (Å ²)	21.1	Xtrriage
Anisotropy	0.212	Xtrriage
L-test for twinning ²	$\langle L \rangle = 0.49$, $\langle L^2 \rangle = 0.32$	Xtrriage
Estimated twinning fraction	0.012 for -h,l,k	Xtrriage
Total number of atoms	18306	wwPDB-VP
Average B, all atoms (Å ²)	28.0	wwPDB-VP

Xtrriage's analysis on translational NCS is as follows: *The largest off-origin peak in the Patterson function is 4.37% of the height of the origin peak. No significant pseudotranslation is detected.*

¹Intensities estimated from amplitudes.

²Theoretical values of $\langle |L| \rangle$, $\langle L^2 \rangle$ for acentric reflections are 0.5, 0.333 respectively for untwinned datasets, and 0.375, 0.2 for perfectly twinned datasets.

5 Model quality [i](#)

5.1 Standard geometry [i](#)

Bond lengths and bond angles in the following residue types are not validated in this section: LLP, DOD, PLA

The Z score for a bond length (or angle) is the number of standard deviations the observed value is removed from the expected value. A bond length (or angle) with $|Z| > 5$ is considered an outlier worth inspection. RMSZ is the root-mean-square of all Z scores of the bond lengths (or angles).

Mol	Chain	Bond lengths		Bond angles	
		RMSZ	# Z >5	RMSZ	# Z >5
1	A	0.40	0/6716	0.61	0/9124
2	B	0.43	0/6692	0.61	0/9091
All	All	0.41	0/13408	0.61	0/18215

Chiral center outliers are detected by calculating the chiral volume of a chiral center and verifying if the center is modelled as a planar moiety or with the opposite hand. A planarity outlier is detected by checking planarity of atoms in a peptide group, atoms in a mainchain group or atoms of a sidechain that are expected to be planar.

Mol	Chain	#Chirality outliers	#Planarity outliers
1	A	0	2

There are no bond length outliers.

There are no bond angle outliers.

There are no chirality outliers.

All (2) planarity outliers are listed below:

Mol	Chain	Res	Type	Group
1	A	31[A]	ARG	Sidechain
1	A	31[B]	ARG	Sidechain

5.2 Too-close contacts [i](#)

In the following table, the Non-H and H(model) columns list the number of non-hydrogen atoms and hydrogen atoms in the chain respectively. The H(added) column lists the number of hydrogen atoms added and optimized by MolProbity. The Clashes column lists the number of clashes within the asymmetric unit, whereas Symm-Clashes lists symmetry-related clashes.

Mol	Chain	Non-H	H(model)	H(added)	Clashes	Symm-Clashes
1	A	6308	2395	0	0	0
2	B	6379	2466	3	0	0
3	A	31	13	0	0	0
4	A	327	0	0	2	1
4	B	387	0	0	1	1
All	All	13432	4874	3	3	1

The all-atom clashscore is defined as the number of clashes found per 1000 atoms (including hydrogen atoms). The all-atom clashscore for this structure is 3.

All (3) close contacts within the same asymmetric unit are listed below, sorted by their clash magnitude.

Atom-1	Atom-2	Interatomic distance (Å)	Clash overlap (Å)
--------	--------	--------------------------	-------------------

All (1) symmetry-related close contacts are listed below. The label for Atom-2 includes the symmetry operator and encoded unit-cell translations to be applied.

Atom-1	Atom-2	Interatomic distance (Å)	Clash overlap (Å)
4:A:705:DOD:D1	4:B:627:DOD:O[3_545]	1.49	0.71

5.3 Torsion angles [i](#)

5.3.1 Protein backbone [i](#)

In the following table, the Percentiles column shows the percent Ramachandran outliers of the chain as a percentile score with respect to all X-ray entries followed by that with respect to entries of similar resolution.

The Analysed column shows the number of residues for which the backbone conformation was analysed, and the total number of residues.

Mol	Chain	Analysed	Favoured	Allowed	Outliers	Percentiles
1	A	820/412 (199%)	764 (93%)	50 (6%)	6 (1%)	22 16
2	B	817/412 (198%)	797 (98%)	20 (2%)	0	100 100
All	All	1637/824 (199%)	1561 (95%)	70 (4%)	6 (0%)	34 30

All (6) Ramachandran outliers are listed below:

Mol	Chain	Res	Type
1	A	165[A]	LYS
1	A	165[B]	LYS
1	A	407[A]	ALA
1	A	407[B]	ALA
1	A	408[A]	VAL
1	A	408[B]	VAL

5.3.2 Protein sidechains [i](#)

In the following table, the Percentiles column shows the percent sidechain outliers of the chain as a percentile score with respect to all X-ray entries followed by that with respect to entries of similar resolution.

The Analysed column shows the number of residues for which the sidechain conformation was analysed, and the total number of residues.

Mol	Chain	Analysed	Rotameric	Outliers	Percentiles	
1	A	704/352 (200%)	664 (94%)	40 (6%)	20	16
2	B	702/351 (200%)	678 (97%)	24 (3%)	37	36
All	All	1406/703 (200%)	1342 (95%)	64 (5%)	27	23

All (64) residues with a non-rotameric sidechain are listed below:

Mol	Chain	Res	Type
1	A	19[A]	LYS
1	A	19[B]	LYS
1	A	25[A]	ARG
1	A	25[B]	ARG
1	A	31[A]	ARG
1	A	31[B]	ARG
1	A	33[A]	VAL
1	A	33[B]	VAL
1	A	54[A]	ARG
1	A	54[B]	ARG
1	A	59[A]	ARG
1	A	59[B]	ARG
1	A	90[A]	ASP
1	A	90[B]	ASP
1	A	98[A]	LYS
1	A	98[B]	LYS
1	A	126[A]	THR
1	A	126[B]	THR

Continued on next page...

Continued from previous page...

Mol	Chain	Res	Type
1	A	141[A]	GLU
1	A	141[B]	GLU
1	A	153[A]	LYS
1	A	153[B]	LYS
1	A	166[A]	ARG
1	A	166[B]	ARG
1	A	219[A]	PRO
1	A	219[B]	PRO
1	A	220[A]	PHE
1	A	220[B]	PHE
1	A	258[A]	LYS
1	A	258[B]	LYS
1	A	276[A]	GLU
1	A	276[B]	GLU
1	A	281[A]	LEU
1	A	281[B]	LEU
1	A	362[A]	PHE
1	A	362[B]	PHE
1	A	365[A]	LEU
1	A	365[B]	LEU
1	A	368[A]	LYS
1	A	368[B]	LYS
2	B	16[A]	LEU
2	B	16[B]	LEU
2	B	17[A]	VAL
2	B	17[B]	VAL
2	B	18[A]	PHE
2	B	18[B]	PHE
2	B	21[A]	ILE
2	B	21[B]	ILE
2	B	25[A]	ARG
2	B	25[B]	ARG
2	B	58[A]	GLN
2	B	58[B]	GLN
2	B	164[A]	GLU
2	B	164[B]	GLU
2	B	220[A]	PHE
2	B	220[B]	PHE
2	B	275[A]	LYS
2	B	275[B]	LYS
2	B	362[A]	PHE
2	B	362[B]	PHE

Continued on next page...

Continued from previous page...

Mol	Chain	Res	Type
2	B	368[A]	LYS
2	B	368[B]	LYS
2	B	412[A]	GLN
2	B	412[B]	GLN

Sometimes sidechains can be flipped to improve hydrogen bonding and reduce clashes. There are no such sidechains identified.

5.3.3 RNA [i](#)

There are no RNA molecules in this entry.

5.4 Non-standard residues in protein, DNA, RNA chains [i](#)

2 non-standard protein/DNA/RNA residues are modelled in this entry.

There are no bond length outliers.

There are no bond angle outliers.

There are no chirality outliers.

There are no torsion outliers.

There are no ring outliers.

No monomer is involved in short contacts.

5.5 Carbohydrates [i](#)

There are no monosaccharides in this entry.

5.6 Ligand geometry [i](#)

2 ligands are modelled in this entry.

There are no bond length outliers.

There are no bond angle outliers.

There are no chirality outliers.

There are no torsion outliers.

There are no ring outliers.

No monomer is involved in short contacts.

5.7 Other polymers [i](#)

There are no such residues in this entry.

5.8 Polymer linkage issues [i](#)

There are no chain breaks in this entry.

6 Fit of model and data

6.1 Protein, DNA and RNA chains

EDS failed to run properly - this section is therefore empty.

6.2 Non-standard residues in protein, DNA, RNA chains

EDS failed to run properly - this section is therefore empty.

6.3 Carbohydrates

EDS failed to run properly - this section is therefore empty.

6.4 Ligands

EDS failed to run properly - this section is therefore empty.

6.5 Other polymers

EDS failed to run properly - this section is therefore empty.