



Full wwPDB X-ray Structure Validation Report ⓘ

Nov 21, 2023 – 12:47 PM JST

PDB ID : 7VM8
Title : Crystal structure of the MtDMI1 gating ring
Authors : Huang, X.; Zhang, P.
Deposited on : 2021-10-08
Resolution : 3.03 Å(reported)

This is a Full wwPDB X-ray Structure Validation Report for a publicly released PDB entry.

We welcome your comments at validation@mail.wwpdb.org

A user guide is available at

<https://www.wwpdb.org/validation/2017/XrayValidationReportHelp>

with specific help available everywhere you see the ⓘ symbol.

The types of validation reports are described at

<http://www.wwpdb.org/validation/2017/FAQs#types>.

The following versions of software and data (see [references ⓘ](#)) were used in the production of this report:

MolProbity : 4.02b-467
Xtriage (Phenix) : 1.13
EDS : 2.36
Percentile statistics : 20191225.v01 (using entries in the PDB archive December 25th 2019)
Refmac : 5.8.0158
CCP4 : 7.0.044 (Gargrove)
Ideal geometry (proteins) : Engh & Huber (2001)
Ideal geometry (DNA, RNA) : Parkinson et al. (1996)
Validation Pipeline (wwPDB-VP) : 2.36

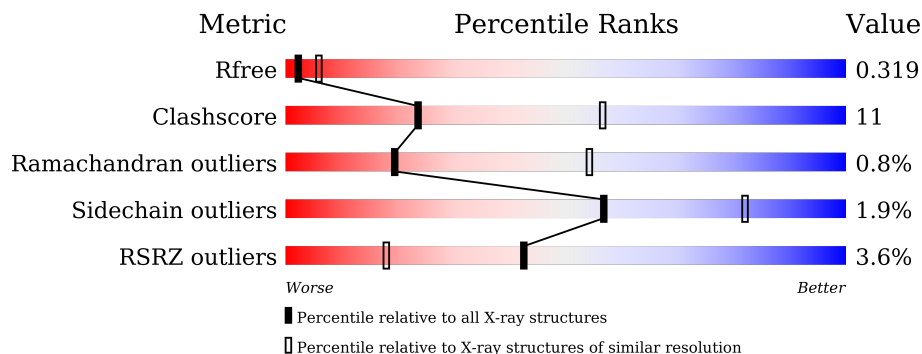
1 Overall quality at a glance

The following experimental techniques were used to determine the structure:

X-RAY DIFFRACTION

The reported resolution of this entry is 3.03 Å.

Percentile scores (ranging between 0-100) for global validation metrics of the entry are shown in the following graphic. The table shows the number of entries on which the scores are based.



Metric	Whole archive (#Entries)	Similar resolution (#Entries, resolution range(Å))
R_{free}	130704	2752 (3.08-3.00)
Clashscore	141614	3096 (3.08-3.00)
Ramachandran outliers	138981	2986 (3.08-3.00)
Sidechain outliers	138945	2988 (3.08-3.00)
RSRZ outliers	127900	2636 (3.08-3.00)

The table below summarises the geometric issues observed across the polymeric chains and their fit to the electron density. The red, orange, yellow and green segments of the lower bar indicate the fraction of residues that contain outliers for ≥ 3 , 2, 1 and 0 types of geometric quality criteria respectively. A grey segment represents the fraction of residues that are not modelled. The numeric value for each fraction is indicated below the corresponding segment, with a dot representing fractions $\leq 5\%$. The upper red bar (where present) indicates the fraction of residues that have poor fit to the electron density. The numeric value is given above the bar.

Mol	Chain	Length	Quality of chain
1	A	538	

2 Entry composition

There is only 1 type of molecule in this entry. The entry contains 3924 atoms, of which 0 are hydrogens and 0 are deuteriums.

In the tables below, the ZeroOcc column contains the number of atoms modelled with zero occupancy, the AltConf column contains the number of residues with at least one atom in alternate conformation and the Trace column contains the number of residues modelled with at most 2 atoms.

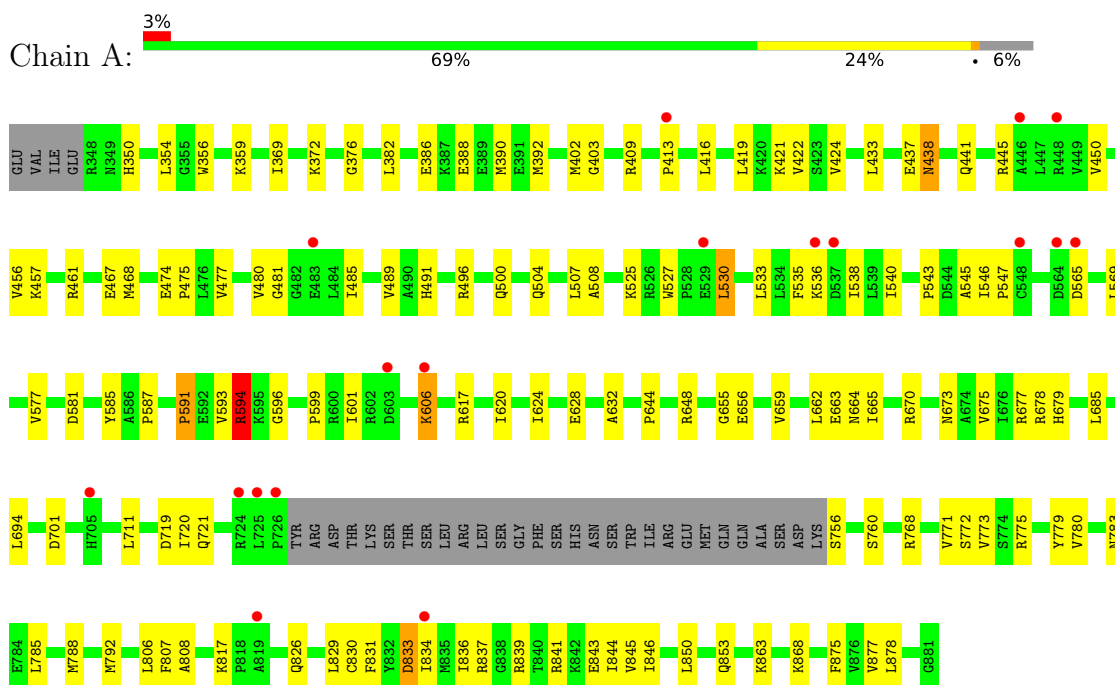
- Molecule 1 is a protein called Ion channel DMI1.

Mol	Chain	Residues	Atoms					ZeroOcc	AltConf	Trace
			Total	C	N	O	S			
1	A	505	3924	2492	662	751	19	0	2	0

3 Residue-property plots [i](#)

These plots are drawn for all protein, RNA, DNA and oligosaccharide chains in the entry. The first graphic for a chain summarises the proportions of the various outlier classes displayed in the second graphic. The second graphic shows the sequence view annotated by issues in geometry and electron density. Residues are color-coded according to the number of geometric quality criteria for which they contain at least one outlier: green = 0, yellow = 1, orange = 2 and red = 3 or more. A red dot above a residue indicates a poor fit to the electron density ($RSRZ > 2$). Stretches of 2 or more consecutive residues without any outlier are shown as a green connector. Residues present in the sample, but not in the model, are shown in grey.

- Molecule 1: Ion channel DMI1



4 Data and refinement statistics i

Property	Value	Source
Space group	I 4	Depositor
Cell constants a, b, c, α , β , γ	110.98Å 110.98Å 91.60Å 90.00° 90.00° 90.00°	Depositor
Resolution (Å)	45.80 – 3.03 45.80 – 3.03	Depositor EDS
% Data completeness (in resolution range)	69.5 (45.80-3.03) 90.4 (45.80-3.03)	Depositor EDS
R_{merge}	0.09	Depositor
R_{sym}	(Not available)	Depositor
$\langle I/\sigma(I) \rangle$ ¹	1.63 (at 3.01Å)	Xtrriage
Refinement program	PHENIX 1.14_3260	Depositor
R, R_{free}	0.260 , 0.319 0.260 , 0.319	Depositor DCC
R_{free} test set	509 reflections (4.96%)	wwPDB-VP
Wilson B-factor (Å ²)	45.4	Xtrriage
Anisotropy	0.005	Xtrriage
Bulk solvent k_{sol} (e/Å ³), B_{sol} (Å ²)	0.25 , -1.5	EDS
L-test for twinning ²	$\langle L \rangle = 0.46$, $\langle L^2 \rangle = 0.28$	Xtrriage
Estimated twinning fraction	0.063 for -k,-h,-l	Xtrriage
F_o, F_c correlation	0.82	EDS
Total number of atoms	3924	wwPDB-VP
Average B, all atoms (Å ²)	47.0	wwPDB-VP

Xtrriage's analysis on translational NCS is as follows: *The largest off-origin peak in the Patterson function is 4.85% of the height of the origin peak. No significant pseudotranslation is detected.*

¹Intensities estimated from amplitudes.

²Theoretical values of $\langle |L| \rangle$, $\langle L^2 \rangle$ for acentric reflections are 0.5, 0.333 respectively for untwinned datasets, and 0.375, 0.2 for perfectly twinned datasets.

5 Model quality [i](#)

5.1 Standard geometry [i](#)

The Z score for a bond length (or angle) is the number of standard deviations the observed value is removed from the expected value. A bond length (or angle) with $|Z| > 5$ is considered an outlier worth inspection. RMSZ is the root-mean-square of all Z scores of the bond lengths (or angles).

Mol	Chain	Bond lengths		Bond angles	
		RMSZ	# Z >5	RMSZ	# Z >5
1	A	0.27	0/3985	0.54	5/5393 (0.1%)

Chiral center outliers are detected by calculating the chiral volume of a chiral center and verifying if the center is modelled as a planar moiety or with the opposite hand. A planarity outlier is detected by checking planarity of atoms in a peptide group, atoms in a mainchain group or atoms of a sidechain that are expected to be planar.

Mol	Chain	#Chirality outliers	#Planarity outliers
1	A	0	1

There are no bond length outliers.

All (5) bond angle outliers are listed below:

Mol	Chain	Res	Type	Atoms	Z	Observed(°)	Ideal(°)
1	A	594	ARG	NE-CZ-NH2	-10.26	115.17	120.30
1	A	594	ARG	NE-CZ-NH1	8.28	124.44	120.30
1	A	594	ARG	CA-CB-CG	6.23	127.10	113.40
1	A	594	ARG	CB-CG-CD	5.98	127.15	111.60
1	A	833	ASP	CB-CG-OD1	-5.66	113.20	118.30

There are no chirality outliers.

All (1) planarity outliers are listed below:

Mol	Chain	Res	Type	Group
1	A	775	ARG	Peptide

5.2 Too-close contacts [i](#)

In the following table, the Non-H and H(model) columns list the number of non-hydrogen atoms and hydrogen atoms in the chain respectively. The H(added) column lists the number of hydrogen atoms added and optimized by MolProbity. The Clashes column lists the number of clashes within

the asymmetric unit, whereas Symm-Clashes lists symmetry-related clashes.

Mol	Chain	Non-H	H(model)	H(added)	Clashes	Symm-Clashes
1	A	3924	0	3963	88	0
All	All	3924	0	3963	88	0

The all-atom clashscore is defined as the number of clashes found per 1000 atoms (including hydrogen atoms). The all-atom clashscore for this structure is 11.

All (88) close contacts within the same asymmetric unit are listed below, sorted by their clash magnitude.

Atom-1	Atom-2	Interatomic distance (Å)	Clash overlap (Å)
1:A:372:LYS:NZ	1:A:402:MET:SD	2.53	0.81
1:A:594:ARG:HG3	1:A:833:ASP:HB2	1.68	0.75
1:A:628:GLU:HG2	1:A:664:ASN:HB2	1.73	0.69
1:A:369:ILE:HA	1:A:372:LYS:HE2	1.74	0.69
1:A:536:LYS:HG3	1:A:565:ASP:HB3	1.75	0.67
1:A:354:LEU:HD22	1:A:413:PRO:HB3	1.77	0.67
1:A:500:GLN:NE2	1:A:806:LEU:O	2.27	0.66
1:A:530:LEU:HD23	1:A:533:LEU:HD12	1.76	0.65
1:A:359:LYS:NZ	1:A:467:GLU:OE1	2.31	0.64
1:A:438:ASN:HB3	1:A:441:GLN:HB2	1.80	0.64
1:A:596:GLY:HA2	1:A:837:ARG:HE	1.64	0.63
1:A:844:ILE:HB	1:A:878:LEU:HB2	1.81	0.62
1:A:437:GLU:HG2	1:A:438:ASN:H	1.64	0.62
1:A:540:ILE:HD13	1:A:836:ILE:HD11	1.83	0.59
1:A:594:ARG:HD3	1:A:830:CYS:H	1.67	0.59
1:A:711:LEU:HD21	1:A:771:VAL:HG21	1.84	0.58
1:A:628:GLU:OE2	1:A:663:GLU:N	2.36	0.58
1:A:721:GLN:OE1	1:A:756:SER:OG	2.23	0.56
1:A:359:LYS:HG2	1:A:783:ASN:HB3	1.86	0.56
1:A:829:LEU:HD22	1:A:833:ASP:OD2	2.05	0.56
1:A:416:LEU:HD13	1:A:456:VAL:HG22	1.88	0.55
1:A:382:LEU:HD12	1:A:422:VAL:HG21	1.89	0.55
1:A:438:ASN:HA	1:A:701:ASP:OD1	2.07	0.55
1:A:546:ILE:HD13	1:A:846:ILE:HA	1.89	0.55
1:A:468:MET:HB2	1:A:489:VAL:HA	1.88	0.55
1:A:386:GLU:O	1:A:390:MET:HG3	2.07	0.54
1:A:546:ILE:HD11	1:A:831:PHE:HE2	1.73	0.54
1:A:644:PRO:O	1:A:648:ARG:HG3	2.08	0.54
1:A:768:ARG:HG3	1:A:780:VAL:HG23	1.89	0.53
1:A:540:ILE:HD12	1:A:591:PRO:HD2	1.90	0.53
1:A:617:ARG:O	1:A:620:ILE:HG13	2.09	0.53

Continued on next page...

Continued from previous page...

Atom-1	Atom-2	Interatomic distance (Å)	Clash overlap (Å)
1:A:508:ALA:HB1	1:A:779:TYR:CG	2.44	0.52
1:A:617:ARG:H	1:A:620:ILE:HD11	1.75	0.52
1:A:606:LYS:HB3	1:A:632:ALA:HB2	1.92	0.51
1:A:788:MET:O	1:A:792:MET:HG2	2.12	0.50
1:A:474:GLU:N	1:A:475:PRO:HD2	2.26	0.50
1:A:547:PRO:HA	1:A:577:VAL:HG12	1.93	0.50
1:A:817:LYS:NZ	1:A:843:GLU:OE2	2.40	0.50
1:A:628:GLU:HG3	1:A:665:ILE:HG12	1.94	0.50
1:A:594:ARG:HG3	1:A:833:ASP:CB	2.41	0.49
1:A:659:VAL:O	1:A:662:LEU:HB2	2.12	0.49
1:A:491:HIS:O	1:A:617:ARG:NH2	2.40	0.48
1:A:433:LEU:O	1:A:445:ARG:NH1	2.45	0.48
1:A:606:LYS:HD2	1:A:632:ALA:HB2	1.95	0.48
1:A:533:LEU:HD23	1:A:533:LEU:HA	1.71	0.47
1:A:545:ALA:HB2	1:A:585:TYR:HB2	1.96	0.47
1:A:771:VAL:O	1:A:773:VAL:HG22	2.15	0.47
1:A:845:VAL:HG22	1:A:877:VAL:HG12	1.97	0.46
1:A:496:ARG:NH1	1:A:807:PHE:O	2.43	0.46
1:A:525:LYS:HD3	1:A:527:TRP:CZ2	2.49	0.46
1:A:834:ILE:HG21	1:A:875:PHE:CE1	2.51	0.46
1:A:437:GLU:HG2	1:A:438:ASN:N	2.29	0.46
1:A:760:SER:HB3	1:A:780:VAL:HG12	1.98	0.46
1:A:388:GLU:H	1:A:388:GLU:CD	2.19	0.46
1:A:461:ARG:HE	1:A:461:ARG:HB2	1.42	0.46
1:A:834:ILE:HD13	1:A:875:PHE:CZ	2.51	0.45
1:A:388:GLU:O	1:A:392:MET:HG2	2.16	0.45
1:A:409:ARG:HB3	1:A:421:LYS:HE3	1.99	0.45
1:A:785:LEU:HA	1:A:788:MET:HB2	1.97	0.45
1:A:677:ARG:NH2	1:A:719:ASP:OD2	2.47	0.44
1:A:685:LEU:HD12	1:A:720:ILE:HG21	1.99	0.44
1:A:648:ARG:NH2	1:A:670:ARG:O	2.36	0.44
1:A:711:LEU:CD2	1:A:771:VAL:HG21	2.48	0.44
1:A:594:ARG:HD3	1:A:829:LEU:HA	2.00	0.43
1:A:839:ARG:HD2	1:A:839:ARG:HA	1.61	0.43
1:A:356:TRP:CZ3	1:A:390:MET:HB3	2.54	0.43
1:A:496:ARG:NH1	1:A:808:ALA:HA	2.34	0.43
1:A:678:ARG:HH21	1:A:679:HIS:HE2	1.67	0.43
1:A:617:ARG:HB2	1:A:694:LEU:HB3	2.01	0.42
1:A:538:ILE:HD13	1:A:569:LEU:HD13	2.02	0.42
1:A:419:LEU:HB3	1:A:424:VAL:HG11	2.02	0.42
1:A:504:GLN:O	1:A:507:LEU:HB2	2.19	0.42

Continued on next page...

Continued from previous page...

Atom-1	Atom-2	Interatomic distance (Å)	Clash overlap (Å)
1:A:655:GLY:O	1:A:656:GLU:HB2	2.20	0.42
1:A:477:VAL:HA	1:A:480:VAL:HG22	2.01	0.42
1:A:624:ILE:HG23	1:A:665:ILE:HD11	2.01	0.42
1:A:450:VAL:HG13	1:A:485:ILE:HD11	2.02	0.41
1:A:543:PRO:O	1:A:863:LYS:NZ	2.46	0.41
1:A:457:LYS:HE2	1:A:457:LYS:HB2	1.91	0.41
1:A:673:ASN:OD1	1:A:675:VAL:HG22	2.20	0.41
1:A:768:ARG:O	1:A:772:SER:N	2.51	0.41
1:A:376:GLY:HA3	1:A:403:GLY:C	2.42	0.41
1:A:530:LEU:HD22	1:A:538:ILE:HG12	2.02	0.41
1:A:535:PHE:HA	1:A:538:ILE:HD12	2.03	0.41
1:A:594:ARG:HH21	1:A:594:ARG:HD2	1.52	0.41
1:A:850:LEU:HD12	1:A:853:GLN:NE2	2.35	0.41
1:A:538:ILE:O	1:A:547:PRO:HG2	2.21	0.41
1:A:480:VAL:HG23	1:A:481:GLY:H	1.87	0.40
1:A:826:GLN:HG2	1:A:868:LYS:NZ	2.37	0.40

There are no symmetry-related clashes.

5.3 Torsion angles [i](#)

5.3.1 Protein backbone [i](#)

In the following table, the Percentiles column shows the percent Ramachandran outliers of the chain as a percentile score with respect to all X-ray entries followed by that with respect to entries of similar resolution.

The Analysed column shows the number of residues for which the backbone conformation was analysed, and the total number of residues.

Mol	Chain	Analysed	Favoured	Allowed	Outliers	Percentiles
1	A	503/538 (94%)	454 (90%)	45 (9%)	4 (1%)	19 54

All (4) Ramachandran outliers are listed below:

Mol	Chain	Res	Type
1	A	587	PRO
1	A	593	VAL
1	A	599	PRO
1	A	601	ILE

5.3.2 Protein sidechains [i](#)

In the following table, the Percentiles column shows the percent sidechain outliers of the chain as a percentile score with respect to all X-ray entries followed by that with respect to entries of similar resolution.

The Analysed column shows the number of residues for which the sidechain conformation was analysed, and the total number of residues.

Mol	Chain	Analysed	Rotameric	Outliers	Percentiles
1	A	428/468 (92%)	420 (98%)	8 (2%)	57 82

All (8) residues with a non-rotameric sidechain are listed below:

Mol	Chain	Res	Type
1	A	350	HIS
1	A	438	ASN
1	A	530	LEU
1	A	581	ASP
1	A	591	PRO
1	A	594	ARG
1	A	606	LYS
1	A	841	ARG

Sometimes sidechains can be flipped to improve hydrogen bonding and reduce clashes. There are no such sidechains identified.

5.3.3 RNA [i](#)

There are no RNA molecules in this entry.

5.4 Non-standard residues in protein, DNA, RNA chains [i](#)

There are no non-standard protein/DNA/RNA residues in this entry.

5.5 Carbohydrates [i](#)

There are no monosaccharides in this entry.

5.6 Ligand geometry [i](#)

There are no ligands in this entry.

5.7 Other polymers [i](#)

There are no such residues in this entry.

5.8 Polymer linkage issues [i](#)

There are no chain breaks in this entry.

6 Fit of model and data [i](#)

6.1 Protein, DNA and RNA chains [i](#)

In the following table, the column labelled ‘#RSRZ > 2’ contains the number (and percentage) of RSRZ outliers, followed by percent RSRZ outliers for the chain as percentile scores relative to all X-ray entries and entries of similar resolution. The OWAB column contains the minimum, median, 95th percentile and maximum values of the occupancy-weighted average B-factor per residue. The column labelled ‘Q < 0.9’ lists the number of (and percentage) of residues with an average occupancy less than 0.9.

Mol	Chain	Analysed	<RSRZ>	#RSRZ>2	OWAB(Å ²)	Q<0.9
1	A	505/538 (93%)	0.32	18 (3%) 42 18	18, 46, 74, 126	0

All (18) RSRZ outliers are listed below:

Mol	Chain	Res	Type	RSRZ
1	A	726	PRO	7.7
1	A	536	LYS	3.1
1	A	724	ARG	2.9
1	A	834	ILE	2.8
1	A	606	LYS	2.7
1	A	603	ASP	2.3
1	A	537	ASP	2.2
1	A	413	PRO	2.2
1	A	725	LEU	2.2
1	A	705	HIS	2.2
1	A	483	GLU	2.2
1	A	446	ALA	2.1
1	A	529	GLU	2.1
1	A	819	ALA	2.1
1	A	564	ASP	2.1
1	A	448	ARG	2.1
1	A	565	ASP	2.0
1	A	548	CYS	2.0

6.2 Non-standard residues in protein, DNA, RNA chains [i](#)

There are no non-standard protein/DNA/RNA residues in this entry.

6.3 Carbohydrates [i](#)

There are no monosaccharides in this entry.

6.4 Ligands [i](#)

There are no ligands in this entry.

6.5 Other polymers [i](#)

There are no such residues in this entry.