



wwPDB EM Validation Summary Report ⓘ

Dec 7, 2022 – 05:00 PM JST

PDB ID : 7VMQ
EMDB ID : EMD-33940
Title : Structure of recombinant RyR2 (Ca²⁺ dataset, class 3, open state)
Authors : Kobayashi, T.; Tsutsumi, A.; Kurebayashi, N.; Kodama, M.; Kikkawa, M.;
Murayama, T.; Ogawa, H.
Deposited on : 2021-10-09
Resolution : 3.70 Å(reported)

This is a wwPDB EM Validation Summary Report for a publicly released PDB entry.

We welcome your comments at validation@mail.wwpdb.org

A user guide is available at

<https://www.wwpdb.org/validation/2017/EMValidationReportHelp>

with specific help available everywhere you see the ⓘ symbol.

The types of validation reports are described at

<http://www.wwpdb.org/validation/2017/FAQs#types>.

The following versions of software and data (see [references ⓘ](#)) were used in the production of this report:

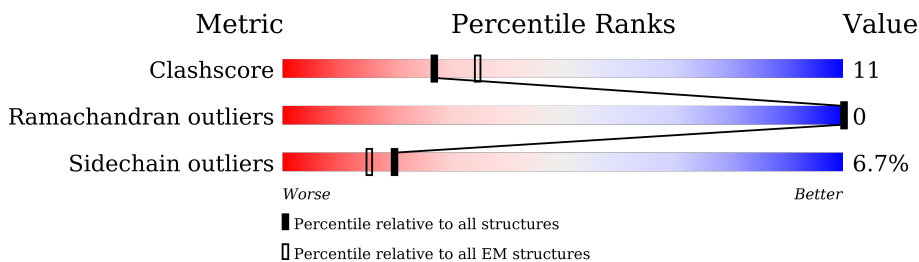
EMDB validation analysis : 0.0.1.dev43
MolProbity : 4.02b-467
Percentile statistics : 20191225.v01 (using entries in the PDB archive December 25th 2019)
MapQ : 1.9.9
Ideal geometry (proteins) : Engh & Huber (2001)
Ideal geometry (DNA, RNA) : Parkinson et al. (1996)
Validation Pipeline (wwPDB-VP) : 2.31.3

1 Overall quality at a glance

The following experimental techniques were used to determine the structure:
ELECTRON MICROSCOPY

The reported resolution of this entry is 3.70 Å.

Percentile scores (ranging between 0-100) for global validation metrics of the entry are shown in the following graphic. The table shows the number of entries on which the scores are based.



Metric	Whole archive (#Entries)	EM structures (#Entries)
Clashscore	158937	4297
Ramachandran outliers	154571	4023
Sidechain outliers	154315	3826

The table below summarises the geometric issues observed across the polymeric chains and their fit to the map. The red, orange, yellow and green segments of the bar indicate the fraction of residues that contain outliers for ≥ 3 , 2, 1 and 0 types of geometric quality criteria respectively. A grey segment represents the fraction of residues that are not modelled. The numeric value for each fraction is indicated below the corresponding segment, with a dot representing fractions $\leq 5\%$. The upper red bar (where present) indicates the fraction of residues that have poor fit to the EM map (all-atom inclusion $< 40\%$). The numeric value is given above the bar.

Mol	Chain	Length	Quality of chain
1	A	4966	
1	B	4966	
1	C	4966	
1	D	4966	
2	G	176	
2	H	176	
2	I	176	
2	J	176	

2 Entry composition [i](#)

There are 4 unique types of molecules in this entry. The entry contains 122036 atoms, of which 0 are hydrogens and 0 are deuteriums.

In the tables below, the AltConf column contains the number of residues with at least one atom in alternate conformation and the Trace column contains the number of residues modelled with at most 2 atoms.

- Molecule 1 is a protein called Ryanodine receptor 2.

Mol	Chain	Residues	Atoms					AltConf	Trace
			Total	C	N	O	S		
1	A	3991	29688	18782	5180	5553	173	0	0
1	B	3991	29688	18782	5180	5553	173	0	0
1	C	3991	29688	18782	5180	5553	173	0	0
1	D	3991	29688	18782	5180	5553	173	0	0

- Molecule 2 is a protein called Peptidyl-prolyl cis-trans isomerase FKBP1B.

Mol	Chain	Residues	Atoms					AltConf	Trace
			Total	C	N	O	S		
2	G	107	819	516	144	155	4	0	0
2	H	107	819	516	144	155	4	0	0
2	I	107	819	516	144	155	4	0	0
2	J	107	819	516	144	155	4	0	0

There are 276 discrepancies between the modelled and reference sequences:

Chain	Residue	Modelled	Actual	Comment	Reference
G	-67	MET	-	initiating methionine	UNP P68106
G	-66	GLY	-	expression tag	UNP P68106
G	-65	SER	-	expression tag	UNP P68106
G	-64	SER	-	expression tag	UNP P68106
G	-63	HIS	-	expression tag	UNP P68106
G	-62	HIS	-	expression tag	UNP P68106
G	-61	HIS	-	expression tag	UNP P68106
G	-60	HIS	-	expression tag	UNP P68106
G	-59	HIS	-	expression tag	UNP P68106

Continued on next page...

Continued from previous page...

Chain	Residue	Modelled	Actual	Comment	Reference
G	-58	HIS	-	expression tag	UNP P68106
G	-57	SER	-	expression tag	UNP P68106
G	-56	SER	-	expression tag	UNP P68106
G	-55	GLY	-	expression tag	UNP P68106
G	-54	LEU	-	expression tag	UNP P68106
G	-53	VAL	-	expression tag	UNP P68106
G	-52	PRO	-	expression tag	UNP P68106
G	-51	ARG	-	expression tag	UNP P68106
G	-50	GLY	-	expression tag	UNP P68106
G	-49	SER	-	expression tag	UNP P68106
G	-48	HIS	-	expression tag	UNP P68106
G	-47	MET	-	expression tag	UNP P68106
G	-46	ALA	-	expression tag	UNP P68106
G	-45	SER	-	expression tag	UNP P68106
G	-44	MET	-	expression tag	UNP P68106
G	-43	ASP	-	expression tag	UNP P68106
G	-42	GLU	-	expression tag	UNP P68106
G	-41	LYS	-	expression tag	UNP P68106
G	-40	THR	-	expression tag	UNP P68106
G	-39	THR	-	expression tag	UNP P68106
G	-38	GLY	-	expression tag	UNP P68106
G	-37	TRP	-	expression tag	UNP P68106
G	-36	ARG	-	expression tag	UNP P68106
G	-35	GLY	-	expression tag	UNP P68106
G	-34	GLY	-	expression tag	UNP P68106
G	-33	HIS	-	expression tag	UNP P68106
G	-32	VAL	-	expression tag	UNP P68106
G	-31	VAL	-	expression tag	UNP P68106
G	-30	GLU	-	expression tag	UNP P68106
G	-29	GLY	-	expression tag	UNP P68106
G	-28	LEU	-	expression tag	UNP P68106
G	-27	ALA	-	expression tag	UNP P68106
G	-26	GLY	-	expression tag	UNP P68106
G	-25	GLU	-	expression tag	UNP P68106
G	-24	LEU	-	expression tag	UNP P68106
G	-23	GLU	-	expression tag	UNP P68106
G	-22	GLN	-	expression tag	UNP P68106
G	-21	LEU	-	expression tag	UNP P68106
G	-20	ARG	-	expression tag	UNP P68106
G	-19	ALA	-	expression tag	UNP P68106
G	-18	ARG	-	expression tag	UNP P68106
G	-17	LEU	-	expression tag	UNP P68106

Continued on next page...

Continued from previous page...

Chain	Residue	Modelled	Actual	Comment	Reference
G	-16	GLU	-	expression tag	UNP P68106
G	-15	HIS	-	expression tag	UNP P68106
G	-14	HIS	-	expression tag	UNP P68106
G	-13	PRO	-	expression tag	UNP P68106
G	-12	GLN	-	expression tag	UNP P68106
G	-11	GLY	-	expression tag	UNP P68106
G	-10	GLN	-	expression tag	UNP P68106
G	-9	ARG	-	expression tag	UNP P68106
G	-8	GLU	-	expression tag	UNP P68106
G	-7	PRO	-	expression tag	UNP P68106
G	-6	GLY	-	expression tag	UNP P68106
G	-5	SER	-	expression tag	UNP P68106
G	-4	GLY	-	expression tag	UNP P68106
G	-3	GLY	-	expression tag	UNP P68106
G	-2	SER	-	expression tag	UNP P68106
G	-1	GLY	-	expression tag	UNP P68106
G	0	GLY	-	expression tag	UNP P68106
G	1	THR	-	expression tag	UNP P68106
H	-67	MET	-	initiating methionine	UNP P68106
H	-66	GLY	-	expression tag	UNP P68106
H	-65	SER	-	expression tag	UNP P68106
H	-64	SER	-	expression tag	UNP P68106
H	-63	HIS	-	expression tag	UNP P68106
H	-62	HIS	-	expression tag	UNP P68106
H	-61	HIS	-	expression tag	UNP P68106
H	-60	HIS	-	expression tag	UNP P68106
H	-59	HIS	-	expression tag	UNP P68106
H	-58	HIS	-	expression tag	UNP P68106
H	-57	SER	-	expression tag	UNP P68106
H	-56	SER	-	expression tag	UNP P68106
H	-55	GLY	-	expression tag	UNP P68106
H	-54	LEU	-	expression tag	UNP P68106
H	-53	VAL	-	expression tag	UNP P68106
H	-52	PRO	-	expression tag	UNP P68106
H	-51	ARG	-	expression tag	UNP P68106
H	-50	GLY	-	expression tag	UNP P68106
H	-49	SER	-	expression tag	UNP P68106
H	-48	HIS	-	expression tag	UNP P68106
H	-47	MET	-	expression tag	UNP P68106
H	-46	ALA	-	expression tag	UNP P68106
H	-45	SER	-	expression tag	UNP P68106
H	-44	MET	-	expression tag	UNP P68106

Continued on next page...

Continued from previous page...

Chain	Residue	Modelled	Actual	Comment	Reference
H	-43	ASP	-	expression tag	UNP P68106
H	-42	GLU	-	expression tag	UNP P68106
H	-41	LYS	-	expression tag	UNP P68106
H	-40	THR	-	expression tag	UNP P68106
H	-39	THR	-	expression tag	UNP P68106
H	-38	GLY	-	expression tag	UNP P68106
H	-37	TRP	-	expression tag	UNP P68106
H	-36	ARG	-	expression tag	UNP P68106
H	-35	GLY	-	expression tag	UNP P68106
H	-34	GLY	-	expression tag	UNP P68106
H	-33	HIS	-	expression tag	UNP P68106
H	-32	VAL	-	expression tag	UNP P68106
H	-31	VAL	-	expression tag	UNP P68106
H	-30	GLU	-	expression tag	UNP P68106
H	-29	GLY	-	expression tag	UNP P68106
H	-28	LEU	-	expression tag	UNP P68106
H	-27	ALA	-	expression tag	UNP P68106
H	-26	GLY	-	expression tag	UNP P68106
H	-25	GLU	-	expression tag	UNP P68106
H	-24	LEU	-	expression tag	UNP P68106
H	-23	GLU	-	expression tag	UNP P68106
H	-22	GLN	-	expression tag	UNP P68106
H	-21	LEU	-	expression tag	UNP P68106
H	-20	ARG	-	expression tag	UNP P68106
H	-19	ALA	-	expression tag	UNP P68106
H	-18	ARG	-	expression tag	UNP P68106
H	-17	LEU	-	expression tag	UNP P68106
H	-16	GLU	-	expression tag	UNP P68106
H	-15	HIS	-	expression tag	UNP P68106
H	-14	HIS	-	expression tag	UNP P68106
H	-13	PRO	-	expression tag	UNP P68106
H	-12	GLN	-	expression tag	UNP P68106
H	-11	GLY	-	expression tag	UNP P68106
H	-10	GLN	-	expression tag	UNP P68106
H	-9	ARG	-	expression tag	UNP P68106
H	-8	GLU	-	expression tag	UNP P68106
H	-7	PRO	-	expression tag	UNP P68106
H	-6	GLY	-	expression tag	UNP P68106
H	-5	SER	-	expression tag	UNP P68106
H	-4	GLY	-	expression tag	UNP P68106
H	-3	GLY	-	expression tag	UNP P68106
H	-2	SER	-	expression tag	UNP P68106

Continued on next page...

Continued from previous page...

Chain	Residue	Modelled	Actual	Comment	Reference
H	-1	GLY	-	expression tag	UNP P68106
H	0	GLY	-	expression tag	UNP P68106
H	1	THR	-	expression tag	UNP P68106
I	-67	MET	-	initiating methionine	UNP P68106
I	-66	GLY	-	expression tag	UNP P68106
I	-65	SER	-	expression tag	UNP P68106
I	-64	SER	-	expression tag	UNP P68106
I	-63	HIS	-	expression tag	UNP P68106
I	-62	HIS	-	expression tag	UNP P68106
I	-61	HIS	-	expression tag	UNP P68106
I	-60	HIS	-	expression tag	UNP P68106
I	-59	HIS	-	expression tag	UNP P68106
I	-58	HIS	-	expression tag	UNP P68106
I	-57	SER	-	expression tag	UNP P68106
I	-56	SER	-	expression tag	UNP P68106
I	-55	GLY	-	expression tag	UNP P68106
I	-54	LEU	-	expression tag	UNP P68106
I	-53	VAL	-	expression tag	UNP P68106
I	-52	PRO	-	expression tag	UNP P68106
I	-51	ARG	-	expression tag	UNP P68106
I	-50	GLY	-	expression tag	UNP P68106
I	-49	SER	-	expression tag	UNP P68106
I	-48	HIS	-	expression tag	UNP P68106
I	-47	MET	-	expression tag	UNP P68106
I	-46	ALA	-	expression tag	UNP P68106
I	-45	SER	-	expression tag	UNP P68106
I	-44	MET	-	expression tag	UNP P68106
I	-43	ASP	-	expression tag	UNP P68106
I	-42	GLU	-	expression tag	UNP P68106
I	-41	LYS	-	expression tag	UNP P68106
I	-40	THR	-	expression tag	UNP P68106
I	-39	THR	-	expression tag	UNP P68106
I	-38	GLY	-	expression tag	UNP P68106
I	-37	TRP	-	expression tag	UNP P68106
I	-36	ARG	-	expression tag	UNP P68106
I	-35	GLY	-	expression tag	UNP P68106
I	-34	GLY	-	expression tag	UNP P68106
I	-33	HIS	-	expression tag	UNP P68106
I	-32	VAL	-	expression tag	UNP P68106
I	-31	VAL	-	expression tag	UNP P68106
I	-30	GLU	-	expression tag	UNP P68106
I	-29	GLY	-	expression tag	UNP P68106

Continued on next page...

Continued from previous page...

Chain	Residue	Modelled	Actual	Comment	Reference
I	-28	LEU	-	expression tag	UNP P68106
I	-27	ALA	-	expression tag	UNP P68106
I	-26	GLY	-	expression tag	UNP P68106
I	-25	GLU	-	expression tag	UNP P68106
I	-24	LEU	-	expression tag	UNP P68106
I	-23	GLU	-	expression tag	UNP P68106
I	-22	GLN	-	expression tag	UNP P68106
I	-21	LEU	-	expression tag	UNP P68106
I	-20	ARG	-	expression tag	UNP P68106
I	-19	ALA	-	expression tag	UNP P68106
I	-18	ARG	-	expression tag	UNP P68106
I	-17	LEU	-	expression tag	UNP P68106
I	-16	GLU	-	expression tag	UNP P68106
I	-15	HIS	-	expression tag	UNP P68106
I	-14	HIS	-	expression tag	UNP P68106
I	-13	PRO	-	expression tag	UNP P68106
I	-12	GLN	-	expression tag	UNP P68106
I	-11	GLY	-	expression tag	UNP P68106
I	-10	GLN	-	expression tag	UNP P68106
I	-9	ARG	-	expression tag	UNP P68106
I	-8	GLU	-	expression tag	UNP P68106
I	-7	PRO	-	expression tag	UNP P68106
I	-6	GLY	-	expression tag	UNP P68106
I	-5	SER	-	expression tag	UNP P68106
I	-4	GLY	-	expression tag	UNP P68106
I	-3	GLY	-	expression tag	UNP P68106
I	-2	SER	-	expression tag	UNP P68106
I	-1	GLY	-	expression tag	UNP P68106
I	0	GLY	-	expression tag	UNP P68106
I	1	THR	-	expression tag	UNP P68106
J	-67	MET	-	initiating methionine	UNP P68106
J	-66	GLY	-	expression tag	UNP P68106
J	-65	SER	-	expression tag	UNP P68106
J	-64	SER	-	expression tag	UNP P68106
J	-63	HIS	-	expression tag	UNP P68106
J	-62	HIS	-	expression tag	UNP P68106
J	-61	HIS	-	expression tag	UNP P68106
J	-60	HIS	-	expression tag	UNP P68106
J	-59	HIS	-	expression tag	UNP P68106
J	-58	HIS	-	expression tag	UNP P68106
J	-57	SER	-	expression tag	UNP P68106
J	-56	SER	-	expression tag	UNP P68106

Continued on next page...

Continued from previous page...

Chain	Residue	Modelled	Actual	Comment	Reference
J	-55	GLY	-	expression tag	UNP P68106
J	-54	LEU	-	expression tag	UNP P68106
J	-53	VAL	-	expression tag	UNP P68106
J	-52	PRO	-	expression tag	UNP P68106
J	-51	ARG	-	expression tag	UNP P68106
J	-50	GLY	-	expression tag	UNP P68106
J	-49	SER	-	expression tag	UNP P68106
J	-48	HIS	-	expression tag	UNP P68106
J	-47	MET	-	expression tag	UNP P68106
J	-46	ALA	-	expression tag	UNP P68106
J	-45	SER	-	expression tag	UNP P68106
J	-44	MET	-	expression tag	UNP P68106
J	-43	ASP	-	expression tag	UNP P68106
J	-42	GLU	-	expression tag	UNP P68106
J	-41	LYS	-	expression tag	UNP P68106
J	-40	THR	-	expression tag	UNP P68106
J	-39	THR	-	expression tag	UNP P68106
J	-38	GLY	-	expression tag	UNP P68106
J	-37	TRP	-	expression tag	UNP P68106
J	-36	ARG	-	expression tag	UNP P68106
J	-35	GLY	-	expression tag	UNP P68106
J	-34	GLY	-	expression tag	UNP P68106
J	-33	HIS	-	expression tag	UNP P68106
J	-32	VAL	-	expression tag	UNP P68106
J	-31	VAL	-	expression tag	UNP P68106
J	-30	GLU	-	expression tag	UNP P68106
J	-29	GLY	-	expression tag	UNP P68106
J	-28	LEU	-	expression tag	UNP P68106
J	-27	ALA	-	expression tag	UNP P68106
J	-26	GLY	-	expression tag	UNP P68106
J	-25	GLU	-	expression tag	UNP P68106
J	-24	LEU	-	expression tag	UNP P68106
J	-23	GLU	-	expression tag	UNP P68106
J	-22	GLN	-	expression tag	UNP P68106
J	-21	LEU	-	expression tag	UNP P68106
J	-20	ARG	-	expression tag	UNP P68106
J	-19	ALA	-	expression tag	UNP P68106
J	-18	ARG	-	expression tag	UNP P68106
J	-17	LEU	-	expression tag	UNP P68106
J	-16	GLU	-	expression tag	UNP P68106
J	-15	HIS	-	expression tag	UNP P68106
J	-14	HIS	-	expression tag	UNP P68106

Continued on next page...

Continued from previous page...

Chain	Residue	Modelled	Actual	Comment	Reference
J	-13	PRO	-	expression tag	UNP P68106
J	-12	GLN	-	expression tag	UNP P68106
J	-11	GLY	-	expression tag	UNP P68106
J	-10	GLN	-	expression tag	UNP P68106
J	-9	ARG	-	expression tag	UNP P68106
J	-8	GLU	-	expression tag	UNP P68106
J	-7	PRO	-	expression tag	UNP P68106
J	-6	GLY	-	expression tag	UNP P68106
J	-5	SER	-	expression tag	UNP P68106
J	-4	GLY	-	expression tag	UNP P68106
J	-3	GLY	-	expression tag	UNP P68106
J	-2	SER	-	expression tag	UNP P68106
J	-1	GLY	-	expression tag	UNP P68106
J	0	GLY	-	expression tag	UNP P68106
J	1	THR	-	expression tag	UNP P68106

- Molecule 3 is ZINC ION (three-letter code: ZN) (formula: Zn) (labeled as "Ligand of Interest" by depositor).

Mol	Chain	Residues	Atoms	AltConf
3	A	1	Total Zn 1 1	0
3	B	1	Total Zn 1 1	0
3	C	1	Total Zn 1 1	0
3	D	1	Total Zn 1 1	0

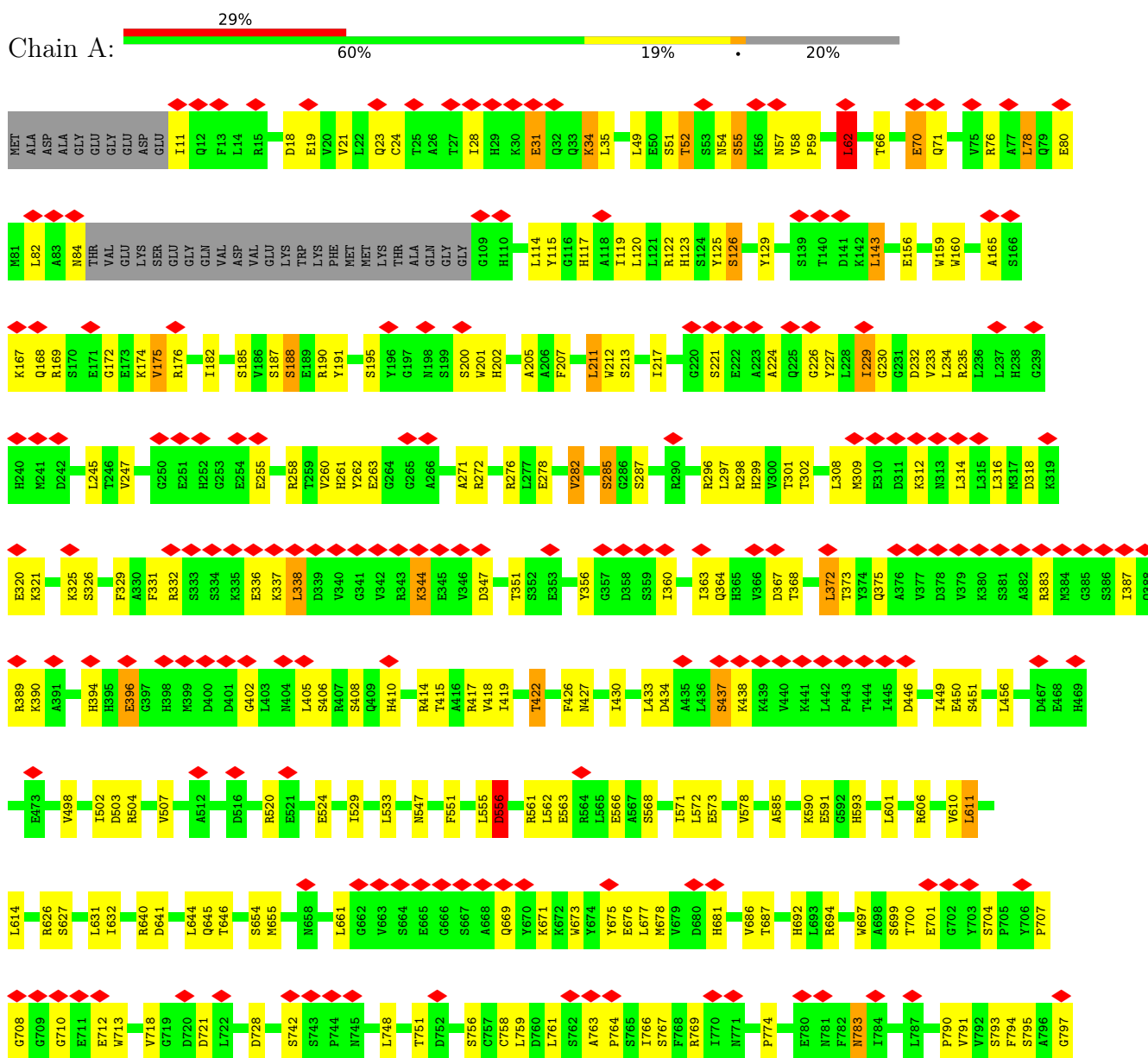
- Molecule 4 is CALCIUM ION (three-letter code: CA) (formula: Ca) (labeled as "Ligand of Interest" by depositor).

Mol	Chain	Residues	Atoms	AltConf
4	A	1	Total Ca 1 1	0
4	B	1	Total Ca 1 1	0
4	C	1	Total Ca 1 1	0
4	D	1	Total Ca 1 1	0

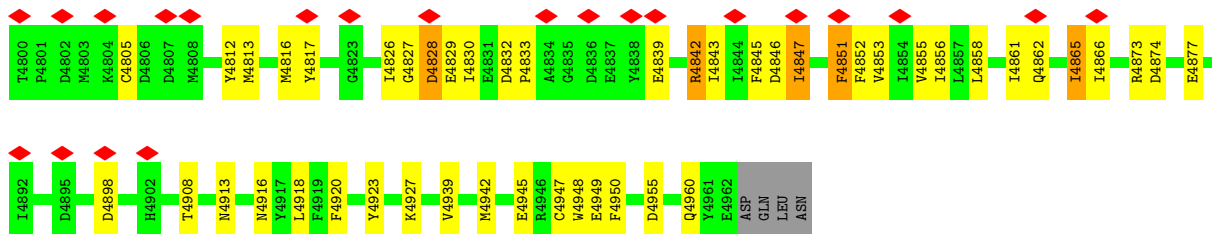
3 Residue-property plots

These plots are drawn for all protein, RNA, DNA and oligosaccharide chains in the entry. The first graphic for a chain summarises the proportions of the various outlier classes displayed in the second graphic. The second graphic shows the sequence view annotated by issues in geometry and atom inclusion in map density. Residues are color-coded according to the number of geometric quality criteria for which they contain at least one outlier: green = 0, yellow = 1, orange = 2 and red = 3 or more. A red diamond above a residue indicates a poor fit to the EM map for this residue (all-atom inclusion < 40%). Stretches of 2 or more consecutive residues without any outlier are shown as a green connector. Residues present in the sample, but not in the model, are shown in grey.

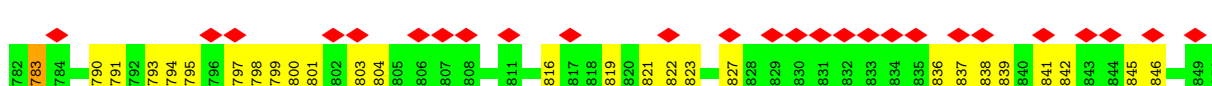
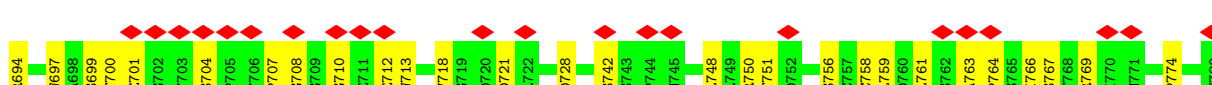
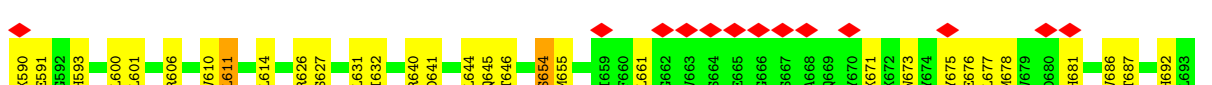
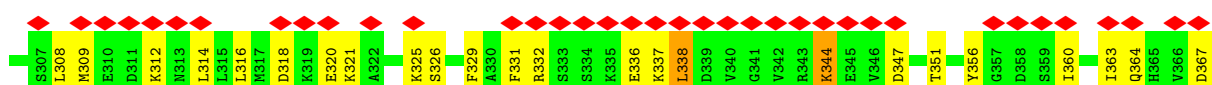
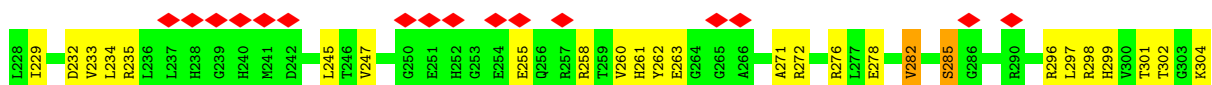
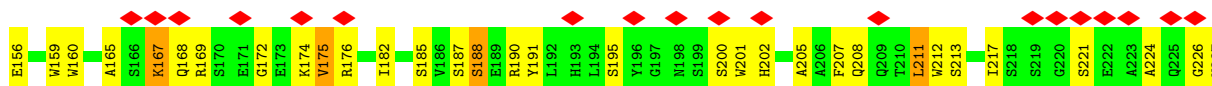
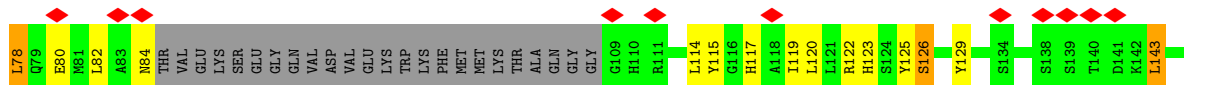
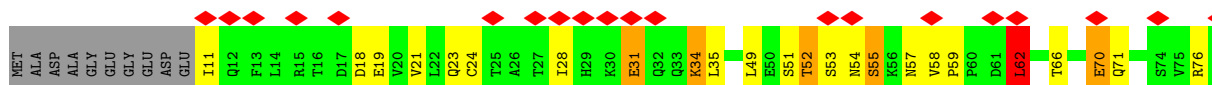
• Molecule 1: Ryanodine receptor 2

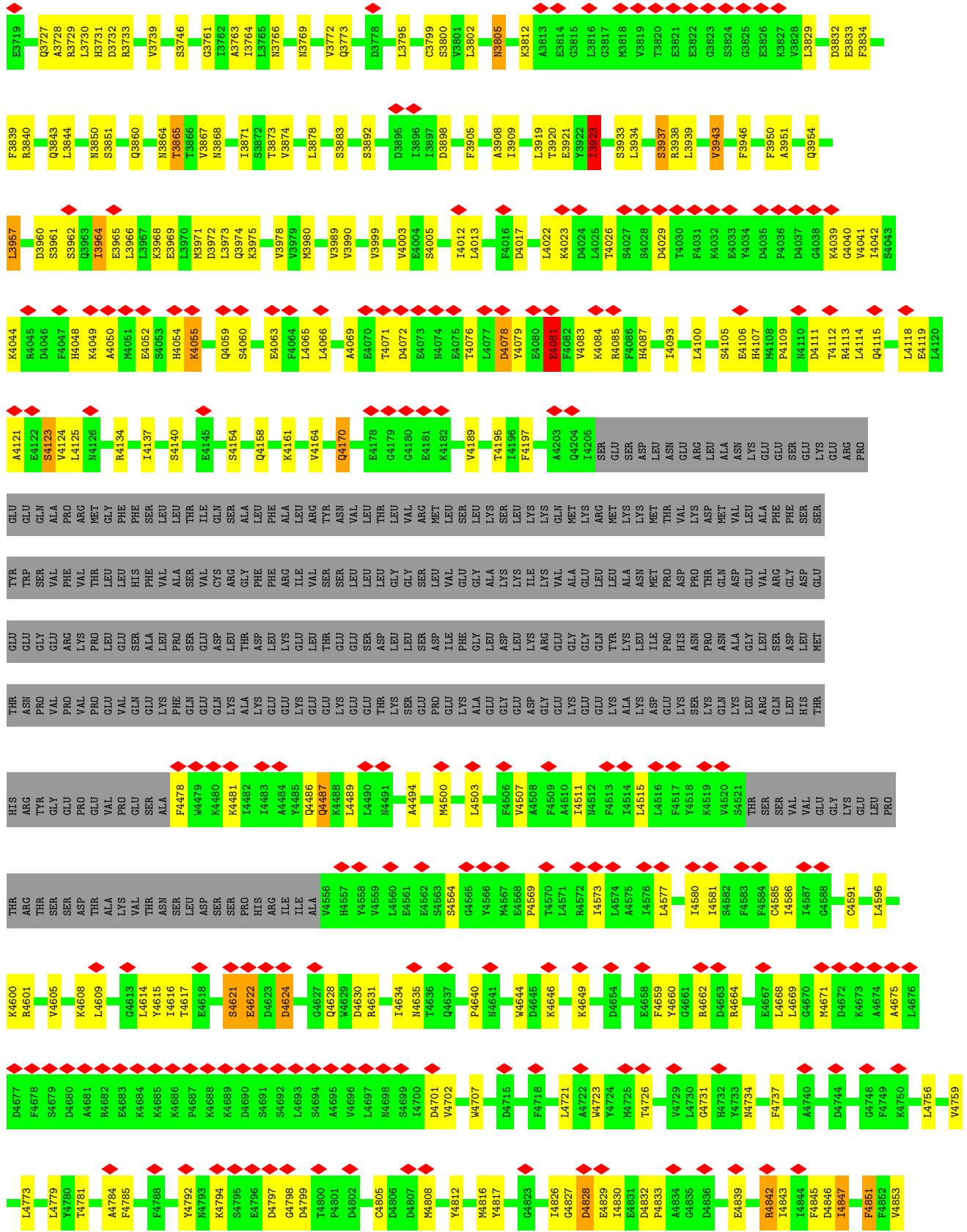


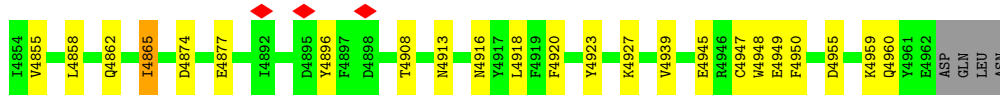
T1798	K799	V800	R801	F802	L803	G805	G806	R807	H808	F811	K812	F813	P816	P817	G818	Y819	A820	A821	C822	Y823	E824	L827	P828	K829	E830	K831	L832	K833	V834	E835	H836	S837	R838	E839	Y840	K841	Q842	E843	R844	T845	Y846	D849	L850	L851	G852	P853	T854	V855	D910	N911	K912	T858	Q859	A860	ALA				
PHE	THR	PRO	V965	P966	V967	D968	T969	S870	Q871	I872	V873	L874	P875	P876	H877	L878	E879	R880	I881	H882	Y883	R884	L885	A886	E887	N888	I889	H890	E891	L892	W893	V894	M895	N896	G897	I898	E899	L900	G901	W902	Q903	Y904	G905	P906	V907	R908	D909	D910	N911	K912	T858	Q859	A860	P916	C917	L918	V919	F920	
C922	K923	L924	P925	E926	Q927	E928	R929	N930	Y931	N932	L933	Q934	M935	S936	L937	E938	T939	L940	K941	T942	L943	L944	A945	L946	G947	C948	H949	V950	G951	L952	A953	ASP	GLU	HIS	ALA	GLU	GLU	LYS	VAL	LYS	LYS	ASP	GLU	LEU	PRO	LYS	ASN	Y970	Q971	L972	T973	S974	G975	Y976	K977	P978	A979	P980	M981
D982	L983	S984	F985	I986	K987	L988	T989	P990	S991	Q992	E993	A994	M995	V996	D997	K998	L999	A1000	E1001	M1002	A1003	H1004	N1005	V1006	R1009	D1010	I1011	I1012	R1013	Q1014	TRP	THR	TYR	GLY	ILE	GLN	ASP	VAL	LYS	ASN	R1027	R1028	M1029	P1030	R1031	L1032	V1033	P1034	Y1035	T1036	L1037	L1038	D1039	D1040	R1041	T1042			
K1043	K1044	S1045	N1046	D1047	S1049	L1050	R1051	E1052	A1053	V1054	A1055	T1056	L1057	L1058	G1059	Y1060	G1061	Y1062	HIS	LEU	GLU	ALA	PRO	ASP	GLN	ASP	HIS	ALA	SER	ARG	ALA	GLU	VAL	CYS	SER	GLY	THR	GLY	R1084	K1092	A1095	A1098	Y1102	F1103	E1104	G1111	D1112	S1118	R1119	P1120									
D1131	D1132	R1133	F1137	D1138	G1139	F1140	R1144	Q1147	G1148	N1149	E1150	H1151	Y1152	Q1157	D1160	G1163	M1165	V1166	D1167	M1168	M1169	H1170	H1171	M1172	M1173	F1174	F1175	T1176	L1183	D1184	D1185	S1186	G1187	S1188	E1189	L1190	A1191	F1192	K1193	D1194	F1195	D1196	D1199	G1200	F1201	I1202	P1203	V1204	L1207										
G1208	V1209	A1210	Q1211	F1217	D1220	V1221	S1222	K1225	C1230	G1231	L1232	Q1233	E1234	G1235	Y1236	A1240	R1245	D1246	L1251	S1252	K1253	L1254	R1255	P1256	Q1257	P1262	S1263	N1264	H1265	E1266	H1267	V1270	I1271	R1272	I1273	D1274	GLY	THR	ASP	SER	SER	PRO	CYS	K1284	Q1287	K1288	S1289												
F1290	G1291	S1292	Q1293	N1294	N1295	N1296	T1297	A1311	X1312	X1313	X1314	X1315	X1322	X1323	X1326	X1327	X1328	X1333	D1342	L1346	M1347	X1348	T1349	A1350	H1351	G1352	H1353	D1357	R1358	I1359	D1360	K1361	D1362	K1367	H1373	L1384	X1387	X1388	X1392	X1395	X1396	X1397	X1398	X1399	X1402														
X1403	X1404	X1405	X1406	X1407	X1412	X1413	X1414	X1415	X1421	X1422	X1423	X1424	X1425	X1426	X1427	X1428	X1429	X1430	X1431	X1432	X1433	X1434	X1437	X1446	UNK	UNK	UNK	UNK	UNK	UNK	UNK	UNK	UNK	UNK	UNK	UNK	UNK	UNK	UNK	UNK	UNK	UNK	UNK	UNK	UNK	UNK	UNK	UNK	UNK	UNK	UNK								
UNK	UNK	UNK	UNK	UNK	UNK	UNK	UNK	UNK	UNK	UNK	UNK	UNK	UNK	UNK	UNK	UNK	UNK	UNK	UNK	UNK	UNK	UNK	UNK	UNK	UNK	UNK	UNK	UNK	UNK	UNK	UNK	UNK	UNK	UNK	UNK	UNK	UNK	UNK	UNK	UNK	UNK	UNK	UNK	UNK	UNK	UNK	UNK	UNK	UNK	UNK	UNK	UNK							
UNK	UNK	UNK	UNK	UNK	UNK	UNK	UNK	UNK	UNK	UNK	UNK	UNK	UNK	UNK	UNK	UNK	UNK	UNK	UNK	UNK	UNK	UNK	UNK	UNK	UNK	UNK	UNK	UNK	UNK	UNK	UNK	UNK	UNK	UNK	UNK	UNK	UNK	UNK	UNK	UNK	UNK	UNK	UNK	UNK	UNK	UNK	UNK	UNK	UNK	UNK	UNK								
UNK	UNK	UNK	UNK	UNK	UNK	UNK	UNK	UNK	UNK	UNK	UNK	UNK	UNK	UNK	UNK	UNK	UNK	UNK	UNK	UNK	UNK	UNK	UNK	UNK	UNK	UNK	UNK	UNK	UNK	UNK	UNK	UNK	UNK	UNK	UNK	UNK	UNK	UNK	UNK	UNK	UNK	UNK	UNK	UNK	UNK	UNK	UNK	UNK	UNK	UNK	UNK	UNK							
UNK	UNK	UNK	UNK	UNK	UNK	UNK	UNK	UNK	UNK	UNK	UNK	UNK	UNK	UNK	UNK	UNK	UNK	UNK	UNK	UNK	UNK	UNK	UNK	UNK	UNK	UNK	UNK	UNK	UNK	UNK	UNK	UNK	UNK	UNK	UNK	UNK	UNK	UNK	UNK	UNK	UNK	UNK	UNK	UNK	UNK	UNK	UNK	UNK	UNK	UNK	UNK	UNK	UNK						
UNK	UNK	UNK	UNK	UNK	UNK	UNK	UNK	UNK	UNK	UNK	UNK	UNK	UNK	UNK	UNK	UNK	UNK	UNK	UNK	UNK	UNK	UNK	UNK	UNK	UNK	UNK	UNK	UNK	UNK	UNK	UNK	UNK	UNK	UNK	UNK	UNK	UNK	UNK	UNK	UNK	UNK	UNK	UNK	UNK	UNK	UNK	UNK	UNK	UNK	UNK	UNK	UNK	UNK	UNK					
UNK	UNK	UNK	UNK	UNK	UNK	UNK	UNK	UNK	UNK	UNK	UNK	UNK	UNK	UNK	UNK	UNK	UNK	UNK	UNK	UNK	UNK	UNK	UNK	UNK	UNK	UNK	UNK	UNK	UNK	UNK	UNK	UNK	UNK	UNK	UNK	UNK	UNK	UNK	UNK	UNK	UNK	UNK	UNK	UNK	UNK	UNK	UNK	UNK	UNK	UNK	UNK	UNK	UNK	UNK	UNK	UNK			
E1614	R1615	V1620	Q1621	C1622	L1623	D1624	Q1627	F1628	M1629	S1630	L1631	E1635	D1641	I1642	L1643	E1644	L1645	H1655	T1658	L1661	Y1662	L1663	C1666	G1669	H1675	A1676	L1677	C1678	S1679	H1680	V1681	D1682	E1683	P1684	Q1685	R1700	Y1704	T1708	D1709	H1710	H1711	L1712	S1713	ST174	Y1715	A1716													
T1717	A1718	R1719	L1720	N1723	I1727	M1730	T1731	T1734	K1735	S1736	I1737	T1738	L1739	F1740	P1741	D1742	E1743	N1744	K1745	K1746	H1747	G1748	L1749	P1750	G1751	I1752	L1754	S1755	I1756	S1757	L1758	M1762	R1763	F1764	I1772	S1773	M1774	D1775	C1776	Y1777	S1780	K1789	T1792	I1793	V1800	K1801	E1802	G1803											



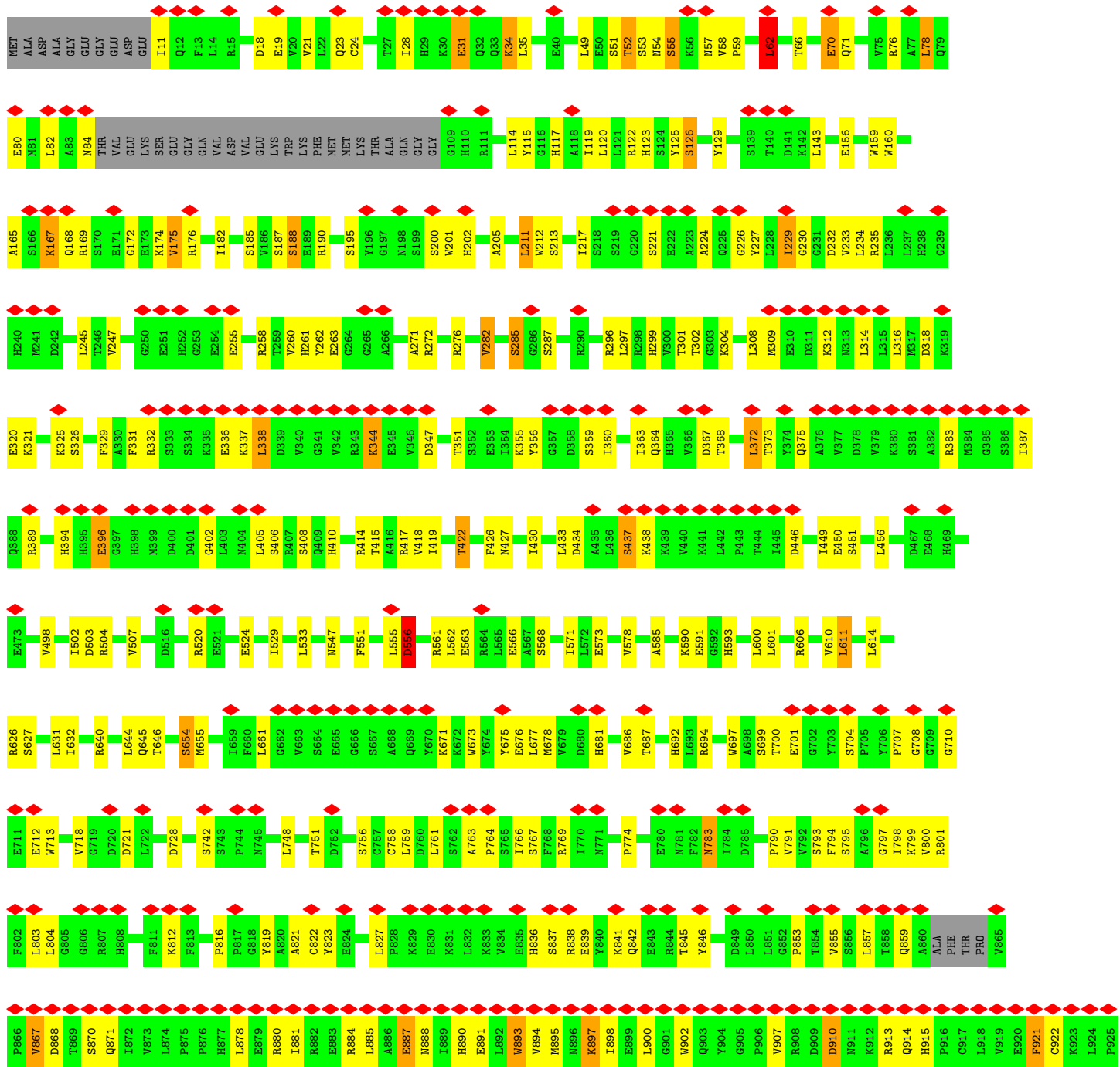
• Molecule 1: Ryanodine receptor 2



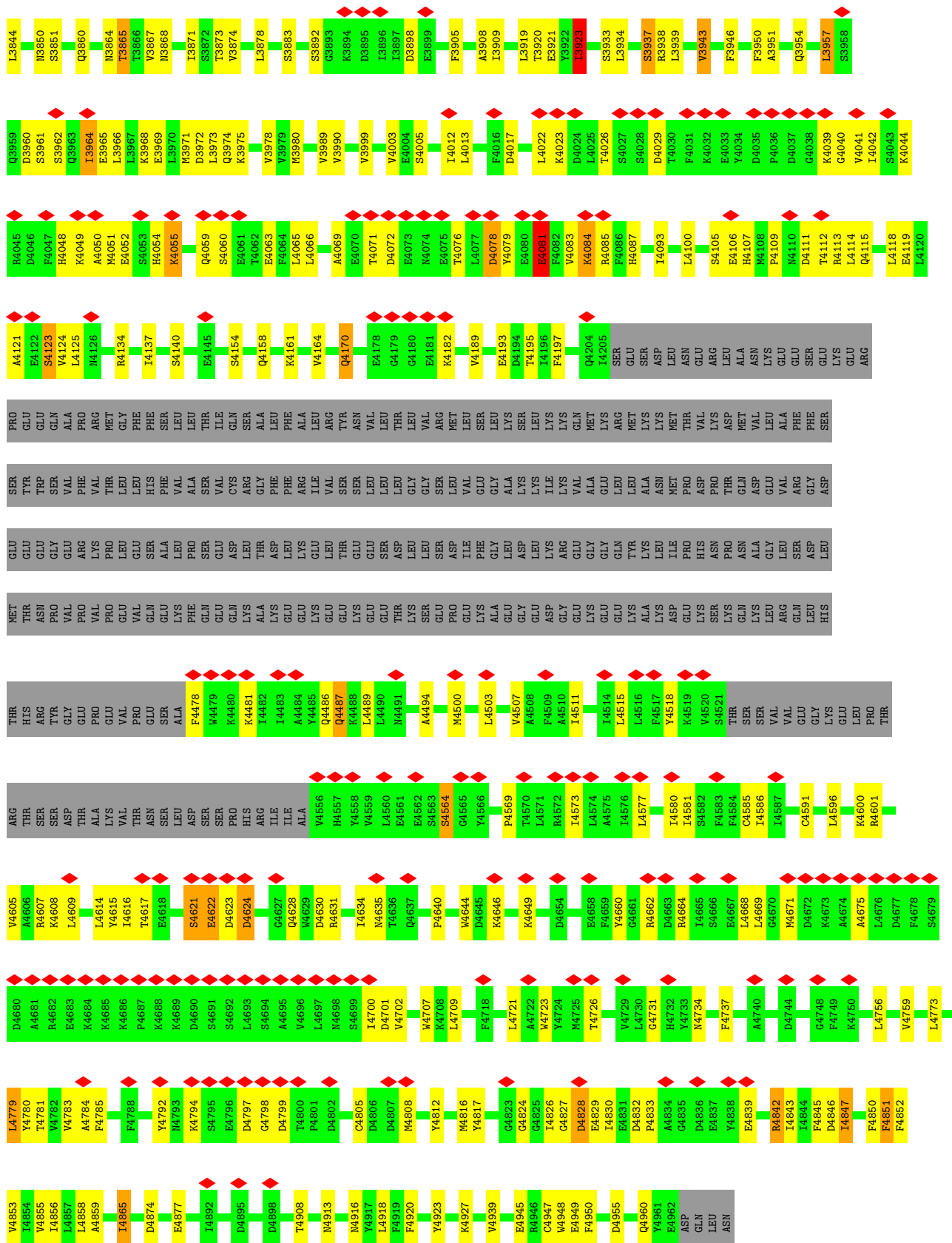




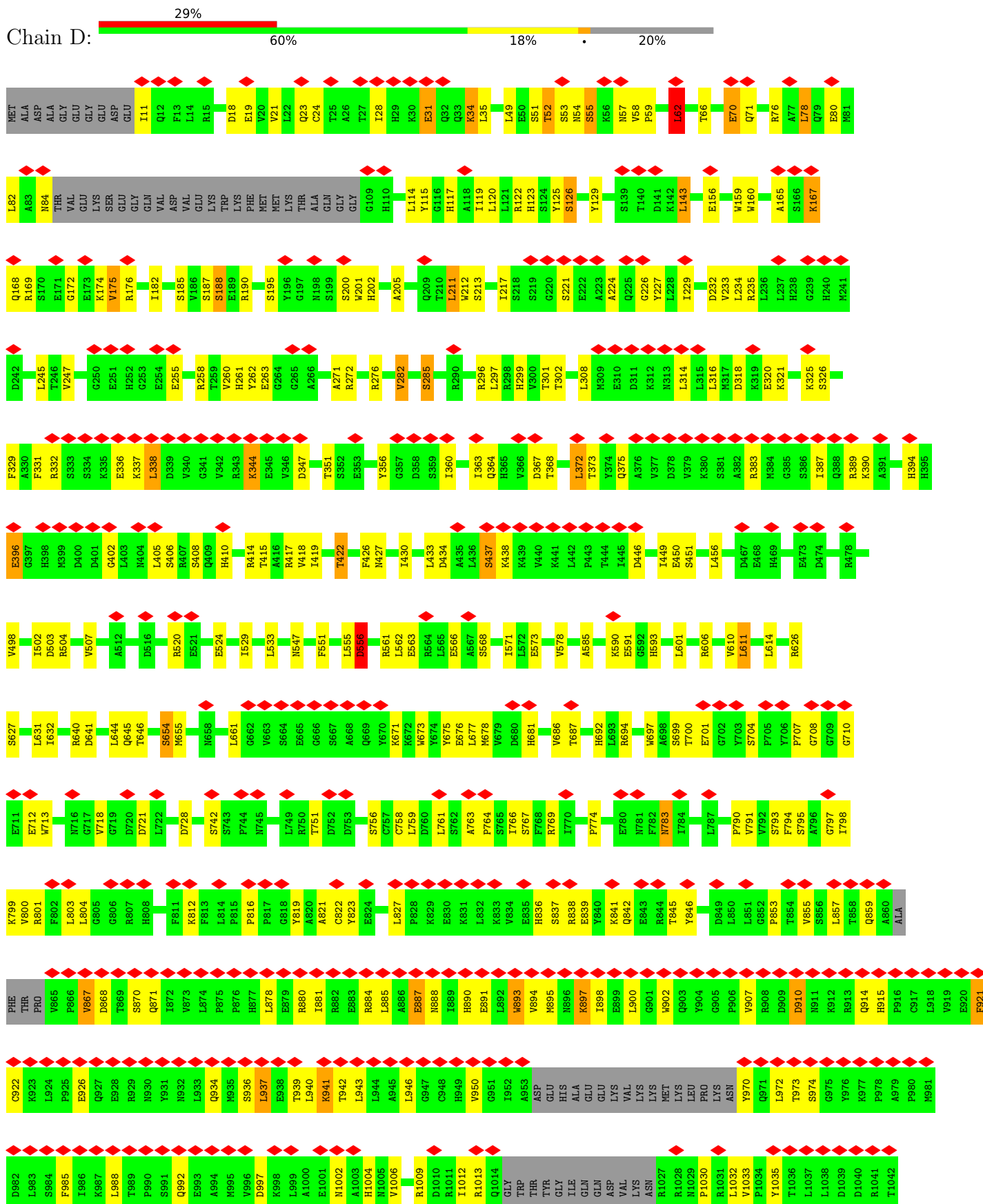
• Molecule 1: Ryanodine receptor 2

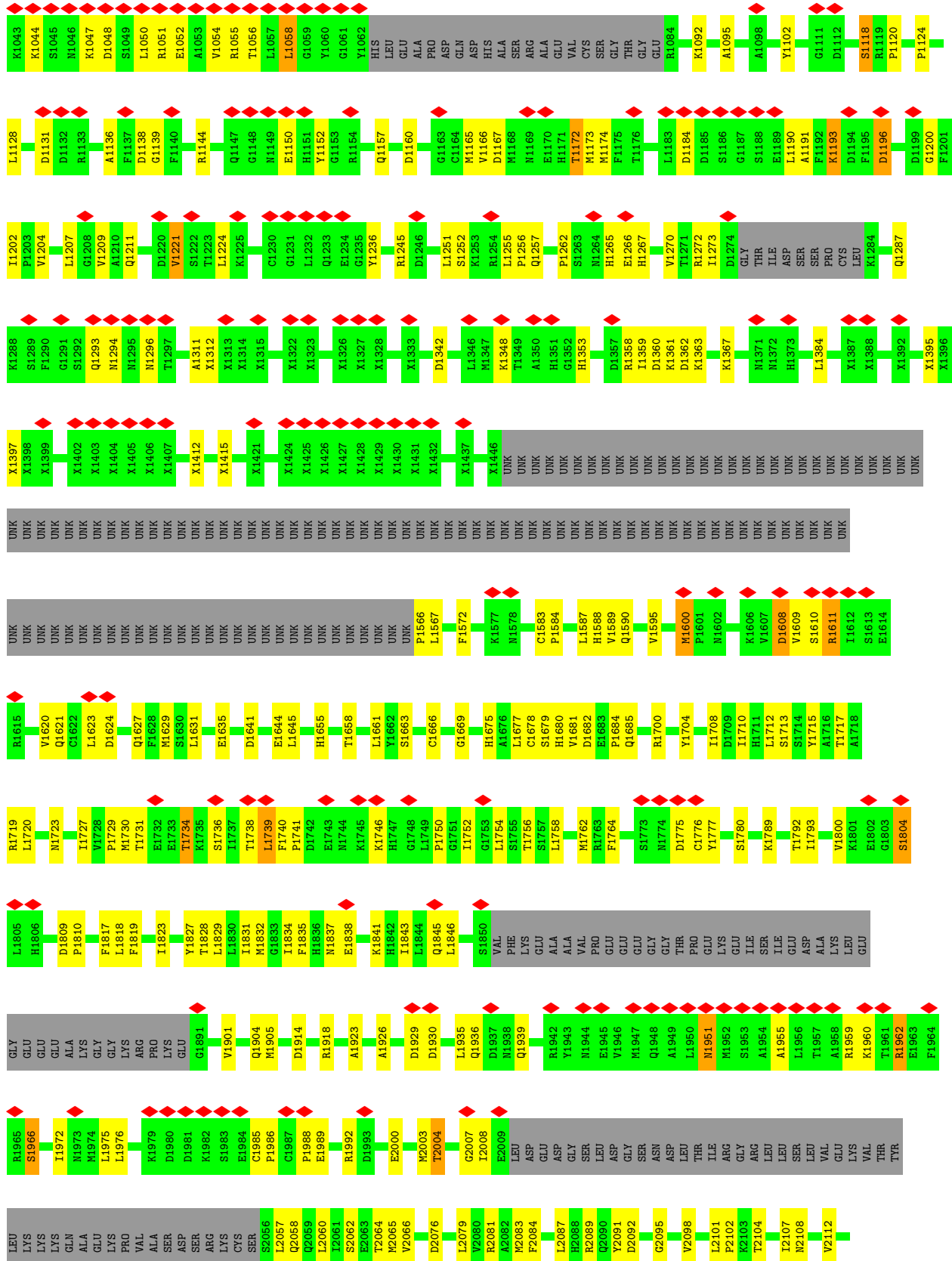


R3729	I3640	X3509	X3327	X3147	X3027	X2967
L3750	E3641	X3510	X3328	X3148	X3028	X2968
D3642	D3642	X3511	X3329	X3149	X3029	X2969
D3732	L3643	X3512	X3330	X3150	UNK	X2970
R3733	G3647	X3513	X3331	X3151	UNK	X2971
V3739	A3648	X3514	X3332	X3152	UNK	X2972
S3746	GLU	X3515	X3333	X3153	UNK	X2973
G3761	LEU	X3516	X3334	X3154	UNK	X2974
L3762	PRO	X3517	X3335	X3155	UNK	X2975
A3763	GLU	X3518	X3336	X3156	UNK	X2976
A3764	GLU	X3519	X3337	X3157	UNK	X2977
L3765	ASP	X3520	X3338	X3158	UNK	X2978
N3766	ALA	X3521	X3339	X3159	UNK	X2979
N3769	MET	X3522	X3340	X3160	UNK	X2980
V3772	LYS	X3523	X3341	X3161	UNK	X2981
Q3773	R3659	X3524	X3342	X3162	UNK	X2982
D3778	V3660	X3525	X3343	X3163	UNK	X2983
L3795	D3661	X3526	X3344	X3164	UNK	X2984
C3799	L3666	X3527	X3345	X3165	UNK	X2985
S3800	T3676	X3528	X3346	X3166	UNK	X2986
V3801	E3677	X3529	X3347	X3167	UNK	X2987
L3802	E3682	X3530	X3348	X3168	UNK	X2988
D3803	E3683	X3531	X3349	X3169	UNK	X2989
F3684	F3684	X3532	X3350	X3170	UNK	X2990
L3804	L3686	X3533	X3351	X3171	UNK	X2991
N3805	Y3690	X3534	X3352	X3172	UNK	X2992
A3813	UNK	X3535	X3353	X3173	UNK	X2993
E3814	UNK	X3536	X3354	X3174	UNK	X2994
G3815	UNK	X3537	X3355	X3175	UNK	X2995
L3816	UNK	X3538	X3356	X3176	UNK	X2996
G3817	UNK	X3539	X3357	X3177	UNK	X2997
N3818	UNK	X3540	X3358	X3178	UNK	X2998
V3819	UNK	X3541	X3359	X3179	UNK	X2999
T3820	UNK	X3542	X3360	X3180	UNK	X3000
E3821	UNK	X3543	X3361	X3181	UNK	X3001
E3822	UNK	X3544	X3362	X3182	UNK	X3002
G3823	P3611	X3545	X3363	X3183	UNK	X3003
S3824	R3612	X3546	X3364	X3184	UNK	X3004
G3825	H3613	X3547	X3365	X3185	UNK	X3005
E3826	R3614	X3548	X3366	X3186	UNK	X3006
K3827	N3617	X3549	X3367	X3187	UNK	X3007
V3828	L3618	X3550	X3368	X3188	UNK	X3008
L3829	F3619	X3551	X3369	X3189	UNK	X3009
D3832	E3624	X3552	X3370	X3190	UNK	X3010
E3833	T3630	X3553	X3371	X3191	UNK	X3011
F3834	E3631	X3554	X3372	X3192	UNK	X3012
F3839	E3632	X3555	X3373	X3193	UNK	X3013
R3840	D3637	X3556	X3374	X3194	UNK	X3014
Q3843	L3638	X3557	X3375	X3195	UNK	X3015
	K3639	X3558	X3376	X3196	UNK	X3016
		X3559	X3377	X3197	UNK	X3017
		X3560	X3378	X3198	UNK	X3018
		X3561	X3379	X3199	UNK	X3019
		X3562	X3380	X3200	UNK	X3020
		X3563	X3381	X3201	UNK	X3021
		X3564	X3382	X3202	UNK	X3022
		X3565	X3383	X3203	UNK	X3023
		X3566	X3384	X3204	UNK	X3024
		X3567	X3385	X3205	UNK	X3025
		X3568	X3386	X3206	UNK	X3026
			X3387	X3207	UNK	
			X3388	X3208	UNK	
			X3389	X3209	UNK	
			X3390	X3210	UNK	
			X3391	X3211	UNK	
			X3392	X3212	UNK	
			X3393	X3213	UNK	
			X3394	X3214	UNK	
			X3395	X3215	UNK	
			X3396	X3216	UNK	
			X3397	X3217	UNK	
			X3398	X3218	UNK	
			X3399	X3219	UNK	
			X3400	X3220	UNK	
			X3401	X3221	UNK	
			X3402	X3222	UNK	
			X3403	X3223	UNK	
			X3404	X3224	UNK	
			X3405	X3225	UNK	
			X3406	X3226	UNK	
			X3407	X3227	UNK	
			X3408	X3228	UNK	
			X3409	X3229	UNK	
			X3410	X3230	UNK	
			X3411	X3231	UNK	
			X3412	X3232	UNK	
			X3413	X3233	UNK	
			X3414	X3234	UNK	
			X3415	X3235	UNK	
			X3416	X3236	UNK	
			X3417	X3237	UNK	
			X3418	X3238	UNK	
			X3419	X3239	UNK	
			X3420	X3240	UNK	
			X3421	X3241	UNK	
			X3422	X3242	UNK	
			X3423	X3243	UNK	
			X3424	X3244	UNK	
			X3425	X3245	UNK	
			X3426	X3246	UNK	
			X3427	X3247	UNK	
			X3428	X3248	UNK	
			X3429	X3249	UNK	
			X3430	X3250	UNK	
			X3431	X3251	UNK	
			X3432	X3252	UNK	
			X3433	X3253	UNK	
			X3434	X3254	UNK	
			UNK	X3255	UNK	
			UNK	X3256	UNK	
			UNK	X3257	UNK	
			UNK	X3258	UNK	
			UNK	X3259	UNK	
			UNK	X3260	UNK	
			UNK	X3261	UNK	
			UNK	X3262	UNK	
			UNK	X3263	UNK	
			UNK	X3264	UNK	
			UNK	X3265	UNK	
			UNK	X3266	UNK	
			UNK	X3267	UNK	
			UNK	X3268	UNK	
			UNK	X3269	UNK	
			UNK	X3270	UNK	
			UNK	X3271	UNK	
			UNK	X3272	UNK	
			UNK	X3273	UNK	
			UNK	X3274	UNK	
			UNK	X3275	UNK	
			UNK	X3276	UNK	
			UNK	X3277	UNK	
			UNK	X3278	UNK	
			UNK	X3279	UNK	
			UNK	X3280	UNK	
			UNK	X3281	UNK	
			UNK	X3282	UNK	
			UNK	X3283	UNK	
			UNK	X3284	UNK	
			UNK	X3285	UNK	
			UNK	X3286	UNK	
			UNK	X3287	UNK	
			UNK	X3288	UNK	
			UNK	X3289	UNK	
			UNK	X3290	UNK	
			UNK	X3291	UNK	
			UNK	X3292	UNK	
			UNK	X3293	UNK	
			UNK	X3294	UNK	
			UNK	X3295	UNK	
			UNK	X3296	UNK	
			UNK	X3297	UNK	
			UNK	X3298	UNK	
			UNK	X3299	UNK	
			UNK	X3300	UNK	
			UNK	X3301	UNK	
			UNK	X3302	UNK	
			UNK	X3303	UNK	
			UNK	X3304	UNK	
			UNK	X3305	UNK	
			UNK	X3306	UNK	
			UNK	X3307	UNK	
			UNK	X3308	UNK	
			UNK	X3309	UNK	
			UNK	X3310	UNK	
			UNK	X3311	UNK	
			UNK	X3312	UNK	
			UNK	X3313	UNK	
			UNK	X3314	UNK	
			UNK	X3315	UNK	
			UNK	X3316	UNK	
			UNK	X3317	UNK	
			UNK	X3318	UNK	
			UNK	X3319	UNK	
			UNK	X3320	UNK	
			UNK	X3321	UNK	
			UNK	X3322	UNK	
			UNK	X3323	UNK	
			UNK	X3324	UNK	
			UNK	X3325	UNK	
			UNK	X3326	UNK	

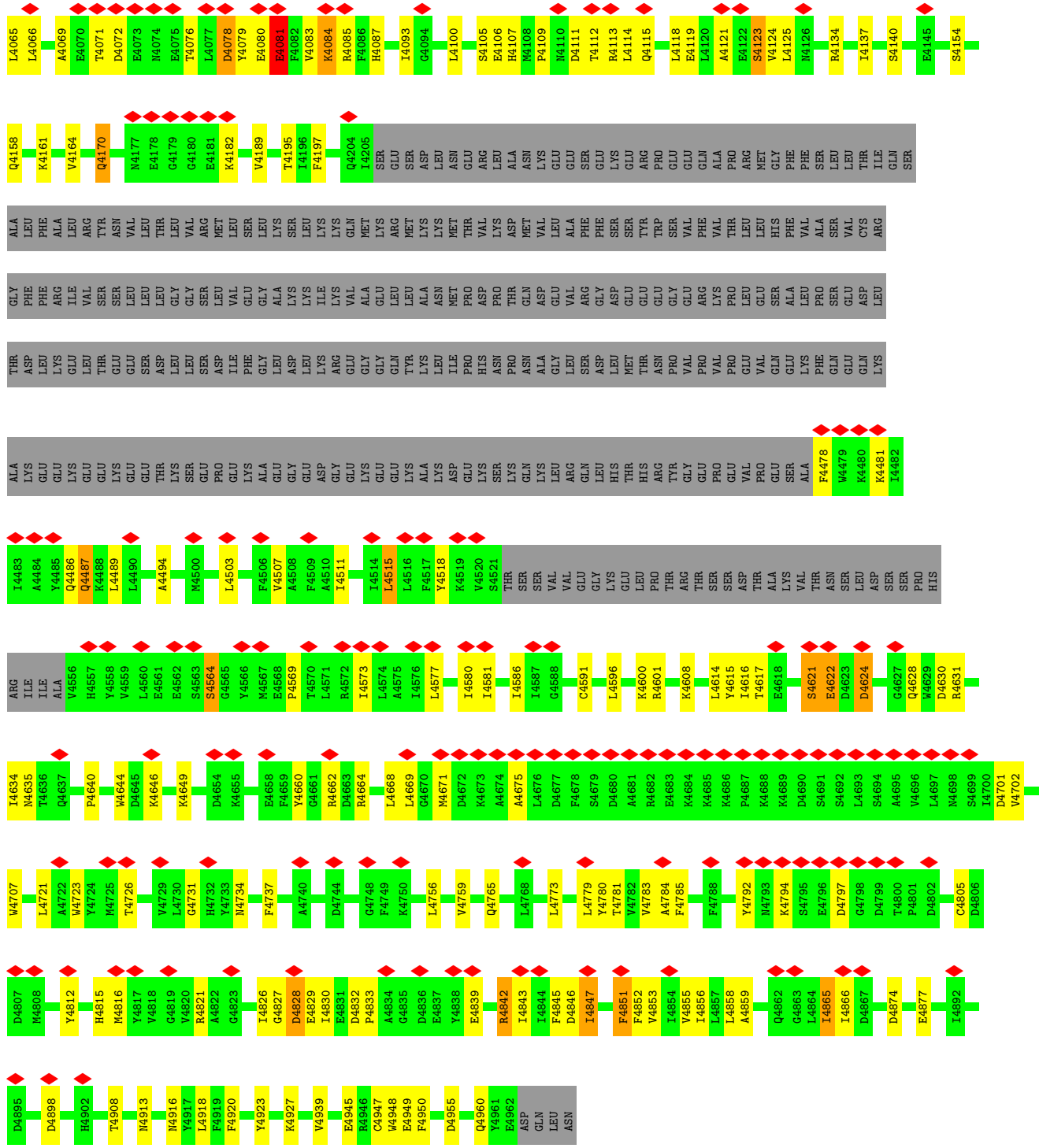


• Molecule 1: Ryanodine receptor 2





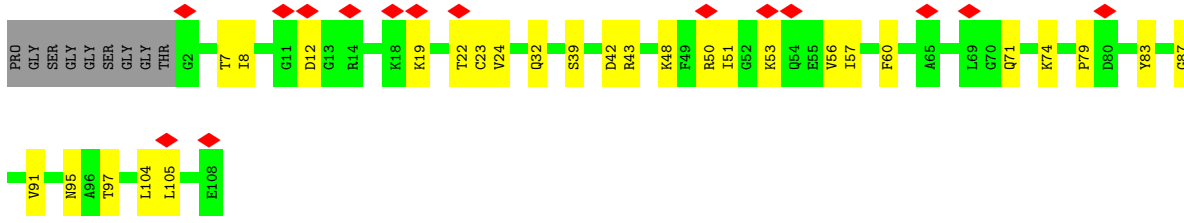
The image displays a detailed validation summary for the protein structure EMD-33940, 7VMQ. It consists of multiple horizontal tracks of amino acid residues. Each track shows the residue ID (e.g., L2128, S2236, G2341, L2942, etc.), the residue name (e.g., LYS, SER, THR, etc.), and a colored bar representing its validation status. Red diamonds above the bars indicate specific validation issues or outliers. The tracks are color-coded: grey for 'UNKNOWN' (UNK), green for 'Good', orange for 'Warning', and yellow for 'Bad'. The residues are organized into groups, likely corresponding to different subunits or domains of the protein. The overall layout is a grid-like structure where each row represents a residue and its associated validation data across different categories.



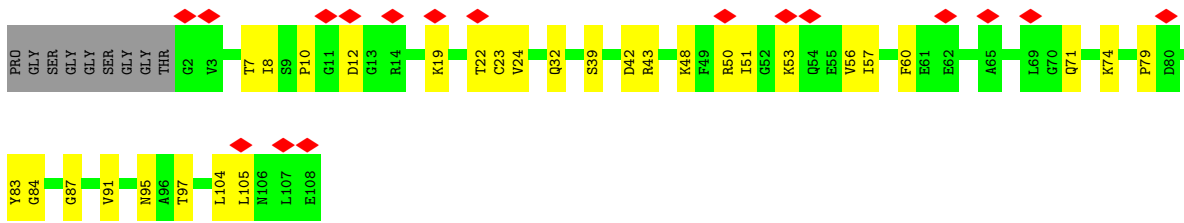
● Molecule 2: Peptidyl-prolyl cis-trans isomerase FKBP1B



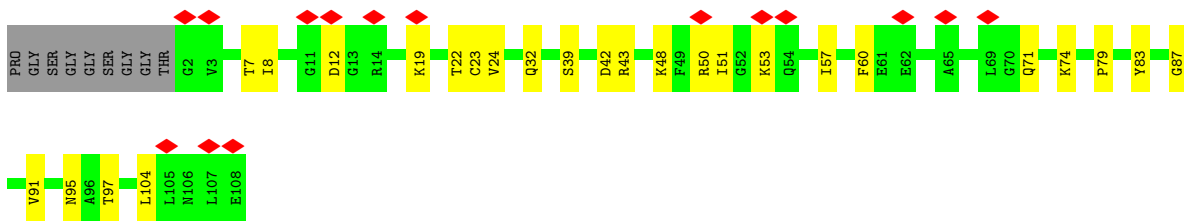
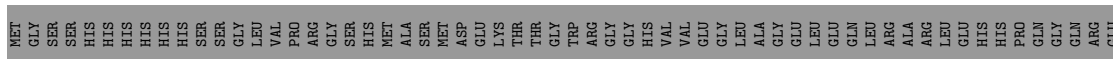
MET	GLY	SER	SER	HIS	HIS	HIS	HIS	HIS	SER	SER	LEU	VAL	PRO	ARG	GLY	GLY	SER	HIS	MET	ALA	SER	MET	ASP	GLU	LYS	THR	THR	GLY	TRP	ARG	GLY	GLY	HIS	VAL	VAL	GLY	GLY	LEU	ALA	GLU	LEU	LEU	GLN	GLN	ALA	ALA	LEU	LEU	PRO	HIS	HIS	PRO	GLN	GLY	GLN	ARG	ARG	LEU	LEU	HIS	HIS	PRO	GLN	PRO	GLY	GLN	ARG	ARG	GLU
-----	-----	-----	-----	-----	-----	-----	-----	-----	-----	-----	-----	-----	-----	-----	-----	-----	-----	-----	-----	-----	-----	-----	-----	-----	-----	-----	-----	-----	-----	-----	-----	-----	-----	-----	-----	-----	-----	-----	-----	-----	-----	-----	-----	-----	-----	-----	-----	-----	-----	-----	-----	-----	-----	-----	-----	-----	-----	-----	-----	-----	-----	-----	-----	-----	-----	-----	-----	-----	-----



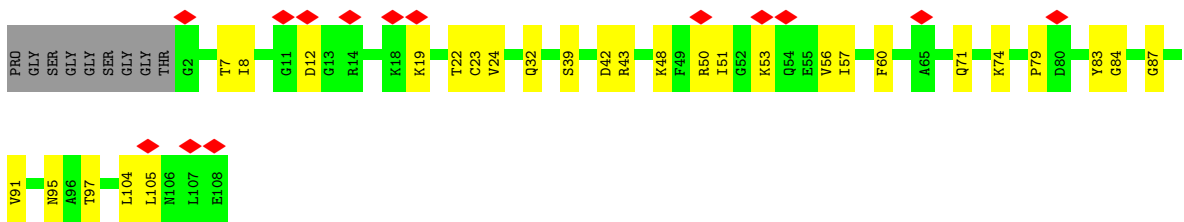
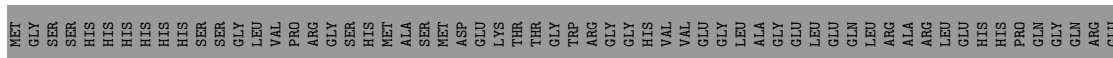
• Molecule 2: Peptidyl-prolyl cis-trans isomerase FKBP1B



• Molecule 2: Peptidyl-prolyl cis-trans isomerase FKBP1B



• Molecule 2: Peptidyl-prolyl cis-trans isomerase FKBP1B



4 Experimental information

Property	Value	Source
EM reconstruction method	SINGLE PARTICLE	Depositor
Imposed symmetry	POINT, Not provided	
Number of particles used	40665	Depositor
Resolution determination method	FSC 0.143 CUT-OFF	Depositor
CTF correction method	PHASE FLIPPING AND AMPLITUDE CORRECTION	Depositor
Microscope	FEI TITAN KRIOS	Depositor
Voltage (kV)	300	Depositor
Electron dose ($e^-/\text{\AA}^2$)	60	Depositor
Minimum defocus (nm)	Not provided	
Maximum defocus (nm)	Not provided	
Magnification	Not provided	
Image detector	GATAN K3 (6k x 4k)	Depositor
Maximum map value	0.119	Depositor
Minimum map value	-0.084	Depositor
Average map value	-0.000	Depositor
Map value standard deviation	0.005	Depositor
Recommended contour level	0.021	Depositor
Map size (Å)	421.25998, 421.25998, 421.25998	wwPDB
Map dimensions	340, 340, 340	wwPDB
Map angles (°)	90.0, 90.0, 90.0	wwPDB
Pixel spacing (Å)	1.239, 1.239, 1.239	Depositor

5 Model quality i

5.1 Standard geometry i

Bond lengths and bond angles in the following residue types are not validated in this section: ZN, CA

The Z score for a bond length (or angle) is the number of standard deviations the observed value is removed from the expected value. A bond length (or angle) with $|Z| > 5$ is considered an outlier worth inspection. RMSZ is the root-mean-square of all Z scores of the bond lengths (or angles).

Mol	Chain	Bond lengths		Bond angles	
		RMSZ	# Z >5	RMSZ	# Z >5
1	A	0.27	1/26573 (0.0%)	0.47	6/35881 (0.0%)
1	B	0.27	1/26573 (0.0%)	0.47	6/35881 (0.0%)
1	C	0.27	1/26573 (0.0%)	0.47	6/35881 (0.0%)
1	D	0.27	1/26573 (0.0%)	0.47	6/35881 (0.0%)
2	G	0.27	0/835	0.51	1/1123 (0.1%)
2	H	0.27	0/835	0.51	1/1123 (0.1%)
2	I	0.27	0/835	0.51	1/1123 (0.1%)
2	J	0.27	0/835	0.51	1/1123 (0.1%)
All	All	0.27	4/109632 (0.0%)	0.47	28/148016 (0.0%)

All (4) bond length outliers are listed below:

Mol	Chain	Res	Type	Atoms	Z	Observed(Å)	Ideal(Å)
1	C	2866	ASN	C-N	5.61	1.47	1.34
1	A	2866	ASN	C-N	5.61	1.47	1.34
1	B	2866	ASN	C-N	5.59	1.47	1.34
1	D	2866	ASN	C-N	5.58	1.46	1.34

The worst 5 of 28 bond angle outliers are listed below:

Mol	Chain	Res	Type	Atoms	Z	Observed(°)	Ideal(°)
1	A	556	ASP	CB-CG-OD1	7.22	124.79	118.30
1	C	556	ASP	CB-CG-OD1	7.20	124.78	118.30
1	B	556	ASP	CB-CG-OD1	7.17	124.75	118.30
1	D	556	ASP	CB-CG-OD1	7.16	124.75	118.30
1	B	2776	GLU	CA-CB-CG	6.34	127.36	113.40

There are no chirality outliers.

There are no planarity outliers.

5.2 Too-close contacts [i](#)

In the following table, the Non-H and H(model) columns list the number of non-hydrogen atoms and hydrogen atoms in the chain respectively. The H(added) column lists the number of hydrogen atoms added and optimized by MolProbity. The Clashes column lists the number of clashes within the asymmetric unit, whereas Symm-Clashes lists symmetry-related clashes.

Mol	Chain	Non-H	H(model)	H(added)	Clashes	Symm-Clashes
1	A	29688	0	26384	631	0
1	B	29688	0	26384	640	0
1	C	29688	0	26384	637	0
1	D	29688	0	26384	619	0
2	G	819	0	821	18	0
2	H	819	0	821	21	0
2	I	819	0	821	19	0
2	J	819	0	821	17	0
3	A	1	0	0	0	0
3	B	1	0	0	0	0
3	C	1	0	0	0	0
3	D	1	0	0	0	0
4	A	1	0	0	0	0
4	B	1	0	0	0	0
4	C	1	0	0	0	0
4	D	1	0	0	0	0
All	All	122036	0	108820	2518	0

The all-atom clashscore is defined as the number of clashes found per 1000 atoms (including hydrogen atoms). The all-atom clashscore for this structure is 11.

The worst 5 of 2518 close contacts within the same asymmetric unit are listed below, sorted by their clash magnitude.

Atom-1	Atom-2	Interatomic distance (Å)	Clash overlap (Å)
1:B:1629:MET:SD	1:B:1685:GLN:NE2	2.43	0.92
1:D:1629:MET:SD	1:D:1685:GLN:NE2	2.43	0.91
1:B:4003:VAL:HG11	1:B:4113:ARG:HD2	1.53	0.90
1:A:1629:MET:SD	1:A:1685:GLN:NE2	2.43	0.90
1:A:4003:VAL:HG11	1:A:4113:ARG:HD2	1.53	0.89

There are no symmetry-related clashes.

5.3 Torsion angles [i](#)

5.3.1 Protein backbone [i](#)

In the following table, the Percentiles column shows the percent Ramachandran outliers of the chain as a percentile score with respect to all PDB entries followed by that with respect to all EM entries.

The Analysed column shows the number of residues for which the backbone conformation was analysed, and the total number of residues.

Mol	Chain	Analysed	Favoured	Allowed	Outliers	Percentiles	
1	A	3218/4966 (65%)	2997 (93%)	221 (7%)	0	100	100
1	B	3218/4966 (65%)	2996 (93%)	222 (7%)	0	100	100
1	C	3218/4966 (65%)	2996 (93%)	222 (7%)	0	100	100
1	D	3218/4966 (65%)	2996 (93%)	222 (7%)	0	100	100
2	G	105/176 (60%)	99 (94%)	6 (6%)	0	100	100
2	H	105/176 (60%)	99 (94%)	6 (6%)	0	100	100
2	I	105/176 (60%)	99 (94%)	6 (6%)	0	100	100
2	J	105/176 (60%)	99 (94%)	6 (6%)	0	100	100
All	All	13292/20568 (65%)	12381 (93%)	911 (7%)	0	100	100

There are no Ramachandran outliers to report.

5.3.2 Protein sidechains [i](#)

In the following table, the Percentiles column shows the percent sidechain outliers of the chain as a percentile score with respect to all PDB entries followed by that with respect to all EM entries.

The Analysed column shows the number of residues for which the sidechain conformation was analysed, and the total number of residues.

Mol	Chain	Analysed	Rotameric	Outliers	Percentiles	
1	A	2827/3387 (84%)	2632 (93%)	195 (7%)	15	46
1	B	2827/3387 (84%)	2632 (93%)	195 (7%)	15	46
1	C	2827/3387 (84%)	2632 (93%)	195 (7%)	15	46
1	D	2827/3387 (84%)	2632 (93%)	195 (7%)	15	46
2	G	88/140 (63%)	87 (99%)	1 (1%)	73	85
2	H	88/140 (63%)	87 (99%)	1 (1%)	73	85

Continued on next page...

Continued from previous page...

Mol	Chain	Analysed	Rotameric	Outliers	Percentiles	
2	I	88/140 (63%)	87 (99%)	1 (1%)	73	85
2	J	88/140 (63%)	87 (99%)	1 (1%)	73	85
All	All	11660/14108 (83%)	10876 (93%)	784 (7%)	20	47

5 of 784 residues with a non-rotameric sidechain are listed below:

Mol	Chain	Res	Type
1	C	1058	LEU
1	C	4624	ASP
1	C	1624	ASP
1	C	1048	ASP
1	C	2842	MET

Sometimes sidechains can be flipped to improve hydrogen bonding and reduce clashes. 5 of 210 such sidechains are listed below:

Mol	Chain	Res	Type
1	C	476	GLN
1	C	3721	GLN
1	D	3932	GLN
1	C	629	GLN
1	C	1675	HIS

5.3.3 RNA [i](#)

There are no RNA molecules in this entry.

5.4 Non-standard residues in protein, DNA, RNA chains [i](#)

There are no non-standard protein/DNA/RNA residues in this entry.

5.5 Carbohydrates [i](#)

There are no monosaccharides in this entry.

5.6 Ligand geometry [i](#)

Of 8 ligands modelled in this entry, 8 are monoatomic - leaving 0 for Mogul analysis.

There are no bond length outliers.

There are no bond angle outliers.

There are no chirality outliers.

There are no torsion outliers.

There are no ring outliers.

No monomer is involved in short contacts.

5.7 Other polymers [i](#)

There are no such residues in this entry.

5.8 Polymer linkage issues [i](#)

There are no chain breaks in this entry.

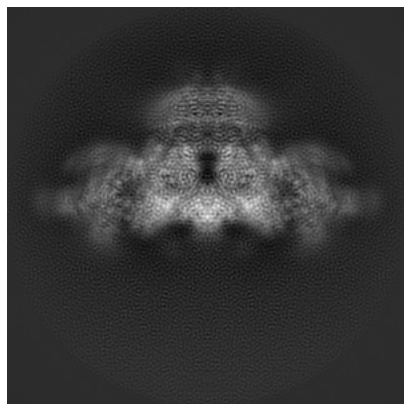
6 Map visualisation [i](#)

This section contains visualisations of the EMDB entry EMD-33940. These allow visual inspection of the internal detail of the map and identification of artifacts.

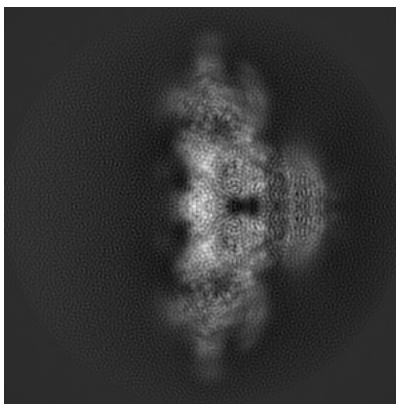
Images derived from a raw map, generated by summing the deposited half-maps, are presented below the corresponding image components of the primary map to allow further visual inspection and comparison with those of the primary map.

6.1 Orthogonal projections [i](#)

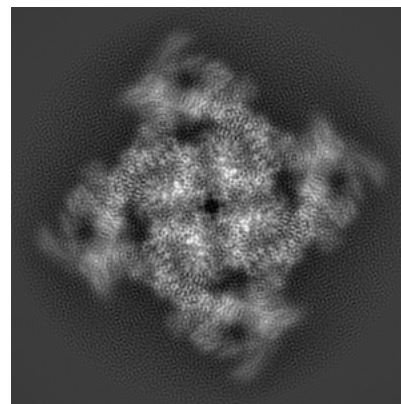
6.1.1 Primary map



X

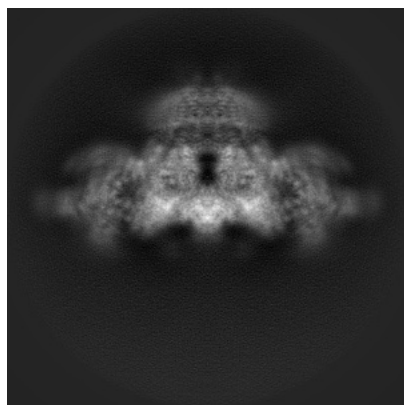


Y

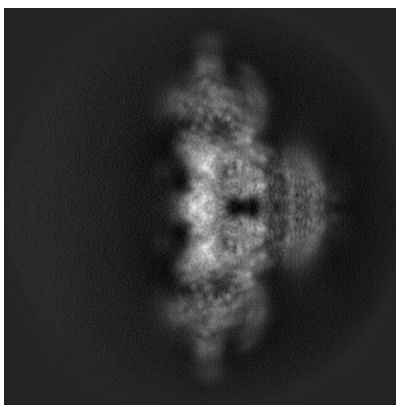


Z

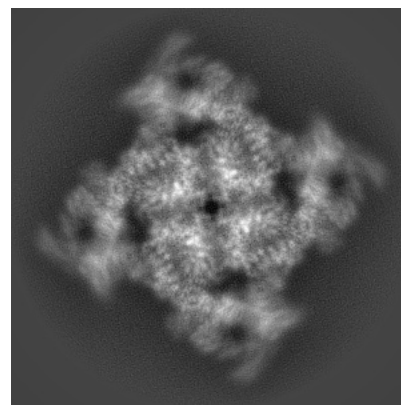
6.1.2 Raw map



X



Y

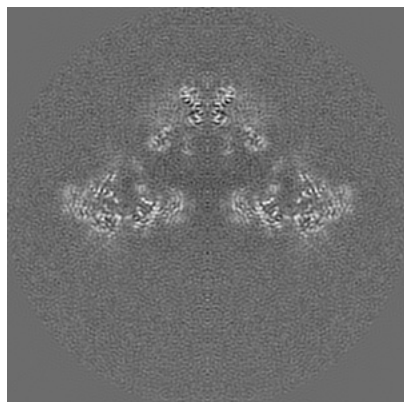


Z

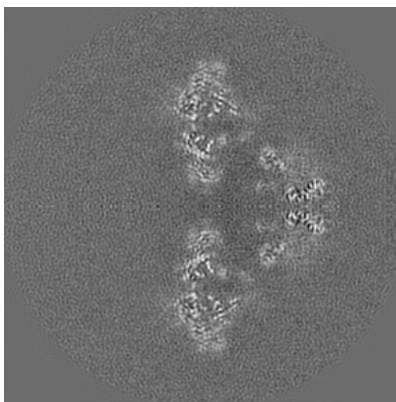
The images above show the map projected in three orthogonal directions.

6.2 Central slices [i](#)

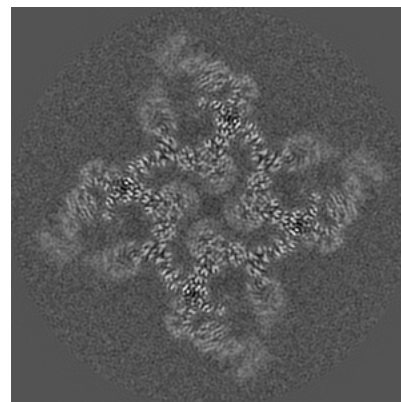
6.2.1 Primary map



X Index: 170

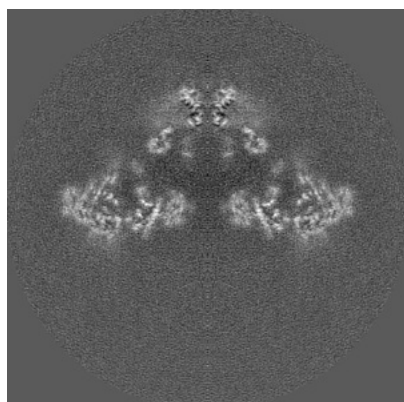


Y Index: 170

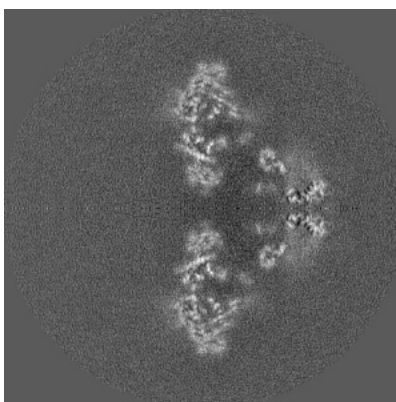


Z Index: 170

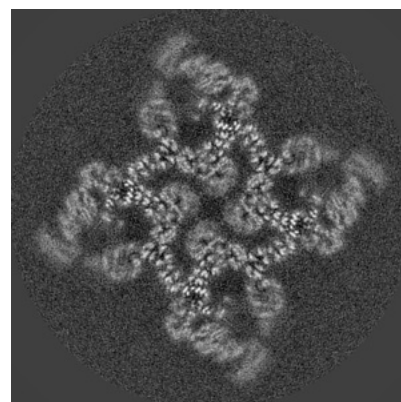
6.2.2 Raw map



X Index: 170



Y Index: 170

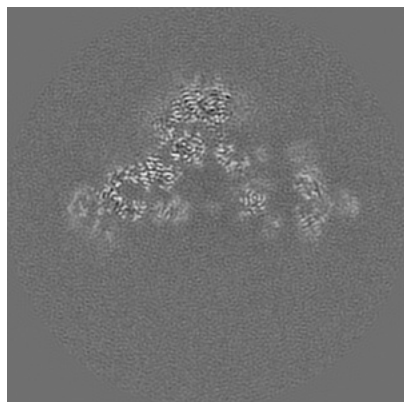


Z Index: 170

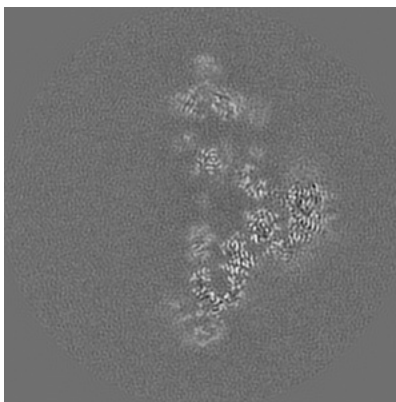
The images above show central slices of the map in three orthogonal directions.

6.3 Largest variance slices [i](#)

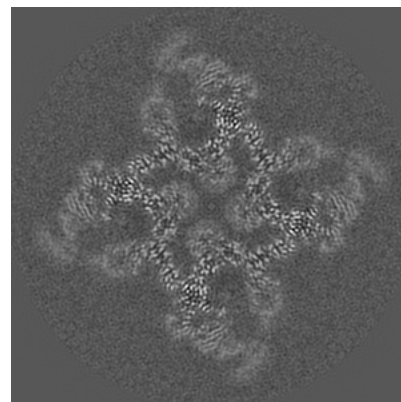
6.3.1 Primary map



X Index: 158

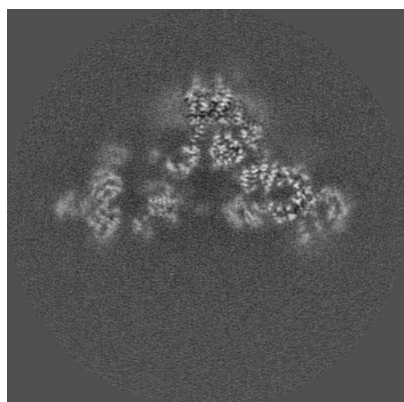


Y Index: 182

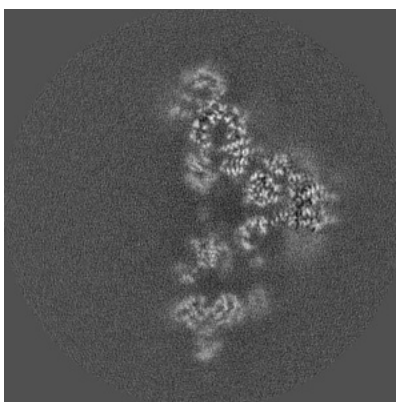


Z Index: 171

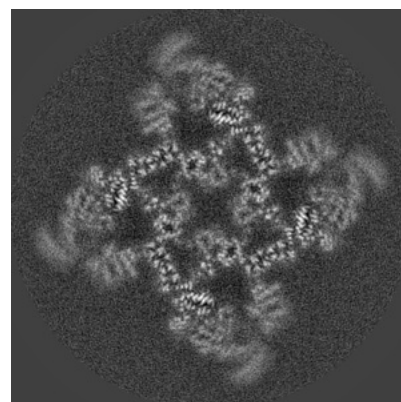
6.3.2 Raw map



X Index: 181



Y Index: 159

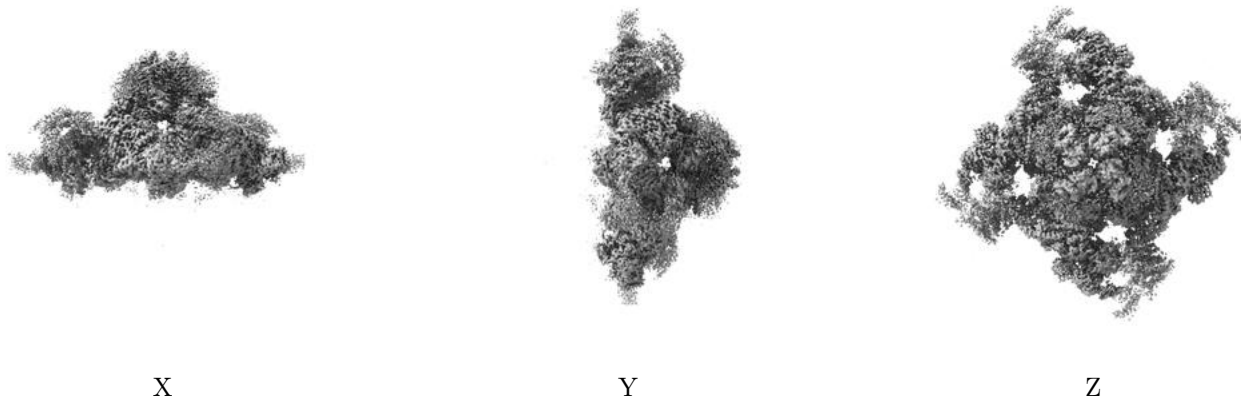


Z Index: 175

The images above show the largest variance slices of the map in three orthogonal directions.

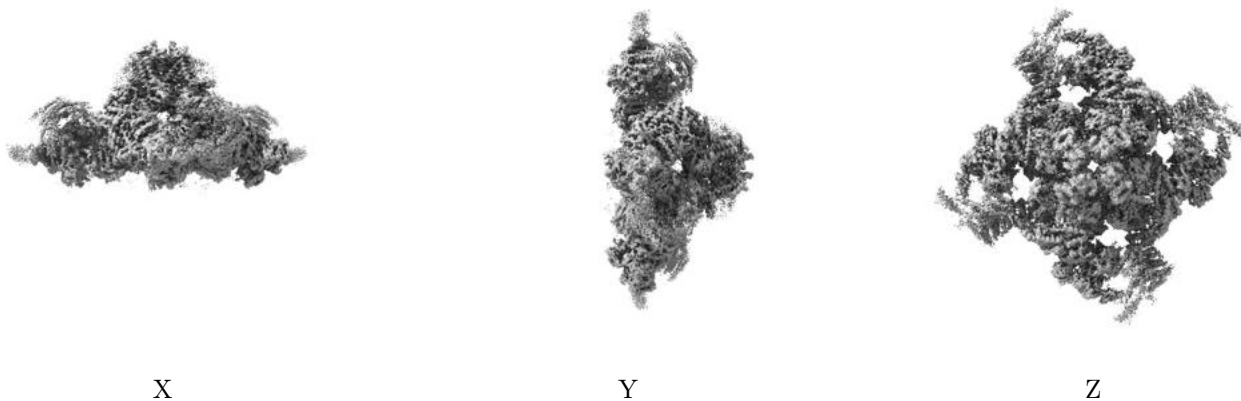
6.4 Orthogonal surface views [i](#)

6.4.1 Primary map



The images above show the 3D surface view of the map at the recommended contour level 0.021. These images, in conjunction with the slice images, may facilitate assessment of whether an appropriate contour level has been provided.

6.4.2 Raw map



These images show the 3D surface of the raw map. The raw map's contour level was selected so that its surface encloses the same volume as the primary map does at its recommended contour level.

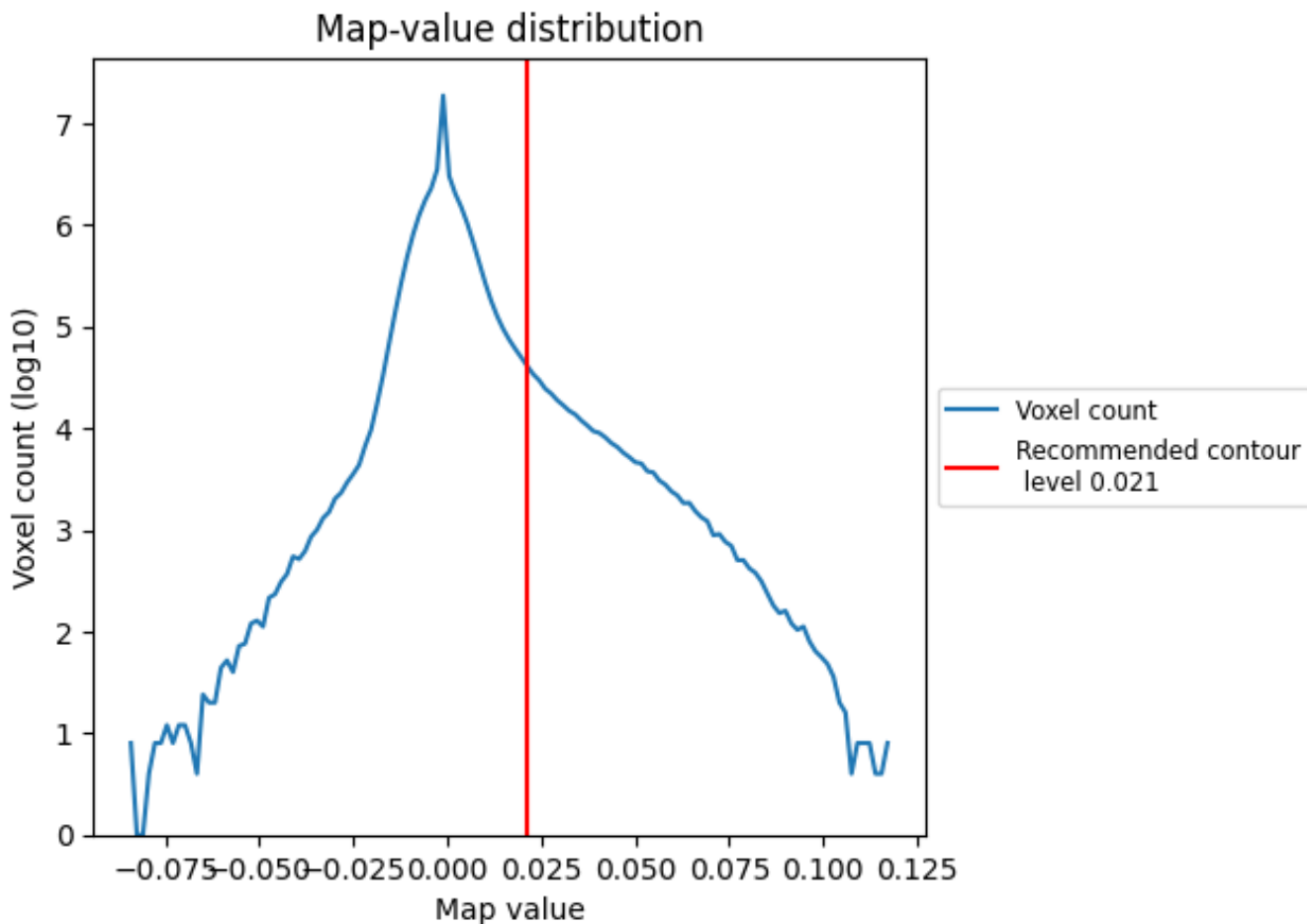
6.5 Mask visualisation [i](#)

This section was not generated. No masks/segmentation were deposited.

7 Map analysis [i](#)

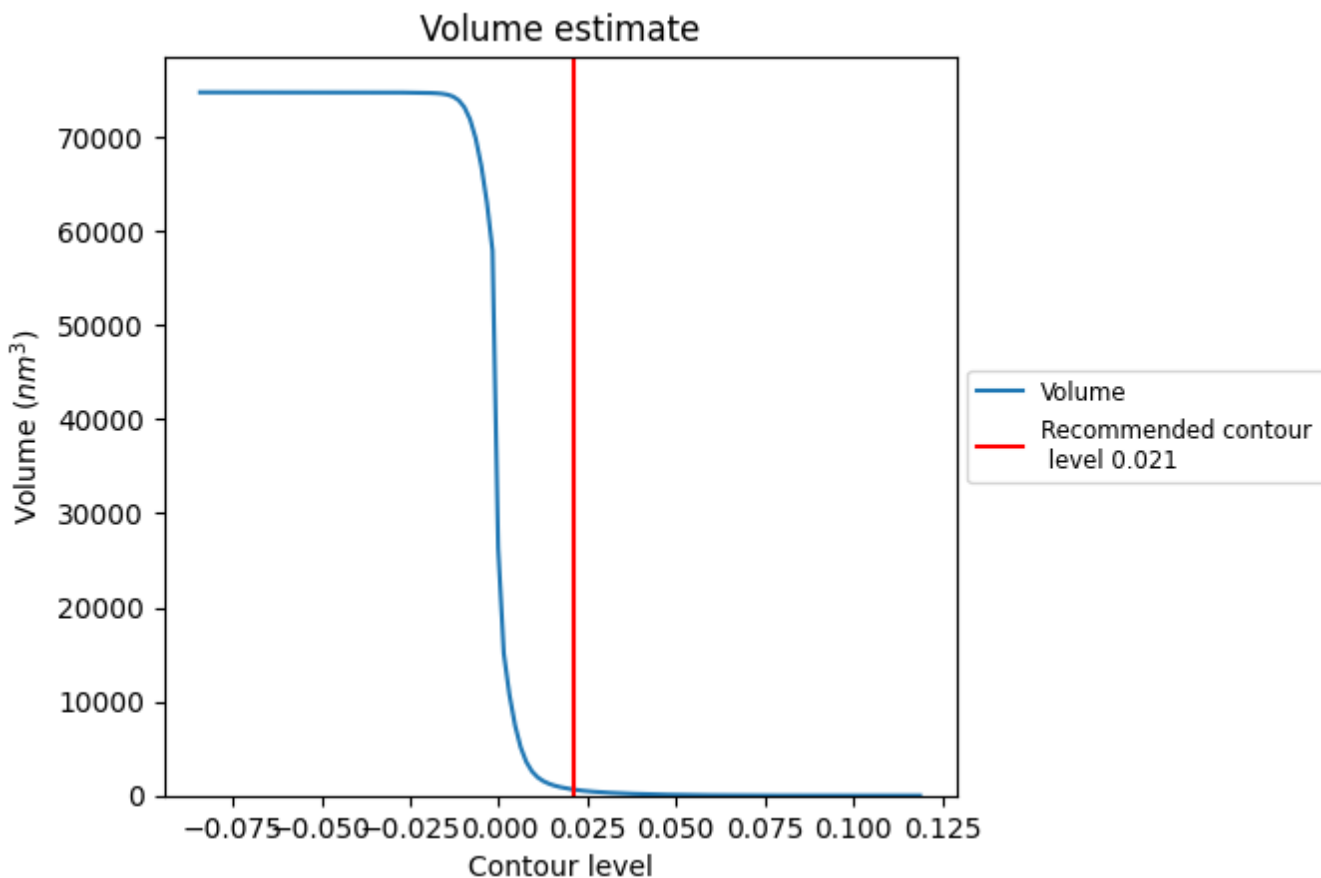
This section contains the results of statistical analysis of the map.

7.1 Map-value distribution [i](#)



The map-value distribution is plotted in 128 intervals along the x-axis. The y-axis is logarithmic. A spike in this graph at zero usually indicates that the volume has been masked.

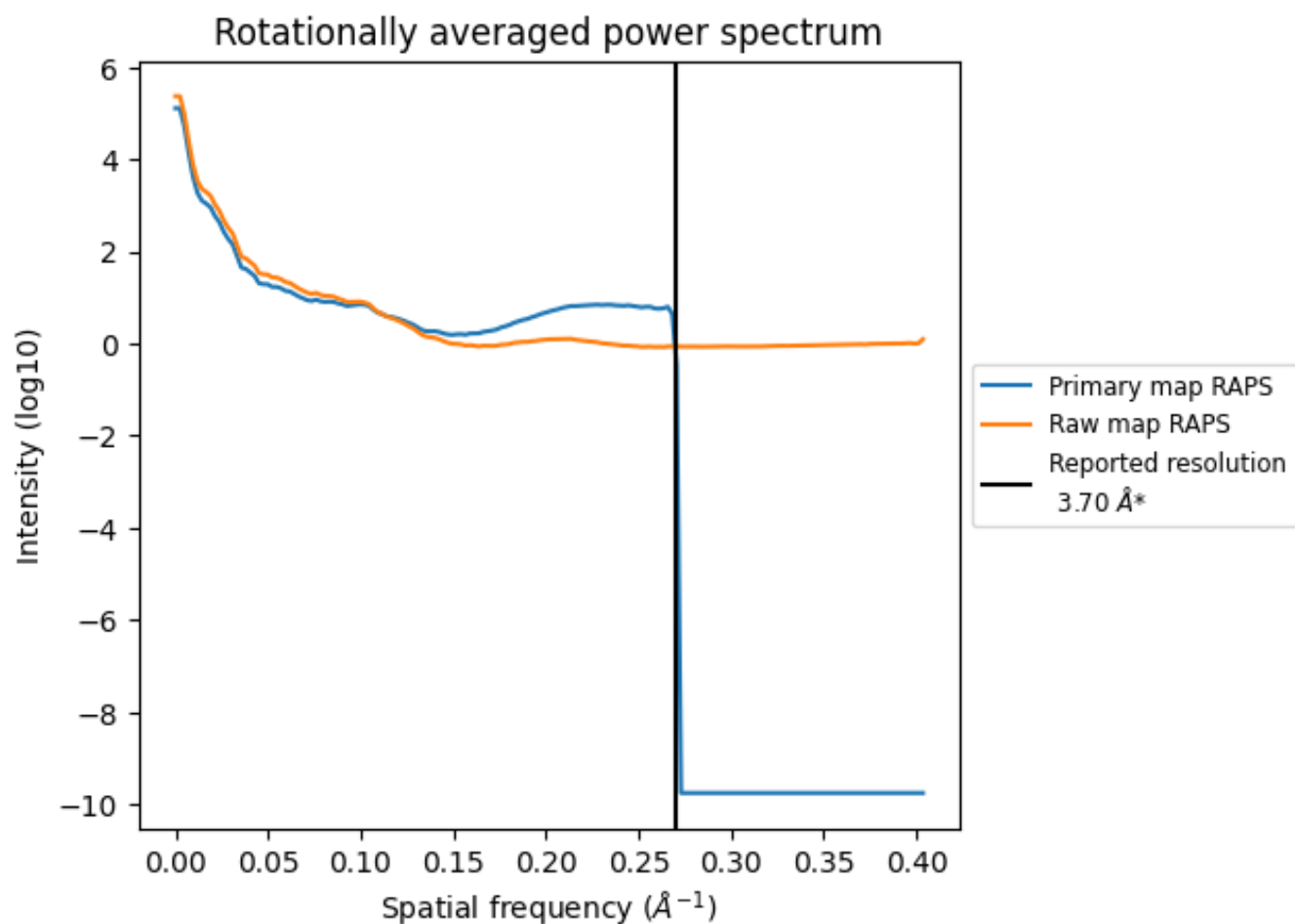
7.2 Volume estimate [\(i\)](#)



The volume at the recommended contour level is 646 nm³; this corresponds to an approximate mass of 584 kDa.

The volume estimate graph shows how the enclosed volume varies with the contour level. The recommended contour level is shown as a vertical line and the intersection between the line and the curve gives the volume of the enclosed surface at the given level.

7.3 Rotationally averaged power spectrum [i](#)

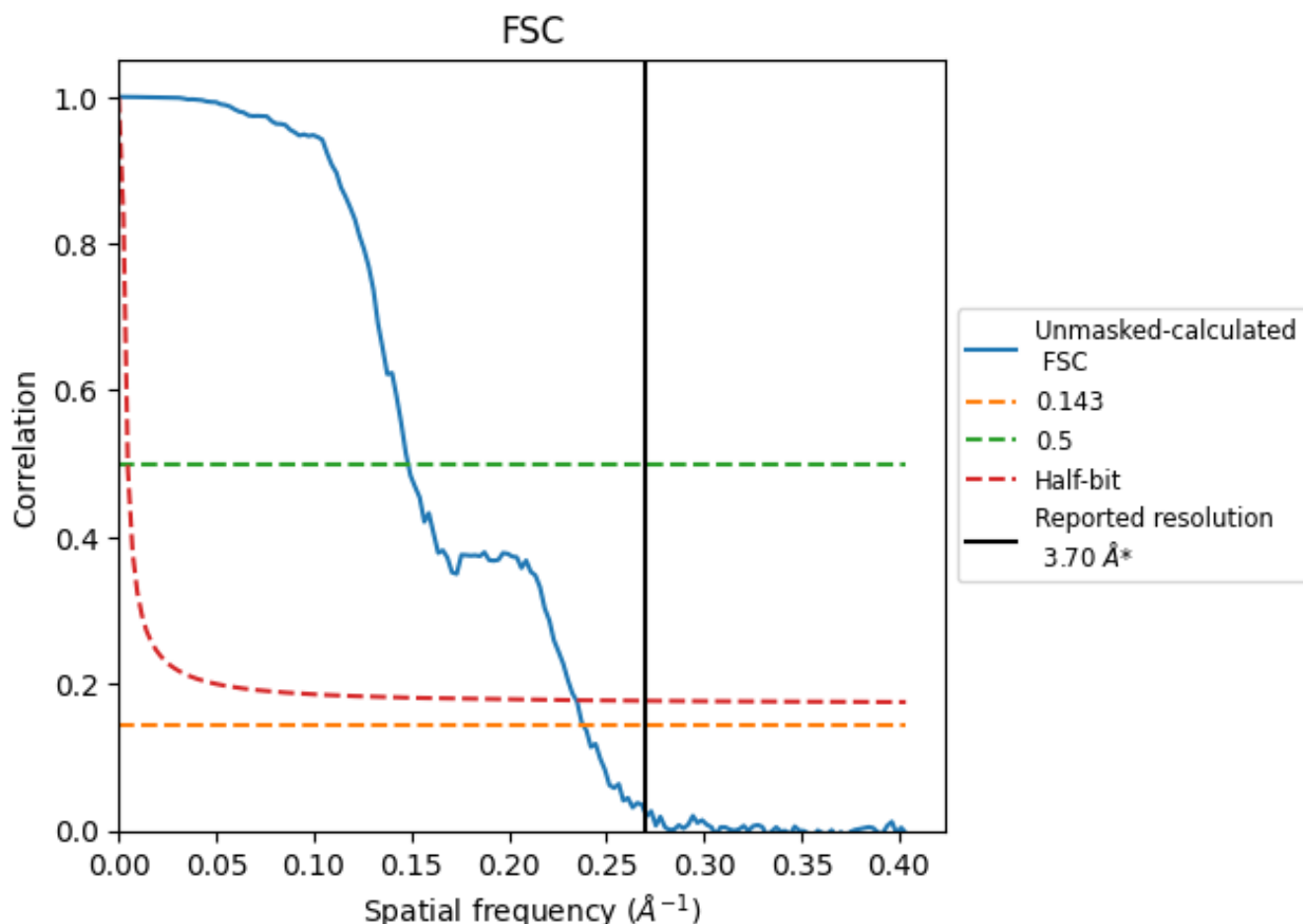


*Reported resolution corresponds to spatial frequency of 0.270 Å⁻¹

8 Fourier-Shell correlation [i](#)

Fourier-Shell Correlation (FSC) is the most commonly used method to estimate the resolution of single-particle and subtomogram-averaged maps. The shape of the curve depends on the imposed symmetry, mask and whether or not the two 3D reconstructions used were processed from a common reference. The reported resolution is shown as a black line. A curve is displayed for the half-bit criterion in addition to lines showing the 0.143 gold standard cut-off and 0.5 cut-off.

8.1 FSC [i](#)



*Reported resolution corresponds to spatial frequency of 0.270 Å⁻¹

8.2 Resolution estimates [i](#)

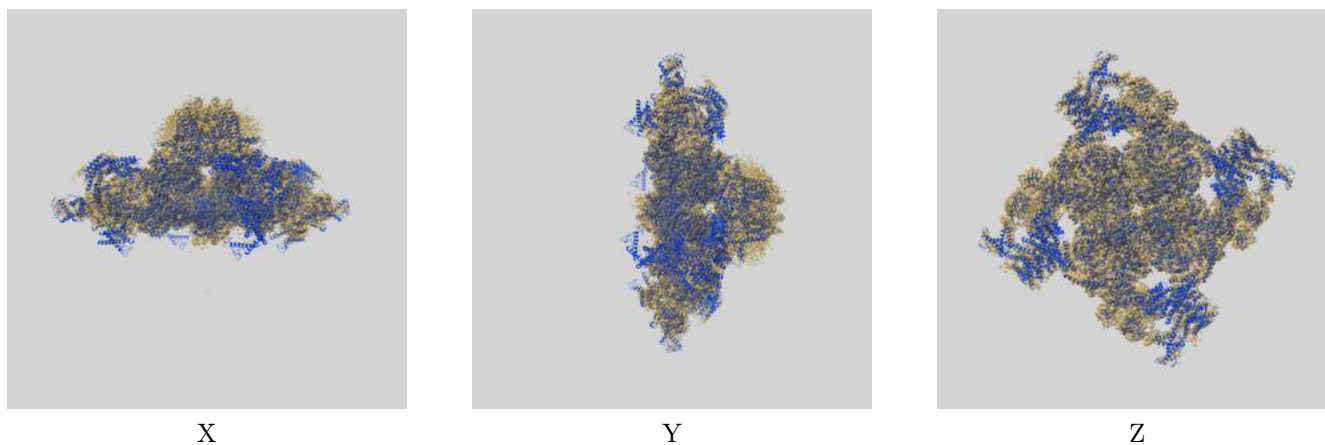
Resolution estimate (Å)	Estimation criterion (FSC cut-off)		
	0.143	0.5	Half-bit
Reported by author	3.70	-	-
Author-provided FSC curve	-	-	-
Unmasked-calculated*	4.20	6.74	4.26

*Resolution estimate based on FSC curve calculated by comparison of deposited half-maps. The value from deposited half-maps intersecting FSC 0.143 CUT-OFF 4.20 differs from the reported value 3.7 by more than 10 %

9 Map-model fit [i](#)

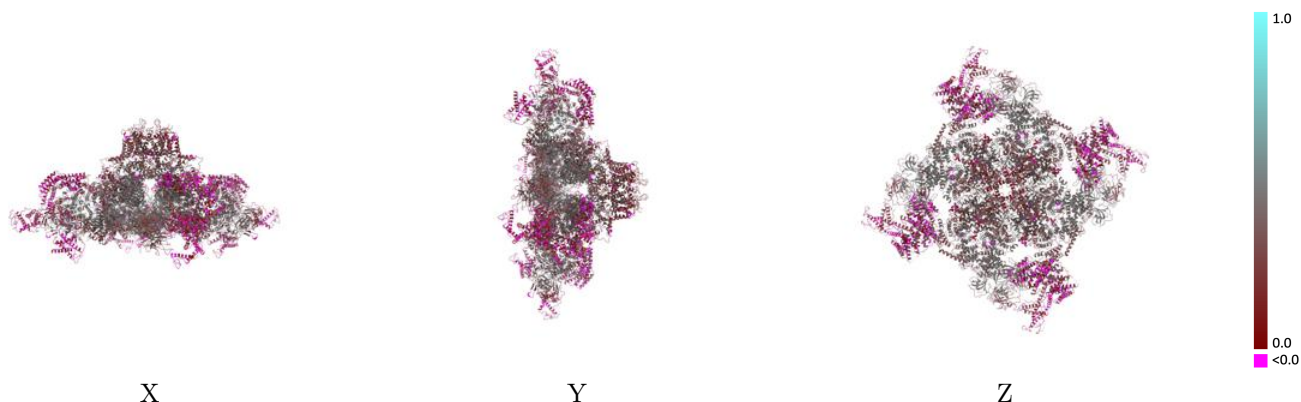
This section contains information regarding the fit between EMDB map EMD-33940 and PDB model 7VMQ. Per-residue inclusion information can be found in section [3](#) on page [11](#).

9.1 Map-model overlay [i](#)



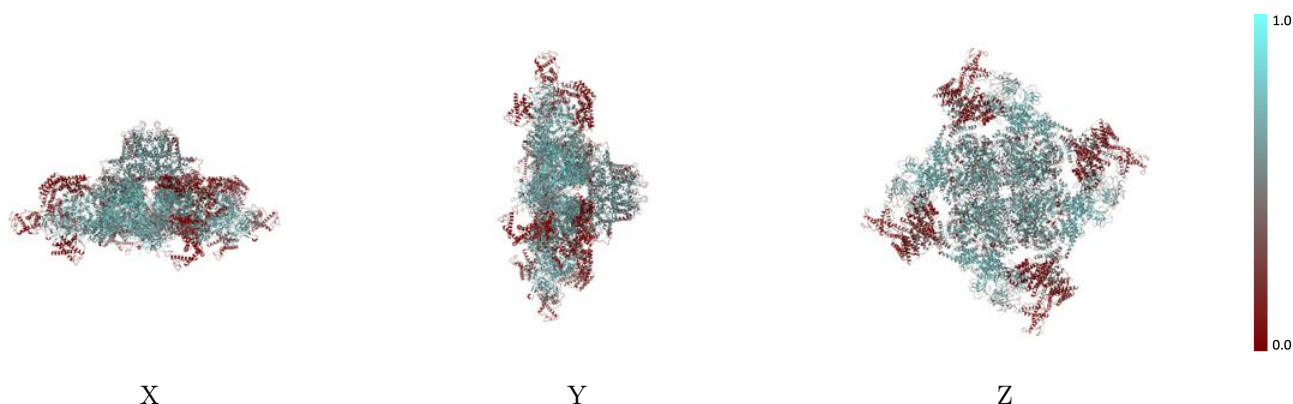
The images above show the 3D surface view of the map at the recommended contour level 0.021 at 50% transparency in yellow overlaid with a ribbon representation of the model coloured in blue. These images allow for the visual assessment of the quality of fit between the atomic model and the map.

9.2 Q-score mapped to coordinate model [\(i\)](#)



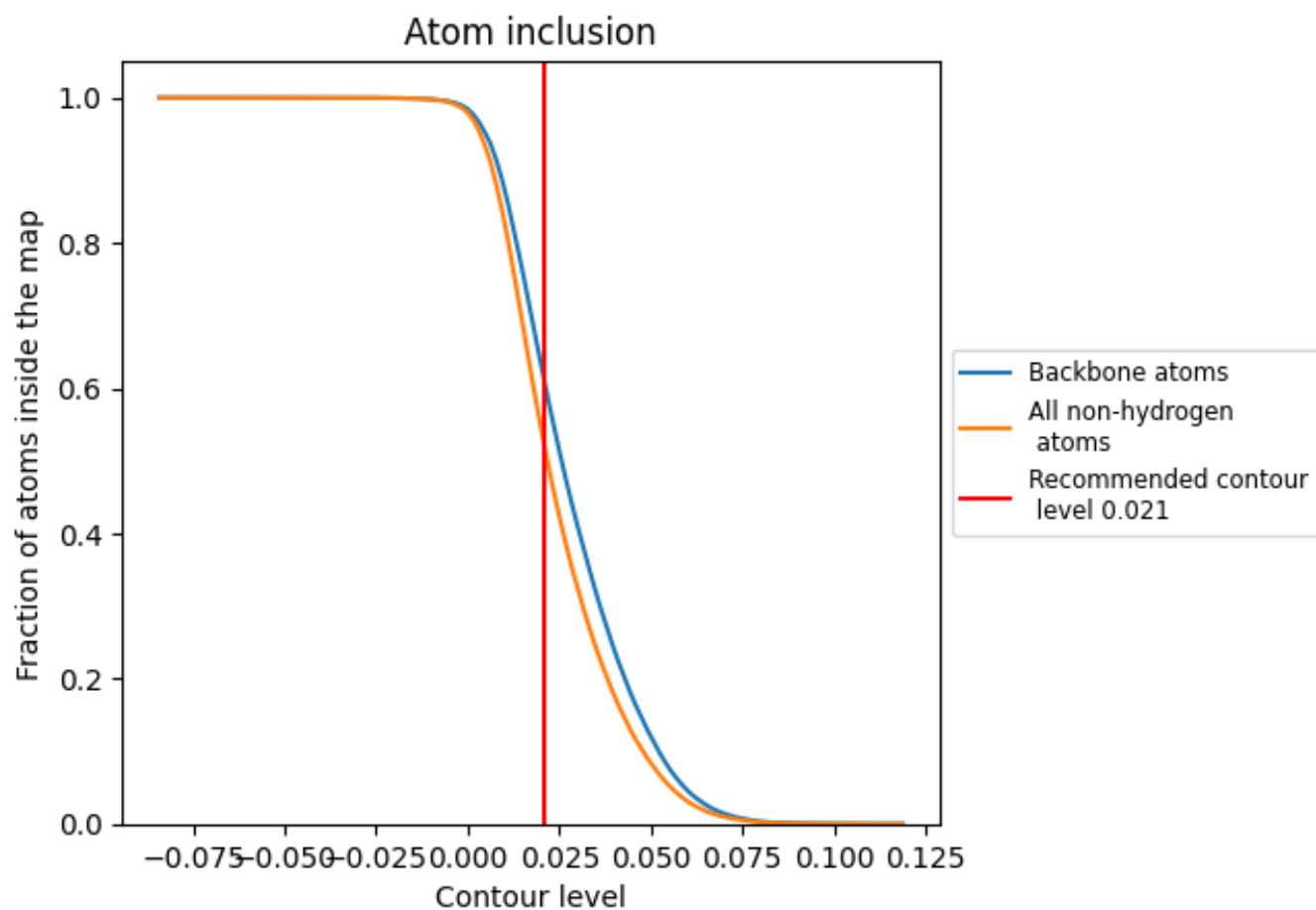
The images above show the model with each residue coloured according to its Q-score. This shows their resolvability in the map with higher Q-score values reflecting better resolvability. Please note: Q-score is calculating the resolvability of atoms, and thus high values are only expected at resolutions at which atoms can be resolved. Low Q-score values may therefore be expected for many entries.

9.3 Atom inclusion mapped to coordinate model [\(i\)](#)



The images above show the model with each residue coloured according to its atom inclusion. This shows to what extent they are inside the map at the recommended contour level (0.021).



















9.4 Atom inclusion [i](#)



At the recommended contour level, 61% of all backbone atoms, 52% of all non-hydrogen atoms, are inside the map.

9.5 Map-model fit summary

The table lists the average atom inclusion at the recommended contour level (0.021) and Q-score for the entire model and for each chain.

Chain	Atom inclusion	Q-score
All	 0.5185	 0.3060
A	 0.5166	 0.3040
B	 0.5156	 0.3050
C	 0.5145	 0.3020
D	 0.5153	 0.3030
G	 0.6245	 0.4110
H	 0.6245	 0.4140
I	 0.6320	 0.4170
J	 0.6332	 0.4150

