



# Full wwPDB X-ray Structure Validation Report ⓘ

Jan 6, 2025 – 02:14 PM EST

PDB ID : 8VNX  
Title : A structural study of selectivity mechanisms for JNK3 and p38 alpha with indazole scaffold probing compounds  
Authors : Park, H.; Feng, Y.  
Deposited on : 2024-01-13  
Resolution : 2.00 Å(reported)

This is a Full wwPDB X-ray Structure Validation Report for a publicly released PDB entry.

We welcome your comments at [validation@mail.wwpdb.org](mailto:validation@mail.wwpdb.org)

A user guide is available at

<https://www.wwpdb.org/validation/2017/XrayValidationReportHelp>

with specific help available everywhere you see the ⓘ symbol.

The types of validation reports are described at

<http://www.wwpdb.org/validation/2017/FAQs#types>.

---

The following versions of software and data (see [references ⓘ](#)) were used in the production of this report:

MolProbity : 4.02b-467  
Mogul : 2022.3.0, CSD as543be (2022)  
Xtriage (Phenix) : 1.21  
EDS : 3.0  
buster-report : 1.1.7 (2018)  
Percentile statistics : 20231227.v01 (using entries in the PDB archive December 27th 2023)  
CCP4 : 9.0.004 (Gargrove)  
Density-Fitness : 1.0.11  
Ideal geometry (proteins) : Engh & Huber (2001)  
Ideal geometry (DNA, RNA) : Parkinson et al. (1996)  
Validation Pipeline (wwPDB-VP) : 2.40

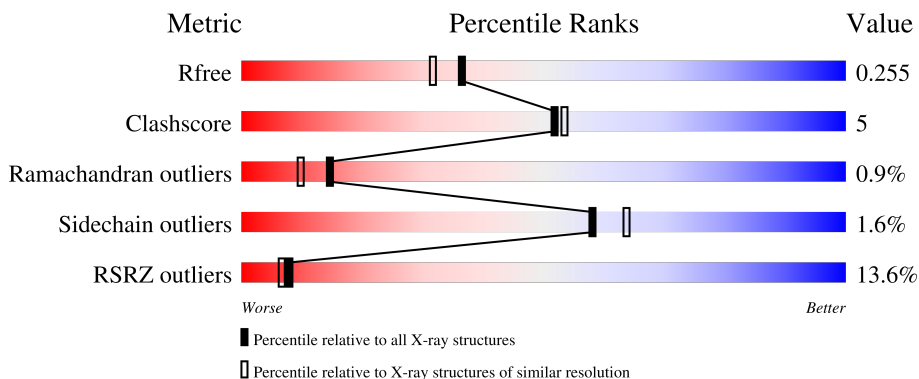
# 1 Overall quality at a glance

The following experimental techniques were used to determine the structure:

*X-RAY DIFFRACTION*

The reported resolution of this entry is 2.00 Å.

Percentile scores (ranging between 0-100) for global validation metrics of the entry are shown in the following graphic. The table shows the number of entries on which the scores are based.



Metric	Whole archive (#Entries)	Similar resolution (#Entries, resolution range(Å))
$R_{free}$	164625	9409 (2.00-2.00)
Clashscore	180529	10737 (2.00-2.00)
Ramachandran outliers	177936	10628 (2.00-2.00)
Sidechain outliers	177891	10627 (2.00-2.00)
RSRZ outliers	164620	9409 (2.00-2.00)

The table below summarises the geometric issues observed across the polymeric chains and their fit to the electron density. The red, orange, yellow and green segments of the lower bar indicate the fraction of residues that contain outliers for  $\geq 3$ , 2, 1 and 0 types of geometric quality criteria respectively. A grey segment represents the fraction of residues that are not modelled. The numeric value for each fraction is indicated below the corresponding segment, with a dot representing fractions  $\leq 5\%$ . The upper red bar (where present) indicates the fraction of residues that have poor fit to the electron density. The numeric value is given above the bar.

Mol	Chain	Length	Quality of chain
1	A	464	

## 2 Entry composition [i](#)

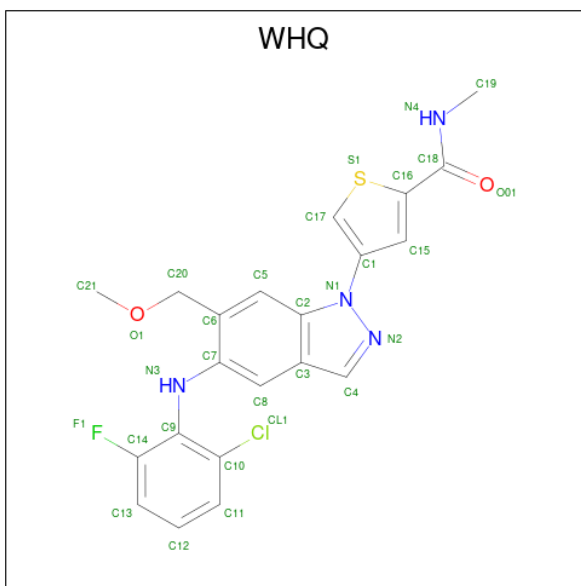
There are 3 unique types of molecules in this entry. The entry contains 5795 atoms, of which 2828 are hydrogens and 0 are deuteriums.

In the tables below, the ZeroOcc column contains the number of atoms modelled with zero occupancy, the AltConf column contains the number of residues with at least one atom in alternate conformation and the Trace column contains the number of residues modelled with at most 2 atoms.

- Molecule 1 is a protein called Mitogen-activated protein kinase 10.

Mol	Chain	Residues	Atoms						ZeroOcc	AltConf	Trace
			Total	C	H	N	O	S			
1	A	346	5614	1801	2810	474	507	22	0	1	0

- Molecule 2 is (4P)-4-[5-(2-chloro-6-fluoroanilino)-6-(methoxymethyl)-1H-indazol-1-yl]-N-methylthiophene-2-carboxamide (three-letter code: WHQ) (formula: C<sub>21</sub>H<sub>18</sub>ClFN<sub>4</sub>O<sub>2</sub>S) (labeled as "Ligand of Interest" by depositor).



Mol	Chain	Residues	Atoms						ZeroOcc	AltConf		
			Total	C	Cl	F	H	N			O	S
2	A	1	48	21	1	1	18	4	2	1	0	0

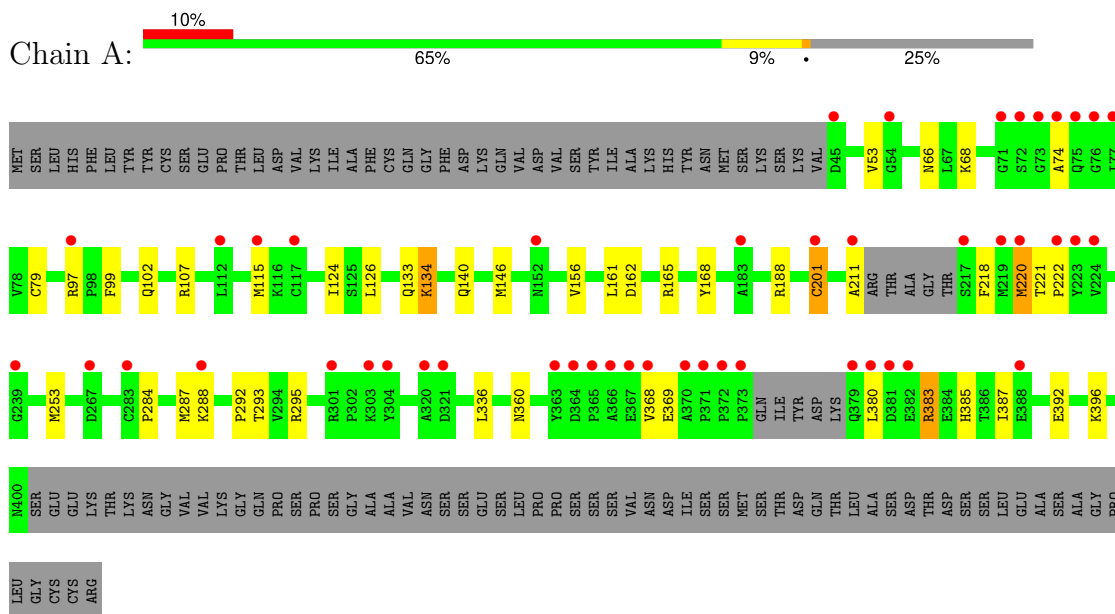
- Molecule 3 is water.

Mol	Chain	Residues	Atoms		ZeroOcc	AltConf
3	A	133	Total	O	0	0
			133	133		

### 3 Residue-property plots [i](#)

These plots are drawn for all protein, RNA, DNA and oligosaccharide chains in the entry. The first graphic for a chain summarises the proportions of the various outlier classes displayed in the second graphic. The second graphic shows the sequence view annotated by issues in geometry and electron density. Residues are color-coded according to the number of geometric quality criteria for which they contain at least one outlier: green = 0, yellow = 1, orange = 2 and red = 3 or more. A red dot above a residue indicates a poor fit to the electron density ( $RSRZ > 2$ ). Stretches of 2 or more consecutive residues without any outlier are shown as a green connector. Residues present in the sample, but not in the model, are shown in grey.

- Molecule 1: Mitogen-activated protein kinase 10



## 4 Data and refinement statistics

Property	Value	Source
Space group	P 21 21 21	Depositor
Cell constants a, b, c, $\alpha$ , $\beta$ , $\gamma$	52.22Å 71.21Å 107.74Å 90.00° 90.00° 90.00°	Depositor
Resolution (Å)	37.49 – 2.00 37.49 – 2.00	Depositor EDS
% Data completeness (in resolution range)	99.4 (37.49-2.00) 99.4 (37.49-2.00)	Depositor EDS
$R_{merge}$	(Not available)	Depositor
$R_{sym}$	(Not available)	Depositor
$\langle I/\sigma(I) \rangle$ <sup>1</sup>	3.99 (at 2.00Å)	Xtrriage
Refinement program	PHENIX 1.20.1_4487	Depositor
R, $R_{free}$	0.212 , 0.256 0.212 , 0.255	Depositor DCC
$R_{free}$ test set	1398 reflections (5.04%)	wwPDB-VP
Wilson B-factor (Å <sup>2</sup> )	28.0	Xtrriage
Anisotropy	1.039	Xtrriage
Bulk solvent $k_{sol}$ (e/Å <sup>3</sup> ), $B_{sol}$ (Å <sup>2</sup> )	0.37 , 36.1	EDS
L-test for twinning <sup>2</sup>	$\langle  L  \rangle = 0.49$ , $\langle L^2 \rangle = 0.32$	Xtrriage
Estimated twinning fraction	No twinning to report.	Xtrriage
$F_o, F_c$ correlation	0.94	EDS
Total number of atoms	5795	wwPDB-VP
Average B, all atoms (Å <sup>2</sup> )	46.0	wwPDB-VP

Xtrriage's analysis on translational NCS is as follows: *The largest off-origin peak in the Patterson function is 8.01% of the height of the origin peak. No significant pseudotranslation is detected.*

<sup>1</sup>Intensities estimated from amplitudes.

<sup>2</sup>Theoretical values of  $\langle |L| \rangle$ ,  $\langle L^2 \rangle$  for acentric reflections are 0.5, 0.333 respectively for untwinned datasets, and 0.375, 0.2 for perfectly twinned datasets.

## 5 Model quality [i](#)

### 5.1 Standard geometry [i](#)

Bond lengths and bond angles in the following residue types are not validated in this section: WHQ

The Z score for a bond length (or angle) is the number of standard deviations the observed value is removed from the expected value. A bond length (or angle) with  $|Z| > 5$  is considered an outlier worth inspection. RMSZ is the root-mean-square of all Z scores of the bond lengths (or angles).

Mol	Chain	Bond lengths		Bond angles	
		RMSZ	# $ Z  > 5$	RMSZ	# $ Z  > 5$
1	A	0.26	0/2868	0.53	1/3883 (0.0%)

There are no bond length outliers.

All (1) bond angle outliers are listed below:

Mol	Chain	Res	Type	Atoms	Z	Observed( $^{\circ}$ )	Ideal( $^{\circ}$ )
1	A	220	MET	CA-CB-CG	5.01	121.81	113.30

There are no chirality outliers.

There are no planarity outliers.

### 5.2 Too-close contacts [i](#)

In the following table, the Non-H and H(model) columns list the number of non-hydrogen atoms and hydrogen atoms in the chain respectively. The H(added) column lists the number of hydrogen atoms added and optimized by MolProbity. The Clashes column lists the number of clashes within the asymmetric unit, whereas Symm-Clashes lists symmetry-related clashes.

Mol	Chain	Non-H	H(model)	H(added)	Clashes	Symm-Clashes
1	A	2804	2810	2809	28	0
2	A	30	18	0	0	0
3	A	133	0	0	0	0
All	All	2967	2828	2809	28	0

The all-atom clashscore is defined as the number of clashes found per 1000 atoms (including hydrogen atoms). The all-atom clashscore for this structure is 5.

All (28) close contacts within the same asymmetric unit are listed below, sorted by their clash magnitude.

Atom-1	Atom-2	Interatomic distance (Å)	Clash overlap (Å)
1:A:156:VAL:HG12	1:A:161:LEU:HD11	1.79	0.64
1:A:102:GLN:NE2	1:A:385:HIS:O	2.33	0.62
1:A:220:MET:O	1:A:220:MET:HG3	2.03	0.59
1:A:115:MET:SD	1:A:126:LEU:HG	2.45	0.57
1:A:368:VAL:HG23	1:A:369:GLU:HG3	1.88	0.56
1:A:383:ARG:HD3	1:A:383:ARG:H	1.72	0.55
1:A:292:PRO:HD2	1:A:293:THR:H	1.75	0.51
1:A:284:PRO:O	1:A:288:LYS:HG3	2.10	0.51
1:A:134:LYS:N	1:A:134:LYS:HD3	2.27	0.50
1:A:188:ARG:NH2	1:A:211:ALA:O	2.41	0.49
1:A:102:GLN:HE22	1:A:385:HIS:H	1.59	0.49
1:A:134:LYS:H	1:A:134:LYS:HE2	1.79	0.47
1:A:162:ASP:OD1	1:A:165:ARG:HD2	2.15	0.47
1:A:66:ASN:OD1	1:A:68:LYS:HE3	2.16	0.46
1:A:53:VAL:HG11	1:A:79:CYS:SG	2.57	0.45
1:A:53:VAL:HG21	1:A:79:CYS:SG	2.56	0.45
1:A:134:LYS:N	1:A:134:LYS:CD	2.80	0.45
1:A:99:PHE:O	1:A:387:ILE:HG23	2.17	0.44
1:A:97:ARG:HA	1:A:140:GLN:O	2.17	0.44
1:A:392:GLU:CG	1:A:396:LYS:HD2	2.48	0.44
1:A:124:ILE:HD13	1:A:146:MET:SD	2.57	0.44
1:A:168:TYR:HD2	1:A:201:CYS:SG	2.41	0.43
1:A:97:ARG:NE	1:A:140:GLN:OE1	2.52	0.42
1:A:124:ILE:CD1	1:A:146:MET:SD	3.07	0.42
1:A:221:THR:HB	1:A:222:PRO:HD2	2.03	0.41
1:A:287:MET:O	1:A:295:ARG:HD2	2.21	0.41
1:A:133:GLN:HA	1:A:134:LYS:HD3	2.01	0.41
1:A:253:MET:HG2	1:A:336:LEU:HD21	2.02	0.41

There are no symmetry-related clashes.

## 5.3 Torsion angles [i](#)

### 5.3.1 Protein backbone [i](#)

In the following table, the Percentiles column shows the percent Ramachandran outliers of the chain as a percentile score with respect to all X-ray entries followed by that with respect to entries of similar resolution.

The Analysed column shows the number of residues for which the backbone conformation was analysed, and the total number of residues.

Mol	Chain	Analysed	Favoured	Allowed	Outliers	Percentiles
1	A	341/464 (74%)	317 (93%)	21 (6%)	3 (1%)	14 10

All (3) Ramachandran outliers are listed below:

Mol	Chain	Res	Type
1	A	74	ALA
1	A	218	PHE
1	A	380	LEU

### 5.3.2 Protein sidechains [i](#)

In the following table, the Percentiles column shows the percent sidechain outliers of the chain as a percentile score with respect to all X-ray entries followed by that with respect to entries of similar resolution.

The Analysed column shows the number of residues for which the sidechain conformation was analysed, and the total number of residues.

Mol	Chain	Analysed	Rotameric	Outliers	Percentiles
1	A	311/416 (75%)	306 (98%)	5 (2%)	58 64

All (5) residues with a non-rotameric sidechain are listed below:

Mol	Chain	Res	Type
1	A	107	ARG
1	A	134	LYS
1	A	201	CYS
1	A	360	ASN
1	A	383	ARG

Sometimes sidechains can be flipped to improve hydrogen bonding and reduce clashes. All (2) such sidechains are listed below:

Mol	Chain	Res	Type
1	A	47	GLN
1	A	102	GLN

### 5.3.3 RNA [i](#)

There are no RNA molecules in this entry.



## 5.4 Non-standard residues in protein, DNA, RNA chains [i](#)

There are no non-standard protein/DNA/RNA residues in this entry.

## 5.5 Carbohydrates [i](#)

There are no oligosaccharides in this entry.

## 5.6 Ligand geometry [i](#)

1 ligand is modelled in this entry.

In the following table, the Counts columns list the number of bonds (or angles) for which Mogul statistics could be retrieved, the number of bonds (or angles) that are observed in the model and the number of bonds (or angles) that are defined in the Chemical Component Dictionary. The Link column lists molecule types, if any, to which the group is linked. The Z score for a bond length (or angle) is the number of standard deviations the observed value is removed from the expected value. A bond length (or angle) with  $|Z| > 2$  is considered an outlier worth inspection. RMSZ is the root-mean-square of all Z scores of the bond lengths (or angles).

Mol	Type	Chain	Res	Link	Bond lengths			Bond angles		
					Counts	RMSZ	# Z  > 2	Counts	RMSZ	# Z  > 2
2	WHQ	A	501	-	29,33,33	3.76	11 (37%)	33,47,47	3.64	10 (30%)

In the following table, the Chirals column lists the number of chiral outliers, the number of chiral centers analysed, the number of these observed in the model and the number defined in the Chemical Component Dictionary. Similar counts are reported in the Torsion and Rings columns. '-' means no outliers of that kind were identified.

Mol	Type	Chain	Res	Link	Chirals	Torsions	Rings
2	WHQ	A	501	-	-	1/11/17/17	0/4/4/4

All (11) bond length outliers are listed below:

Mol	Chain	Res	Type	Atoms	Z	Observed(Å)	Ideal(Å)
2	A	501	WHQ	C18-N4	8.64	1.45	1.33
2	A	501	WHQ	C9-C10	8.60	1.52	1.40
2	A	501	WHQ	C12-C11	7.81	1.52	1.38
2	A	501	WHQ	C13-C14	7.27	1.52	1.37
2	A	501	WHQ	C17-C1	6.64	1.41	1.37
2	A	501	WHQ	C9-C14	-4.04	1.33	1.38
2	A	501	WHQ	C12-C13	-4.04	1.32	1.38
2	A	501	WHQ	C16-S1	3.45	1.76	1.72

*Continued on next page...*

*Continued from previous page...*

Mol	Chain	Res	Type	Atoms	Z	Observed(Å)	Ideal(Å)
2	A	501	WHQ	C11-C10	-3.45	1.32	1.38
2	A	501	WHQ	N2-N1	-3.30	1.33	1.39
2	A	501	WHQ	C7-N3	2.22	1.46	1.39

All (10) bond angle outliers are listed below:

Mol	Chain	Res	Type	Atoms	Z	Observed(°)	Ideal(°)
2	A	501	WHQ	C15-C1-C17	15.37	113.57	106.05
2	A	501	WHQ	C1-N1-C2	-7.87	120.51	130.13
2	A	501	WHQ	C16-C18-N4	5.52	119.47	115.61
2	A	501	WHQ	C5-C2-N1	5.22	137.27	131.99
2	A	501	WHQ	C6-C7-N3	4.22	122.03	118.59
2	A	501	WHQ	C3-C2-N1	-4.00	100.96	107.97
2	A	501	WHQ	F1-C14-C9	3.87	121.65	117.64
2	A	501	WHQ	C10-C9-N3	-2.64	118.49	121.97
2	A	501	WHQ	C20-C6-C5	-2.11	118.03	121.72
2	A	501	WHQ	C9-N3-C7	-2.07	118.54	123.02

There are no chirality outliers.

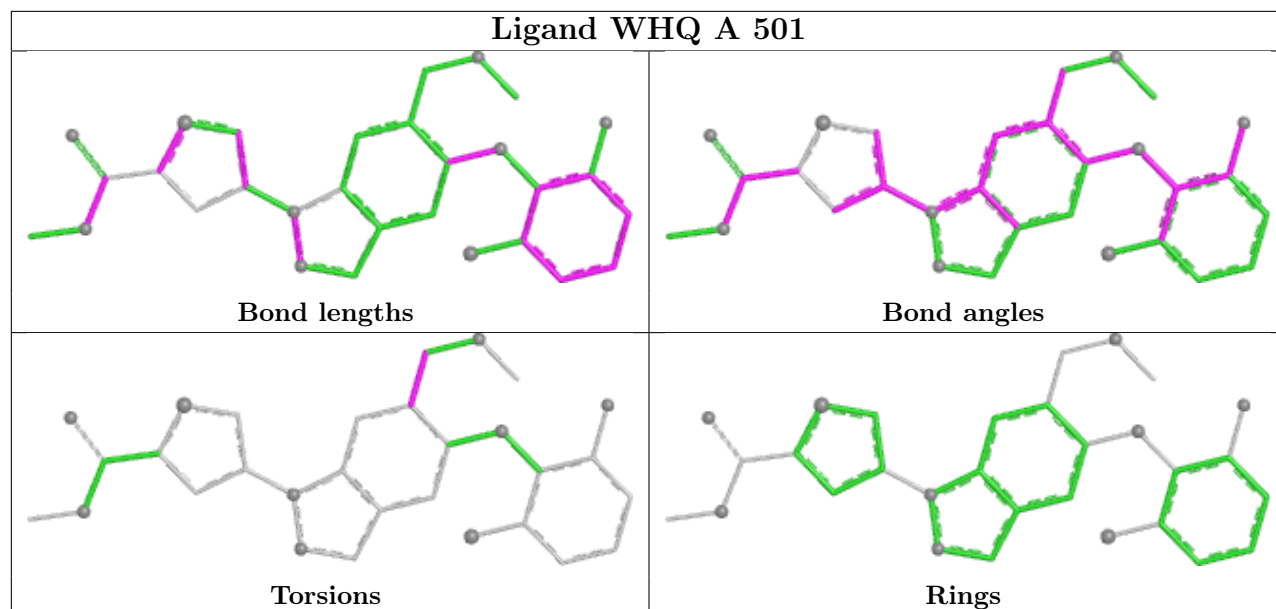
All (1) torsion outliers are listed below:

Mol	Chain	Res	Type	Atoms
2	A	501	WHQ	O1-C20-C6-C7

There are no ring outliers.

No monomer is involved in short contacts.

The following is a two-dimensional graphical depiction of Mogul quality analysis of bond lengths, bond angles, torsion angles, and ring geometry for all instances of the Ligand of Interest. In addition, ligands with molecular weight > 250 and outliers as shown on the validation Tables will also be included. For torsion angles, if less than 5% of the Mogul distribution of torsion angles is within 10 degrees of the torsion angle in question, then that torsion angle is considered an outlier. Any bond that is central to one or more torsion angles identified as an outlier by Mogul will be highlighted in the graph. For rings, the root-mean-square deviation (RMSD) between the ring in question and similar rings identified by Mogul is calculated over all ring torsion angles. If the average RMSD is greater than 60 degrees and the minimal RMSD between the ring in question and any Mogul-identified rings is also greater than 60 degrees, then that ring is considered an outlier. The outliers are highlighted in purple. The color gray indicates Mogul did not find sufficient equivalents in the CSD to analyse the geometry.



## 5.7 Other polymers [i](#)

There are no such residues in this entry.

## 5.8 Polymer linkage issues [i](#)

There are no chain breaks in this entry.

## 6 Fit of model and data

### 6.1 Protein, DNA and RNA chains

In the following table, the column labelled ‘#RSRZ > 2’ contains the number (and percentage) of RSRZ outliers, followed by percent RSRZ outliers for the chain as percentile scores relative to all X-ray entries and entries of similar resolution. The OWAB column contains the minimum, median, 95<sup>th</sup> percentile and maximum values of the occupancy-weighted average B-factor per residue. The column labelled ‘Q < 0.9’ lists the number of (and percentage) of residues with an average occupancy less than 0.9.

Mol	Chain	Analysed	<RSRZ>	#RSRZ>2	OWAB(Å <sup>2</sup> )	Q<0.9
1	A	346/464 (74%)	0.78	47 (13%) <b>8</b> <b>7</b>	18, 40, 104, 170	1 (0%)

All (47) RSRZ outliers are listed below:

Mol	Chain	Res	Type	RSRZ
1	A	74	ALA	9.6
1	A	75	GLN	6.4
1	A	76	GLY	5.8
1	A	380	LEU	5.1
1	A	223	TYR	5.0
1	A	72	SER	4.5
1	A	368	VAL	4.3
1	A	367	GLU	4.2
1	A	363	TYR	4.2
1	A	373	PRO	4.2
1	A	379	GLN	4.1
1	A	371	PRO	4.1
1	A	73	GLY	4.0
1	A	71	GLY	4.0
1	A	370	ALA	3.9
1	A	382	GLU	3.9
1	A	304	TYR	3.7
1	A	303	LYS	3.5
1	A	366	ALA	3.4
1	A	201	CYS	3.2
1	A	224	VAL	3.2
1	A	45	ASP	3.1
1	A	183	ALA	3.0
1	A	320	ALA	3.0
1	A	283	CYS	2.9
1	A	115	MET	2.8
1	A	365	PRO	2.7

*Continued on next page...*

*Continued from previous page...*

Mol	Chain	Res	Type	RSRZ
1	A	211	ALA	2.6
1	A	77	ILE	2.6
1	A	364	ASP	2.6
1	A	381	ASP	2.6
1	A	372	PRO	2.6
1	A	217	SER	2.5
1	A	222	PRO	2.5
1	A	117	CYS	2.4
1	A	54	GLY	2.4
1	A	288	LYS	2.3
1	A	112	LEU	2.3
1	A	321	ASP	2.2
1	A	388	GLU	2.2
1	A	97	ARG	2.2
1	A	301	ARG	2.2
1	A	220	MET	2.2
1	A	239	GLY	2.1
1	A	267	ASP	2.1
1	A	152	ASN	2.0
1	A	219	MET	2.0

## 6.2 Non-standard residues in protein, DNA, RNA chains [i](#)

There are no non-standard protein/DNA/RNA residues in this entry.

## 6.3 Carbohydrates [i](#)

There are no monosaccharides in this entry.

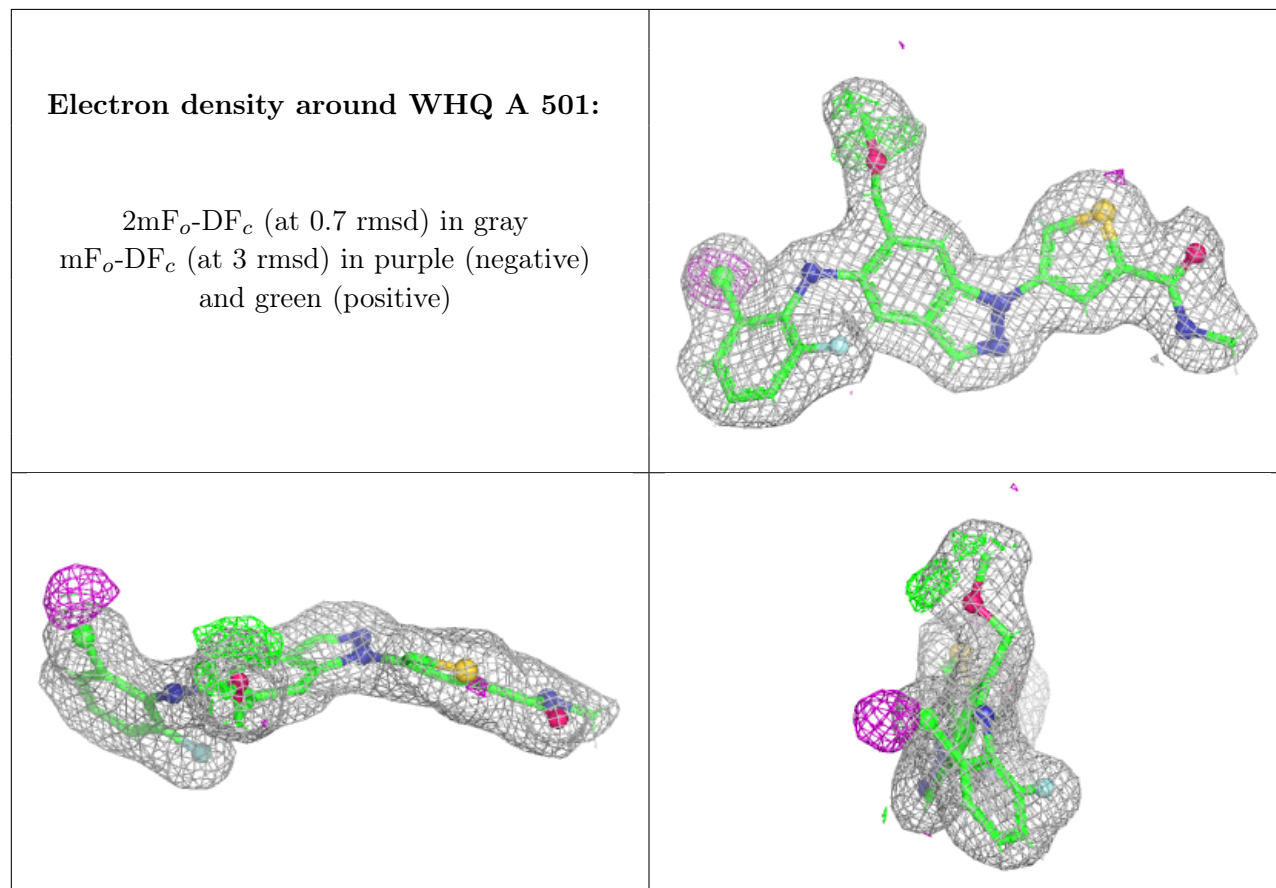
## 6.4 Ligands [i](#)

In the following table, the Atoms column lists the number of modelled atoms in the group and the number defined in the chemical component dictionary. The B-factors column lists the minimum, median, 95<sup>th</sup> percentile and maximum values of B factors of atoms in the group. The column labelled 'Q< 0.9' lists the number of atoms with occupancy less than 0.9.

Mol	Type	Chain	Res	Atoms	RSCC	RSR	B-factors(Å <sup>2</sup> )	Q<0.9
2	WHQ	A	501	30/30	0.92	0.09	22,28,46,54	0

The following is a graphical depiction of the model fit to experimental electron density of all

instances of the Ligand of Interest. In addition, ligands with molecular weight > 250 and outliers as shown on the geometry validation Tables will also be included. Each fit is shown from different orientation to approximate a three-dimensional view.



## 6.5 Other polymers [i](#)

There are no such residues in this entry.