



# wwPDB EM Validation Summary Report ⓘ

Oct 15, 2024 – 03:19 AM EDT

PDB ID : 8VRB  
EMDB ID : EMD-43480  
Title : Structure of a synthetic antibody in complex with a class I MHC presenting a hapten-peptide conjugate  
Authors : Maso, L.; Bang, I.; Koide, S.  
Deposited on : 2024-01-20  
Resolution : 3.25 Å(reported)

This is a wwPDB EM Validation Summary Report for a publicly released PDB entry.

We welcome your comments at [validation@mail.wwpdb.org](mailto:validation@mail.wwpdb.org)

A user guide is available at

<https://www.wwpdb.org/validation/2017/EMValidationReportHelp>

with specific help available everywhere you see the ⓘ symbol.

The types of validation reports are described at

<http://www.wwpdb.org/validation/2017/FAQs#types>.

---

The following versions of software and data (see [references ⓘ](#)) were used in the production of this report:

EMDB validation analysis : 0.0.1.dev113  
Mogul : 2022.3.0, CSD as543be (2022)  
MolProbity : 4.02b-467  
buster-report : 1.1.7 (2018)  
Percentile statistics : 20231227.v01 (using entries in the PDB archive December 27th 2023)  
MapQ : 1.9.13  
Ideal geometry (proteins) : Engh & Huber (2001)  
Ideal geometry (DNA, RNA) : Parkinson et al. (1996)  
Validation Pipeline (wwPDB-VP) : 2.39

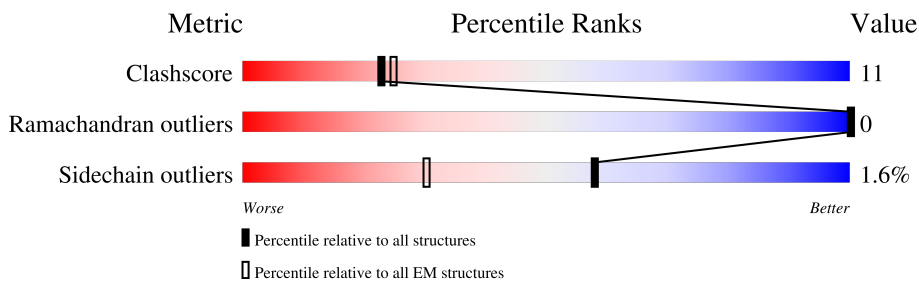
# 1 Overall quality at a glance

The following experimental techniques were used to determine the structure:

*ELECTRON MICROSCOPY*

The reported resolution of this entry is 3.25 Å.

Percentile scores (ranging between 0-100) for global validation metrics of the entry are shown in the following graphic. The table shows the number of entries on which the scores are based.



Metric	Whole archive (#Entries)	EM structures (#Entries)
Clashscore	210492	15764
Ramachandran outliers	207382	16835
Sidechain outliers	206894	16415

The table below summarises the geometric issues observed across the polymeric chains and their fit to the map. The red, orange, yellow and green segments of the bar indicate the fraction of residues that contain outliers for  $\geq 3$ , 2, 1 and 0 types of geometric quality criteria respectively. A grey segment represents the fraction of residues that are not modelled. The numeric value for each fraction is indicated below the corresponding segment, with a dot representing fractions  $\leq 5\%$ . The upper red bar (where present) indicates the fraction of residues that have poor fit to the EM map (all-atom inclusion  $< 40\%$ ). The numeric value is given above the bar.

Mol	Chain	Length	Quality of chain
1	A	274	
2	B	100	
3	C	10	
4	D	216	
5	E	228	

## 2 Entry composition [i](#)

There are 6 unique types of molecules in this entry. The entry contains 4843 atoms, of which 0 are hydrogens and 0 are deuteriums.

In the tables below, the AltConf column contains the number of residues with at least one atom in alternate conformation and the Trace column contains the number of residues modelled with at most 2 atoms.

- Molecule 1 is a protein called HLA-A antigen.

Mol	Chain	Residues	Atoms					AltConf	Trace
			Total	C	N	O	S		
1	A	274	2235	1389	407	430	9	0	0

- Molecule 2 is a protein called Beta-2-microglobulin.

Mol	Chain	Residues	Atoms					AltConf	Trace
			Total	C	N	O	S		
2	B	99	828	528	140	157	3	0	0

- Molecule 3 is a protein called GTPase KRas, N-terminally processed.

Mol	Chain	Residues	Atoms					AltConf	Trace
			Total	C	N	O	S		
3	C	10	60	38	11	10	1	0	0

There is a discrepancy between the modelled and reference sequences:

Chain	Residue	Modelled	Actual	Comment	Reference
C	12	CYS	GLY	variant	UNP P01116

- Molecule 4 is a protein called R023 Fab light chain.

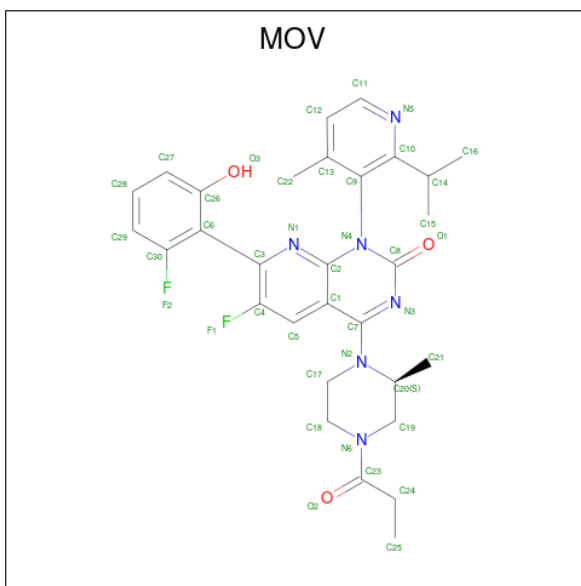
Mol	Chain	Residues	Atoms					AltConf	Trace
			Total	C	N	O	S		
4	D	106	803	504	136	160	3	0	0

- Molecule 5 is a protein called R023 Fab heavy chain.

Mol	Chain	Residues	Atoms					AltConf	Trace
			Total	C	N	O	S		
5	E	117	876	551	148	173	4	0	0

- Molecule 6 is AMG 510 (bound form) (three-letter code: MOV) (formula: C<sub>30</sub>H<sub>32</sub>F<sub>2</sub>N<sub>6</sub>O<sub>3</sub>)

(labeled as "Ligand of Interest" by depositor).

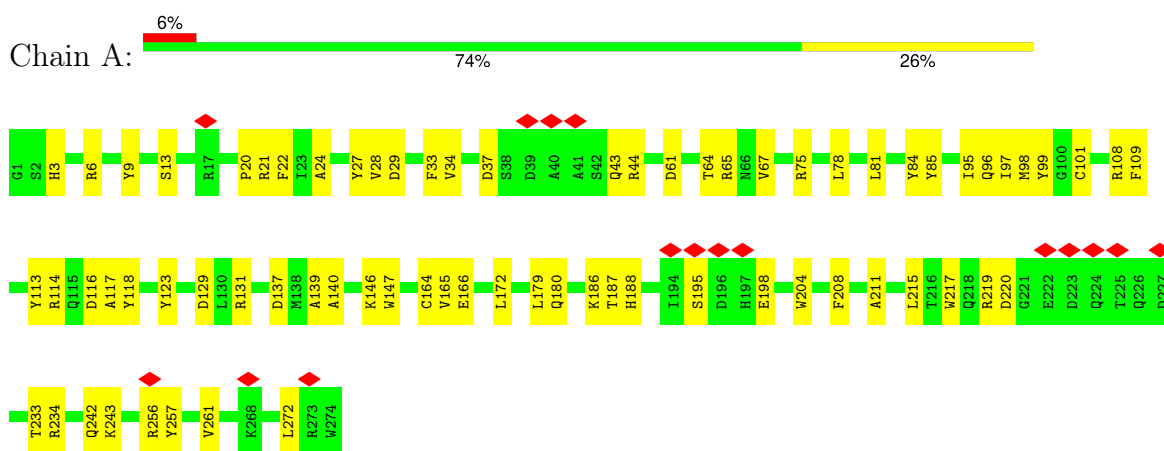


Mol	Chain	Residues	Atoms					AltConf
			Total	C	F	N	O	
6	E	1	41	30	2	6	3	0

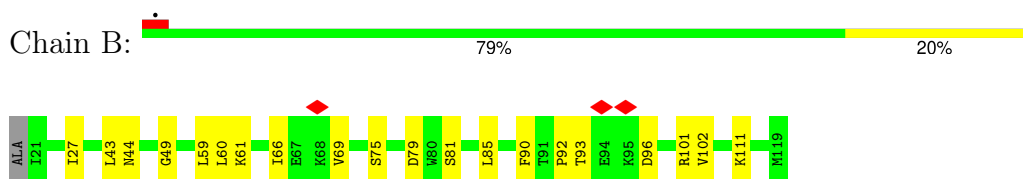
### 3 Residue-property plots

These plots are drawn for all protein, RNA, DNA and oligosaccharide chains in the entry. The first graphic for a chain summarises the proportions of the various outlier classes displayed in the second graphic. The second graphic shows the sequence view annotated by issues in geometry and atom inclusion in map density. Residues are color-coded according to the number of geometric quality criteria for which they contain at least one outlier: green = 0, yellow = 1, orange = 2 and red = 3 or more. A red diamond above a residue indicates a poor fit to the EM map for this residue (all-atom inclusion < 40%). Stretches of 2 or more consecutive residues without any outlier are shown as a green connector. Residues present in the sample, but not in the model, are shown in grey.

- Molecule 1: HLA-A antigen



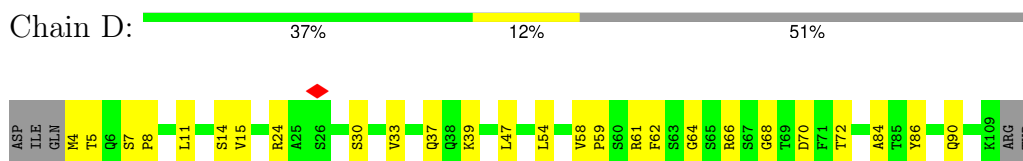
- Molecule 2: Beta-2-microglobulin



- Molecule 3: GTPase KRas, N-terminally processed



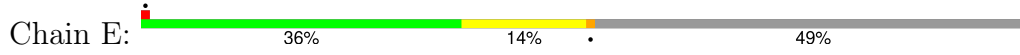
- Molecule 4: R023 Fab light chain



VAL PHE SER  
 SER ILE PHE  
 THR LEU PRO  
 PRO SER ASP  
 SER ASP GLN  
 LEU ASP LEU  
 LYS TYR LYS  
 SER GLY THR  
 GLY HIS THR  
 ALA LYS VAL  
 THR SER VAL  
 VAL TYR VAL  
 CYS CYS LEU  
 LEU VAL VAL  
 THR ASN THR  
 ASN PHE THR  
 TYR ASN PHE  
 TYR PRO TYR  
 ARG SER ARG  
 LEU SER GLU  
 PRO ALA ALA  
 LYS VAL LYS  
 VAL THR VAL  
 GLN THR LYS  
 TRP SER PHE  
 LYS ASN VAL  
 ASP ARG ASN  
 ALA LEU LEU  
 GLN SER GLY  
 SER GLY ASN  
 SER SER

LEU SER THR  
 THR LEU THR  
 LEU SER SER  
 LYS ASP ALA  
 THR TYR TYR  
 GLY LYS HIS  
 LYS THR VAL  
 VAL TYR VAL  
 ALA TYR VAL  
 CYS CYS LEU  
 VAL VAL THR  
 THR ASN THR  
 HIS ASN PHE  
 GLN THR GLY  
 LEU SER ARG  
 SER SER PRO  
 VAL VAL LYS  
 THR THR LYS  
 TRP SER PHE  
 ASN VAL ARG  
 ASP GLY GLU  
 CYS CYS

● Molecule 5: R023 Fab heavy chain



GLU ILE SER  
 ASN E1 V2 Q3 L4  
 V5 E6 S7  
 L11 V12  
 L20 S25  
 F29 S33  
 Q39 L45  
 I51 S54 S55  
 D62 R67  
 A72 S75 K76 N77 T78 A79  
 M83 N84 S85 L86 R87  
 T91 C96  
 G99 G109  
 T112 L113 V114

T115 V116  
 F117  
 LEU ILE LYS  
 GLY PRO SER  
 VAL VAL PHE  
 THR PRO LEU  
 LEU ALA PRO  
 SER SER SER  
 SER SER LYS  
 SER THR THR  
 THR GLY GLY  
 THR THR THR  
 ALA ALA ALA  
 LEU LEU LEU  
 GLY CYS HIS  
 LEU VAL VAL  
 LYS LYS LYS  
 TRP ASN SER  
 CYS SER GLY  
 ASP LYS ALA  
 THR LEU THR  
 THR SER THR  
 VAL VAL HIS  
 THR THR PHE  
 PRO PRO ALA  
 VAL VAL LEU

GLN SER SER  
 SER GLY LEU  
 TYR TYR SER  
 LEU SER SER  
 SER VAL VAL  
 VAL THR THR  
 VAL PRO SER  
 SER SER SER  
 SER LEU LEU  
 GLY THR THR  
 THR GLN THR  
 TYR TYR ILE  
 CYS ASN VAL  
 VAL ASN ASN  
 HIS HIS LYS  
 PRO LYS SER  
 SER ASN THR  
 ASN THR LYS  
 LYS VAL ASP  
 ASP LYS LYS  
 VAL VAL VAL  
 GLU THR THR  
 LYS PRO LYS  
 SER SER CYS  
 ASP LYS LYS  
 THR THR HIS  
 THR THR

## 4 Experimental information

Property	Value	Source
EM reconstruction method	SINGLE PARTICLE	Depositor
Imposed symmetry	POINT, Not provided	
Number of particles used	90612	Depositor
Resolution determination method	FSC 0.143 CUT-OFF	Depositor
CTF correction method	PHASE FLIPPING AND AMPLITUDE CORRECTION	Depositor
Microscope	FEI TITAN KRIOS	Depositor
Voltage (kV)	300	Depositor
Electron dose ( $e^-/\text{\AA}^2$ )	57.56	Depositor
Minimum defocus (nm)	900	Depositor
Maximum defocus (nm)	2400	Depositor
Magnification	105000	Depositor
Image detector	GATAN K3 (6k x 4k)	Depositor
Maximum map value	3.262	Depositor
Minimum map value	-1.987	Depositor
Average map value	0.000	Depositor
Map value standard deviation	0.049	Depositor
Recommended contour level	0.5	Depositor
Map size (Å)	316.8, 316.8, 316.8	wwPDB
Map dimensions	384, 384, 384	wwPDB
Map angles (°)	90.0, 90.0, 90.0	wwPDB
Pixel spacing (Å)	0.825, 0.825, 0.825	Depositor

## 5 Model quality [i](#)

### 5.1 Standard geometry [i](#)

Bond lengths and bond angles in the following residue types are not validated in this section: MOV

The Z score for a bond length (or angle) is the number of standard deviations the observed value is removed from the expected value. A bond length (or angle) with  $|Z| > 5$  is considered an outlier worth inspection. RMSZ is the root-mean-square of all Z scores of the bond lengths (or angles).

Mol	Chain	Bond lengths		Bond angles	
		RMSZ	# Z  >5	RMSZ	# Z  >5
1	A	0.49	0/2296	0.63	0/3117
2	B	0.31	0/851	0.45	0/1152
3	C	0.67	0/59	1.00	0/78
4	D	0.38	0/819	0.59	0/1109
5	E	0.57	0/896	0.71	0/1216
All	All	0.47	0/4921	0.62	0/6672

There are no bond length outliers.

There are no bond angle outliers.

There are no chirality outliers.

There are no planarity outliers.

### 5.2 Too-close contacts [i](#)

In the following table, the Non-H and H(model) columns list the number of non-hydrogen atoms and hydrogen atoms in the chain respectively. The H(added) column lists the number of hydrogen atoms added and optimized by MolProbity. The Clashes column lists the number of clashes within the asymmetric unit, whereas Symm-Clashes lists symmetry-related clashes.

Mol	Chain	Non-H	H(model)	H(added)	Clashes	Symm-Clashes
1	A	2235	0	2085	51	0
2	B	828	0	791	14	0
3	C	60	0	66	6	0
4	D	803	0	797	18	0
5	E	876	0	835	22	0
6	E	41	0	0	0	0
All	All	4843	0	4574	104	0

The all-atom clashscore is defined as the number of clashes found per 1000 atoms (including



hydrogen atoms). The all-atom clashscore for this structure is 11.

The worst 5 of 104 close contacts within the same asymmetric unit are listed below, sorted by their clash magnitude.

Atom-1	Atom-2	Interatomic distance (Å)	Clash overlap (Å)
4:D:47:LEU:HA	4:D:58:VAL:HG21	1.61	0.81
5:E:6:GLU:OE1	5:E:109:GLY:HA3	1.91	0.69
5:E:86:LEU:HD23	5:E:116:VAL:HG22	1.77	0.66
4:D:5:THR:HG23	4:D:24:ARG:HD3	1.82	0.60
1:A:195:SER:HB2	1:A:198:GLU:HB2	1.84	0.59

There are no symmetry-related clashes.

## 5.3 Torsion angles [i](#)

### 5.3.1 Protein backbone [i](#)

In the following table, the Percentiles column shows the percent Ramachandran outliers of the chain as a percentile score with respect to all PDB entries followed by that with respect to all EM entries.

The Analysed column shows the number of residues for which the backbone conformation was analysed, and the total number of residues.

Mol	Chain	Analysed	Favoured	Allowed	Outliers	Percentiles	
1	A	272/274 (99%)	246 (90%)	26 (10%)	0	100	100
2	B	97/100 (97%)	97 (100%)	0	0	100	100
3	C	8/10 (80%)	7 (88%)	1 (12%)	0	100	100
4	D	104/216 (48%)	88 (85%)	16 (15%)	0	100	100
5	E	115/228 (50%)	101 (88%)	14 (12%)	0	100	100
All	All	596/828 (72%)	539 (90%)	57 (10%)	0	100	100

There are no Ramachandran outliers to report.

### 5.3.2 Protein sidechains [i](#)

In the following table, the Percentiles column shows the percent sidechain outliers of the chain as a percentile score with respect to all PDB entries followed by that with respect to all EM entries.

The Analysed column shows the number of residues for which the sidechain conformation was

analysed, and the total number of residues.

Mol	Chain	Analysed	Rotameric	Outliers	Percentiles	
1	A	231/231 (100%)	229 (99%)	2 (1%)	75	84
2	B	94/94 (100%)	94 (100%)	0	100	100
3	C	6/6 (100%)	5 (83%)	1 (17%)	2	8
4	D	91/190 (48%)	91 (100%)	0	100	100
5	E	91/189 (48%)	86 (94%)	5 (6%)	18	44
All	All	513/710 (72%)	505 (98%)	8 (2%)	58	74

5 of 8 residues with a non-rotameric sidechain are listed below:

Mol	Chain	Res	Type
5	E	87	ARG
5	E	77	ASN
5	E	12	VAL
5	E	3	GLN
5	E	25	SER

Sometimes sidechains can be flipped to improve hydrogen bonding and reduce clashes. All (1) such sidechains are listed below:

Mol	Chain	Res	Type
1	A	180	GLN

### 5.3.3 RNA [i](#)

There are no RNA molecules in this entry.

### 5.4 Non-standard residues in protein, DNA, RNA chains [i](#)

There are no non-standard protein/DNA/RNA residues in this entry.

### 5.5 Carbohydrates [i](#)

There are no oligosaccharides in this entry.

### 5.6 Ligand geometry [i](#)

1 ligand is modelled in this entry.

In the following table, the Counts columns list the number of bonds (or angles) for which Mogul statistics could be retrieved, the number of bonds (or angles) that are observed in the model and the number of bonds (or angles) that are defined in the Chemical Component Dictionary. The Link column lists molecule types, if any, to which the group is linked. The Z score for a bond length (or angle) is the number of standard deviations the observed value is removed from the expected value. A bond length (or angle) with  $|Z| > 2$  is considered an outlier worth inspection. RMSZ is the root-mean-square of all Z scores of the bond lengths (or angles).

Mol	Type	Chain	Res	Link	Bond lengths			Bond angles		
					Counts	RMSZ	$\# Z  > 2$	Counts	RMSZ	$\# Z  > 2$
6	MOV	E	301	3	43,45,45	0.63	0	53,67,67	0.93	3 (5%)

In the following table, the Chirals column lists the number of chiral outliers, the number of chiral centers analysed, the number of these observed in the model and the number defined in the Chemical Component Dictionary. Similar counts are reported in the Torsion and Rings columns. '-' means no outliers of that kind were identified.

Mol	Type	Chain	Res	Link	Chirals	Torsions	Rings
6	MOV	E	301	3	-	11/20/35/35	0/5/5/5

There are no bond length outliers.

All (3) bond angle outliers are listed below:

Mol	Chain	Res	Type	Atoms	Z	Observed( $^{\circ}$ )	Ideal( $^{\circ}$ )
6	E	301	MOV	C17-C18-N6	2.35	115.08	110.42
6	E	301	MOV	C17-N2-C7	2.04	125.55	119.40
6	E	301	MOV	C18-N6-C19	2.03	116.98	113.07

There are no chirality outliers.

5 of 11 torsion outliers are listed below:

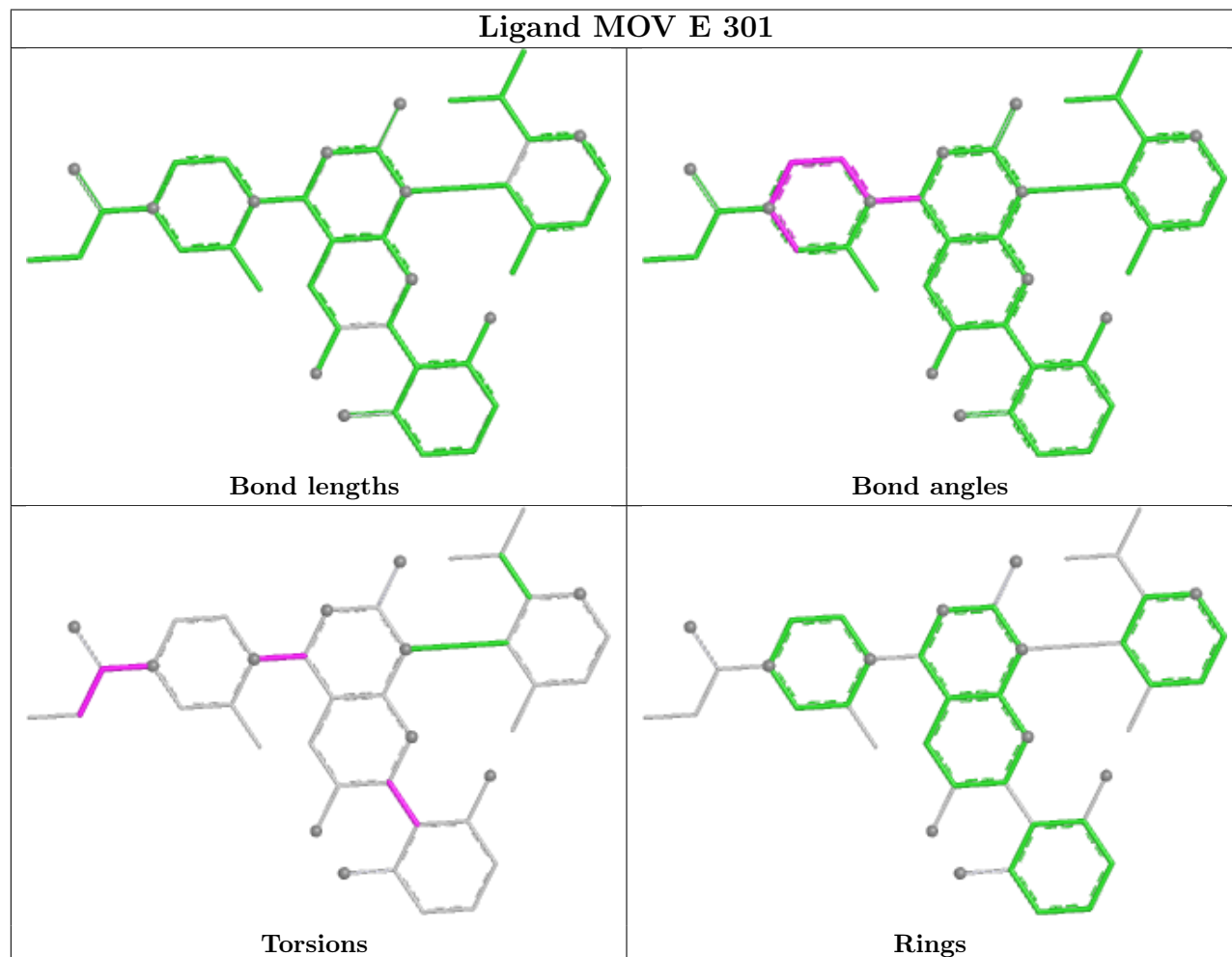
Mol	Chain	Res	Type	Atoms
6	E	301	MOV	O2-C23-N6-C19
6	E	301	MOV	C24-C23-N6-C19
6	E	301	MOV	O2-C23-N6-C18
6	E	301	MOV	C24-C23-N6-C18
6	E	301	MOV	N6-C23-C24-C25

There are no ring outliers.

No monomer is involved in short contacts.

The following is a two-dimensional graphical depiction of Mogul quality analysis of bond lengths, bond angles, torsion angles, and ring geometry for all instances of the Ligand of Interest. In

addition, ligands with molecular weight  $> 250$  and outliers as shown on the validation Tables will also be included. For torsion angles, if less than 5% of the Mogul distribution of torsion angles is within 10 degrees of the torsion angle in question, then that torsion angle is considered an outlier. Any bond that is central to one or more torsion angles identified as an outlier by Mogul will be highlighted in the graph. For rings, the root-mean-square deviation (RMSD) between the ring in question and similar rings identified by Mogul is calculated over all ring torsion angles. If the average RMSD is greater than 60 degrees and the minimal RMSD between the ring in question and any Mogul-identified rings is also greater than 60 degrees, then that ring is considered an outlier. The outliers are highlighted in purple. The color gray indicates Mogul did not find sufficient equivalents in the CSD to analyse the geometry.



## 5.7 Other polymers [\(i\)](#)

There are no such residues in this entry.

## 5.8 Polymer linkage issues [\(i\)](#)

There are no chain breaks in this entry.

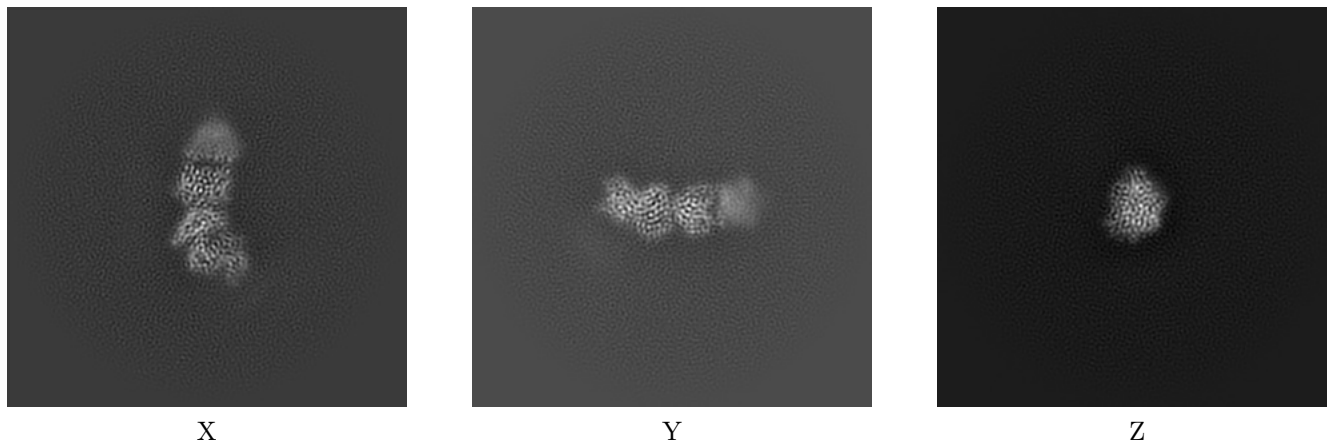
## 6 Map visualisation [i](#)

This section contains visualisations of the EMDB entry EMD-43480. These allow visual inspection of the internal detail of the map and identification of artifacts.

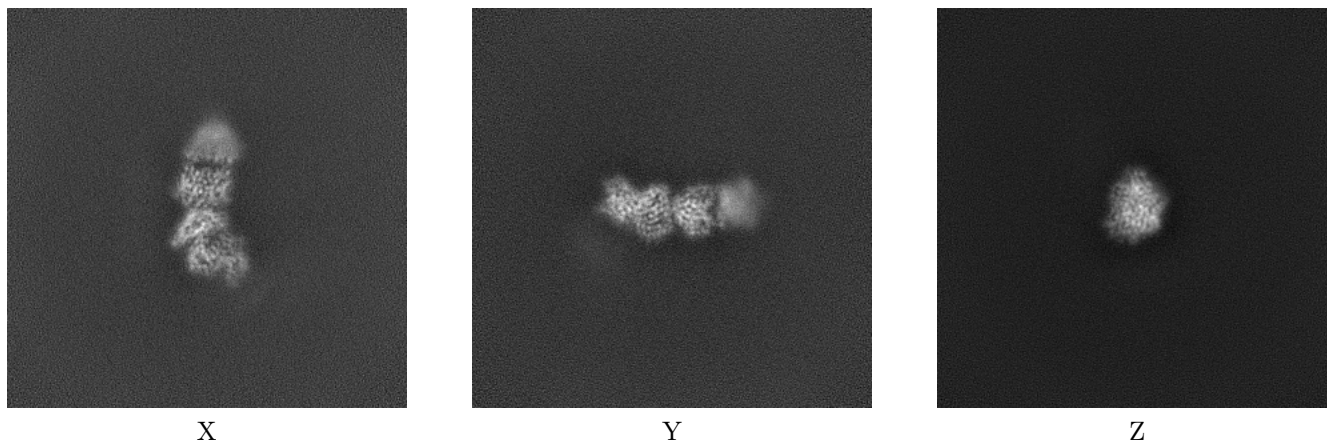
Images derived from a raw map, generated by summing the deposited half-maps, are presented below the corresponding image components of the primary map to allow further visual inspection and comparison with those of the primary map.

### 6.1 Orthogonal projections [i](#)

#### 6.1.1 Primary map



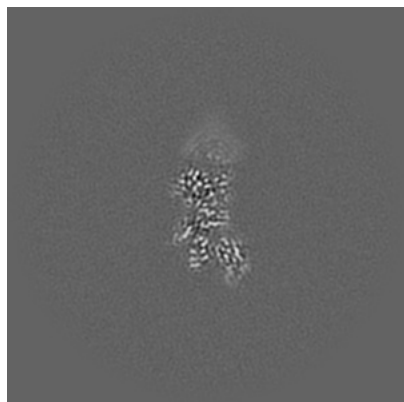
#### 6.1.2 Raw map



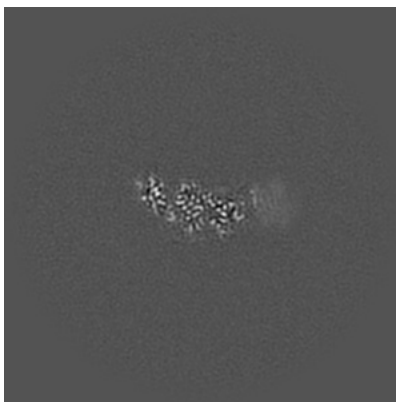
The images above show the map projected in three orthogonal directions.

## 6.2 Central slices [i](#)

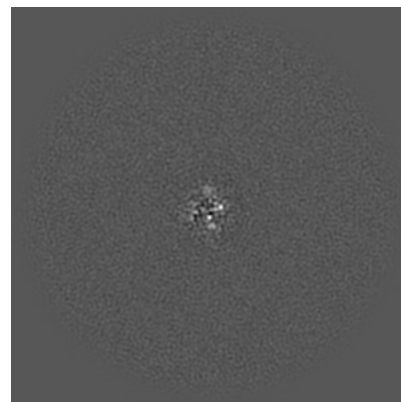
### 6.2.1 Primary map



X Index: 192

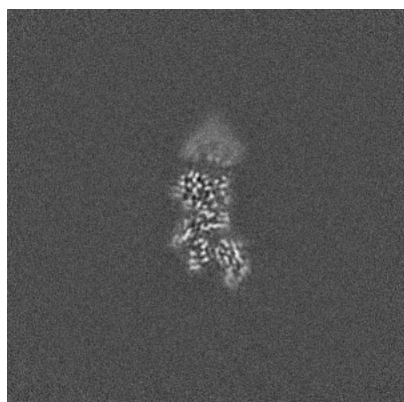


Y Index: 192

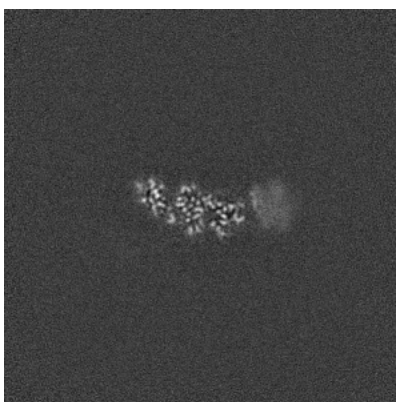


Z Index: 192

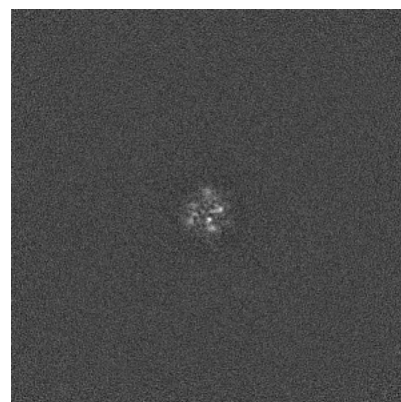
### 6.2.2 Raw map



X Index: 192



Y Index: 192



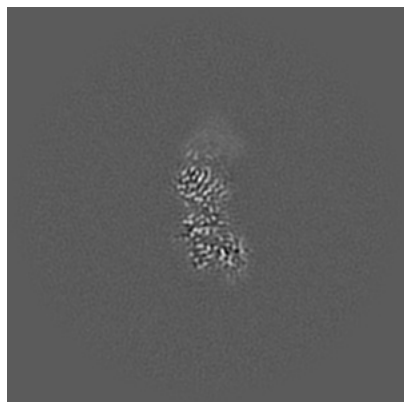
Z Index: 192

The images above show central slices of the map in three orthogonal directions.

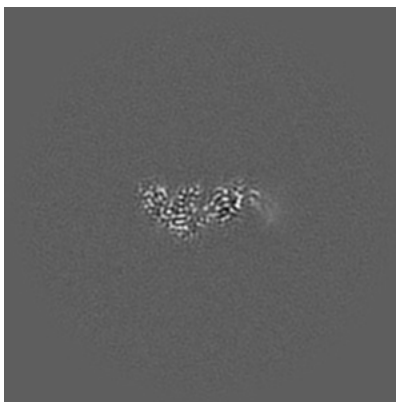


## 6.3 Largest variance slices [i](#)

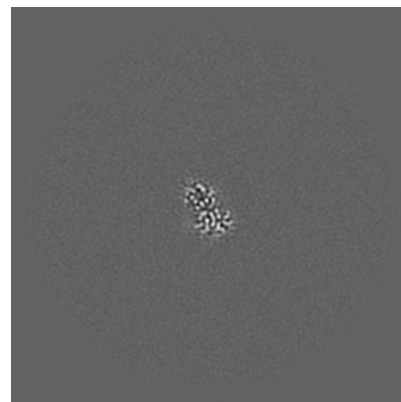
### 6.3.1 Primary map



X Index: 195

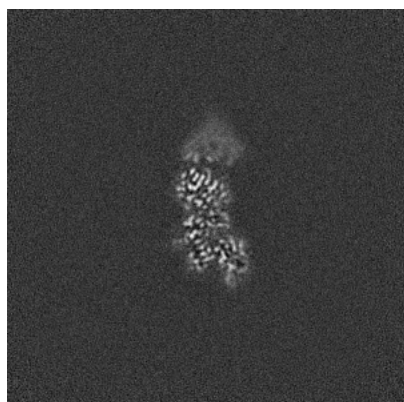


Y Index: 182

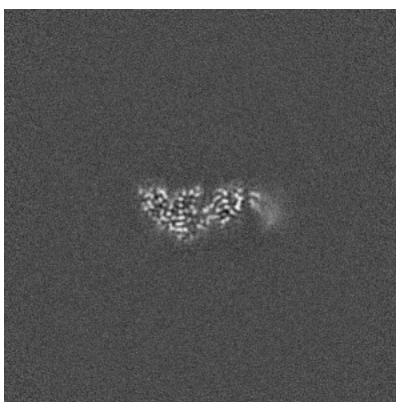


Z Index: 213

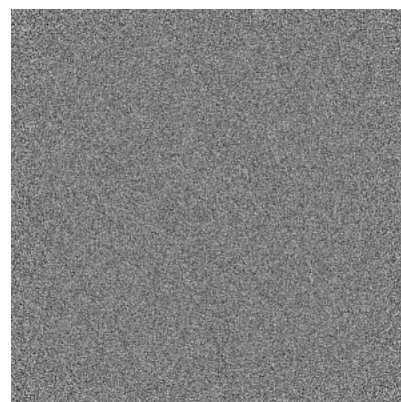
### 6.3.2 Raw map



X Index: 194



Y Index: 182

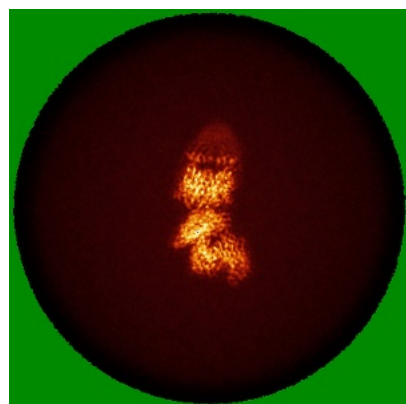


Z Index: 0

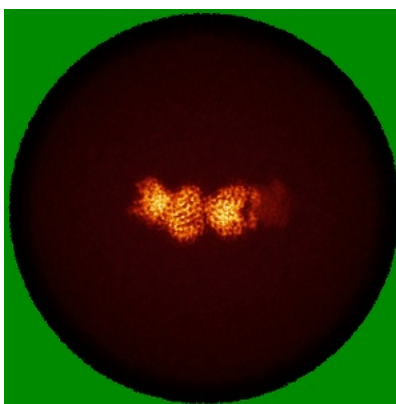
The images above show the largest variance slices of the map in three orthogonal directions.

## 6.4 Orthogonal standard-deviation projections (False-color) [i](#)

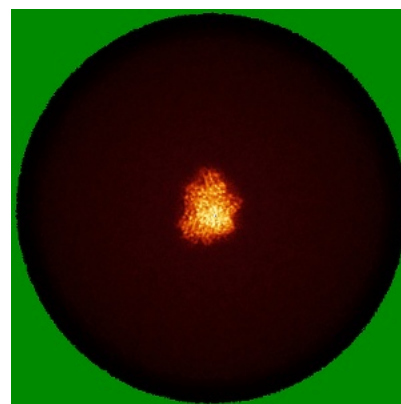
### 6.4.1 Primary map



X

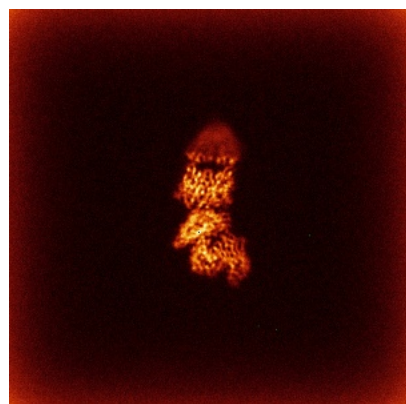


Y

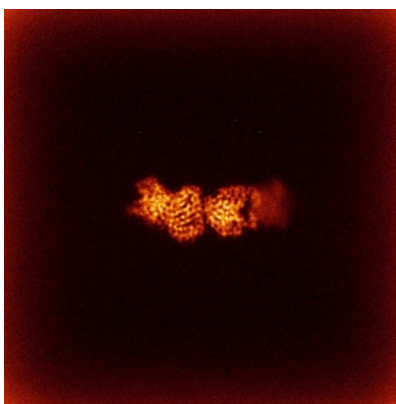


Z

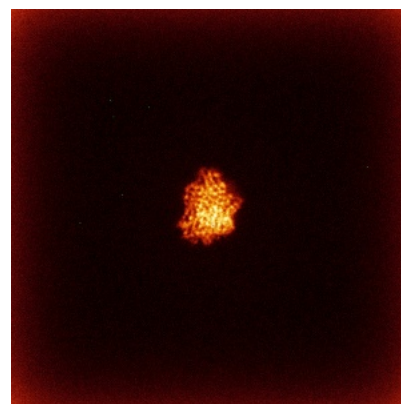
### 6.4.2 Raw map



X



Y



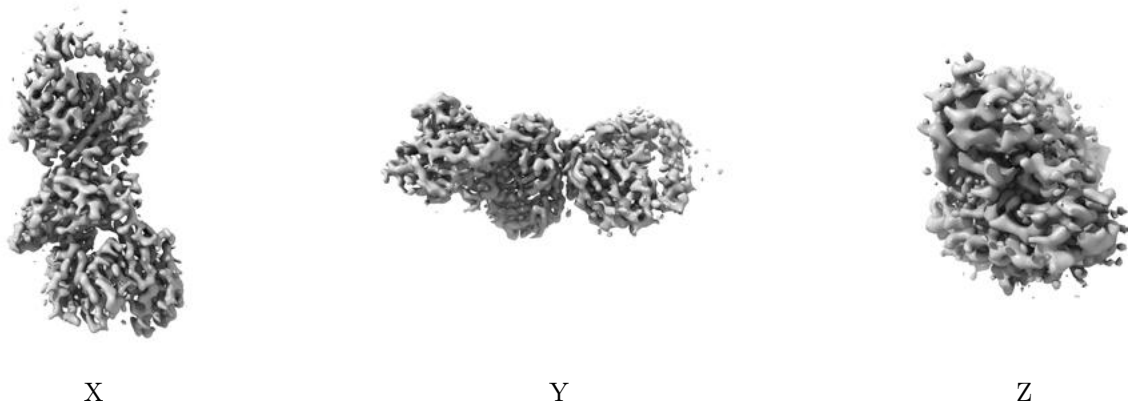
Z

The images above show the map standard deviation projections with false color in three orthogonal directions. Minimum values are shown in green, max in blue, and dark to light orange shades represent small to large values respectively.



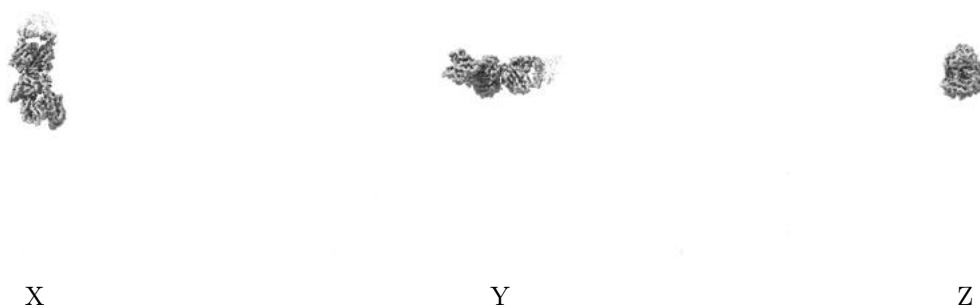
## 6.5 Orthogonal surface views [i](#)

### 6.5.1 Primary map



The images above show the 3D surface view of the map at the recommended contour level 0.5. These images, in conjunction with the slice images, may facilitate assessment of whether an appropriate contour level has been provided.

### 6.5.2 Raw map



These images show the 3D surface of the raw map. The raw map's contour level was selected so that its surface encloses the same volume as the primary map does at its recommended contour level.

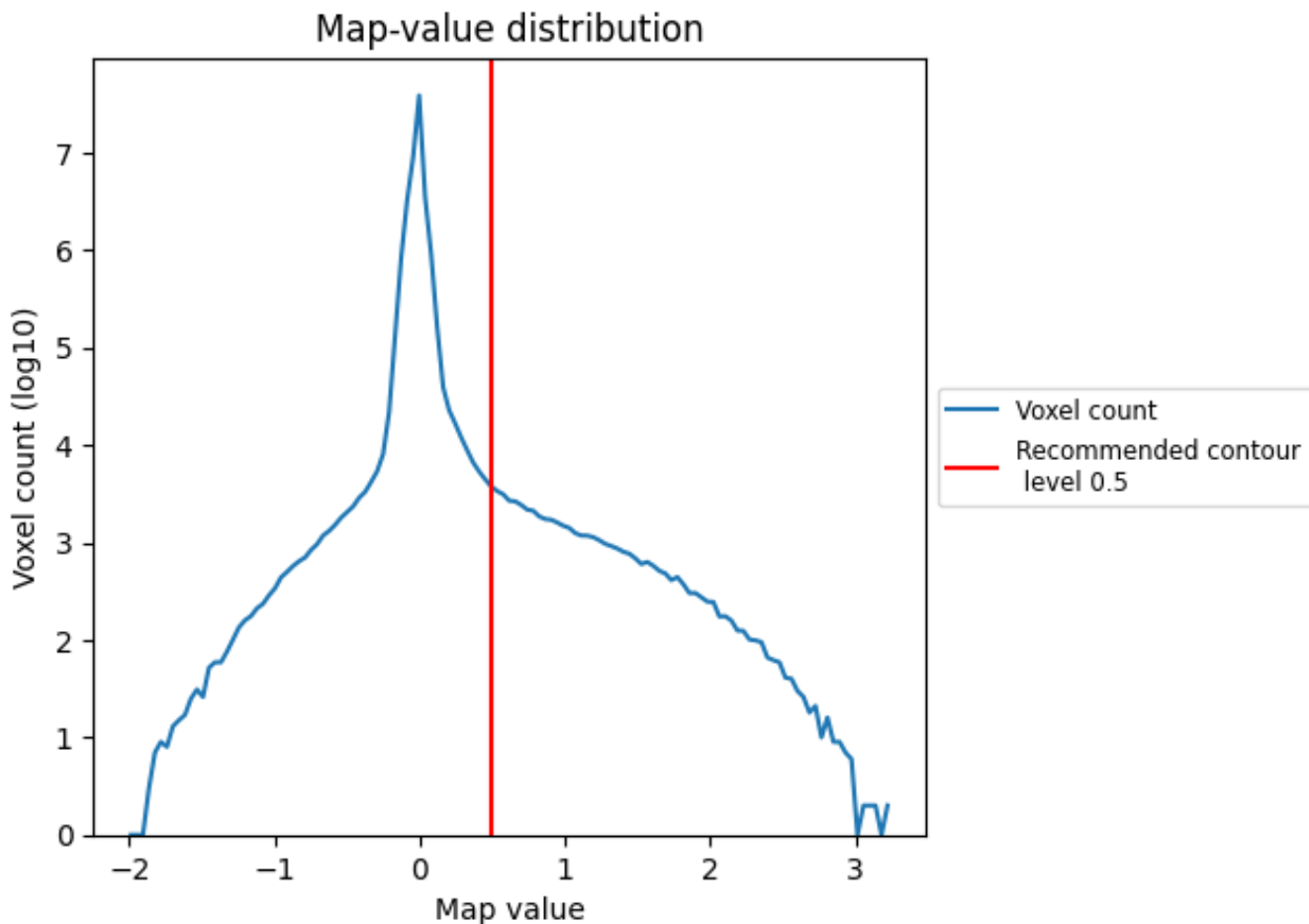
## 6.6 Mask visualisation [i](#)

This section was not generated. No masks/segmentation were deposited.

## 7 Map analysis [i](#)

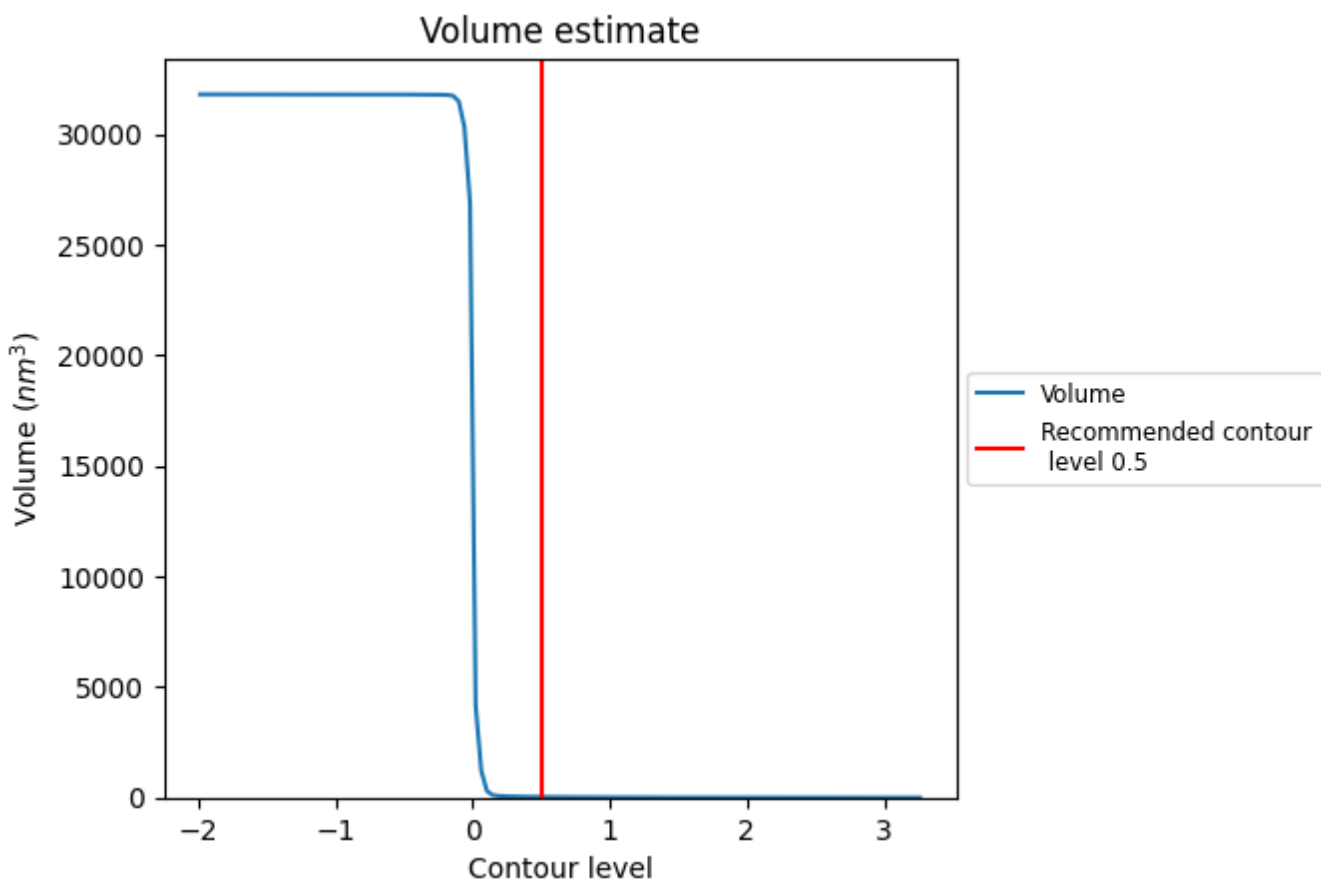
This section contains the results of statistical analysis of the map.

### 7.1 Map-value distribution [i](#)



The map-value distribution is plotted in 128 intervals along the x-axis. The y-axis is logarithmic. A spike in this graph at zero usually indicates that the volume has been masked.

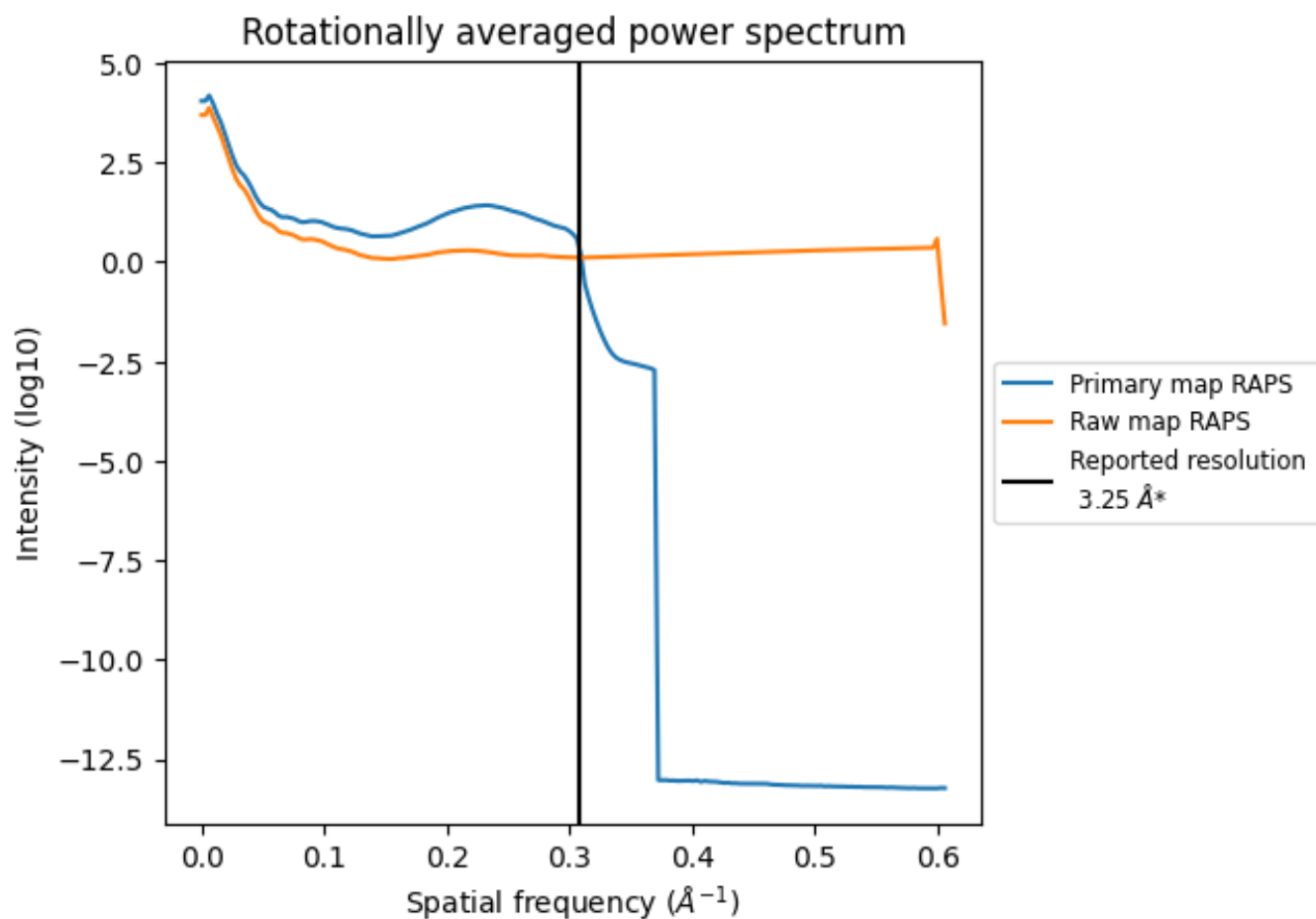
## 7.2 Volume estimate [i](#)



The volume at the recommended contour level is 28 nm<sup>3</sup>; this corresponds to an approximate mass of 25 kDa.

The volume estimate graph shows how the enclosed volume varies with the contour level. The recommended contour level is shown as a vertical line and the intersection between the line and the curve gives the volume of the enclosed surface at the given level.

### 7.3 Rotationally averaged power spectrum [i](#)

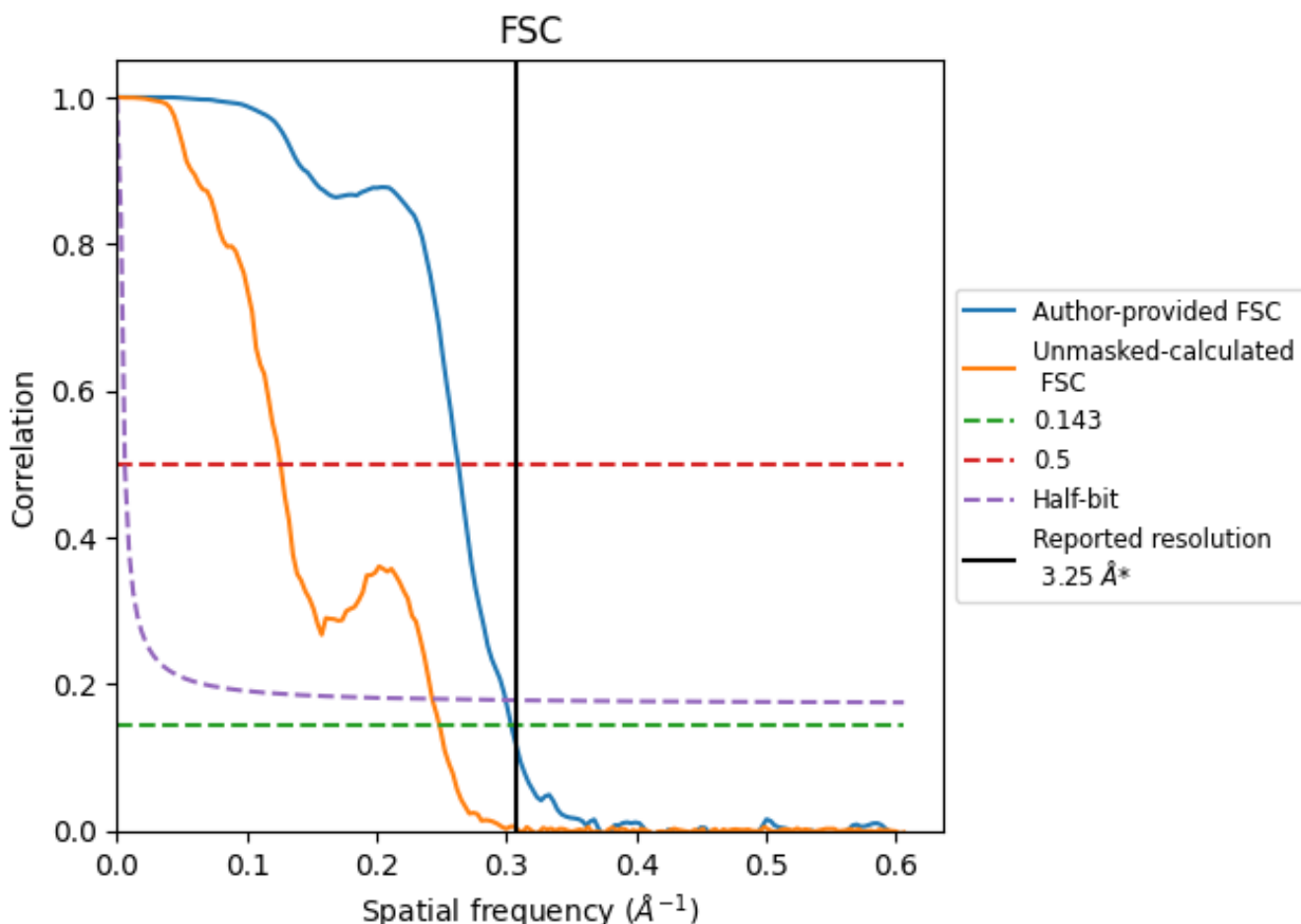


\*Reported resolution corresponds to spatial frequency of 0.308 Å<sup>-1</sup>

## 8 Fourier-Shell correlation [i](#)

Fourier-Shell Correlation (FSC) is the most commonly used method to estimate the resolution of single-particle and subtomogram-averaged maps. The shape of the curve depends on the imposed symmetry, mask and whether or not the two 3D reconstructions used were processed from a common reference. The reported resolution is shown as a black line. A curve is displayed for the half-bit criterion in addition to lines showing the 0.143 gold standard cut-off and 0.5 cut-off.

### 8.1 FSC [i](#)



\*Reported resolution corresponds to spatial frequency of 0.308  $\text{\AA}^{-1}$

## 8.2 Resolution estimates [i](#)

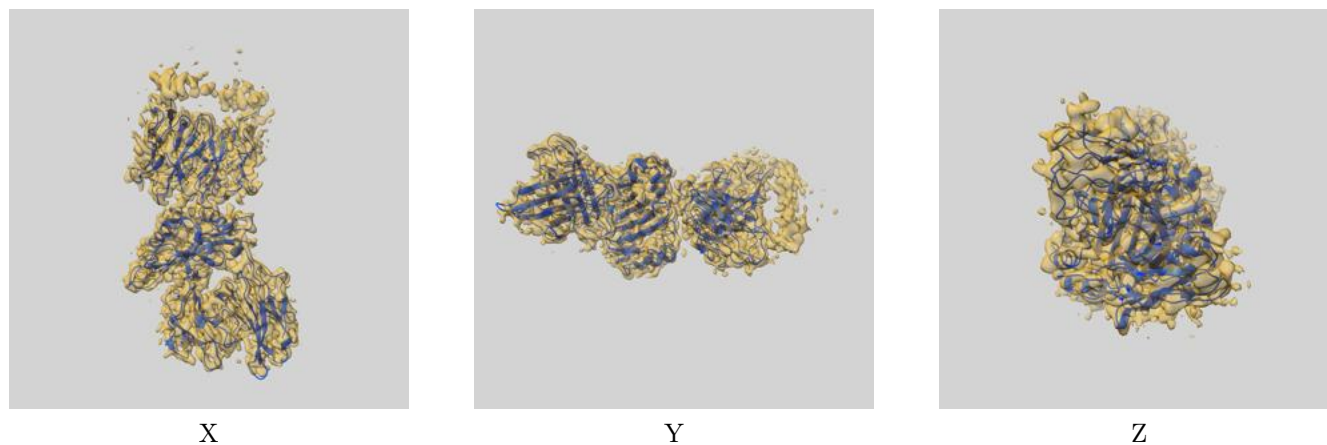
Resolution estimate (Å)	Estimation criterion (FSC cut-off)		
	0.143	0.5	Half-bit
Reported by author	3.25	-	-
Author-provided FSC curve	3.29	3.80	3.34
Unmasked-calculated*	4.02	7.93	4.12

\*Resolution estimate based on FSC curve calculated by comparison of deposited half-maps. The value from deposited half-maps intersecting FSC 0.143 CUT-OFF 4.02 differs from the reported value 3.25 by more than 10 %

## 9 Map-model fit [i](#)

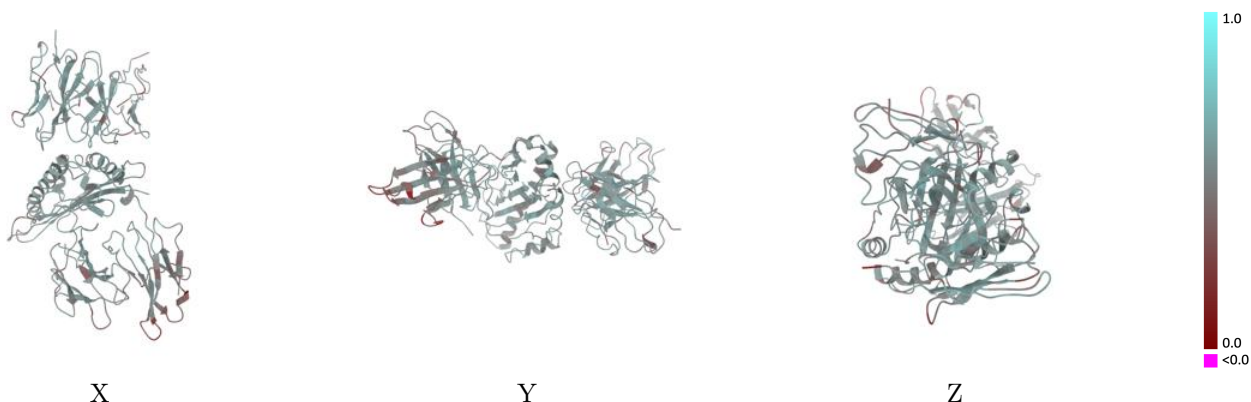
This section contains information regarding the fit between EMDB map EMD-43480 and PDB model 8VRB. Per-residue inclusion information can be found in section 3 on page 5.

### 9.1 Map-model overlay [i](#)



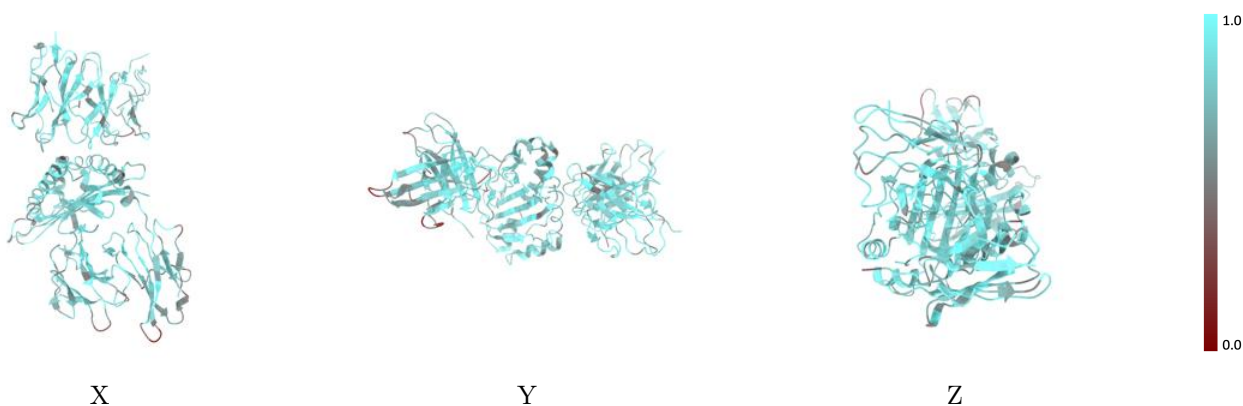
The images above show the 3D surface view of the map at the recommended contour level 0.5 at 50% transparency in yellow overlaid with a ribbon representation of the model coloured in blue. These images allow for the visual assessment of the quality of fit between the atomic model and the map.

## 9.2 Q-score mapped to coordinate model [\(i\)](#)



The images above show the model with each residue coloured according to its Q-score. This shows their resolvability in the map with higher Q-score values reflecting better resolvability. Please note: Q-score is calculating the resolvability of atoms, and thus high values are only expected at resolutions at which atoms can be resolved. Low Q-score values may therefore be expected for many entries.

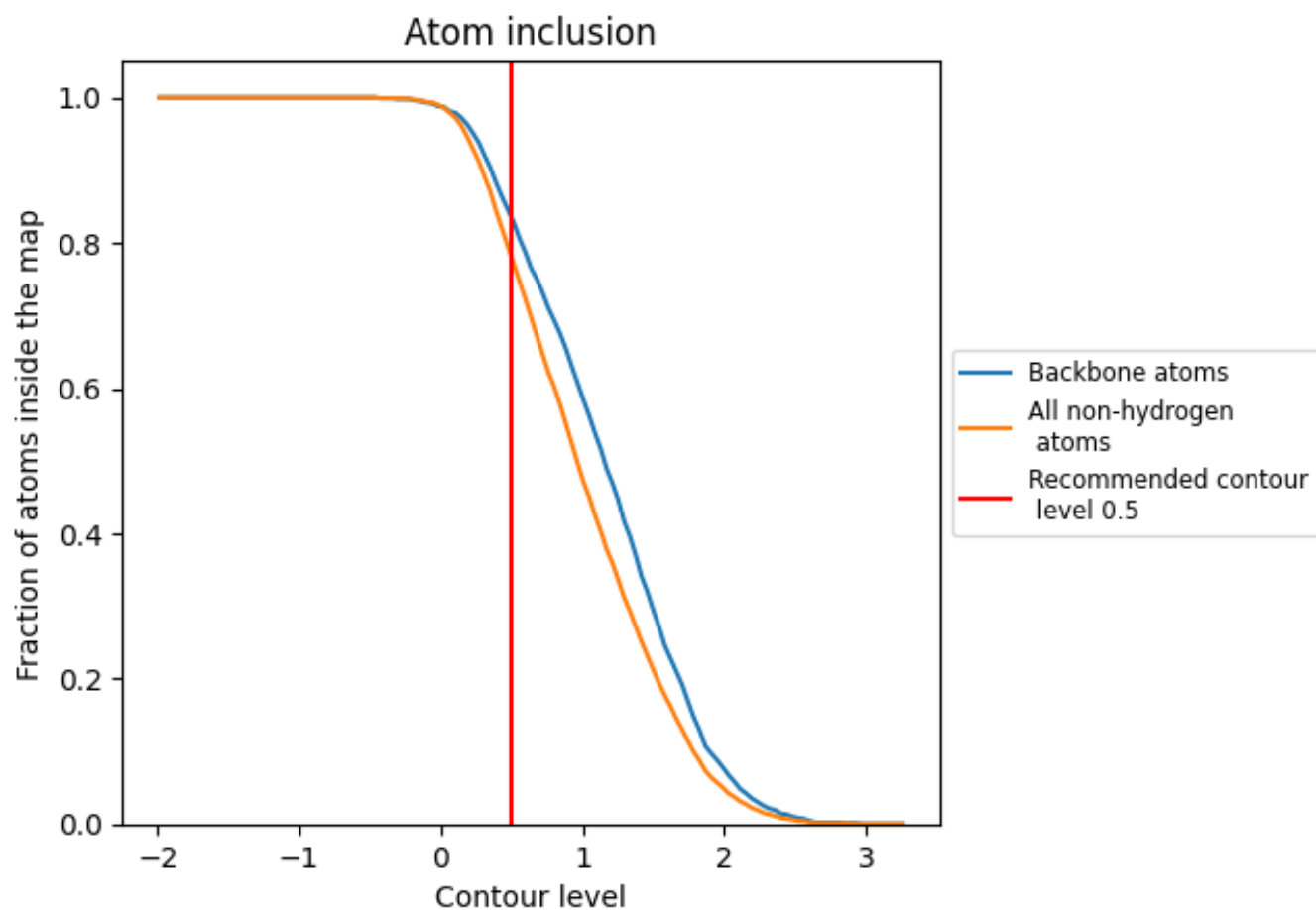
## 9.3 Atom inclusion mapped to coordinate model [\(i\)](#)



The images above show the model with each residue coloured according to its atom inclusion. This shows to what extent they are inside the map at the recommended contour level (0.5).















## 9.4 Atom inclusion [i](#)



At the recommended contour level, 83% of all backbone atoms, 78% of all non-hydrogen atoms, are inside the map.

## 9.5 Map-model fit summary

The table lists the average atom inclusion at the recommended contour level (0.5) and Q-score for the entire model and for each chain.

Chain	Atom inclusion	Q-score
All	 0.7790	 0.5160
A	 0.7660	 0.5060
B	 0.7640	 0.5200
C	 0.7330	 0.5210
D	 0.7870	 0.5240
E	 0.8190	 0.5290

