



Full wwPDB X-ray Structure Validation Report ⓘ

Jun 18, 2024 – 08:11 PM EDT

PDB ID : 3VSD
Title : Crystal Structure of the K127A Mutant of O-Phosphoserine Sulfhydrylase Complexed with External Schiff Base of Pyridoxal 5'-Phosphate with O-Acetyl-L-Serine
Authors : Nakamura, T.; Kawai, Y.; Kataoka, M.; Ishikawa, K.
Deposited on : 2012-04-24
Resolution : 2.09 Å(reported)

This is a Full wwPDB X-ray Structure Validation Report for a publicly released PDB entry.

We welcome your comments at validation@mail.wwpdb.org

A user guide is available at

<https://www.wwpdb.org/validation/2017/XrayValidationReportHelp>

with specific help available everywhere you see the ⓘ symbol.

The types of validation reports are described at

<http://www.wwpdb.org/validation/2017/FAQs#types>.

The following versions of software and data (see [references ⓘ](#)) were used in the production of this report:

MolProbity : 4.02b-467
Mogul : 2022.3.0, CSD as543be (2022)
Xtriage (Phenix) : 1.20.1
EDS : 2.37.1
Percentile statistics : 20191225.v01 (using entries in the PDB archive December 25th 2019)
Refmac : 5.8.0158
CCP4 : 7.0.044 (Gargrove)
Ideal geometry (proteins) : Engh & Huber (2001)
Ideal geometry (DNA, RNA) : Parkinson et al. (1996)
Validation Pipeline (wwPDB-VP) : 2.37.1

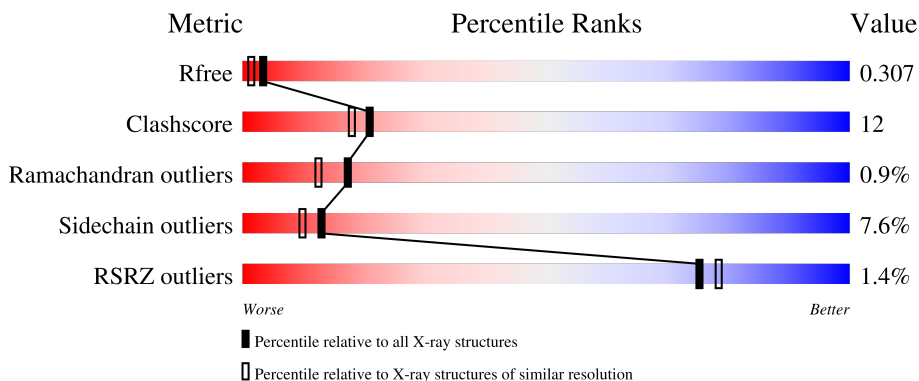
1 Overall quality at a glance

The following experimental techniques were used to determine the structure:

X-RAY DIFFRACTION

The reported resolution of this entry is 2.09 Å.

Percentile scores (ranging between 0-100) for global validation metrics of the entry are shown in the following graphic. The table shows the number of entries on which the scores are based.



Metric	Whole archive (#Entries)	Similar resolution (#Entries, resolution range(Å))
R_{free}	130704	5197 (2.10-2.10)
Clashscore	141614	5710 (2.10-2.10)
Ramachandran outliers	138981	5647 (2.10-2.10)
Sidechain outliers	138945	5648 (2.10-2.10)
RSRZ outliers	127900	5083 (2.10-2.10)

The table below summarises the geometric issues observed across the polymeric chains and their fit to the electron density. The red, orange, yellow and green segments of the lower bar indicate the fraction of residues that contain outliers for ≥ 3 , 2, 1 and 0 types of geometric quality criteria respectively. A grey segment represents the fraction of residues that are not modelled. The numeric value for each fraction is indicated below the corresponding segment, with a dot representing fractions $\leq 5\%$. The upper red bar (where present) indicates the fraction of residues that have poor fit to the electron density. The numeric value is given above the bar.

Mol	Chain	Length	Quality of chain
1	A	389	
1	B	389	

The following table lists non-polymeric compounds, carbohydrate monomers and non-standard residues in protein, DNA, RNA chains that are outliers for geometric or electron-density-fit criteria:

Mol	Type	Chain	Res	Chirality	Geometry	Clashes	Electron density
3	OAS	A	402	-	-	X	-
3	OAS	B	402	-	-	X	-

2 Entry composition i

There are 5 unique types of molecules in this entry. The entry contains 6029 atoms, of which 0 are hydrogens and 0 are deuteriums.

In the tables below, the ZeroOcc column contains the number of atoms modelled with zero occupancy, the AltConf column contains the number of residues with at least one atom in alternate conformation and the Trace column contains the number of residues modelled with at most 2 atoms.

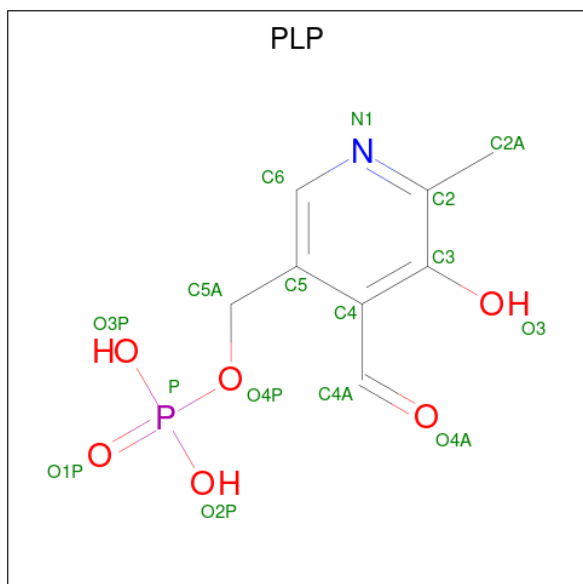
- Molecule 1 is a protein called Protein CysO.

Mol	Chain	Residues	Atoms					ZeroOcc	AltConf	Trace
			Total	C	N	O	S			
1	A	382	Total 2948	C 1868	N 519	O 552	S 9	0	4	0
1	B	383	Total 2924	C 1855	N 511	O 549	S 9	0	1	0

There are 2 discrepancies between the modelled and reference sequences:

Chain	Residue	Modelled	Actual	Comment	Reference
A	127	ALA	LYS	ENGINEERED MUTATION	UNP Q9YBL2
B	127	ALA	LYS	ENGINEERED MUTATION	UNP Q9YBL2

- Molecule 2 is PYRIDOXAL-5'-PHOSPHATE (three-letter code: PLP) (formula: C₈H₁₀NO₆P).



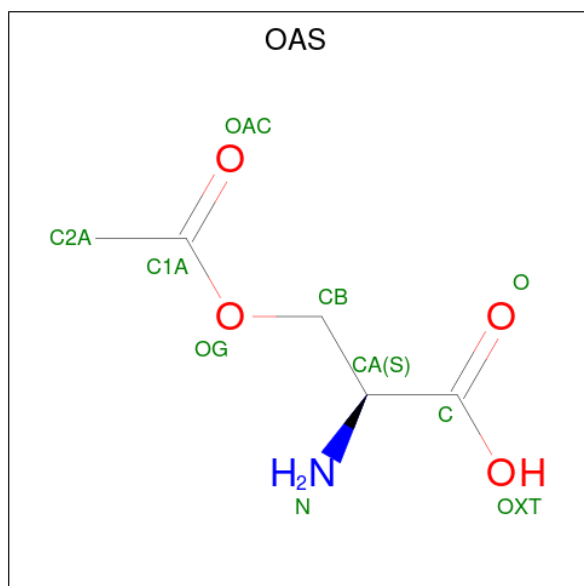
Mol	Chain	Residues	Atoms					ZeroOcc	AltConf
			Total	C	N	O	P		
2	A	1	Total 15	C 8	N 1	O 5	P 1	0	0

Continued on next page...

Continued from previous page...

Mol	Chain	Residues	Atoms					ZeroOcc	AltConf
			Total	C	N	O	P		
2	B	1	15	8	1	5	1	0	0

- Molecule 3 is O-ACETYL-SERINE (three-letter code: OAS) (formula: C₅H₉NO₄).



Mol	Chain	Residues	Atoms				ZeroOcc	AltConf
			Total	C	N	O		
3	A	1	10	5	1	4	0	0
3	B	1	10	5	1	4	0	0

- Molecule 4 is (4S)-2-METHYL-2,4-PENTANEDIOL (three-letter code: MPD) (formula: C₆H₁₄O₂).



Mol	Chain	Residues	Atoms	ZeroOcc	AltConf
4	A	1	Total C O 8 6 2	0	0

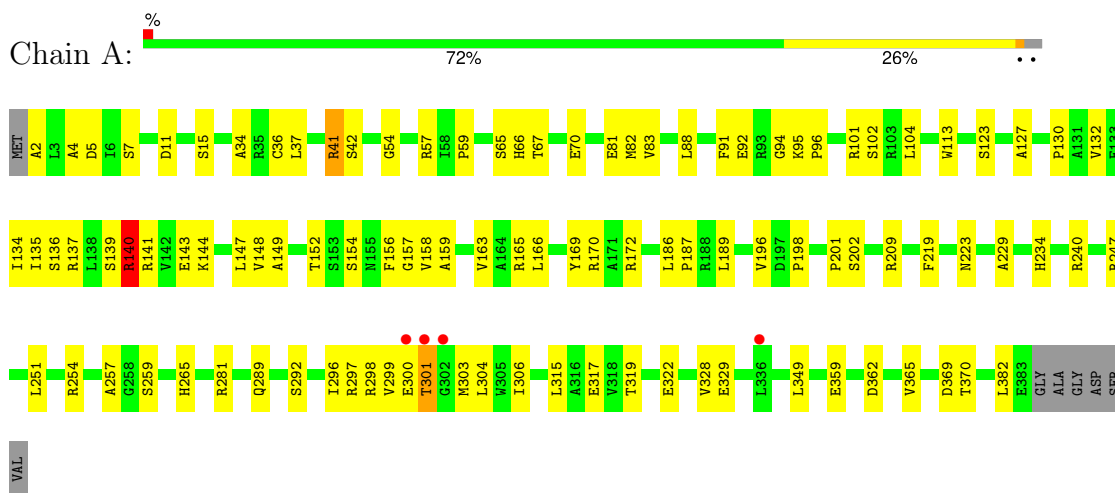
- Molecule 5 is water.

Mol	Chain	Residues	Atoms	ZeroOcc	AltConf
5	A	49	Total O 49 49	0	0
5	B	50	Total O 50 50	0	0

3 Residue-property plots

These plots are drawn for all protein, RNA, DNA and oligosaccharide chains in the entry. The first graphic for a chain summarises the proportions of the various outlier classes displayed in the second graphic. The second graphic shows the sequence view annotated by issues in geometry and electron density. Residues are color-coded according to the number of geometric quality criteria for which they contain at least one outlier: green = 0, yellow = 1, orange = 2 and red = 3 or more. A red dot above a residue indicates a poor fit to the electron density ($RSRZ > 2$). Stretches of 2 or more consecutive residues without any outlier are shown as a green connector. Residues present in the sample, but not in the model, are shown in grey.

• Molecule 1: Protein CysO



• Molecule 1: Protein CysO



4 Data and refinement statistics

Property	Value	Source
Space group	P 43 21 2	Depositor
Cell constants a, b, c, α , β , γ	75.65Å 75.65Å 275.78Å 90.00° 90.00° 90.00°	Depositor
Resolution (Å)	50.00 – 2.09 46.23 – 2.09	Depositor EDS
% Data completeness (in resolution range)	97.7 (50.00-2.09) 97.7 (46.23-2.09)	Depositor EDS
R_{merge}	0.08	Depositor
R_{sym}	(Not available)	Depositor
$\langle I/\sigma(I) \rangle$ ¹	2.07 (at 2.10Å)	Xtrriage
Refinement program	REFMAC	Depositor
R, R_{free}	0.233 , 0.305 0.234 , 0.307	Depositor DCC
R_{free} test set	2386 reflections (5.05%)	wwPDB-VP
Wilson B-factor (Å ²)	32.6	Xtrriage
Anisotropy	0.202	Xtrriage
Bulk solvent k_{sol} (e/Å ³), B_{sol} (Å ²)	0.30 , 44.5	EDS
L-test for twinning ²	$\langle L \rangle = 0.49$, $\langle L^2 \rangle = 0.32$	Xtrriage
Estimated twinning fraction	No twinning to report.	Xtrriage
F_o, F_c correlation	0.94	EDS
Total number of atoms	6029	wwPDB-VP
Average B, all atoms (Å ²)	44.0	wwPDB-VP

Xtrriage's analysis on translational NCS is as follows: *The largest off-origin peak in the Patterson function is 5.64% of the height of the origin peak. No significant pseudotranslation is detected.*

¹Intensities estimated from amplitudes.

²Theoretical values of $\langle |L| \rangle$, $\langle L^2 \rangle$ for acentric reflections are 0.5, 0.333 respectively for untwinned datasets, and 0.375, 0.2 for perfectly twinned datasets.

5 Model quality [i](#)

5.1 Standard geometry [i](#)

Bond lengths and bond angles in the following residue types are not validated in this section: PLP, MPD, OAS

The Z score for a bond length (or angle) is the number of standard deviations the observed value is removed from the expected value. A bond length (or angle) with $|Z| > 5$ is considered an outlier worth inspection. RMSZ is the root-mean-square of all Z scores of the bond lengths (or angles).

Mol	Chain	Bond lengths		Bond angles	
		RMSZ	# $ Z > 5$	RMSZ	# $ Z > 5$
1	A	0.89	1/3007 (0.0%)	0.89	2/4082 (0.0%)
1	B	0.95	0/2983	0.91	2/4050 (0.0%)
All	All	0.92	1/5990 (0.0%)	0.90	4/8132 (0.0%)

Chiral center outliers are detected by calculating the chiral volume of a chiral center and verifying if the center is modelled as a planar moiety or with the opposite hand. A planarity outlier is detected by checking planarity of atoms in a peptide group, atoms in a mainchain group or atoms of a sidechain that are expected to be planar.

Mol	Chain	#Chirality outliers	#Planarity outliers
1	B	0	1

All (1) bond length outliers are listed below:

Mol	Chain	Res	Type	Atoms	Z	Observed(Å)	Ideal(Å)
1	A	92	GLU	CG-CD	5.89	1.60	1.51

All (4) bond angle outliers are listed below:

Mol	Chain	Res	Type	Atoms	Z	Observed(°)	Ideal(°)
1	B	138	LEU	CA-CB-CG	7.22	131.90	115.30
1	B	26	ARG	NE-CZ-NH1	6.16	123.38	120.30
1	A	369	ASP	CB-CG-OD1	5.23	123.01	118.30
1	A	140	ARG	NE-CZ-NH1	5.11	122.85	120.30

There are no chirality outliers.

All (1) planarity outliers are listed below:

Mol	Chain	Res	Type	Group
1	B	300	GLU	Peptide

5.2 Too-close contacts [i](#)

In the following table, the Non-H and H(model) columns list the number of non-hydrogen atoms and hydrogen atoms in the chain respectively. The H(added) column lists the number of hydrogen atoms added and optimized by MolProbity. The Clashes column lists the number of clashes within the asymmetric unit, whereas Symm-Clashes lists symmetry-related clashes.

Mol	Chain	Non-H	H(model)	H(added)	Clashes	Symm-Clashes
1	A	2948	0	2956	70	0
1	B	2924	0	2930	70	0
2	A	15	0	7	5	0
2	B	15	0	6	5	0
3	A	10	0	8	5	0
3	B	10	0	8	10	0
4	A	8	0	14	1	0
5	A	49	0	0	2	0
5	B	50	0	0	7	0
All	All	6029	0	5929	143	0

The all-atom clashscore is defined as the number of clashes found per 1000 atoms (including hydrogen atoms). The all-atom clashscore for this structure is 12.

All (143) close contacts within the same asymmetric unit are listed below, sorted by their clash magnitude.

Atom-1	Atom-2	Interatomic distance (Å)	Clash overlap (Å)
1:A:67:THR:CG2	1:A:70:GLU:HG3	1.78	1.13
1:B:236:ARG:HD3	5:B:529:HOH:O	1.55	1.07
1:A:67:THR:HG22	1:A:70:GLU:CG	1.86	1.05
1:B:259:SER:HB2	1:B:296:ILE:HG21	1.46	0.97
1:A:67:THR:HG22	1:A:70:GLU:HG3	0.95	0.95
2:B:401:PLP:C4A	3:B:402:OAS:H	1.81	0.94
1:B:199:GLU:HB2	5:B:548:HOH:O	1.65	0.94
2:A:401:PLP:C4A	3:A:402:OAS:H2	1.74	0.90
2:A:401:PLP:C4A	3:A:402:OAS:H	1.86	0.88
2:B:401:PLP:C4A	3:B:402:OAS:H2	1.83	0.87
1:B:223:ASN:HD21	1:B:226:TYR:HD1	1.25	0.84
1:B:23:GLU:HG3	5:B:537:HOH:O	1.77	0.84
1:B:261:GLY:CA	3:B:402:OAS:HC22	2.07	0.84
1:A:259:SER:HB2	1:A:296:ILE:HG21	1.66	0.78

Continued on next page...

Continued from previous page...

Atom-1	Atom-2	Interatomic distance (Å)	Clash overlap (Å)
2:A:401:PLP:C4A	3:A:402:OAS:CA	2.62	0.78
1:B:319:THR:OG1	1:B:322:GLU:HG2	1.90	0.72
1:B:236:ARG:O	1:B:240:ARG:HG2	1.90	0.71
1:A:140:ARG:HG3	1:A:140:ARG:HH11	1.54	0.71
1:B:286:GLN:HG2	1:B:315:LEU:HD13	1.73	0.70
1:B:197:ASP:OD2	1:B:200:ALA:HB2	1.90	0.70
2:A:401:PLP:C4	3:A:402:OAS:N	2.55	0.70
1:A:2:ALA:N	1:A:66:HIS:HE2	1.90	0.70
1:A:88:LEU:CD2	1:A:166:LEU:HD13	2.23	0.68
1:A:67:THR:CG2	1:A:70:GLU:H	2.08	0.67
1:A:5:ASP:OD1	1:A:7:SER:OG	2.12	0.67
1:A:67:THR:HG23	1:A:70:GLU:H	1.60	0.67
1:A:254:ARG:HD3	1:A:359[A]:GLU:HG3	1.79	0.65
1:B:78:VAL:HB	1:B:82:MET:HE1	1.79	0.64
2:B:401:PLP:C4A	3:B:402:OAS:CA	2.74	0.64
1:A:254:ARG:HH11	1:A:359[A]:GLU:HG3	1.63	0.63
1:B:289:GLN:HA	1:B:289:GLN:OE1	1.97	0.63
1:B:261:GLY:HA3	3:B:402:OAS:HC22	1.82	0.61
1:A:139:SER:HA	1:A:169:TYR:OH	2.00	0.61
1:B:159:ALA:O	1:B:163:VAL:HG23	2.01	0.61
1:A:359[A]:GLU:O	1:A:359[A]:GLU:HG2	2.01	0.60
2:B:401:PLP:C4	3:B:402:OAS:N	2.62	0.60
1:B:59:PRO:HB3	1:B:66:HIS:HD2	1.65	0.60
1:B:106:LEU:HD22	1:B:112:VAL:CG2	2.31	0.60
1:A:88:LEU:HD22	1:A:166:LEU:HD13	1.85	0.59
1:A:201:PRO:O	1:A:202:SER:HB3	2.03	0.59
1:B:97:THR:HA	5:B:505:HOH:O	2.02	0.59
1:A:140:ARG:HH11	1:A:140:ARG:CG	2.15	0.58
1:A:54:GLY:HA3	1:A:240:ARG:HD3	1.86	0.58
1:A:303:MET:HB2	1:A:306:ILE:HG22	1.85	0.58
1:A:41:ARG:HG3	5:A:507:HOH:O	2.03	0.57
1:A:166:LEU:HD23	1:B:103:ARG:HH11	1.69	0.57
1:B:36:CYS:HA	1:B:59:PRO:HB2	1.88	0.56
1:A:299:VAL:HG21	1:A:315:LEU:HD21	1.87	0.56
1:A:166:LEU:HD23	1:B:103:ARG:NH1	2.21	0.56
1:A:81:GLU:H	1:A:81:GLU:CD	2.09	0.56
1:A:82:MET:HE1	4:A:403:MPD:H4	1.88	0.56
1:B:103:ARG:O	1:B:105:GLN:NE2	2.39	0.55
1:A:186:LEU:HD22	1:A:189:LEU:HD23	1.89	0.55
1:B:286:GLN:CG	1:B:315:LEU:HD13	2.36	0.54
1:B:319:THR:OG1	1:B:322:GLU:CG	2.57	0.53

Continued on next page...

Continued from previous page...

Atom-1	Atom-2	Interatomic distance (Å)	Clash overlap (Å)
1:A:113:TRP:N	1:A:113:TRP:CD1	2.76	0.52
1:A:134:ILE:HG13	1:A:229:ALA:HB3	1.90	0.52
1:A:158:VAL:HG22	1:A:187:PRO:HD3	1.91	0.52
1:A:4:ALA:O	1:A:57:ARG:HA	2.10	0.52
1:B:78:VAL:HB	1:B:82:MET:CE	2.39	0.52
1:B:355:GLU:OE2	1:B:357:ASP:HB2	2.09	0.52
1:B:106:LEU:HD22	1:B:112:VAL:HG23	1.91	0.51
1:A:36:CYS:HA	1:A:59:PRO:HB2	1.93	0.51
1:A:102:SER:OG	1:A:104:LEU:HB2	2.11	0.50
1:B:257:ALA:HA	1:B:283:VAL:O	2.12	0.50
1:B:69[A]:GLU:H	1:B:69[A]:GLU:CD	2.13	0.50
1:B:150:ASP:OD1	1:B:151:ALA:N	2.45	0.50
1:B:221:HIS:NE2	1:B:223:ASN:HB2	2.26	0.49
1:A:94:GLY:O	1:A:95:LYS:HD3	2.11	0.49
1:A:319:THR:HG23	1:A:322:GLU:OE1	2.12	0.49
1:A:303:MET:HB2	1:A:306:ILE:CG2	2.42	0.49
2:A:401:PLP:C4	3:A:402:OAS:H2	2.21	0.49
1:B:352:LYS:HB3	1:B:358:LEU:HD11	1.95	0.49
1:B:261:GLY:HA2	3:B:402:OAS:HC22	1.92	0.49
1:A:166:LEU:CD2	1:B:103:ARG:HH11	2.26	0.48
1:B:90:PHE:CE2	1:B:121:PRO:HB3	2.48	0.48
1:A:257:ALA:HB3	1:A:365:VAL:HG22	1.96	0.48
1:A:147:LEU:HB2	1:A:170[A]:ARG:CZ	2.44	0.47
1:B:150:ASP:OD2	1:B:224:GLN:HG2	2.15	0.47
1:A:289:GLN:HG2	1:A:298:ARG:NH1	2.30	0.47
1:A:328:VAL:HG22	1:B:189:LEU:HD12	1.96	0.47
1:B:326:ALA:O	1:B:330:VAL:HG23	2.15	0.47
1:A:152:THR:HG21	1:A:157:GLY:HA3	1.97	0.47
1:B:261:GLY:CA	3:B:402:OAS:C2A	2.86	0.47
1:A:140:ARG:HG3	1:A:140:ARG:NH1	2.27	0.47
1:B:319:THR:H	1:B:322:GLU:HG3	1.80	0.47
1:B:284:LEU:HD22	1:B:313:TYR:HB2	1.97	0.47
1:B:261:GLY:C	3:B:402:OAS:C2A	2.84	0.46
1:B:305:TRP:O	1:B:309:LEU:HB2	2.15	0.46
1:B:67:THR:OG1	1:B:69[A]:GLU:HG2	2.15	0.46
1:A:96:PRO:O	1:B:82:MET:HG3	2.16	0.46
1:B:136:SER:O	1:B:137:ARG:C	2.53	0.46
1:B:148:VAL:HG22	1:B:170:ARG:O	2.15	0.46
1:B:259:SER:OG	2:B:401:PLP:H6	2.14	0.46
1:A:130:PRO:O	1:A:134:ILE:HD12	2.16	0.46
1:A:349:LEU:HD22	1:A:365:VAL:CG2	2.46	0.46

Continued on next page...

Continued from previous page...

Atom-1	Atom-2	Interatomic distance (Å)	Clash overlap (Å)
1:A:137:ARG:HG3	5:A:526:HOH:O	2.16	0.46
1:A:281:ARG:HB3	1:A:281:ARG:NH1	2.31	0.46
1:B:199:GLU:CB	5:B:548:HOH:O	2.40	0.45
1:A:41:ARG:HD2	1:A:41:ARG:HA	1.69	0.45
1:A:251:LEU:HD23	1:A:362:ASP:HB3	1.99	0.45
1:A:88:LEU:HD13	1:A:88:LEU:HA	1.85	0.45
1:B:286:GLN:NE2	1:B:298:ARG:CZ	2.80	0.45
1:B:261:GLY:C	3:B:402:OAS:HC22	2.37	0.45
1:A:91:PHE:O	1:A:95:LYS:NZ	2.49	0.44
1:A:34:ALA:O	1:A:65:SER:HB2	2.17	0.44
1:B:258:GLY:HA3	1:B:266:MET:SD	2.57	0.44
1:B:157:GLY:HA3	5:B:506:HOH:O	2.18	0.44
1:A:147:LEU:HG	1:A:219:PHE:HB2	2.00	0.44
1:A:147:LEU:HB2	1:A:170[A]:ARG:NH1	2.33	0.44
1:A:196:VAL:O	1:A:198:PRO:HD3	2.18	0.44
1:A:127:ALA:HB1	1:A:156:PHE:HA	2.00	0.44
1:B:35:ARG:CG	1:B:35:ARG:HH11	2.31	0.44
1:B:74:PHE:HB2	5:B:509:HOH:O	2.16	0.44
1:A:189:LEU:HA	1:B:382:LEU:HD21	2.00	0.44
1:A:134:ILE:HG22	1:A:135:ILE:N	2.33	0.43
1:B:69[A]:GLU:OE2	1:B:74:PHE:CE1	2.72	0.43
1:A:297:ARG:NH2	1:A:301:THR:HB	2.34	0.43
1:B:248:ARG:HD2	1:B:248:ARG:N	2.34	0.43
1:A:152:THR:OG1	1:A:156:PHE:HB3	2.20	0.42
1:A:123:SER:HB3	1:A:159:ALA:HB2	2.00	0.42
1:A:254:ARG:NH1	1:A:359[A]:GLU:OE1	2.53	0.42
1:B:93:ARG:O	1:B:95:LYS:N	2.45	0.42
1:B:138:LEU:C	1:B:138:LEU:HD23	2.40	0.42
1:B:59:PRO:HG3	1:B:71:LEU:HD21	2.01	0.42
1:B:287:PRO:HG3	1:B:296:ILE:HD12	2.01	0.42
1:B:347:LYS:HE3	1:B:351:LYS:HG3	2.02	0.42
1:A:104:LEU:HA	1:A:104:LEU:HD23	1.68	0.41
1:A:234:HIS:CE1	1:A:265:HIS:HB3	2.55	0.41
1:B:262:THR:O	1:B:263:SER:OG	2.29	0.41
1:A:132:VAL:HA	1:A:163:VAL:HG11	2.02	0.41
1:B:11:ASP:O	1:B:12:VAL:C	2.59	0.41
1:B:12:VAL:HG21	1:B:47:VAL:HG12	2.02	0.41
1:B:149:ALA:HA	1:B:172:ARG:O	2.21	0.41
1:A:81:GLU:HG2	1:A:83:VAL:HG23	2.01	0.41
1:A:134:ILE:O	1:A:135:ILE:C	2.58	0.41
1:A:135:ILE:HD13	1:A:135:ILE:HA	1.96	0.40

Continued on next page...

Continued from previous page...

Atom-1	Atom-2	Interatomic distance (Å)	Clash overlap (Å)
1:A:149:ALA:HA	1:A:172:ARG:O	2.21	0.40
1:A:101[B]:ARG:HG2	1:A:113:TRP:CE2	2.56	0.40
1:B:75:ASP:N	1:B:75:ASP:OD1	2.54	0.40
1:B:175:LEU:HA	1:B:176:PRO:HD3	1.91	0.40
1:B:201:PRO:O	1:B:202:SER:HB3	2.21	0.40
1:B:118:TRP:NE1	1:B:119:TYR:CE1	2.89	0.40

There are no symmetry-related clashes.

5.3 Torsion angles [i](#)

5.3.1 Protein backbone [i](#)

In the following table, the Percentiles column shows the percent Ramachandran outliers of the chain as a percentile score with respect to all X-ray entries followed by that with respect to entries of similar resolution.

The Analysed column shows the number of residues for which the backbone conformation was analysed, and the total number of residues.

Mol	Chain	Analysed	Favoured	Allowed	Outliers	Percentiles	
1	A	384/389 (99%)	361 (94%)	19 (5%)	4 (1%)	15	11
1	B	382/389 (98%)	352 (92%)	27 (7%)	3 (1%)	19	15
All	All	766/778 (98%)	713 (93%)	46 (6%)	7 (1%)	17	12

All (7) Ramachandran outliers are listed below:

Mol	Chain	Res	Type
1	A	154	SER
1	B	154	SER
1	A	223	ASN
1	A	136	SER
1	B	223	ASN
1	A	304	LEU
1	B	304	LEU

5.3.2 Protein sidechains [i](#)

In the following table, the Percentiles column shows the percent sidechain outliers of the chain as a percentile score with respect to all X-ray entries followed by that with respect to entries of similar resolution.

The Analysed column shows the number of residues for which the sidechain conformation was analysed, and the total number of residues.

Mol	Chain	Analysed	Rotameric	Outliers	Percentiles	
1	A	312/312 (100%)	292 (94%)	20 (6%)	17	14
1	B	309/312 (99%)	281 (91%)	28 (9%)	9	6
All	All	621/624 (100%)	573 (92%)	48 (8%)	13	9

All (48) residues with a non-rotameric sidechain are listed below:

Mol	Chain	Res	Type
1	A	11	ASP
1	A	15	SER
1	A	37	LEU
1	A	41	ARG
1	A	42	SER
1	A	140	ARG
1	A	141	ARG
1	A	143	GLU
1	A	144	LYS
1	A	148	VAL
1	A	165	ARG
1	A	209	ARG
1	A	247	ARG
1	A	292	SER
1	A	300	GLU
1	A	301	THR
1	A	317	GLU
1	A	329	GLU
1	A	370	THR
1	A	382	LEU
1	B	35	ARG
1	B	45	GLU
1	B	65	SER
1	B	69[A]	GLU
1	B	69[B]	GLU
1	B	75	ASP
1	B	77	SER

Continued on next page...

Continued from previous page...

Mol	Chain	Res	Type
1	B	95	LYS
1	B	106	LEU
1	B	138	LEU
1	B	140	ARG
1	B	180	GLU
1	B	208	PRO
1	B	236	ARG
1	B	240	ARG
1	B	248	ARG
1	B	254	ARG
1	B	284	LEU
1	B	289	GLN
1	B	292	SER
1	B	298	ARG
1	B	301	THR
1	B	308	MET
1	B	312	SER
1	B	314	THR
1	B	352	LYS
1	B	380	ASN
1	B	383	GLU

Sometimes sidechains can be flipped to improve hydrogen bonding and reduce clashes. All (2) such sidechains are listed below:

Mol	Chain	Res	Type
1	B	66	HIS
1	B	105	GLN

5.3.3 RNA [i](#)

There are no RNA molecules in this entry.

5.4 Non-standard residues in protein, DNA, RNA chains [i](#)

There are no non-standard protein/DNA/RNA residues in this entry.

5.5 Carbohydrates [i](#)

There are no monosaccharides in this entry.

5.6 Ligand geometry

5 ligands are modelled in this entry.

In the following table, the Counts columns list the number of bonds (or angles) for which Mogul statistics could be retrieved, the number of bonds (or angles) that are observed in the model and the number of bonds (or angles) that are defined in the Chemical Component Dictionary. The Link column lists molecule types, if any, to which the group is linked. The Z score for a bond length (or angle) is the number of standard deviations the observed value is removed from the expected value. A bond length (or angle) with $|Z| > 2$ is considered an outlier worth inspection. RMSZ is the root-mean-square of all Z scores of the bond lengths (or angles).

Mol	Type	Chain	Res	Link	Bond lengths			Bond angles		
					Counts	RMSZ	# Z > 2	Counts	RMSZ	# Z > 2
3	OAS	B	402	2	8,9,9	1.30	1 (12%)	7,11,11	1.56	2 (28%)
2	PLP	B	401	3	15,15,16	1.53	2 (13%)	21,22,23	1.80	5 (23%)
4	MPD	A	403	-	7,7,7	0.79	0	9,10,10	1.84	1 (11%)
3	OAS	A	402	2	8,9,9	1.30	1 (12%)	7,11,11	1.66	2 (28%)
2	PLP	A	401	3	15,15,16	1.46	2 (13%)	21,22,23	1.69	4 (19%)

In the following table, the Chirals column lists the number of chiral outliers, the number of chiral centers analysed, the number of these observed in the model and the number defined in the Chemical Component Dictionary. Similar counts are reported in the Torsion and Rings columns. '-' means no outliers of that kind were identified.

Mol	Type	Chain	Res	Link	Chirals	Torsions	Rings
3	OAS	B	402	2	-	6/9/9/9	-
2	PLP	B	401	3	-	2/6/6/8	0/1/1/1
4	MPD	A	403	-	-	1/5/5/5	-
3	OAS	A	402	2	-	1/9/9/9	-
2	PLP	A	401	3	-	0/6/6/8	0/1/1/1

All (6) bond length outliers are listed below:

Mol	Chain	Res	Type	Atoms	Z	Observed(Å)	Ideal(Å)
2	B	401	PLP	P-O2P	3.92	1.69	1.54
2	A	401	PLP	C2A-C2	3.12	1.55	1.50
2	A	401	PLP	P-O2P	3.10	1.66	1.54
3	A	402	OAS	OXT-C	-2.70	1.22	1.30
2	B	401	PLP	C2A-C2	2.64	1.54	1.50
3	B	402	OAS	CB-CA	2.31	1.58	1.52

All (14) bond angle outliers are listed below:

Mol	Chain	Res	Type	Atoms	Z	Observed(°)	Ideal(°)
2	A	401	PLP	C4A-C4-C5	-4.18	116.63	120.94
2	B	401	PLP	C4A-C4-C5	-4.18	116.64	120.94
2	A	401	PLP	O4P-C5A-C5	4.10	117.05	109.36
4	A	403	MPD	O2-C2-C3	-4.07	94.03	109.27
3	A	402	OAS	CB-OG-C1A	-3.18	109.24	117.08
2	B	401	PLP	O4P-P-O1P	2.81	114.03	106.44
3	B	402	OAS	OG-CB-CA	2.63	115.64	108.26
2	B	401	PLP	O3P-P-O4P	-2.61	99.85	106.67
2	A	401	PLP	O3P-P-O1P	2.38	120.12	110.83
2	B	401	PLP	C6-N1-C2	2.32	123.41	119.20
2	A	401	PLP	C4A-C4-C3	2.21	124.21	120.52
2	B	401	PLP	O4P-C5A-C5	2.16	113.41	109.36
3	B	402	OAS	OAC-C1A-C2A	-2.09	117.37	124.77
3	A	402	OAS	OAC-C1A-C2A	-2.01	117.66	124.77

There are no chirality outliers.

All (10) torsion outliers are listed below:

Mol	Chain	Res	Type	Atoms
2	B	401	PLP	C5A-O4P-P-O2P
2	B	401	PLP	C5A-O4P-P-O3P
3	A	402	OAS	O-C-CA-CB
3	B	402	OAS	O-C-CA-CB
3	B	402	OAS	OXT-C-CA-CB
3	B	402	OAS	C2A-C1A-OG-CB
3	B	402	OAS	OAC-C1A-OG-CB
3	B	402	OAS	OXT-C-CA-N
3	B	402	OAS	O-C-CA-N
4	A	403	MPD	O2-C2-C3-C4

There are no ring outliers.

5 monomers are involved in 17 short contacts:

Mol	Chain	Res	Type	Clashes	Symm-Clashes
3	B	402	OAS	10	0
2	B	401	PLP	5	0
4	A	403	MPD	1	0
3	A	402	OAS	5	0
2	A	401	PLP	5	0

5.7 Other polymers [i](#)

There are no such residues in this entry.

5.8 Polymer linkage issues [i](#)

There are no chain breaks in this entry.

6 Fit of model and data [i](#)

6.1 Protein, DNA and RNA chains [i](#)

In the following table, the column labelled ‘#RSRZ > 2’ contains the number (and percentage) of RSRZ outliers, followed by percent RSRZ outliers for the chain as percentile scores relative to all X-ray entries and entries of similar resolution. The OWAB column contains the minimum, median, 95th percentile and maximum values of the occupancy-weighted average B-factor per residue. The column labelled ‘Q < 0.9’ lists the number of (and percentage) of residues with an average occupancy less than 0.9.

Mol	Chain	Analysed	<RSRZ>	#RSRZ>2	OWAB(Å ²)	Q<0.9
1	A	382/389 (98%)	-0.03	4 (1%) 82 85	25, 44, 61, 72	0
1	B	383/389 (98%)	-0.03	7 (1%) 68 72	27, 43, 60, 70	0
All	All	765/778 (98%)	-0.03	11 (1%) 75 78	25, 44, 60, 72	0

All (11) RSRZ outliers are listed below:

Mol	Chain	Res	Type	RSRZ
1	B	301	THR	6.3
1	B	302	GLY	3.7
1	B	357	ASP	3.4
1	A	301	THR	3.1
1	B	289	GLN	2.8
1	B	384	GLY	2.6
1	A	300	GLU	2.6
1	B	121	PRO	2.4
1	A	302	GLY	2.4
1	A	336	LEU	2.2
1	B	226	TYR	2.1

6.2 Non-standard residues in protein, DNA, RNA chains [i](#)

There are no non-standard protein/DNA/RNA residues in this entry.

6.3 Carbohydrates [i](#)

There are no monosaccharides in this entry.

6.4 Ligands [i](#)

In the following table, the Atoms column lists the number of modelled atoms in the group and the number defined in the chemical component dictionary. The B-factors column lists the minimum, median, 95th percentile and maximum values of B factors of atoms in the group. The column labelled 'Q< 0.9' lists the number of atoms with occupancy less than 0.9.

Mol	Type	Chain	Res	Atoms	RSCC	RSR	B-factors(Å ²)	Q<0.9
3	OAS	B	402	10/10	0.89	0.12	53,54,56,56	0
3	OAS	A	402	10/10	0.92	0.12	36,38,46,51	0
4	MPD	A	403	8/8	0.96	0.11	23,29,35,43	0
2	PLP	A	401	15/16	0.97	0.10	37,41,43,44	0
2	PLP	B	401	15/16	0.98	0.10	26,37,41,42	0

6.5 Other polymers [i](#)

There are no such residues in this entry.