



# Full wwPDB X-ray Structure Validation Report ⓘ

Mar 23, 2022 – 06:39 PM JST

PDB ID : 7VTC  
Title : Crystal structure of MERS main protease in complex with PF07321332  
Authors : Lin, C.; Zhong, F.L.; Zhou, X.L.; Zhang, J.; Li, J.  
Deposited on : 2021-10-28  
Resolution : 2.54 Å(reported)

This is a Full wwPDB X-ray Structure Validation Report for a publicly released PDB entry.

We welcome your comments at [validation@mail.wwpdb.org](mailto:validation@mail.wwpdb.org)

A user guide is available at

<https://www.wwpdb.org/validation/2017/XrayValidationReportHelp>

with specific help available everywhere you see the ⓘ symbol.

---

The following versions of software and data (see [references ⓘ](#)) were used in the production of this report:

MolProbity : 4.02b-467  
Mogul : 1.8.5 (274361), CSD as541be (2020)  
Xtriage (Phenix) : 1.13  
EDS : 2.27  
buster-report : 1.1.7 (2018)  
Percentile statistics : 20191225.v01 (using entries in the PDB archive December 25th 2019)  
Refmac : 5.8.0158  
CCP4 : 7.0.044 (Gargrove)  
Ideal geometry (proteins) : Engh & Huber (2001)  
Ideal geometry (DNA, RNA) : Parkinson et al. (1996)  
Validation Pipeline (wwPDB-VP) : 2.27

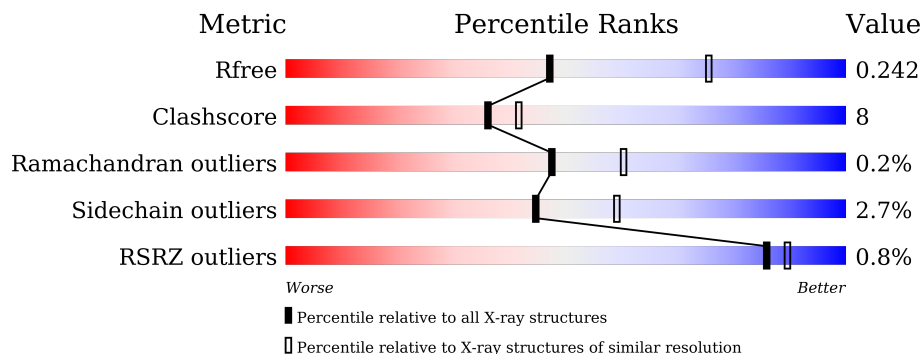
# 1 Overall quality at a glance

The following experimental techniques were used to determine the structure:

*X-RAY DIFFRACTION*

The reported resolution of this entry is 2.54 Å.

Percentile scores (ranging between 0-100) for global validation metrics of the entry are shown in the following graphic. The table shows the number of entries on which the scores are based.



Metric	Whole archive (#Entries)	Similar resolution (#Entries, resolution range(Å))
$R_{free}$	130704	1284 (2.56-2.52)
Clashscore	141614	1332 (2.56-2.52)
Ramachandran outliers	138981	1315 (2.56-2.52)
Sidechain outliers	138945	1315 (2.56-2.52)
RSRZ outliers	127900	1272 (2.56-2.52)

The table below summarises the geometric issues observed across the polymeric chains and their fit to the electron density. The red, orange, yellow and green segments of the lower bar indicate the fraction of residues that contain outliers for  $\geq 3$ , 2, 1 and 0 types of geometric quality criteria respectively. A grey segment represents the fraction of residues that are not modelled. The numeric value for each fraction is indicated below the corresponding segment, with a dot representing fractions  $\leq 5\%$ . The upper red bar (where present) indicates the fraction of residues that have poor fit to the electron density. The numeric value is given above the bar.

Mol	Chain	Length	Quality of chain
1	A	322	
1	B	322	

## 2 Entry composition i

There are 3 unique types of molecules in this entry. The entry contains 4552 atoms, of which 0 are hydrogens and 0 are deuteriums.

In the tables below, the ZeroOcc column contains the number of atoms modelled with zero occupancy, the AltConf column contains the number of residues with at least one atom in alternate conformation and the Trace column contains the number of residues modelled with at most 2 atoms.

- Molecule 1 is a protein called 3C-like proteinase.

Mol	Chain	Residues	Atoms					ZeroOcc	AltConf	Trace
			Total	C	N	O	S			
1	A	299	2231	1421	369	417	24	0	0	0
1	B	301	2238	1425	369	421	23	0	0	0

There are 46 discrepancies between the modelled and reference sequences:

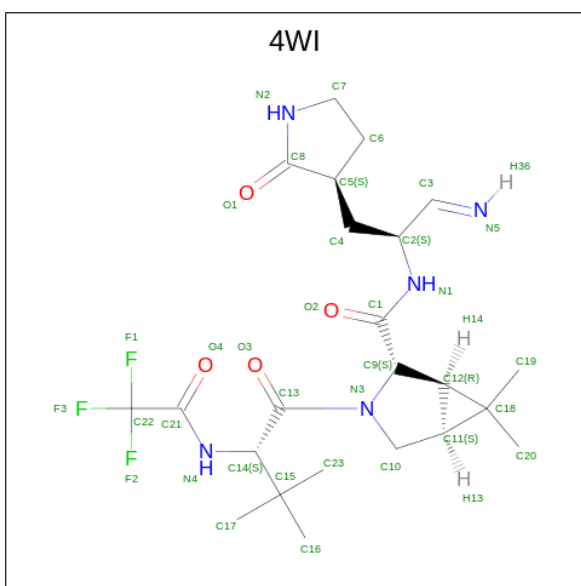
Chain	Residue	Modelled	Actual	Comment	Reference
A	1	SER	-	expression tag	UNP T2B9A8
A	2	GLY	-	expression tag	UNP T2B9A8
A	302	ILE	-	expression tag	UNP T2B9A8
A	303	LEU	-	expression tag	UNP T2B9A8
A	304	GLY	-	expression tag	UNP T2B9A8
A	305	SER	-	expression tag	UNP T2B9A8
A	306	THR	-	expression tag	UNP T2B9A8
A	307	MET	-	expression tag	UNP T2B9A8
A	308	LEU	-	expression tag	UNP T2B9A8
A	309	GLU	-	expression tag	UNP T2B9A8
A	310	ASP	-	expression tag	UNP T2B9A8
A	311	GLU	-	expression tag	UNP T2B9A8
A	312	PHE	-	expression tag	UNP T2B9A8
A	313	THR	-	expression tag	UNP T2B9A8
A	314	PRO	-	expression tag	UNP T2B9A8
A	315	GLU	-	expression tag	UNP T2B9A8
A	316	ASP	-	expression tag	UNP T2B9A8
A	317	VAL	-	expression tag	UNP T2B9A8
A	318	ASN	-	expression tag	UNP T2B9A8
A	319	MET	-	expression tag	UNP T2B9A8
A	320	GLN	-	expression tag	UNP T2B9A8
A	321	ILE	-	expression tag	UNP T2B9A8
A	322	MET	-	expression tag	UNP T2B9A8
B	1	SER	-	expression tag	UNP T2B9A8
B	2	GLY	-	expression tag	UNP T2B9A8

*Continued on next page...*

Continued from previous page...

Chain	Residue	Modelled	Actual	Comment	Reference
B	302	ILE	-	expression tag	UNP T2B9A8
B	303	LEU	-	expression tag	UNP T2B9A8
B	304	GLY	-	expression tag	UNP T2B9A8
B	305	SER	-	expression tag	UNP T2B9A8
B	306	THR	-	expression tag	UNP T2B9A8
B	307	MET	-	expression tag	UNP T2B9A8
B	308	LEU	-	expression tag	UNP T2B9A8
B	309	GLU	-	expression tag	UNP T2B9A8
B	310	ASP	-	expression tag	UNP T2B9A8
B	311	GLU	-	expression tag	UNP T2B9A8
B	312	PHE	-	expression tag	UNP T2B9A8
B	313	THR	-	expression tag	UNP T2B9A8
B	314	PRO	-	expression tag	UNP T2B9A8
B	315	GLU	-	expression tag	UNP T2B9A8
B	316	ASP	-	expression tag	UNP T2B9A8
B	317	VAL	-	expression tag	UNP T2B9A8
B	318	ASN	-	expression tag	UNP T2B9A8
B	319	MET	-	expression tag	UNP T2B9A8
B	320	GLN	-	expression tag	UNP T2B9A8
B	321	ILE	-	expression tag	UNP T2B9A8
B	322	MET	-	expression tag	UNP T2B9A8

- Molecule 2 is (1R,2S,5S)-N-{(1E,2S)-1-imino-3-[(3S)-2-oxopyrrolidin-3-yl]propan-2-yl}-6,6-dimethyl-3-[3-methyl-N-(trifluoroacetyl)-L-valyl]-3-azabicyclo[3.1.0]hexane-2-carboxamide (three-letter code: 4WI) (formula: C<sub>23</sub>H<sub>34</sub>F<sub>3</sub>N<sub>5</sub>O<sub>4</sub>) (labeled as "Ligand of Interest" by depositor).



Mol	Chain	Residues	Atoms					ZeroOcc	AltConf
			Total	C	F	N	O		
2	A	1	35	23	3	5	4	0	0


- Molecule 3 is water.

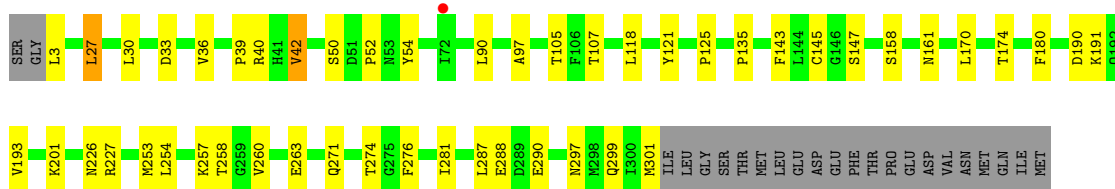
Mol	Chain	Residues	Atoms		ZeroOcc	AltConf
3	A	19	Total	O	0	0
			19	19		
3	B	29	Total	O	0	0
			29	29		

### 3 Residue-property plots [i](#)


These plots are drawn for all protein, RNA, DNA and oligosaccharide chains in the entry. The first graphic for a chain summarises the proportions of the various outlier classes displayed in the second graphic. The second graphic shows the sequence view annotated by issues in geometry and electron density. Residues are color-coded according to the number of geometric quality criteria for which they contain at least one outlier: green = 0, yellow = 1, orange = 2 and red = 3 or more. A red dot above a residue indicates a poor fit to the electron density ( $RSRZ > 2$ ). Stretches of 2 or more consecutive residues without any outlier are shown as a green connector. Residues present in the sample, but not in the model, are shown in grey.

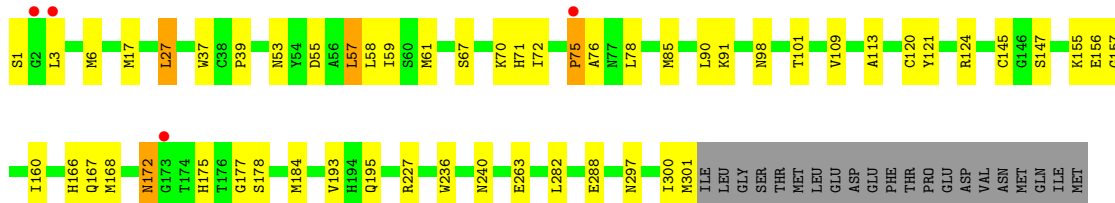
- Molecule 1: 3C-like proteinase

Chain A: 



- Molecule 1: 3C-like proteinase

Chain B: 



## 4 Data and refinement statistics i

Property	Value	Source
Space group	P 21 21 21	Depositor
Cell constants a, b, c, $\alpha$ , $\beta$ , $\gamma$	83.42Å 93.24Å 97.58Å 90.00° 90.00° 90.00°	Depositor
Resolution (Å)	48.79 – 2.54 67.41 – 2.54	Depositor EDS
% Data completeness (in resolution range)	91.0 (48.79-2.54) 84.9 (67.41-2.54)	Depositor EDS
$R_{merge}$	0.05	Depositor
$R_{sym}$	(Not available)	Depositor
$\langle I/\sigma(I) \rangle$ <sup>1</sup>	1.56 (at 2.55Å)	Xtrriage
Refinement program	PHENIX 1.12_2829	Depositor
R, $R_{free}$	0.192 , 0.242 0.192 , 0.242	Depositor DCC
$R_{free}$ test set	1993 reflections (8.44%)	wwPDB-VP
Wilson B-factor (Å <sup>2</sup> )	42.1	Xtrriage
Anisotropy	0.149	Xtrriage
Bulk solvent $k_{sol}$ (e/Å <sup>3</sup> ), $B_{sol}$ (Å <sup>2</sup> )	0.36 , 43.9	EDS
L-test for twinning <sup>2</sup>	$\langle  L  \rangle = 0.49$ , $\langle L^2 \rangle = 0.33$	Xtrriage
Estimated twinning fraction	0.014 for -h,l,k	Xtrriage
$F_o, F_c$ correlation	0.93	EDS
Total number of atoms	4552	wwPDB-VP
Average B, all atoms (Å <sup>2</sup> )	47.0	wwPDB-VP

Xtrriage's analysis on translational NCS is as follows: *The largest off-origin peak in the Patterson function is 5.34% of the height of the origin peak. No significant pseudotranslation is detected.*

<sup>1</sup>Intensities estimated from amplitudes.

<sup>2</sup>Theoretical values of  $\langle |L| \rangle$ ,  $\langle L^2 \rangle$  for acentric reflections are 0.5, 0.333 respectively for untwinned datasets, and 0.375, 0.2 for perfectly twinned datasets.

## 5 Model quality [i](#)

### 5.1 Standard geometry [i](#)

Bond lengths and bond angles in the following residue types are not validated in this section: 4WI

The Z score for a bond length (or angle) is the number of standard deviations the observed value is removed from the expected value. A bond length (or angle) with  $|Z| > 5$  is considered an outlier worth inspection. RMSZ is the root-mean-square of all Z scores of the bond lengths (or angles).

Mol	Chain	Bond lengths		Bond angles	
		RMSZ	# Z  >5	RMSZ	# Z  >5
1	A	0.44	1/2285 (0.0%)	0.59	0/3121
1	B	0.47	0/2292	0.60	0/3130
All	All	0.46	1/4577 (0.0%)	0.59	0/6251

Chiral center outliers are detected by calculating the chiral volume of a chiral center and verifying if the center is modelled as a planar moiety or with the opposite hand. A planarity outlier is detected by checking planarity of atoms in a peptide group, atoms in a mainchain group or atoms of a sidechain that are expected to be planar.

Mol	Chain	#Chirality outliers	#Planarity outliers
1	B	0	1

All (1) bond length outliers are listed below:

Mol	Chain	Res	Type	Atoms	Z	Observed(Å)	Ideal(Å)
1	A	42	VAL	CB-CG1	-5.58	1.41	1.52

There are no bond angle outliers.

There are no chirality outliers.

All (1) planarity outliers are listed below:

Mol	Chain	Res	Type	Group
1	B	75	PRO	Peptide

### 5.2 Too-close contacts [i](#)

In the following table, the Non-H and H(model) columns list the number of non-hydrogen atoms and hydrogen atoms in the chain respectively. The H(added) column lists the number of hydrogen atoms added and optimized by MolProbity. The Clashes column lists the number of clashes within



the asymmetric unit, whereas Symm-Clashes lists symmetry-related clashes.

Mol	Chain	Non-H	H(model)	H(added)	Clashes	Symm-Clashes
1	A	2231	0	2132	33	0
1	B	2238	0	2138	37	0
2	A	35	0	0	0	0
3	A	19	0	0	1	0
3	B	29	0	0	0	0
All	All	4552	0	4270	70	0

The all-atom clashscore is defined as the number of clashes found per 1000 atoms (including hydrogen atoms). The all-atom clashscore for this structure is 8.

All (70) close contacts within the same asymmetric unit are listed below, sorted by their clash magnitude.

Atom-1	Atom-2	Interatomic distance (Å)	Clash overlap (Å)
1:A:271:GLN:O	1:A:274:THR:HG22	1.67	0.93
1:B:155:LYS:NZ	1:B:157:GLY:O	2.12	0.81
1:A:258:THR:HG22	1:A:260:VAL:H	1.50	0.76
1:B:172:ASN:N	1:B:172:ASN:OD1	2.20	0.75
1:A:107:THR:HG21	1:A:161:ASN:HB3	1.76	0.66
1:B:70:LYS:H	1:B:76:ALA:CB	2.08	0.65
1:A:27:LEU:HD11	1:A:42:VAL:CG1	2.32	0.59
1:B:70:LYS:H	1:B:76:ALA:HB1	1.67	0.58
1:A:27:LEU:HD11	1:A:42:VAL:HG11	1.86	0.57
1:B:1:SER:HB2	1:B:282:LEU:HD22	1.87	0.57
1:A:170:LEU:HB2	1:A:174:THR:HG22	1.87	0.56
1:A:39:PRO:O	1:A:42:VAL:HG13	2.06	0.55
1:A:191:LYS:HG3	1:A:193:VAL:HG22	1.89	0.55
1:A:27:LEU:HD21	1:A:42:VAL:HG12	1.89	0.54
1:B:155:LYS:HG3	1:B:160:ILE:HD13	1.89	0.54
1:B:53:ASN:C	1:B:57:LEU:HD12	2.29	0.53
1:A:254:LEU:O	1:A:258:THR:HB	2.10	0.52
1:B:17:MET:HG3	1:B:120:CYS:SG	2.51	0.50
1:A:118:LEU:HD11	1:A:125:PRO:HB3	1.93	0.49
1:A:253:MET:O	1:A:257:LYS:HG2	2.12	0.49
1:A:107:THR:CG2	1:A:161:ASN:HB3	2.41	0.49
1:A:52:PRO:HG2	1:A:54:TYR:CE2	2.48	0.49
1:A:254:LEU:HD23	1:A:257:LYS:HE2	1.95	0.48
1:B:58:LEU:HD22	1:B:85:MET:HB2	1.96	0.48
1:B:121:TYR:CE1	1:B:147:SER:HB3	2.48	0.48
1:A:121:TYR:CE1	1:A:147:SER:HB3	2.49	0.48
1:B:166:HIS:HE1	1:B:175:HIS:HB3	1.79	0.48

*Continued on next page...*

*Continued from previous page...*

Atom-1	Atom-2	Interatomic distance (Å)	Clash overlap (Å)
1:A:40:ARG:HA	1:A:90:LEU:HG	1.97	0.47
1:B:71:HIS:O	1:B:72:ILE:HD13	2.13	0.47
1:B:98:ASN:HB3	1:B:101:THR:OG1	2.15	0.47
1:B:3:LEU:CD1	1:B:300:ILE:HD11	2.45	0.46
1:A:143:PHE:HB3	1:A:147:SER:OG	2.16	0.46
1:B:3:LEU:HD12	1:B:300:ILE:HD11	1.98	0.46
1:B:53:ASN:O	1:B:57:LEU:HD12	2.15	0.46
1:B:177:GLY:O	1:B:184:MET:HE2	2.15	0.46
1:A:3:LEU:HA	1:A:299:GLN:OE1	2.15	0.46
1:B:27:LEU:HD22	1:B:39:PRO:HG2	1.97	0.45
1:B:70:LYS:O	1:B:76:ALA:HB2	2.17	0.45
1:A:33:ASP:O	1:A:97:ALA:HA	2.17	0.45
1:B:236:TRP:O	1:B:240:ASN:ND2	2.44	0.45
1:A:297:ASN:O	1:A:301:MET:HG3	2.17	0.45
1:B:168:MET:HE2	1:B:168:MET:HB3	1.56	0.45
1:A:105:THR:OG1	1:A:161:ASN:ND2	2.38	0.45
1:B:57:LEU:O	1:B:61:MET:HG2	2.17	0.44
1:B:227:ARG:HB3	1:B:263:GLU:HB3	1.99	0.44
1:B:193:VAL:O	1:B:195:GLN:HG3	2.18	0.44
1:B:78:LEU:HA	1:B:78:LEU:HD23	1.75	0.43
1:A:287:LEU:HD22	1:A:287:LEU:H	1.83	0.43
1:B:37:TRP:CH2	1:B:91:LYS:HG3	2.53	0.43
1:B:109:VAL:HG22	1:B:113:ALA:HB3	2.01	0.43
1:B:166:HIS:CE1	1:B:175:HIS:HB3	2.53	0.43
1:B:61:MET:HE3	1:B:61:MET:HB3	1.89	0.43
1:A:27:LEU:CG	1:A:42:VAL:HG12	2.49	0.43
1:A:227:ARG:HB3	1:A:263:GLU:HB3	2.01	0.42
1:A:180:PHE:HB2	3:A:507:HOH:O	2.19	0.42
1:B:156:GLU:HG3	1:B:157:GLY:N	2.33	0.42
1:B:297:ASN:O	1:B:301:MET:HA	2.20	0.42
1:A:288:GLU:OE1	1:A:290:GLU:HB2	2.20	0.42
1:A:135:PRO:HG2	1:A:201:LYS:O	2.20	0.42
1:B:70:LYS:H	1:B:76:ALA:HB2	1.82	0.41
1:B:71:HIS:HB3	1:B:124:ARG:NH2	2.35	0.41
1:B:167:GLN:NE2	1:B:178:SER:OG	2.46	0.41
1:A:190:ASP:OD1	1:A:190:ASP:N	2.54	0.40
1:A:30:LEU:O	1:A:36:VAL:HA	2.22	0.40
1:A:170:LEU:HB2	1:A:174:THR:CG2	2.50	0.40
1:B:90:LEU:HD23	1:B:90:LEU:HA	1.89	0.40
1:A:276:PHE:CE2	1:A:281:ILE:HD12	2.57	0.40
1:B:37:TRP:CZ3	1:B:91:LYS:HG3	2.56	0.40

*Continued on next page...*

Continued from previous page...

Atom-1	Atom-2	Interatomic distance (Å)	Clash overlap (Å)
1:A:3:LEU:HA	1:A:3:LEU:HD12	1.88	0.40
1:B:59:ILE:HD13	1:B:59:ILE:HA	1.86	0.40

There are no symmetry-related clashes.

## 5.3 Torsion angles [i](#)

### 5.3.1 Protein backbone [i](#)

In the following table, the Percentiles column shows the percent Ramachandran outliers of the chain as a percentile score with respect to all X-ray entries followed by that with respect to entries of similar resolution.

The Analysed column shows the number of residues for which the backbone conformation was analysed, and the total number of residues.

Mol	Chain	Analysed	Favoured	Allowed	Outliers	Percentiles	
1	A	297/322 (92%)	283 (95%)	14 (5%)	0	100	100
1	B	299/322 (93%)	291 (97%)	7 (2%)	1 (0%)	41	51
All	All	596/644 (92%)	574 (96%)	21 (4%)	1 (0%)	47	60

All (1) Ramachandran outliers are listed below:

Mol	Chain	Res	Type
1	B	75	PRO

### 5.3.2 Protein sidechains [i](#)

In the following table, the Percentiles column shows the percent sidechain outliers of the chain as a percentile score with respect to all X-ray entries followed by that with respect to entries of similar resolution.

The Analysed column shows the number of residues for which the sidechain conformation was analysed, and the total number of residues.

Mol	Chain	Analysed	Rotameric	Outliers	Percentiles	
1	A	238/273 (87%)	233 (98%)	5 (2%)	53	68
1	B	238/273 (87%)	230 (97%)	8 (3%)	37	50
All	All	476/546 (87%)	463 (97%)	13 (3%)	44	59

All (13) residues with a non-rotameric sidechain are listed below:

Mol	Chain	Res	Type
1	A	27	LEU
1	A	50	SER
1	A	145	CYS
1	A	158	SER
1	A	226	ASN
1	B	6	MET
1	B	27	LEU
1	B	55	ASP
1	B	57	LEU
1	B	67	SER
1	B	145	CYS
1	B	172	ASN
1	B	288	GLU

Sometimes sidechains can be flipped to improve hydrogen bonding and reduce clashes. There are no such sidechains identified.

### 5.3.3 RNA [i](#)

There are no RNA molecules in this entry.

## 5.4 Non-standard residues in protein, DNA, RNA chains [i](#)

There are no non-standard protein/DNA/RNA residues in this entry.

## 5.5 Carbohydrates [i](#)

There are no monosaccharides in this entry.

## 5.6 Ligand geometry [i](#)

1 ligand is modelled in this entry.

In the following table, the Counts columns list the number of bonds (or angles) for which Mogul statistics could be retrieved, the number of bonds (or angles) that are observed in the model and the number of bonds (or angles) that are defined in the Chemical Component Dictionary. The Link column lists molecule types, if any, to which the group is linked. The Z score for a bond length (or angle) is the number of standard deviations the observed value is removed from the expected value. A bond length (or angle) with  $|Z| > 2$  is considered an outlier worth inspection. RMSZ is the root-mean-square of all Z scores of the bond lengths (or angles).

Mol	Type	Chain	Res	Link	Bond lengths			Bond angles		
					Counts	RMSZ	# Z  > 2	Counts	RMSZ	# Z  > 2
2	4WI	A	401	-	35,37,37	2.08	3 (8%)	45,59,59	1.77	10 (22%)

In the following table, the Chirals column lists the number of chiral outliers, the number of chiral centers analysed, the number of these observed in the model and the number defined in the Chemical Component Dictionary. Similar counts are reported in the Torsion and Rings columns. '-' means no outliers of that kind were identified.

Mol	Type	Chain	Res	Link	Chirals	Torsions	Rings
2	4WI	A	401	-	-	2/36/73/73	0/3/3/3

All (3) bond length outliers are listed below:

Mol	Chain	Res	Type	Atoms	Z	Observed(Å)	Ideal(Å)
2	A	401	4WI	C5-C8	-8.48	1.41	1.52
2	A	401	4WI	C9-C1	-6.46	1.43	1.53
2	A	401	4WI	C10-C11	2.32	1.56	1.52

All (10) bond angle outliers are listed below:

Mol	Chain	Res	Type	Atoms	Z	Observed(°)	Ideal(°)
2	A	401	4WI	C3-C2-N1	-4.36	102.53	110.54
2	A	401	4WI	C7-C6-C5	-3.65	99.84	105.75
2	A	401	4WI	C2-N1-C1	3.46	129.52	123.15
2	A	401	4WI	C7-N2-C8	-3.26	107.43	113.84
2	A	401	4WI	C10-N3-C9	-3.17	108.19	112.39
2	A	401	4WI	C4-C5-C6	-3.07	106.03	117.31
2	A	401	4WI	C9-C1-N1	-2.83	110.23	115.57
2	A	401	4WI	C4-C5-C8	-2.79	106.76	112.89
2	A	401	4WI	C13-C14-N4	2.19	109.73	107.34
2	A	401	4WI	C14-C13-N3	-2.12	115.97	118.52

There are no chirality outliers.

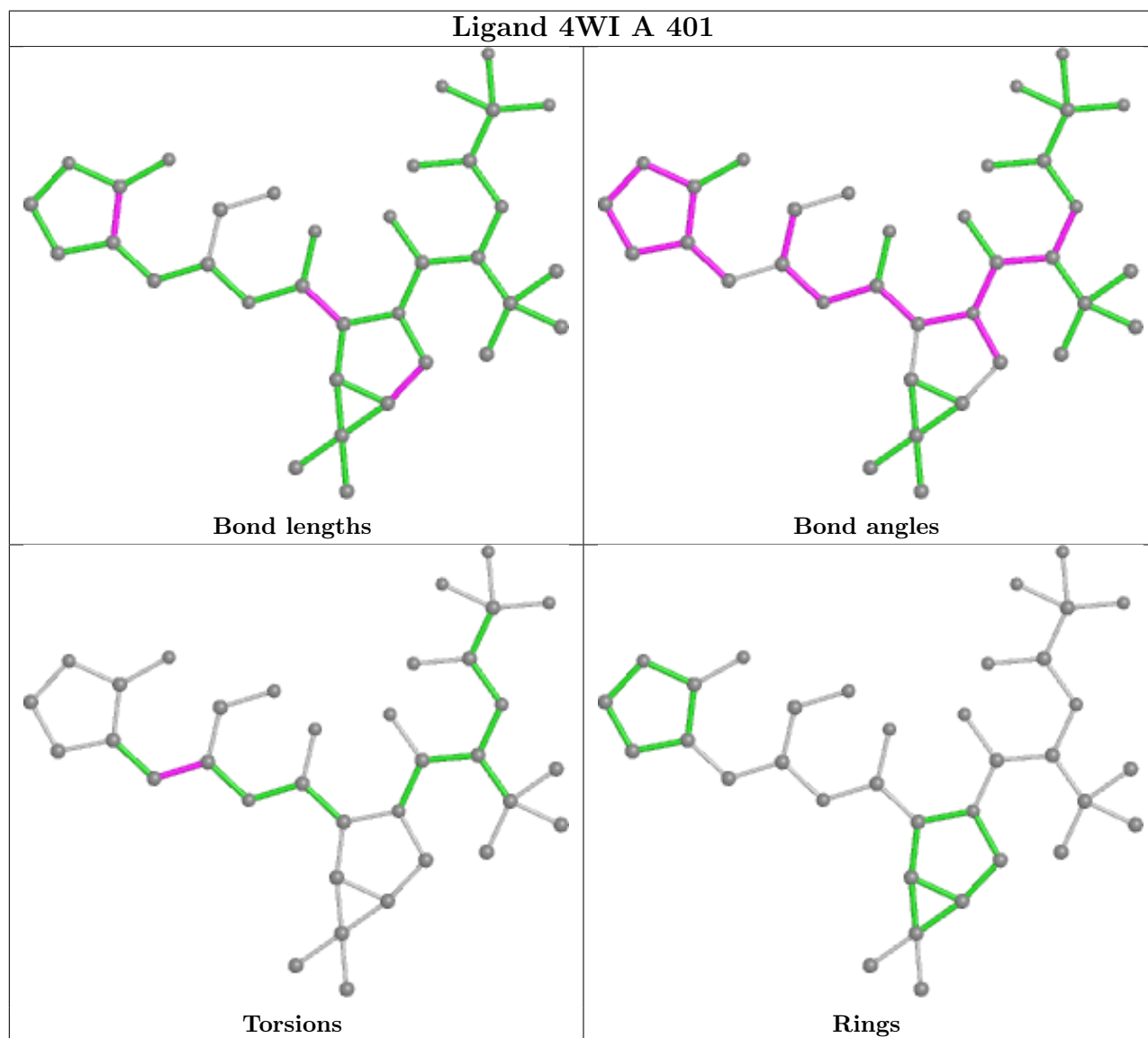
All (2) torsion outliers are listed below:

Mol	Chain	Res	Type	Atoms
2	A	401	4WI	C3-C2-C4-C5
2	A	401	4WI	N1-C2-C4-C5

There are no ring outliers.

No monomer is involved in short contacts.

The following is a two-dimensional graphical depiction of Mogul quality analysis of bond lengths, bond angles, torsion angles, and ring geometry for all instances of the Ligand of Interest. In addition, ligands with molecular weight > 250 and outliers as shown on the validation Tables will also be included. For torsion angles, if less than 5% of the Mogul distribution of torsion angles is within 10 degrees of the torsion angle in question, then that torsion angle is considered an outlier. Any bond that is central to one or more torsion angles identified as an outlier by Mogul will be highlighted in the graph. For rings, the root-mean-square deviation (RMSD) between the ring in question and similar rings identified by Mogul is calculated over all ring torsion angles. If the average RMSD is greater than 60 degrees and the minimal RMSD between the ring in question and any Mogul-identified rings is also greater than 60 degrees, then that ring is considered an outlier. The outliers are highlighted in purple. The color gray indicates Mogul did not find sufficient equivalents in the CSD to analyse the geometry.



## 5.7 Other polymers [i](#)

There are no such residues in this entry.

## 5.8 Polymer linkage issues [i](#)

There are no chain breaks in this entry.

## 6 Fit of model and data [i](#)

### 6.1 Protein, DNA and RNA chains [i](#)

In the following table, the column labelled ‘#RSRZ> 2’ contains the number (and percentage) of RSRZ outliers, followed by percent RSRZ outliers for the chain as percentile scores relative to all X-ray entries and entries of similar resolution. The OWAB column contains the minimum, median, 95<sup>th</sup> percentile and maximum values of the occupancy-weighted average B-factor per residue. The column labelled ‘Q< 0.9’ lists the number of (and percentage) of residues with an average occupancy less than 0.9.

Mol	Chain	Analysed	<RSRZ>	#RSRZ>2	OWAB(Å <sup>2</sup> )	Q<0.9
1	A	299/322 (92%)	0.21	1 (0%) 94 96	30, 46, 65, 75	0
1	B	301/322 (93%)	0.26	4 (1%) 77 82	30, 44, 71, 85	0
All	All	600/644 (93%)	0.24	5 (0%) 86 89	30, 45, 68, 85	0

All (5) RSRZ outliers are listed below:

Mol	Chain	Res	Type	RSRZ
1	A	72	ILE	3.3
1	B	2	GLY	2.7
1	B	3	LEU	2.3
1	B	173	GLY	2.0
1	B	75	PRO	2.0

### 6.2 Non-standard residues in protein, DNA, RNA chains [i](#)

There are no non-standard protein/DNA/RNA residues in this entry.

### 6.3 Carbohydrates [i](#)

There are no monosaccharides in this entry.

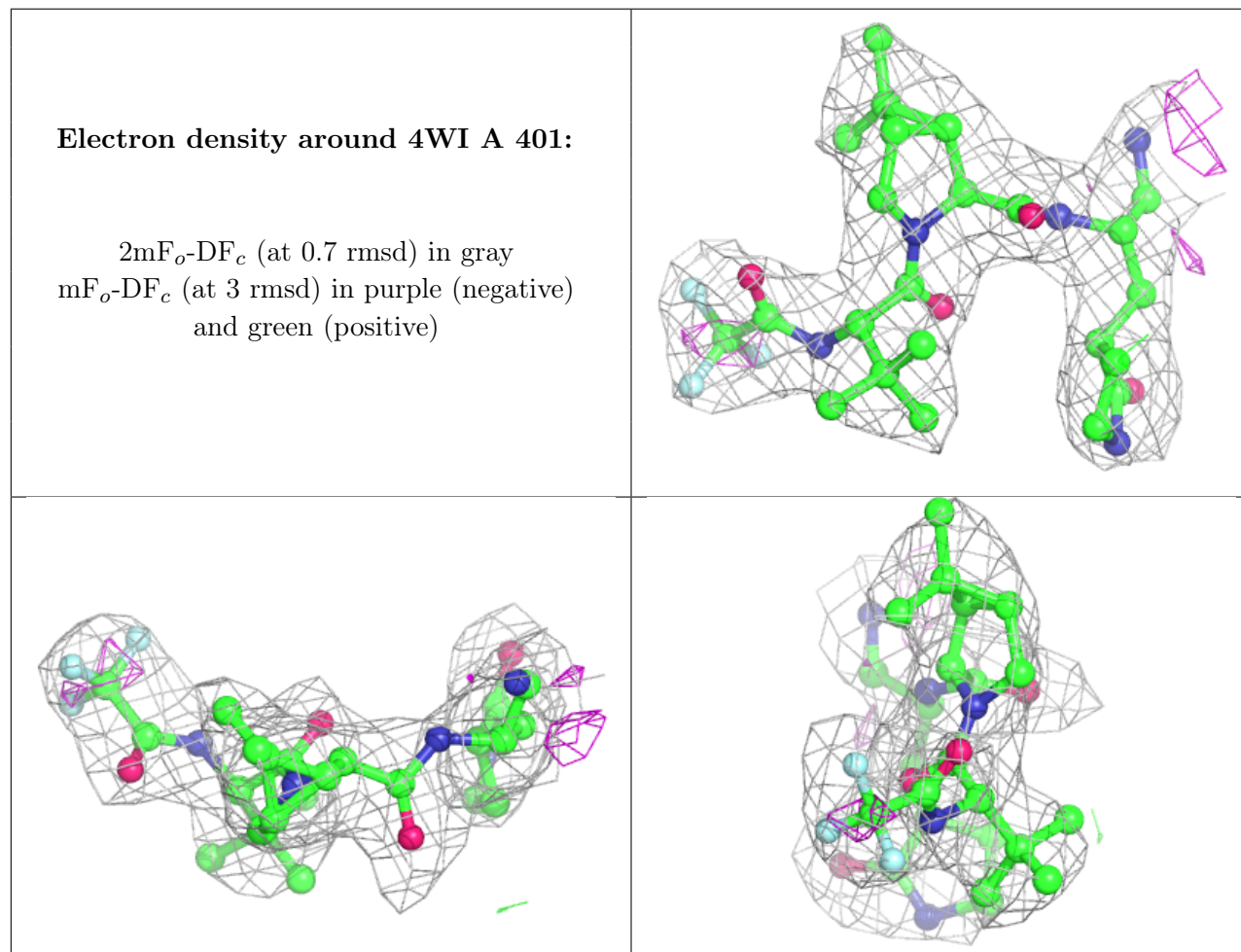
### 6.4 Ligands [i](#)

In the following table, the Atoms column lists the number of modelled atoms in the group and the number defined in the chemical component dictionary. The B-factors column lists the minimum, median, 95<sup>th</sup> percentile and maximum values of B factors of atoms in the group. The column labelled ‘Q< 0.9’ lists the number of atoms with occupancy less than 0.9.



Mol	Type	Chain	Res	Atoms	RSCC	RSR	B-factors( $\text{\AA}^2$ )	Q<0.9
2	4WI	A	401	35/35	0.93	0.21	41,51,63,71	0

The following is a graphical depiction of the model fit to experimental electron density of all instances of the Ligand of Interest. In addition, ligands with molecular weight > 250 and outliers as shown on the geometry validation Tables will also be included. Each fit is shown from different orientation to approximate a three-dimensional view.



## 6.5 Other polymers [i](#)

There are no such residues in this entry.