



# Full wwPDB X-ray Structure Validation Report ⓘ

Mar 13, 2018 – 04:12 pm GMT

PDB ID : 5VUS  
Title : Structure of rat neuronal nitric oxide synthase heme domain in complex with  
4-(2-(((2-Aminoquinolin-7-yl)methyl)amino)ethyl)-2-chlorobenzonitrile  
Authors : Li, H.; Poulos, T.L.  
Deposited on : 2017-05-19  
Resolution : 1.95 Å(reported)

This is a Full wwPDB X-ray Structure Validation Report for a publicly released PDB entry.

We welcome your comments at [validation@mail.wwpdb.org](mailto:validation@mail.wwpdb.org)

A user guide is available at

<https://www.wwpdb.org/validation/2017/XrayValidationReportHelp>

with specific help available everywhere you see the ⓘ symbol.

---

The following versions of software and data (see [references ⓘ](#)) were used in the production of this report:

MolProbity : 4.02b-467  
Mogul : 1.7.3 (157068), CSD as539be (2018)  
Xtriage (Phenix) : 1.13  
EDS : trunk31020  
Percentile statistics : 20171227.v01 (using entries in the PDB archive December 27th 2017)  
Refmac : 5.8.0158  
CCP4 : 7.0 (Gargrove)  
Ideal geometry (proteins) : Engh & Huber (2001)  
Ideal geometry (DNA, RNA) : Parkinson et al. (1996)  
Validation Pipeline (wwPDB-VP) : trunk31020

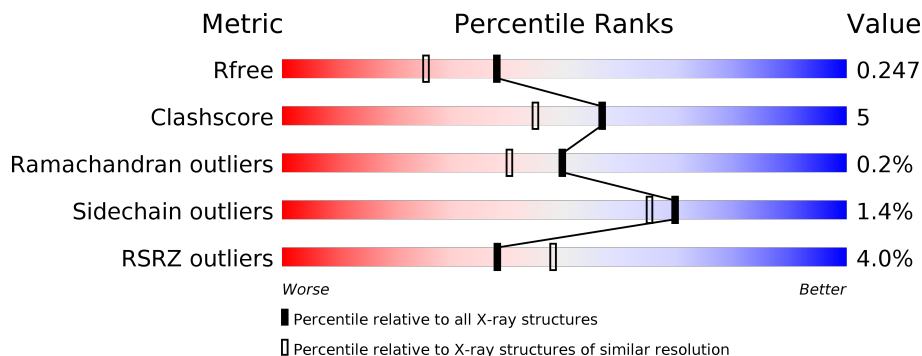
# 1 Overall quality at a glance

The following experimental techniques were used to determine the structure:

*X-RAY DIFFRACTION*

The reported resolution of this entry is 1.95 Å.

Percentile scores (ranging between 0-100) for global validation metrics of the entry are shown in the following graphic. The table shows the number of entries on which the scores are based.



Metric	Whole archive (#Entries)	Similar resolution (#Entries, resolution range(Å))
$R_{free}$	111664	2220 (1.96-1.96)
Clashscore	122126	2333 (1.96-1.96)
Ramachandran outliers	120053	2314 (1.96-1.96)
Sidechain outliers	120020	2314 (1.96-1.96)
RSRZ outliers	108989	2174 (1.96-1.96)

The table below summarises the geometric issues observed across the polymeric chains and their fit to the electron density. The red, orange, yellow and green segments on the lower bar indicate the fraction of residues that contain outliers for  $\geq 3$ , 2, 1 and 0 types of geometric quality criteria. A grey segment represents the fraction of residues that are not modelled. The numeric value for each fraction is indicated below the corresponding segment, with a dot representing fractions  $\leq 5\%$ . The upper red bar (where present) indicates the fraction of residues that have poor fit to the electron density. The numeric value is given above the bar.

Mol	Chain	Length	Quality of chain
1	A	422	
1	B	422	

## 2 Entry composition i

There are 7 unique types of molecules in this entry. The entry contains 7181 atoms, of which 0 are hydrogens and 0 are deuteriums.

In the tables below, the ZeroOcc column contains the number of atoms modelled with zero occupancy, the AltConf column contains the number of residues with at least one atom in alternate conformation and the Trace column contains the number of residues modelled with at most 2 atoms.

- Molecule 1 is a protein called Nitric oxide synthase, brain.

Mol	Chain	Residues	Atoms					ZeroOcc	AltConf	Trace
			Total	C	N	O	S			
1	A	410	Total 3348	C 2142	N 572	O 612	S 22	0	3	0
1	B	411	Total 3357	C 2148	N 574	O 614	S 21	0	3	0

- Molecule 2 is PROTOPORPHYRIN IX CONTAINING FE (three-letter code: HEM) (formula:  $C_{34}H_{32}FeN_4O_4$ ).



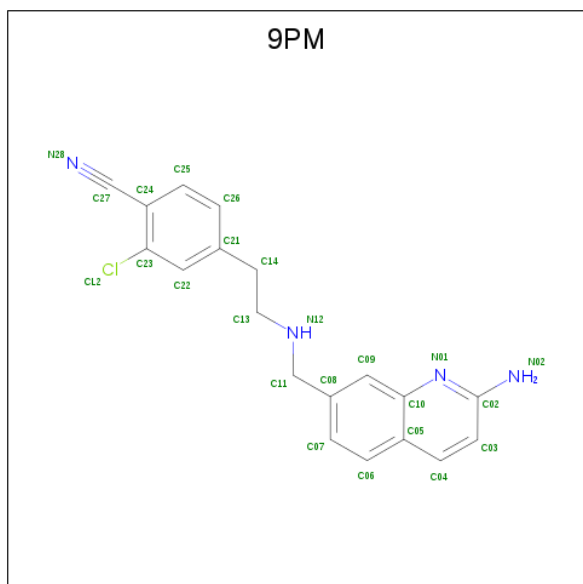
Mol	Chain	Residues	Atoms					ZeroOcc	AltConf
			Total	C	Fe	N	O		
2	A	1	Total 43	C 34	Fe 1	N 4	O 4	0	0
2	B	1	Total 43	C 34	Fe 1	N 4	O 4	0	0

- Molecule 3 is 5,6,7,8-TETRAHYDROBIOPTERIN (three-letter code: H4B) (formula:  $C_9H_{15}N_5O_3$ ).



Mol	Chain	Residues	Atoms				ZeroOcc	AltConf
			Total	C	N	O		
3	A	1	17	9	5	3	0	0
3	B	1	17	9	5	3	0	0

- Molecule 4 is 4-(2-{(2-aminoquinolin-7-yl)methyl}amino)ethyl)-2-chlorobenzonitrile (three-letter code: 9PM) (formula: C<sub>19</sub>H<sub>17</sub>ClN<sub>4</sub>).



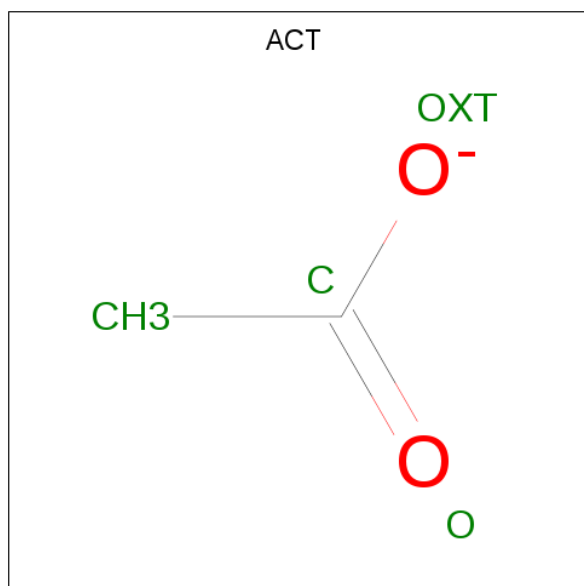
Mol	Chain	Residues	Atoms				ZeroOcc	AltConf
			Total	C	Cl	N		
4	A	1	24	19	1	4	0	0

*Continued on next page...*

Continued from previous page...

Mol	Chain	Residues	Atoms				ZeroOcc	AltConf
			Total	C	Cl	N		
4	B	1	24	19	1	4	0	0

- Molecule 5 is ACETATE ION (three-letter code: ACT) (formula: C<sub>2</sub>H<sub>3</sub>O<sub>2</sub>).



Mol	Chain	Residues	Atoms			ZeroOcc	AltConf
			Total	C	O		
5	A	1	4	2	2	0	0
5	B	1	4	2	2	0	0

- Molecule 6 is ZINC ION (three-letter code: ZN) (formula: Zn).

Mol	Chain	Residues	Atoms		ZeroOcc	AltConf
			Total	Zn		
6	A	1	1	1	0	0

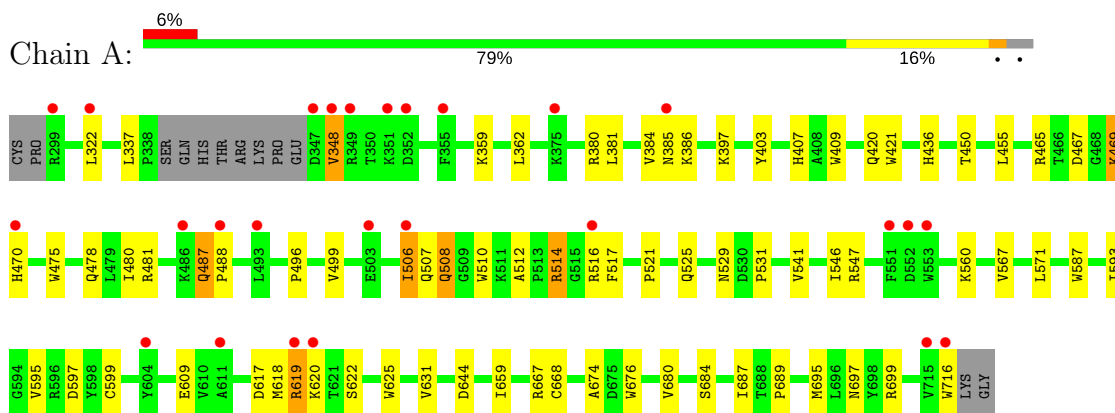
- Molecule 7 is water.

Mol	Chain	Residues	Atoms		ZeroOcc	AltConf
			Total	O		
7	A	131	131	131	0	0
7	B	168	168	168	0	0

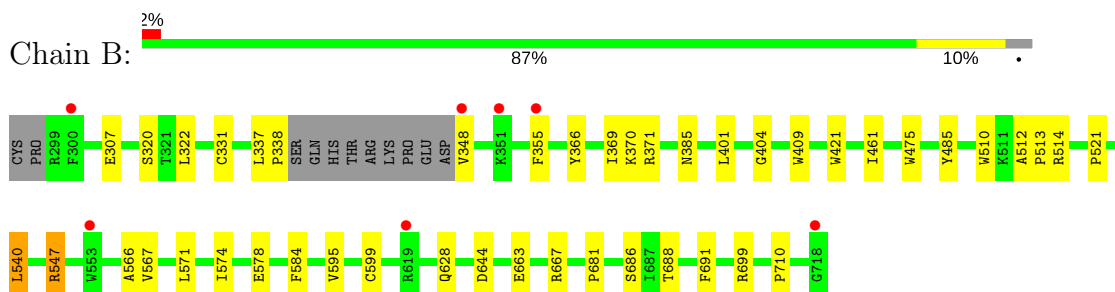
### 3 Residue-property plots [i](#)

These plots are drawn for all protein, RNA and DNA chains in the entry. The first graphic for a chain summarises the proportions of the various outlier classes displayed in the second graphic. The second graphic shows the sequence view annotated by issues in geometry and electron density. Residues are color-coded according to the number of geometric quality criteria for which they contain at least one outlier: green = 0, yellow = 1, orange = 2 and red = 3 or more. A red dot above a residue indicates a poor fit to the electron density ( $RSRZ > 2$ ). Stretches of 2 or more consecutive residues without any outlier are shown as a green connector. Residues present in the sample, but not in the model, are shown in grey.

- Molecule 1: Nitric oxide synthase, brain



- Molecule 1: Nitric oxide synthase, brain



## 4 Data and refinement statistics

Property	Value	Source
Space group	P 21 21 21	Depositor
Cell constants a, b, c, $\alpha$ , $\beta$ , $\gamma$	51.69Å 110.98Å 165.19Å 90.00° 90.00° 90.00°	Depositor
Resolution (Å)	55.49 – 1.95 55.49 – 1.95	Depositor EDS
% Data completeness (in resolution range)	97.9 (55.49-1.95) 98.1 (55.49-1.95)	Depositor EDS
$R_{merge}$	0.11	Depositor
$R_{sym}$	0.11	Depositor
$\langle I/\sigma(I) \rangle$ <sup>1</sup>	1.29 (at 1.95Å)	Xtrriage
Refinement program	PHENIX 1.9_1692	Depositor
R, $R_{free}$	0.192 , 0.245 0.199 , 0.247	Depositor DCC
$R_{free}$ test set	3428 reflections (4.97%)	wwPDB-VP
Wilson B-factor (Å <sup>2</sup> )	32.1	Xtrriage
Anisotropy	1.304	Xtrriage
Bulk solvent $k_{sol}$ (e/Å <sup>3</sup> ), $B_{sol}$ (Å <sup>2</sup> )	0.35 , 54.6	EDS
L-test for twinning <sup>2</sup>	$\langle  L  \rangle = 0.48$ , $\langle L^2 \rangle = 0.31$	Xtrriage
Estimated twinning fraction	No twinning to report.	Xtrriage
$F_o, F_c$ correlation	0.96	EDS
Total number of atoms	7181	wwPDB-VP
Average B, all atoms (Å <sup>2</sup> )	61.0	wwPDB-VP

Xtrriage's analysis on translational NCS is as follows: *The largest off-origin peak in the Patterson function is 5.15% of the height of the origin peak. No significant pseudotranslation is detected.*

<sup>1</sup>Intensities estimated from amplitudes.

<sup>2</sup>Theoretical values of  $\langle |L| \rangle$ ,  $\langle L^2 \rangle$  for acentric reflections are 0.5, 0.333 respectively for untwinned datasets, and 0.375, 0.2 for perfectly twinned datasets.

## 5 Model quality [i](#)

### 5.1 Standard geometry [i](#)

Bond lengths and bond angles in the following residue types are not validated in this section: HEM, ZN, 9PM, H4B, ACT

The Z score for a bond length (or angle) is the number of standard deviations the observed value is removed from the expected value. A bond length (or angle) with  $|Z| > 5$  is considered an outlier worth inspection. RMSZ is the root-mean-square of all Z scores of the bond lengths (or angles).

Mol	Chain	Bond lengths		Bond angles	
		RMSZ	# Z  >5	RMSZ	# Z  >5
1	A	0.38	0/3447	0.51	0/4676
1	B	0.38	0/3459	0.49	0/4689
All	All	0.38	0/6906	0.50	0/9365

Chiral center outliers are detected by calculating the chiral volume of a chiral center and verifying if the center is modelled as a planar moiety or with the opposite hand. A planarity outlier is detected by checking planarity of atoms in a peptide group, atoms in a mainchain group or atoms of a sidechain that are expected to be planar.

Mol	Chain	#Chirality outliers	#Planarity outliers
1	A	0	1

There are no bond length outliers.

There are no bond angle outliers.

There are no chirality outliers.

All (1) planarity outliers are listed below:

Mol	Chain	Res	Type	Group
1	A	487	GLN	Peptide

### 5.2 Too-close contacts [i](#)

In the following table, the Non-H and H(model) columns list the number of non-hydrogen atoms and hydrogen atoms in the chain respectively. The H(added) column lists the number of hydrogen atoms added and optimized by MolProbity. The Clashes column lists the number of clashes within the asymmetric unit, whereas Symm-Clashes lists symmetry related clashes.



Mol	Chain	Non-H	H(model)	H(added)	Clashes	Symm-Clashes
1	A	3348	0	3258	44	0
1	B	3357	0	3275	27	0
2	A	43	0	30	3	0
2	B	43	0	30	1	0
3	A	17	0	15	0	0
3	B	17	0	15	0	0
4	A	24	0	0	3	0
4	B	24	0	0	1	0
5	A	4	0	3	0	0
5	B	4	0	3	0	0
6	A	1	0	0	0	0
7	A	131	0	0	2	0
7	B	168	0	0	2	0
All	All	7181	0	6629	73	0

The all-atom clashscore is defined as the number of clashes found per 1000 atoms (including hydrogen atoms). The all-atom clashscore for this structure is 5.

All (73) close contacts within the same asymmetric unit are listed below, sorted by their clash magnitude.

Atom-1	Atom-2	Interatomic distance (Å)	Clash overlap (Å)
1:A:619:ARG:HG3	1:A:620:LYS:H	1.50	0.77
2:B:801:HEM:HBB2	2:B:801:HEM:HHC	1.68	0.75
1:B:663:GLU:HB3	1:B:667:ARG:HH12	1.54	0.73
1:B:355:PHE:CE1	1:B:385:ASN:HB3	2.26	0.71
1:A:547:ARG:NH1	1:A:644:ASP:OD1	2.23	0.71
1:A:359:LYS:HZ3	1:A:381:LEU:HD21	1.56	0.70
2:A:801:HEM:HHC	2:A:801:HEM:HBB2	1.74	0.70
1:A:348:VAL:HG12	1:A:465:ARG:HD3	1.76	0.66
1:B:320:SER:O	7:B:901:HOH:O	2.13	0.66
1:B:307[A]:GLU:OE2	7:B:902:HOH:O	2.16	0.62
2:A:801:HEM:HMC2	2:A:801:HEM:HBC2	1.82	0.62
1:A:420:GLN:HE21	1:A:587:TRP:HH2	1.49	0.61
1:A:478:GLN:HB2	1:A:481:ARG:HG3	1.81	0.61
1:A:567:VAL:HG21	4:A:803:9PM:C07	2.32	0.59
1:A:436:HIS:ND1	7:A:901:HOH:O	2.32	0.59
1:A:386:LYS:NZ	7:A:904:HOH:O	2.37	0.57
1:A:487:GLN:HB2	1:A:488:PRO:HD3	1.87	0.57
1:A:546:ILE:HG12	1:A:560:LYS:HA	1.89	0.55
1:B:571:LEU:HD21	1:B:578:GLU:HG2	1.90	0.54
1:B:567:VAL:HG21	4:B:803:9PM:C07	2.38	0.53
1:A:362:LEU:HD11	1:A:384:VAL:HG21	1.90	0.53

*Continued on next page...*

*Continued from previous page...*

Atom-1	Atom-2	Interatomic distance (Å)	Clash overlap (Å)
1:A:469:LYS:HE3	1:A:470:HIS:CD2	2.43	0.53
1:B:663:GLU:HB3	1:B:667:ARG:NH1	2.22	0.52
1:A:322:LEU:HD13	1:A:699:ARG:HH21	1.75	0.50
1:B:366:TYR:HA	1:B:369:ILE:HG12	1.94	0.49
1:A:380:ARG:NH2	1:A:397:LYS:HG2	2.27	0.49
1:A:510:TRP:CE2	1:A:521:PRO:HD3	2.48	0.49
1:B:369:ILE:O	1:B:371:ARG:HG2	2.14	0.48
1:A:508:GLN:HE22	1:A:716:TRP:HZ3	1.61	0.47
1:B:322:LEU:HB2	1:B:699:ARG:HB2	1.96	0.47
1:A:659:ILE:HG13	1:A:689:PRO:HB2	1.97	0.46
1:A:506:ILE:HG13	1:A:507:GLN:N	2.31	0.46
1:B:370:LYS:HG3	1:B:371:ARG:NH2	2.30	0.45
1:A:403:TYR:CE1	1:A:407:HIS:CE1	3.05	0.45
1:A:409:TRP:CE3	1:A:421:TRP:HA	2.52	0.44
1:A:684:SER:HB3	1:A:687:ILE:HD11	1.99	0.44
1:A:512:ALA:C	1:A:514:ARG:H	2.21	0.44
2:A:801:HEM:HBA1	4:A:803:9PM:C09	2.48	0.44
1:A:455:LEU:HD12	1:A:587:TRP:HB3	2.00	0.44
1:B:595:VAL:O	1:B:599:CYS:HB2	2.17	0.44
1:A:593:ILE:HA	1:A:597:ASP:HB2	2.00	0.43
1:B:409:TRP:CE3	1:B:421:TRP:HA	2.53	0.43
1:B:566:ALA:HA	1:B:584:PHE:O	2.19	0.43
1:A:667:ARG:NH1	1:A:668[A]:CYS:SG	2.92	0.43
1:A:450:THR:HA	1:A:455:LEU:HD22	2.01	0.43
1:B:485:TYR:CZ	1:B:514:ARG:HA	2.54	0.43
1:A:362:LEU:HA	1:A:362:LEU:HD23	1.88	0.43
1:A:465:ARG:HH12	1:A:571:LEU:HD11	1.84	0.42
1:A:631:VAL:HG11	1:B:628:GLN:HG3	2.02	0.42
1:B:475:TRP:CE2	1:B:710:PRO:HB2	2.55	0.42
1:A:487:GLN:HB2	1:A:488:PRO:CD	2.49	0.42
1:A:609:GLU:CD	1:A:609:GLU:H	2.22	0.42
1:B:337:LEU:HA	1:B:338:PRO:HD2	1.79	0.42
1:A:674:ALA:HB3	1:A:695:MET:HB3	2.01	0.42
1:B:401:LEU:HD11	1:B:461:ILE:HG21	2.02	0.42
1:B:547:ARG:NH2	1:B:644:ASP:OD1	2.53	0.41
1:A:525:GLN:HG3	1:A:529:ASN:O	2.20	0.41
1:A:516:ARG:HG3	1:A:517:PHE:CD1	2.56	0.41
1:A:618:MET:HA	1:A:625:TRP:CD1	2.55	0.41
1:B:512:ALA:HA	1:B:513:PRO:HD3	1.96	0.41
1:A:676:TRP:CZ2	1:A:680:VAL:HG21	2.56	0.41
1:B:510:TRP:CE2	1:B:521:PRO:HD3	2.56	0.41

*Continued on next page...*

Continued from previous page...

Atom-1	Atom-2	Interatomic distance (Å)	Clash overlap (Å)
1:A:337:LEU:HD21	4:A:803:9PM:CL2	2.58	0.41
1:B:404:GLY:HA3	1:B:574:ILE:HD13	2.03	0.41
1:A:480:ILE:HD13	1:A:541:VAL:HG13	2.03	0.41
1:A:496:PRO:HA	1:A:499:VAL:HG23	2.03	0.40
1:A:595:VAL:O	1:A:599:CYS:HB2	2.21	0.40
1:A:348:VAL:HG11	1:A:467:ASP:HA	2.04	0.40
1:A:475:TRP:CZ2	1:A:531:PRO:HG3	2.56	0.40
1:A:697:ASN:HB3	1:B:331:CYS:HB3	2.03	0.40
1:B:540:LEU:HA	1:B:540:LEU:HD12	1.87	0.40
1:B:681:PRO:HG2	1:B:688:THR:HG21	2.04	0.40
1:B:686:SER:HA	1:B:691:PHE:CG	2.57	0.40

There are no symmetry-related clashes.

## 5.3 Torsion angles [i](#)

### 5.3.1 Protein backbone [i](#)

In the following table, the Percentiles column shows the percent Ramachandran outliers of the chain as a percentile score with respect to all X-ray entries followed by that with respect to entries of similar resolution.

The Analysed column shows the number of residues for which the backbone conformation was analysed, and the total number of residues.

Mol	Chain	Analysed	Favoured	Allowed	Outliers	Percentiles	
1	A	408/422 (97%)	391 (96%)	15 (4%)	2 (0%)	31	18
1	B	410/422 (97%)	399 (97%)	11 (3%)	0	100	100
All	All	818/844 (97%)	790 (97%)	26 (3%)	2 (0%)	49	40

All (2) Ramachandran outliers are listed below:

Mol	Chain	Res	Type
1	A	514	ARG
1	A	619	ARG

### 5.3.2 Protein sidechains [i](#)

In the following table, the Percentiles column shows the percent sidechain outliers of the chain as a percentile score with respect to all X-ray entries followed by that with respect to entries of similar resolution.

The Analysed column shows the number of residues for which the sidechain conformation was analysed, and the total number of residues.

Mol	Chain	Analysed	Rotameric	Outliers	Percentiles	
1	A	368/377 (98%)	361 (98%)	7 (2%)	60	54
1	B	369/377 (98%)	366 (99%)	3 (1%)	83	82
All	All	737/754 (98%)	727 (99%)	10 (1%)	69	65

All (10) residues with a non-rotameric sidechain are listed below:

Mol	Chain	Res	Type
1	A	348	VAL
1	A	385	ASN
1	A	469	LYS
1	A	506	ILE
1	A	508	GLN
1	A	617	ASP
1	A	622	SER
1	B	348	VAL
1	B	540	LEU
1	B	547	ARG

Some sidechains can be flipped to improve hydrogen bonding and reduce clashes. There are no such sidechains identified.

### 5.3.3 RNA [i](#)

There are no RNA molecules in this entry.

## 5.4 Non-standard residues in protein, DNA, RNA chains [i](#)

There are no non-standard protein/DNA/RNA residues in this entry.

## 5.5 Carbohydrates [i](#)

There are no carbohydrates in this entry.

## 5.6 Ligand geometry

Of 9 ligands modelled in this entry, 1 is monoatomic - leaving 8 for Mogul analysis.

In the following table, the Counts columns list the number of bonds (or angles) for which Mogul statistics could be retrieved, the number of bonds (or angles) that are observed in the model and the number of bonds (or angles) that are defined in the Chemical Component Dictionary. The Link column lists molecule types, if any, to which the group is linked. The Z score for a bond length (or angle) is the number of standard deviations the observed value is removed from the expected value. A bond length (or angle) with  $|Z| > 2$  is considered an outlier worth inspection. RMSZ is the root-mean-square of all Z scores of the bond lengths (or angles).

Mol	Type	Chain	Res	Link	Bond lengths			Bond angles		
					Counts	RMSZ	# Z  > 2	Counts	RMSZ	# Z  > 2
2	HEM	A	801	1	27,50,50	2.14	5 (18%)	17,82,82	1.73	5 (29%)
3	H4B	A	802	-	15,18,18	0.76	0	11,26,26	2.31	4 (36%)
4	9PM	A	803	-	26,26,26	2.16	2 (7%)	31,35,35	1.20	3 (9%)
5	ACT	A	804	-	1,3,3	1.59	0	0,3,3	0.00	-
2	HEM	B	801	1	27,50,50	2.16	5 (18%)	17,82,82	1.94	4 (23%)
3	H4B	B	802	-	15,18,18	0.97	0	11,26,26	2.54	4 (36%)
4	9PM	B	803	-	26,26,26	2.11	2 (7%)	31,35,35	1.40	5 (16%)
5	ACT	B	804	-	1,3,3	1.35	0	0,3,3	0.00	-

In the following table, the Chirals column lists the number of chiral outliers, the number of chiral centers analysed, the number of these observed in the model and the number defined in the Chemical Component Dictionary. Similar counts are reported in the Torsion and Rings columns. '-' means no outliers of that kind were identified.

Mol	Type	Chain	Res	Link	Chirals	Torsions	Rings
2	HEM	A	801	1	-	0/6/54/54	0/0/8/8
3	H4B	A	802	-	-	0/8/17/17	0/2/2/2
4	9PM	A	803	-	-	0/9/9/9	0/3/3/3
5	ACT	A	804	-	-	0/0/0/0	0/0/0/0
2	HEM	B	801	1	-	0/6/54/54	0/0/8/8
3	H4B	B	802	-	-	0/8/17/17	0/2/2/2
4	9PM	B	803	-	-	0/9/9/9	0/3/3/3
5	ACT	B	804	-	-	0/0/0/0	0/0/0/0

All (14) bond length outliers are listed below:

Mol	Chain	Res	Type	Atoms	Z	Observed(Å)	Ideal(Å)
4	A	803	9PM	C24-C27	-9.87	1.29	1.44
4	B	803	9PM	C24-C27	-9.60	1.29	1.44
2	A	801	HEM	C3B-C2B	-4.54	1.34	1.40

*Continued on next page...*

Continued from previous page...

Mol	Chain	Res	Type	Atoms	Z	Observed(Å)	Ideal(Å)
2	B	801	HEM	C3B-C2B	-4.36	1.34	1.40
2	A	801	HEM	C3C-C2C	-3.93	1.34	1.40
2	B	801	HEM	C3C-C2C	-3.78	1.35	1.40
4	A	803	9PM	C23-CL2	2.39	1.79	1.73
4	B	803	9PM	C23-CL2	2.47	1.79	1.73
2	B	801	HEM	C3B-CAB	3.66	1.55	1.47
2	A	801	HEM	C3B-CAB	3.78	1.55	1.47
2	A	801	HEM	C3C-CAC	3.91	1.55	1.47
2	B	801	HEM	C3C-CAC	3.94	1.55	1.47
2	B	801	HEM	C3D-C2D	5.25	1.53	1.37
2	A	801	HEM	C3D-C2D	5.30	1.53	1.37

All (25) bond angle outliers are listed below:

Mol	Chain	Res	Type	Atoms	Z	Observed(°)	Ideal(°)
2	B	801	HEM	CBA-CAA-C2A	-4.29	104.29	112.48
2	B	801	HEM	C1D-C2D-C3D	-4.12	104.13	107.00
4	B	803	9PM	C11-C08-C09	-3.46	116.34	121.69
2	A	801	HEM	CBD-CAD-C3D	-3.20	106.36	112.47
3	A	802	H4B	N3-C2-N1	-3.10	120.50	125.43
2	A	801	HEM	CBA-CAA-C2A	-2.84	107.05	112.48
4	A	803	9PM	C13-C14-C21	-2.77	106.94	112.85
3	B	802	H4B	N3-C2-N1	-2.74	121.07	125.43
2	B	801	HEM	CBD-CAD-C3D	-2.70	107.31	112.47
4	A	803	9PM	C11-C08-C09	-2.68	117.54	121.69
2	B	801	HEM	CAD-CBD-CGD	-2.68	108.08	112.66
2	A	801	HEM	C1D-C2D-C3D	-2.63	105.17	107.00
2	A	801	HEM	CAD-CBD-CGD	-2.22	108.86	112.66
4	B	803	9PM	C11-N12-C13	-2.22	105.59	113.39
4	B	803	9PM	C03-C02-N01	-2.18	119.31	122.03
4	A	803	9PM	C25-C24-C23	2.05	120.34	118.41
4	B	803	9PM	C04-C03-C02	2.22	121.26	119.45
3	B	802	H4B	C2-N1-C8A	2.48	120.06	114.50
3	A	802	H4B	C2-N1-C8A	2.61	120.37	114.50
2	A	801	HEM	CMC-C2C-C3C	2.82	130.02	124.88
4	B	803	9PM	C24-C23-CL2	2.89	122.14	119.41
3	B	802	H4B	C4-N3-C2	3.11	120.53	116.06
3	A	802	H4B	C4-N3-C2	3.36	120.89	116.06
3	A	802	H4B	C4-C4A-C8A	4.66	118.78	114.56
3	B	802	H4B	C4-C4A-C8A	6.03	120.02	114.56

There are no chirality outliers.

There are no torsion outliers.

There are no ring outliers.

4 monomers are involved in 7 short contacts:

Mol	Chain	Res	Type	Clashes	Symm-Clashes
2	A	801	HEM	3	0
4	A	803	9PM	3	0
2	B	801	HEM	1	0
4	B	803	9PM	1	0

## 5.7 Other polymers [i](#)

There are no such residues in this entry.

## 5.8 Polymer linkage issues [i](#)

There are no chain breaks in this entry.

## 6 Fit of model and data

### 6.1 Protein, DNA and RNA chains

In the following table, the column labelled ‘#RSRZ > 2’ contains the number (and percentage) of RSRZ outliers, followed by percent RSRZ outliers for the chain as percentile scores relative to all X-ray entries and entries of similar resolution. The OWAB column contains the minimum, median, 95<sup>th</sup> percentile and maximum values of the occupancy-weighted average B-factor per residue. The column labelled ‘Q < 0.9’ lists the number of (and percentage) of residues with an average occupancy less than 0.9.

Mol	Chain	Analysed	<RSRZ>	#RSRZ>2	OWAB(Å <sup>2</sup> )	Q<0.9
1	A	410/422 (97%)	0.51	26 (6%) 20 29	33, 64, 113, 152	0
1	B	411/422 (97%)	0.21	7 (1%) 70 78	32, 52, 84, 117	0
All	All	821/844 (97%)	0.36	33 (4%) 38 48	32, 57, 107, 152	0

All (33) RSRZ outliers are listed below:

Mol	Chain	Res	Type	RSRZ
1	A	348	VAL	5.4
1	A	355	PHE	5.0
1	A	470	HIS	4.6
1	A	551	PHE	4.5
1	A	619	ARG	4.2
1	B	351	LYS	3.7
1	B	348	VAL	3.5
1	A	715	VAL	3.4
1	A	716	TRP	3.3
1	A	516	ARG	3.3
1	A	349	ARG	3.1
1	B	300	PHE	3.1
1	A	322	LEU	2.8
1	A	488	PRO	2.8
1	A	604	TYR	2.7
1	A	611	ALA	2.7
1	A	506	ILE	2.6
1	A	347	ASP	2.6
1	A	552	ASP	2.5
1	A	351	LYS	2.5
1	A	620	LYS	2.5
1	A	299	ARG	2.5
1	A	486	LYS	2.4
1	A	493	LEU	2.4

*Continued on next page...*



*Continued from previous page...*

Mol	Chain	Res	Type	RSRZ
1	A	352	ASP	2.3
1	B	718	GLY	2.3
1	A	385	ASN	2.3
1	B	355	PHE	2.2
1	A	503	GLU	2.2
1	A	553	TRP	2.1
1	B	619	ARG	2.1
1	A	375	LYS	2.1
1	B	553	TRP	2.0

## 6.2 Non-standard residues in protein, DNA, RNA chains [i](#)

There are no non-standard protein/DNA/RNA residues in this entry.

## 6.3 Carbohydrates [i](#)

There are no carbohydrates in this entry.

## 6.4 Ligands [i](#)

In the following table, the Atoms column lists the number of modelled atoms in the group and the number defined in the chemical component dictionary. The B-factors column lists the minimum, median, 95<sup>th</sup> percentile and maximum values of B factors of atoms in the group. The column labelled 'Q< 0.9' lists the number of atoms with occupancy less than 0.9.

Mol	Type	Chain	Res	Atoms	RSCC	RSR	B-factors(Å <sup>2</sup> )	Q<0.9
4	9PM	B	803	24/24	0.93	0.14	32,49,85,106	0
3	H4B	A	802	17/17	0.93	0.12	34,41,50,50	0
5	ACT	A	804	4/4	0.95	0.15	58,59,63,64	0
3	H4B	B	802	17/17	0.95	0.10	30,42,49,59	0
4	9PM	A	803	24/24	0.95	0.13	33,52,102,113	0
5	ACT	B	804	4/4	0.96	0.25	85,86,87,87	0
2	HEM	B	801	43/43	0.97	0.12	30,41,56,69	0
2	HEM	A	801	43/43	0.98	0.11	33,44,61,78	0
6	ZN	A	805	1/1	0.99	0.11	46,46,46,46	0

## 6.5 Other polymers [i](#)

There are no such residues in this entry.