



Full wwPDB EM Validation Report ⓘ

Sep 9, 2024 – 09:01 AM EDT

PDB ID : 8VUU
EMDB ID : EMD-43540
Title : Human GluN1-2B with Fab 007-168
Authors : Michalski, K.; Furukawa, H.
Deposited on : 2024-01-29
Resolution : 4.05 Å (reported)

This is a Full wwPDB EM Validation Report for a publicly released PDB entry.

We welcome your comments at validation@mail.wwpdb.org

A user guide is available at

<https://www.wwpdb.org/validation/2017/EMValidationReportHelp>

with specific help available everywhere you see the ⓘ symbol.

The types of validation reports are described at

<http://www.wwpdb.org/validation/2017/FAQs#types>.

The following versions of software and data (see [references ⓘ](#)) were used in the production of this report:

EMDB validation analysis : 0.0.1.dev112
MolProbity : 4.02b-467
Percentile statistics : 20231227.v01 (using entries in the PDB archive December 27th 2023)
MapQ : 1.9.13
Ideal geometry (proteins) : Engh & Huber (2001)
Ideal geometry (DNA, RNA) : Parkinson et al. (1996)
Validation Pipeline (wwPDB-VP) : 2.38.3

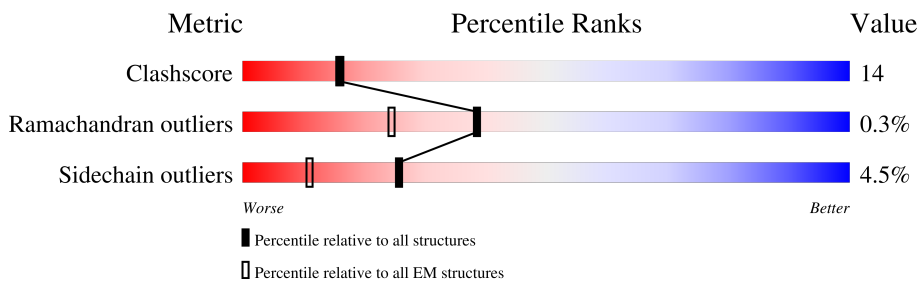
1 Overall quality at a glance i

The following experimental techniques were used to determine the structure:

ELECTRON MICROSCOPY

The reported resolution of this entry is 4.05 Å.

Percentile scores (ranging between 0-100) for global validation metrics of the entry are shown in the following graphic. The table shows the number of entries on which the scores are based.



Metric	Whole archive (#Entries)	EM structures (#Entries)
Clashscore	210492	15764
Ramachandran outliers	207382	16835
Sidechain outliers	206894	16415

The table below summarises the geometric issues observed across the polymeric chains and their fit to the map. The red, orange, yellow and green segments of the bar indicate the fraction of residues that contain outliers for ≥ 3 , 2, 1 and 0 types of geometric quality criteria respectively. A grey segment represents the fraction of residues that are not modelled. The numeric value for each fraction is indicated below the corresponding segment, with a dot representing fractions $\leq 5\%$. The upper red bar (where present) indicates the fraction of residues that have poor fit to the EM map (all-atom inclusion $< 40\%$). The numeric value is given above the bar.

Mol	Chain	Length	Quality of chain
1	A	819	
1	C	819	
2	B	815	
2	D	815	
3	H	211	
3	J	211	
4	K	215	
4	L	215	

2 Entry composition [i](#)

There are 4 unique types of molecules in this entry. The entry contains 28618 atoms, of which 0 are hydrogens and 0 are deuteriums.

In the tables below, the AltConf column contains the number of residues with at least one atom in alternate conformation and the Trace column contains the number of residues modelled with at most 2 atoms.

- Molecule 1 is a protein called Glutamate receptor ionotropic, NMDA 1.

Mol	Chain	Residues	Atoms					AltConf	Trace
			Total	C	N	O	S		
1	A	802	6048	3869	1054	1097	28	0	0
1	C	802	5777	3691	1020	1038	28	0	0

There are 10 discrepancies between the modelled and reference sequences:

Chain	Residue	Modelled	Actual	Comment	Reference
A	556	ASN	GLN	conflict	UNP Q05586
A	819	ILE	LEU	conflict	UNP Q05586
A	839	SER	-	expression tag	UNP Q05586
A	840	ARG	-	expression tag	UNP Q05586
A	841	ALA	-	expression tag	UNP Q05586
C	556	ASN	GLN	conflict	UNP Q05586
C	819	ILE	LEU	conflict	UNP Q05586
C	839	SER	-	expression tag	UNP Q05586
C	840	ARG	-	expression tag	UNP Q05586
C	841	ALA	-	expression tag	UNP Q05586

- Molecule 2 is a protein called Glutamate receptor ionotropic, NMDA 2B.

Mol	Chain	Residues	Atoms					AltConf	Trace
			Total	C	N	O	S		
2	B	787	5636	3626	937	1041	32	0	0
2	D	784	5146	3284	882	957	23	0	0

There are 8 discrepancies between the modelled and reference sequences:

Chain	Residue	Modelled	Actual	Comment	Reference
B	348	ASP	ASN	conflict	UNP Q13224
B	354	GLU	ASP	conflict	UNP Q13224
B	437	GLU	GLN	conflict	UNP Q13224

Continued on next page...

Continued from previous page...

Chain	Residue	Modelled	Actual	Comment	Reference
B	838	SER	CYS	conflict	UNP Q13224
D	348	ASP	ASN	conflict	UNP Q13224
D	354	GLU	ASP	conflict	UNP Q13224
D	437	GLU	GLN	conflict	UNP Q13224
D	838	SER	CYS	conflict	UNP Q13224

- Molecule 3 is a protein called 007-168 Heavy.

Mol	Chain	Residues	Atoms					AltConf	Trace
			Total	C	N	O	S		
3	H	211	1507	959	250	292	6	0	0
3	J	210	1450	924	240	282	4	0	0

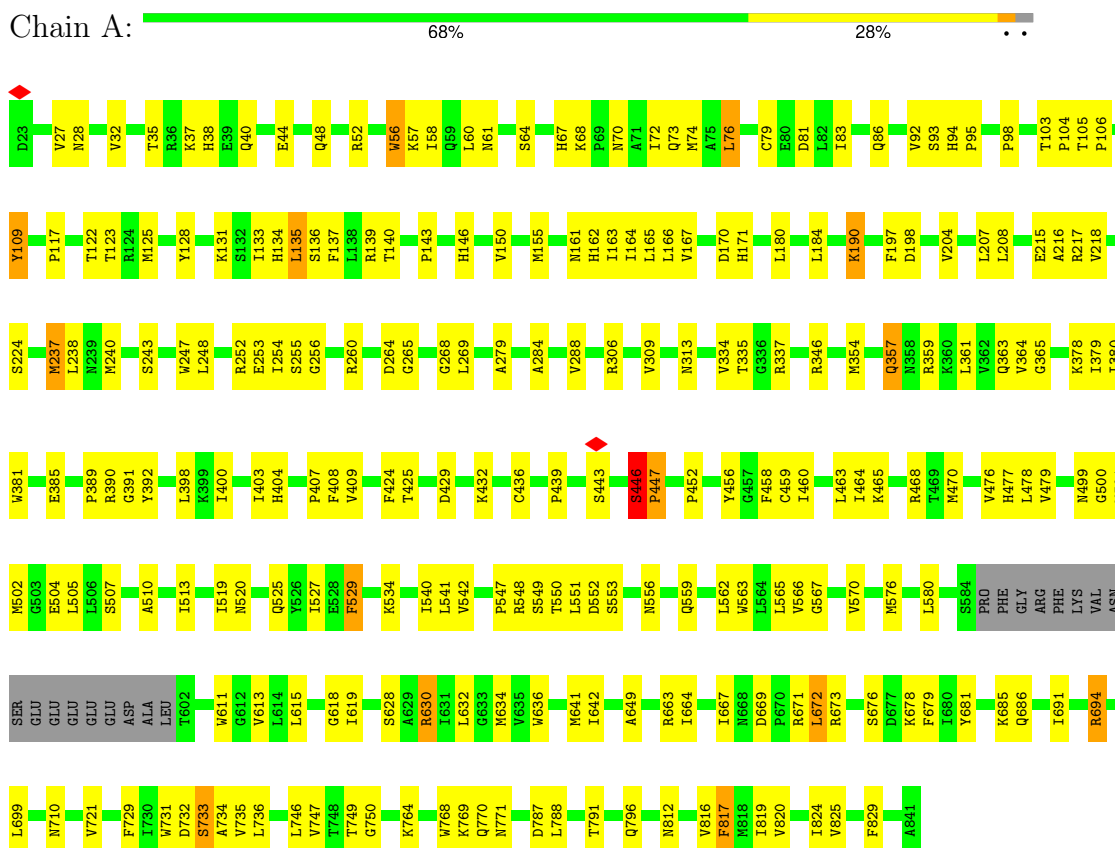
- Molecule 4 is a protein called 007-168 Light.

Mol	Chain	Residues	Atoms					AltConf	Trace
			Total	C	N	O	S		
4	K	215	1511	940	264	303	4	0	0
4	L	215	1543	960	265	313	5	0	0

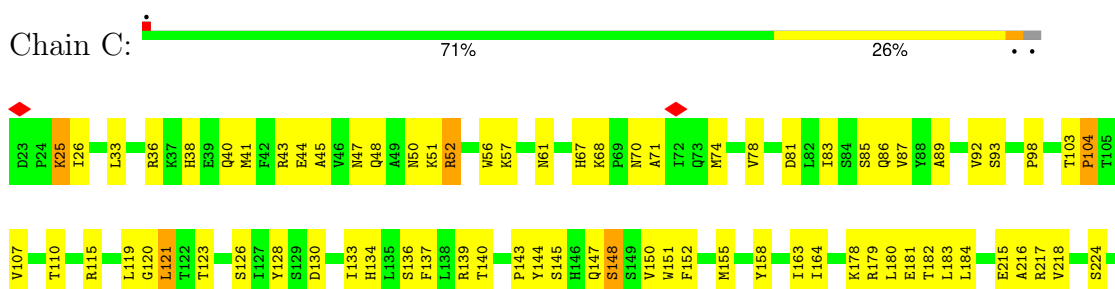
3 Residue-property plots

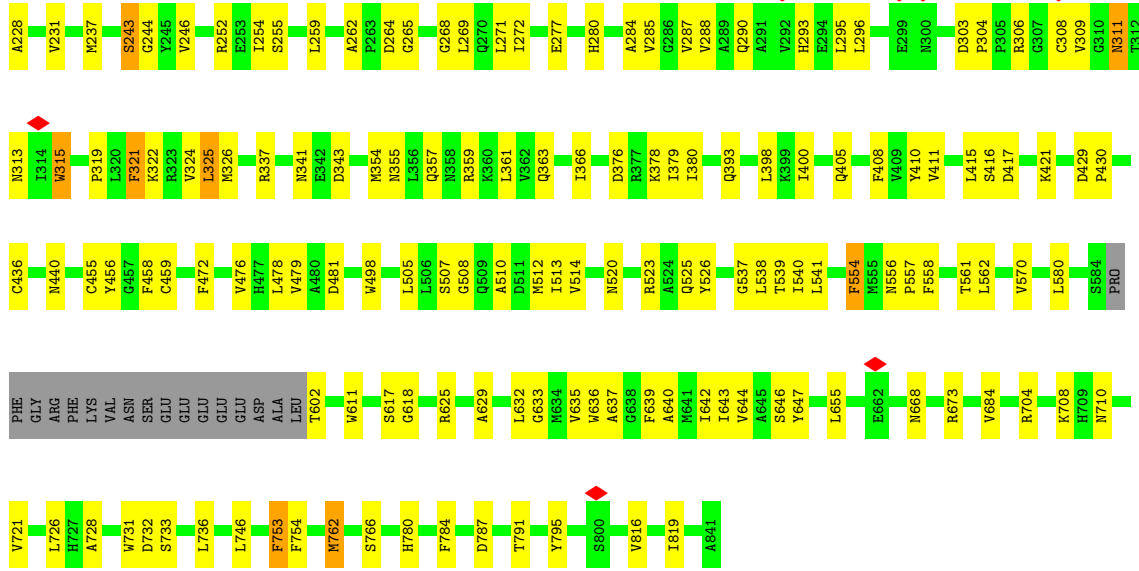
These plots are drawn for all protein, RNA, DNA and oligosaccharide chains in the entry. The first graphic for a chain summarises the proportions of the various outlier classes displayed in the second graphic. The second graphic shows the sequence view annotated by issues in geometry and atom inclusion in map density. Residues are color-coded according to the number of geometric quality criteria for which they contain at least one outlier: green = 0, yellow = 1, orange = 2 and red = 3 or more. A red diamond above a residue indicates a poor fit to the EM map for this residue (all-atom inclusion < 40%). Stretches of 2 or more consecutive residues without any outlier are shown as a green connector. Residues present in the sample, but not in the model, are shown in grey.

- Molecule 1: Glutamate receptor ionotropic, NMDA 1

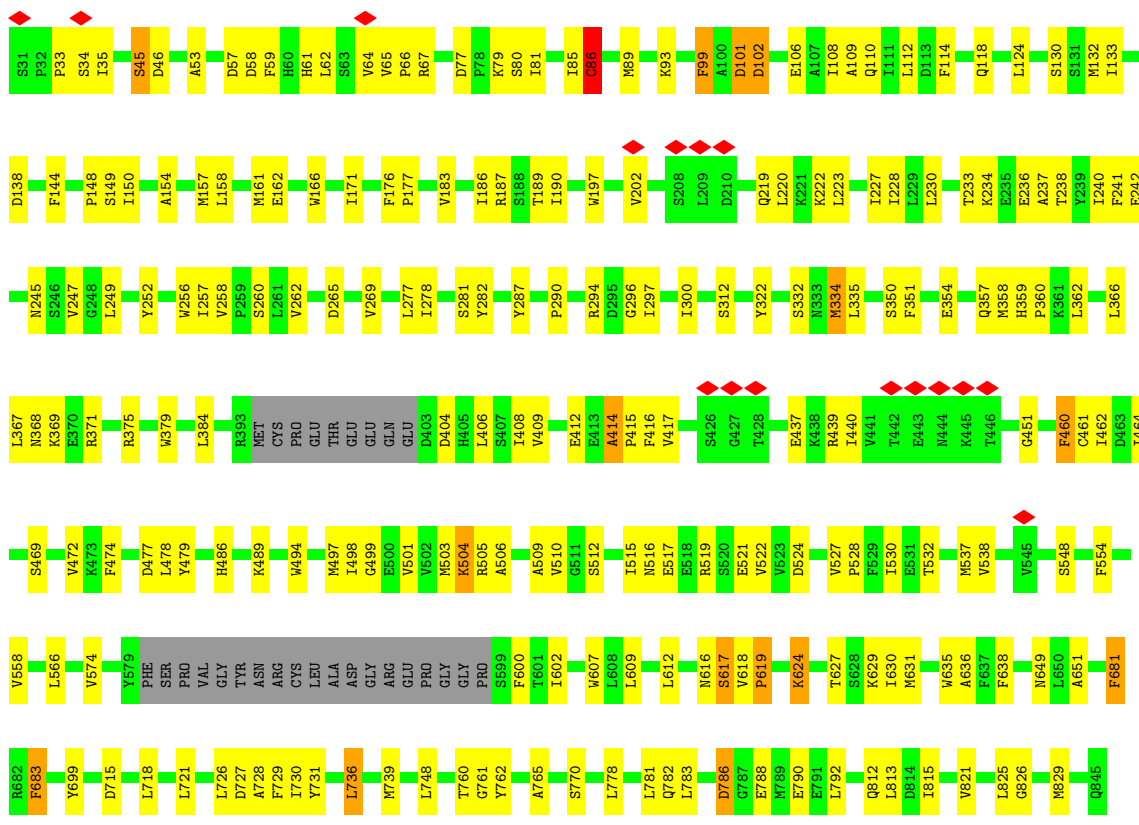


- Molecule 1: Glutamate receptor ionotropic, NMDA 1

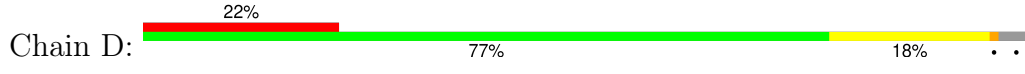


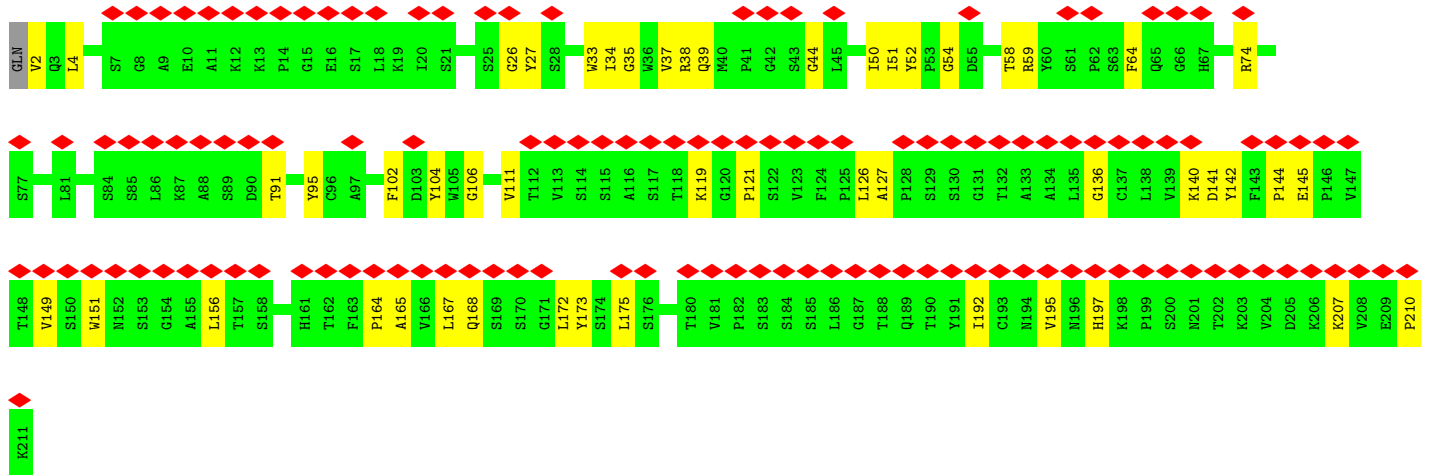


• Molecule 2: Glutamate receptor ionotropic, NMDA 2B

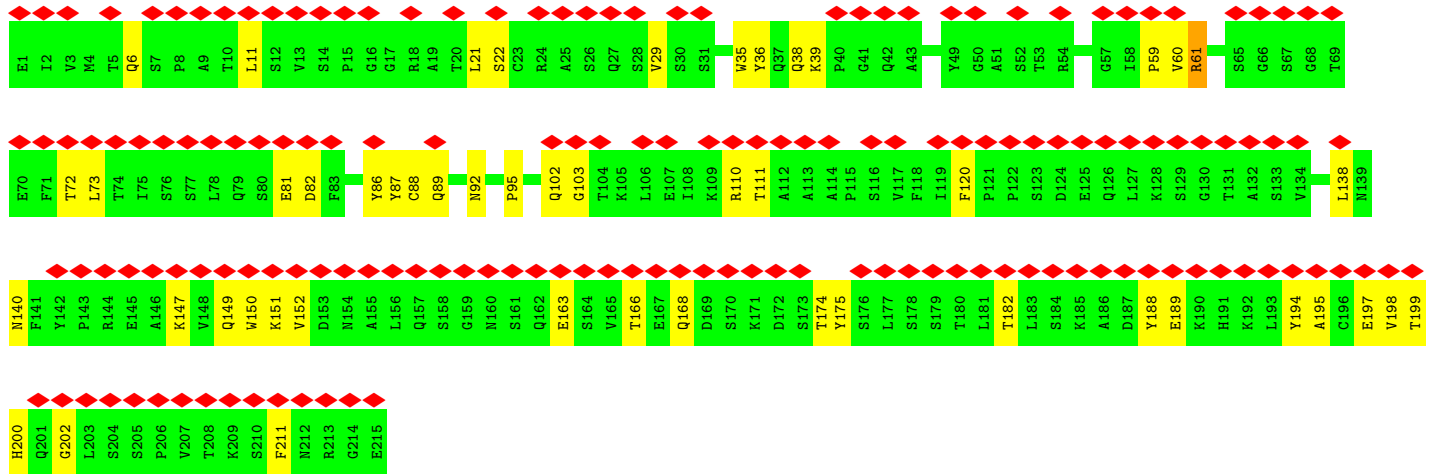
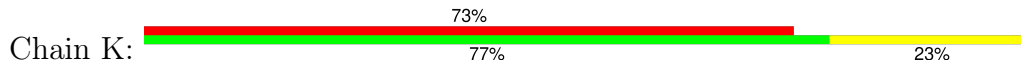


• Molecule 2: Glutamate receptor ionotropic, NMDA 2B

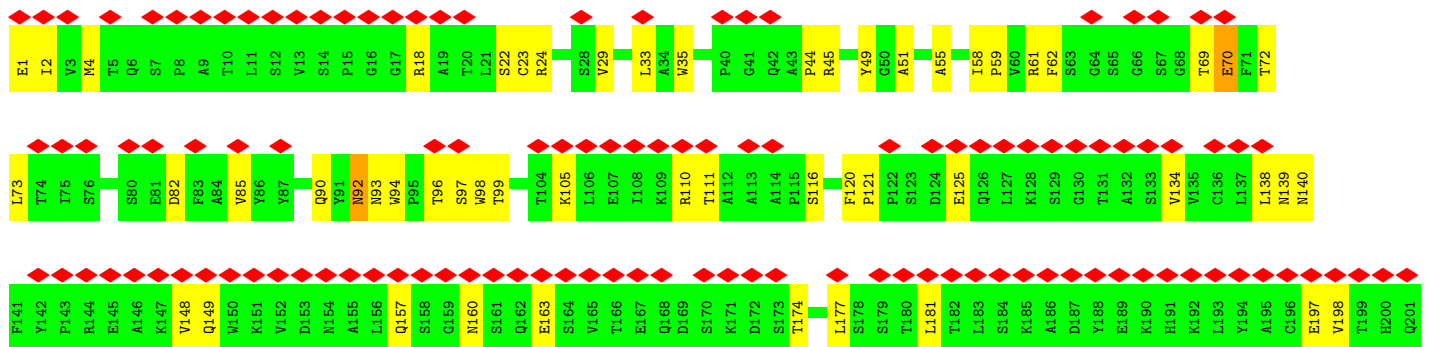
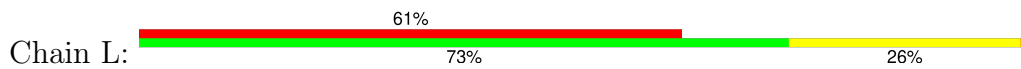




• Molecule 4: 007-168 Light



• Molecule 4: 007-168 Light



G202	L203	S204	S205	P206	V207	T208	K209	S210	F211	N212	R213	G214	E215
------	------	------	------	------	------	------	------	------	------	------	------	------	------

4 Experimental information

Property	Value	Source
EM reconstruction method	SINGLE PARTICLE	Depositor
Imposed symmetry	POINT, Not provided	
Number of particles used	270651	Depositor
Resolution determination method	FSC 0.143 CUT-OFF	Depositor
CTF correction method	NONE	Depositor
Microscope	FEI TITAN KRIOS	Depositor
Voltage (kV)	300	Depositor
Electron dose ($e^-/\text{\AA}^2$)	60	Depositor
Minimum defocus (nm)	800	Depositor
Maximum defocus (nm)	2200	Depositor
Magnification	Not provided	
Image detector	GATAN K3 (6k x 4k)	Depositor
Maximum map value	0.774	Depositor
Minimum map value	-0.445	Depositor
Average map value	0.001	Depositor
Map value standard deviation	0.014	Depositor
Recommended contour level	0.0599	Depositor
Map size (\AA)	368.08002, 368.08002, 368.08002	wwPDB
Map dimensions	430, 430, 430	wwPDB
Map angles ($^\circ$)	90.0, 90.0, 90.0	wwPDB
Pixel spacing (\AA)	0.85600007, 0.85600007, 0.85600007	Depositor

5 Model quality i

5.1 Standard geometry i

The Z score for a bond length (or angle) is the number of standard deviations the observed value is removed from the expected value. A bond length (or angle) with $|Z| > 5$ is considered an outlier worth inspection. RMSZ is the root-mean-square of all Z scores of the bond lengths (or angles).

Mol	Chain	Bond lengths		Bond angles	
		RMSZ	# Z >5	RMSZ	# Z >5
1	A	0.52	6/6185 (0.1%)	0.72	8/8416 (0.1%)
1	C	0.27	0/5908	0.52	2/8070 (0.0%)
2	B	0.28	1/5756 (0.0%)	0.50	1/7858 (0.0%)
2	D	0.98	3/5246 (0.1%)	0.67	5/7196 (0.1%)
3	H	0.27	0/1549	0.51	0/2124
3	J	0.25	0/1491	0.47	0/2053
4	K	0.26	0/1545	0.50	0/2117
4	L	0.24	0/1578	0.49	0/2159
All	All	0.52	10/29258 (0.0%)	0.59	16/39993 (0.0%)

Chiral center outliers are detected by calculating the chiral volume of a chiral center and verifying if the center is modelled as a planar moiety or with the opposite hand. A planarity outlier is detected by checking planarity of atoms in a peptide group, atoms in a mainchain group or atoms of a sidechain that are expected to be planar.

Mol	Chain	#Chirality outliers	#Planarity outliers
3	H	0	1

All (10) bond length outliers are listed below:

Mol	Chain	Res	Type	Atoms	Z	Observed(Å)	Ideal(Å)
2	D	547	PRO	N-CD	67.05	2.41	1.47
1	A	446	SER	C-N	19.51	1.71	1.34
1	A	447	PRO	CB-CG	18.74	2.43	1.50
1	A	447	PRO	CG-CD	-16.78	0.95	1.50
2	D	546	SER	C-N	9.24	1.51	1.34
1	A	447	PRO	N-CA	-9.07	1.31	1.47
2	D	565	MET	CG-SD	-8.30	1.59	1.81
1	A	817	PHE	CG-CD1	-7.22	1.27	1.38
2	B	86	CYS	CB-SG	6.10	1.92	1.82
1	A	817	PHE	CE1-CZ	-5.62	1.26	1.37

All (16) bond angle outliers are listed below:

Mol	Chain	Res	Type	Atoms	Z	Observed(°)	Ideal(°)
2	D	547	PRO	CA-N-CD	-31.15	67.89	111.50
1	A	447	PRO	CB-CG-CD	-27.30	0.03	106.50
1	A	447	PRO	CA-N-CD	-21.91	80.83	111.50
1	A	446	SER	C-N-CD	21.02	172.54	128.40
2	D	547	PRO	N-CD-CG	-19.58	73.84	103.20
2	D	546	SER	C-N-CD	16.59	163.25	128.40
1	A	447	PRO	CA-CB-CG	-14.23	76.96	104.00
1	C	104	PRO	CA-N-CD	-9.12	98.72	111.50
1	A	447	PRO	N-CD-CG	-7.59	91.81	103.20
2	B	619	PRO	CA-N-CD	-5.98	103.13	111.50
1	A	817	PHE	CB-CG-CD2	5.77	124.84	120.80
1	C	103	THR	C-N-CD	5.59	140.15	128.40
1	A	447	PRO	N-CA-CB	-5.59	96.45	102.60
2	D	289	LEU	CA-CB-CG	5.26	127.39	115.30
1	A	446	SER	C-N-CA	-5.15	100.37	122.00
2	D	158	LEU	CA-CB-CG	5.05	126.91	115.30

There are no chirality outliers.

All (1) planarity outliers are listed below:

Mol	Chain	Res	Type	Group
3	H	101	VAL	Peptide

5.2 Too-close contacts

In the following table, the Non-H and H(model) columns list the number of non-hydrogen atoms and hydrogen atoms in the chain respectively. The H(added) column lists the number of hydrogen atoms added and optimized by MolProbity. The Clashes column lists the number of clashes within the asymmetric unit, whereas Symm-Clashes lists symmetry-related clashes.

Mol	Chain	Non-H	H(model)	H(added)	Clashes	Symm-Clashes
1	A	6048	0	5846	200	0
1	C	5777	0	5351	171	0
2	B	5636	0	5158	185	0
2	D	5146	0	4276	97	0
3	H	1507	0	1371	51	0
3	J	1450	0	1257	29	0
4	K	1511	0	1301	39	0
4	L	1543	0	1362	35	0
All	All	28618	0	25922	775	0

The all-atom clashscore is defined as the number of clashes found per 1000 atoms (including

hydrogen atoms). The all-atom clashscore for this structure is 14.

All (775) close contacts within the same asymmetric unit are listed below, sorted by their clash magnitude.

Atom-1	Atom-2	Interatomic distance (Å)	Clash overlap (Å)
1:A:446:SER:C	1:A:447:PRO:N	1.71	1.41
2:D:547:PRO:C	2:D:547:PRO:CD	2.05	1.17
1:A:576:MET:HE1	1:A:632:LEU:HD22	1.31	1.12
1:A:576:MET:CE	1:A:632:LEU:HD22	1.83	1.09
4:K:147:LYS:HZ1	4:K:149:GLN:HB2	1.20	1.02
1:A:580:LEU:HD23	1:A:580:LEU:O	1.62	1.00
2:D:547:PRO:C	2:D:547:PRO:HD2	1.80	0.99
3:H:196:ASN:HB2	3:H:203:LYS:HZ3	1.25	0.98
1:A:105:THR:O	1:A:109:TYR:HB2	1.63	0.98
1:A:446:SER:C	1:A:447:PRO:CA	2.34	0.96
1:C:181:GLU:HA	1:C:184:LEU:HD21	1.49	0.94
3:H:138:LEU:HG	3:H:140:LYS:HE3	1.52	0.90
2:D:547:PRO:CD	2:D:547:PRO:O	2.21	0.88
1:A:443:SER:O	1:A:447:PRO:HG3	1.76	0.86
1:A:68:LYS:HE2	1:A:73:GLN:HG3	1.55	0.85
2:D:185:LYS:O	2:D:189:THR:HG22	1.76	0.85
1:C:144:TYR:HB3	1:C:147:GLN:HE21	1.43	0.84
4:K:147:LYS:NZ	4:K:149:GLN:HB2	1.93	0.84
1:A:56:TRP:CZ3	1:A:57:LYS:HB2	2.13	0.83
1:C:144:TYR:CB	1:C:147:GLN:HE21	1.92	0.83
2:B:790:GLU:OE1	2:B:790:GLU:N	2.11	0.82
1:C:144:TYR:HA	1:C:147:GLN:HG2	1.59	0.82
1:C:181:GLU:HA	1:C:184:LEU:CD2	2.10	0.82
1:A:576:MET:CE	1:A:632:LEU:CD2	2.59	0.81
1:A:580:LEU:HD21	1:A:628:SER:HB3	1.64	0.80
2:D:565:MET:HA	2:D:568:ILE:HG12	1.63	0.80
2:B:813:LEU:HD12	2:B:813:LEU:O	1.84	0.78
1:C:512:MET:HG2	1:C:762:MET:HE2	1.66	0.77
1:A:580:LEU:HD11	1:A:628:SER:OG	1.83	0.77
1:A:109:TYR:HE2	2:B:114:PHE:HB2	1.48	0.77
4:K:39:LYS:HD3	4:K:39:LYS:N	1.99	0.76
1:C:150:VAL:HG11	1:C:269:LEU:HD11	1.68	0.75
4:K:38:GLN:C	4:K:39:LYS:HD3	2.07	0.75
1:C:71:ALA:HA	1:C:74:MET:HG2	1.67	0.75
1:A:505:LEU:HB2	1:A:513:ILE:HD11	1.69	0.75
2:D:148:PRO:HG3	2:D:362:LEU:HD11	1.69	0.74
1:A:256:GLY:O	1:A:260:ARG:NH1	2.21	0.73
1:C:38:HIS:HA	1:C:41:MET:SD	2.29	0.73

Continued on next page...

Continued from previous page...

Atom-1	Atom-2	Interatomic distance (Å)	Clash overlap (Å)
1:A:284:ALA:O	1:A:288:VAL:HG12	1.88	0.73
1:C:505:LEU:HA	1:C:510:ALA:HB3	1.71	0.73
1:A:354:MET:CE	1:A:361:LEU:HB3	2.19	0.72
1:C:731:TRP:HB3	1:C:736:LEU:HD21	1.71	0.72
2:B:108:ILE:O	2:B:112:LEU:HD22	1.89	0.72
3:H:196:ASN:HB2	3:H:203:LYS:NZ	2.05	0.71
1:C:181:GLU:O	1:C:184:LEU:HG	1.91	0.71
1:A:109:TYR:OH	2:B:110:GLN:O	2.09	0.71
1:A:502:MET:CE	1:A:527:ILE:HD11	2.20	0.71
2:D:84:ARG:O	2:D:88:LEU:HD13	1.91	0.71
2:B:501:VAL:HG21	2:B:509:ALA:HB2	1.73	0.71
1:A:197:PHE:HB3	1:A:207:LEU:HD21	1.71	0.71
1:A:56:TRP:CZ3	1:A:57:LYS:HD3	2.26	0.70
1:A:576:MET:HE3	1:A:632:LEU:CD2	2.21	0.70
2:B:109:ALA:HA	2:B:112:LEU:HD23	1.72	0.70
1:A:570:VAL:HG23	1:A:636:TRP:CZ2	2.26	0.70
4:K:6:GLN:H	4:K:102:GLN:HE22	1.40	0.70
1:C:36:ARG:O	1:C:36:ARG:NH1	2.25	0.70
1:C:479:VAL:HG22	1:C:481:ASP:H	1.56	0.70
1:C:309:VAL:HG12	2:D:79:LYS:HG2	1.74	0.69
1:C:343:ASP:OD1	1:C:343:ASP:O	2.10	0.69
1:C:123:THR:OG1	1:C:139:ARG:NH1	2.25	0.69
1:C:561:THR:OG1	2:D:815:ILE:HD11	1.93	0.69
2:D:441:VAL:HA	2:D:450:PRO:HA	1.74	0.69
4:K:197:GLU:OE2	4:K:199:THR:OG1	2.09	0.69
1:C:144:TYR:CD1	1:C:147:GLN:NE2	2.61	0.69
1:A:109:TYR:CE2	2:B:114:PHE:HB2	2.28	0.68
2:B:334:MET:SD	2:B:334:MET:N	2.66	0.68
2:B:166:TRP:HB3	2:B:227:ILE:HD11	1.76	0.68
1:A:309:VAL:HG12	2:B:79:LYS:HE2	1.75	0.68
2:B:537:MET:HB3	2:B:729:PHE:HB3	1.76	0.68
2:B:183:VAL:O	2:B:186:ILE:HG22	1.94	0.68
1:A:109:TYR:CE1	2:B:110:GLN:HB3	2.28	0.68
2:D:406:LEU:HD21	2:D:474:PHE:HD2	1.60	0.67
2:B:269:VAL:HG23	2:B:269:VAL:O	1.92	0.67
4:K:163:GLU:N	4:K:163:GLU:OE1	2.28	0.67
1:A:56:TRP:CE3	1:A:57:LYS:HB2	2.29	0.67
4:L:33:LEU:HB2	4:L:51:ALA:HB2	1.77	0.66
1:C:144:TYR:CG	1:C:147:GLN:NE2	2.63	0.66
3:H:196:ASN:CB	3:H:203:LYS:HZ3	2.02	0.66
1:A:553:SER:HB3	1:A:812:ASN:HB2	1.78	0.66

Continued on next page...

Continued from previous page...

Atom-1	Atom-2	Interatomic distance (Å)	Clash overlap (Å)
2:D:547:PRO:CD	2:D:547:PRO:N	2.41	0.66
1:C:512:MET:HG2	1:C:762:MET:CE	2.26	0.66
3:H:48:ILE:HG23	3:H:64:PHE:HE2	1.61	0.66
1:A:260:ARG:O	1:A:359:ARG:NH2	2.27	0.66
2:B:223:LEU:HD13	2:B:228:ILE:HD11	1.76	0.66
1:C:415:LEU:O	1:C:417:ASP:N	2.29	0.65
1:A:479:VAL:HG11	1:A:501:MET:HG2	1.79	0.65
1:C:180:LEU:O	1:C:184:LEU:HD23	1.96	0.65
1:C:284:ALA:O	1:C:288:VAL:HG12	1.97	0.65
1:A:254:ILE:HD11	1:A:268:GLY:HA3	1.78	0.65
1:A:409:VAL:HG23	1:A:409:VAL:O	1.97	0.65
2:D:515:ILE:O	2:D:517:GLU:N	2.30	0.65
3:H:97:ALA:HB1	3:H:102:PHE:CD2	2.32	0.64
2:B:503:MET:HE3	2:B:503:MET:HA	1.80	0.64
1:A:731:TRP:HB3	1:A:736:LEU:HD21	1.78	0.64
2:D:554:PHE:O	2:D:559:TRP:NE1	2.31	0.64
1:C:74:MET:SD	1:C:74:MET:N	2.71	0.64
4:K:149:GLN:NE2	4:K:150:TRP:O	2.31	0.64
3:H:28:SER:HG	3:H:31:THR:HG1	1.46	0.63
3:H:103:ASP:O	4:L:45:ARG:NH2	2.31	0.63
1:A:398:LEU:HD21	1:A:768:TRP:HE1	1.62	0.63
1:A:642:ILE:HG21	2:B:821:VAL:HG11	1.79	0.63
2:B:183:VAL:HA	2:B:186:ILE:HG22	1.80	0.63
2:B:527:VAL:HG11	2:B:781:LEU:HD21	1.81	0.63
1:A:28:ASN:HB3	1:A:61:ASN:HB3	1.80	0.63
2:B:515:ILE:O	2:B:760:THR:OG1	2.15	0.63
2:D:521:GLU:N	2:D:521:GLU:OE1	2.32	0.63
3:J:144:PRO:O	3:J:197:HIS:NE2	2.29	0.63
4:K:36:TYR:HB2	4:K:89:GLN:HE22	1.63	0.63
4:K:60:VAL:O	4:K:60:VAL:HG22	1.99	0.63
2:B:241:PHE:O	2:B:245:ASN:ND2	2.32	0.62
1:A:68:LYS:HZ1	1:A:74:MET:N	1.96	0.62
1:A:72:ILE:HD11	2:B:118:GLN:HG2	1.81	0.62
2:B:815:ILE:HD12	2:B:815:ILE:H	1.62	0.62
2:B:509:ALA:HB3	2:B:765:ALA:HB3	1.80	0.62
1:C:668:ASN:OD1	1:C:673:ARG:NH2	2.33	0.62
1:C:119:LEU:HD12	1:C:120:GLY:N	2.14	0.62
1:C:558:PHE:CE2	1:C:562:LEU:HB3	2.35	0.62
1:A:140:THR:O	1:A:346:ARG:NH1	2.33	0.62
3:H:119:LYS:NZ	3:H:172:LEU:HD11	2.15	0.62
2:B:33:PRO:HG2	2:B:67:ARG:HH22	1.63	0.61

Continued on next page...

Continued from previous page...

Atom-1	Atom-2	Interatomic distance (Å)	Clash overlap (Å)
3:H:163:PHE:CE2	3:H:176:SER:HB2	2.34	0.61
2:B:408:ILE:HD13	2:B:465:LEU:HD11	1.81	0.61
1:C:264:ASP:OD1	1:C:265:GLY:N	2.33	0.61
2:D:126:ILE:O	2:D:292:ARG:NH1	2.33	0.61
2:D:155:SER:O	2:D:158:LEU:HD12	1.99	0.61
1:C:178:LYS:O	1:C:182:THR:HG22	2.00	0.61
1:C:56:TRP:CZ3	1:C:57:LYS:HB2	2.35	0.61
2:B:59:PHE:O	2:B:59:PHE:CD1	2.54	0.61
2:B:236:GLU:O	2:B:240:ILE:HG12	2.01	0.61
2:B:501:VAL:HA	2:B:506:ALA:HB3	1.81	0.61
2:D:154:ALA:O	2:D:158:LEU:HG	2.00	0.61
2:B:574:VAL:HG21	2:B:602:ILE:HA	1.82	0.61
1:C:255:SER:HA	1:C:259:LEU:HD23	1.83	0.61
1:A:105:THR:HG23	1:A:106:PRO:HD3	1.83	0.60
2:B:59:PHE:HZ	2:B:65:VAL:HA	1.65	0.60
1:A:57:LYS:HB3	1:A:58:ILE:HD12	1.82	0.60
1:A:68:LYS:NZ	1:A:73:GLN:HB3	2.16	0.60
1:C:128:TYR:HB2	1:C:139:ARG:HH22	1.67	0.60
3:J:51:ILE:HB	3:J:58:THR:HG23	1.83	0.60
2:B:133:ILE:HG21	2:B:149:SER:HB3	1.83	0.60
2:B:45:SER:OG	2:B:46:ASP:N	2.34	0.60
1:C:540:ILE:HD11	1:C:728:ALA:HB1	1.81	0.60
1:A:817:PHE:HA	1:A:820:VAL:HG12	1.82	0.60
1:A:253:GLU:N	1:A:253:GLU:OE1	2.34	0.60
2:D:155:SER:HA	2:D:158:LEU:HD11	1.83	0.60
2:B:465:LEU:HD12	2:B:510:VAL:HG21	1.84	0.59
1:C:538:LEU:HB2	1:C:753:PHE:CE1	2.37	0.59
1:A:139:ARG:HH12	1:A:143:PRO:HB3	1.67	0.59
1:A:685:LYS:HG2	1:A:710:ASN:HB3	1.85	0.59
1:C:45:ALA:HB1	1:C:285:VAL:HG21	1.83	0.59
1:C:721:VAL:HG22	1:C:726:LEU:O	2.02	0.59
2:D:547:PRO:HD2	2:D:548:SER:N	2.15	0.59
2:B:486:HIS:NE2	2:B:512:SER:O	2.35	0.59
1:A:502:MET:HE2	1:A:527:ILE:HD11	1.83	0.59
1:A:109:TYR:HE1	2:B:110:GLN:HB3	1.64	0.59
4:L:85:VAL:HA	4:L:105:LYS:HA	1.83	0.59
2:B:278:ILE:HG13	2:B:366:LEU:HD13	1.82	0.59
4:L:29:VAL:HG13	4:L:92:ASN:HB2	1.84	0.59
1:A:83:ILE:O	1:A:306:ARG:NH2	2.36	0.58
1:A:576:MET:HE1	1:A:632:LEU:CD2	2.20	0.58
1:A:163:ILE:HD11	1:A:184:LEU:HD11	1.85	0.58

Continued on next page...

Continued from previous page...

Atom-1	Atom-2	Interatomic distance (Å)	Clash overlap (Å)
1:C:68:LYS:HB3	1:C:74:MET:HE1	1.84	0.58
1:C:293:HIS:HA	1:C:296:LEU:HD23	1.85	0.58
2:D:134:MET:SD	2:D:135:ALA:N	2.76	0.58
3:H:144:PRO:HA	3:H:173:TYR:HE2	1.68	0.58
1:C:410:TYR:HB2	1:C:456:TYR:O	2.02	0.58
2:B:515:ILE:HD12	2:B:528:PRO:HG3	1.84	0.58
1:C:580:LEU:HD22	1:C:629:ALA:HB2	1.84	0.58
3:H:60:TYR:OH	3:H:68:VAL:O	2.17	0.58
1:A:501:MET:HE3	1:A:513:ILE:HG23	1.85	0.58
3:H:119:LYS:HZ3	3:H:172:LEU:HD11	1.67	0.58
1:A:35:THR:O	1:A:38:HIS:N	2.29	0.58
1:C:429:ASP:OD1	1:C:430:PRO:HD2	2.03	0.58
1:C:617:SER:OG	1:C:618:GLY:N	2.36	0.58
2:D:108:ILE:O	2:D:112:LEU:HG	2.03	0.58
2:B:530:ILE:HG22	2:B:762:TYR:HB2	1.86	0.57
2:B:683:PHE:HA	2:B:728:ALA:HB3	1.85	0.57
4:K:151:LYS:HG3	4:K:195:ALA:HB3	1.85	0.57
1:C:224:SER:HA	1:C:252:ARG:HH12	1.69	0.57
2:D:134:MET:SD	2:D:136:ASP:N	2.77	0.57
1:C:405:GLN:HE22	1:C:731:TRP:HZ2	1.53	0.57
1:C:133:ILE:HG23	1:C:134:HIS:ND1	2.20	0.57
2:D:295:ASP:O	2:D:299:ILE:HG13	2.05	0.57
2:B:106:GLU:HA	2:B:132:MET:HE1	1.87	0.57
1:C:311:ASN:OD1	1:C:313:ASN:ND2	2.38	0.57
3:H:121:PRO:HD2	3:H:202:THR:HG21	1.87	0.57
2:D:527:VAL:HG11	2:D:781:LEU:HD21	1.86	0.57
3:J:54:GLY:O	3:J:74:ARG:NH1	2.37	0.57
4:L:44:PRO:O	4:L:45:ARG:NH1	2.37	0.57
1:C:541:LEU:HD21	1:C:746:LEU:HD12	1.86	0.57
1:A:255:SER:OG	1:A:256:GLY:N	2.37	0.56
2:D:526:SER:OG	2:D:527:VAL:N	2.38	0.56
2:B:607:TRP:HZ2	2:B:618:VAL:HG21	1.69	0.56
1:C:363:GLN:HE21	1:C:366:ILE:HG23	1.69	0.56
1:A:567:GLY:O	1:A:570:VAL:HG12	2.05	0.56
2:B:59:PHE:O	2:B:59:PHE:HD1	1.87	0.56
2:D:523:VAL:HG11	2:D:765:ALA:HB1	1.87	0.56
3:H:4:LEU:HD23	3:H:105:TRP:HA	1.87	0.56
2:B:220:LEU:HB3	2:B:249:LEU:HD11	1.87	0.56
2:B:826:GLY:HA2	2:B:829:MET:CE	2.36	0.56
1:C:512:MET:CG	1:C:762:MET:CE	2.83	0.56
2:B:790:GLU:H	2:B:790:GLU:CD	2.04	0.56

Continued on next page...

Continued from previous page...

Atom-1	Atom-2	Interatomic distance (Å)	Clash overlap (Å)
1:A:499:ASN:ND2	1:A:686:GLN:OE1	2.38	0.56
2:B:437:GLU:OE2	2:B:439:ARG:NH2	2.38	0.56
1:C:271:LEU:HD12	1:C:272:ILE:H	1.71	0.56
2:D:47:GLU:O	2:D:51:LYS:HG2	2.04	0.56
1:A:630:ARG:HG3	1:A:634:MET:HE1	1.86	0.56
1:C:144:TYR:O	1:C:147:GLN:HG3	2.06	0.56
1:C:145:SER:HB3	1:C:179:ARG:HD3	1.87	0.56
4:L:94:TRP:HE3	4:L:98:TRP:HE1	1.52	0.56
1:A:446:SER:O	1:A:447:PRO:HA	2.06	0.56
1:A:732:ASP:N	1:A:732:ASP:OD1	2.35	0.56
2:B:498:ILE:HD13	2:B:519:ARG:HG2	1.88	0.56
1:C:795:TYR:O	1:C:795:TYR:CD1	2.59	0.56
1:A:94:HIS:ND1	1:A:95:PRO:O	2.36	0.55
1:A:613:VAL:HG22	2:B:617:SER:OG	2.06	0.55
3:H:138:LEU:CG	3:H:140:LYS:HE3	2.31	0.55
4:L:93:ASN:O	4:L:96:THR:N	2.39	0.55
2:B:234:LYS:NZ	2:B:262:VAL:O	2.39	0.55
1:C:121:LEU:HA	1:C:140:THR:HG22	1.88	0.55
1:C:136:SER:OG	1:C:322:LYS:NZ	2.33	0.55
1:C:520:ASN:HD21	1:C:523:ARG:HD2	1.70	0.55
1:C:287:VAL:HA	1:C:290:GLN:HG2	1.88	0.55
4:L:157:GLN:HB3	4:L:160:ASN:HD21	1.72	0.55
1:C:243:SER:OG	1:C:244:GLY:N	2.40	0.55
1:C:507:SER:OG	1:C:508:GLY:N	2.40	0.55
1:A:541:LEU:HD21	1:A:746:LEU:HD23	1.89	0.55
2:B:102:ASP:OD1	2:B:102:ASP:N	2.36	0.55
2:B:260:SER:HB2	2:B:281:SER:HA	1.88	0.55
2:D:599:SER:O	2:D:599:SER:OG	2.24	0.55
3:H:121:PRO:HB3	3:H:142:TYR:HB3	1.89	0.55
1:C:119:LEU:HD21	1:C:284:ALA:HB1	1.90	0.54
1:A:613:VAL:HA	2:B:617:SER:OG	2.07	0.54
1:A:264:ASP:OD1	1:A:265:GLY:N	2.41	0.54
1:A:164:ILE:HD11	1:A:216:ALA:HB3	1.89	0.54
2:B:619:PRO:HD2	2:B:619:PRO:O	2.07	0.54
1:A:446:SER:C	1:A:447:PRO:HA	2.26	0.54
2:B:149:SER:O	2:B:150:ILE:HD13	2.07	0.54
2:B:477:ASP:OD1	2:B:477:ASP:N	2.40	0.54
1:C:48:GLN:HA	1:C:51:LYS:HD2	1.89	0.54
2:D:467:LYS:HZ1	2:D:792:LEU:HD21	1.72	0.54
3:H:156:LEU:HD21	3:H:179:VAL:HG21	1.88	0.54
3:J:151:TRP:HB3	3:J:156:LEU:HD23	1.89	0.54

Continued on next page...

Continued from previous page...

Atom-1	Atom-2	Interatomic distance (Å)	Clash overlap (Å)
4:K:147:LYS:HB3	4:K:199:THR:HB	1.89	0.54
1:A:133:ILE:O	2:B:110:GLN:NE2	2.40	0.54
1:A:580:LEU:O	1:A:580:LEU:CD2	2.46	0.54
1:C:787:ASP:O	1:C:791:THR:OG1	2.23	0.54
2:B:57:ASP:HB2	2:B:294:ARG:HH12	1.72	0.54
2:B:109:ALA:HB2	2:B:130:SER:HB2	1.89	0.54
4:L:23:CYS:SG	4:L:90:GLN:NE2	2.73	0.54
1:A:667:ILE:O	1:A:673:ARG:NH1	2.42	0.53
2:B:106:GLU:HA	2:B:132:MET:CE	2.38	0.53
1:C:181:GLU:HA	1:C:184:LEU:CG	2.38	0.53
2:D:498:ILE:HG13	2:D:519:ARG:HD3	1.91	0.53
4:L:138:LEU:HB2	4:L:177:LEU:HB3	1.90	0.53
1:A:436:CYS:O	1:A:452:PRO:HA	2.07	0.53
1:A:664:ILE:HD12	1:A:664:ILE:H	1.71	0.53
1:A:829:PHE:N	1:A:829:PHE:CD1	2.75	0.53
2:B:148:PRO:HG3	2:B:362:LEU:HD11	1.91	0.53
2:B:409:VAL:HG22	2:B:479:TYR:CD2	2.44	0.53
2:B:416:PHE:O	2:B:460:PHE:N	2.41	0.53
3:H:186:LEU:HD22	3:H:210:PRO:HG3	1.88	0.53
3:J:33:TRP:HB3	3:J:50:ILE:HD11	1.91	0.53
4:K:140:ASN:HA	4:K:174:THR:HB	1.90	0.53
1:A:549:SER:O	1:A:551:LEU:N	2.41	0.53
1:C:67:HIS:NE2	1:C:93:SER:OG	2.36	0.53
1:C:684:VAL:HG21	1:C:731:TRP:HZ3	1.74	0.53
4:L:55:ALA:H	4:L:58:ILE:HD12	1.74	0.53
1:C:218:VAL:HG12	1:C:246:VAL:HG13	1.90	0.53
4:K:59:PRO:HB2	4:K:61:ARG:HD3	1.91	0.53
1:C:795:TYR:O	1:C:795:TYR:HD1	1.90	0.53
1:A:615:LEU:HD21	2:D:637:PHE:HD2	1.73	0.53
2:B:521:GLU:N	2:B:521:GLU:OE1	2.41	0.53
2:B:786:ASP:OD1	2:B:786:ASP:N	2.36	0.53
1:C:633:GLY:O	1:C:636:TRP:HB3	2.09	0.53
3:H:40:MET:SD	3:H:41:PRO:HD2	2.49	0.53
2:B:101:ASP:OD2	2:B:130:SER:HB3	2.08	0.52
1:C:505:LEU:HD22	1:C:513:ILE:HD11	1.91	0.52
1:A:576:MET:SD	1:A:576:MET:C	2.88	0.52
1:A:334:VAL:HG23	1:A:335:THR:HG23	1.91	0.52
2:D:469:SER:HA	2:D:474:PHE:CE1	2.44	0.52
4:L:49:TYR:HE1	4:L:55:ALA:HA	1.75	0.52
1:A:542:VAL:HG23	1:A:747:VAL:HG13	1.91	0.52
1:C:602:THR:HG21	1:C:625:ARG:HH12	1.74	0.52

Continued on next page...

Continued from previous page...

Atom-1	Atom-2	Interatomic distance (Å)	Clash overlap (Å)
2:D:811:SER:OG	2:D:812:GLN:N	2.41	0.52
3:H:138:LEU:HG	3:H:140:LYS:CE	2.34	0.52
4:K:73:LEU:HD11	4:K:86:TYR:CE2	2.45	0.52
1:A:104:PRO:HG3	1:A:123:THR:HG21	1.91	0.52
4:K:89:GLN:N	4:K:89:GLN:OE1	2.42	0.52
3:J:2:VAL:HA	3:J:26:GLY:HA3	1.91	0.52
3:J:127:ALA:HB1	3:J:210:PRO:HA	1.91	0.52
4:L:140:ASN:HA	4:L:174:THR:HB	1.92	0.52
1:A:363:GLN:NE2	1:A:365:GLY:O	2.43	0.52
1:A:505:LEU:HA	1:A:510:ALA:HB3	1.91	0.52
1:C:83:ILE:O	1:C:306:ARG:NH1	2.43	0.52
2:D:215:LYS:O	2:D:219:GLN:HG2	2.08	0.52
2:D:406:LEU:HD12	2:D:507:TYR:HD2	1.73	0.52
1:C:119:LEU:CD2	1:C:284:ALA:HB1	2.39	0.52
3:J:59:ARG:HD2	4:K:95:PRO:HG2	1.92	0.52
2:B:312:SER:O	2:B:312:SER:OG	2.28	0.52
1:C:81:ASP:O	1:C:85:SER:OG	2.25	0.51
1:C:643:ILE:O	1:C:646:SER:OG	2.22	0.51
2:B:566:LEU:HD11	2:B:609:LEU:HB3	1.91	0.51
2:D:31:SER:O	2:D:33:PRO:HD3	2.10	0.51
3:H:165:ALA:HB2	3:H:175:LEU:HD23	1.91	0.51
1:C:357:GLN:NE2	1:C:380:ILE:HG12	2.26	0.51
4:K:82:ASP:OD1	4:K:82:ASP:N	2.35	0.51
1:A:279:ALA:HB1	1:A:334:VAL:HG21	1.91	0.51
1:A:829:PHE:N	1:A:829:PHE:HD1	2.08	0.51
1:A:134:HIS:C	1:A:135:LEU:HD12	2.31	0.51
1:C:38:HIS:NE2	1:C:277:GLU:OE1	2.44	0.51
4:K:29:VAL:HG23	4:K:92:ASN:HA	1.93	0.51
3:J:91:THR:HA	3:J:111:VAL:O	2.11	0.51
4:K:152:VAL:HG22	4:K:194:TYR:HD2	1.74	0.51
1:C:319:PRO:O	1:C:322:LYS:HB2	2.11	0.51
3:H:67:HIS:ND1	3:H:68:VAL:HG23	2.26	0.51
4:K:188:TYR:O	4:K:194:TYR:OH	2.28	0.51
2:B:130:SER:O	2:B:130:SER:OG	2.28	0.51
1:C:415:LEU:HD13	1:C:421:LYS:HB3	1.92	0.51
1:A:354:MET:SD	1:A:361:LEU:HD22	2.51	0.51
1:A:364:VAL:HG21	1:A:379:ILE:HG23	1.93	0.51
1:A:460:ILE:O	1:A:464:ILE:HG12	2.11	0.51
3:H:124:PHE:HE1	4:L:125:GLU:HG2	1.76	0.51
1:A:443:SER:O	1:A:447:PRO:CG	2.55	0.50
2:B:183:VAL:C	2:B:186:ILE:HG22	2.31	0.50

Continued on next page...

Continued from previous page...

Atom-1	Atom-2	Interatomic distance (Å)	Clash overlap (Å)
1:A:439:PRO:HD2	1:A:478:LEU:HB2	1.92	0.50
2:B:59:PHE:CD1	2:B:62:LEU:HB2	2.46	0.50
1:A:354:MET:HE1	1:A:361:LEU:HB3	1.94	0.50
2:B:183:VAL:O	2:B:186:ILE:CG2	2.57	0.50
2:B:290:PRO:O	2:B:294:ARG:HG2	2.11	0.50
2:B:472:VAL:HG23	2:B:474:PHE:HD2	1.76	0.50
2:D:413:GLU:OE1	2:D:414:ALA:N	2.45	0.50
2:D:678:SER:HB2	2:D:679:PRO:HD3	1.92	0.50
1:A:68:LYS:HZ1	1:A:73:GLN:C	2.14	0.50
1:A:162:HIS:O	1:A:216:ALA:HB1	2.11	0.50
1:A:630:ARG:HG3	1:A:634:MET:CE	2.41	0.50
2:D:615:ASN:OD1	2:D:617:SER:OG	2.24	0.50
4:K:152:VAL:HG22	4:K:194:TYR:CD2	2.46	0.50
2:B:241:PHE:N	2:B:241:PHE:CD2	2.80	0.50
2:B:332:SER:HB3	2:B:335:LEU:HD21	1.93	0.50
3:H:35:GLY:HA2	3:H:50:ILE:HA	1.93	0.50
1:C:26:ILE:HD11	1:C:61:ASN:ND2	2.26	0.50
2:B:462:ILE:HD13	2:B:478:LEU:HD11	1.93	0.50
1:C:70:ASN:OD1	1:C:70:ASN:N	2.43	0.50
3:H:37:VAL:HG13	3:H:95:TYR:HB2	1.94	0.50
3:H:40:MET:HG3	3:H:41:PRO:HD2	1.92	0.50
2:B:154:ALA:HA	2:B:157:MET:HE2	1.93	0.50
2:B:183:VAL:HA	2:B:186:ILE:CG2	2.41	0.50
2:B:269:VAL:HG11	2:B:371:ARG:HB3	1.94	0.50
2:B:715:ASP:O	2:B:718:LEU:HG	2.12	0.50
1:A:68:LYS:HG2	1:A:74:MET:HE1	1.94	0.50
1:A:150:VAL:HG11	1:A:269:LEU:HD21	1.94	0.50
2:B:607:TRP:CZ2	2:B:618:VAL:HG21	2.47	0.50
1:C:224:SER:O	1:C:228:ALA:N	2.43	0.50
3:H:40:MET:CG	3:H:41:PRO:HD2	2.42	0.50
3:J:140:LYS:NZ	4:K:182:THR:OG1	2.42	0.50
1:A:407:PRO:HG2	1:A:735:VAL:HA	1.93	0.49
1:A:672:LEU:HD23	1:A:672:LEU:H	1.76	0.49
4:L:29:VAL:HG11	4:L:90:GLN:HB3	1.94	0.49
1:A:125:MET:HE2	1:A:125:MET:HA	1.94	0.49
2:B:133:ILE:HD13	2:B:149:SER:HA	1.94	0.49
3:H:48:ILE:HG23	3:H:64:PHE:CE2	2.44	0.49
4:L:149:GLN:NE2	4:L:197:GLU:HB3	2.27	0.49
1:A:32:VAL:HG12	1:A:92:VAL:HA	1.93	0.49
1:A:247:TRP:O	1:A:248:LEU:HG	2.11	0.49
2:D:79:LYS:O	2:D:83:THR:HG22	2.11	0.49

Continued on next page...

Continued from previous page...

Atom-1	Atom-2	Interatomic distance (Å)	Clash overlap (Å)
1:C:354:MET:SD	1:C:355:ASN:N	2.85	0.49
2:D:148:PRO:HG2	2:D:153:GLN:HE21	1.78	0.49
2:D:155:SER:HA	2:D:158:LEU:CD1	2.42	0.49
2:B:826:GLY:HA2	2:B:829:MET:HE3	1.94	0.49
3:H:200:SER:OG	3:H:202:THR:OG1	2.27	0.49
1:A:155:MET:HE1	1:A:184:LEU:HD21	1.94	0.49
2:B:183:VAL:CA	2:B:186:ILE:HG22	2.42	0.49
2:B:414:ALA:HB1	2:B:415:PRO:HD2	1.94	0.49
2:D:366:LEU:HD23	2:D:376:VAL:HG22	1.94	0.49
2:B:34:SER:O	2:B:93:LYS:NZ	2.46	0.49
4:K:189:GLU:HA	4:K:189:GLU:OE1	2.12	0.49
2:B:230:LEU:HB2	2:B:258:VAL:HG12	1.94	0.49
1:C:41:MET:SD	1:C:41:MET:N	2.85	0.49
1:C:130:ASP:OD1	1:C:130:ASP:N	2.42	0.49
3:H:38:ARG:NE	3:H:94:TYR:CE1	2.80	0.49
2:B:171:ILE:HD11	2:B:202:VAL:HG22	1.95	0.48
3:J:149:VAL:HG22	3:J:195:VAL:HG22	1.95	0.48
1:A:73:GLN:HA	1:A:76:LEU:CD1	2.43	0.48
2:B:469:SER:HA	2:B:474:PHE:CE2	2.48	0.48
1:C:87:VAL:HG22	1:C:89:ALA:H	1.77	0.48
1:C:363:GLN:NE2	1:C:366:ILE:HG23	2.28	0.48
1:C:538:LEU:HB2	1:C:753:PHE:HE1	1.76	0.48
2:D:137:LYS:HB3	2:D:141:SER:HB3	1.95	0.48
1:A:208:LEU:HD23	1:A:240:MET:SD	2.53	0.48
2:B:731:TYR:HB3	2:B:736:LEU:HD21	1.93	0.48
3:J:165:ALA:HB2	3:J:175:LEU:HD23	1.96	0.48
1:A:224:SER:HA	1:A:252:ARG:NH1	2.28	0.48
2:B:149:SER:C	2:B:150:ILE:HD13	2.33	0.48
1:C:164:ILE:HD11	1:C:216:ALA:HB3	1.94	0.48
1:C:539:THR:OG1	1:C:540:ILE:N	2.45	0.48
3:J:145:GLU:CD	3:J:173:TYR:CE2	2.87	0.48
4:L:35:TRP:CG	4:L:73:LEU:HD11	2.48	0.48
4:L:148:VAL:HG12	4:L:198:VAL:HG13	1.93	0.48
1:A:425:THR:OG1	1:A:429:ASP:O	2.30	0.48
1:C:25:LYS:H	1:C:25:LYS:HD2	1.79	0.48
1:C:308:CYS:O	2:D:79:LYS:HB3	2.14	0.48
1:C:322:LYS:HA	1:C:325:LEU:HD11	1.95	0.48
2:D:93:LYS:NZ	2:D:95:GLN:OE1	2.44	0.48
4:L:149:GLN:OE1	4:L:149:GLN:N	2.45	0.48
1:A:816:VAL:O	1:A:819:ILE:HG22	2.13	0.48
2:B:494:TRP:HE1	2:B:522:VAL:HG11	1.76	0.48

Continued on next page...

Continued from previous page...

Atom-1	Atom-2	Interatomic distance (Å)	Clash overlap (Å)
2:D:539:SER:OG	2:D:540:ARG:N	2.47	0.48
1:A:76:LEU:HD12	1:A:76:LEU:H	1.79	0.48
2:D:522:VAL:HG23	2:D:523:VAL:HG23	1.96	0.48
2:D:631:MET:O	2:D:634:VAL:HG12	2.14	0.48
1:C:354:MET:HE1	1:C:361:LEU:HD22	1.96	0.48
1:C:398:LEU:HD11	1:C:472:PHE:HE2	1.79	0.48
2:D:100:ALA:HB2	2:D:126:ILE:HD11	1.95	0.48
2:B:269:VAL:O	2:B:371:ARG:NH2	2.47	0.48
1:C:57:LYS:HE3	1:C:296:LEU:HD13	1.96	0.48
1:C:78:VAL:HG21	1:C:107:VAL:HG12	1.96	0.48
1:A:58:ILE:HD12	1:A:58:ILE:N	2.28	0.47
2:B:33:PRO:HB3	2:B:64:VAL:HA	1.96	0.47
1:C:400:ILE:HD11	1:C:476:VAL:HG22	1.95	0.47
1:C:632:LEU:O	1:C:635:VAL:HG12	2.14	0.47
3:J:167:LEU:HD13	3:J:173:TYR:HE1	1.78	0.47
1:A:163:ILE:HG22	1:A:218:VAL:HG11	1.96	0.47
1:A:525:GLN:O	1:A:764:LYS:NZ	2.45	0.47
1:A:676:SER:OG	1:A:678:LYS:NZ	2.47	0.47
2:B:59:PHE:CZ	2:B:65:VAL:HA	2.47	0.47
2:B:176:PHE:HD1	2:B:177:PRO:HD2	1.78	0.47
2:D:148:PRO:HG2	2:D:153:GLN:NE2	2.29	0.47
2:D:793:GLU:OE1	2:D:794:ALA:N	2.47	0.47
3:J:4:LEU:HB3	3:J:106:GLY:HA2	1.95	0.47
1:A:217:ARG:HB2	1:A:391:GLY:HA2	1.95	0.47
2:B:649:ASN:HD22	1:C:655:LEU:HD21	1.79	0.47
3:H:54:GLY:O	3:H:74:ARG:NH1	2.40	0.47
1:A:570:VAL:HG11	1:A:611:TRP:CZ3	2.49	0.47
2:B:223:LEU:HD21	2:B:249:LEU:HD13	1.95	0.47
2:B:256:TRP:HB2	2:B:277:LEU:HD22	1.96	0.47
1:C:408:PHE:HB3	1:C:459:CYS:SG	2.54	0.47
1:A:165:LEU:HD11	1:A:180:LEU:HD23	1.97	0.47
1:A:165:LEU:HD22	1:A:167:VAL:HG23	1.96	0.47
2:B:132:MET:SD	2:B:132:MET:N	2.84	0.47
2:B:409:VAL:HG22	2:B:479:TYR:HD2	1.79	0.47
2:B:532:THR:H	2:B:761:GLY:HA2	1.78	0.47
1:C:295:LEU:HD13	1:C:324:VAL:HG21	1.95	0.47
2:D:564:VAL:O	2:D:568:ILE:HG23	2.14	0.47
1:A:56:TRP:O	1:A:56:TRP:HE3	1.97	0.47
1:A:580:LEU:CD2	1:A:628:SER:HB3	2.39	0.47
2:B:516:ASN:OD1	2:B:517:GLU:N	2.47	0.47
1:C:86:GLN:HB2	1:C:304:PRO:HB2	1.96	0.47

Continued on next page...

Continued from previous page...

Atom-1	Atom-2	Interatomic distance (Å)	Clash overlap (Å)
1:C:155:MET:HE1	1:C:163:ILE:CG2	2.44	0.47
1:C:215:GLU:O	1:C:393:GLN:N	2.48	0.47
2:D:514:THR:O	2:D:519:ARG:NH1	2.47	0.47
1:A:190:LYS:HA	1:A:190:LYS:HD3	1.62	0.47
1:A:237:MET:SD	1:A:238:LEU:N	2.88	0.47
2:B:486:HIS:O	2:B:497:MET:N	2.46	0.47
2:B:618:VAL:HG22	2:B:619:PRO:HD2	1.96	0.47
2:B:825:LEU:O	2:B:829:MET:HG3	2.14	0.47
1:C:512:MET:CG	1:C:762:MET:HE2	2.40	0.47
1:A:824:ILE:HG23	2:D:572:VAL:HG11	1.96	0.47
2:B:66:PRO:HG2	2:B:297:ILE:HD11	1.95	0.47
2:B:437:GLU:HG2	2:B:439:ARG:HE	1.79	0.47
1:A:35:THR:HB	1:A:38:HIS:HD1	1.79	0.47
2:B:554:PHE:HD1	2:B:558:VAL:HG11	1.80	0.47
2:B:627:THR:O	2:B:630:ILE:HG22	2.14	0.47
1:C:123:THR:OG1	1:C:123:THR:O	2.32	0.47
1:C:354:MET:CE	1:C:361:LEU:HD22	2.44	0.47
4:K:87:TYR:HA	4:K:103:GLY:HA2	1.97	0.47
1:A:563:TRP:O	1:A:566:VAL:HG12	2.15	0.47
2:B:631:MET:HE2	2:B:631:MET:HA	1.96	0.47
2:D:408:ILE:HG21	2:D:465:LEU:HD21	1.96	0.47
2:B:269:VAL:O	2:B:269:VAL:CG2	2.61	0.46
3:H:73:ASP:OD1	3:H:77:SER:N	2.48	0.46
3:J:126:LEU:HB3	4:K:120:PHE:CG	2.50	0.46
1:A:749:THR:OG1	1:A:750:GLY:N	2.48	0.46
2:B:512:SER:O	2:B:512:SER:OG	2.32	0.46
1:C:505:LEU:HD22	1:C:513:ILE:CG1	2.46	0.46
1:C:512:MET:CG	1:C:762:MET:HE1	2.46	0.46
3:H:123:VAL:HG22	3:H:139:VAL:HG22	1.96	0.46
4:L:121:PRO:HB3	4:L:211:PHE:CE2	2.51	0.46
1:A:70:ASN:HD21	1:A:73:GLN:H	1.64	0.46
2:B:505:ARG:HG2	2:B:505:ARG:O	2.15	0.46
1:C:68:LYS:HB3	1:C:74:MET:CE	2.45	0.46
1:C:570:VAL:HG22	1:C:636:TRP:HZ2	1.80	0.46
3:H:97:ALA:HB1	3:H:102:PHE:CG	2.51	0.46
1:A:446:SER:O	1:A:447:PRO:CA	2.61	0.46
2:B:498:ILE:HG13	2:B:499:GLY:N	2.30	0.46
1:C:303:ASP:O	1:C:315:TRP:NE1	2.40	0.46
2:D:819:ALA:HA	2:D:822:PHE:CD2	2.50	0.46
1:C:541:LEU:O	1:C:728:ALA:HA	2.15	0.46
1:C:644:VAL:O	1:C:647:TYR:HB3	2.16	0.46

Continued on next page...

Continued from previous page...

Atom-1	Atom-2	Interatomic distance (Å)	Clash overlap (Å)
3:H:126:LEU:HB3	4:L:120:PHE:CG	2.51	0.46
2:B:219:GLN:HA	2:B:222:LYS:HE2	1.96	0.46
2:D:79:LYS:HA	2:D:82:ILE:HG12	1.97	0.46
2:B:721:LEU:HA	2:B:726:LEU:HA	1.97	0.46
1:C:562:LEU:HD13	2:D:815:ILE:HG13	1.98	0.46
2:D:501:VAL:HA	2:D:506:ALA:HB3	1.97	0.46
2:D:555:SER:O	2:D:558:VAL:HG12	2.15	0.46
1:A:56:TRP:CE3	1:A:56:TRP:C	2.90	0.46
2:D:559:TRP:O	2:D:562:MET:HG3	2.16	0.46
4:K:110:ARG:HG2	4:K:111:THR:H	1.80	0.46
4:L:22:SER:O	4:L:24:ARG:NH1	2.49	0.46
1:A:409:VAL:O	1:A:409:VAL:CG2	2.63	0.46
2:B:237:ALA:O	2:B:241:PHE:CD2	2.69	0.46
2:B:718:LEU:HD22	2:B:739:MET:CE	2.45	0.46
2:D:108:ILE:O	2:D:111:ILE:HG13	2.16	0.46
3:H:40:MET:HG3	3:H:41:PRO:CD	2.46	0.46
3:J:167:LEU:HD13	3:J:173:TYR:CE1	2.50	0.46
1:C:121:LEU:HD23	1:C:280:HIS:HB3	1.98	0.46
1:C:321:PHE:O	1:C:325:LEU:HG	2.15	0.46
4:K:21:LEU:HG	4:K:73:LEU:HD12	1.98	0.46
1:A:86:GLN:HB3	1:A:306:ARG:HB3	1.98	0.45
1:A:562:LEU:HD12	1:A:565:LEU:HD22	1.98	0.45
1:A:570:VAL:HG23	1:A:636:TRP:HZ2	1.73	0.45
1:C:104:PRO:HG2	1:C:128:TYR:CE2	2.50	0.45
2:D:407:SER:HB2	2:D:479:TYR:HE1	1.81	0.45
2:D:478:LEU:H	2:D:478:LEU:HD12	1.81	0.45
1:A:691:ILE:HD13	1:A:691:ILE:HA	1.88	0.45
1:A:769:LYS:HB3	1:A:770:GLN:H	1.46	0.45
1:C:459:CYS:HB3	1:C:514:VAL:HG22	1.98	0.45
3:J:164:PRO:HD3	4:K:166:THR:HG22	1.97	0.45
4:K:35:TRP:HA	4:K:88:CYS:HA	1.99	0.45
1:A:48:GLN:O	1:A:52:ARG:HG3	2.15	0.45
1:A:354:MET:HE3	1:A:361:LEU:HB3	1.97	0.45
1:A:507:SER:O	1:A:507:SER:OG	2.25	0.45
1:A:663:ARG:HA	1:A:663:ARG:HD3	1.68	0.45
2:B:618:VAL:CG2	2:B:619:PRO:CD	2.94	0.45
1:C:119:LEU:HD21	1:C:284:ALA:CB	2.46	0.45
1:A:500:GLY:O	1:A:504:GLU:HG2	2.16	0.45
1:C:26:ILE:HG13	1:C:61:ASN:OD1	2.16	0.45
1:C:816:VAL:O	1:C:819:ILE:HG22	2.16	0.45
3:H:105:TRP:CD1	3:H:105:TRP:N	2.84	0.45

Continued on next page...

Continued from previous page...

Atom-1	Atom-2	Interatomic distance (Å)	Clash overlap (Å)
4:K:147:LYS:HZ1	4:K:149:GLN:CB	2.10	0.45
1:A:131:LYS:NZ	1:A:137:PHE:HB3	2.32	0.45
2:B:256:TRP:C	2:B:257:ILE:HD13	2.36	0.45
1:C:505:LEU:HD12	1:C:505:LEU:O	2.16	0.45
3:J:172:LEU:C	3:J:173:TYR:HD1	2.19	0.45
4:L:163:GLU:HB2	4:L:177:LEU:HD11	1.99	0.45
1:A:812:ASN:O	1:A:816:VAL:HG23	2.17	0.45
2:B:384:LEU:HD23	2:B:384:LEU:HA	1.79	0.45
1:C:155:MET:HE1	1:C:163:ILE:HG21	1.98	0.45
1:A:733:SER:OG	1:A:734:ALA:N	2.49	0.45
2:B:826:GLY:HA2	2:B:829:MET:HE2	1.99	0.45
1:C:556:ASN:HB3	1:C:557:PRO:HD3	1.98	0.45
4:K:147:LYS:NZ	4:K:149:GLN:CB	2.74	0.45
2:B:242:GLU:HA	2:B:245:ASN:HD21	1.82	0.45
1:C:92:VAL:HB	1:C:107:VAL:HG21	1.97	0.45
2:D:36:GLY:O	2:D:95:GLN:N	2.49	0.45
2:D:280:VAL:HG22	2:D:364:ILE:HG13	1.99	0.45
4:K:194:TYR:HB2	4:K:211:PHE:CE1	2.52	0.45
1:A:400:ILE:HB	1:A:476:VAL:HG12	1.98	0.45
2:D:333:ASN:OD1	2:D:336:ASN:ND2	2.49	0.45
2:D:335:LEU:O	2:D:339:LEU:HG	2.17	0.45
1:A:408:PHE:HB3	1:A:459:CYS:SG	2.56	0.45
2:B:230:LEU:HD21	2:B:256:TRP:HE3	1.82	0.45
2:B:351:PHE:HD1	2:B:357:GLN:HA	1.82	0.45
4:L:22:SER:HB2	4:L:72:THR:HG23	1.99	0.45
4:L:59:PRO:HB2	4:L:61:ARG:HG2	1.99	0.45
1:A:731:TRP:HB3	1:A:736:LEU:CD2	2.47	0.44
2:B:57:ASP:OD1	2:B:58:ASP:N	2.43	0.44
3:H:166:VAL:HG22	3:H:174:SER:O	2.16	0.44
1:A:27:VAL:O	1:A:60:LEU:HA	2.16	0.44
1:A:56:TRP:HZ3	1:A:57:LYS:HD3	1.76	0.44
1:A:576:MET:HE3	1:A:632:LEU:HD21	1.98	0.44
1:A:721:VAL:HG21	1:A:729:PHE:HB2	2.00	0.44
2:B:247:VAL:HG23	2:B:249:LEU:HG	1.99	0.44
1:C:505:LEU:HB2	1:C:513:ILE:HD11	2.00	0.44
4:K:22:SER:HA	4:K:72:THR:HG23	1.99	0.44
2:B:86:CYS:HA	2:B:89:MET:HG2	1.99	0.44
2:B:412:GLU:HA	2:B:417:VAL:HG12	2.00	0.44
2:B:788:GLU:OE1	2:B:788:GLU:N	2.50	0.44
1:C:436:CYS:HB2	1:C:455:CYS:HB2	1.84	0.44
2:D:815:ILE:HG22	2:D:815:ILE:O	2.17	0.44

Continued on next page...

Continued from previous page...

Atom-1	Atom-2	Interatomic distance (Å)	Clash overlap (Å)
2:B:609:LEU:HG	2:B:635:TRP:CD1	2.53	0.44
1:C:144:TYR:O	1:C:147:GLN:CG	2.65	0.44
1:C:262:ALA:O	1:C:359:ARG:NH1	2.49	0.44
2:D:440:ILE:O	2:D:451:GLY:N	2.44	0.44
1:A:94:HIS:HD2	1:A:122:THR:HG21	1.82	0.44
1:A:198:ASP:OD1	1:A:198:ASP:N	2.51	0.44
1:C:611:TRP:HA	1:C:611:TRP:CE3	2.53	0.44
2:D:553:PRO:HB3	2:D:649:ASN:ND2	2.32	0.44
1:A:403:ILE:HD12	1:A:404:HIS:H	1.83	0.44
1:A:470:MET:CE	1:A:771:ASN:HB3	2.48	0.44
2:B:548:SER:O	2:B:548:SER:OG	2.26	0.44
1:C:228:ALA:HA	1:C:231:VAL:HG22	1.99	0.44
2:D:153:GLN:O	2:D:157:MET:HG2	2.16	0.44
4:L:2:ILE:HB	4:L:4:MET:HE1	1.99	0.44
1:A:68:LYS:HG3	1:A:74:MET:HE2	1.99	0.44
1:A:215:GLU:OE1	1:A:215:GLU:N	2.51	0.44
1:A:519:ILE:HG12	1:A:529:PHE:CD2	2.53	0.44
2:B:367:LEU:HD11	2:B:371:ARG:HA	2.00	0.44
2:B:57:ASP:HB2	2:B:294:ARG:NH1	2.33	0.44
2:B:162:GLU:HB3	2:B:197:TRP:CH2	2.53	0.44
2:D:126:ILE:HG22	2:D:146:PHE:CE2	2.53	0.44
1:A:540:ILE:HD12	1:A:540:ILE:H	1.82	0.43
1:C:562:LEU:CD1	2:D:815:ILE:HG13	2.48	0.43
1:C:639:PHE:HA	1:C:642:ILE:HG22	2.00	0.43
4:L:149:GLN:HE22	4:L:197:GLU:HB3	1.83	0.43
1:A:37:LYS:HA	1:A:40:GLN:HG2	2.00	0.43
1:C:152:PHE:CG	1:C:183:LEU:HD13	2.54	0.43
1:C:411:VAL:HG22	1:C:455:CYS:SG	2.58	0.43
1:A:68:LYS:HE2	1:A:73:GLN:CG	2.38	0.43
1:A:170:ASP:OD1	1:A:171:HIS:N	2.51	0.43
2:B:158:LEU:HD21	2:B:189:THR:HG21	1.98	0.43
2:B:234:LYS:O	2:B:238:THR:HG23	2.18	0.43
2:B:524:ASP:N	2:B:524:ASP:OD1	2.51	0.43
2:D:86:CYS:HA	2:D:89:MET:SD	2.59	0.43
2:D:600:PHE:HE1	2:D:623:PRO:HA	1.83	0.43
1:A:551:LEU:HG	1:A:552:ASP:H	1.84	0.43
2:B:233:THR:HG22	2:B:234:LYS:H	1.83	0.43
2:B:638:PHE:HD1	1:C:816:VAL:HG12	1.83	0.43
1:C:704:ARG:O	1:C:708:LYS:N	2.51	0.43
2:D:406:LEU:HD21	2:D:474:PHE:CD2	2.47	0.43
3:H:99:SER:H	3:H:102:PHE:HD2	1.67	0.43

Continued on next page...

Continued from previous page...

Atom-1	Atom-2	Interatomic distance (Å)	Clash overlap (Å)
3:H:136:GLY:HA2	3:H:151:TRP:CZ2	2.53	0.43
1:A:128:TYR:HB3	1:A:137:PHE:HD2	1.82	0.43
2:B:35:ILE:H	2:B:67:ARG:NH1	2.16	0.43
2:B:79:LYS:HB3	2:B:79:LYS:HE3	1.78	0.43
1:C:265:GLY:HA2	1:C:380:ILE:O	2.18	0.43
3:H:119:LYS:NZ	3:H:172:LEU:CD1	2.80	0.43
4:L:1:GLU:H2	4:L:99:THR:HG21	1.82	0.43
1:A:197:PHE:HB3	1:A:207:LEU:CD2	2.42	0.43
2:B:77:ASP:O	2:B:80:SER:OG	2.27	0.43
1:C:537:GLY:O	1:C:733:SER:N	2.46	0.43
2:B:187:ARG:HA	2:B:190:ILE:HG12	2.00	0.43
1:C:408:PHE:O	1:C:458:PHE:N	2.51	0.43
2:D:414:ALA:HB1	2:D:415:PRO:HD2	2.00	0.43
3:J:37:VAL:HG12	3:J:95:TYR:HB2	2.01	0.43
3:J:136:GLY:HA2	3:J:151:TRP:CZ2	2.53	0.43
1:A:40:GLN:O	1:A:44:GLU:HG2	2.18	0.43
1:A:357:GLN:NE2	1:A:378:LYS:O	2.51	0.43
1:A:641:MET:SD	1:A:641:MET:C	2.97	0.43
1:C:322:LYS:HA	1:C:325:LEU:CD1	2.49	0.43
1:A:204:VAL:HG23	1:A:207:LEU:HD13	2.01	0.43
1:A:787:ASP:O	1:A:791:THR:HG23	2.19	0.43
2:B:77:ASP:O	2:B:81:ILE:HG12	2.19	0.43
2:B:612:LEU:HD21	2:B:636:ALA:HA	2.01	0.43
2:B:783:LEU:HD23	2:B:783:LEU:HA	1.81	0.43
2:B:788:GLU:O	2:B:792:LEU:HG	2.19	0.43
1:C:44:GLU:O	1:C:48:GLN:HG2	2.19	0.43
2:D:569:VAL:HG12	2:D:609:LEU:HD21	1.99	0.43
4:L:110:ARG:HG2	4:L:111:THR:H	1.84	0.43
2:B:778:LEU:HD11	1:C:525:GLN:HB2	2.01	0.43
1:C:180:LEU:O	1:C:184:LEU:CD2	2.66	0.43
3:J:35:GLY:HA2	3:J:50:ILE:HA	2.01	0.43
1:C:52:ARG:O	1:C:52:ARG:NH1	2.52	0.42
1:C:570:VAL:HG22	1:C:636:TRP:CZ2	2.54	0.42
1:A:502:MET:HE1	1:A:527:ILE:HD11	2.00	0.42
1:A:699:LEU:HD23	1:A:699:LEU:HA	1.85	0.42
2:B:85:ILE:O	2:B:89:MET:HG2	2.18	0.42
1:C:180:LEU:HD12	1:C:183:LEU:HD11	2.00	0.42
1:C:378:LYS:HE3	1:C:379:ILE:O	2.19	0.42
3:H:77:SER:O	3:H:77:SER:OG	2.37	0.42
2:B:99:PHE:CD1	2:B:101:ASP:OD1	2.72	0.42
1:C:637:ALA:O	1:C:640:ALA:HB3	2.18	0.42

Continued on next page...

Continued from previous page...

Atom-1	Atom-2	Interatomic distance (Å)	Clash overlap (Å)
2:D:467:LYS:NZ	2:D:792:LEU:HD21	2.34	0.42
2:D:560:VAL:O	2:D:564:VAL:HG13	2.19	0.42
3:H:138:LEU:HD13	3:H:176:SER:OG	2.19	0.42
2:B:281:SER:OG	2:B:282:TYR:N	2.52	0.42
2:B:472:VAL:HG23	2:B:474:PHE:CD2	2.54	0.42
2:B:619:PRO:O	2:B:619:PRO:CD	2.67	0.42
4:K:11:LEU:HA	4:K:11:LEU:HD23	1.84	0.42
4:K:102:GLN:CD	4:K:102:GLN:H	2.23	0.42
1:A:128:TYR:HB3	1:A:137:PHE:CD2	2.54	0.42
1:C:33:LEU:HA	1:C:93:SER:OG	2.19	0.42
4:K:81:GLU:H	4:K:81:GLU:HG2	1.72	0.42
1:A:165:LEU:O	1:A:166:LEU:HD12	2.19	0.42
1:A:547:PRO:O	1:A:548:ARG:HG3	2.20	0.42
2:B:53:ALA:O	2:B:294:ARG:HD2	2.19	0.42
2:B:440:ILE:HD12	2:B:451:GLY:O	2.20	0.42
1:C:325:LEU:HD12	1:C:326:MET:HG3	2.00	0.42
1:A:117:PRO:HA	1:A:136:SER:HB2	2.02	0.42
2:B:624:LYS:O	2:B:629:LYS:NZ	2.53	0.42
1:C:126:SER:HB2	1:C:143:PRO:HB2	2.02	0.42
3:H:1:GLN:O	3:H:3:GLN:NE2	2.52	0.42
4:L:4:MET:HB3	4:L:23:CYS:SG	2.60	0.42
1:A:73:GLN:HA	1:A:76:LEU:HD13	2.01	0.42
1:A:559:GLN:N	2:B:812:GLN:O	2.53	0.42
2:B:162:GLU:HB3	2:B:197:TRP:HH2	1.84	0.42
1:C:47:ASN:HA	1:C:50:ASN:HD21	1.85	0.42
1:C:642:ILE:O	1:C:642:ILE:HG13	2.20	0.42
2:D:81:ILE:O	2:D:85:ILE:HG12	2.20	0.42
4:L:69:THR:O	4:L:70:GLU:HG3	2.20	0.42
4:L:134:VAL:HB	4:L:181:LEU:HG	2.02	0.42
1:A:109:TYR:CE2	2:B:114:PHE:CB	3.01	0.42
2:B:404:ASP:OD1	2:B:404:ASP:N	2.53	0.42
1:C:106:PRO:O	1:C:110:THR:OG1	2.26	0.42
1:C:254:ILE:HD12	1:C:268:GLY:HA3	2.01	0.42
3:J:74:ARG:HD2	3:J:74:ARG:HA	1.84	0.42
1:A:109:TYR:OH	2:B:110:GLN:C	2.58	0.42
1:A:400:ILE:HG21	1:A:463:LEU:HD22	2.01	0.42
2:D:124:LEU:HD22	2:D:144:PHE:HB2	2.01	0.42
2:D:760:THR:HG22	2:D:761:GLY:N	2.35	0.42
1:A:94:HIS:HA	1:A:103:THR:HG21	2.02	0.41
1:C:378:LYS:HA	1:C:378:LYS:HD2	1.80	0.41
1:C:478:LEU:HD23	1:C:479:VAL:N	2.35	0.41

Continued on next page...

Continued from previous page...

Atom-1	Atom-2	Interatomic distance (Å)	Clash overlap (Å)
2:D:468:ILE:HG22	2:D:474:PHE:CE1	2.55	0.41
3:J:121:PRO:HB3	3:J:142:TYR:HB3	2.02	0.41
1:A:32:VAL:O	1:A:67:HIS:NE2	2.53	0.41
1:A:346:ARG:HD2	1:A:346:ARG:HA	1.72	0.41
1:A:501:MET:HE3	1:A:513:ILE:CG2	2.49	0.41
1:A:736:LEU:HD13	1:A:736:LEU:HA	1.82	0.41
2:D:182:PHE:O	2:D:186:ILE:HG12	2.19	0.41
1:A:381:TRP:CD1	1:A:389:PRO:HD3	2.55	0.41
1:A:576:MET:CE	1:A:632:LEU:HD13	2.50	0.41
2:B:368:ASN:OD1	2:B:369:LYS:N	2.48	0.41
1:A:243:SER:HA	1:A:385:GLU:OE2	2.21	0.41
2:B:296:GLY:O	2:B:300:ILE:HG22	2.20	0.41
2:B:358:MET:HB2	2:B:359:HIS:ND1	2.35	0.41
2:B:537:MET:HE1	2:B:748:LEU:HB3	2.01	0.41
2:B:612:LEU:HA	2:B:616:ASN:HB2	2.01	0.41
2:D:510:VAL:HG23	2:D:764:ILE:HG22	2.02	0.41
3:J:39:GLN:HA	3:J:44:GLY:O	2.20	0.41
4:L:203:LEU:HD13	4:L:207:VAL:HG22	2.02	0.41
1:A:432:LYS:HB3	1:A:432:LYS:HE3	1.89	0.41
1:A:465:LYS:NZ	1:A:468:ARG:HH21	2.18	0.41
1:A:477:HIS:ND1	1:A:478:LEU:O	2.52	0.41
2:B:631:MET:HA	2:B:631:MET:CE	2.50	0.41
2:D:134:MET:SD	2:D:134:MET:C	2.99	0.41
3:J:145:GLU:OE2	3:J:173:TYR:CE2	2.73	0.41
3:H:165:ALA:HA	3:H:175:LEU:HB3	2.02	0.41
1:A:379:ILE:HD12	1:A:381:TRP:CH2	2.55	0.41
2:B:537:MET:HE3	2:B:538:VAL:N	2.35	0.41
1:C:181:GLU:C	1:C:184:LEU:HG	2.41	0.41
4:K:138:LEU:HD21	4:K:198:VAL:HG13	2.03	0.41
1:A:825:VAL:O	1:A:829:PHE:CD1	2.74	0.41
2:B:478:LEU:N	2:B:478:LEU:HD23	2.36	0.41
1:C:520:ASN:N	1:C:520:ASN:OD1	2.53	0.41
2:D:489:LYS:HG3	2:D:494:TRP:HE1	1.84	0.41
2:D:537:MET:HA	2:D:750:THR:HA	2.02	0.41
3:H:40:MET:HA	3:H:92:ALA:HB1	2.03	0.41
3:J:192:ILE:HG12	3:J:207:LYS:HA	2.03	0.41
1:A:32:VAL:HG22	1:A:67:HIS:CD2	2.55	0.41
2:B:354:GLU:HA	2:B:354:GLU:OE1	2.20	0.41
2:B:461:CYS:O	2:B:464:ILE:HG22	2.21	0.41
2:B:729:PHE:O	2:B:730:ILE:HD13	2.20	0.41
1:C:56:TRP:CE3	1:C:57:LYS:HB2	2.55	0.41

Continued on next page...

Continued from previous page...

Atom-1	Atom-2	Interatomic distance (Å)	Clash overlap (Å)
1:C:217:ARG:NH2	1:C:393:GLN:HG3	2.35	0.41
1:C:554:PHE:CZ	1:C:816:VAL:HG22	2.55	0.41
2:D:105:GLN:O	2:D:129:GLY:HA3	2.21	0.41
3:H:6:GLN:HA	3:H:22:CYS:HB2	2.03	0.41
3:H:36:TRP:CZ3	3:H:96:CYS:HB3	2.55	0.41
3:J:119:LYS:NZ	3:J:141:ASP:HB3	2.35	0.41
4:L:61:ARG:HG3	4:L:62:PHE:CD1	2.56	0.41
4:L:116:SER:HB2	4:L:139:ASN:HB2	2.03	0.41
1:A:143:PRO:HG2	1:A:146:HIS:HB2	2.03	0.41
2:B:489:LYS:HB2	2:B:494:TRP:CZ3	2.55	0.41
3:J:34:ILE:HG22	3:J:51:ILE:O	2.21	0.41
1:A:94:HIS:N	1:A:122:THR:OG1	2.54	0.40
1:A:357:GLN:HG2	1:A:380:ILE:HD11	2.03	0.40
1:A:458:PHE:CE1	1:A:788:LEU:HB3	2.56	0.40
2:B:124:LEU:HA	2:B:144:PHE:O	2.21	0.40
1:C:70:ASN:O	1:C:74:MET:SD	2.79	0.40
1:C:148:SER:HA	1:C:151:TRP:CE3	2.56	0.40
2:D:783:LEU:HD12	2:D:783:LEU:HA	1.92	0.40
3:H:22:CYS:O	3:H:79:ALA:N	2.50	0.40
1:A:184:LEU:HD23	1:A:184:LEU:HA	1.72	0.40
2:B:161:MET:HE2	2:B:161:MET:HB2	1.94	0.40
2:D:366:LEU:HD23	2:D:376:VAL:CG2	2.52	0.40
3:H:102:PHE:C	3:H:105:TRP:HE1	2.25	0.40
4:K:200:HIS:HD2	4:K:202:GLY:H	1.68	0.40
1:A:570:VAL:HG11	1:A:611:TRP:HZ3	1.86	0.40
1:A:694:ARG:HE	1:A:694:ARG:HB3	1.72	0.40
2:B:350:SER:O	2:B:358:MET:HG2	2.21	0.40
2:B:504:LYS:HB2	2:B:504:LYS:HE2	1.64	0.40
2:B:681:PHE:HE1	2:B:727:ASP:HA	1.87	0.40
1:C:341:ASN:HD21	1:C:343:ASP:HB3	1.86	0.40
1:A:618:GLY:O	1:A:619:ILE:HG13	2.22	0.40
1:A:649:ALA:HB1	2:B:651:ALA:HA	2.03	0.40
2:B:351:PHE:HA	2:B:357:GLN:HA	2.04	0.40
1:C:655:LEU:HD12	1:C:655:LEU:HA	1.92	0.40
1:A:669:ASP:OD2	1:A:671:ARG:HB3	2.21	0.40
2:B:360:PRO:HD2	2:B:379:TRP:HZ3	1.85	0.40
1:C:498:TRP:HE1	1:C:526:TYR:HD2	1.65	0.40
1:C:731:TRP:CG	1:C:732:ASP:N	2.89	0.40
2:D:410:THR:HB	2:D:510:VAL:HG12	2.04	0.40
2:D:556:ALA:O	2:D:560:VAL:HG22	2.22	0.40

There are no symmetry-related clashes.

5.3 Torsion angles [i](#)

5.3.1 Protein backbone [i](#)

In the following table, the Percentiles column shows the percent Ramachandran outliers of the chain as a percentile score with respect to all PDB entries followed by that with respect to all EM entries.

The Analysed column shows the number of residues for which the backbone conformation was analysed, and the total number of residues.

Mol	Chain	Analysed	Favoured	Allowed	Outliers	Percentiles	
1	A	798/819 (97%)	715 (90%)	79 (10%)	4 (0%)	25	62
1	C	798/819 (97%)	720 (90%)	74 (9%)	4 (0%)	25	62
2	B	781/815 (96%)	687 (88%)	93 (12%)	1 (0%)	48	81
2	D	776/815 (95%)	696 (90%)	77 (10%)	3 (0%)	30	66
3	H	207/211 (98%)	195 (94%)	12 (6%)	0	100	100
3	J	206/211 (98%)	198 (96%)	8 (4%)	0	100	100
4	K	213/215 (99%)	195 (92%)	18 (8%)	0	100	100
4	L	213/215 (99%)	198 (93%)	15 (7%)	0	100	100
All	All	3992/4120 (97%)	3604 (90%)	376 (9%)	12 (0%)	38	71

All (12) Ramachandran outliers are listed below:

Mol	Chain	Res	Type
1	A	98	PRO
1	A	550	THR
1	A	556	ASN
1	C	98	PRO
1	C	416	SER
1	C	376	ASP
2	D	552	GLU
1	A	796	GLN
2	B	414	ALA
2	D	414	ALA
1	C	243	SER
2	D	547	PRO

5.3.2 Protein sidechains [i](#)

In the following table, the Percentiles column shows the percent sidechain outliers of the chain as a percentile score with respect to all PDB entries followed by that with respect to all EM

entries.

The Analysed column shows the number of residues for which the sidechain conformation was analysed, and the total number of residues.

Mol	Chain	Analysed	Rotameric	Outliers	Percentiles	
1	A	612/706 (87%)	584 (95%)	28 (5%)	23	46
1	C	539/706 (76%)	515 (96%)	24 (4%)	23	47
2	B	528/711 (74%)	502 (95%)	26 (5%)	21	44
2	D	396/711 (56%)	376 (95%)	20 (5%)	20	44
3	H	152/178 (85%)	147 (97%)	5 (3%)	33	55
3	J	135/178 (76%)	128 (95%)	7 (5%)	19	43
4	K	138/185 (75%)	135 (98%)	3 (2%)	47	66
4	L	150/185 (81%)	145 (97%)	5 (3%)	33	55
All	All	2650/3560 (74%)	2532 (96%)	118 (4%)	26	47

All (118) residues with a non-rotameric sidechain are listed below:

Mol	Chain	Res	Type
1	A	56	TRP
1	A	64	SER
1	A	76	LEU
1	A	79	CYS
1	A	81	ASP
1	A	93	SER
1	A	109	TYR
1	A	135	LEU
1	A	161	ASN
1	A	190	LYS
1	A	237	MET
1	A	313	ASN
1	A	337	ARG
1	A	357	GLN
1	A	390	ARG
1	A	392	TYR
1	A	424	PHE
1	A	446	SER
1	A	456	TYR
1	A	520	ASN
1	A	529	PHE
1	A	534	LYS
1	A	630	ARG

Continued on next page...

Continued from previous page...

Mol	Chain	Res	Type
1	A	672	LEU
1	A	679	PHE
1	A	681	TYR
1	A	694	ARG
1	A	733	SER
2	B	45	SER
2	B	61	HIS
2	B	86	CYS
2	B	99	PHE
2	B	101	ASP
2	B	102	ASP
2	B	138	ASP
2	B	252	TYR
2	B	265	ASP
2	B	287	TYR
2	B	322	TYR
2	B	334	MET
2	B	375	ARG
2	B	406	LEU
2	B	460	PHE
2	B	504	LYS
2	B	600	PHE
2	B	617	SER
2	B	624	LYS
2	B	681	PHE
2	B	683	PHE
2	B	699	TYR
2	B	736	LEU
2	B	770	SER
2	B	782	GLN
2	B	786	ASP
1	C	25	LYS
1	C	40	GLN
1	C	43	ARG
1	C	52	ARG
1	C	115	ARG
1	C	121	LEU
1	C	137	PHE
1	C	148	SER
1	C	158	TYR
1	C	237	MET
1	C	311	ASN

Continued on next page...

Continued from previous page...

Mol	Chain	Res	Type
1	C	315	TRP
1	C	321	PHE
1	C	325	LEU
1	C	337	ARG
1	C	440	ASN
1	C	554	PHE
1	C	710	ASN
1	C	753	PHE
1	C	754	PHE
1	C	762	MET
1	C	766	SER
1	C	780	HIS
1	C	784	PHE
2	D	89	MET
2	D	114	PHE
2	D	149	SER
2	D	158	LEU
2	D	182	PHE
2	D	225	SER
2	D	252	TYR
2	D	256	TRP
2	D	277	LEU
2	D	287	TYR
2	D	437	GLU
2	D	460	PHE
2	D	600	PHE
2	D	653	PHE
2	D	705	TYR
2	D	732	ASP
2	D	742	ARG
2	D	823	TYR
2	D	829	MET
2	D	842	PHE
3	H	29	PHE
3	H	105	TRP
3	H	119	LYS
3	H	163	PHE
3	H	194	ASN
3	J	27	TYR
3	J	38	ARG
3	J	52	TYR
3	J	64	PHE

Continued on next page...

Continued from previous page...

Mol	Chain	Res	Type
3	J	102	PHE
3	J	104	TYR
3	J	168	GLN
4	K	61	ARG
4	K	168	GLN
4	K	175	TYR
4	L	18	ARG
4	L	70	GLU
4	L	82	ASP
4	L	92	ASN
4	L	97	SER

Sometimes sidechains can be flipped to improve hydrogen bonding and reduce clashes. All (5) such sidechains are listed below:

Mol	Chain	Res	Type
2	B	110	GLN
2	B	245	ASN
1	C	147	GLN
1	C	311	ASN
1	C	313	ASN

5.3.3 RNA [i](#)

There are no RNA molecules in this entry.

5.4 Non-standard residues in protein, DNA, RNA chains [i](#)

There are no non-standard protein/DNA/RNA residues in this entry.

5.5 Carbohydrates [i](#)

There are no oligosaccharides in this entry.

5.6 Ligand geometry [i](#)

There are no ligands in this entry.

5.7 Other polymers [i](#)

There are no such residues in this entry.

5.8 Polymer linkage issues [i](#)

The following chains have linkage breaks:

Mol	Chain	Number of breaks
3	J	1
3	H	1
1	A	1

All chain breaks are listed below:

Model	Chain	Residue-1	Atom-1	Residue-2	Atom-2	Distance (Å)
1	J	130:SER	C	131:GLY	N	8.86
1	H	130:SER	C	131:GLY	N	7.85
1	A	446:SER	C	447:PRO	N	1.71

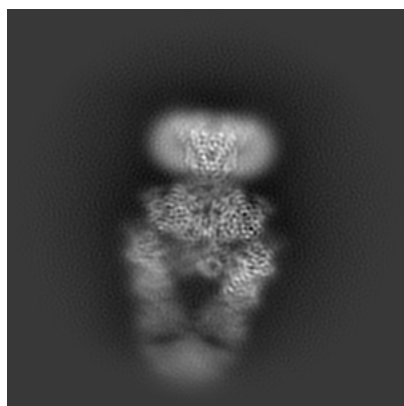
6 Map visualisation [i](#)

This section contains visualisations of the EMDB entry EMD-43540. These allow visual inspection of the internal detail of the map and identification of artifacts.

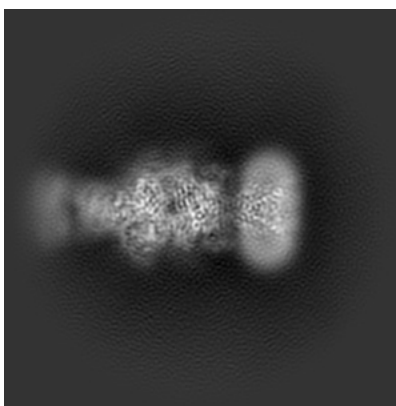
Images derived from a raw map, generated by summing the deposited half-maps, are presented below the corresponding image components of the primary map to allow further visual inspection and comparison with those of the primary map.

6.1 Orthogonal projections [i](#)

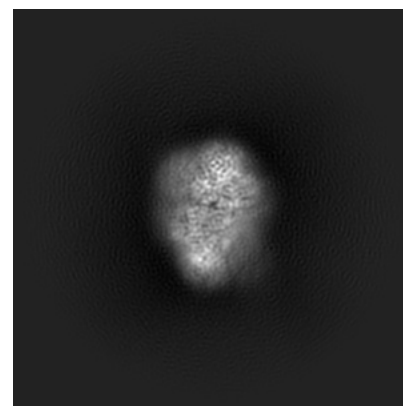
6.1.1 Primary map



X

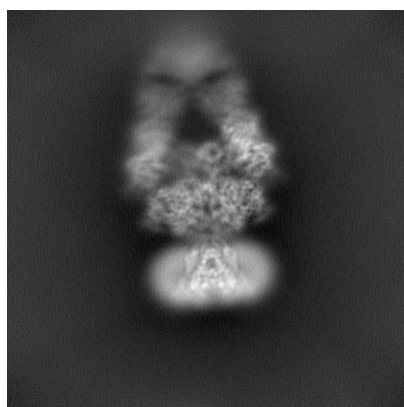


Y

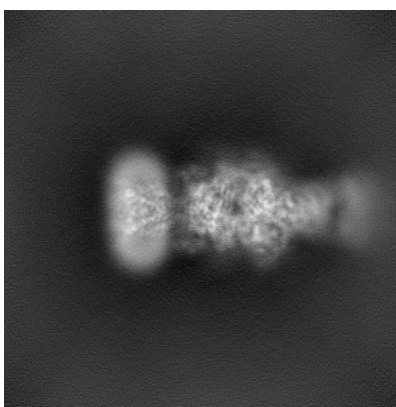


Z

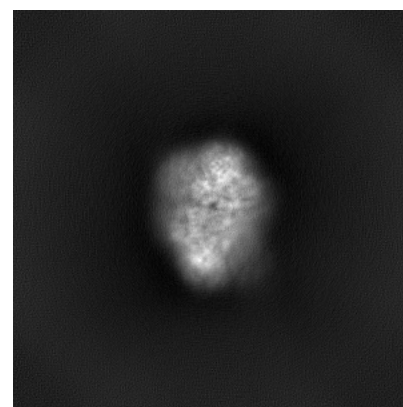
6.1.2 Raw map



X



Y

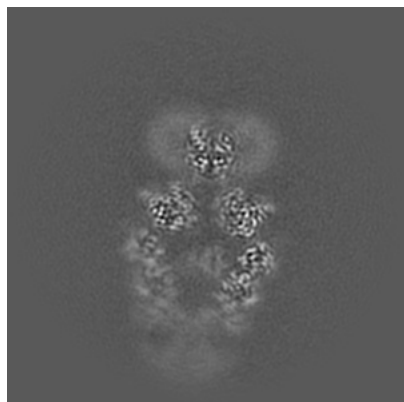


Z

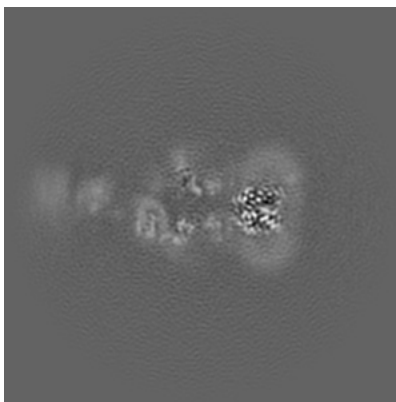
The images above show the map projected in three orthogonal directions.

6.2 Central slices [i](#)

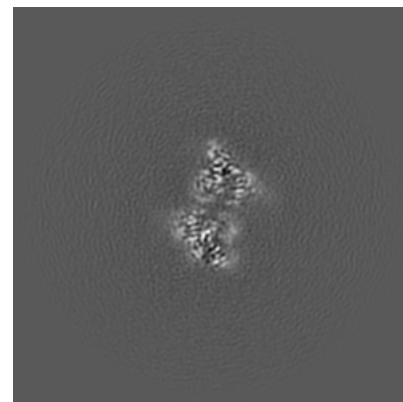
6.2.1 Primary map



X Index: 215

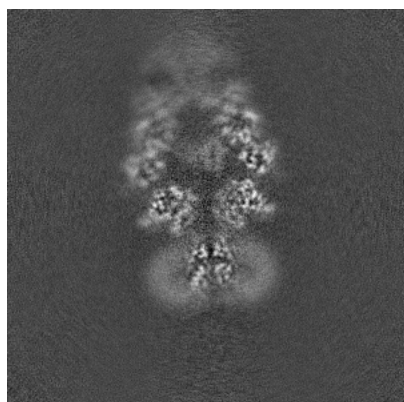


Y Index: 215

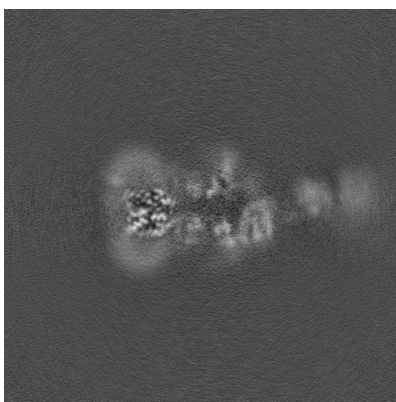


Z Index: 215

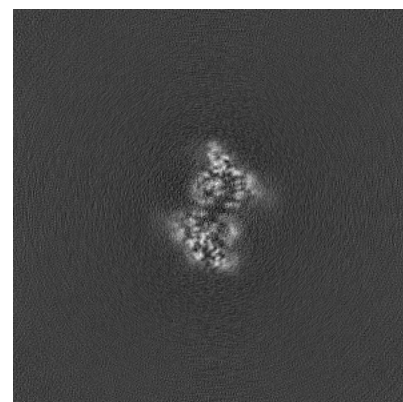
6.2.2 Raw map



X Index: 215



Y Index: 215

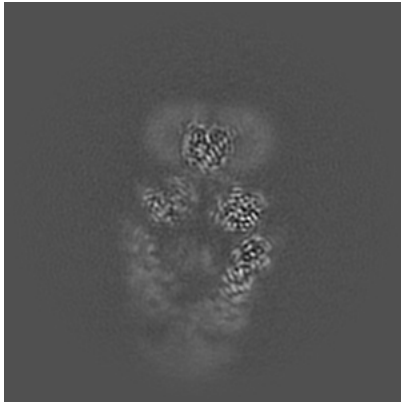


Z Index: 215

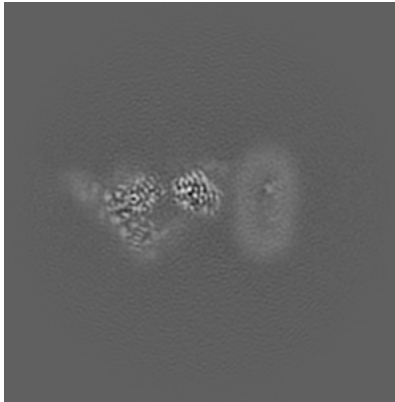
The images above show central slices of the map in three orthogonal directions.

6.3 Largest variance slices [i](#)

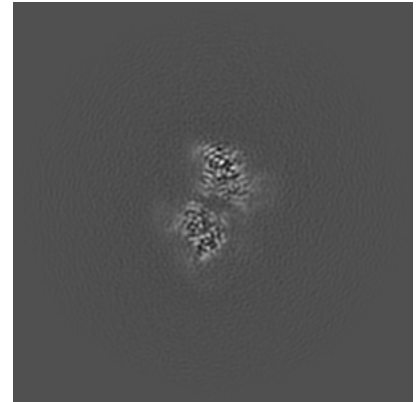
6.3.1 Primary map



X Index: 221

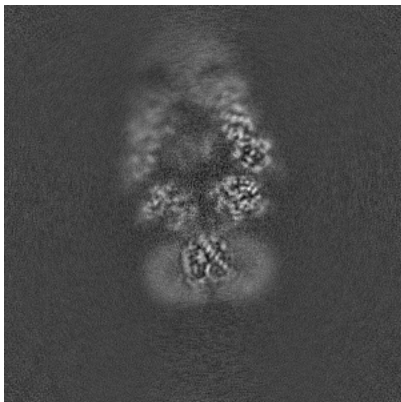


Y Index: 253

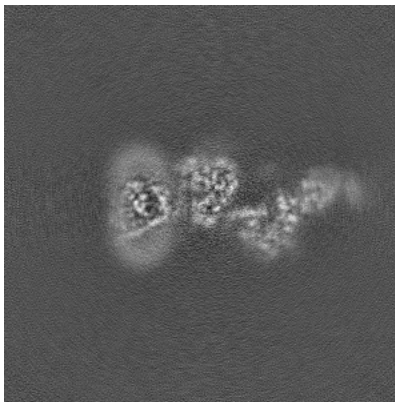


Z Index: 202

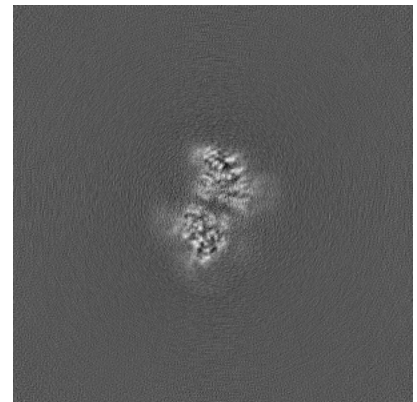
6.3.2 Raw map



X Index: 221



Y Index: 236

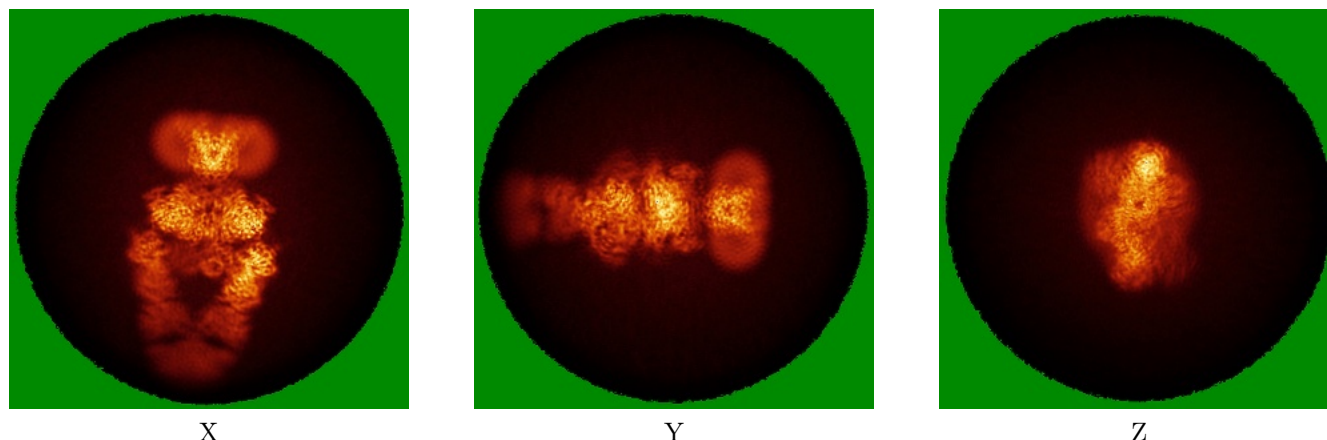


Z Index: 226

The images above show the largest variance slices of the map in three orthogonal directions.

6.4 Orthogonal standard-deviation projections (False-color) [i](#)

6.4.1 Primary map

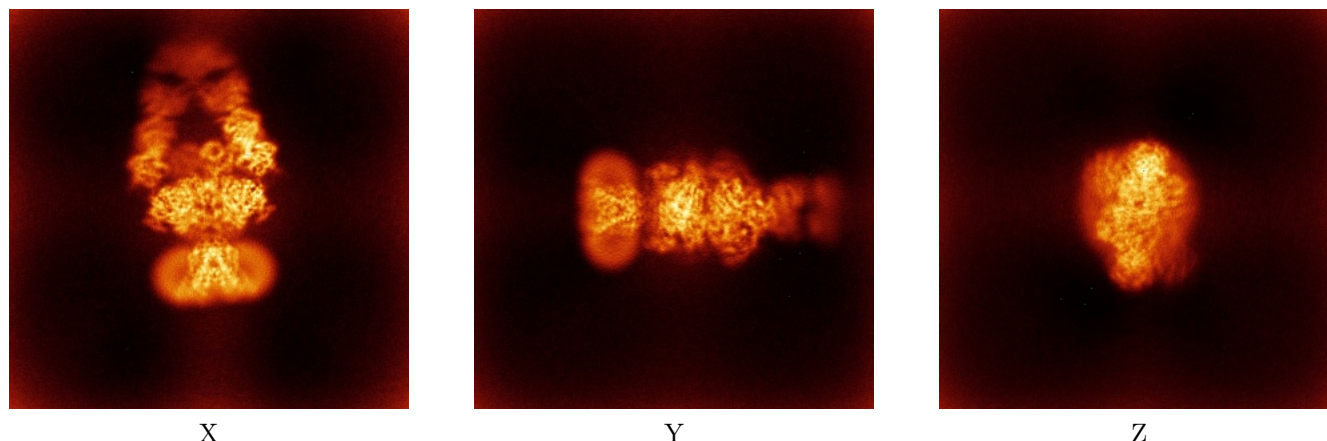


X

Y

Z

6.4.2 Raw map



X

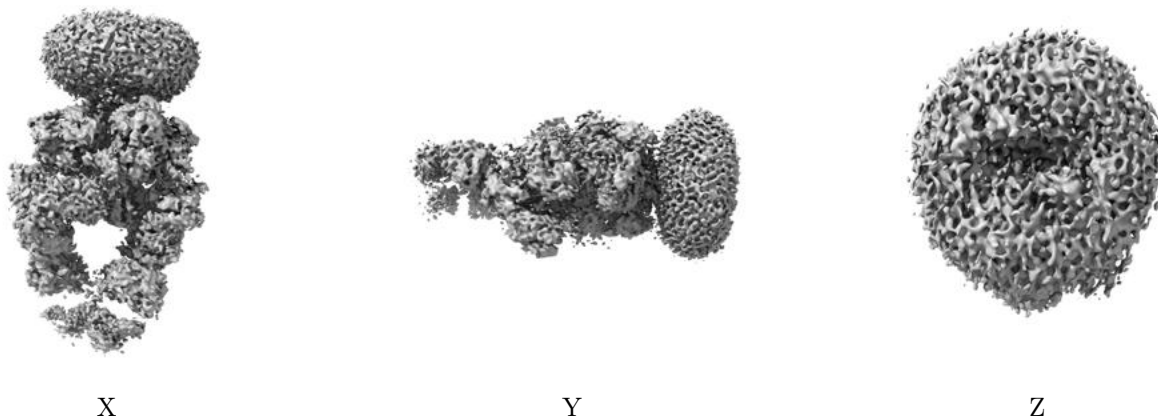
Y

Z

The images above show the map standard deviation projections with false color in three orthogonal directions. Minimum values are shown in green, max in blue, and dark to light orange shades represent small to large values respectively.

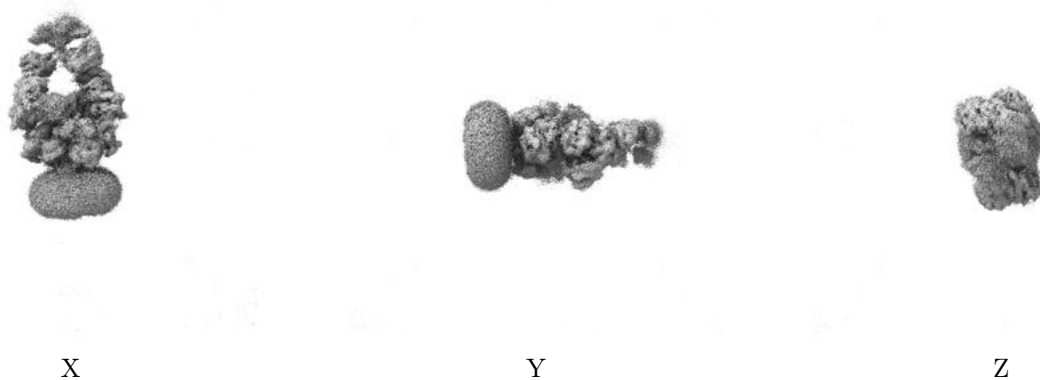
6.5 Orthogonal surface views [i](#)

6.5.1 Primary map



The images above show the 3D surface view of the map at the recommended contour level 0.0599. These images, in conjunction with the slice images, may facilitate assessment of whether an appropriate contour level has been provided.

6.5.2 Raw map



These images show the 3D surface of the raw map. The raw map's contour level was selected so that its surface encloses the same volume as the primary map does at its recommended contour level.

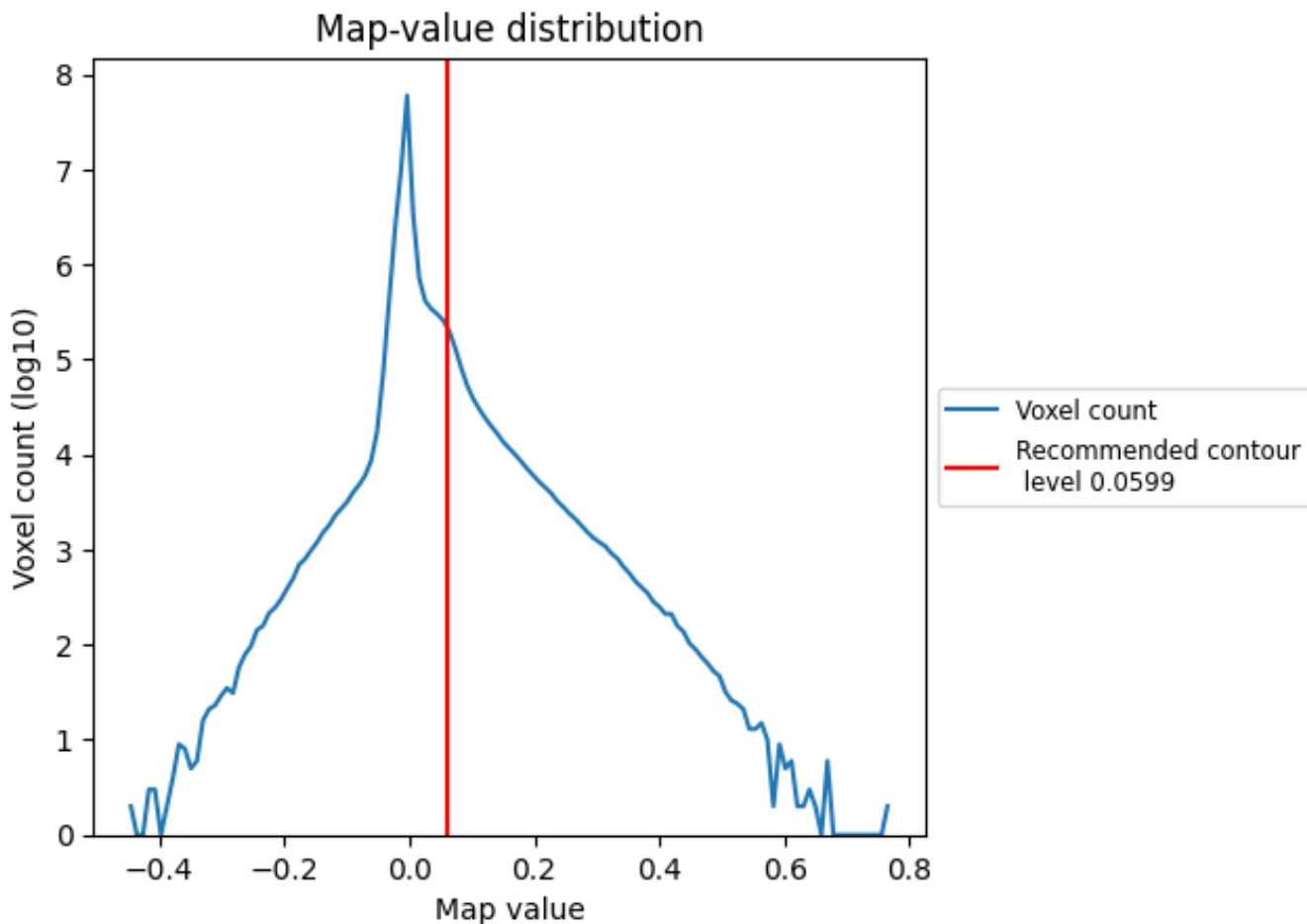
6.6 Mask visualisation [i](#)

This section was not generated. No masks/segmentation were deposited.

7 Map analysis [i](#)

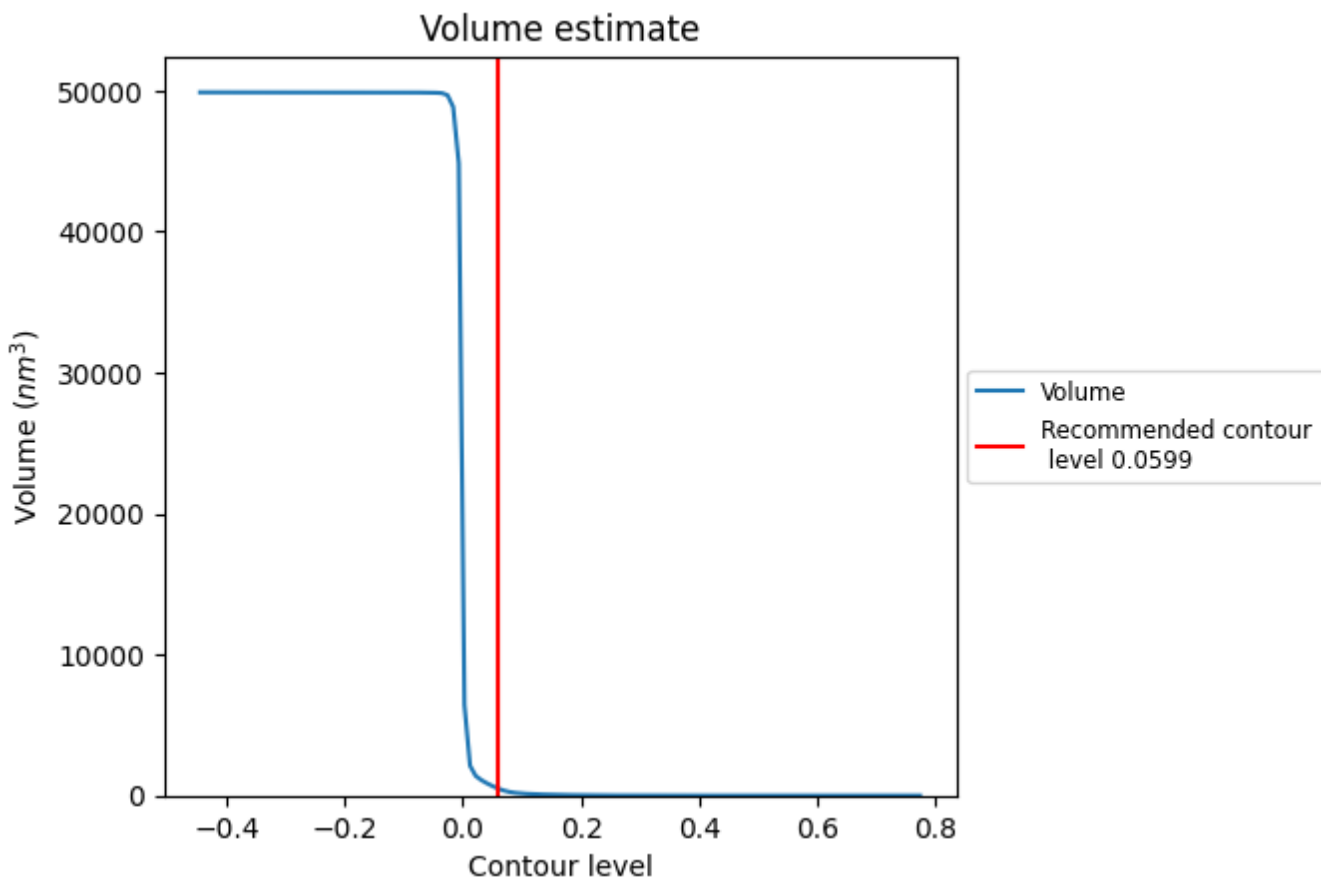
This section contains the results of statistical analysis of the map.

7.1 Map-value distribution [i](#)



The map-value distribution is plotted in 128 intervals along the x-axis. The y-axis is logarithmic. A spike in this graph at zero usually indicates that the volume has been masked.

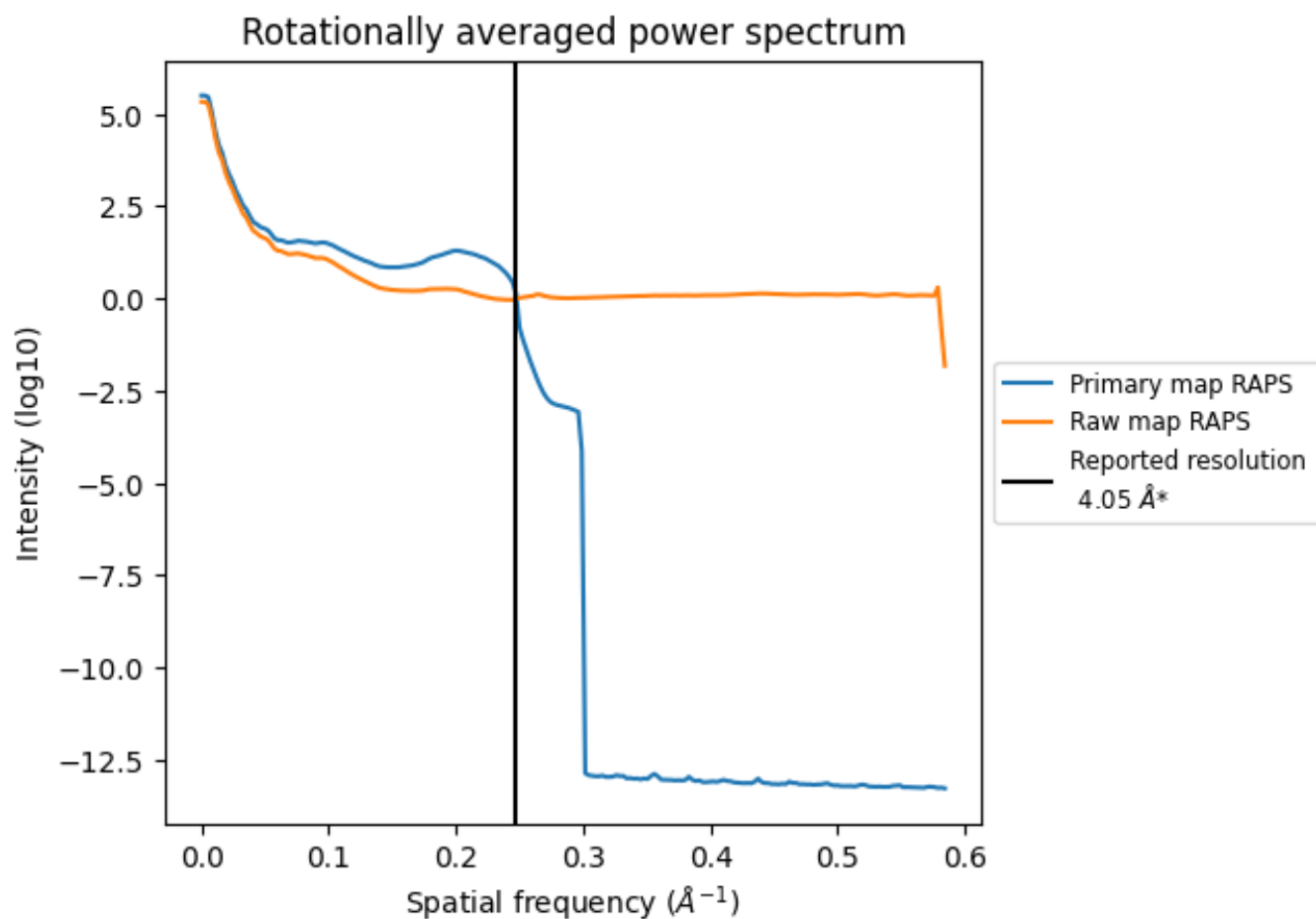
7.2 Volume estimate [i](#)



The volume at the recommended contour level is 497 nm³; this corresponds to an approximate mass of 449 kDa.

The volume estimate graph shows how the enclosed volume varies with the contour level. The recommended contour level is shown as a vertical line and the intersection between the line and the curve gives the volume of the enclosed surface at the given level.

7.3 Rotationally averaged power spectrum [i](#)

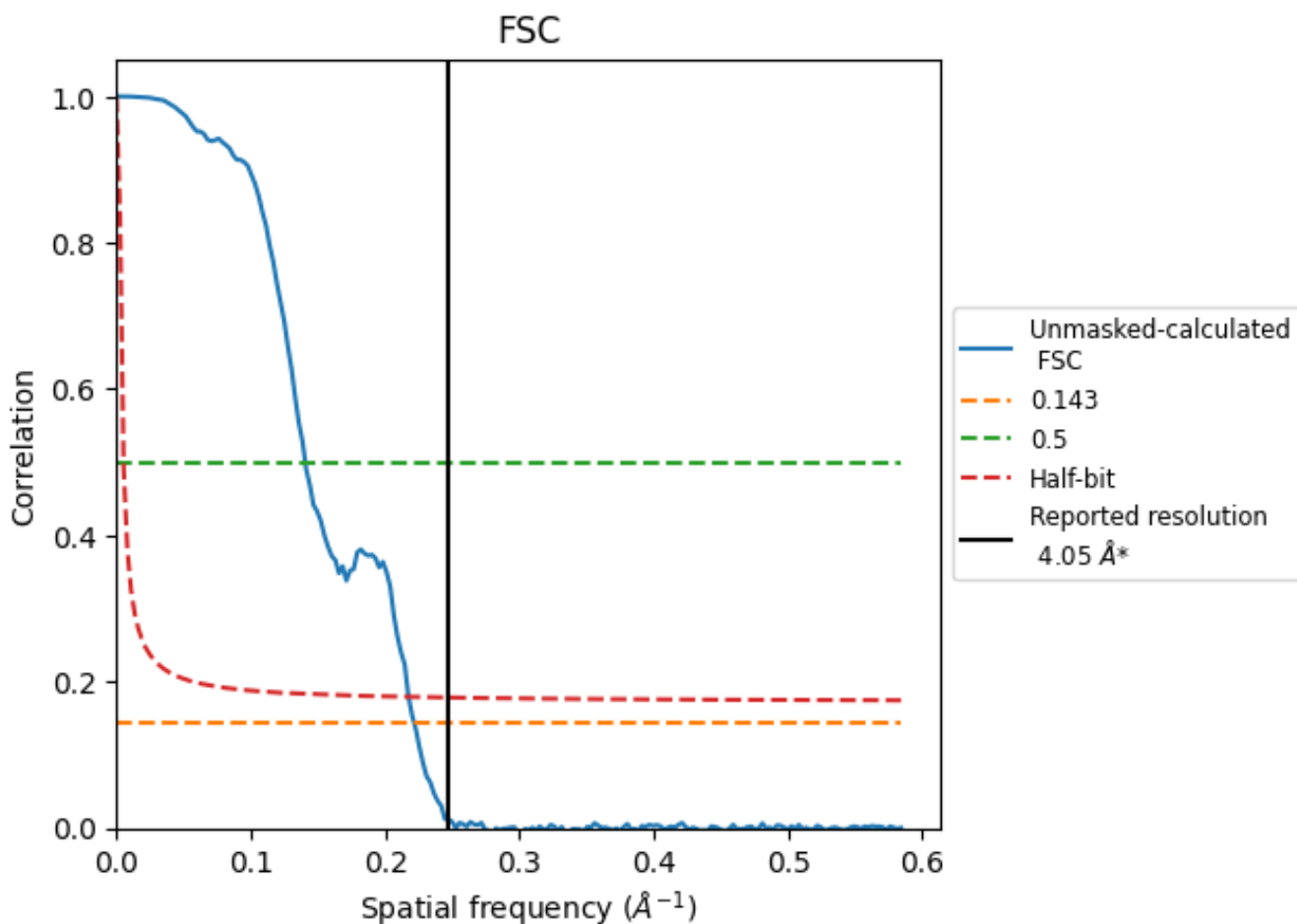


*Reported resolution corresponds to spatial frequency of 0.247 Å⁻¹

8 Fourier-Shell correlation [i](#)

Fourier-Shell Correlation (FSC) is the most commonly used method to estimate the resolution of single-particle and subtomogram-averaged maps. The shape of the curve depends on the imposed symmetry, mask and whether or not the two 3D reconstructions used were processed from a common reference. The reported resolution is shown as a black line. A curve is displayed for the half-bit criterion in addition to lines showing the 0.143 gold standard cut-off and 0.5 cut-off.

8.1 FSC [i](#)



*Reported resolution corresponds to spatial frequency of 0.247 Å⁻¹

8.2 Resolution estimates [i](#)

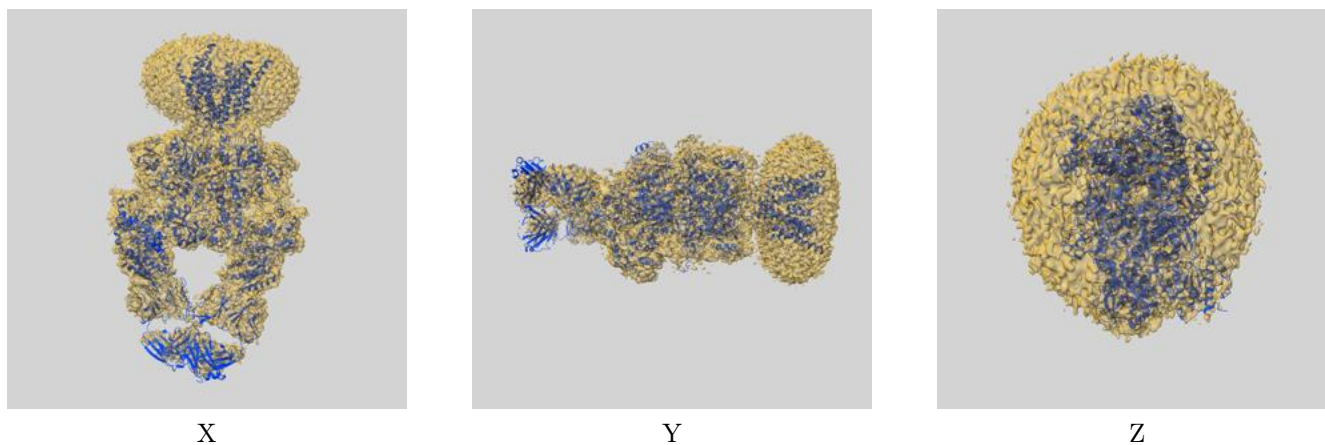
Resolution estimate (Å)	Estimation criterion (FSC cut-off)		
	0.143	0.5	Half-bit
Reported by author	4.05	-	-
Author-provided FSC curve	-	-	-
Unmasked-calculated*	4.51	7.12	4.60

*Resolution estimate based on FSC curve calculated by comparison of deposited half-maps. The value from deposited half-maps intersecting FSC 0.143 CUT-OFF 4.51 differs from the reported value 4.05 by more than 10 %

9 Map-model fit [i](#)

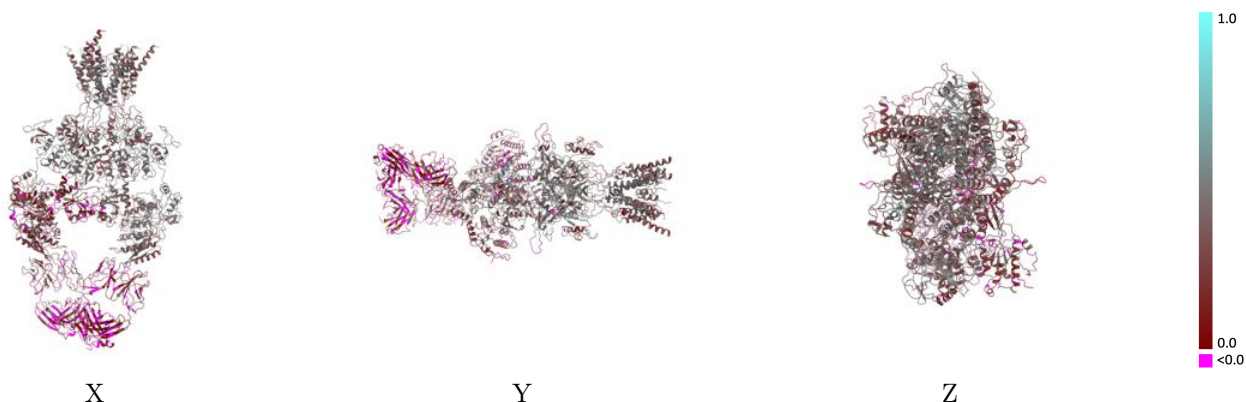
This section contains information regarding the fit between EMDB map EMD-43540 and PDB model 8VUU. Per-residue inclusion information can be found in section [3](#) on page [5](#).

9.1 Map-model overlay [i](#)



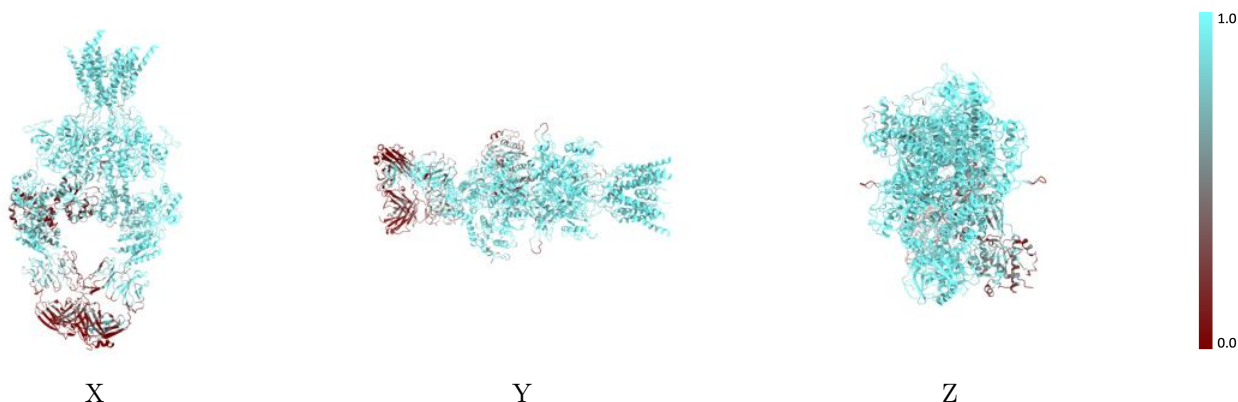
The images above show the 3D surface view of the map at the recommended contour level 0.0599 at 50% transparency in yellow overlaid with a ribbon representation of the model coloured in blue. These images allow for the visual assessment of the quality of fit between the atomic model and the map.

9.2 Q-score mapped to coordinate model [i](#)



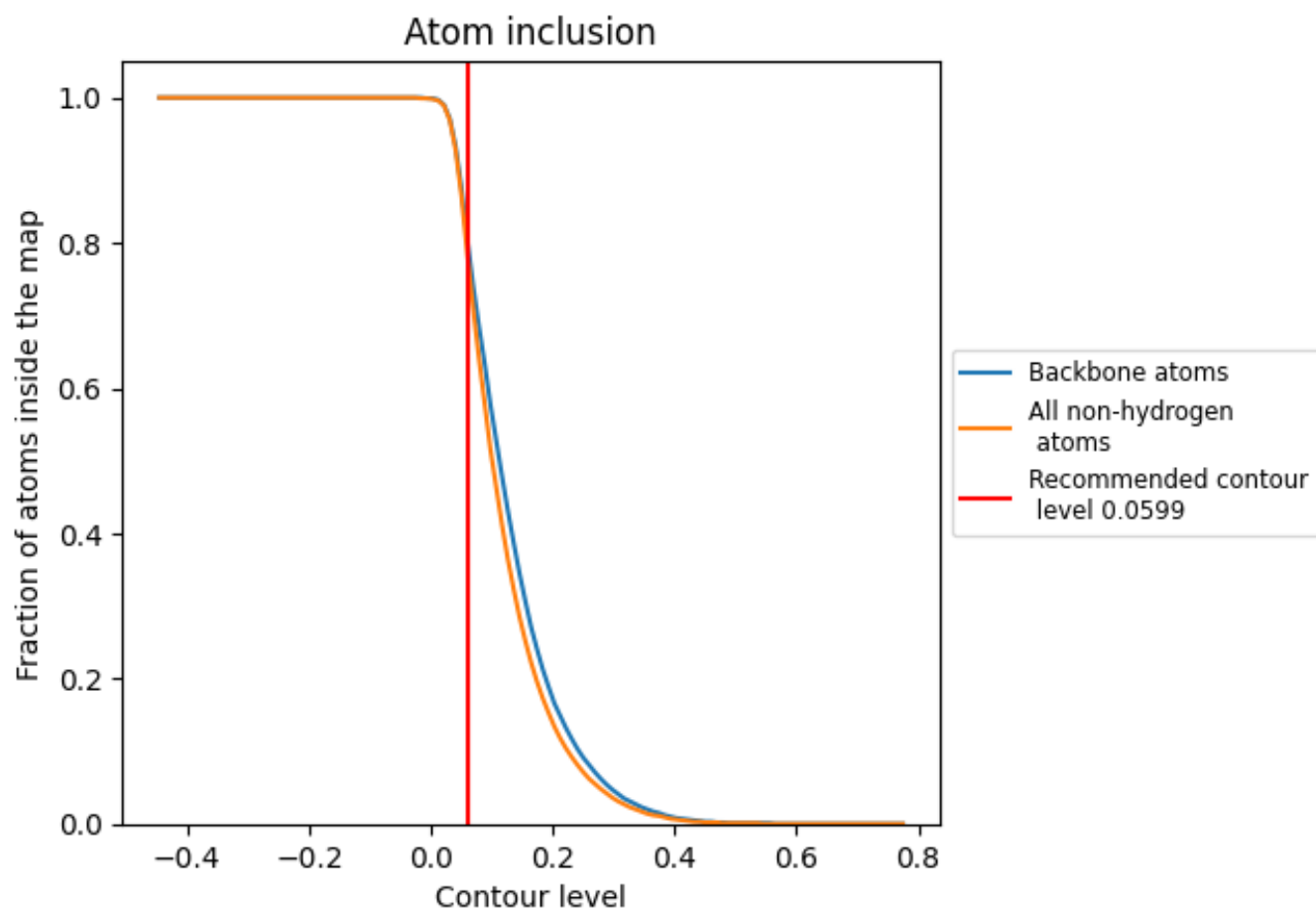
The images above show the model with each residue coloured according to its Q-score. This shows their resolvability in the map with higher Q-score values reflecting better resolvability. Please note: Q-score is calculating the resolvability of atoms, and thus high values are only expected at resolutions at which atoms can be resolved. Low Q-score values may therefore be expected for many entries.

9.3 Atom inclusion mapped to coordinate model [i](#)



The images above show the model with each residue coloured according to its atom inclusion. This shows to what extent they are inside the map at the recommended contour level (0.0599).



















9.4 Atom inclusion [i](#)



At the recommended contour level, 80% of all backbone atoms, 78% of all non-hydrogen atoms, are inside the map.

9.5 Map-model fit summary

The table lists the average atom inclusion at the recommended contour level (0.0599) and Q-score for the entire model and for each chain.

Chain	Atom inclusion	Q-score
All	 0.7840	 0.3160
A	 0.9550	 0.4230
B	 0.9110	 0.3670
C	 0.9180	 0.3630
D	 0.7230	 0.3030
H	 0.6040	 0.1280
J	 0.4090	 0.1370
K	 0.2840	 0.1420
L	 0.3810	 0.1050

