



Full wwPDB X-ray Structure Validation Report ⓘ

May 13, 2020 – 06:13 am BST

PDB ID : 2VV4
Title : hPPARgamma Ligand binding domain in complex with 6-oxoOTE
Authors : Itoh, T.; Fairall, L.; Schwabe, J.W.R.
Deposited on : 2008-06-02
Resolution : 2.35 Å(reported)

This is a Full wwPDB X-ray Structure Validation Report for a publicly released PDB entry.

We welcome your comments at validation@mail.wwpdb.org

A user guide is available at

<https://www.wwpdb.org/validation/2017/XrayValidationReportHelp>

with specific help available everywhere you see the ⓘ symbol.

The following versions of software and data (see [references ⓘ](#)) were used in the production of this report:

MolProbity : 4.02b-467
Mogul : 1.8.5 (274361), CSD as541be (2020)
Xtriage (Phenix) : 1.13
EDS : 2.11
buster-report : 1.1.7 (2018)
Percentile statistics : 20191225.v01 (using entries in the PDB archive December 25th 2019)
Refmac : 5.8.0158
CCP4 : 7.0.044 (Gargrove)
Ideal geometry (proteins) : Engh & Huber (2001)
Ideal geometry (DNA, RNA) : Parkinson et al. (1996)
Validation Pipeline (wwPDB-VP) : 2.11

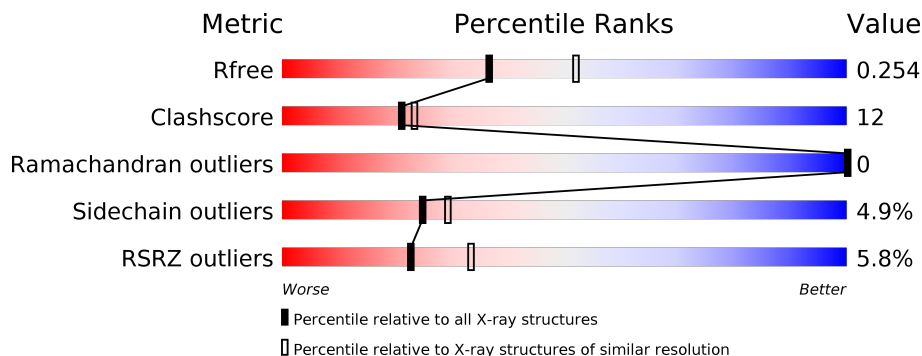
1 Overall quality at a glance

The following experimental techniques were used to determine the structure:

X-RAY DIFFRACTION

The reported resolution of this entry is 2.35 Å.

Percentile scores (ranging between 0-100) for global validation metrics of the entry are shown in the following graphic. The table shows the number of entries on which the scores are based.



Metric	Whole archive (#Entries)	Similar resolution (#Entries, resolution range(Å))
R_{free}	130704	1164 (2.36-2.36)
Clashscore	141614	1232 (2.36-2.36)
Ramachandran outliers	138981	1211 (2.36-2.36)
Sidechain outliers	138945	1212 (2.36-2.36)
RSRZ outliers	127900	1150 (2.36-2.36)

The table below summarises the geometric issues observed across the polymeric chains and their fit to the electron density. The red, orange, yellow and green segments on the lower bar indicate the fraction of residues that contain outliers for ≥ 3 , 2, 1 and 0 types of geometric quality criteria respectively. A grey segment represents the fraction of residues that are not modelled. The numeric value for each fraction is indicated below the corresponding segment, with a dot representing fractions $\leq 5\%$. The upper red bar (where present) indicates the fraction of residues that have poor fit to the electron density. The numeric value is given above the bar.

Mol	Chain	Length	Quality of chain
1	A	276	
2	B	276	

The following table lists non-polymeric compounds, carbohydrate monomers and non-standard residues in protein, DNA, RNA chains that are outliers for geometric or electron-density-fit criteria:

Mol	Type	Chain	Res	Chirality	Geometry	Clashes	Electron density
3	6OC	A	1476	-	-	X	-

2 Entry composition

There are 5 unique types of molecules in this entry. The entry contains 4187 atoms, of which 0 are hydrogens and 0 are deuteriums.

In the tables below, the ZeroOcc column contains the number of atoms modelled with zero occupancy, the AltConf column contains the number of residues with at least one atom in alternate conformation and the Trace column contains the number of residues modelled with at most 2 atoms.

- Molecule 1 is a protein called PEROXISOME PROLIFERATOR-ACTIVATED RECEPTOR GAMMA.

Mol	Chain	Residues	Atoms					ZeroOcc	AltConf	Trace
			Total	C	N	O	S			
1	A	254	2028	1306	330	382	10	0	0	0

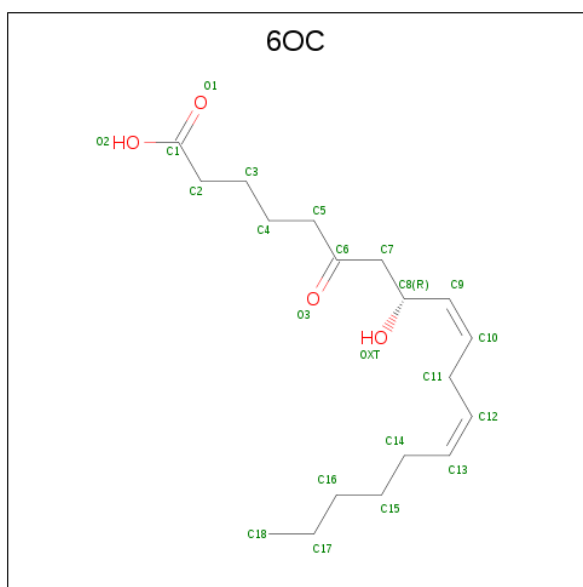
- Molecule 2 is a protein called PEROXISOME PROLIFERATOR-ACTIVATED RECEPTOR GAMMA.

Mol	Chain	Residues	Atoms					ZeroOcc	AltConf	Trace
			Total	C	N	O	S			
2	B	247	1973	1276	321	367	9	0	0	0

There is a discrepancy between the modelled and reference sequences:

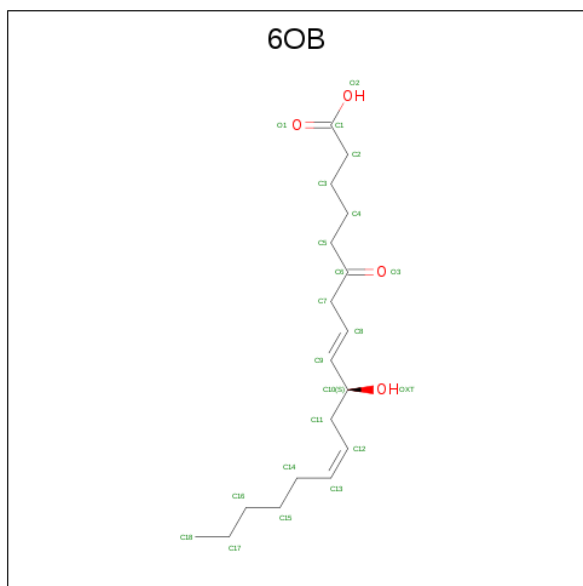
Chain	Residue	Modelled	Actual	Comment	Reference
B	253	GLN	ASN	conflict	UNP P37231

- Molecule 3 is (8R,9Z,12Z)-8-hydroxy-6-oxooctadeca-9,12-dienoic acid (three-letter code: 6OC) (formula: C₁₈H₃₀O₄).



Mol	Chain	Residues	Atoms		ZeroOcc	AltConf	
3	A	1	Total	C	O	0	0
			21	18	3		

- Molecule 4 is (8E,10S,12Z)-10-hydroxy-6-oxooctadeca-8,12-dienoic acid (three-letter code: 6OB) (formula: $C_{18}H_{30}O_4$).



Mol	Chain	Residues	Atoms		ZeroOcc	AltConf	
4	B	1	Total	C	O	0	0
			21	18	3		

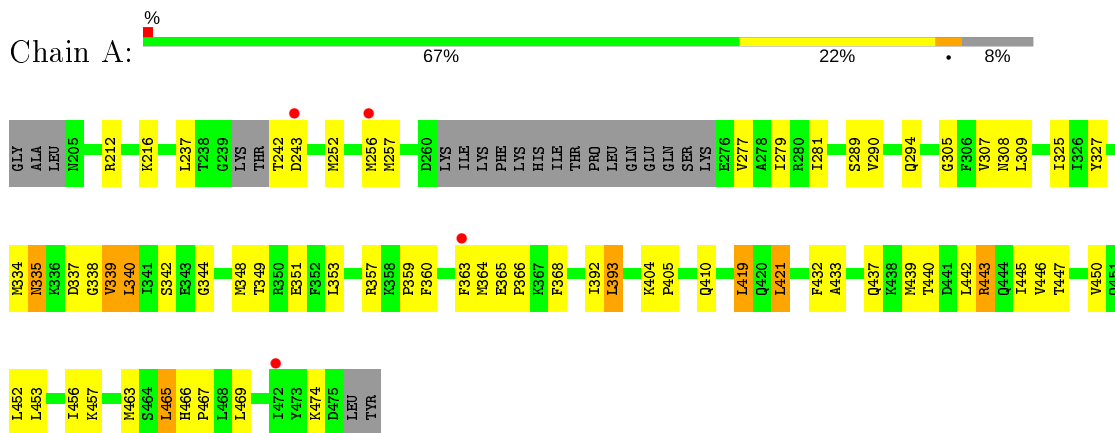
- Molecule 5 is water.

Mol	Chain	Residues	Atoms		ZeroOcc	AltConf
5	A	74	Total 74	O 74	0	0
5	B	70	Total 70	O 70	0	0

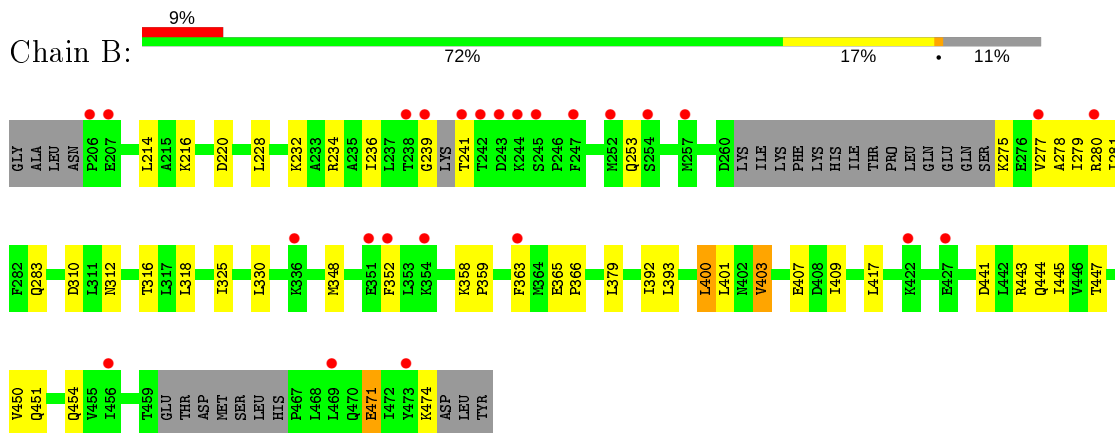
3 Residue-property plots [i](#)

These plots are drawn for all protein, RNA and DNA chains in the entry. The first graphic for a chain summarises the proportions of the various outlier classes displayed in the second graphic. The second graphic shows the sequence view annotated by issues in geometry and electron density. Residues are color-coded according to the number of geometric quality criteria for which they contain at least one outlier: green = 0, yellow = 1, orange = 2 and red = 3 or more. A red dot above a residue indicates a poor fit to the electron density ($RSRZ > 2$). Stretches of 2 or more consecutive residues without any outlier are shown as a green connector. Residues present in the sample, but not in the model, are shown in grey.

- Molecule 1: PEROXISOME PROLIFERATOR-ACTIVATED RECEPTOR GAMMA



- Molecule 2: PEROXISOME PROLIFERATOR-ACTIVATED RECEPTOR GAMMA



4 Data and refinement statistics

Property	Value	Source
Space group	C 1 2 1	Depositor
Cell constants a, b, c, α , β , γ	93.78Å 61.58Å 118.77Å 90.00° 103.64° 90.00°	Depositor
Resolution (Å)	51.02 – 2.35 51.02 – 2.35	Depositor EDS
% Data completeness (in resolution range)	99.4 (51.02-2.35) 99.7 (51.02-2.35)	Depositor EDS
R_{merge}	0.12	Depositor
R_{sym}	(Not available)	Depositor
$\langle I/\sigma(I) \rangle$ ¹	3.41 (at 2.34Å)	Xtrriage
Refinement program	CNS 1.2	Depositor
R, R_{free}	0.226 , 0.252 0.224 , 0.254	Depositor DCC
R_{free} test set	2671 reflections (4.99%)	wwPDB-VP
Wilson B-factor (Å ²)	33.6	Xtrriage
Anisotropy	0.722	Xtrriage
Bulk solvent k_{sol} (e/Å ³), B_{sol} (Å ²)	0.36 , 54.2	EDS
L-test for twinning ²	$\langle L \rangle = 0.49$, $\langle L^2 \rangle = 0.33$	Xtrriage
Estimated twinning fraction	No twinning to report.	Xtrriage
F_o, F_c correlation	0.93	EDS
Total number of atoms	4187	wwPDB-VP
Average B, all atoms (Å ²)	40.0	wwPDB-VP

Xtrriage's analysis on translational NCS is as follows: *The largest off-origin peak in the Patterson function is 5.53% of the height of the origin peak. No significant pseudotranslation is detected.*

¹Intensities estimated from amplitudes.

²Theoretical values of $\langle |L| \rangle$, $\langle L^2 \rangle$ for acentric reflections are 0.5, 0.333 respectively for untwinned datasets, and 0.375, 0.2 for perfectly twinned datasets.

5 Model quality

5.1 Standard geometry

Bond lengths and bond angles in the following residue types are not validated in this section: 6OB, 6OC

The Z score for a bond length (or angle) is the number of standard deviations the observed value is removed from the expected value. A bond length (or angle) with $|Z| > 5$ is considered an outlier worth inspection. RMSZ is the root-mean-square of all Z scores of the bond lengths (or angles).

Mol	Chain	Bond lengths		Bond angles	
		RMSZ	# Z >5	RMSZ	# Z >5
1	A	0.36	0/2061	0.57	0/2778
2	B	0.35	0/2004	0.55	0/2696
All	All	0.36	0/4065	0.56	0/5474

There are no bond length outliers.

There are no bond angle outliers.

There are no chirality outliers.

There are no planarity outliers.

5.2 Too-close contacts

In the following table, the Non-H and H(model) columns list the number of non-hydrogen atoms and hydrogen atoms in the chain respectively. The H(added) column lists the number of hydrogen atoms added and optimized by MolProbity. The Clashes column lists the number of clashes within the asymmetric unit, whereas Symm-Clashes lists symmetry related clashes.

Mol	Chain	Non-H	H(model)	H(added)	Clashes	Symm-Clashes
1	A	2028	0	2069	65	0
2	B	1973	0	2033	33	0
3	A	21	0	27	11	0
4	B	21	0	27	2	0
5	A	74	0	0	4	0
5	B	70	0	0	1	0
All	All	4187	0	4156	99	0

The all-atom clashscore is defined as the number of clashes found per 1000 atoms (including hydrogen atoms). The all-atom clashscore for this structure is 12.

All (99) close contacts within the same asymmetric unit are listed below, sorted by their clash

magnitude.

Atom-1	Atom-2	Interatomic distance (Å)	Clash overlap (Å)
1:A:342:SER:H	3:A:1476:6OC:H151	1.19	1.04
1:A:342:SER:N	3:A:1476:6OC:H151	1.89	0.86
1:A:342:SER:N	3:A:1476:6OC:H171	1.91	0.85
1:A:342:SER:H	3:A:1476:6OC:H171	1.36	0.85
1:A:334:MET:HG2	1:A:339:VAL:HG13	1.61	0.82
1:A:279:ILE:HD11	1:A:357:ARG:NH1	1.96	0.80
2:B:447:THR:O	2:B:450:VAL:HG22	1.91	0.70
1:A:342:SER:H	3:A:1476:6OC:C15	2.00	0.69
1:A:335:ASN:HD22	1:A:335:ASN:C	1.97	0.67
1:A:404:LYS:HB3	1:A:405:PRO:HD3	1.76	0.67
2:B:325:ILE:HD11	2:B:392:ILE:HG13	1.77	0.66
1:A:474:LYS:HB3	1:A:474:LYS:NZ	2.12	0.65
2:B:393:LEU:HD22	2:B:409:ILE:CG2	2.28	0.64
1:A:465:LEU:N	1:A:465:LEU:HD12	2.13	0.63
1:A:277:VAL:O	1:A:281:ILE:HD13	1.98	0.62
1:A:349:THR:HG22	1:A:351:GLU:H	1.65	0.62
1:A:363:PHE:CE1	1:A:452:LEU:HB3	2.37	0.60
1:A:349:THR:HG22	1:A:351:GLU:N	2.18	0.59
1:A:279:ILE:HD12	1:A:279:ILE:N	2.18	0.59
1:A:439:MET:HE1	5:A:2057:HOH:O	2.04	0.58
1:A:252:MET:HE2	1:A:277:VAL:HG21	1.85	0.58
1:A:340:LEU:HG	1:A:344:GLY:HA2	1.86	0.57
1:A:279:ILE:HD12	1:A:279:ILE:H	1.70	0.57
1:A:342:SER:H	3:A:1476:6OC:C17	2.12	0.56
2:B:275:LYS:HB3	2:B:279:ILE:HD12	1.87	0.56
1:A:360:PHE:HA	1:A:363:PHE:CD2	2.41	0.56
2:B:239:GLY:O	2:B:241:THR:N	2.41	0.55
1:A:433:ALA:O	1:A:437:GLN:HG3	2.08	0.54
1:A:456:ILE:HG21	1:A:463:MET:HE1	1.89	0.54
2:B:471:GLU:OE1	2:B:474:LYS:HD2	2.08	0.54
1:A:339:VAL:HG22	1:A:368:PHE:CZ	2.44	0.53
1:A:290:VAL:HG12	1:A:294:GLN:HE22	1.73	0.53
2:B:316:THR:HG21	2:B:400:LEU:HD13	1.91	0.53
1:A:360:PHE:HA	1:A:363:PHE:HD2	1.72	0.53
2:B:474:LYS:NZ	2:B:474:LYS:HB3	2.24	0.52
1:A:279:ILE:HD11	1:A:357:ARG:HH12	1.73	0.52
1:A:335:ASN:ND2	1:A:337:ASP:H	2.09	0.51
2:B:281:ILE:HD13	2:B:348:MET:CE	2.41	0.51
1:A:357:ARG:HH11	1:A:360:PHE:HE2	1.57	0.51
1:A:339:VAL:HG22	1:A:368:PHE:HZ	1.76	0.51
1:A:212:ARG:HD3	1:A:419:LEU:HD13	1.92	0.51

Continued on next page...

Continued from previous page...

Atom-1	Atom-2	Interatomic distance (Å)	Clash overlap (Å)
1:A:442:LEU:O	1:A:445:ILE:HG12	2.10	0.51
1:A:421:LEU:HD23	1:A:432:PHE:HA	1.92	0.50
2:B:403:VAL:HG23	2:B:407:GLU:HG3	1.94	0.50
1:A:342:SER:CA	3:A:1476:6OC:H171	2.42	0.49
2:B:253:GLN:NE2	2:B:253:GLN:HA	2.27	0.49
1:A:348:MET:CE	1:A:353:LEU:HD21	2.42	0.49
2:B:451:GLN:O	2:B:454:GLN:HG2	2.12	0.49
1:A:447:THR:O	1:A:450:VAL:HG22	2.12	0.49
1:A:453:LEU:O	1:A:457:LYS:HG3	2.13	0.49
1:A:216:LYS:HG3	5:A:2003:HOH:O	2.13	0.48
2:B:441:ASP:O	2:B:445:ILE:HG12	2.14	0.48
1:A:325:ILE:HD11	1:A:392:ILE:CG1	2.44	0.47
2:B:228:LEU:HD12	2:B:232:LYS:HG2	1.96	0.47
2:B:234:ARG:HD2	5:B:2005:HOH:O	2.13	0.47
1:A:305:GLY:HA2	1:A:308:ASN:HD22	1.79	0.47
1:A:290:VAL:HG12	1:A:294:GLN:NE2	2.30	0.47
1:A:290:VAL:HG21	1:A:466:HIS:CD2	2.51	0.46
1:A:393:LEU:O	1:A:410:GLN:HB2	2.15	0.46
2:B:216:LYS:NZ	2:B:220:ASP:OD1	2.48	0.46
1:A:335:ASN:ND2	1:A:335:ASN:C	2.68	0.45
1:A:440:THR:HG21	2:B:443:ARG:HD2	1.99	0.45
1:A:349:THR:HG23	5:A:2042:HOH:O	2.16	0.44
1:A:325:ILE:HD11	1:A:392:ILE:HG13	1.99	0.44
1:A:359:PRO:HG2	1:A:456:ILE:HD11	1.98	0.44
2:B:403:VAL:O	2:B:403:VAL:HG23	2.17	0.44
2:B:277:VAL:HG23	2:B:278:ALA:N	2.33	0.44
2:B:325:ILE:HD11	2:B:392:ILE:CG1	2.46	0.44
2:B:280:ARG:HH21	2:B:280:ARG:HB2	1.82	0.44
1:A:290:VAL:HG22	1:A:469:LEU:HD13	2.01	0.43
2:B:279:ILE:O	2:B:283:GLN:HG3	2.19	0.43
2:B:277:VAL:O	2:B:281:ILE:HG13	2.17	0.43
2:B:232:LYS:HE2	2:B:236:ILE:HD11	1.99	0.43
1:A:307:VAL:HG22	5:A:2025:HOH:O	2.18	0.43
2:B:400:LEU:HA	2:B:400:LEU:HD12	1.84	0.43
1:A:252:MET:CE	1:A:277:VAL:HG21	2.48	0.42
1:A:289:SER:OG	3:A:1476:6OC:H2C1	2.19	0.42
1:A:364:MET:SD	3:A:1476:6OC:H7C1	2.60	0.42
2:B:358:LYS:HG2	2:B:359:PRO:N	2.34	0.42
1:A:443:ARG:O	1:A:446:VAL:HG12	2.20	0.42
2:B:348:MET:HE3	2:B:352:PHE:HE2	1.84	0.42
2:B:365:GLU:N	2:B:366:PRO:HD2	2.35	0.42

Continued on next page...

Continued from previous page...

Atom-1	Atom-2	Interatomic distance (Å)	Clash overlap (Å)
1:A:335:ASN:ND2	1:A:338:GLY:H	2.18	0.42
1:A:474:LYS:HB3	1:A:474:LYS:HZ2	1.84	0.42
2:B:330:LEU:HD13	4:B:1475:6OB:HB1	2.01	0.42
1:A:365:GLU:HB2	1:A:366:PRO:HD3	2.01	0.41
1:A:456:ILE:HG21	1:A:463:MET:CE	2.49	0.41
1:A:279:ILE:H	1:A:279:ILE:CD1	2.32	0.41
3:A:1476:6OC:H141	3:A:1476:6OC:H112	1.72	0.41
1:A:327:TYR:HE1	3:A:1476:6OC:H4C2	1.86	0.41
1:A:466:HIS:HA	1:A:467:PRO:HD3	1.84	0.41
2:B:253:GLN:HE21	2:B:253:GLN:CA	2.34	0.41
1:A:359:PRO:HG2	1:A:456:ILE:CD1	2.50	0.41
2:B:281:ILE:HD13	2:B:348:MET:HE1	2.02	0.41
2:B:310:ASP:OD2	2:B:312:ASN:HB2	2.20	0.41
1:A:465:LEU:N	1:A:465:LEU:CD1	2.84	0.41
4:B:1475:6OB:H112	4:B:1475:6OB:H141	1.75	0.41
1:A:242:THR:HG23	1:A:243:ASP:N	2.36	0.40
2:B:253:GLN:NE2	2:B:253:GLN:CA	2.84	0.40

There are no symmetry-related clashes.

5.3 Torsion angles [i](#)

5.3.1 Protein backbone [i](#)

In the following table, the Percentiles column shows the percent Ramachandran outliers of the chain as a percentile score with respect to all X-ray entries followed by that with respect to entries of similar resolution.

The Analysed column shows the number of residues for which the backbone conformation was analysed, and the total number of residues.

Mol	Chain	Analysed	Favoured	Allowed	Outliers	Percentiles	
1	A	248/276 (90%)	246 (99%)	2 (1%)	0	100	100
2	B	239/276 (87%)	235 (98%)	4 (2%)	0	100	100
All	All	487/552 (88%)	481 (99%)	6 (1%)	0	100	100

There are no Ramachandran outliers to report.

5.3.2 Protein sidechains [i](#)

In the following table, the Percentiles column shows the percent sidechain outliers of the chain as a percentile score with respect to all X-ray entries followed by that with respect to entries of similar resolution.

The Analysed column shows the number of residues for which the sidechain conformation was analysed, and the total number of residues.

Mol	Chain	Analysed	Rotameric	Outliers	Percentiles	
1	A	227/247 (92%)	215 (95%)	12 (5%)	22	26
2	B	220/247 (89%)	210 (96%)	10 (4%)	27	33
All	All	447/494 (90%)	425 (95%)	22 (5%)	25	29

All (22) residues with a non-rotameric sidechain are listed below:

Mol	Chain	Res	Type
1	A	237	LEU
1	A	256	MET
1	A	257	MET
1	A	309	LEU
1	A	335	ASN
1	A	339	VAL
1	A	340	LEU
1	A	393	LEU
1	A	419	LEU
1	A	421	LEU
1	A	443	ARG
1	A	465	LEU
2	B	214	LEU
2	B	318	LEU
2	B	363	PHE
2	B	379	LEU
2	B	400	LEU
2	B	401	LEU
2	B	403	VAL
2	B	417	LEU
2	B	444	GLN
2	B	471	GLU

Some sidechains can be flipped to improve hydrogen bonding and reduce clashes. All (16) such sidechains are listed below:

Mol	Chain	Res	Type
1	A	253	ASN
1	A	286	GLN
1	A	294	GLN
1	A	308	ASN
1	A	314	GLN
1	A	335	ASN
1	A	345	GLN
1	A	402	ASN
1	A	444	GLN
1	A	451	GLN
2	B	253	GLN
2	B	283	GLN
2	B	412	ASN
2	B	449	HIS
2	B	454	GLN
2	B	470	GLN

5.3.3 RNA [i](#)

There are no RNA molecules in this entry.

5.4 Non-standard residues in protein, DNA, RNA chains [i](#)

There are no non-standard protein/DNA/RNA residues in this entry.

5.5 Carbohydrates [i](#)

There are no carbohydrates in this entry.

5.6 Ligand geometry [i](#)

2 ligands are modelled in this entry.

In the following table, the Counts columns list the number of bonds (or angles) for which Mogul statistics could be retrieved, the number of bonds (or angles) that are observed in the model and the number of bonds (or angles) that are defined in the Chemical Component Dictionary. The Link column lists molecule types, if any, to which the group is linked. The Z score for a bond length (or angle) is the number of standard deviations the observed value is removed from the expected value. A bond length (or angle) with $|Z| > 2$ is considered an outlier worth inspection. RMSZ is the root-mean-square of all Z scores of the bond lengths (or angles).

Mol	Type	Chain	Res	Link	Bond lengths			Bond angles		
					Counts	RMSZ	# Z > 2	Counts	RMSZ	# Z > 2
4	6OB	B	1475	2	16,20,21	0.25	0	17,21,23	0.97	2 (11%)
3	6OC	A	1476	1	17,20,21	0.23	0	17,21,23	1.16	1 (5%)

In the following table, the Chirals column lists the number of chiral outliers, the number of chiral centers analysed, the number of these observed in the model and the number defined in the Chemical Component Dictionary. Similar counts are reported in the Torsion and Rings columns. '-' means no outliers of that kind were identified.

Mol	Type	Chain	Res	Link	Chirals	Torsions	Rings
4	6OB	B	1475	2	-	7/17/19/21	-
3	6OC	A	1476	1	-	5/17/19/21	-

There are no bond length outliers.

All (3) bond angle outliers are listed below:

Mol	Chain	Res	Type	Atoms	Z	Observed(°)	Ideal(°)
3	A	1476	6OC	C8-C7-C6	-3.34	109.44	113.64
4	B	1475	6OB	C7-C8-C9	-2.15	120.00	125.03
4	B	1475	6OB	C4-C5-C6	-2.00	109.45	114.60

There are no chirality outliers.

All (12) torsion outliers are listed below:

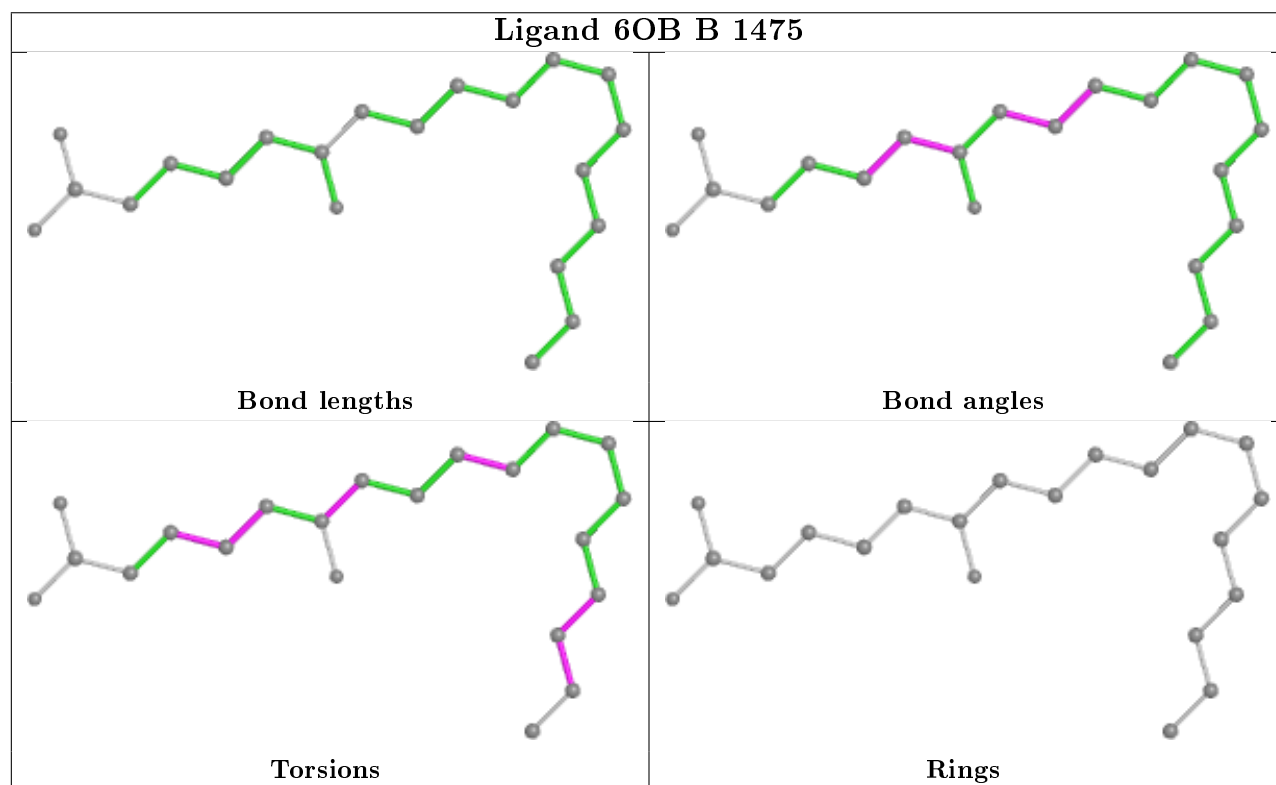
Mol	Chain	Res	Type	Atoms
3	A	1476	6OC	C1-C2-C3-C4
4	B	1475	6OB	C14-C15-C16-C17
4	B	1475	6OB	C3-C4-C5-C6
3	A	1476	6OC	C14-C15-C16-C17
3	A	1476	6OC	C15-C16-C17-C18
4	B	1475	6OB	O3-C6-C7-C8
3	A	1476	6OC	C5-C6-C7-C8
3	A	1476	6OC	O3-C6-C7-C8
4	B	1475	6OB	C5-C6-C7-C8
4	B	1475	6OB	C15-C16-C17-C18
4	B	1475	6OB	C11-C10-C9-C8
4	B	1475	6OB	C2-C3-C4-C5

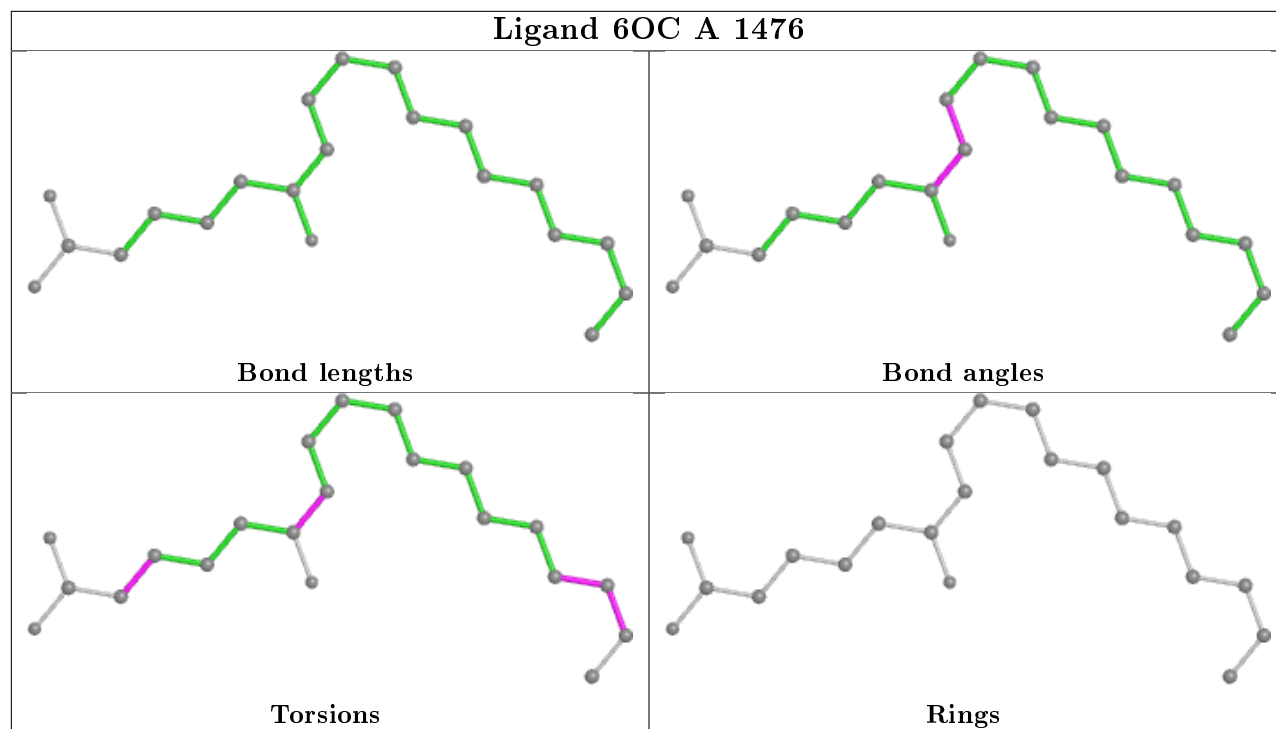
There are no ring outliers.

2 monomers are involved in 13 short contacts:

Mol	Chain	Res	Type	Clashes	Symm-Clashes
4	B	1475	6OB	2	0
3	A	1476	6OC	11	0

The following is a two-dimensional graphical depiction of Mogul quality analysis of bond lengths, bond angles, torsion angles, and ring geometry for all instances of the Ligand of Interest. In addition, ligands with molecular weight > 250 and outliers as shown on the validation Tables will also be included. For torsion angles, if less than 5% of the Mogul distribution of torsion angles is within 10 degrees of the torsion angle in question, then that torsion angle is considered an outlier. Any bond that is central to one or more torsion angles identified as an outlier by Mogul will be highlighted in the graph. For rings, the root-mean-square deviation (RMSD) between the ring in question and similar rings identified by Mogul is calculated over all ring torsion angles. If the average RMSD is greater than 60 degrees and the minimal RMSD between the ring in question and any Mogul-identified rings is also greater than 60 degrees, then that ring is considered an outlier. The outliers are highlighted in purple. The color gray indicates Mogul did not find sufficient equivalents in the CSD to analyse the geometry.





5.7 Other polymers [i](#)

There are no such residues in this entry.

5.8 Polymer linkage issues [i](#)

There are no chain breaks in this entry.

6 Fit of model and data

6.1 Protein, DNA and RNA chains

In the following table, the column labelled ‘#RSRZ> 2’ contains the number (and percentage) of RSRZ outliers, followed by percent RSRZ outliers for the chain as percentile scores relative to all X-ray entries and entries of similar resolution. The OWAB column contains the minimum, median, 95th percentile and maximum values of the occupancy-weighted average B-factor per residue. The column labelled ‘Q< 0.9’ lists the number of (and percentage) of residues with an average occupancy less than 0.9.

Mol	Chain	Analysed	<RSRZ>	#RSRZ>2	OWAB(Å ²)	Q<0.9
1	A	254/276 (92%)	0.41	4 (1%) 72 80	18, 36, 62, 74	0
2	B	247/276 (89%)	0.66	25 (10%) 7 11	17, 35, 81, 89	0
All	All	501/552 (90%)	0.53	29 (5%) 23 33	17, 36, 73, 89	0

All (29) RSRZ outliers are listed below:

Mol	Chain	Res	Type	RSRZ
2	B	241	THR	8.6
2	B	242	THR	5.6
1	A	363	PHE	4.6
2	B	363	PHE	4.3
1	A	243	ASP	3.2
2	B	244	LYS	3.2
2	B	245	SER	3.1
2	B	206	PRO	3.1
2	B	252	MET	3.1
2	B	277	VAL	3.0
2	B	473	TYR	3.0
2	B	352	PHE	2.9
2	B	469	LEU	2.8
2	B	257	MET	2.7
2	B	243	ASP	2.7
2	B	238	THR	2.7
2	B	207	GLU	2.6
2	B	254	SER	2.6
1	A	256	MET	2.5
2	B	427	GLU	2.5
1	A	472	ILE	2.5
2	B	247	PHE	2.4
2	B	336	LYS	2.3
2	B	351	GLU	2.2

Continued on next page...

Continued from previous page...

Mol	Chain	Res	Type	RSRZ
2	B	456	ILE	2.2
2	B	280	ARG	2.1
2	B	354	LYS	2.1
2	B	422	LYS	2.1
2	B	239	GLY	2.0

6.2 Non-standard residues in protein, DNA, RNA chains [i](#)

There are no non-standard protein/DNA/RNA residues in this entry.

6.3 Carbohydrates [i](#)

There are no carbohydrates in this entry.

6.4 Ligands [i](#)

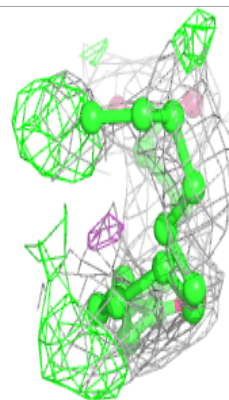
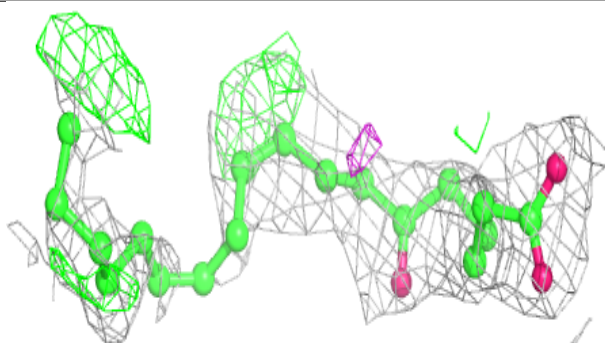
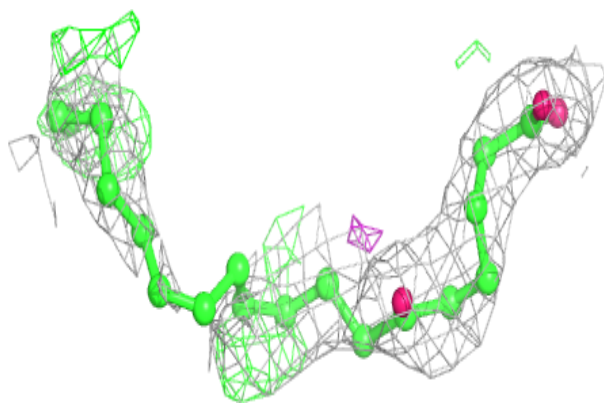
In the following table, the Atoms column lists the number of modelled atoms in the group and the number defined in the chemical component dictionary. The B-factors column lists the minimum, median, 95th percentile and maximum values of B factors of atoms in the group. The column labelled 'Q< 0.9' lists the number of atoms with occupancy less than 0.9.

Mol	Type	Chain	Res	Atoms	RSCC	RSR	B-factors(\AA^2)	Q<0.9
3	6OC	A	1476	21/22	0.62	0.28	69,74,77,77	0
4	6OB	B	1475	21/22	0.79	0.27	62,65,68,69	0

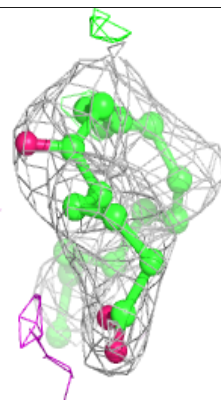
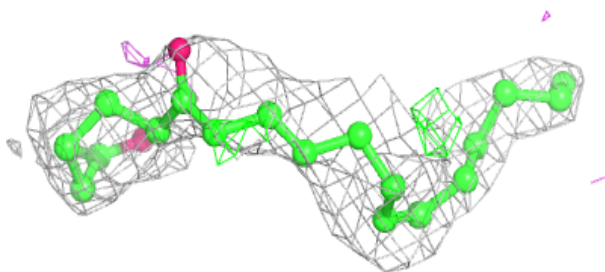
The following is a graphical depiction of the model fit to experimental electron density of all instances of the Ligand of Interest. In addition, ligands with molecular weight > 250 and outliers as shown on the geometry validation Tables will also be included. Each fit is shown from different orientation to approximate a three-dimensional view.

Electron density around 6OC A 1476:

$2mF_o-DF_c$ (at 0.7 rmsd) in gray
 mF_o-DF_c (at 3 rmsd) in purple (negative)
and green (positive)

**Electron density around 6OB B 1475:**

$2mF_o-DF_c$ (at 0.7 rmsd) in gray
 mF_o-DF_c (at 3 rmsd) in purple (negative)
and green (positive)



6.5 Other polymers

There are no such residues in this entry.