



# Full wwPDB X-ray Structure Validation Report ⓘ

Dec 2, 2024 – 08:04 PM EST

PDB ID : 8VV8  
Title : Crystal Structure of EHMT2 bound to EZM8266  
Authors : Cocozaki, A.; Farrow, N.A.  
Deposited on : 2024-01-30  
Resolution : 2.00 Å(reported)

This is a Full wwPDB X-ray Structure Validation Report for a publicly released PDB entry.

We welcome your comments at [validation@mail.wwpdb.org](mailto:validation@mail.wwpdb.org)

A user guide is available at

<https://www.wwpdb.org/validation/2017/XrayValidationReportHelp>

with specific help available everywhere you see the ⓘ symbol.

The types of validation reports are described at

<http://www.wwpdb.org/validation/2017/FAQs#types>.

---

The following versions of software and data (see [references ⓘ](#)) were used in the production of this report:

MolProbity : 4.02b-467  
Mogul : 2022.3.0, CSD as543be (2022)  
Xtriage (Phenix) : 1.21  
EDS : 3.0  
buster-report : 1.1.7 (2018)  
Percentile statistics : 20231227.v01 (using entries in the PDB archive December 27th 2023)  
CCP4 : 9.0.004 (Gargrove)  
Density-Fitness : 1.0.11  
Ideal geometry (proteins) : Engh & Huber (2001)  
Ideal geometry (DNA, RNA) : Parkinson et al. (1996)  
Validation Pipeline (wwPDB-VP) : 2.40

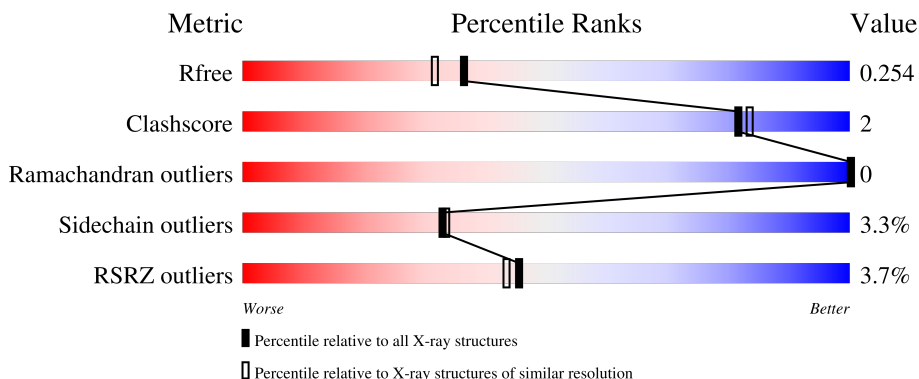
# 1 Overall quality at a glance

The following experimental techniques were used to determine the structure:

*X-RAY DIFFRACTION*

The reported resolution of this entry is 2.00 Å.

Percentile scores (ranging between 0-100) for global validation metrics of the entry are shown in the following graphic. The table shows the number of entries on which the scores are based.



Metric	Whole archive (#Entries)	Similar resolution (#Entries, resolution range(Å))
$R_{free}$	164625	9409 (2.00-2.00)
Clashscore	180529	10737 (2.00-2.00)
Ramachandran outliers	177936	10628 (2.00-2.00)
Sidechain outliers	177891	10627 (2.00-2.00)
RSRZ outliers	164620	9409 (2.00-2.00)

The table below summarises the geometric issues observed across the polymeric chains and their fit to the electron density. The red, orange, yellow and green segments of the lower bar indicate the fraction of residues that contain outliers for  $\geq 3$ , 2, 1 and 0 types of geometric quality criteria respectively. A grey segment represents the fraction of residues that are not modelled. The numeric value for each fraction is indicated below the corresponding segment, with a dot representing fractions  $\leq 5\%$ . The upper red bar (where present) indicates the fraction of residues that have poor fit to the electron density. The numeric value is given above the bar.

Mol	Chain	Length	Quality of chain
1	A	282	 4% 88% 7% . .
1	B	282	 3% 89% 6% . .

## 2 Entry composition [i](#)

There are 5 unique types of molecules in this entry. The entry contains 4789 atoms, of which 0 are hydrogens and 0 are deuteriums.

In the tables below, the ZeroOcc column contains the number of atoms modelled with zero occupancy, the AltConf column contains the number of residues with at least one atom in alternate conformation and the Trace column contains the number of residues modelled with at most 2 atoms.

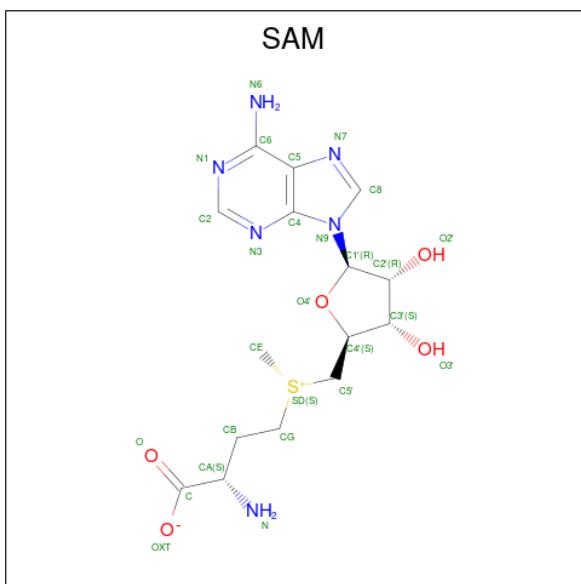
- Molecule 1 is a protein called Histone-lysine N-methyltransferase EHMT2.

Mol	Chain	Residues	Atoms					ZeroOcc	AltConf	Trace
			Total	C	N	O	S			
1	A	272	Total 2194	C 1367	N 386	O 418	S 23	0	0	0
1	B	273	Total 2208	C 1376	N 388	O 421	S 23	0	1	0

There are 2 discrepancies between the modelled and reference sequences:

Chain	Residue	Modelled	Actual	Comment	Reference
A	912	SER	-	expression tag	UNP Q96KQ7
B	912	SER	-	expression tag	UNP Q96KQ7

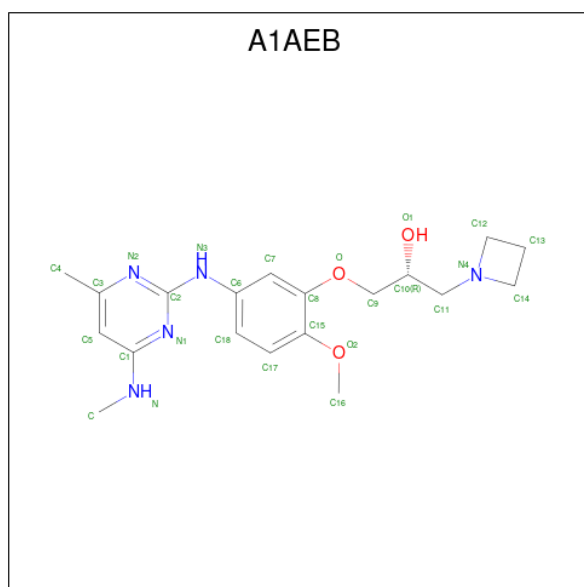
- Molecule 2 is S-ADENOSYLMETHIONINE (three-letter code: SAM) (formula: C<sub>15</sub>H<sub>22</sub>N<sub>6</sub>O<sub>5</sub>S).



Continued from previous page...

Mol	Chain	Residues	Atoms					ZeroOcc	AltConf
2	B	1	Total	C	N	O	S	0	0
			27	15	6	5	1		

- Molecule 3 is (2R)-1-(azetidin-1-yl)-3-(2-methoxy-5-{[4-methyl-6-(methylamino)pyrimidin-2-yl]amino}phenoxy)propan-2-ol (three-letter code: A1AEB) (formula: C<sub>19</sub>H<sub>27</sub>N<sub>5</sub>O<sub>3</sub>) (labeled as "Ligand of Interest" by depositor).



Mol	Chain	Residues	Atoms				ZeroOcc	AltConf
3	A	1	Total	C	N	O	0	0
			27	19	5	3		
3	B	1	Total	C	N	O	0	0
			27	19	5	3		

- Molecule 4 is ZINC ION (three-letter code: ZN) (formula: Zn).

Mol	Chain	Residues	Atoms		ZeroOcc	AltConf
4	A	4	Total	Zn	0	0
			4	4		
4	B	4	Total	Zn	0	0
			4	4		

- Molecule 5 is water.

Mol	Chain	Residues	Atoms		ZeroOcc	AltConf
5	A	142	Total	O	0	0
			142	142		

Continued on next page...

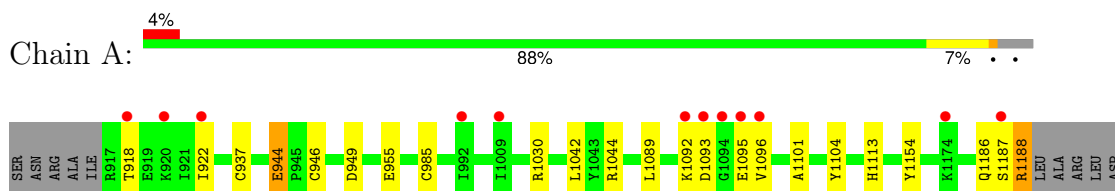
*Continued from previous page...*

<b>Mol</b>	<b>Chain</b>	<b>Residues</b>	<b>Atoms</b>		<b>ZeroOcc</b>	<b>AltConf</b>
5	B	129	Total 129	O 129	0	0

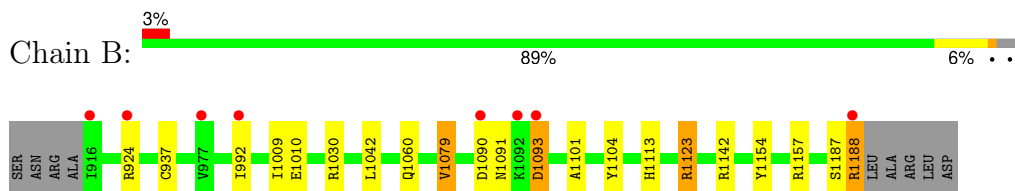
### 3 Residue-property plots [i](#)

These plots are drawn for all protein, RNA, DNA and oligosaccharide chains in the entry. The first graphic for a chain summarises the proportions of the various outlier classes displayed in the second graphic. The second graphic shows the sequence view annotated by issues in geometry and electron density. Residues are color-coded according to the number of geometric quality criteria for which they contain at least one outlier: green = 0, yellow = 1, orange = 2 and red = 3 or more. A red dot above a residue indicates a poor fit to the electron density ( $RSRZ > 2$ ). Stretches of 2 or more consecutive residues without any outlier are shown as a green connector. Residues present in the sample, but not in the model, are shown in grey.

- Molecule 1: Histone-lysine N-methyltransferase EHMT2



- Molecule 1: Histone-lysine N-methyltransferase EHMT2



## 4 Data and refinement statistics i

Property	Value	Source
Space group	P 1 21 1	Depositor
Cell constants a, b, c, $\alpha$ , $\beta$ , $\gamma$	56.61Å 78.25Å 73.28Å 90.00° 91.33° 90.00°	Depositor
Resolution (Å)	45.90 – 2.00 45.90 – 2.00	Depositor EDS
% Data completeness (in resolution range)	99.3 (45.90-2.00) 99.3 (45.90-2.00)	Depositor EDS
$R_{merge}$	(Not available)	Depositor
$R_{sym}$	(Not available)	Depositor
$\langle I/\sigma(I) \rangle$ <sup>1</sup>	4.02 (at 2.00Å)	Xtrriage
Refinement program	REFMAC 5.8.0415	Depositor
R, $R_{free}$	0.210 , 0.247 0.216 , 0.254	Depositor DCC
$R_{free}$ test set	2192 reflections (5.06%)	wwPDB-VP
Wilson B-factor (Å <sup>2</sup> )	27.7	Xtrriage
Anisotropy	0.042	Xtrriage
Bulk solvent $k_{sol}$ (e/Å <sup>3</sup> ), $B_{sol}$ (Å <sup>2</sup> )	0.34 , 33.0	EDS
L-test for twinning <sup>2</sup>	$\langle  L  \rangle = 0.49$ , $\langle L^2 \rangle = 0.32$	Xtrriage
Estimated twinning fraction	0.029 for h,-k,-l	Xtrriage
$F_o, F_c$ correlation	0.94	EDS
Total number of atoms	4789	wwPDB-VP
Average B, all atoms (Å <sup>2</sup> )	34.0	wwPDB-VP

Xtrriage's analysis on translational NCS is as follows: *The largest off-origin peak in the Patterson function is 17.64% of the height of the origin peak. No significant pseudotranslation is detected.*

<sup>1</sup>Intensities estimated from amplitudes.

<sup>2</sup>Theoretical values of  $\langle |L| \rangle$ ,  $\langle L^2 \rangle$  for acentric reflections are 0.5, 0.333 respectively for untwinned datasets, and 0.375, 0.2 for perfectly twinned datasets.

## 5 Model quality

### 5.1 Standard geometry

Bond lengths and bond angles in the following residue types are not validated in this section: SAM, ZN, A1AEB

The Z score for a bond length (or angle) is the number of standard deviations the observed value is removed from the expected value. A bond length (or angle) with  $|Z| > 5$  is considered an outlier worth inspection. RMSZ is the root-mean-square of all Z scores of the bond lengths (or angles).

Mol	Chain	Bond lengths		Bond angles	
		RMSZ	# Z  >5	RMSZ	# Z  >5
1	A	0.41	0/2240	0.69	0/3026
1	B	0.40	0/2254	0.69	0/3045
All	All	0.40	0/4494	0.69	0/6071

Chiral center outliers are detected by calculating the chiral volume of a chiral center and verifying if the center is modelled as a planar moiety or with the opposite hand. A planarity outlier is detected by checking planarity of atoms in a peptide group, atoms in a mainchain group or atoms of a sidechain that are expected to be planar.

Mol	Chain	#Chirality outliers	#Planarity outliers
1	A	0	1
1	B	0	3
All	All	0	4

There are no bond length outliers.

There are no bond angle outliers.

There are no chirality outliers.

All (4) planarity outliers are listed below:

Mol	Chain	Res	Type	Group
1	A	1030	ARG	Sidechain
1	B	1030	ARG	Sidechain
1	B	1090	ASP	Peptide
1	B	1142	ARG	Sidechain



## 5.2 Too-close contacts

In the following table, the Non-H and H(model) columns list the number of non-hydrogen atoms and hydrogen atoms in the chain respectively. The H(added) column lists the number of hydrogen atoms added and optimized by MolProbity. The Clashes column lists the number of clashes within the asymmetric unit, whereas Symm-Clashes lists symmetry-related clashes.

Mol	Chain	Non-H	H(model)	H(added)	Clashes	Symm-Clashes
1	A	2194	0	2090	9	0
1	B	2208	0	2105	12	0
2	A	27	0	22	0	0
2	B	27	0	22	0	0
3	A	27	0	0	0	0
3	B	27	0	0	0	0
4	A	4	0	0	0	0
4	B	4	0	0	0	0
5	A	142	0	0	2	0
5	B	129	0	0	4	0
All	All	4789	0	4239	21	0

The all-atom clashscore is defined as the number of clashes found per 1000 atoms (including hydrogen atoms). The all-atom clashscore for this structure is 2.

All (21) close contacts within the same asymmetric unit are listed below, sorted by their clash magnitude.

Atom-1	Atom-2	Interatomic distance (Å)	Clash overlap (Å)
1:B:1123:ARG:HD2	5:B:1414:HOH:O	1.97	0.62
1:B:1188:ARG:NH2	1:B:1188:ARG:HG3	2.13	0.61
1:B:1188:ARG:HG3	1:B:1188:ARG:HH21	1.71	0.55
1:B:1091:ASN:HB3	1:B:1093:ASP:O	2.09	0.52
1:B:1187:SER:O	1:B:1188:ARG:C	2.48	0.51
1:B:1060:GLN:HG2	5:B:1393:HOH:O	2.12	0.49
1:B:1101:ALA:HA	1:B:1104:TYR:O	2.13	0.49
1:A:1101:ALA:HA	1:A:1104:TYR:O	2.14	0.48
1:B:1009:ILE:HG22	1:B:1010:GLU:HG2	1.96	0.48
1:A:1187:SER:O	1:A:1188:ARG:HB2	2.16	0.45
1:A:922:ILE:CG2	1:A:946:CYS:HB2	2.47	0.45
1:A:949:ASP:HB2	5:A:1406:HOH:O	2.17	0.44
1:B:937:CYS:HA	1:B:1042:LEU:O	2.16	0.44
1:A:944:GLU:HG3	1:A:1044:ARG:CZ	2.48	0.44
1:B:924:ARG:HG2	5:B:1401:HOH:O	2.18	0.44
1:B:1113:HIS:HB2	1:B:1154:TYR:CG	2.54	0.43
1:A:1113:HIS:HB2	1:A:1154:TYR:CG	2.54	0.43

*Continued on next page...*

Continued from previous page...

Atom-1	Atom-2	Interatomic distance (Å)	Clash overlap (Å)
1:B:1079:VAL:HG11	5:B:1423:HOH:O	2.19	0.42
1:A:985:CYS:N	5:A:1311:HOH:O	2.52	0.42
1:A:937:CYS:HA	1:A:1042:LEU:O	2.20	0.42
1:A:944:GLU:CG	1:A:1044:ARG:NH2	2.83	0.41

There are no symmetry-related clashes.

## 5.3 Torsion angles [i](#)

### 5.3.1 Protein backbone [i](#)

In the following table, the Percentiles column shows the percent Ramachandran outliers of the chain as a percentile score with respect to all X-ray entries followed by that with respect to entries of similar resolution.

The Analysed column shows the number of residues for which the backbone conformation was analysed, and the total number of residues.

Mol	Chain	Analysed	Favoured	Allowed	Outliers	Percentiles	
1	A	270/282 (96%)	257 (95%)	13 (5%)	0	100	100
1	B	272/282 (96%)	260 (96%)	12 (4%)	0	100	100
All	All	542/564 (96%)	517 (95%)	25 (5%)	0	100	100

There are no Ramachandran outliers to report.

### 5.3.2 Protein sidechains [i](#)

In the following table, the Percentiles column shows the percent sidechain outliers of the chain as a percentile score with respect to all X-ray entries followed by that with respect to entries of similar resolution.

The Analysed column shows the number of residues for which the sidechain conformation was analysed, and the total number of residues.

Mol	Chain	Analysed	Rotameric	Outliers	Percentiles	
1	A	245/253 (97%)	235 (96%)	10 (4%)	26	25
1	B	247/253 (98%)	241 (98%)	6 (2%)	44	47
All	All	492/506 (97%)	476 (97%)	16 (3%)	33	33

All (16) residues with a non-rotameric sidechain are listed below:

Mol	Chain	Res	Type
1	A	918	THR
1	A	944	GLU
1	A	955	GLU
1	A	1089	LEU
1	A	1092	LYS
1	A	1093	ASP
1	A	1095	GLU
1	A	1096	VAL
1	A	1186	GLN
1	A	1188	ARG
1	B	992	ILE
1	B	1079	VAL
1	B	1093	ASP
1	B	1123	ARG
1	B	1157	ARG
1	B	1188	ARG

Sometimes sidechains can be flipped to improve hydrogen bonding and reduce clashes. There are no such sidechains identified.

### 5.3.3 RNA [i](#)

There are no RNA molecules in this entry.

## 5.4 Non-standard residues in protein, DNA, RNA chains [i](#)

There are no non-standard protein/DNA/RNA residues in this entry.

## 5.5 Carbohydrates [i](#)

There are no oligosaccharides in this entry.

## 5.6 Ligand geometry [i](#)

Of 12 ligands modelled in this entry, 8 are monoatomic - leaving 4 for Mogul analysis.

In the following table, the Counts columns list the number of bonds (or angles) for which Mogul statistics could be retrieved, the number of bonds (or angles) that are observed in the model and the number of bonds (or angles) that are defined in the Chemical Component Dictionary. The

Link column lists molecule types, if any, to which the group is linked. The Z score for a bond length (or angle) is the number of standard deviations the observed value is removed from the expected value. A bond length (or angle) with  $|Z| > 2$  is considered an outlier worth inspection. RMSZ is the root-mean-square of all Z scores of the bond lengths (or angles).

Mol	Type	Chain	Res	Link	Bond lengths			Bond angles		
					Counts	RMSZ	# Z  > 2	Counts	RMSZ	# Z  > 2
2	SAM	B	1201	-	23,29,29	0.62	0	20,42,42	0.79	1 (5%)
2	SAM	A	1201	-	23,29,29	0.70	0	20,42,42	1.00	2 (10%)
3	A1AEB	A	1202	-	27,29,29	1.40	3 (11%)	32,39,39	1.86	8 (25%)
3	A1AEB	B	1202	-	27,29,29	1.33	4 (14%)	32,39,39	1.79	9 (28%)

In the following table, the Chirals column lists the number of chiral outliers, the number of chiral centers analysed, the number of these observed in the model and the number defined in the Chemical Component Dictionary. Similar counts are reported in the Torsion and Rings columns. '-' means no outliers of that kind were identified.

Mol	Type	Chain	Res	Link	Chirals	Torsions	Rings
2	SAM	B	1201	-	-	3/13/33/33	0/3/3/3
2	SAM	A	1201	-	-	4/13/33/33	0/3/3/3
3	A1AEB	A	1202	-	-	1/15/23/23	0/3/3/3
3	A1AEB	B	1202	-	-	2/15/23/23	0/3/3/3

All (7) bond length outliers are listed below:

Mol	Chain	Res	Type	Atoms	Z	Observed(Å)	Ideal(Å)
3	A	1202	A1AEB	C4-C3	-5.07	1.39	1.50
3	B	1202	A1AEB	C4-C3	-3.76	1.41	1.50
3	B	1202	A1AEB	C-N	3.01	1.50	1.45
3	A	1202	A1AEB	C6-N3	-2.68	1.35	1.40
3	B	1202	A1AEB	C6-N3	-2.17	1.36	1.40
3	A	1202	A1AEB	C-N	2.09	1.48	1.45
3	B	1202	A1AEB	C11-C10	2.06	1.57	1.52

All (20) bond angle outliers are listed below:

Mol	Chain	Res	Type	Atoms	Z	Observed(°)	Ideal(°)
3	A	1202	A1AEB	C-N-C1	-4.67	118.64	122.96
3	A	1202	A1AEB	N2-C2-N1	-4.48	118.92	126.26
3	B	1202	A1AEB	N2-C2-N1	-4.38	119.08	126.26
3	B	1202	A1AEB	C-N-C1	-3.27	119.94	122.96
3	B	1202	A1AEB	C2-N2-C3	2.98	121.77	115.98
3	A	1202	A1AEB	C2-N2-C3	2.98	121.77	115.98

*Continued on next page...*

*Continued from previous page...*

Mol	Chain	Res	Type	Atoms	Z	Observed(°)	Ideal(°)
3	B	1202	A1AEB	C12-C13-C14	-2.92	85.09	88.69
3	B	1202	A1AEB	C4-C3-N2	2.77	120.75	116.56
3	A	1202	A1AEB	O-C9-C10	2.75	112.61	107.64
2	A	1201	SAM	C5-C6-N6	2.68	124.39	120.31
2	B	1201	SAM	C5-C6-N6	2.49	124.11	120.31
3	B	1202	A1AEB	N-C1-N1	2.44	122.29	116.36
3	A	1202	A1AEB	C4-C3-N2	2.41	120.19	116.56
3	A	1202	A1AEB	N3-C2-N1	2.38	125.09	116.90
3	A	1202	A1AEB	C11-C10-C9	2.37	116.87	111.59
2	A	1201	SAM	O4'-C1'-N9	2.18	111.64	108.75
3	B	1202	A1AEB	C5-C1-N1	-2.13	118.93	123.35
3	A	1202	A1AEB	C6-C7-C8	2.12	121.99	119.27
3	B	1202	A1AEB	C18-C6-N3	2.09	127.69	120.61
3	B	1202	A1AEB	O-C9-C10	2.05	111.34	107.64

There are no chirality outliers.

All (10) torsion outliers are listed below:

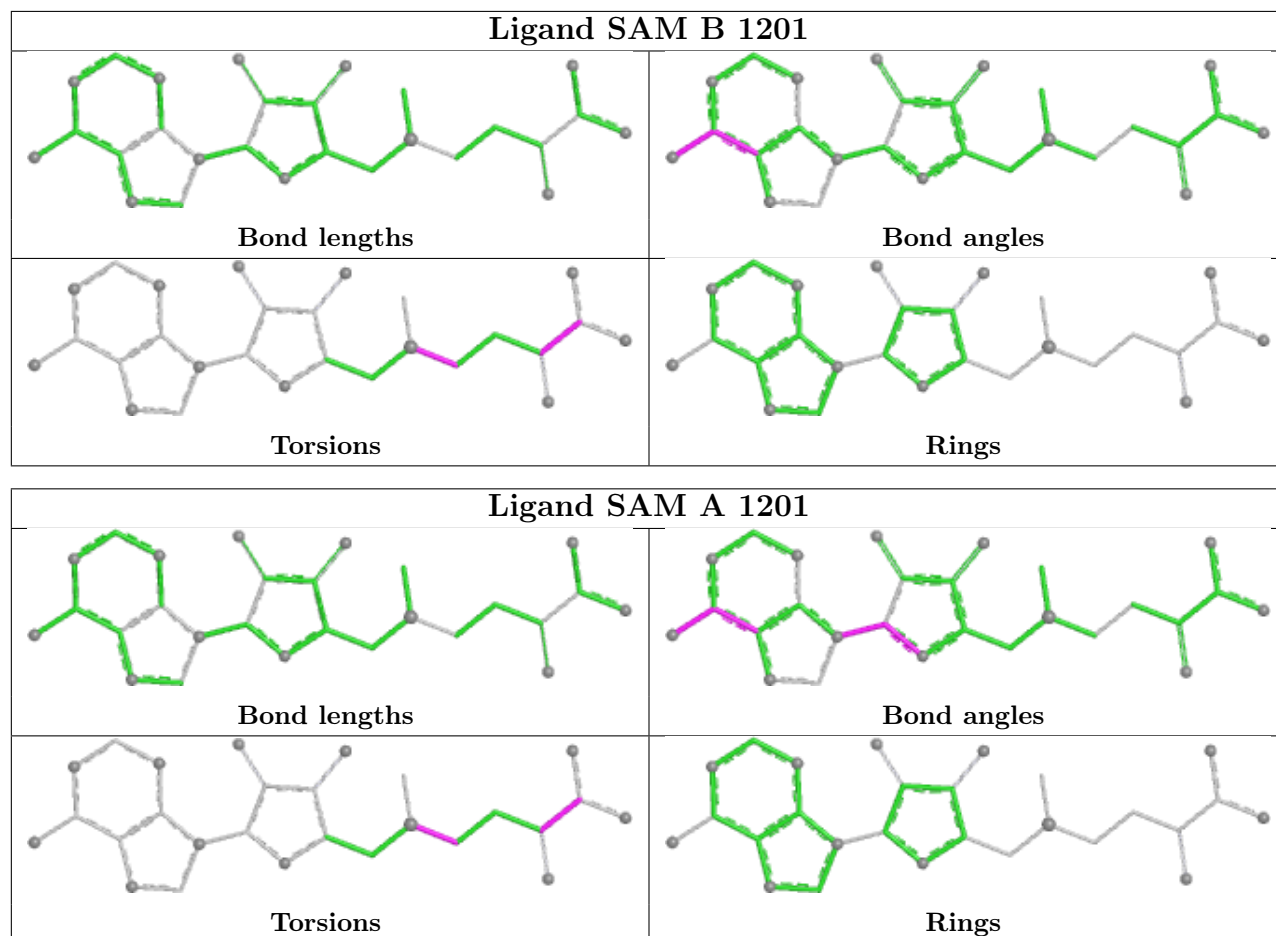
Mol	Chain	Res	Type	Atoms
2	A	1201	SAM	CB-CG-SD-CE
2	A	1201	SAM	CB-CG-SD-C5'
2	B	1201	SAM	CB-CG-SD-CE
2	B	1201	SAM	CB-CG-SD-C5'
3	A	1202	A1AEB	C11-C10-C9-O
3	B	1202	A1AEB	C11-C10-C9-O
2	A	1201	SAM	O-C-CA-CB
2	B	1201	SAM	O-C-CA-CB
3	B	1202	A1AEB	C9-C10-C11-N4
2	A	1201	SAM	OXT-C-CA-CB

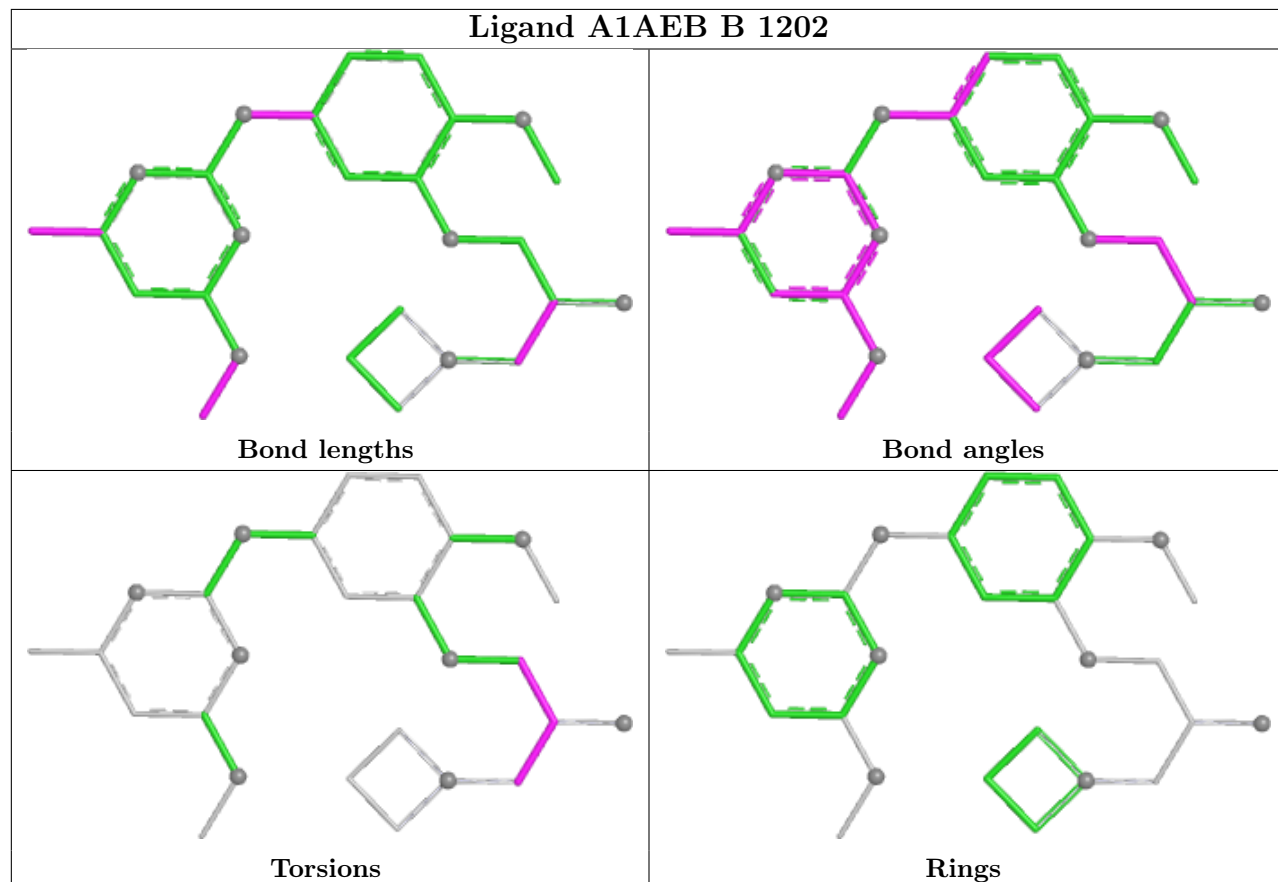
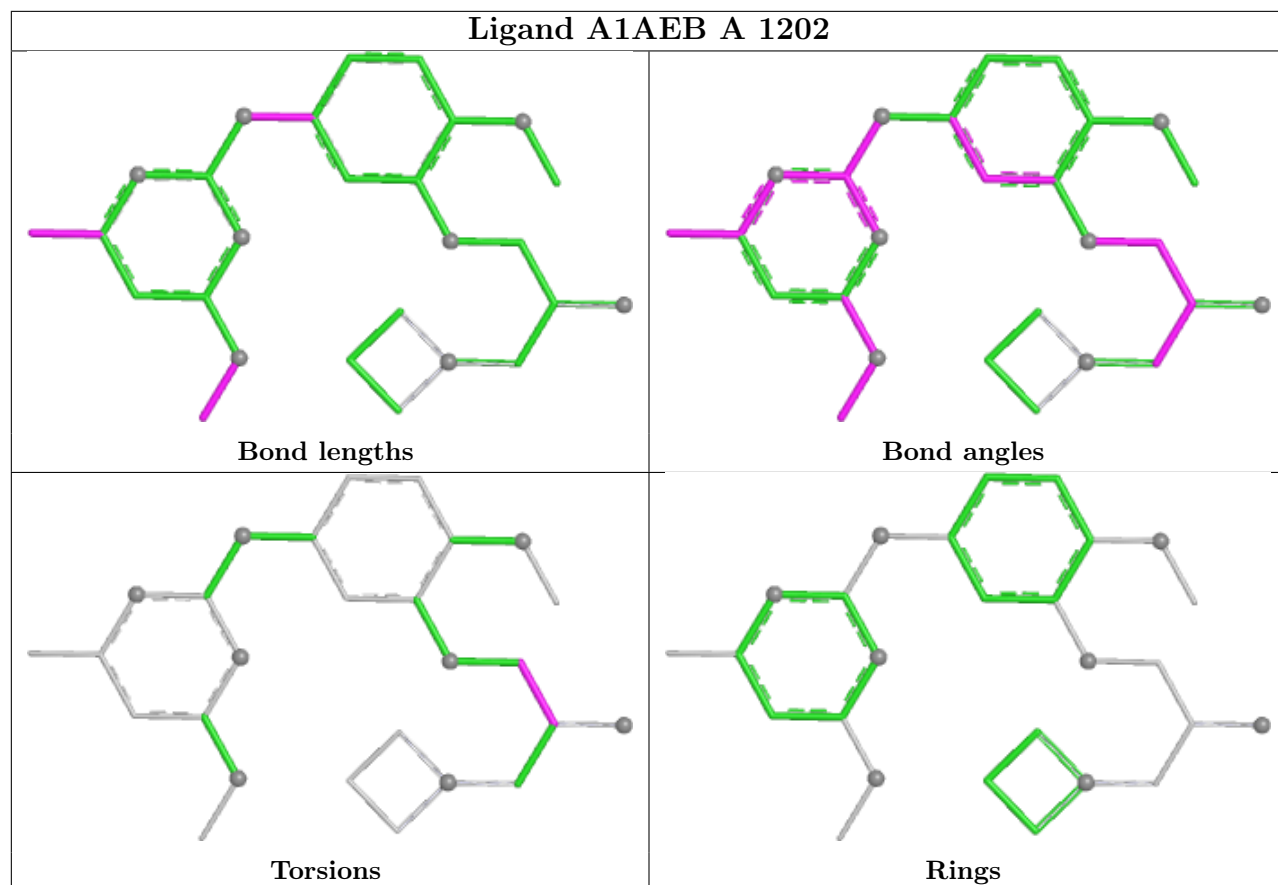
There are no ring outliers.

No monomer is involved in short contacts.

The following is a two-dimensional graphical depiction of Mogul quality analysis of bond lengths, bond angles, torsion angles, and ring geometry for all instances of the Ligand of Interest. In addition, ligands with molecular weight > 250 and outliers as shown on the validation Tables will also be included. For torsion angles, if less than 5% of the Mogul distribution of torsion angles is within 10 degrees of the torsion angle in question, then that torsion angle is considered an outlier. Any bond that is central to one or more torsion angles identified as an outlier by Mogul will be highlighted in the graph. For rings, the root-mean-square deviation (RMSD) between the ring in question and similar rings identified by Mogul is calculated over all ring torsion angles. If the average RMSD is greater than 60 degrees and the minimal RMSD between the ring in question and

any Mogul-identified rings is also greater than 60 degrees, then that ring is considered an outlier. The outliers are highlighted in purple. The color gray indicates Mogul did not find sufficient equivalents in the CSD to analyse the geometry.





## 5.7 Other polymers [i](#)

There are no such residues in this entry.

## 5.8 Polymer linkage issues [i](#)

There are no chain breaks in this entry.



## 6 Fit of model and data

### 6.1 Protein, DNA and RNA chains

In the following table, the column labelled ‘#RSRZ > 2’ contains the number (and percentage) of RSRZ outliers, followed by percent RSRZ outliers for the chain as percentile scores relative to all X-ray entries and entries of similar resolution. The OWAB column contains the minimum, median, 95<sup>th</sup> percentile and maximum values of the occupancy-weighted average B-factor per residue. The column labelled ‘Q < 0.9’ lists the number of (and percentage) of residues with an average occupancy less than 0.9.

Mol	Chain	Analysed	<RSRZ>	#RSRZ>2	OWAB(Å <sup>2</sup> )	Q<0.9
1	A	272/282 (96%)	0.12	12 (4%) 39 38	22, 31, 59, 120	0
1	B	273/282 (96%)	0.05	8 (2%) 54 52	12, 31, 58, 98	1 (0%)
All	All	545/564 (96%)	0.09	20 (3%) 45 43	12, 31, 58, 120	1 (0%)

All (20) RSRZ outliers are listed below:

Mol	Chain	Res	Type	RSRZ
1	B	916	ILE	4.9
1	A	1095	GLU	3.9
1	B	1092	LYS	3.8
1	A	1093	ASP	3.6
1	B	977	VAL	3.6
1	A	1094	GLY	3.5
1	A	1092	LYS	3.3
1	A	1174	LYS	3.2
1	A	922	ILE	3.2
1	A	920	LYS	3.0
1	B	1090	ASP	3.0
1	A	918	THR	2.7
1	A	992	ILE	2.7
1	A	1096	VAL	2.5
1	A	1009	ILE	2.4
1	A	1187	SER	2.3
1	B	992	ILE	2.3
1	B	1188	ARG	2.2
1	B	1093	ASP	2.1
1	B	924	ARG	2.1

## 6.2 Non-standard residues in protein, DNA, RNA chains [i](#)

There are no non-standard protein/DNA/RNA residues in this entry.

## 6.3 Carbohydrates [i](#)

There are no monosaccharides in this entry.

## 6.4 Ligands [i](#)

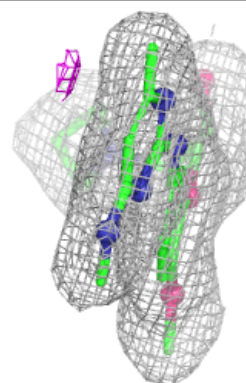
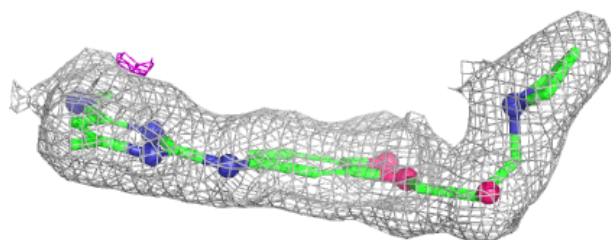
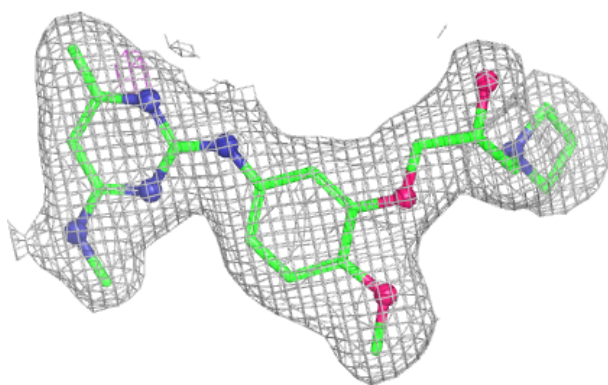
In the following table, the Atoms column lists the number of modelled atoms in the group and the number defined in the chemical component dictionary. The B-factors column lists the minimum, median, 95<sup>th</sup> percentile and maximum values of B factors of atoms in the group. The column labelled 'Q< 0.9' lists the number of atoms with occupancy less than 0.9.

Mol	Type	Chain	Res	Atoms	RSCC	RSR	B-factors( $\text{\AA}^2$ )	Q<0.9
3	A1AEB	A	1202	27/27	0.94	0.07	24,29,34,36	0
3	A1AEB	B	1202	27/27	0.94	0.07	24,30,34,38	0
2	SAM	A	1201	27/27	0.95	0.07	26,30,33,35	0
2	SAM	B	1201	27/27	0.95	0.07	23,28,32,35	0
4	ZN	A	1206	1/1	0.99	0.02	32,32,32,32	0
4	ZN	B	1203	1/1	0.99	0.02	29,29,29,29	0
4	ZN	B	1204	1/1	0.99	0.02	29,29,29,29	0
4	ZN	B	1205	1/1	0.99	0.02	32,32,32,32	0
4	ZN	A	1204	1/1	1.00	0.01	24,24,24,24	0
4	ZN	A	1205	1/1	1.00	0.02	25,25,25,25	0
4	ZN	A	1203	1/1	1.00	0.03	24,24,24,24	0
4	ZN	B	1206	1/1	1.00	0.02	30,30,30,30	0

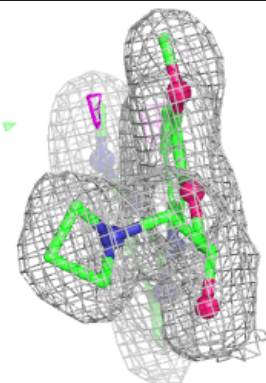
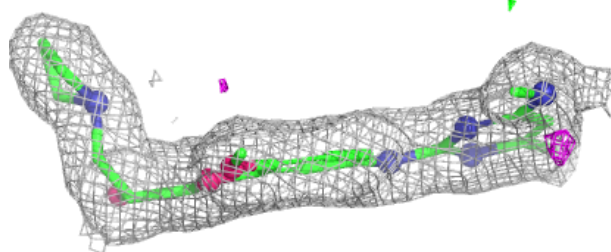
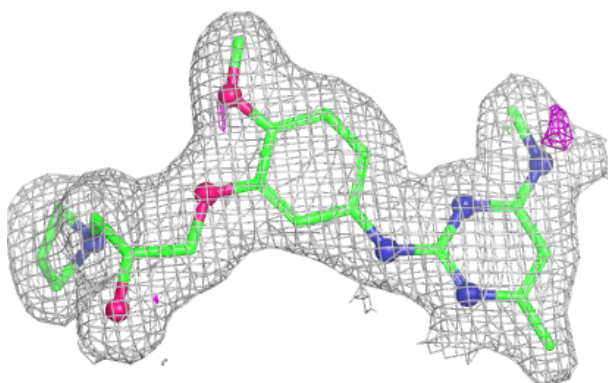
The following is a graphical depiction of the model fit to experimental electron density of all instances of the Ligand of Interest. In addition, ligands with molecular weight > 250 and outliers as shown on the geometry validation Tables will also be included. Each fit is shown from different orientation to approximate a three-dimensional view.

**Electron density around A1AEB A 1202:**

$2mF_o-DF_c$  (at 0.7 rmsd) in gray  
 $mF_o-DF_c$  (at 3 rmsd) in purple (negative)  
and green (positive)

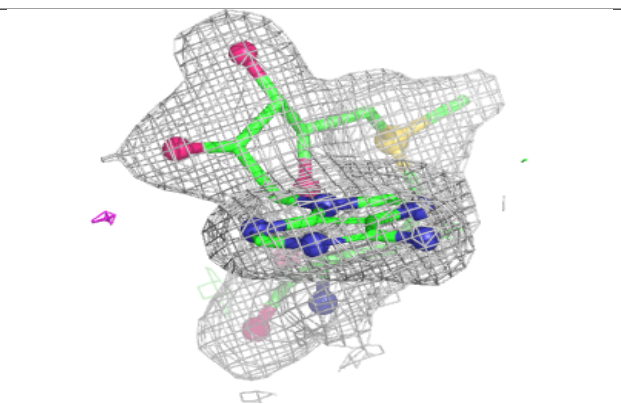
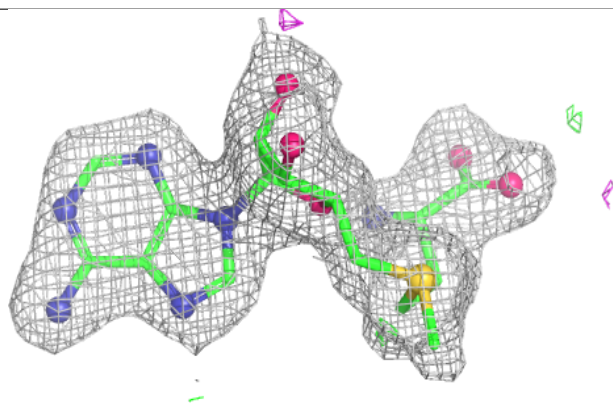
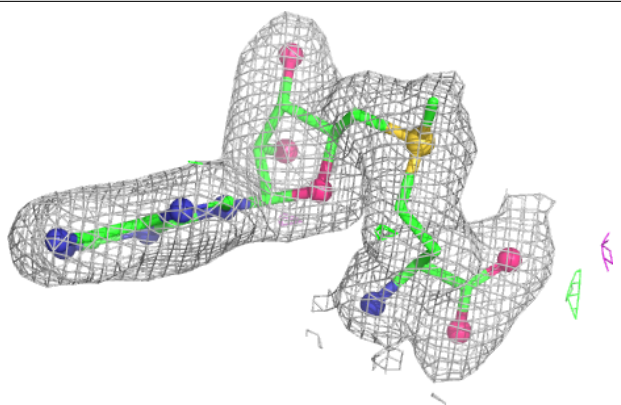
**Electron density around A1AEB B 1202:**

$2mF_o-DF_c$  (at 0.7 rmsd) in gray  
 $mF_o-DF_c$  (at 3 rmsd) in purple (negative)  
and green (positive)

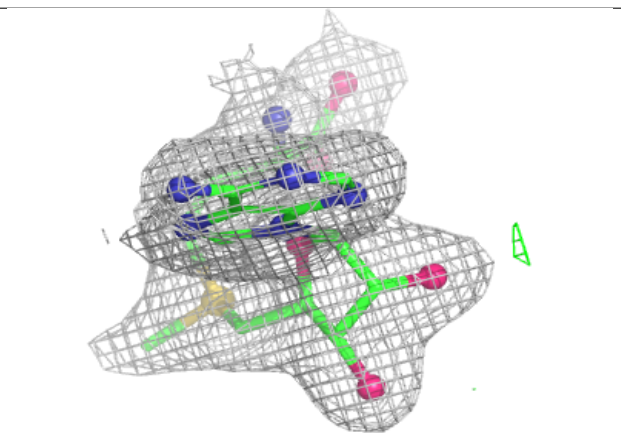
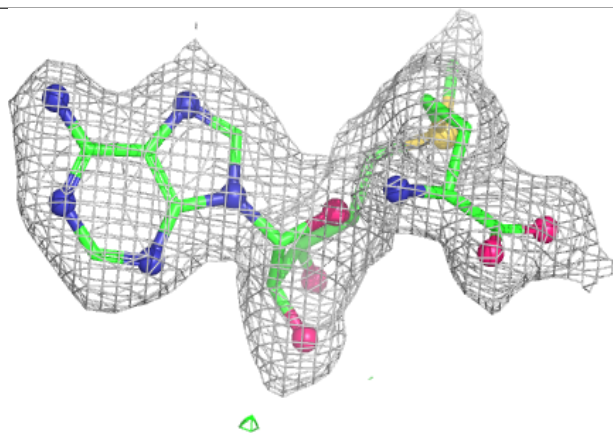
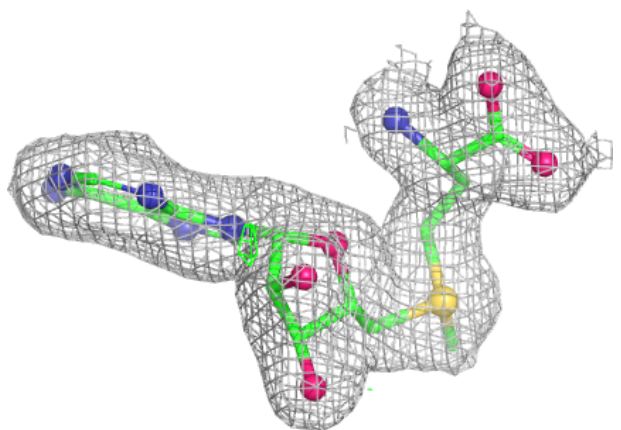


**Electron density around SAM A 1201:**

$2mF_o-DF_c$  (at 0.7 rmsd) in gray  
 $mF_o-DF_c$  (at 3 rmsd) in purple (negative)  
and green (positive)

**Electron density around SAM B 1201:**

$2mF_o-DF_c$  (at 0.7 rmsd) in gray  
 $mF_o-DF_c$  (at 3 rmsd) in purple (negative)  
and green (positive)



## 6.5 Other polymers [i](#)

There are no such residues in this entry.