



# Full wwPDB X-ray Structure Validation Report ⓘ

Mar 21, 2024 – 04:10 PM EDT

PDB ID : 8W0X  
Title : Crystal structure of broadly neutralizing antibody hcab40 in complex with Hepatitis C virus envelope glycoprotein E2 ectodomain  
Authors : Flyak, A.I.; Wilcox, X.E.  
Deposited on : 2024-02-14  
Resolution : 3.12 Å(reported)

This is a Full wwPDB X-ray Structure Validation Report for a publicly released PDB entry.

We welcome your comments at [validation@mail.wwpdb.org](mailto:validation@mail.wwpdb.org)

A user guide is available at

<https://www.wwpdb.org/validation/2017/XrayValidationReportHelp>

with specific help available everywhere you see the ⓘ symbol.

The types of validation reports are described at

<http://www.wwpdb.org/validation/2017/FAQs#types>.

---

The following versions of software and data (see [references ⓘ](#)) were used in the production of this report:

MolProbity : 4.02b-467  
Mogul : 1.8.5 (274361), CSD as541be (2020)  
Xtriage (Phenix) : 1.13  
EDS : 2.36.1  
Percentile statistics : 20191225.v01 (using entries in the PDB archive December 25th 2019)  
Refmac : 5.8.0158  
CCP4 : 7.0.044 (Gargrove)  
Ideal geometry (proteins) : Engh & Huber (2001)  
Ideal geometry (DNA, RNA) : Parkinson et al. (1996)  
Validation Pipeline (wwPDB-VP) : 2.36.1

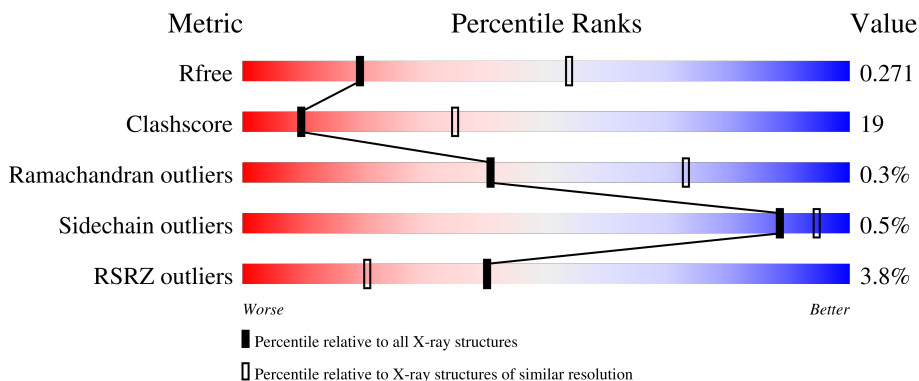
# 1 Overall quality at a glance

The following experimental techniques were used to determine the structure:

*X-RAY DIFFRACTION*

The reported resolution of this entry is 3.12 Å.

Percentile scores (ranging between 0-100) for global validation metrics of the entry are shown in the following graphic. The table shows the number of entries on which the scores are based.



Metric	Whole archive (#Entries)	Similar resolution (#Entries, resolution range(Å))
$R_{free}$	130704	1292 (3.14-3.10)
Clashscore	141614	1389 (3.14-3.10)
Ramachandran outliers	138981	1337 (3.14-3.10)
Sidechain outliers	138945	1337 (3.14-3.10)
RSRZ outliers	127900	1260 (3.14-3.10)

The table below summarises the geometric issues observed across the polymeric chains and their fit to the electron density. The red, orange, yellow and green segments of the lower bar indicate the fraction of residues that contain outliers for  $\geq 3$ , 2, 1 and 0 types of geometric quality criteria respectively. A grey segment represents the fraction of residues that are not modelled. The numeric value for each fraction is indicated below the corresponding segment, with a dot representing fractions  $\leq 5\%$ . The upper red bar (where present) indicates the fraction of residues that have poor fit to the electron density. The numeric value is given above the bar.

Mol	Chain	Length	Quality of chain
1	C	262	 2% 60% 27% 12%
2	H	241	 3% 46% 37% 17%
3	L	214	 5% 62% 34% .
4	A	2	 100%
4	B	2	 100%

*Continued on next page...*

*Continued from previous page...*

Mol	Chain	Length	Quality of chain
4	I	2	 100%
5	D	3	 100%
6	E	8	 100%
7	F	4	 75%
8	G	5	 20%

## 2 Entry composition [i](#)

There are 9 unique types of molecules in this entry. The entry contains 5284 atoms, of which 0 are hydrogens and 0 are deuteriums.

In the tables below, the ZeroOcc column contains the number of atoms modelled with zero occupancy, the AltConf column contains the number of residues with at least one atom in alternate conformation and the Trace column contains the number of residues modelled with at most 2 atoms.

- Molecule 1 is a protein called Envelope glycoprotein E2.

Mol	Chain	Residues	Atoms					ZeroOcc	AltConf	Trace
			Total	C	N	O	S			
1	C	230	1800	1141	317	323	19	0	0	0

- Molecule 2 is a protein called hcab40 Fab Heavy Chain.

Mol	Chain	Residues	Atoms					ZeroOcc	AltConf	Trace
			Total	C	N	O	S			
2	H	201	1530	982	249	294	5	0	0	0

- Molecule 3 is a protein called hcab40 Fab Light Chain.

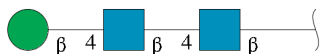
Mol	Chain	Residues	Atoms					ZeroOcc	AltConf	Trace
			Total	C	N	O	S			
3	L	206	1598	1007	265	320	6	0	0	0

- Molecule 4 is an oligosaccharide called 2-acetamido-2-deoxy-beta-D-glucopyranose-(1-4)-2-acetamido-2-deoxy-beta-D-glucopyranose.



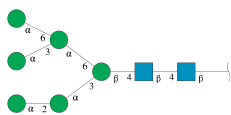
Mol	Chain	Residues	Atoms				ZeroOcc	AltConf	Trace
			Total	C	N	O			
4	A	2	28	16	2	10	0	0	0
4	B	2	28	16	2	10	0	0	0
4	I	2	28	16	2	10	0	0	0

- Molecule 5 is an oligosaccharide called beta-D-mannopyranose-(1-4)-2-acetamido-2-deoxy-beta-D-glucopyranose-(1-4)-2-acetamido-2-deoxy-beta-D-glucopyranose.



Mol	Chain	Residues	Atoms				ZeroOcc	AltConf	Trace
			Total	C	N	O			
5	D	3	39	22	2	15	0	0	0

- Molecule 6 is an oligosaccharide called alpha-D-mannopyranose-(1-2)-alpha-D-mannopyranose-(1-3)-[alpha-D-mannopyranose-(1-3)-[alpha-D-mannopyranose-(1-6)]alpha-D-mannopyranose-(1-6)]beta-D-mannopyranose-(1-4)-2-acetamido-2-deoxy-beta-D-glucopyranose-(1-4)-2-acetamido-2-deoxy-beta-D-glucopyranose.



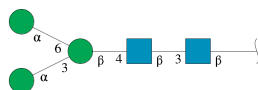
Mol	Chain	Residues	Atoms				ZeroOcc	AltConf	Trace
			Total	C	N	O			
6	E	8	94	52	2	40	0	0	0

- Molecule 7 is an oligosaccharide called alpha-D-mannopyranose-(1-3)-beta-D-mannopyranose-(1-4)-2-acetamido-2-deoxy-beta-D-glucopyranose-(1-4)-2-acetamido-2-deoxy-beta-D-glucopyranose.



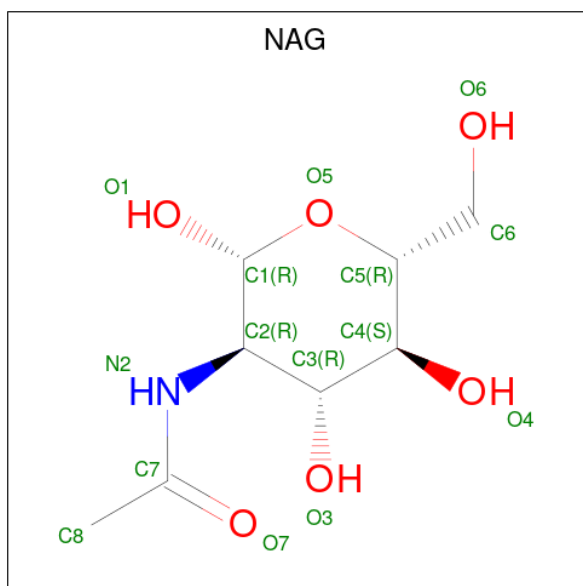
Mol	Chain	Residues	Atoms				ZeroOcc	AltConf	Trace
			Total	C	N	O			
7	F	4	50	28	2	20	0	0	0

- Molecule 8 is an oligosaccharide called alpha-D-mannopyranose-(1-3)-[alpha-D-mannopyranose-(1-6)]beta-D-mannopyranose-(1-4)-2-acetamido-2-deoxy-beta-D-glucopyranose-(1-3)-2-acetamido-2-deoxy-beta-D-glucopyranose.



Mol	Chain	Residues	Atoms				ZeroOcc	AltConf	Trace
			Total	C	N	O			
8	G	5	61	34	2	25	0	0	0

- Molecule 9 is 2-acetamido-2-deoxy-beta-D-glucopyranose (three-letter code: NAG) (formula:  $C_8H_{15}NO_6$ ).

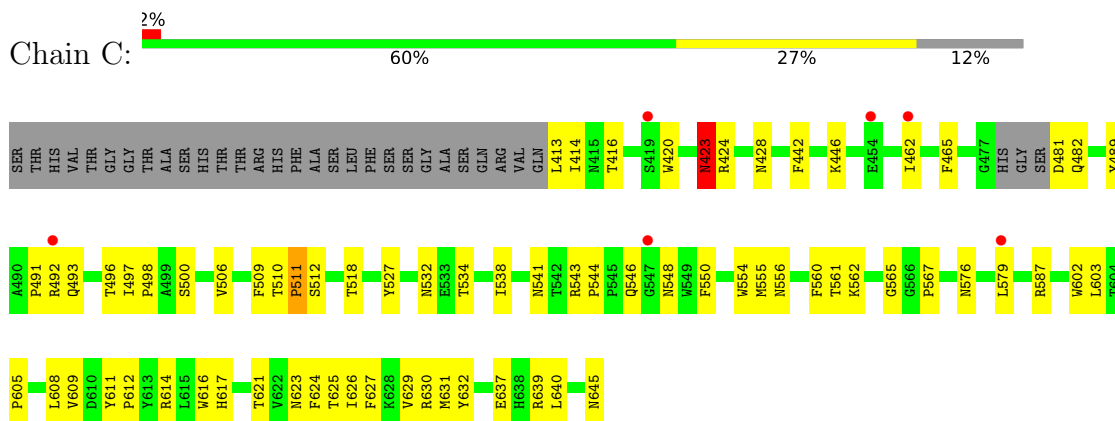


Mol	Chain	Residues	Atoms				ZeroOcc	AltConf
			Total	C	N	O		
9	C	1	14	8	1	5	0	0
9	C	1	14	8	1	5	0	0

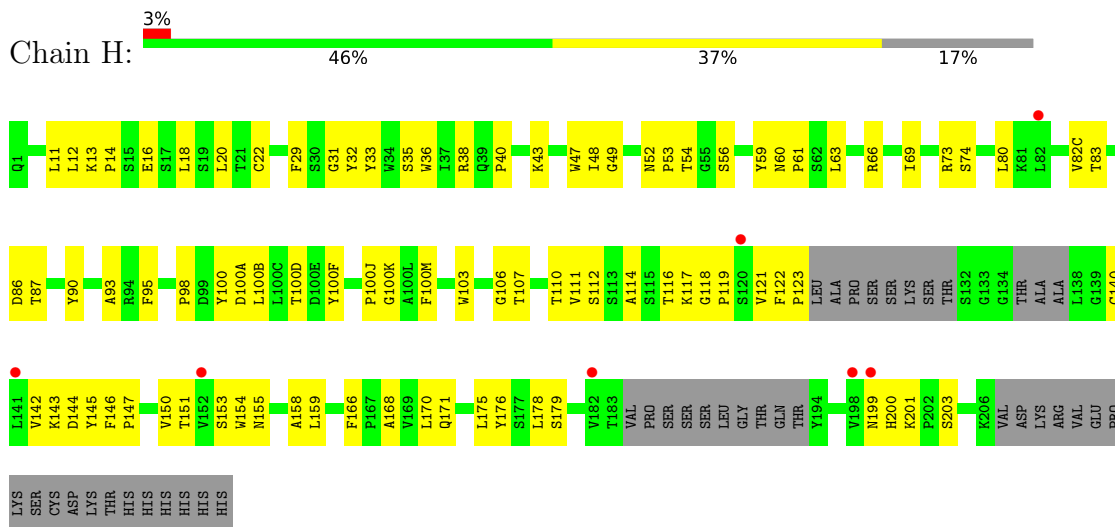
### 3 Residue-property plots [i](#)

These plots are drawn for all protein, RNA, DNA and oligosaccharide chains in the entry. The first graphic for a chain summarises the proportions of the various outlier classes displayed in the second graphic. The second graphic shows the sequence view annotated by issues in geometry and electron density. Residues are color-coded according to the number of geometric quality criteria for which they contain at least one outlier: green = 0, yellow = 1, orange = 2 and red = 3 or more. A red dot above a residue indicates a poor fit to the electron density ( $RSRZ > 2$ ). Stretches of 2 or more consecutive residues without any outlier are shown as a green connector. Residues present in the sample, but not in the model, are shown in grey.

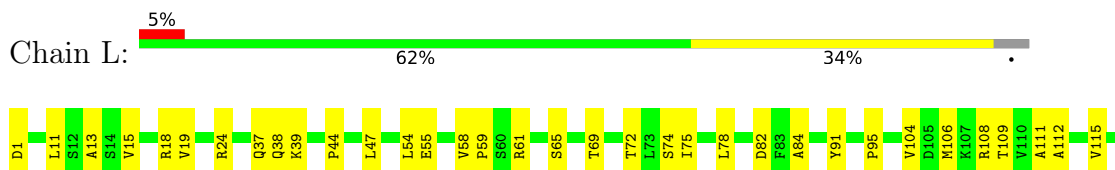
- Molecule 1: Envelope glycoprotein E2

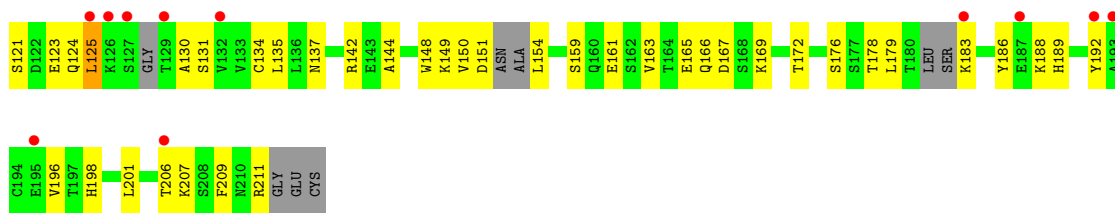


- Molecule 2: hcab40 Fab Heavy Chain

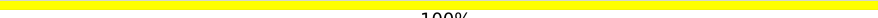


- Molecule 3: hcab40 Fab Light Chain





- Molecule 4: 2-acetamido-2-deoxy-beta-D-glucopyranose-(1-4)-2-acetamido-2-deoxy-beta-D-glucopyranose

Chain A:  100%


MAG1  
MAG2

- Molecule 4: 2-acetamido-2-deoxy-beta-D-glucopyranose-(1-4)-2-acetamido-2-deoxy-beta-D-glucopyranose

Chain B:  100%

MAG1  
MAG2

- Molecule 4: 2-acetamido-2-deoxy-beta-D-glucopyranose-(1-4)-2-acetamido-2-deoxy-beta-D-glucopyranose

Chain I:  100%

MAG1  
MAG2

- Molecule 5: beta-D-mannopyranose-(1-4)-2-acetamido-2-deoxy-beta-D-glucopyranose-(1-4)-2-acetamido-2-deoxy-beta-D-glucopyranose

Chain D:  100%

MAG1  
MAG2  
BMA3


- Molecule 6: alpha-D-mannopyranose-(1-2)-alpha-D-mannopyranose-(1-3)-[alpha-D-mannopyranose-(1-3)-[alpha-D-mannopyranose-(1-6)]alpha-D-mannopyranose-(1-6)]beta-D-mannopyranose-(1-4)-2-acetamido-2-deoxy-beta-D-glucopyranose-(1-4)-2-acetamido-2-deoxy-beta-D-glucopyranose

Chain E:  100%

MAG1  
MAG2  
BMA3  
MAN4  
MAN5  
MAN6  
MAN7  
MAN8

- Molecule 7: alpha-D-mannopyranose-(1-3)-beta-D-mannopyranose-(1-4)-2-acetamido-2-deoxy-beta-D-glucopyranose-(1-4)-2-acetamido-2-deoxy-beta-D-glucopyranose



Chain F:  75% 25%

MAG1  
MAG2  
BMA3  
MAN4

- Molecule 8: alpha-D-mannopyranose-(1-3)-[alpha-D-mannopyranose-(1-6)]beta-D-mannopyranose-(1-4)-2-acetamido-2-deoxy-beta-D-glucopyranose-(1-3)-2-acetamido-2-deoxy-beta-D-glucopyranose

Chain G:  20% 80%

MAG1  
MAG2  
BMA3  
MAN4  
MAN5

## 4 Data and refinement statistics i

Property	Value	Source
Space group	P 32 2 1	Depositor
Cell constants a, b, c, $\alpha$ , $\beta$ , $\gamma$	79.91Å 79.91Å 294.57Å 90.00° 90.00° 120.00°	Depositor
Resolution (Å)	40.04 – 3.12 40.04 – 3.12	Depositor EDS
% Data completeness (in resolution range)	99.8 (40.04-3.12) 99.8 (40.04-3.12)	Depositor EDS
$R_{merge}$	0.20	Depositor
$R_{sym}$	(Not available)	Depositor
$\langle I/\sigma(I) \rangle$ <sup>1</sup>	1.79 (at 3.12Å)	Xtrriage
Refinement program	PHENIX 1.20.1_4487	Depositor
R, $R_{free}$	0.227 , 0.271 0.227 , 0.271	Depositor DCC
$R_{free}$ test set	968 reflections (4.77%)	wwPDB-VP
Wilson B-factor (Å <sup>2</sup> )	111.2	Xtrriage
Anisotropy	0.241	Xtrriage
Bulk solvent $k_{sol}$ (e/Å <sup>3</sup> ), $B_{sol}$ (Å <sup>2</sup> )	0.30 , 90.8	EDS
L-test for twinning <sup>2</sup>	$\langle  L  \rangle = 0.48$ , $\langle L^2 \rangle = 0.31$	Xtrriage
Estimated twinning fraction	0.035 for -h,-k,l	Xtrriage
$F_o, F_c$ correlation	0.93	EDS
Total number of atoms	5284	wwPDB-VP
Average B, all atoms (Å <sup>2</sup> )	133.0	wwPDB-VP

Xtrriage's analysis on translational NCS is as follows: *The largest off-origin peak in the Patterson function is 3.31% of the height of the origin peak. No significant pseudotranslation is detected.*

<sup>1</sup>Intensities estimated from amplitudes.

<sup>2</sup>Theoretical values of  $\langle |L| \rangle$ ,  $\langle L^2 \rangle$  for acentric reflections are 0.5, 0.333 respectively for untwinned datasets, and 0.375, 0.2 for perfectly twinned datasets.

## 5 Model quality [i](#)

### 5.1 Standard geometry [i](#)

Bond lengths and bond angles in the following residue types are not validated in this section: MAN, BMA, NAG

The Z score for a bond length (or angle) is the number of standard deviations the observed value is removed from the expected value. A bond length (or angle) with  $|Z| > 5$  is considered an outlier worth inspection. RMSZ is the root-mean-square of all Z scores of the bond lengths (or angles).

Mol	Chain	Bond lengths		Bond angles	
		RMSZ	# Z  >5	RMSZ	# Z  >5
1	C	0.49	0/1864	0.72	0/2553
2	H	0.44	0/1574	0.71	1/2151 (0.0%)
3	L	0.45	0/1634	0.67	1/2214 (0.0%)
All	All	0.46	0/5072	0.70	2/6918 (0.0%)

Chiral center outliers are detected by calculating the chiral volume of a chiral center and verifying if the center is modelled as a planar moiety or with the opposite hand. A planarity outlier is detected by checking planarity of atoms in a peptide group, atoms in a mainchain group or atoms of a sidechain that are expected to be planar.

Mol	Chain	#Chirality outliers	#Planarity outliers
1	C	0	1

There are no bond length outliers.

All (2) bond angle outliers are listed below:

Mol	Chain	Res	Type	Atoms	Z	Observed(°)	Ideal(°)
3	L	125	LEU	CA-CB-CG	5.76	128.54	115.30
2	H	22	CYS	CA-CB-SG	5.07	123.12	114.00

There are no chirality outliers.

All (1) planarity outliers are listed below:

Mol	Chain	Res	Type	Group
1	C	510	THR	Peptide

## 5.2 Too-close contacts

In the following table, the Non-H and H(model) columns list the number of non-hydrogen atoms and hydrogen atoms in the chain respectively. The H(added) column lists the number of hydrogen atoms added and optimized by MolProbity. The Clashes column lists the number of clashes within the asymmetric unit, whereas Symm-Clashes lists symmetry-related clashes.

Mol	Chain	Non-H	H(model)	H(added)	Clashes	Symm-Clashes
1	C	1800	0	1659	63	0
2	H	1530	0	1478	91	0
3	L	1598	0	1541	60	0
4	A	28	0	25	0	0
4	B	28	0	25	0	0
4	I	28	0	25	0	0
5	D	39	0	34	0	0
6	E	94	0	79	0	0
7	F	50	0	43	1	0
8	G	61	0	52	2	0
9	C	28	0	26	1	0
All	All	5284	0	4987	199	0

The all-atom clashscore is defined as the number of clashes found per 1000 atoms (including hydrogen atoms). The all-atom clashscore for this structure is 19.

All (199) close contacts within the same asymmetric unit are listed below, sorted by their clash magnitude.

Atom-1	Atom-2	Interatomic distance (Å)	Clash overlap (Å)
2:H:100(A):ASP:HB3	2:H:100(D):THR:HG22	1.58	0.83
2:H:35:SER:HB2	2:H:95:PHE:HE1	1.46	0.80
1:C:428:ASN:HD22	1:C:500:SER:HA	1.46	0.79
2:H:12:LEU:HB2	2:H:111:VAL:HG22	1.64	0.78
2:H:100(D):THR:HG23	2:H:100(F):TYR:HB3	1.66	0.76
2:H:154:TRP:H	2:H:159:LEU:HD23	1.52	0.75
2:H:11:LEU:HD13	2:H:146:PHE:HE2	1.50	0.74
1:C:630:ARG:HE	1:C:639:ARG:HE	1.33	0.74
1:C:413:LEU:HG	1:C:414:ILE:HD12	1.69	0.73
3:L:130:ALA:HB2	3:L:186:TYR:HB2	1.71	0.73
2:H:168:ALA:HB2	2:H:178:LEU:HD12	1.71	0.72
1:C:608:LEU:HD11	1:C:614:ARG:HD2	1.72	0.72
2:H:33:TYR:HB2	2:H:95:PHE:HB2	1.71	0.72
2:H:87:THR:HG23	2:H:110:THR:HA	1.71	0.71
1:C:506:VAL:HG22	1:C:554:TRP:HB3	1.73	0.70
3:L:144:ALA:HB2	3:L:198:HIS:HD2	1.56	0.70

*Continued on next page...*

*Continued from previous page...*

Atom-1	Atom-2	Interatomic distance (Å)	Clash overlap (Å)
1:C:629:VAL:HG12	2:H:100:TYR:HB3	1.74	0.70
1:C:413:LEU:HG	1:C:414:ILE:H	1.57	0.69
3:L:130:ALA:CB	3:L:186:TYR:HB2	2.23	0.68
3:L:115:VAL:HG21	3:L:196:VAL:HG11	1.76	0.68
1:C:416:THR:CG2	1:C:420:TRP:HE1	2.05	0.68
1:C:416:THR:HG21	1:C:420:TRP:HE1	1.58	0.68
1:C:462:ILE:HD12	1:C:605:PRO:HG2	1.77	0.66
1:C:629:VAL:HB	2:H:100(B):LEU:HD11	1.77	0.66
3:L:142:ARG:HD3	3:L:163:VAL:HG21	1.78	0.66
1:C:608:LEU:HD21	1:C:621:THR:HG21	1.78	0.66
2:H:52:ASN:OD1	2:H:56:SER:N	2.29	0.66
1:C:481:ASP:O	1:C:492:ARG:NH2	2.29	0.65
1:C:561:THR:HG21	1:C:617:HIS:O	1.96	0.65
3:L:186:TYR:O	3:L:211:ARG:NH2	2.30	0.65
2:H:166:PHE:CD2	3:L:176:SER:HB3	2.32	0.64
2:H:38:ARG:HH22	2:H:86:ASP:HA	1.61	0.64
2:H:145:TYR:CE1	2:H:150:VAL:HG11	2.32	0.64
3:L:131:SER:HA	3:L:179:LEU:O	1.97	0.64
2:H:40:PRO:HB2	2:H:43:LYS:HB2	1.80	0.64
2:H:38:ARG:NH2	2:H:86:ASP:HA	2.13	0.63
1:C:602:TRP:CH2	1:C:608:LEU:HD23	2.34	0.63
2:H:116:THR:HA	2:H:146:PHE:CB	2.29	0.63
3:L:37:GLN:HB2	3:L:47:LEU:HD11	1.82	0.61
2:H:119:PRO:HD3	2:H:200:HIS:ND1	2.15	0.61
1:C:555:MET:HE1	1:C:561:THR:HG22	1.82	0.61
1:C:544:PRO:HG2	1:C:550:PHE:CE2	2.37	0.60
1:C:428:ASN:ND2	1:C:500:SER:HA	2.16	0.59
2:H:116:THR:HA	2:H:146:PHE:HB3	1.83	0.59
3:L:108:ARG:HH22	3:L:111:ALA:HB3	1.68	0.59
2:H:154:TRP:N	2:H:159:LEU:HD23	2.18	0.58
2:H:116:THR:HA	2:H:146:PHE:CG	2.39	0.58
1:C:624:PHE:CD1	1:C:645:ASN:HB3	2.39	0.58
1:C:546:GLN:H	1:C:546:GLN:CD	2.08	0.57
1:C:630:ARG:HE	1:C:639:ARG:NE	2.02	0.57
2:H:117:LYS:H	2:H:146:PHE:HB3	1.69	0.57
3:L:55:GLU:O	3:L:58:VAL:HG22	2.05	0.57
2:H:82(C):VAL:HG12	2:H:111:VAL:HG11	1.87	0.57
1:C:481:ASP:O	1:C:482:GLN:NE2	2.37	0.57
2:H:123:PRO:HD2	3:L:121:SER:HB3	1.87	0.56
2:H:146:PHE:HB3	2:H:147:PRO:HD3	1.87	0.56
1:C:541:ASN:HA	1:C:548:ASN:HD21	1.71	0.56

*Continued on next page...*

*Continued from previous page...*

Atom-1	Atom-2	Interatomic distance (Å)	Clash overlap (Å)
1:C:625:THR:HG23	2:H:53:PRO:HG2	1.85	0.56
3:L:149:LYS:HG2	3:L:154:LEU:HA	1.86	0.56
2:H:153:SER:HA	2:H:159:LEU:HD21	1.87	0.56
2:H:153:SER:HA	2:H:159:LEU:CD2	2.36	0.56
2:H:59:TYR:CE1	2:H:69:ILE:HD12	2.41	0.55
3:L:61:ARG:HH21	3:L:82:ASP:CG	2.09	0.55
3:L:106:MET:HB2	3:L:166:GLN:NE2	2.21	0.55
3:L:108:ARG:HG2	3:L:109:THR:N	2.22	0.55
1:C:543:ARG:NH2	1:C:567:PRO:O	2.36	0.55
1:C:555:MET:HG3	1:C:616:TRP:CZ2	2.41	0.55
2:H:178:LEU:HD23	2:H:179:SER:N	2.22	0.54
2:H:98:PRO:HG3	2:H:100(J):PRO:HB3	1.88	0.54
3:L:142:ARG:HE	3:L:163:VAL:HG11	1.73	0.54
1:C:446:LYS:NZ	2:H:74:SER:O	2.39	0.54
3:L:134:CYS:HB2	3:L:148:TRP:CZ2	2.43	0.54
3:L:189:HIS:O	3:L:211:ARG:NH2	2.40	0.54
3:L:125:LEU:HD12	3:L:183:LYS:HG3	1.90	0.53
1:C:555:MET:HG3	1:C:616:TRP:CH2	2.43	0.53
3:L:59:PRO:HB2	3:L:61:ARG:HG3	1.90	0.53
3:L:108:ARG:HG2	3:L:109:THR:H	1.74	0.53
1:C:423:ASN:HB3	1:C:527:TYR:O	2.09	0.53
1:C:632:TYR:CE1	1:C:637:GLU:HG3	2.43	0.53
2:H:13:LYS:HG2	2:H:14:PRO:HD2	1.90	0.53
3:L:61:ARG:NH2	3:L:82:ASP:OD1	2.40	0.52
1:C:627:PHE:HB3	2:H:100:TYR:HB2	1.92	0.52
2:H:36:TRP:HB3	2:H:48:ILE:HD12	1.92	0.52
3:L:192:TYR:HB2	3:L:209:PHE:CE1	2.44	0.52
3:L:39:LYS:HG2	3:L:84:ALA:HB2	1.92	0.51
2:H:35:SER:HB2	2:H:95:PHE:CE1	2.37	0.51
1:C:626:ILE:HD12	2:H:32:TYR:CZ	2.45	0.51
1:C:424:ARG:NH1	1:C:518:THR:O	2.43	0.51
3:L:142:ARG:O	3:L:142:ARG:HG3	2.10	0.51
2:H:100(B):LEU:H	2:H:100(B):LEU:HD12	1.76	0.51
2:H:147:PRO:HD2	2:H:200:HIS:NE2	2.26	0.50
2:H:100(D):THR:CG2	2:H:100(F):TYR:HB3	2.39	0.50
1:C:496:THR:HG23	1:C:538:ILE:HA	1.92	0.50
1:C:631:MET:HG2	1:C:632:TYR:N	2.27	0.50
2:H:147:PRO:HD2	2:H:200:HIS:HE2	1.75	0.50
3:L:142:ARG:CD	3:L:163:VAL:HG21	2.41	0.50
1:C:637:GLU:OE1	1:C:639:ARG:NH1	2.46	0.49
3:L:150:VAL:O	3:L:151:ASP:HB2	2.12	0.49

*Continued on next page...*

*Continued from previous page...*

Atom-1	Atom-2	Interatomic distance (Å)	Clash overlap (Å)
3:L:18:ARG:HA	3:L:75:ILE:O	2.12	0.49
1:C:506:VAL:HG22	1:C:554:TRP:CB	2.41	0.49
2:H:82(C):VAL:HG11	2:H:111:VAL:HG21	1.94	0.49
1:C:511:PRO:HG3	1:C:631:MET:HE1	1.95	0.48
2:H:200:HIS:CE1	2:H:203:SER:HB3	2.48	0.48
3:L:206:THR:O	3:L:207:LYS:HD3	2.14	0.48
2:H:147:PRO:HD2	2:H:200:HIS:CE1	2.48	0.48
2:H:47:TRP:CZ2	2:H:49:GLY:HA2	2.49	0.48
2:H:143:LYS:HD2	2:H:144:ASP:CG	2.34	0.47
3:L:188:LYS:HG3	3:L:189:HIS:CE1	2.48	0.47
2:H:151:THR:HB	2:H:199:ASN:HB2	1.95	0.47
2:H:11:LEU:HD13	2:H:146:PHE:CE2	2.38	0.47
1:C:609:VAL:HG13	1:C:640:LEU:HD12	1.97	0.47
2:H:61:PRO:HD2	3:L:95:PRO:HG3	1.96	0.47
3:L:11:LEU:HD21	3:L:13:ALA:HB2	1.97	0.47
1:C:420:TRP:CZ2	1:C:442:PHE:CD1	3.03	0.47
2:H:60:ASN:HB3	2:H:63:LEU:HD23	1.97	0.47
3:L:106:MET:HB2	3:L:166:GLN:HE22	1.79	0.47
1:C:625:THR:HB	1:C:627:PHE:CZ	2.50	0.46
1:C:630:ARG:NE	1:C:639:ARG:HE	2.07	0.46
2:H:200:HIS:CG	2:H:203:SER:HG	2.33	0.46
3:L:134:CYS:HB2	3:L:148:TRP:CH2	2.50	0.46
1:C:420:TRP:CH2	1:C:442:PHE:CE1	3.03	0.46
1:C:532:ASN:OD1	1:C:534:THR:HG23	2.15	0.46
2:H:100(K):GLY:HA3	3:L:91:TYR:CB	2.45	0.46
1:C:611:TYR:HB2	1:C:612:PRO:HD2	1.97	0.46
2:H:29:PHE:CZ	2:H:73:ARG:HB3	2.51	0.46
2:H:122:PHE:CE2	3:L:124:GLN:HG3	2.50	0.46
3:L:11:LEU:HD22	3:L:104:VAL:HG23	1.97	0.46
2:H:20:LEU:HD11	2:H:107:THR:HG23	1.97	0.45
2:H:159:LEU:HD12	2:H:159:LEU:O	2.16	0.45
1:C:493:GLN:HA	1:C:565:GLY:O	2.15	0.45
1:C:630:ARG:HG2	1:C:639:ARG:HG2	1.98	0.45
2:H:170:LEU:HD21	2:H:176:TYR:CZ	2.52	0.45
1:C:603:LEU:HD11	1:C:640:LEU:HD11	1.98	0.45
2:H:166:PHE:CE2	3:L:176:SER:HB3	2.52	0.45
2:H:33:TYR:HB2	2:H:95:PHE:CB	2.45	0.45
2:H:36:TRP:CE2	2:H:80:LEU:HB2	2.51	0.45
2:H:103:TRP:CE3	3:L:44:PRO:HD2	2.52	0.44
1:C:532:ASN:HA	9:C:701:NAG:H82	1.99	0.44
3:L:38:GLN:O	3:L:84:ALA:HB1	2.17	0.44

*Continued on next page...*

*Continued from previous page...*

Atom-1	Atom-2	Interatomic distance (Å)	Clash overlap (Å)
1:C:624:PHE:O	2:H:31:GLY:HA2	2.17	0.44
2:H:121:VAL:HG22	2:H:142:VAL:HG12	1.99	0.44
3:L:19:VAL:O	3:L:74:SER:HA	2.18	0.44
3:L:108:ARG:HH21	3:L:172:THR:HG22	1.82	0.44
1:C:576:ASN:OD1	1:C:576:ASN:N	2.47	0.44
2:H:155:ASN:HB2	2:H:158:ALA:HB3	2.00	0.43
7:F:1:NAG:H61	7:F:2:NAG:H82	2.00	0.43
1:C:627:PHE:CB	2:H:100:TYR:HB2	2.49	0.43
2:H:123:PRO:HD2	3:L:121:SER:CB	2.49	0.43
3:L:159:SER:HA	3:L:178:THR:O	2.18	0.43
1:C:555:MET:CE	1:C:561:THR:HG22	2.47	0.43
2:H:13:LYS:O	2:H:16:GLU:HB2	2.18	0.43
2:H:60:ASN:HB3	2:H:63:LEU:CD2	2.48	0.43
2:H:117:LYS:HG2	2:H:118:GLY:H	1.81	0.43
2:H:83:THR:HG22	2:H:86:ASP:OD2	2.19	0.43
3:L:1:ASP:OD2	3:L:95:PRO:HG2	2.19	0.43
2:H:12:LEU:HD11	2:H:18:LEU:HD13	1.99	0.43
2:H:93:ALA:HB1	2:H:100(M):PHE:HB3	2.00	0.43
2:H:114:ALA:HB3	2:H:146:PHE:CD1	2.53	0.43
2:H:116:THR:HA	2:H:146:PHE:CD2	2.54	0.43
3:L:167:ASP:OD1	3:L:169:LYS:N	2.47	0.43
1:C:626:ILE:HG13	2:H:31:GLY:HA3	2.00	0.43
3:L:144:ALA:HB2	3:L:198:HIS:CD2	2.46	0.42
2:H:145:TYR:CZ	2:H:150:VAL:HG11	2.54	0.42
3:L:121:SER:HB2	3:L:123:GLU:OE1	2.20	0.42
3:L:15:VAL:HG13	3:L:78:LEU:O	2.19	0.42
1:C:556:ASN:HB3	1:C:560:PHE:H	1.85	0.42
2:H:171:GLN:HG2	2:H:175:LEU:O	2.19	0.42
2:H:90:TYR:O	2:H:106:GLY:HA2	2.20	0.42
2:H:140:CYS:N	2:H:154:TRP:HZ2	2.18	0.42
3:L:112:ALA:HB1	3:L:201:LEU:HG	2.02	0.42
3:L:150:VAL:O	3:L:150:VAL:HG13	2.19	0.42
3:L:54:LEU:HG	3:L:58:VAL:CG2	2.50	0.42
1:C:465:PHE:CD2	1:C:579:LEU:HB2	2.54	0.42
3:L:24:ARG:HA	3:L:69:THR:O	2.20	0.42
3:L:115:VAL:HA	3:L:135:LEU:O	2.19	0.42
2:H:63:LEU:O	2:H:66:ARG:HG2	2.20	0.41
2:H:100(D):THR:HG23	2:H:100(F):TYR:N	2.34	0.41
1:C:556:ASN:HB2	1:C:560:PHE:O	2.21	0.41
2:H:199:ASN:O	2:H:201:LYS:N	2.53	0.41
3:L:165:GLU:CD	3:L:166:GLN:H	2.23	0.41

*Continued on next page...*



Continued from previous page...

Atom-1	Atom-2	Interatomic distance (Å)	Clash overlap (Å)
8:G:1:NAG:O4	8:G:2:NAG:N2	2.53	0.41
1:C:489:TYR:O	1:C:491:PRO:HD3	2.20	0.41
1:C:623:ASN:HB3	2:H:54:THR:HG22	2.03	0.41
8:G:3:BMA:O2	8:G:4:MAN:H2	2.21	0.41
1:C:414:ILE:HD12	1:C:414:ILE:H	1.86	0.41
3:L:11:LEU:O	3:L:104:VAL:HA	2.20	0.41
1:C:630:ARG:HH21	1:C:639:ARG:HE	1.68	0.41
2:H:117:LYS:HG2	2:H:118:GLY:N	2.35	0.41
3:L:135:LEU:HG	3:L:137:ASN:OD1	2.21	0.41
1:C:509:PHE:HA	1:C:512:SER:O	2.20	0.41
2:H:29:PHE:CE2	2:H:73:ARG:HD3	2.56	0.41
2:H:142:VAL:HG21	2:H:145:TYR:OH	2.20	0.41
3:L:161:GLU:HA	3:L:176:SER:O	2.20	0.41
2:H:112:SER:OG	2:H:146:PHE:CE1	2.74	0.40
2:H:170:LEU:HD21	2:H:176:TYR:CE1	2.56	0.40
1:C:497:ILE:HA	1:C:498:PRO:HD3	1.97	0.40
3:L:65:SER:O	3:L:72:THR:HG22	2.21	0.40
2:H:13:LYS:HD2	2:H:14:PRO:O	2.22	0.40
2:H:145:TYR:CD1	2:H:150:VAL:HG11	2.56	0.40

There are no symmetry-related clashes.

## 5.3 Torsion angles [i](#)

### 5.3.1 Protein backbone [i](#)

In the following table, the Percentiles column shows the percent Ramachandran outliers of the chain as a percentile score with respect to all X-ray entries followed by that with respect to entries of similar resolution.

The Analysed column shows the number of residues for which the backbone conformation was analysed, and the total number of residues.

Mol	Chain	Analysed	Favoured	Allowed	Outliers	Percentiles	
1	C	226/262 (86%)	212 (94%)	12 (5%)	2 (1%)	17	51
2	H	193/241 (80%)	182 (94%)	11 (6%)	0	100	100
3	L	198/214 (92%)	191 (96%)	7 (4%)	0	100	100
All	All	617/717 (86%)	585 (95%)	30 (5%)	2 (0%)	41	73

All (2) Ramachandran outliers are listed below:

Mol	Chain	Res	Type
1	C	511	PRO
1	C	423	ASN

### 5.3.2 Protein sidechains [i](#)

In the following table, the Percentiles column shows the percent sidechain outliers of the chain as a percentile score with respect to all X-ray entries followed by that with respect to entries of similar resolution.

The Analysed column shows the number of residues for which the sidechain conformation was analysed, and the total number of residues.

Mol	Chain	Analysed	Rotameric	Outliers	Percentiles	
1	C	194/219 (89%)	191 (98%)	3 (2%)	65	85
2	H	173/209 (83%)	173 (100%)	0	100	100
3	L	183/188 (97%)	183 (100%)	0	100	100
All	All	550/616 (89%)	547 (100%)	3 (0%)	88	94

All (3) residues with a non-rotameric sidechain are listed below:

Mol	Chain	Res	Type
1	C	423	ASN
1	C	562	LYS
1	C	587	ARG

Sometimes sidechains can be flipped to improve hydrogen bonding and reduce clashes. There are no such sidechains identified.

### 5.3.3 RNA [i](#)

There are no RNA molecules in this entry.

## 5.4 Non-standard residues in protein, DNA, RNA chains [i](#)

There are no non-standard protein/DNA/RNA residues in this entry.

## 5.5 Carbohydrates [i](#)

26 monosaccharides are modelled in this entry.

In the following table, the Counts columns list the number of bonds (or angles) for which Mogul statistics could be retrieved, the number of bonds (or angles) that are observed in the model and the number of bonds (or angles) that are defined in the Chemical Component Dictionary. The Link column lists molecule types, if any, to which the group is linked. The Z score for a bond length (or angle) is the number of standard deviations the observed value is removed from the expected value. A bond length (or angle) with  $|Z| > 2$  is considered an outlier worth inspection. RMSZ is the root-mean-square of all Z scores of the bond lengths (or angles).

Mol	Type	Chain	Res	Link	Bond lengths			Bond angles		
					Counts	RMSZ	# Z  > 2	Counts	RMSZ	# Z  > 2
4	NAG	A	1	1,4	14,14,15	0.54	0	17,19,21	1.07	1 (5%)
4	NAG	A	2	4	14,14,15	0.58	0	17,19,21	1.32	3 (17%)
4	NAG	B	1	1,4	14,14,15	0.73	0	17,19,21	1.73	3 (17%)
4	NAG	B	2	4	14,14,15	0.62	0	17,19,21	1.06	1 (5%)
5	NAG	D	1	5,1	14,14,15	0.67	0	17,19,21	1.28	2 (11%)
5	NAG	D	2	5	14,14,15	0.74	0	17,19,21	0.95	1 (5%)
5	BMA	D	3	5	11,11,12	1.45	2 (18%)	15,15,17	1.20	2 (13%)
6	NAG	E	1	1,6	14,14,15	0.47	0	17,19,21	1.71	3 (17%)
6	NAG	E	2	6	14,14,15	0.44	0	17,19,21	1.35	2 (11%)
6	BMA	E	3	6	11,11,12	0.75	0	15,15,17	1.17	1 (6%)
6	MAN	E	4	6	11,11,12	1.60	2 (18%)	15,15,17	1.32	3 (20%)
6	MAN	E	5	6	11,11,12	1.01	0	15,15,17	1.18	1 (6%)
6	MAN	E	6	6	11,11,12	1.02	1 (9%)	15,15,17	1.69	2 (13%)
6	MAN	E	7	6	11,11,12	0.65	0	15,15,17	1.18	1 (6%)
6	MAN	E	8	6	11,11,12	1.62	2 (18%)	15,15,17	0.99	1 (6%)
7	NAG	F	1	1,7	14,14,15	0.35	0	17,19,21	0.76	1 (5%)
7	NAG	F	2	7	14,14,15	0.39	0	17,19,21	0.89	0
7	BMA	F	3	7	11,11,12	1.19	2 (18%)	15,15,17	1.13	1 (6%)
7	MAN	F	4	7	11,11,12	1.28	2 (18%)	15,15,17	1.17	1 (6%)
8	NAG	G	1	1,8	14,14,15	0.52	0	17,19,21	1.25	3 (17%)
8	NAG	G	2	8	14,14,15	0.65	0	17,19,21	1.31	1 (5%)
8	BMA	G	3	8	11,11,12	1.66	4 (36%)	15,15,17	1.43	2 (13%)
8	MAN	G	4	8	11,11,12	1.14	1 (9%)	15,15,17	1.17	2 (13%)
8	MAN	G	5	8	11,11,12	1.60	2 (18%)	15,15,17	0.87	1 (6%)
4	NAG	I	1	1,4	14,14,15	0.53	0	17,19,21	1.29	2 (11%)
4	NAG	I	2	4	14,14,15	0.59	0	17,19,21	1.15	2 (11%)

In the following table, the Chirals column lists the number of chiral outliers, the number of chiral centers analysed, the number of these observed in the model and the number defined in the

Chemical Component Dictionary. Similar counts are reported in the Torsion and Rings columns.  
'-' means no outliers of that kind were identified.

Mol	Type	Chain	Res	Link	Chirals	Torsions	Rings
4	NAG	A	1	1,4	-	5/6/23/26	0/1/1/1
4	NAG	A	2	4	-	3/6/23/26	0/1/1/1
4	NAG	B	1	1,4	-	2/6/23/26	0/1/1/1
4	NAG	B	2	4	-	4/6/23/26	0/1/1/1
5	NAG	D	1	5,1	-	4/6/23/26	0/1/1/1
5	NAG	D	2	5	-	5/6/23/26	0/1/1/1
5	BMA	D	3	5	-	2/2/19/22	0/1/1/1
6	NAG	E	1	1,6	-	0/6/23/26	0/1/1/1
6	NAG	E	2	6	-	3/6/23/26	0/1/1/1
6	BMA	E	3	6	-	0/2/19/22	0/1/1/1
6	MAN	E	4	6	-	2/2/19/22	0/1/1/1
6	MAN	E	5	6	-	1/2/19/22	0/1/1/1
6	MAN	E	6	6	-	0/2/19/22	0/1/1/1
6	MAN	E	7	6	-	2/2/19/22	0/1/1/1
6	MAN	E	8	6	-	1/2/19/22	0/1/1/1
7	NAG	F	1	1,7	-	2/6/23/26	0/1/1/1
7	NAG	F	2	7	-	2/6/23/26	0/1/1/1
7	BMA	F	3	7	-	1/2/19/22	0/1/1/1
7	MAN	F	4	7	-	1/2/19/22	0/1/1/1
8	NAG	G	1	1,8	-	5/6/23/26	0/1/1/1
8	NAG	G	2	8	-	4/6/23/26	0/1/1/1
8	BMA	G	3	8	-	0/2/19/22	0/1/1/1
8	MAN	G	4	8	-	2/2/19/22	0/1/1/1
8	MAN	G	5	8	-	2/2/19/22	0/1/1/1
4	NAG	I	1	1,4	-	2/6/23/26	0/1/1/1
4	NAG	I	2	4	-	5/6/23/26	0/1/1/1

All (18) bond length outliers are listed below:

Mol	Chain	Res	Type	Atoms	Z	Observed(Å)	Ideal(Å)
6	E	8	MAN	C2-C3	4.08	1.58	1.52
8	G	5	MAN	O5-C1	-3.94	1.37	1.43
5	D	3	BMA	C1-C2	3.88	1.61	1.52
8	G	3	BMA	C4-C5	3.18	1.59	1.53
6	E	4	MAN	O2-C2	3.10	1.49	1.43
7	F	4	MAN	C1-C2	3.08	1.59	1.52
8	G	4	MAN	C1-C2	2.83	1.58	1.52

*Continued on next page...*

*Continued from previous page...*

Mol	Chain	Res	Type	Atoms	Z	Observed(Å)	Ideal(Å)
8	G	3	BMA	O3-C3	2.72	1.49	1.43
7	F	4	MAN	O5-C1	-2.34	1.40	1.43
5	D	3	BMA	C2-C3	2.27	1.55	1.52
6	E	8	MAN	C4-C3	2.14	1.57	1.52
7	F	3	BMA	C4-C5	2.13	1.57	1.53
7	F	3	BMA	C4-C3	2.08	1.57	1.52
6	E	4	MAN	C1-C2	2.08	1.56	1.52
6	E	6	MAN	O5-C5	2.07	1.47	1.43
8	G	5	MAN	C4-C5	2.07	1.57	1.53
8	G	3	BMA	C4-C3	2.07	1.57	1.52
8	G	3	BMA	O5-C5	2.02	1.47	1.43

All (43) bond angle outliers are listed below:

Mol	Chain	Res	Type	Atoms	Z	Observed(°)	Ideal(°)
6	E	6	MAN	C1-O5-C5	5.56	119.73	112.19
4	B	1	NAG	C1-O5-C5	3.98	117.58	112.19
4	B	1	NAG	O5-C1-C2	-3.96	105.04	111.29
6	E	1	NAG	C2-N2-C7	-3.77	117.53	122.90
8	G	2	NAG	C1-C2-N2	3.76	116.91	110.49
8	G	3	BMA	C1-O5-C5	3.75	117.28	112.19
6	E	7	MAN	C1-O5-C5	3.59	117.05	112.19
4	I	1	NAG	C1-O5-C5	3.55	117.00	112.19
6	E	3	BMA	O2-C2-C3	-3.45	103.23	110.14
6	E	5	MAN	C1-O5-C5	3.34	116.71	112.19
5	D	1	NAG	O5-C1-C2	-3.25	106.16	111.29
6	E	1	NAG	O4-C4-C3	-3.14	103.08	110.35
5	D	2	NAG	O5-C1-C2	-3.13	106.34	111.29
4	B	1	NAG	C3-C4-C5	-3.07	104.76	110.24
4	B	2	NAG	C1-O5-C5	3.04	116.31	112.19
6	E	6	MAN	O2-C2-C3	-3.02	104.08	110.14
6	E	2	NAG	C2-N2-C7	-3.00	118.63	122.90
4	A	2	NAG	O5-C1-C2	-2.92	106.67	111.29
6	E	2	NAG	O5-C5-C6	2.87	111.71	107.20
8	G	4	MAN	C1-O5-C5	2.71	115.87	112.19
7	F	3	BMA	C1-C2-C3	-2.67	106.38	109.67
6	E	4	MAN	O2-C2-C1	2.66	114.60	109.15
4	A	2	NAG	C1-C2-N2	2.66	115.03	110.49
7	F	4	MAN	O2-C2-C3	-2.61	104.91	110.14
6	E	1	NAG	C1-C2-N2	-2.59	106.06	110.49
8	G	1	NAG	C4-C3-C2	-2.56	107.26	111.02
4	I	1	NAG	O5-C1-C2	-2.52	107.31	111.29

*Continued on next page...*

*Continued from previous page...*

Mol	Chain	Res	Type	Atoms	Z	Observed(°)	Ideal(°)
4	A	2	NAG	O5-C5-C6	2.43	111.02	107.20
4	I	2	NAG	O5-C1-C2	-2.40	107.50	111.29
4	A	1	NAG	C2-N2-C7	2.37	126.28	122.90
6	E	4	MAN	C1-O5-C5	2.33	115.35	112.19
5	D	3	BMA	C1-C2-C3	2.31	112.50	109.67
5	D	1	NAG	C1-O5-C5	2.28	115.28	112.19
8	G	3	BMA	O3-C3-C4	2.26	115.57	110.35
6	E	8	MAN	C1-O5-C5	2.22	115.19	112.19
7	F	1	NAG	O5-C1-C2	-2.14	107.90	111.29
8	G	1	NAG	O5-C5-C4	-2.13	105.65	110.83
6	E	4	MAN	O5-C1-C2	2.12	114.05	110.77
8	G	1	NAG	C2-N2-C7	2.09	125.89	122.90
8	G	5	MAN	O2-C2-C3	-2.08	105.98	110.14
8	G	4	MAN	O2-C2-C1	2.05	113.35	109.15
5	D	3	BMA	O2-C2-C3	-2.03	106.07	110.14
4	I	2	NAG	C1-C2-N2	2.02	113.94	110.49

There are no chirality outliers.

All (60) torsion outliers are listed below:

Mol	Chain	Res	Type	Atoms
4	A	1	NAG	C3-C2-N2-C7
4	A	1	NAG	C8-C7-N2-C2
4	A	1	NAG	O7-C7-N2-C2
4	A	2	NAG	C8-C7-N2-C2
4	A	2	NAG	O7-C7-N2-C2
4	B	2	NAG	C8-C7-N2-C2
4	B	2	NAG	O7-C7-N2-C2
4	I	2	NAG	C1-C2-N2-C7
4	I	2	NAG	C8-C7-N2-C2
4	I	2	NAG	O7-C7-N2-C2
5	D	1	NAG	C8-C7-N2-C2
5	D	1	NAG	O7-C7-N2-C2
5	D	2	NAG	C3-C2-N2-C7
5	D	2	NAG	C8-C7-N2-C2
5	D	2	NAG	O7-C7-N2-C2
8	G	1	NAG	C3-C2-N2-C7
6	E	2	NAG	O5-C5-C6-O6
6	E	4	MAN	C4-C5-C6-O6
8	G	5	MAN	O5-C5-C6-O6
8	G	1	NAG	C8-C7-N2-C2
5	D	2	NAG	O5-C5-C6-O6

*Continued on next page...*

*Continued from previous page...*

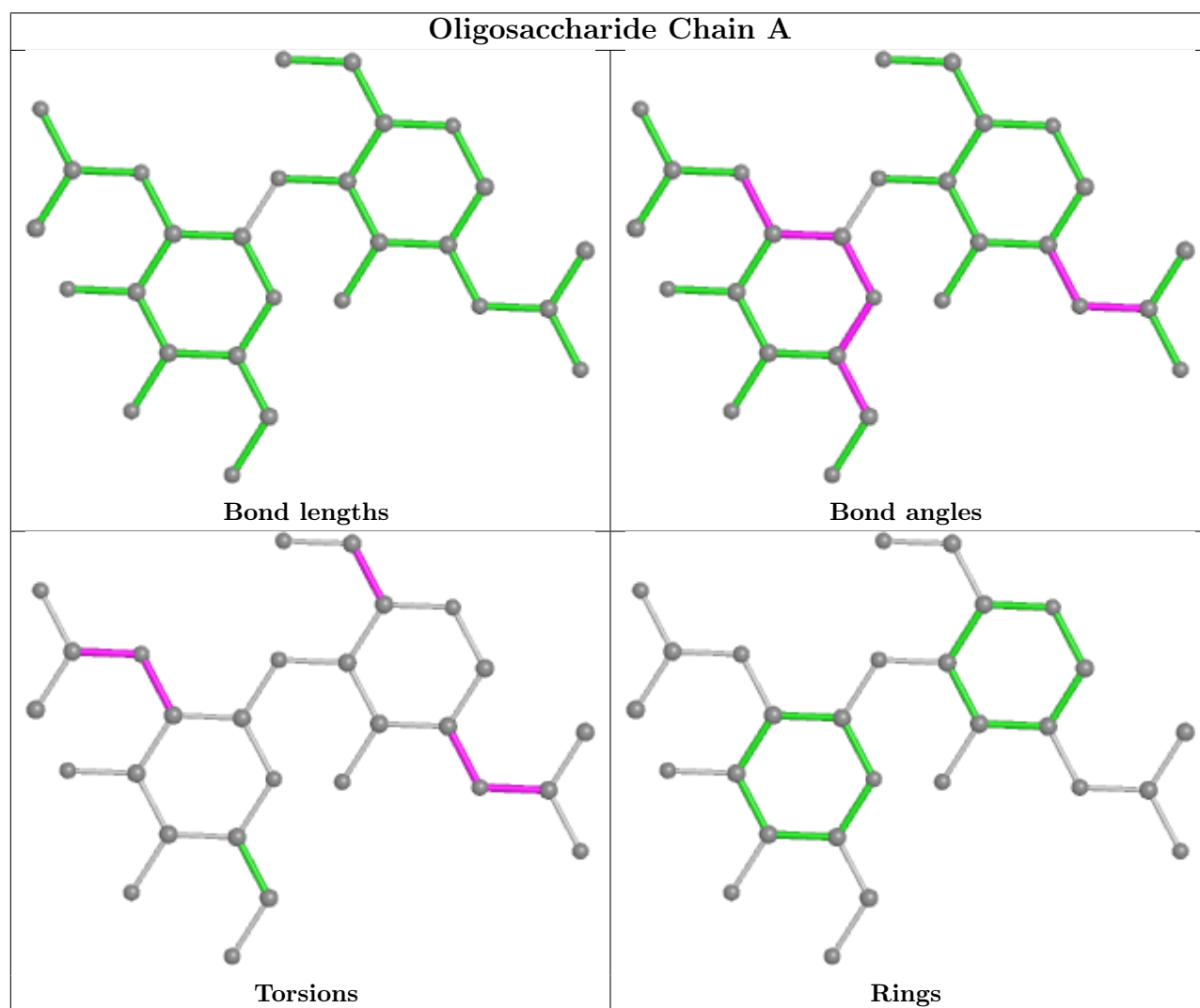
Mol	Chain	Res	Type	Atoms
4	B	2	NAG	O5-C5-C6-O6
6	E	2	NAG	C4-C5-C6-O6
8	G	1	NAG	O5-C5-C6-O6
6	E	4	MAN	O5-C5-C6-O6
4	I	2	NAG	C4-C5-C6-O6
8	G	1	NAG	O7-C7-N2-C2
4	B	1	NAG	O5-C5-C6-O6
4	I	1	NAG	C4-C5-C6-O6
8	G	1	NAG	C4-C5-C6-O6
5	D	1	NAG	O5-C5-C6-O6
8	G	2	NAG	O5-C5-C6-O6
7	F	2	NAG	C8-C7-N2-C2
8	G	5	MAN	C4-C5-C6-O6
4	A	1	NAG	O5-C5-C6-O6
6	E	7	MAN	C4-C5-C6-O6
8	G	2	NAG	C4-C5-C6-O6
4	I	1	NAG	O5-C5-C6-O6
4	A	1	NAG	C4-C5-C6-O6
7	F	2	NAG	O7-C7-N2-C2
4	I	2	NAG	O5-C5-C6-O6
5	D	3	BMA	O5-C5-C6-O6
6	E	7	MAN	O5-C5-C6-O6
4	A	2	NAG	C1-C2-N2-C7
5	D	2	NAG	C4-C5-C6-O6
4	B	2	NAG	C4-C5-C6-O6
6	E	5	MAN	O5-C5-C6-O6
7	F	3	BMA	O5-C5-C6-O6
4	B	1	NAG	C4-C5-C6-O6
6	E	8	MAN	O5-C5-C6-O6
8	G	4	MAN	C4-C5-C6-O6
7	F	4	MAN	O5-C5-C6-O6
5	D	1	NAG	C4-C5-C6-O6
7	F	1	NAG	C4-C5-C6-O6
8	G	4	MAN	O5-C5-C6-O6
8	G	2	NAG	O7-C7-N2-C2
8	G	2	NAG	C8-C7-N2-C2
6	E	2	NAG	C8-C7-N2-C2
7	F	1	NAG	O5-C5-C6-O6
5	D	3	BMA	C4-C5-C6-O6

There are no ring outliers.

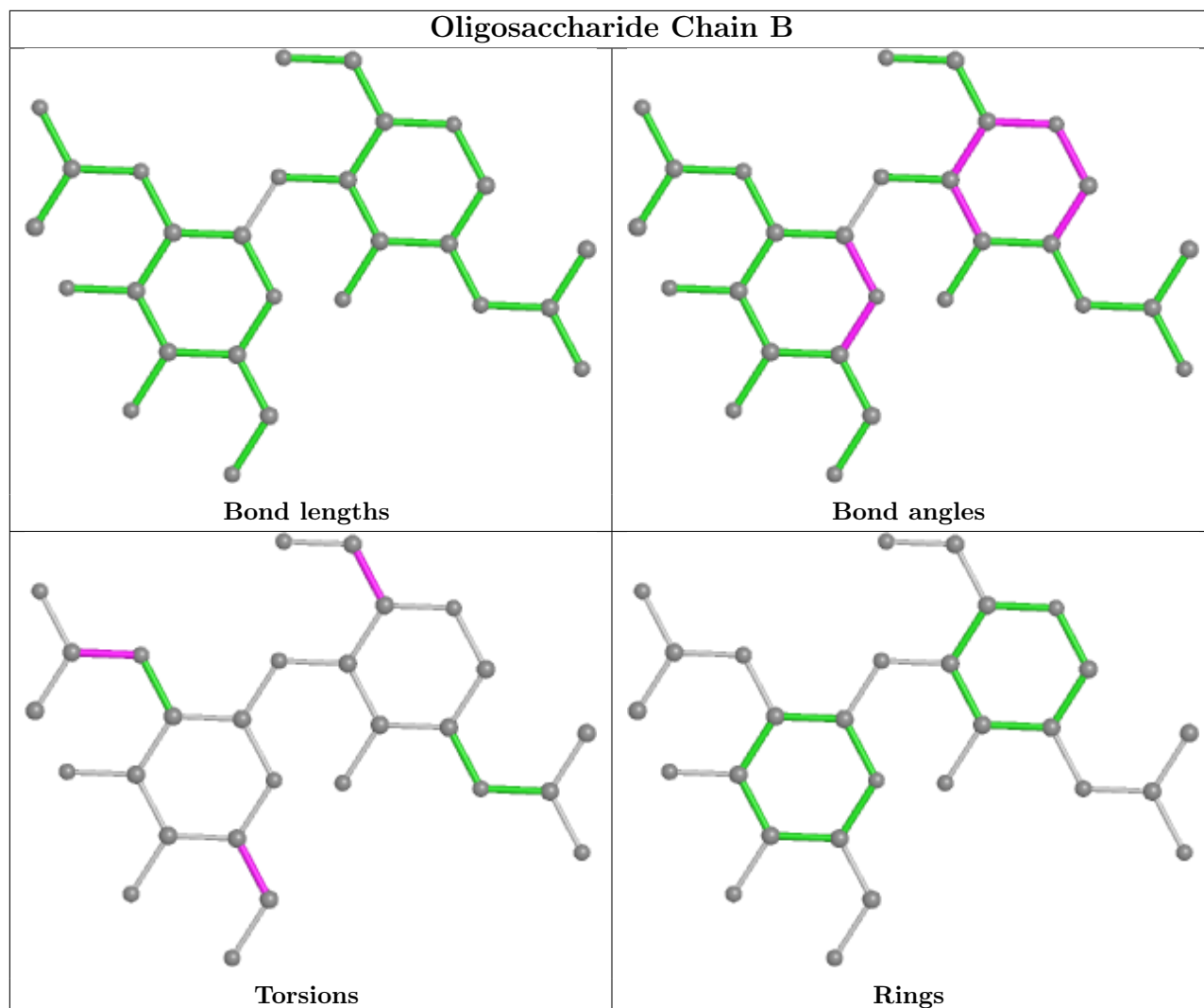
6 monomers are involved in 3 short contacts:

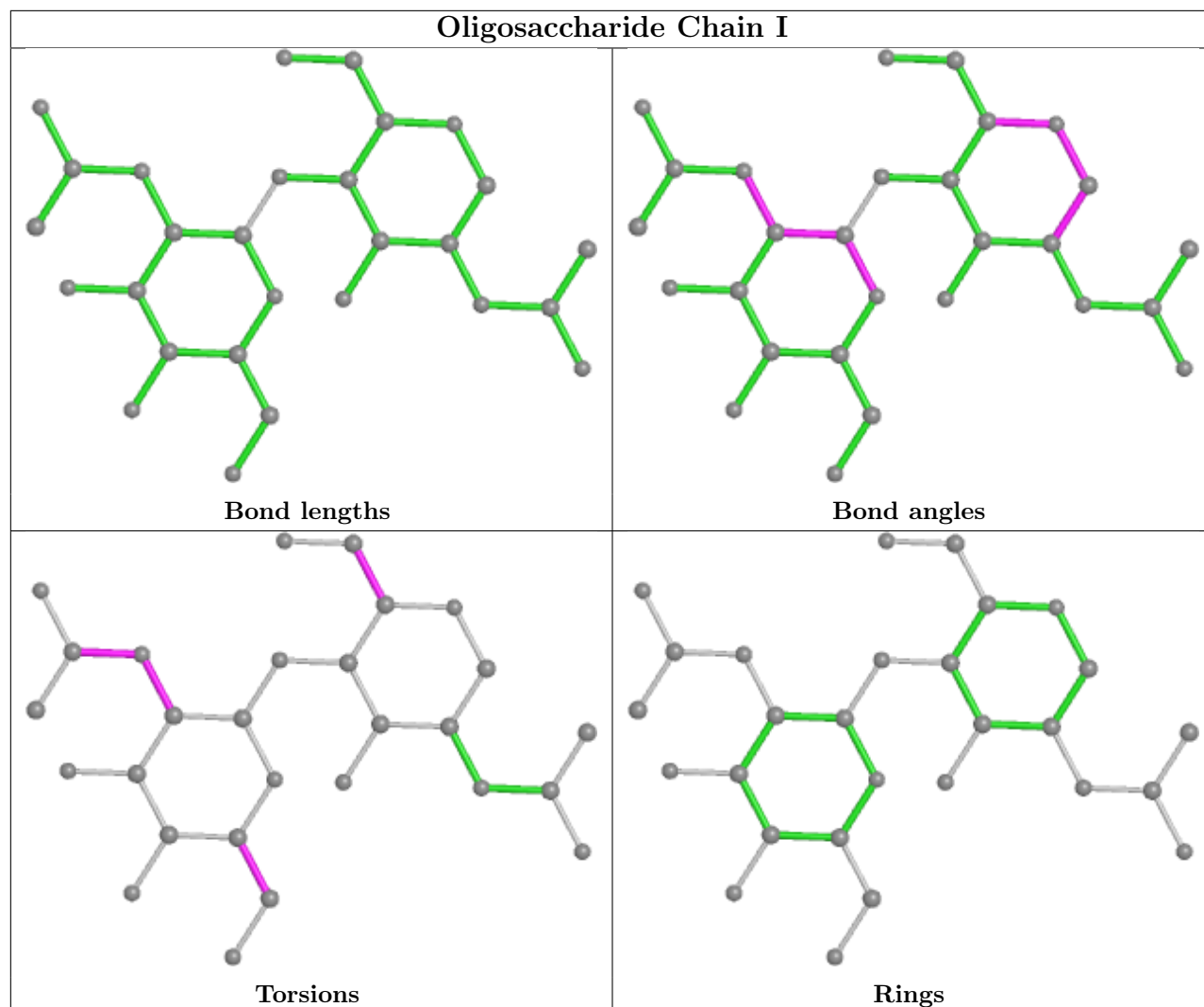
Mol	Chain	Res	Type	Clashes	Symm-Clashes
7	F	1	NAG	1	0
8	G	4	MAN	1	0
8	G	1	NAG	1	0
8	G	2	NAG	1	0
7	F	2	NAG	1	0
8	G	3	BMA	1	0

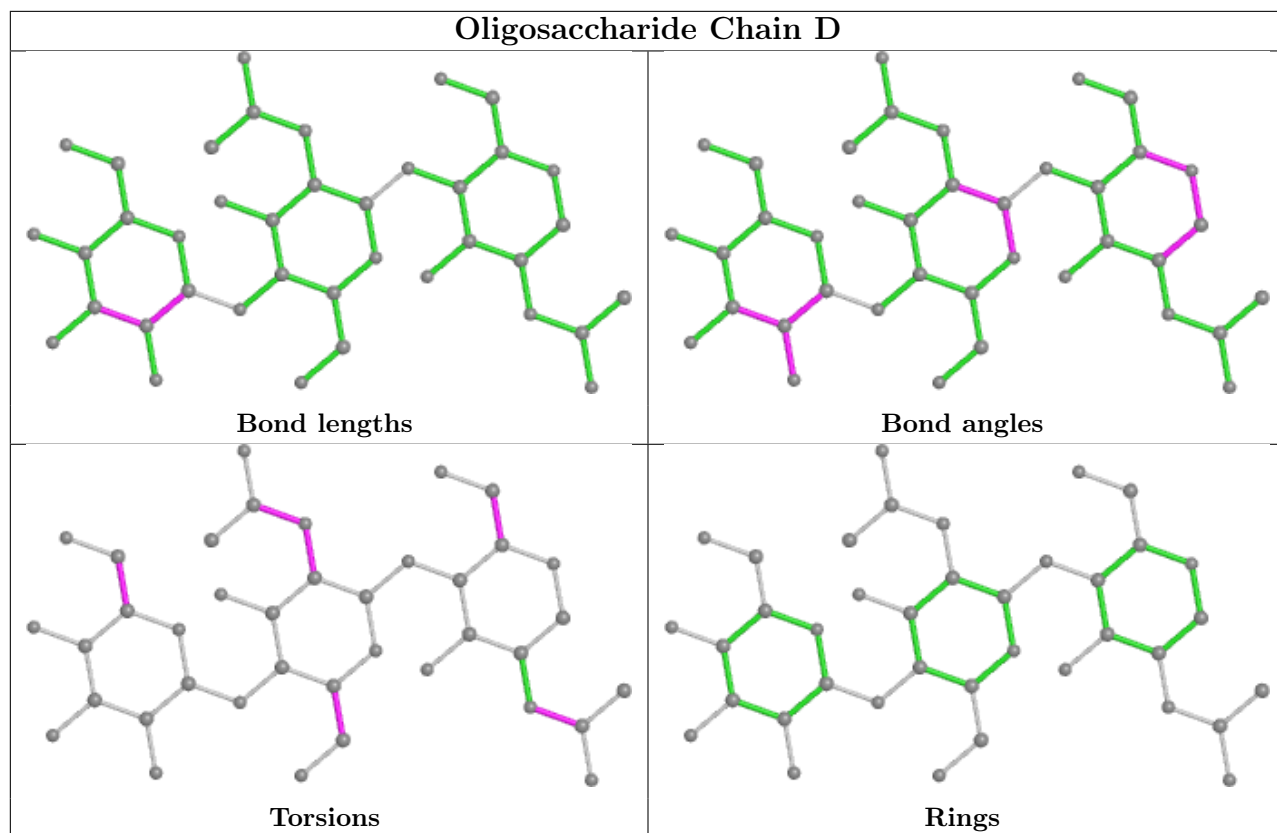
The following is a two-dimensional graphical depiction of Mogul quality analysis of bond lengths, bond angles, torsion angles, and ring geometry for oligosaccharide.

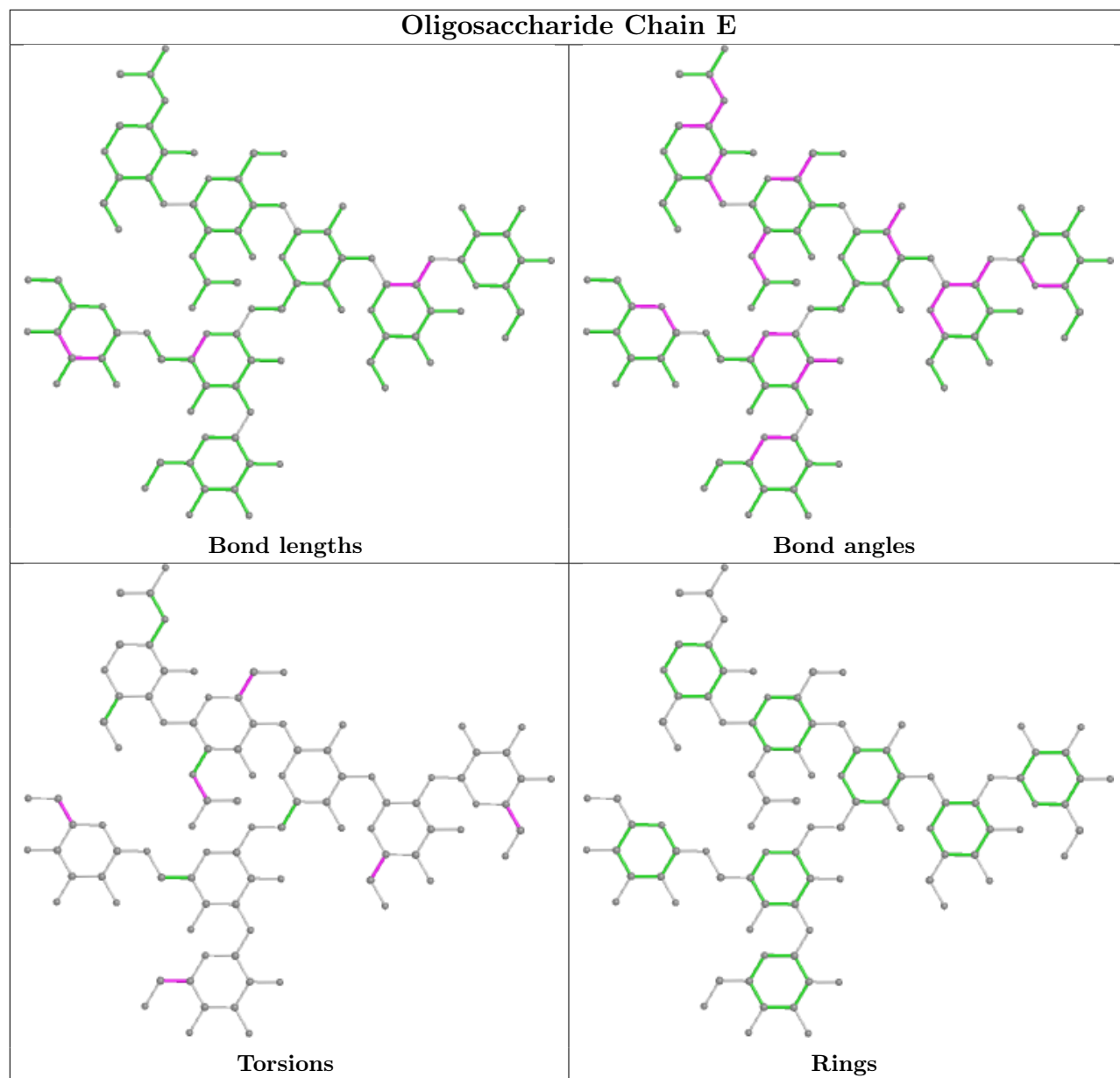


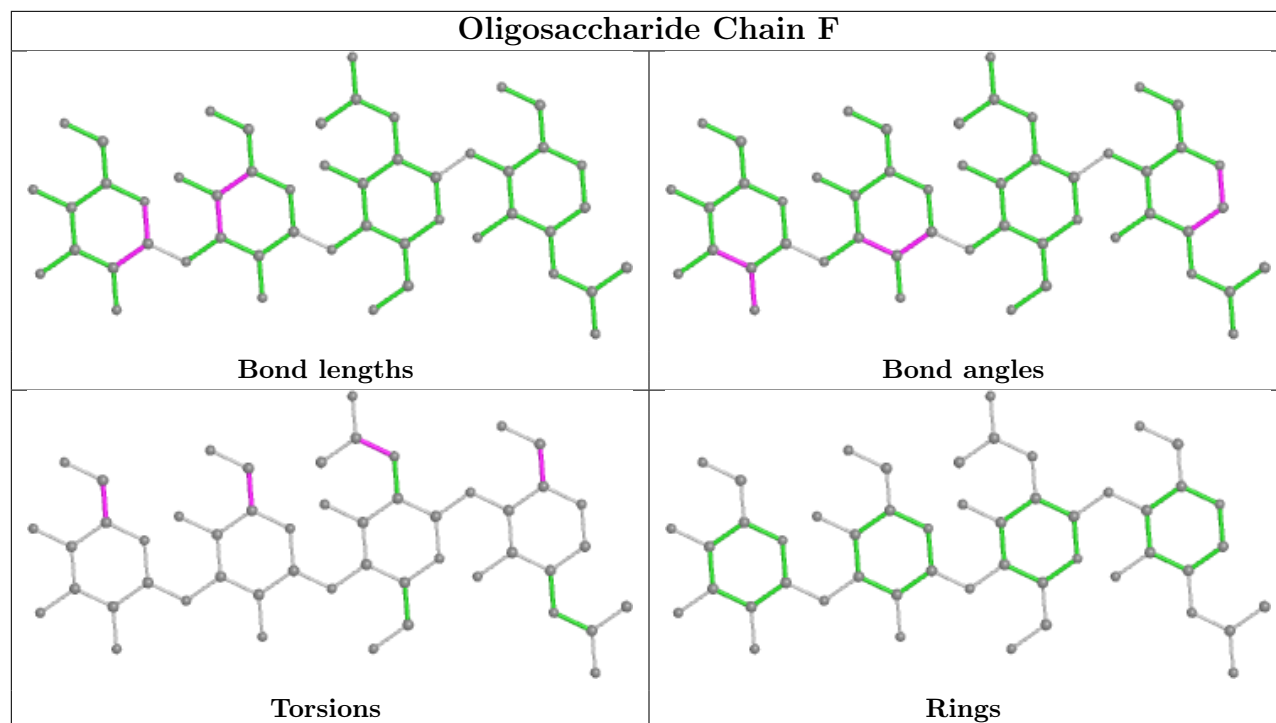


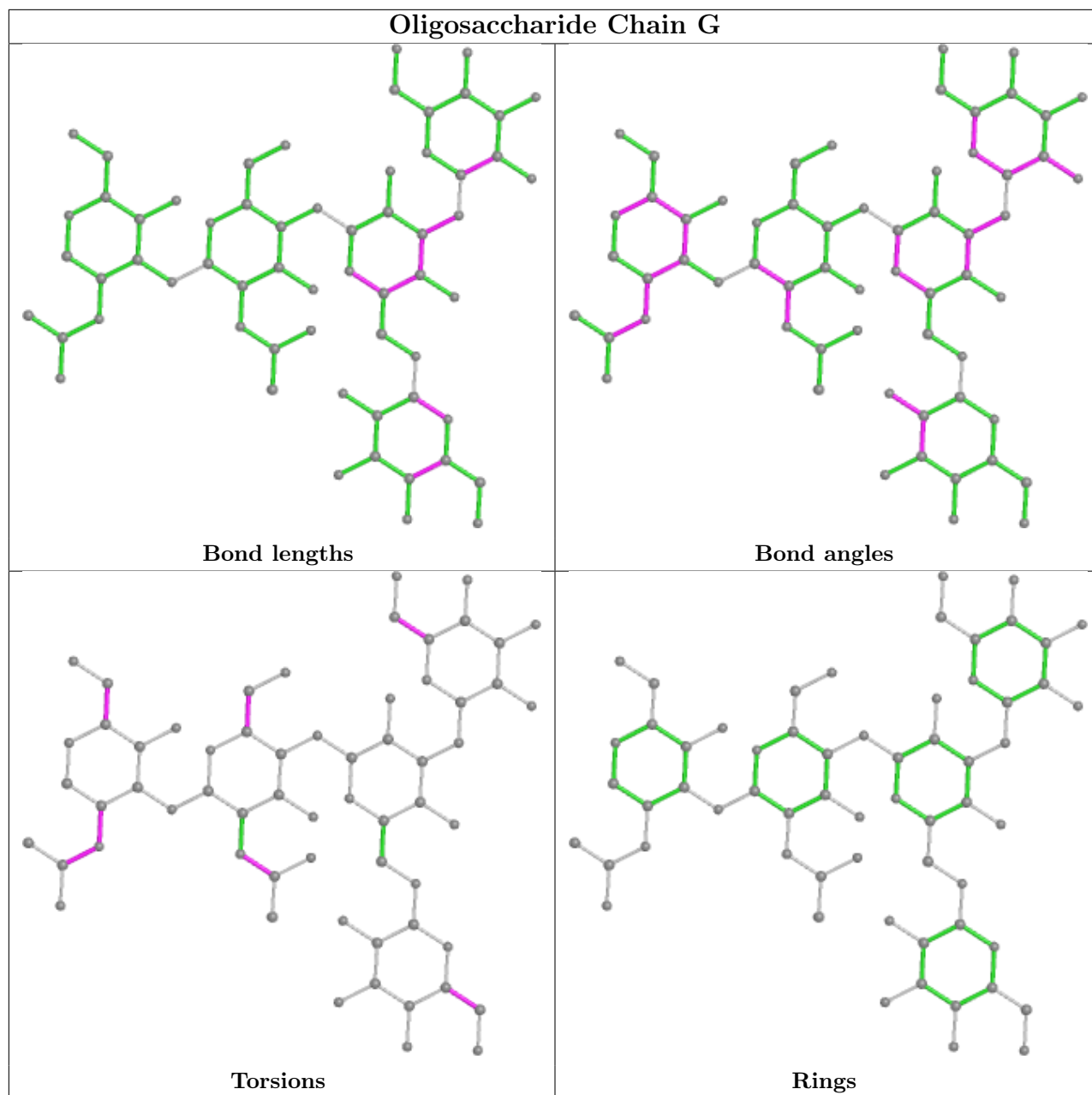












## 5.6 Ligand geometry [i](#)

2 ligands are modelled in this entry.

In the following table, the Counts columns list the number of bonds (or angles) for which Mogul statistics could be retrieved, the number of bonds (or angles) that are observed in the model and the number of bonds (or angles) that are defined in the Chemical Component Dictionary. The Link column lists molecule types, if any, to which the group is linked. The Z score for a bond length (or angle) is the number of standard deviations the observed value is removed from the expected value. A bond length (or angle) with  $|Z| > 2$  is considered an outlier worth inspection. RMSZ is the root-mean-square of all Z scores of the bond lengths (or angles).

Mol	Type	Chain	Res	Link	Bond lengths			Bond angles		
					Counts	RMSZ	# Z  > 2	Counts	RMSZ	# Z  > 2
9	NAG	C	702	1	14,14,15	0.50	0	17,19,21	0.79	1 (5%)
9	NAG	C	701	1	14,14,15	0.79	0	17,19,21	1.54	3 (17%)

In the following table, the Chirals column lists the number of chiral outliers, the number of chiral centers analysed, the number of these observed in the model and the number defined in the Chemical Component Dictionary. Similar counts are reported in the Torsion and Rings columns. '-' means no outliers of that kind were identified.

Mol	Type	Chain	Res	Link	Chirals	Torsions	Rings
9	NAG	C	702	1	-	4/6/23/26	0/1/1/1
9	NAG	C	701	1	-	1/6/23/26	0/1/1/1

There are no bond length outliers.

All (4) bond angle outliers are listed below:

Mol	Chain	Res	Type	Atoms	Z	Observed(°)	Ideal(°)
9	C	701	NAG	O5-C5-C6	4.21	113.81	107.20
9	C	701	NAG	C6-C5-C4	-2.70	106.68	113.00
9	C	701	NAG	O5-C1-C2	-2.38	107.53	111.29
9	C	702	NAG	O5-C5-C6	2.19	110.64	107.20

There are no chirality outliers.

All (5) torsion outliers are listed below:

Mol	Chain	Res	Type	Atoms
9	C	702	NAG	C8-C7-N2-C2
9	C	702	NAG	O7-C7-N2-C2
9	C	702	NAG	C1-C2-N2-C7
9	C	702	NAG	O5-C5-C6-O6
9	C	701	NAG	O5-C5-C6-O6

There are no ring outliers.

1 monomer is involved in 1 short contact:

Mol	Chain	Res	Type	Clashes	Symm-Clashes
9	C	701	NAG	1	0

## 5.7 Other polymers [i](#)

There are no such residues in this entry.

## 5.8 Polymer linkage issues [i](#)

There are no chain breaks in this entry.



## 6 Fit of model and data

### 6.1 Protein, DNA and RNA chains

In the following table, the column labelled ‘#RSRZ > 2’ contains the number (and percentage) of RSRZ outliers, followed by percent RSRZ outliers for the chain as percentile scores relative to all X-ray entries and entries of similar resolution. The OWAB column contains the minimum, median, 95<sup>th</sup> percentile and maximum values of the occupancy-weighted average B-factor per residue. The column labelled ‘Q < 0.9’ lists the number of (and percentage) of residues with an average occupancy less than 0.9.

Mol	Chain	Analysed	<RSRZ>	#RSRZ>2	OWAB(Å <sup>2</sup> )	Q<0.9
1	C	230/262 (87%)	0.22	6 (2%) 56 33	84, 111, 166, 196	0
2	H	201/241 (83%)	0.14	7 (3%) 44 23	90, 128, 202, 238	0
3	L	206/214 (96%)	0.24	11 (5%) 26 12	89, 137, 209, 258	0
All	All	637/717 (88%)	0.20	24 (3%) 40 20	84, 122, 197, 258	0

All (24) RSRZ outliers are listed below:

Mol	Chain	Res	Type	RSRZ
2	H	198	VAL	5.0
2	H	152	VAL	4.1
3	L	206	THR	3.5
3	L	192	TYR	3.3
3	L	195	GLU	3.1
3	L	126	LYS	2.9
3	L	132	VAL	2.8
2	H	120	SER	2.8
3	L	129	THR	2.7
1	C	492	ARG	2.7
3	L	125	LEU	2.5
3	L	187	GLU	2.4
2	H	82	LEU	2.4
3	L	127	SER	2.4
1	C	454	GLU	2.4
1	C	462	ILE	2.3
3	L	193	ALA	2.3
3	L	183	LYS	2.3
1	C	419	SER	2.3
2	H	141	LEU	2.2
2	H	199	ASN	2.2
2	H	182	VAL	2.1
1	C	579	LEU	2.1

*Continued on next page...*

*Continued from previous page...*

Mol	Chain	Res	Type	RSRZ
1	C	547	GLY	2.1

## 6.2 Non-standard residues in protein, DNA, RNA chains [i](#)

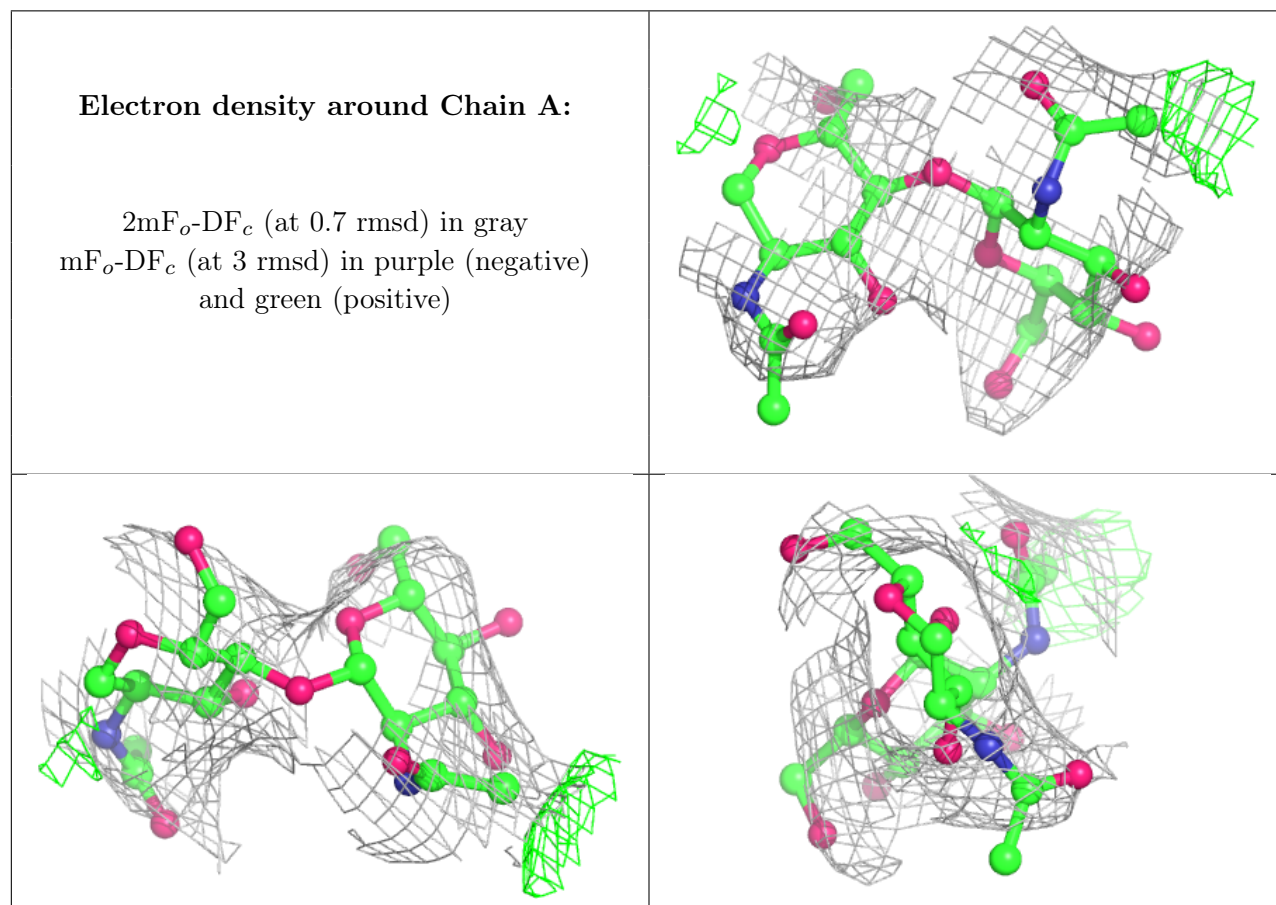
There are no non-standard protein/DNA/RNA residues in this entry.

## 6.3 Carbohydrates [i](#)

In the following table, the Atoms column lists the number of modelled atoms in the group and the number defined in the chemical component dictionary. The B-factors column lists the minimum, median, 95<sup>th</sup> percentile and maximum values of B factors of atoms in the group. The column labelled 'Q< 0.9' lists the number of atoms with occupancy less than 0.9.

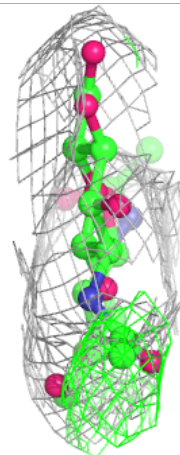
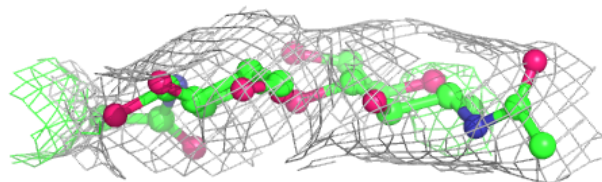
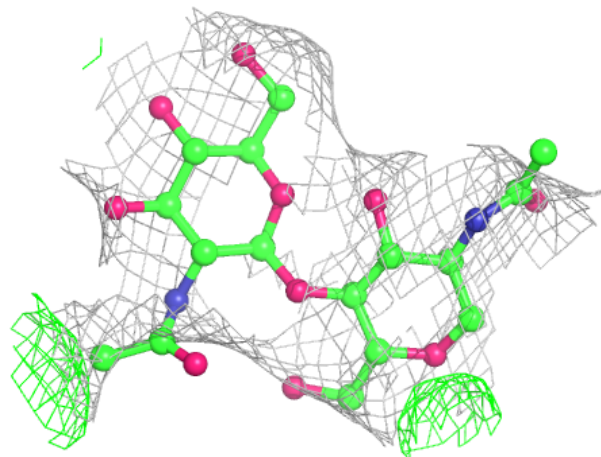
Mol	Type	Chain	Res	Atoms	RSCC	RSR	B-factors(Å <sup>2</sup> )	Q<0.9
7	MAN	F	4	11/12	0.61	0.27	188,197,209,209	0
8	MAN	G	5	11/12	0.65	0.18	172,184,186,189	0
4	NAG	B	2	14/15	0.68	0.28	148,160,173,177	0
8	MAN	G	4	11/12	0.72	0.35	182,192,196,197	0
7	BMA	F	3	11/12	0.73	0.28	161,179,189,196	0
5	NAG	D	2	14/15	0.74	0.30	159,167,178,182	0
8	BMA	G	3	11/12	0.78	0.23	184,188,190,191	0
6	MAN	E	8	11/12	0.80	0.20	133,146,152,154	0
5	BMA	D	3	11/12	0.81	0.27	171,180,183,183	0
4	NAG	A	2	14/15	0.81	0.24	157,166,172,177	0
8	NAG	G	2	14/15	0.81	0.38	143,154,169,181	0
4	NAG	A	1	14/15	0.83	0.21	147,156,163,164	0
6	MAN	E	5	11/12	0.84	0.17	118,125,134,136	0
4	NAG	I	1	14/15	0.88	0.27	123,138,145,149	0
4	NAG	B	1	14/15	0.89	0.18	130,141,156,160	0
6	MAN	E	4	11/12	0.89	0.23	123,132,138,138	0
7	NAG	F	2	14/15	0.90	0.17	137,149,166,170	0
4	NAG	I	2	14/15	0.90	0.14	138,159,164,165	0
7	NAG	F	1	14/15	0.90	0.20	114,129,135,139	0
8	NAG	G	1	14/15	0.90	0.23	111,123,140,154	0
6	MAN	E	7	11/12	0.91	0.22	118,129,134,134	0
5	NAG	D	1	14/15	0.92	0.23	121,132,155,159	0
6	BMA	E	3	11/12	0.93	0.13	104,113,122,131	0
6	MAN	E	6	11/12	0.95	0.11	115,126,139,146	0
6	NAG	E	1	14/15	0.95	0.14	104,109,114,120	0
6	NAG	E	2	14/15	0.96	0.16	102,107,113,116	0

The following is a graphical depiction of the model fit to experimental electron density for oligosaccharide. Each fit is shown from different orientation to approximate a three-dimensional view.



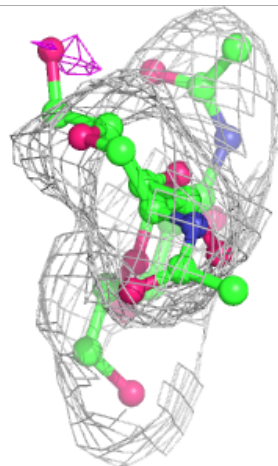
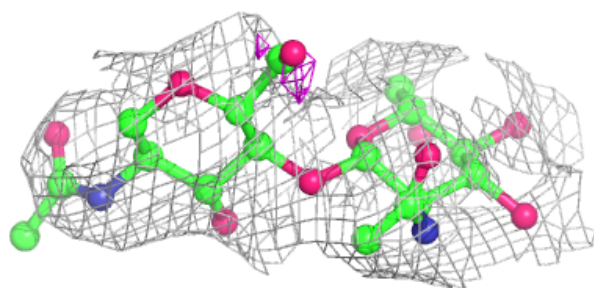
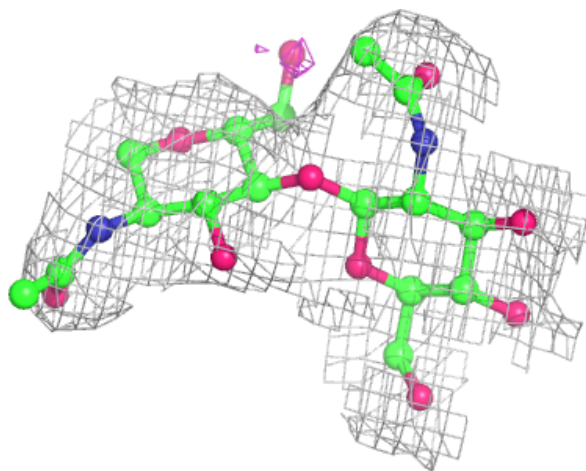
**Electron density around Chain B:**

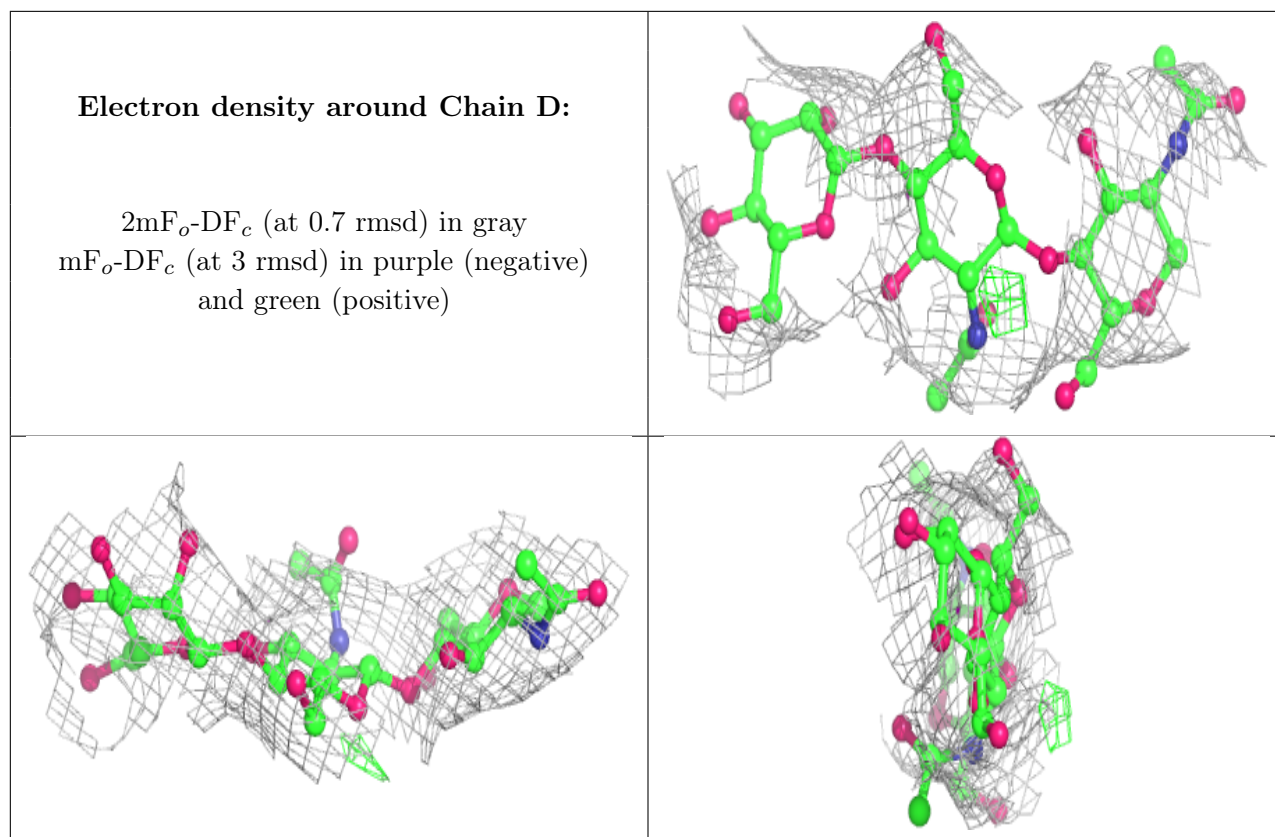
$2mF_o-DF_c$  (at 0.7 rmsd) in gray  
 $mF_o-DF_c$  (at 3 rmsd) in purple (negative)  
and green (positive)



**Electron density around Chain I:**

$2mF_o-DF_c$  (at 0.7 rmsd) in gray  
 $mF_o-DF_c$  (at 3 rmsd) in purple (negative)  
and green (positive)

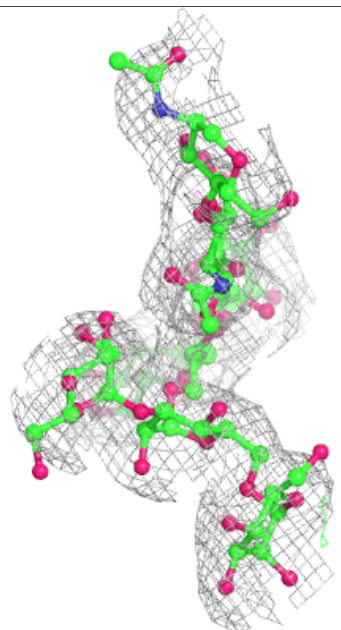
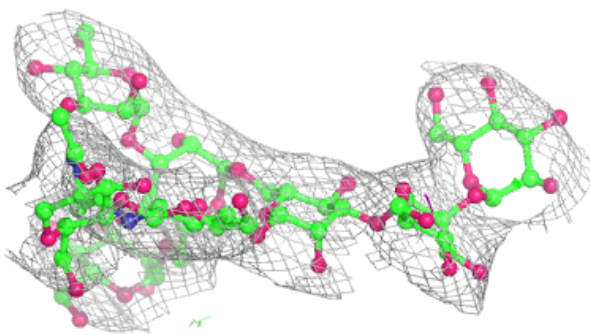
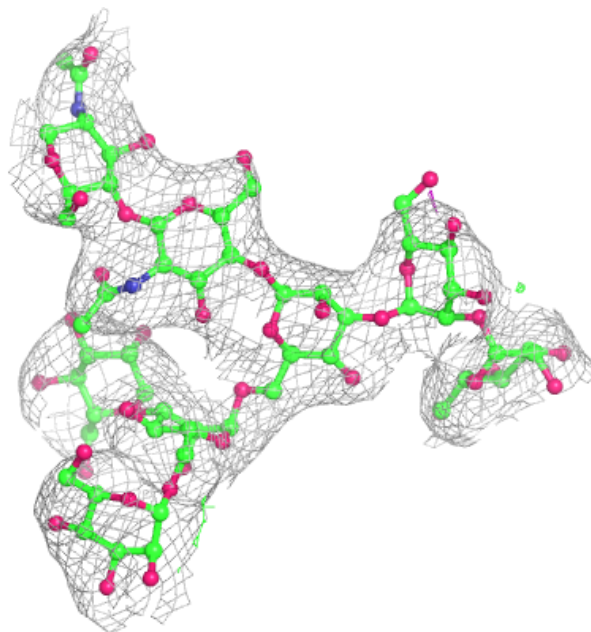






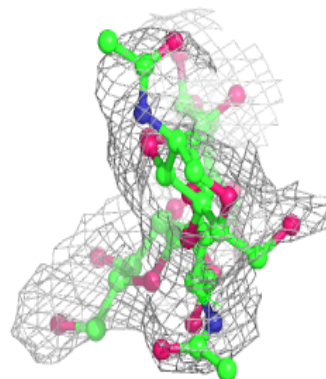
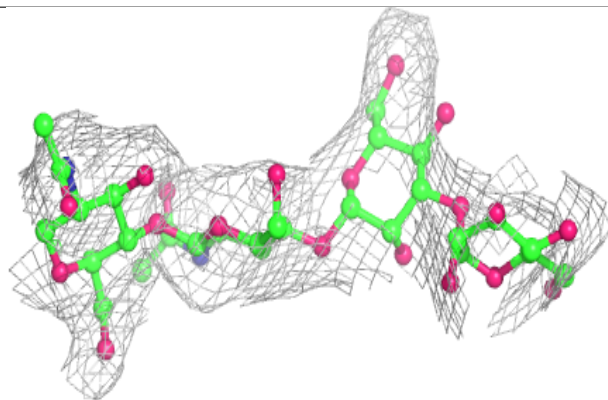
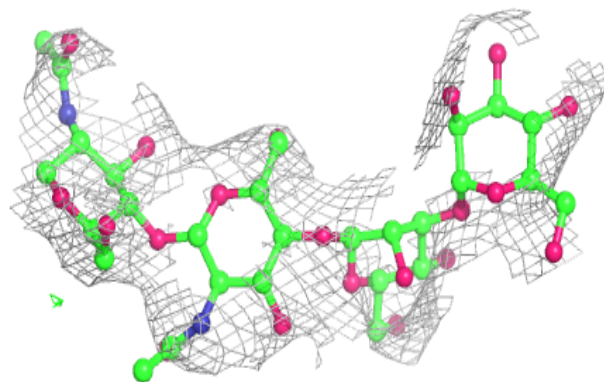
**Electron density around Chain E:**

$2mF_o-DF_c$  (at 0.7 rmsd) in gray  
 $mF_o-DF_c$  (at 3 rmsd) in purple (negative)  
and green (positive)

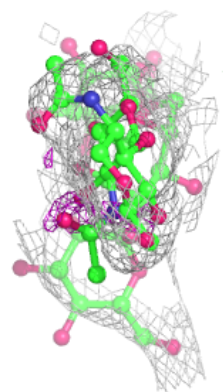
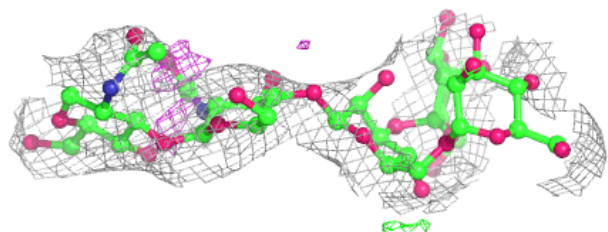
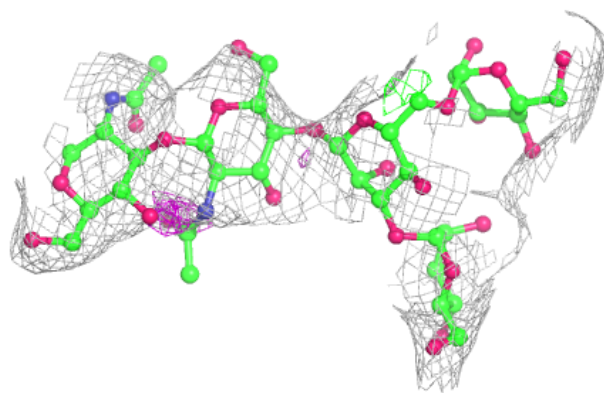


**Electron density around Chain F:**

$2mF_o-DF_c$  (at 0.7 rmsd) in gray  
 $mF_o-DF_c$  (at 3 rmsd) in purple (negative)  
and green (positive)

**Electron density around Chain G:**

$2mF_o-DF_c$  (at 0.7 rmsd) in gray  
 $mF_o-DF_c$  (at 3 rmsd) in purple (negative)  
and green (positive)





## 6.4 Ligands [i](#)

In the following table, the Atoms column lists the number of modelled atoms in the group and the number defined in the chemical component dictionary. The B-factors column lists the minimum, median, 95<sup>th</sup> percentile and maximum values of B factors of atoms in the group. The column labelled 'Q< 0.9' lists the number of atoms with occupancy less than 0.9.

Mol	Type	Chain	Res	Atoms	RSCC	RSR	B-factors(Å <sup>2</sup> )	Q<0.9
9	NAG	C	701	14/15	0.71	0.22	126,137,148,151	0
9	NAG	C	702	14/15	0.80	0.40	179,189,191,191	0

## 6.5 Other polymers [i](#)

There are no such residues in this entry.