



Full wwPDB X-ray Structure Validation Report ⓘ

Nov 22, 2023 – 08:57 PM JST

PDB ID : 7W1A
Title : Crystal Structure of MPH-E in complex with GMP and Azithromycin
Authors : Qi, Q.; Kuang, L.; Jiang, Y.
Deposited on : 2021-11-19
Resolution : 2.17 Å(reported)

This is a Full wwPDB X-ray Structure Validation Report for a publicly released PDB entry.

We welcome your comments at validation@mail.wwpdb.org

A user guide is available at

<https://www.wwpdb.org/validation/2017/XrayValidationReportHelp>

with specific help available everywhere you see the ⓘ symbol.

The types of validation reports are described at

<http://www.wwpdb.org/validation/2017/FAQs#types>.

The following versions of software and data (see [references ⓘ](#)) were used in the production of this report:

MolProbity : 4.02b-467
Mogul : 1.8.5 (274361), CSD as541be (2020)
Xtriage (Phenix) : 1.13
EDS : 2.36
buster-report : 1.1.7 (2018)
Percentile statistics : 20191225.v01 (using entries in the PDB archive December 25th 2019)
Refmac : 5.8.0158
CCP4 : 7.0.044 (Gargrove)
Ideal geometry (proteins) : Engh & Huber (2001)
Ideal geometry (DNA, RNA) : Parkinson et al. (1996)
Validation Pipeline (wwPDB-VP) : 2.36

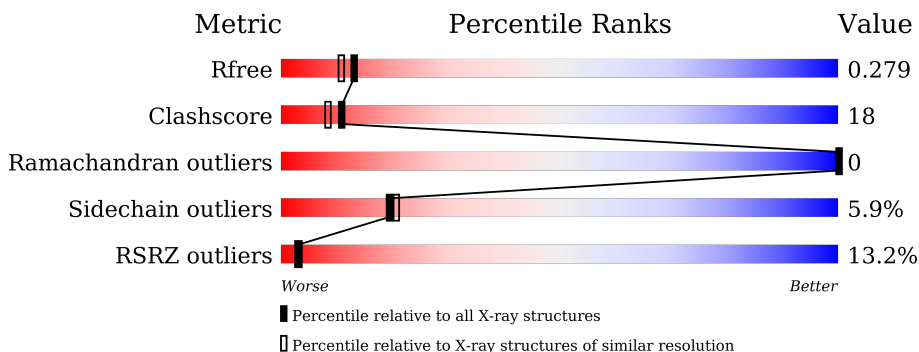
1 Overall quality at a glance

The following experimental techniques were used to determine the structure:

X-RAY DIFFRACTION

The reported resolution of this entry is 2.17 Å.

Percentile scores (ranging between 0-100) for global validation metrics of the entry are shown in the following graphic. The table shows the number of entries on which the scores are based.



Metric	Whole archive (#Entries)	Similar resolution (#Entries, resolution range(Å))
R_{free}	130704	6864 (2.20-2.16)
Clashscore	141614	7689 (2.20-2.16)
Ramachandran outliers	138981	7564 (2.20-2.16)
Sidechain outliers	138945	7564 (2.20-2.16)
RSRZ outliers	127900	6738 (2.20-2.16)

The table below summarises the geometric issues observed across the polymeric chains and their fit to the electron density. The red, orange, yellow and green segments of the lower bar indicate the fraction of residues that contain outliers for ≥ 3 , 2, 1 and 0 types of geometric quality criteria respectively. A grey segment represents the fraction of residues that are not modelled. The numeric value for each fraction is indicated below the corresponding segment, with a dot representing fractions $\leq 5\%$. The upper red bar (where present) indicates the fraction of residues that have poor fit to the electron density. The numeric value is given above the bar.

Mol	Chain	Length	Quality of chain
1	A	302	 15% 64% 28% • 5%
1	B	302	 11% 66% 27% • 5%

2 Entry composition i

There are 4 unique types of molecules in this entry. The entry contains 4836 atoms, of which 0 are hydrogens and 0 are deuteriums.

In the tables below, the ZeroOcc column contains the number of atoms modelled with zero occupancy, the AltConf column contains the number of residues with at least one atom in alternate conformation and the Trace column contains the number of residues modelled with at most 2 atoms.

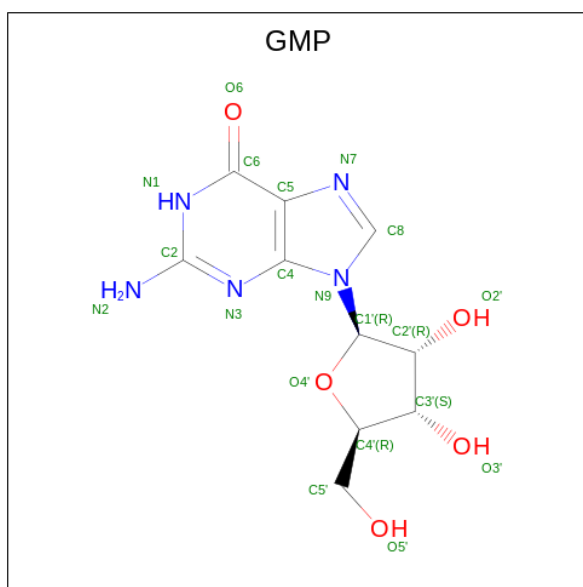
- Molecule 1 is a protein called Macrolide 2'-phosphotransferase.

Mol	Chain	Residues	Atoms					ZeroOcc	AltConf	Trace
			Total	C	N	O	S			
1	B	287	Total	C	N	O	S	0	0	0
			2308	1484	385	432	7			
1	A	287	Total	C	N	O	S	0	0	0
			2315	1483	386	439	7			

There are 16 discrepancies between the modelled and reference sequences:

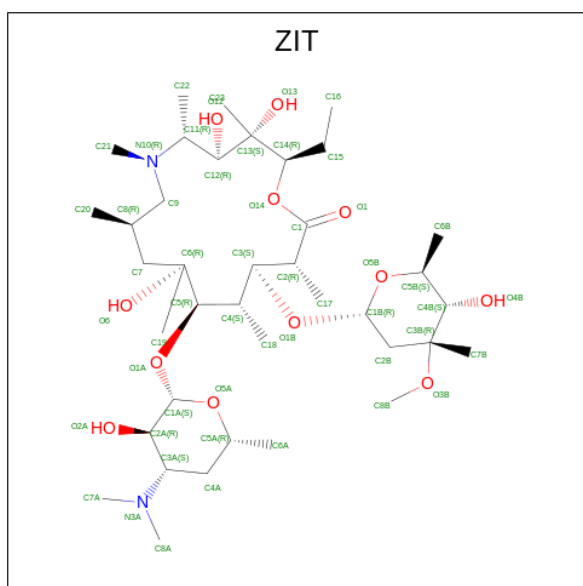
Chain	Residue	Modelled	Actual	Comment	Reference
B	295	LEU	-	expression tag	UNP A5Y459
B	296	GLU	-	expression tag	UNP A5Y459
B	297	HIS	-	expression tag	UNP A5Y459
B	298	HIS	-	expression tag	UNP A5Y459
B	299	HIS	-	expression tag	UNP A5Y459
B	300	HIS	-	expression tag	UNP A5Y459
B	301	HIS	-	expression tag	UNP A5Y459
B	302	HIS	-	expression tag	UNP A5Y459
A	295	LEU	-	expression tag	UNP A5Y459
A	296	GLU	-	expression tag	UNP A5Y459
A	297	HIS	-	expression tag	UNP A5Y459
A	298	HIS	-	expression tag	UNP A5Y459
A	299	HIS	-	expression tag	UNP A5Y459
A	300	HIS	-	expression tag	UNP A5Y459
A	301	HIS	-	expression tag	UNP A5Y459
A	302	HIS	-	expression tag	UNP A5Y459

- Molecule 2 is GUANOSINE (three-letter code: GMP) (formula: C₁₀H₁₃N₅O₅) (labeled as "Ligand of Interest" by depositor).



Mol	Chain	Residues	Atoms			ZeroOcc	AltConf	
2	B	1	Total	C	N	O	0	0
			20	10	5	5		
2	A	1	Total	C	N	O	0	0
			20	10	5	5		

- Molecule 3 is AZITHROMYCIN (three-letter code: ZIT) (formula: $C_{38}H_{72}N_2O_{12}$) (labeled as "Ligand of Interest" by depositor).



Mol	Chain	Residues	Atoms			ZeroOcc	AltConf	
3	B	1	Total	C	N	O	0	0
			52	38	2	12		

Continued on next page...

Continued from previous page...

Mol	Chain	Residues	Atoms				ZeroOcc	AltConf
			Total	C	N	O		
3	A	1	52	38	2	12	0	0

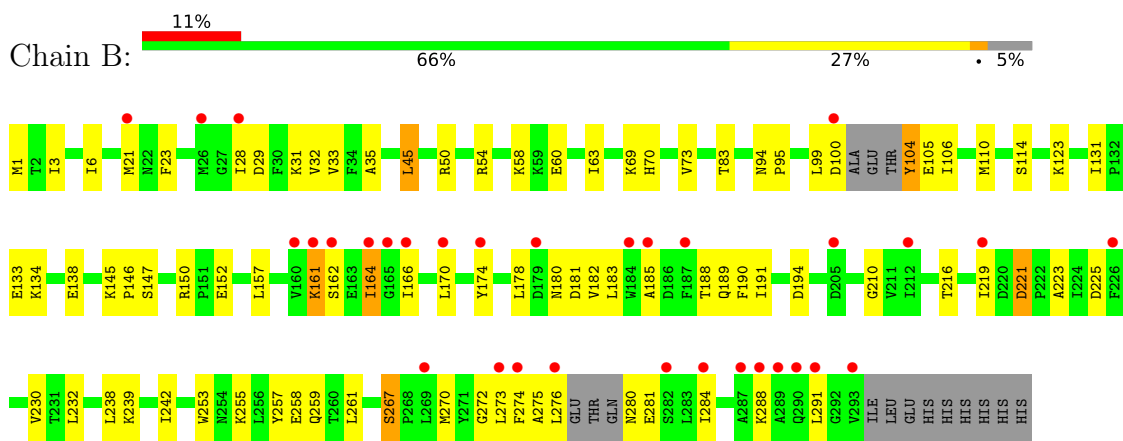
- Molecule 4 is water.

Mol	Chain	Residues	Atoms		ZeroOcc	AltConf
4	B	37	Total	O	0	0
			37	37		
4	A	32	Total	O	0	0
			32	32		

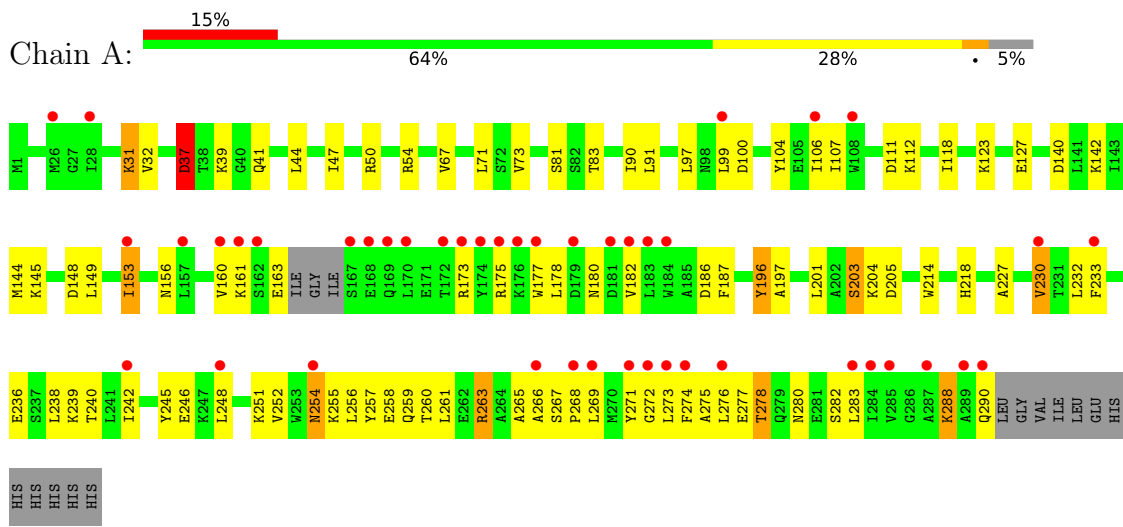
3 Residue-property plots [i](#)

These plots are drawn for all protein, RNA, DNA and oligosaccharide chains in the entry. The first graphic for a chain summarises the proportions of the various outlier classes displayed in the second graphic. The second graphic shows the sequence view annotated by issues in geometry and electron density. Residues are color-coded according to the number of geometric quality criteria for which they contain at least one outlier: green = 0, yellow = 1, orange = 2 and red = 3 or more. A red dot above a residue indicates a poor fit to the electron density (RSRZ > 2). Stretches of 2 or more consecutive residues without any outlier are shown as a green connector. Residues present in the sample, but not in the model, are shown in grey.

- Molecule 1: Macrolide 2'-phosphotransferase



- Molecule 1: Macrolide 2'-phosphotransferase



4 Data and refinement statistics

Property	Value	Source
Space group	P 1 21 1	Depositor
Cell constants a, b, c, α , β , γ	81.01Å 45.85Å 89.68Å 90.00° 105.71° 90.00°	Depositor
Resolution (Å)	40.49 – 2.17 40.49 – 2.17	Depositor EDS
% Data completeness (in resolution range)	98.9 (40.49-2.17) 98.9 (40.49-2.17)	Depositor EDS
R_{merge}	(Not available)	Depositor
R_{sym}	(Not available)	Depositor
$\langle I/\sigma(I) \rangle$ ¹	1.59 (at 2.18Å)	Xtrriage
Refinement program	PHENIX 1.20.1_4487	Depositor
R, R_{free}	0.254 , 0.283 0.253 , 0.279	Depositor DCC
R_{free} test set	2000 reflections (5.95%)	wwPDB-VP
Wilson B-factor (Å ²)	44.8	Xtrriage
Anisotropy	0.121	Xtrriage
Bulk solvent k_{sol} (e/Å ³), B_{sol} (Å ²)	0.34 , 52.4	EDS
L-test for twinning ²	$\langle L \rangle = 0.50$, $\langle L^2 \rangle = 0.33$	Xtrriage
Estimated twinning fraction	No twinning to report.	Xtrriage
F_o, F_c correlation	0.93	EDS
Total number of atoms	4836	wwPDB-VP
Average B, all atoms (Å ²)	66.0	wwPDB-VP

Xtrriage's analysis on translational NCS is as follows: *The largest off-origin peak in the Patterson function is 5.31% of the height of the origin peak. No significant pseudotranslation is detected.*

¹Intensities estimated from amplitudes.

²Theoretical values of $\langle |L| \rangle$, $\langle L^2 \rangle$ for acentric reflections are 0.5, 0.333 respectively for untwinned datasets, and 0.375, 0.2 for perfectly twinned datasets.

5 Model quality [i](#)

5.1 Standard geometry [i](#)

Bond lengths and bond angles in the following residue types are not validated in this section: ZIT, GMP

The Z score for a bond length (or angle) is the number of standard deviations the observed value is removed from the expected value. A bond length (or angle) with $|Z| > 5$ is considered an outlier worth inspection. RMSZ is the root-mean-square of all Z scores of the bond lengths (or angles).

Mol	Chain	Bond lengths		Bond angles	
		RMSZ	# $ Z > 5$	RMSZ	# $ Z > 5$
1	A	0.71	1/2361 (0.0%)	0.77	1/3194 (0.0%)
1	B	0.71	0/2353	0.79	1/3181 (0.0%)
All	All	0.71	1/4714 (0.0%)	0.78	2/6375 (0.0%)

Chiral center outliers are detected by calculating the chiral volume of a chiral center and verifying if the center is modelled as a planar moiety or with the opposite hand. A planarity outlier is detected by checking planarity of atoms in a peptide group, atoms in a mainchain group or atoms of a sidechain that are expected to be planar.

Mol	Chain	#Chirality outliers	#Planarity outliers
1	A	0	3
1	B	0	1
All	All	0	4

All (1) bond length outliers are listed below:

Mol	Chain	Res	Type	Atoms	Z	Observed(Å)	Ideal(Å)
1	A	37	ASP	CB-CG	-7.38	1.36	1.51

All (2) bond angle outliers are listed below:

Mol	Chain	Res	Type	Atoms	Z	Observed(°)	Ideal(°)
1	A	37	ASP	CB-CG-OD1	-9.30	109.93	118.30
1	B	45	LEU	CB-CG-CD1	6.33	121.75	111.00

There are no chirality outliers.

All (4) planarity outliers are listed below:

Mol	Chain	Res	Type	Group
1	A	173	ARG	Sidechain
1	A	175	ARG	Sidechain
1	A	263	ARG	Sidechain
1	B	50	ARG	Sidechain

5.2 Too-close contacts

In the following table, the Non-H and H(model) columns list the number of non-hydrogen atoms and hydrogen atoms in the chain respectively. The H(added) column lists the number of hydrogen atoms added and optimized by MolProbity. The Clashes column lists the number of clashes within the asymmetric unit, whereas Symm-Clashes lists symmetry-related clashes.

Mol	Chain	Non-H	H(model)	H(added)	Clashes	Symm-Clashes
1	A	2315	0	2327	98	0
1	B	2308	0	2335	78	0
2	A	20	0	13	1	0
2	B	20	0	13	1	0
3	A	52	0	72	17	0
3	B	52	0	72	14	0
4	A	32	0	0	1	0
4	B	37	0	0	0	0
All	All	4836	0	4832	175	0

The all-atom clashscore is defined as the number of clashes found per 1000 atoms (including hydrogen atoms). The all-atom clashscore for this structure is 18.

All (175) close contacts within the same asymmetric unit are listed below, sorted by their clash magnitude.

Atom-1	Atom-2	Interatomic distance (Å)	Clash overlap (Å)
1:A:271:TYR:CZ	3:A:402:ZIT:H201	1.80	1.15
1:B:232:LEU:CD2	3:B:402:ZIT:H161	1.77	1.14
1:B:232:LEU:HD21	3:B:402:ZIT:H161	1.33	1.07
1:A:271:TYR:CE1	3:A:402:ZIT:C20	2.47	0.98
1:A:156:ASN:HB3	1:A:273:LEU:HD11	1.48	0.96
1:A:271:TYR:CE1	3:A:402:ZIT:H201	2.02	0.94
1:A:271:TYR:CZ	3:A:402:ZIT:C20	2.59	0.85
1:A:271:TYR:HB2	3:A:402:ZIT:H191	1.59	0.83
1:A:156:ASN:O	1:A:160:VAL:HG23	1.78	0.82
1:B:272:GLY:CA	1:B:288:LYS:HD2	2.13	0.79
1:A:271:TYR:CE1	3:A:402:ZIT:H203	2.17	0.78
1:B:232:LEU:HD21	3:B:402:ZIT:C16	2.13	0.78

Continued on next page...

Continued from previous page...

Atom-1	Atom-2	Interatomic distance (Å)	Clash overlap (Å)
1:A:271:TYR:HB2	3:A:402:ZIT:C19	2.13	0.78
1:A:268:PRO:HB3	1:A:290:GLN:HB3	1.67	0.77
1:B:150:ARG:HG2	1:B:178:LEU:HD23	1.69	0.75
1:A:271:TYR:CG	3:A:402:ZIT:H191	2.22	0.74
1:A:145:LYS:HD3	1:A:148:ASP:OD2	1.88	0.73
1:B:21:MET:SD	1:B:33:VAL:HG11	2.29	0.73
1:B:99:LEU:HD13	3:B:402:ZIT:C23	2.19	0.72
1:A:149:LEU:O	1:A:153:ILE:HG22	1.90	0.71
1:A:271:TYR:CB	3:A:402:ZIT:H191	2.20	0.71
1:B:21:MET:HG2	1:B:35:ALA:HA	1.74	0.69
1:A:160:VAL:HG21	1:A:269:LEU:CD1	2.23	0.68
1:B:272:GLY:CA	1:B:288:LYS:CD	2.72	0.67
1:B:106:ILE:HD12	1:B:106:ILE:H	1.60	0.66
1:A:257:TYR:CE2	1:A:261:LEU:HD11	2.30	0.66
1:A:255:LYS:HE3	1:A:258:GLU:OE1	1.95	0.66
1:B:281:GLU:HG2	1:B:284:ILE:H	1.60	0.66
1:B:182:VAL:HG22	1:B:255:LYS:HG3	1.78	0.65
1:A:180:ASN:OD1	1:A:182:VAL:HG12	1.97	0.65
1:A:145:LYS:N	1:A:145:LYS:HD2	2.12	0.64
1:A:271:TYR:CD2	3:A:402:ZIT:H213	2.33	0.64
1:A:265:ALA:O	1:A:268:PRO:HD2	1.97	0.64
1:A:100:ASP:HB2	1:A:107:ILE:HD11	1.80	0.63
1:A:160:VAL:HG21	1:A:269:LEU:HD11	1.81	0.63
1:B:194:ASP:HB2	1:B:216:THR:HG21	1.80	0.63
1:B:232:LEU:CD2	3:B:402:ZIT:C16	2.67	0.62
1:A:238:LEU:HD11	1:A:260:THR:HG21	1.82	0.62
1:A:156:ASN:HB3	1:A:273:LEU:CD1	2.29	0.62
1:B:232:LEU:HG	3:B:402:ZIT:C16	2.30	0.61
1:A:32:VAL:HG21	2:A:401:GMP:H5'1	1.83	0.60
1:A:177:TRP:HZ3	1:A:266:ALA:HB2	1.66	0.60
1:B:145:LYS:HD2	1:B:146:PRO:HD3	1.83	0.59
1:B:272:GLY:HA3	1:B:288:LYS:CD	2.33	0.59
1:A:271:TYR:CD2	3:A:402:ZIT:H8	2.38	0.58
1:A:112:LYS:HE2	1:A:232:LEU:O	2.04	0.58
1:B:232:LEU:CG	3:B:402:ZIT:H161	2.33	0.57
1:B:32:VAL:HG21	2:B:401:GMP:H5'1	1.87	0.57
1:B:273:LEU:HD12	1:B:274:PHE:N	2.21	0.56
1:A:255:LYS:HE3	1:A:255:LYS:HA	1.86	0.56
1:A:97:LEU:CD2	1:A:197:ALA:HB3	2.36	0.56
1:A:271:TYR:OH	3:A:402:ZIT:H201	2.06	0.56
1:A:71:LEU:HD12	1:A:73:VAL:HG22	1.88	0.55

Continued on next page...

Continued from previous page...

Atom-1	Atom-2	Interatomic distance (Å)	Clash overlap (Å)
1:B:270:MET:CE	1:B:273:LEU:HD21	2.36	0.55
1:B:232:LEU:HD23	3:B:402:ZIT:H161	1.83	0.55
1:A:203:SER:HB3	1:A:205:ASP:OD1	2.07	0.55
1:B:275:ALA:O	1:B:280:ASN:N	2.40	0.54
1:B:28:ILE:HG13	3:B:402:ZIT:C8A	2.37	0.54
1:B:69:LYS:HB2	1:B:70:HIS:ND1	2.22	0.54
1:A:160:VAL:HG22	1:A:273:LEU:CD2	2.38	0.54
1:A:97:LEU:HD23	1:A:197:ALA:HB3	1.90	0.54
1:A:245:TYR:HA	1:A:248:LEU:HD12	1.90	0.54
1:A:44:LEU:HB2	1:A:90:ILE:HD13	1.91	0.53
1:B:232:LEU:CG	3:B:402:ZIT:C16	2.87	0.53
1:A:259:GLN:O	1:A:263:ARG:HG2	2.09	0.53
1:B:99:LEU:HD13	3:B:402:ZIT:H231	1.89	0.53
1:B:267:SER:OG	3:B:402:ZIT:O5B	2.27	0.53
1:B:189:GLN:O	1:B:191:ILE:HG23	2.09	0.53
1:B:134:LYS:HE3	1:B:138:GLU:OE2	2.08	0.53
1:A:252:VAL:HG13	1:A:256:LEU:HD23	1.89	0.53
1:B:1:MET:HB2	1:B:31:LYS:HE2	1.91	0.53
1:B:257:TYR:CE2	1:B:261:LEU:HD11	2.44	0.52
1:B:272:GLY:N	1:B:288:LYS:HD2	2.24	0.52
1:A:142:LYS:O	1:A:218:HIS:HB2	2.09	0.52
1:A:160:VAL:HG11	1:A:269:LEU:HD12	1.91	0.52
1:A:238:LEU:O	1:A:242:ILE:HG13	2.10	0.52
1:A:257:TYR:CZ	1:A:261:LEU:HD11	2.45	0.52
1:A:236:GLU:HA	1:A:239:LYS:HG3	1.92	0.51
1:A:177:TRP:CZ3	1:A:266:ALA:HB2	2.44	0.51
1:A:187:PHE:CG	1:A:251:LYS:HE3	2.45	0.51
1:B:272:GLY:HA2	1:B:288:LYS:HD2	1.92	0.51
1:A:204:LYS:HA	4:A:505:HOH:O	2.11	0.50
1:A:160:VAL:HG22	1:A:273:LEU:HD23	1.93	0.50
1:A:118:ILE:HG21	1:A:240:THR:HG22	1.92	0.50
1:A:153:ILE:HG12	1:A:178:LEU:HD21	1.94	0.50
1:B:170:LEU:HD22	1:B:174:TYR:CZ	2.46	0.50
1:A:100:ASP:O	1:A:104:TYR:N	2.40	0.50
1:B:190:PHE:HA	1:B:219:ILE:HA	1.93	0.49
1:B:60:GLU:HA	1:B:63:ILE:HD12	1.93	0.49
1:B:28:ILE:HG13	3:B:402:ZIT:H8A3	1.93	0.49
1:A:257:TYR:O	1:A:261:LEU:HG	2.13	0.49
1:B:238:LEU:O	1:B:242:ILE:HG13	2.12	0.49
1:B:21:MET:SD	1:B:33:VAL:CG1	3.00	0.49
1:A:123:LYS:O	1:A:127:GLU:HG3	2.12	0.49

Continued on next page...

Continued from previous page...

Atom-1	Atom-2	Interatomic distance (Å)	Clash overlap (Å)
1:A:271:TYR:CE2	3:A:402:ZIT:H8	2.48	0.48
1:B:270:MET:HE2	1:B:273:LEU:HD21	1.94	0.48
1:A:144:MET:HB3	1:A:149:LEU:CD2	2.43	0.48
1:A:106:ILE:HD11	3:A:402:ZIT:H151	1.94	0.48
1:A:112:LYS:HE2	1:A:233:PHE:HA	1.95	0.48
1:A:97:LEU:HD13	1:A:106:ILE:HG23	1.96	0.48
1:A:37:ASP:HB3	1:A:39:LYS:H	1.77	0.48
1:B:104:TYR:CD1	1:B:105:GLU:N	2.82	0.48
1:B:273:LEU:HD12	1:B:273:LEU:C	2.33	0.47
1:A:230:VAL:CG2	1:A:238:LEU:HD13	2.43	0.47
1:A:160:VAL:HG21	1:A:269:LEU:HD12	1.94	0.47
1:B:133:GLU:HG3	1:B:219:ILE:HD13	1.97	0.47
1:A:272:GLY:O	1:A:276:LEU:HG	2.14	0.47
1:B:183:LEU:HD22	1:B:259:GLN:CA	2.45	0.47
1:B:157:LEU:O	1:B:157:LEU:HD12	2.15	0.46
1:A:160:VAL:CG2	1:A:269:LEU:HD11	2.46	0.46
1:A:271:TYR:CE2	3:A:402:ZIT:H213	2.50	0.46
1:B:150:ARG:O	1:B:178:LEU:HD21	2.16	0.46
1:A:163:GLU:O	1:A:288:LYS:NZ	2.45	0.46
1:B:183:LEU:HD21	1:B:258:GLU:HB3	1.98	0.45
1:B:275:ALA:C	1:B:276:LEU:HD23	2.37	0.45
1:B:6:ILE:CD1	1:B:23:PHE:HE2	2.29	0.45
1:A:271:TYR:CD1	3:A:402:ZIT:H203	2.49	0.45
1:A:254:ASN:N	1:A:254:ASN:OD1	2.50	0.45
1:A:275:ALA:O	1:A:278:THR:HG22	2.16	0.45
1:A:31:LYS:HG2	1:A:47:ILE:HB	1.98	0.45
1:A:37:ASP:HB2	1:A:41:GLN:O	2.16	0.45
1:B:183:LEU:HD22	1:B:259:GLN:HA	2.00	0.44
1:B:257:TYR:O	1:B:261:LEU:HG	2.17	0.44
1:A:99:LEU:CD2	1:A:106:ILE:HD13	2.47	0.44
1:A:145:LYS:N	1:A:145:LYS:CD	2.79	0.44
1:A:259:GLN:HA	1:A:259:GLN:OE1	2.17	0.44
1:B:185:ALA:HB2	1:B:253:TRP:CZ2	2.53	0.44
1:B:73:VAL:HB	1:B:210:GLY:HA2	2.00	0.44
1:B:221:ASP:OD2	1:B:223:ALA:HB3	2.17	0.44
1:B:232:LEU:HG	3:B:402:ZIT:H163	1.99	0.44
1:B:3:ILE:HG23	1:B:21:MET:HE2	1.99	0.44
1:B:150:ARG:CG	1:B:178:LEU:HD23	2.42	0.44
1:A:280:ASN:HB3	1:A:283:LEU:HD12	1.99	0.43
1:A:54:ARG:HB2	1:A:83:THR:HG22	2.00	0.43
1:A:182:VAL:HG13	1:A:255:LYS:HG3	1.99	0.43

Continued on next page...

Continued from previous page...

Atom-1	Atom-2	Interatomic distance (Å)	Clash overlap (Å)
1:B:54:ARG:HB2	1:B:83:THR:HG22	2.01	0.43
1:A:160:VAL:CG2	1:A:273:LEU:HD21	2.48	0.43
1:B:123:LYS:HE3	1:A:205:ASP:OD2	2.19	0.43
1:A:238:LEU:HD22	1:A:257:TYR:HD1	1.84	0.43
1:B:194:ASP:HB2	1:B:216:THR:CG2	2.48	0.43
1:B:239:LYS:HD2	1:B:257:TYR:CE1	2.53	0.43
1:A:230:VAL:HB	1:A:238:LEU:HD12	2.01	0.43
1:A:227:ALA:O	1:A:230:VAL:HG12	2.18	0.43
1:B:33:VAL:HB	1:B:45:LEU:HB2	2.01	0.43
1:A:246:GLU:HG2	1:A:252:VAL:HG21	2.00	0.43
1:B:270:MET:HE3	1:B:273:LEU:HD21	2.01	0.42
1:B:288:LYS:O	1:B:291:LEU:N	2.52	0.42
1:A:106:ILE:C	1:A:107:ILE:HG13	2.39	0.42
1:B:230:VAL:HG23	1:B:238:LEU:HB2	2.01	0.42
1:B:272:GLY:HA2	1:B:288:LYS:CD	2.45	0.42
1:B:164:ILE:HD12	1:B:288:LYS:HD3	2.01	0.42
1:B:272:GLY:HA3	1:B:288:LYS:CE	2.48	0.42
1:A:274:PHE:O	1:A:278:THR:N	2.51	0.42
1:A:99:LEU:HD21	1:A:106:ILE:HD13	2.01	0.42
1:B:70:HIS:CD2	1:B:131:ILE:HG12	2.54	0.42
1:B:110:MET:HE3	1:B:114:SER:HB3	2.01	0.42
1:B:161:LYS:HG3	1:B:166:ILE:HG22	2.01	0.42
1:A:187:PHE:CD1	1:A:251:LYS:HE3	2.55	0.42
1:A:230:VAL:HG23	1:A:238:LEU:CD1	2.50	0.42
1:A:230:VAL:HG23	1:A:238:LEU:HD13	2.02	0.42
1:B:99:LEU:HD23	1:B:106:ILE:HA	2.02	0.42
1:B:170:LEU:HD22	1:B:174:TYR:OH	2.19	0.42
1:A:278:THR:HG23	1:A:280:ASN:N	2.35	0.41
1:A:187:PHE:CD2	1:A:251:LYS:HD3	2.55	0.41
1:A:91:LEU:HD12	1:A:201:LEU:HD11	2.02	0.41
1:B:180:ASN:N	1:B:180:ASN:OD1	2.53	0.41
1:A:255:LYS:HA	1:A:255:LYS:CE	2.50	0.41
1:B:94:ASN:HB3	1:B:95:PRO:HD2	2.03	0.41
1:A:187:PHE:CE2	1:A:251:LYS:HG2	2.56	0.41
1:A:111:ASP:O	1:A:112:LYS:C	2.60	0.40
1:B:6:ILE:HD11	1:B:23:PHE:HE2	1.87	0.40
1:B:146:PRO:HG3	1:B:188:THR:HG23	2.03	0.40
1:A:67:VAL:HG11	1:A:214:TRP:CZ3	2.56	0.40
1:A:160:VAL:CG2	1:A:273:LEU:CD2	3.00	0.40
1:A:196:TYR:HB3	3:A:402:ZIT:C8B	2.52	0.40

There are no symmetry-related clashes.

5.3 Torsion angles [i](#)

5.3.1 Protein backbone [i](#)

In the following table, the Percentiles column shows the percent Ramachandran outliers of the chain as a percentile score with respect to all X-ray entries followed by that with respect to entries of similar resolution.

The Analysed column shows the number of residues for which the backbone conformation was analysed, and the total number of residues.

Mol	Chain	Analysed	Favoured	Allowed	Outliers	Percentiles	
1	A	283/302 (94%)	275 (97%)	8 (3%)	0	100	100
1	B	281/302 (93%)	269 (96%)	12 (4%)	0	100	100
All	All	564/604 (93%)	544 (96%)	20 (4%)	0	100	100

There are no Ramachandran outliers to report.

5.3.2 Protein sidechains [i](#)

In the following table, the Percentiles column shows the percent sidechain outliers of the chain as a percentile score with respect to all X-ray entries followed by that with respect to entries of similar resolution.

The Analysed column shows the number of residues for which the sidechain conformation was analysed, and the total number of residues.

Mol	Chain	Analysed	Rotameric	Outliers	Percentiles	
1	A	253/266 (95%)	236 (93%)	17 (7%)	16	16
1	B	252/266 (95%)	239 (95%)	13 (5%)	23	26
All	All	505/532 (95%)	475 (94%)	30 (6%)	19	21

All (30) residues with a non-rotameric sidechain are listed below:

Mol	Chain	Res	Type
1	B	29	ASP
1	B	58	LYS
1	B	100	ASP
1	B	104	TYR
1	B	147	SER
1	B	152	GLU
1	B	161	LYS
1	B	162	SER

Continued on next page...

Continued from previous page...

Mol	Chain	Res	Type
1	B	164	ILE
1	B	181	ASP
1	B	221	ASP
1	B	225	ASP
1	B	267	SER
1	A	31	LYS
1	A	37	ASP
1	A	50	ARG
1	A	81	SER
1	A	140	ASP
1	A	153	ILE
1	A	161	LYS
1	A	186	ASP
1	A	196	TYR
1	A	203	SER
1	A	230	VAL
1	A	254	ASN
1	A	267	SER
1	A	277	GLU
1	A	278	THR
1	A	282	SER
1	A	288	LYS

Sometimes sidechains can be flipped to improve hydrogen bonding and reduce clashes. All (1) such sidechains are listed below:

Mol	Chain	Res	Type
1	A	98	ASN

5.3.3 RNA [i](#)

There are no RNA molecules in this entry.

5.4 Non-standard residues in protein, DNA, RNA chains [i](#)

There are no non-standard protein/DNA/RNA residues in this entry.

5.5 Carbohydrates [i](#)

There are no monosaccharides in this entry.

5.6 Ligand geometry

4 ligands are modelled in this entry.

In the following table, the Counts columns list the number of bonds (or angles) for which Mogul statistics could be retrieved, the number of bonds (or angles) that are observed in the model and the number of bonds (or angles) that are defined in the Chemical Component Dictionary. The Link column lists molecule types, if any, to which the group is linked. The Z score for a bond length (or angle) is the number of standard deviations the observed value is removed from the expected value. A bond length (or angle) with $|Z| > 2$ is considered an outlier worth inspection. RMSZ is the root-mean-square of all Z scores of the bond lengths (or angles).

Mol	Type	Chain	Res	Link	Bond lengths			Bond angles		
					Counts	RMSZ	# Z > 2	Counts	RMSZ	# Z > 2
3	ZIT	B	402	-	54,54,54	0.86	3 (5%)	82,83,83	1.76	16 (19%)
2	GMP	B	401	-	18,22,22	1.16	1 (5%)	19,33,33	1.56	5 (26%)
2	GMP	A	401	-	18,22,22	1.13	2 (11%)	19,33,33	1.43	2 (10%)
3	ZIT	A	402	-	54,54,54	0.85	3 (5%)	82,83,83	1.75	16 (19%)

In the following table, the Chirals column lists the number of chiral outliers, the number of chiral centers analysed, the number of these observed in the model and the number defined in the Chemical Component Dictionary. Similar counts are reported in the Torsion and Rings columns. '-' means no outliers of that kind were identified.

Mol	Type	Chain	Res	Link	Chirals	Torsions	Rings
3	ZIT	B	402	-	-	2/72/107/107	0/3/3/3
2	GMP	B	401	-	-	0/2/22/22	0/3/3/3
2	GMP	A	401	-	-	0/2/22/22	0/3/3/3
3	ZIT	A	402	-	-	2/72/107/107	0/3/3/3

All (9) bond length outliers are listed below:

Mol	Chain	Res	Type	Atoms	Z	Observed(Å)	Ideal(Å)
2	B	401	GMP	C5-C6	-3.70	1.39	1.47
2	A	401	GMP	C8-N7	-3.42	1.29	1.35
3	B	402	ZIT	C21-N10	2.32	1.51	1.46
3	A	402	ZIT	C21-N10	2.26	1.51	1.46
2	A	401	GMP	C5-C4	-2.24	1.37	1.43
3	B	402	ZIT	C4-C3	-2.24	1.48	1.54
3	A	402	ZIT	C4-C3	-2.21	1.48	1.54
3	B	402	ZIT	O5B-C5B	-2.05	1.39	1.44
3	A	402	ZIT	O5B-C5B	-2.03	1.39	1.44

All (39) bond angle outliers are listed below:

Mol	Chain	Res	Type	Atoms	Z	Observed(°)	Ideal(°)
3	A	402	ZIT	O5B-C5B-C6B	5.25	118.03	106.70
3	B	402	ZIT	O5B-C5B-C6B	5.21	117.94	106.70
3	A	402	ZIT	C6-C5-C4	4.87	120.94	114.05
3	B	402	ZIT	C6-C5-C4	4.85	120.91	114.05
3	A	402	ZIT	C1A-O1A-C5	4.81	124.62	116.25
3	B	402	ZIT	C1A-O1A-C5	4.81	124.61	116.25
3	B	402	ZIT	O5B-C5B-C4B	4.49	118.05	110.03
3	A	402	ZIT	O5B-C5B-C4B	4.45	117.98	110.03
3	B	402	ZIT	C3-C4-C5	4.33	120.51	111.19
3	A	402	ZIT	C3-C4-C5	4.30	120.44	111.19
2	B	401	GMP	O6-C6-C5	4.12	132.41	124.37
2	A	401	GMP	O6-C6-C5	4.06	132.30	124.37
3	B	402	ZIT	O1A-C5-C6	4.01	111.34	106.39
3	A	402	ZIT	O1A-C5-C6	3.98	111.30	106.39
3	B	402	ZIT	C3B-C2B-C1B	3.65	121.40	115.07
3	B	402	ZIT	C23-C13-C12	-3.65	106.66	113.05
3	A	402	ZIT	C3B-C2B-C1B	3.64	121.38	115.07
3	A	402	ZIT	C23-C13-C12	-3.62	106.71	113.05
2	A	401	GMP	O6-C6-N1	-3.33	116.72	120.65
3	B	402	ZIT	O5B-C1B-C2B	-3.19	106.05	112.12
3	A	402	ZIT	O5B-C1B-C2B	-3.19	106.05	112.12
3	A	402	ZIT	C1B-O5B-C5B	2.92	121.70	113.84
3	B	402	ZIT	C1B-O5B-C5B	2.90	121.64	113.84
2	B	401	GMP	O6-C6-N1	-2.65	117.53	120.65
2	B	401	GMP	N2-C2-N3	2.49	124.58	119.74
3	A	402	ZIT	C21-N10-C11	2.39	117.93	113.59
3	B	402	ZIT	O1B-C3-C4	-2.38	105.36	108.22
3	A	402	ZIT	O1B-C3-C4	-2.36	105.37	108.22
3	B	402	ZIT	C21-N10-C11	2.36	117.88	113.59
3	B	402	ZIT	C5A-C4A-C3A	-2.28	106.46	110.46
3	A	402	ZIT	C5A-C4A-C3A	-2.24	106.53	110.46
2	B	401	GMP	C5-C6-N1	-2.22	110.04	113.95
3	A	402	ZIT	C6B-C5B-C4B	2.20	116.31	112.57
3	B	402	ZIT	C6B-C5B-C4B	2.18	116.28	112.57
3	B	402	ZIT	O1A-C5-C4	2.14	114.75	111.54
3	A	402	ZIT	O1A-C5-C4	2.13	114.73	111.54
3	A	402	ZIT	O14-C14-C13	2.04	110.62	107.29
3	B	402	ZIT	O14-C14-C13	2.04	110.61	107.29
2	B	401	GMP	C2-N1-C6	2.02	128.81	125.10

There are no chirality outliers.

All (4) torsion outliers are listed below:

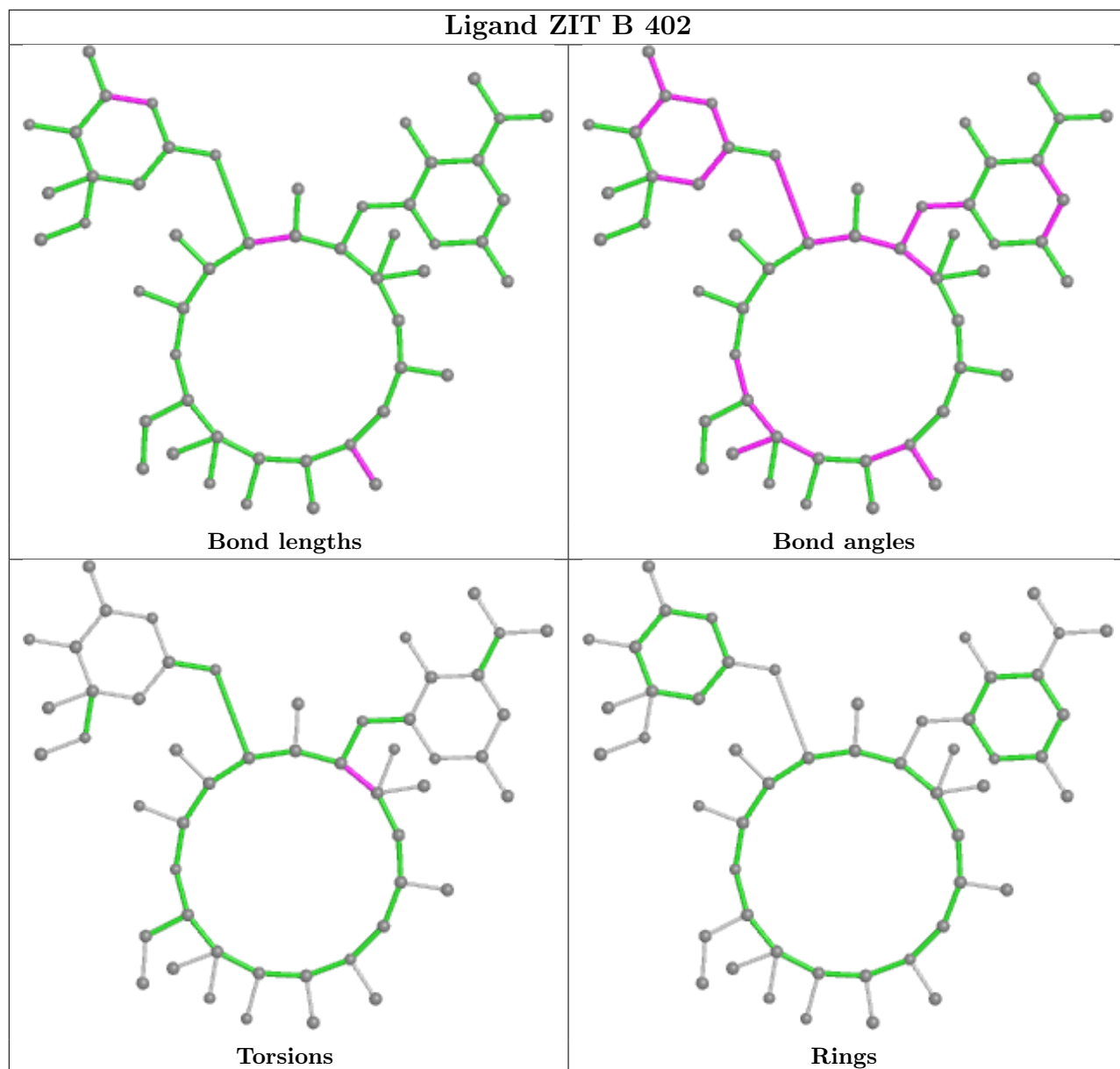
Mol	Chain	Res	Type	Atoms
3	B	402	ZIT	C4-C5-C6-C7
3	B	402	ZIT	C4-C5-C6-C19
3	A	402	ZIT	C4-C5-C6-C7
3	A	402	ZIT	C4-C5-C6-C19

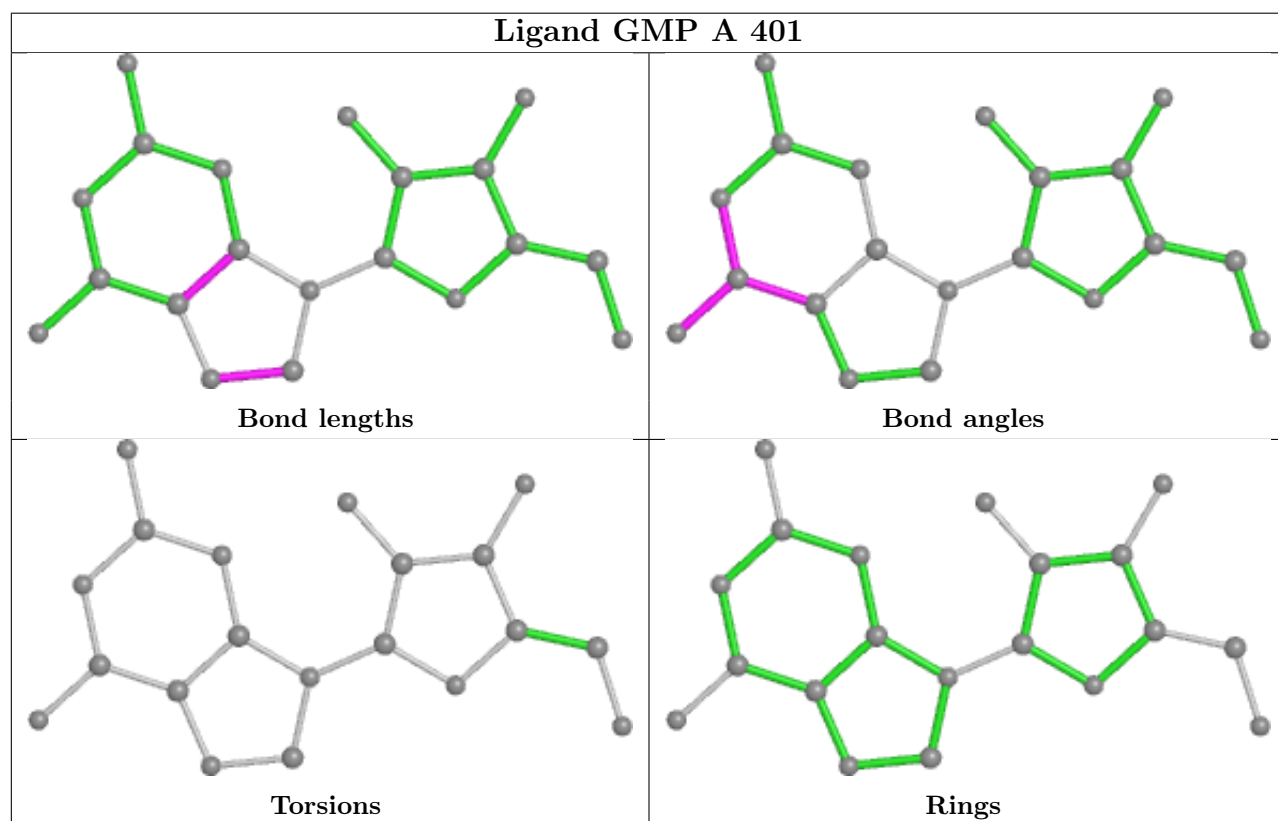
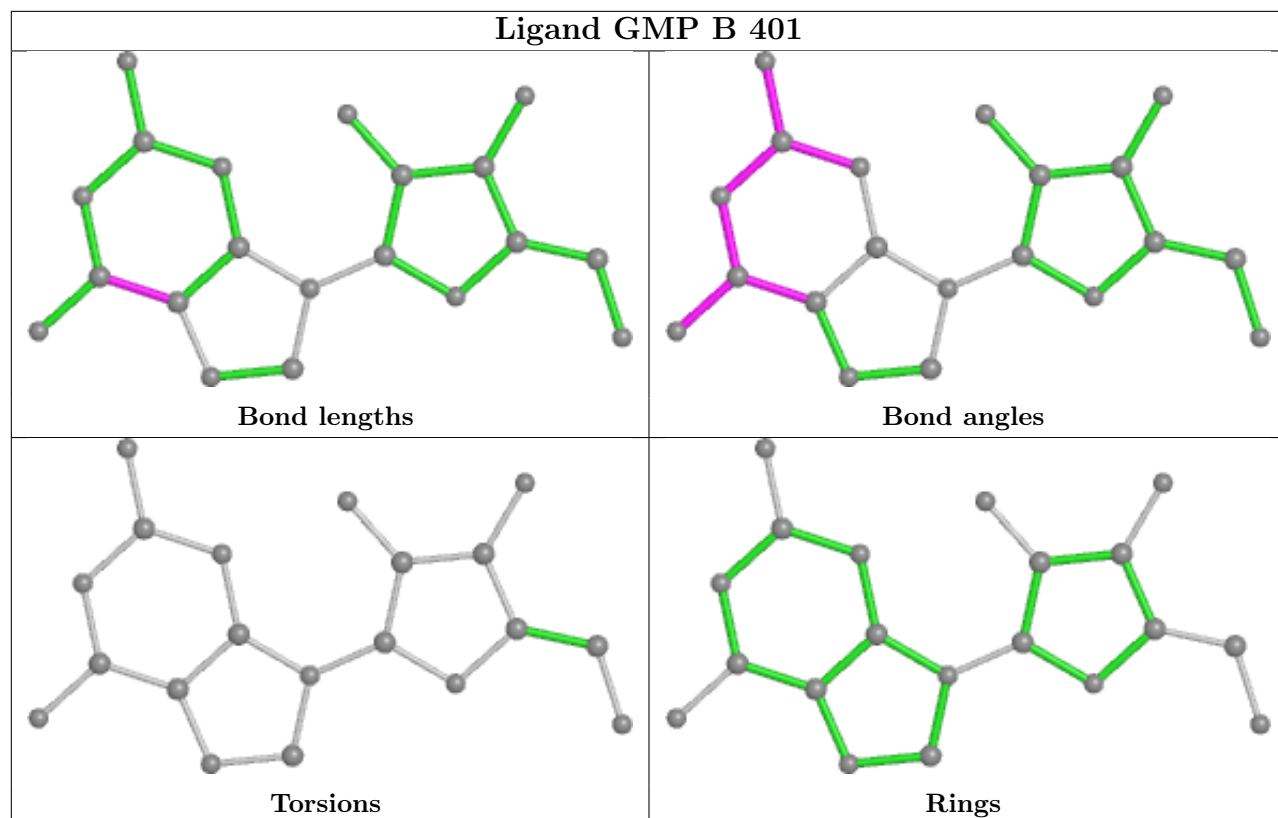
There are no ring outliers.

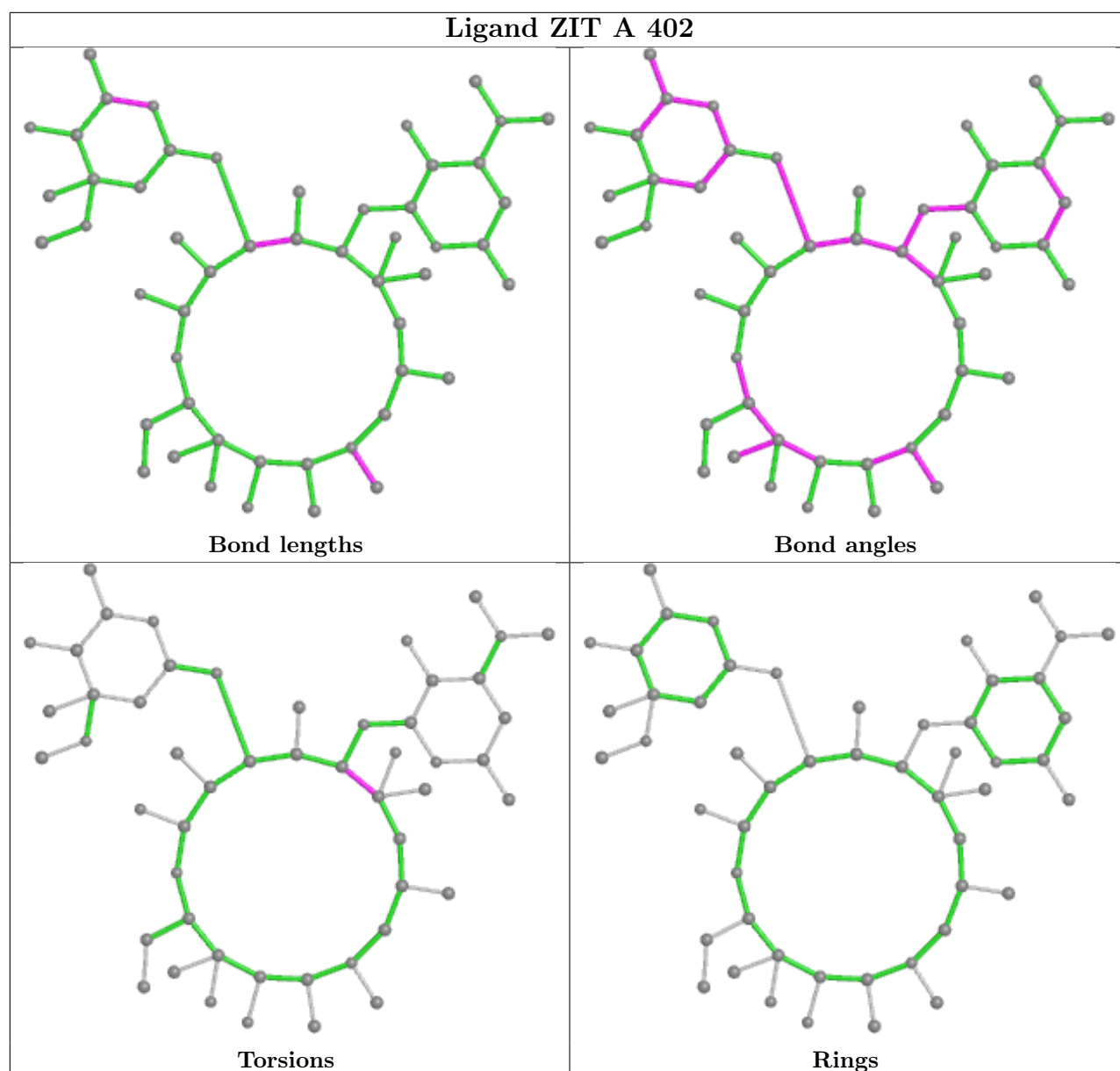
4 monomers are involved in 33 short contacts:

Mol	Chain	Res	Type	Clashes	Symm-Clashes
3	B	402	ZIT	14	0
2	B	401	GMP	1	0
2	A	401	GMP	1	0
3	A	402	ZIT	17	0

The following is a two-dimensional graphical depiction of Mogul quality analysis of bond lengths, bond angles, torsion angles, and ring geometry for all instances of the Ligand of Interest. In addition, ligands with molecular weight > 250 and outliers as shown on the validation Tables will also be included. For torsion angles, if less than 5% of the Mogul distribution of torsion angles is within 10 degrees of the torsion angle in question, then that torsion angle is considered an outlier. Any bond that is central to one or more torsion angles identified as an outlier by Mogul will be highlighted in the graph. For rings, the root-mean-square deviation (RMSD) between the ring in question and similar rings identified by Mogul is calculated over all ring torsion angles. If the average RMSD is greater than 60 degrees and the minimal RMSD between the ring in question and any Mogul-identified rings is also greater than 60 degrees, then that ring is considered an outlier. The outliers are highlighted in purple. The color gray indicates Mogul did not find sufficient equivalents in the CSD to analyse the geometry.







5.7 Other polymers [i](#)

There are no such residues in this entry.

5.8 Polymer linkage issues [i](#)

There are no chain breaks in this entry.

6 Fit of model and data

6.1 Protein, DNA and RNA chains

In the following table, the column labelled ‘#RSRZ > 2’ contains the number (and percentage) of RSRZ outliers, followed by percent RSRZ outliers for the chain as percentile scores relative to all X-ray entries and entries of similar resolution. The OWAB column contains the minimum, median, 95th percentile and maximum values of the occupancy-weighted average B-factor per residue. The column labelled ‘Q < 0.9’ lists the number of (and percentage) of residues with an average occupancy less than 0.9.

Mol	Chain	Analysed	<RSRZ>	#RSRZ>2	OWAB(Å ²)	Q<0.9
1	A	287/302 (95%)	1.05	44 (15%) 2 2	31, 64, 118, 146	0
1	B	287/302 (95%)	0.88	32 (11%) 5 5	30, 58, 102, 135	0
All	All	574/604 (95%)	0.96	76 (13%) 3 3	30, 61, 112, 146	0

All (76) RSRZ outliers are listed below:

Mol	Chain	Res	Type	RSRZ
1	B	293	VAL	8.3
1	A	289	ALA	6.5
1	A	157	LEU	6.1
1	A	273	LEU	6.0
1	A	269	LEU	5.5
1	B	28	ILE	5.4
1	A	266	ALA	5.3
1	B	291	LEU	5.2
1	A	174	TYR	5.1
1	A	283	LEU	5.0
1	A	290	GLN	4.9
1	A	177	TRP	4.8
1	B	284	ILE	4.8
1	B	166	ILE	4.8
1	A	276	LEU	4.7
1	A	284	ILE	4.7
1	A	161	LYS	4.5
1	A	274	PHE	4.4
1	B	274	PHE	4.4
1	A	271	TYR	4.3
1	B	26	MET	4.2
1	B	282	SER	4.2
1	B	187	PHE	3.9
1	A	182	VAL	3.9

Continued on next page...

Continued from previous page...

Mol	Chain	Res	Type	RSRZ
1	B	212	ILE	3.7
1	B	179	ASP	3.7
1	A	183	LEU	3.6
1	B	161	LYS	3.6
1	B	273	LEU	3.6
1	A	248	LEU	3.6
1	B	170	LEU	3.5
1	A	170	LEU	3.4
1	B	174	TYR	3.3
1	A	99	LEU	3.2
1	B	184	TRP	3.2
1	A	184	TRP	3.1
1	B	164	ILE	3.1
1	B	21	MET	3.1
1	A	168	GLU	3.0
1	B	288	LYS	2.9
1	B	276	LEU	2.9
1	B	290	GLN	2.9
1	A	173	ARG	2.9
1	A	172	THR	2.8
1	B	287	ALA	2.7
1	A	268	PRO	2.7
1	A	272	GLY	2.7
1	B	269	LEU	2.6
1	B	162	SER	2.6
1	A	160	VAL	2.6
1	B	205	ASP	2.5
1	B	100	ASP	2.5
1	B	165	GLY	2.5
1	A	233	PHE	2.5
1	B	226	PHE	2.4
1	A	169	GLN	2.4
1	A	175	ARG	2.4
1	A	230	VAL	2.4
1	A	153	ILE	2.4
1	B	160	VAL	2.4
1	A	26	MET	2.4
1	A	108	TRP	2.4
1	A	106	ILE	2.3
1	A	254	ASN	2.3
1	A	162	SER	2.3
1	B	219	ILE	2.3

Continued on next page...

Continued from previous page...

Mol	Chain	Res	Type	RSRZ
1	A	285	VAL	2.3
1	A	287	ALA	2.2
1	A	181	ASP	2.2
1	A	28	ILE	2.2
1	A	242	ILE	2.1
1	A	179	ASP	2.1
1	A	167	SER	2.1
1	B	289	ALA	2.0
1	B	185	ALA	2.0
1	A	176	LYS	2.0

6.2 Non-standard residues in protein, DNA, RNA chains [i](#)

There are no non-standard protein/DNA/RNA residues in this entry.

6.3 Carbohydrates [i](#)

There are no monosaccharides in this entry.

6.4 Ligands [i](#)

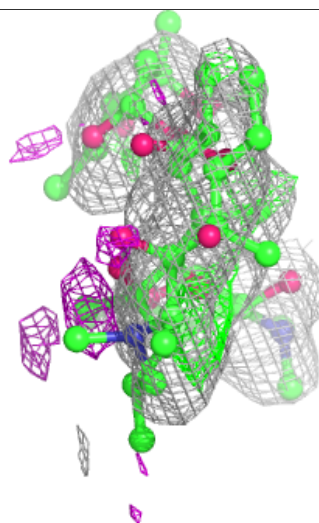
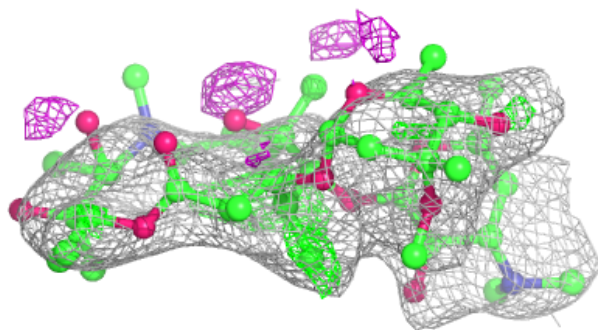
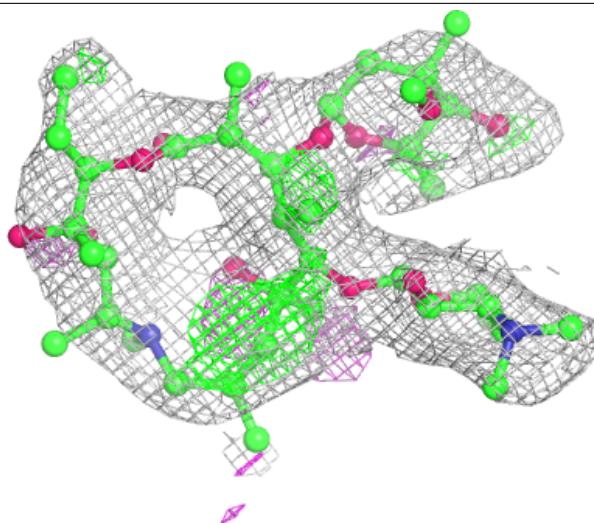
In the following table, the Atoms column lists the number of modelled atoms in the group and the number defined in the chemical component dictionary. The B-factors column lists the minimum, median, 95th percentile and maximum values of B factors of atoms in the group. The column labelled 'Q< 0.9' lists the number of atoms with occupancy less than 0.9.

Mol	Type	Chain	Res	Atoms	RSCC	RSR	B-factors(Å ²)	Q<0.9
3	ZIT	A	402	52/52	0.71	0.36	74,98,109,111	0
3	ZIT	B	402	52/52	0.83	0.24	56,75,84,89	0
2	GMP	B	401	20/20	0.96	0.15	34,39,52,53	0
2	GMP	A	401	20/20	0.96	0.14	38,46,52,53	0

The following is a graphical depiction of the model fit to experimental electron density of all instances of the Ligand of Interest. In addition, ligands with molecular weight > 250 and outliers as shown on the geometry validation Tables will also be included. Each fit is shown from different orientation to approximate a three-dimensional view.

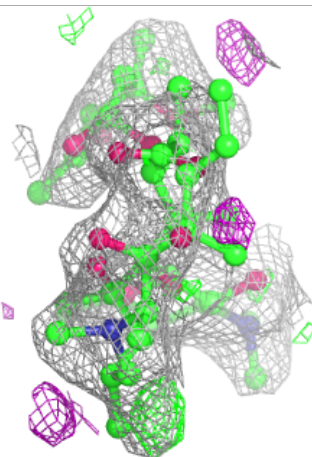
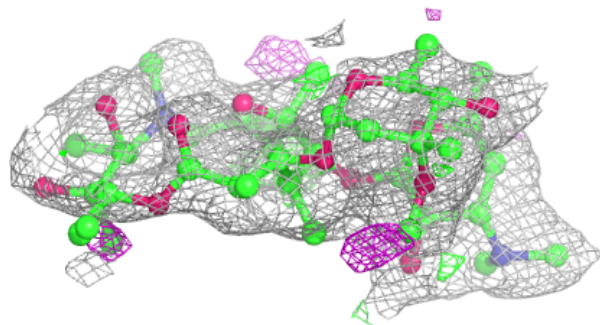
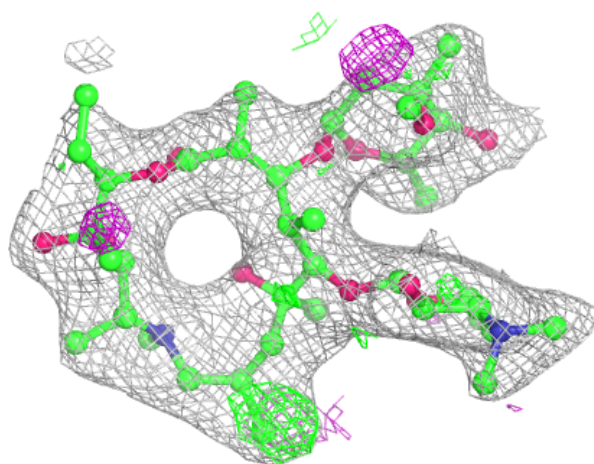
Electron density around ZIT A 402:

$2mF_o-DF_c$ (at 0.7 rmsd) in gray
 mF_o-DF_c (at 3 rmsd) in purple (negative)
and green (positive)



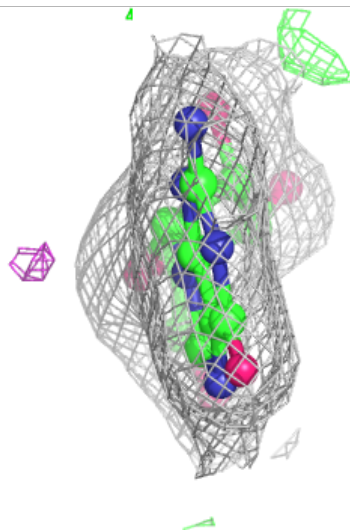
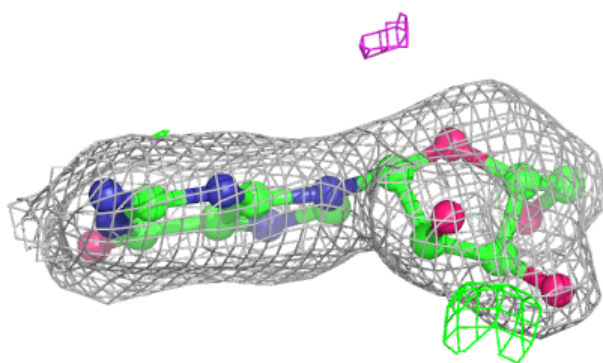
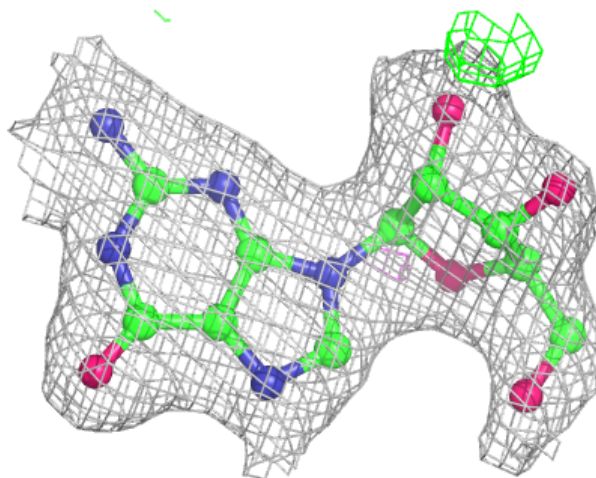
Electron density around ZIT B 402:

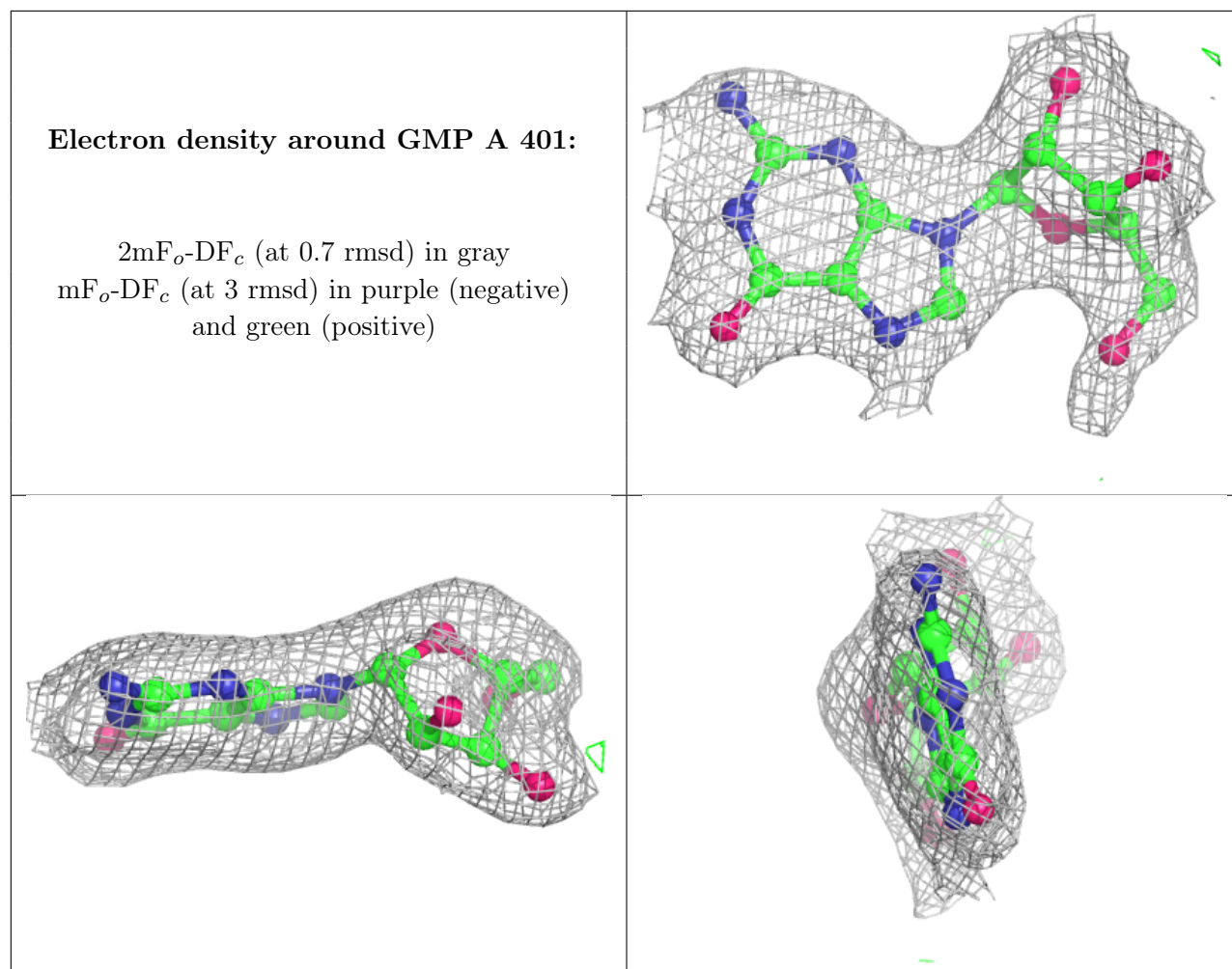
$2mF_o-DF_c$ (at 0.7 rmsd) in gray
 mF_o-DF_c (at 3 rmsd) in purple (negative)
and green (positive)



Electron density around GMP B 401:

$2mF_o-DF_c$ (at 0.7 rmsd) in gray
 mF_o-DF_c (at 3 rmsd) in purple (negative)
and green (positive)





6.5 Other polymers [i](#)

There are no such residues in this entry.