



wwPDB X-ray Structure Validation Summary Report ⓘ

Oct 23, 2024 – 09:52 AM EDT

PDB ID : 3W3J
Title : Crystal structure of human TLR8 in complex with CL097
Authors : Tanji, H.; Ohto, U.; Shimizu, T.
Deposited on : 2012-12-22
Resolution : 2.00 Å(reported)

This is a wwPDB X-ray Structure Validation Summary Report for a publicly released PDB entry.

We welcome your comments at validation@mail.wwpdb.org

A user guide is available at

<https://www.wwpdb.org/validation/2017/XrayValidationReportHelp>

with specific help available everywhere you see the ⓘ symbol.

The types of validation reports are described at

<http://www.wwpdb.org/validation/2017/FAQs#types>.

The following versions of software and data (see [references ⓘ](#)) were used in the production of this report:

MolProbity : 4.02b-467
Mogul : 2022.3.0, CSD as543be (2022)
Xtriage (Phenix) : 1.20.1
EDS : 3.0
Percentile statistics : 20231227.v01 (using entries in the PDB archive December 27th 2023)
CCP4 : 9.0.003 (Gargrove)
Density-Fitness : 1.0.11
Ideal geometry (proteins) : Engh & Huber (2001)
Ideal geometry (DNA, RNA) : Parkinson et al. (1996)
Validation Pipeline (wwPDB-VP) : 2.39

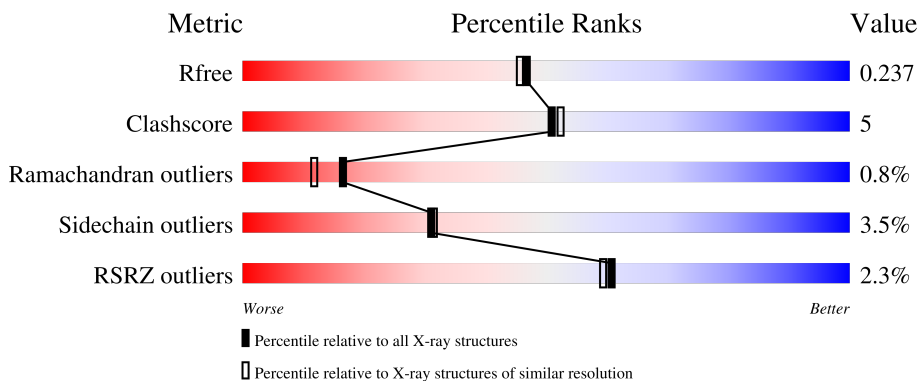
1 Overall quality at a glance

The following experimental techniques were used to determine the structure:

X-RAY DIFFRACTION

The reported resolution of this entry is 2.00 Å.

Percentile scores (ranging between 0-100) for global validation metrics of the entry are shown in the following graphic. The table shows the number of entries on which the scores are based.



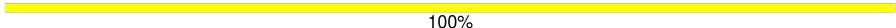

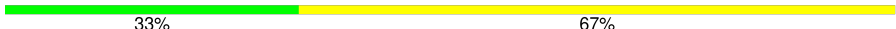
Metric	Whole archive (#Entries)	Similar resolution (#Entries, resolution range(Å))
R_{free}	164625	9409 (2.00-2.00)
Clashscore	180529	10737 (2.00-2.00)
Ramachandran outliers	177936	10628 (2.00-2.00)
Sidechain outliers	177891	10627 (2.00-2.00)
RSRZ outliers	164620	9409 (2.00-2.00)

The table below summarises the geometric issues observed across the polymeric chains and their fit to the electron density. The red, orange, yellow and green segments of the lower bar indicate the fraction of residues that contain outliers for ≥ 3 , 2, 1 and 0 types of geometric quality criteria respectively. A grey segment represents the fraction of residues that are not modelled. The numeric value for each fraction is indicated below the corresponding segment, with a dot representing fractions $\leq 5\%$. The upper red bar (where present) indicates the fraction of residues that have poor fit to the electron density. The numeric value is given above the bar.

Mol	Chain	Length	Quality of chain
1	A	811	 3% 76% 14% • 8%
1	B	811	 2% 79% 12% • 8%
2	C	4	 25% 50% 25%
2	F	4	 75% 25%
3	D	2	 50% 50%

Continued on next page...

Continued from previous page...

Mol	Chain	Length	Quality of chain
3	G	2	 100%
4	E	3	 33% 67%
4	H	3	 33% 67%

2 Entry composition i

There are 9 unique types of molecules in this entry. The entry contains 13299 atoms, of which 0 are hydrogens and 0 are deuteriums.

In the tables below, the ZeroOcc column contains the number of atoms modelled with zero occupancy, the AltConf column contains the number of residues with at least one atom in alternate conformation and the Trace column contains the number of residues modelled with at most 2 atoms.

- Molecule 1 is a protein called Toll-like receptor 8.

Mol	Chain	Residues	Atoms					ZeroOcc	AltConf	Trace
			Total	C	N	O	S			
1	A	747	Total	C	N	O	S	0	0	0
			5988	3832	1018	1119	19			
1	B	746	Total	C	N	O	S	0	0	0
			5982	3830	1017	1116	19			

There are 20 discrepancies between the modelled and reference sequences:

Chain	Residue	Modelled	Actual	Comment	Reference
A	23	ARG	-	expression tag	UNP Q9NR97
A	24	SER	-	expression tag	UNP Q9NR97
A	25	PRO	-	expression tag	UNP Q9NR97
A	26	TRP	-	expression tag	UNP Q9NR97
A	828	GLU	-	expression tag	UNP Q9NR97
A	829	PHE	-	expression tag	UNP Q9NR97
A	830	LEU	-	expression tag	UNP Q9NR97
A	831	VAL	-	expression tag	UNP Q9NR97
A	832	PRO	-	expression tag	UNP Q9NR97
A	833	ARG	-	expression tag	UNP Q9NR97
B	23	ARG	-	expression tag	UNP Q9NR97
B	24	SER	-	expression tag	UNP Q9NR97
B	25	PRO	-	expression tag	UNP Q9NR97
B	26	TRP	-	expression tag	UNP Q9NR97
B	828	GLU	-	expression tag	UNP Q9NR97
B	829	PHE	-	expression tag	UNP Q9NR97
B	830	LEU	-	expression tag	UNP Q9NR97
B	831	VAL	-	expression tag	UNP Q9NR97
B	832	PRO	-	expression tag	UNP Q9NR97
B	833	ARG	-	expression tag	UNP Q9NR97

- Molecule 2 is an oligosaccharide called alpha-D-mannopyranose-(1-3)-beta-D-mannopyranose-(1-4)-2-acetamido-2-deoxy-beta-D-glucopyranose-(1-4)-2-acetamido-2-deoxy-beta-D-glucopyranose.



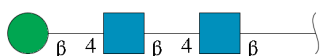
Mol	Chain	Residues	Atoms				ZeroOcc	AltConf	Trace
2	C	4	Total	C	N	O	0	0	0
			50	28	2	20			
2	F	4	Total	C	N	O	0	0	0
			50	28	2	20			

- Molecule 3 is an oligosaccharide called 2-acetamido-2-deoxy-beta-D-glucopyranose-(1-4)-2-acetamido-2-deoxy-beta-D-glucopyranose.



Mol	Chain	Residues	Atoms				ZeroOcc	AltConf	Trace
3	D	2	Total	C	N	O	0	0	0
			28	16	2	10			
3	G	2	Total	C	N	O	0	0	0
			28	16	2	10			

- Molecule 4 is an oligosaccharide called beta-D-mannopyranose-(1-4)-2-acetamido-2-deoxy-beta-D-glucopyranose-(1-4)-2-acetamido-2-deoxy-beta-D-glucopyranose.



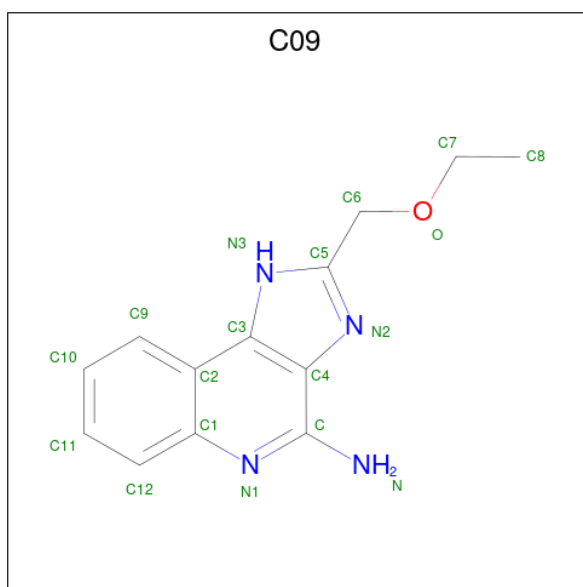
Mol	Chain	Residues	Atoms				ZeroOcc	AltConf	Trace
4	E	3	Total	C	N	O	0	0	0
			39	22	2	15			
4	H	3	Total	C	N	O	0	0	0
			39	22	2	15			

- Molecule 5 is 2-acetamido-2-deoxy-beta-D-glucopyranose (three-letter code: NAG) (formula: C₈H₁₅NO₆).



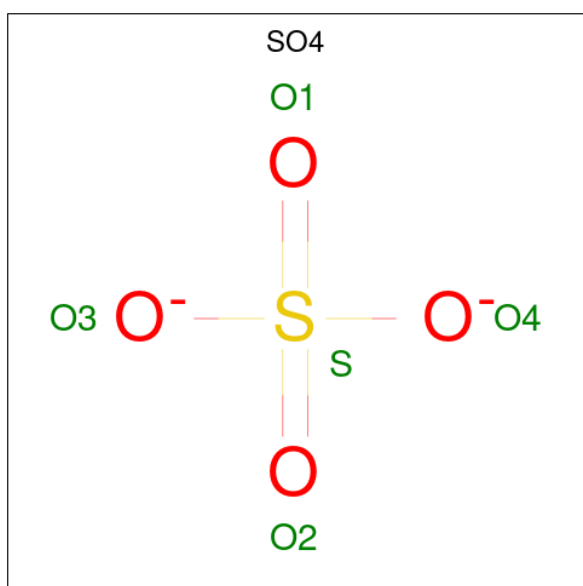
Mol	Chain	Residues	Atoms				ZeroOcc	AltConf
			Total	C	N	O		
5	A	1	Total 14	8	1	5	0	0
5	A	1	Total 14	8	1	5	0	0
5	A	1	Total 14	8	1	5	0	0
5	A	1	Total 14	8	1	5	0	0
5	B	1	Total 14	8	1	5	0	0
5	B	1	Total 14	8	1	5	0	0
5	B	1	Total 14	8	1	5	0	0
5	B	1	Total 14	8	1	5	0	0

- Molecule 6 is 2-(ethoxymethyl)-1H-imidazo[4,5-c]quinolin-4-amine (three-letter code: C09) (formula: C₁₃H₁₄N₄O).



Mol	Chain	Residues	Atoms				ZeroOcc	AltConf
			Total	C	N	O		
6	A	1	18	13	4	1	0	0
6	B	1	18	13	4	1	0	0

- Molecule 7 is SULFATE ION (three-letter code: SO4) (formula: O₄S).



Mol	Chain	Residues	Atoms			ZeroOcc	AltConf
			Total	O	S		
7	A	1	5	4	1	0	0
7	A	1	5	4	1	0	0

Continued on next page...

Continued from previous page...

Mol	Chain	Residues	Atoms			ZeroOcc	AltConf
7	A	1	Total	O	S	0	0
			5	4	1		
7	A	1	Total	O	S	0	0
			5	4	1		
7	A	1	Total	O	S	0	0
			5	4	1		
7	A	1	Total	O	S	0	0
			5	4	1		
7	A	1	Total	O	S	0	0
			5	4	1		
7	B	1	Total	O	S	0	0
			5	4	1		
7	B	1	Total	O	S	0	0
			5	4	1		
7	B	1	Total	O	S	0	0
			5	4	1		
7	B	1	Total	O	S	0	0
			5	4	1		
7	B	1	Total	O	S	0	0
			5	4	1		
7	B	1	Total	O	S	0	0
			5	4	1		

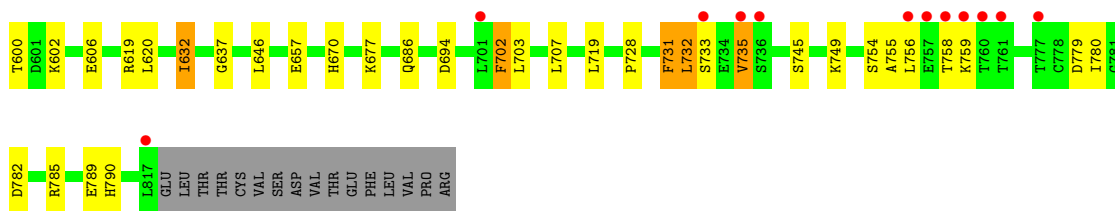
- Molecule 8 is GLYCEROL (three-letter code: GOL) (formula: C₃H₈O₃).



Mol	Chain	Residues	Atoms	ZeroOcc	AltConf
8	B	1	Total C O 6 3 3	0	0

- Molecule 9 is water.

Mol	Chain	Residues	Atoms	ZeroOcc	AltConf
9	A	438	Total O 438 438	0	0
9	B	423	Total O 423 423	0	0



- Molecule 2: alpha-D-mannopyranose-(1-3)-beta-D-mannopyranose-(1-4)-2-acetamido-2-deoxy-beta-D-glucopyranose-(1-4)-2-acetamido-2-deoxy-beta-D-glucopyranose



- Molecule 2: alpha-D-mannopyranose-(1-3)-beta-D-mannopyranose-(1-4)-2-acetamido-2-deoxy-beta-D-glucopyranose-(1-4)-2-acetamido-2-deoxy-beta-D-glucopyranose



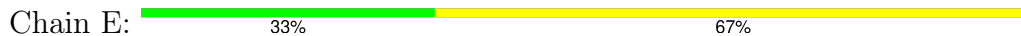
- Molecule 3: 2-acetamido-2-deoxy-beta-D-glucopyranose-(1-4)-2-acetamido-2-deoxy-beta-D-glucopyranose



- Molecule 3: 2-acetamido-2-deoxy-beta-D-glucopyranose-(1-4)-2-acetamido-2-deoxy-beta-D-glucopyranose



- Molecule 4: beta-D-mannopyranose-(1-4)-2-acetamido-2-deoxy-beta-D-glucopyranose-(1-4)-2-acetamido-2-deoxy-beta-D-glucopyranose



- Molecule 4: beta-D-mannopyranose-(1-4)-2-acetamido-2-deoxy-beta-D-glucopyranose-(1-4)-2-acetamido-2-deoxy-beta-D-glucopyranose





4 Data and refinement statistics

Property	Value	Source
Space group	P 1 21 1	Depositor
Cell constants a, b, c, α , β , γ	71.38Å 148.75Å 85.77Å 90.00° 103.39° 90.00°	Depositor
Resolution (Å)	40.43 – 2.00 40.43 – 2.00	Depositor EDS
% Data completeness (in resolution range)	97.8 (40.43-2.00) 97.8 (40.43-2.00)	Depositor EDS
R_{merge}	(Not available)	Depositor
R_{sym}	0.10	Depositor
$\langle I/\sigma(I) \rangle$ ¹	2.05 (at 2.00Å)	Xtrriage
Refinement program	PHENIX 1.8.1_1168	Depositor
R, R_{free}	0.191 , 0.237 0.193 , 0.237	Depositor DCC
R_{free} test set	5748 reflections (5.02%)	wwPDB-VP
Wilson B-factor (Å ²)	29.4	Xtrriage
Anisotropy	0.463	Xtrriage
Bulk solvent k_{sol} (e/Å ³), B_{sol} (Å ²)	0.37 , 54.4	EDS
L-test for twinning ²	$\langle L \rangle = 0.43$, $\langle L^2 \rangle = 0.26$	Xtrriage
Estimated twinning fraction	No twinning to report.	Xtrriage
F_o, F_c correlation	0.94	EDS
Total number of atoms	13299	wwPDB-VP
Average B, all atoms (Å ²)	39.0	wwPDB-VP

Xtrriage's analysis on translational NCS is as follows: *The largest off-origin peak in the Patterson function is 3.17% of the height of the origin peak. No significant pseudotranslation is detected.*

¹Intensities estimated from amplitudes.

²Theoretical values of $\langle |L| \rangle$, $\langle L^2 \rangle$ for acentric reflections are 0.5, 0.333 respectively for untwinned datasets, and 0.375, 0.2 for perfectly twinned datasets.

5 Model quality

5.1 Standard geometry

Bond lengths and bond angles in the following residue types are not validated in this section: C09, SO4, GOL, MAN, NAG, BMA

The Z score for a bond length (or angle) is the number of standard deviations the observed value is removed from the expected value. A bond length (or angle) with $|Z| > 5$ is considered an outlier worth inspection. RMSZ is the root-mean-square of all Z scores of the bond lengths (or angles).

Mol	Chain	Bond lengths		Bond angles	
		RMSZ	# Z >5	RMSZ	# Z >5
1	A	0.32	0/6112	0.50	0/8290
1	B	0.33	0/6106	0.51	0/8282
All	All	0.33	0/12218	0.50	0/16572

There are no bond length outliers.

There are no bond angle outliers.

There are no chirality outliers.

There are no planarity outliers.

5.2 Too-close contacts

In the following table, the Non-H and H(model) columns list the number of non-hydrogen atoms and hydrogen atoms in the chain respectively. The H(added) column lists the number of hydrogen atoms added and optimized by MolProbity. The Clashes column lists the number of clashes within the asymmetric unit, whereas Symm-Clashes lists symmetry-related clashes.

Mol	Chain	Non-H	H(model)	H(added)	Clashes	Symm-Clashes
1	A	5988	0	5937	73	0
1	B	5982	0	5940	51	0
2	C	50	0	43	1	0
2	F	50	0	43	1	0
3	D	28	0	25	1	0
3	G	28	0	25	0	0
4	E	39	0	34	0	0
4	H	39	0	34	0	0
5	A	56	0	52	0	0
5	B	56	0	52	0	1
6	A	18	0	14	0	0

Continued on next page...

Continued from previous page...

Mol	Chain	Non-H	H(model)	H(added)	Clashes	Symm-Clashes
6	B	18	0	14	0	0
7	A	40	0	0	4	0
7	B	40	0	0	2	0
8	B	6	0	8	0	0
9	A	438	0	0	15	1
9	B	423	0	0	10	0
All	All	13299	0	12221	125	1

The all-atom clashscore is defined as the number of clashes found per 1000 atoms (including hydrogen atoms). The all-atom clashscore for this structure is 5.

The worst 5 of 125 close contacts within the same asymmetric unit are listed below, sorted by their clash magnitude.

Atom-1	Atom-2	Interatomic distance (Å)	Clash overlap (Å)
1:B:386:ASP:OD2	9:B:1204:HOH:O	2.06	0.73
1:B:782:ASP:OD1	1:B:785:ARG:NH2	2.23	0.71
1:A:280:ARG:HD2	1:A:303:ASN:HD21	1.55	0.70
1:B:52:ARG:NH2	9:B:1320:HOH:O	2.24	0.70
1:A:150:GLU:HG2	1:A:174:ASN:HB2	1.77	0.67

All (1) symmetry-related close contacts are listed below. The label for Atom-2 includes the symmetry operator and encoded unit-cell translations to be applied.

Atom-1	Atom-2	Interatomic distance (Å)	Clash overlap (Å)
5:B:914:NAG:O3	9:A:1474:HOH:O[1_655]	2.06	0.14

5.3 Torsion angles [i](#)

5.3.1 Protein backbone [i](#)

In the following table, the Percentiles column shows the percent Ramachandran outliers of the chain as a percentile score with respect to all X-ray entries followed by that with respect to entries of similar resolution.

The Analysed column shows the number of residues for which the backbone conformation was analysed, and the total number of residues.

Mol	Chain	Analysed	Favoured	Allowed	Outliers	Percentiles
1	A	739/811 (91%)	698 (94%)	34 (5%)	7 (1%)	14 10

Continued on next page...

Continued from previous page...

Mol	Chain	Analysed	Favoured	Allowed	Outliers	Percentiles
1	B	738/811 (91%)	688 (93%)	45 (6%)	5 (1%)	19 14
All	All	1477/1622 (91%)	1386 (94%)	79 (5%)	12 (1%)	16 12

5 of 12 Ramachandran outliers are listed below:

Mol	Chain	Res	Type
1	A	735	VAL
1	A	736	SER
1	A	757	GLU
1	A	734	GLU
1	B	99	ASN

5.3.2 Protein sidechains [i](#)

In the following table, the Percentiles column shows the percent sidechain outliers of the chain as a percentile score with respect to all X-ray entries followed by that with respect to entries of similar resolution.

The Analysed column shows the number of residues for which the sidechain conformation was analysed, and the total number of residues.

Mol	Chain	Analysed	Rotameric	Outliers	Percentiles
1	A	683/755 (90%)	657 (96%)	26 (4%)	28 28
1	B	683/755 (90%)	661 (97%)	22 (3%)	34 35
All	All	1366/1510 (90%)	1318 (96%)	48 (4%)	31 31

5 of 48 residues with a non-rotameric sidechain are listed below:

Mol	Chain	Res	Type
1	B	50	SER
1	B	353	TYR
1	B	87	GLN
1	B	248	LEU
1	B	472	ARG

Sometimes sidechains can be flipped to improve hydrogen bonding and reduce clashes. All (2) such sidechains are listed below:

Mol	Chain	Res	Type
1	A	77	HIS
1	B	87	GLN

5.3.3 RNA [i](#)

There are no RNA molecules in this entry.

5.4 Non-standard residues in protein, DNA, RNA chains [i](#)

There are no non-standard protein/DNA/RNA residues in this entry.

5.5 Carbohydrates [i](#)

18 monosaccharides are modelled in this entry.

In the following table, the Counts columns list the number of bonds (or angles) for which Mogul statistics could be retrieved, the number of bonds (or angles) that are observed in the model and the number of bonds (or angles) that are defined in the Chemical Component Dictionary. The Link column lists molecule types, if any, to which the group is linked. The Z score for a bond length (or angle) is the number of standard deviations the observed value is removed from the expected value. A bond length (or angle) with $|Z| > 2$ is considered an outlier worth inspection. RMSZ is the root-mean-square of all Z scores of the bond lengths (or angles).

Mol	Type	Chain	Res	Link	Bond lengths			Bond angles		
					Counts	RMSZ	# Z > 2	Counts	RMSZ	# Z > 2
2	NAG	C	1	2,1	14,14,15	0.65	0	17,19,21	0.96	1 (5%)
2	NAG	C	2	2	14,14,15	0.57	0	17,19,21	0.84	0
2	BMA	C	3	2	11,11,12	0.90	1 (9%)	15,15,17	1.00	0
2	MAN	C	4	2	11,11,12	0.49	0	15,15,17	2.08	1 (6%)
3	NAG	D	1	3,1	14,14,15	0.61	0	17,19,21	1.14	2 (11%)
3	NAG	D	2	3	14,14,15	0.62	0	17,19,21	0.63	0
4	NAG	E	1	1,4	14,14,15	0.63	0	17,19,21	1.12	3 (17%)
4	NAG	E	2	4	14,14,15	0.58	0	17,19,21	1.04	1 (5%)
4	BMA	E	3	4	11,11,12	0.74	0	15,15,17	0.63	0
2	NAG	F	1	2,1	14,14,15	0.64	0	17,19,21	1.39	1 (5%)
2	NAG	F	2	2	14,14,15	0.48	0	17,19,21	0.92	1 (5%)
2	BMA	F	3	2	11,11,12	1.30	1 (9%)	15,15,17	1.42	3 (20%)
2	MAN	F	4	2	11,11,12	0.52	0	15,15,17	1.79	1 (6%)
3	NAG	G	1	3,1	14,14,15	0.94	1 (7%)	17,19,21	1.40	1 (5%)
3	NAG	G	2	3	14,14,15	0.57	0	17,19,21	1.15	2 (11%)
4	NAG	H	1	1,4	14,14,15	0.64	0	17,19,21	0.90	1 (5%)
4	NAG	H	2	4	14,14,15	0.53	0	17,19,21	0.82	0
4	BMA	H	3	4	11,11,12	1.05	1 (9%)	15,15,17	0.97	1 (6%)

In the following table, the Chirals column lists the number of chiral outliers, the number of chiral centers analysed, the number of these observed in the model and the number defined in the Chemical Component Dictionary. Similar counts are reported in the Torsion and Rings columns. '-' means no outliers of that kind were identified.

Mol	Type	Chain	Res	Link	Chirals	Torsions	Rings
2	NAG	C	1	2,1	-	0/6/23/26	0/1/1/1
2	NAG	C	2	2	-	0/6/23/26	0/1/1/1
2	BMA	C	3	2	-	0/2/19/22	0/1/1/1
2	MAN	C	4	2	-	2/2/19/22	0/1/1/1
3	NAG	D	1	3,1	-	0/6/23/26	0/1/1/1
3	NAG	D	2	3	-	0/6/23/26	0/1/1/1
4	NAG	E	1	1,4	-	0/6/23/26	0/1/1/1
4	NAG	E	2	4	-	1/6/23/26	0/1/1/1
4	BMA	E	3	4	-	0/2/19/22	0/1/1/1
2	NAG	F	1	2,1	-	2/6/23/26	0/1/1/1
2	NAG	F	2	2	-	0/6/23/26	0/1/1/1
2	BMA	F	3	2	-	2/2/19/22	0/1/1/1
2	MAN	F	4	2	-	2/2/19/22	1/1/1/1
3	NAG	G	1	3,1	-	1/6/23/26	0/1/1/1
3	NAG	G	2	3	-	2/6/23/26	0/1/1/1
4	NAG	H	1	1,4	-	0/6/23/26	0/1/1/1
4	NAG	H	2	4	-	0/6/23/26	0/1/1/1
4	BMA	H	3	4	-	2/2/19/22	0/1/1/1

All (4) bond length outliers are listed below:

Mol	Chain	Res	Type	Atoms	Z	Observed(Å)	Ideal(Å)
2	F	3	BMA	O5-C1	-3.41	1.38	1.43
3	G	1	NAG	O5-C1	-2.95	1.38	1.43
4	H	3	BMA	O5-C5	2.46	1.48	1.43
2	C	3	BMA	O5-C1	-2.14	1.40	1.43

The worst 5 of 19 bond angle outliers are listed below:

Mol	Chain	Res	Type	Atoms	Z	Observed(°)	Ideal(°)
2	C	4	MAN	C1-O5-C5	7.12	121.72	112.19
2	F	4	MAN	C1-O5-C5	6.09	120.35	112.19
2	F	1	NAG	C1-O5-C5	4.76	118.57	112.19
3	G	1	NAG	C1-O5-C5	3.93	117.45	112.19
3	D	1	NAG	O5-C1-C2	-2.92	106.77	111.29

There are no chirality outliers.

5 of 14 torsion outliers are listed below:

Mol	Chain	Res	Type	Atoms
4	H	3	BMA	O5-C5-C6-O6
2	F	1	NAG	O5-C5-C6-O6
2	F	3	BMA	O5-C5-C6-O6
2	C	4	MAN	O5-C5-C6-O6
2	F	4	MAN	O5-C5-C6-O6

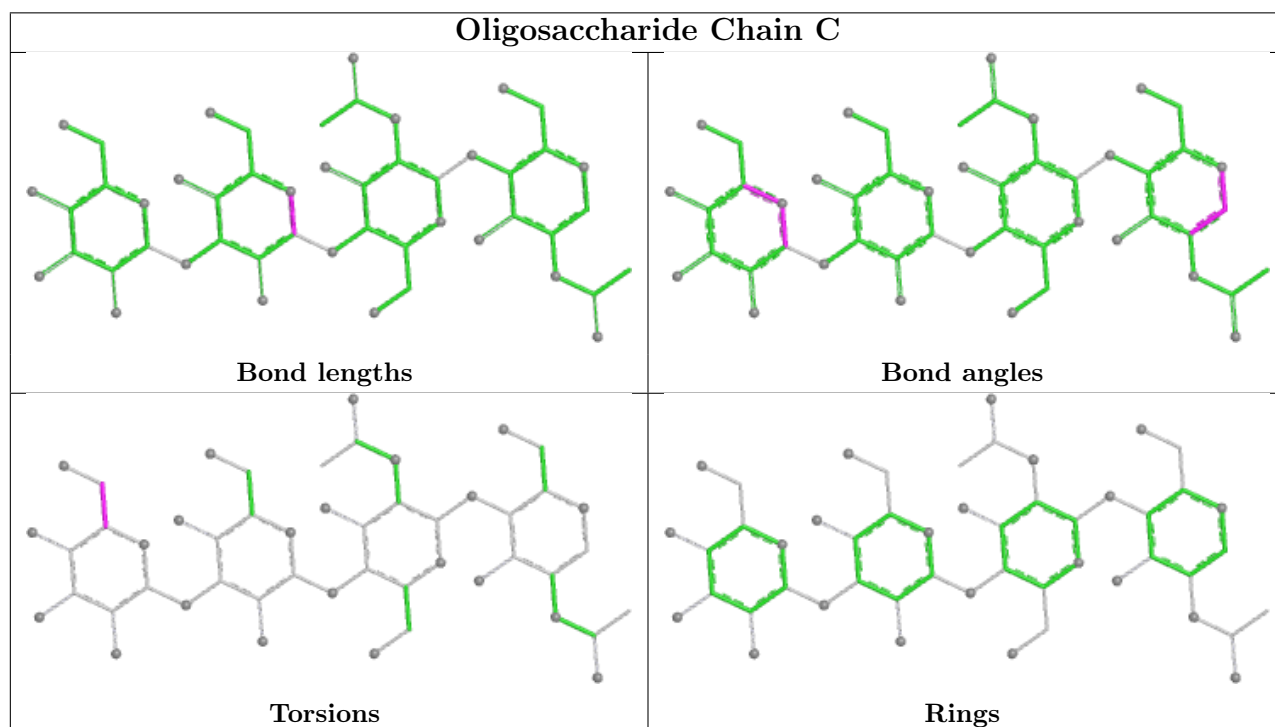
All (1) ring outliers are listed below:

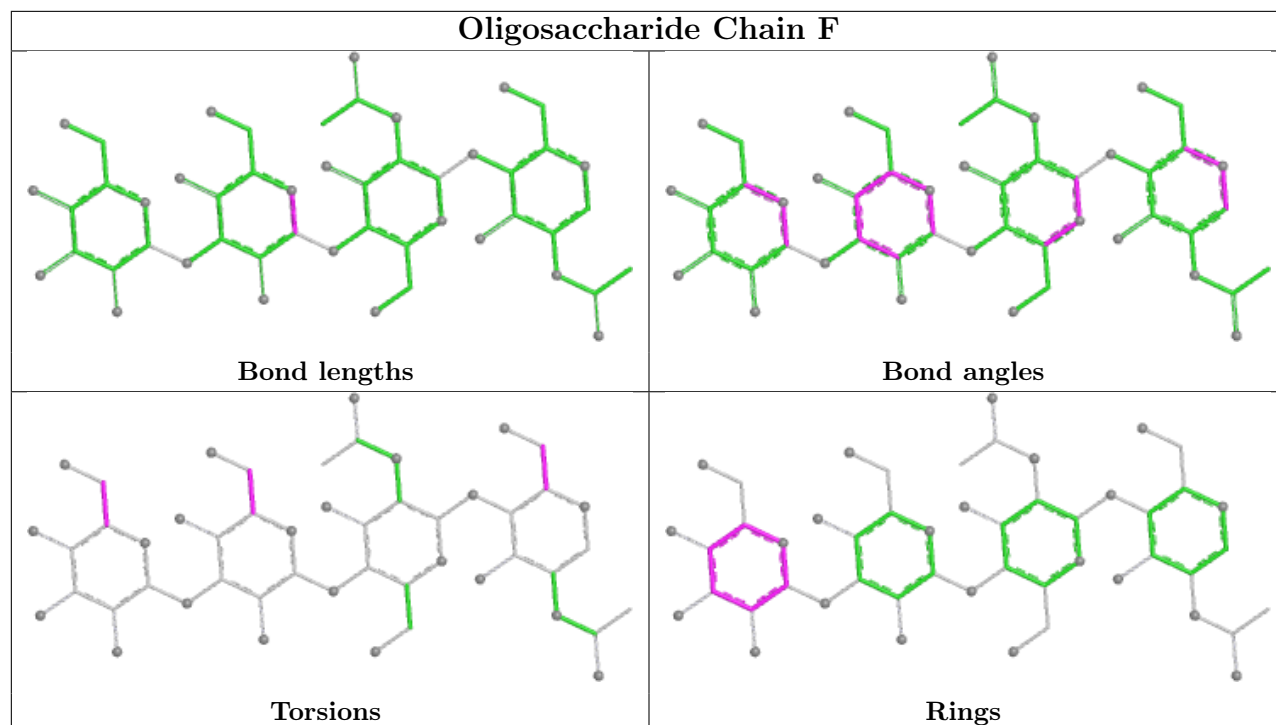
Mol	Chain	Res	Type	Atoms
2	F	4	MAN	C1-C2-C3-C4-C5-O5

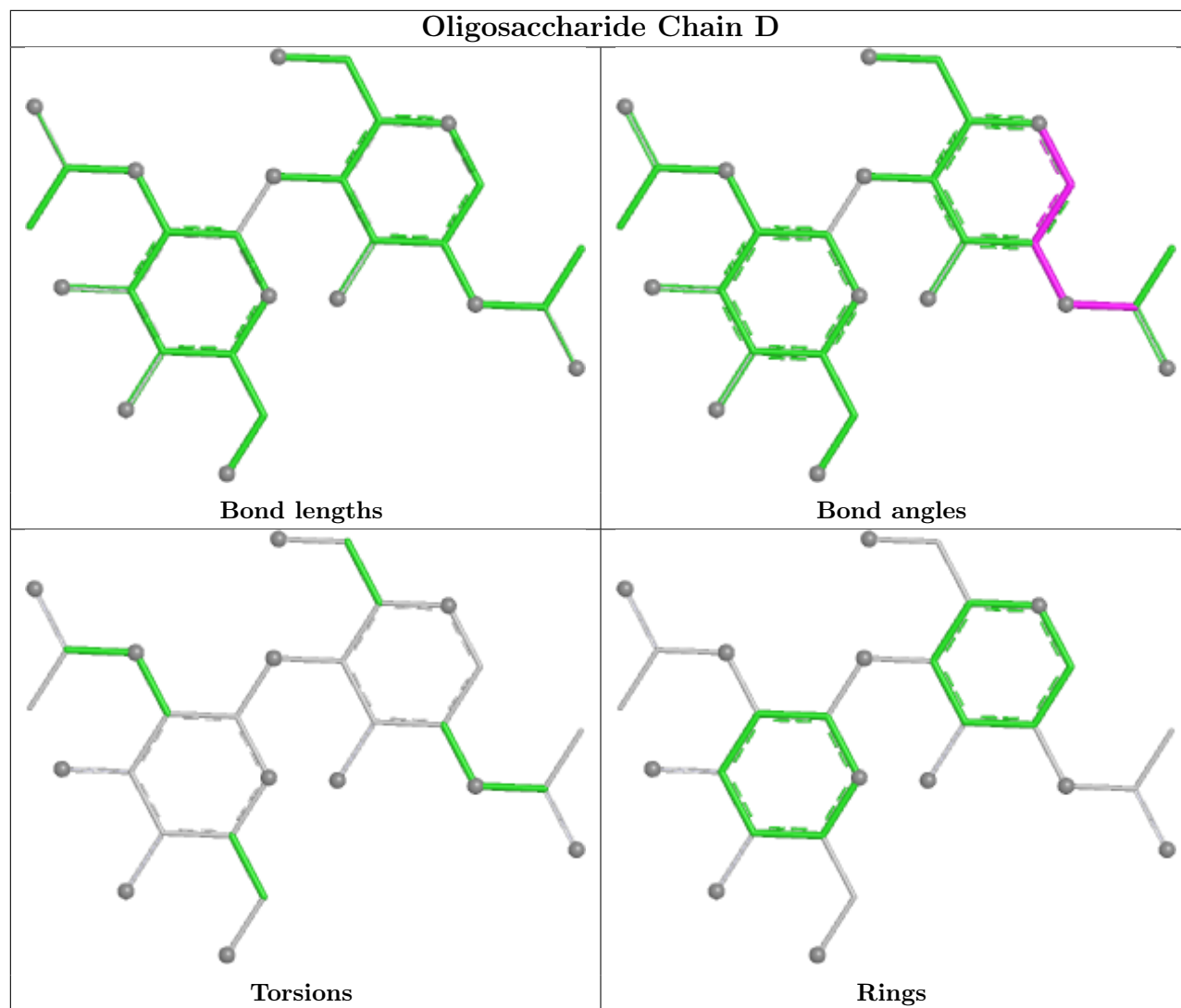
3 monomers are involved in 3 short contacts:

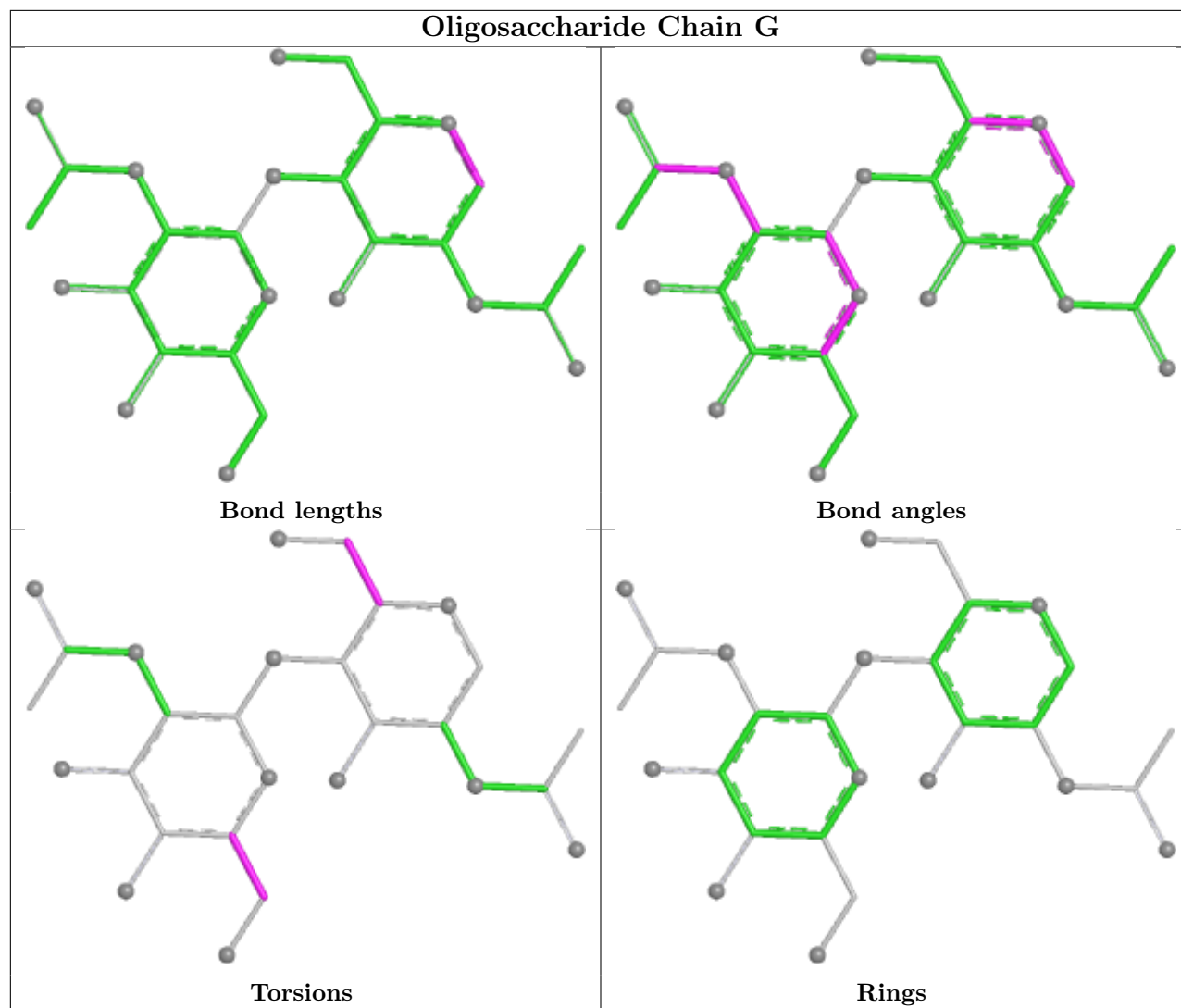
Mol	Chain	Res	Type	Clashes	Symm-Clashes
2	C	1	NAG	1	0
2	F	4	MAN	1	0
3	D	1	NAG	1	0

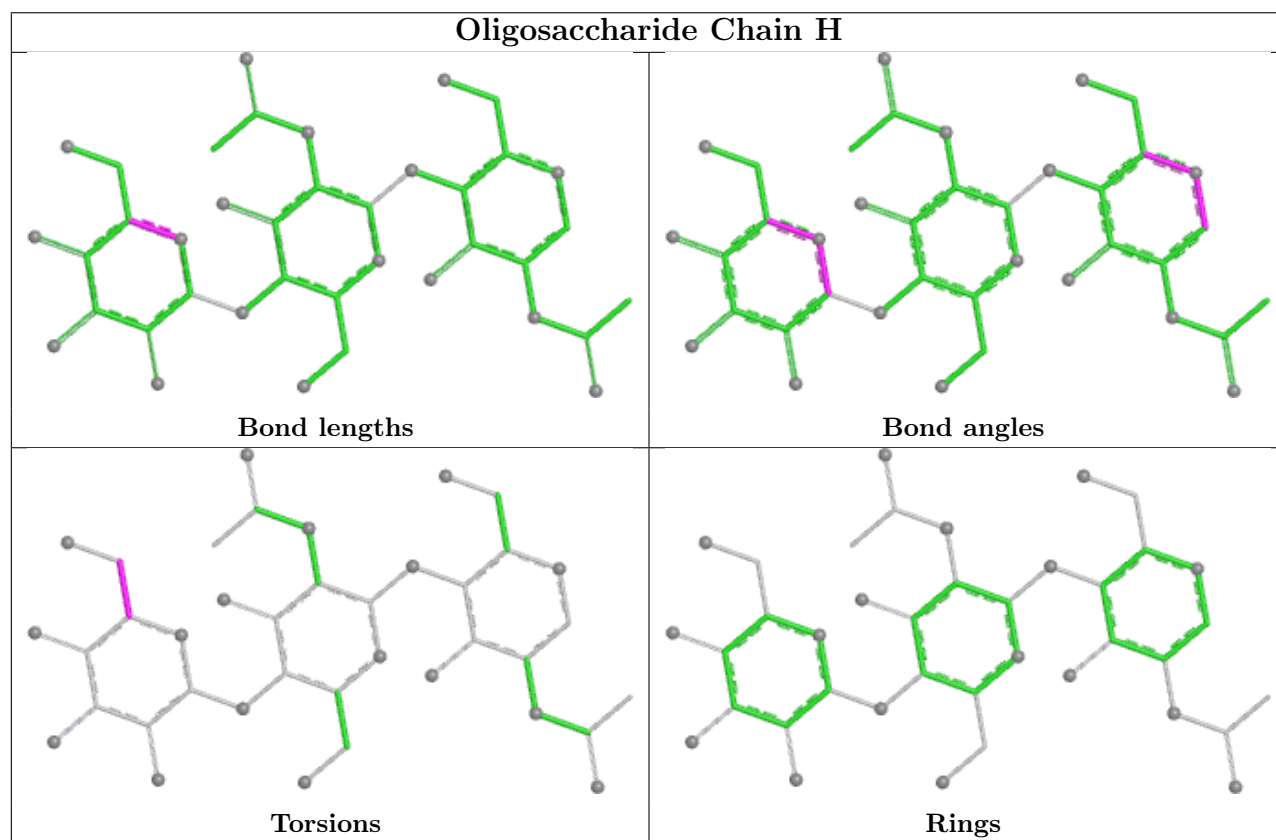
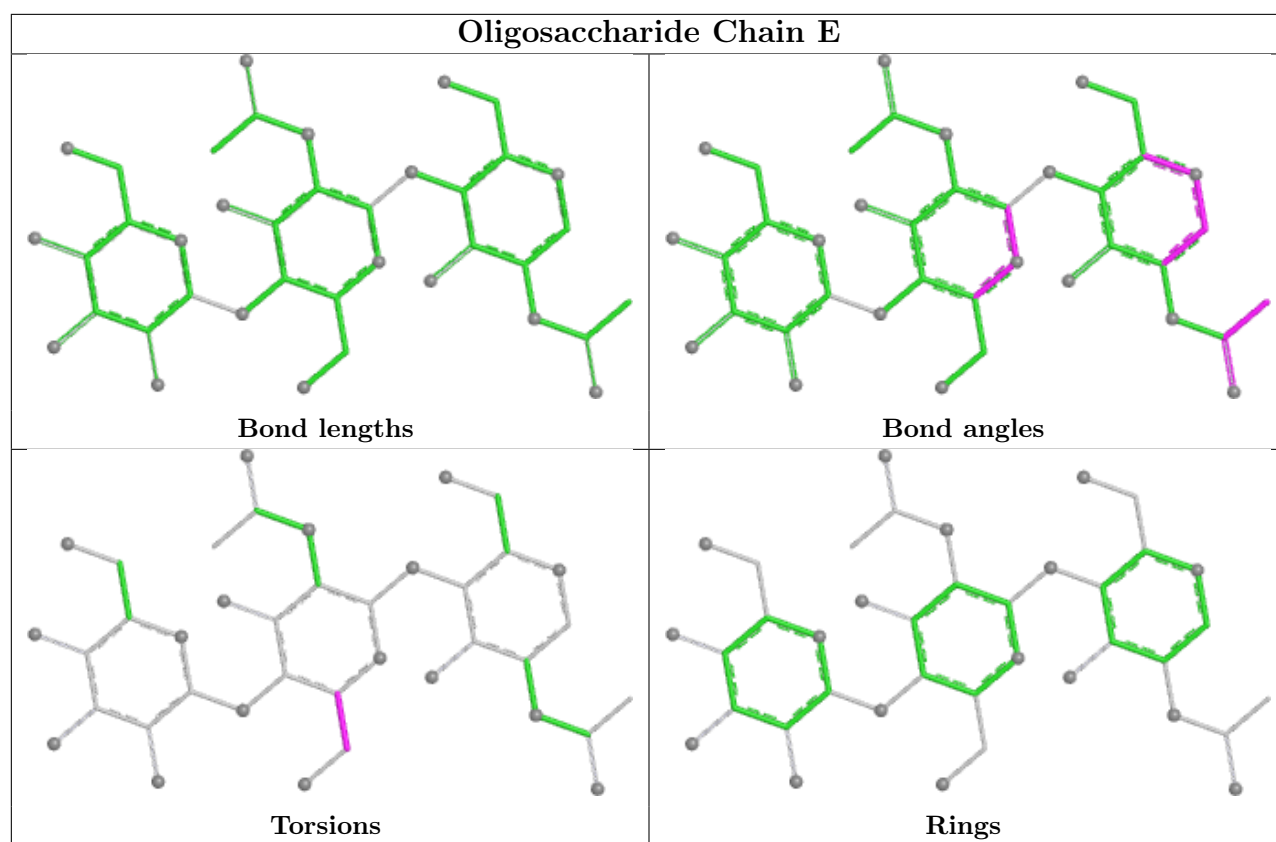
The following is a two-dimensional graphical depiction of Mogul quality analysis of bond lengths, bond angles, torsion angles, and ring geometry for oligosaccharide.











5.6 Ligand geometry

27 ligands are modelled in this entry.

In the following table, the Counts columns list the number of bonds (or angles) for which Mogul statistics could be retrieved, the number of bonds (or angles) that are observed in the model and the number of bonds (or angles) that are defined in the Chemical Component Dictionary. The Link column lists molecule types, if any, to which the group is linked. The Z score for a bond length (or angle) is the number of standard deviations the observed value is removed from the expected value. A bond length (or angle) with $|Z| > 2$ is considered an outlier worth inspection. RMSZ is the root-mean-square of all Z scores of the bond lengths (or angles).

Mol	Type	Chain	Res	Link	Bond lengths			Bond angles		
					Counts	RMSZ	# Z > 2	Counts	RMSZ	# Z > 2
7	SO4	A	1022	-	4,4,4	0.31	0	6,6,6	0.13	0
7	SO4	A	1016	-	4,4,4	0.28	0	6,6,6	0.11	0
5	NAG	B	908	1	14,14,15	0.61	0	17,19,21	0.94	0
5	NAG	B	914	1	14,14,15	0.53	0	17,19,21	0.99	1 (5%)
7	SO4	A	1017	-	4,4,4	0.25	0	6,6,6	0.09	0
7	SO4	A	1015	-	4,4,4	0.19	0	6,6,6	0.14	0
7	SO4	A	1020	-	4,4,4	0.22	0	6,6,6	0.09	0
5	NAG	A	1012	1	14,14,15	0.55	0	17,19,21	0.76	1 (5%)
5	NAG	A	1007	1	14,14,15	0.58	0	17,19,21	0.98	1 (5%)
7	SO4	B	915	-	4,4,4	0.25	0	6,6,6	0.13	0
7	SO4	B	922	-	4,4,4	0.23	0	6,6,6	0.10	0
8	GOL	B	923	-	5,5,5	0.38	0	5,5,5	0.37	0
7	SO4	A	1019	-	4,4,4	0.23	0	6,6,6	0.08	0
7	SO4	B	916	-	4,4,4	0.23	0	6,6,6	0.08	0
7	SO4	B	918	-	4,4,4	0.24	0	6,6,6	0.08	0
7	SO4	A	1018	-	4,4,4	0.23	0	6,6,6	0.11	0
5	NAG	B	912	1	14,14,15	0.61	0	17,19,21	0.68	0
7	SO4	B	919	-	4,4,4	0.24	0	6,6,6	0.11	0
7	SO4	B	920	-	4,4,4	0.23	0	6,6,6	0.06	0
7	SO4	B	921	-	4,4,4	0.22	0	6,6,6	0.09	0
5	NAG	A	1011	1	14,14,15	0.46	0	17,19,21	0.93	1 (5%)
6	C09	B	901	-	16,20,20	1.67	2 (12%)	20,28,28	1.44	5 (25%)
7	SO4	A	1021	-	4,4,4	0.22	0	6,6,6	0.17	0
6	C09	A	1014	-	16,20,20	1.61	2 (12%)	20,28,28	1.32	1 (5%)
5	NAG	A	1013	1	14,14,15	0.56	0	17,19,21	0.68	0
5	NAG	B	913	1	14,14,15	0.52	0	17,19,21	0.88	0
7	SO4	B	917	-	4,4,4	0.23	0	6,6,6	0.08	0

In the following table, the Chirals column lists the number of chiral outliers, the number of chiral centers analysed, the number of these observed in the model and the number defined in the

Chemical Component Dictionary. Similar counts are reported in the Torsion and Rings columns. '-' means no outliers of that kind were identified.

Mol	Type	Chain	Res	Link	Chirals	Torsions	Rings
5	NAG	B	912	1	-	0/6/23/26	0/1/1/1
8	GOL	B	923	-	-	0/4/4/4	-
5	NAG	B	908	1	-	2/6/23/26	0/1/1/1
5	NAG	B	914	1	-	0/6/23/26	0/1/1/1
5	NAG	B	913	1	-	1/6/23/26	0/1/1/1
6	C09	A	1014	-	-	0/2/4/4	0/3/3/3
5	NAG	A	1013	1	-	0/6/23/26	0/1/1/1
5	NAG	A	1011	1	-	2/6/23/26	0/1/1/1
6	C09	B	901	-	-	0/2/4/4	0/3/3/3
5	NAG	A	1012	1	-	0/6/23/26	0/1/1/1
5	NAG	A	1007	1	-	2/6/23/26	0/1/1/1

All (4) bond length outliers are listed below:

Mol	Chain	Res	Type	Atoms	Z	Observed(Å)	Ideal(Å)
6	A	1014	C09	C2-C1	4.15	1.49	1.41
6	B	901	C09	C2-C1	4.01	1.48	1.41
6	B	901	C09	C2-C3	-3.73	1.37	1.45
6	A	1014	C09	C2-C3	-3.42	1.38	1.45

The worst 5 of 10 bond angle outliers are listed below:

Mol	Chain	Res	Type	Atoms	Z	Observed(°)	Ideal(°)
5	A	1011	NAG	C1-O5-C5	2.93	116.11	112.19
6	B	901	C09	O-C6-C5	-2.59	103.68	110.94
6	A	1014	C09	O-C6-C5	-2.55	103.81	110.94
5	B	914	NAG	C1-O5-C5	2.46	115.49	112.19
5	A	1012	NAG	C1-O5-C5	2.34	115.33	112.19

There are no chirality outliers.

5 of 7 torsion outliers are listed below:

Mol	Chain	Res	Type	Atoms
5	A	1007	NAG	C8-C7-N2-C2
5	A	1007	NAG	O7-C7-N2-C2
5	B	908	NAG	C8-C7-N2-C2
5	B	908	NAG	O7-C7-N2-C2
5	A	1011	NAG	C8-C7-N2-C2

There are no ring outliers.

7 monomers are involved in 7 short contacts:

Mol	Chain	Res	Type	Clashes	Symm-Clashes
7	A	1022	SO4	1	0
7	A	1016	SO4	1	0
5	B	914	NAG	0	1
7	A	1020	SO4	1	0
7	B	920	SO4	1	0
7	A	1021	SO4	1	0
7	B	917	SO4	1	0

5.7 Other polymers [i](#)

There are no such residues in this entry.

5.8 Polymer linkage issues [i](#)

There are no chain breaks in this entry.

6 Fit of model and data [i](#)

6.1 Protein, DNA and RNA chains [i](#)

In the following table, the column labelled '#RSRZ > 2' contains the number (and percentage) of RSRZ outliers, followed by percent RSRZ outliers for the chain as percentile scores relative to all X-ray entries and entries of similar resolution. The OWAB column contains the minimum, median, 95th percentile and maximum values of the occupancy-weighted average B-factor per residue. The column labelled 'Q < 0.9' lists the number of (and percentage) of residues with an average occupancy less than 0.9.

Mol	Chain	Analysed	<RSRZ>	#RSRZ>2	OWAB(Å ²)	Q<0.9
1	A	747/811 (92%)	0.08	21 (2%) 55 53	16, 36, 71, 92	0
1	B	746/811 (91%)	0.02	14 (1%) 66 65	16, 34, 64, 91	0
All	All	1493/1622 (92%)	0.05	35 (2%) 61 59	16, 35, 69, 92	0

The worst 5 of 35 RSRZ outliers are listed below:

Mol	Chain	Res	Type	RSRZ
1	B	758	THR	6.0
1	B	759	LYS	4.7
1	B	735	VAL	4.2
1	A	470	PHE	4.1
1	A	782	ASP	3.8

6.2 Non-standard residues in protein, DNA, RNA chains [i](#)

There are no non-standard protein/DNA/RNA residues in this entry.

6.3 Carbohydrates [i](#)

In the following table, the Atoms column lists the number of modelled atoms in the group and the number defined in the chemical component dictionary. The B-factors column lists the minimum, median, 95th percentile and maximum values of B factors of atoms in the group. The column labelled 'Q < 0.9' lists the number of atoms with occupancy less than 0.9.

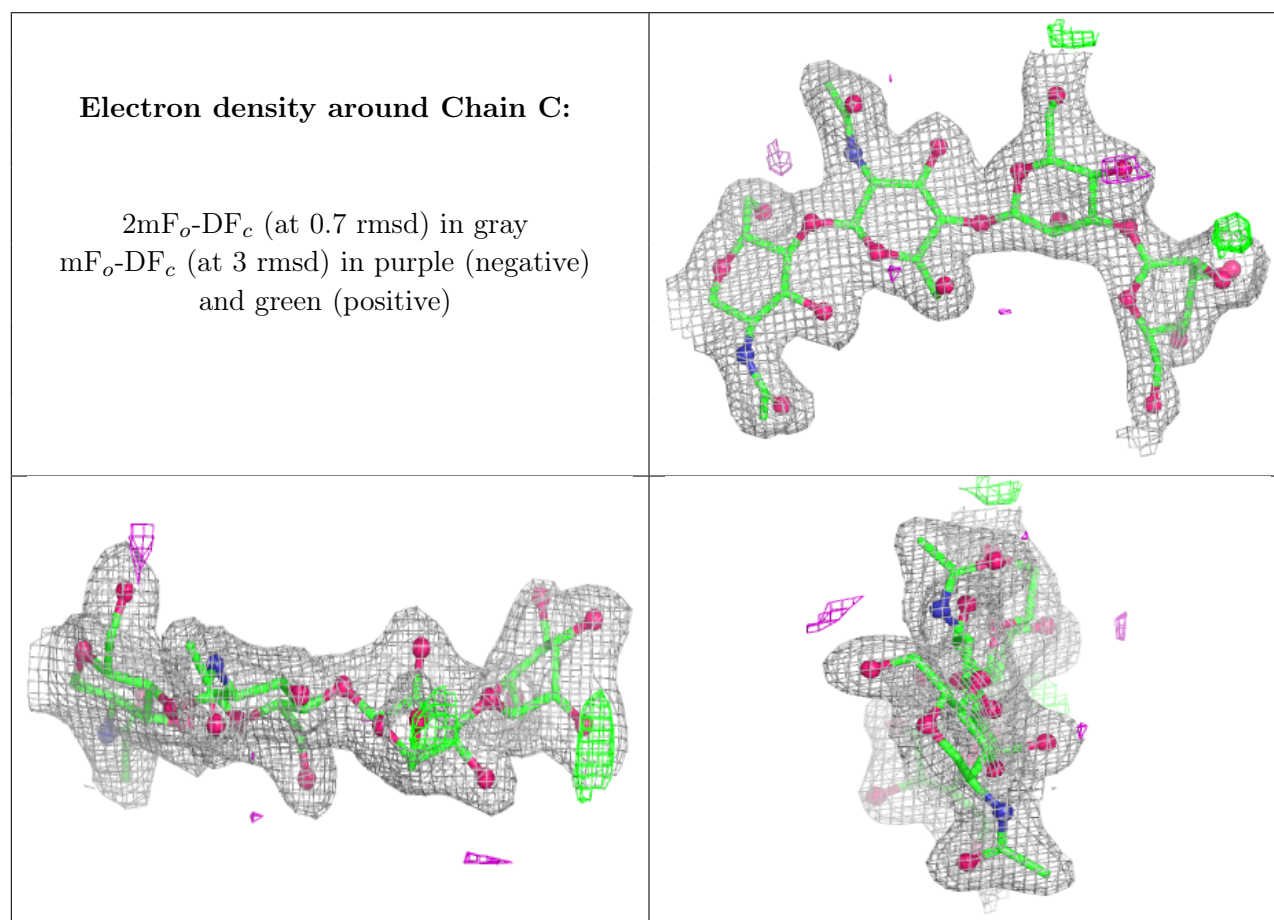
Mol	Type	Chain	Res	Atoms	RSCC	RSR	B-factors(Å ²)	Q<0.9
3	NAG	D	2	14/15	0.76	0.13	44,52,62,65	0
3	NAG	G	2	14/15	0.81	0.12	42,52,61,66	0
2	MAN	C	4	11/12	0.84	0.12	54,56,58,58	0
2	MAN	F	4	11/12	0.84	0.12	54,58,60,63	0
4	BMA	H	3	11/12	0.85	0.10	48,54,59,59	0

Continued on next page...

Continued from previous page...

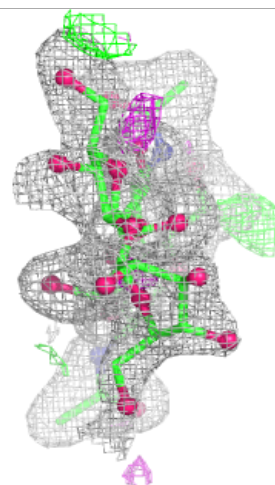
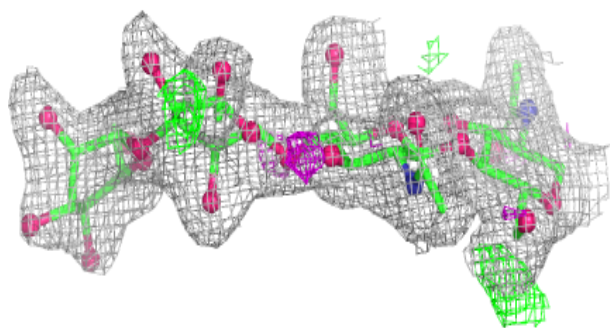
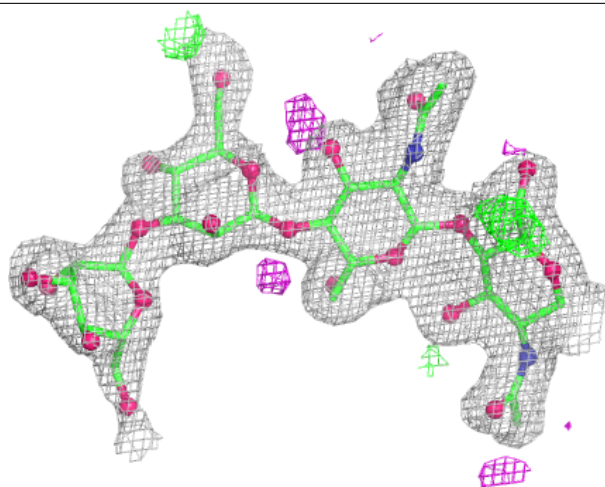
Mol	Type	Chain	Res	Atoms	RSCC	RSR	B-factors(\AA^2)	Q<0.9
4	BMA	E	3	11/12	0.87	0.10	45,52,55,56	0
2	BMA	F	3	11/12	0.87	0.10	34,46,54,54	0
4	NAG	E	2	14/15	0.93	0.08	22,25,39,46	0
3	NAG	G	1	14/15	0.93	0.08	15,24,30,39	0
2	BMA	C	3	11/12	0.93	0.09	44,48,53,53	0
4	NAG	H	2	14/15	0.94	0.07	23,26,36,42	0
2	NAG	C	1	14/15	0.95	0.07	21,27,31,32	0
4	NAG	E	1	14/15	0.95	0.06	16,21,26,27	0
2	NAG	C	2	14/15	0.95	0.07	23,31,35,40	0
3	NAG	D	1	14/15	0.95	0.06	17,22,29,36	0
4	NAG	H	1	14/15	0.95	0.06	18,22,28,30	0
2	NAG	F	1	14/15	0.95	0.06	18,20,29,34	0
2	NAG	F	2	14/15	0.95	0.06	21,25,30,33	0

The following is a graphical depiction of the model fit to experimental electron density for oligosaccharide. Each fit is shown from different orientation to approximate a three-dimensional view.



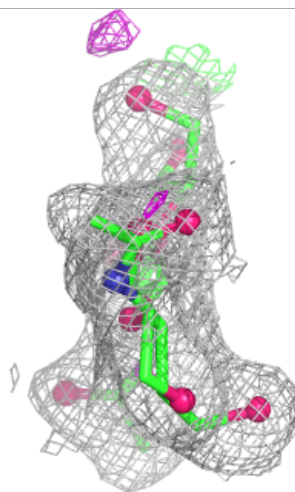
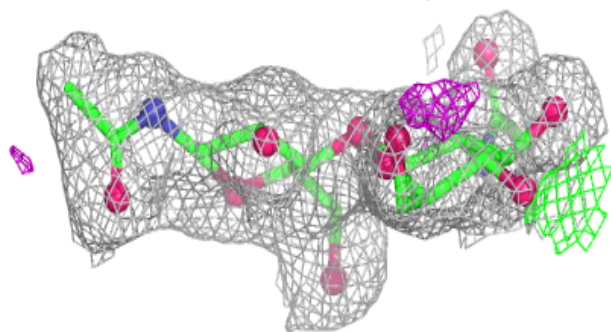
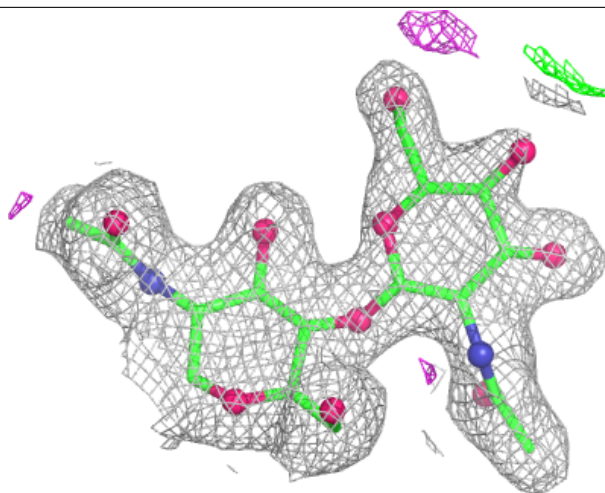
Electron density around Chain F:

$2mF_o-DF_c$ (at 0.7 rmsd) in gray
 mF_o-DF_c (at 3 rmsd) in purple (negative)
and green (positive)



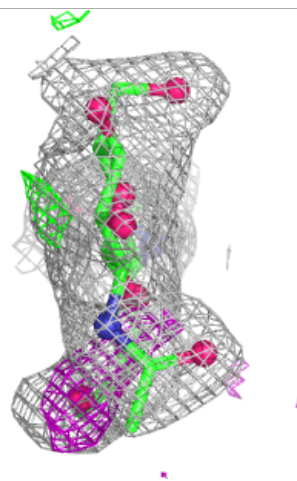
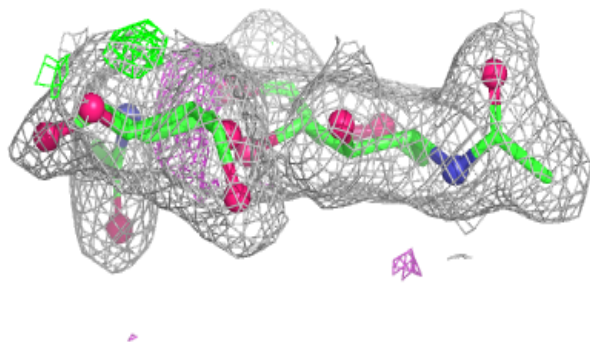
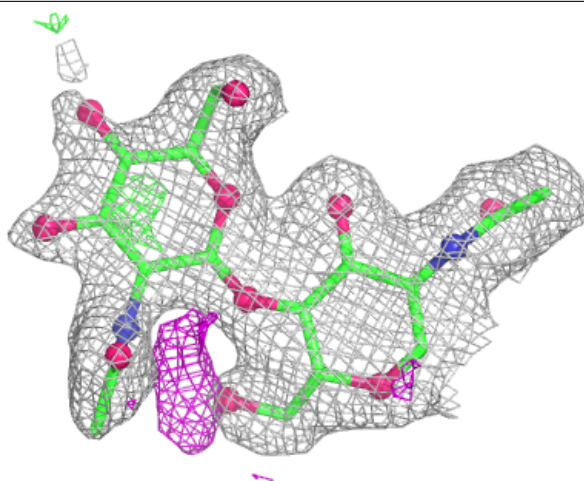
Electron density around Chain D:

$2mF_o-DF_c$ (at 0.7 rmsd) in gray
 mF_o-DF_c (at 3 rmsd) in purple (negative)
and green (positive)



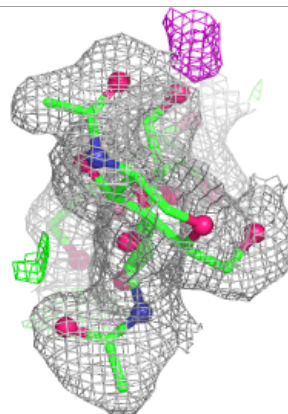
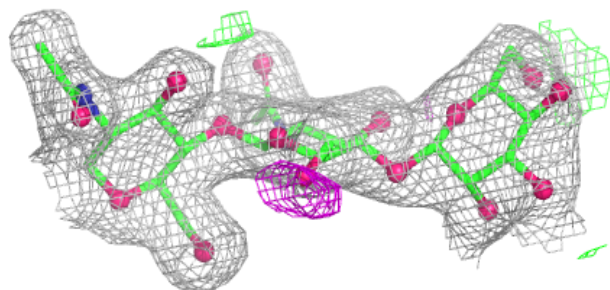
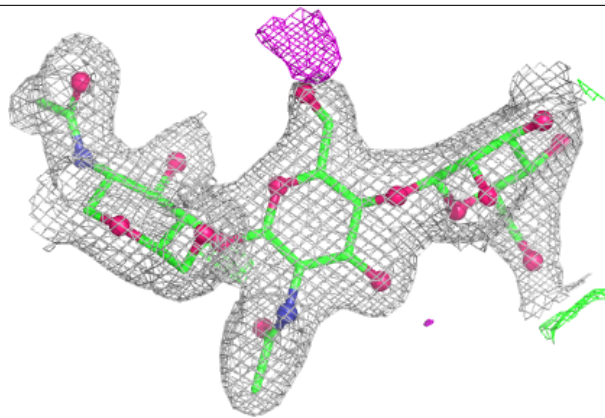
Electron density around Chain G:

$2mF_o-DF_c$ (at 0.7 rmsd) in gray
 mF_o-DF_c (at 3 rmsd) in purple (negative)
and green (positive)

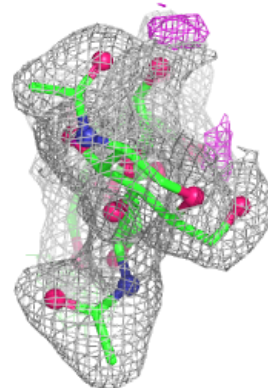
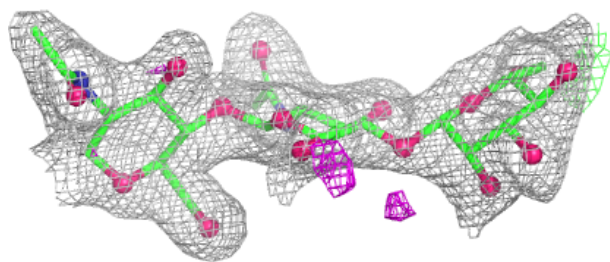
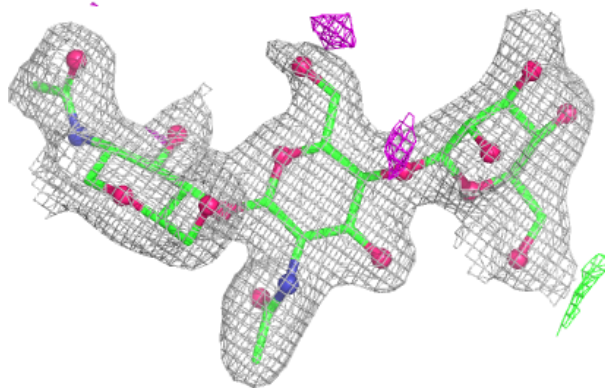


Electron density around Chain E:

$2mF_o-DF_c$ (at 0.7 rmsd) in gray
 mF_o-DF_c (at 3 rmsd) in purple (negative)
and green (positive)

**Electron density around Chain H:**

$2mF_o-DF_c$ (at 0.7 rmsd) in gray
 mF_o-DF_c (at 3 rmsd) in purple (negative)
and green (positive)



6.4 Ligands [i](#)

In the following table, the Atoms column lists the number of modelled atoms in the group and the number defined in the chemical component dictionary. The B-factors column lists the minimum, median, 95th percentile and maximum values of B factors of atoms in the group. The column labelled 'Q< 0.9' lists the number of atoms with occupancy less than 0.9.

Mol	Type	Chain	Res	Atoms	RSCC	RSR	B-factors(Å ²)	Q<0.9
7	SO4	A	1020	5/5	0.65	0.10	95,97,97,99	0
7	SO4	B	922	5/5	0.75	0.16	85,85,86,87	0
7	SO4	B	918	5/5	0.77	0.10	84,87,88,89	0
5	NAG	B	908	14/15	0.78	0.13	49,58,67,71	0
7	SO4	B	919	5/5	0.80	0.11	85,85,86,87	0
7	SO4	A	1022	5/5	0.80	0.11	78,79,82,82	0
7	SO4	A	1019	5/5	0.83	0.11	84,84,85,86	0
5	NAG	B	912	14/15	0.83	0.13	50,57,61,62	0
5	NAG	A	1013	14/15	0.85	0.12	43,50,56,61	0
5	NAG	A	1011	14/15	0.85	0.11	52,57,65,67	0
7	SO4	B	917	5/5	0.85	0.10	63,64,66,67	0
7	SO4	B	921	5/5	0.86	0.09	89,89,90,92	0
8	GOL	B	923	6/6	0.86	0.13	38,43,46,50	0
7	SO4	A	1021	5/5	0.87	0.14	82,83,85,85	0
7	SO4	A	1018	5/5	0.87	0.11	91,92,93,94	0
5	NAG	B	913	14/15	0.90	0.09	38,41,46,47	0
5	NAG	A	1007	14/15	0.90	0.09	40,49,61,67	0
5	NAG	A	1012	14/15	0.91	0.08	38,45,49,49	0
7	SO4	B	916	5/5	0.92	0.08	54,56,59,61	0
5	NAG	B	914	14/15	0.92	0.09	32,46,60,63	0
7	SO4	B	920	5/5	0.92	0.08	65,65,68,70	0
7	SO4	A	1017	5/5	0.93	0.08	67,68,70,71	0
7	SO4	B	915	5/5	0.94	0.12	38,41,52,53	0
6	C09	B	901	18/18	0.96	0.06	17,22,27,29	0
6	C09	A	1014	18/18	0.97	0.05	15,21,32,32	0
7	SO4	A	1015	5/5	0.97	0.08	34,40,46,50	0
7	SO4	A	1016	5/5	0.97	0.09	42,46,50,57	0

6.5 Other polymers [i](#)

There are no such residues in this entry.