



Full wwPDB EM Validation Report ⓘ

Dec 1, 2022 – 12:10 PM JST

PDB ID : 7W56
EMDB ID : EMD-32315
Title : Cryo-EM structure of the neuromedin S-bound neuromedin U receptor 1-Gq protein complex
Authors : You, C.; Xu, H.E.; Jiang, Y.
Deposited on : 2021-11-29
Resolution : 2.90 Å(reported)

This is a Full wwPDB EM Validation Report for a publicly released PDB entry.

We welcome your comments at validation@mail.wwpdb.org

A user guide is available at

<https://www.wwpdb.org/validation/2017/EMValidationReportHelp>

with specific help available everywhere you see the ⓘ symbol.

The types of validation reports are described at

<http://www.wwpdb.org/validation/2017/FAQs#types>.

The following versions of software and data (see [references ⓘ](#)) were used in the production of this report:

EMDB validation analysis : 0.0.1.dev43
MolProbity : 4.02b-467
Percentile statistics : 20191225.v01 (using entries in the PDB archive December 25th 2019)
MapQ : 1.9.9
Ideal geometry (proteins) : Engh & Huber (2001)
Ideal geometry (DNA, RNA) : Parkinson et al. (1996)
Validation Pipeline (wwPDB-VP) : 2.31.3

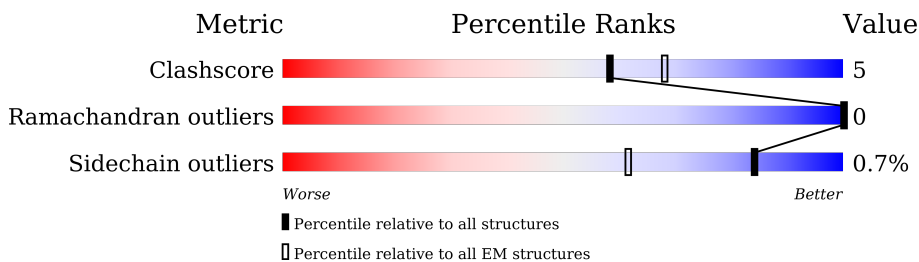
1 Overall quality at a glance

The following experimental techniques were used to determine the structure:

ELECTRON MICROSCOPY

The reported resolution of this entry is 2.90 Å.

Percentile scores (ranging between 0-100) for global validation metrics of the entry are shown in the following graphic. The table shows the number of entries on which the scores are based.



Metric	Whole archive (#Entries)	EM structures (#Entries)
Clashscore	158937	4297
Ramachandran outliers	154571	4023
Sidechain outliers	154315	3826

The table below summarises the geometric issues observed across the polymeric chains and their fit to the map. The red, orange, yellow and green segments of the bar indicate the fraction of residues that contain outliers for ≥ 3 , 2, 1 and 0 types of geometric quality criteria respectively. A grey segment represents the fraction of residues that are not modelled. The numeric value for each fraction is indicated below the corresponding segment, with a dot representing fractions $\leq 5\%$. The upper red bar (where present) indicates the fraction of residues that have poor fit to the EM map (all-atom inclusion $< 40\%$). The numeric value is given above the bar.

Mol	Chain	Length	Quality of chain
1	A	361	
2	B	371	
3	C	34	
4	E	248	
5	G	70	
6	R	755	

2 Entry composition [i](#)

There are 6 unique types of molecules in this entry. The entry contains 17881 atoms, of which 8894 are hydrogens and 0 are deuteriums.

In the tables below, the AltConf column contains the number of residues with at least one atom in alternate conformation and the Trace column contains the number of residues modelled with at most 2 atoms.

- Molecule 1 is a protein called Guanine nucleotide-binding protein G(q) subunit alpha.

Mol	Chain	Residues	Atoms					AltConf	Trace	
			Total	C	H	N	O			S
1	A	230	3759	1195	1871	333	352	8	0	0

- Molecule 2 is a protein called Guanine nucleotide-binding protein G(I)/G(S)/G(T) subunit beta-1.

Mol	Chain	Residues	Atoms					AltConf	Trace	
			Total	C	H	N	O			S
2	B	341	5136	1612	2520	470	513	21	0	0

There are 32 discrepancies between the modelled and reference sequences:

Chain	Residue	Modelled	Actual	Comment	Reference
B	1	MET	-	initiating methionine	UNP P62873
B	2	GLY	-	expression tag	UNP P62873
B	3	SER	-	expression tag	UNP P62873
B	4	LEU	-	expression tag	UNP P62873
B	5	LEU	-	expression tag	UNP P62873
B	6	GLN	-	expression tag	UNP P62873
B	346	GLY	-	expression tag	UNP P62873
B	347	SER	-	expression tag	UNP P62873
B	348	SER	-	expression tag	UNP P62873
B	349	GLY	-	expression tag	UNP P62873
B	350	GLY	-	expression tag	UNP P62873
B	351	GLY	-	expression tag	UNP P62873
B	352	GLY	-	expression tag	UNP P62873
B	353	SER	-	expression tag	UNP P62873
B	354	GLY	-	expression tag	UNP P62873
B	355	GLY	-	expression tag	UNP P62873
B	356	GLY	-	expression tag	UNP P62873
B	357	GLY	-	expression tag	UNP P62873
B	358	SER	-	expression tag	UNP P62873
B	359	SER	-	expression tag	UNP P62873

Continued on next page...

Continued from previous page...

Chain	Residue	Modelled	Actual	Comment	Reference
B	360	GLY	-	expression tag	UNP P62873
B	361	VAL	-	expression tag	UNP P62873
B	362	SER	-	expression tag	UNP P62873
B	363	GLY	-	expression tag	UNP P62873
B	364	TRP	-	expression tag	UNP P62873
B	365	ARG	-	expression tag	UNP P62873
B	366	LEU	-	expression tag	UNP P62873
B	367	PHE	-	expression tag	UNP P62873
B	368	LYS	-	expression tag	UNP P62873
B	369	LYS	-	expression tag	UNP P62873
B	370	ILE	-	expression tag	UNP P62873
B	371	SER	-	expression tag	UNP P62873

- Molecule 3 is a protein called Neuromedin-S.

Mol	Chain	Residues	Atoms					AltConf	Trace
			Total	C	H	N	O		
3	C	9	156	54	77	16	9	0	1

There is a discrepancy between the modelled and reference sequences:

Chain	Residue	Modelled	Actual	Comment	Reference
C	10	GLN	-	expression tag	UNP Q5H8A3

- Molecule 4 is a protein called scFv16.

Mol	Chain	Residues	Atoms						AltConf	Trace
			Total	C	H	N	O	S		
4	E	232	3504	1131	1722	295	346	10	0	0

- Molecule 5 is a protein called Guanine nucleotide-binding protein G(I)/G(S)/G(O) subunit gamma-2.

Mol	Chain	Residues	Atoms					AltConf	Trace	
			Total	C	H	N	O			S
5	G	57	885	273	449	77	83	3	0	0

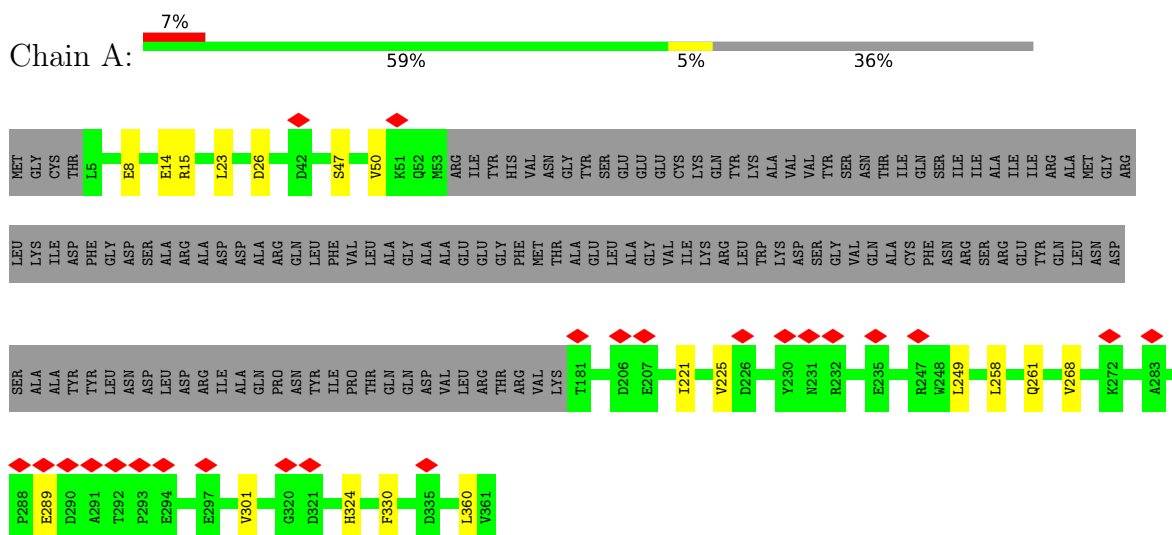
- Molecule 6 is a protein called Neuromedin U Receptor 1.

Mol	Chain	Residues	Atoms						AltConf	Trace
			Total	C	H	N	O	S		
6	R	276	4441	1441	2255	377	346	22	0	0

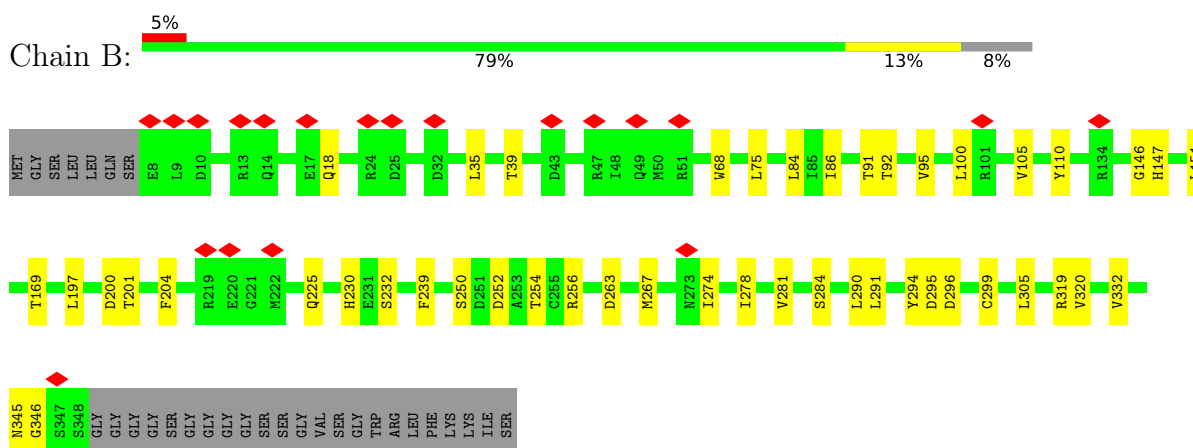
3 Residue-property plots [i](#)

These plots are drawn for all protein, RNA, DNA and oligosaccharide chains in the entry. The first graphic for a chain summarises the proportions of the various outlier classes displayed in the second graphic. The second graphic shows the sequence view annotated by issues in geometry and atom inclusion in map density. Residues are color-coded according to the number of geometric quality criteria for which they contain at least one outlier: green = 0, yellow = 1, orange = 2 and red = 3 or more. A red diamond above a residue indicates a poor fit to the EM map for this residue (all-atom inclusion < 40%). Stretches of 2 or more consecutive residues without any outlier are shown as a green connector. Residues present in the sample, but not in the model, are shown in grey.

- Molecule 1: Guanine nucleotide-binding protein G(q) subunit alpha



- Molecule 2: Guanine nucleotide-binding protein G(I)/G(S)/G(T) subunit beta-1



- Molecule 3: Neuromedin-S



ARG
SER
GLY
GLU
TYR
ASN
PHE
GLY
ALA
LEU
LYS
ILE
ASP
GLY
ILE
HIS
VAL
ILE
ILE
PRO
TYR
GLY
GLU
GLY
LEU
SER
SER
VAL
ALA
ASP
GLN
MET
MET
ALA
GLN
ILE
GLY
GLU
GLU
VAL
PHE
LYS
VAL
VAL
VAL
TYR
PRO
VAL
ASP
ASP
HIS
HIS
PHE
LYS
VAL
VAL
ILE
LEU
PRO
TYR
GLY
THR
THR
LEU
VAL

MET
LEU
ASN
TYR
PHE
GLY
ARG
PRO
TYR
GLU
GLY
ILE
ALA
VAL
PHE
ASP
GLY
LYS
LYS
ILE
THR
SER
VAL
THR
THR
GLY
THR
LEU
TRP
ASN
GLY
ASN
ASN
LYS
ILE
ILE
ASP
GLU
ARG
LEU
ILE
THR
PRO
ASP
HIS
GLY
SER
MET
LEU
PHE
ARG
VAL
THR
ILE
ASN
SER

4 Experimental information

Property	Value	Source
EM reconstruction method	SINGLE PARTICLE	Depositor
Imposed symmetry	POINT, Not provided	
Number of particles used	588662	Depositor
Resolution determination method	FSC 0.143 CUT-OFF	Depositor
CTF correction method	NONE	Depositor
Microscope	FEI TITAN KRIOS	Depositor
Voltage (kV)	300	Depositor
Electron dose ($e^-/\text{\AA}^2$)	61.8	Depositor
Minimum defocus (nm)	1100	Depositor
Maximum defocus (nm)	2200	Depositor
Magnification	Not provided	
Image detector	GATAN K3 (6k x 4k)	Depositor
Maximum map value	1.810	Depositor
Minimum map value	-0.016	Depositor
Average map value	0.002	Depositor
Map value standard deviation	0.030	Depositor
Recommended contour level	0.14	Depositor
Map size (\AA)	216.00002, 216.00002, 216.00002	wwPDB
Map dimensions	200, 200, 200	wwPDB
Map angles ($^\circ$)	90.0, 90.0, 90.0	wwPDB
Pixel spacing (\AA)	1.08, 1.08, 1.08	Depositor

5 Model quality [i](#)

5.1 Standard geometry [i](#)

The Z score for a bond length (or angle) is the number of standard deviations the observed value is removed from the expected value. A bond length (or angle) with $|Z| > 5$ is considered an outlier worth inspection. RMSZ is the root-mean-square of all Z scores of the bond lengths (or angles).

Mol	Chain	Bond lengths		Bond angles	
		RMSZ	# Z >5	RMSZ	# Z >5
1	A	0.32	0/1922	0.45	0/2588
2	B	0.39	0/2663	0.54	1/3610 (0.0%)
3	C	0.39	0/82	0.48	0/109
4	E	0.37	0/1826	0.52	0/2476
5	G	0.26	0/442	0.40	0/597
6	R	0.31	0/2241	0.48	0/3049
All	All	0.35	0/9176	0.50	1/12429 (0.0%)

Chiral center outliers are detected by calculating the chiral volume of a chiral center and verifying if the center is modelled as a planar moiety or with the opposite hand. A planarity outlier is detected by checking planarity of atoms in a peptide group, atoms in a mainchain group or atoms of a sidechain that are expected to be planar.

Mol	Chain	#Chirality outliers	#Planarity outliers
2	B	0	1

There are no bond length outliers.

All (1) bond angle outliers are listed below:

Mol	Chain	Res	Type	Atoms	Z	Observed($^{\circ}$)	Ideal($^{\circ}$)
2	B	151	LEU	CA-CB-CG	5.50	127.95	115.30

There are no chirality outliers.

All (1) planarity outliers are listed below:

Mol	Chain	Res	Type	Group
2	B	296	ASP	Peptide

5.2 Too-close contacts

In the following table, the Non-H and H(model) columns list the number of non-hydrogen atoms and hydrogen atoms in the chain respectively. The H(added) column lists the number of hydrogen atoms added and optimized by MolProbity. The Clashes column lists the number of clashes within the asymmetric unit, whereas Symm-Clashes lists symmetry-related clashes.

Mol	Chain	Non-H	H(model)	H(added)	Clashes	Symm-Clashes
1	A	1888	1871	1878	11	0
2	B	2616	2520	2518	30	0
3	C	79	77	76	4	0
4	E	1782	1722	1721	20	0
5	G	436	449	448	2	0
6	R	2186	2255	2279	30	0
All	All	8987	8894	8920	88	0

The all-atom clashscore is defined as the number of clashes found per 1000 atoms (including hydrogen atoms). The all-atom clashscore for this structure is 5.

All (88) close contacts within the same asymmetric unit are listed below, sorted by their clash magnitude.

Atom-1	Atom-2	Interatomic distance (Å)	Clash overlap (Å)
6:R:139:LEU:HA	6:R:197:THR:HG21	1.68	0.74
2:B:39:THR:HG21	2:B:305:LEU:HB3	1.69	0.74
1:A:15:ARG:NH2	2:B:95:VAL:O	2.25	0.68
2:B:230:HIS:CG	2:B:250:SER:HG	2.12	0.68
6:R:223:ARG:HB3	6:R:224:PRO:HD2	1.75	0.67
2:B:345:ASN:ND2	5:G:58:ASN:OD1	2.30	0.64
2:B:295:ASP:HA	2:B:319:ARG:HB2	1.81	0.62
6:R:200:HIS:NE2	6:R:221:LEU:HD12	2.15	0.61
2:B:225:GLN:NE2	2:B:263:ASP:OD1	2.36	0.59
6:R:161:VAL:HG21	6:R:168:GLN:OE1	2.06	0.56
4:E:63:VAL:HG13	4:E:67:PHE:CD2	2.41	0.55
2:B:284:SER:HG	5:G:47:ASP:CG	2.10	0.55
4:E:5:GLU:N	4:E:5:GLU:OE1	2.40	0.55
3:C:8:ARG:NE	6:R:117:GLU:OE2	2.37	0.55
6:R:204:GLN:OE1	6:R:205:LEU:N	2.40	0.55
1:A:14:GLU:OE2	4:E:56:THR:OG1	2.13	0.54
2:B:39:THR:HG21	2:B:305:LEU:CB	2.37	0.54
4:E:195:LEU:HG	4:E:198:GLY:HA3	1.90	0.54
1:A:289:GLU:OE1	1:A:289:GLU:N	2.37	0.53
2:B:197:LEU:HD23	2:B:204:PHE:HB3	1.91	0.53
6:R:158:GLU:O	6:R:161:VAL:HG22	2.09	0.53

Continued on next page...

Continued from previous page...

Atom-1	Atom-2	Interatomic distance (Å)	Clash overlap (Å)
6:R:223:ARG:HB3	6:R:224:PRO:CD	2.39	0.53
2:B:230:HIS:CE1	2:B:250:SER:HG	2.26	0.53
6:R:146:LEU:HD22	6:R:239:PHE:CD2	2.43	0.53
2:B:278:ILE:CD1	2:B:294:TYR:CE2	2.91	0.53
6:R:221:LEU:HD21	6:R:228:TYR:CB	2.39	0.52
6:R:221:LEU:HD11	6:R:228:TYR:CD1	2.45	0.51
4:E:96:VAL:HG11	4:E:107:PHE:CD2	2.46	0.51
2:B:281:VAL:CG1	2:B:290:LEU:HD11	2.41	0.50
2:B:299:CYS:SG	2:B:320:VAL:HG21	2.52	0.49
2:B:146:GLY:O	2:B:147:HIS:CG	2.65	0.49
2:B:230:HIS:ND1	2:B:250:SER:OG	2.34	0.49
6:R:221:LEU:HD11	6:R:228:TYR:CE1	2.47	0.49
2:B:91:THR:O	2:B:92:THR:OG1	2.27	0.48
6:R:221:LEU:HD21	6:R:228:TYR:CG	2.50	0.47
2:B:169:THR:HG22	2:B:169:THR:O	2.15	0.47
2:B:100:LEU:CD1	2:B:105:VAL:HG21	2.45	0.47
2:B:232:SER:OG	2:B:252:ASP:OD2	2.22	0.47
6:R:199:LEU:HG	6:R:223:ARG:HD2	1.96	0.47
1:A:23:LEU:O	1:A:26:ASP:OD1	2.32	0.46
2:B:274:ILE:HG21	2:B:294:TYR:CE2	2.50	0.46
6:R:163:VAL:HG13	6:R:257:ARG:HD2	1.97	0.46
4:E:11:VAL:HG11	4:E:85:LEU:HD12	1.98	0.45
4:E:90:THR:O	4:E:90:THR:HG23	2.15	0.45
6:R:193:SER:O	6:R:197:THR:HG23	2.16	0.45
2:B:345:ASN:OD1	2:B:346:GLY:N	2.48	0.45
4:E:62:THR:HG23	4:E:63:VAL:HG23	1.99	0.45
2:B:200:ASP:O	2:B:201:THR:OG1	2.33	0.45
2:B:100:LEU:HD13	2:B:105:VAL:HG21	1.97	0.45
4:E:8:GLY:O	4:E:17:ARG:NH1	2.50	0.45
6:R:95:THR:HG23	6:R:172:MET:SD	2.58	0.44
1:A:221:ILE:CD1	1:A:249:LEU:HD13	2.48	0.44
2:B:35:LEU:HD23	2:B:267:MET:HB2	2.00	0.44
2:B:75:LEU:O	2:B:86:ILE:HA	2.18	0.44
4:E:50:ILE:O	4:E:50:ILE:HG23	2.16	0.44
6:R:175:ARG:O	6:R:178:VAL:HG12	2.18	0.44
1:A:225:VAL:CG1	1:A:258:LEU:HD23	2.47	0.43
4:E:87:SER:O	4:E:90:THR:HG22	2.18	0.43
4:E:172:THR:HG21	4:E:212:PHE:HE2	1.82	0.43
6:R:302:LEU:CD2	6:R:355:LEU:HB3	2.48	0.43
2:B:68:TRP:CE2	2:B:75:LEU:HD21	2.52	0.43
1:A:261:GLN:HG3	1:A:330:PHE:HB3	2.01	0.43

Continued on next page...

Continued from previous page...

Atom-1	Atom-2	Interatomic distance (Å)	Clash overlap (Å)
6:R:165:HIS:CG	6:R:166:PRO:HD3	2.54	0.43
1:A:360:LEU:HD21	6:R:159:ARG:HD3	2.00	0.43
3:C:9:ASN:OD1	3:C:10:GLN:N	2.52	0.42
4:E:247:LEU:H	4:E:247:LEU:HD23	1.85	0.42
6:R:78:ASN:HA	6:R:81:THR:HG22	2.01	0.42
6:R:242:LEU:HB3	6:R:243:PRO:HD3	2.02	0.42
3:C:9:ASN:ND2	6:R:196:ASN:OD1	2.52	0.42
3:C:10:GLN:N	6:R:142:GLU:HB2	2.34	0.42
6:R:110:LEU:O	6:R:115:PRO:HD3	2.19	0.42
1:A:8:GLU:OE2	4:E:175:TYR:OH	2.28	0.42
4:E:174:LEU:HD11	4:E:229:CYS:SG	2.59	0.42
1:A:47:SER:HA	1:A:50:VAL:HG22	2.02	0.41
4:E:149:VAL:HG11	4:E:219:LEU:HD13	2.01	0.41
4:E:191:ARG:O	4:E:192:MET:C	2.59	0.41
6:R:160:TYR:CE1	6:R:163:VAL:HG21	2.55	0.41
2:B:254:THR:HG21	2:B:256:ARG:NH1	2.36	0.41
1:A:268:VAL:CG1	1:A:301:VAL:HG22	2.50	0.41
2:B:291:LEU:HD22	2:B:332:VAL:HG11	2.03	0.41
2:B:294:TYR:O	2:B:295:ASP:HB3	2.21	0.41
6:R:158:GLU:O	6:R:161:VAL:HG13	2.21	0.41
2:B:84:LEU:HG	2:B:100:LEU:HD11	2.03	0.41
4:E:33:MET:HB3	4:E:78:LEU:HD22	2.02	0.40
4:E:201:ASP:OD2	4:E:218:ARG:NH1	2.54	0.40
6:R:130:GLY:O	6:R:134:CYS:N	2.50	0.40
4:E:19:LEU:HD22	4:E:114:THR:HG21	2.03	0.40
6:R:109:VAL:HG22	6:R:144:VAL:HG23	2.04	0.40

There are no symmetry-related clashes.

5.3 Torsion angles [\(i\)](#)

5.3.1 Protein backbone [\(i\)](#)

In the following table, the Percentiles column shows the percent Ramachandran outliers of the chain as a percentile score with respect to all PDB entries followed by that with respect to all EM entries.

The Analysed column shows the number of residues for which the backbone conformation was analysed, and the total number of residues.

Mol	Chain	Analysed	Favoured	Allowed	Outliers	Percentiles	
1	A	226/361 (63%)	220 (97%)	6 (3%)	0	100	100
2	B	339/371 (91%)	324 (96%)	15 (4%)	0	100	100
3	C	7/34 (21%)	7 (100%)	0	0	100	100
4	E	228/248 (92%)	222 (97%)	6 (3%)	0	100	100
5	G	55/70 (79%)	55 (100%)	0	0	100	100
6	R	270/755 (36%)	260 (96%)	10 (4%)	0	100	100
All	All	1125/1839 (61%)	1088 (97%)	37 (3%)	0	100	100

There are no Ramachandran outliers to report.

5.3.2 Protein sidechains [i](#)

In the following table, the Percentiles column shows the percent sidechain outliers of the chain as a percentile score with respect to all PDB entries followed by that with respect to all EM entries.

The Analysed column shows the number of residues for which the sidechain conformation was analysed, and the total number of residues.

Mol	Chain	Analysed	Rotameric	Outliers	Percentiles	
1	A	207/316 (66%)	206 (100%)	1 (0%)	88	96
2	B	283/302 (94%)	280 (99%)	3 (1%)	73	92
3	C	8/28 (29%)	8 (100%)	0	100	100
4	E	196/202 (97%)	195 (100%)	1 (0%)	88	96
5	G	46/57 (81%)	46 (100%)	0	100	100
6	R	240/635 (38%)	238 (99%)	2 (1%)	81	94
All	All	980/1540 (64%)	973 (99%)	7 (1%)	84	95

All (7) residues with a non-rotameric sidechain are listed below:

Mol	Chain	Res	Type
1	A	324	HIS
2	B	18	GLN
2	B	110	TYR
2	B	239	PHE
4	E	174	LEU
6	R	210	ARG
6	R	319	MET

Sometimes sidechains can be flipped to improve hydrogen bonding and reduce clashes. All (3) such sidechains are listed below:

Mol	Chain	Res	Type
1	A	354	ASN
2	B	316	HIS
6	R	331	HIS

5.3.3 RNA [i](#)

There are no RNA molecules in this entry.

5.4 Non-standard residues in protein, DNA, RNA chains [i](#)

There are no non-standard protein/DNA/RNA residues in this entry.

5.5 Carbohydrates [i](#)

There are no monosaccharides in this entry.

5.6 Ligand geometry [i](#)

There are no ligands in this entry.

5.7 Other polymers [i](#)

There are no such residues in this entry.

5.8 Polymer linkage issues [i](#)

There are no chain breaks in this entry.

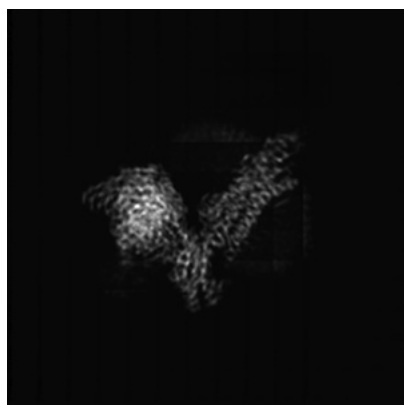
6 Map visualisation [i](#)

This section contains visualisations of the EMDB entry EMD-32315. These allow visual inspection of the internal detail of the map and identification of artifacts.

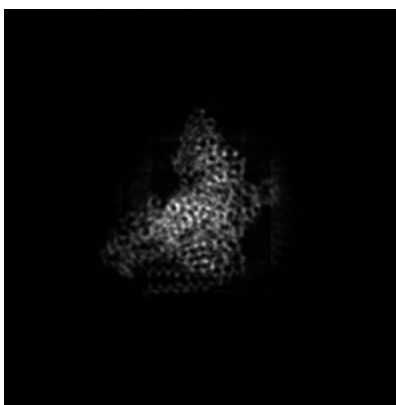
No raw map or half-maps were deposited for this entry and therefore no images, graphs, etc. pertaining to the raw map can be shown.

6.1 Orthogonal projections [i](#)

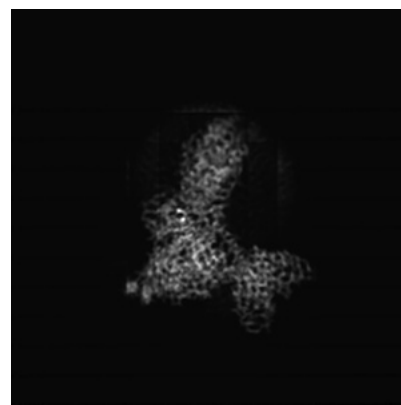
6.1.1 Primary map



X



Y



Z

The images above show the map projected in three orthogonal directions.

6.2 Central slices [i](#)

6.2.1 Primary map



X Index: 100



Y Index: 100



Z Index: 100

The images above show central slices of the map in three orthogonal directions.

6.3 Largest variance slices [i](#)

6.3.1 Primary map



X Index: 97



Y Index: 72



Z Index: 101

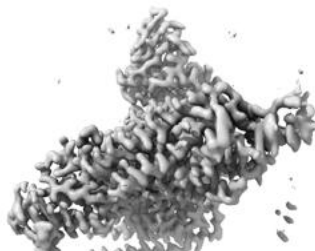
The images above show the largest variance slices of the map in three orthogonal directions.

6.4 Orthogonal surface views [i](#)

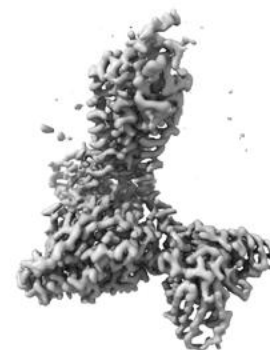
6.4.1 Primary map



X



Y



Z

The images above show the 3D surface view of the map at the recommended contour level 0.14. These images, in conjunction with the slice images, may facilitate assessment of whether an appropriate contour level has been provided.

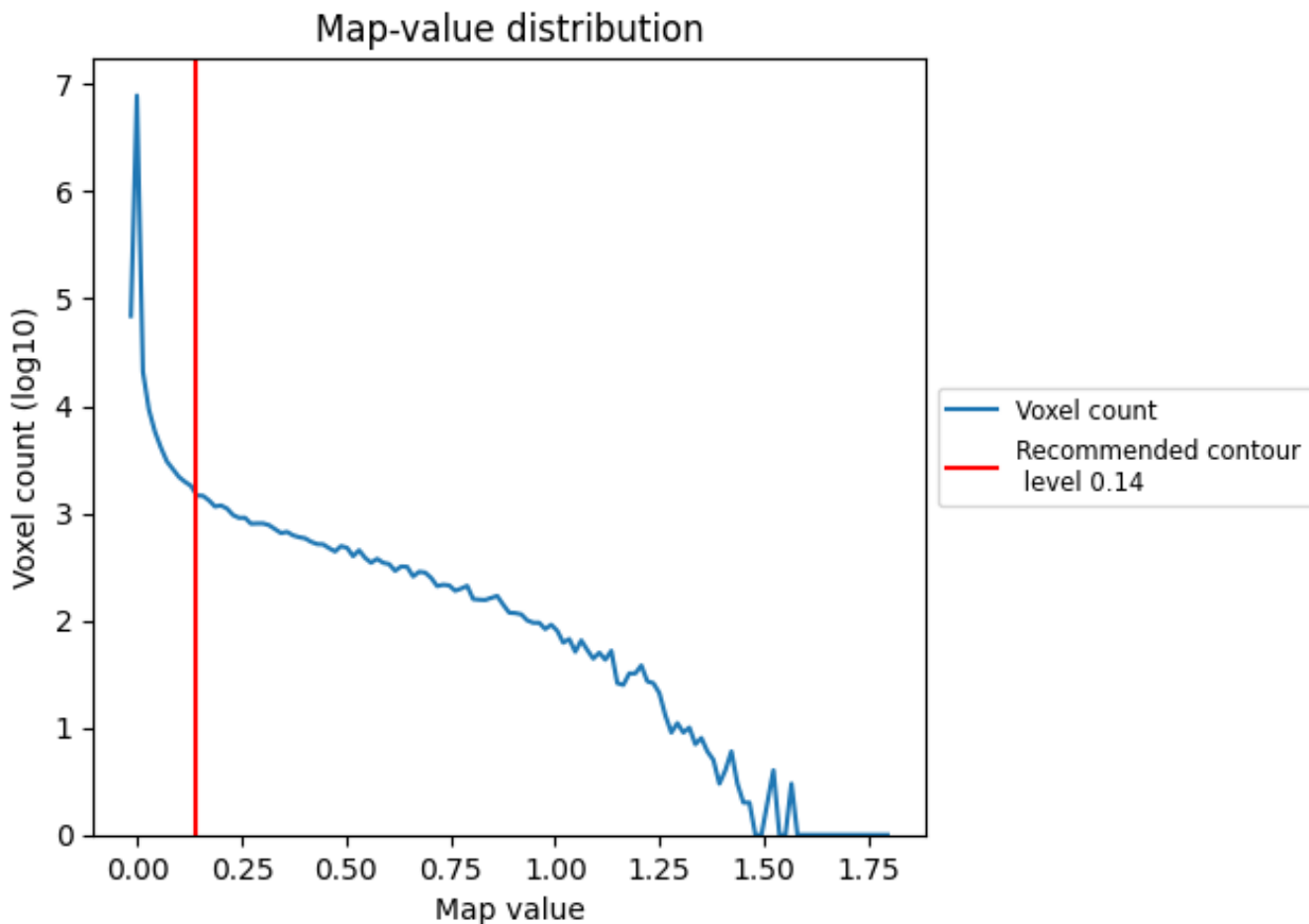
6.5 Mask visualisation

This section was not generated. No masks/segmentation were deposited.

7 Map analysis [i](#)

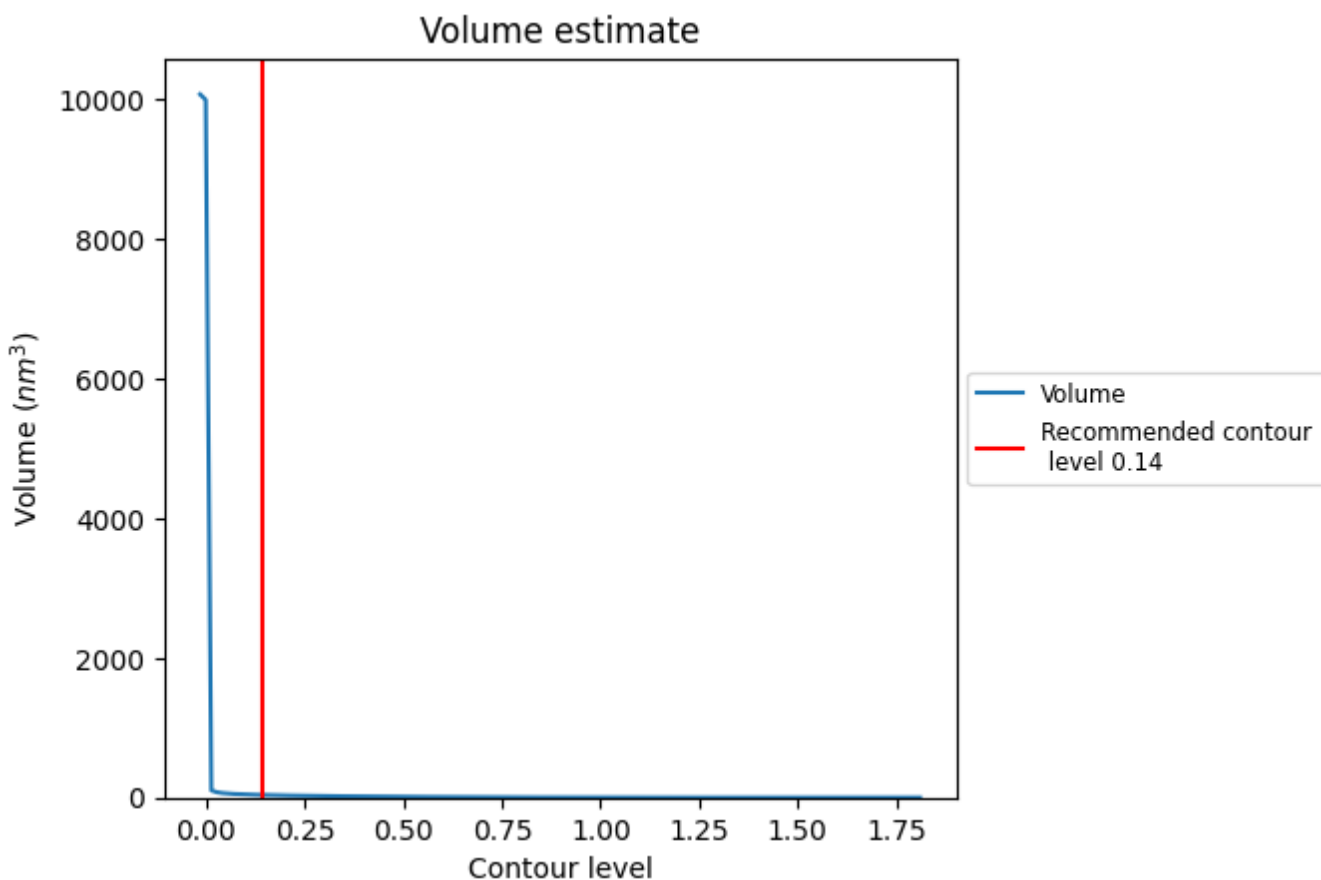
This section contains the results of statistical analysis of the map.

7.1 Map-value distribution [i](#)



The map-value distribution is plotted in 128 intervals along the x-axis. The y-axis is logarithmic. A spike in this graph at zero usually indicates that the volume has been masked.

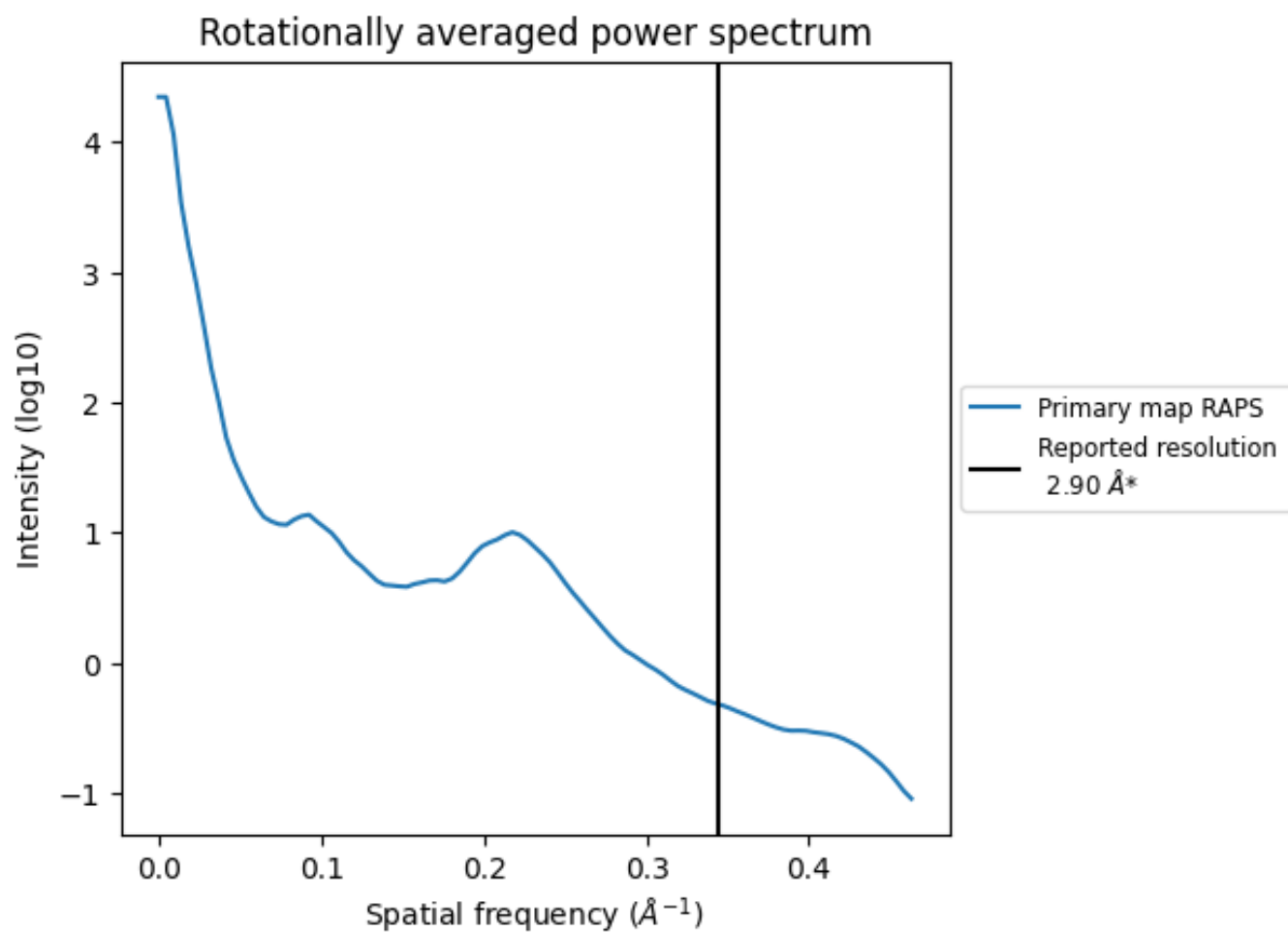
7.2 Volume estimate [i](#)



The volume at the recommended contour level is 37 nm³; this corresponds to an approximate mass of 34 kDa.

The volume estimate graph shows how the enclosed volume varies with the contour level. The recommended contour level is shown as a vertical line and the intersection between the line and the curve gives the volume of the enclosed surface at the given level.

7.3 Rotationally averaged power spectrum [i](#)



*Reported resolution corresponds to spatial frequency of 0.345\AA^{-1}

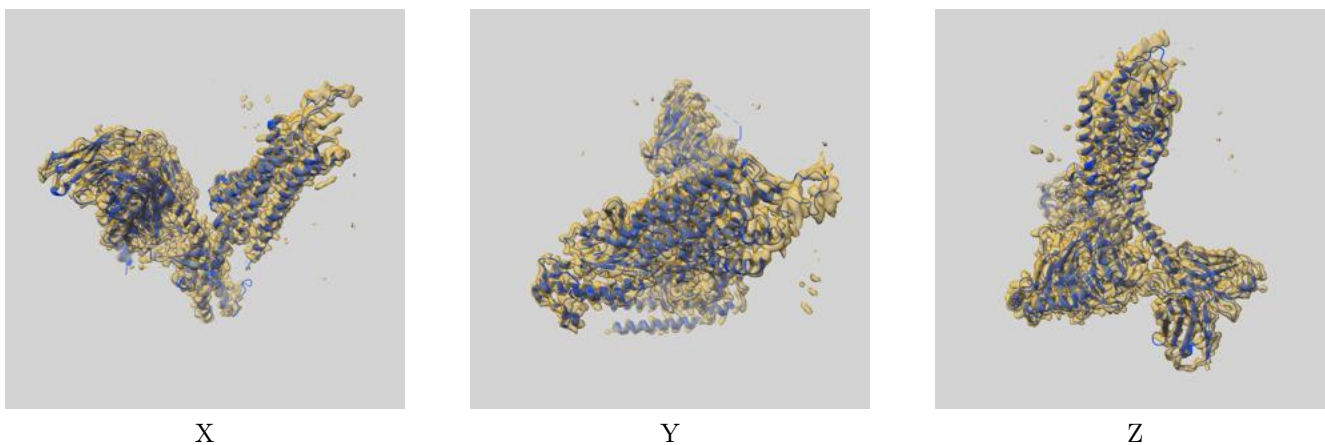
8 Fourier-Shell correlation

This section was not generated. No FSC curve or half-maps provided.

9 Map-model fit [i](#)

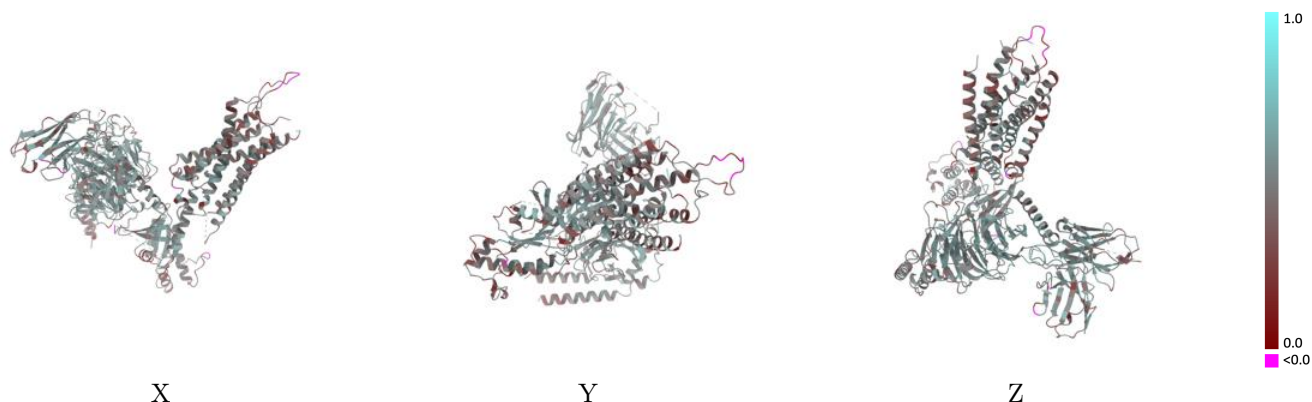
This section contains information regarding the fit between EMDB map EMD-32315 and PDB model 7W56. Per-residue inclusion information can be found in section 3 on page 6.

9.1 Map-model overlay [i](#)



The images above show the 3D surface view of the map at the recommended contour level 0.14 at 50% transparency in yellow overlaid with a ribbon representation of the model coloured in blue. These images allow for the visual assessment of the quality of fit between the atomic model and the map.

9.2 Q-score mapped to coordinate model [i](#)



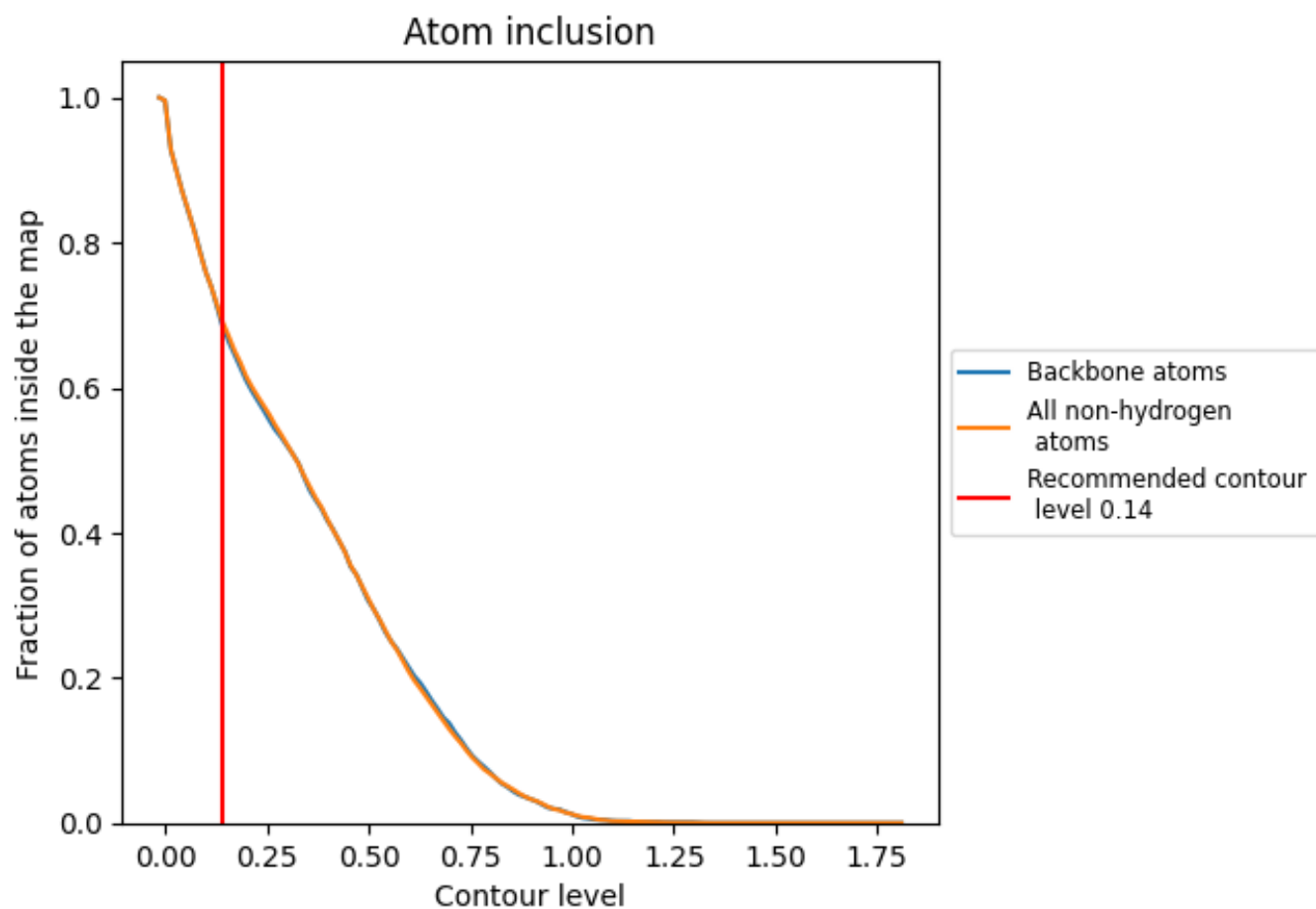
The images above show the model with each residue coloured according to its Q-score. This shows their resolvability in the map with higher Q-score values reflecting better resolvability. Please note: Q-score is calculating the resolvability of atoms, and thus high values are only expected at resolutions at which atoms can be resolved. Low Q-score values may therefore be expected for many entries.

9.3 Atom inclusion mapped to coordinate model [i](#)



The images above show the model with each residue coloured according to its atom inclusion. This shows to what extent they are inside the map at the recommended contour level (0.14).















9.4 Atom inclusion [i](#)



At the recommended contour level, 68% of all backbone atoms, 69% of all non-hydrogen atoms, are inside the map.

9.5 Map-model fit summary [i](#)

The table lists the average atom inclusion at the recommended contour level (0.14) and Q-score for the entire model and for each chain.

Chain	Atom inclusion	Q-score
All	 0.6904	 0.4770
A	 0.6737	 0.4630
B	 0.7426	 0.5190
C	 0.7333	 0.4470
E	 0.7015	 0.5000
G	 0.6061	 0.4560
R	 0.6637	 0.4250

