



# wwPDB EM Validation Summary Report ⓘ

Oct 14, 2024 – 06:57 PM JST

PDB ID : 7W9L  
EMDB ID : EMD-32369  
Title : Cryo-EM structure of human Nav1.7(E406K)-beta1-beta2 complex  
Authors : Yan, N.; Huang, G.; Liu, D.; Wei, P.; Shen, H.  
Deposited on : 2021-12-10  
Resolution : 3.50 Å(reported)

This is a wwPDB EM Validation Summary Report for a publicly released PDB entry.

We welcome your comments at [validation@mail.wwpdb.org](mailto:validation@mail.wwpdb.org)

A user guide is available at

<https://www.wwpdb.org/validation/2017/EMValidationReportHelp>

with specific help available everywhere you see the ⓘ symbol.

The types of validation reports are described at

<http://www.wwpdb.org/validation/2017/FAQs#types>.

---

The following versions of software and data (see [references ⓘ](#)) were used in the production of this report:

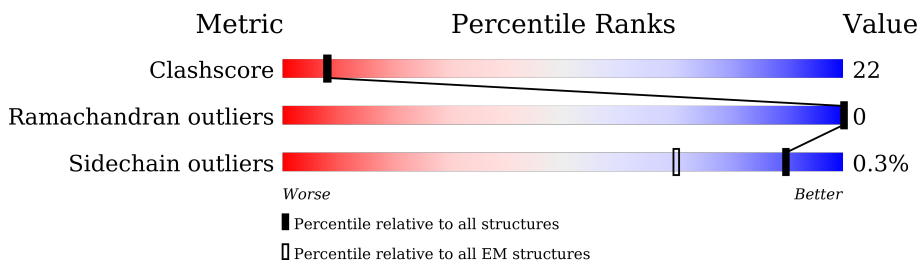
EMDB validation analysis : 0.0.1.dev113  
Mogul : 1.8.5 (274361), CSD as541be (2020)  
MolProbity : 4.02b-467  
buster-report : 1.1.7 (2018)  
Percentile statistics : 20231227.v01 (using entries in the PDB archive December 27th 2023)  
MapQ : 1.9.13  
Ideal geometry (proteins) : Engh & Huber (2001)  
Ideal geometry (DNA, RNA) : Parkinson et al. (1996)  
Validation Pipeline (wwPDB-VP) : 2.39

# 1 Overall quality at a glance

The following experimental techniques were used to determine the structure:  
*ELECTRON MICROSCOPY*

The reported resolution of this entry is 3.50 Å.

Percentile scores (ranging between 0-100) for global validation metrics of the entry are shown in the following graphic. The table shows the number of entries on which the scores are based.



Metric	Whole archive (#Entries)	EM structures (#Entries)
Clashscore	210492	15764
Ramachandran outliers	207382	16835
Sidechain outliers	206894	16415

The table below summarises the geometric issues observed across the polymeric chains and their fit to the map. The red, orange, yellow and green segments of the bar indicate the fraction of residues that contain outliers for  $\geq 3$ , 2, 1 and 0 types of geometric quality criteria respectively. A grey segment represents the fraction of residues that are not modelled. The numeric value for each fraction is indicated below the corresponding segment, with a dot representing fractions  $\leq 5\%$ . The upper red bar (where present) indicates the fraction of residues that have poor fit to the EM map (all-atom inclusion  $< 40\%$ ). The numeric value is given above the bar.

Mol	Chain	Length	Quality of chain
1	A	2031	
2	B	218	
3	C	215	
4	D	2	
4	E	2	
4	F	2	

The following table lists non-polymeric compounds, carbohydrate monomers and non-standard residues in protein, DNA, RNA chains that are outliers for geometric or electron-density-fit criteria:

<b>Mol</b>	<b>Type</b>	<b>Chain</b>	<b>Res</b>	<b>Chirality</b>	<b>Geometry</b>	<b>Clashes</b>	<b>Electron density</b>
10	PCW	A	2018	-	-	X	-
7	Y01	A	2005	-	-	X	-
8	9Z9	A	2006	-	-	X	-

## 2 Entry composition i

There are 10 unique types of molecules in this entry. The entry contains 14915 atoms, of which 0 are hydrogens and 0 are deuteriums.

In the tables below, the AltConf column contains the number of residues with at least one atom in alternate conformation and the Trace column contains the number of residues modelled with at most 2 atoms.

- Molecule 1 is a protein called Sodium channel protein type 9 subunit alpha.

Mol	Chain	Residues	Atoms					AltConf	Trace
			Total	C	N	O	S		
1	A	1420	11445	7554	1802	2004	85	0	0

There are 44 discrepancies between the modelled and reference sequences:

Chain	Residue	Modelled	Actual	Comment	Reference
A	-42	MET	-	expression tag	UNP Q15858
A	-41	ALA	-	expression tag	UNP Q15858
A	-40	SER	-	expression tag	UNP Q15858
A	-39	TRP	-	expression tag	UNP Q15858
A	-38	SER	-	expression tag	UNP Q15858
A	-37	HIS	-	expression tag	UNP Q15858
A	-36	PRO	-	expression tag	UNP Q15858
A	-35	GLN	-	expression tag	UNP Q15858
A	-34	PHE	-	expression tag	UNP Q15858
A	-33	GLU	-	expression tag	UNP Q15858
A	-32	LYS	-	expression tag	UNP Q15858
A	-31	GLY	-	expression tag	UNP Q15858
A	-30	GLY	-	expression tag	UNP Q15858
A	-29	GLY	-	expression tag	UNP Q15858
A	-28	ALA	-	expression tag	UNP Q15858
A	-27	ARG	-	expression tag	UNP Q15858
A	-26	GLY	-	expression tag	UNP Q15858
A	-25	GLY	-	expression tag	UNP Q15858
A	-24	SER	-	expression tag	UNP Q15858
A	-23	GLY	-	expression tag	UNP Q15858
A	-22	GLY	-	expression tag	UNP Q15858
A	-21	GLY	-	expression tag	UNP Q15858
A	-20	SER	-	expression tag	UNP Q15858
A	-19	TRP	-	expression tag	UNP Q15858
A	-18	SER	-	expression tag	UNP Q15858
A	-17	HIS	-	expression tag	UNP Q15858
A	-16	PRO	-	expression tag	UNP Q15858
A	-15	GLN	-	expression tag	UNP Q15858

*Continued on next page...*

Continued from previous page...

Chain	Residue	Modelled	Actual	Comment	Reference
A	-14	PHE	-	expression tag	UNP Q15858
A	-13	GLU	-	expression tag	UNP Q15858
A	-12	LYS	-	expression tag	UNP Q15858
A	-11	GLY	-	expression tag	UNP Q15858
A	-10	PHE	-	expression tag	UNP Q15858
A	-9	ASP	-	expression tag	UNP Q15858
A	-8	TYR	-	expression tag	UNP Q15858
A	-7	LYS	-	expression tag	UNP Q15858
A	-6	ASP	-	expression tag	UNP Q15858
A	-5	ASP	-	expression tag	UNP Q15858
A	-4	ASP	-	expression tag	UNP Q15858
A	-3	ASP	-	expression tag	UNP Q15858
A	-2	LYS	-	expression tag	UNP Q15858
A	-1	GLY	-	expression tag	UNP Q15858
A	0	THR	-	expression tag	UNP Q15858
A	406	LYS	GLU	engineered mutation	UNP Q15858

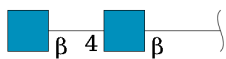
- Molecule 2 is a protein called Sodium channel subunit beta-1.

Mol	Chain	Residues	Atoms					AltConf	Trace
			Total	C	N	O	S		
2	B	173	1416	902	232	272	10	0	0

- Molecule 3 is a protein called Sodium channel subunit beta-2.

Mol	Chain	Residues	Atoms					AltConf	Trace
			Total	C	N	O	S		
3	C	119	980	615	172	183	10	4	0

- Molecule 4 is an oligosaccharide called 2-acetamido-2-deoxy-beta-D-glucopyranose-(1-4)-2-acetamido-2-deoxy-beta-D-glucopyranose.



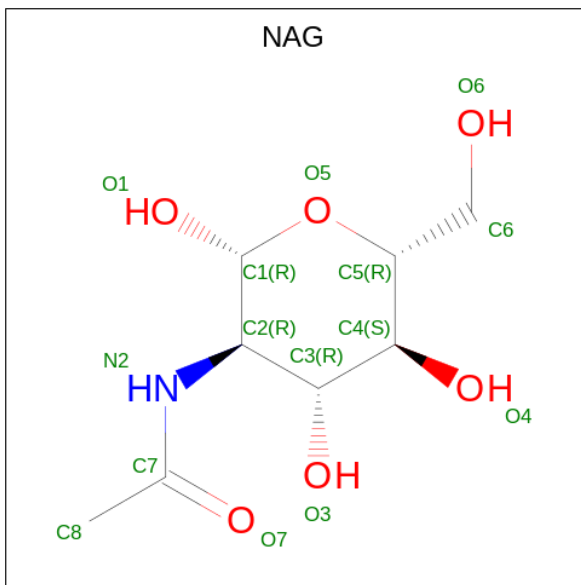
Mol	Chain	Residues	Atoms				AltConf	Trace
			Total	C	N	O		
4	D	2	28	16	2	10	0	0
4	E	2	28	16	2	10	0	0

Continued on next page...

Continued from previous page...

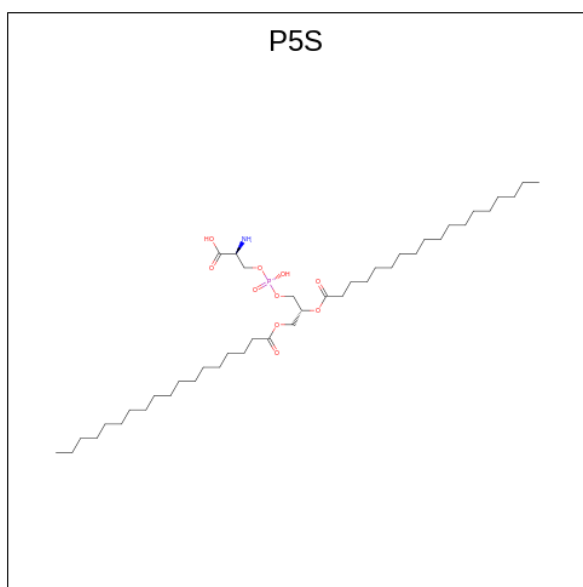
Mol	Chain	Residues	Atoms				AltConf	Trace
			Total	C	N	O		
4	F	2	28	16	2	10	0	0

- Molecule 5 is 2-acetamido-2-deoxy-beta-D-glucopyranose (three-letter code: NAG) (formula:  $C_8H_{15}NO_6$ ) (labeled as "Ligand of Interest" by depositor).



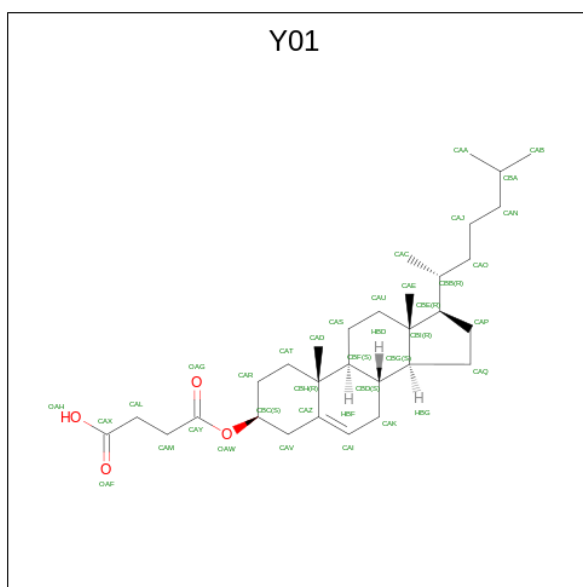
Mol	Chain	Residues	Atoms				AltConf
			Total	C	N	O	
5	A	1	14	8	1	5	0
5	A	1	14	8	1	5	0
5	B	1	14	8	1	5	0
5	B	1	14	8	1	5	0
5	B	1	14	8	1	5	0

- Molecule 6 is O-[(R)-{[(2R)-2,3-bis(octadecanoyloxy)propyl]oxy}(hydroxy)phosphoryl]-L-serine (three-letter code: P5S) (formula:  $C_{42}H_{82}NO_{10}P$ ).



Mol	Chain	Residues	Atoms					AltConf
			Total	C	N	O	P	
6	A	1	35	24	1	9	1	0
6	A	1	41	31	1	8	1	0
6	A	1	34	22	1	10	1	0

- Molecule 7 is CHOLESTEROL HEMISUCCINATE (three-letter code: Y01) (formula: C<sub>31</sub>H<sub>50</sub>O<sub>4</sub>).



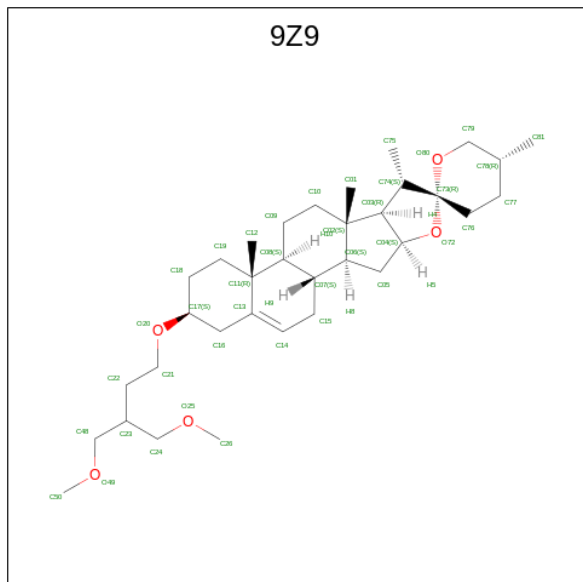
Mol	Chain	Residues	Atoms			AltConf
			Total	C	O	
7	A	1	35	31	4	0

*Continued on next page...*

Continued from previous page...

Mol	Chain	Residues	Atoms			AltConf
7	A	1	Total	C	O	0
			35	31	4	
7	A	1	Total	C	O	0
			35	31	4	
7	A	1	Total	C	O	0
			35	31	4	
7	A	1	Total	C	O	0
			35	31	4	

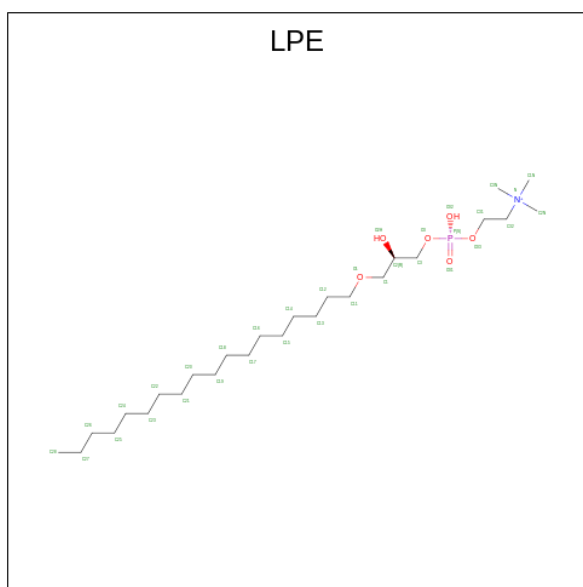
- Molecule 8 is (3beta,14beta,17beta,25R)-3-[4-methoxy-3-(methoxymethyl)butoxy]spirost-5-en (three-letter code: 9Z9) (formula: C<sub>34</sub>H<sub>56</sub>O<sub>5</sub>).



Mol	Chain	Residues	Atoms			AltConf
8	A	1	Total	C	O	0
			39	34	5	

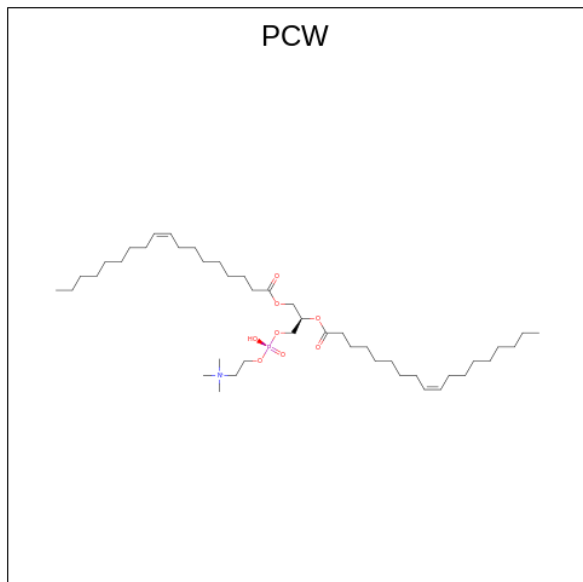
- Molecule 9 is 1-O-OCTADECYL-SN-GLYCERO-3-PHOSPHOCHOLINE (three-letter code: LPE) (formula: C<sub>26</sub>H<sub>57</sub>NO<sub>6</sub>P).





Mol	Chain	Residues	Atoms					AltConf
			Total	C	N	O	P	
9	A	1	25	17	1	6	1	0
9	A	1	25	17	1	6	1	0
9	A	1	20	12	1	6	1	0
9	A	1	22	14	1	6	1	0
9	A	1	28	20	1	6	1	0
9	A	1	25	17	1	6	1	0
9	A	1	25	17	1	6	1	0
9	A	1	25	17	1	6	1	0
9	A	1	25	17	1	6	1	0
9	A	1	25	17	1	6	1	0
9	A	1	25	17	1	6	1	0
9	A	1	17	9	1	6	1	0
9	B	1	17	9	1	6	1	0

- Molecule 10 is 1,2-DIOLEOYL-SN-GLYCERO-3-PHOSPHOCHOLINE (three-letter code: PCW) (formula:  $C_{44}H_{85}NO_8P$ ).



Mol	Chain	Residues	Atoms					AltConf
			Total	C	N	O	P	
10	A	1	Total 53	43	1	8	1	0
10	A	1	Total 47	37	1	8	1	0
10	A	1	Total 44	34	1	8	1	0
10	A	1	Total 44	34	1	8	1	0
10	A	1	Total 44	34	1	8	1	0







Chain E:  100%

MAG1  
MAG2

- Molecule 4: 2-acetamido-2-deoxy-beta-D-glucopyranose-(1-4)-2-acetamido-2-deoxy-beta-D-glucopyranose

Chain F:  100%

MAG1  
MAG2

## 4 Experimental information

Property	Value	Source
EM reconstruction method	SINGLE PARTICLE	Depositor
Imposed symmetry	POINT, C1	Depositor
Number of particles used	1197096	Depositor
Resolution determination method	FSC 0.143 CUT-OFF	Depositor
CTF correction method	PHASE FLIPPING AND AMPLITUDE CORRECTION	Depositor
Microscope	FEI TITAN KRIOS	Depositor
Voltage (kV)	300	Depositor
Electron dose ( $e^-/\text{\AA}^2$ )	50	Depositor
Minimum defocus (nm)	1500	Depositor
Maximum defocus (nm)	1800	Depositor
Magnification	Not provided	
Image detector	GATAN K3 (6k x 4k)	Depositor
Maximum map value	5.345	Depositor
Minimum map value	-3.549	Depositor
Average map value	0.005	Depositor
Map value standard deviation	0.116	Depositor
Recommended contour level	0.43	Depositor
Map size (Å)	276.48, 276.48, 276.48	wwPDB
Map dimensions	256, 256, 256	wwPDB
Map angles (°)	90.0, 90.0, 90.0	wwPDB
Pixel spacing (Å)	1.08, 1.08, 1.08	Depositor

## 5 Model quality [i](#)

### 5.1 Standard geometry [i](#)

Bond lengths and bond angles in the following residue types are not validated in this section: Y01, PCW, NAG, LPE, P5S, 9Z9

The Z score for a bond length (or angle) is the number of standard deviations the observed value is removed from the expected value. A bond length (or angle) with  $|Z| > 5$  is considered an outlier worth inspection. RMSZ is the root-mean-square of all Z scores of the bond lengths (or angles).

Mol	Chain	Bond lengths		Bond angles	
		RMSZ	# Z  >5	RMSZ	# Z  >5
1	A	0.48	0/11719	0.52	0/15869
2	B	0.53	0/1442	0.55	0/1949
3	C	0.36	0/1011	0.59	0/1367
All	All	0.48	0/14172	0.53	0/19185

Chiral center outliers are detected by calculating the chiral volume of a chiral center and verifying if the center is modelled as a planar moiety or with the opposite hand. A planarity outlier is detected by checking planarity of atoms in a peptide group, atoms in a mainchain group or atoms of a sidechain that are expected to be planar.

Mol	Chain	#Chirality outliers	#Planarity outliers
1	A	0	1

There are no bond length outliers.

There are no bond angle outliers.

There are no chirality outliers.

All (1) planarity outliers are listed below:

Mol	Chain	Res	Type	Group
1	A	1712	PRO	Peptide

### 5.2 Too-close contacts [i](#)

In the following table, the Non-H and H(model) columns list the number of non-hydrogen atoms and hydrogen atoms in the chain respectively. The H(added) column lists the number of hydrogen atoms added and optimized by MolProbity. The Clashes column lists the number of clashes within the asymmetric unit, whereas Symm-Clashes lists symmetry-related clashes.



Mol	Chain	Non-H	H(model)	H(added)	Clashes	Symm-Clashes
1	A	11445	0	11662	539	0
2	B	1416	0	1379	78	0
3	C	980	0	935	17	0
4	D	28	0	25	1	0
4	E	28	0	25	5	0
4	F	28	0	25	6	0
5	A	28	0	26	0	0
5	B	42	0	39	6	0
6	A	110	0	130	24	0
7	A	210	0	294	74	0
8	A	39	0	0	33	0
9	A	312	0	426	58	0
9	B	17	0	19	9	0
10	A	232	0	323	50	0
All	All	14915	0	15308	666	0

The all-atom clashscore is defined as the number of clashes found per 1000 atoms (including hydrogen atoms). The all-atom clashscore for this structure is 22.

The worst 5 of 666 close contacts within the same asymmetric unit are listed below, sorted by their clash magnitude.

Atom-1	Atom-2	Interatomic distance (Å)	Clash overlap (Å)
2:B:178:MET:CE	9:B:304:LPE:H12	1.51	1.41
1:A:1330:ILE:CD1	7:A:2005:Y01:HAB2	1.60	1.32
1:A:1653:LEU:HB3	9:A:2014:LPE:C16	1.60	1.29
1:A:398:LEU:HD23	8:A:2006:9Z9:C75	1.61	1.28
1:A:212:ALA:HB1	7:A:2007:Y01:OAG	1.31	1.27

There are no symmetry-related clashes.

## 5.3 Torsion angles [i](#)

### 5.3.1 Protein backbone [i](#)

In the following table, the Percentiles column shows the percent Ramachandran outliers of the chain as a percentile score with respect to all PDB entries followed by that with respect to all EM entries.

The Analysed column shows the number of residues for which the backbone conformation was analysed, and the total number of residues.

Mol	Chain	Analysed	Favoured	Allowed	Outliers	Percentiles	
1	A	1412/2031 (70%)	1300 (92%)	112 (8%)	0	100	100
2	B	171/218 (78%)	153 (90%)	18 (10%)	0	100	100
3	C	120/215 (56%)	116 (97%)	4 (3%)	0	100	100
All	All	1703/2464 (69%)	1569 (92%)	134 (8%)	0	100	100

There are no Ramachandran outliers to report.

### 5.3.2 Protein sidechains [i](#)

In the following table, the Percentiles column shows the percent sidechain outliers of the chain as a percentile score with respect to all PDB entries followed by that with respect to all EM entries.

The Analysed column shows the number of residues for which the sidechain conformation was analysed, and the total number of residues.

Mol	Chain	Analysed	Rotameric	Outliers	Percentiles	
1	A	1268/1809 (70%)	1267 (100%)	1 (0%)	92	97
2	B	157/190 (83%)	155 (99%)	2 (1%)	65	81
3	C	114/193 (59%)	112 (98%)	2 (2%)	54	74
All	All	1539/2192 (70%)	1534 (100%)	5 (0%)	90	96

All (5) residues with a non-rotameric sidechain are listed below:

Mol	Chain	Res	Type
1	A	182	THR
2	B	109	THR
2	B	113	TYR
3	C	71	GLU
3	C	147	LEU

Sometimes sidechains can be flipped to improve hydrogen bonding and reduce clashes. 5 of 20 such sidechains are listed below:

Mol	Chain	Res	Type
2	B	115	HIS
3	C	70	GLN
3	C	118	GLN
3	C	82	GLN
1	A	780	ASN

### 5.3.3 RNA [i](#)

There are no RNA molecules in this entry.

### 5.4 Non-standard residues in protein, DNA, RNA chains [i](#)

There are no non-standard protein/DNA/RNA residues in this entry.

### 5.5 Carbohydrates [i](#)

6 monosaccharides are modelled in this entry.

In the following table, the Counts columns list the number of bonds (or angles) for which Mogul statistics could be retrieved, the number of bonds (or angles) that are observed in the model and the number of bonds (or angles) that are defined in the Chemical Component Dictionary. The Link column lists molecule types, if any, to which the group is linked. The Z score for a bond length (or angle) is the number of standard deviations the observed value is removed from the expected value. A bond length (or angle) with  $|Z| > 2$  is considered an outlier worth inspection. RMSZ is the root-mean-square of all Z scores of the bond lengths (or angles).

Mol	Type	Chain	Res	Link	Bond lengths			Bond angles		
					Counts	RMSZ	# Z  > 2	Counts	RMSZ	# Z  > 2
4	NAG	D	1	1,4	14,14,15	0.22	0	17,19,21	0.46	0
4	NAG	D	2	4	14,14,15	0.30	0	17,19,21	0.71	1 (5%)
4	NAG	E	1	1,4	14,14,15	0.31	0	17,19,21	0.89	1 (5%)
4	NAG	E	2	4	14,14,15	0.27	0	17,19,21	0.90	1 (5%)
4	NAG	F	1	4,2	14,14,15	0.57	0	17,19,21	1.19	2 (11%)
4	NAG	F	2	4	14,14,15	0.66	0	17,19,21	1.19	1 (5%)

In the following table, the Chirals column lists the number of chiral outliers, the number of chiral centers analysed, the number of these observed in the model and the number defined in the Chemical Component Dictionary. Similar counts are reported in the Torsion and Rings columns. '-' means no outliers of that kind were identified.

Mol	Type	Chain	Res	Link	Chirals	Torsions	Rings
4	NAG	D	1	1,4	-	2/6/23/26	0/1/1/1
4	NAG	D	2	4	-	0/6/23/26	0/1/1/1
4	NAG	E	1	1,4	-	3/6/23/26	0/1/1/1
4	NAG	E	2	4	-	0/6/23/26	0/1/1/1
4	NAG	F	1	4,2	-	2/6/23/26	0/1/1/1
4	NAG	F	2	4	-	2/6/23/26	0/1/1/1

There are no bond length outliers.

The worst 5 of 6 bond angle outliers are listed below:

Mol	Chain	Res	Type	Atoms	Z	Observed(°)	Ideal(°)
4	E	1	NAG	C4-C3-C2	-2.91	106.75	111.02
4	E	2	NAG	C4-C3-C2	-2.83	106.87	111.02
4	F	1	NAG	C1-O5-C5	2.73	115.89	112.19
4	F	1	NAG	C3-C4-C5	-2.63	105.55	110.24
4	F	2	NAG	C4-C3-C2	-2.40	107.50	111.02

There are no chirality outliers.

5 of 9 torsion outliers are listed below:

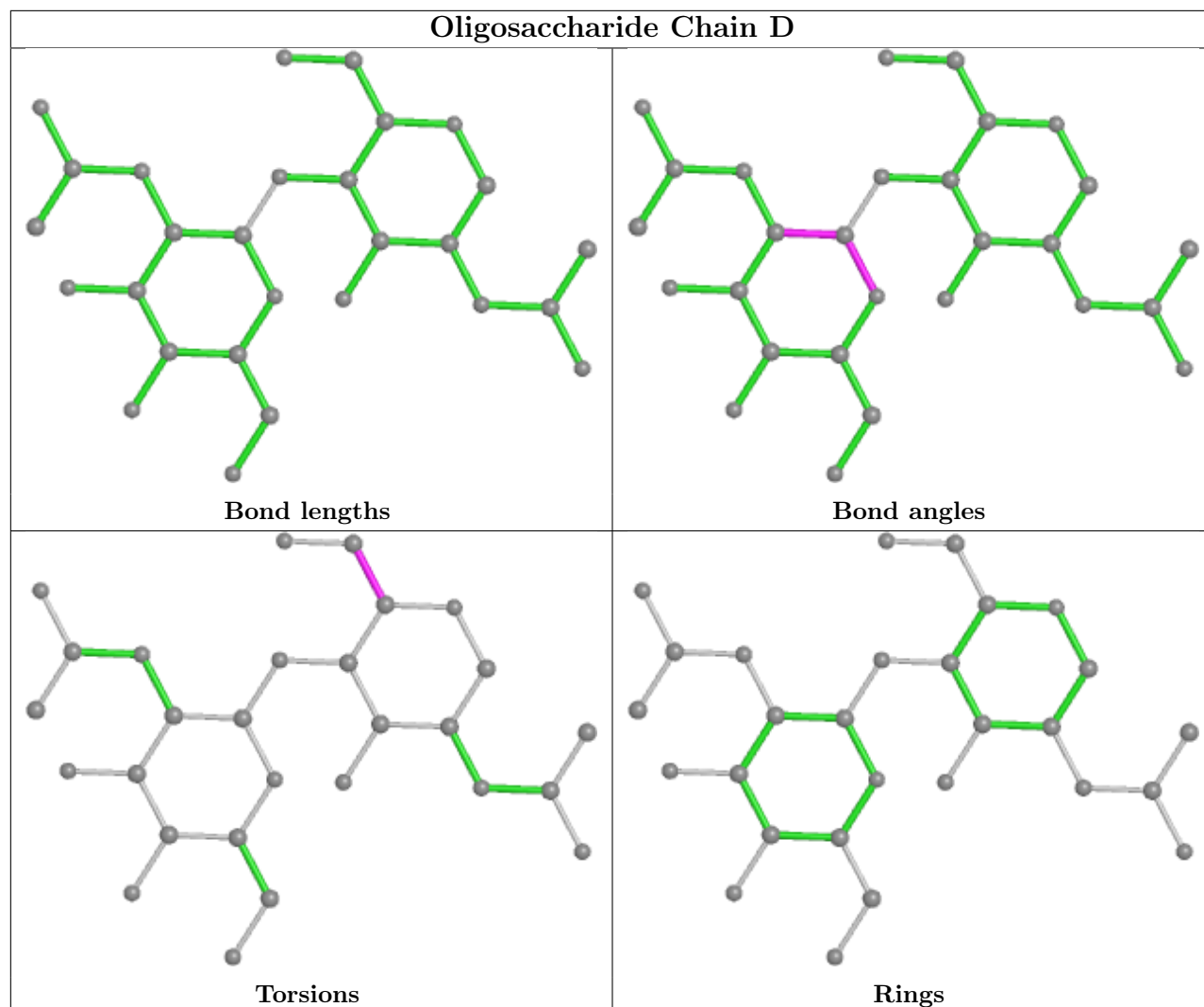
Mol	Chain	Res	Type	Atoms
4	E	1	NAG	O7-C7-N2-C2
4	E	1	NAG	C8-C7-N2-C2
4	F	2	NAG	C4-C5-C6-O6
4	F	2	NAG	O5-C5-C6-O6
4	E	1	NAG	O5-C5-C6-O6

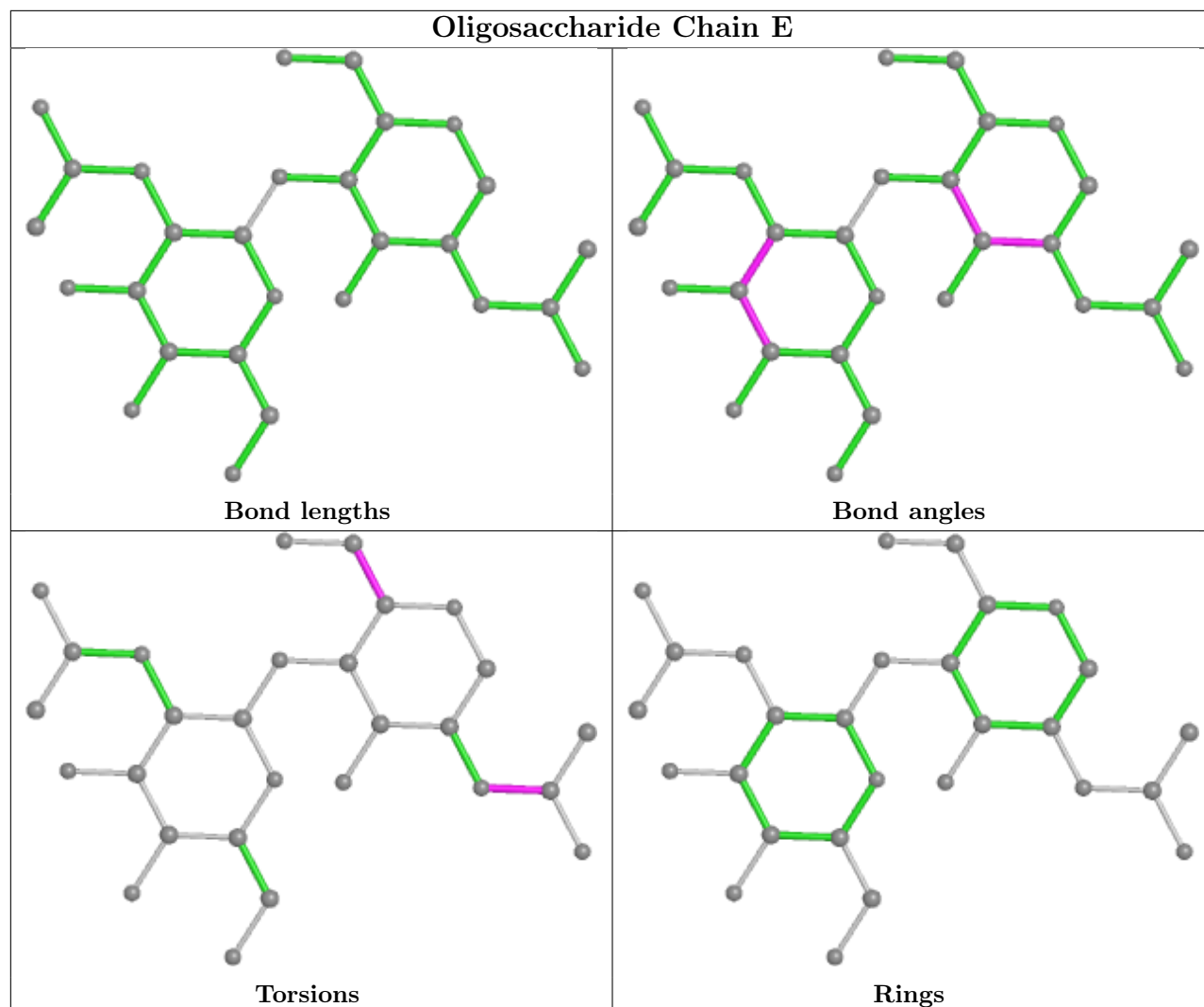
There are no ring outliers.

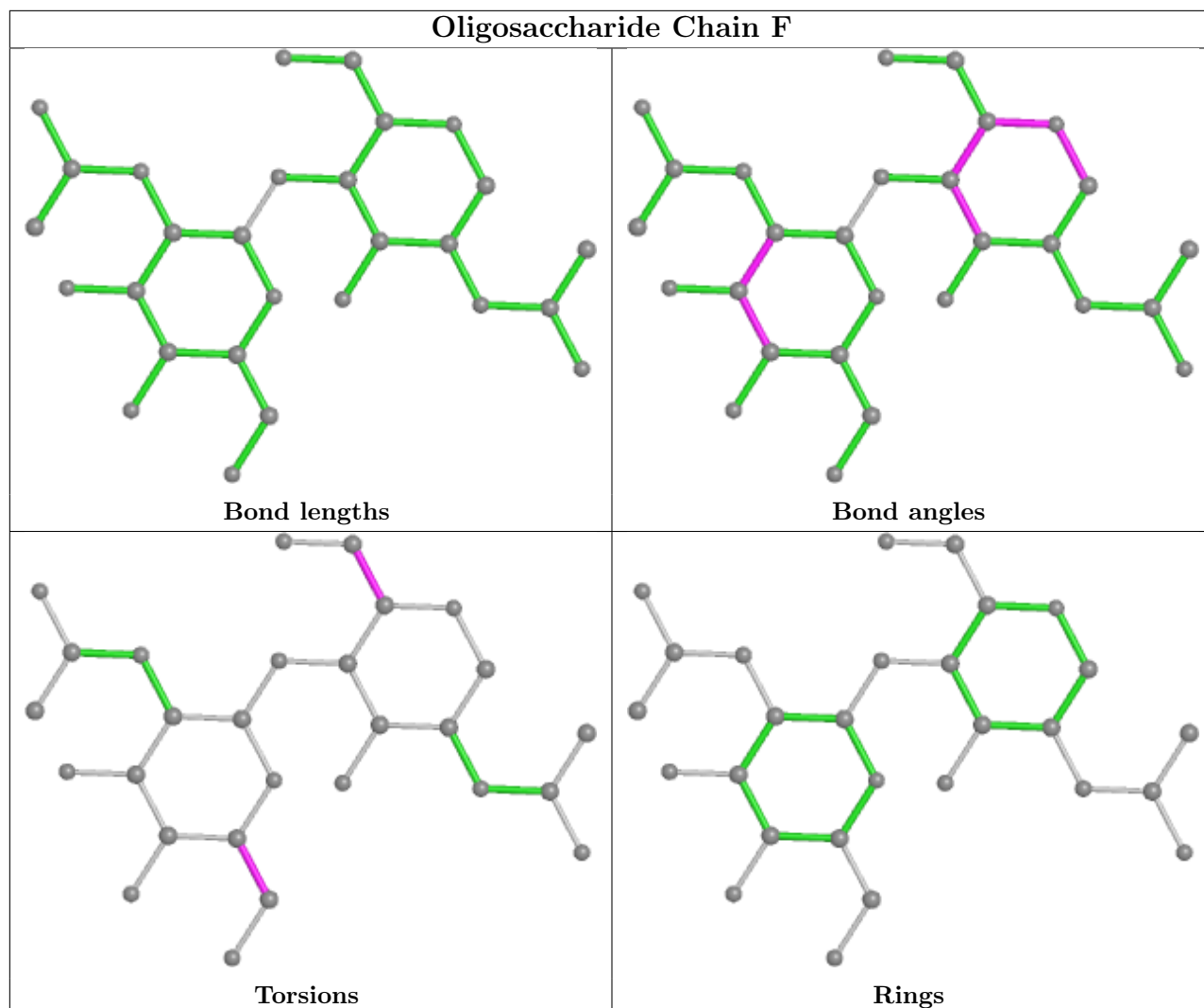
5 monomers are involved in 12 short contacts:

Mol	Chain	Res	Type	Clashes	Symm-Clashes
4	F	2	NAG	4	0
4	F	1	NAG	2	0
4	E	2	NAG	4	0
4	E	1	NAG	5	0
4	D	1	NAG	1	0

The following is a two-dimensional graphical depiction of Mogul quality analysis of bond lengths, bond angles, torsion angles, and ring geometry for oligosaccharide.







## 5.6 Ligand geometry [i](#)

34 ligands are modelled in this entry.

In the following table, the Counts columns list the number of bonds (or angles) for which Mogul statistics could be retrieved, the number of bonds (or angles) that are observed in the model and the number of bonds (or angles) that are defined in the Chemical Component Dictionary. The Link column lists molecule types, if any, to which the group is linked. The Z score for a bond length (or angle) is the number of standard deviations the observed value is removed from the expected value. A bond length (or angle) with  $|Z| > 2$  is considered an outlier worth inspection. RMSZ is the root-mean-square of all Z scores of the bond lengths (or angles).

Mol	Type	Chain	Res	Link	Bond lengths			Bond angles		
					Counts	RMSZ	$\# Z  > 2$	Counts	RMSZ	$\# Z  > 2$
10	PCW	A	2018	-	43,43,53	1.01	2 (4%)	49,51,61	1.12	5 (10%)
9	LPE	A	2014	-	21,21,33	0.67	0	25,27,39	1.03	2 (8%)
9	LPE	A	2019	-	24,24,33	0.57	0	28,30,39	0.67	0

Mol	Type	Chain	Res	Link	Bond lengths			Bond angles		
					Counts	RMSZ	# Z  > 2	Counts	RMSZ	# Z  > 2
10	PCW	A	2028	-	43,43,53	0.99	2 (4%)	49,51,61	2.91	7 (14%)
9	LPE	B	304	-	16,16,33	0.66	0	20,22,39	0.60	0
10	PCW	A	2013	-	52,52,53	0.93	2 (3%)	58,60,61	1.03	3 (5%)
10	PCW	A	2016	-	46,46,53	0.99	3 (6%)	52,54,61	1.18	4 (7%)
6	P5S	A	2002	-	33,34,53	0.86	1 (3%)	36,40,60	1.66	5 (13%)
7	Y01	A	2009	-	38,38,38	1.15	4 (10%)	57,57,57	1.74	12 (21%)
5	NAG	B	303	2	14,14,15	0.27	0	17,19,21	0.43	0
5	NAG	B	301	2	14,14,15	0.65	0	17,19,21	0.99	0
7	Y01	A	2030	-	38,38,38	1.62	7 (18%)	57,57,57	1.63	10 (17%)
7	Y01	A	2005	-	38,38,38	1.16	4 (10%)	57,57,57	1.74	11 (19%)
9	LPE	A	2024	-	24,24,33	0.51	0	28,30,39	0.62	0
9	LPE	A	2015	-	27,27,33	0.54	0	31,33,39	0.60	0
9	LPE	A	2021	-	24,24,33	0.60	0	28,30,39	0.87	0
7	Y01	A	2003	-	38,38,38	0.66	1 (2%)	57,57,57	1.78	12 (21%)
5	NAG	B	302	2	14,14,15	0.37	0	17,19,21	0.96	1 (5%)
9	LPE	A	2020	-	24,24,33	0.85	0	28,30,39	0.92	1 (3%)
9	LPE	A	2012	-	19,19,33	0.62	0	23,25,39	0.51	0
6	P5S	A	2017	-	40,40,53	1.13	3 (7%)	43,45,60	1.37	3 (6%)
7	Y01	A	2007	-	38,38,38	0.67	1 (2%)	57,57,57	1.79	11 (19%)
8	9Z9	A	2006	-	44,44,44	0.70	1 (2%)	66,68,68	1.45	12 (18%)
9	LPE	A	2022	-	24,24,33	0.53	0	28,30,39	0.64	0
9	LPE	A	2010	-	24,24,33	0.51	0	28,30,39	0.60	0
9	LPE	A	2011	-	24,24,33	0.33	0	25,27,39	0.60	0
9	LPE	A	2023	-	24,24,33	0.53	0	28,30,39	0.54	0
5	NAG	A	2001	1	14,14,15	0.35	0	17,19,21	0.44	0
10	PCW	A	2027	-	43,43,53	1.03	2 (4%)	49,51,61	0.94	2 (4%)
5	NAG	A	2008	1	14,14,15	0.29	0	17,19,21	1.04	1 (5%)
6	P5S	A	2029	-	32,33,53	1.16	4 (12%)	36,40,60	1.04	3 (8%)
9	LPE	A	2026	-	16,16,33	0.69	0	20,22,39	0.67	0
9	LPE	A	2025	-	24,24,33	0.54	0	28,30,39	0.50	0
7	Y01	A	2004	-	38,38,38	0.65	1 (2%)	57,57,57	1.78	11 (19%)

In the following table, the Chirals column lists the number of chiral outliers, the number of chiral centers analysed, the number of these observed in the model and the number defined in the Chemical Component Dictionary. Similar counts are reported in the Torsion and Rings columns. '-' means no outliers of that kind were identified.



Mol	Type	Chain	Res	Link	Chirals	Torsions	Rings
10	PCW	A	2018	-	-	12/47/47/57	-
9	LPE	A	2014	-	-	15/22/22/34	-
9	LPE	A	2019	-	-	5/25/25/34	-
10	PCW	A	2028	-	-	10/47/47/57	-
9	LPE	B	304	-	-	9/17/17/34	-
10	PCW	A	2013	-	-	10/56/56/57	-
10	PCW	A	2016	-	-	13/50/50/57	-
6	P5S	A	2002	-	-	7/39/39/59	-
7	Y01	A	2009	-	-	4/19/77/77	0/4/4/4
5	NAG	B	303	2	-	0/6/23/26	0/1/1/1
5	NAG	B	301	2	-	0/6/23/26	0/1/1/1
7	Y01	A	2030	-	-	7/19/77/77	0/4/4/4
7	Y01	A	2005	-	-	4/19/77/77	0/4/4/4
9	LPE	A	2024	-	-	6/25/25/34	-
9	LPE	A	2015	-	-	10/28/28/34	-
9	LPE	A	2021	-	-	3/25/25/34	-
7	Y01	A	2003	-	-	0/19/77/77	0/4/4/4
5	NAG	B	302	2	-	2/6/23/26	0/1/1/1
9	LPE	A	2020	-	-	12/25/25/34	-
9	LPE	A	2012	-	-	10/20/20/34	-
6	P5S	A	2017	-	-	8/44/44/59	-
7	Y01	A	2007	-	-	0/19/77/77	0/4/4/4
8	9Z9	A	2006	-	-	0/12/100/100	0/6/6/6
9	LPE	A	2022	-	-	3/25/25/34	-
9	LPE	A	2010	-	-	10/25/25/34	-
9	LPE	A	2011	-	-	8/25/25/34	-
9	LPE	A	2023	-	-	8/25/25/34	-
5	NAG	A	2001	1	-	2/6/23/26	0/1/1/1
10	PCW	A	2027	-	-	16/47/47/57	-
5	NAG	A	2008	1	-	2/6/23/26	0/1/1/1
6	P5S	A	2029	-	-	16/39/39/59	-
9	LPE	A	2026	-	-	7/17/17/34	-
9	LPE	A	2025	-	-	10/25/25/34	-
7	Y01	A	2004	-	-	0/19/77/77	0/4/4/4

The worst 5 of 38 bond length outliers are listed below:

Mol	Chain	Res	Type	Atoms	Z	Observed(Å)	Ideal(Å)
6	A	2017	P5S	O37-C38	4.40	1.46	1.34
10	A	2027	PCW	O3-C11	4.39	1.46	1.33
7	A	2030	Y01	CBB-CBE	-4.36	1.46	1.54
6	A	2002	P5S	O37-C38	4.27	1.46	1.34
10	A	2028	PCW	O3-C11	4.25	1.45	1.33

The worst 5 of 116 bond angle outliers are listed below:

Mol	Chain	Res	Type	Atoms	Z	Observed(°)	Ideal(°)
10	A	2028	PCW	C8-N-C6	-12.05	77.99	108.97
10	A	2028	PCW	C8-N-C7	-12.04	78.02	108.97
10	A	2028	PCW	C8-N-C5	-7.82	77.94	109.92
6	A	2002	P5S	O37-C38-C39	6.69	125.92	111.50
7	A	2009	Y01	CBI-CBE-CBB	-5.95	110.16	119.49

There are no chirality outliers.

5 of 229 torsion outliers are listed below:

Mol	Chain	Res	Type	Atoms
5	B	302	NAG	C8-C7-N2-C2
5	B	302	NAG	O7-C7-N2-C2
6	A	2002	P5S	N-CA-CB-OG
6	A	2002	P5S	C39-C38-O37-C2
6	A	2002	P5S	O47-C38-O37-C2

There are no ring outliers.

29 monomers are involved in 247 short contacts:

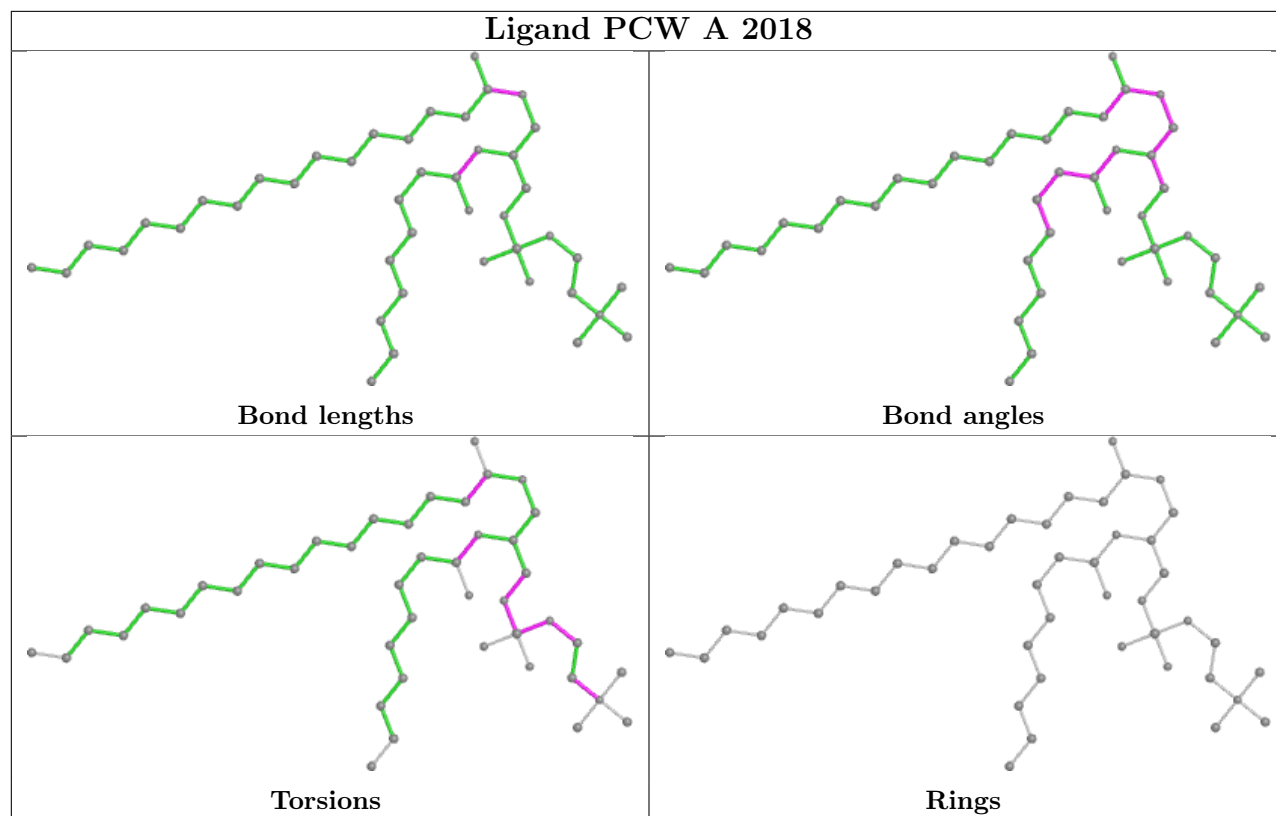
Mol	Chain	Res	Type	Clashes	Symm-Clashes
10	A	2018	PCW	22	0
9	A	2014	LPE	18	0
9	A	2019	LPE	1	0
10	A	2028	PCW	1	0
9	B	304	LPE	9	0
10	A	2013	PCW	7	0
10	A	2016	PCW	16	0
6	A	2002	P5S	5	0
7	A	2009	Y01	6	0
7	A	2030	Y01	9	0
7	A	2005	Y01	27	0
9	A	2015	LPE	5	0
9	A	2021	LPE	4	0

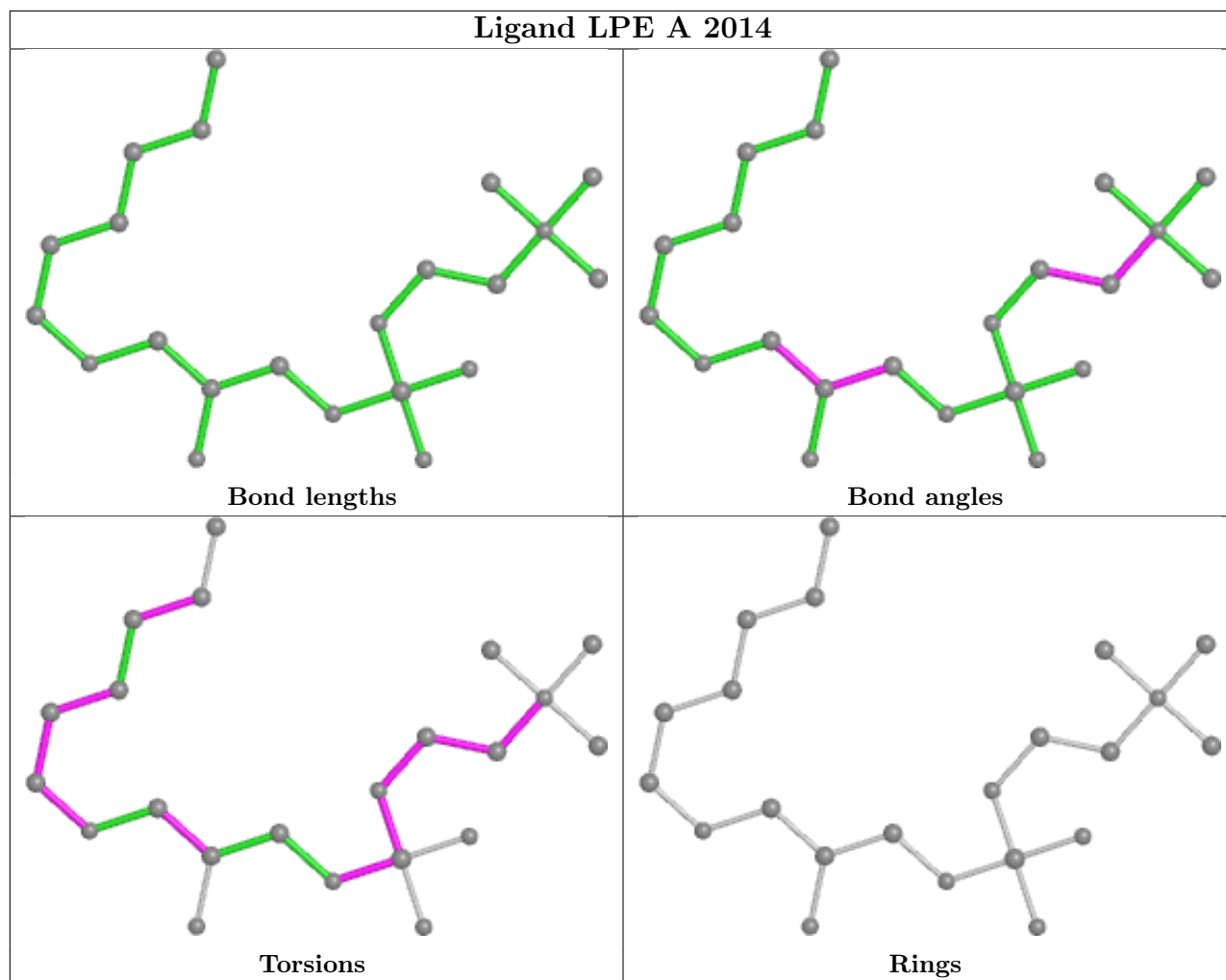
*Continued on next page...*

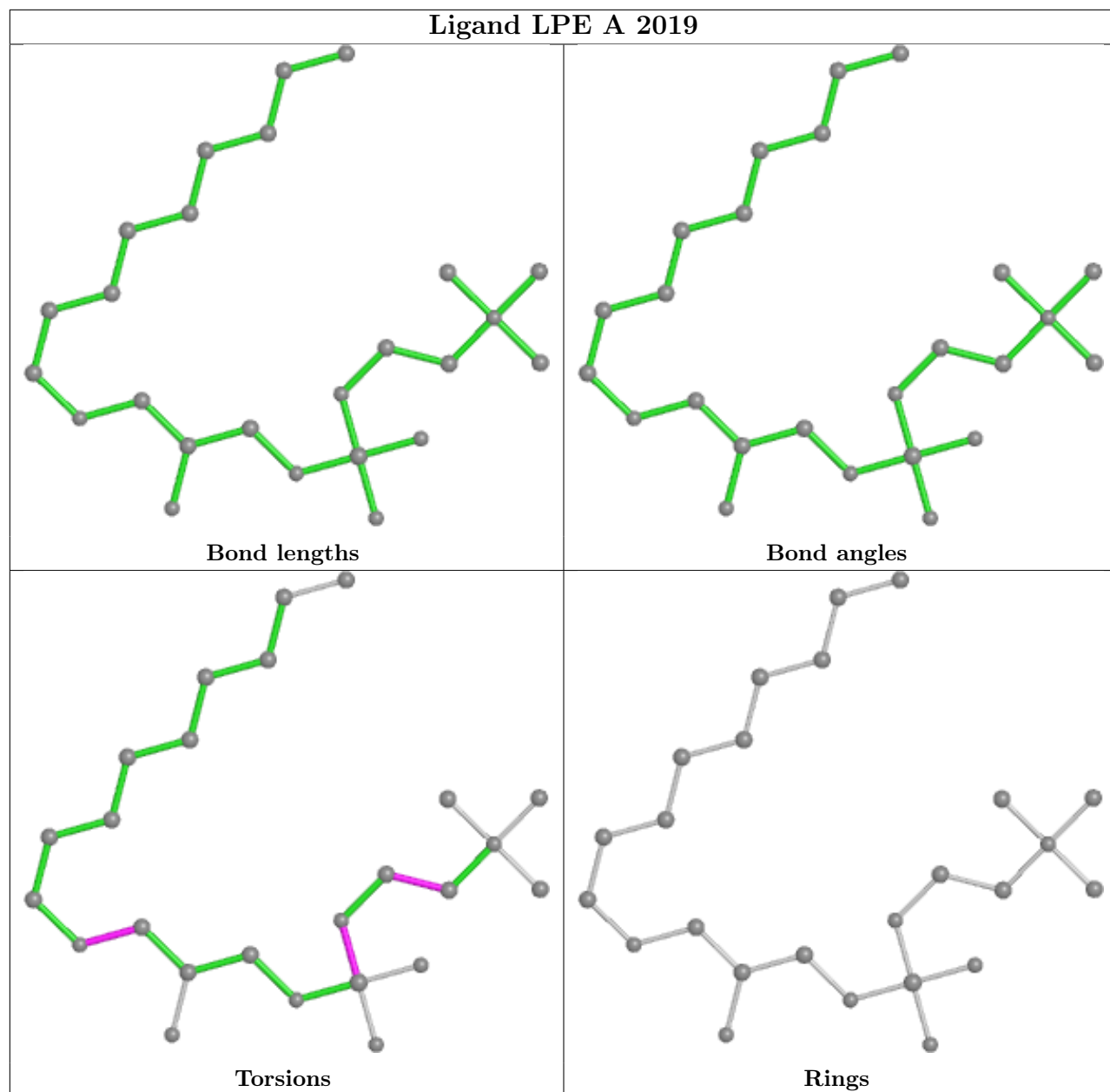
*Continued from previous page...*

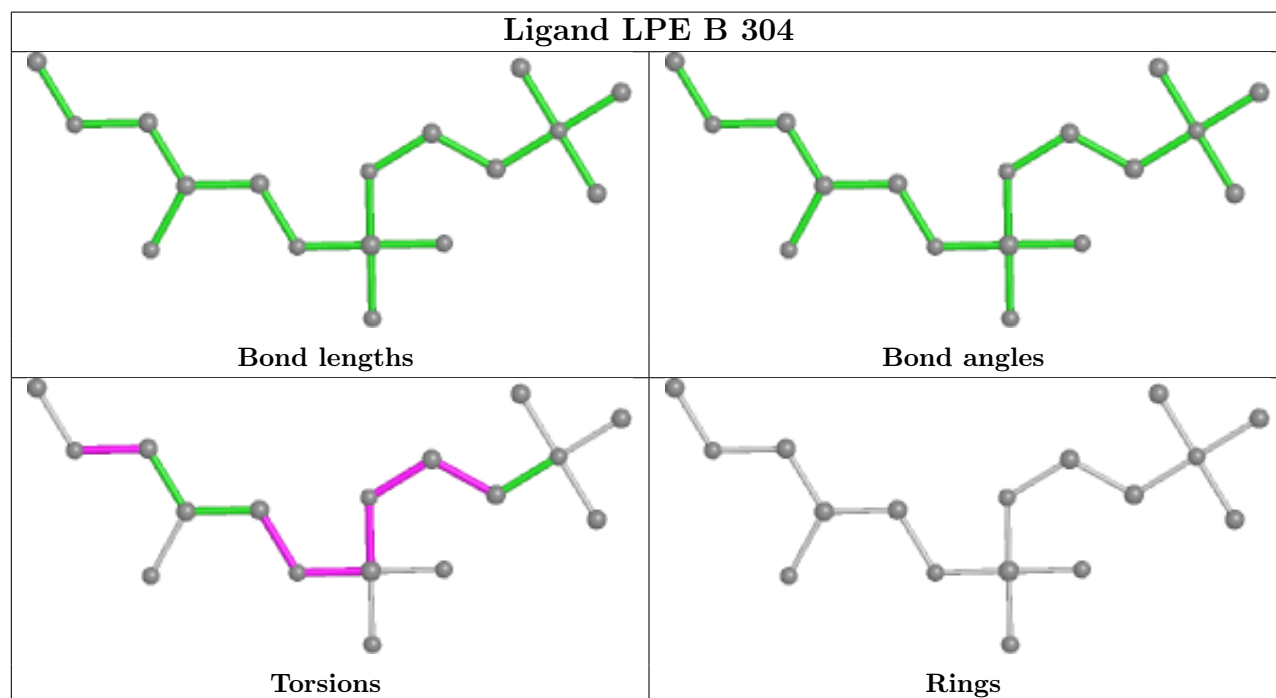
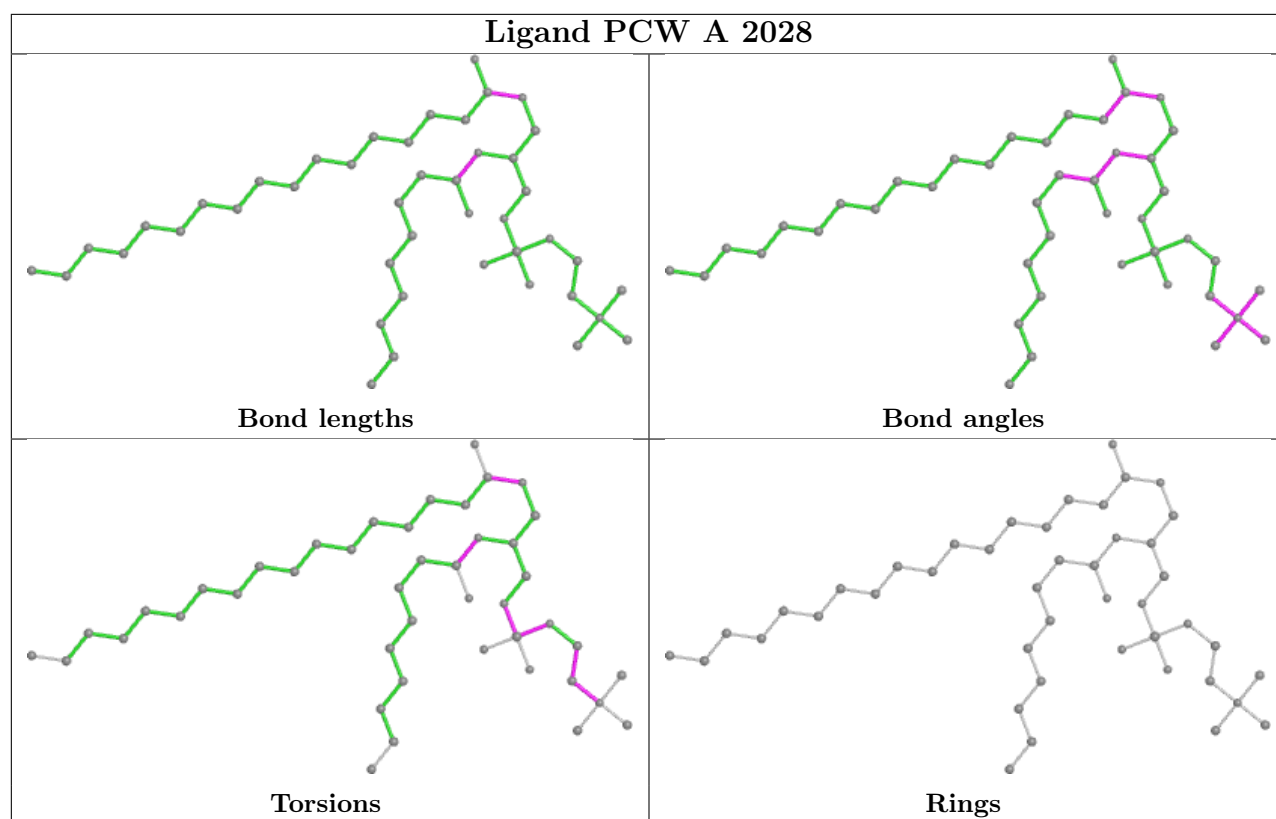
Mol	Chain	Res	Type	Clashes	Symm-Clashes
7	A	2003	Y01	5	0
5	B	302	NAG	6	0
9	A	2020	LPE	2	0
9	A	2012	LPE	4	0
6	A	2017	P5S	17	0
7	A	2007	Y01	19	0
8	A	2006	9Z9	33	0
9	A	2022	LPE	8	0
9	A	2010	LPE	4	0
9	A	2011	LPE	1	0
9	A	2023	LPE	14	0
10	A	2027	PCW	5	0
6	A	2029	P5S	2	0
9	A	2026	LPE	2	0
9	A	2025	LPE	1	0
7	A	2004	Y01	8	0

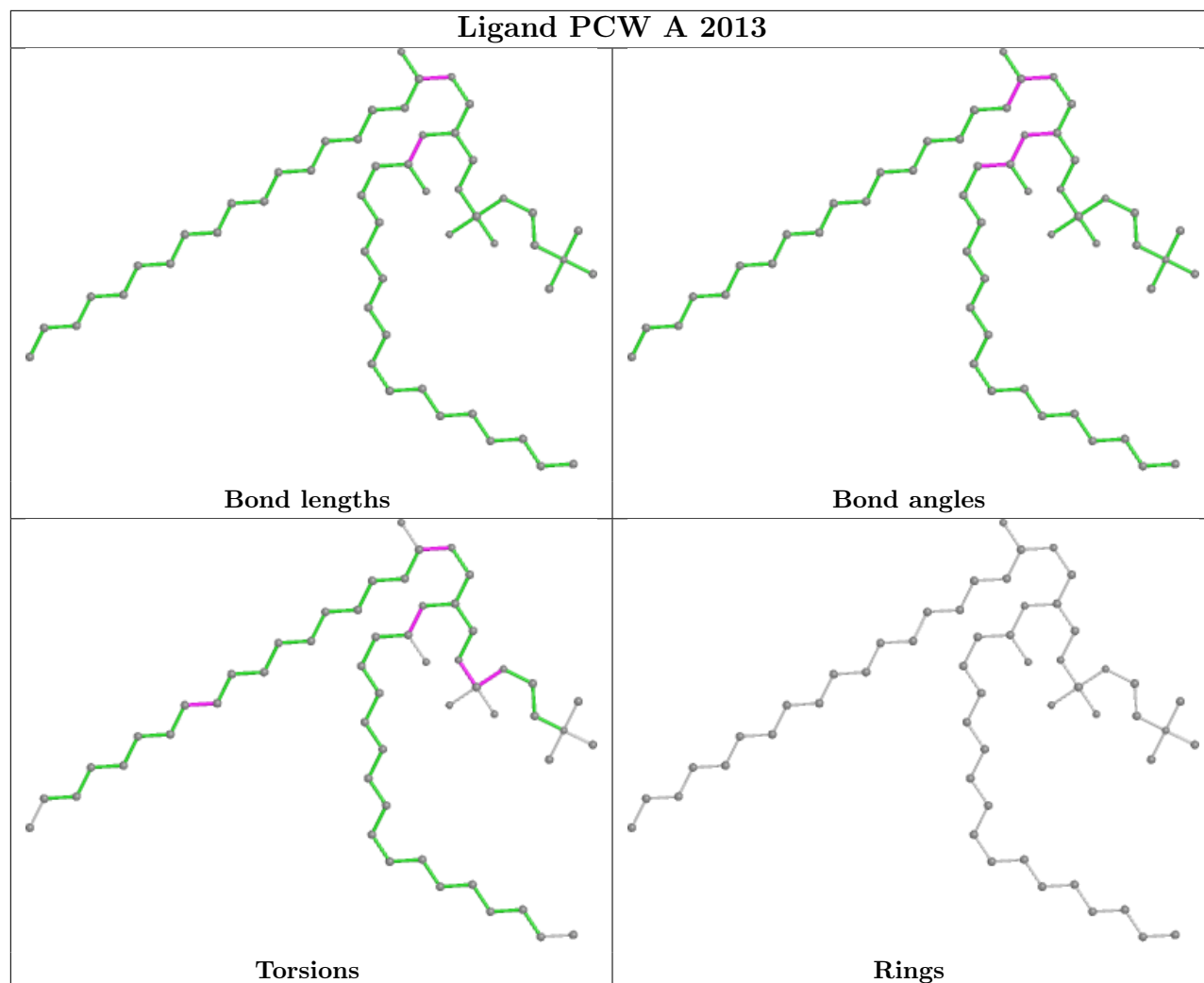
The following is a two-dimensional graphical depiction of Mogul quality analysis of bond lengths, bond angles, torsion angles, and ring geometry for all instances of the Ligand of Interest. In addition, ligands with molecular weight > 250 and outliers as shown on the validation Tables will also be included. For torsion angles, if less than 5% of the Mogul distribution of torsion angles is within 10 degrees of the torsion angle in question, then that torsion angle is considered an outlier. Any bond that is central to one or more torsion angles identified as an outlier by Mogul will be highlighted in the graph. For rings, the root-mean-square deviation (RMSD) between the ring in question and similar rings identified by Mogul is calculated over all ring torsion angles. If the average RMSD is greater than 60 degrees and the minimal RMSD between the ring in question and any Mogul-identified rings is also greater than 60 degrees, then that ring is considered an outlier. The outliers are highlighted in purple. The color gray indicates Mogul did not find sufficient equivalents in the CSD to analyse the geometry.



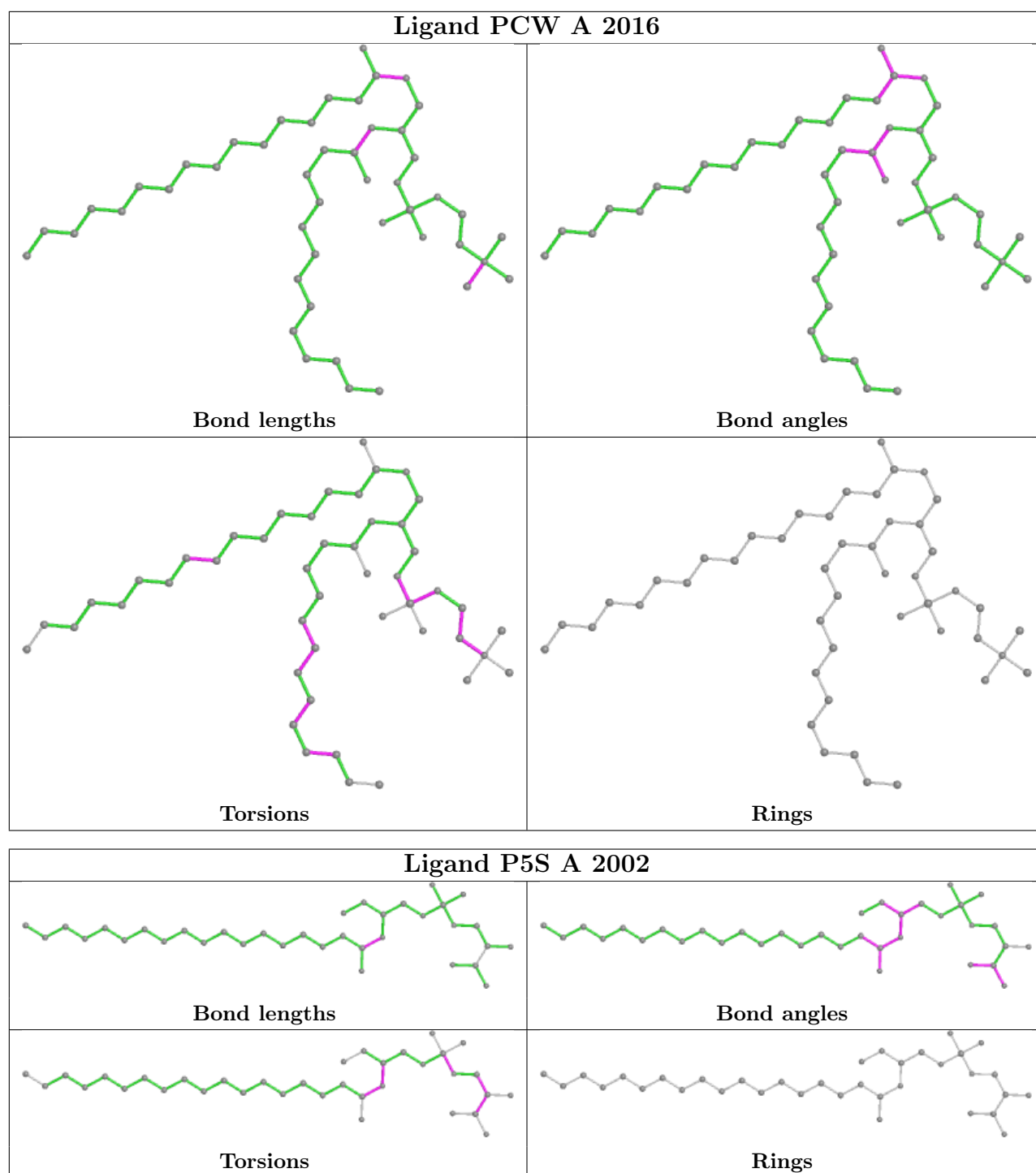


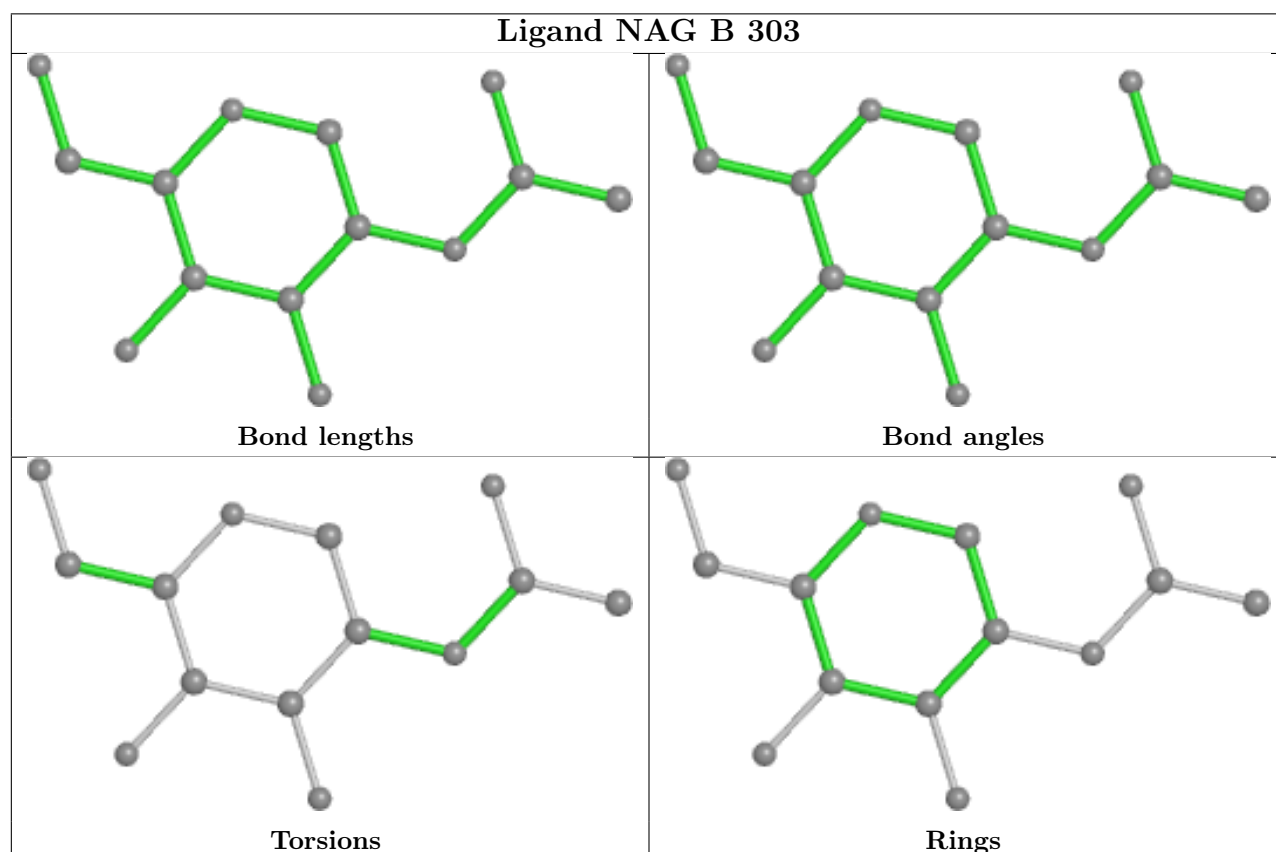
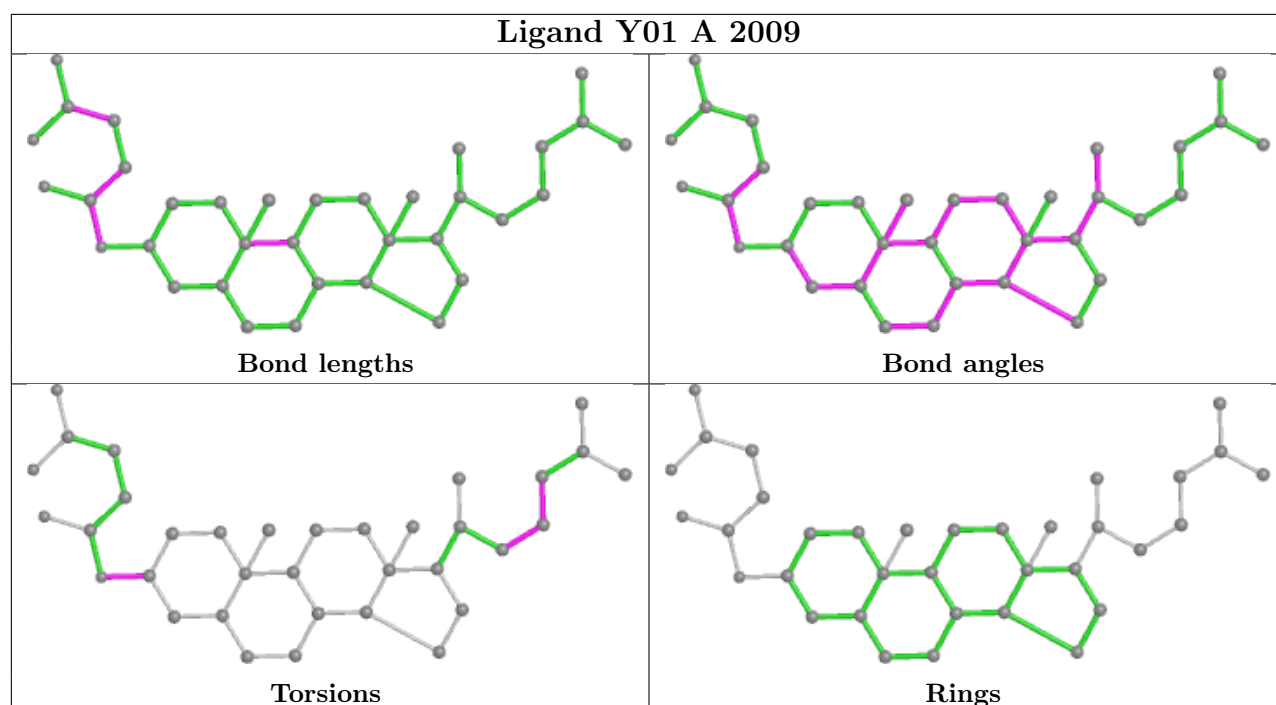


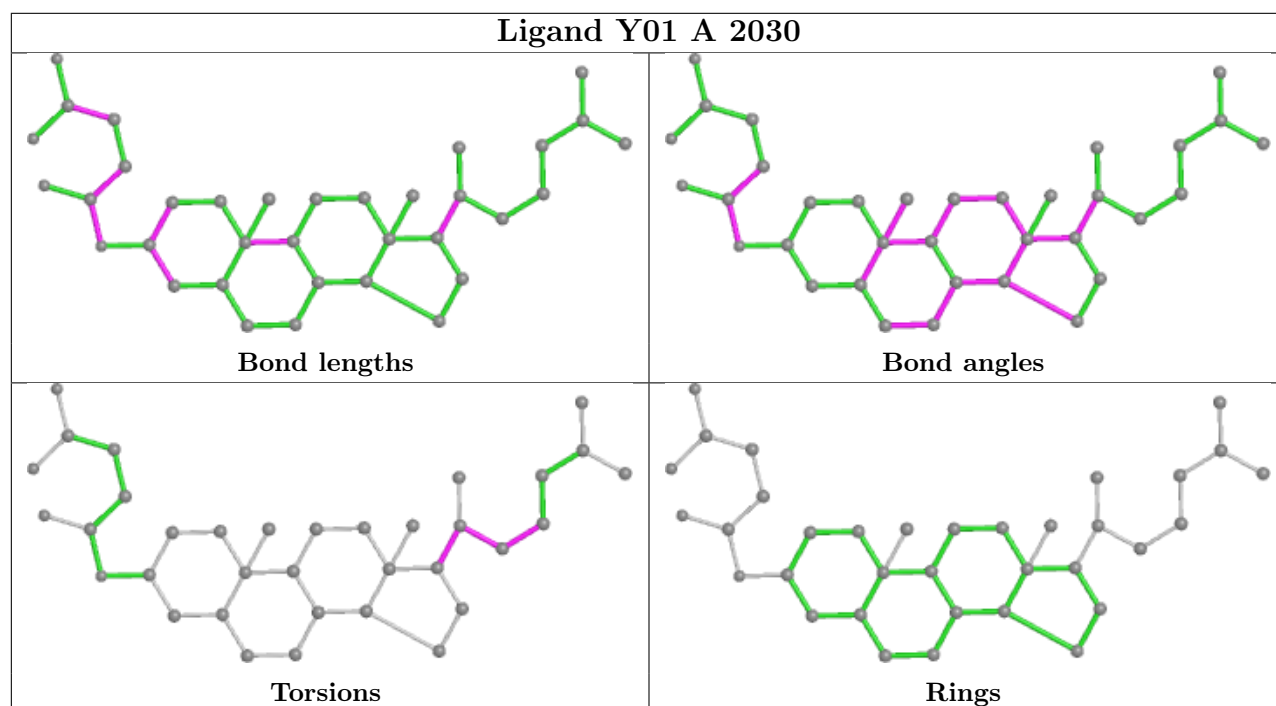
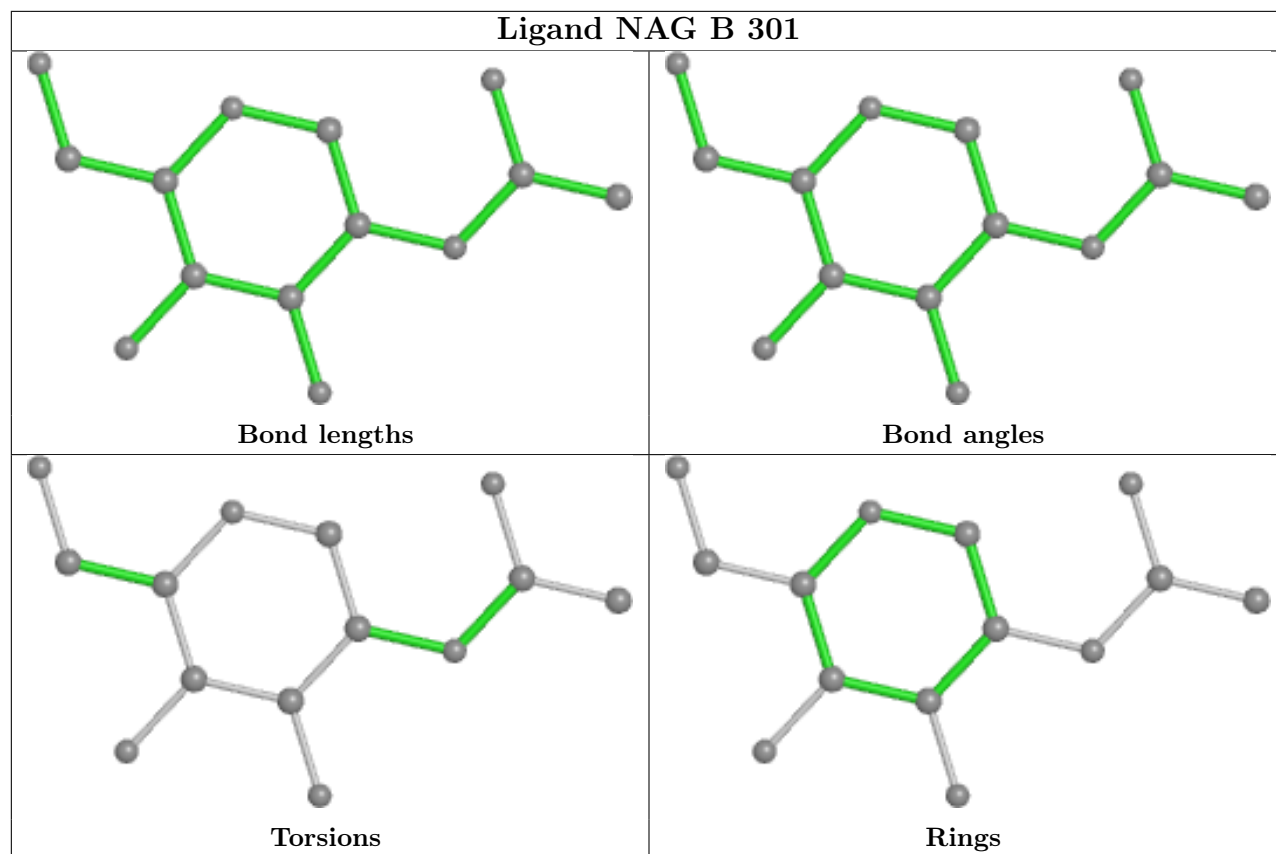


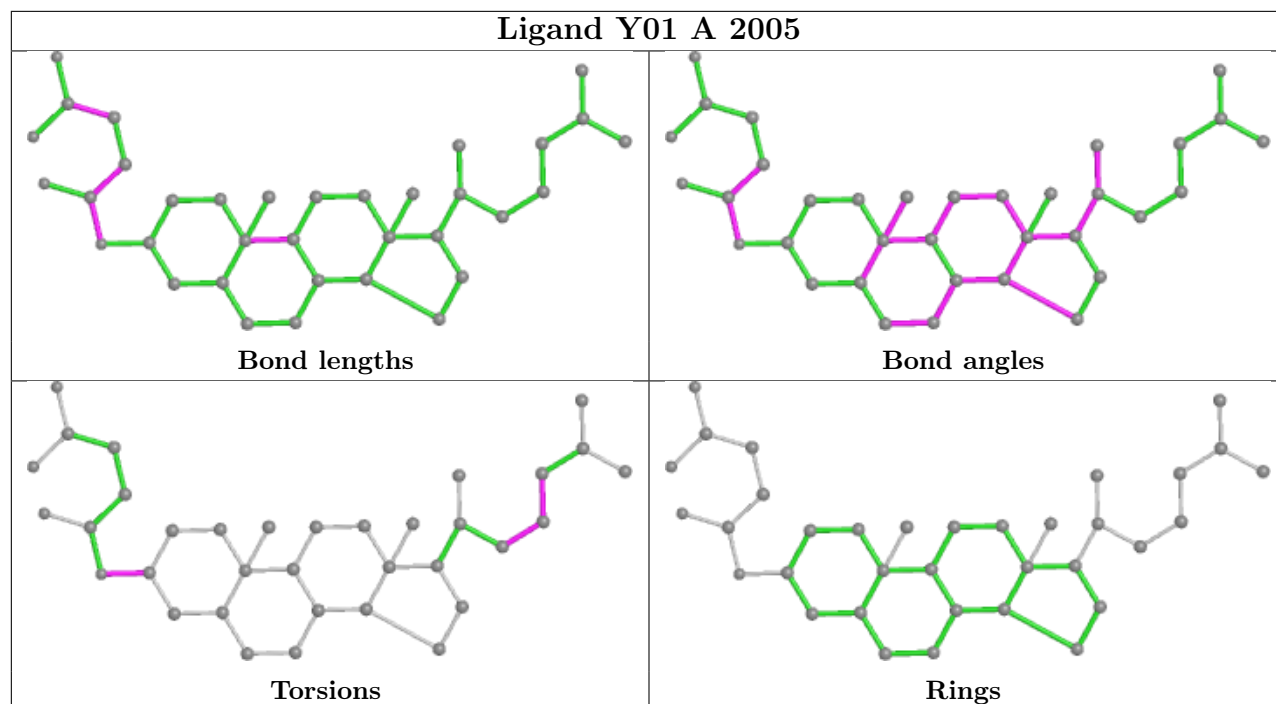


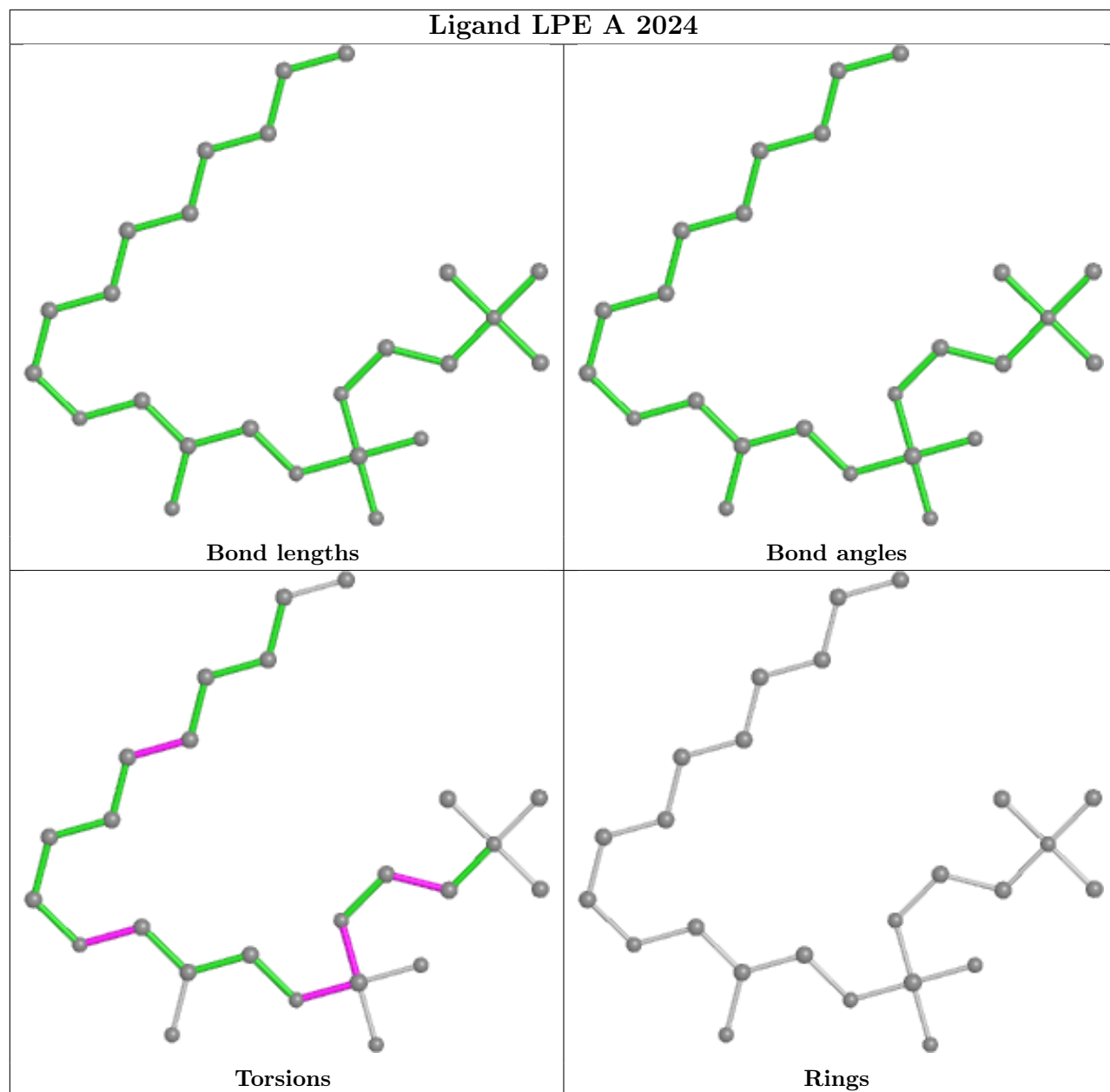


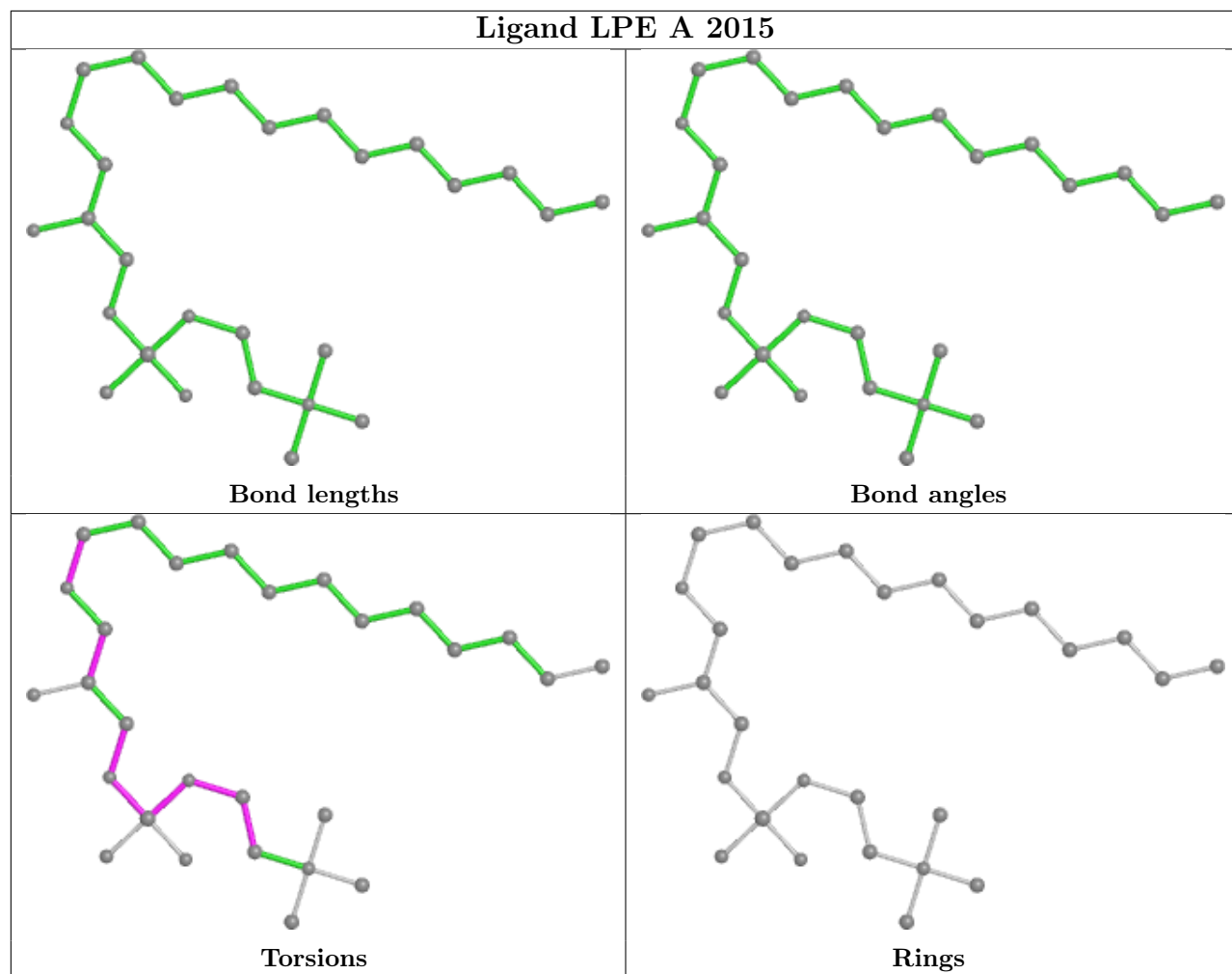


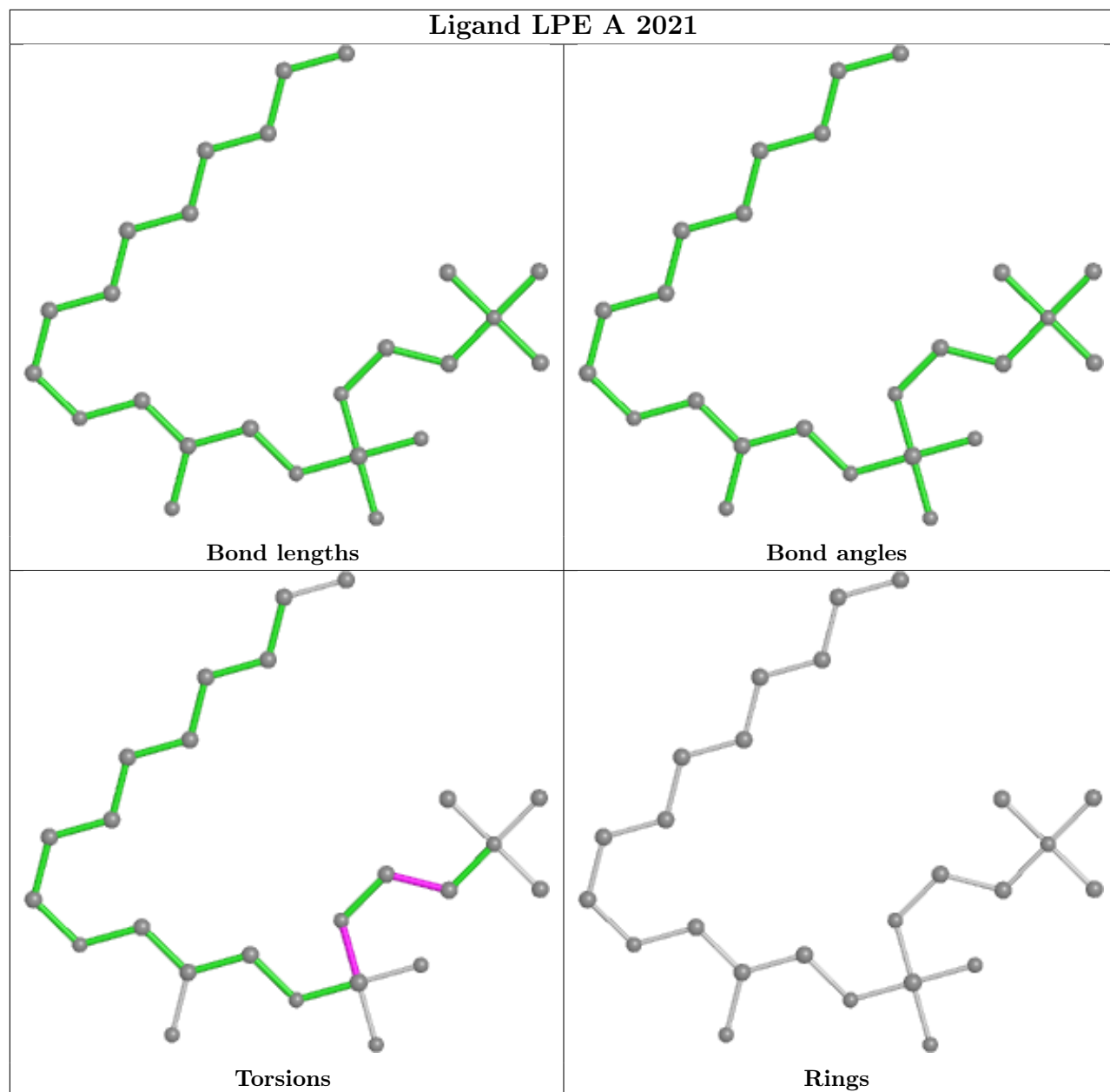


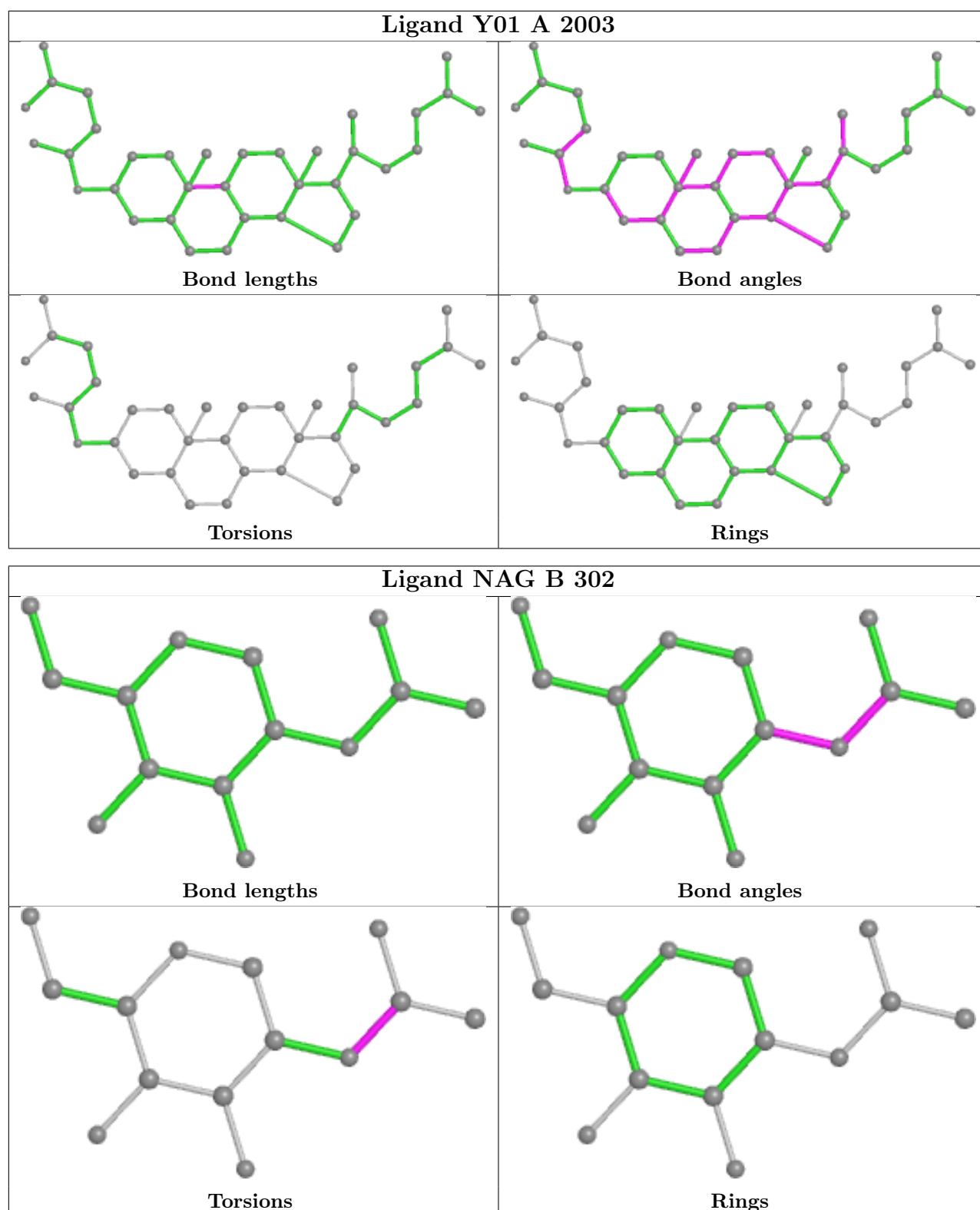




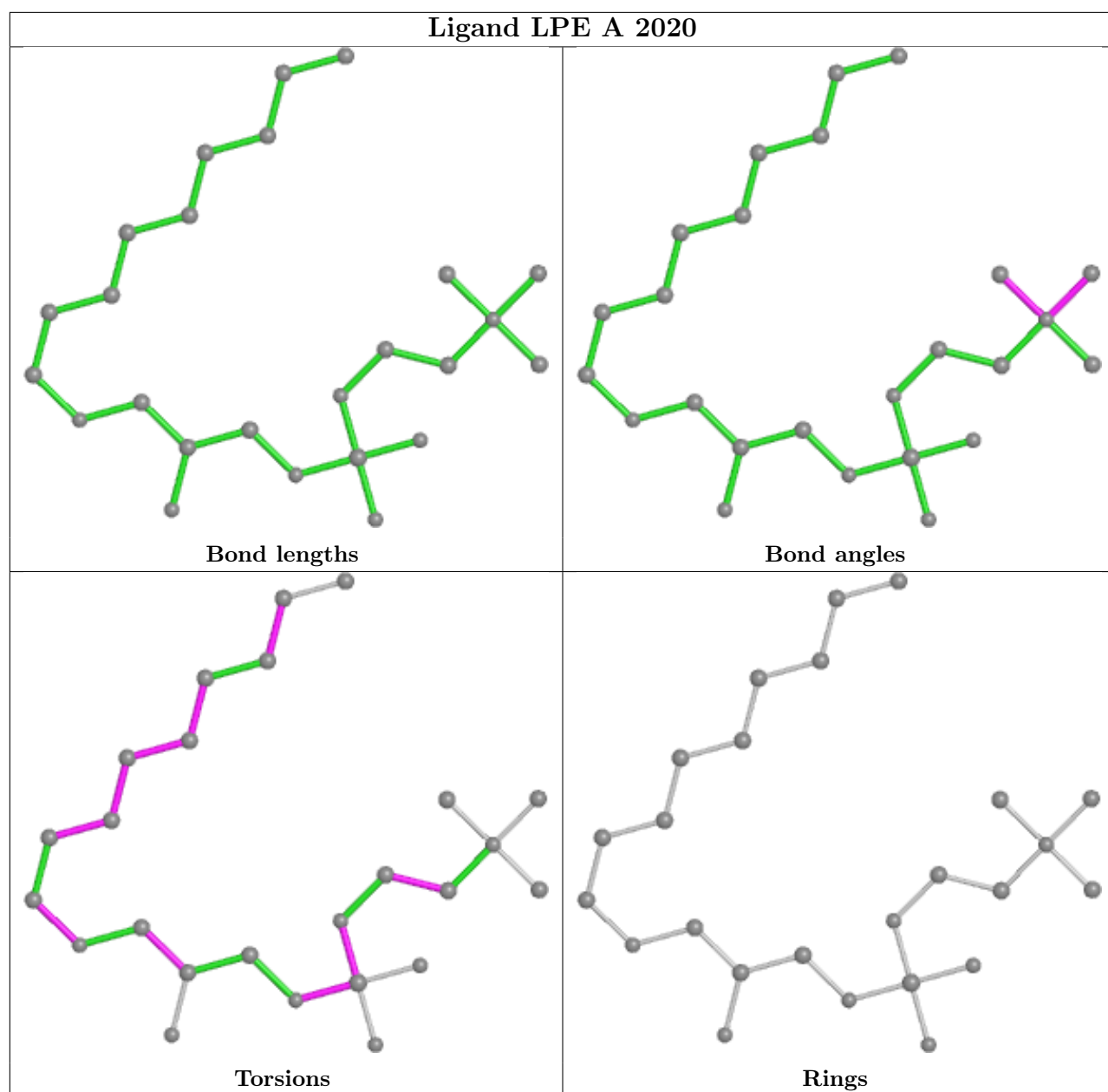


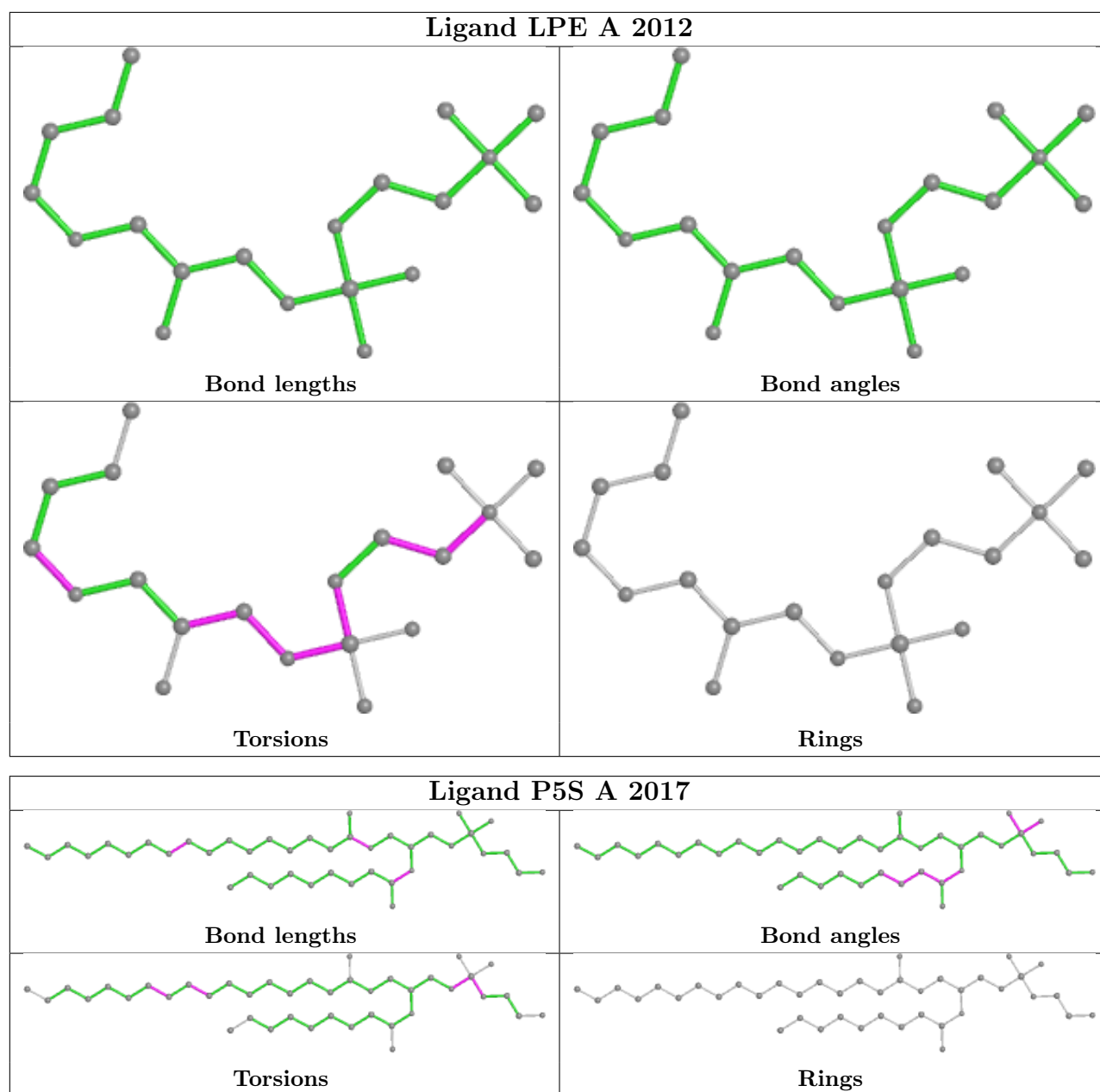


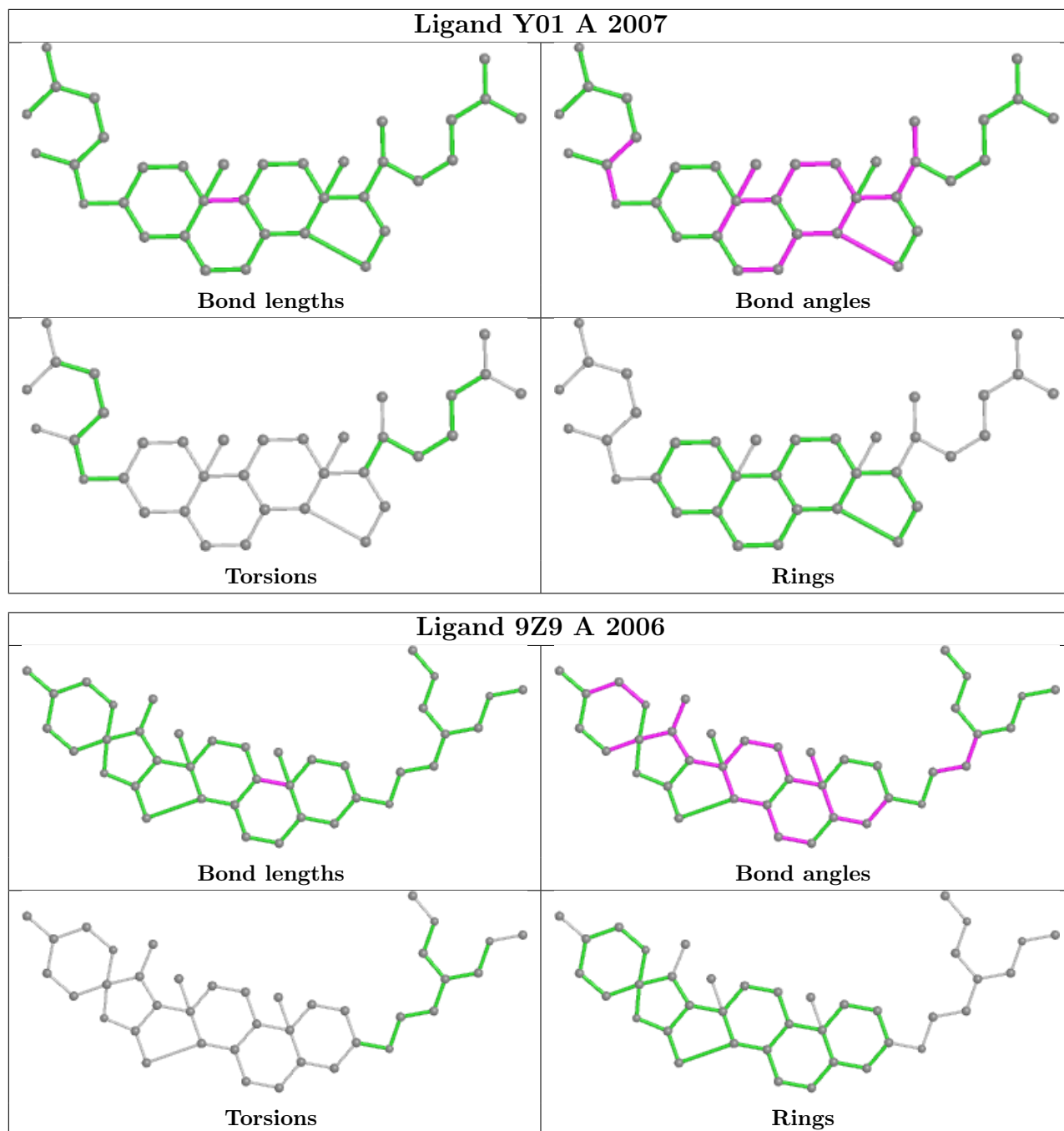


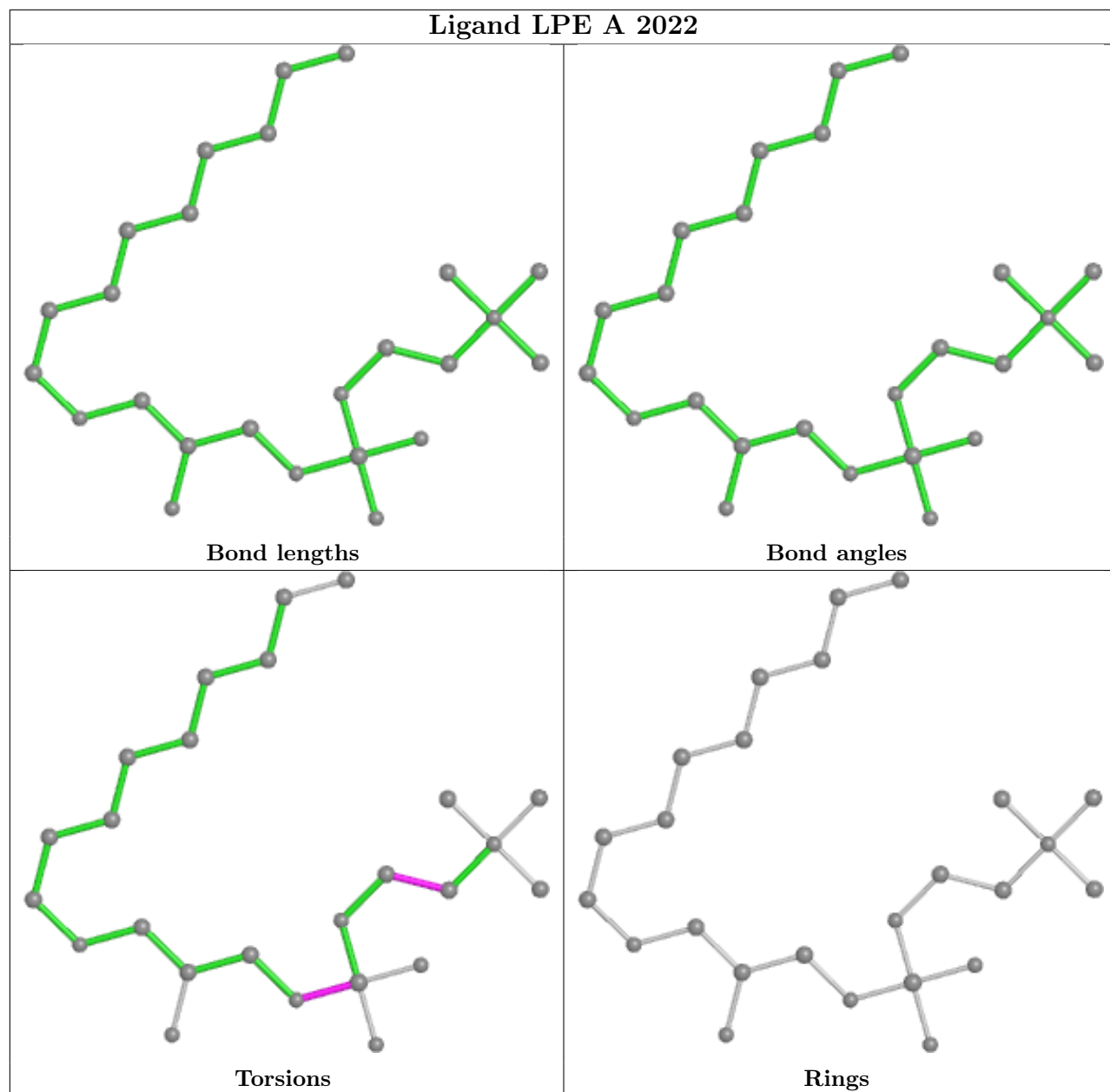


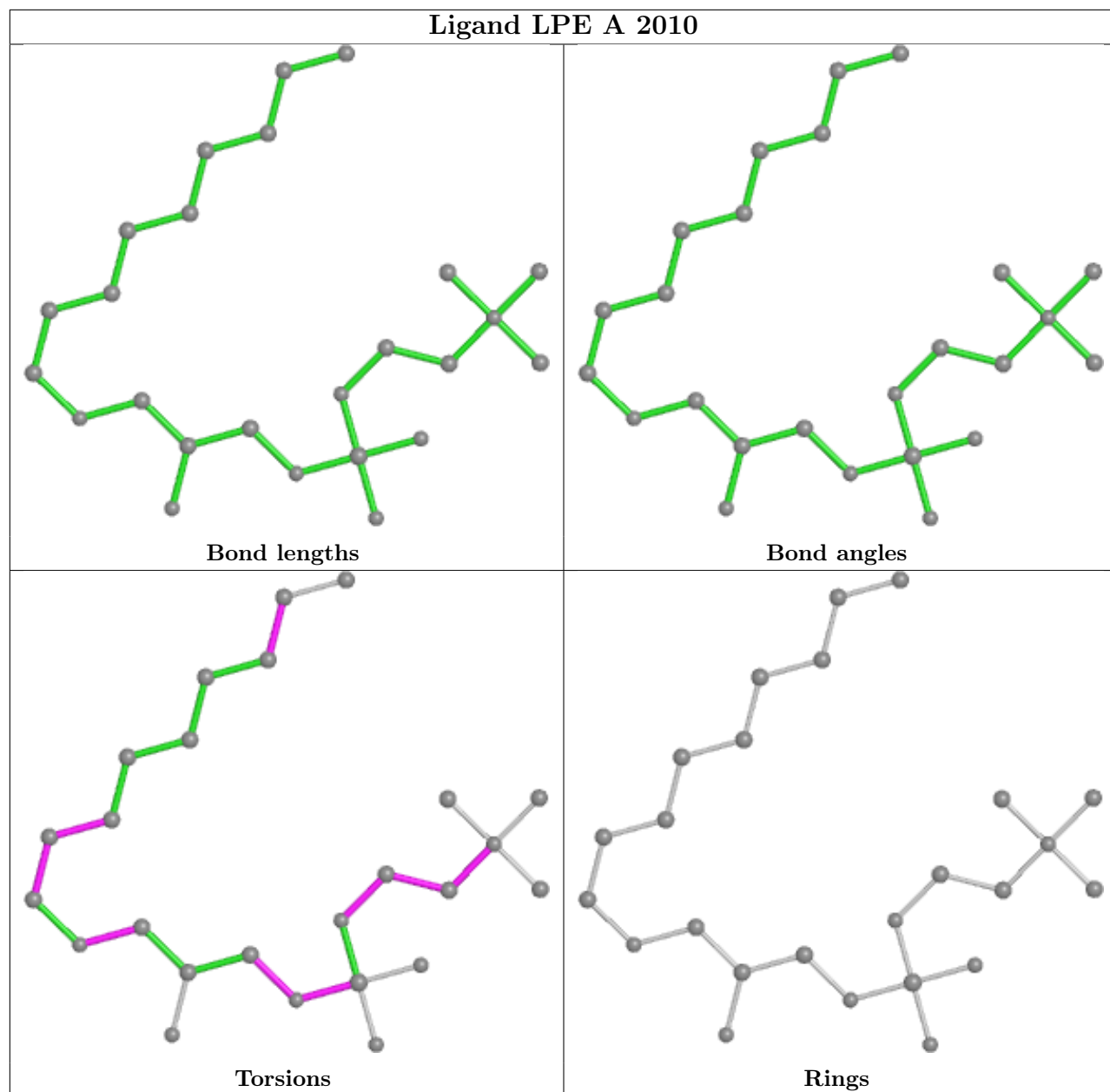


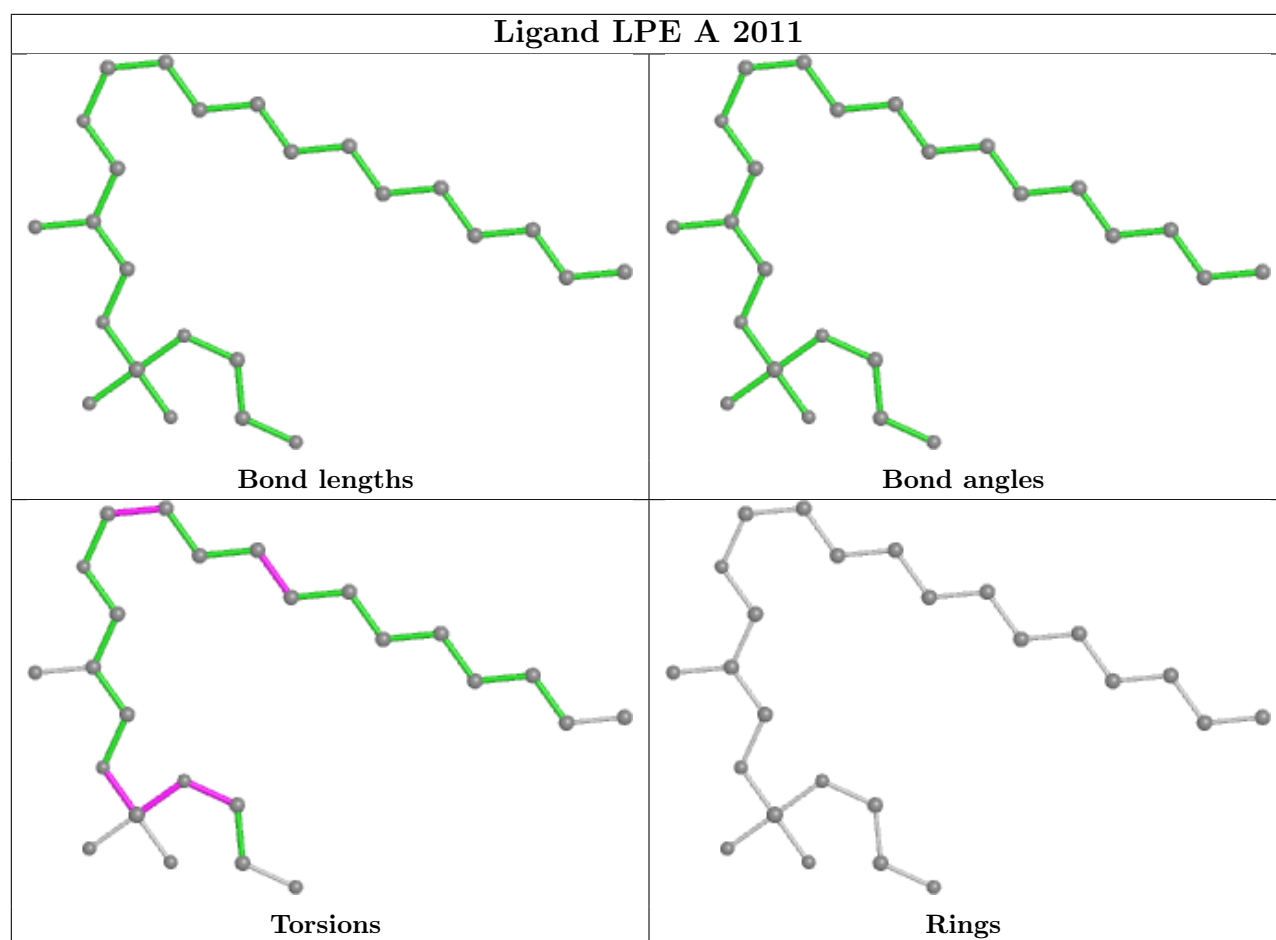


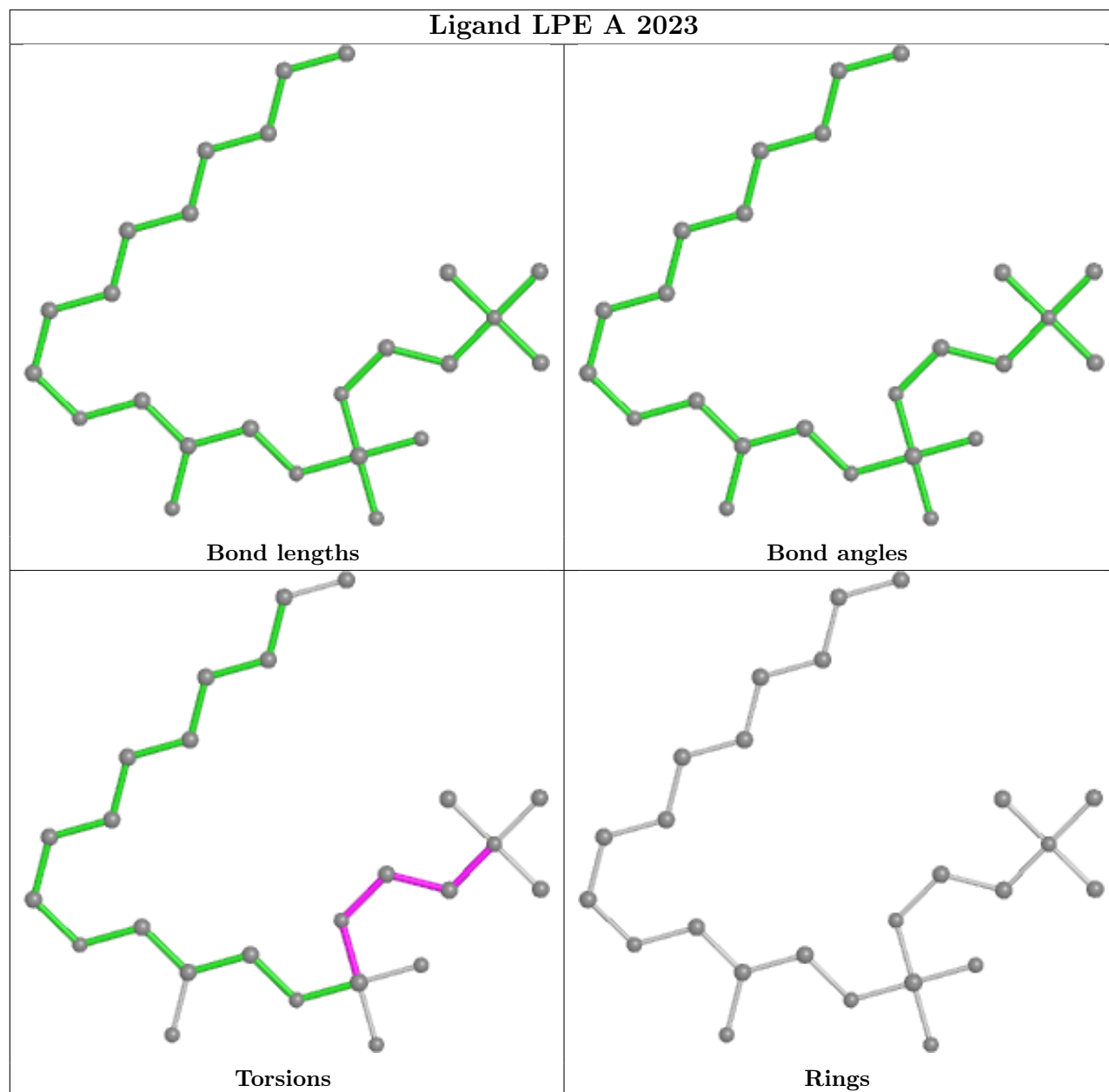


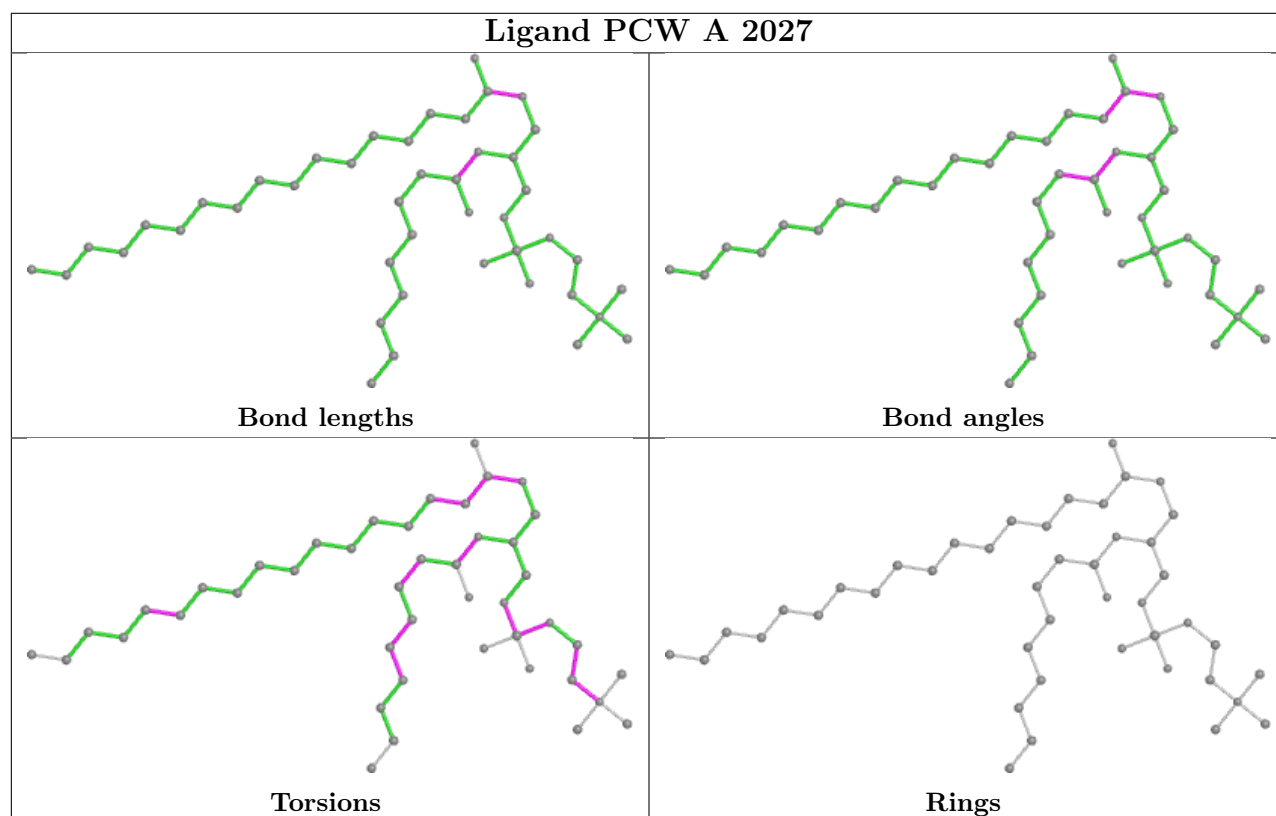
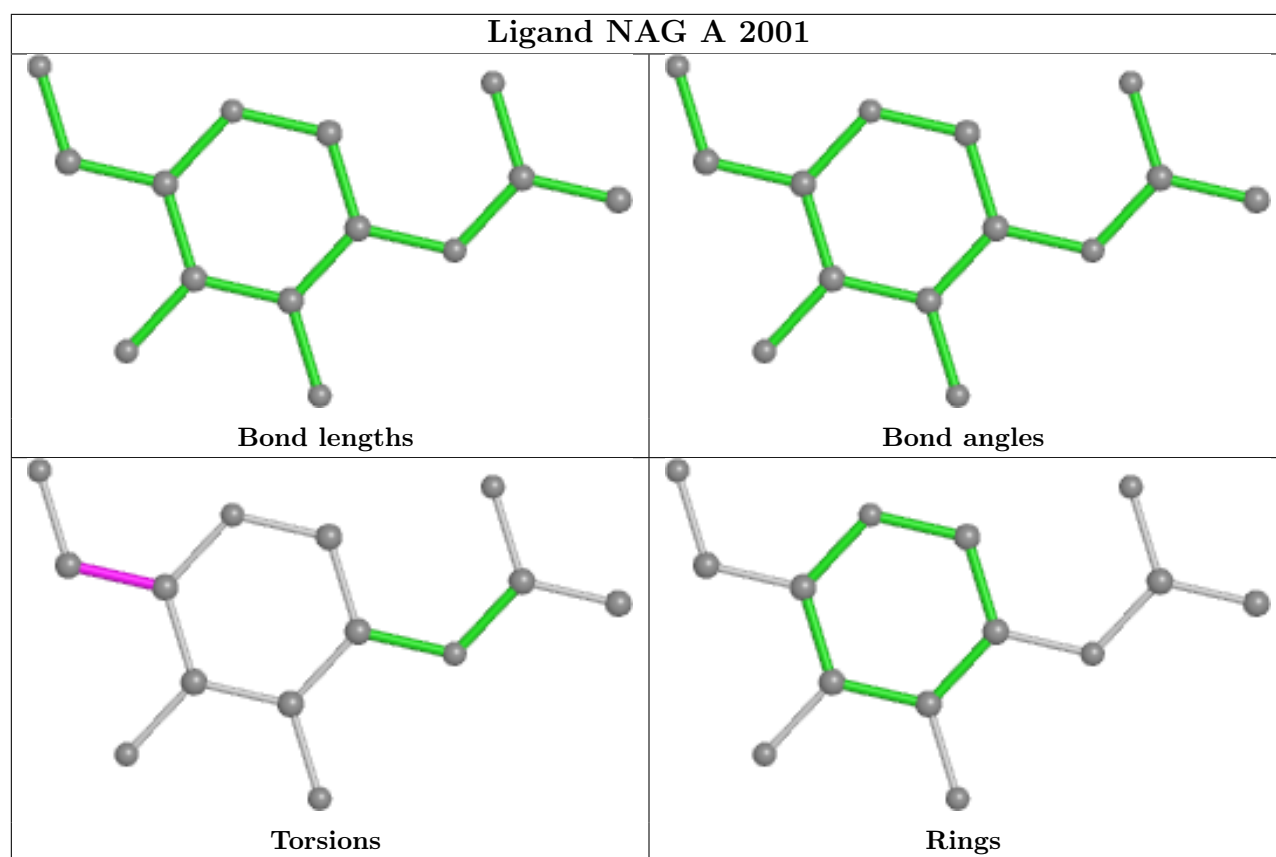




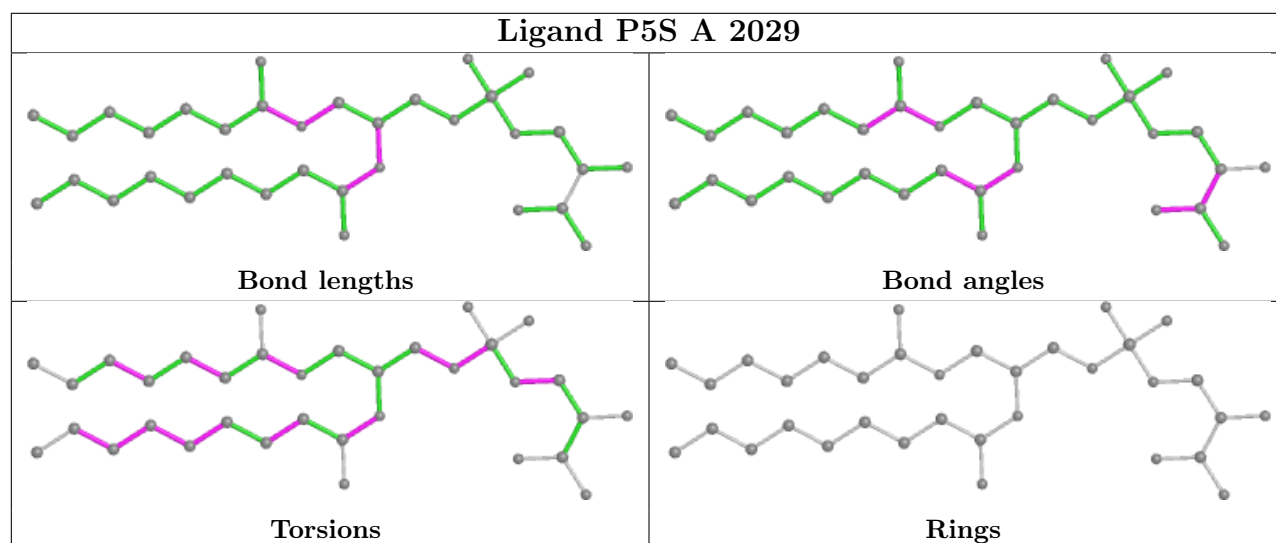
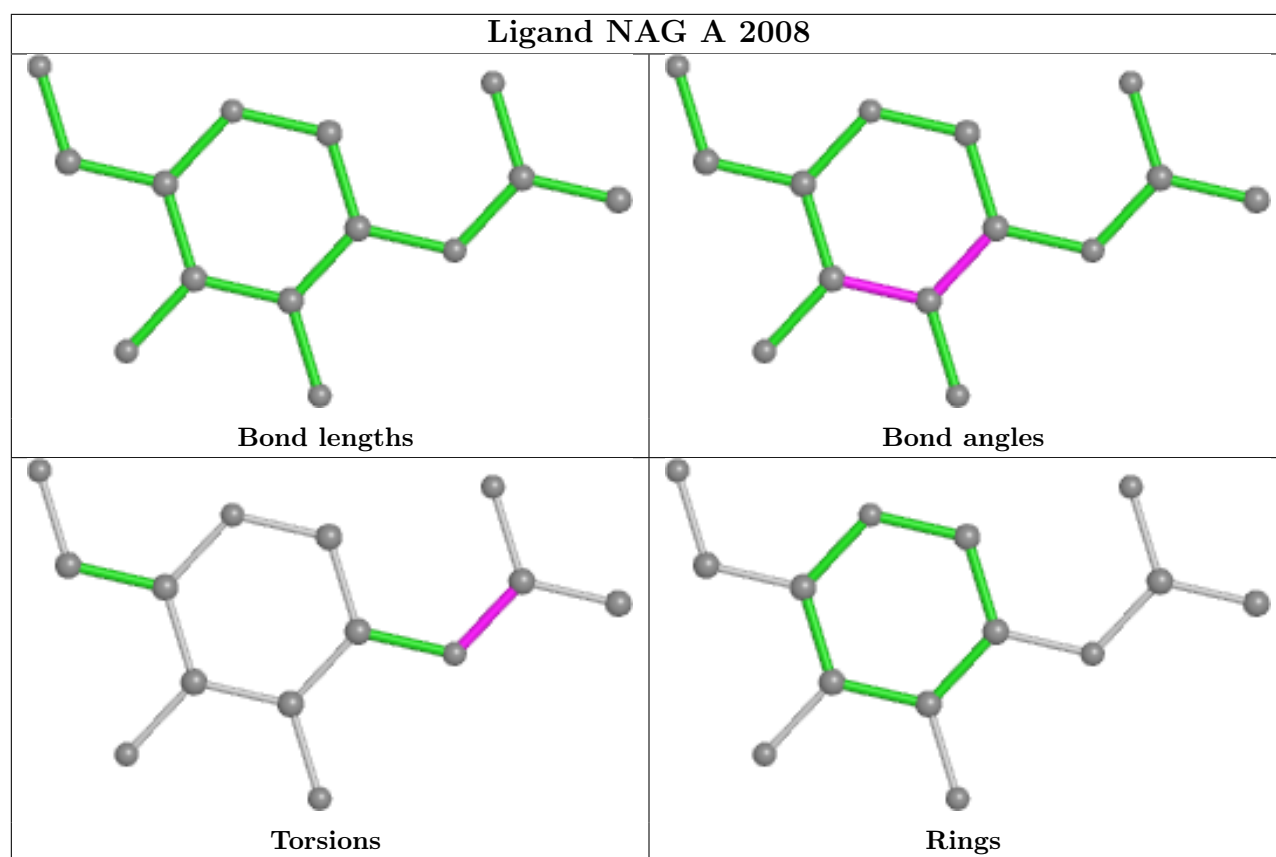


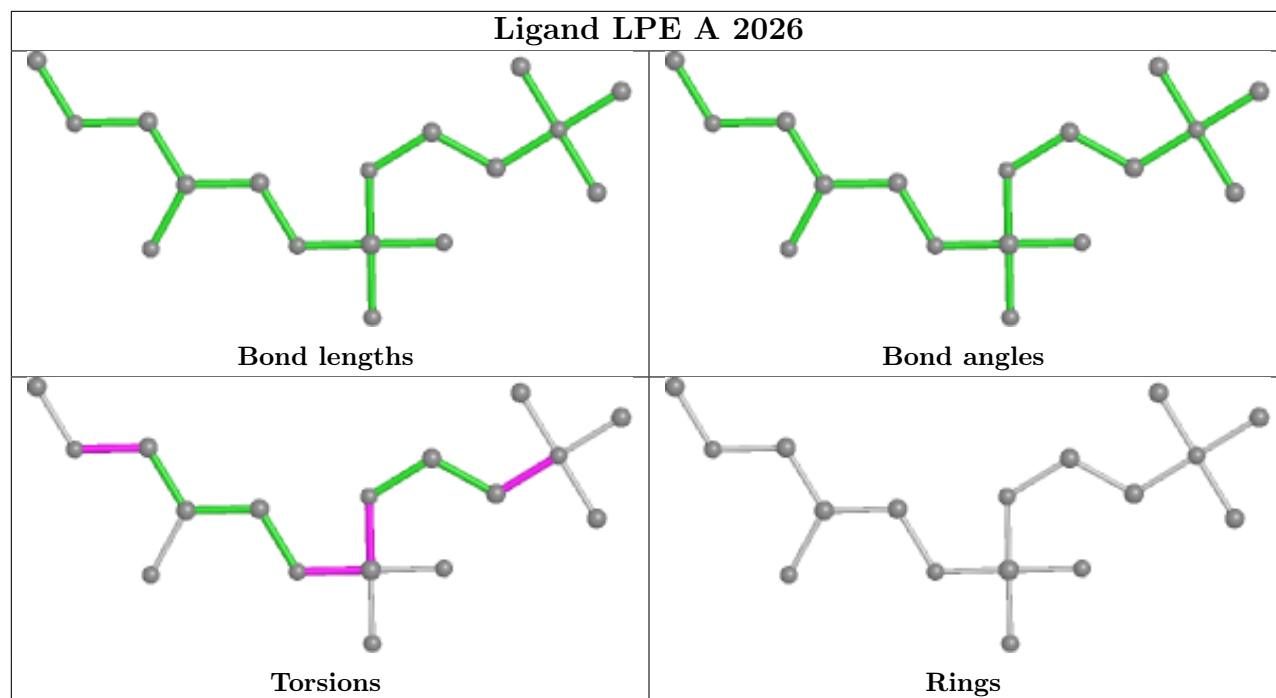


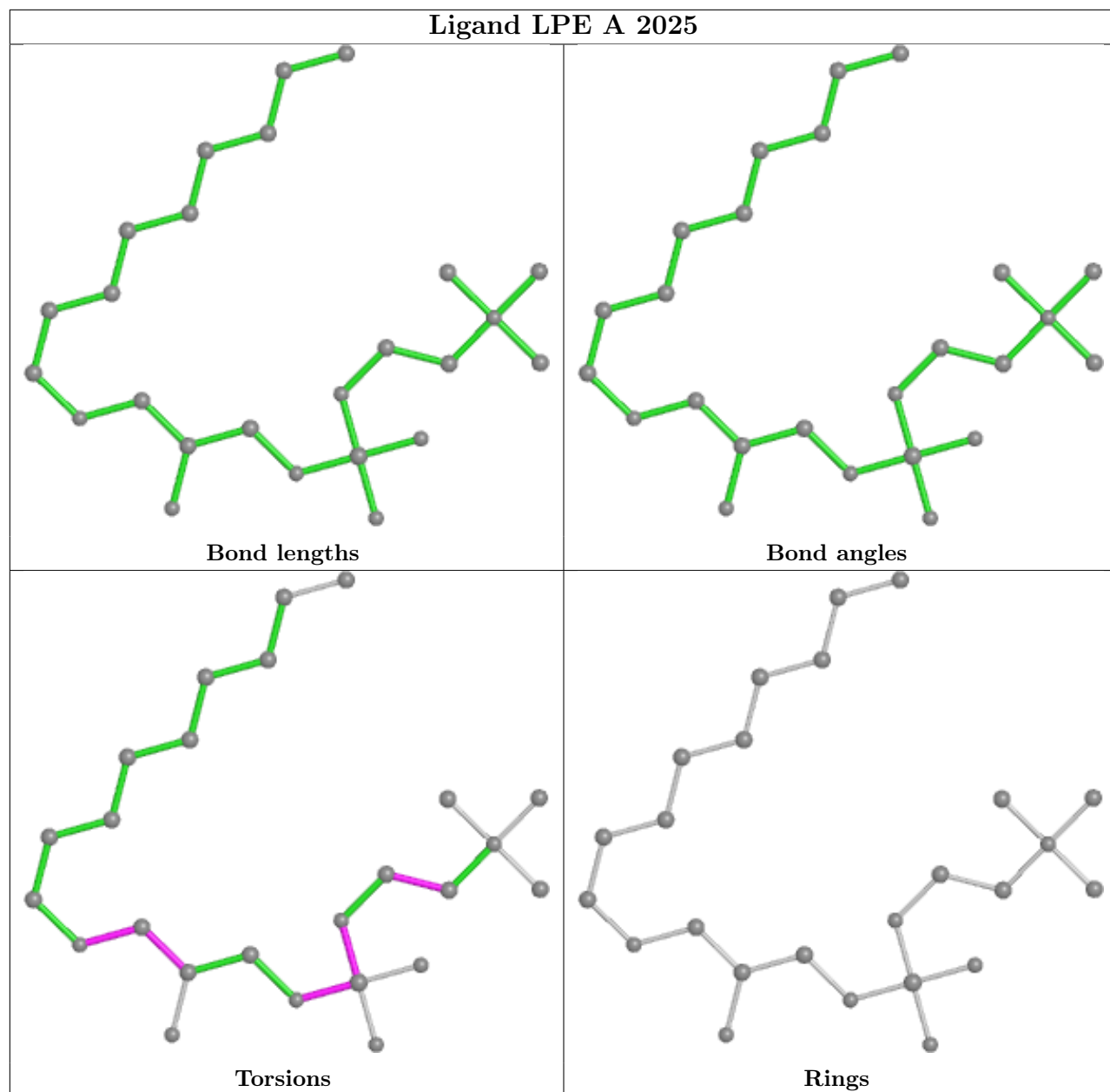


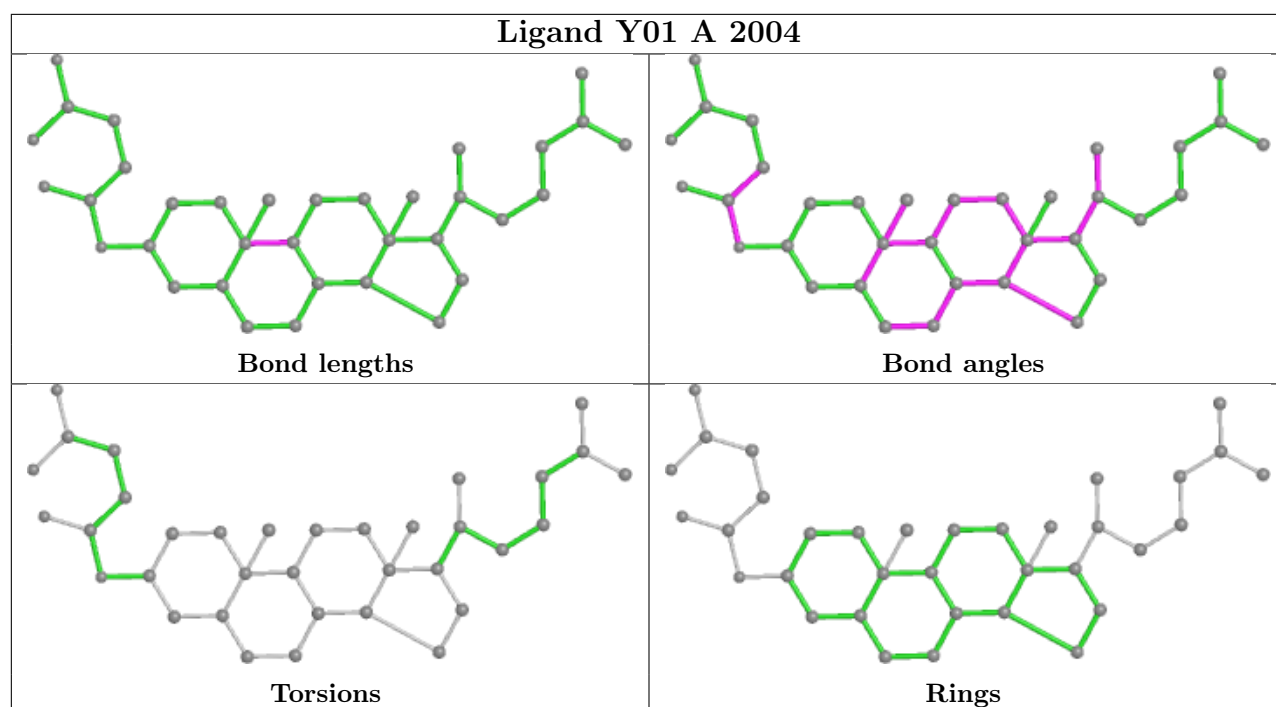












## 5.7 Other polymers [i](#)

There are no such residues in this entry.

## 5.8 Polymer linkage issues [i](#)

There are no chain breaks in this entry.

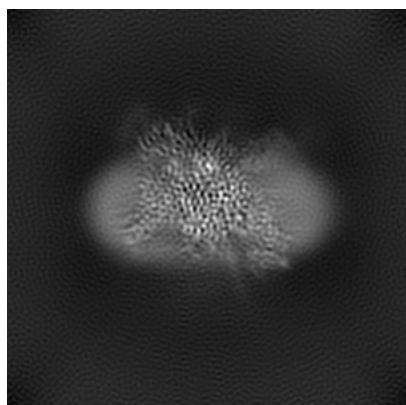
## 6 Map visualisation [i](#)

This section contains visualisations of the EMDB entry EMD-32369. These allow visual inspection of the internal detail of the map and identification of artifacts.

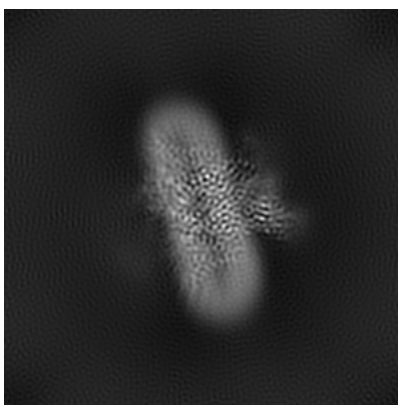
No raw map or half-maps were deposited for this entry and therefore no images, graphs, etc. pertaining to the raw map can be shown.

### 6.1 Orthogonal projections [i](#)

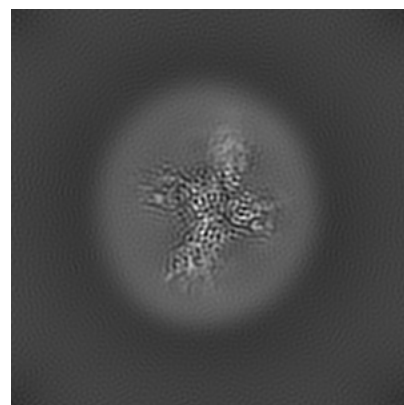
#### 6.1.1 Primary map



X



Y

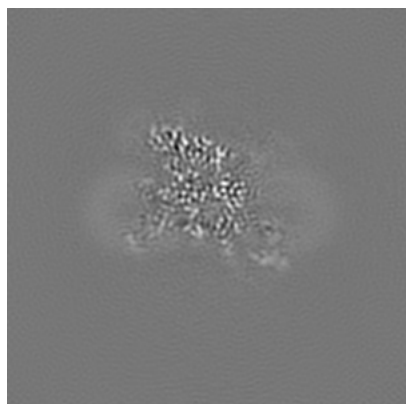


Z

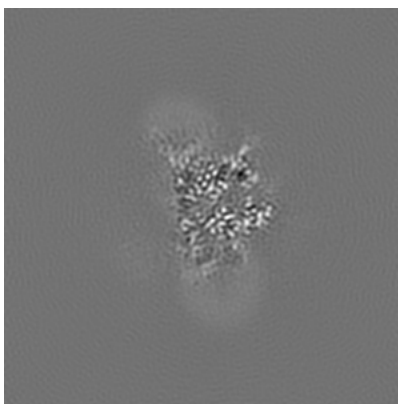
The images above show the map projected in three orthogonal directions.

### 6.2 Central slices [i](#)

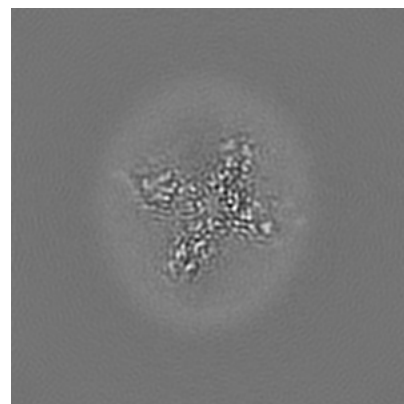
#### 6.2.1 Primary map



X Index: 128



Y Index: 128

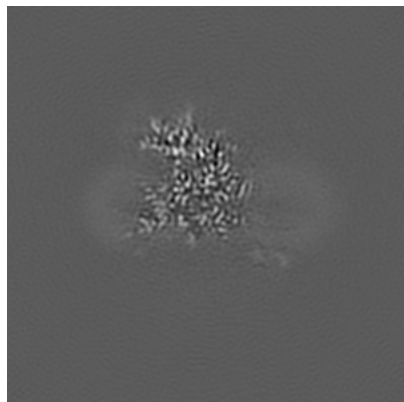


Z Index: 128

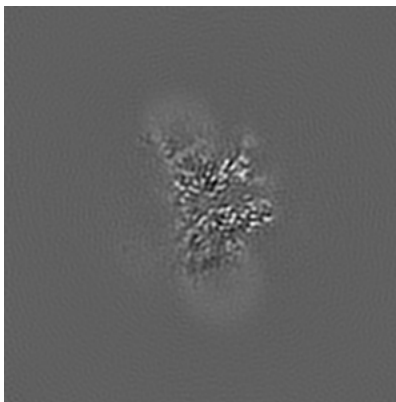
The images above show central slices of the map in three orthogonal directions.

## 6.3 Largest variance slices [\(i\)](#)

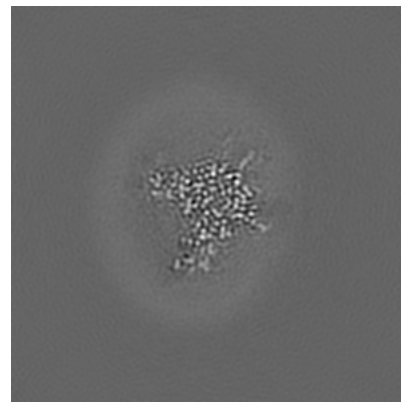
### 6.3.1 Primary map



X Index: 122



Y Index: 130

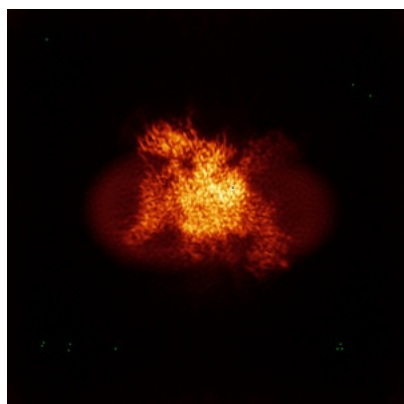


Z Index: 138

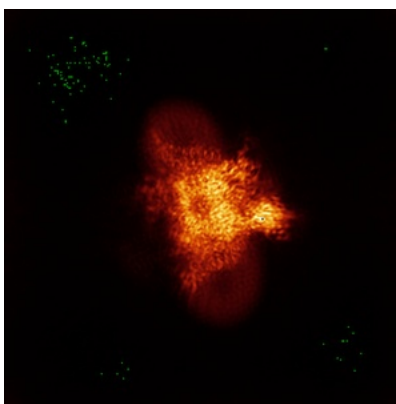
The images above show the largest variance slices of the map in three orthogonal directions.

## 6.4 Orthogonal standard-deviation projections (False-color) [\(i\)](#)

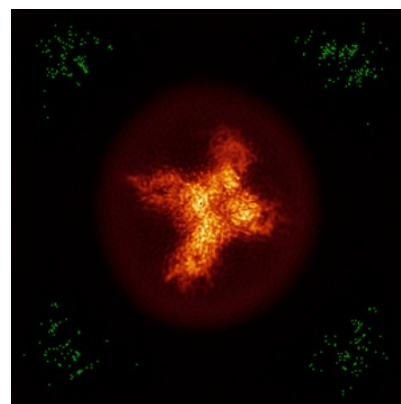
### 6.4.1 Primary map



X



Y



Z

The images above show the map standard deviation projections with false color in three orthogonal directions. Minimum values are shown in green, max in blue, and dark to light orange shades represent small to large values respectively.

## 6.5 Orthogonal surface views [i](#)

### 6.5.1 Primary map



The images above show the 3D surface view of the map at the recommended contour level 0.43. These images, in conjunction with the slice images, may facilitate assessment of whether an appropriate contour level has been provided.

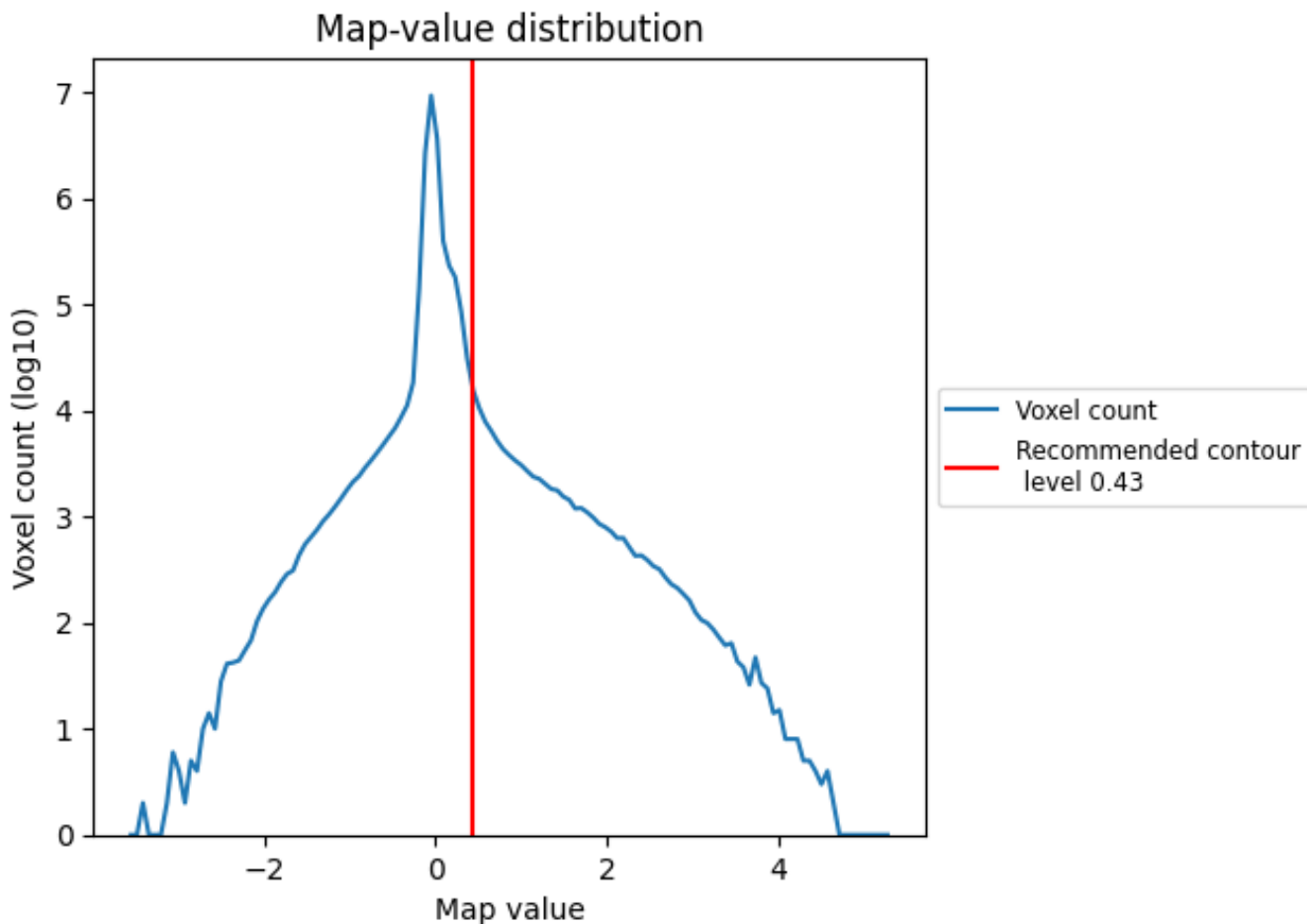
## 6.6 Mask visualisation [i](#)

This section was not generated. No masks/segmentation were deposited.

## 7 Map analysis [i](#)

This section contains the results of statistical analysis of the map.

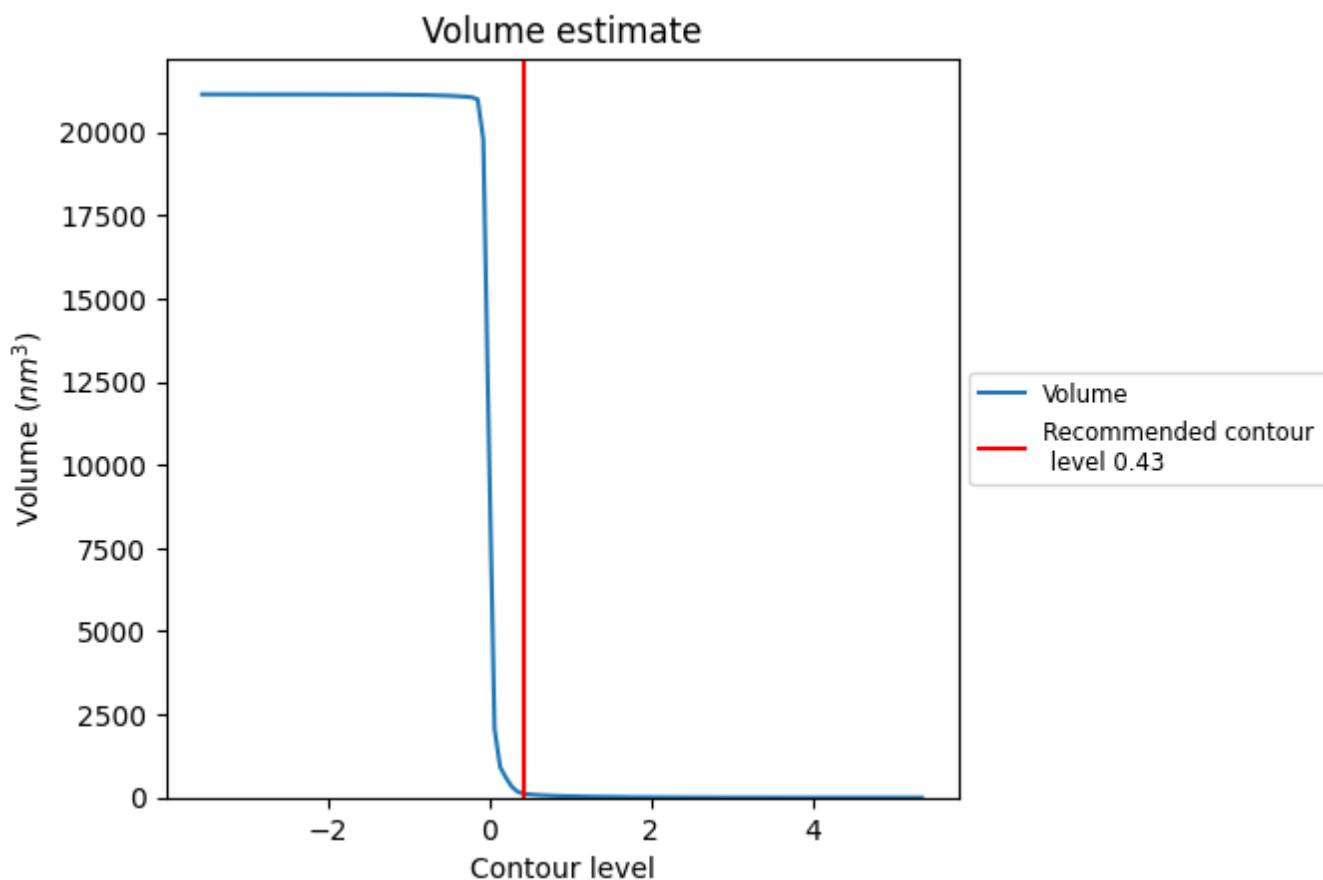
### 7.1 Map-value distribution [i](#)



The map-value distribution is plotted in 128 intervals along the x-axis. The y-axis is logarithmic. A spike in this graph at zero usually indicates that the volume has been masked.



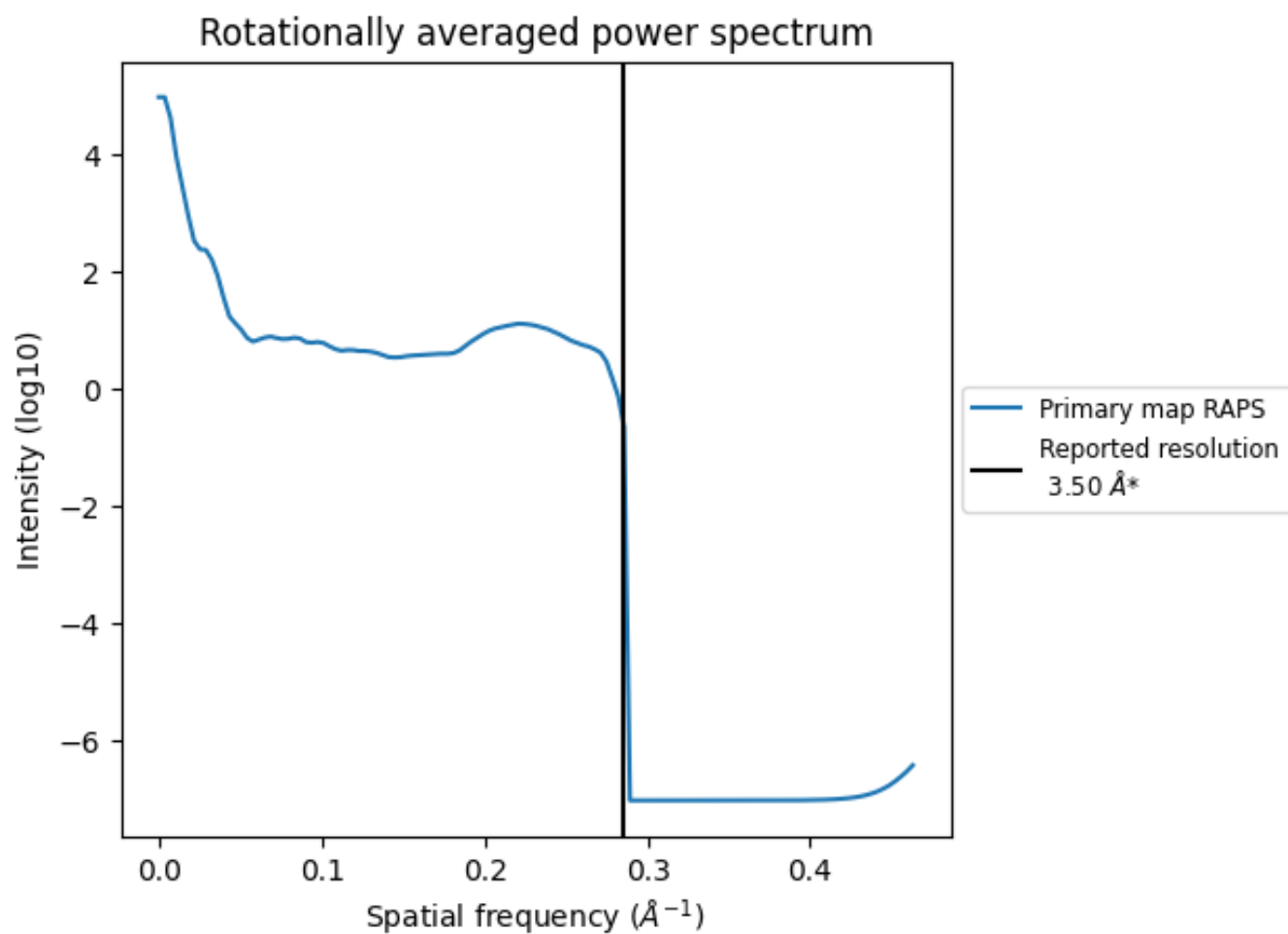
## 7.2 Volume estimate [i](#)



The volume at the recommended contour level is 118 nm<sup>3</sup>; this corresponds to an approximate mass of 106 kDa.

The volume estimate graph shows how the enclosed volume varies with the contour level. The recommended contour level is shown as a vertical line and the intersection between the line and the curve gives the volume of the enclosed surface at the given level.

### 7.3 Rotationally averaged power spectrum [i](#)



\*Reported resolution corresponds to spatial frequency of  $0.286 \text{\AA}^{-1}$

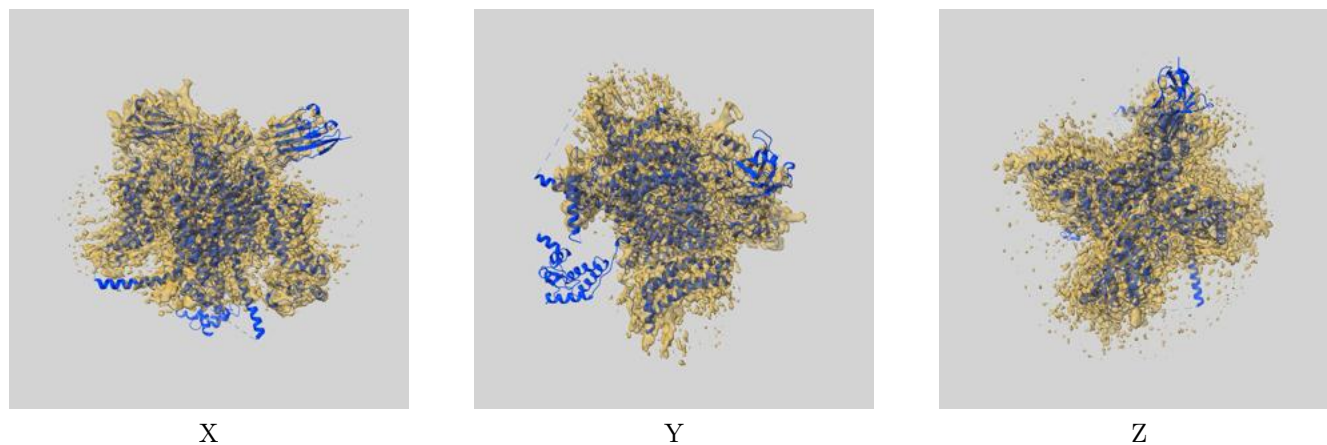
## 8 Fourier-Shell correlation

This section was not generated. No FSC curve or half-maps provided.

## 9 Map-model fit [i](#)

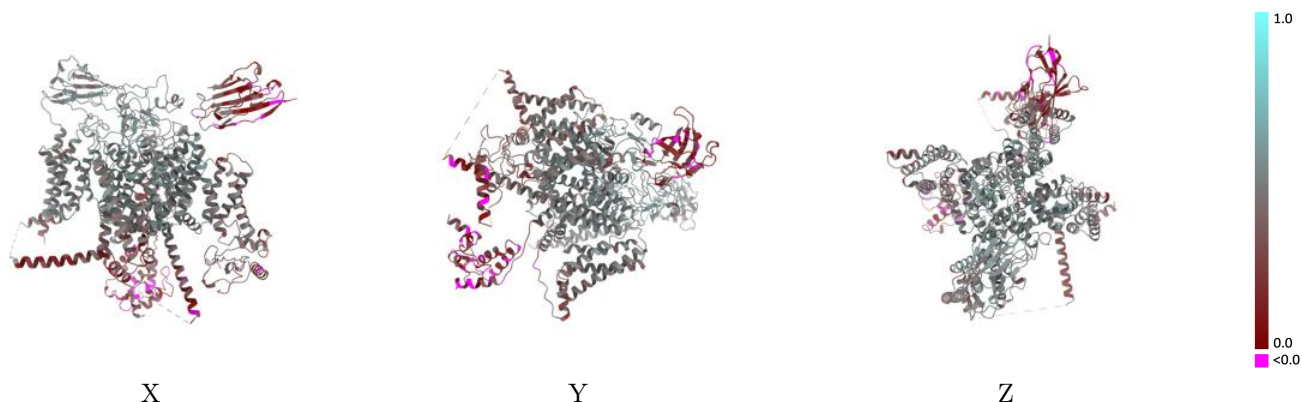
This section contains information regarding the fit between EMDB map EMD-32369 and PDB model 7W9L. Per-residue inclusion information can be found in section 3 on page 11.

### 9.1 Map-model overlay [i](#)



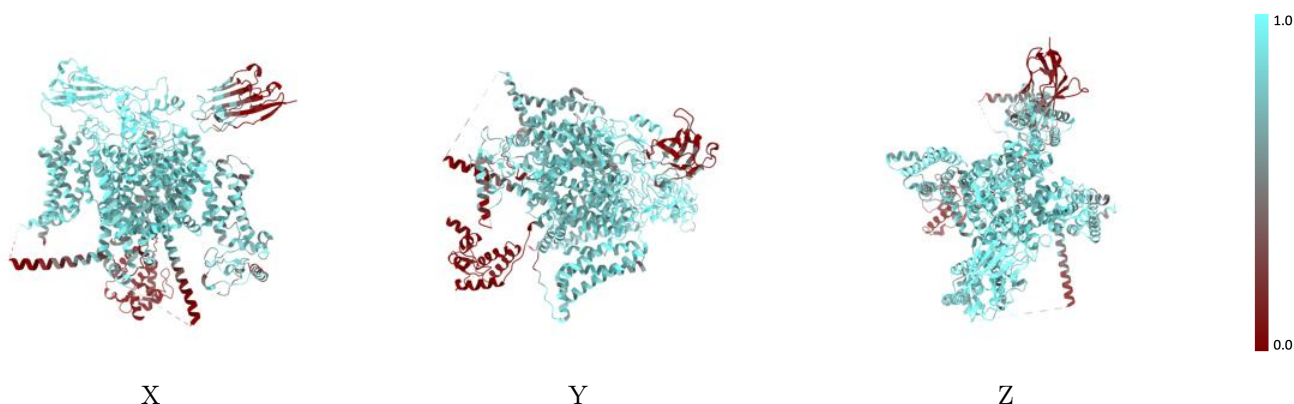
The images above show the 3D surface view of the map at the recommended contour level 0.43 at 50% transparency in yellow overlaid with a ribbon representation of the model coloured in blue. These images allow for the visual assessment of the quality of fit between the atomic model and the map.

## 9.2 Q-score mapped to coordinate model [i](#)



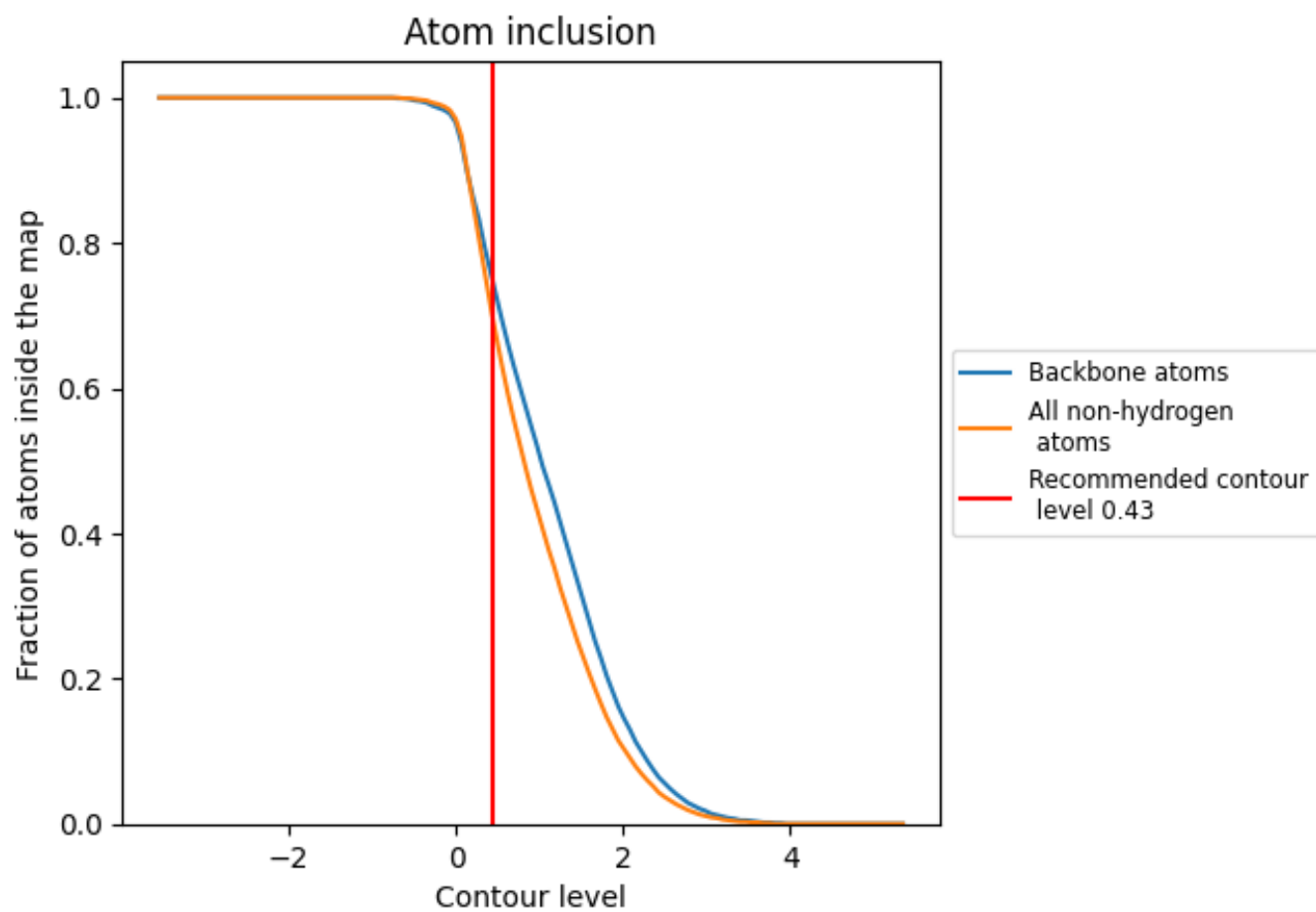
The images above show the model with each residue coloured according to its Q-score. This shows their resolvability in the map with higher Q-score values reflecting better resolvability. Please note: Q-score is calculating the resolvability of atoms, and thus high values are only expected at resolutions at which atoms can be resolved. Low Q-score values may therefore be expected for many entries.

## 9.3 Atom inclusion mapped to coordinate model [i](#)



The images above show the model with each residue coloured according to its atom inclusion. This shows to what extent they are inside the map at the recommended contour level (0.43).















## 9.4 Atom inclusion [i](#)



At the recommended contour level, 75% of all backbone atoms, 70% of all non-hydrogen atoms, are inside the map.

## 9.5 Map-model fit summary [i](#)

The table lists the average atom inclusion at the recommended contour level (0.43) and Q-score for the entire model and for each chain.

Chain	Atom inclusion	Q-score
All	 0.7010	 0.4140
A	 0.7110	 0.4230
B	 0.8600	 0.4750
C	 0.3260	 0.2170
D	 0.7500	 0.3970
E	 0.6430	 0.2600
F	 0.8570	 0.4420

