



Full wwPDB EM Validation Report ⓘ

Jun 28, 2022 – 12:16 PM JST

PDB ID : 7WAH
EMDB ID : EMD-32385
Title : Structure of Cas7-11 in complex with guide RNA and target RNA
Authors : Kato, K.; Okazaki, S.; Isayama, Y.; Nishizawa, T.; Nishimasu, H.
Deposited on : 2021-12-14
Resolution : 2.45 Å (reported)

This is a Full wwPDB EM Validation Report for a publicly released PDB entry.

We welcome your comments at validation@mail.wwpdb.org

A user guide is available at

<https://www.wwpdb.org/validation/2017/EMValidationReportHelp>

with specific help available everywhere you see the ⓘ symbol.

The types of validation reports are described at <http://www.wwpdb.org/validation/2017/FAQs#types>.

The following versions of software and data (see [references ⓘ](#)) were used in the production of this report:

EMDB validation analysis : 0.0.1.dev8
MolProbity : 4.02b-467
Percentile statistics : 20191225.v01 (using entries in the PDB archive December 25th 2019)
Ideal geometry (proteins) : Engh & Huber (2001)
Ideal geometry (DNA, RNA) : Parkinson et al. (1996)
Validation Pipeline (wwPDB-VP) : 2.29

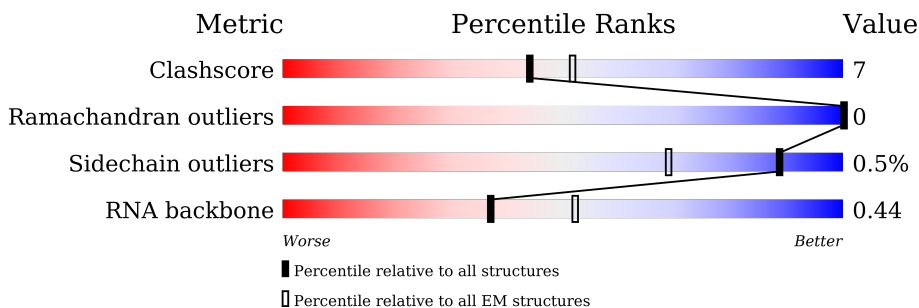
1 Overall quality at a glance

The following experimental techniques were used to determine the structure:

ELECTRON MICROSCOPY




The reported resolution of this entry is 2.45 Å.

Percentile scores (ranging between 0-100) for global validation metrics of the entry are shown in the following graphic. The table shows the number of entries on which the scores are based.



Metric	Whole archive (#Entries)	EM structures (#Entries)
Clashscore	158937	4297
Ramachandran outliers	154571	4023
Sidechain outliers	154315	3826
RNA backbone	4643	859

The table below summarises the geometric issues observed across the polymeric chains and their fit to the map. The red, orange, yellow and green segments of the bar indicate the fraction of residues that contain outliers for ≥ 3 , 2, 1 and 0 types of geometric quality criteria respectively. A grey segment represents the fraction of residues that are not modelled. The numeric value for each fraction is indicated below the corresponding segment, with a dot representing fractions $\leq 5\%$. The upper red bar (where present) indicates the fraction of residues that have poor fit to the EM map (all-atom inclusion $< 40\%$). The numeric value is given above the bar.

Mol	Chain	Length	Quality of chain
1	R	39	
2	D	23	
3	A	1617	

2 Entry composition i

There are 4 unique types of molecules in this entry. The entry contains 13217 atoms, of which 0 are hydrogens and 0 are deuteriums.

In the tables below, the AltConf column contains the number of residues with at least one atom in alternate conformation and the Trace column contains the number of residues modelled with at most 2 atoms.

- Molecule 1 is a RNA chain called crRNA (39-MER).

Mol	Chain	Residues	Atoms					AltConf	Trace
			Total	C	N	O	P		
1	R	39	826	370	142	276	38	0	0

- Molecule 2 is a RNA chain called tgRNA (5'-R(P*UP*AP*CP*CP*CP*AP*UP*GP*UP*C P*GP*AP*AP*GP*AP*CP*AP*AP*CP*AP*AP*AP*G)-3').

Mol	Chain	Residues	Atoms					AltConf	Trace
			Total	C	N	O	P		
2	D	23	492	221	94	154	23	0	0

- Molecule 3 is a protein called CRISPR-associated RAMP family protein.

Mol	Chain	Residues	Atoms					AltConf	Trace
			Total	C	N	O	S		
3	A	1473	11895	7539	2112	2188	56	0	0

There are 19 discrepancies between the modelled and reference sequences:

Chain	Residue	Modelled	Actual	Comment	Reference
A	429	ALA	ASP	engineered mutation	UNP A0A401FT36
A	654	ALA	ASP	engineered mutation	UNP A0A401FT36
A	753	ALA	ASP	engineered mutation	UNP A0A401FT36
A	1602	SER	-	expression tag	UNP A0A401FT36
A	1603	SER	-	expression tag	UNP A0A401FT36
A	1604	GLY	-	expression tag	UNP A0A401FT36
A	1605	LEU	-	expression tag	UNP A0A401FT36
A	1606	VAL	-	expression tag	UNP A0A401FT36
A	1607	PRO	-	expression tag	UNP A0A401FT36
A	1608	ARG	-	expression tag	UNP A0A401FT36
A	1609	GLY	-	expression tag	UNP A0A401FT36
A	1610	SER	-	expression tag	UNP A0A401FT36
A	1611	HIS	-	expression tag	UNP A0A401FT36
A	1612	HIS	-	expression tag	UNP A0A401FT36

Continued on next page...

Continued from previous page...

Chain	Residue	Modelled	Actual	Comment	Reference
A	1613	HIS	-	expression tag	UNP A0A401FT36
A	1614	HIS	-	expression tag	UNP A0A401FT36
A	1615	HIS	-	expression tag	UNP A0A401FT36
A	1616	HIS	-	expression tag	UNP A0A401FT36
A	1617	HIS	-	expression tag	UNP A0A401FT36


- Molecule 4 is ZINC ION (three-letter code: ZN) (formula: Zn) (labeled as "Ligand of Interest" by depositor).

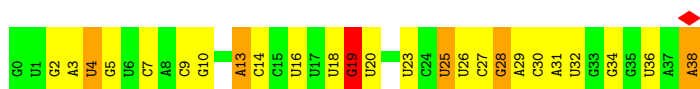
Mol	Chain	Residues	Atoms		AltConf
4	A	4	Total	Zn	0
			4	4	

3 Residue-property plots

These plots are drawn for all protein, RNA, DNA and oligosaccharide chains in the entry. The first graphic for a chain summarises the proportions of the various outlier classes displayed in the second graphic. The second graphic shows the sequence view annotated by issues in geometry and atom inclusion in map density. Residues are color-coded according to the number of geometric quality criteria for which they contain at least one outlier: green = 0, yellow = 1, orange = 2 and red = 3 or more. A red diamond above a residue indicates a poor fit to the EM map for this residue (all-atom inclusion < 40%). Stretches of 2 or more consecutive residues without any outlier are shown as a green connector. Residues present in the sample, but not in the model, are shown in grey.

- Molecule 1: crRNA (39-MER)

Chain R: 




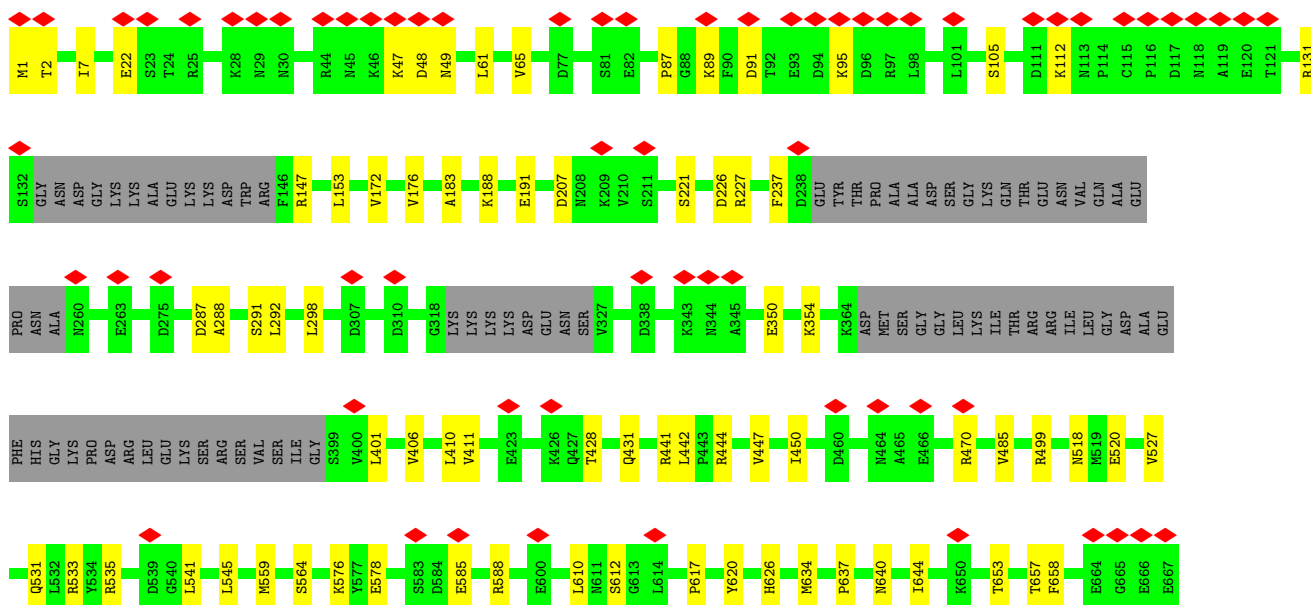
- Molecule 2: tgRNA (5'-R(P*UP*AP*CP*CP*CP*AP*UP*GP*UP*CP*GP*AP*AP*GP*AP*CP*AP*AP*CP*AP*AP*AP*G)-3')

Chain D: 



- Molecule 3: CRISPR-associated RAMP family protein

Chain A: 



4 Experimental information

Property	Value	Source
EM reconstruction method	SINGLE PARTICLE	Depositor
Imposed symmetry	POINT, Not provided	
Number of particles used	127452	Depositor
Resolution determination method	FSC 0.143 CUT-OFF	Depositor
CTF correction method	PHASE FLIPPING AND AMPLITUDE CORRECTION	Depositor
Microscope	FEI TITAN KRIOS	Depositor
Voltage (kV)	300	Depositor
Electron dose ($e^-/\text{\AA}^2$)	76.5	Depositor
Minimum defocus (nm)	600	Depositor
Maximum defocus (nm)	1500	Depositor
Magnification	Not provided	
Image detector	GATAN K3 (6k x 4k)	Depositor
Maximum map value	6.126	Depositor
Minimum map value	-3.969	Depositor
Average map value	-0.006	Depositor
Map value standard deviation	0.105	Depositor
Recommended contour level	1.0	Depositor
Map size (Å)	424.96, 424.96, 424.96	wwPDB
Map dimensions	512, 512, 512	wwPDB
Map angles (°)	90.0, 90.0, 90.0	wwPDB
Pixel spacing (Å)	0.83, 0.83, 0.83	Depositor

5 Model quality [i](#)

5.1 Standard geometry [i](#)

Bond lengths and bond angles in the following residue types are not validated in this section:
ZN

The Z score for a bond length (or angle) is the number of standard deviations the observed value is removed from the expected value. A bond length (or angle) with $|Z| > 5$ is considered an outlier worth inspection. RMSZ is the root-mean-square of all Z scores of the bond lengths (or angles).

Mol	Chain	Bond lengths		Bond angles	
		RMSZ	# Z >5	RMSZ	# Z >5
1	R	0.26	0/922	0.84	1/1435 (0.1%)
2	D	0.25	0/551	0.82	0/856
3	A	0.25	0/12178	0.49	0/16405
All	All	0.25	0/13651	0.54	1/18696 (0.0%)

There are no bond length outliers.

All (1) bond angle outliers are listed below:

Mol	Chain	Res	Type	Atoms	Z	Observed(°)	Ideal(°)
1	R	19	G	O4'-C1'-N9	6.05	113.04	108.20

There are no chirality outliers.

There are no planarity outliers.

5.2 Too-close contacts [i](#)

In the following table, the Non-H and H(model) columns list the number of non-hydrogen atoms and hydrogen atoms in the chain respectively. The H(added) column lists the number of hydrogen atoms added and optimized by MolProbity. The Clashes column lists the number of clashes within the asymmetric unit, whereas Symm-Clashes lists symmetry-related clashes.

Mol	Chain	Non-H	H(model)	H(added)	Clashes	Symm-Clashes
1	R	826	0	418	22	0
2	D	492	0	251	6	0
3	A	11895	0	11727	165	0
4	A	4	0	0	0	0
All	All	13217	0	12396	175	0

The all-atom clashscore is defined as the number of clashes found per 1000 atoms (including

hydrogen atoms). The all-atom clashscore for this structure is 7.

All (175) close contacts within the same asymmetric unit are listed below, sorted by their clash magnitude.

Atom-1	Atom-2	Interatomic distance (Å)	Clash overlap (Å)
3:A:931:HIS:HE2	3:A:1444:THR:HG1	1.23	0.81
3:A:876:ARG:NH1	3:A:1312:CYS:SG	2.56	0.78
3:A:1073:PHE:HA	3:A:1083:PHE:HB3	1.71	0.73
3:A:1036:ARG:HG2	3:A:1145:GLU:HG2	1.71	0.72
3:A:916:PHE:HB3	3:A:1385:PRO:HG3	1.77	0.67
3:A:711:CYS:SG	3:A:716:SER:OG	2.53	0.66
3:A:640:ASN:H	3:A:657:THR:HG23	1.62	0.65
1:R:2:G:OP2	1:R:2:G:N2	2.29	0.64
3:A:1481:LEU:HD21	3:A:1545:LYS:HG3	1.79	0.64
3:A:1112:GLN:HB2	3:A:1115:GLU:HB2	1.80	0.63
3:A:1073:PHE:HZ	3:A:1076:GLN:HB2	1.63	0.62
3:A:828:ARG:O	3:A:831:ARG:NH1	2.33	0.61
3:A:974:ARG:NH1	3:A:1298:ASP:O	2.33	0.61
3:A:626:HIS:HB2	3:A:780:ARG:HE	1.64	0.61
1:R:36:U:OP2	3:A:1010:ARG:NH2	2.35	0.60
3:A:876:ARG:NH2	3:A:1308:ASP:O	2.34	0.60
3:A:871:HIS:O	3:A:963:ASN:ND2	2.33	0.59
3:A:689:ARG:NH2	3:A:883:HIS:O	2.35	0.59
3:A:176:VAL:HA	3:A:183:ALA:HA	1.83	0.59
3:A:1040:LYS:NZ	3:A:1137:ASP:OD2	2.35	0.59
3:A:1006:SER:HB2	3:A:1223:LYS:HE3	1.85	0.59
3:A:637:PRO:O	3:A:815:GLY:N	2.31	0.58
3:A:915:PHE:CG	3:A:935:ALA:HB2	2.38	0.58
3:A:1263:ARG:HG3	3:A:1264:GLU:HG3	1.84	0.58
3:A:1421:TRP:HA	3:A:1424:ILE:HG22	1.85	0.58
3:A:350:GLU:HG3	3:A:354:LYS:HE2	1.85	0.57
3:A:853:GLU:O	3:A:1546:LYS:NZ	2.37	0.57
3:A:1168:ASN:O	3:A:1191:ARG:NH2	2.38	0.57
3:A:1185:THR:HG21	3:A:1197:PRO:HB3	1.85	0.56
3:A:1153:PRO:HG2	3:A:1183:ILE:HD12	1.88	0.55
1:R:4:U:N3	3:A:91:ASP:O	2.36	0.54
3:A:894:LYS:HE2	3:A:1504:ARG:HH11	1.73	0.54
1:R:5:G:O6	3:A:95:LYS:NZ	2.32	0.54
3:A:578:GLU:HB3	3:A:610:LEU:HD23	1.89	0.54
3:A:1:MET:SD	3:A:1:MET:N	2.78	0.54
3:A:1476:GLN:HG3	3:A:1500:VAL:HG23	1.90	0.54
3:A:951:ARG:NH2	3:A:1348:PHE:O	2.40	0.54
3:A:7:ILE:HG22	3:A:237:PHE:HB3	1.90	0.53

Continued on next page...

Continued from previous page...

Atom-1	Atom-2	Interatomic distance (Å)	Clash overlap (Å)
3:A:991:LEU:HD13	3:A:1004:LYS:HE3	1.90	0.53
3:A:1299:ARG:HD3	3:A:1303:LYS:HB2	1.91	0.53
3:A:634:MET:HG2	3:A:817:VAL:HA	1.91	0.53
3:A:1081:TYR:OH	3:A:1105:GLN:OE1	2.26	0.52
3:A:1016:LYS:NZ	3:A:1185:THR:O	2.43	0.52
3:A:957:VAL:HG21	3:A:1483:HIS:CD2	2.45	0.52
3:A:741:HIS:HB2	3:A:757:PHE:CZ	2.45	0.51
3:A:733:ASP:N	3:A:733:ASP:OD1	2.43	0.51
3:A:962:THR:HG22	3:A:1470:LEU:HD13	1.93	0.51
3:A:1341:LEU:HD22	3:A:1345:CYS:HB3	1.92	0.51
3:A:803:LEU:HD21	3:A:886:PHE:CZ	2.45	0.51
2:D:5:C:H2'	2:D:6:A:C8	2.46	0.50
3:A:1036:ARG:NH2	3:A:1143:CYS:SG	2.84	0.50
3:A:803:LEU:HD21	3:A:886:PHE:HZ	1.76	0.50
3:A:1003:GLN:HG2	3:A:1227:GLU:HG2	1.92	0.50
1:R:20:U:OP1	3:A:640:ASN:ND2	2.44	0.50
3:A:450:ILE:HG13	3:A:559:MET:HA	1.92	0.50
3:A:541:LEU:HD22	3:A:545:LEU:HD23	1.93	0.50
3:A:576:LYS:HG2	3:A:612:SER:HA	1.94	0.50
3:A:798:ASP:OD2	3:A:1506:ARG:NH2	2.43	0.50
3:A:703:HIS:CE1	3:A:708:CYS:SG	3.05	0.50
3:A:406:VAL:HA	3:A:576:LYS:O	2.11	0.50
3:A:698:LEU:HD13	3:A:710:LEU:HB2	1.93	0.50
3:A:962:THR:HB	3:A:1533:TRP:HZ3	1.77	0.50
3:A:2:THR:HG22	3:A:207:ASP:HA	1.93	0.49
2:D:15:A:C4	3:A:757:PHE:HB3	2.47	0.49
3:A:1038:TRP:HB3	3:A:1141:TRP:HB3	1.95	0.49
3:A:1240:GLU:HA	3:A:1243:ARG:HG2	1.94	0.49
3:A:147:ARG:NH1	3:A:207:ASP:OD2	2.45	0.49
3:A:1399:SER:HB2	3:A:1410:PRO:HG3	1.93	0.49
1:R:32:U:OP2	3:A:978:ARG:HD3	2.13	0.49
3:A:765:SER:HB3	3:A:939:LEU:HD22	1.95	0.48
3:A:1165:VAL:HG21	3:A:1189:LYS:HE3	1.94	0.48
3:A:531:GLN:HE21	3:A:533:ARG:HE	1.59	0.48
3:A:653:THR:HG21	3:A:760:SER:HB2	1.96	0.48
1:R:30:C:N4	3:A:1577:GLU:OE2	2.47	0.48
3:A:887:HIS:HB2	3:A:890:ARG:HD2	1.94	0.48
3:A:447:VAL:HG11	3:A:485:VAL:HG11	1.95	0.48
3:A:1414:PHE:HB2	3:A:1547:LEU:HD13	1.96	0.47
3:A:780:ARG:O	3:A:784:GLU:HG2	2.15	0.47
1:R:16:U:OP1	3:A:564:SER:OG	2.24	0.47

Continued on next page...

Continued from previous page...

Atom-1	Atom-2	Interatomic distance (Å)	Clash overlap (Å)
3:A:22:GLU:HG3	3:A:47:LYS:HE3	1.97	0.47
1:R:19:G:O2'	1:R:20:U:OP2	2.28	0.47
3:A:781:ASP:N	3:A:781:ASP:OD1	2.48	0.47
1:R:23:U:H4'	3:A:968:ILE:HD11	1.97	0.47
3:A:931:HIS:CD2	3:A:1444:THR:HG1	2.29	0.47
3:A:1088:ASN:HB2	3:A:1091:CYS:HB3	1.96	0.47
3:A:1401:PRO:HD2	3:A:1407:PHE:CG	2.50	0.47
3:A:89:LYS:HD3	3:A:131:ARG:CZ	2.46	0.46
3:A:226:ASP:OD2	3:A:227:ARG:NH2	2.48	0.46
3:A:640:ASN:O	3:A:658:PHE:N	2.48	0.46
3:A:1158:PHE:HA	3:A:1208:TYR:O	2.15	0.46
3:A:1260:ARG:HA	3:A:1263:ARG:HG2	1.96	0.46
1:R:31:A:N6	2:D:8:G:O6	2.48	0.46
3:A:287:ASP:HB3	3:A:644:ILE:HD13	1.97	0.46
3:A:401:LEU:HD11	3:A:535:ARG:HG2	1.96	0.46
1:R:32:U:OP2	3:A:1294:ARG:NH2	2.41	0.46
3:A:1086:VAL:HG12	3:A:1090:GLY:HA2	1.97	0.46
3:A:564:SER:HA	3:A:724:ARG:HG2	1.98	0.46
3:A:1201:CYS:SG	3:A:1209:TYR:HB2	2.56	0.46
3:A:401:LEU:HD21	3:A:535:ARG:HD3	1.98	0.46
3:A:431:GLN:HA	3:A:520:GLU:HB2	1.97	0.45
3:A:894:LYS:HD2	3:A:1457:GLU:OE2	2.16	0.45
3:A:48:ASP:OD1	3:A:49:ASN:N	2.49	0.45
3:A:686:ALA:HA	3:A:804:TYR:CZ	2.51	0.45
3:A:960:THR:HG23	3:A:1412:ARG:HD2	1.98	0.45
1:R:13:A:H1'	1:R:14:C:C5	2.52	0.45
3:A:1370:TRP:NE1	3:A:1381:PHE:O	2.50	0.45
3:A:172:VAL:HG22	3:A:188:LYS:HG2	1.98	0.45
3:A:728:LEU:HD22	3:A:774:GLY:HA3	1.99	0.45
3:A:698:LEU:O	3:A:703:HIS:NE2	2.50	0.45
2:D:2:A:H2'	2:D:3:C:C6	2.52	0.44
2:D:15:A:C5	3:A:757:PHE:HB3	2.52	0.44
3:A:1387:MET:SD	3:A:1438:GLN:HG2	2.57	0.44
1:R:25:U:H1'	1:R:26:U:C6	2.53	0.44
3:A:1429:HIS:HB3	3:A:1433:GLY:H	1.83	0.44
3:A:65:VAL:HG13	3:A:221:SER:HB2	2.00	0.44
3:A:1431:THR:OG1	3:A:1561:TYR:O	2.28	0.44
3:A:428:THR:HG21	3:A:520:GLU:HG3	2.00	0.43
3:A:1087:THR:OG1	3:A:1088:ASN:N	2.51	0.43
3:A:1037:MET:SD	3:A:1148:LEU:HD21	2.58	0.43
3:A:1006:SER:HB3	3:A:1221:ASP:HB2	2.00	0.43

Continued on next page...

Continued from previous page...

Atom-1	Atom-2	Interatomic distance (Å)	Clash overlap (Å)
1:R:25:U:H5''	3:A:741:HIS:HA	2.00	0.43
1:R:9:C:C4	3:A:444:ARG:HD2	2.53	0.43
1:R:25:U:C6	3:A:910:THR:HG21	2.54	0.43
3:A:1479:LYS:HA	3:A:1479:LYS:HD2	1.84	0.43
3:A:292:LEU:HA	3:A:298:LEU:HD12	2.01	0.43
3:A:1067:LYS:HD2	3:A:1088:ASN:HD21	1.84	0.43
3:A:747:PHE:CE1	3:A:1410:PRO:HD2	2.54	0.43
3:A:865:HIS:CD2	3:A:1413:LYS:HE2	2.53	0.43
3:A:1460:PHE:HB2	3:A:1463:LEU:HD13	2.00	0.43
3:A:1072:THR:HA	3:A:1115:GLU:O	2.19	0.42
3:A:1416:VAL:HB	3:A:1597:TRP:CZ2	2.54	0.42
1:R:19:G:H1'	1:R:20:U:C6	2.54	0.42
3:A:61:LEU:HD22	3:A:153:LEU:HD11	2.02	0.42
3:A:410:LEU:HD12	3:A:442:LEU:HD21	2.00	0.42
3:A:499:ARG:O	3:A:518:ASN:HA	2.19	0.42
3:A:790:LYS:HG3	3:A:832:LEU:HD11	1.99	0.42
3:A:617:PRO:HG2	3:A:620:TYR:HB2	2.01	0.42
3:A:862:TYR:HB2	3:A:1559:VAL:HG22	2.02	0.42
3:A:1077:LYS:HA	3:A:1077:LYS:HD2	1.79	0.42
3:A:1341:LEU:O	3:A:1346:ARG:NH2	2.51	0.42
3:A:1238:TYR:O	3:A:1242:LEU:HG	2.20	0.42
3:A:740:ASP:N	3:A:740:ASP:OD1	2.53	0.42
3:A:1549:TRP:CH2	3:A:1551:PRO:HA	2.54	0.42
1:R:28:G:C2	3:A:1392:GLU:HG3	2.55	0.42
3:A:191:GLU:OE1	3:A:441:ARG:NH1	2.40	0.42
3:A:1277:PHE:CE2	3:A:1279:HIS:HD2	2.37	0.42
3:A:966:PHE:O	3:A:1311:PRO:HG3	2.20	0.42
3:A:1115:GLU:HG2	3:A:1116:LYS:N	2.35	0.42
3:A:1126:TYR:CZ	3:A:1128:LYS:HD2	2.55	0.42
3:A:1386:VAL:O	3:A:1444:THR:HA	2.20	0.41
3:A:105:SER:OG	3:A:470:ARG:NH2	2.53	0.41
3:A:893:GLY:HA3	3:A:1504:ARG:O	2.20	0.41
3:A:895:ILE:HD11	3:A:1468:LEU:HD11	2.01	0.41
3:A:860:LYS:HB3	3:A:1599:PRO:HB3	2.03	0.41
1:R:9:C:OP2	3:A:444:ARG:NH2	2.52	0.41
2:D:2:A:H2'	2:D:3:C:H6	1.86	0.41
3:A:531:GLN:NE2	3:A:533:ARG:HE	2.19	0.41
3:A:1252:VAL:HG22	3:A:1254:GLU:H	1.85	0.41
3:A:1372:ILE:O	3:A:1384:GLY:N	2.44	0.41
1:R:25:U:O2'	1:R:26:U:OP2	2.33	0.41
3:A:87:PRO:HG3	3:A:112:LYS:O	2.21	0.41

Continued on next page...

Continued from previous page...

Atom-1	Atom-2	Interatomic distance (Å)	Clash overlap (Å)
3:A:288:ALA:O	3:A:291:SER:OG	2.27	0.41
3:A:585:GLU:HG3	3:A:588:ARG:HH22	1.86	0.41
3:A:684:ARG:HG3	3:A:710:LEU:HD11	2.02	0.41
3:A:1002:ILE:HG13	3:A:1230:ILE:HD11	2.03	0.41
3:A:1039:VAL:HG12	3:A:1129:ALA:HB2	2.03	0.41
3:A:1341:LEU:HD23	3:A:1341:LEU:HA	1.90	0.41
3:A:1531:LYS:HE2	3:A:1531:LYS:HB3	1.86	0.40
3:A:803:LEU:HD23	3:A:804:TYR:CE1	2.55	0.40
3:A:904:PRO:HG3	3:A:1371:LEU:HD13	2.03	0.40
3:A:1279:HIS:HA	3:A:1285:GLU:H	1.86	0.40
3:A:1484:LYS:NZ	3:A:1489:LYS:O	2.54	0.40
3:A:411:VAL:HG22	3:A:527:VAL:HG22	2.02	0.40
3:A:980:ASP:OD1	3:A:980:ASP:N	2.55	0.40
1:R:38:A:H61	3:A:1098:HIS:HA	1.87	0.40

There are no symmetry-related clashes.

5.3 Torsion angles [i](#)

5.3.1 Protein backbone [i](#)

In the following table, the Percentiles column shows the percent Ramachandran outliers of the chain as a percentile score with respect to all PDB entries followed by that with respect to all EM entries.

The Analysed column shows the number of residues for which the backbone conformation was analysed, and the total number of residues.

Mol	Chain	Analysed	Favoured	Allowed	Outliers	Percentiles
3	A	1453/1617 (90%)	1428 (98%)	25 (2%)	0	100 100

There are no Ramachandran outliers to report.

5.3.2 Protein sidechains [i](#)

In the following table, the Percentiles column shows the percent sidechain outliers of the chain as a percentile score with respect to all PDB entries followed by that with respect to all EM entries.

The Analysed column shows the number of residues for which the sidechain conformation was analysed, and the total number of residues.

Mol	Chain	Analysed	Rotameric	Outliers	Percentiles
3	A	1280/1406 (91%)	1274 (100%)	6 (0%)	88 93

All (6) residues with a non-rotameric sidechain are listed below:

Mol	Chain	Res	Type
3	A	740	ASP
3	A	962	THR
3	A	1089	ASN
3	A	1217	THR
3	A	1345	CYS
3	A	1350	THR

Sometimes sidechains can be flipped to improve hydrogen bonding and reduce clashes. All (8) such sidechains are listed below:

Mol	Chain	Res	Type
3	A	306	HIS
3	A	531	GLN
3	A	626	HIS
3	A	1089	ASN
3	A	1246	ASN
3	A	1279	HIS
3	A	1476	GLN
3	A	1483	HIS

5.3.3 RNA [i](#)

Mol	Chain	Analysed	Backbone Outliers	Pucker Outliers
1	R	38/39 (97%)	13 (34%)	0
2	D	22/23 (95%)	4 (18%)	0
All	All	60/62 (96%)	17 (28%)	0

All (17) RNA backbone outliers are listed below:

Mol	Chain	Res	Type
1	R	3	A
1	R	4	U
1	R	7	C
1	R	10	G
1	R	13	A
1	R	18	U

Continued on next page...

Continued from previous page...

Mol	Chain	Res	Type
1	R	19	G
1	R	25	U
1	R	27	C
1	R	28	G
1	R	29	A
1	R	34	G
1	R	38	A
2	D	2	A
2	D	11	G
2	D	15	A
2	D	21	A

There are no RNA pucker outliers to report.

5.4 Non-standard residues in protein, DNA, RNA chains [i](#)

There are no non-standard protein/DNA/RNA residues in this entry.

5.5 Carbohydrates [i](#)

There are no monosaccharides in this entry.

5.6 Ligand geometry [i](#)

Of 4 ligands modelled in this entry, 4 are monoatomic - leaving 0 for Mogul analysis.

There are no bond length outliers.

There are no bond angle outliers.

There are no chirality outliers.

There are no torsion outliers.

There are no ring outliers.

No monomer is involved in short contacts.

5.7 Other polymers [i](#)

There are no such residues in this entry.

5.8 Polymer linkage issues

There are no chain breaks in this entry.

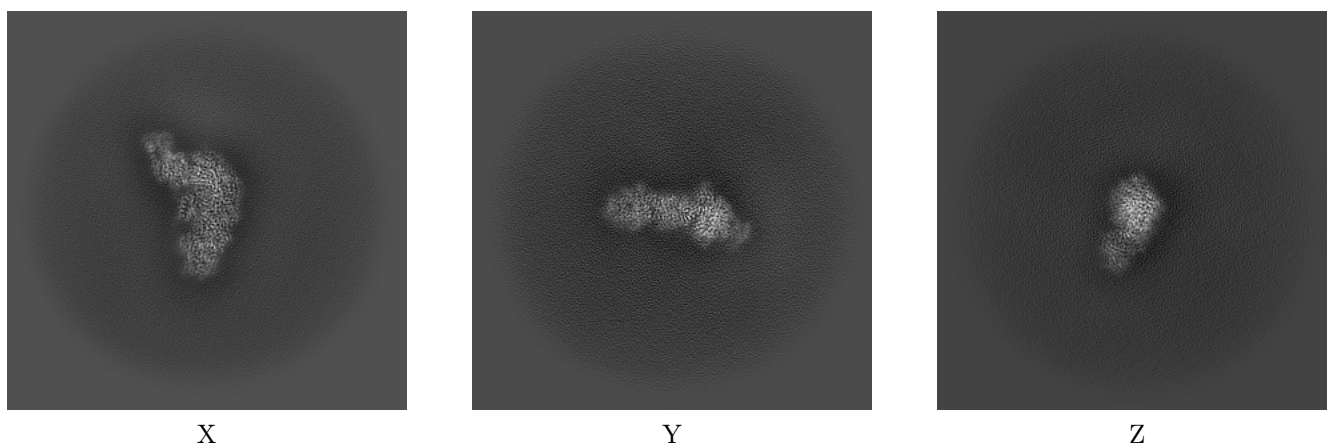
6 Map visualisation [i](#)

This section contains visualisations of the EMDB entry EMD-32385. These allow visual inspection of the internal detail of the map and identification of artifacts.

No raw map or half-maps were deposited for this entry and therefore no images, graphs, etc. pertaining to the raw map can be shown.

6.1 Orthogonal projections [i](#)

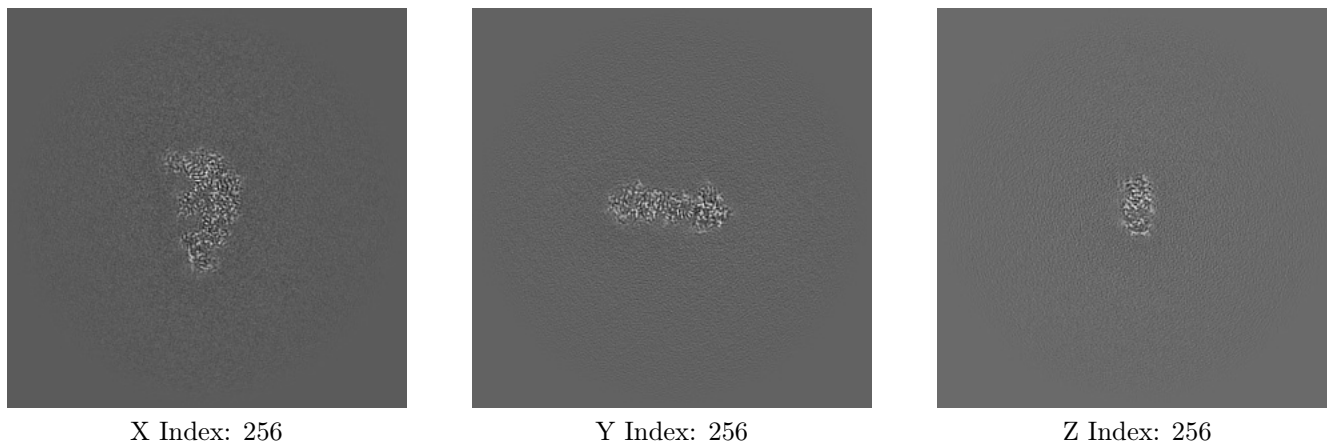
6.1.1 Primary map



The images above show the map projected in three orthogonal directions.

6.2 Central slices [i](#)

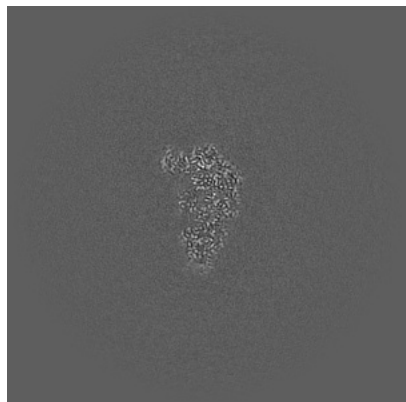
6.2.1 Primary map



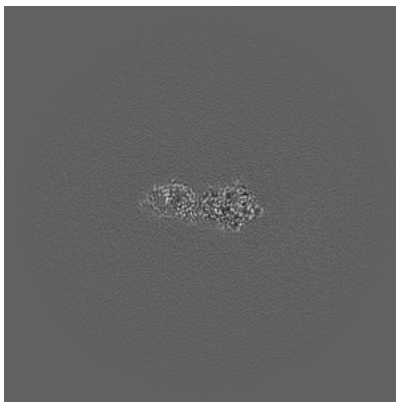
The images above show central slices of the map in three orthogonal directions.

6.3 Largest variance slices [i](#)

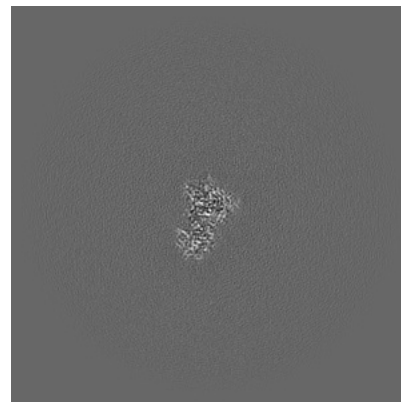
6.3.1 Primary map



X Index: 251



Y Index: 265



Z Index: 303

The images above show the largest variance slices of the map in three orthogonal directions.

6.4 Orthogonal surface views [i](#)

6.4.1 Primary map



X



Y



Z

The images above show the 3D surface view of the map at the recommended contour level 1.0. These images, in conjunction with the slice images, may facilitate assessment of whether an appropriate contour level has been provided.

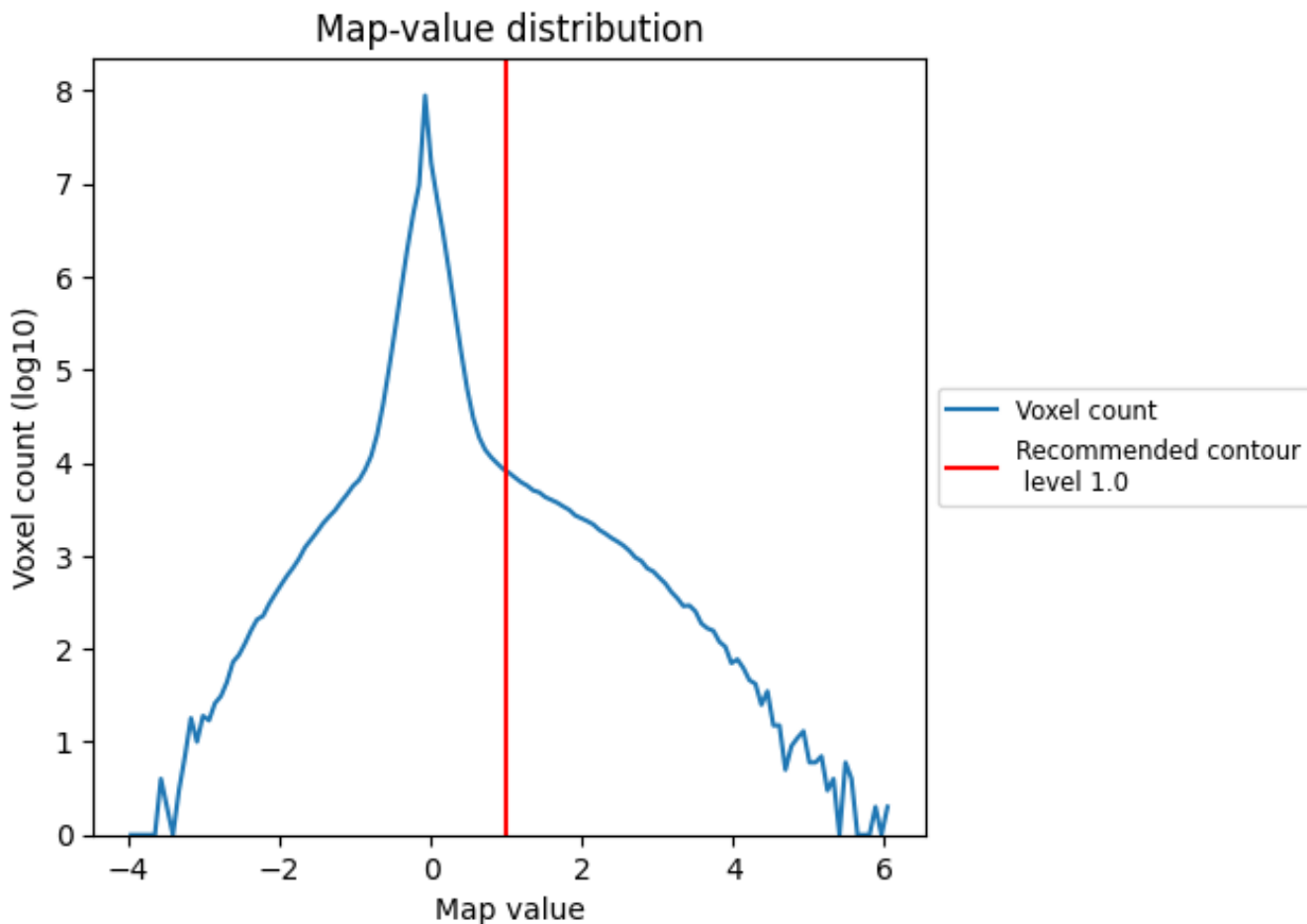
6.5 Mask visualisation

This section was not generated. No masks/segmentation were deposited.

7 Map analysis [i](#)

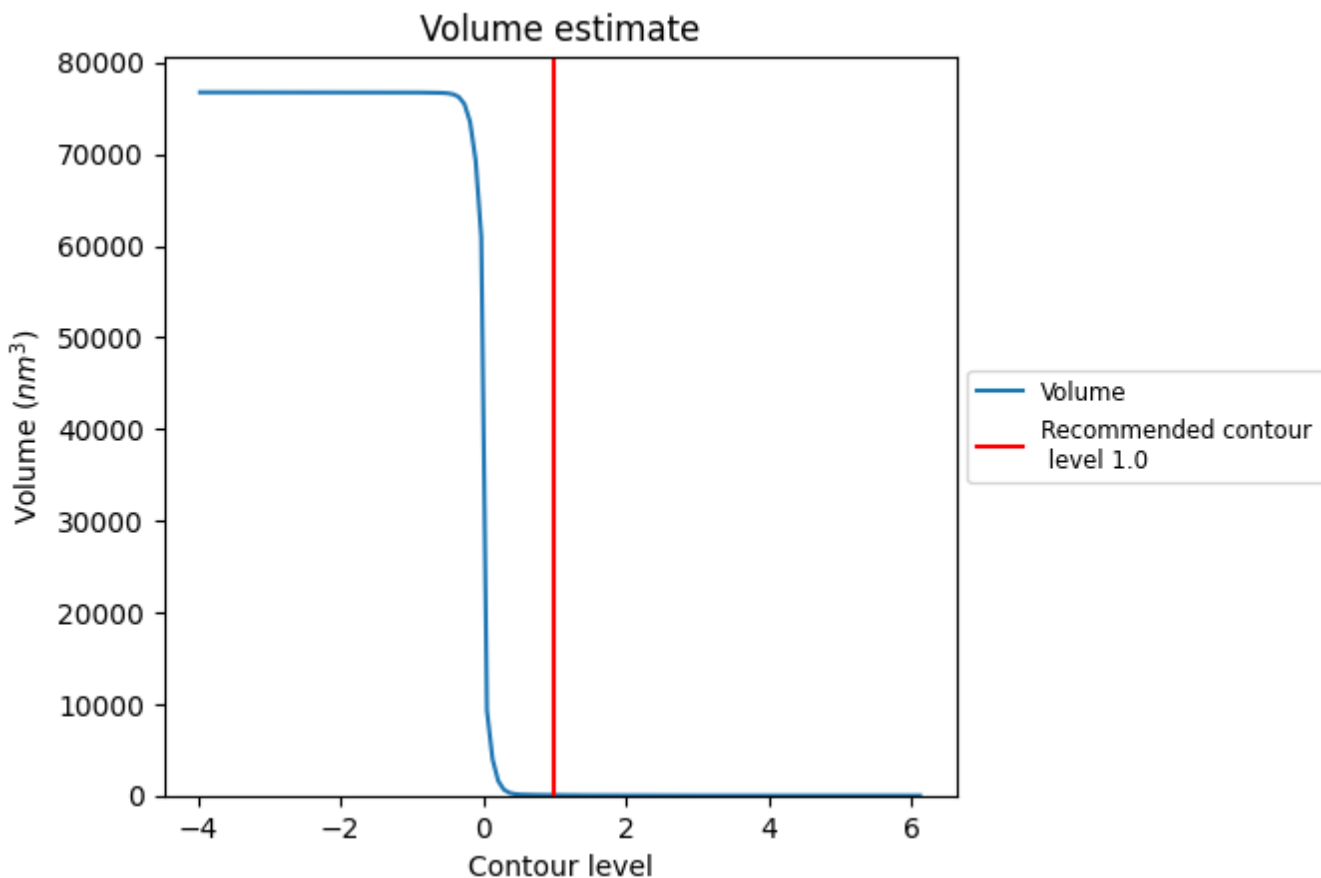
This section contains the results of statistical analysis of the map.

7.1 Map-value distribution [i](#)



The map-value distribution is plotted in 128 intervals along the x-axis. The y-axis is logarithmic. A spike in this graph at zero usually indicates that the volume has been masked.

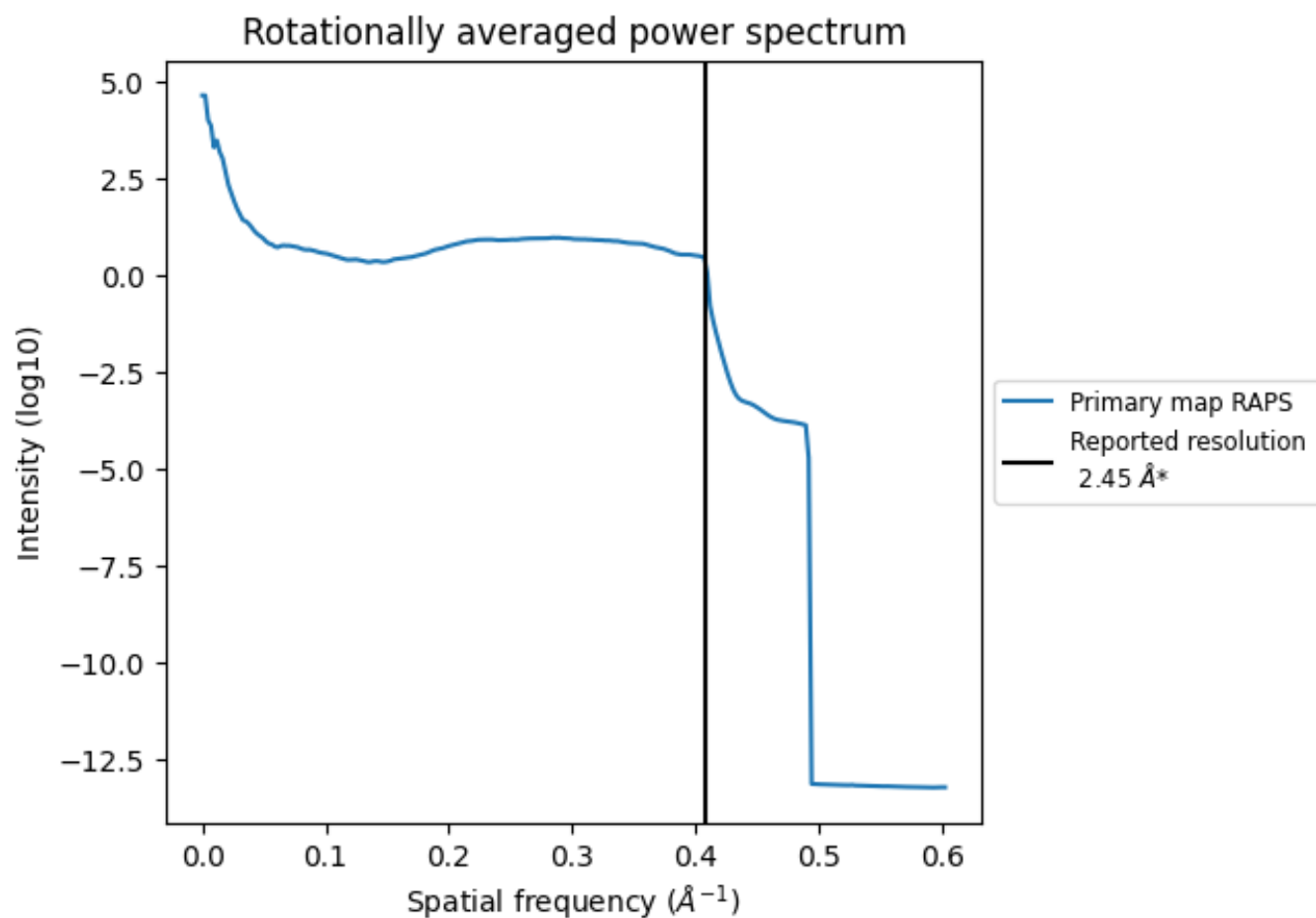
7.2 Volume estimate [i](#)



The volume at the recommended contour level is 48 nm³; this corresponds to an approximate mass of 44 kDa.

The volume estimate graph shows how the enclosed volume varies with the contour level. The recommended contour level is shown as a vertical line and the intersection between the line and the curve gives the volume of the enclosed surface at the given level.

7.3 Rotationally averaged power spectrum [i](#)



*Reported resolution corresponds to spatial frequency of 0.408 Å⁻¹

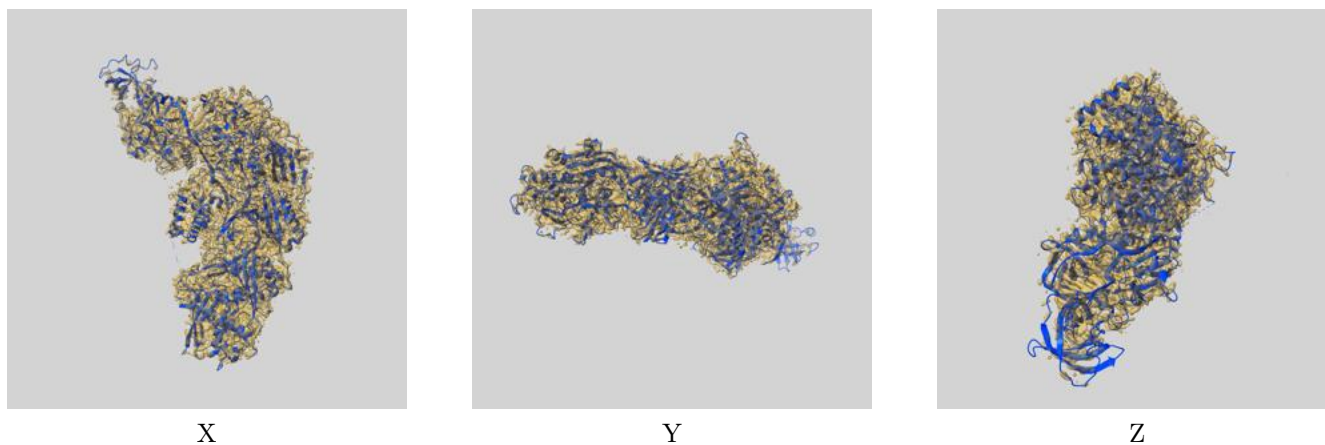
8 Fourier-Shell correlation

This section was not generated. No FSC curve or half-maps provided.

9 Map-model fit [i](#)

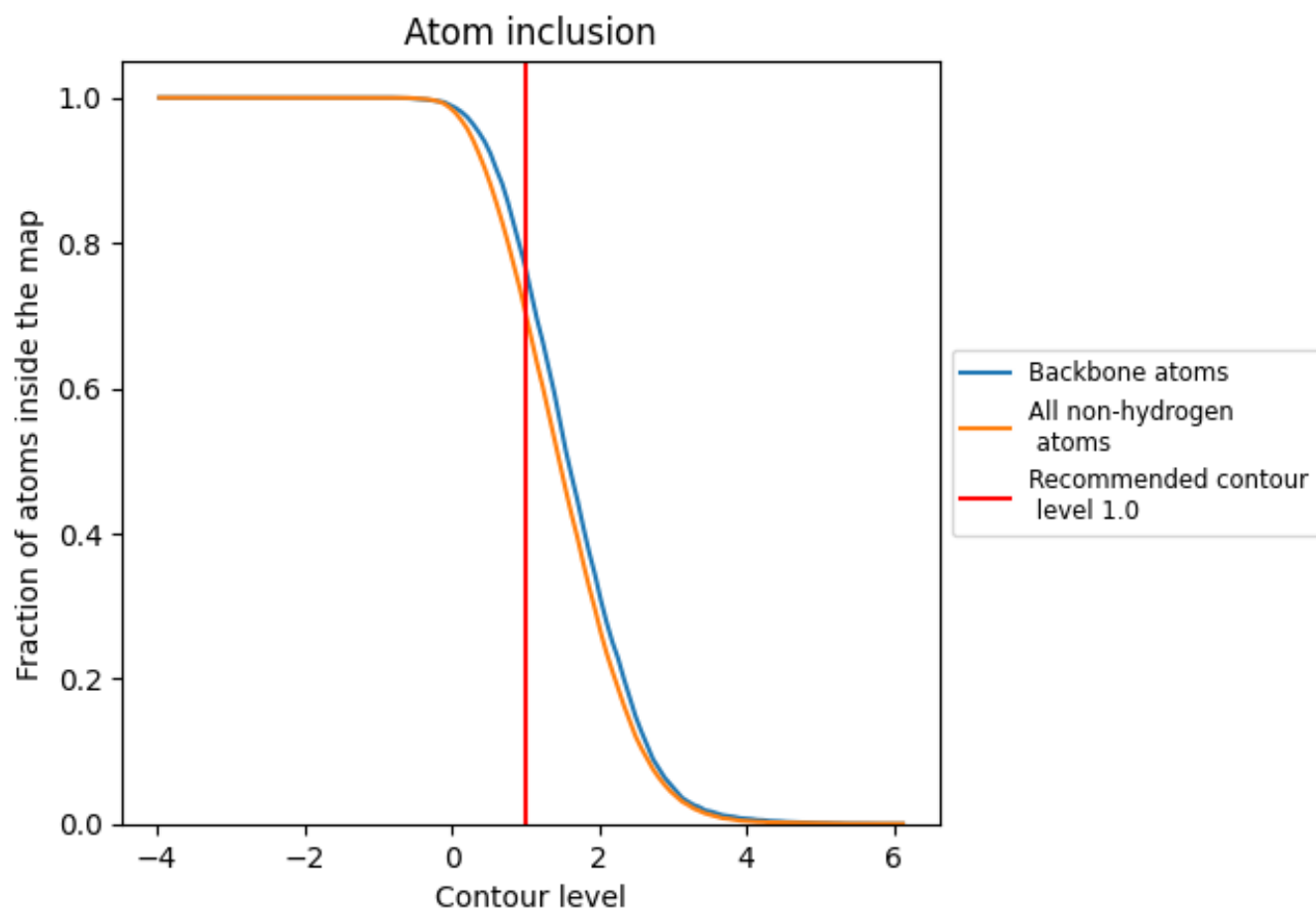
This section contains information regarding the fit between EMDB map EMD-32385 and PDB model 7WAH. Per-residue inclusion information can be found in section [3](#) on page [5](#).

9.1 Map-model overlay [i](#)



The images above show the 3D surface view of the map at the recommended contour level 1.0 at 50% transparency in yellow overlaid with a ribbon representation of the model coloured in blue. These images allow for the visual assessment of the quality of fit between the atomic model and the map.

9.2 Atom inclusion [i](#)



At the recommended contour level, 77% of all backbone atoms, 70% of all non-hydrogen atoms, are inside the map.