



wwPDB EM Validation Summary Report ⓘ

Dec 19, 2022 – 02:20 PM JST

PDB ID : 7WCP
EMDB ID : EMD-32427
Title : CryoEM structure of the SARS-CoV-2 S6P(B.1.617.2) in complex with SWC11 Fab
Authors : Du, S.; Xiao, J.Y.
Deposited on : 2021-12-20
Resolution : 3.01 Å(reported)

This is a wwPDB EM Validation Summary Report for a publicly released PDB entry.

We welcome your comments at validation@mail.wwpdb.org

A user guide is available at

<https://www.wwpdb.org/validation/2017/EMValidationReportHelp>

with specific help available everywhere you see the ⓘ symbol.

The types of validation reports are described at

<http://www.wwpdb.org/validation/2017/FAQs#types>.

The following versions of software and data (see [references ⓘ](#)) were used in the production of this report:

EMDB validation analysis : 0.0.1.dev43
MolProbity : 4.02b-467
Percentile statistics : 20191225.v01 (using entries in the PDB archive December 25th 2019)
MapQ : 1.9.9
Ideal geometry (proteins) : Engh & Huber (2001)
Ideal geometry (DNA, RNA) : Parkinson et al. (1996)
Validation Pipeline (wwPDB-VP) : 2.31.3

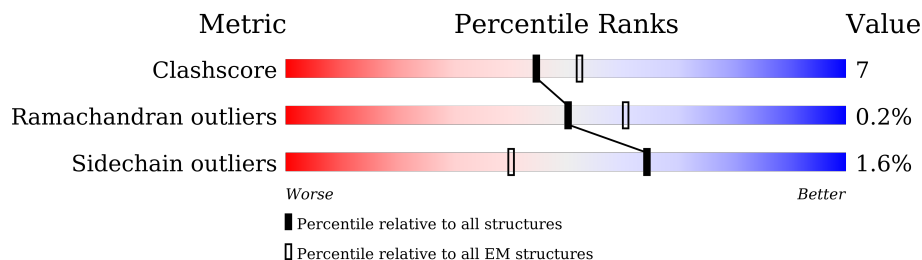
1 Overall quality at a glance

The following experimental techniques were used to determine the structure:

ELECTRON MICROSCOPY

The reported resolution of this entry is 3.01 Å.

Percentile scores (ranging between 0-100) for global validation metrics of the entry are shown in the following graphic. The table shows the number of entries on which the scores are based.




Metric	Whole archive (#Entries)	EM structures (#Entries)
Clashscore	158937	4297
Ramachandran outliers	154571	4023
Sidechain outliers	154315	3826

The table below summarises the geometric issues observed across the polymeric chains and their fit to the map. The red, orange, yellow and green segments of the bar indicate the fraction of residues that contain outliers for ≥ 3 , 2, 1 and 0 types of geometric quality criteria respectively. A grey segment represents the fraction of residues that are not modelled. The numeric value for each fraction is indicated below the corresponding segment, with a dot representing fractions $\leq 5\%$. The upper red bar (where present) indicates the fraction of residues that have poor fit to the EM map (all-atom inclusion $< 40\%$). The numeric value is given above the bar.

Mol	Chain	Length	Quality of chain
1	A	1286	
1	B	1286	
1	C	1286	
2	D	222	
2	H	222	
2	M	222	
3	E	109	
3	L	109	

Continued on next page...

Continued from previous page...

Mol	Chain	Length	Quality of chain
3	N	109	 <p>90% 67% 32%</p>

2 Entry composition i

There are 3 unique types of molecules in this entry. The entry contains 28328 atoms, of which 0 are hydrogens and 0 are deuteriums.

In the tables below, the AltConf column contains the number of residues with at least one atom in alternate conformation and the Trace column contains the number of residues modelled with at most 2 atoms.

- Molecule 1 is a protein called Surface glycoprotein.

Mol	Chain	Residues	Atoms					AltConf	Trace
			Total	C	N	O	S		
1	A	1002	7736	4933	1295	1473	35	0	0
1	B	991	7653	4881	1271	1466	35	0	0
1	C	999	7683	4902	1276	1470	35	0	0

There are 267 discrepancies between the modelled and reference sequences:

Chain	Residue	Modelled	Actual	Comment	Reference
A	682	GLY	ARG	conflict	UNP A0A8B1VBI1
A	683	SER	ARG	conflict	UNP A0A8B1VBI1
A	685	SER	ARG	conflict	UNP A0A8B1VBI1
A	817	PRO	PHE	conflict	UNP A0A8B1VBI1
A	892	PRO	ALA	conflict	UNP A0A8B1VBI1
A	899	PRO	ALA	conflict	UNP A0A8B1VBI1
A	942	PRO	ALA	conflict	UNP A0A8B1VBI1
A	986	PRO	LYS	conflict	UNP A0A8B1VBI1
A	987	PRO	VAL	conflict	UNP A0A8B1VBI1
A	1209	GLY	-	expression tag	UNP A0A8B1VBI1
A	1210	SER	-	expression tag	UNP A0A8B1VBI1
A	1211	GLY	-	expression tag	UNP A0A8B1VBI1
A	1212	TYR	-	expression tag	UNP A0A8B1VBI1
A	1213	ILE	-	expression tag	UNP A0A8B1VBI1
A	1214	PRO	-	expression tag	UNP A0A8B1VBI1
A	1215	GLU	-	expression tag	UNP A0A8B1VBI1
A	1216	ALA	-	expression tag	UNP A0A8B1VBI1
A	1217	PRO	-	expression tag	UNP A0A8B1VBI1
A	1218	ARG	-	expression tag	UNP A0A8B1VBI1
A	1219	ASP	-	expression tag	UNP A0A8B1VBI1
A	1220	GLY	-	expression tag	UNP A0A8B1VBI1
A	1221	GLN	-	expression tag	UNP A0A8B1VBI1
A	1222	ALA	-	expression tag	UNP A0A8B1VBI1
A	1223	TYR	-	expression tag	UNP A0A8B1VBI1

Continued on next page...

Continued from previous page...

Chain	Residue	Modelled	Actual	Comment	Reference
A	1224	VAL	-	expression tag	UNP A0A8B1VBI1
A	1225	ARG	-	expression tag	UNP A0A8B1VBI1
A	1226	LYS	-	expression tag	UNP A0A8B1VBI1
A	1227	ASP	-	expression tag	UNP A0A8B1VBI1
A	1228	GLY	-	expression tag	UNP A0A8B1VBI1
A	1229	GLU	-	expression tag	UNP A0A8B1VBI1
A	1230	TRP	-	expression tag	UNP A0A8B1VBI1
A	1231	VAL	-	expression tag	UNP A0A8B1VBI1
A	1232	LEU	-	expression tag	UNP A0A8B1VBI1
A	1233	LEU	-	expression tag	UNP A0A8B1VBI1
A	1234	SER	-	expression tag	UNP A0A8B1VBI1
A	1235	THR	-	expression tag	UNP A0A8B1VBI1
A	1236	PHE	-	expression tag	UNP A0A8B1VBI1
A	1237	LEU	-	expression tag	UNP A0A8B1VBI1
A	1238	GLY	-	expression tag	UNP A0A8B1VBI1
A	1239	ARG	-	expression tag	UNP A0A8B1VBI1
A	1240	SER	-	expression tag	UNP A0A8B1VBI1
A	1241	LEU	-	expression tag	UNP A0A8B1VBI1
A	1242	GLU	-	expression tag	UNP A0A8B1VBI1
A	1243	VAL	-	expression tag	UNP A0A8B1VBI1
A	1244	LEU	-	expression tag	UNP A0A8B1VBI1
A	1245	PHE	-	expression tag	UNP A0A8B1VBI1
A	1246	GLN	-	expression tag	UNP A0A8B1VBI1
A	1247	GLY	-	expression tag	UNP A0A8B1VBI1
A	1248	PRO	-	expression tag	UNP A0A8B1VBI1
A	1249	GLY	-	expression tag	UNP A0A8B1VBI1
A	1250	HIS	-	expression tag	UNP A0A8B1VBI1
A	1251	HIS	-	expression tag	UNP A0A8B1VBI1
A	1252	HIS	-	expression tag	UNP A0A8B1VBI1
A	1253	HIS	-	expression tag	UNP A0A8B1VBI1
A	1254	HIS	-	expression tag	UNP A0A8B1VBI1
A	1255	HIS	-	expression tag	UNP A0A8B1VBI1
A	1256	HIS	-	expression tag	UNP A0A8B1VBI1
A	1257	HIS	-	expression tag	UNP A0A8B1VBI1
A	1258	SER	-	expression tag	UNP A0A8B1VBI1
A	1259	ALA	-	expression tag	UNP A0A8B1VBI1
A	1260	TRP	-	expression tag	UNP A0A8B1VBI1
A	1261	SER	-	expression tag	UNP A0A8B1VBI1
A	1262	HIS	-	expression tag	UNP A0A8B1VBI1
A	1263	PRO	-	expression tag	UNP A0A8B1VBI1
A	1264	GLN	-	expression tag	UNP A0A8B1VBI1
A	1265	PHE	-	expression tag	UNP A0A8B1VBI1

Continued on next page...

Continued from previous page...

Chain	Residue	Modelled	Actual	Comment	Reference
A	1266	GLU	-	expression tag	UNP A0A8B1VBI1
A	1267	LYS	-	expression tag	UNP A0A8B1VBI1
A	1268	GLY	-	expression tag	UNP A0A8B1VBI1
A	1269	GLY	-	expression tag	UNP A0A8B1VBI1
A	1270	GLY	-	expression tag	UNP A0A8B1VBI1
A	1271	SER	-	expression tag	UNP A0A8B1VBI1
A	1272	GLY	-	expression tag	UNP A0A8B1VBI1
A	1273	GLY	-	expression tag	UNP A0A8B1VBI1
A	1274	GLY	-	expression tag	UNP A0A8B1VBI1
A	1275	GLY	-	expression tag	UNP A0A8B1VBI1
A	1276	SER	-	expression tag	UNP A0A8B1VBI1
A	1277	GLY	-	expression tag	UNP A0A8B1VBI1
A	1278	GLY	-	expression tag	UNP A0A8B1VBI1
A	1279	SER	-	expression tag	UNP A0A8B1VBI1
A	1280	ALA	-	expression tag	UNP A0A8B1VBI1
A	1281	TRP	-	expression tag	UNP A0A8B1VBI1
A	1282	SER	-	expression tag	UNP A0A8B1VBI1
A	1283	HIS	-	expression tag	UNP A0A8B1VBI1
A	1284	PRO	-	expression tag	UNP A0A8B1VBI1
A	1285	GLN	-	expression tag	UNP A0A8B1VBI1
A	1286	PHE	-	expression tag	UNP A0A8B1VBI1
A	1287	GLU	-	expression tag	UNP A0A8B1VBI1
A	1288	LYS	-	expression tag	UNP A0A8B1VBI1
B	682	GLY	ARG	conflict	UNP A0A8B1VBI1
B	683	SER	ARG	conflict	UNP A0A8B1VBI1
B	685	SER	ARG	conflict	UNP A0A8B1VBI1
B	817	PRO	PHE	conflict	UNP A0A8B1VBI1
B	892	PRO	ALA	conflict	UNP A0A8B1VBI1
B	899	PRO	ALA	conflict	UNP A0A8B1VBI1
B	942	PRO	ALA	conflict	UNP A0A8B1VBI1
B	986	PRO	LYS	conflict	UNP A0A8B1VBI1
B	987	PRO	VAL	conflict	UNP A0A8B1VBI1
B	1209	GLY	-	expression tag	UNP A0A8B1VBI1
B	1210	SER	-	expression tag	UNP A0A8B1VBI1
B	1211	GLY	-	expression tag	UNP A0A8B1VBI1
B	1212	TYR	-	expression tag	UNP A0A8B1VBI1
B	1213	ILE	-	expression tag	UNP A0A8B1VBI1
B	1214	PRO	-	expression tag	UNP A0A8B1VBI1
B	1215	GLU	-	expression tag	UNP A0A8B1VBI1
B	1216	ALA	-	expression tag	UNP A0A8B1VBI1
B	1217	PRO	-	expression tag	UNP A0A8B1VBI1
B	1218	ARG	-	expression tag	UNP A0A8B1VBI1

Continued on next page...

Continued from previous page...

Chain	Residue	Modelled	Actual	Comment	Reference
B	1219	ASP	-	expression tag	UNP A0A8B1VBI1
B	1220	GLY	-	expression tag	UNP A0A8B1VBI1
B	1221	GLN	-	expression tag	UNP A0A8B1VBI1
B	1222	ALA	-	expression tag	UNP A0A8B1VBI1
B	1223	TYR	-	expression tag	UNP A0A8B1VBI1
B	1224	VAL	-	expression tag	UNP A0A8B1VBI1
B	1225	ARG	-	expression tag	UNP A0A8B1VBI1
B	1226	LYS	-	expression tag	UNP A0A8B1VBI1
B	1227	ASP	-	expression tag	UNP A0A8B1VBI1
B	1228	GLY	-	expression tag	UNP A0A8B1VBI1
B	1229	GLU	-	expression tag	UNP A0A8B1VBI1
B	1230	TRP	-	expression tag	UNP A0A8B1VBI1
B	1231	VAL	-	expression tag	UNP A0A8B1VBI1
B	1232	LEU	-	expression tag	UNP A0A8B1VBI1
B	1233	LEU	-	expression tag	UNP A0A8B1VBI1
B	1234	SER	-	expression tag	UNP A0A8B1VBI1
B	1235	THR	-	expression tag	UNP A0A8B1VBI1
B	1236	PHE	-	expression tag	UNP A0A8B1VBI1
B	1237	LEU	-	expression tag	UNP A0A8B1VBI1
B	1238	GLY	-	expression tag	UNP A0A8B1VBI1
B	1239	ARG	-	expression tag	UNP A0A8B1VBI1
B	1240	SER	-	expression tag	UNP A0A8B1VBI1
B	1241	LEU	-	expression tag	UNP A0A8B1VBI1
B	1242	GLU	-	expression tag	UNP A0A8B1VBI1
B	1243	VAL	-	expression tag	UNP A0A8B1VBI1
B	1244	LEU	-	expression tag	UNP A0A8B1VBI1
B	1245	PHE	-	expression tag	UNP A0A8B1VBI1
B	1246	GLN	-	expression tag	UNP A0A8B1VBI1
B	1247	GLY	-	expression tag	UNP A0A8B1VBI1
B	1248	PRO	-	expression tag	UNP A0A8B1VBI1
B	1249	GLY	-	expression tag	UNP A0A8B1VBI1
B	1250	HIS	-	expression tag	UNP A0A8B1VBI1
B	1251	HIS	-	expression tag	UNP A0A8B1VBI1
B	1252	HIS	-	expression tag	UNP A0A8B1VBI1
B	1253	HIS	-	expression tag	UNP A0A8B1VBI1
B	1254	HIS	-	expression tag	UNP A0A8B1VBI1
B	1255	HIS	-	expression tag	UNP A0A8B1VBI1
B	1256	HIS	-	expression tag	UNP A0A8B1VBI1
B	1257	HIS	-	expression tag	UNP A0A8B1VBI1
B	1258	SER	-	expression tag	UNP A0A8B1VBI1
B	1259	ALA	-	expression tag	UNP A0A8B1VBI1
B	1260	TRP	-	expression tag	UNP A0A8B1VBI1

Continued on next page...

Continued from previous page...

Chain	Residue	Modelled	Actual	Comment	Reference
B	1261	SER	-	expression tag	UNP A0A8B1VBI1
B	1262	HIS	-	expression tag	UNP A0A8B1VBI1
B	1263	PRO	-	expression tag	UNP A0A8B1VBI1
B	1264	GLN	-	expression tag	UNP A0A8B1VBI1
B	1265	PHE	-	expression tag	UNP A0A8B1VBI1
B	1266	GLU	-	expression tag	UNP A0A8B1VBI1
B	1267	LYS	-	expression tag	UNP A0A8B1VBI1
B	1268	GLY	-	expression tag	UNP A0A8B1VBI1
B	1269	GLY	-	expression tag	UNP A0A8B1VBI1
B	1270	GLY	-	expression tag	UNP A0A8B1VBI1
B	1271	SER	-	expression tag	UNP A0A8B1VBI1
B	1272	GLY	-	expression tag	UNP A0A8B1VBI1
B	1273	GLY	-	expression tag	UNP A0A8B1VBI1
B	1274	GLY	-	expression tag	UNP A0A8B1VBI1
B	1275	GLY	-	expression tag	UNP A0A8B1VBI1
B	1276	SER	-	expression tag	UNP A0A8B1VBI1
B	1277	GLY	-	expression tag	UNP A0A8B1VBI1
B	1278	GLY	-	expression tag	UNP A0A8B1VBI1
B	1279	SER	-	expression tag	UNP A0A8B1VBI1
B	1280	ALA	-	expression tag	UNP A0A8B1VBI1
B	1281	TRP	-	expression tag	UNP A0A8B1VBI1
B	1282	SER	-	expression tag	UNP A0A8B1VBI1
B	1283	HIS	-	expression tag	UNP A0A8B1VBI1
B	1284	PRO	-	expression tag	UNP A0A8B1VBI1
B	1285	GLN	-	expression tag	UNP A0A8B1VBI1
B	1286	PHE	-	expression tag	UNP A0A8B1VBI1
B	1287	GLU	-	expression tag	UNP A0A8B1VBI1
B	1288	LYS	-	expression tag	UNP A0A8B1VBI1
C	682	GLY	ARG	conflict	UNP A0A8B1VBI1
C	683	SER	ARG	conflict	UNP A0A8B1VBI1
C	685	SER	ARG	conflict	UNP A0A8B1VBI1
C	817	PRO	PHE	conflict	UNP A0A8B1VBI1
C	892	PRO	ALA	conflict	UNP A0A8B1VBI1
C	899	PRO	ALA	conflict	UNP A0A8B1VBI1
C	942	PRO	ALA	conflict	UNP A0A8B1VBI1
C	986	PRO	LYS	conflict	UNP A0A8B1VBI1
C	987	PRO	VAL	conflict	UNP A0A8B1VBI1
C	1209	GLY	-	expression tag	UNP A0A8B1VBI1
C	1210	SER	-	expression tag	UNP A0A8B1VBI1
C	1211	GLY	-	expression tag	UNP A0A8B1VBI1
C	1212	TYR	-	expression tag	UNP A0A8B1VBI1
C	1213	ILE	-	expression tag	UNP A0A8B1VBI1

Continued on next page...

Continued from previous page...

Chain	Residue	Modelled	Actual	Comment	Reference
C	1214	PRO	-	expression tag	UNP A0A8B1VBI1
C	1215	GLU	-	expression tag	UNP A0A8B1VBI1
C	1216	ALA	-	expression tag	UNP A0A8B1VBI1
C	1217	PRO	-	expression tag	UNP A0A8B1VBI1
C	1218	ARG	-	expression tag	UNP A0A8B1VBI1
C	1219	ASP	-	expression tag	UNP A0A8B1VBI1
C	1220	GLY	-	expression tag	UNP A0A8B1VBI1
C	1221	GLN	-	expression tag	UNP A0A8B1VBI1
C	1222	ALA	-	expression tag	UNP A0A8B1VBI1
C	1223	TYR	-	expression tag	UNP A0A8B1VBI1
C	1224	VAL	-	expression tag	UNP A0A8B1VBI1
C	1225	ARG	-	expression tag	UNP A0A8B1VBI1
C	1226	LYS	-	expression tag	UNP A0A8B1VBI1
C	1227	ASP	-	expression tag	UNP A0A8B1VBI1
C	1228	GLY	-	expression tag	UNP A0A8B1VBI1
C	1229	GLU	-	expression tag	UNP A0A8B1VBI1
C	1230	TRP	-	expression tag	UNP A0A8B1VBI1
C	1231	VAL	-	expression tag	UNP A0A8B1VBI1
C	1232	LEU	-	expression tag	UNP A0A8B1VBI1
C	1233	LEU	-	expression tag	UNP A0A8B1VBI1
C	1234	SER	-	expression tag	UNP A0A8B1VBI1
C	1235	THR	-	expression tag	UNP A0A8B1VBI1
C	1236	PHE	-	expression tag	UNP A0A8B1VBI1
C	1237	LEU	-	expression tag	UNP A0A8B1VBI1
C	1238	GLY	-	expression tag	UNP A0A8B1VBI1
C	1239	ARG	-	expression tag	UNP A0A8B1VBI1
C	1240	SER	-	expression tag	UNP A0A8B1VBI1
C	1241	LEU	-	expression tag	UNP A0A8B1VBI1
C	1242	GLU	-	expression tag	UNP A0A8B1VBI1
C	1243	VAL	-	expression tag	UNP A0A8B1VBI1
C	1244	LEU	-	expression tag	UNP A0A8B1VBI1
C	1245	PHE	-	expression tag	UNP A0A8B1VBI1
C	1246	GLN	-	expression tag	UNP A0A8B1VBI1
C	1247	GLY	-	expression tag	UNP A0A8B1VBI1
C	1248	PRO	-	expression tag	UNP A0A8B1VBI1
C	1249	GLY	-	expression tag	UNP A0A8B1VBI1
C	1250	HIS	-	expression tag	UNP A0A8B1VBI1
C	1251	HIS	-	expression tag	UNP A0A8B1VBI1
C	1252	HIS	-	expression tag	UNP A0A8B1VBI1
C	1253	HIS	-	expression tag	UNP A0A8B1VBI1
C	1254	HIS	-	expression tag	UNP A0A8B1VBI1
C	1255	HIS	-	expression tag	UNP A0A8B1VBI1

Continued on next page...

Continued from previous page...

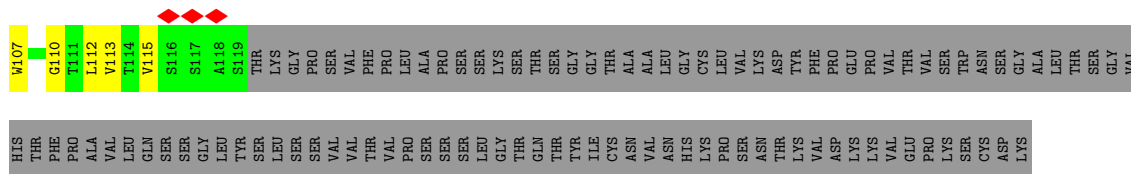
Chain	Residue	Modelled	Actual	Comment	Reference
C	1256	HIS	-	expression tag	UNP A0A8B1VBI1
C	1257	HIS	-	expression tag	UNP A0A8B1VBI1
C	1258	SER	-	expression tag	UNP A0A8B1VBI1
C	1259	ALA	-	expression tag	UNP A0A8B1VBI1
C	1260	TRP	-	expression tag	UNP A0A8B1VBI1
C	1261	SER	-	expression tag	UNP A0A8B1VBI1
C	1262	HIS	-	expression tag	UNP A0A8B1VBI1
C	1263	PRO	-	expression tag	UNP A0A8B1VBI1
C	1264	GLN	-	expression tag	UNP A0A8B1VBI1
C	1265	PHE	-	expression tag	UNP A0A8B1VBI1
C	1266	GLU	-	expression tag	UNP A0A8B1VBI1
C	1267	LYS	-	expression tag	UNP A0A8B1VBI1
C	1268	GLY	-	expression tag	UNP A0A8B1VBI1
C	1269	GLY	-	expression tag	UNP A0A8B1VBI1
C	1270	GLY	-	expression tag	UNP A0A8B1VBI1
C	1271	SER	-	expression tag	UNP A0A8B1VBI1
C	1272	GLY	-	expression tag	UNP A0A8B1VBI1
C	1273	GLY	-	expression tag	UNP A0A8B1VBI1
C	1274	GLY	-	expression tag	UNP A0A8B1VBI1
C	1275	GLY	-	expression tag	UNP A0A8B1VBI1
C	1276	SER	-	expression tag	UNP A0A8B1VBI1
C	1277	GLY	-	expression tag	UNP A0A8B1VBI1
C	1278	GLY	-	expression tag	UNP A0A8B1VBI1
C	1279	SER	-	expression tag	UNP A0A8B1VBI1
C	1280	ALA	-	expression tag	UNP A0A8B1VBI1
C	1281	TRP	-	expression tag	UNP A0A8B1VBI1
C	1282	SER	-	expression tag	UNP A0A8B1VBI1
C	1283	HIS	-	expression tag	UNP A0A8B1VBI1
C	1284	PRO	-	expression tag	UNP A0A8B1VBI1
C	1285	GLN	-	expression tag	UNP A0A8B1VBI1
C	1286	PHE	-	expression tag	UNP A0A8B1VBI1
C	1287	GLU	-	expression tag	UNP A0A8B1VBI1
C	1288	LYS	-	expression tag	UNP A0A8B1VBI1

- Molecule 2 is a protein called SWC11H.

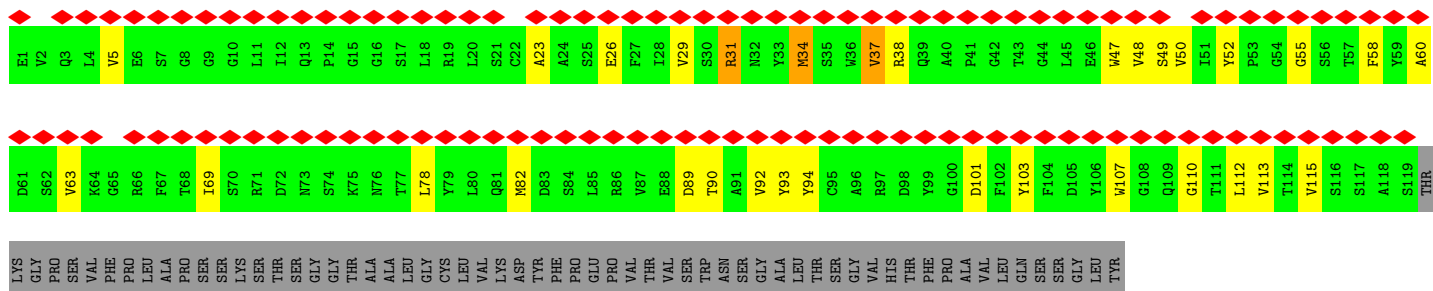
Mol	Chain	Residues	Atoms				AltConf	Trace	
2	D	119	Total	C	N	O	S	0	0
			926	587	153	182	4		
2	H	119	Total	C	N	O	S	0	0
			926	587	153	182	4		
2	M	119	Total	C	N	O	S	0	0
			926	587	153	182	4		

- Molecule 3 is a protein called SWC11L.

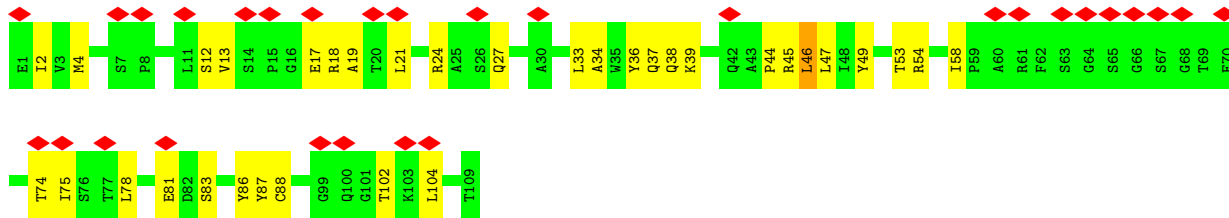
Mol	Chain	Residues	Atoms					AltConf	Trace
			Total	C	N	O	S		
3	E	109	Total 826	510	148	165	3	0	0
3	L	109	Total 826	510	148	165	3	0	0
3	N	109	Total 826	510	148	165	3	0	0



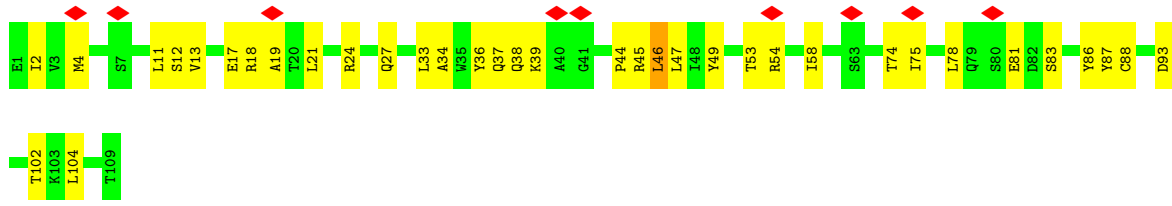
• Molecule 2: SWC11H



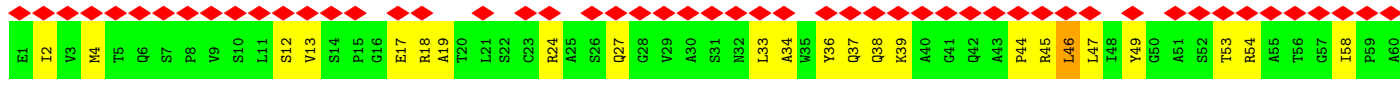
• Molecule 3: SWC11L

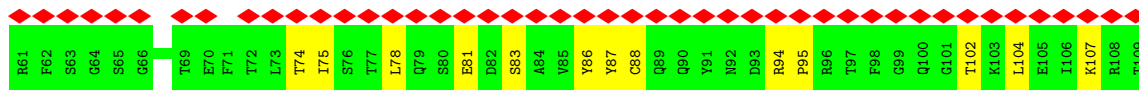


• Molecule 3: SWC11L



• Molecule 3: SWC11L





4 Experimental information

Property	Value	Source
EM reconstruction method	SINGLE PARTICLE	Depositor
Imposed symmetry	POINT, Not provided	
Number of particles used	398316	Depositor
Resolution determination method	FSC 0.143 CUT-OFF	Depositor
CTF correction method	PHASE FLIPPING AND AMPLITUDE CORRECTION	Depositor
Microscope	FEI TITAN KRIOS	Depositor
Voltage (kV)	300	Depositor
Electron dose ($e^-/\text{\AA}^2$)	50	Depositor
Minimum defocus (nm)	1000	Depositor
Maximum defocus (nm)	1500	Depositor
Magnification	Not provided	
Image detector	GATAN K3 (6k x 4k)	Depositor
Maximum map value	3.462	Depositor
Minimum map value	-1.756	Depositor
Average map value	-0.000	Depositor
Map value standard deviation	0.072	Depositor
Recommended contour level	0.26	Depositor
Map size (Å)	432.00003, 432.00003, 432.00003	wwPDB
Map dimensions	400, 400, 400	wwPDB
Map angles (°)	90.0, 90.0, 90.0	wwPDB
Pixel spacing (Å)	1.08, 1.08, 1.08	Depositor

5 Model quality i

5.1 Standard geometry i

The Z score for a bond length (or angle) is the number of standard deviations the observed value is removed from the expected value. A bond length (or angle) with $|Z| > 5$ is considered an outlier worth inspection. RMSZ is the root-mean-square of all Z scores of the bond lengths (or angles).

Mol	Chain	Bond lengths		Bond angles	
		RMSZ	# Z >5	RMSZ	# Z >5
1	A	0.69	5/7908 (0.1%)	0.69	10/10767 (0.1%)
1	B	0.70	2/7822 (0.0%)	0.67	4/10648 (0.0%)
1	C	0.73	9/7855 (0.1%)	0.76	12/10702 (0.1%)
2	D	0.32	0/948	0.72	2/1287 (0.2%)
2	H	0.32	0/948	0.73	2/1287 (0.2%)
2	M	0.32	0/948	0.72	2/1287 (0.2%)
3	E	0.35	0/840	0.63	0/1136
3	L	0.35	0/840	0.63	0/1136
3	N	0.35	0/840	0.63	0/1136
All	All	0.65	16/28949 (0.1%)	0.71	32/39386 (0.1%)

Chiral center outliers are detected by calculating the chiral volume of a chiral center and verifying if the center is modelled as a planar moiety or with the opposite hand. A planarity outlier is detected by checking planarity of atoms in a peptide group, atoms in a mainchain group or atoms of a sidechain that are expected to be planar.

Mol	Chain	#Chirality outliers	#Planarity outliers
1	A	0	4
1	B	0	5
1	C	0	5
All	All	0	14

The worst 5 of 16 bond length outliers are listed below:

Mol	Chain	Res	Type	Atoms	Z	Observed(Å)	Ideal(Å)
1	A	738	CYS	CB-SG	-6.88	1.70	1.82
1	C	1072	GLU	C-O	-6.01	1.11	1.23
1	B	738	CYS	CB-SG	-5.99	1.72	1.82
1	C	1072	GLU	CG-CD	-5.84	1.43	1.51
1	C	1094	VAL	CB-CG1	-5.83	1.40	1.52

The worst 5 of 32 bond angle outliers are listed below:

Mol	Chain	Res	Type	Atoms	Z	Observed(°)	Ideal(°)
1	C	329	PHE	C-N-CD	-25.37	64.78	120.60
1	C	657	ASN	CB-CA-C	-10.68	89.04	110.40
1	A	738	CYS	CA-CB-SG	8.84	129.91	114.00
1	A	760	CYS	CA-CB-SG	-7.75	100.05	114.00
1	A	617	CYS	CA-CB-SG	-7.62	100.29	114.00

There are no chirality outliers.

5 of 14 planarity outliers are listed below:

Mol	Chain	Res	Type	Group
1	A	110	LEU	Peptide
1	A	612	TYR	Peptide
1	A	657	ASN	Peptide
1	A	86	PHE	Peptide
1	B	31	SER	Peptide

5.2 Too-close contacts [i](#)

In the following table, the Non-H and H(model) columns list the number of non-hydrogen atoms and hydrogen atoms in the chain respectively. The H(added) column lists the number of hydrogen atoms added and optimized by MolProbity. The Clashes column lists the number of clashes within the asymmetric unit, whereas Symm-Clashes lists symmetry-related clashes.

Mol	Chain	Non-H	H(model)	H(added)	Clashes	Symm-Clashes
1	A	7736	0	7499	91	0
1	B	7653	0	7422	83	0
1	C	7683	0	7409	134	0
2	D	926	0	878	16	0
2	H	926	0	878	15	0
2	M	926	0	878	17	0
3	E	826	0	816	16	0
3	L	826	0	816	18	0
3	N	826	0	816	19	0
All	All	28328	0	27412	379	0

The all-atom clashscore is defined as the number of clashes found per 1000 atoms (including hydrogen atoms). The all-atom clashscore for this structure is 7.

The worst 5 of 379 close contacts within the same asymmetric unit are listed below, sorted by their clash magnitude.

Atom-1	Atom-2	Interatomic distance (Å)	Clash overlap (Å)
1:C:332:ILE:CD1	1:C:527:PRO:HA	1.11	1.52
1:C:332:ILE:CD1	1:C:527:PRO:CA	2.00	1.37
1:C:332:ILE:HD12	1:C:527:PRO:CA	1.57	1.27
1:C:330:PRO:HD3	1:C:580:GLN:HG2	1.20	1.15
1:C:332:ILE:HD13	1:C:527:PRO:HA	1.31	1.09

There are no symmetry-related clashes.

5.3 Torsion angles [i](#)

5.3.1 Protein backbone [i](#)

In the following table, the Percentiles column shows the percent Ramachandran outliers of the chain as a percentile score with respect to all PDB entries followed by that with respect to all EM entries.

The Analysed column shows the number of residues for which the backbone conformation was analysed, and the total number of residues.

Mol	Chain	Analysed	Favoured	Allowed	Outliers	Percentiles	
1	A	982/1286 (76%)	910 (93%)	71 (7%)	1 (0%)	51	85
1	B	969/1286 (75%)	902 (93%)	66 (7%)	1 (0%)	51	85
1	C	979/1286 (76%)	899 (92%)	74 (8%)	6 (1%)	25	62
2	D	117/222 (53%)	109 (93%)	8 (7%)	0	100	100
2	H	117/222 (53%)	109 (93%)	8 (7%)	0	100	100
2	M	117/222 (53%)	109 (93%)	8 (7%)	0	100	100
3	E	107/109 (98%)	94 (88%)	13 (12%)	0	100	100
3	L	107/109 (98%)	94 (88%)	13 (12%)	0	100	100
3	N	107/109 (98%)	94 (88%)	13 (12%)	0	100	100
All	All	3602/4851 (74%)	3320 (92%)	274 (8%)	8 (0%)	50	81

5 of 8 Ramachandran outliers are listed below:

Mol	Chain	Res	Type
1	B	1084	ASP
1	C	330	PRO
1	C	617	CYS
1	A	896	ILE
1	C	329	PHE

5.3.2 Protein sidechains [i](#)

In the following table, the Percentiles column shows the percent sidechain outliers of the chain as a percentile score with respect to all PDB entries followed by that with respect to all EM entries.

The Analysed column shows the number of residues for which the sidechain conformation was analysed, and the total number of residues.

Mol	Chain	Analysed	Rotameric	Outliers	Percentiles	
1	A	854/1113 (77%)	852 (100%)	2 (0%)	93	98
1	B	850/1113 (76%)	849 (100%)	1 (0%)	93	98
1	C	846/1113 (76%)	834 (99%)	12 (1%)	67	87
2	D	99/189 (52%)	93 (94%)	6 (6%)	18	51
2	H	99/189 (52%)	93 (94%)	6 (6%)	18	51
2	M	99/189 (52%)	93 (94%)	6 (6%)	18	51
3	E	89/89 (100%)	83 (93%)	6 (7%)	16	47
3	L	89/89 (100%)	83 (93%)	6 (7%)	16	47
3	N	89/89 (100%)	83 (93%)	6 (7%)	16	47
All	All	3114/4173 (75%)	3063 (98%)	51 (2%)	64	86

5 of 51 residues with a non-rotameric sidechain are listed below:

Mol	Chain	Res	Type
2	H	34	MET
3	L	24	ARG
3	N	46	LEU
2	H	37	VAL
2	H	113	VAL

Sometimes sidechains can be flipped to improve hydrogen bonding and reduce clashes. 5 of 6 such sidechains are listed below:

Mol	Chain	Res	Type
1	B	1071	GLN
1	C	606	ASN
1	C	613	GLN
1	A	474	GLN
1	A	282	ASN

5.3.3 RNA [i](#)

There are no RNA molecules in this entry.

5.4 Non-standard residues in protein, DNA, RNA chains [i](#)

There are no non-standard protein/DNA/RNA residues in this entry.

5.5 Carbohydrates [i](#)

There are no monosaccharides in this entry.

5.6 Ligand geometry [i](#)

There are no ligands in this entry.

5.7 Other polymers [i](#)

There are no such residues in this entry.

5.8 Polymer linkage issues [i](#)

There are no chain breaks in this entry.

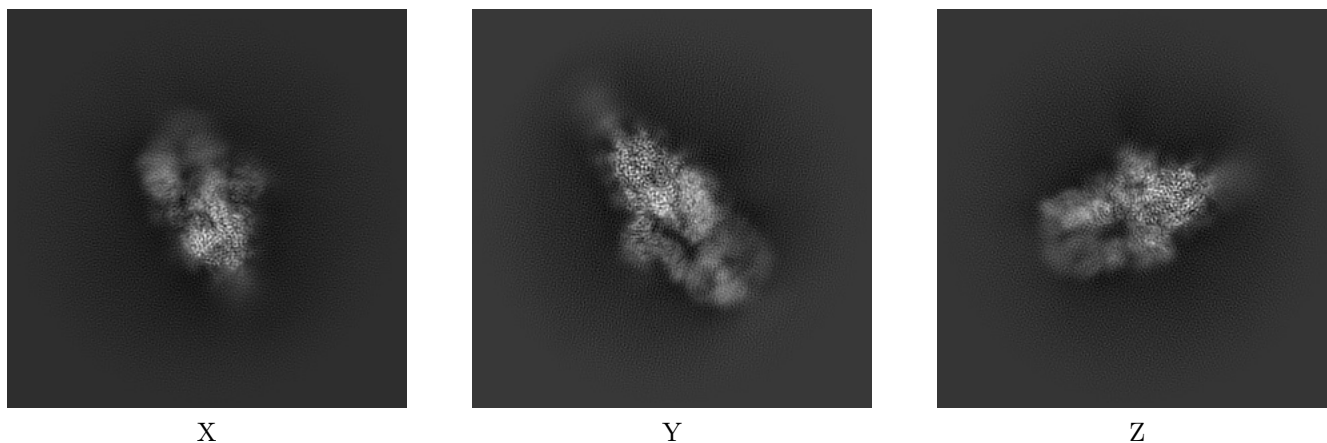
6 Map visualisation [i](#)

This section contains visualisations of the EMDB entry EMD-32427. These allow visual inspection of the internal detail of the map and identification of artifacts.

No raw map or half-maps were deposited for this entry and therefore no images, graphs, etc. pertaining to the raw map can be shown.

6.1 Orthogonal projections [i](#)

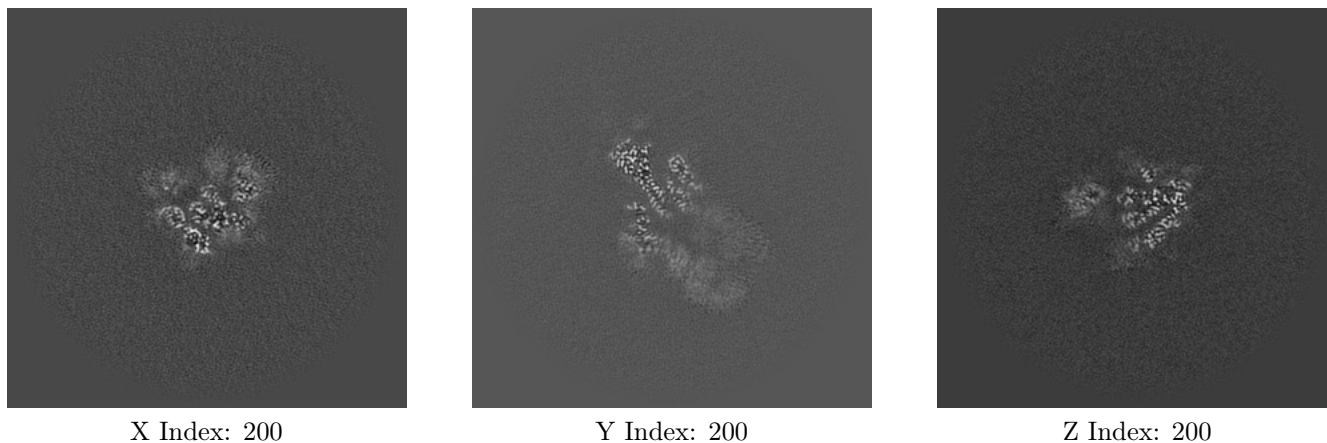
6.1.1 Primary map



The images above show the map projected in three orthogonal directions.

6.2 Central slices [i](#)

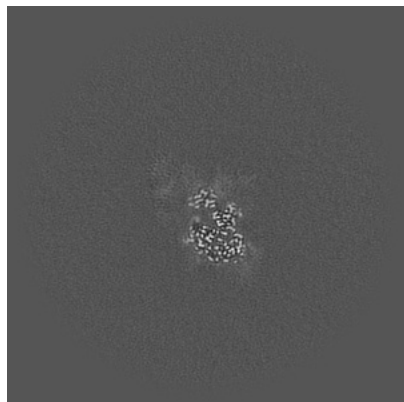
6.2.1 Primary map



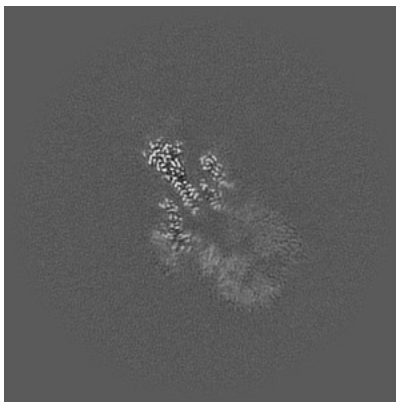
The images above show central slices of the map in three orthogonal directions.

6.3 Largest variance slices [i](#)

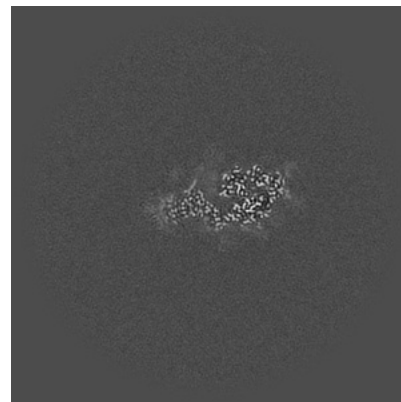
6.3.1 Primary map



X Index: 237



Y Index: 199

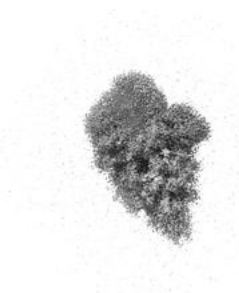


Z Index: 169

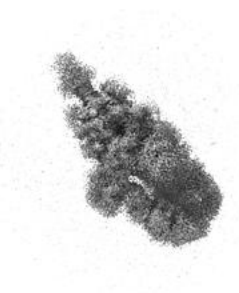
The images above show the largest variance slices of the map in three orthogonal directions.

6.4 Orthogonal surface views [i](#)

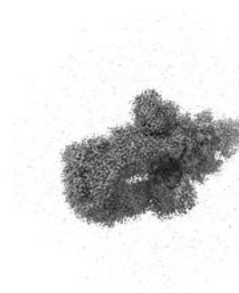
6.4.1 Primary map



X



Y



Z

The images above show the 3D surface view of the map at the recommended contour level 0.26. These images, in conjunction with the slice images, may facilitate assessment of whether an appropriate contour level has been provided.

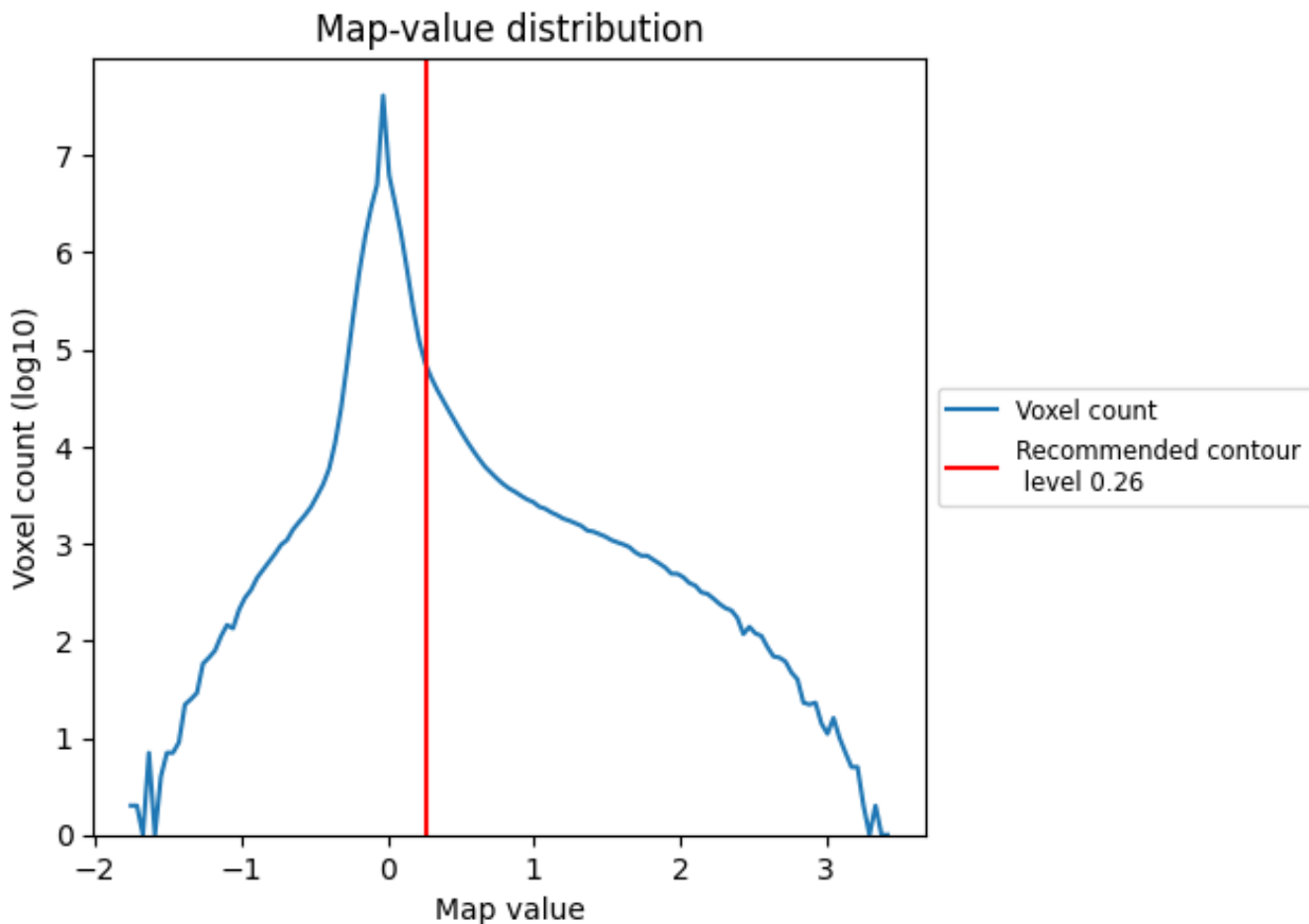
6.5 Mask visualisation

This section was not generated. No masks/segmentation were deposited.

7 Map analysis [i](#)

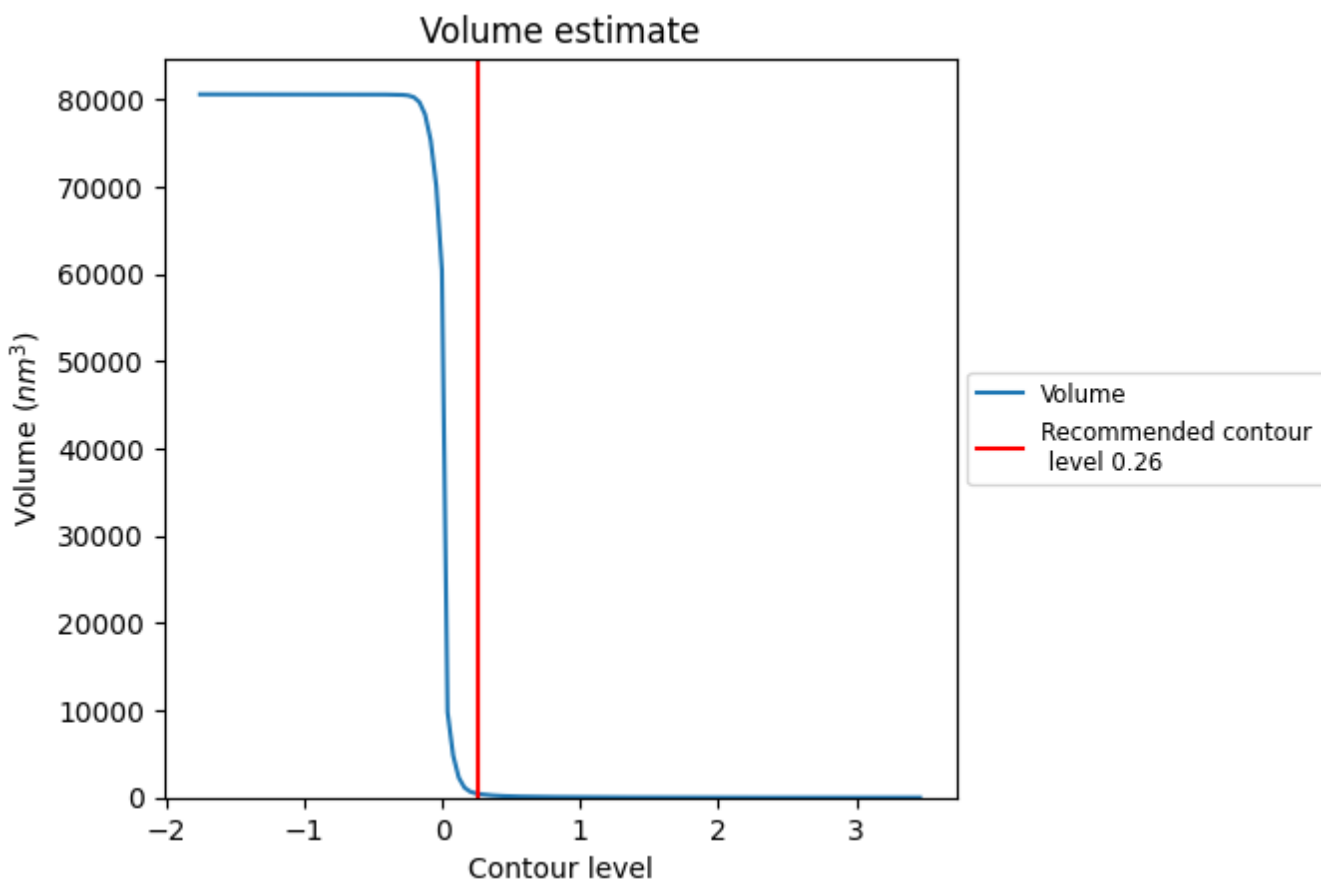
This section contains the results of statistical analysis of the map.

7.1 Map-value distribution [i](#)



The map-value distribution is plotted in 128 intervals along the x-axis. The y-axis is logarithmic. A spike in this graph at zero usually indicates that the volume has been masked.

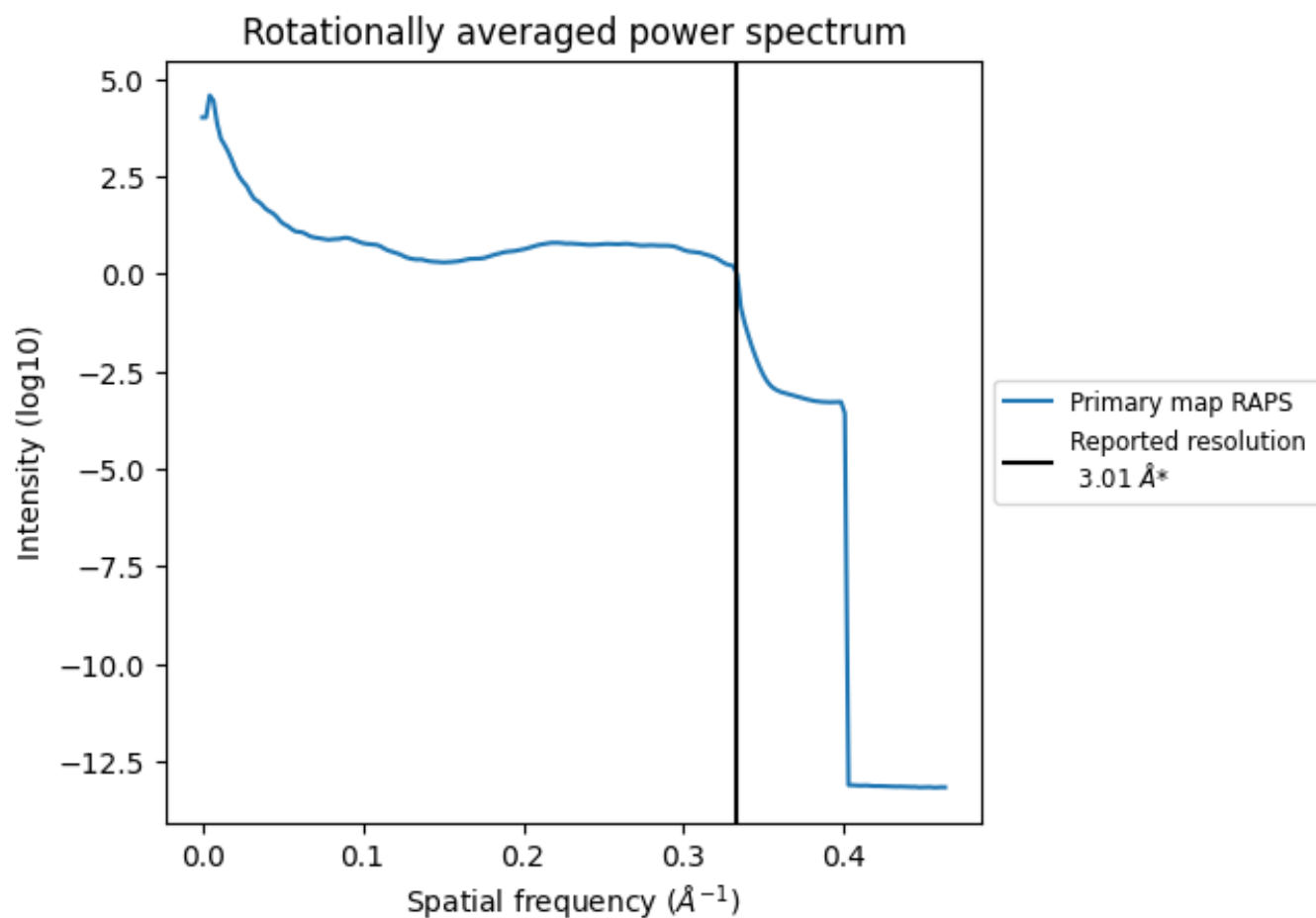
7.2 Volume estimate [i](#)



The volume at the recommended contour level is 433 nm³; this corresponds to an approximate mass of 391 kDa.

The volume estimate graph shows how the enclosed volume varies with the contour level. The recommended contour level is shown as a vertical line and the intersection between the line and the curve gives the volume of the enclosed surface at the given level.

7.3 Rotationally averaged power spectrum i



*Reported resolution corresponds to spatial frequency of 0.332 \AA^{-1}

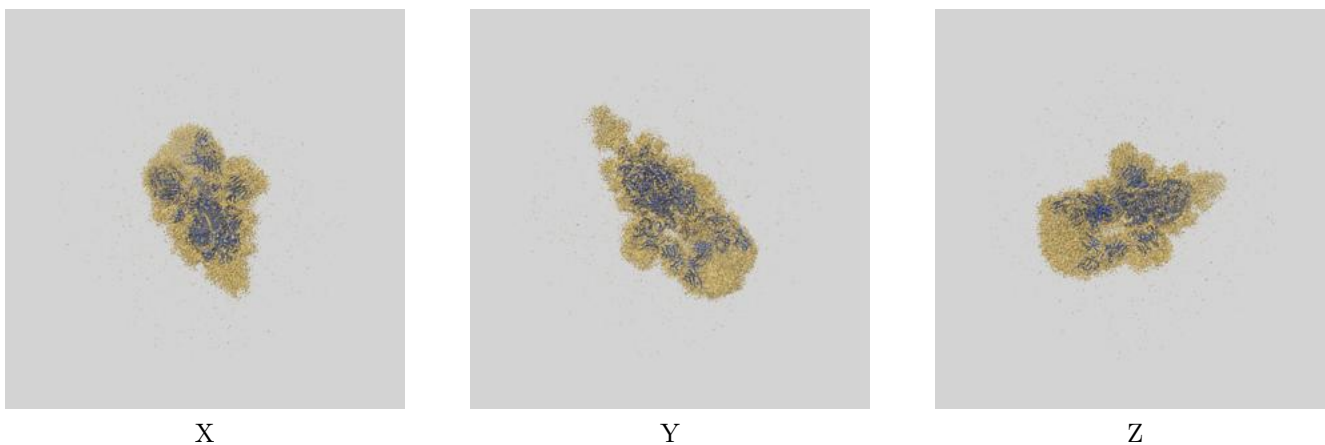
8 Fourier-Shell correlation

This section was not generated. No FSC curve or half-maps provided.

9 Map-model fit [i](#)

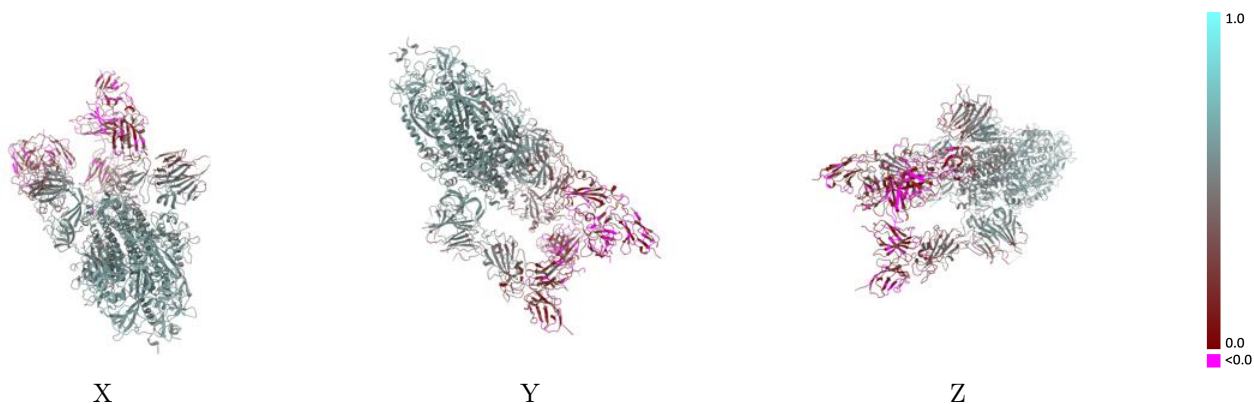
This section contains information regarding the fit between EMDB map EMD-32427 and PDB model 7WCP. Per-residue inclusion information can be found in section [3](#) on page [12](#).

9.1 Map-model overlay [i](#)



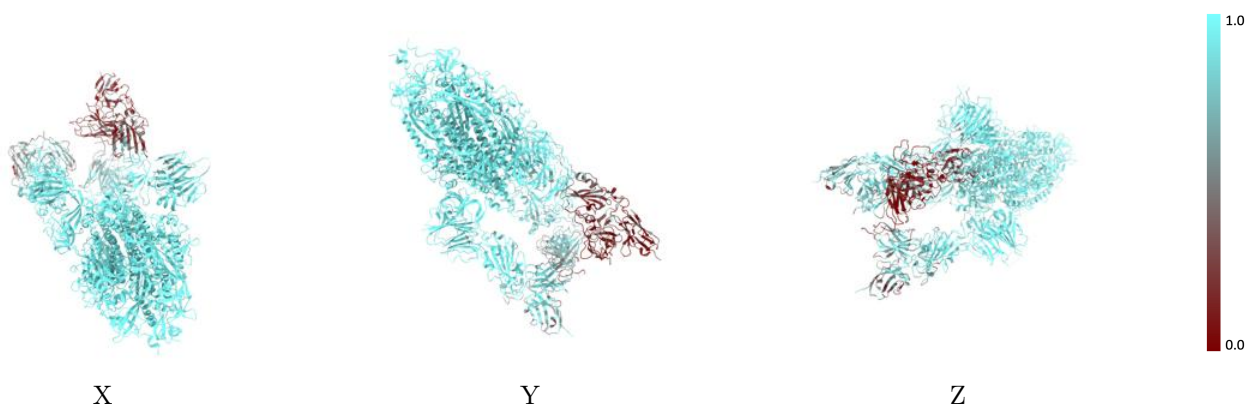
The images above show the 3D surface view of the map at the recommended contour level 0.26 at 50% transparency in yellow overlaid with a ribbon representation of the model coloured in blue. These images allow for the visual assessment of the quality of fit between the atomic model and the map.

9.2 Q-score mapped to coordinate model [i](#)



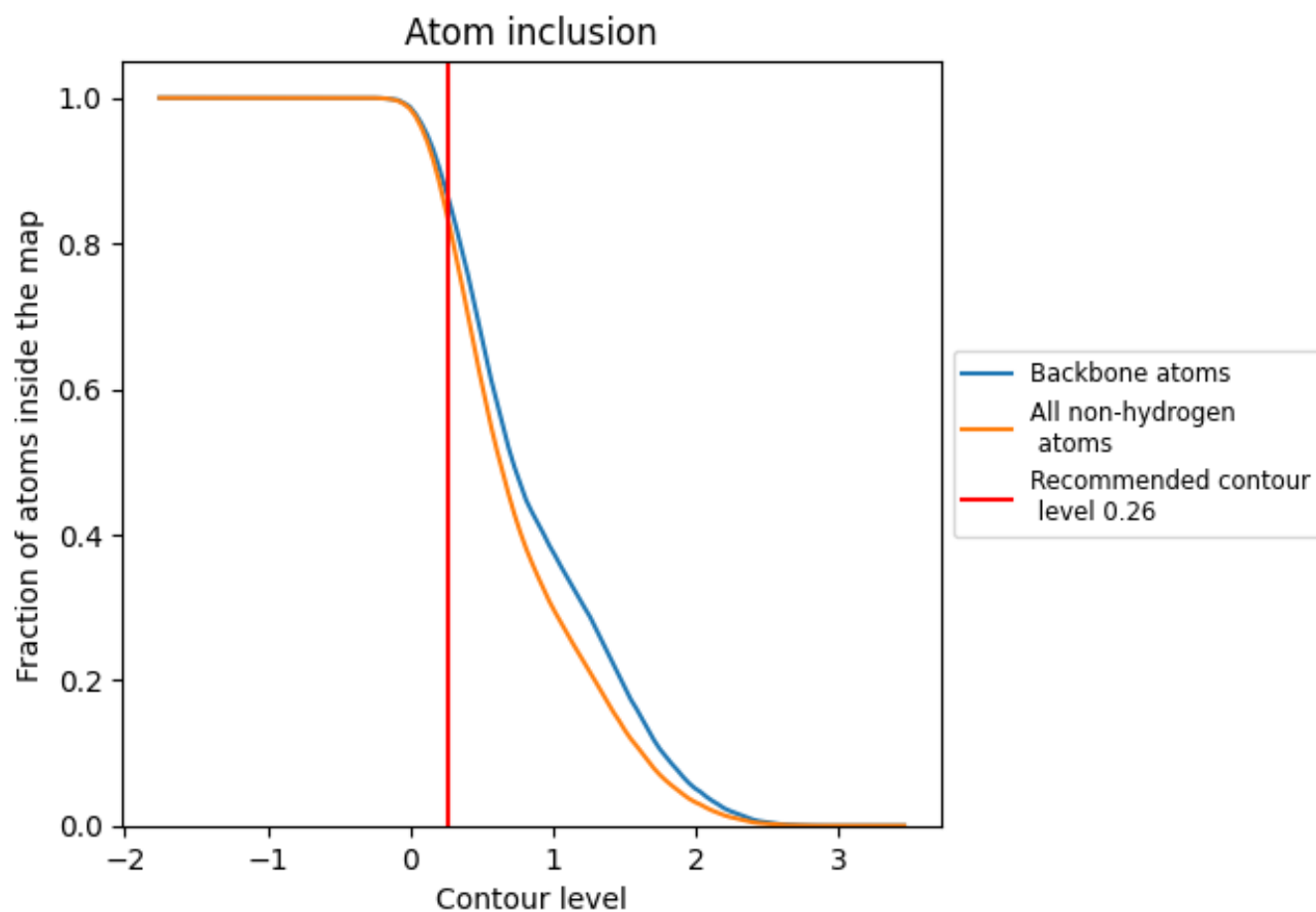
The images above show the model with each residue coloured according to its Q-score. This shows their resolvability in the map with higher Q-score values reflecting better resolvability. Please note: Q-score is calculating the resolvability of atoms, and thus high values are only expected at resolutions at which atoms can be resolved. Low Q-score values may therefore be expected for many entries.

9.3 Atom inclusion mapped to coordinate model [i](#)



The images above show the model with each residue coloured according to its atom inclusion. This shows to what extent they are inside the map at the recommended contour level (0.26).





















9.4 Atom inclusion [i](#)



At the recommended contour level, 87% of all backbone atoms, 84% of all non-hydrogen atoms, are inside the map.

9.5 Map-model fit summary

The table lists the average atom inclusion at the recommended contour level (0.26) and Q-score for the entire model and for each chain.

Chain	Atom inclusion	Q-score
All	 0.8372	 0.4210
A	 0.9518	 0.5030
B	 0.9475	 0.5050
C	 0.8427	 0.4580
D	 0.6556	 0.1350
E	 0.5709	 0.1160
H	 0.7256	 0.1960
L	 0.7289	 0.1830
M	 0.1189	 0.0370
N	 0.1716	 0.0890

