



Full wwPDB X-ray Structure Validation Report ⓘ

Dec 7, 2022 – 08:10 PM JST

PDB ID : 4WDX
Title : 17beta-HSD5 in complex with [4-(2-hydroxyethyl)piperidin-1-yl](5-methyl-1H-indol-2-yl)methanone
Authors : Amano, Y.; Yamaguchi, T.
Deposited on : 2014-09-09
Resolution : 1.64 Å(reported)

This is a Full wwPDB X-ray Structure Validation Report for a publicly released PDB entry.

We welcome your comments at validation@mail.wwpdb.org

A user guide is available at

<https://www.wwpdb.org/validation/2017/XrayValidationReportHelp>

with specific help available everywhere you see the ⓘ symbol.

The types of validation reports are described at

<http://www.wwpdb.org/validation/2017/FAQs#types>.

The following versions of software and data (see [references ⓘ](#)) were used in the production of this report:

MolProbity : 4.02b-467
Mogul : 1.8.5 (274361), CSD as541be (2020)
Xtrriage (Phenix) : 1.13
EDS : 2.31.3
buster-report : 1.1.7 (2018)
Percentile statistics : 20191225.v01 (using entries in the PDB archive December 25th 2019)
Refmac : 5.8.0158
CCP4 : 7.0.044 (Gargrove)
Ideal geometry (proteins) : Engh & Huber (2001)
Ideal geometry (DNA, RNA) : Parkinson et al. (1996)
Validation Pipeline (wwPDB-VP) : 2.31.3

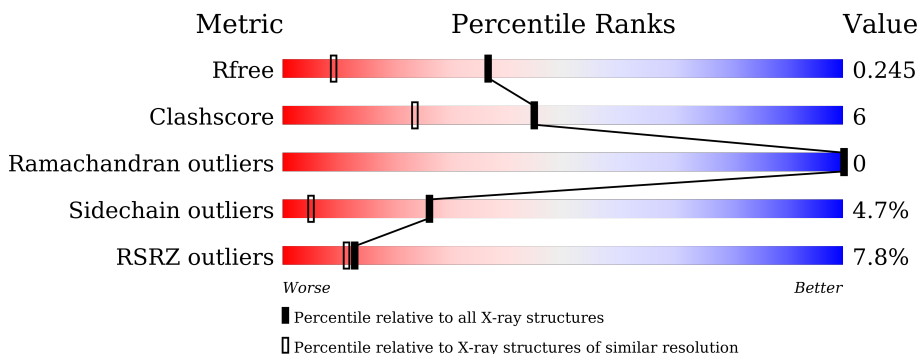
1 Overall quality at a glance

The following experimental techniques were used to determine the structure:

X-RAY DIFFRACTION

The reported resolution of this entry is 1.64 Å.

Percentile scores (ranging between 0-100) for global validation metrics of the entry are shown in the following graphic. The table shows the number of entries on which the scores are based.



Metric	Whole archive (#Entries)	Similar resolution (#Entries, resolution range(Å))
R_{free}	130704	3122 (1.66-1.62)
Clashscore	141614	3268 (1.66-1.62)
Ramachandran outliers	138981	3215 (1.66-1.62)
Sidechain outliers	138945	3215 (1.66-1.62)
RSRZ outliers	127900	3079 (1.66-1.62)

The table below summarises the geometric issues observed across the polymeric chains and their fit to the electron density. The red, orange, yellow and green segments of the lower bar indicate the fraction of residues that contain outliers for ≥ 3 , 2, 1 and 0 types of geometric quality criteria respectively. A grey segment represents the fraction of residues that are not modelled. The numeric value for each fraction is indicated below the corresponding segment, with a dot representing fractions $\leq 5\%$. The upper red bar (where present) indicates the fraction of residues that have poor fit to the electron density. The numeric value is given above the bar.

Mol	Chain	Length	Quality of chain
1	A	331	 10% 75% 11% •• 10%
1	B	331	 5% 81% 8% •• 9%

2 Entry composition

There are 4 unique types of molecules in this entry. The entry contains 5218 atoms, of which 0 are hydrogens and 0 are deuteriums.

In the tables below, the ZeroOcc column contains the number of atoms modelled with zero occupancy, the AltConf column contains the number of residues with at least one atom in alternate conformation and the Trace column contains the number of residues modelled with at most 2 atoms.

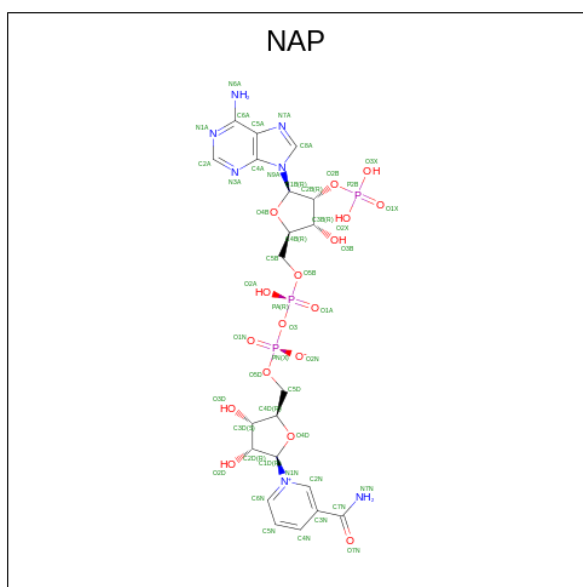
- Molecule 1 is a protein called Aldo-keto reductase family 1 member C3.

Mol	Chain	Residues	Atoms					ZeroOcc	AltConf	Trace
			Total	C	N	O	S			
1	A	298	2388	1526	418	432	12	0	0	0
1	B	302	2416	1543	423	438	12	0	0	0

There are 18 discrepancies between the modelled and reference sequences:

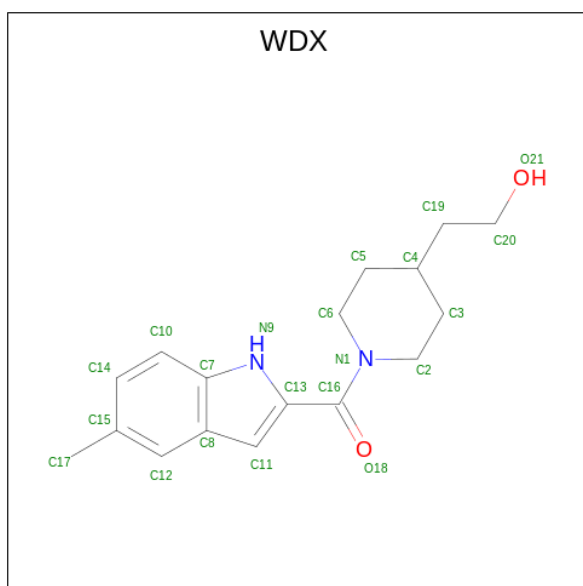
Chain	Residue	Modelled	Actual	Comment	Reference
A	5	GLN	HIS	variant	UNP P42330
A	324	LEU	-	expression tag	UNP P42330
A	325	GLU	-	expression tag	UNP P42330
A	326	HIS	-	expression tag	UNP P42330
A	327	HIS	-	expression tag	UNP P42330
A	328	HIS	-	expression tag	UNP P42330
A	329	HIS	-	expression tag	UNP P42330
A	330	HIS	-	expression tag	UNP P42330
A	331	HIS	-	expression tag	UNP P42330
B	5	GLN	HIS	variant	UNP P42330
B	324	LEU	-	expression tag	UNP P42330
B	325	GLU	-	expression tag	UNP P42330
B	326	HIS	-	expression tag	UNP P42330
B	327	HIS	-	expression tag	UNP P42330
B	328	HIS	-	expression tag	UNP P42330
B	329	HIS	-	expression tag	UNP P42330
B	330	HIS	-	expression tag	UNP P42330
B	331	HIS	-	expression tag	UNP P42330

- Molecule 2 is NADP NICOTINAMIDE-ADENINE-DINUCLEOTIDE PHOSPHATE (three-letter code: NAP) (formula: C₂₁H₂₈N₇O₁₇P₃).



Mol	Chain	Residues	Atoms				ZeroOcc	AltConf	
			Total	C	N	O			P
2	A	1	48	21	7	17	3	0	0
2	B	1	48	21	7	17	3	0	0

- Molecule 3 is [4-(2-hydroxyethyl)piperidin-1-yl](5-methyl-1H-indol-2-yl)methanone (three-letter code: WDX) (formula: C₁₇H₂₂N₂O₂).



Mol	Chain	Residues	Atoms				ZeroOcc	AltConf
			Total	C	N	O		
3	A	1	21	17	2	2	0	0

Continued on next page...

Continued from previous page...

Mol	Chain	Residues	Atoms				ZeroOcc	AltConf
			Total	C	N	O		
3	B	1	21	17	2	2	0	0

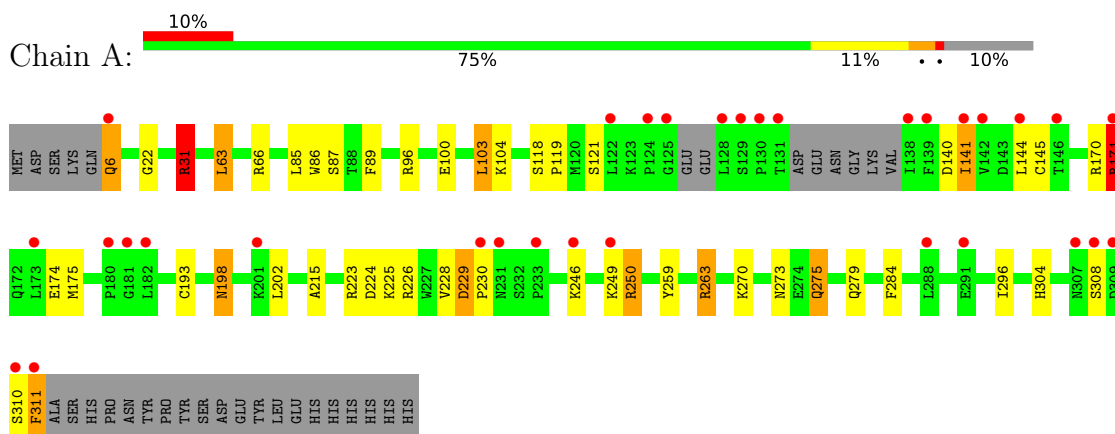
- Molecule 4 is water.

Mol	Chain	Residues	Atoms		ZeroOcc	AltConf
4	A	122	Total	O	0	0
			122	122		
4	B	154	Total	O	0	0
			154	154		

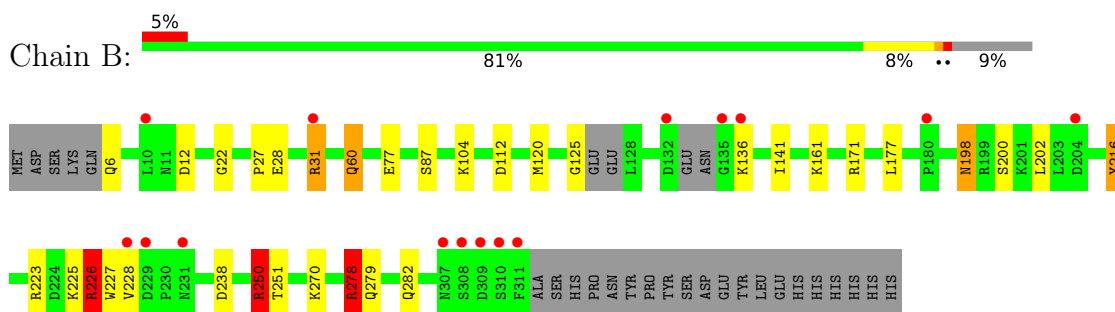
3 Residue-property plots [i](#)

These plots are drawn for all protein, RNA, DNA and oligosaccharide chains in the entry. The first graphic for a chain summarises the proportions of the various outlier classes displayed in the second graphic. The second graphic shows the sequence view annotated by issues in geometry and electron density. Residues are color-coded according to the number of geometric quality criteria for which they contain at least one outlier: green = 0, yellow = 1, orange = 2 and red = 3 or more. A red dot above a residue indicates a poor fit to the electron density ($RSRZ > 2$). Stretches of 2 or more consecutive residues without any outlier are shown as a green connector. Residues present in the sample, but not in the model, are shown in grey.

- Molecule 1: Aldo-keto reductase family 1 member C3



- Molecule 1: Aldo-keto reductase family 1 member C3



4 Data and refinement statistics

Property	Value	Source
Space group	P 1 21 1	Depositor
Cell constants a, b, c, α , β , γ	60.04Å 77.23Å 72.21Å 90.00° 97.62° 90.00°	Depositor
Resolution (Å)	14.27 – 1.64 14.27 – 1.64	Depositor EDS
% Data completeness (in resolution range)	95.6 (14.27-1.64) 95.8 (14.27-1.64)	Depositor EDS
R_{merge}	(Not available)	Depositor
R_{sym}	(Not available)	Depositor
$\langle I/\sigma(I) \rangle$ ¹	1.41 (at 1.64Å)	Xtrriage
Refinement program	REFMAC 5.7.0029	Depositor
R, R_{free}	0.214 , 0.249 0.211 , 0.245	Depositor DCC
R_{free} test set	3855 reflections (5.04%)	wwPDB-VP
Wilson B-factor (Å ²)	26.3	Xtrriage
Anisotropy	0.021	Xtrriage
Bulk solvent k_{sol} (e/Å ³), B_{sol} (Å ²)	0.50 , 56.2	EDS
L-test for twinning ²	$\langle L \rangle = 0.51$, $\langle L^2 \rangle = 0.35$	Xtrriage
Estimated twinning fraction	No twinning to report.	Xtrriage
F_o, F_c correlation	0.96	EDS
Total number of atoms	5218	wwPDB-VP
Average B, all atoms (Å ²)	27.0	wwPDB-VP

Xtrriage's analysis on translational NCS is as follows: *The largest off-origin peak in the Patterson function is 6.71% of the height of the origin peak. No significant pseudotranslation is detected.*

¹Intensities estimated from amplitudes.

²Theoretical values of $\langle |L| \rangle$, $\langle L^2 \rangle$ for acentric reflections are 0.5, 0.333 respectively for untwinned datasets, and 0.375, 0.2 for perfectly twinned datasets.

5 Model quality [i](#)

5.1 Standard geometry [i](#)

Bond lengths and bond angles in the following residue types are not validated in this section: NAP, WDX

The Z score for a bond length (or angle) is the number of standard deviations the observed value is removed from the expected value. A bond length (or angle) with $|Z| > 5$ is considered an outlier worth inspection. RMSZ is the root-mean-square of all Z scores of the bond lengths (or angles).

Mol	Chain	Bond lengths		Bond angles	
		RMSZ	# Z >5	RMSZ	# Z >5
1	A	1.06	0/2439	1.14	10/3295 (0.3%)
1	B	1.09	1/2467 (0.0%)	1.18	17/3332 (0.5%)
All	All	1.07	1/4906 (0.0%)	1.16	27/6627 (0.4%)

All (1) bond length outliers are listed below:

Mol	Chain	Res	Type	Atoms	Z	Observed(Å)	Ideal(Å)
1	B	216	TYR	CG-CD2	5.38	1.46	1.39

All (27) bond angle outliers are listed below:

Mol	Chain	Res	Type	Atoms	Z	Observed(°)	Ideal(°)
1	A	66	ARG	NE-CZ-NH1	-18.73	110.94	120.30
1	B	250	ARG	NE-CZ-NH2	16.35	128.48	120.30
1	A	66	ARG	NE-CZ-NH2	13.35	126.98	120.30
1	A	250	ARG	NE-CZ-NH2	9.73	125.17	120.30
1	B	226	ARG	CG-CD-NE	9.61	131.97	111.80
1	B	278	ARG	NE-CZ-NH2	9.51	125.05	120.30
1	A	103	LEU	CB-CG-CD2	8.30	125.11	111.00
1	A	171	ARG	NE-CZ-NH1	8.17	124.39	120.30
1	B	250	ARG	NE-CZ-NH1	-7.96	116.32	120.30
1	B	31	ARG	NE-CZ-NH1	-7.89	116.36	120.30
1	B	177	LEU	CB-CG-CD1	-7.48	98.28	111.00
1	B	31	ARG	NE-CZ-NH2	7.26	123.93	120.30
1	B	226	ARG	CB-CA-C	7.24	124.88	110.40
1	A	31	ARG	NE-CZ-NH1	-6.75	116.93	120.30
1	B	226	ARG	CA-CB-CG	6.62	127.96	113.40
1	B	238	ASP	CB-CG-OD2	-6.40	112.54	118.30
1	B	12	ASP	CB-CG-OD2	-6.38	112.56	118.30
1	A	63	LEU	CA-CB-CG	6.35	129.90	115.30

Continued on next page...

Continued from previous page...

Mol	Chain	Res	Type	Atoms	Z	Observed(°)	Ideal(°)
1	B	112	ASP	CB-CG-OD1	-6.34	112.60	118.30
1	B	278	ARG	NE-CZ-NH1	-6.30	117.15	120.30
1	A	250	ARG	NE-CZ-NH1	-6.29	117.16	120.30
1	B	226	ARG	NE-CZ-NH1	5.89	123.25	120.30
1	A	229	ASP	CB-CG-OD2	-5.88	113.01	118.30
1	B	278	ARG	CD-NE-CZ	5.59	131.42	123.60
1	A	31	ARG	NE-CZ-NH2	5.45	123.03	120.30
1	B	250	ARG	CB-CG-CD	5.43	125.72	111.60
1	B	28	GLU	OE1-CD-OE2	-5.36	116.86	123.30

There are no chirality outliers.

There are no planarity outliers.

5.2 Too-close contacts [i](#)

In the following table, the Non-H and H(model) columns list the number of non-hydrogen atoms and hydrogen atoms in the chain respectively. The H(added) column lists the number of hydrogen atoms added and optimized by MolProbity. The Clashes column lists the number of clashes within the asymmetric unit, whereas Symm-Clashes lists symmetry-related clashes.

Mol	Chain	Non-H	H(model)	H(added)	Clashes	Symm-Clashes
1	A	2388	0	2416	34	0
1	B	2416	0	2445	29	0
2	A	48	0	25	3	0
2	B	48	0	25	4	0
3	A	21	0	22	1	0
3	B	21	0	22	1	0
4	A	122	0	0	2	0
4	B	154	0	0	10	0
All	All	5218	0	4955	64	0

The all-atom clashscore is defined as the number of clashes found per 1000 atoms (including hydrogen atoms). The all-atom clashscore for this structure is 6.

All (64) close contacts within the same asymmetric unit are listed below, sorted by their clash magnitude.

Atom-1	Atom-2	Interatomic distance (Å)	Clash overlap (Å)
1:A:311:PHE:HD2	1:A:311:PHE:O	1.22	1.19
1:B:125:GLY:C	4:B:612:HOH:O	1.98	1.01
1:A:311:PHE:O	1:A:311:PHE:CD2	2.14	0.99

Continued on next page...

Continued from previous page...

Atom-1	Atom-2	Interatomic distance (Å)	Clash overlap (Å)
1:B:77:GLU:HG2	4:B:586:HOH:O	1.61	0.99
1:A:31:ARG:NH1	4:A:622:HOH:O	2.00	0.94
1:A:119:PRO:HA	1:A:144:LEU:HD21	1.59	0.83
1:B:104:LYS:CE	4:B:523:HOH:O	2.29	0.79
1:A:6:GLN:HG3	1:A:284:PHE:CE1	2.17	0.79
1:B:31:ARG:N	1:B:31:ARG:HD2	2.01	0.75
1:B:104:LYS:HE2	4:B:523:HOH:O	1.84	0.75
1:A:311:PHE:HD2	1:A:311:PHE:C	1.92	0.73
1:A:279:GLN:NE2	2:A:401:NAP:H62A	1.86	0.73
1:B:31:ARG:NH1	4:B:639:HOH:O	2.24	0.69
1:A:145:CYS:SG	1:A:175:MET:HG2	2.31	0.69
1:B:278:ARG:HG2	1:B:278:ARG:HH21	1.57	0.67
1:A:198:ASN:C	1:A:198:ASN:HD22	1.98	0.67
1:B:250:ARG:HH11	1:B:282:GLN:HE21	1.43	0.67
1:A:311:PHE:CD2	1:A:311:PHE:C	2.66	0.66
1:A:224:ASP:OD2	1:A:226:ARG:HD3	1.96	0.66
1:A:171:ARG:C	1:A:171:ARG:HD2	2.17	0.65
1:A:259:TYR:O	1:A:263:ARG:HG2	1.99	0.63
1:B:279:GLN:NE2	2:B:401:NAP:H62A	1.98	0.62
1:A:273:ASN:OD1	1:A:275:GLN:HG3	2.00	0.61
1:B:104:LYS:HE3	4:B:523:HOH:O	1.99	0.59
1:A:170:ARG:O	1:A:174:GLU:HG3	2.03	0.58
1:B:198:ASN:HD22	1:B:198:ASN:C	2.06	0.57
1:A:121:SER:HB2	1:A:140:ASP:O	2.05	0.56
1:A:171:ARG:HH11	1:A:175:MET:HB2	1.71	0.55
1:A:63:LEU:HD12	1:B:141:ILE:HD12	1.89	0.54
1:B:250:ARG:HD3	4:B:552:HOH:O	2.09	0.53
1:A:171:ARG:HD2	1:A:171:ARG:O	2.08	0.53
1:B:279:GLN:O	1:B:282:GLN:HB2	2.09	0.52
1:B:223:ARG:HA	1:B:228:VAL:HG21	1.93	0.51
1:B:270:LYS:O	2:B:401:NAP:H8A	2.11	0.50
3:A:402:WDX:C11	3:A:402:WDX:H10	2.41	0.50
1:A:270:LYS:O	2:A:401:NAP:H8A	2.11	0.50
1:B:60:GLN:NE2	1:B:60:GLN:H	2.11	0.49
1:B:6:GLN:N	4:B:643:HOH:O	2.45	0.48
1:B:198:ASN:HD22	1:B:200:SER:H	1.61	0.48
1:A:246:LYS:HZ2	1:A:246:LYS:HB3	1.80	0.47
1:B:251:THR:OG1	1:B:279:GLN:NE2	2.48	0.46
1:B:31:ARG:N	1:B:31:ARG:CD	2.66	0.46
1:A:304:HIS:N	1:A:304:HIS:CD2	2.83	0.46
1:A:250:ARG:HD3	4:A:582:HOH:O	2.17	0.45

Continued on next page...

Continued from previous page...

Atom-1	Atom-2	Interatomic distance (Å)	Clash overlap (Å)
1:A:198:ASN:C	1:A:198:ASN:ND2	2.69	0.44
2:B:401:NAP:C5N	3:B:402:WDX:H8	2.47	0.44
1:A:223:ARG:HA	1:A:228:VAL:HG21	2.00	0.44
1:B:198:ASN:ND2	1:B:200:SER:H	2.15	0.43
1:B:226:ARG:HG2	1:B:227:TRP:CE2	2.53	0.43
1:A:259:TYR:HB2	1:A:296:ILE:HD13	2.00	0.43
1:A:193:CYS:HB3	1:A:215:ALA:CB	2.48	0.43
1:A:141:ILE:H	1:A:141:ILE:HG12	1.61	0.42
1:A:100:GLU:O	1:A:104:LYS:HG3	2.18	0.42
1:A:85:LEU:HD11	1:A:89:PHE:HB2	2.01	0.42
1:B:171:ARG:HA	1:B:171:ARG:HD3	1.90	0.42
1:B:27:PRO:HG2	1:B:226:ARG:NH1	2.35	0.42
1:B:22:GLY:HA3	2:B:401:NAP:H4D	2.02	0.41
1:A:86:TRP:CG	1:A:87:SER:N	2.88	0.41
1:A:22:GLY:HA3	2:A:401:NAP:H4D	2.02	0.41
1:A:229:ASP:HA	1:A:230:PRO:HD2	1.92	0.41
1:B:6:GLN:N	4:B:501:HOH:O	2.53	0.41
1:A:6:GLN:HG3	1:A:284:PHE:CZ	2.55	0.41
1:B:161:LYS:HE2	4:B:645:HOH:O	2.21	0.40
1:B:87:SER:HB3	1:B:120:MET:O	2.20	0.40

There are no symmetry-related clashes.

5.3 Torsion angles [i](#)

5.3.1 Protein backbone [i](#)

In the following table, the Percentiles column shows the percent Ramachandran outliers of the chain as a percentile score with respect to all X-ray entries followed by that with respect to entries of similar resolution.

The Analysed column shows the number of residues for which the backbone conformation was analysed, and the total number of residues.

Mol	Chain	Analysed	Favoured	Allowed	Outliers	Percentiles	
1	A	292/331 (88%)	279 (96%)	13 (4%)	0	100	100
1	B	296/331 (89%)	290 (98%)	6 (2%)	0	100	100
All	All	588/662 (89%)	569 (97%)	19 (3%)	0	100	100

There are no Ramachandran outliers to report.

5.3.2 Protein sidechains [i](#)

In the following table, the Percentiles column shows the percent sidechain outliers of the chain as a percentile score with respect to all X-ray entries followed by that with respect to entries of similar resolution.

The Analysed column shows the number of residues for which the sidechain conformation was analysed, and the total number of residues.

Mol	Chain	Analysed	Rotameric	Outliers	Percentiles	
1	A	264/295 (90%)	248 (94%)	16 (6%)	18	2
1	B	267/295 (90%)	258 (97%)	9 (3%)	37	11
All	All	531/590 (90%)	506 (95%)	25 (5%)	26	5

All (25) residues with a non-rotameric sidechain are listed below:

Mol	Chain	Res	Type
1	A	6	GLN
1	A	31	ARG
1	A	96	ARG
1	A	103	LEU
1	A	118	SER
1	A	141	ILE
1	A	171	ARG
1	A	198	ASN
1	A	202	LEU
1	A	225	LYS
1	A	249	LYS
1	A	263	ARG
1	A	275	GLN
1	A	308	SER
1	A	310	SER
1	A	311	PHE
1	B	60	GLN
1	B	136	LYS
1	B	198	ASN
1	B	202	LEU
1	B	216	TYR
1	B	225	LYS
1	B	226	ARG
1	B	250	ARG
1	B	278	ARG

Sometimes sidechains can be flipped to improve hydrogen bonding and reduce clashes. All (15)

such sidechains are listed below:

Mol	Chain	Res	Type
1	A	56	ASN
1	A	60	GLN
1	A	101	ASN
1	A	198	ASN
1	A	279	GLN
1	A	282	GLN
1	A	304	HIS
1	B	6	GLN
1	B	56	ASN
1	B	60	GLN
1	B	101	ASN
1	B	198	ASN
1	B	275	GLN
1	B	279	GLN
1	B	282	GLN

5.3.3 RNA [i](#)

There are no RNA molecules in this entry.

5.4 Non-standard residues in protein, DNA, RNA chains [i](#)

There are no non-standard protein/DNA/RNA residues in this entry.

5.5 Carbohydrates [i](#)

There are no monosaccharides in this entry.

5.6 Ligand geometry [i](#)

4 ligands are modelled in this entry.

In the following table, the Counts columns list the number of bonds (or angles) for which Mogul statistics could be retrieved, the number of bonds (or angles) that are observed in the model and the number of bonds (or angles) that are defined in the Chemical Component Dictionary. The Link column lists molecule types, if any, to which the group is linked. The Z score for a bond length (or angle) is the number of standard deviations the observed value is removed from the expected value. A bond length (or angle) with $|Z| > 2$ is considered an outlier worth inspection. RMSZ is the root-mean-square of all Z scores of the bond lengths (or angles).

Mol	Type	Chain	Res	Link	Bond lengths			Bond angles		
					Counts	RMSZ	# Z > 2	Counts	RMSZ	# Z > 2
3	WDX	B	402	-	21,23,23	1.12	2 (9%)	27,32,32	1.67	9 (33%)
2	NAP	B	401	-	45,52,52	1.35	6 (13%)	56,80,80	1.95	11 (19%)
2	NAP	A	401	-	45,52,52	1.30	6 (13%)	56,80,80	1.92	10 (17%)
3	WDX	A	402	-	21,23,23	1.13	1 (4%)	27,32,32	2.19	9 (33%)

In the following table, the Chirals column lists the number of chiral outliers, the number of chiral centers analysed, the number of these observed in the model and the number defined in the Chemical Component Dictionary. Similar counts are reported in the Torsion and Rings columns. '-' means no outliers of that kind were identified.

Mol	Type	Chain	Res	Link	Chirals	Torsions	Rings
3	WDX	B	402	-	-	1/8/21/21	0/3/3/3
2	NAP	B	401	-	-	2/31/67/67	0/5/5/5
2	NAP	A	401	-	-	2/31/67/67	0/5/5/5
3	WDX	A	402	-	-	0/8/21/21	0/3/3/3

All (15) bond length outliers are listed below:

Mol	Chain	Res	Type	Atoms	Z	Observed(Å)	Ideal(Å)
2	B	401	NAP	C7N-N7N	5.06	1.42	1.33
3	A	402	WDX	C13-C16	-3.91	1.44	1.50
3	B	402	WDX	C13-C16	-3.25	1.45	1.50
2	A	401	NAP	C7N-N7N	3.20	1.39	1.33
2	A	401	NAP	C3N-C7N	-3.03	1.46	1.50
2	A	401	NAP	C6A-N6A	3.01	1.45	1.34
3	B	402	WDX	C2-N1	2.63	1.51	1.47
2	B	401	NAP	C2D-C1D	2.50	1.57	1.53
2	B	401	NAP	P2B-O2B	2.44	1.63	1.59
2	B	401	NAP	O4D-C1D	2.42	1.44	1.41
2	A	401	NAP	P2B-O2B	2.35	1.63	1.59
2	B	401	NAP	C2A-N3A	2.29	1.35	1.32
2	B	401	NAP	C4A-N3A	2.23	1.38	1.35
2	A	401	NAP	O4B-C1B	-2.15	1.38	1.41
2	A	401	NAP	O3D-C3D	2.02	1.47	1.43

All (39) bond angle outliers are listed below:

Mol	Chain	Res	Type	Atoms	Z	Observed(°)	Ideal(°)
2	B	401	NAP	C5N-C4N-C3N	-7.83	111.07	120.34
2	A	401	NAP	O7N-C7N-C3N	5.44	126.14	119.63
3	A	402	WDX	C14-C10-C7	-5.15	114.35	120.84

Continued on next page...

Continued from previous page...

Mol	Chain	Res	Type	Atoms	Z	Observed(°)	Ideal(°)
2	A	401	NAP	C5N-C4N-C3N	-5.10	114.31	120.34
2	B	401	NAP	C6N-C5N-C4N	5.06	126.79	119.44
2	A	401	NAP	C5A-C6A-N6A	4.83	127.70	120.35
3	A	402	WDX	C15-C12-C8	-4.83	115.89	121.84
2	B	401	NAP	C6N-N1N-C2N	-4.72	117.67	121.97
2	A	401	NAP	C3N-C7N-N7N	-4.70	112.11	117.75
3	B	402	WDX	C13-C11-C8	3.71	111.19	106.55
2	A	401	NAP	C6N-N1N-C2N	-3.70	118.60	121.97
2	A	401	NAP	C6N-C5N-C4N	3.69	124.81	119.44
2	B	401	NAP	N3A-C2A-N1A	3.68	134.43	128.68
3	A	402	WDX	C14-C15-C12	3.51	122.72	118.40
2	A	401	NAP	C3N-C2N-N1N	3.35	123.71	120.43
3	A	402	WDX	C11-C8-C7	3.32	109.17	106.27
2	B	401	NAP	C2N-C3N-C4N	3.22	121.91	118.26
3	A	402	WDX	C3-C2-N1	-3.04	106.19	110.82
3	B	402	WDX	C15-C12-C8	-2.96	118.19	121.84
3	A	402	WDX	O18-C16-C13	-2.91	113.39	119.00
3	A	402	WDX	O18-C16-N1	2.80	126.96	122.34
2	B	401	NAP	C3N-C2N-N1N	2.77	123.13	120.43
3	B	402	WDX	C14-C15-C12	2.69	121.71	118.40
3	B	402	WDX	C13-N9-C7	2.65	109.99	104.45
2	B	401	NAP	O7N-C7N-C3N	2.61	122.76	119.63
2	A	401	NAP	O5B-PA-O1A	2.54	119.01	109.07
3	A	402	WDX	C13-N9-C7	2.54	109.75	104.45
3	A	402	WDX	C5-C6-N1	2.49	114.61	110.82
2	B	401	NAP	C2B-C3B-C4B	2.48	107.37	101.99
3	B	402	WDX	C3-C2-N1	-2.43	107.13	110.82
3	B	402	WDX	C11-C8-C7	-2.42	104.16	106.27
3	B	402	WDX	C6-C5-C4	2.41	118.09	111.99
2	B	401	NAP	O4D-C4D-C3D	-2.30	100.57	105.11
2	B	401	NAP	C5A-C6A-N6A	2.26	123.78	120.35
2	B	401	NAP	O4D-C1D-C2D	-2.22	103.67	106.93
3	B	402	WDX	C14-C10-C7	-2.20	118.07	120.84
2	A	401	NAP	O3D-C3D-C2D	2.20	118.93	111.82
3	B	402	WDX	C6-N1-C2	2.10	116.66	112.62
2	A	401	NAP	O4D-C1D-C2D	-2.07	103.90	106.93

There are no chirality outliers.

All (5) torsion outliers are listed below:

Mol	Chain	Res	Type	Atoms
2	B	401	NAP	C4D-C5D-O5D-PN

Continued on next page...

Continued from previous page...

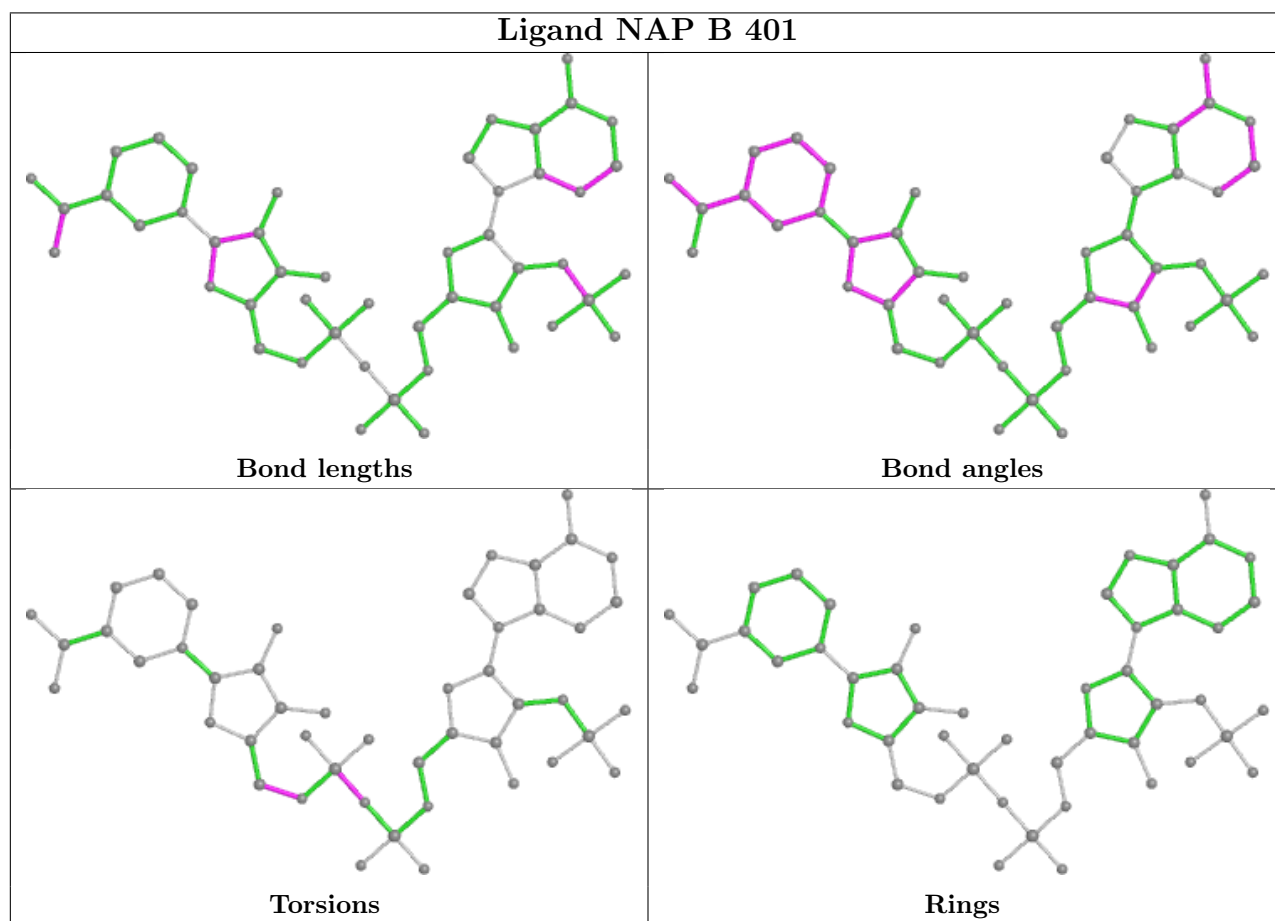
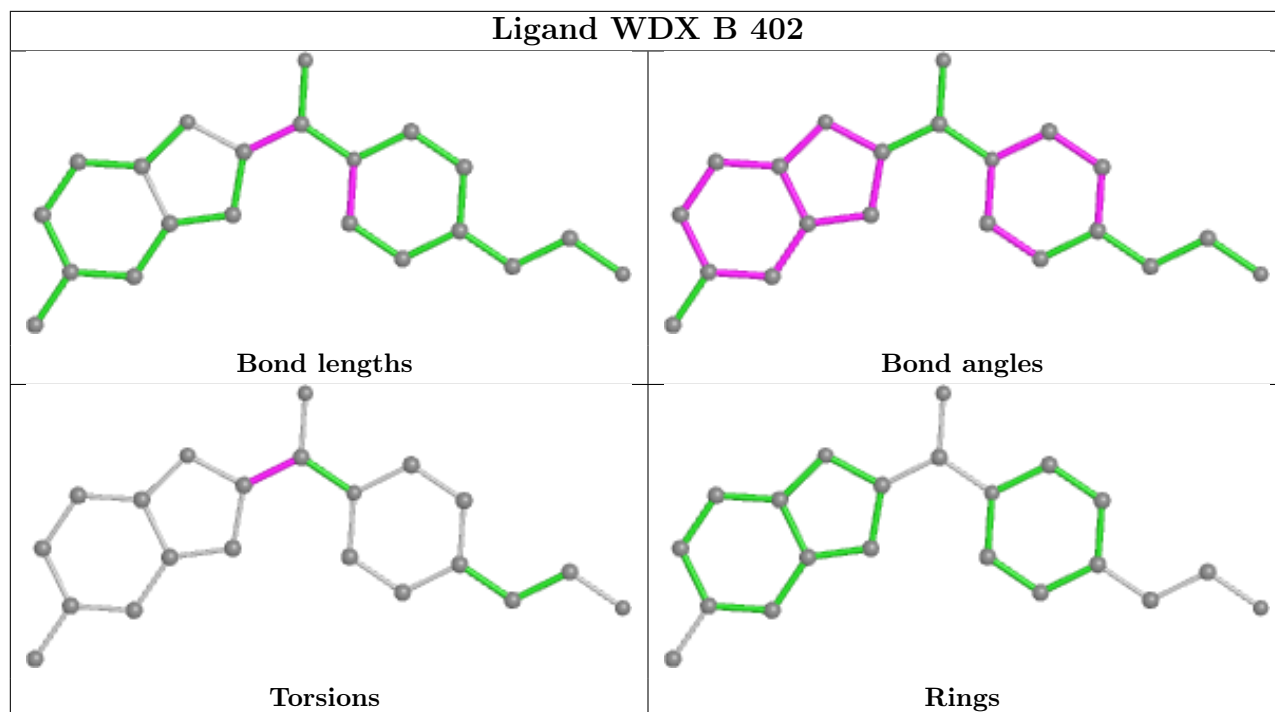
Mol	Chain	Res	Type	Atoms
2	A	401	NAP	PA-O3-PN-O5D
2	B	401	NAP	PA-O3-PN-O5D
2	A	401	NAP	C4D-C5D-O5D-PN
3	B	402	WDX	C11-C13-C16-O18

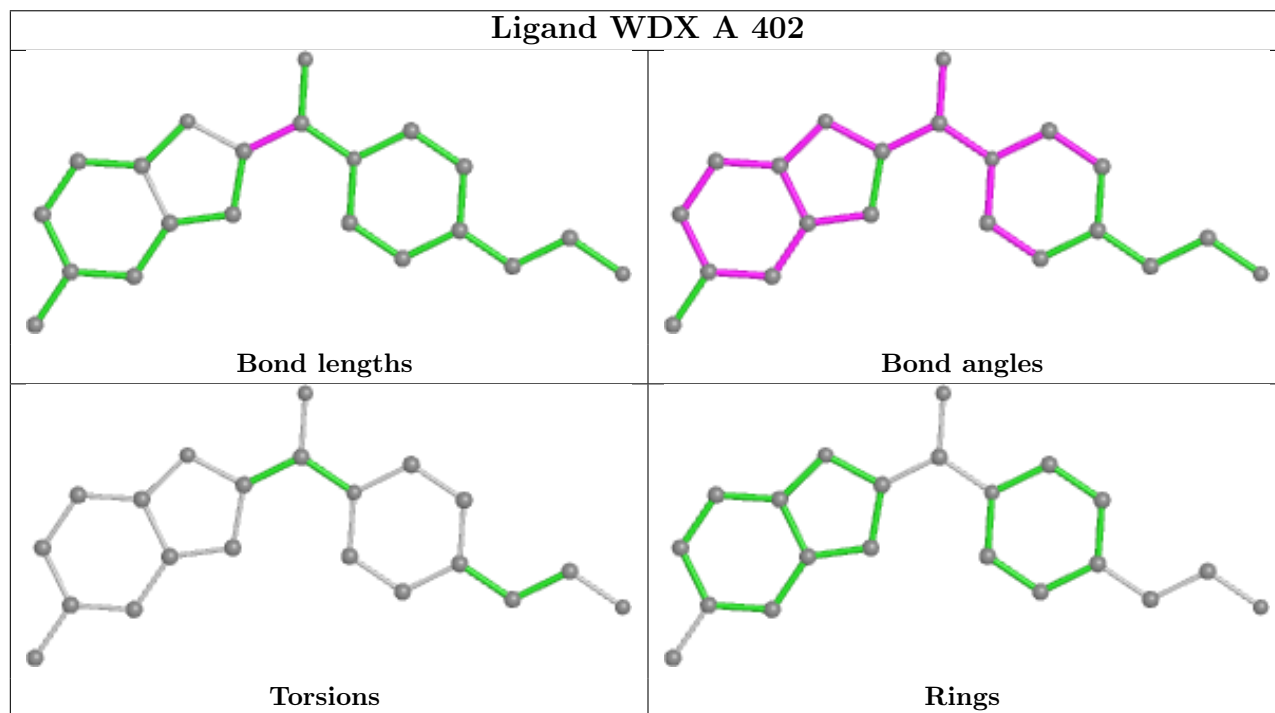
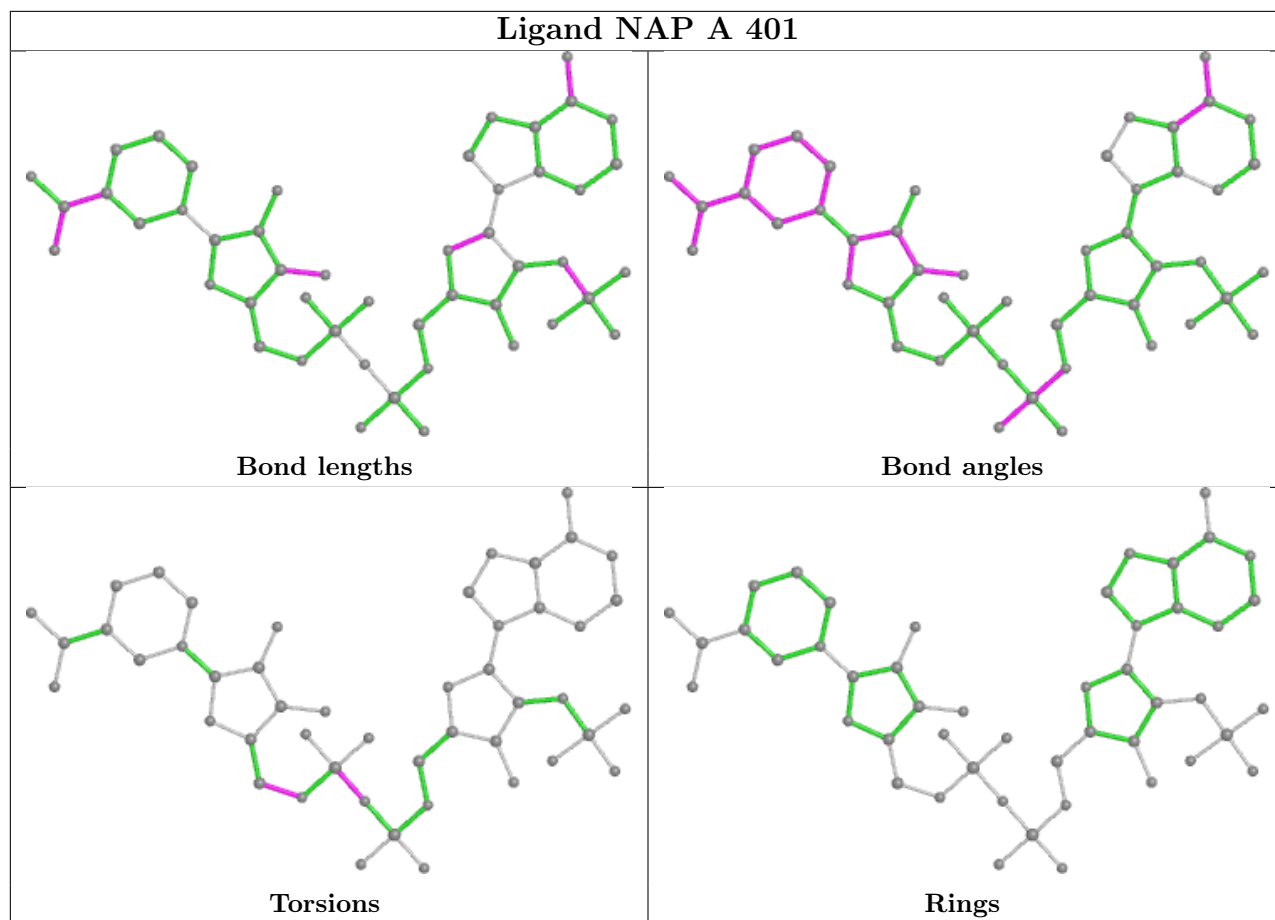
There are no ring outliers.

4 monomers are involved in 8 short contacts:

Mol	Chain	Res	Type	Clashes	Symm-Clashes
3	B	402	WDX	1	0
2	B	401	NAP	4	0
2	A	401	NAP	3	0
3	A	402	WDX	1	0

The following is a two-dimensional graphical depiction of Mogul quality analysis of bond lengths, bond angles, torsion angles, and ring geometry for all instances of the Ligand of Interest. In addition, ligands with molecular weight > 250 and outliers as shown on the validation Tables will also be included. For torsion angles, if less than 5% of the Mogul distribution of torsion angles is within 10 degrees of the torsion angle in question, then that torsion angle is considered an outlier. Any bond that is central to one or more torsion angles identified as an outlier by Mogul will be highlighted in the graph. For rings, the root-mean-square deviation (RMSD) between the ring in question and similar rings identified by Mogul is calculated over all ring torsion angles. If the average RMSD is greater than 60 degrees and the minimal RMSD between the ring in question and any Mogul-identified rings is also greater than 60 degrees, then that ring is considered an outlier. The outliers are highlighted in purple. The color gray indicates Mogul did not find sufficient equivalents in the CSD to analyse the geometry.





5.7 Other polymers [i](#)

There are no such residues in this entry.

5.8 Polymer linkage issues [i](#)

There are no chain breaks in this entry.

6 Fit of model and data

6.1 Protein, DNA and RNA chains

In the following table, the column labelled ‘#RSRZ > 2’ contains the number (and percentage) of RSRZ outliers, followed by percent RSRZ outliers for the chain as percentile scores relative to all X-ray entries and entries of similar resolution. The OWAB column contains the minimum, median, 95th percentile and maximum values of the occupancy-weighted average B-factor per residue. The column labelled ‘Q < 0.9’ lists the number of (and percentage) of residues with an average occupancy less than 0.9.

Mol	Chain	Analysed	<RSRZ>	#RSRZ>2	OWAB(Å ²)	Q<0.9
1	A	298/331 (90%)	0.63	32 (10%) 6 4	15, 27, 51, 67	0
1	B	302/331 (91%)	0.27	15 (4%) 28 26	15, 23, 39, 58	0
All	All	600/662 (90%)	0.45	47 (7%) 13 11	15, 25, 47, 67	0

All (47) RSRZ outliers are listed below:

Mol	Chain	Res	Type	RSRZ
1	A	310	SER	9.9
1	A	131	THR	6.9
1	A	125	GLY	6.8
1	B	310	SER	6.7
1	B	135	GLY	6.6
1	A	309	ASP	5.7
1	B	311	PHE	5.5
1	A	311	PHE	5.2
1	A	231	ASN	5.2
1	B	309	ASP	5.0
1	A	146	THR	4.9
1	A	141	ILE	4.8
1	A	128	LEU	4.3
1	A	138	ILE	3.8
1	A	308	SER	3.8
1	A	180	PRO	3.4
1	A	139	PHE	3.3
1	B	308	SER	3.2
1	B	136	LYS	3.2
1	A	181	GLY	3.1
1	A	307	ASN	2.9
1	A	182	LEU	2.8
1	A	249	LYS	2.7
1	A	130	PRO	2.6

Continued on next page...

Continued from previous page...

Mol	Chain	Res	Type	RSRZ
1	A	6	GLN	2.6
1	B	180	PRO	2.6
1	A	124	PRO	2.5
1	A	122	LEU	2.5
1	A	144	LEU	2.5
1	A	171	ARG	2.4
1	B	228	VAL	2.3
1	A	129	SER	2.3
1	A	201	LYS	2.3
1	B	132	ASP	2.3
1	B	231	ASN	2.3
1	A	230	PRO	2.2
1	B	31	ARG	2.2
1	B	229	ASP	2.2
1	A	233	PRO	2.1
1	B	307	ASN	2.1
1	B	204	ASP	2.1
1	A	291	GLU	2.1
1	A	173	LEU	2.1
1	A	142	VAL	2.1
1	A	288	LEU	2.1
1	B	10	LEU	2.1
1	A	246	LYS	2.0

6.2 Non-standard residues in protein, DNA, RNA chains [i](#)

There are no non-standard protein/DNA/RNA residues in this entry.

6.3 Carbohydrates [i](#)

There are no monosaccharides in this entry.

6.4 Ligands [i](#)

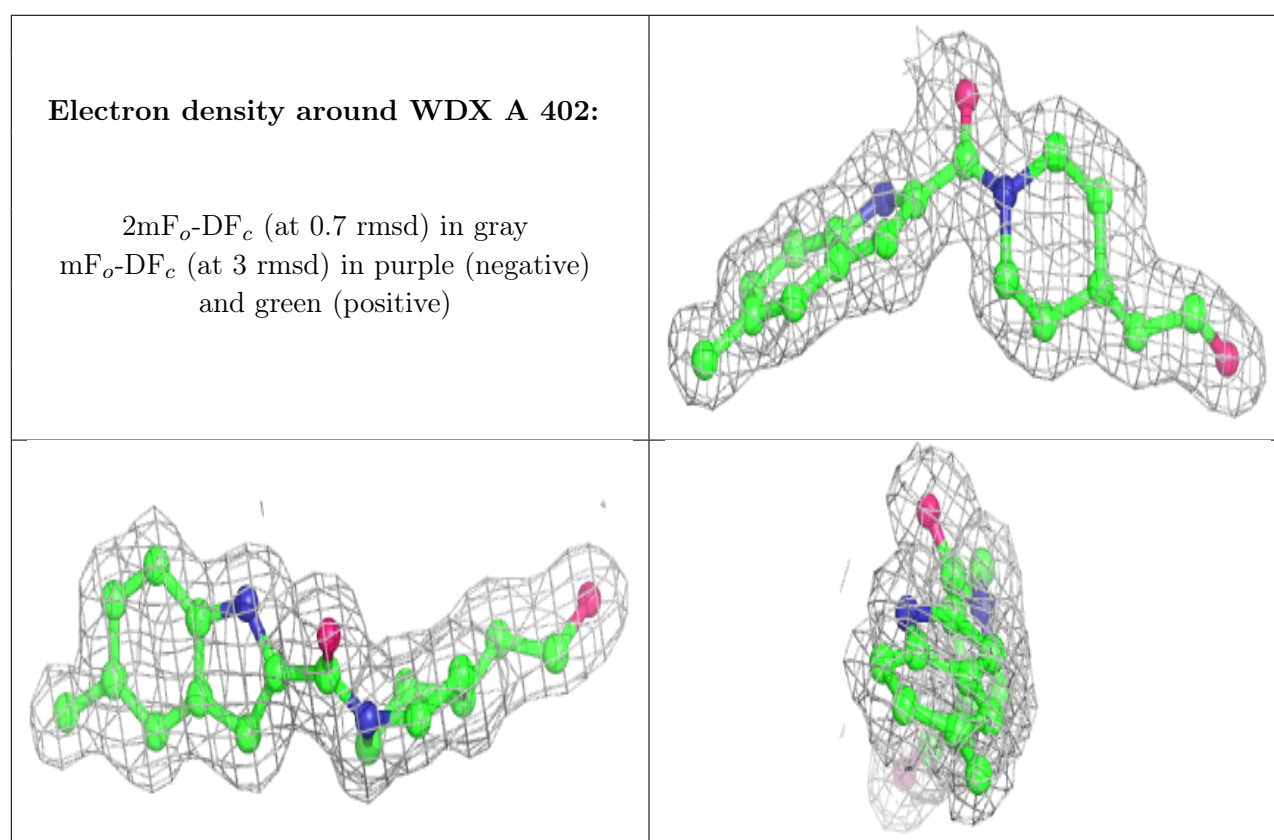
In the following table, the Atoms column lists the number of modelled atoms in the group and the number defined in the chemical component dictionary. The B-factors column lists the minimum, median, 95th percentile and maximum values of B factors of atoms in the group. The column labelled 'Q< 0.9' lists the number of atoms with occupancy less than 0.9.

Continued on next page...

Continued from previous page...

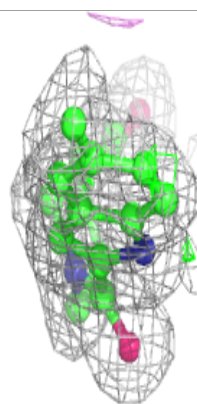
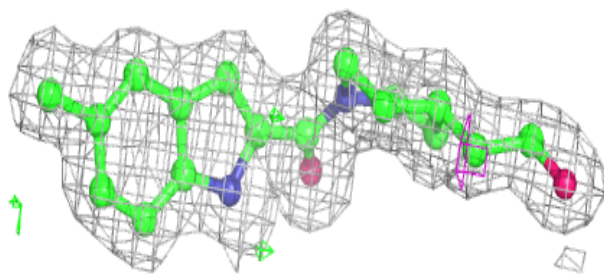
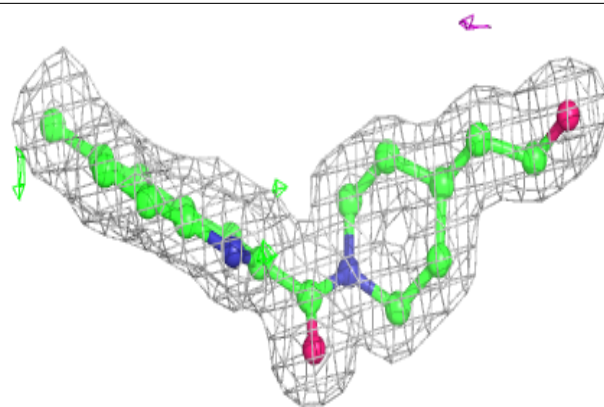
Mol	Type	Chain	Res	Atoms	RSCC	RSR	B-factors(\AA^2)	Q<0.9
3	WDX	A	402	21/21	0.91	0.10	22,25,30,35	0
3	WDX	B	402	21/21	0.93	0.10	16,19,23,30	0
2	NAP	A	401	48/48	0.95	0.08	16,21,26,28	0
2	NAP	B	401	48/48	0.96	0.08	13,17,20,24	0

The following is a graphical depiction of the model fit to experimental electron density of all instances of the Ligand of Interest. In addition, ligands with molecular weight > 250 and outliers as shown on the geometry validation Tables will also be included. Each fit is shown from different orientation to approximate a three-dimensional view.

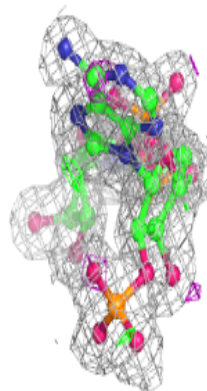
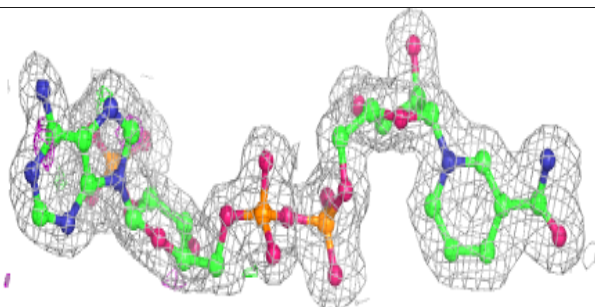
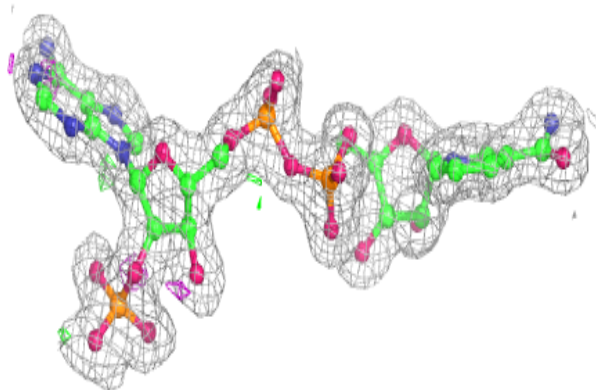


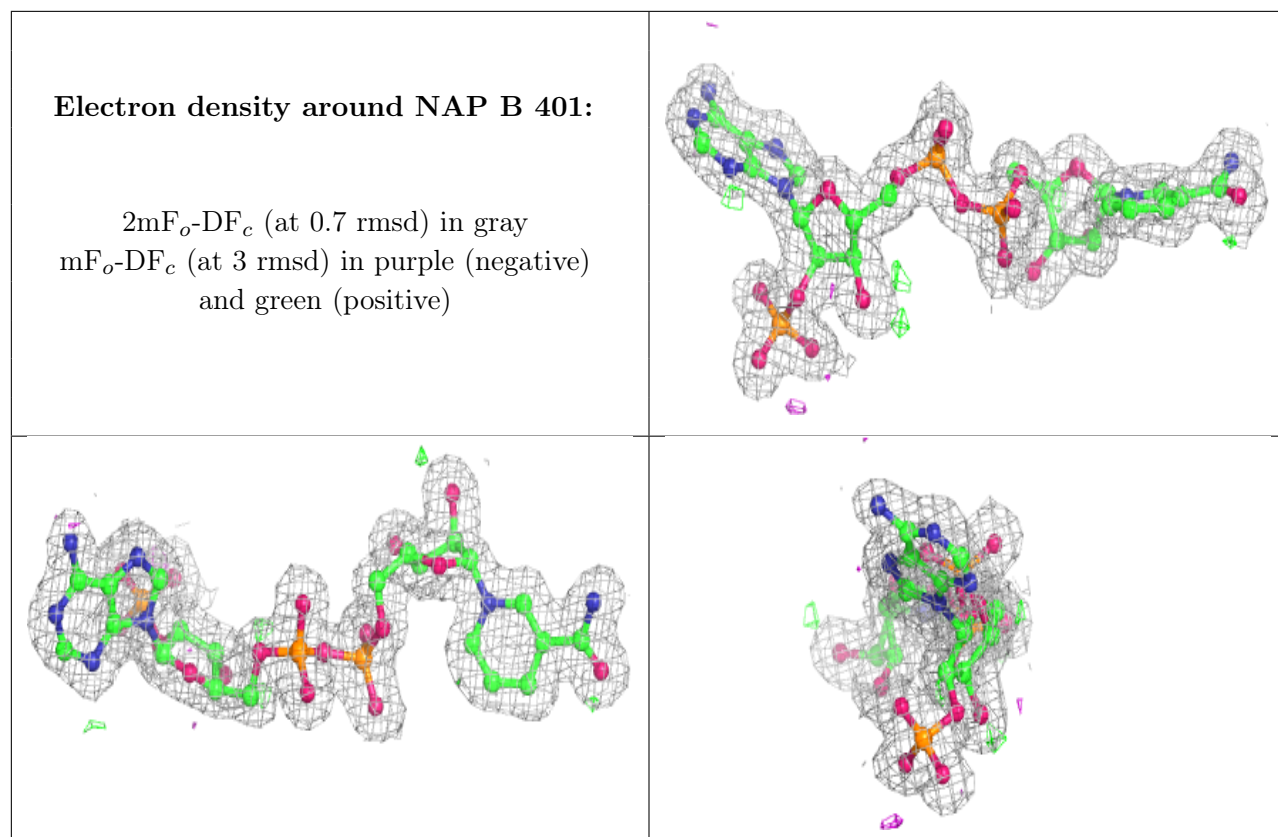
Electron density around WDX B 402:

$2mF_o-DF_c$ (at 0.7 rmsd) in gray
 mF_o-DF_c (at 3 rmsd) in purple (negative)
and green (positive)

**Electron density around NAP A 401:**

$2mF_o-DF_c$ (at 0.7 rmsd) in gray
 mF_o-DF_c (at 3 rmsd) in purple (negative)
and green (positive)





6.5 Other polymers [i](#)

There are no such residues in this entry.