



Full wwPDB X-ray Structure Validation Report ⓘ

Feb 15, 2018 – 09:48 pm GMT

PDB ID : 1WF3
Title : Crystal structure of GTP-binding protein TT1341 from *Thermus thermophilus* HB8
Authors : Kawazoe, M.; Hori-Takemoto, C.; Kaminishi, T.; Sekine, S.; Shirouzu, M.; Yokoyama, S.; RIKEN Structural Genomics/Proteomics Initiative (RSGI)
Deposited on : 2004-05-25
Resolution : 1.88 Å(reported)

This is a Full wwPDB X-ray Structure Validation Report for a publicly released PDB entry.

We welcome your comments at validation@mail.wwpdb.org

A user guide is available at

<https://www.wwpdb.org/validation/2017/XrayValidationReportHelp>

with specific help available everywhere you see the ⓘ symbol.

The following versions of software and data (see [references ⓘ](#)) were used in the production of this report:

MolProbity : 4.02b-467
Mogul : 1.7.3 (157068), CSD as539be (2018)
Xtrriage (Phenix) : **NOT EXECUTED**
EDS : **NOT EXECUTED**
Percentile statistics : 20171227.v01 (using entries in the PDB archive December 27th 2017)
Ideal geometry (proteins) : Engh & Huber (2001)
Ideal geometry (DNA, RNA) : Parkinson et al. (1996)
Validation Pipeline (wwPDB-VP) : trunk30686

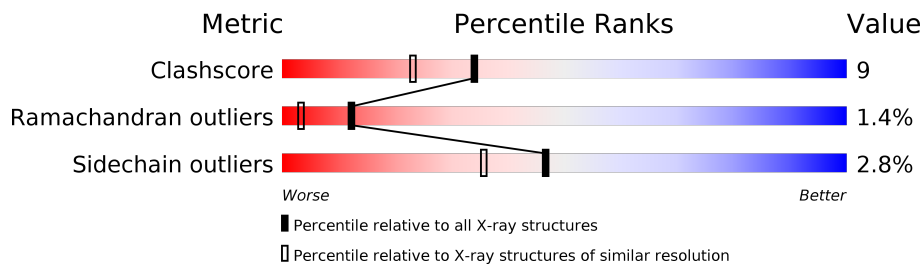
1 Overall quality at a glance

The following experimental techniques were used to determine the structure:

X-RAY DIFFRACTION

The reported resolution of this entry is 1.88 Å.


Percentile scores (ranging between 0-100) for global validation metrics of the entry are shown in the following graphic. The table shows the number of entries on which the scores are based.



Metric	Whole archive (#Entries)	Similar resolution (#Entries, resolution range(Å))
Clashscore	122078	9023 (1.90-1.86)
Ramachandran outliers	120005	8925 (1.90-1.86)
Sidechain outliers	119972	8925 (1.90-1.86)

The table below summarises the geometric issues observed across the polymeric chains and their fit to the electron density. The red, orange, yellow and green segments on the lower bar indicate the fraction of residues that contain outliers for ≥ 3 , 2, 1 and 0 types of geometric quality criteria. A grey segment represents the fraction of residues that are not modelled. The numeric value for each fraction is indicated below the corresponding segment, with a dot representing fractions $\leq 5\%$. The upper red bar (where present) indicates the fraction of residues that have poor fit to the electron density. The numeric value is given above the bar.

Note EDS was not executed.

Mol	Chain	Length	Quality of chain
1	A	301	 75% 22% ..

The following table lists non-polymeric compounds, carbohydrate monomers and non-standard residues in protein, DNA, RNA chains that are outliers for geometric or electron-density-fit criteria:

Mol	Type	Chain	Res	Chirality	Geometry	Clashes	Electron density
4	GOL	A	601	-	X	-	-
4	GOL	A	602	-	X	-	-

2 Entry composition [i](#)

There are 5 unique types of molecules in this entry. The entry contains 2576 atoms, of which 0 are hydrogens and 0 are deuteriums.

In the tables below, the ZeroOcc column contains the number of atoms modelled with zero occupancy, the AltConf column contains the number of residues with at least one atom in alternate conformation and the Trace column contains the number of residues modelled with at most 2 atoms.

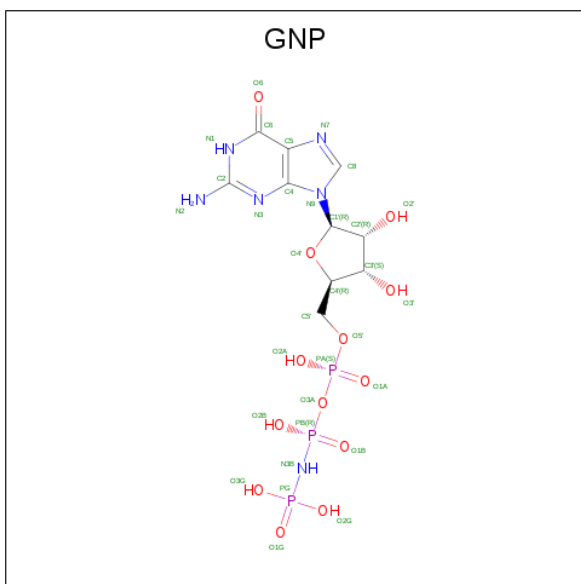
- Molecule 1 is a protein called GTP-binding protein.

Mol	Chain	Residues	Atoms					ZeroOcc	AltConf	Trace
			Total	C	N	O	S			
1	A	296	2353	1513	403	431	6	0	0	0

- Molecule 2 is MAGNESIUM ION (three-letter code: MG) (formula: Mg).

Mol	Chain	Residues	Atoms		ZeroOcc	AltConf
			Total	Mg		
2	A	1	1	1	0	0

- Molecule 3 is PHOSPHOAMINOPHOSPHONIC ACID-GUANYLATE ESTER (three-letter code: GNP) (formula: C₁₀H₁₇N₆O₁₃P₃).



Mol	Chain	Residues	Atoms				ZeroOcc	AltConf	
			Total	C	N	O			P
3	A	1	32	10	6	13	3	0	0

- Molecule 4 is GLYCEROL (three-letter code: GOL) (formula: $C_3H_8O_3$).



Mol	Chain	Residues	Atoms		ZeroOcc	AltConf
4	A	1	Total	C O	0	0
			6	3 3		
4	A	1	Total	C O	0	0
			6	3 3		

- Molecule 5 is water.

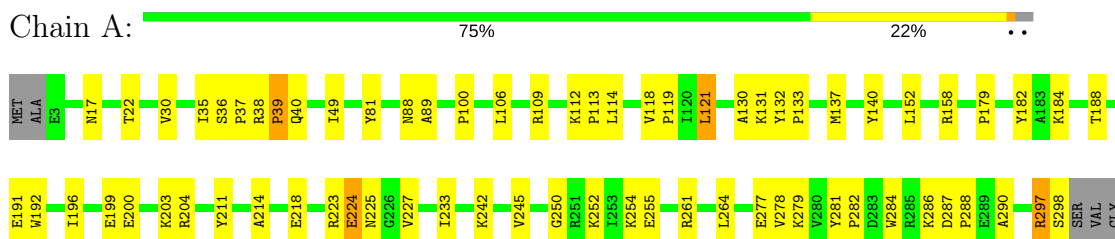
Mol	Chain	Residues	Atoms		ZeroOcc	AltConf
5	A	178	Total	O	0	0
			178	178		

3 Residue-property plots [i](#)

These plots are drawn for all protein, RNA and DNA chains in the entry. The first graphic for a chain summarises the proportions of the various outlier classes displayed in the second graphic. The second graphic shows the sequence view annotated by issues in geometry and electron density. Residues are color-coded according to the number of geometric quality criteria for which they contain at least one outlier: green = 0, yellow = 1, orange = 2 and red = 3 or more. A red dot above a residue indicates a poor fit to the electron density ($RSRZ > 2$). Stretches of 2 or more consecutive residues without any outlier are shown as a green connector. Residues present in the sample, but not in the model, are shown in grey.

Note EDS was not executed.

- Molecule 1: GTP-binding protein



4 Data and refinement statistics

Xtrriage (Phenix) and EDS were not executed - this section is therefore incomplete.

Property	Value	Source
Space group	P 41	Depositor
Cell constants a, b, c, α , β , γ	68.63Å 68.63Å 86.40Å 90.00° 90.00° 90.00°	Depositor
Resolution (Å)	31.89 – 1.88	Depositor
% Data completeness (in resolution range)	99.4 (31.89-1.88)	Depositor
R_{merge}	(Not available)	Depositor
R_{sym}	(Not available)	Depositor
Refinement program	CNS 1.1	Depositor
R, R_{free}	0.200 , 0.227	Depositor
Estimated twinning fraction	No twinning to report.	Xtrriage
Total number of atoms	2576	wwPDB-VP
Average B, all atoms (Å ²)	41.0	wwPDB-VP

5 Model quality [i](#)

5.1 Standard geometry [i](#)

Bond lengths and bond angles in the following residue types are not validated in this section: GOL, GNP, MG

The Z score for a bond length (or angle) is the number of standard deviations the observed value is removed from the expected value. A bond length (or angle) with $|Z| > 5$ is considered an outlier worth inspection. RMSZ is the root-mean-square of all Z scores of the bond lengths (or angles).

Mol	Chain	Bond lengths		Bond angles	
		RMSZ	# Z >5	RMSZ	# Z >5
1	A	0.41	0/2403	0.65	1/3257 (0.0%)

There are no bond length outliers.

All (1) bond angle outliers are listed below:

Mol	Chain	Res	Type	Atoms	Z	Observed(°)	Ideal(°)
1	A	121	LEU	CA-CB-CG	5.58	128.14	115.30

There are no chirality outliers.

There are no planarity outliers.

5.2 Too-close contacts [i](#)

In the following table, the Non-H and H(model) columns list the number of non-hydrogen atoms and hydrogen atoms in the chain respectively. The H(added) column lists the number of hydrogen atoms added and optimized by MolProbity. The Clashes column lists the number of clashes within the asymmetric unit, whereas Symm-Clashes lists symmetry related clashes.

Mol	Chain	Non-H	H(model)	H(added)	Clashes	Symm-Clashes
1	A	2353	0	2415	44	0
2	A	1	0	0	0	0
3	A	32	0	13	0	0
4	A	12	0	8	1	0
5	A	178	0	0	3	0
All	All	2576	0	2436	44	0

The all-atom clashscore is defined as the number of clashes found per 1000 atoms (including hydrogen atoms). The all-atom clashscore for this structure is 9.

All (44) close contacts within the same asymmetric unit are listed below, sorted by their clash magnitude.

Atom-1	Atom-2	Interatomic distance (Å)	Clash overlap (Å)
1:A:223:ARG:HG2	1:A:224:GLU:H	1.44	0.81
1:A:22:THR:HA	1:A:35:ILE:HD11	1.78	0.65
1:A:200:GLU:OE1	1:A:204:ARG:NH1	2.25	0.65
1:A:137:MET:O	1:A:137:MET:HE3	2.02	0.59
1:A:100:PRO:HG3	1:A:140:TYR:CD1	2.38	0.58
1:A:81:TYR:HB2	4:A:601:GOL:O3	2.04	0.57
1:A:179:PRO:HG2	1:A:182:TYR:HB2	1.89	0.55
1:A:223:ARG:CG	1:A:224:GLU:H	2.15	0.54
1:A:30:VAL:HG21	1:A:184:LYS:HG3	1.90	0.54
1:A:152:LEU:HD12	1:A:152:LEU:C	2.28	0.54
1:A:130:ALA:HB3	1:A:133:PRO:HG3	1.90	0.54
1:A:223:ARG:HG2	1:A:224:GLU:N	2.19	0.53
1:A:204:ARG:O	1:A:252:LYS:HE2	2.09	0.53
1:A:106:LEU:HD12	1:A:109:ARG:NH1	2.24	0.52
1:A:158:ARG:HG3	5:A:813:HOH:O	2.09	0.52
1:A:261:ARG:HD3	5:A:792:HOH:O	2.09	0.52
1:A:250:GLY:O	1:A:254:LYS:HG3	2.10	0.51
1:A:114:LEU:HD23	1:A:118:VAL:HG11	1.92	0.50
1:A:37:PRO:HD2	1:A:203:LYS:HG2	1.95	0.49
1:A:35:ILE:O	1:A:199:GLU:HG3	2.14	0.48
1:A:287:ASP:HB3	1:A:290:ALA:HB3	1.94	0.48
1:A:188:THR:OG1	1:A:191:GLU:HG3	2.13	0.48
1:A:39:PRO:HD2	1:A:211:TYR:OH	2.14	0.47
1:A:224:GLU:HB2	1:A:227:VAL:HB	1.95	0.47
1:A:218:GLU:OE1	1:A:233:ILE:HD11	2.14	0.47
1:A:223:ARG:HG2	1:A:224:GLU:HG3	1.97	0.47
1:A:242:LYS:HE2	1:A:278:VAL:O	2.15	0.47
1:A:245:VAL:O	1:A:252:LYS:HB3	2.16	0.46
1:A:38:ARG:HA	1:A:39:PRO:HD3	1.72	0.46
1:A:49:ILE:N	1:A:49:ILE:HD12	2.32	0.45
1:A:277:GLU:CD	1:A:279:LYS:NZ	2.69	0.45
1:A:204:ARG:HD3	1:A:255:GLU:OE2	2.17	0.44
1:A:114:LEU:HB3	1:A:118:VAL:CG1	2.49	0.43
1:A:88:ASN:O	1:A:119:PRO:HD2	2.18	0.43
1:A:131:LYS:C	1:A:133:PRO:HD3	2.37	0.43
1:A:89:ALA:HA	1:A:118:VAL:HG22	2.01	0.42
1:A:192:TRP:O	1:A:196:ILE:HG12	2.19	0.42
1:A:214:ALA:HB2	1:A:284:TRP:CZ2	2.55	0.42
1:A:22:THR:HA	1:A:35:ILE:CD1	2.48	0.42
1:A:112:LYS:N	1:A:113:PRO:HD2	2.35	0.42

Continued on next page...

Continued from previous page...

Atom-1	Atom-2	Interatomic distance (Å)	Clash overlap (Å)
1:A:286:LYS:O	1:A:288:PRO:HD3	2.20	0.41
1:A:297:ARG:O	1:A:298:SER:HB2	2.21	0.41
1:A:297:ARG:HD3	5:A:877:HOH:O	2.20	0.40
1:A:132:TYR:N	1:A:132:TYR:CD1	2.88	0.40

There are no symmetry-related clashes.

5.3 Torsion angles [i](#)

5.3.1 Protein backbone [i](#)

In the following table, the Percentiles column shows the percent Ramachandran outliers of the chain as a percentile score with respect to all X-ray entries followed by that with respect to entries of similar resolution.

The Analysed column shows the number of residues for which the backbone conformation was analysed, and the total number of residues.

Mol	Chain	Analysed	Favoured	Allowed	Outliers	Percentiles
1	A	294/301 (98%)	286 (97%)	4 (1%)	4 (1%)	12 3

All (4) Ramachandran outliers are listed below:

Mol	Chain	Res	Type
1	A	224	GLU
1	A	40	GLN
1	A	282	PRO
1	A	39	PRO

5.3.2 Protein sidechains [i](#)

In the following table, the Percentiles column shows the percent sidechain outliers of the chain as a percentile score with respect to all X-ray entries followed by that with respect to entries of similar resolution.

The Analysed column shows the number of residues for which the sidechain conformation was analysed, and the total number of residues.

Mol	Chain	Analysed	Rotameric	Outliers	Percentiles
1	A	249/252 (99%)	242 (97%)	7 (3%)	47 36

All (7) residues with a non-rotameric sidechain are listed below:

Mol	Chain	Res	Type
1	A	17	ASN
1	A	36	SER
1	A	121	LEU
1	A	225	ASN
1	A	264	LEU
1	A	281	TYR
1	A	297	ARG

Some sidechains can be flipped to improve hydrogen bonding and reduce clashes. All (1) such sidechains are listed below:

Mol	Chain	Res	Type
1	A	225	ASN

5.3.3 RNA [i](#)

There are no RNA molecules in this entry.

5.4 Non-standard residues in protein, DNA, RNA chains [i](#)

There are no non-standard protein/DNA/RNA residues in this entry.

5.5 Carbohydrates [i](#)

There are no carbohydrates in this entry.

5.6 Ligand geometry [i](#)

Of 4 ligands modelled in this entry, 1 is monoatomic - leaving 3 for Mogul analysis.

In the following table, the Counts columns list the number of bonds (or angles) for which Mogul statistics could be retrieved, the number of bonds (or angles) that are observed in the model and the number of bonds (or angles) that are defined in the Chemical Component Dictionary. The Link column lists molecule types, if any, to which the group is linked. The Z score for a bond length (or angle) is the number of standard deviations the observed value is removed from the expected value. A bond length (or angle) with $|Z| > 2$ is considered an outlier worth inspection. RMSZ is the root-mean-square of all Z scores of the bond lengths (or angles).

Mol	Type	Chain	Res	Link	Bond lengths			Bond angles		
					Counts	RMSZ	# Z > 2	Counts	RMSZ	# Z > 2
3	GNP	A	501	2	27,34,34	2.66	11 (40%)	30,54,54	2.16	5 (16%)
4	GOL	A	601	-	5,5,5	4.79	5 (100%)	5,5,5	5.68	3 (60%)
4	GOL	A	602	-	5,5,5	4.82	5 (100%)	5,5,5	5.64	3 (60%)

In the following table, the Chirals column lists the number of chiral outliers, the number of chiral centers analysed, the number of these observed in the model and the number defined in the Chemical Component Dictionary. Similar counts are reported in the Torsion and Rings columns. '-' means no outliers of that kind were identified.

Mol	Type	Chain	Res	Link	Chirals	Torsions	Rings
3	GNP	A	501	2	-	0/16/38/38	0/3/3/3
4	GOL	A	601	-	-	0/4/4/4	0/0/0/0
4	GOL	A	602	-	-	0/4/4/4	0/0/0/0

All (21) bond length outliers are listed below:

Mol	Chain	Res	Type	Atoms	Z	Observed(Å)	Ideal(Å)
4	A	602	GOL	C3-C2	-8.27	1.20	1.52
4	A	601	GOL	C3-C2	-8.12	1.20	1.52
3	A	501	GNP	C4-N9	-7.27	1.38	1.47
3	A	501	GNP	C5-C6	-4.50	1.45	1.52
4	A	601	GOL	C1-C2	-3.26	1.39	1.52
4	A	601	GOL	O2-C2	-2.95	1.34	1.43
4	A	602	GOL	O2-C2	-2.94	1.34	1.43
4	A	602	GOL	C1-C2	-2.92	1.40	1.52
3	A	501	GNP	PG-O3G	-2.68	1.49	1.56
3	A	501	GNP	C8-N9	-2.62	1.39	1.46
3	A	501	GNP	PG-O2G	-2.37	1.50	1.56
3	A	501	GNP	PB-O2B	-2.27	1.50	1.56
3	A	501	GNP	C5-C4	-2.26	1.38	1.52
3	A	501	GNP	PB-O3A	2.00	1.61	1.59
3	A	501	GNP	PG-N3B	2.64	1.70	1.63
4	A	602	GOL	O3-C3	3.02	1.55	1.42
4	A	601	GOL	O3-C3	3.21	1.56	1.42
3	A	501	GNP	PG-O1G	3.52	1.50	1.46
4	A	601	GOL	O1-C1	4.37	1.60	1.42
4	A	602	GOL	O1-C1	4.64	1.62	1.42
3	A	501	GNP	C6-N1	7.01	1.44	1.33

All (11) bond angle outliers are listed below:

Mol	Chain	Res	Type	Atoms	Z	Observed(°)	Ideal(°)
3	A	501	GNP	C5-C6-N1	-5.32	111.93	118.27
3	A	501	GNP	O6-C6-N1	-3.39	118.20	122.71
3	A	501	GNP	O1G-PG-N3B	-2.79	107.62	111.79
4	A	601	GOL	O1-C1-C2	3.13	125.27	110.11
4	A	602	GOL	O1-C1-C2	3.33	126.28	110.11
3	A	501	GNP	O6-C6-C5	4.87	129.87	119.82
4	A	602	GOL	O2-C2-C3	6.53	138.81	109.00
4	A	601	GOL	O2-C2-C3	6.60	139.13	109.00
3	A	501	GNP	C4-C5-N7	6.90	111.61	102.46
4	A	602	GOL	O3-C3-C2	10.22	159.69	110.11
4	A	601	GOL	O3-C3-C2	10.36	160.38	110.11

There are no chirality outliers.

There are no torsion outliers.

There are no ring outliers.

1 monomer is involved in 1 short contact:

Mol	Chain	Res	Type	Clashes	Symm-Clashes
4	A	601	GOL	1	0

5.7 Other polymers [i](#)

There are no such residues in this entry.

5.8 Polymer linkage issues [i](#)

There are no chain breaks in this entry.

6 Fit of model and data [i](#)

6.1 Protein, DNA and RNA chains [i](#)

EDS was not executed - this section is therefore empty.

6.2 Non-standard residues in protein, DNA, RNA chains [i](#)

EDS was not executed - this section is therefore empty.

6.3 Carbohydrates [i](#)

EDS was not executed - this section is therefore empty.

6.4 Ligands [i](#)

EDS was not executed - this section is therefore empty.

6.5 Other polymers [i](#)

EDS was not executed - this section is therefore empty.