



# Full wwPDB X-ray Structure Validation Report ⓘ

Aug 17, 2022 – 02:13 PM EDT

PDB ID : 3WFD  
Title : Reduced and acetaldoxime-bound cytochrome c-dependent nitric oxide reductase (cNOR) from *Pseudomonas aeruginosa* in complex with antibody fragment  
Authors : Sato, N.; Ishii, S.; Hino, T.; Sugimoto, H.; Fukumori, Y.; Shiro, Y.; Tosha, T.  
Deposited on : 2013-07-18  
Resolution : 2.30 Å(reported)

This is a Full wwPDB X-ray Structure Validation Report for a publicly released PDB entry.

We welcome your comments at [validation@mail.wwpdb.org](mailto:validation@mail.wwpdb.org)

A user guide is available at

<https://www.wwpdb.org/validation/2017/XrayValidationReportHelp>

with specific help available everywhere you see the ⓘ symbol.

The types of validation reports are described at <http://www.wwpdb.org/validation/2017/FAQs#types>.

---

The following versions of software and data (see [references ⓘ](#)) were used in the production of this report:

MolProbity : 4.02b-467  
Mogul : 1.8.5 (274361), CSD as541be (2020)  
Xtriage (Phenix) : 1.13  
EDS : 2.29  
buster-report : 1.1.7 (2018)  
Percentile statistics : 20191225.v01 (using entries in the PDB archive December 25th 2019)  
Refmac : 5.8.0158  
CCP4 : 7.0.044 (Gargrove)  
Ideal geometry (proteins) : Engh & Huber (2001)  
Ideal geometry (DNA, RNA) : Parkinson et al. (1996)  
Validation Pipeline (wwPDB-VP) : 2.29

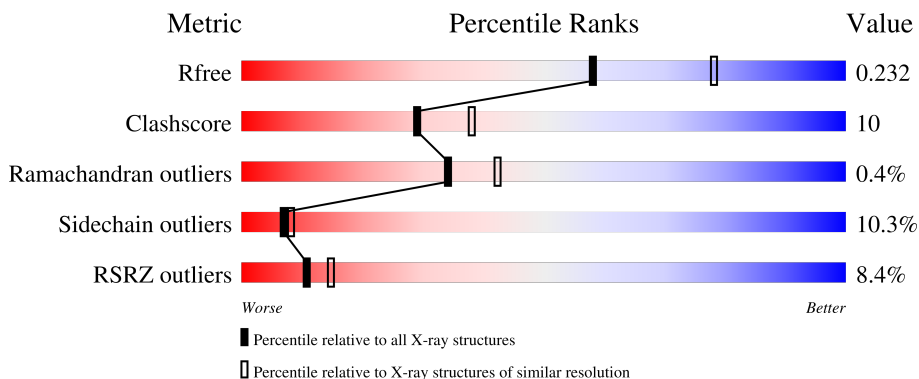
# 1 Overall quality at a glance

The following experimental techniques were used to determine the structure:

*X-RAY DIFFRACTION*

The reported resolution of this entry is 2.30 Å.

Percentile scores (ranging between 0-100) for global validation metrics of the entry are shown in the following graphic. The table shows the number of entries on which the scores are based.



Metric	Whole archive (#Entries)	Similar resolution (#Entries, resolution range(Å))
$R_{free}$	130704	5042 (2.30-2.30)
Clashscore	141614	5643 (2.30-2.30)
Ramachandran outliers	138981	5575 (2.30-2.30)
Sidechain outliers	138945	5575 (2.30-2.30)
RSRZ outliers	127900	4938 (2.30-2.30)

The table below summarises the geometric issues observed across the polymeric chains and their fit to the electron density. The red, orange, yellow and green segments of the lower bar indicate the fraction of residues that contain outliers for  $\geq 3$ , 2, 1 and 0 types of geometric quality criteria respectively. A grey segment represents the fraction of residues that are not modelled. The numeric value for each fraction is indicated below the corresponding segment, with a dot representing fractions  $\leq 5\%$ . The upper red bar (where present) indicates the fraction of residues that have poor fit to the electron density. The numeric value is given above the bar.

Mol	Chain	Length	Quality of chain
1	L	213	 77% 21%
2	H	225	 82% 14%
3	B	465	 72% 19% 5%
4	C	146	 82% 12%

The following table lists non-polymeric compounds, carbohydrate monomers and non-standard

residues in protein, DNA, RNA chains that are outliers for geometric or electron-density-fit criteria:

Mol	Type	Chain	Res	Chirality	Geometry	Clashes	Electron density
7	AXO	B	804	-	X	-	-

## 2 Entry composition [i](#)

There are 11 unique types of molecules in this entry. The entry contains 8556 atoms, of which 0 are hydrogens and 0 are deuteriums.

In the tables below, the ZeroOcc column contains the number of atoms modelled with zero occupancy, the AltConf column contains the number of residues with at least one atom in alternate conformation and the Trace column contains the number of residues modelled with at most 2 atoms.

- Molecule 1 is a protein called antibody fab fragment light chain.

Mol	Chain	Residues	Atoms					ZeroOcc	AltConf	Trace
			Total	C	N	O	S			
1	L	213	1669	1047	277	338	7	0	0	0

- Molecule 2 is a protein called antibody fab fragment heavy chain.

Mol	Chain	Residues	Atoms					ZeroOcc	AltConf	Trace
			Total	C	N	O	S			
2	H	225	1692	1065	280	338	9	0	0	0

- Molecule 3 is a protein called Nitric oxide reductase subunit B.

Mol	Chain	Residues	Atoms					ZeroOcc	AltConf	Trace
			Total	C	N	O	S			
3	B	449	3576	2416	563	572	25	0	0	0

There is a discrepancy between the modelled and reference sequences:

Chain	Residue	Modelled	Actual	Comment	Reference
B	?	-	ARG	deletion	UNP Q59647

- Molecule 4 is a protein called Nitric oxide reductase subunit C.

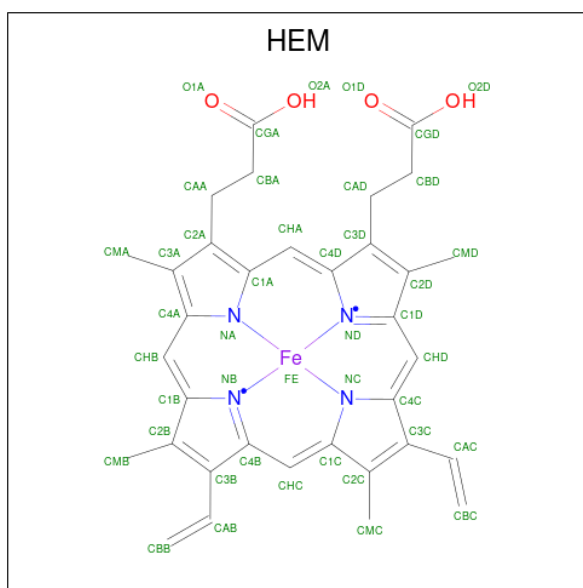
Mol	Chain	Residues	Atoms					ZeroOcc	AltConf	Trace
			Total	C	N	O	S			
4	C	142	1123	720	195	202	6	0	0	0

There is a discrepancy between the modelled and reference sequences:

Chain	Residue	Modelled	Actual	Comment	Reference
C	100	LYS	ASN	conflict	UNP Q59646

- Molecule 5 is PROTOPORPHYRIN IX CONTAINING FE (three-letter code: HEM) (for-

mula:  $C_{34}H_{32}FeN_4O_4$ ).

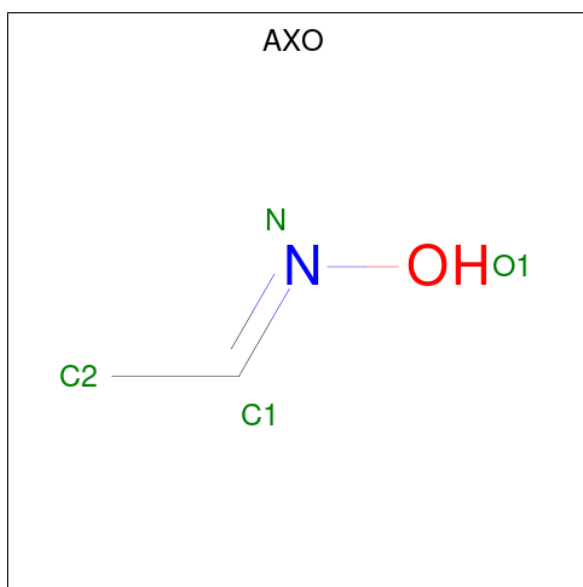


Mol	Chain	Residues	Atoms				ZeroOcc	AltConf	
5	B	1	Total	C	Fe	N	O	0	0
			43	34	1	4	4		
5	B	1	Total	C	Fe	N	O	0	0
			43	34	1	4	4		

- Molecule 6 is FE (III) ION (three-letter code: FE) (formula: Fe).

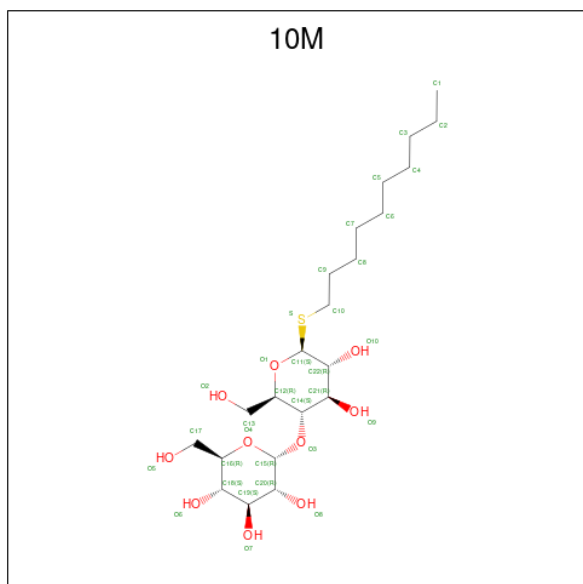
Mol	Chain	Residues	Atoms		ZeroOcc	AltConf
6	B	1	Total	Fe	0	0
			1	1		

- Molecule 7 is (1E)-N-hydroxyethanimine (three-letter code: AXO) (formula:  $C_2H_5NO$ ).



Mol	Chain	Residues	Atoms				ZeroOcc	AltConf
			Total	C	N	O		
7	B	1	4	2	1	1	0	0

- Molecule 8 is decyl 4-O-alpha-D-glucopyranosyl-1-thio-beta-D-glucopyranoside (three-letter code: 10M) (formula: C<sub>22</sub>H<sub>42</sub>O<sub>10</sub>S).

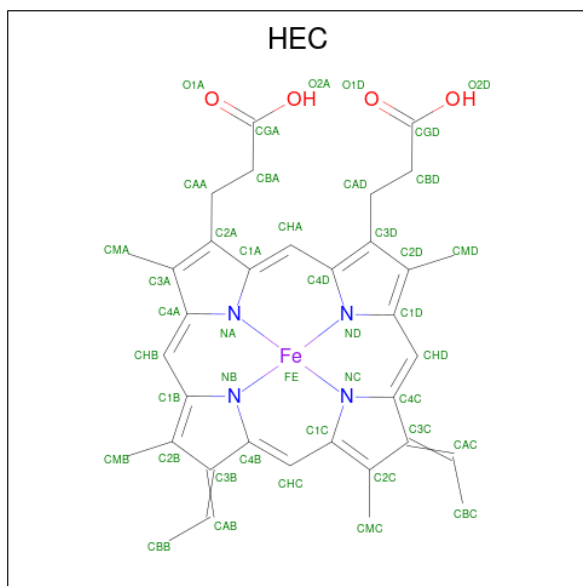


Mol	Chain	Residues	Atoms				ZeroOcc	AltConf
			Total	C	O	S		
8	B	1	33	22	10	1	0	0
8	B	1	33	22	10	1	0	0

- Molecule 9 is CALCIUM ION (three-letter code: CA) (formula: Ca).

Mol	Chain	Residues	Atoms	ZeroOcc	AltConf
9	B	1	Total Ca 1 1	0	0

- Molecule 10 is HEME C (three-letter code: HEC) (formula:  $C_{34}H_{34}FeN_4O_4$ ).



Mol	Chain	Residues	Atoms	ZeroOcc	AltConf
10	C	1	Total C Fe N O 43 34 1 4 4	0	0

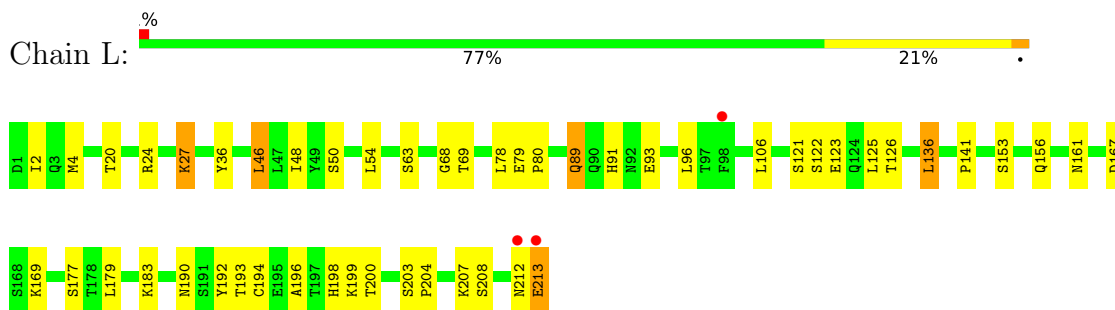
- Molecule 11 is water.

Mol	Chain	Residues	Atoms	ZeroOcc	AltConf
11	L	94	Total O 94 94	0	0
11	H	100	Total O 100 100	0	0
11	B	53	Total O 53 53	0	0
11	C	48	Total O 48 48	0	0

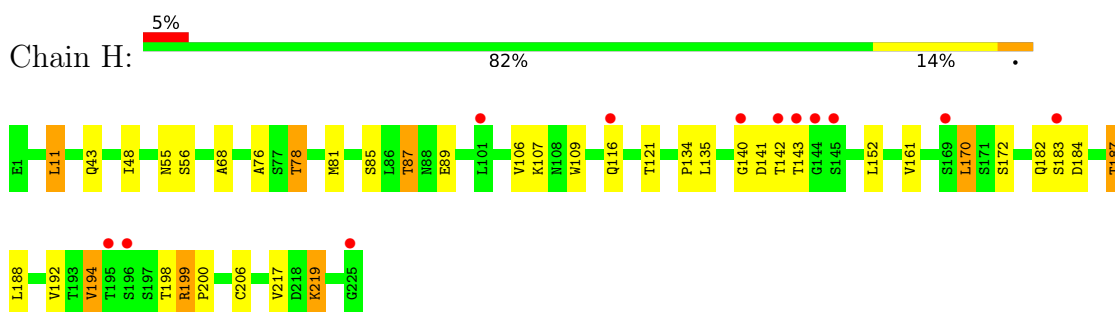
### 3 Residue-property plots [i](#)

These plots are drawn for all protein, RNA, DNA and oligosaccharide chains in the entry. The first graphic for a chain summarises the proportions of the various outlier classes displayed in the second graphic. The second graphic shows the sequence view annotated by issues in geometry and electron density. Residues are color-coded according to the number of geometric quality criteria for which they contain at least one outlier: green = 0, yellow = 1, orange = 2 and red = 3 or more. A red dot above a residue indicates a poor fit to the electron density ( $RSRZ > 2$ ). Stretches of 2 or more consecutive residues without any outlier are shown as a green connector. Residues present in the sample, but not in the model, are shown in grey.

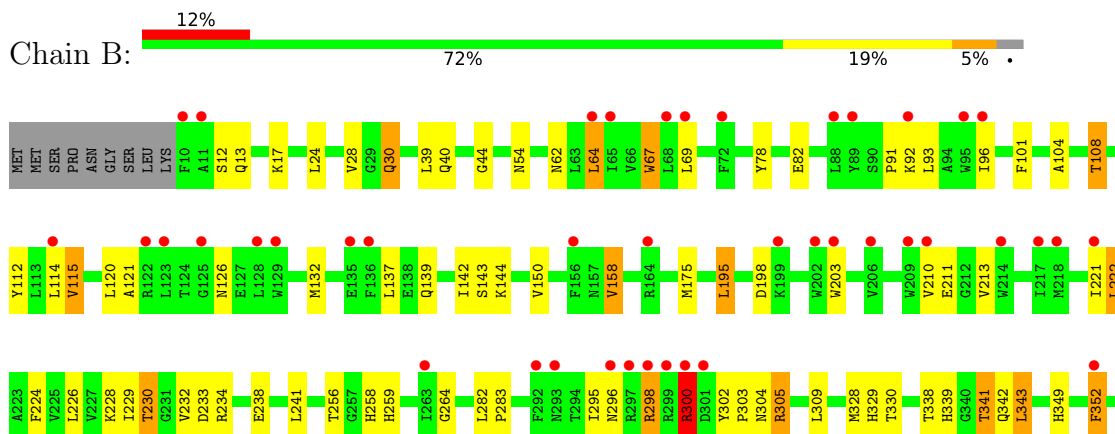
- Molecule 1: antibody fab fragment light chain



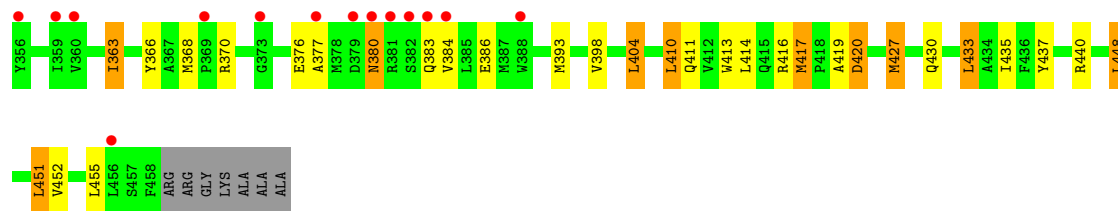
- Molecule 2: antibody fab fragment heavy chain



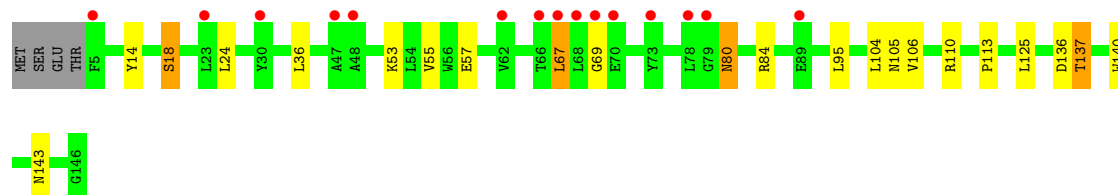
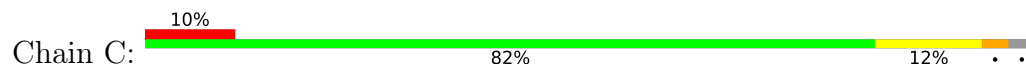
- Molecule 3: Nitric oxide reductase subunit B







- Molecule 4: Nitric oxide reductase subunit C



## 4 Data and refinement statistics

Property	Value	Source
Space group	P 21 21 21	Depositor
Cell constants a, b, c, $\alpha$ , $\beta$ , $\gamma$	90.93Å 106.75Å 196.44Å 90.00° 90.00° 90.00°	Depositor
Resolution (Å)	33.38 – 2.30 33.36 – 2.30	Depositor EDS
% Data completeness (in resolution range)	96.1 (33.38-2.30) 96.2 (33.36-2.30)	Depositor EDS
$R_{merge}$	0.10	Depositor
$R_{sym}$	0.10	Depositor
$\langle I/\sigma(I) \rangle$ <sup>1</sup>	2.81 (at 2.29Å)	Xtrriage
Refinement program	REFMAC 5.7.0029	Depositor
R, $R_{free}$	0.191 , 0.232 0.191 , 0.232	Depositor DCC
$R_{free}$ test set	4224 reflections (5.10%)	wwPDB-VP
Wilson B-factor (Å <sup>2</sup> )	49.6	Xtrriage
Anisotropy	0.406	Xtrriage
Bulk solvent $k_{sol}$ (e/Å <sup>3</sup> ), $B_{sol}$ (Å <sup>2</sup> )	0.35 , 54.3	EDS
L-test for twinning <sup>2</sup>	$\langle  L  \rangle = 0.50$ , $\langle L^2 \rangle = 0.34$	Xtrriage
Estimated twinning fraction	No twinning to report.	Xtrriage
$F_o, F_c$ correlation	0.96	EDS
Total number of atoms	8556	wwPDB-VP
Average B, all atoms (Å <sup>2</sup> )	60.0	wwPDB-VP

Xtrriage's analysis on translational NCS is as follows: *The largest off-origin peak in the Patterson function is 3.62% of the height of the origin peak. No significant pseudotranslation is detected.*

<sup>1</sup>Intensities estimated from amplitudes.

<sup>2</sup>Theoretical values of  $\langle |L| \rangle$ ,  $\langle L^2 \rangle$  for acentric reflections are 0.5, 0.333 respectively for untwinned datasets, and 0.375, 0.2 for perfectly twinned datasets.

## 5 Model quality i

### 5.1 Standard geometry i

Bond lengths and bond angles in the following residue types are not validated in this section: HEC, CA, FE, 10M, AXO, HEM

The Z score for a bond length (or angle) is the number of standard deviations the observed value is removed from the expected value. A bond length (or angle) with  $|Z| > 5$  is considered an outlier worth inspection. RMSZ is the root-mean-square of all Z scores of the bond lengths (or angles).

Mol	Chain	Bond lengths		Bond angles	
		RMSZ	# Z  >5	RMSZ	# Z  >5
1	L	0.92	2/1709 (0.1%)	0.95	1/2317 (0.0%)
2	H	0.93	1/1735 (0.1%)	0.95	1/2367 (0.0%)
3	B	0.77	1/3693 (0.0%)	0.83	7/5039 (0.1%)
4	C	0.73	0/1153	0.82	0/1559
All	All	0.83	4/8290 (0.0%)	0.88	9/11282 (0.1%)

All (4) bond length outliers are listed below:

Mol	Chain	Res	Type	Atoms	Z	Observed(Å)	Ideal(Å)
1	L	63	SER	CA-CB	5.58	1.61	1.52
2	H	206	CYS	CB-SG	-5.43	1.73	1.81
1	L	194	CYS	CB-SG	-5.10	1.73	1.81
3	B	437	TYR	CE1-CZ	5.09	1.45	1.38

All (9) bond angle outliers are listed below:

Mol	Chain	Res	Type	Atoms	Z	Observed(°)	Ideal(°)
3	B	198	ASP	CB-CG-OD1	6.89	124.50	118.30
3	B	427	MET	CG-SD-CE	-5.71	91.07	100.20
3	B	198	ASP	CB-CG-OD2	-5.59	113.27	118.30
3	B	300	ARG	NE-CZ-NH1	5.49	123.05	120.30
2	H	206	CYS	CA-CB-SG	-5.38	104.31	114.00
3	B	420	ASP	CB-CG-OD1	5.13	122.92	118.30
3	B	222	LEU	CB-CG-CD2	5.05	119.59	111.00
1	L	46	LEU	CB-CG-CD2	5.03	119.55	111.00
3	B	64	LEU	CA-CB-CG	5.01	126.83	115.30

There are no chirality outliers.

There are no planarity outliers.

## 5.2 Too-close contacts

In the following table, the Non-H and H(model) columns list the number of non-hydrogen atoms and hydrogen atoms in the chain respectively. The H(added) column lists the number of hydrogen atoms added and optimized by MolProbity. The Clashes column lists the number of clashes within the asymmetric unit, whereas Symm-Clashes lists symmetry-related clashes.

Mol	Chain	Non-H	H(model)	H(added)	Clashes	Symm-Clashes
1	L	1669	0	1606	34	0
2	H	1692	0	1647	29	0
3	B	3576	0	3619	85	0
4	C	1123	0	1092	18	0
5	B	86	0	60	5	0
6	B	1	0	0	0	0
7	B	4	0	4	1	0
8	B	66	0	84	2	0
9	B	1	0	0	0	0
10	C	43	0	30	1	0
11	B	53	0	0	1	0
11	C	48	0	0	0	0
11	H	100	0	0	1	0
11	L	94	0	0	1	0
All	All	8556	0	8142	158	0

The all-atom clashscore is defined as the number of clashes found per 1000 atoms (including hydrogen atoms). The all-atom clashscore for this structure is 10.

All (158) close contacts within the same asymmetric unit are listed below, sorted by their clash magnitude.

Atom-1	Atom-2	Interatomic distance (Å)	Clash overlap (Å)
2:H:199:ARG:HH11	2:H:199:ARG:CG	1.52	1.22
2:H:199:ARG:HG3	2:H:199:ARG:NH1	1.48	1.11
3:B:126:ASN:HB2	3:B:132:MET:HE2	1.20	1.10
3:B:121:ALA:HA	3:B:132:MET:HE1	1.26	1.08
3:B:126:ASN:HB2	3:B:132:MET:CE	1.88	1.02
3:B:126:ASN:CB	3:B:132:MET:HE2	1.89	1.02
3:B:300:ARG:HH11	3:B:300:ARG:HG3	1.23	1.00
2:H:48:ILE:HG21	2:H:81:MET:CE	1.97	0.94
2:H:199:ARG:HH11	2:H:199:ARG:HG3	0.77	0.94
2:H:48:ILE:HG21	2:H:81:MET:HE3	1.51	0.92
1:L:121:SER:HB2	1:L:123:GLU:OE1	1.71	0.90
3:B:338:THR:O	3:B:341:THR:HB	1.78	0.83
3:B:126:ASN:CB	3:B:132:MET:CE	2.52	0.83

*Continued on next page...*

*Continued from previous page...*

Atom-1	Atom-2	Interatomic distance (Å)	Clash overlap (Å)
2:H:183:SER:OG	2:H:184:ASP:N	2.13	0.80
3:B:104:ALA:O	3:B:108:THR:HG23	1.82	0.80
1:L:192:TYR:O	1:L:208:SER:HB2	1.82	0.79
3:B:137:LEU:HA	3:B:139:GLN:HE22	1.47	0.78
3:B:121:ALA:HA	3:B:132:MET:CE	2.12	0.77
3:B:393:MET:HE1	3:B:451:LEU:HD23	1.66	0.77
3:B:121:ALA:CA	3:B:132:MET:HE1	2.11	0.77
1:L:2:ILE:HD11	1:L:93:GLU:OE1	1.86	0.75
3:B:13:GLN:HE22	3:B:82:GLU:HB2	1.52	0.75
1:L:79:GLU:HG3	1:L:80:PRO:HD2	1.67	0.74
3:B:430:GLN:HE21	4:C:110:ARG:HH22	1.36	0.73
3:B:139:GLN:HE21	3:B:144:LYS:HE3	1.54	0.72
1:L:198:HIS:HD2	1:L:200:THR:OG1	1.73	0.71
3:B:28:VAL:HG22	3:B:451:LEU:CD1	2.21	0.70
2:H:199:ARG:CG	2:H:199:ARG:NH1	2.20	0.70
1:L:27:LYS:HD3	11:L:344:HOH:O	1.91	0.69
2:H:107:LYS:HB3	11:H:322:HOH:O	1.93	0.68
3:B:300:ARG:HH11	3:B:300:ARG:CG	2.04	0.68
1:L:2:ILE:HD11	1:L:93:GLU:CD	2.15	0.66
3:B:341:THR:CG2	3:B:343:LEU:H	2.10	0.64
3:B:126:ASN:CG	3:B:132:MET:HE2	2.18	0.63
4:C:137:THR:HG21	4:C:140:TRP:O	1.99	0.63
2:H:87:THR:CG2	2:H:89:GLU:H	2.11	0.63
3:B:300:ARG:HG3	3:B:300:ARG:NH1	2.02	0.62
1:L:50:SER:H	1:L:91:HIS:HE1	1.48	0.62
3:B:108:THR:HG21	3:B:143:SER:OG	1.99	0.62
2:H:194:VAL:HG13	2:H:198:THR:HB	1.82	0.61
4:C:80:ASN:HD22	4:C:80:ASN:H	1.49	0.61
3:B:142:ILE:HG12	11:B:924:HOH:O	1.99	0.61
3:B:13:GLN:NE2	3:B:82:GLU:HB2	2.14	0.61
3:B:430:GLN:HE21	4:C:110:ARG:NH2	1.99	0.60
3:B:195:LEU:HD11	4:C:67:LEU:HD13	1.83	0.60
3:B:229:ILE:HD11	3:B:366:TYR:CD1	2.37	0.60
3:B:230:THR:HG23	3:B:232:VAL:H	1.67	0.60
2:H:48:ILE:HG21	2:H:81:MET:HE1	1.80	0.58
2:H:87:THR:HG22	2:H:89:GLU:H	1.67	0.57
1:L:79:GLU:HG3	1:L:80:PRO:CD	2.34	0.57
1:L:161:ASN:HD22	1:L:177:SER:HA	1.69	0.57
1:L:2:ILE:HD12	1:L:2:ILE:N	2.20	0.57
2:H:48:ILE:CG2	2:H:81:MET:HE3	2.31	0.57
1:L:167:ASP:OD2	1:L:169:LYS:HB3	2.05	0.56

*Continued on next page...*

*Continued from previous page...*

Atom-1	Atom-2	Interatomic distance (Å)	Clash overlap (Å)
1:L:123:GLU:H	1:L:123:GLU:CD	2.09	0.56
4:C:80:ASN:ND2	4:C:84:ARG:HH12	2.04	0.56
3:B:28:VAL:HG22	3:B:451:LEU:HD11	1.87	0.55
4:C:80:ASN:HD21	4:C:84:ARG:HH12	1.53	0.55
3:B:224:PHE:CE1	3:B:228:LYS:HE2	2.42	0.55
2:H:76:ALA:O	2:H:78:THR:HG22	2.06	0.54
3:B:210:VAL:HG13	5:B:802:HEM:C2B	2.42	0.54
3:B:264:GLY:HA2	4:C:136:ASP:O	2.06	0.54
3:B:413:TRP:HA	3:B:417:MET:HG3	1.90	0.54
3:B:430:GLN:NE2	4:C:110:ARG:HH22	2.02	0.54
3:B:229:ILE:HD11	3:B:366:TYR:HD1	1.71	0.53
3:B:234:ARG:O	3:B:238:GLU:HG3	2.08	0.53
1:L:50:SER:H	1:L:91:HIS:CE1	2.26	0.53
3:B:158:VAL:CG1	3:B:175:MET:SD	2.97	0.53
3:B:341:THR:HG22	3:B:343:LEU:H	1.74	0.53
3:B:137:LEU:HA	3:B:139:GLN:NE2	2.21	0.53
3:B:230:THR:CG2	3:B:232:VAL:H	2.22	0.53
3:B:341:THR:HG23	3:B:343:LEU:H	1.74	0.52
2:H:134:PRO:HD3	2:H:219:LYS:HG3	1.91	0.52
3:B:230:THR:HG23	3:B:232:VAL:HG23	1.90	0.52
1:L:136:LEU:CD1	1:L:196:ALA:HB2	2.40	0.52
1:L:36:TYR:HE2	1:L:89:GLN:HE21	1.57	0.52
2:H:55:ASN:O	2:H:56:SER:HB2	2.09	0.52
3:B:230:THR:CG2	3:B:232:VAL:HB	2.40	0.51
3:B:305:ARG:HH12	3:B:380:ASN:HD21	1.58	0.51
3:B:221:ILE:HG23	3:B:363:ILE:HG12	1.93	0.51
3:B:295:ILE:O	3:B:298:ARG:HG3	2.11	0.51
3:B:210:VAL:CG1	5:B:802:HEM:C2B	2.93	0.51
3:B:349:HIS:CD2	5:B:801:HEM:NC	2.78	0.51
4:C:137:THR:CG2	4:C:140:TRP:O	2.59	0.50
1:L:212:ASN:OD1	1:L:213:GLU:N	2.35	0.50
3:B:411:GLN:HB2	3:B:433:LEU:HD21	1.94	0.49
1:L:122:SER:O	1:L:126:THR:HG23	2.13	0.49
1:L:193:THR:HA	1:L:208:SER:HB3	1.94	0.49
3:B:295:ILE:O	3:B:298:ARG:CG	2.61	0.49
3:B:101:PHE:HB2	3:B:150:VAL:HG11	1.94	0.49
3:B:211:GLU:OE2	7:B:804:AXO:H1	2.12	0.49
3:B:210:VAL:HG13	5:B:802:HEM:C3B	2.48	0.48
4:C:14:TYR:O	4:C:18:SER:OG	2.28	0.48
1:L:141:PRO:O	1:L:198:HIS:HE1	1.97	0.48
3:B:126:ASN:HD21	3:B:132:MET:H	1.60	0.48

*Continued on next page...*

*Continued from previous page...*

Atom-1	Atom-2	Interatomic distance (Å)	Clash overlap (Å)
3:B:303:PRO:HG2	3:B:376:GLU:OE1	2.14	0.48
2:H:87:THR:HG22	2:H:89:GLU:N	2.29	0.48
3:B:24:LEU:HB3	3:B:455:LEU:HD21	1.96	0.47
3:B:304:ASN:HB2	3:B:377:ALA:HB2	1.96	0.47
1:L:125:LEU:O	1:L:183:LYS:HD2	2.14	0.47
3:B:420:ASP:OD1	4:C:143:ASN:HB2	2.14	0.47
3:B:226:LEU:O	3:B:230:THR:HB	2.14	0.47
3:B:300:ARG:CG	3:B:300:ARG:NH1	2.72	0.47
3:B:352:PHE:HB3	5:B:801:HEM:HBC1	1.97	0.47
1:L:192:TYR:O	1:L:208:SER:CB	2.58	0.47
4:C:113:PRO:HD3	10:C:201:HEC:HBC2	1.97	0.46
1:L:91:HIS:HD2	2:H:109:TRP:CE3	2.34	0.46
3:B:30:GLN:NE2	3:B:67:TRP:HE1	2.13	0.46
3:B:40:GLN:O	3:B:44:GLY:HA2	2.16	0.46
2:H:183:SER:HG	2:H:184:ASP:H	1.59	0.46
3:B:305:ARG:HG3	3:B:383:GLN:NE2	2.31	0.45
4:C:80:ASN:HD22	4:C:80:ASN:N	2.09	0.45
3:B:12:SER:HB2	3:B:91:PRO:HG3	1.98	0.45
2:H:11:LEU:HD12	2:H:121:THR:HB	1.99	0.45
1:L:2:ILE:N	1:L:2:ILE:CD1	2.80	0.45
3:B:305:ARG:NH1	3:B:380:ASN:HD21	2.15	0.45
3:B:62:ASN:ND2	3:B:112:TYR:OH	2.50	0.45
1:L:190:ASN:HD21	1:L:212:ASN:H	1.65	0.44
4:C:53:LYS:NZ	4:C:57:GLU:OE2	2.49	0.44
4:C:55:VAL:HG11	4:C:125:LEU:HG	1.99	0.44
1:L:121:SER:CB	1:L:123:GLU:OE1	2.55	0.44
3:B:126:ASN:CG	3:B:132:MET:CE	2.83	0.44
2:H:199:ARG:HH11	2:H:199:ARG:HG2	1.68	0.43
3:B:339:HIS:CD2	4:C:69:GLY:HA3	2.53	0.43
1:L:203:SER:HA	1:L:204:PRO:HD3	1.83	0.43
2:H:170:LEU:HD13	2:H:192:VAL:HG21	2.00	0.43
2:H:199:ARG:HD2	2:H:200:PRO:HA	2.01	0.43
3:B:115:VAL:HG22	3:B:120:LEU:HB2	2.01	0.43
3:B:282:LEU:N	3:B:283:PRO:HD2	2.33	0.43
1:L:4:MET:HE2	1:L:4:MET:HB3	1.69	0.43
3:B:28:VAL:CG2	3:B:451:LEU:HD11	2.49	0.43
3:B:342:GLN:H	3:B:411:GLN:NE2	2.17	0.43
1:L:2:ILE:HG13	1:L:27:LYS:HG3	2.02	0.42
1:L:161:ASN:ND2	1:L:177:SER:OG	2.52	0.42
3:B:417:MET:O	8:B:805:10M:C13	2.67	0.42
3:B:203:TRP:CE2	3:B:259:HIS:HB3	2.54	0.42

*Continued on next page...*

Continued from previous page...

Atom-1	Atom-2	Interatomic distance (Å)	Clash overlap (Å)
3:B:82:GLU:OE1	3:B:228:LYS:HE3	2.19	0.42
1:L:36:TYR:OH	1:L:89:GLN:NE2	2.52	0.42
2:H:219:LYS:HA	2:H:219:LYS:HD2	1.67	0.42
3:B:230:THR:HG23	3:B:232:VAL:CG2	2.49	0.42
3:B:69:LEU:HD23	3:B:69:LEU:HA	1.89	0.42
2:H:199:ARG:NH1	2:H:199:ARG:HG2	2.23	0.42
3:B:158:VAL:HG13	3:B:175:MET:SD	2.59	0.42
2:H:182:GLN:NE2	2:H:187:THR:HG21	2.35	0.41
3:B:302:TYR:OH	3:B:370:ARG:NH1	2.54	0.41
1:L:156:GLN:HE21	1:L:156:GLN:HB3	1.68	0.41
3:B:448:LEU:O	3:B:452:VAL:HG23	2.20	0.41
3:B:410:LEU:HD22	3:B:414:LEU:CD1	2.50	0.41
3:B:419:ALA:HB2	8:B:805:10M:H17A	2.01	0.41
1:L:78:LEU:HD23	1:L:78:LEU:HA	1.91	0.41
4:C:104:LEU:O	4:C:105:ASN:HB2	2.20	0.41
2:H:76:ALA:O	2:H:78:THR:CG2	2.68	0.41
3:B:121:ALA:CB	3:B:132:MET:CE	2.98	0.41
3:B:404:LEU:HD13	3:B:440:ARG:HG3	2.03	0.41
1:L:48:ILE:HD13	1:L:54:LEU:HD23	2.03	0.40
2:H:68:ALA:HB1	2:H:81:MET:CE	2.52	0.40
2:H:68:ALA:HB1	2:H:81:MET:HE2	2.04	0.40
3:B:13:GLN:NE2	3:B:78:TYR:O	2.55	0.40

There are no symmetry-related clashes.

## 5.3 Torsion angles [i](#)

### 5.3.1 Protein backbone [i](#)

In the following table, the Percentiles column shows the percent Ramachandran outliers of the chain as a percentile score with respect to all X-ray entries followed by that with respect to entries of similar resolution.

The Analysed column shows the number of residues for which the backbone conformation was analysed, and the total number of residues.

Mol	Chain	Analysed	Favoured	Allowed	Outliers	Percentiles	
1	L	211/213 (99%)	206 (98%)	4 (2%)	1 (0%)	29	35
2	H	223/225 (99%)	210 (94%)	11 (5%)	2 (1%)	17	20
3	B	447/465 (96%)	434 (97%)	12 (3%)	1 (0%)	47	58

Continued on next page...



Continued from previous page...

Mol	Chain	Analysed	Favoured	Allowed	Outliers	Percentiles	
4	C	140/146 (96%)	136 (97%)	4 (3%)	0	100	100
All	All	1021/1049 (97%)	986 (97%)	31 (3%)	4 (0%)	34	42

All (4) Ramachandran outliers are listed below:

Mol	Chain	Res	Type
3	B	256	THR
2	H	140	GLY
2	H	141	ASP
1	L	68	GLY

### 5.3.2 Protein sidechains [i](#)

In the following table, the Percentiles column shows the percent sidechain outliers of the chain as a percentile score with respect to all X-ray entries followed by that with respect to entries of similar resolution.

The Analysed column shows the number of residues for which the sidechain conformation was analysed, and the total number of residues.

Mol	Chain	Analysed	Rotameric	Outliers	Percentiles	
1	L	189/189 (100%)	175 (93%)	14 (7%)	13	17
2	H	192/192 (100%)	172 (90%)	20 (10%)	7	8
3	B	360/371 (97%)	314 (87%)	46 (13%)	4	4
4	C	116/120 (97%)	108 (93%)	8 (7%)	15	20
All	All	857/872 (98%)	769 (90%)	88 (10%)	7	8

All (88) residues with a non-rotameric sidechain are listed below:

Mol	Chain	Res	Type
1	L	20	THR
1	L	24	ARG
1	L	27	LYS
1	L	46	LEU
1	L	69	THR
1	L	89	GLN
1	L	96	LEU
1	L	106	LEU
1	L	136	LEU
1	L	153	SER

Continued on next page...

*Continued from previous page...*

<b>Mol</b>	<b>Chain</b>	<b>Res</b>	<b>Type</b>
1	L	179	LEU
1	L	199	LYS
1	L	207	LYS
1	L	213	GLU
2	H	11	LEU
2	H	43	GLN
2	H	78	THR
2	H	85	SER
2	H	87	THR
2	H	106	VAL
2	H	116	GLN
2	H	135	LEU
2	H	142	THR
2	H	143	THR
2	H	152	LEU
2	H	161	VAL
2	H	170	LEU
2	H	172	SER
2	H	187	THR
2	H	188	LEU
2	H	194	VAL
2	H	199	ARG
2	H	217	VAL
2	H	219	LYS
3	B	17	LYS
3	B	30	GLN
3	B	39	LEU
3	B	54	ASN
3	B	64	LEU
3	B	67	TRP
3	B	92	LYS
3	B	93	LEU
3	B	96	ILE
3	B	108	THR
3	B	114	LEU
3	B	115	VAL
3	B	158	VAL
3	B	195	LEU
3	B	213	VAL
3	B	222	LEU
3	B	230	THR
3	B	233	ASP

*Continued on next page...*

*Continued from previous page...*

<b>Mol</b>	<b>Chain</b>	<b>Res</b>	<b>Type</b>
3	B	241	LEU
3	B	258	HIS
3	B	296	ASN
3	B	298	ARG
3	B	300	ARG
3	B	305	ARG
3	B	309	LEU
3	B	328	MET
3	B	329	HIS
3	B	330	THR
3	B	341	THR
3	B	343	LEU
3	B	352	PHE
3	B	363	ILE
3	B	368	MET
3	B	380	ASN
3	B	384	VAL
3	B	386	GLU
3	B	398	VAL
3	B	404	LEU
3	B	410	LEU
3	B	416	ARG
3	B	417	MET
3	B	427	MET
3	B	433	LEU
3	B	435	ILE
3	B	448	LEU
3	B	451	LEU
4	C	18	SER
4	C	24	LEU
4	C	36	LEU
4	C	67	LEU
4	C	80	ASN
4	C	95	LEU
4	C	106	VAL
4	C	137	THR

Sometimes sidechains can be flipped to improve hydrogen bonding and reduce clashes. All (23) such sidechains are listed below:

<b>Mol</b>	<b>Chain</b>	<b>Res</b>	<b>Type</b>
1	L	89	GLN
1	L	91	HIS

*Continued on next page...*

*Continued from previous page...*

Mol	Chain	Res	Type
1	L	137	ASN
1	L	156	GLN
1	L	161	ASN
1	L	198	HIS
2	H	182	GLN
3	B	13	GLN
3	B	30	GLN
3	B	54	ASN
3	B	62	ASN
3	B	126	ASN
3	B	139	GLN
3	B	296	ASN
3	B	380	ASN
3	B	383	GLN
3	B	411	GLN
3	B	430	GLN
4	C	31	HIS
4	C	60	ASN
4	C	80	ASN
4	C	96	GLN
4	C	102	GLN

### 5.3.3 RNA [i](#)

There are no RNA molecules in this entry.

### 5.4 Non-standard residues in protein, DNA, RNA chains [i](#)

There are no non-standard protein/DNA/RNA residues in this entry.

### 5.5 Carbohydrates [i](#)

There are no monosaccharides in this entry.

### 5.6 Ligand geometry [i](#)

Of 8 ligands modelled in this entry, 2 are monoatomic - leaving 6 for Mogul analysis.

In the following table, the Counts columns list the number of bonds (or angles) for which Mogul statistics could be retrieved, the number of bonds (or angles) that are observed in the model and the number of bonds (or angles) that are defined in the Chemical Component Dictionary. The

Link column lists molecule types, if any, to which the group is linked. The Z score for a bond length (or angle) is the number of standard deviations the observed value is removed from the expected value. A bond length (or angle) with  $|Z| > 2$  is considered an outlier worth inspection. RMSZ is the root-mean-square of all Z scores of the bond lengths (or angles).

Mol	Type	Chain	Res	Link	Bond lengths			Bond angles		
					Counts	RMSZ	# Z  > 2	Counts	RMSZ	# Z  > 2
5	HEM	B	802	3,9,7	41,50,50	1.94	7 (17%)	45,82,82	2.74	19 (42%)
10	HEC	C	201	4	32,50,50	2.37	8 (25%)	24,82,82	2.11	6 (25%)
8	10M	B	805	-	34,34,34	1.34	5 (14%)	44,45,45	1.48	9 (20%)
8	10M	B	807	-	34,34,34	1.39	3 (8%)	44,45,45	1.03	4 (9%)
7	AXO	B	804	5,6	2,3,3	3.88	2 (100%)	1,2,2	12.44	1 (100%)
5	HEM	B	801	3,9	41,50,50	1.96	9 (21%)	45,82,82	2.82	16 (35%)

In the following table, the Chirals column lists the number of chiral outliers, the number of chiral centers analysed, the number of these observed in the model and the number defined in the Chemical Component Dictionary. Similar counts are reported in the Torsion and Rings columns. '-' means no outliers of that kind were identified.

Mol	Type	Chain	Res	Link	Chirals	Torsions	Rings
5	HEM	B	802	3,9,7	-	3/12/54/54	-
10	HEC	C	201	4	-	2/10/54/54	-
8	10M	B	805	-	-	8/19/59/59	0/2/2/2
8	10M	B	807	-	-	5/19/59/59	0/2/2/2
7	AXO	B	804	5,6	-	0/0/1/1	-
5	HEM	B	801	3,9	-	2/12/54/54	-

All (34) bond length outliers are listed below:

Mol	Chain	Res	Type	Atoms	Z	Observed(Å)	Ideal(Å)
10	C	201	HEC	C2B-C3B	-7.01	1.33	1.40
5	B	801	HEM	C3D-C2D	6.85	1.51	1.36
5	B	802	HEM	C3D-C2D	6.82	1.51	1.36
10	C	201	HEC	C3C-C2C	-6.34	1.34	1.40
8	B	807	10M	O1-C11	5.63	1.51	1.42
10	C	201	HEC	C3D-C2D	4.91	1.52	1.37
5	B	802	HEM	C3C-C2C	-4.84	1.33	1.40
5	B	801	HEM	C3C-C2C	-4.82	1.33	1.40
7	B	804	AXO	O1-N	-4.52	1.30	1.40
5	B	801	HEM	C3C-CAC	3.87	1.55	1.47
5	B	802	HEM	C3C-CAC	3.70	1.55	1.47
8	B	807	10M	C10-S	3.11	1.85	1.81

*Continued on next page...*

Continued from previous page...

Mol	Chain	Res	Type	Atoms	Z	Observed(Å)	Ideal(Å)
7	B	804	AXO	C1-N	-3.11	1.23	1.26
8	B	807	10M	C11-S	3.10	1.85	1.80
5	B	802	HEM	CMD-C2D	3.04	1.57	1.50
5	B	801	HEM	CAB-C3B	3.03	1.55	1.47
8	B	805	10M	O3-C15	2.99	1.50	1.41
5	B	802	HEM	CAB-C3B	2.79	1.55	1.47
8	B	805	10M	C10-S	2.60	1.84	1.81
5	B	802	HEM	CAA-C2A	2.54	1.55	1.52
10	C	201	HEC	C3C-C4C	2.52	1.47	1.43
5	B	801	HEM	CHA-C4D	2.37	1.41	1.35
5	B	802	HEM	CMB-C2B	2.35	1.55	1.50
5	B	801	HEM	CMC-C2C	2.23	1.56	1.51
10	C	201	HEC	O1A-CGA	2.22	1.29	1.22
8	B	805	10M	O4-C15	2.20	1.47	1.41
5	B	801	HEM	CMB-C2B	2.14	1.55	1.50
5	B	801	HEM	O1D-CGD	2.14	1.29	1.22
8	B	805	10M	C11-S	2.11	1.84	1.80
8	B	805	10M	O1-C11	2.11	1.45	1.42
10	C	201	HEC	C4D-CHA	-2.10	1.35	1.41
5	B	801	HEM	C2C-C1C	2.10	1.47	1.42
10	C	201	HEC	CMA-C3A	2.05	1.56	1.51
10	C	201	HEC	CMC-C2C	2.04	1.56	1.51

All (55) bond angle outliers are listed below:

Mol	Chain	Res	Type	Atoms	Z	Observed(°)	Ideal(°)
7	B	804	AXO	O1-N-C1	-12.44	99.75	111.69
5	B	801	HEM	C2C-C3C-C4C	10.53	114.25	106.90
5	B	802	HEM	CBA-CAA-C2A	-7.05	100.58	112.62
5	B	802	HEM	CMD-C2D-C1D	5.61	133.58	125.04
5	B	802	HEM	CAD-C3D-C4D	5.59	134.43	124.66
5	B	802	HEM	C3B-C2B-C1B	-5.47	102.43	106.49
5	B	801	HEM	CMA-C3A-C4A	-5.28	120.35	128.46
5	B	801	HEM	C4D-ND-C1D	5.05	110.29	105.07
10	C	201	HEC	CBD-CAD-C3D	-4.83	104.38	112.62
5	B	801	HEM	CMA-C3A-C2A	4.75	133.90	124.94
10	C	201	HEC	C1D-C2D-C3D	-4.39	103.94	107.00
5	B	802	HEM	CAD-C3D-C2D	-4.26	119.95	127.88
5	B	802	HEM	C1D-C2D-C3D	-4.23	102.50	106.96
10	C	201	HEC	CMB-C2B-C1B	-4.19	122.02	128.46
10	C	201	HEC	CMB-C2B-C3B	4.12	130.67	125.82
5	B	801	HEM	C4C-CHD-C1D	4.12	128.00	122.56

Continued on next page...

*Continued from previous page...*

Mol	Chain	Res	Type	Atoms	Z	Observed(°)	Ideal(°)
5	B	801	HEM	C3B-C2B-C1B	-4.07	103.47	106.49
5	B	802	HEM	CHB-C1B-NB	-4.07	119.36	124.38
5	B	801	HEM	CBD-CAD-C3D	-4.06	101.34	112.63
5	B	802	HEM	C2B-C1B-NB	4.05	114.64	109.84
5	B	802	HEM	C4C-CHD-C1D	3.95	127.77	122.56
5	B	801	HEM	CAA-CBA-CGA	-3.90	102.83	113.76
5	B	801	HEM	C4B-C3B-C2B	3.87	110.18	107.11
5	B	802	HEM	C4B-C3B-C2B	3.81	110.14	107.11
5	B	801	HEM	CMB-C2B-C1B	3.63	130.57	125.04
8	B	805	10M	C18-C19-C20	3.40	116.76	110.82
5	B	802	HEM	C2D-C1D-ND	3.34	113.89	109.88
8	B	805	10M	C22-C21-C14	3.25	117.11	109.68
5	B	801	HEM	C4B-CHC-C1C	3.15	126.71	122.56
5	B	801	HEM	CHC-C4B-NB	2.94	127.62	124.43
8	B	805	10M	O3-C15-C20	2.89	115.58	108.10
8	B	805	10M	C15-C20-C19	2.87	115.97	110.00
8	B	805	10M	O4-C16-C18	2.84	114.85	109.69
8	B	805	10M	C15-O3-C14	-2.71	111.25	117.96
8	B	805	10M	C21-C14-C12	2.59	116.86	110.93
5	B	802	HEM	C1B-NB-C4B	-2.58	102.41	105.07
5	B	802	HEM	CMB-C2B-C3B	2.56	134.56	128.30
10	C	201	HEC	CBA-CAA-C2A	-2.50	108.40	112.60
5	B	802	HEM	CMC-C2C-C3C	2.47	129.30	124.68
5	B	802	HEM	CBB-CAB-C3B	-2.44	115.46	127.62
10	C	201	HEC	CMC-C2C-C1C	-2.40	124.78	128.46
5	B	801	HEM	C4D-C3D-C2D	-2.39	103.42	106.90
5	B	801	HEM	C3C-C4C-NC	-2.39	106.44	110.94
8	B	807	10M	C11-O1-C12	2.38	116.98	112.58
5	B	802	HEM	CAA-CBA-CGA	-2.38	107.09	113.76
5	B	802	HEM	O1D-CGD-CBD	-2.31	115.65	123.08
5	B	801	HEM	CHA-C4D-ND	2.30	127.23	124.38
8	B	807	10M	O4-C16-C17	2.29	112.12	106.44
8	B	807	10M	O3-C14-C21	-2.29	101.20	107.28
5	B	802	HEM	CAB-C3B-C4B	-2.27	113.92	124.47
8	B	805	10M	C19-C18-C16	2.22	114.19	110.24
8	B	807	10M	O10-C22-C11	2.14	114.19	110.27
5	B	802	HEM	CAB-C3B-C2B	2.09	135.50	128.60
8	B	805	10M	C11-C22-C21	2.04	114.62	110.59
5	B	801	HEM	CHD-C1D-ND	2.02	126.63	124.43

There are no chirality outliers.

All (20) torsion outliers are listed below:

Mol	Chain	Res	Type	Atoms
8	B	807	10M	C9-C10-S-C11
8	B	807	10M	O4-C16-C17-O5
8	B	807	10M	C7-C8-C9-C10
8	B	805	10M	C3-C4-C5-C6
8	B	805	10M	C4-C5-C6-C7
8	B	805	10M	C6-C7-C8-C9
8	B	805	10M	C5-C6-C7-C8
8	B	805	10M	C2-C3-C4-C5
8	B	807	10M	C18-C16-C17-O5
8	B	805	10M	C1-C2-C3-C4
8	B	805	10M	C21-C14-O3-C15
8	B	805	10M	C7-C8-C9-C10
5	B	802	HEM	CAA-CBA-CGA-O2A
10	C	201	HEC	CAD-CBD-CGD-O1D
5	B	801	HEM	CAA-CBA-CGA-O1A
5	B	801	HEM	CAA-CBA-CGA-O2A
10	C	201	HEC	CAD-CBD-CGD-O2D
8	B	807	10M	C6-C7-C8-C9
5	B	802	HEM	CAA-CBA-CGA-O1A
5	B	802	HEM	CAD-CBD-CGD-O1D

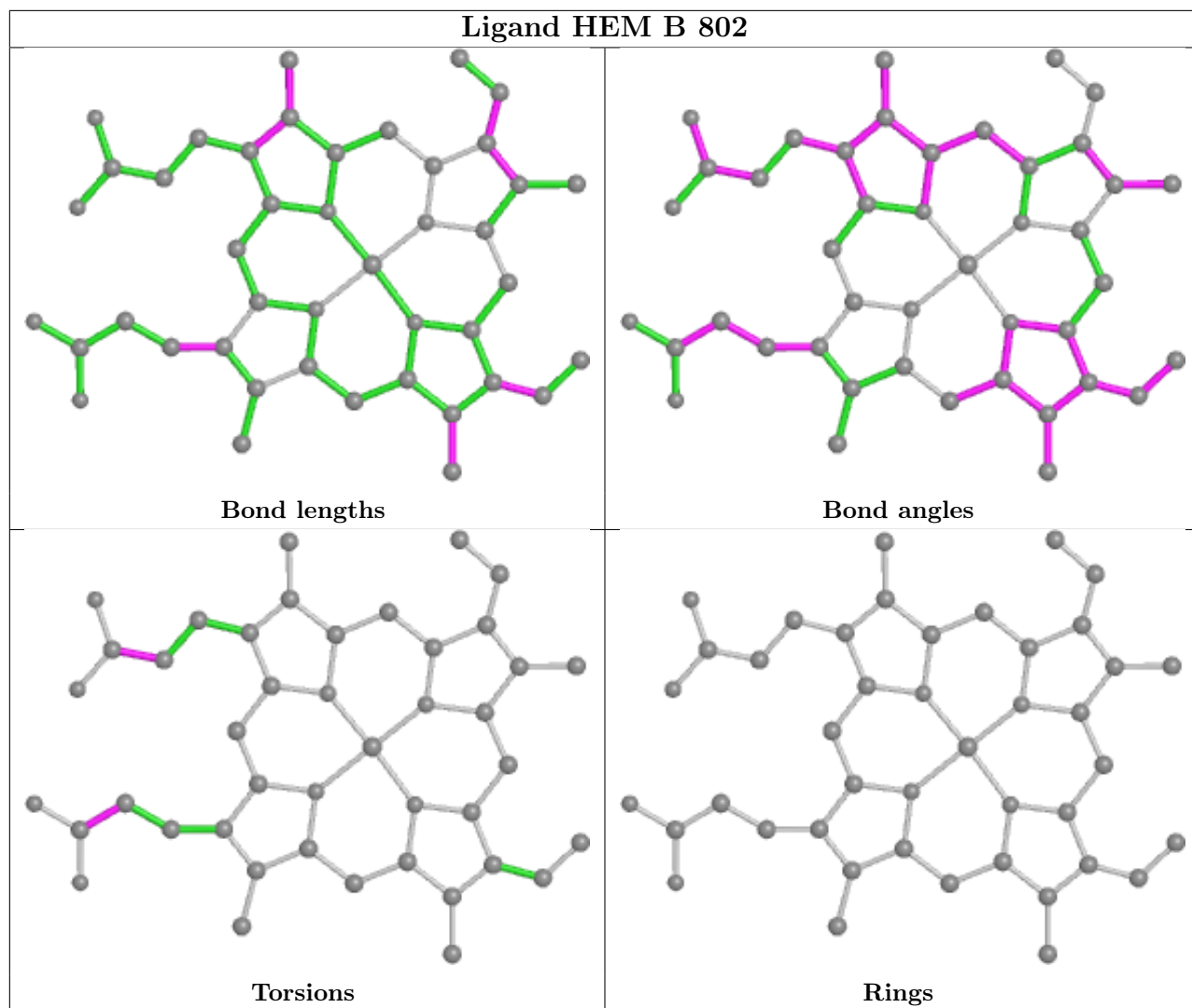
There are no ring outliers.

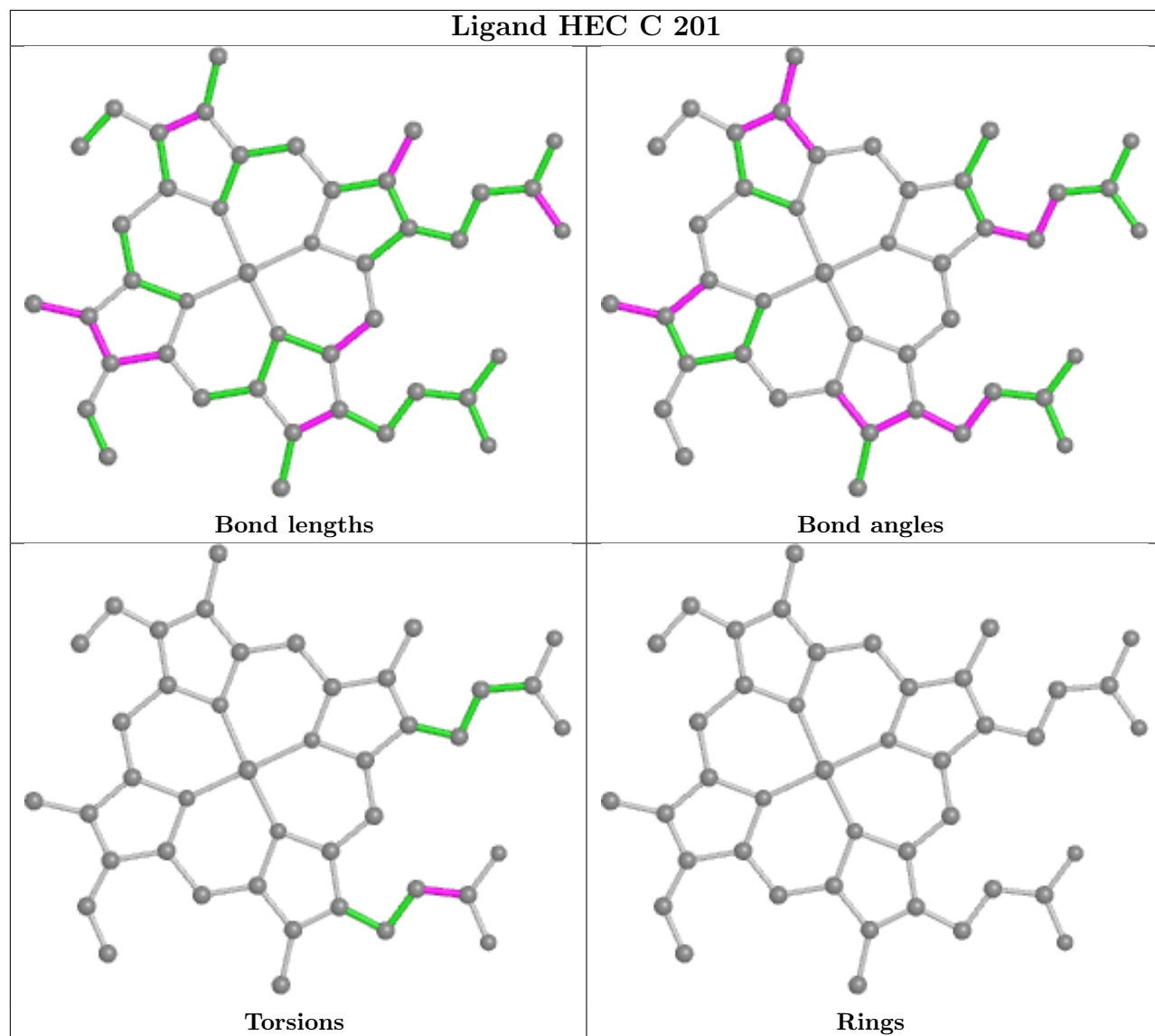
5 monomers are involved in 9 short contacts:

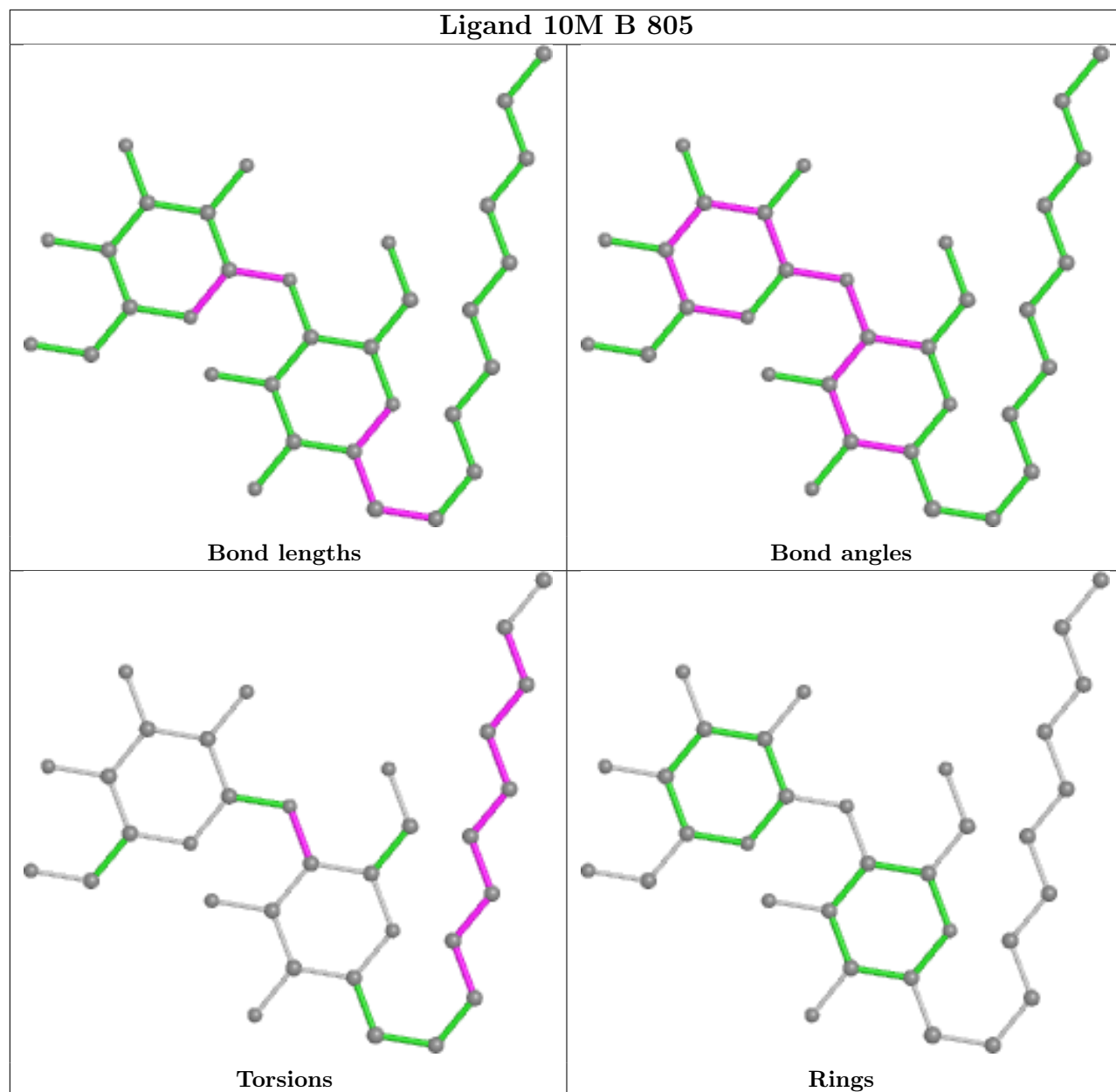
Mol	Chain	Res	Type	Clashes	Symm-Clashes
5	B	802	HEM	3	0
10	C	201	HEC	1	0
8	B	805	10M	2	0
7	B	804	AXO	1	0
5	B	801	HEM	2	0

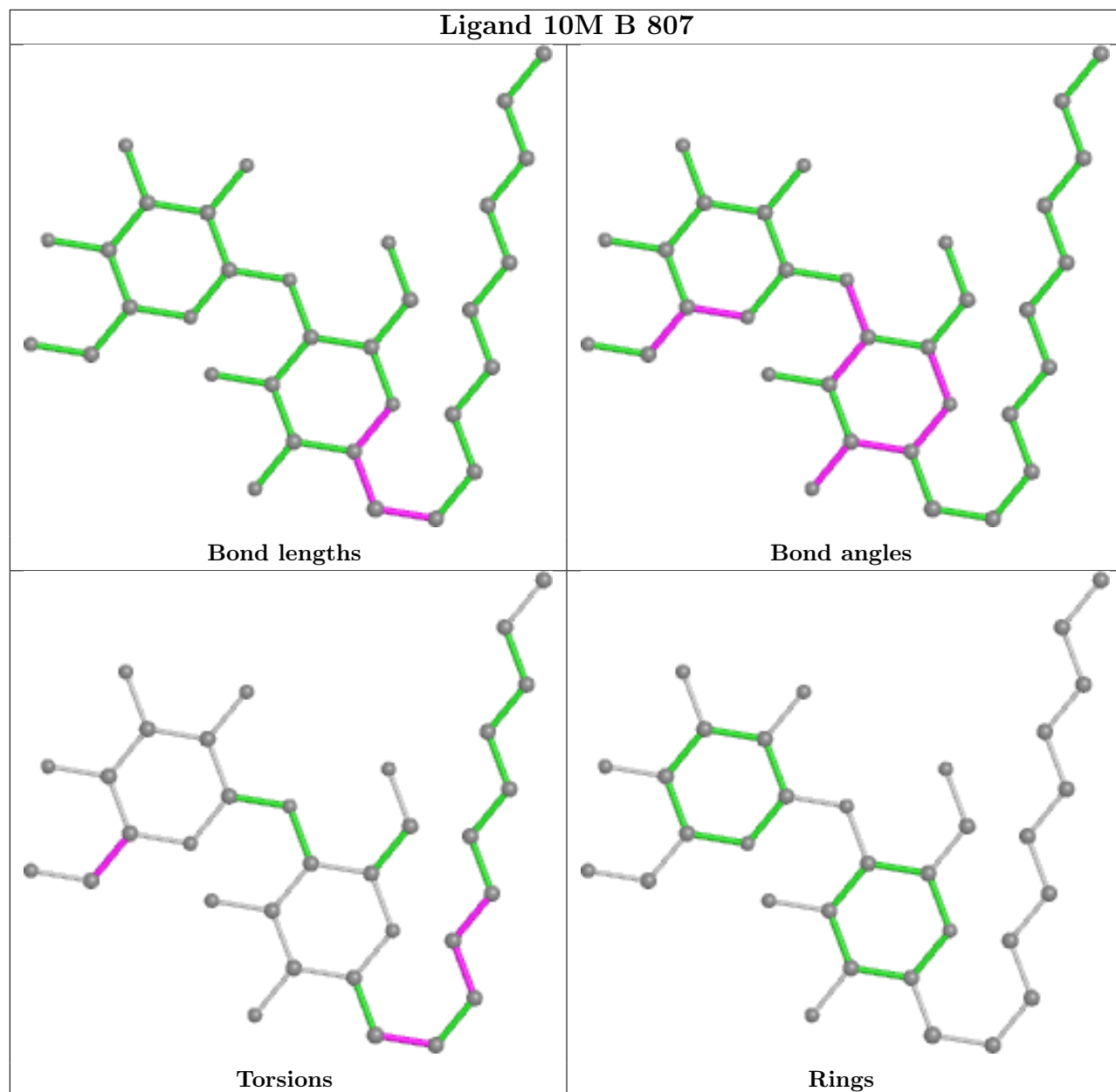
The following is a two-dimensional graphical depiction of Mogul quality analysis of bond lengths, bond angles, torsion angles, and ring geometry for all instances of the Ligand of Interest. In addition, ligands with molecular weight > 250 and outliers as shown on the validation Tables will also be included. For torsion angles, if less than 5% of the Mogul distribution of torsion angles is within 10 degrees of the torsion angle in question, then that torsion angle is considered an outlier. Any bond that is central to one or more torsion angles identified as an outlier by Mogul will be highlighted in the graph. For rings, the root-mean-square deviation (RMSD) between the ring in question and similar rings identified by Mogul is calculated over all ring torsion angles. If the average RMSD is greater than 60 degrees and the minimal RMSD between the ring in question and any Mogul-identified rings is also greater than 60 degrees, then that ring is considered an outlier. The outliers are highlighted in purple. The color gray indicates Mogul did not find sufficient equivalents in the CSD to analyse the geometry.

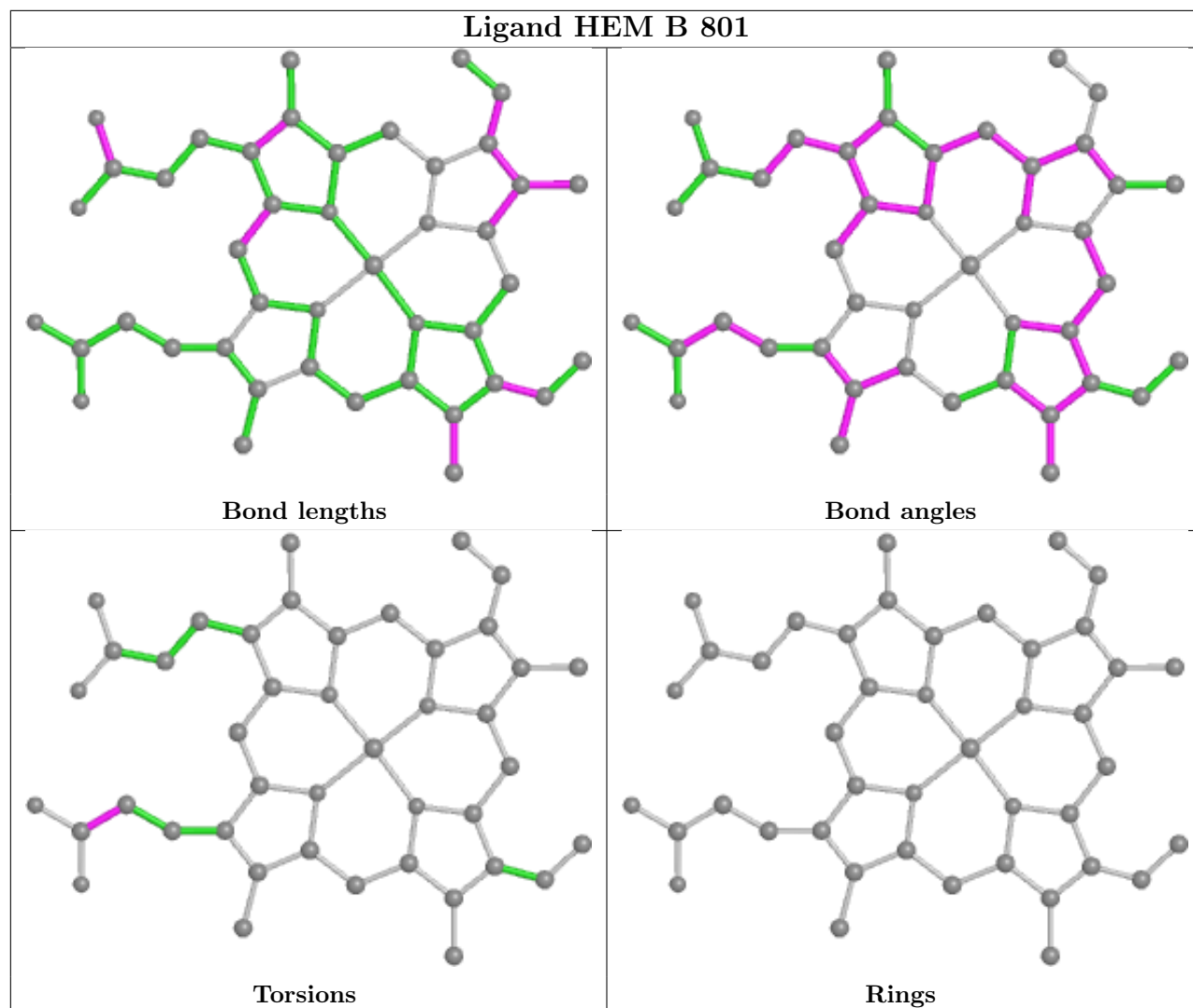












## 5.7 Other polymers [i](#)

There are no such residues in this entry.

## 5.8 Polymer linkage issues [i](#)

There are no chain breaks in this entry.

## 6 Fit of model and data

### 6.1 Protein, DNA and RNA chains

In the following table, the column labelled ‘#RSRZ > 2’ contains the number (and percentage) of RSRZ outliers, followed by percent RSRZ outliers for the chain as percentile scores relative to all X-ray entries and entries of similar resolution. The OWAB column contains the minimum, median, 95<sup>th</sup> percentile and maximum values of the occupancy-weighted average B-factor per residue. The column labelled ‘Q < 0.9’ lists the number of (and percentage) of residues with an average occupancy less than 0.9.

Mol	Chain	Analysed	<RSRZ>	#RSRZ>2	OWAB(Å <sup>2</sup> )	Q<0.9
1	L	213/213 (100%)	-0.25	3 (1%) 75 80	37, 49, 70, 118	0
2	H	225/225 (100%)	0.01	12 (5%) 26 33	37, 49, 79, 148	0
3	B	449/465 (96%)	0.38	56 (12%) 3 5	40, 63, 102, 137	0
4	C	142/146 (97%)	0.42	15 (10%) 6 8	40, 61, 85, 109	0
All	All	1029/1049 (98%)	0.17	86 (8%) 11 15	37, 57, 92, 148	0

All (86) RSRZ outliers are listed below:

Mol	Chain	Res	Type	RSRZ
3	B	299	ARG	7.9
3	B	381	ARG	7.5
3	B	206	VAL	5.5
3	B	296	ASN	5.2
2	H	143	THR	5.0
2	H	225	GLY	4.9
4	C	67	LEU	4.8
3	B	388	TRP	4.8
3	B	297	ARG	4.7
3	B	95	TRP	4.7
4	C	68	LEU	4.6
3	B	129	TRP	4.6
3	B	136	PHE	4.5
3	B	65	ILE	4.5
2	H	142	THR	4.3
3	B	68	LEU	4.2
4	C	5	PHE	4.1
4	C	30	TYR	4.1
3	B	202	TRP	4.0
3	B	300	ARG	4.0
3	B	352	PHE	3.9

*Continued on next page...*

*Continued from previous page...*

<b>Mol</b>	<b>Chain</b>	<b>Res</b>	<b>Type</b>	<b>RSRZ</b>
4	C	89	GLU	3.9
3	B	72	PHE	3.8
4	C	66	THR	3.7
3	B	11	ALA	3.7
3	B	69	LEU	3.7
3	B	356	TYR	3.6
3	B	384	VAL	3.6
3	B	263	ILE	3.5
3	B	209	TRP	3.4
2	H	144	GLY	3.4
3	B	301	ASP	3.3
4	C	78	LEU	3.3
3	B	164	ARG	3.3
3	B	210	VAL	3.3
3	B	89	TYR	3.2
3	B	214	TRP	3.1
3	B	203	TRP	3.1
3	B	298	ARG	3.1
3	B	382	SER	3.1
3	B	292	PHE	3.1
3	B	96	ILE	3.0
3	B	379	ASP	3.0
3	B	128	LEU	3.0
3	B	156	PHE	3.0
1	L	213	GLU	2.9
1	L	212	ASN	2.9
3	B	88	LEU	2.9
4	C	69	GLY	2.8
2	H	195	THR	2.8
4	C	73	TYR	2.8
4	C	23	LEU	2.7
3	B	373	GLY	2.7
3	B	360	VAL	2.7
4	C	62	VAL	2.7
3	B	199	LYS	2.6
3	B	217	ILE	2.6
3	B	380	ASN	2.6
3	B	92	LYS	2.5
3	B	64	LEU	2.5
2	H	145	SER	2.4
2	H	101	LEU	2.4
3	B	218	MET	2.3

*Continued on next page...*

*Continued from previous page...*

Mol	Chain	Res	Type	RSRZ
4	C	70	GLU	2.3
3	B	135	GLU	2.3
3	B	122	ARG	2.3
3	B	10	PHE	2.3
3	B	383	GLN	2.2
2	H	140	GLY	2.2
3	B	114	LEU	2.2
1	L	98	PHE	2.2
3	B	125	GLY	2.2
3	B	293	ASN	2.2
3	B	369	PRO	2.2
2	H	196	SER	2.2
3	B	377	ALA	2.1
2	H	183	SER	2.1
2	H	116	GLN	2.1
4	C	48	ALA	2.1
2	H	169	SER	2.1
3	B	221	ILE	2.1
4	C	79	GLY	2.1
3	B	123	LEU	2.0
3	B	456	LEU	2.0
3	B	359	ILE	2.0
4	C	47	ALA	2.0

## 6.2 Non-standard residues in protein, DNA, RNA chains [i](#)

There are no non-standard protein/DNA/RNA residues in this entry.

## 6.3 Carbohydrates [i](#)

There are no monosaccharides in this entry.

## 6.4 Ligands [i](#)

In the following table, the Atoms column lists the number of modelled atoms in the group and the number defined in the chemical component dictionary. The B-factors column lists the minimum, median, 95<sup>th</sup> percentile and maximum values of B factors of atoms in the group. The column labelled 'Q< 0.9' lists the number of atoms with occupancy less than 0.9.

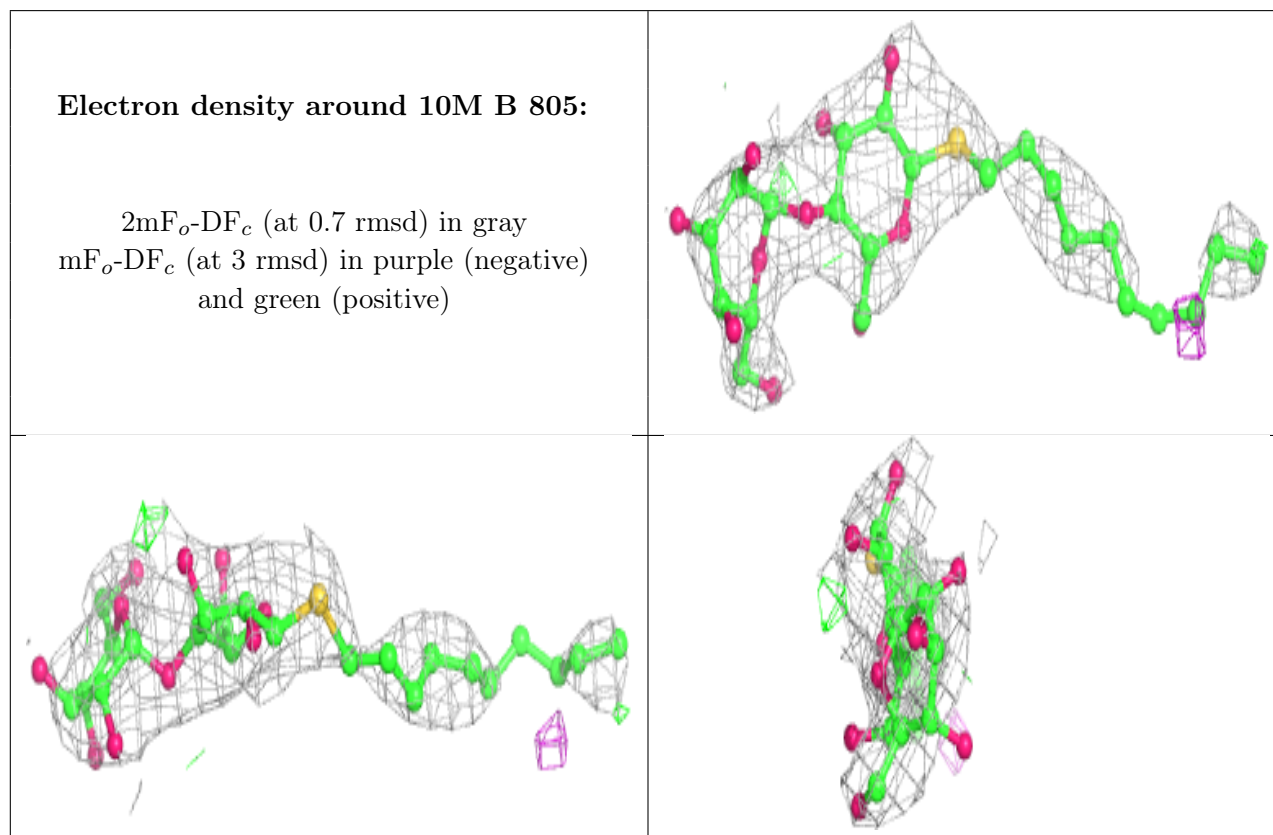
*Continued on next page...*



Continued from previous page...

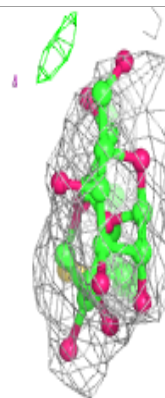
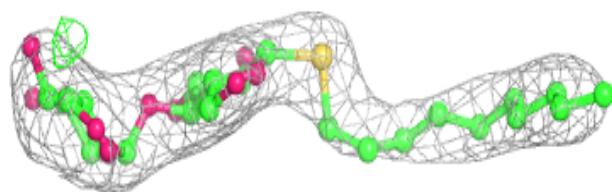
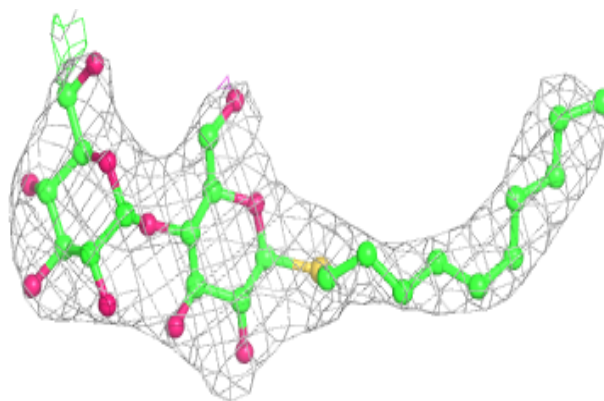
Mol	Type	Chain	Res	Atoms	RSCC	RSR	B-factors( $\text{\AA}^2$ )	Q<0.9
8	10M	B	805	33/33	0.81	0.37	87,119,132,133	0
8	10M	B	807	33/33	0.94	0.25	63,84,105,114	0
5	HEM	B	801	43/43	0.96	0.19	41,47,55,68	0
5	HEM	B	802	43/43	0.98	0.20	41,45,50,51	0
10	HEC	C	201	43/43	0.98	0.19	40,44,46,50	0
7	AXO	B	804	4/4	0.99	0.18	45,47,49,53	0
9	CA	B	806	1/1	0.99	0.23	52,52,52,52	0
6	FE	B	803	1/1	0.99	0.15	48,48,48,48	0

The following is a graphical depiction of the model fit to experimental electron density of all instances of the Ligand of Interest. In addition, ligands with molecular weight > 250 and outliers as shown on the geometry validation Tables will also be included. Each fit is shown from different orientation to approximate a three-dimensional view.



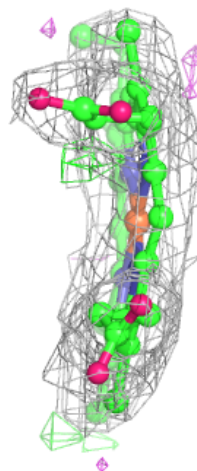
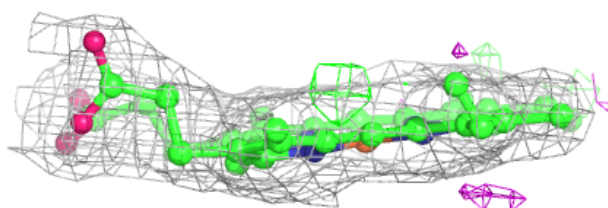
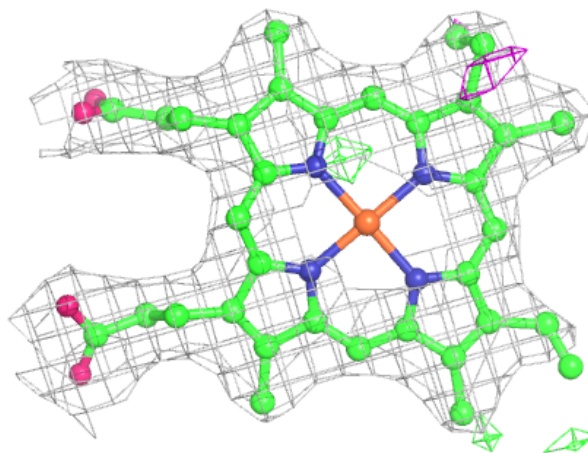
**Electron density around 10M B 807:**

$2mF_o-DF_c$  (at 0.7 rmsd) in gray  
 $mF_o-DF_c$  (at 3 rmsd) in purple (negative)  
and green (positive)



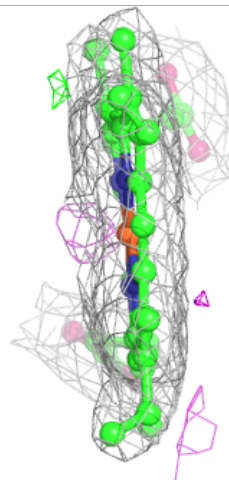
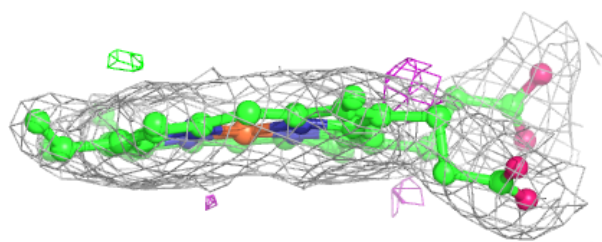
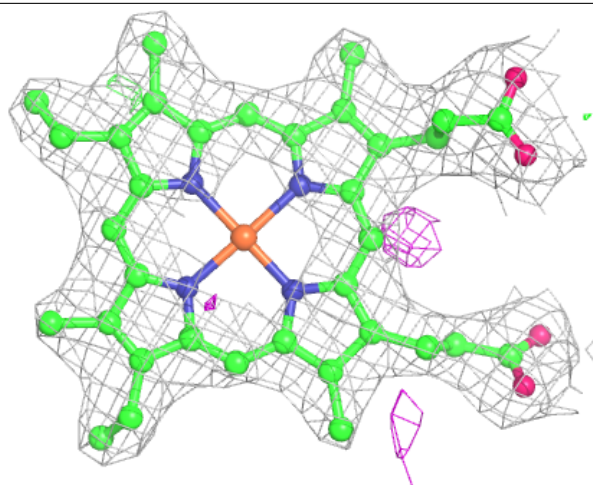
**Electron density around HEM B 801:**

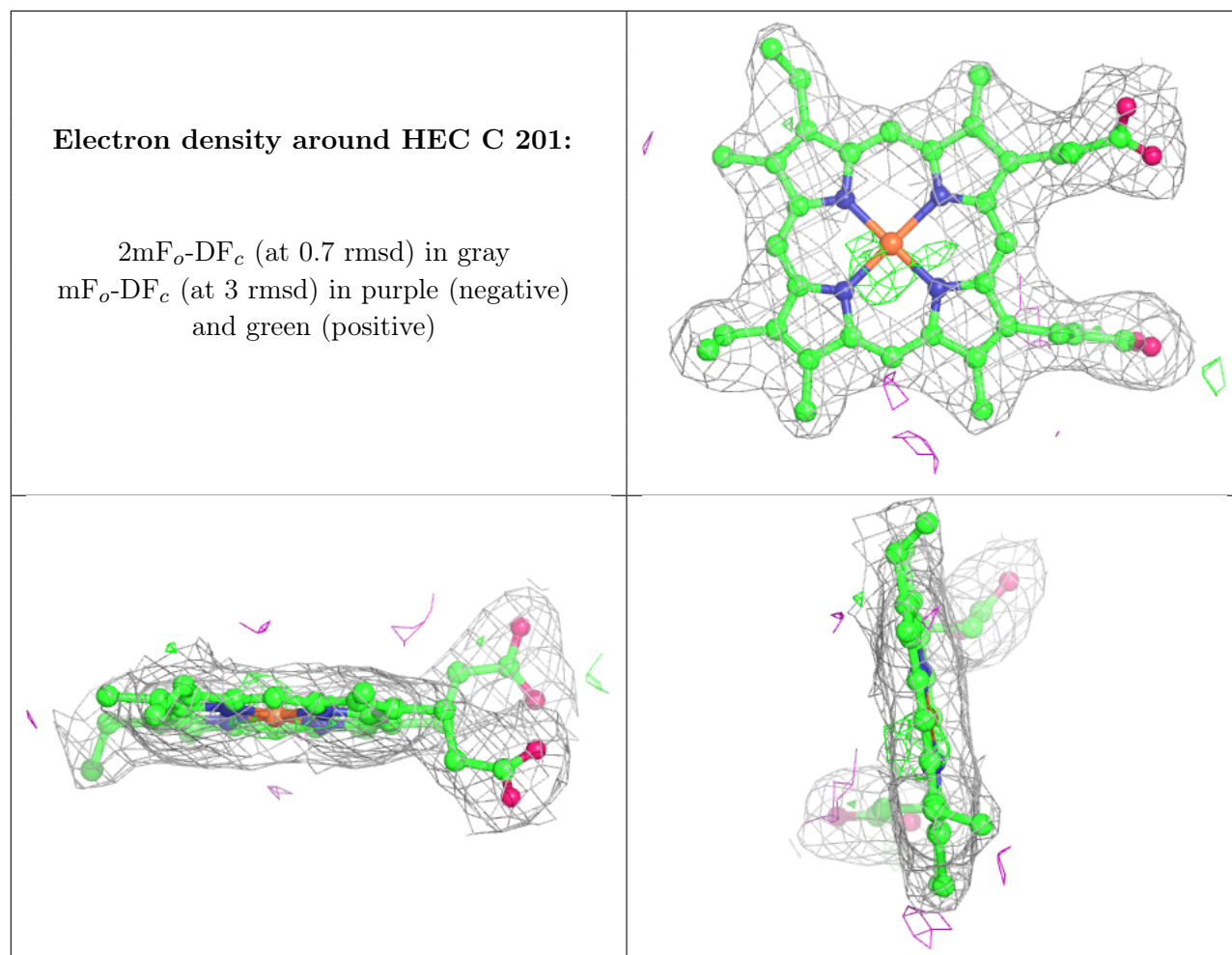
$2mF_o-DF_c$  (at 0.7 rmsd) in gray  
 $mF_o-DF_c$  (at 3 rmsd) in purple (negative)  
and green (positive)



**Electron density around HEM B 802:**

$2mF_o-DF_c$  (at 0.7 rmsd) in gray  
 $mF_o-DF_c$  (at 3 rmsd) in purple (negative)  
and green (positive)





## 6.5 Other polymers [\(i\)](#)

There are no such residues in this entry.