



# Full wwPDB X-ray Structure Validation Report ⓘ

Dec 9, 2023 – 09:50 am GMT

PDB ID : 2WJU  
Title : Glutathione transferase A2-2 in complex with glutathione  
Authors : Tars, K.; Olin, B.; Mannervik, B.  
Deposited on : 2009-05-29  
Resolution : 2.30 Å(reported)

This is a Full wwPDB X-ray Structure Validation Report for a publicly released PDB entry.

We welcome your comments at [validation@mail.wwpdb.org](mailto:validation@mail.wwpdb.org)

A user guide is available at

<https://www.wwpdb.org/validation/2017/XrayValidationReportHelp>

with specific help available everywhere you see the ⓘ symbol.

The types of validation reports are described at

<http://www.wwpdb.org/validation/2017/FAQs#types>.

---

The following versions of software and data (see [references ⓘ](#)) were used in the production of this report:

MolProbity : 4.02b-467  
Mogul : 1.8.4, CSD as541be (2020)  
Xtriage (Phenix) : 1.13  
EDS : 2.36  
buster-report : 1.1.7 (2018)  
Percentile statistics : 20191225.v01 (using entries in the PDB archive December 25th 2019)  
Refmac : 5.8.0158  
CCP4 : 7.0.044 (Gargrove)  
Ideal geometry (proteins) : Engh & Huber (2001)  
Ideal geometry (DNA, RNA) : Parkinson et al. (1996)  
Validation Pipeline (wwPDB-VP) : 2.36

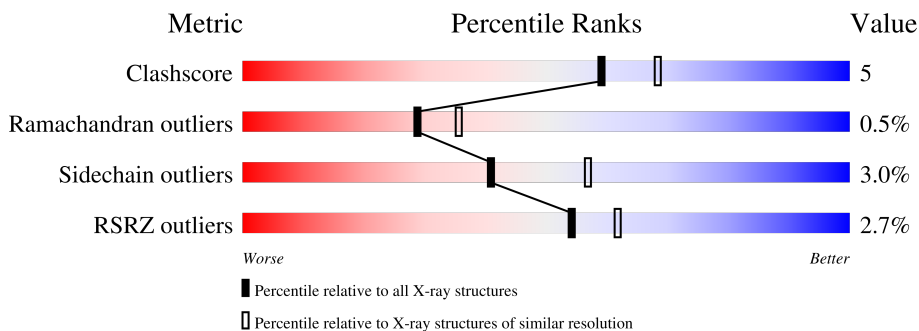
# 1 Overall quality at a glance

The following experimental techniques were used to determine the structure:

*X-RAY DIFFRACTION*

The reported resolution of this entry is 2.30 Å.

Percentile scores (ranging between 0-100) for global validation metrics of the entry are shown in the following graphic. The table shows the number of entries on which the scores are based.



Metric	Whole archive (#Entries)	Similar resolution (#Entries, resolution range(Å))
Clashscore	141614	5643 (2.30-2.30)
Ramachandran outliers	138981	5575 (2.30-2.30)
Sidechain outliers	138945	5575 (2.30-2.30)
RSRZ outliers	127900	4938 (2.30-2.30)

The table below summarises the geometric issues observed across the polymeric chains and their fit to the electron density. The red, orange, yellow and green segments of the lower bar indicate the fraction of residues that contain outliers for  $\geq 3$ , 2, 1 and 0 types of geometric quality criteria respectively. A grey segment represents the fraction of residues that are not modelled. The numeric value for each fraction is indicated below the corresponding segment, with a dot representing fractions  $\leq 5\%$ . The upper red bar (where present) indicates the fraction of residues that have poor fit to the electron density. The numeric value is given above the bar.

Mol	Chain	Length	Quality of chain
1	A	222	2% 86% 12% .
1	B	222	% 85% 14%
1	C	222	% 83% 14% .
1	D	222	% 84% 15% .
1	E	222	% 86% 13%
1	F	222	5% 85% 14% .

*Continued on next page...*

*Continued from previous page...*

Mol	Chain	Length	Quality of chain
1	G	222	 5% 89% 10%
1	H	222	 4% 81% 18%

The following table lists non-polymeric compounds, carbohydrate monomers and non-standard residues in protein, DNA, RNA chains that are outliers for geometric or electron-density-fit criteria:

Mol	Type	Chain	Res	Chirality	Geometry	Clashes	Electron density
2	GSH	A	230	X	-	-	-
2	GSH	B	230	X	-	-	-
2	GSH	C	230	X	-	-	-
2	GSH	D	230	X	-	-	-
2	GSH	E	230	X	-	-	-
2	GSH	F	230	X	-	-	-
2	GSH	G	230	X	-	-	-
2	GSH	H	230	X	-	-	-

## 2 Entry composition [i](#)

There are 3 unique types of molecules in this entry. The entry contains 15117 atoms, of which 0 are hydrogens and 0 are deuteriums.

In the tables below, the ZeroOcc column contains the number of atoms modelled with zero occupancy, the AltConf column contains the number of residues with at least one atom in alternate conformation and the Trace column contains the number of residues modelled with at most 2 atoms.

- Molecule 1 is a protein called GLUTATHIONE-S-TRANSFERASE A2-2.

Mol	Chain	Residues	Atoms					ZeroOcc	AltConf	Trace
			Total	C	N	O	S			
1	A	221	1800	1164	299	330	7	0	0	0
1	B	221	1800	1164	299	330	7	0	0	0
1	C	221	1800	1164	299	330	7	0	0	0
1	D	221	1800	1164	299	330	7	0	0	0
1	E	221	1800	1164	299	330	7	0	0	0
1	F	221	1800	1164	299	330	7	0	0	0
1	G	221	1800	1164	299	330	7	0	0	0
1	H	221	1800	1164	299	330	7	0	0	0

There are 8 discrepancies between the modelled and reference sequences:

Chain	Residue	Modelled	Actual	Comment	Reference
A	112	THR	SER	SEE REMARK 999	UNP P09210
B	112	THR	SER	SEE REMARK 999	UNP P09210
C	112	THR	SER	SEE REMARK 999	UNP P09210
D	112	THR	SER	SEE REMARK 999	UNP P09210
E	112	THR	SER	SEE REMARK 999	UNP P09210
F	112	THR	SER	SEE REMARK 999	UNP P09210
G	112	THR	SER	SEE REMARK 999	UNP P09210
H	112	THR	SER	SEE REMARK 999	UNP P09210

- Molecule 2 is GLUTATHIONE (three-letter code: GSH) (formula: C<sub>10</sub>H<sub>17</sub>N<sub>3</sub>O<sub>6</sub>S).



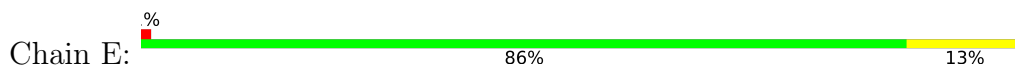
*Continued from previous page...*

<b>Mol</b>	<b>Chain</b>	<b>Residues</b>	<b>Atoms</b>	<b>ZeroOcc</b>	<b>AltConf</b>
3	E	93	Total O 93 93	0	0
3	F	57	Total O 57 57	0	0
3	G	39	Total O 39 39	0	0
3	H	47	Total O 47 47	0	0

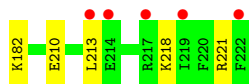
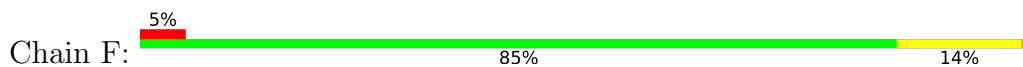




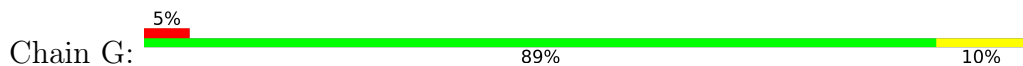
- Molecule 1: GLUTATHIONE-S-TRANSFERASE A2-2



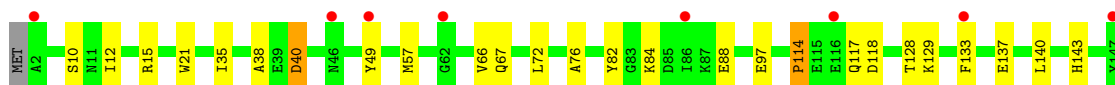
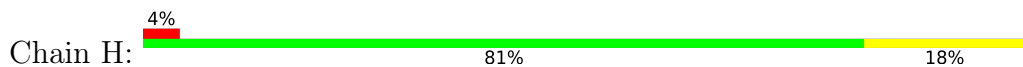
- Molecule 1: GLUTATHIONE-S-TRANSFERASE A2-2



- Molecule 1: GLUTATHIONE-S-TRANSFERASE A2-2



- Molecule 1: GLUTATHIONE-S-TRANSFERASE A2-2





## 4 Data and refinement statistics

Property	Value	Source
Space group	P 1	Depositor
Cell constants a, b, c, $\alpha$ , $\beta$ , $\gamma$	54.16Å 85.50Å 113.42Å 96.00° 101.78° 97.46°	Depositor
Resolution (Å)	42.00 – 2.30 42.04 – 2.30	Depositor EDS
% Data completeness (in resolution range)	92.0 (42.00-2.30) 92.0 (42.04-2.30)	Depositor EDS
$R_{merge}$	0.06	Depositor
$R_{sym}$	(Not available)	Depositor
$\langle I/\sigma(I) \rangle$ <sup>1</sup>	2.15 (at 2.29Å)	Xtrriage
Refinement program	REFMAC 5.2.0019	Depositor
R, $R_{free}$	0.246 , 0.297 0.247 , (Not available)	Depositor DCC
$R_{free}$ test set	No test flags present.	wwPDB-VP
Wilson B-factor (Å <sup>2</sup> )	34.2	Xtrriage
Anisotropy	0.101	Xtrriage
Bulk solvent $k_{sol}$ (e/Å <sup>3</sup> ), $B_{sol}$ (Å <sup>2</sup> )	0.30 , 36.8	EDS
L-test for twinning <sup>2</sup>	$\langle  L  \rangle = 0.50$ , $\langle L^2 \rangle = 0.33$	Xtrriage
Estimated twinning fraction	No twinning to report.	Xtrriage
$F_o, F_c$ correlation	0.91	EDS
Total number of atoms	15117	wwPDB-VP
Average B, all atoms (Å <sup>2</sup> )	36.0	wwPDB-VP

Xtrriage's analysis on translational NCS is as follows: *The largest off-origin peak in the Patterson function is 7.75% of the height of the origin peak. No significant pseudotranslation is detected.*

<sup>1</sup>Intensities estimated from amplitudes.

<sup>2</sup>Theoretical values of  $\langle |L| \rangle$ ,  $\langle L^2 \rangle$  for acentric reflections are 0.5, 0.333 respectively for untwinned datasets, and 0.375, 0.2 for perfectly twinned datasets.

## 5 Model quality [i](#)

### 5.1 Standard geometry [i](#)

Bond lengths and bond angles in the following residue types are not validated in this section: GSH

The Z score for a bond length (or angle) is the number of standard deviations the observed value is removed from the expected value. A bond length (or angle) with  $|Z| > 5$  is considered an outlier worth inspection. RMSZ is the root-mean-square of all Z scores of the bond lengths (or angles).

Mol	Chain	Bond lengths		Bond angles	
		RMSZ	# Z  >5	RMSZ	# Z  >5
1	A	0.45	0/1835	0.58	0/2465
1	B	0.46	0/1835	0.60	0/2465
1	C	0.42	0/1835	0.57	0/2465
1	D	0.44	0/1835	0.59	0/2465
1	E	0.42	0/1835	0.56	0/2465
1	F	0.41	0/1835	0.55	0/2465
1	G	0.41	0/1835	0.55	0/2465
1	H	0.40	0/1835	0.55	0/2465
All	All	0.43	0/14680	0.57	0/19720

There are no bond length outliers.

There are no bond angle outliers.

There are no chirality outliers.

There are no planarity outliers.

### 5.2 Too-close contacts [i](#)

In the following table, the Non-H and H(model) columns list the number of non-hydrogen atoms and hydrogen atoms in the chain respectively. The H(added) column lists the number of hydrogen atoms added and optimized by MolProbity. The Clashes column lists the number of clashes within the asymmetric unit, whereas Symm-Clashes lists symmetry-related clashes.

Mol	Chain	Non-H	H(model)	H(added)	Clashes	Symm-Clashes
1	A	1800	0	1858	18	0
1	B	1800	0	1858	18	0
1	C	1800	0	1858	21	0
1	D	1800	0	1858	19	0
1	E	1800	0	1858	16	0

*Continued on next page...*

Continued from previous page...

Mol	Chain	Non-H	H(model)	H(added)	Clashes	Symm-Clashes
1	F	1800	0	1858	17	0
1	G	1800	0	1858	11	0
1	H	1800	0	1858	24	0
2	A	20	0	15	2	0
2	B	20	0	15	2	0
2	C	20	0	15	0	0
2	D	20	0	15	0	0
2	E	20	0	15	1	0
2	F	20	0	15	3	0
2	G	20	0	15	1	0
2	H	20	0	15	1	0
3	A	80	0	0	1	0
3	B	91	0	0	1	0
3	C	72	0	0	3	0
3	D	78	0	0	1	0
3	E	93	0	0	4	0
3	F	57	0	0	0	0
3	G	39	0	0	0	0
3	H	47	0	0	1	0
All	All	15117	0	14984	139	0

The all-atom clashscore is defined as the number of clashes found per 1000 atoms (including hydrogen atoms). The all-atom clashscore for this structure is 5.

All (139) close contacts within the same asymmetric unit are listed below, sorted by their clash magnitude.

Atom-1	Atom-2	Interatomic distance (Å)	Clash overlap (Å)
1:B:102:LEU:HD23	1:B:163:LEU:HD21	1.71	0.72
1:E:112:THR:HG22	1:E:116:GLU:HB2	1.72	0.72
1:H:114:PRO:HA	1:H:117:GLN:HG3	1.74	0.69
1:A:86:ILE:HG22	3:A:2036:HOH:O	1.93	0.67
1:F:15:ARG:HD2	2:F:230:GSH:HG13	1.77	0.66
1:D:50:LEU:HB2	1:D:53:GLN:HA	1.81	0.61
1:F:133:PHE:CZ	1:F:167:VAL:HG11	2.36	0.60
1:H:128:THR:O	1:H:133:PHE:HB2	2.02	0.60
1:F:179:PRO:HA	1:F:182:LYS:HE3	1.84	0.60
1:G:44:LEU:HA	1:G:49:TYR:HD2	1.67	0.60
1:A:66:VAL:O	1:A:67:GLN:HB2	2.01	0.59
1:D:209:ASP:O	1:D:213:LEU:HB2	2.03	0.58
1:E:112:THR:CG2	1:E:116:GLU:HB2	2.33	0.58
1:H:72:LEU:HB3	1:H:155:ARG:NH2	2.18	0.58

Continued on next page...

*Continued from previous page...*

Atom-1	Atom-2	Interatomic distance (Å)	Clash overlap (Å)
1:F:129:LYS:HE3	1:F:174:LEU:HD23	1.86	0.56
1:C:45:ARG:HE	1:C:53:GLN:HB3	1.69	0.56
1:E:6:LYS:HB2	3:E:2001:HOH:O	2.05	0.56
1:C:102:LEU:HD23	1:C:163:LEU:HD21	1.87	0.55
1:H:160:LEU:O	1:H:164:LEU:HG	2.07	0.55
1:H:15:ARG:HD2	2:H:230:GSH:HG13	1.89	0.55
1:H:76:ALA:HB1	1:H:155:ARG:HD2	1.89	0.55
1:C:112:THR:HG23	1:C:116:GLU:HB2	1.89	0.54
1:E:190:ASN:ND2	3:E:2073:HOH:O	2.39	0.54
1:A:15:ARG:HD2	2:A:230:GSH:HG13	1.89	0.54
1:C:87:LYS:NZ	1:D:61:ASP:O	2.29	0.53
1:E:66:VAL:O	1:E:67:GLN:HB2	2.09	0.53
1:D:63:MET:HE1	1:D:74:TYR:CZ	2.43	0.53
1:E:85:ASP:HA	3:E:2034:HOH:O	2.10	0.52
1:A:128:THR:O	1:A:133:PHE:HB2	2.09	0.51
1:A:6:LYS:HZ2	1:A:33:LYS:HB2	1.75	0.51
1:C:38:ALA:HB1	1:C:221:ARG:HH11	1.74	0.51
1:C:210:GLU:HA	1:C:213:LEU:HB2	1.93	0.51
1:C:109:LEU:O	1:C:112:THR:HB	2.10	0.51
1:H:76:ALA:CB	1:H:155:ARG:HD2	2.41	0.51
1:E:35:ILE:HG23	1:E:40:ASP:HB2	1.94	0.50
1:H:140:LEU:HA	1:H:143:HIS:CE1	2.47	0.50
1:B:45:ARG:NH1	1:B:221:ARG:HH21	2.10	0.50
1:B:187:ARG:NH2	3:B:2077:HOH:O	2.31	0.50
1:G:99:ILE:HG13	1:G:136:PHE:CZ	2.46	0.50
1:B:76:ALA:HB1	1:B:155:ARG:HD2	1.94	0.50
1:D:168:GLU:OE1	1:D:185:LYS:NZ	2.42	0.49
1:H:84:LYS:HG2	1:H:88:GLU:OE1	2.11	0.49
1:H:129:LYS:HE3	1:H:174:LEU:HD23	1.95	0.49
1:G:82:TYR:O	1:G:89:LYS:HG2	2.13	0.49
1:D:21:TRP:CE2	1:D:162:GLU:HG3	2.47	0.49
1:C:11:ASN:OD1	1:C:205:LYS:HE3	2.13	0.49
1:G:164:LEU:HD21	1:G:181:LEU:HD22	1.93	0.49
1:B:78:LYS:HD3	1:B:79:TYR:CZ	2.48	0.49
1:F:66:VAL:O	1:F:67:GLN:HB2	2.13	0.48
1:H:35:ILE:HG23	1:H:40:ASP:HB2	1.93	0.48
1:C:24:ALA:O	1:C:193:THR:HB	2.13	0.48
1:G:69:ARG:HD2	1:H:97:GLU:OE1	2.13	0.48
1:B:76:ALA:CB	1:B:155:ARG:HD2	2.44	0.48
1:F:99:ILE:HG13	1:F:136:PHE:CZ	2.48	0.48
1:F:133:PHE:HZ	1:F:167:VAL:HG11	1.79	0.48

*Continued on next page...*

*Continued from previous page...*

Atom-1	Atom-2	Interatomic distance (Å)	Clash overlap (Å)
1:H:168:GLU:HG3	1:H:172:SER:HB3	1.95	0.48
1:E:59:GLU:HA	1:E:63:MET:O	2.13	0.48
1:H:38:ALA:HB2	1:H:218:LYS:O	2.14	0.47
1:H:179:PRO:HA	1:H:182:LYS:HD2	1.95	0.47
1:A:45:ARG:HE	1:A:53:GLN:HB3	1.79	0.47
1:B:24:ALA:O	1:B:193:THR:HB	2.15	0.47
1:A:45:ARG:HG3	1:A:50:LEU:HD12	1.95	0.47
1:H:49:TYR:HD2	1:H:57:MET:CE	2.27	0.47
1:A:15:ARG:CD	2:A:230:GSH:HG13	2.45	0.47
1:B:127:LYS:HE3	1:B:131:ARG:NH1	2.30	0.47
1:A:168:GLU:OE1	1:A:185:LYS:NZ	2.43	0.47
1:B:209:ASP:O	1:B:213:LEU:HB2	2.16	0.46
1:G:140:LEU:HA	1:G:143:HIS:CE1	2.50	0.46
1:C:96:ILE:HD12	3:C:2038:HOH:O	2.15	0.46
1:B:15:ARG:HD2	2:B:230:GSH:HG13	1.96	0.46
1:F:123:LEU:HA	1:F:126:GLU:HB3	1.95	0.46
1:H:176:SER:HA	1:H:182:LYS:HE2	1.98	0.46
1:H:214:GLU:OE2	1:H:218:LYS:HE2	2.14	0.46
1:C:128:THR:O	1:C:133:PHE:HB2	2.15	0.46
1:D:25:ALA:HB1	1:D:158:ILE:HD12	1.97	0.46
1:F:210:GLU:HA	1:F:213:LEU:HB3	1.98	0.46
1:E:55:VAL:O	2:E:230:GSH:N2	2.48	0.46
1:A:82:TYR:O	1:A:89:LYS:HG2	2.16	0.45
1:F:55:VAL:O	2:F:230:GSH:HG12	2.16	0.45
1:B:99:ILE:HG13	1:B:136:PHE:CZ	2.52	0.45
1:D:7:LEU:HD22	1:D:58:VAL:HG22	1.98	0.45
1:B:4:LYS:HB2	1:B:31:GLU:HG3	1.99	0.45
1:C:66:VAL:O	1:C:67:GLN:HB2	2.17	0.45
1:F:109:LEU:N	1:F:110:PRO:HD2	2.32	0.45
1:D:135:ALA:O	1:D:139:VAL:HG23	2.17	0.45
1:D:59:GLU:HA	1:D:63:MET:O	2.17	0.44
1:A:102:LEU:HD23	1:A:163:LEU:HD21	1.98	0.44
1:C:140:LEU:HA	1:C:143:HIS:CE1	2.53	0.44
1:H:10:SER:OG	1:H:12:ILE:HG12	2.17	0.44
1:B:66:VAL:O	1:B:67:GLN:HB2	2.18	0.44
1:C:82:TYR:O	1:C:89:LYS:HG2	2.17	0.44
1:G:65:LEU:HD13	1:G:71:ILE:HA	2.00	0.44
1:D:109:LEU:HB3	1:D:110:PRO:HD3	2.00	0.43
1:H:66:VAL:O	1:H:67:GLN:HB2	2.18	0.43
1:H:218:LYS:HD3	1:H:218:LYS:HA	1.70	0.43
1:A:4:LYS:HD2	1:A:31:GLU:HG3	2.00	0.43

*Continued on next page...*

*Continued from previous page...*

Atom-1	Atom-2	Interatomic distance (Å)	Clash overlap (Å)
1:D:146:ASP:HB3	1:D:187:ARG:NE	2.32	0.43
1:E:168:GLU:HG3	3:E:2067:HOH:O	2.17	0.43
1:G:135:ALA:O	1:G:139:VAL:HG23	2.18	0.43
1:C:4:LYS:HB3	1:C:30:PHE:HA	2.01	0.43
1:D:52:PHE:O	1:D:53:GLN:HG2	2.19	0.43
1:F:7:LEU:HD22	1:F:58:VAL:HG22	2.00	0.43
1:A:84:LYS:HD3	1:D:46:ASN:O	2.18	0.43
1:E:165:TYR:O	1:E:169:GLU:HG3	2.18	0.43
1:E:208:MET:HE2	1:E:213:LEU:HD23	1.99	0.43
1:A:17:GLU:OE1	1:A:20:ARG:HD2	2.18	0.43
1:F:39:GLU:HA	1:F:42:ASP:HB2	2.01	0.43
1:F:218:LYS:HA	1:F:218:LYS:HD3	1.92	0.43
1:E:168:GLU:OE1	1:E:185:LYS:NZ	2.51	0.42
1:B:112:THR:HG21	1:B:120:LYS:HG3	2.00	0.42
1:D:25:ALA:CB	1:D:158:ILE:HD12	2.49	0.42
1:D:99:ILE:HG23	1:D:163:LEU:HD22	2.00	0.42
1:G:24:ALA:O	1:G:193:THR:HB	2.19	0.42
1:C:38:ALA:HB1	1:C:221:ARG:NH1	2.35	0.42
1:C:140:LEU:HA	1:C:143:HIS:HE1	1.85	0.42
1:G:220:PHE:CE1	2:G:230:GSH:HB22	2.55	0.42
1:E:127:LYS:O	1:E:131:ARG:HB3	2.19	0.42
1:B:127:LYS:O	1:B:131:ARG:HB3	2.20	0.42
1:B:128:THR:O	1:B:133:PHE:HB2	2.20	0.42
1:C:168:GLU:HB2	3:C:2063:HOH:O	2.19	0.42
1:F:82:TYR:O	1:F:89:LYS:HG2	2.20	0.42
1:C:70:ALA:HA	1:D:93:ASP:HB3	2.02	0.41
1:A:101:ASP:OD2	2:B:230:GSH:N1	2.50	0.41
1:G:21:TRP:CE2	1:G:162:GLU:HG3	2.55	0.41
1:C:9:TYR:O	1:C:34:PHE:HA	2.20	0.41
1:A:6:LYS:NZ	1:A:33:LYS:HB2	2.35	0.41
1:B:112:THR:CG2	1:B:116:GLU:HB3	2.51	0.41
1:D:161:VAL:HG21	1:D:188:ILE:HB	2.02	0.41
1:E:6:LYS:HD3	1:E:8:HIS:NE2	2.36	0.41
1:C:33:LYS:N	3:C:2016:HOH:O	2.53	0.41
1:E:90:ALA:HB1	1:F:65:LEU:HD21	2.02	0.41
1:F:15:ARG:CD	2:F:230:GSH:HG13	2.45	0.41
1:H:21:TRP:CE2	1:H:162:GLU:HG3	2.55	0.41
1:A:76:ALA:CB	1:A:155:ARG:HD2	2.51	0.41
1:D:90:ALA:HA	3:D:2036:HOH:O	2.20	0.41
1:H:118:ASP:HB2	3:H:2024:HOH:O	2.20	0.40
1:H:137:GLU:OE1	1:H:180:LEU:HB2	2.21	0.40

*Continued on next page...*

Continued from previous page...

Atom-1	Atom-2	Interatomic distance (Å)	Clash overlap (Å)
1:B:105:MET:HE2	1:B:124:ILE:HG13	2.04	0.40
1:A:66:VAL:O	1:A:67:GLN:CB	2.69	0.40

There are no symmetry-related clashes.

## 5.3 Torsion angles [i](#)

### 5.3.1 Protein backbone [i](#)

In the following table, the Percentiles column shows the percent Ramachandran outliers of the chain as a percentile score with respect to all X-ray entries followed by that with respect to entries of similar resolution.

The Analysed column shows the number of residues for which the backbone conformation was analysed, and the total number of residues.

Mol	Chain	Analysed	Favoured	Allowed	Outliers	Percentiles	
1	A	219/222 (99%)	209 (95%)	8 (4%)	2 (1%)	17	20
1	B	219/222 (99%)	210 (96%)	8 (4%)	1 (0%)	29	35
1	C	219/222 (99%)	212 (97%)	7 (3%)	0	100	100
1	D	219/222 (99%)	207 (94%)	12 (6%)	0	100	100
1	E	219/222 (99%)	212 (97%)	6 (3%)	1 (0%)	29	35
1	F	219/222 (99%)	209 (95%)	8 (4%)	2 (1%)	17	20
1	G	219/222 (99%)	203 (93%)	16 (7%)	0	100	100
1	H	219/222 (99%)	206 (94%)	11 (5%)	2 (1%)	17	20
All	All	1752/1776 (99%)	1668 (95%)	76 (4%)	8 (0%)	29	35

All (8) Ramachandran outliers are listed below:

Mol	Chain	Res	Type
1	A	67	GLN
1	F	13	ARG
1	B	13	ARG
1	F	11	ASN
1	H	151	ASN
1	A	114	PRO
1	E	67	GLN
1	H	114	PRO

### 5.3.2 Protein sidechains

In the following table, the Percentiles column shows the percent sidechain outliers of the chain as a percentile score with respect to all X-ray entries followed by that with respect to entries of similar resolution.

The Analysed column shows the number of residues for which the sidechain conformation was analysed, and the total number of residues.

Mol	Chain	Analysed	Rotameric	Outliers	Percentiles	
1	A	197/198 (100%)	193 (98%)	4 (2%)	55	72
1	B	197/198 (100%)	193 (98%)	4 (2%)	55	72
1	C	197/198 (100%)	187 (95%)	10 (5%)	24	33
1	D	197/198 (100%)	190 (96%)	7 (4%)	35	49
1	E	197/198 (100%)	190 (96%)	7 (4%)	35	49
1	F	197/198 (100%)	191 (97%)	6 (3%)	41	57
1	G	197/198 (100%)	191 (97%)	6 (3%)	41	57
1	H	197/198 (100%)	193 (98%)	4 (2%)	55	72
All	All	1576/1584 (100%)	1528 (97%)	48 (3%)	41	57

All (48) residues with a non-rotameric sidechain are listed below:

Mol	Chain	Res	Type
1	A	82	TYR
1	A	116	GLU
1	A	143	HIS
1	A	210	GLU
1	B	18	SER
1	B	82	TYR
1	B	129	LYS
1	B	221	ARG
1	C	3	GLU
1	C	40	ASP
1	C	82	TYR
1	C	112	THR
1	C	117	GLN
1	C	143	HIS
1	C	170	LEU
1	C	195	LYS
1	C	210	GLU
1	C	213	LEU
1	D	43	LYS

*Continued on next page...*



*Continued from previous page...*

Mol	Chain	Res	Type
1	D	53	GLN
1	D	82	TYR
1	D	170	LEU
1	D	213	LEU
1	D	215	GLU
1	D	221	ARG
1	E	82	TYR
1	E	107	LEU
1	E	115	GLU
1	E	126	GLU
1	E	143	HIS
1	E	170	LEU
1	E	187	ARG
1	F	36	LYS
1	F	82	TYR
1	F	123	LEU
1	F	143	HIS
1	F	170	LEU
1	F	221	ARG
1	G	42	ASP
1	G	55	VAL
1	G	65	LEU
1	G	82	TYR
1	G	116	GLU
1	G	170	LEU
1	H	40	ASP
1	H	82	TYR
1	H	177	SER
1	H	221	ARG

Sometimes sidechains can be flipped to improve hydrogen bonding and reduce clashes. All (8) such sidechains are listed below:

Mol	Chain	Res	Type
1	A	130	ASN
1	C	54	GLN
1	C	117	GLN
1	D	117	GLN
1	E	54	GLN
1	F	130	ASN
1	G	54	GLN
1	G	113	GLN

### 5.3.3 RNA [i](#)

There are no RNA molecules in this entry.

## 5.4 Non-standard residues in protein, DNA, RNA chains [i](#)

There are no non-standard protein/DNA/RNA residues in this entry.

## 5.5 Carbohydrates [i](#)

There are no monosaccharides in this entry.

## 5.6 Ligand geometry [i](#)

8 ligands are modelled in this entry.

In the following table, the Counts columns list the number of bonds (or angles) for which Mogul statistics could be retrieved, the number of bonds (or angles) that are observed in the model and the number of bonds (or angles) that are defined in the Chemical Component Dictionary. The Link column lists molecule types, if any, to which the group is linked. The Z score for a bond length (or angle) is the number of standard deviations the observed value is removed from the expected value. A bond length (or angle) with  $|Z| > 2$  is considered an outlier worth inspection. RMSZ is the root-mean-square of all Z scores of the bond lengths (or angles).

Mol	Type	Chain	Res	Link	Bond lengths			Bond angles		
					Counts	RMSZ	# Z  > 2	Counts	RMSZ	# Z  > 2
2	GSH	D	230	-	18,19,19	3.17	2 (11%)	23,24,24	1.17	3 (13%)
2	GSH	H	230	-	18,19,19	3.12	2 (11%)	23,24,24	1.16	3 (13%)
2	GSH	F	230	-	18,19,19	3.14	2 (11%)	23,24,24	1.17	3 (13%)
2	GSH	C	230	-	18,19,19	3.13	2 (11%)	23,24,24	1.38	5 (21%)
2	GSH	E	230	-	18,19,19	3.13	2 (11%)	23,24,24	1.28	3 (13%)
2	GSH	A	230	-	18,19,19	3.11	2 (11%)	23,24,24	1.27	4 (17%)
2	GSH	B	230	-	18,19,19	3.26	2 (11%)	23,24,24	1.16	3 (13%)
2	GSH	G	230	-	18,19,19	3.11	2 (11%)	23,24,24	1.20	3 (13%)

In the following table, the Chirals column lists the number of chiral outliers, the number of chiral centers analysed, the number of these observed in the model and the number defined in the Chemical Component Dictionary. Similar counts are reported in the Torsion and Rings columns. '-' means no outliers of that kind were identified.

Mol	Type	Chain	Res	Link	Chirals	Torsions	Rings
2	GSH	D	230	-	1/1/6/8	5/24/24/24	-
2	GSH	H	230	-	1/1/6/8	10/24/24/24	-
2	GSH	F	230	-	1/1/6/8	9/24/24/24	-
2	GSH	C	230	-	1/1/6/8	7/24/24/24	-
2	GSH	E	230	-	1/1/6/8	5/24/24/24	-
2	GSH	A	230	-	1/1/6/8	11/24/24/24	-
2	GSH	B	230	-	1/1/6/8	9/24/24/24	-
2	GSH	G	230	-	1/1/6/8	6/24/24/24	-

All (16) bond length outliers are listed below:

Mol	Chain	Res	Type	Atoms	Z	Observed(Å)	Ideal(Å)
2	B	230	GSH	O2-C2	9.85	1.43	1.23
2	D	230	GSH	O2-C2	9.49	1.42	1.23
2	E	230	GSH	O2-C2	9.45	1.42	1.23
2	C	230	GSH	O2-C2	9.35	1.42	1.23
2	F	230	GSH	O2-C2	9.35	1.42	1.23
2	B	230	GSH	OE1-CD1	9.22	1.42	1.23
2	A	230	GSH	O2-C2	9.20	1.41	1.23
2	H	230	GSH	O2-C2	9.20	1.41	1.23
2	D	230	GSH	OE1-CD1	9.14	1.41	1.23
2	G	230	GSH	O2-C2	9.13	1.41	1.23
2	G	230	GSH	OE1-CD1	9.11	1.41	1.23
2	H	230	GSH	OE1-CD1	9.07	1.41	1.23
2	F	230	GSH	OE1-CD1	9.06	1.41	1.23
2	C	230	GSH	OE1-CD1	9.01	1.41	1.23
2	A	230	GSH	OE1-CD1	8.98	1.41	1.23
2	E	230	GSH	OE1-CD1	8.89	1.41	1.23

All (27) bond angle outliers are listed below:

Mol	Chain	Res	Type	Atoms	Z	Observed(°)	Ideal(°)
2	C	230	GSH	CA2-CB2-SG2	-3.63	110.11	114.19
2	E	230	GSH	O12-C1-CA1	3.00	123.61	113.38
2	D	230	GSH	O12-C1-CA1	2.88	123.19	113.38
2	G	230	GSH	O12-C1-O11	-2.86	117.60	124.09
2	A	230	GSH	CA2-CB2-SG2	2.82	117.37	114.19
2	B	230	GSH	O12-C1-CA1	2.78	122.86	113.38
2	G	230	GSH	O12-C1-CA1	2.72	122.64	113.38
2	E	230	GSH	O12-C1-O11	-2.66	118.05	124.09
2	D	230	GSH	O12-C1-O11	-2.64	118.10	124.09

*Continued on next page...*

*Continued from previous page...*

Mol	Chain	Res	Type	Atoms	Z	Observed(°)	Ideal(°)
2	H	230	GSH	O12-C1-CA1	2.63	122.35	113.38
2	A	230	GSH	O12-C1-O11	-2.57	118.26	124.09
2	C	230	GSH	O12-C1-CA1	2.55	122.08	113.38
2	F	230	GSH	O12-C1-CA1	2.50	121.91	113.38
2	A	230	GSH	O12-C1-CA1	2.41	121.58	113.38
2	F	230	GSH	O12-C1-O11	-2.36	118.74	124.09
2	B	230	GSH	O12-C1-O11	-2.30	118.86	124.09
2	H	230	GSH	O32-C3-CA3	2.28	120.65	112.74
2	C	230	GSH	O32-C3-CA3	2.27	120.64	112.74
2	H	230	GSH	O12-C1-O11	-2.26	118.95	124.09
2	A	230	GSH	O32-C3-CA3	2.23	120.48	112.74
2	G	230	GSH	O32-C3-CA3	2.22	120.44	112.74
2	C	230	GSH	O12-C1-O11	-2.19	119.12	124.09
2	D	230	GSH	O32-C3-CA3	2.15	120.21	112.74
2	F	230	GSH	O32-C3-CA3	2.11	120.07	112.74
2	C	230	GSH	O32-C3-O31	-2.08	118.12	123.30
2	E	230	GSH	O32-C3-CA3	2.08	119.96	112.74
2	B	230	GSH	O32-C3-CA3	2.07	119.93	112.74

All (8) chirality outliers are listed below:

Mol	Chain	Res	Type	Atom
2	A	230	GSH	CA1
2	B	230	GSH	CA1
2	C	230	GSH	CA1
2	D	230	GSH	CA1
2	E	230	GSH	CA1
2	F	230	GSH	CA1
2	G	230	GSH	CA1
2	H	230	GSH	CA1

All (62) torsion outliers are listed below:

Mol	Chain	Res	Type	Atoms
2	A	230	GSH	O11-C1-CA1-N1
2	A	230	GSH	N2-CA2-CB2-SG2
2	A	230	GSH	C2-CA2-CB2-SG2
2	B	230	GSH	CG1-CD1-N2-CA2
2	B	230	GSH	C2-CA2-CB2-SG2
2	C	230	GSH	O11-C1-CA1-N1
2	C	230	GSH	N2-CA2-CB2-SG2
2	C	230	GSH	C2-CA2-CB2-SG2

*Continued on next page...*

*Continued from previous page...*

Mol	Chain	Res	Type	Atoms
2	D	230	GSH	O11-C1-CA1-N1
2	D	230	GSH	N1-CA1-CB1-CG1
2	D	230	GSH	C1-CA1-CB1-CG1
2	F	230	GSH	N1-CA1-CB1-CG1
2	F	230	GSH	CG1-CD1-N2-CA2
2	G	230	GSH	C1-CA1-CB1-CG1
2	H	230	GSH	O31-C3-CA3-N3
2	H	230	GSH	O32-C3-CA3-N3
2	B	230	GSH	OE1-CD1-N2-CA2
2	F	230	GSH	OE1-CD1-N2-CA2
2	H	230	GSH	O12-C1-CA1-N1
2	E	230	GSH	O12-C1-CA1-CB1
2	F	230	GSH	O12-C1-CA1-CB1
2	G	230	GSH	CA1-CB1-CG1-CD1
2	H	230	GSH	OE1-CD1-N2-CA2
2	A	230	GSH	O12-C1-CA1-N1
2	C	230	GSH	O12-C1-CA1-N1
2	H	230	GSH	CG1-CD1-N2-CA2
2	A	230	GSH	OE1-CD1-N2-CA2
2	D	230	GSH	O12-C1-CA1-N1
2	E	230	GSH	O11-C1-CA1-CB1
2	A	230	GSH	CG1-CD1-N2-CA2
2	A	230	GSH	CA1-CB1-CG1-CD1
2	B	230	GSH	CA1-CB1-CG1-CD1
2	C	230	GSH	CA1-CB1-CG1-CD1
2	E	230	GSH	CA1-CB1-CG1-CD1
2	F	230	GSH	CA1-CB1-CG1-CD1
2	B	230	GSH	O12-C1-CA1-CB1
2	F	230	GSH	O11-C1-CA1-CB1
2	D	230	GSH	CA1-CB1-CG1-CD1
2	H	230	GSH	CA1-CB1-CG1-CD1
2	H	230	GSH	C2-CA2-CB2-SG2
2	B	230	GSH	O11-C1-CA1-CB1
2	H	230	GSH	O11-C1-CA1-CB1
2	H	230	GSH	O12-C1-CA1-CB1
2	C	230	GSH	O12-C1-CA1-CB1
2	E	230	GSH	O12-C1-CA1-N1
2	F	230	GSH	O12-C1-CA1-N1
2	C	230	GSH	O11-C1-CA1-CB1
2	B	230	GSH	N2-CA2-CB2-SG2
2	E	230	GSH	O11-C1-CA1-N1
2	F	230	GSH	O11-C1-CA1-N1

*Continued on next page...*

*Continued from previous page...*

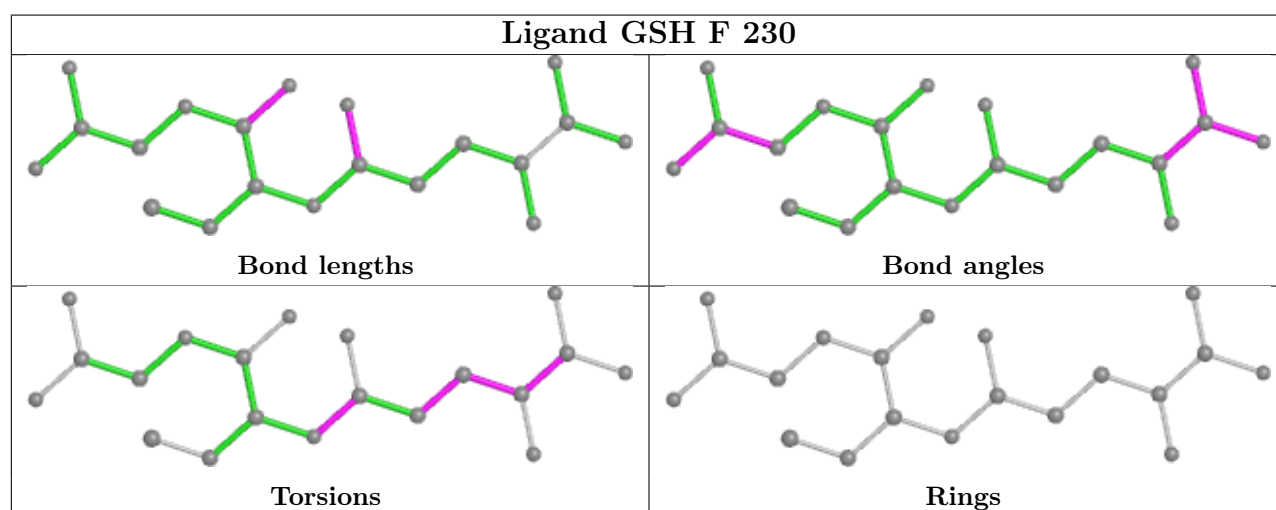
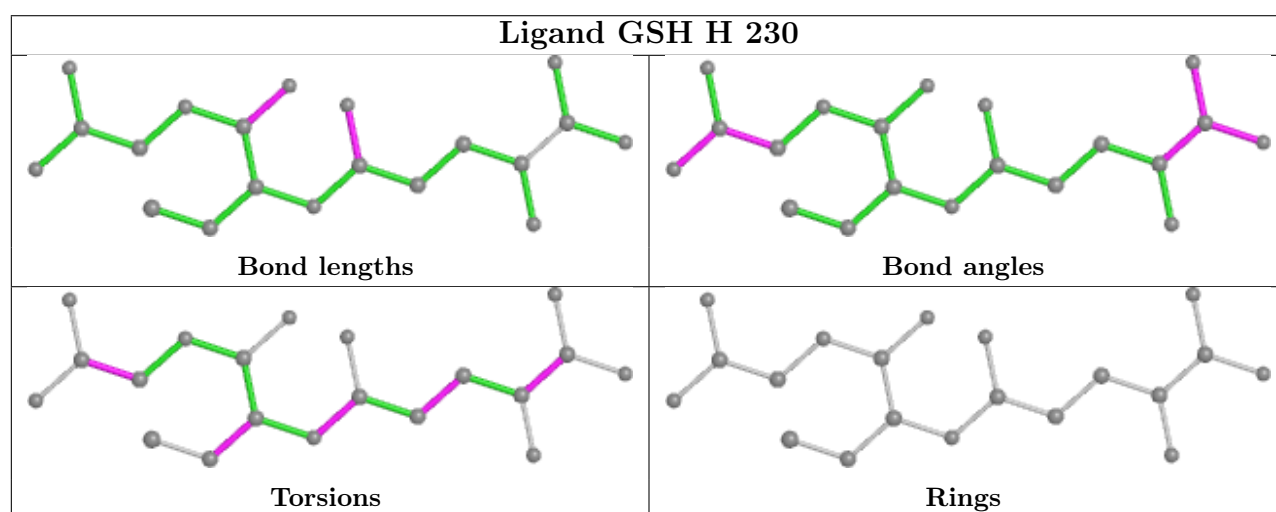
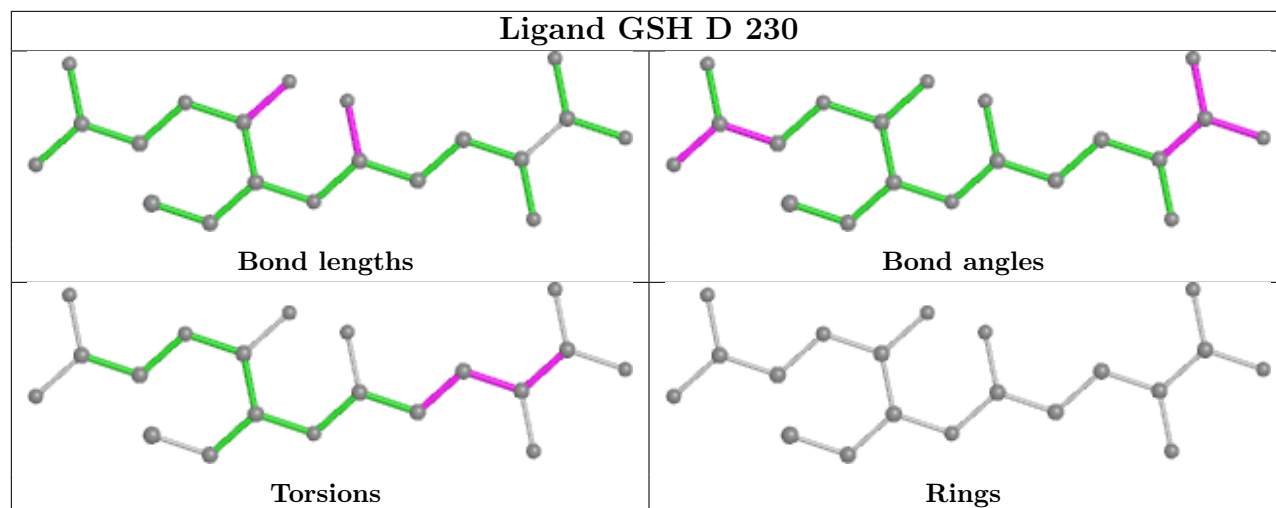
Mol	Chain	Res	Type	Atoms
2	G	230	GSH	O11-C1-CA1-N1
2	H	230	GSH	O11-C1-CA1-N1
2	A	230	GSH	O12-C1-CA1-CB1
2	G	230	GSH	N1-CA1-CB1-CG1
2	A	230	GSH	O11-C1-CA1-CB1
2	G	230	GSH	C2-CA2-CB2-SG2
2	B	230	GSH	O12-C1-CA1-N1
2	A	230	GSH	O2-C2-N3-CA3
2	B	230	GSH	O11-C1-CA1-N1
2	G	230	GSH	O12-C1-CA1-N1
2	F	230	GSH	C1-CA1-CB1-CG1
2	A	230	GSH	CA2-C2-N3-CA3

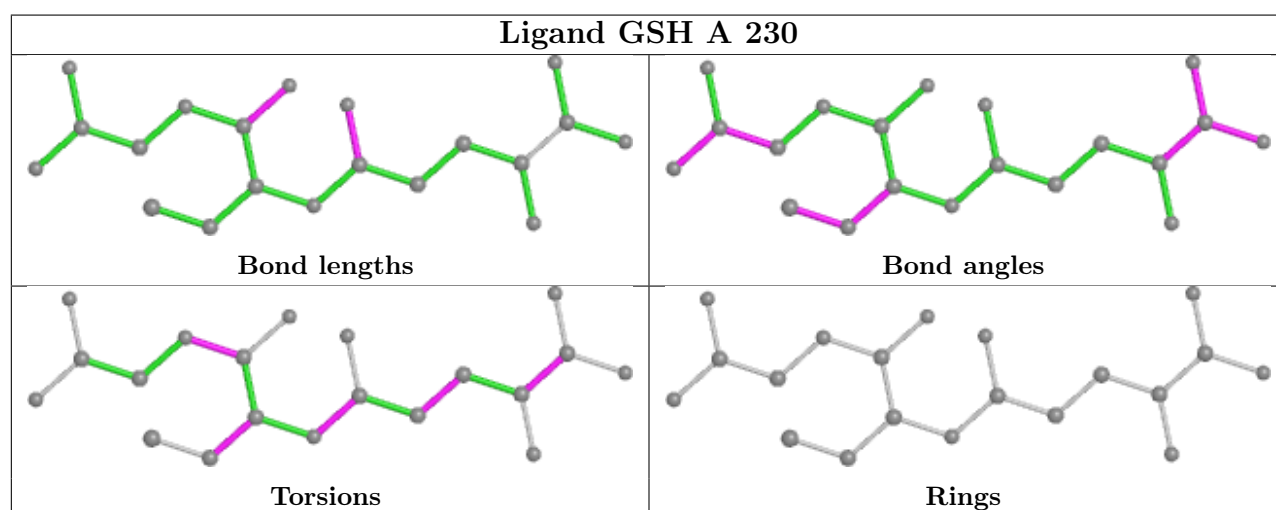
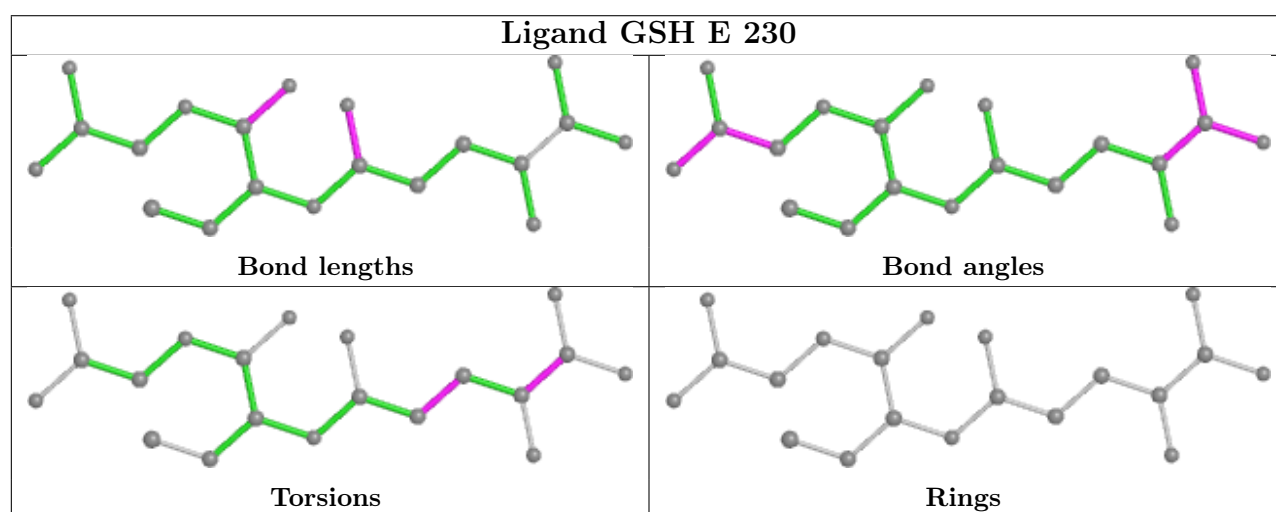
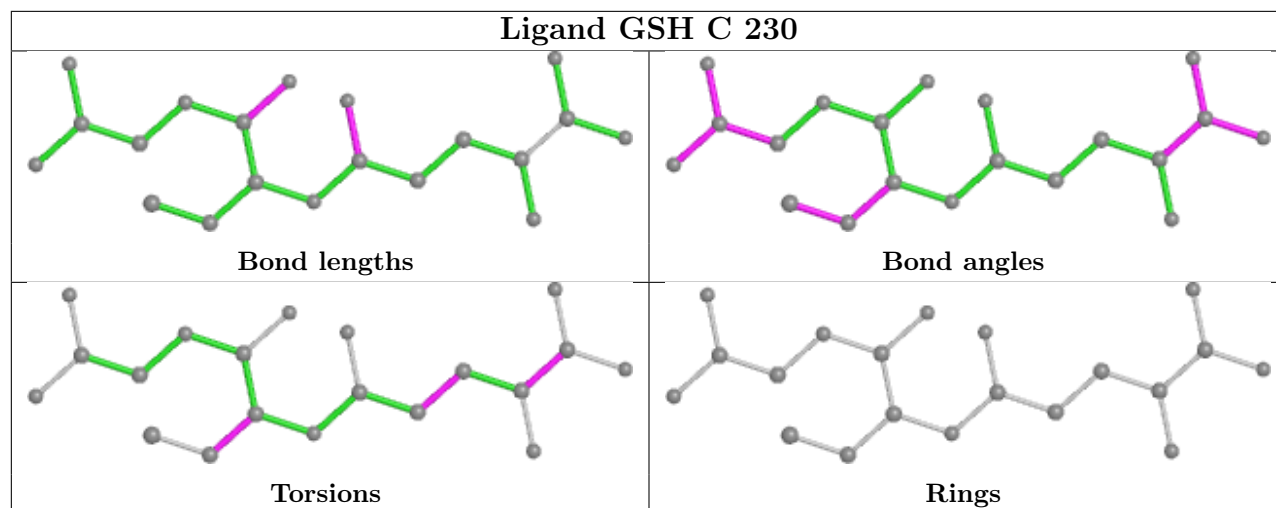
There are no ring outliers.

6 monomers are involved in 10 short contacts:

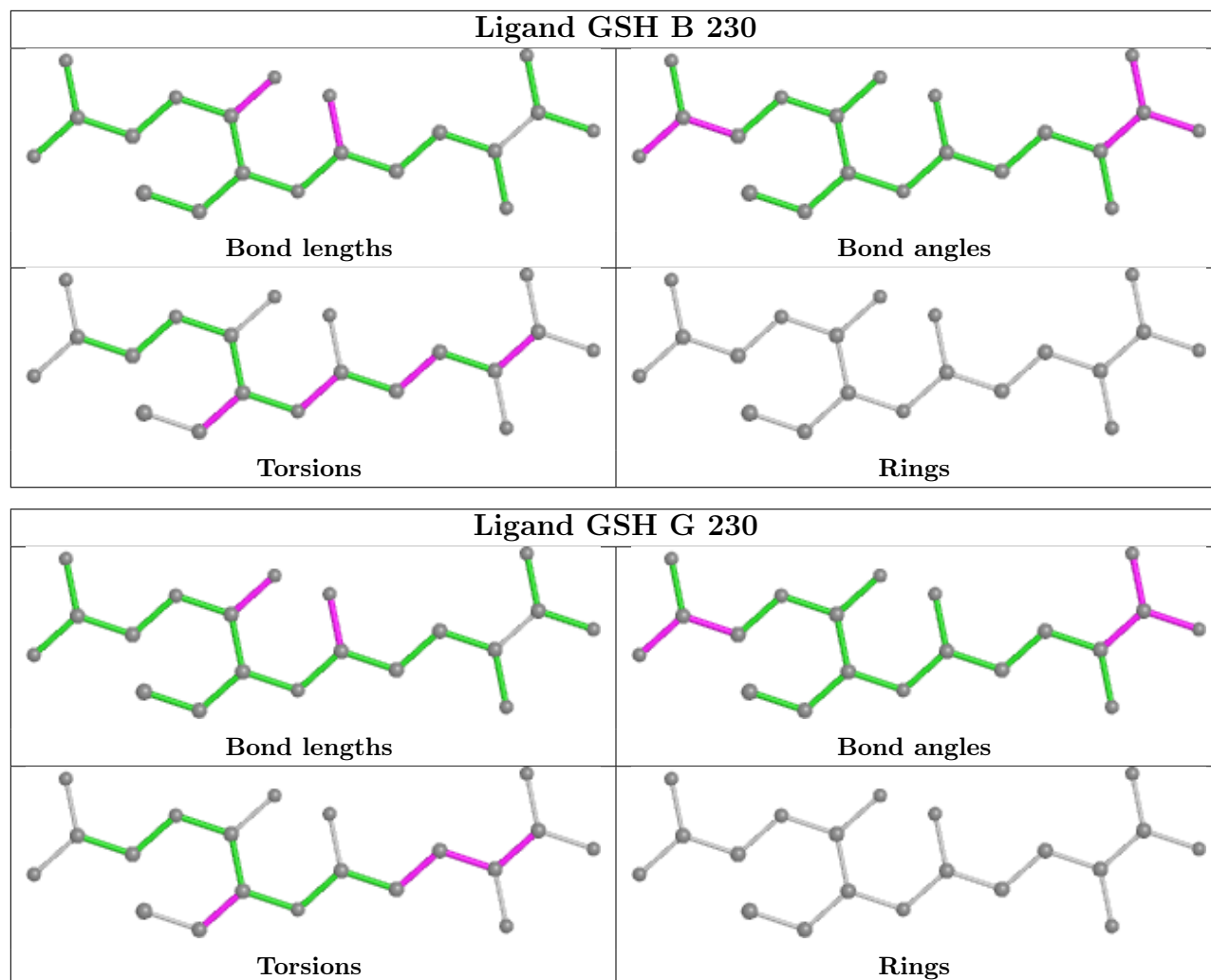
Mol	Chain	Res	Type	Clashes	Symm-Clashes
2	H	230	GSH	1	0
2	F	230	GSH	3	0
2	E	230	GSH	1	0
2	A	230	GSH	2	0
2	B	230	GSH	2	0
2	G	230	GSH	1	0

The following is a two-dimensional graphical depiction of Mogul quality analysis of bond lengths, bond angles, torsion angles, and ring geometry for all instances of the Ligand of Interest. In addition, ligands with molecular weight > 250 and outliers as shown on the validation Tables will also be included. For torsion angles, if less than 5% of the Mogul distribution of torsion angles is within 10 degrees of the torsion angle in question, then that torsion angle is considered an outlier. Any bond that is central to one or more torsion angles identified as an outlier by Mogul will be highlighted in the graph. For rings, the root-mean-square deviation (RMSD) between the ring in question and similar rings identified by Mogul is calculated over all ring torsion angles. If the average RMSD is greater than 60 degrees and the minimal RMSD between the ring in question and any Mogul-identified rings is also greater than 60 degrees, then that ring is considered an outlier. The outliers are highlighted in purple. The color gray indicates Mogul did not find sufficient equivalents in the CSD to analyse the geometry.









## 5.7 Other polymers [i](#)

There are no such residues in this entry.

## 5.8 Polymer linkage issues [i](#)

There are no chain breaks in this entry.

## 6 Fit of model and data

### 6.1 Protein, DNA and RNA chains

In the following table, the column labelled ‘#RSRZ > 2’ contains the number (and percentage) of RSRZ outliers, followed by percent RSRZ outliers for the chain as percentile scores relative to all X-ray entries and entries of similar resolution. The OWAB column contains the minimum, median, 95<sup>th</sup> percentile and maximum values of the occupancy-weighted average B-factor per residue. The column labelled ‘Q < 0.9’ lists the number of (and percentage) of residues with an average occupancy less than 0.9.

Mol	Chain	Analysed	<RSRZ>	#RSRZ>2	OWAB(Å <sup>2</sup> )	Q<0.9
1	A	221/222 (99%)	-0.00	5 (2%) 60 67	15, 27, 52, 63	0
1	B	221/222 (99%)	-0.12	2 (0%) 84 88	16, 28, 43, 50	0
1	C	221/222 (99%)	0.09	3 (1%) 75 80	24, 33, 48, 62	0
1	D	221/222 (99%)	0.11	3 (1%) 75 80	21, 35, 45, 54	0
1	E	221/222 (99%)	0.04	2 (0%) 84 88	23, 33, 49, 57	0
1	F	221/222 (99%)	0.44	11 (4%) 28 35	25, 41, 65, 71	0
1	G	221/222 (99%)	0.50	12 (5%) 25 32	30, 44, 61, 71	0
1	H	221/222 (99%)	0.51	9 (4%) 37 44	27, 47, 59, 64	0
All	All	1768/1776 (99%)	0.20	47 (2%) 54 62	15, 35, 58, 71	0

All (47) RSRZ outliers are listed below:

Mol	Chain	Res	Type	RSRZ
1	B	2	ALA	7.7
1	A	2	ALA	5.7
1	H	2	ALA	4.8
1	C	222	PHE	4.6
1	D	2	ALA	4.5
1	H	222	PHE	4.1
1	B	222	PHE	4.0
1	A	222	PHE	3.7
1	G	222	PHE	3.7
1	F	38	ALA	3.6
1	H	49	TYR	3.6
1	D	222	PHE	3.5
1	G	46	ASN	3.4
1	A	3	GLU	3.4
1	E	2	ALA	3.3
1	G	144	GLY	3.2

*Continued on next page...*

*Continued from previous page...*

Mol	Chain	Res	Type	RSRZ
1	G	49	TYR	3.2
1	A	119	ALA	3.2
1	G	221	ARG	3.1
1	F	222	PHE	2.9
1	G	86	ILE	2.9
1	G	219	ILE	2.7
1	F	213	LEU	2.7
1	C	2	ALA	2.5
1	F	37	SER	2.5
1	G	147	TYR	2.4
1	H	133	PHE	2.4
1	A	114	PRO	2.4
1	H	46	ASN	2.4
1	D	113	GLN	2.4
1	F	214	GLU	2.3
1	F	113	GLN	2.3
1	H	62	GLY	2.3
1	F	2	ALA	2.3
1	F	217	ARG	2.3
1	G	143	HIS	2.3
1	G	4	LYS	2.2
1	H	86	ILE	2.2
1	G	145	GLN	2.1
1	F	114	PRO	2.1
1	H	147	TYR	2.1
1	E	222	PHE	2.1
1	C	113	GLN	2.1
1	F	219	ILE	2.1
1	G	2	ALA	2.0
1	F	116	GLU	2.0
1	H	116	GLU	2.0

## 6.2 Non-standard residues in protein, DNA, RNA chains [i](#)

There are no non-standard protein/DNA/RNA residues in this entry.

## 6.3 Carbohydrates [i](#)

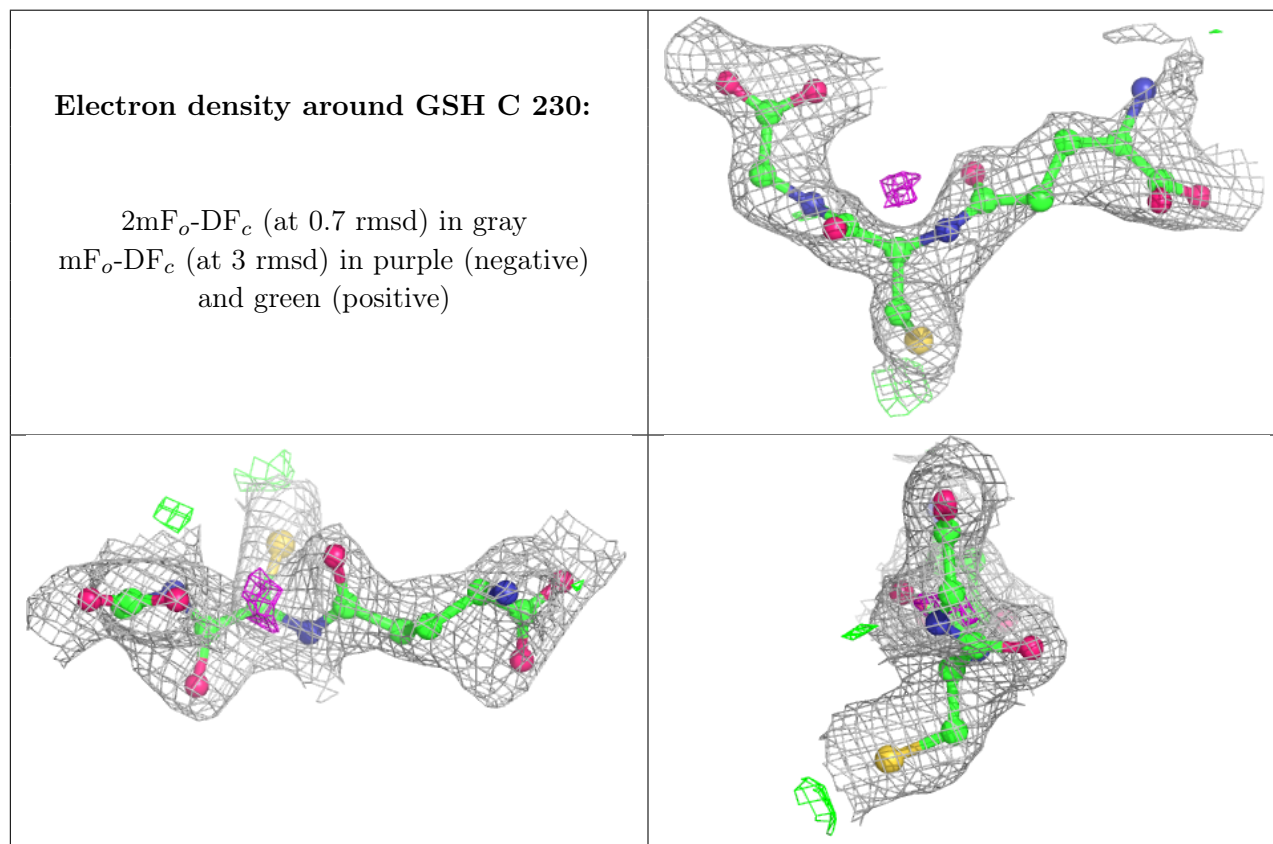
There are no monosaccharides in this entry.

## 6.4 Ligands [i](#)

In the following table, the Atoms column lists the number of modelled atoms in the group and the number defined in the chemical component dictionary. The B-factors column lists the minimum, median, 95<sup>th</sup> percentile and maximum values of B factors of atoms in the group. The column labelled 'Q<0.9' lists the number of atoms with occupancy less than 0.9.

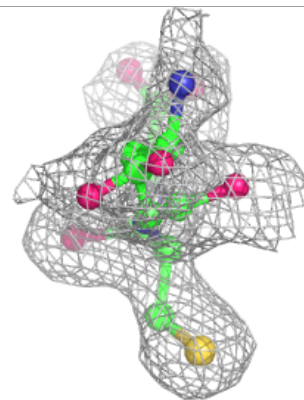
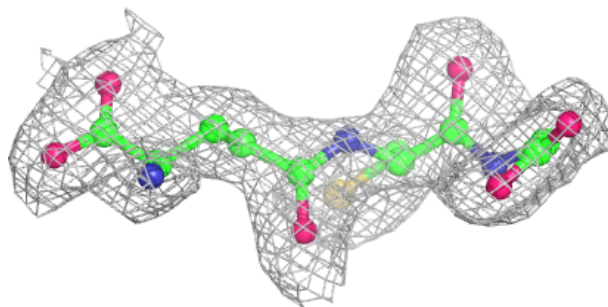
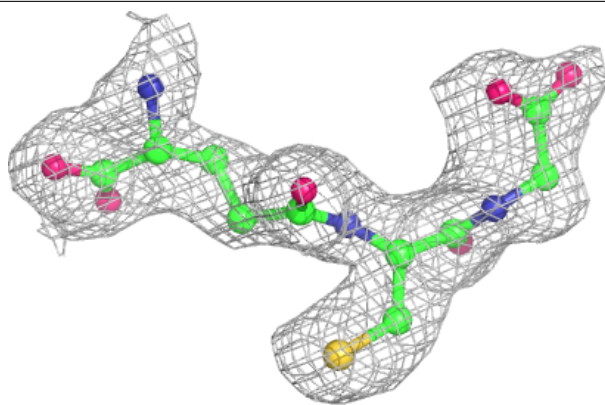
Mol	Type	Chain	Res	Atoms	RSCC	RSR	B-factors(Å <sup>2</sup> )	Q<0.9
2	GSH	C	230	20/20	0.74	0.21	55,57,58,59	0
2	GSH	F	230	20/20	0.78	0.20	41,45,49,50	0
2	GSH	G	230	20/20	0.80	0.22	62,63,64,65	0
2	GSH	E	230	20/20	0.85	0.17	34,41,45,45	0
2	GSH	A	230	20/20	0.86	0.15	51,53,54,56	0
2	GSH	H	230	20/20	0.86	0.17	51,55,57,59	0
2	GSH	B	230	20/20	0.90	0.21	28,32,38,44	0
2	GSH	D	230	20/20	0.91	0.17	35,38,41,43	0

The following is a graphical depiction of the model fit to experimental electron density of all instances of the Ligand of Interest. In addition, ligands with molecular weight > 250 and outliers as shown on the geometry validation Tables will also be included. Each fit is shown from different orientation to approximate a three-dimensional view.

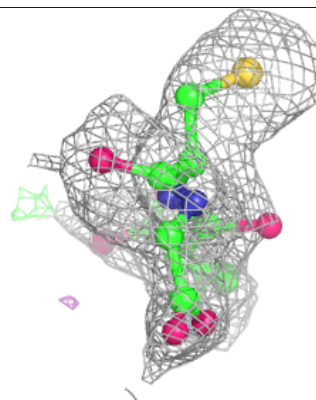
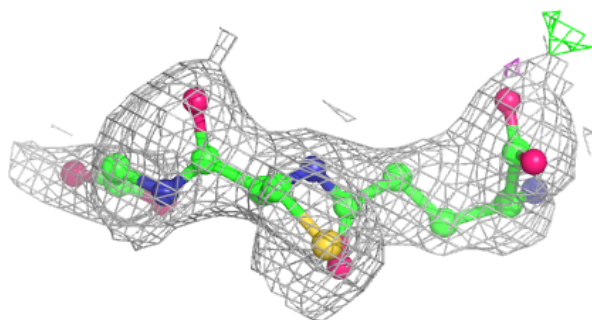
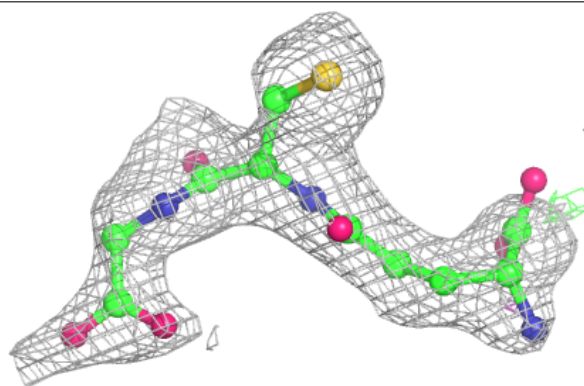


**Electron density around GSH F 230:**

$2mF_o-DF_c$  (at 0.7 rmsd) in gray  
 $mF_o-DF_c$  (at 3 rmsd) in purple (negative)  
and green (positive)

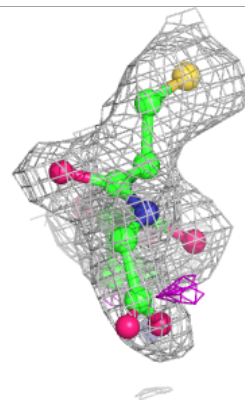
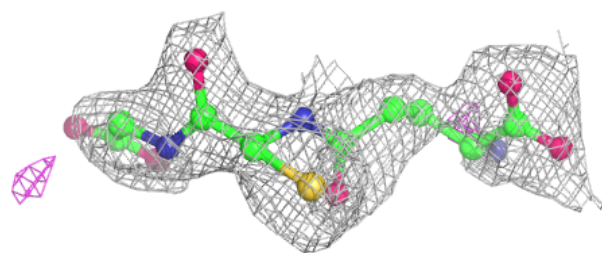
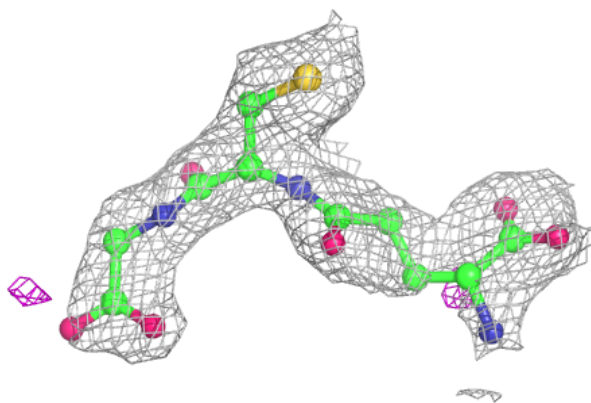
**Electron density around GSH G 230:**

$2mF_o-DF_c$  (at 0.7 rmsd) in gray  
 $mF_o-DF_c$  (at 3 rmsd) in purple (negative)  
and green (positive)

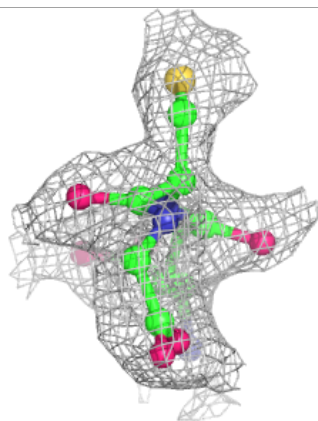
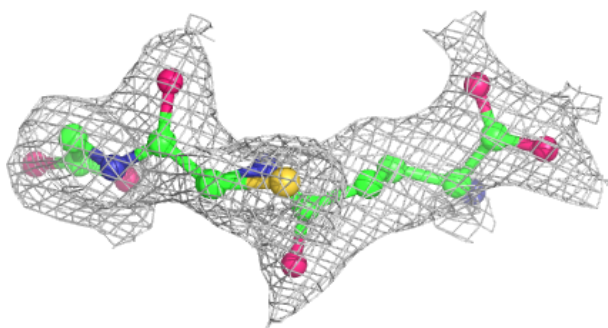
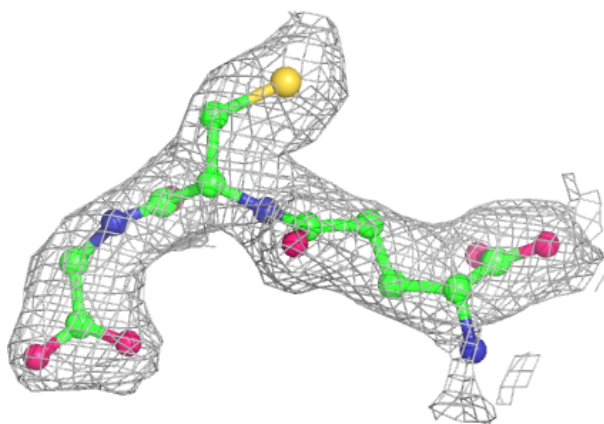


**Electron density around GSH E 230:**

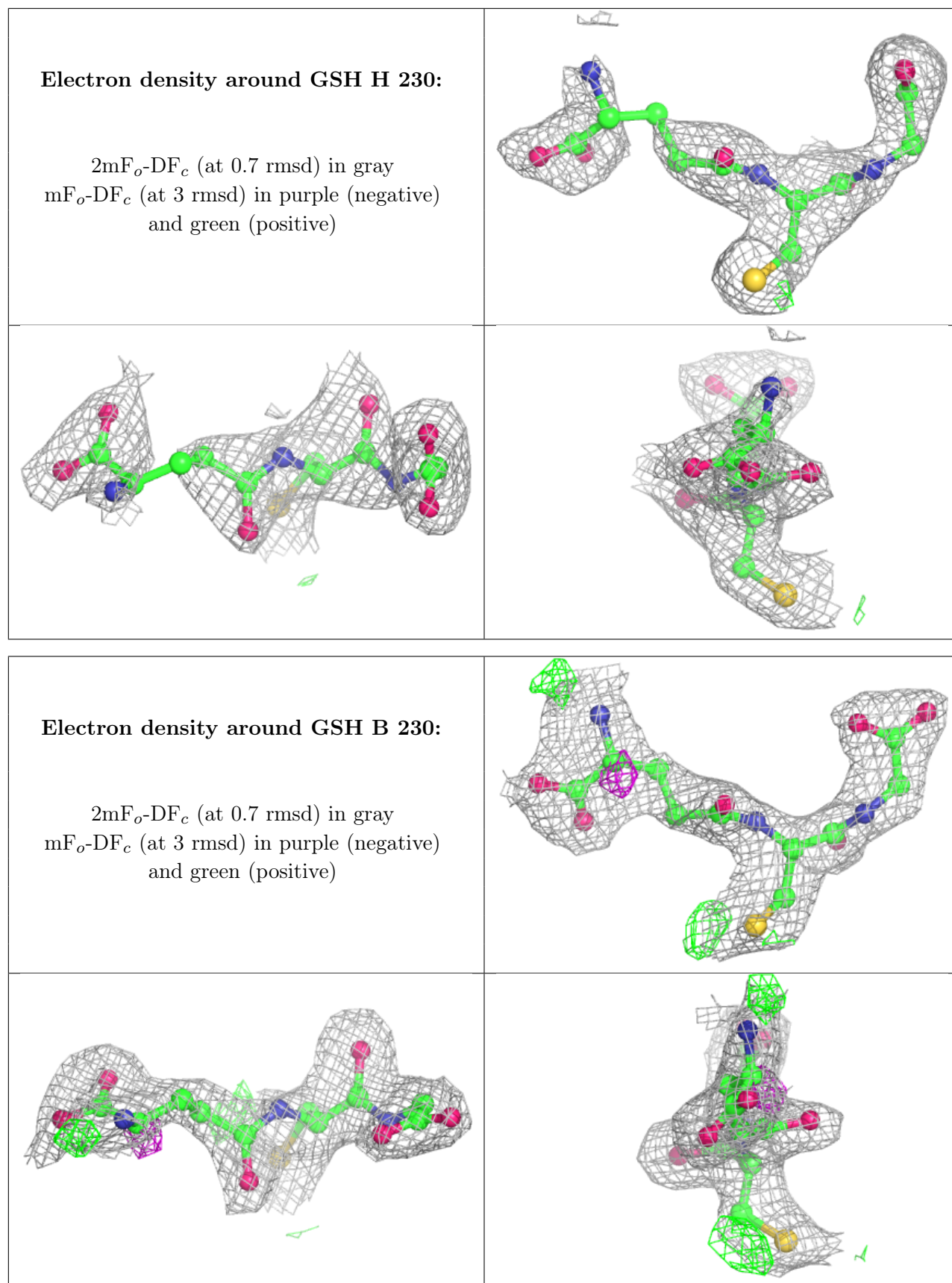
$2mF_o-DF_c$  (at 0.7 rmsd) in gray  
 $mF_o-DF_c$  (at 3 rmsd) in purple (negative)  
and green (positive)

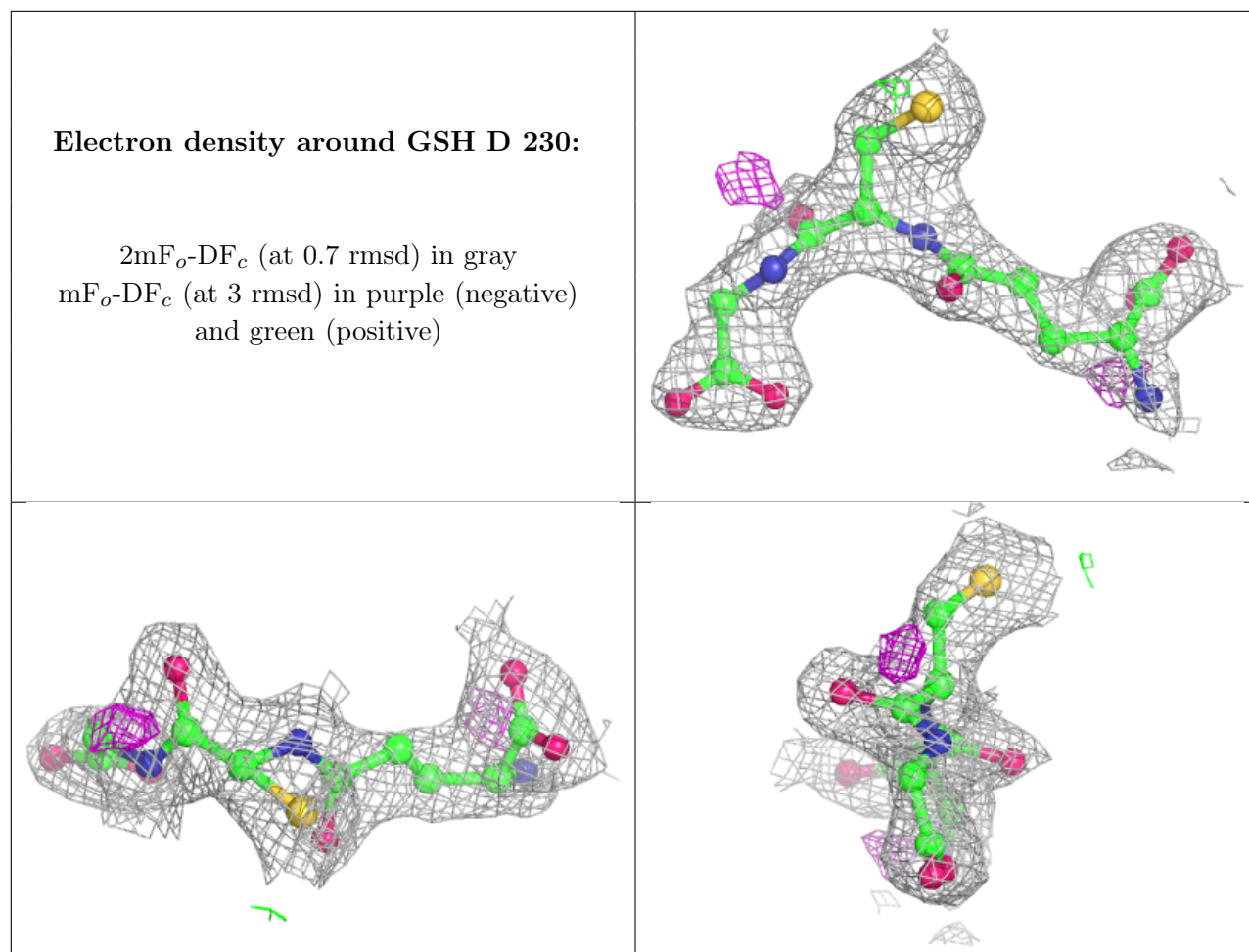
**Electron density around GSH A 230:**

$2mF_o-DF_c$  (at 0.7 rmsd) in gray  
 $mF_o-DF_c$  (at 3 rmsd) in purple (negative)  
and green (positive)









## 6.5 Other polymers [i](#)

There are no such residues in this entry.