



# Full wwPDB X-ray Structure Validation Report ⓘ

Jun 12, 2024 – 01:51 PM EDT

PDB ID : 3WNL  
Title : D308A mutant of Bacillus circulans T-3040 cycloisomaltooligosaccharide glucanotransferase complexed with isomaltohexaose  
Authors : Suzuki, N.; Fujimoto, Z.; Kim, Y.M.; Momma, M.; Kishine, N.; Suzuki, R.; Suzuki, S.; Kitamura, S.; Kobayashi, M.; Kimura, A.; Funane, K.  
Deposited on : 2013-12-10  
Resolution : 2.60 Å(reported)

This is a Full wwPDB X-ray Structure Validation Report for a publicly released PDB entry.

We welcome your comments at [validation@mail.wwpdb.org](mailto:validation@mail.wwpdb.org)

A user guide is available at

<https://www.wwpdb.org/validation/2017/XrayValidationReportHelp>

with specific help available everywhere you see the ⓘ symbol.

The types of validation reports are described at

<http://www.wwpdb.org/validation/2017/FAQs#types>.

---

The following versions of software and data (see [references ⓘ](#)) were used in the production of this report:

MolProbity : 4.02b-467  
Mogul : 2022.3.0, CSD as543be (2022)  
Xtriage (Phenix) : 1.20.1  
EDS : 2.36.2  
Percentile statistics : 20191225.v01 (using entries in the PDB archive December 25th 2019)  
Refmac : 5.8.0158  
CCP4 : 7.0.044 (Gargrove)  
Ideal geometry (proteins) : Engh & Huber (2001)  
Ideal geometry (DNA, RNA) : Parkinson et al. (1996)  
Validation Pipeline (wwPDB-VP) : 2.36.2

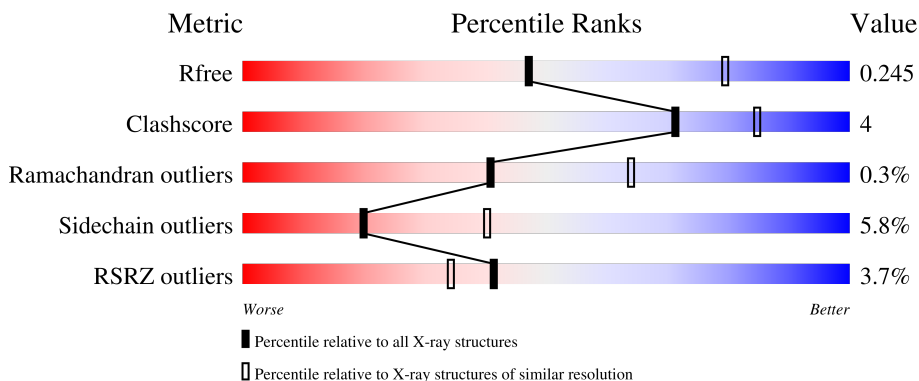
# 1 Overall quality at a glance i

The following experimental techniques were used to determine the structure:

*X-RAY DIFFRACTION*

The reported resolution of this entry is 2.60 Å.

Percentile scores (ranging between 0-100) for global validation metrics of the entry are shown in the following graphic. The table shows the number of entries on which the scores are based.



Metric	Whole archive (#Entries)	Similar resolution (#Entries, resolution range(Å))
$R_{free}$	130704	3163 (2.60-2.60)
Clashscore	141614	3518 (2.60-2.60)
Ramachandran outliers	138981	3455 (2.60-2.60)
Sidechain outliers	138945	3455 (2.60-2.60)
RSRZ outliers	127900	3104 (2.60-2.60)

The table below summarises the geometric issues observed across the polymeric chains and their fit to the electron density. The red, orange, yellow and green segments of the lower bar indicate the fraction of residues that contain outliers for  $\geq 3$ , 2, 1 and 0 types of geometric quality criteria respectively. A grey segment represents the fraction of residues that are not modelled. The numeric value for each fraction is indicated below the corresponding segment, with a dot representing fractions  $\leq 5\%$ . The upper red bar (where present) indicates the fraction of residues that have poor fit to the electron density. The numeric value is given above the bar.

Mol	Chain	Length	Quality of chain
1	A	710	<div style="display: flex; align-items: center;"> <div style="width: 4%; height: 10px; background-color: red; margin-right: 5px;"></div> <div style="width: 85%; height: 10px; background-color: green; margin-right: 5px;"></div> <div style="width: 13%; height: 10px; background-color: yellow; margin-right: 5px;"></div> <div style="width: 2%; height: 10px; background-color: grey; margin-right: 5px;"></div> <div style="width: 2%; height: 10px; background-color: grey;"></div> </div> <p style="margin-left: 40px;">4%      85%      13%      ..</p>
2	B	4	<div style="width: 100%; height: 10px; background-color: yellow;"></div> <p style="margin-left: 40px;">100%</p>
3	C	4	<div style="width: 100%; height: 10px; background-color: yellow;"></div> <p style="margin-left: 40px;">100%</p>

## 2 Entry composition i

There are 8 unique types of molecules in this entry. The entry contains 5710 atoms, of which 0 are hydrogens and 0 are deuteriums.

In the tables below, the ZeroOcc column contains the number of atoms modelled with zero occupancy, the AltConf column contains the number of residues with at least one atom in alternate conformation and the Trace column contains the number of residues modelled with at most 2 atoms.

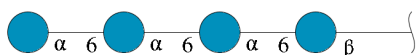
- Molecule 1 is a protein called Cycloisomaltooligosaccharide glucanotransferase.

Mol	Chain	Residues	Atoms					ZeroOcc	AltConf	Trace
			Total	C	N	O	S			
1	A	701	5517	3466	927	1109	15	0	0	0

There are 12 discrepancies between the modelled and reference sequences:

Chain	Residue	Modelled	Actual	Comment	Reference
A	37	MET	-	expression tag	UNP P94286
A	38	GLY	-	expression tag	UNP P94286
A	278	PHE	SER	SEE REMARK 999	UNP P94286
A	308	ALA	ASP	engineered mutation	UNP P94286
A	739	LEU	-	expression tag	UNP P94286
A	740	GLU	-	expression tag	UNP P94286
A	741	HIS	-	expression tag	UNP P94286
A	742	HIS	-	expression tag	UNP P94286
A	743	HIS	-	expression tag	UNP P94286
A	744	HIS	-	expression tag	UNP P94286
A	745	HIS	-	expression tag	UNP P94286
A	746	HIS	-	expression tag	UNP P94286

- Molecule 2 is an oligosaccharide called alpha-D-glucopyranose-(1-6)-alpha-D-glucopyranose-(1-6)-alpha-D-glucopyranose-(1-6)-beta-D-glucopyranose.



Mol	Chain	Residues	Atoms			ZeroOcc	AltConf	Trace
			Total	C	O			
2	B	4	45	24	21	0	0	0

- Molecule 3 is an oligosaccharide called alpha-D-glucopyranose-(1-6)-alpha-D-glucopyranose-(1-6)-alpha-D-glucopyranose-(1-6)-alpha-D-glucopyranose.



Mol	Chain	Residues	Atoms			ZeroOcc	AltConf	Trace
3	C	4	Total	C	O	0	0	0
			45	24	21			

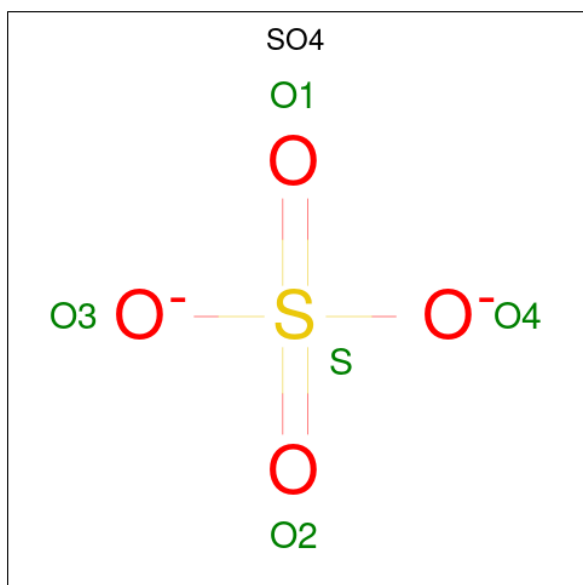
- Molecule 4 is CALCIUM ION (three-letter code: CA) (formula: Ca).

Mol	Chain	Residues	Atoms		ZeroOcc	AltConf
4	A	1	Total	Ca	0	0
			1	1		

- Molecule 5 is SODIUM ION (three-letter code: NA) (formula: Na).

Mol	Chain	Residues	Atoms		ZeroOcc	AltConf
5	A	1	Total	Na	0	0
			1	1		

- Molecule 6 is SULFATE ION (three-letter code: SO4) (formula: O<sub>4</sub>S).



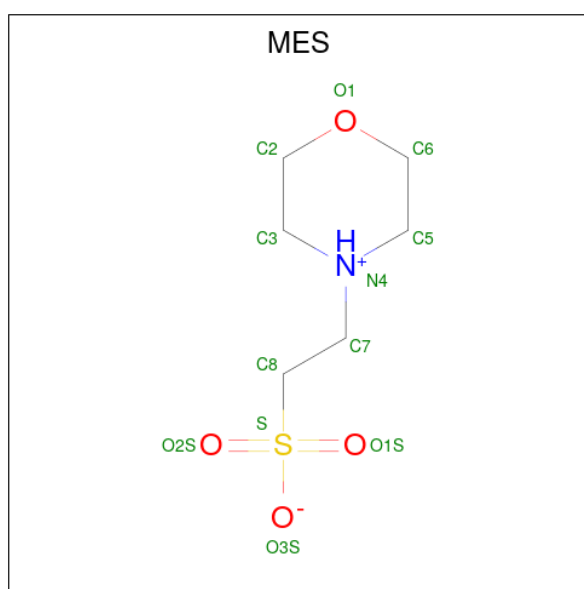
Mol	Chain	Residues	Atoms			ZeroOcc	AltConf
6	A	1	Total	O	S	0	0
			5	4	1		
6	A	1	Total	O	S	0	0
			5	4	1		

*Continued on next page...*

Continued from previous page...

Mol	Chain	Residues	Atoms			ZeroOcc	AltConf
6	A	1	Total	O	S	0	0
			5	4	1		
6	A	1	Total	O	S	0	0
			5	4	1		
6	A	1	Total	O	S	0	0
			5	4	1		
6	A	1	Total	O	S	0	0
			5	4	1		
6	A	1	Total	O	S	0	0
			5	4	1		

- Molecule 7 is 2-(N-MORPHOLINO)-ETHANESULFONIC ACID (three-letter code: MES) (formula: C<sub>6</sub>H<sub>13</sub>NO<sub>4</sub>S).



Mol	Chain	Residues	Atoms					ZeroOcc	AltConf
7	A	1	Total	C	N	O	S	0	0
			12	6	1	4	1		

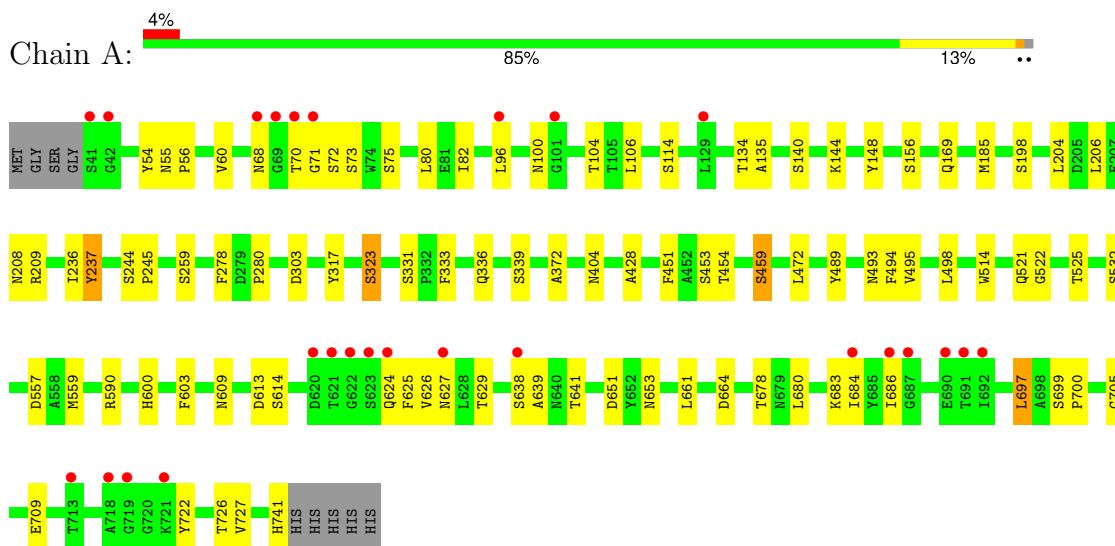
- Molecule 8 is water.

Mol	Chain	Residues	Atoms		ZeroOcc	AltConf
8	A	49	Total	O	0	0
			49	49		

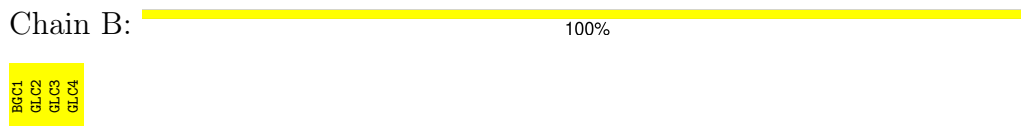
### 3 Residue-property plots [i](#)

These plots are drawn for all protein, RNA, DNA and oligosaccharide chains in the entry. The first graphic for a chain summarises the proportions of the various outlier classes displayed in the second graphic. The second graphic shows the sequence view annotated by issues in geometry and electron density. Residues are color-coded according to the number of geometric quality criteria for which they contain at least one outlier: green = 0, yellow = 1, orange = 2 and red = 3 or more. A red dot above a residue indicates a poor fit to the electron density ( $RSRZ > 2$ ). Stretches of 2 or more consecutive residues without any outlier are shown as a green connector. Residues present in the sample, but not in the model, are shown in grey.

- Molecule 1: Cycloisomaltooligosaccharide glucanotransferase



- Molecule 2: alpha-D-glucopyranose-(1-6)-alpha-D-glucopyranose-(1-6)-alpha-D-glucopyranose-(1-6)-beta-D-glucopyranose



- Molecule 3: alpha-D-glucopyranose-(1-6)-alpha-D-glucopyranose-(1-6)-alpha-D-glucopyranose-(1-6)-alpha-D-glucopyranose



## 4 Data and refinement statistics

Property	Value	Source
Space group	P 41 21 2	Depositor
Cell constants a, b, c, $\alpha$ , $\beta$ , $\gamma$	172.11Å 172.11Å 60.93Å 90.00° 90.00° 90.00°	Depositor
Resolution (Å)	47.78 – 2.60 47.73 – 2.60	Depositor EDS
% Data completeness (in resolution range)	99.5 (47.78-2.60) 99.6 (47.73-2.60)	Depositor EDS
$R_{merge}$	(Not available)	Depositor
$R_{sym}$	0.12	Depositor
$\langle I/\sigma(I) \rangle$ <sup>1</sup>	3.97 (at 2.61Å)	Xtrriage
Refinement program	REFMAC 5.7.0029	Depositor
R, $R_{free}$	0.187 , 0.247 0.189 , 0.245	Depositor DCC
$R_{free}$ test set	1452 reflections (5.07%)	wwPDB-VP
Wilson B-factor (Å <sup>2</sup> )	61.3	Xtrriage
Anisotropy	0.217	Xtrriage
Bulk solvent $k_{sol}$ (e/Å <sup>3</sup> ), $B_{sol}$ (Å <sup>2</sup> )	0.33 , 37.2	EDS
L-test for twinning <sup>2</sup>	$\langle  L  \rangle = 0.49$ , $\langle L^2 \rangle = 0.32$	Xtrriage
Estimated twinning fraction	No twinning to report.	Xtrriage
$F_o, F_c$ correlation	0.96	EDS
Total number of atoms	5710	wwPDB-VP
Average B, all atoms (Å <sup>2</sup> )	70.0	wwPDB-VP

Xtrriage's analysis on translational NCS is as follows: *The largest off-origin peak in the Patterson function is 3.19% of the height of the origin peak. No significant pseudotranslation is detected.*

<sup>1</sup>Intensities estimated from amplitudes.

<sup>2</sup>Theoretical values of  $\langle |L| \rangle$ ,  $\langle L^2 \rangle$  for acentric reflections are 0.5, 0.333 respectively for untwinned datasets, and 0.375, 0.2 for perfectly twinned datasets.

## 5 Model quality [i](#)

### 5.1 Standard geometry [i](#)

Bond lengths and bond angles in the following residue types are not validated in this section: NA, GLC, BGC, CA, SO4, MES

The Z score for a bond length (or angle) is the number of standard deviations the observed value is removed from the expected value. A bond length (or angle) with  $|Z| > 5$  is considered an outlier worth inspection. RMSZ is the root-mean-square of all Z scores of the bond lengths (or angles).

Mol	Chain	Bond lengths		Bond angles	
		RMSZ	# Z  >5	RMSZ	# Z  >5
1	A	0.74	0/5658	0.85	2/7706 (0.0%)

There are no bond length outliers.

All (2) bond angle outliers are listed below:

Mol	Chain	Res	Type	Atoms	Z	Observed(°)	Ideal(°)
1	A	664	ASP	CB-CG-OD1	5.83	123.55	118.30
1	A	303	ASP	CB-CG-OD1	-5.67	113.20	118.30

There are no chirality outliers.

There are no planarity outliers.

### 5.2 Too-close contacts [i](#)

In the following table, the Non-H and H(model) columns list the number of non-hydrogen atoms and hydrogen atoms in the chain respectively. The H(added) column lists the number of hydrogen atoms added and optimized by MolProbity. The Clashes column lists the number of clashes within the asymmetric unit, whereas Symm-Clashes lists symmetry-related clashes.

Mol	Chain	Non-H	H(model)	H(added)	Clashes	Symm-Clashes
1	A	5517	0	5118	38	0
2	B	45	0	39	0	0
3	C	45	0	39	0	0
4	A	1	0	0	0	0
5	A	1	0	0	0	0
6	A	40	0	0	1	0
7	A	12	0	13	0	0
8	A	49	0	0	0	0
All	All	5710	0	5209	38	0



The all-atom clashscore is defined as the number of clashes found per 1000 atoms (including hydrogen atoms). The all-atom clashscore for this structure is 4.

All (38) close contacts within the same asymmetric unit are listed below, sorted by their clash magnitude.

Atom-1	Atom-2	Interatomic distance (Å)	Clash overlap (Å)
1:A:68:ASN:ND2	1:A:72:SER:O	2.15	0.79
1:A:639:ALA:O	1:A:641:THR:HG23	1.88	0.74
1:A:557:ASP:HB3	1:A:600:HIS:CE1	2.41	0.56
1:A:71:GLY:HA2	1:A:100:ASN:ND2	2.21	0.55
1:A:609:ASN:O	1:A:613:ASP:HB2	2.06	0.55
1:A:80:LEU:HD21	1:A:82:ILE:HD11	1.88	0.54
1:A:428:ALA:HB1	1:A:459:SER:O	2.08	0.54
1:A:626:VAL:HG13	1:A:684:ILE:HD13	1.90	0.54
1:A:472:LEU:O	1:A:514:TRP:HA	2.09	0.53
1:A:169:GLN:NE2	6:A:808:SO4:O3	2.41	0.52
1:A:206:LEU:HD23	1:A:206:LEU:H	1.74	0.52
1:A:404:ASN:ND2	1:A:614:SER:O	2.35	0.52
1:A:278:PHE:O	1:A:280:PRO:HD3	2.11	0.51
1:A:54:TYR:CZ	1:A:60:VAL:HG13	2.46	0.51
1:A:56:PRO:HB3	1:A:114:SER:HA	1.95	0.48
1:A:96:LEU:HD13	1:A:106:LEU:HD21	1.95	0.48
1:A:680:LEU:O	1:A:727:VAL:N	2.43	0.47
1:A:55:ASN:OD1	1:A:140:SER:HA	2.14	0.47
1:A:641:THR:CA	1:A:661:LEU:HD23	2.45	0.47
1:A:489:TYR:HA	1:A:493:ASN:O	2.16	0.46
1:A:236:ILE:HG13	1:A:333:PHE:CE1	2.51	0.45
1:A:590:ARG:NE	1:A:590:ARG:HA	2.31	0.45
1:A:206:LEU:HD23	1:A:206:LEU:N	2.31	0.45
1:A:697:LEU:HD23	1:A:697:LEU:O	2.17	0.45
1:A:134:THR:OG1	1:A:135:ALA:N	2.48	0.45
1:A:603:PHE:CD1	1:A:700:PRO:HD3	2.52	0.44
1:A:236:ILE:HG23	1:A:237:TYR:CG	2.52	0.44
1:A:641:THR:HA	1:A:661:LEU:HD23	2.00	0.44
1:A:697:LEU:HD23	1:A:697:LEU:C	2.39	0.43
1:A:627:ASN:HB2	1:A:683:LYS:HG3	1.99	0.43
1:A:317:TYR:CE2	1:A:323:SER:HB2	2.54	0.43
1:A:489:TYR:CE2	1:A:494:PHE:HB2	2.53	0.43
1:A:521:GLN:HG3	1:A:522:GLY:N	2.33	0.43
1:A:244:SER:N	1:A:245:PRO:CD	2.83	0.42
1:A:699:SER:O	1:A:705:GLY:HA2	2.19	0.42
1:A:336:GLN:HA	1:A:336:GLN:OE1	2.19	0.42
1:A:331:SER:HB3	1:A:372:ALA:HB2	2.01	0.41

*Continued on next page...*

*Continued from previous page...*

Atom-1	Atom-2	Interatomic distance (Å)	Clash overlap (Å)
1:A:204:LEU:HA	1:A:209:ARG:O	2.21	0.41

There are no symmetry-related clashes.

## 5.3 Torsion angles [i](#)

### 5.3.1 Protein backbone [i](#)

In the following table, the Percentiles column shows the percent Ramachandran outliers of the chain as a percentile score with respect to all X-ray entries followed by that with respect to entries of similar resolution.

The Analysed column shows the number of residues for which the backbone conformation was analysed, and the total number of residues.

Mol	Chain	Analysed	Favoured	Allowed	Outliers	Percentiles
1	A	699/710 (98%)	647 (93%)	50 (7%)	2 (0%)	41 64

All (2) Ramachandran outliers are listed below:

Mol	Chain	Res	Type
1	A	686	ILE
1	A	70	THR

### 5.3.2 Protein sidechains [i](#)

In the following table, the Percentiles column shows the percent sidechain outliers of the chain as a percentile score with respect to all X-ray entries followed by that with respect to entries of similar resolution.

The Analysed column shows the number of residues for which the sidechain conformation was analysed, and the total number of residues.

Mol	Chain	Analysed	Rotameric	Outliers	Percentiles
1	A	589/596 (99%)	555 (94%)	34 (6%)	20 40

All (34) residues with a non-rotameric sidechain are listed below:

Mol	Chain	Res	Type
1	A	73	SER

*Continued on next page...*

*Continued from previous page...*

<b>Mol</b>	<b>Chain</b>	<b>Res</b>	<b>Type</b>
1	A	75	SER
1	A	104	THR
1	A	144	LYS
1	A	148	TYR
1	A	156	SER
1	A	185	MET
1	A	198	SER
1	A	208	ASN
1	A	237	TYR
1	A	259	SER
1	A	323	SER
1	A	339	SER
1	A	451	PHE
1	A	453	SER
1	A	454	THR
1	A	459	SER
1	A	495	VAL
1	A	498	LEU
1	A	525	THR
1	A	532	SER
1	A	559	MET
1	A	624	GLN
1	A	625	PHE
1	A	629	THR
1	A	638	SER
1	A	651	ASP
1	A	653	ASN
1	A	678	THR
1	A	697	LEU
1	A	709	GLU
1	A	722	TYR
1	A	726	THR
1	A	741	HIS

Sometimes sidechains can be flipped to improve hydrogen bonding and reduce clashes. All (10) such sidechains are listed below:

<b>Mol</b>	<b>Chain</b>	<b>Res</b>	<b>Type</b>
1	A	100	ASN
1	A	227	ASN
1	A	315	ASN
1	A	479	ASN
1	A	496	GLN

*Continued on next page...*

*Continued from previous page...*

Mol	Chain	Res	Type
1	A	521	GLN
1	A	600	HIS
1	A	646	ASN
1	A	653	ASN
1	A	679	ASN

### 5.3.3 RNA [i](#)

There are no RNA molecules in this entry.

### 5.4 Non-standard residues in protein, DNA, RNA chains [i](#)

There are no non-standard protein/DNA/RNA residues in this entry.

### 5.5 Carbohydrates [i](#)

8 monosaccharides are modelled in this entry.

In the following table, the Counts columns list the number of bonds (or angles) for which Mogul statistics could be retrieved, the number of bonds (or angles) that are observed in the model and the number of bonds (or angles) that are defined in the Chemical Component Dictionary. The Link column lists molecule types, if any, to which the group is linked. The Z score for a bond length (or angle) is the number of standard deviations the observed value is removed from the expected value. A bond length (or angle) with  $|Z| > 2$  is considered an outlier worth inspection. RMSZ is the root-mean-square of all Z scores of the bond lengths (or angles).

Mol	Type	Chain	Res	Link	Bond lengths			Bond angles		
					Counts	RMSZ	$\# Z  > 2$	Counts	RMSZ	$\# Z  > 2$
2	BGC	B	1	2	12,12,12	0.73	0	17,17,17	1.19	1 (5%)
2	GLC	B	2	2	11,11,12	0.88	0	15,15,17	0.99	1 (6%)
2	GLC	B	3	2	11,11,12	0.67	0	15,15,17	1.63	2 (13%)
2	GLC	B	4	2	11,11,12	1.06	1 (9%)	15,15,17	1.58	4 (26%)
3	GLC	C	1	3	12,12,12	0.56	0	17,17,17	1.53	3 (17%)
3	GLC	C	2	3	11,11,12	0.66	0	15,15,17	1.58	3 (20%)
3	GLC	C	3	3	11,11,12	0.63	0	15,15,17	1.06	1 (6%)
3	GLC	C	4	3	11,11,12	0.60	0	15,15,17	1.29	3 (20%)

In the following table, the Chirals column lists the number of chiral outliers, the number of chiral centers analysed, the number of these observed in the model and the number defined in the Chemical Component Dictionary. Similar counts are reported in the Torsion and Rings columns.

'-' means no outliers of that kind were identified.

Mol	Type	Chain	Res	Link	Chirals	Torsions	Rings
2	BGC	B	1	2	-	0/2/22/22	0/1/1/1
2	GLC	B	2	2	-	0/2/19/22	0/1/1/1
2	GLC	B	3	2	-	0/2/19/22	0/1/1/1
2	GLC	B	4	2	-	1/2/19/22	0/1/1/1
3	GLC	C	1	3	-	0/2/22/22	0/1/1/1
3	GLC	C	2	3	-	0/2/19/22	0/1/1/1
3	GLC	C	3	3	-	2/2/19/22	0/1/1/1
3	GLC	C	4	3	-	0/2/19/22	0/1/1/1

All (1) bond length outliers are listed below:

Mol	Chain	Res	Type	Atoms	Z	Observed(Å)	Ideal(Å)
2	B	4	GLC	C4-C5	2.15	1.57	1.53

All (18) bond angle outliers are listed below:

Mol	Chain	Res	Type	Atoms	Z	Observed(°)	Ideal(°)
3	C	1	GLC	O5-C5-C4	4.09	117.07	109.70
2	B	3	GLC	O3-C3-C2	-4.09	101.71	110.05
3	C	2	GLC	C1-C2-C3	3.44	114.66	109.64
3	C	2	GLC	C1-O5-C5	3.41	116.76	112.19
2	B	3	GLC	O5-C5-C6	3.35	114.19	107.66
3	C	1	GLC	C1-O5-C5	3.28	120.00	113.65
2	B	4	GLC	C1-O5-C5	3.08	116.31	112.19
3	C	2	GLC	O6-C6-C5	-2.67	102.24	111.33
2	B	4	GLC	C3-C4-C5	2.57	114.89	110.23
3	C	1	GLC	C3-C4-C5	2.53	114.81	110.23
2	B	1	BGC	O5-C1-C2	-2.52	105.87	110.30
3	C	3	GLC	C1-C2-C3	2.41	113.15	109.64
3	C	4	GLC	C3-C4-C5	2.36	114.50	110.23
2	B	2	GLC	O5-C5-C6	-2.28	103.23	107.66
3	C	4	GLC	C2-C3-C4	2.23	114.79	110.86
2	B	4	GLC	O4-C4-C5	2.19	114.73	109.32
3	C	4	GLC	C1-O5-C5	2.16	115.08	112.19
2	B	4	GLC	O6-C6-C5	2.09	118.45	111.33

There are no chirality outliers.

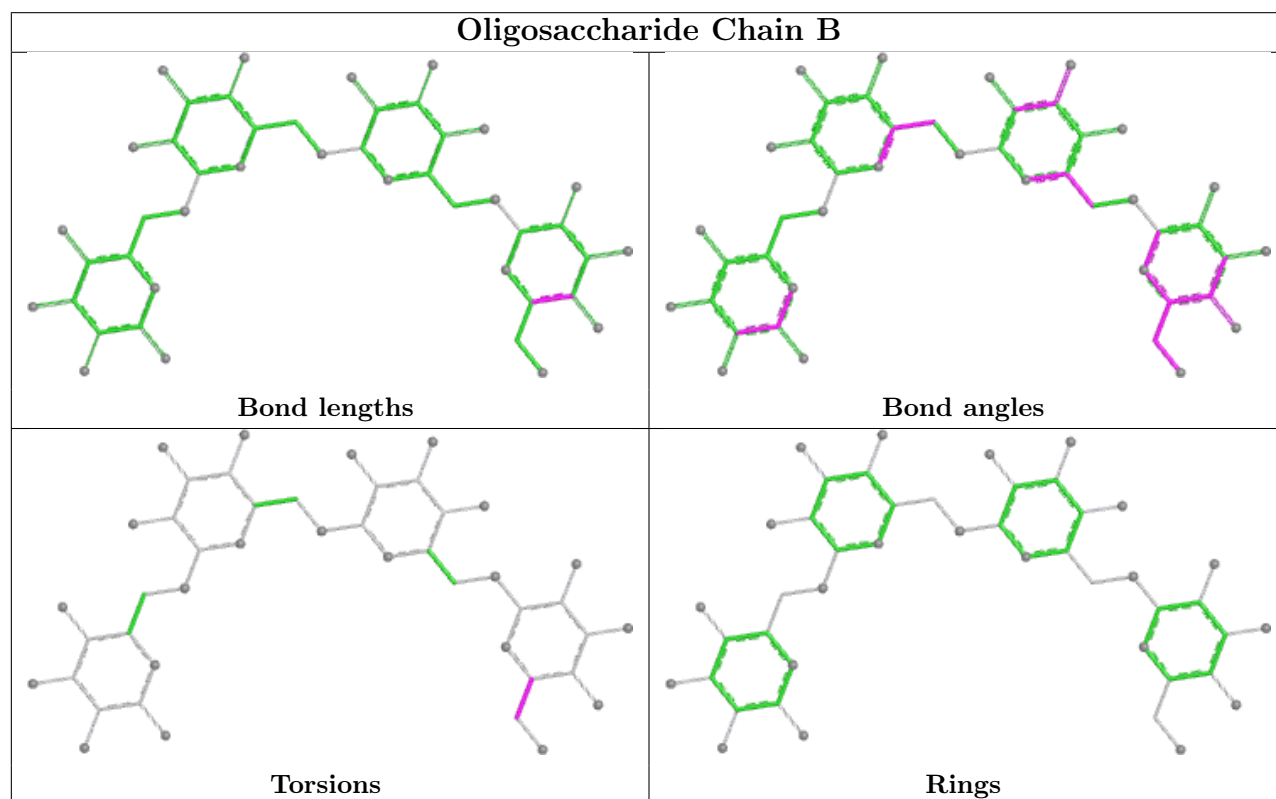
All (3) torsion outliers are listed below:

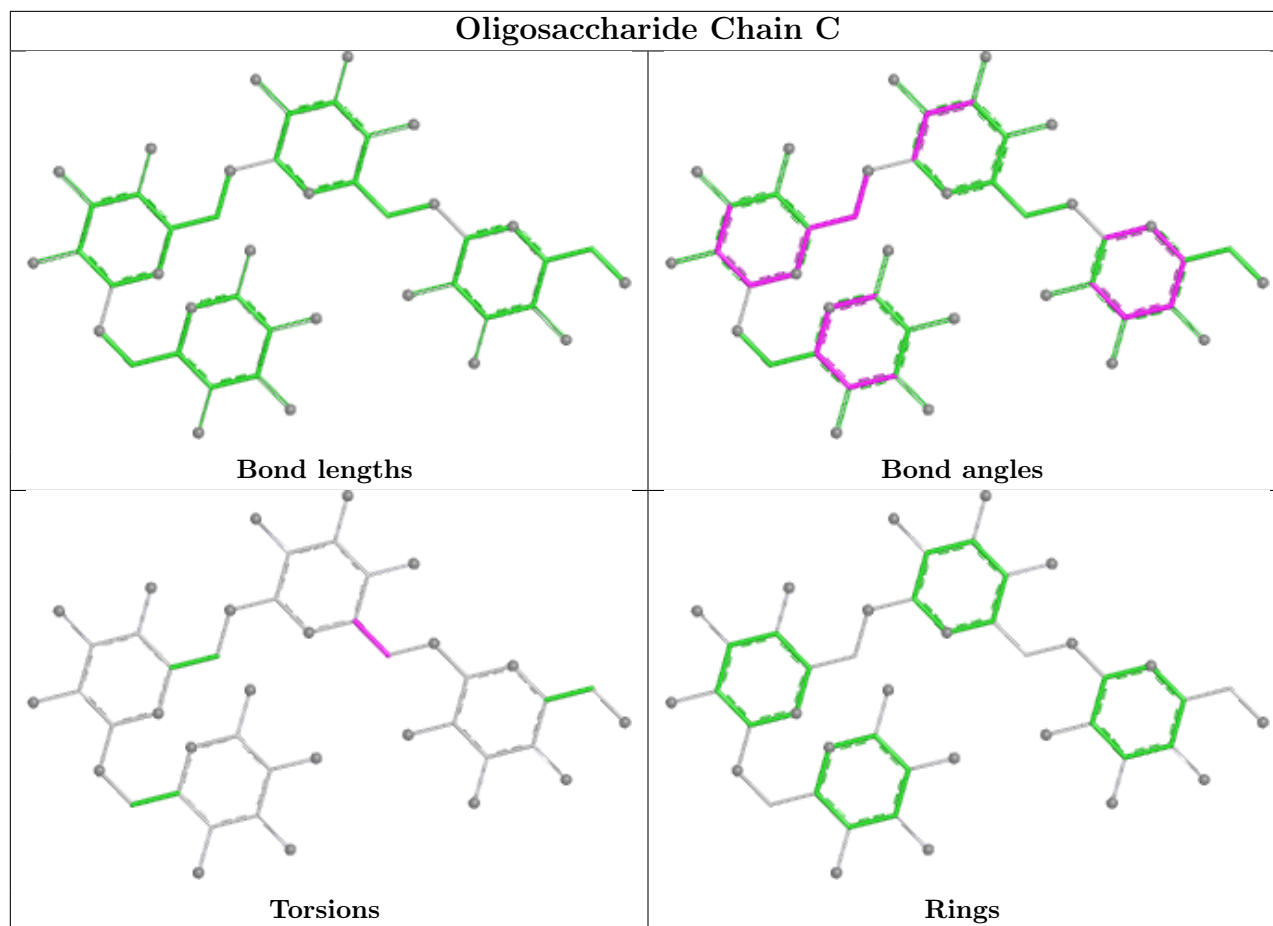
Mol	Chain	Res	Type	Atoms
3	C	3	GLC	C4-C5-C6-O6
3	C	3	GLC	O5-C5-C6-O6
2	B	4	GLC	C4-C5-C6-O6

There are no ring outliers.

No monomer is involved in short contacts.

The following is a two-dimensional graphical depiction of Mogul quality analysis of bond lengths, bond angles, torsion angles, and ring geometry for oligosaccharide.





## 5.6 Ligand geometry [i](#)

Of 11 ligands modelled in this entry, 2 are monoatomic - leaving 9 for Mogul analysis.

In the following table, the Counts columns list the number of bonds (or angles) for which Mogul statistics could be retrieved, the number of bonds (or angles) that are observed in the model and the number of bonds (or angles) that are defined in the Chemical Component Dictionary. The Link column lists molecule types, if any, to which the group is linked. The Z score for a bond length (or angle) is the number of standard deviations the observed value is removed from the expected value. A bond length (or angle) with  $|Z| > 2$  is considered an outlier worth inspection. RMSZ is the root-mean-square of all Z scores of the bond lengths (or angles).

Mol	Type	Chain	Res	Link	Bond lengths			Bond angles		
					Counts	RMSZ	# Z  > 2	Counts	RMSZ	# Z  > 2
6	SO4	A	806	-	4,4,4	0.50	0	6,6,6	0.79	0
6	SO4	A	807	-	4,4,4	0.75	0	6,6,6	0.63	0
6	SO4	A	803	-	4,4,4	0.61	0	6,6,6	0.94	0
6	SO4	A	809	-	4,4,4	0.53	0	6,6,6	0.38	0
7	MES	A	811	-	12,12,12	2.24	2 (16%)	15,16,16	1.62	3 (20%)
6	SO4	A	805	-	4,4,4	0.61	0	6,6,6	0.39	0
6	SO4	A	810	-	4,4,4	0.52	0	6,6,6	0.22	0

Mol	Type	Chain	Res	Link	Bond lengths			Bond angles		
					Counts	RMSZ	# Z  > 2	Counts	RMSZ	# Z  > 2
6	SO4	A	804	-	4,4,4	0.62	0	6,6,6	0.52	0
6	SO4	A	808	-	4,4,4	0.51	0	6,6,6	0.26	0

In the following table, the Chirals column lists the number of chiral outliers, the number of chiral centers analysed, the number of these observed in the model and the number defined in the Chemical Component Dictionary. Similar counts are reported in the Torsion and Rings columns. '-' means no outliers of that kind were identified.

Mol	Type	Chain	Res	Link	Chirals	Torsions	Rings
7	MES	A	811	-	-	0/6/14/14	0/1/1/1

All (2) bond length outliers are listed below:

Mol	Chain	Res	Type	Atoms	Z	Observed(Å)	Ideal(Å)
7	A	811	MES	C8-S	-6.92	1.67	1.77
7	A	811	MES	O2S-S	2.52	1.52	1.45

All (3) bond angle outliers are listed below:

Mol	Chain	Res	Type	Atoms	Z	Observed(°)	Ideal(°)
7	A	811	MES	O2S-S-C8	3.65	112.24	106.73
7	A	811	MES	O1-C2-C3	2.70	117.59	111.77
7	A	811	MES	O1S-S-C8	-2.46	103.01	106.73

There are no chirality outliers.

There are no torsion outliers.

There are no ring outliers.

1 monomer is involved in 1 short contact:

Mol	Chain	Res	Type	Clashes	Symm-Clashes
6	A	808	SO4	1	0

## 5.7 Other polymers [i](#)

There are no such residues in this entry.

## 5.8 Polymer linkage issues [i](#)

There are no chain breaks in this entry.



## 6 Fit of model and data

### 6.1 Protein, DNA and RNA chains

In the following table, the column labelled ‘#RSRZ > 2’ contains the number (and percentage) of RSRZ outliers, followed by percent RSRZ outliers for the chain as percentile scores relative to all X-ray entries and entries of similar resolution. The OWAB column contains the minimum, median, 95<sup>th</sup> percentile and maximum values of the occupancy-weighted average B-factor per residue. The column labelled ‘Q < 0.9’ lists the number of (and percentage) of residues with an average occupancy less than 0.9.

Mol	Chain	Analysed	<RSRZ>	#RSRZ>2	OWAB(Å <sup>2</sup> )	Q<0.9
1	A	701/710 (98%)	-0.09	26 (3%) <span style="border: 1px solid red; padding: 2px;">41</span> <span style="border: 1px solid red; padding: 2px;">34</span>	43, 67, 108, 189	0

All (26) RSRZ outliers are listed below:

Mol	Chain	Res	Type	RSRZ
1	A	623	SER	6.6
1	A	624	GLN	6.6
1	A	41	SER	6.5
1	A	687	GLY	6.5
1	A	620	ASP	5.0
1	A	621	THR	4.1
1	A	622	GLY	4.1
1	A	718	ALA	3.9
1	A	719	GLY	3.8
1	A	42	GLY	3.6
1	A	71	GLY	3.1
1	A	686	ILE	2.9
1	A	713	THR	2.9
1	A	684	ILE	2.6
1	A	96	LEU	2.6
1	A	68	ASN	2.6
1	A	129	LEU	2.6
1	A	101	GLY	2.5
1	A	627	ASN	2.4
1	A	69	GLY	2.4
1	A	692	ILE	2.3
1	A	690	GLU	2.2
1	A	691	THR	2.2
1	A	638	SER	2.1
1	A	70	THR	2.1
1	A	721	LYS	2.0

## 6.2 Non-standard residues in protein, DNA, RNA chains [i](#)

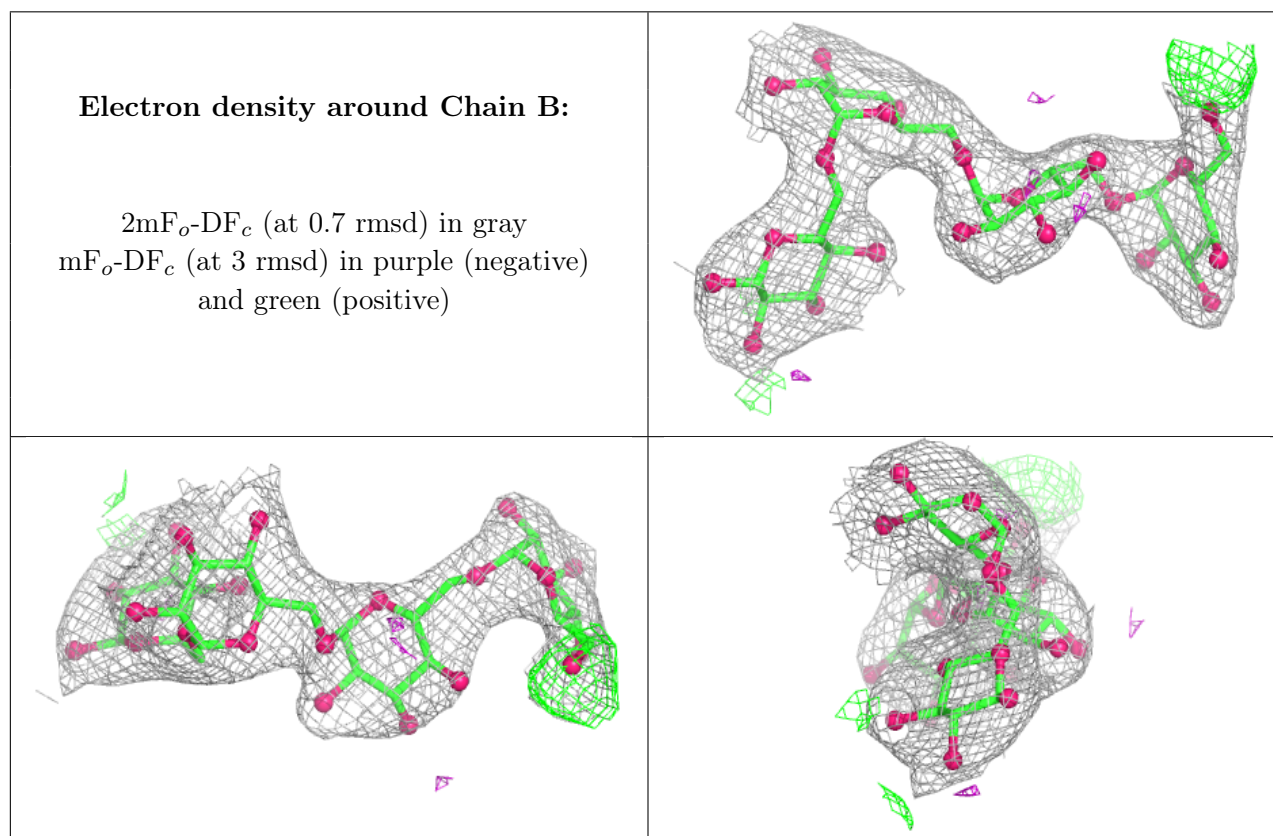
There are no non-standard protein/DNA/RNA residues in this entry.

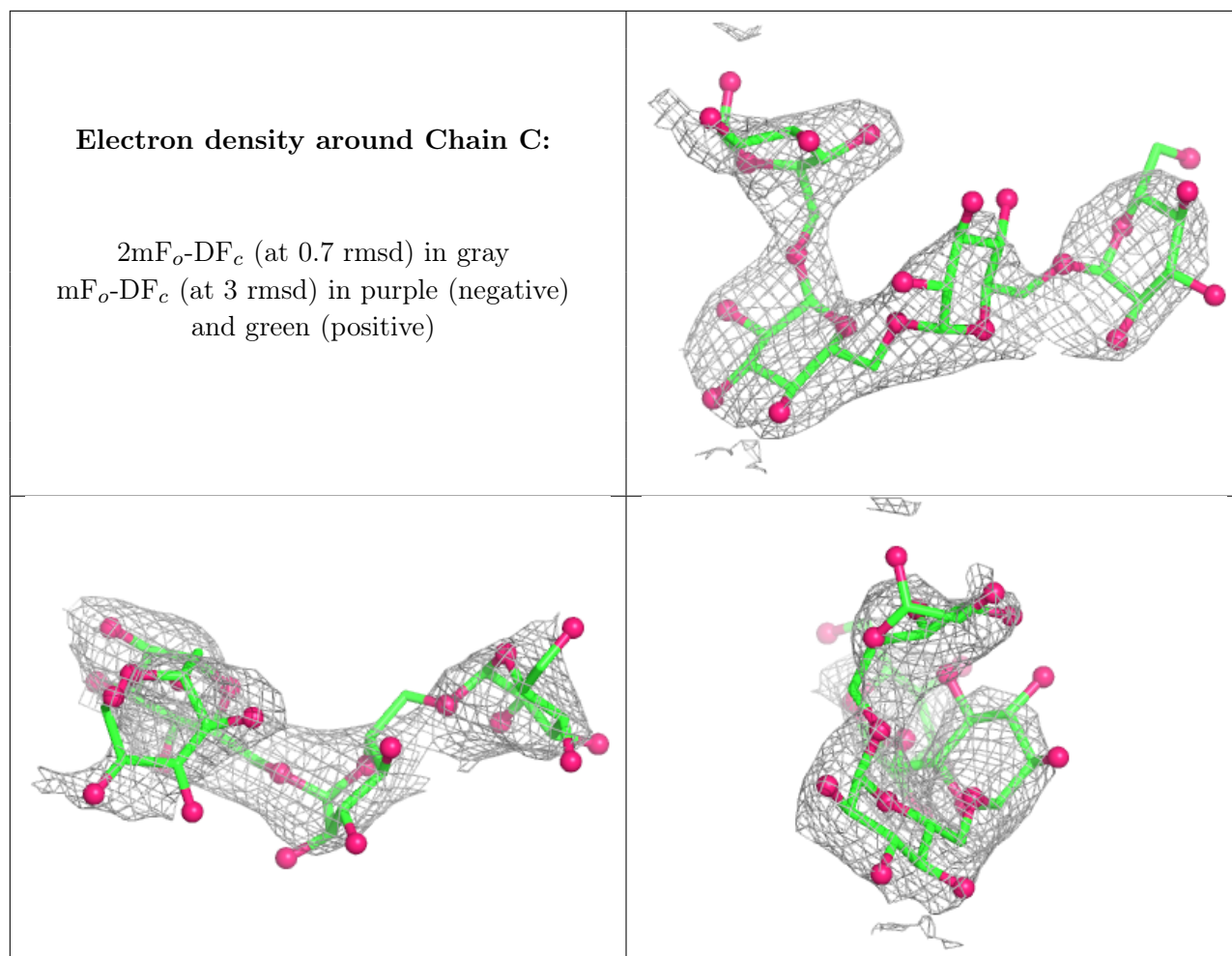
## 6.3 Carbohydrates [i](#)

In the following table, the Atoms column lists the number of modelled atoms in the group and the number defined in the chemical component dictionary. The B-factors column lists the minimum, median, 95<sup>th</sup> percentile and maximum values of B factors of atoms in the group. The column labelled 'Q< 0.9' lists the number of atoms with occupancy less than 0.9.

Mol	Type	Chain	Res	Atoms	RSCC	RSR	B-factors(Å <sup>2</sup> )	Q<0.9
3	GLC	C	1	12/12	0.65	0.34	109,131,149,154	0
2	GLC	B	4	11/12	0.79	0.21	77,85,100,101	0
3	GLC	C	3	11/12	0.84	0.41	105,124,141,150	0
3	GLC	C	4	11/12	0.85	0.38	110,130,143,147	0
3	GLC	C	2	11/12	0.92	0.24	89,103,113,127	0
2	GLC	B	3	11/12	0.94	0.15	67,72,82,85	0
2	BGC	B	1	12/12	0.97	0.20	41,44,49,50	0
2	GLC	B	2	11/12	0.98	0.16	42,46,49,58	0

The following is a graphical depiction of the model fit to experimental electron density for oligosaccharide. Each fit is shown from different orientation to approximate a three-dimensional view.





## 6.4 Ligands [i](#)

In the following table, the Atoms column lists the number of modelled atoms in the group and the number defined in the chemical component dictionary. The B-factors column lists the minimum, median, 95<sup>th</sup> percentile and maximum values of B factors of atoms in the group. The column labelled 'Q< 0.9' lists the number of atoms with occupancy less than 0.9.

Mol	Type	Chain	Res	Atoms	RSCC	RSR	B-factors(Å <sup>2</sup> )	Q<0.9
5	NA	A	802	1/1	0.81	0.36	83,83,83,83	0
6	SO4	A	804	5/5	0.89	0.21	89,101,118,128	0
6	SO4	A	806	5/5	0.89	0.23	74,76,107,122	0
6	SO4	A	805	5/5	0.91	0.13	95,98,118,118	0
6	SO4	A	810	5/5	0.92	0.28	94,105,117,123	0
6	SO4	A	809	5/5	0.94	0.20	84,91,103,107	0
6	SO4	A	808	5/5	0.94	0.10	99,102,110,121	0
6	SO4	A	807	5/5	0.96	0.11	76,82,86,95	0
6	SO4	A	803	5/5	0.97	0.09	69,69,86,93	0
4	CA	A	801	1/1	0.98	0.04	71,71,71,71	0

*Continued on next page...*

*Continued from previous page...*

Mol	Type	Chain	Res	Atoms	RSCC	RSR	B-factors( $\text{\AA}^2$ )	Q<0.9
7	MES	A	811	12/12	0.98	0.13	58,63,70,71	0

## 6.5 Other polymers [i](#)

There are no such residues in this entry.