



wwPDB X-ray Structure Validation Summary Report ⓘ

Sep 13, 2020 – 01:28 PM BST

PDB ID : 3WOM
Title : Crystal structure of the DAP BII dipeptide complex II
Authors : Sakamoto, Y.; Suzuki, Y.; Iizuka, I.; Tateoka, C.; Roppongi, S.; Fujimoto, M.;
Nonaka, T.; Ogasawara, W.; Tanaka, N.
Deposited on : 2013-12-29
Resolution : 1.86 Å(reported)

This is a wwPDB X-ray Structure Validation Summary Report for a publicly released PDB entry.

We welcome your comments at validation@mail.wwpdb.org

A user guide is available at

<https://www.wwpdb.org/validation/2017/XrayValidationReportHelp>

with specific help available everywhere you see the ⓘ symbol.

The following versions of software and data (see [references ⓘ](#)) were used in the production of this report:

MolProbity : 4.02b-467
Mogul : 1.8.5 (274361), CSD as541be (2020)
Xtriage (Phenix) : 1.13
EDS : 2.14.4.dev1
Percentile statistics : 20191225.v01 (using entries in the PDB archive December 25th 2019)
Refmac : 5.8.0158
CCP4 : 7.0.044 (Gargrove)
Ideal geometry (proteins) : Engh & Huber (2001)
Ideal geometry (DNA, RNA) : Parkinson et al. (1996)
Validation Pipeline (wwPDB-VP) : 2.14.4.dev1

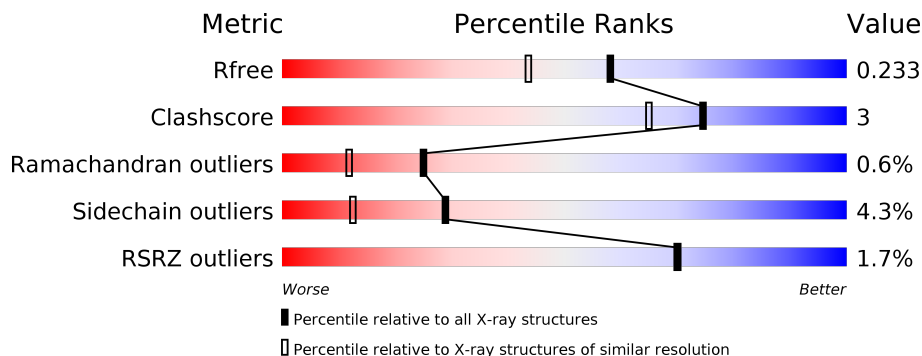
1 Overall quality at a glance

The following experimental techniques were used to determine the structure:

X-RAY DIFFRACTION

The reported resolution of this entry is 1.86 Å.

Percentile scores (ranging between 0-100) for global validation metrics of the entry are shown in the following graphic. The table shows the number of entries on which the scores are based.



Metric	Whole archive (#Entries)	Similar resolution (#Entries, resolution range(Å))
R_{free}	130704	2469 (1.86-1.86)
Clashscore	141614	2625 (1.86-1.86)
Ramachandran outliers	138981	2592 (1.86-1.86)
Sidechain outliers	138945	2592 (1.86-1.86)
RSRZ outliers	127900	2436 (1.86-1.86)

The table below summarises the geometric issues observed across the polymeric chains and their fit to the electron density. The red, orange, yellow and green segments on the lower bar indicate the fraction of residues that contain outliers for ≥ 3 , 2, 1 and 0 types of geometric quality criteria respectively. A grey segment represents the fraction of residues that are not modelled. The numeric value for each fraction is indicated below the corresponding segment, with a dot representing fractions $\leq 5\%$. The upper red bar (where present) indicates the fraction of residues that have poor fit to the electron density. The numeric value is given above the bar.

Mol	Chain	Length	Quality of chain
1	A	698	
1	B	698	

The following table lists non-polymeric compounds, carbohydrate monomers and non-standard residues in protein, DNA, RNA chains that are outliers for geometric or electron-density-fit criteria:

Mol	Type	Chain	Res	Chirality	Geometry	Clashes	Electron density
4	GOL	A	804	-	-	X	-

2 Entry composition [i](#)

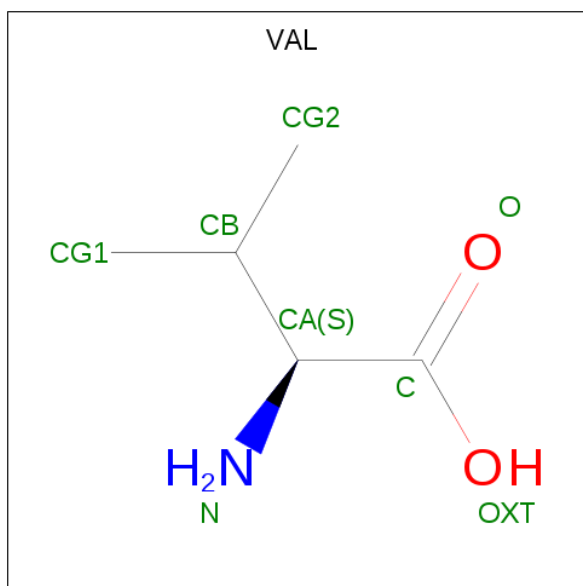
There are 6 unique types of molecules in this entry. The entry contains 11830 atoms, of which 0 are hydrogens and 0 are deuteriums.

In the tables below, the ZeroOcc column contains the number of atoms modelled with zero occupancy, the AltConf column contains the number of residues with at least one atom in alternate conformation and the Trace column contains the number of residues modelled with at most 2 atoms.

- Molecule 1 is a protein called dipeptidyl aminopeptidase BII.

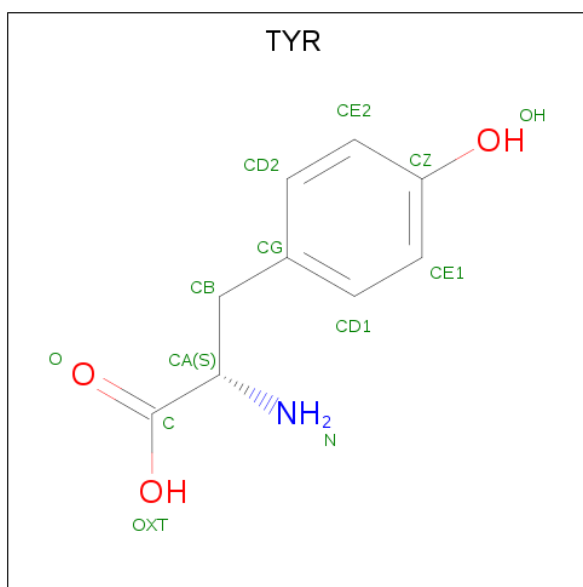
Mol	Chain	Residues	Atoms					ZeroOcc	AltConf	Trace
			Total	C	N	O	S			
1	A	697	Total 5371	C 3398	N 937	O 1017	S 19	0	0	0
1	B	697	Total 5371	C 3398	N 937	O 1017	S 19	0	0	0

- Molecule 2 is VALINE (three-letter code: VAL) (formula: $C_5H_{11}NO_2$).



Mol	Chain	Residues	Atoms				ZeroOcc	AltConf
			Total	C	N	O		
2	A	1	Total 7	C 5	N 1	O 1	0	0
2	B	1	Total 7	C 5	N 1	O 1	0	0

- Molecule 3 is TYROSINE (three-letter code: TYR) (formula: $C_9H_{11}NO_3$).



Mol	Chain	Residues	Atoms			ZeroOcc	AltConf	
3	A	1	Total	C	N	O	0	0
			13	9	1	3		
3	B	1	Total	C	N	O	0	0
			13	9	1	3		

- Molecule 4 is GLYCEROL (three-letter code: GOL) (formula: C₃H₈O₃).



Mol	Chain	Residues	Atoms			ZeroOcc	AltConf
4	A	1	Total	C	O	0	0
			6	3	3		
4	A	1	Total	C	O	0	0
			6	3	3		

Continued on next page...

Continued from previous page...

Mol	Chain	Residues	Atoms			ZeroOcc	AltConf
4	A	1	Total	C	O	0	0
			6	3	3		
4	A	1	Total	C	O	0	0
			6	3	3		
4	A	1	Total	C	O	0	0
			6	3	3		
4	A	1	Total	C	O	0	0
			6	3	3		
4	B	1	Total	C	O	0	0
			6	3	3		
4	B	1	Total	C	O	0	0
			6	3	3		
4	B	1	Total	C	O	0	0
			6	3	3		

- Molecule 5 is ZINC ION (three-letter code: ZN) (formula: Zn).

Mol	Chain	Residues	Atoms		ZeroOcc	AltConf
5	B	2	Total	Zn	0	0
			2	2		
5	A	2	Total	Zn	0	0
			2	2		

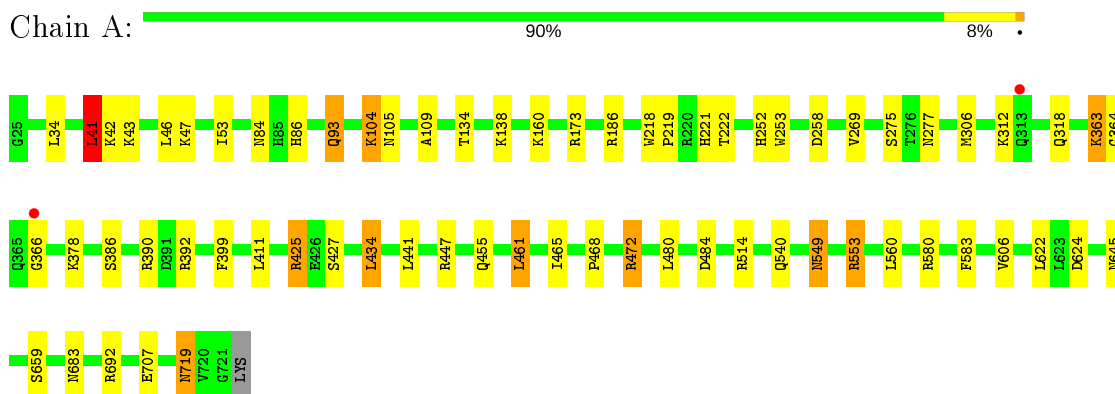
- Molecule 6 is water.

Mol	Chain	Residues	Atoms		ZeroOcc	AltConf
6	A	584	Total	O	0	0
			584	584		
6	B	400	Total	O	0	0
			400	400		

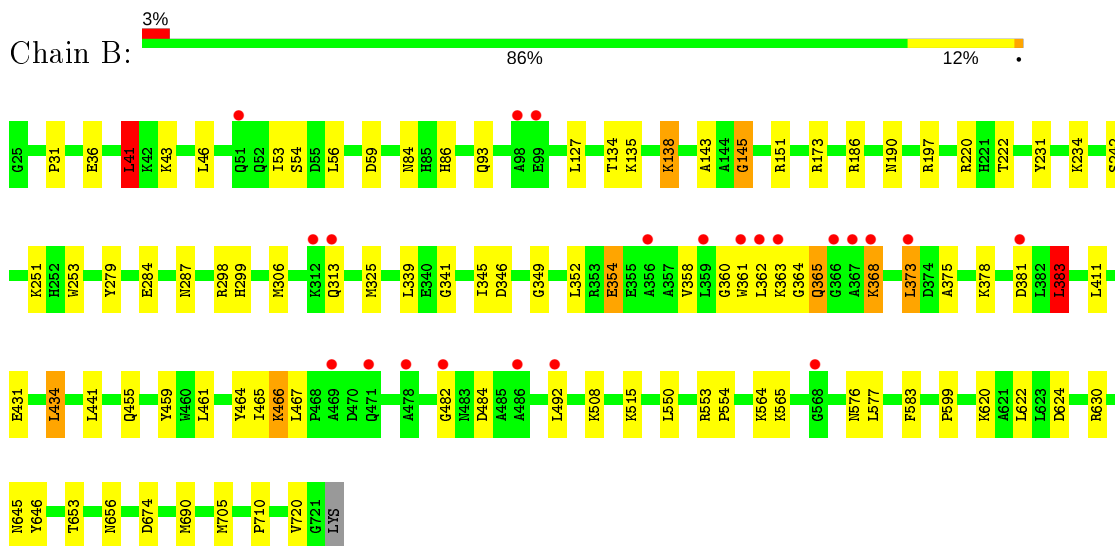
3 Residue-property plots [i](#)

These plots are drawn for all protein, RNA, DNA and oligosaccharide chains in the entry. The first graphic for a chain summarises the proportions of the various outlier classes displayed in the second graphic. The second graphic shows the sequence view annotated by issues in geometry and electron density. Residues are color-coded according to the number of geometric quality criteria for which they contain at least one outlier: green = 0, yellow = 1, orange = 2 and red = 3 or more. A red dot above a residue indicates a poor fit to the electron density ($RSRZ > 2$). Stretches of 2 or more consecutive residues without any outlier are shown as a green connector. Residues present in the sample, but not in the model, are shown in grey.

- Molecule 1: dipeptidyl aminopeptidase BII



- Molecule 1: dipeptidyl aminopeptidase BII



4 Data and refinement statistics

Property	Value	Source
Space group	P 43 21 2	Depositor
Cell constants a, b, c, α , β , γ	122.22Å 122.22Å 219.76Å 90.00° 90.00° 90.00°	Depositor
Resolution (Å)	39.21 – 1.86 39.18 – 1.86	Depositor EDS
% Data completeness (in resolution range)	98.3 (39.21-1.86) 98.3 (39.18-1.86)	Depositor EDS
R_{merge}	(Not available)	Depositor
R_{sym}	(Not available)	Depositor
$\langle I/\sigma(I) \rangle$ ¹	3.50 (at 1.85Å)	Xtrriage
Refinement program	REFMAC 5.7.0032	Depositor
R, R_{free}	0.183 , 0.225 0.192 , 0.233	Depositor DCC
R_{free} test set	6897 reflections (5.03%)	wwPDB-VP
Wilson B-factor (Å ²)	20.4	Xtrriage
Anisotropy	0.013	Xtrriage
Bulk solvent k_{sol} (e/Å ³), B_{sol} (Å ²)	0.36 , 45.9	EDS
L-test for twinning ²	$\langle L \rangle = 0.43$, $\langle L^2 \rangle = 0.25$	Xtrriage
Estimated twinning fraction	No twinning to report.	Xtrriage
F_o, F_c correlation	0.95	EDS
Total number of atoms	11830	wwPDB-VP
Average B, all atoms (Å ²)	27.0	wwPDB-VP

Xtrriage's analysis on translational NCS is as follows: *The analyses of the Patterson function reveals a significant off-origin peak that is 22.90 % of the origin peak, indicating pseudo-translational symmetry. The chance of finding a peak of this or larger height randomly in a structure without pseudo-translational symmetry is equal to 5.1937e-03. The detected translational NCS is most likely also responsible for the elevated intensity ratio.*

¹Intensities estimated from amplitudes.

²Theoretical values of $\langle |L| \rangle$, $\langle L^2 \rangle$ for acentric reflections are 0.5, 0.333 respectively for untwinned datasets, and 0.375, 0.2 for perfectly twinned datasets.

5 Model quality [i](#)

5.1 Standard geometry [i](#)

Bond lengths and bond angles in the following residue types are not validated in this section: GOL, ZN

The Z score for a bond length (or angle) is the number of standard deviations the observed value is removed from the expected value. A bond length (or angle) with $|Z| > 5$ is considered an outlier worth inspection. RMSZ is the root-mean-square of all Z scores of the bond lengths (or angles).

Mol	Chain	Bond lengths		Bond angles	
		RMSZ	# Z >5	RMSZ	# Z >5
1	A	0.99	0/5489	0.97	18/7440 (0.2%)
1	B	0.90	0/5489	0.94	12/7440 (0.2%)
All	All	0.95	0/10978	0.95	30/14880 (0.2%)

Chiral center outliers are detected by calculating the chiral volume of a chiral center and verifying if the center is modelled as a planar moiety or with the opposite hand. A planarity outlier is detected by checking planarity of atoms in a peptide group, atoms in a mainchain group or atoms of a sidechain that are expected to be planar.

Mol	Chain	#Chirality outliers	#Planarity outliers
1	A	0	1
1	B	0	6
All	All	0	7

There are no bond length outliers.

The worst 5 of 30 bond angle outliers are listed below:

Mol	Chain	Res	Type	Atoms	Z	Observed(°)	Ideal(°)
1	A	186	ARG	NE-CZ-NH1	9.33	124.97	120.30
1	B	325	MET	CG-SD-CE	-7.87	87.60	100.20
1	A	472	ARG	NE-CZ-NH1	7.69	124.15	120.30
1	B	630	ARG	NE-CZ-NH1	7.17	123.88	120.30
1	A	392	ARG	NE-CZ-NH1	-7.10	116.75	120.30

There are no chirality outliers.

5 of 7 planarity outliers are listed below:

Mol	Chain	Res	Type	Group
1	A	363	LYS	Peptide

Continued on next page...

Continued from previous page...

Mol	Chain	Res	Type	Group
1	B	145	GLY	Peptide
1	B	313	GLN	Peptide
1	B	363	LYS	Peptide
1	B	465	ILE	Peptide

5.2 Too-close contacts [i](#)

In the following table, the Non-H and H(model) columns list the number of non-hydrogen atoms and hydrogen atoms in the chain respectively. The H(added) column lists the number of hydrogen atoms added and optimized by MolProbity. The Clashes column lists the number of clashes within the asymmetric unit, whereas Symm-Clashes lists symmetry related clashes.

Mol	Chain	Non-H	H(model)	H(added)	Clashes	Symm-Clashes
1	A	5371	0	5284	30	0
1	B	5371	0	5284	35	0
2	A	7	0	8	0	0
2	B	7	0	8	0	0
3	A	13	0	9	0	0
3	B	13	0	9	0	0
4	A	36	0	48	8	0
4	B	24	0	32	1	0
5	A	2	0	0	0	0
5	B	2	0	0	0	0
6	A	584	0	0	6	0
6	B	400	0	0	2	0
All	All	11830	0	10682	68	0

The all-atom clashscore is defined as the number of clashes found per 1000 atoms (including hydrogen atoms). The all-atom clashscore for this structure is 3.

The worst 5 of 68 close contacts within the same asymmetric unit are listed below, sorted by their clash magnitude.

Atom-1	Atom-2	Interatomic distance (Å)	Clash overlap (Å)
1:B:354:GLU:O	1:B:358:VAL:HG23	1.72	0.88
1:A:252:HIS:HD1	4:A:804:GOL:HO1	1.12	0.88
4:A:806:GOL:H11	6:A:1101:HOH:O	1.75	0.86
1:A:549:ASN:ND2	6:A:1478:HOH:O	2.17	0.77
1:A:252:HIS:ND1	4:A:804:GOL:O1	2.11	0.75

There are no symmetry-related clashes.

5.3 Torsion angles [i](#)

5.3.1 Protein backbone [i](#)

In the following table, the Percentiles column shows the percent Ramachandran outliers of the chain as a percentile score with respect to all X-ray entries followed by that with respect to entries of similar resolution.

The Analysed column shows the number of residues for which the backbone conformation was analysed, and the total number of residues.

Mol	Chain	Analysed	Favoured	Allowed	Outliers	Percentiles	
1	A	695/698 (100%)	678 (98%)	14 (2%)	3 (0%)	34	19
1	B	695/698 (100%)	660 (95%)	30 (4%)	5 (1%)	22	9
All	All	1390/1396 (100%)	1338 (96%)	44 (3%)	8 (1%)	25	12

5 of 8 Ramachandran outliers are listed below:

Mol	Chain	Res	Type
1	B	364	GLY
1	B	466	LYS
1	A	364	GLY
1	A	366	GLY
1	B	143	ALA

5.3.2 Protein sidechains [i](#)

In the following table, the Percentiles column shows the percent sidechain outliers of the chain as a percentile score with respect to all X-ray entries followed by that with respect to entries of similar resolution.

The Analysed column shows the number of residues for which the sidechain conformation was analysed, and the total number of residues.

Mol	Chain	Analysed	Rotameric	Outliers	Percentiles	
1	A	541/542 (100%)	523 (97%)	18 (3%)	38	21
1	B	541/542 (100%)	512 (95%)	29 (5%)	22	8
All	All	1082/1084 (100%)	1035 (96%)	47 (4%)	29	12

5 of 47 residues with a non-rotameric sidechain are listed below:

Mol	Chain	Res	Type
1	B	59	ASP

Continued on next page...

Continued from previous page...

Mol	Chain	Res	Type
1	B	242	SER
1	B	508	LYS
1	B	135	LYS
1	B	251	LYS

Some sidechains can be flipped to improve hydrogen bonding and reduce clashes. 5 of 30 such sidechains are listed below:

Mol	Chain	Res	Type
1	A	645	ASN
1	B	84	ASN
1	B	443	GLN
1	A	706	GLN
1	B	93	GLN

5.3.3 RNA [i](#)

There are no RNA molecules in this entry.

5.4 Non-standard residues in protein, DNA, RNA chains [i](#)

There are no non-standard protein/DNA/RNA residues in this entry.

5.5 Carbohydrates [i](#)

There are no monosaccharides in this entry.

5.6 Ligand geometry [i](#)

Of 18 ligands modelled in this entry, 4 are monoatomic - leaving 14 for Mogul analysis.

In the following table, the Counts columns list the number of bonds (or angles) for which Mogul statistics could be retrieved, the number of bonds (or angles) that are observed in the model and the number of bonds (or angles) that are defined in the Chemical Component Dictionary. The Link column lists molecule types, if any, to which the group is linked. The Z score for a bond length (or angle) is the number of standard deviations the observed value is removed from the expected value. A bond length (or angle) with $|Z| > 2$ is considered an outlier worth inspection. RMSZ is the root-mean-square of all Z scores of the bond lengths (or angles).

Mol	Type	Chain	Res	Link	Bond lengths			Bond angles		
					Counts	RMSZ	# Z > 2	Counts	RMSZ	# Z > 2
4	GOL	A	805	-	5,5,5	0.66	0	5,5,5	0.37	0
4	GOL	B	803	-	5,5,5	0.42	0	5,5,5	0.64	0
2	VAL	A	801	3	4,6,7	0.77	0	6,7,9	0.49	0
3	TYR	B	802	2	10,13,13	1.19	1 (10%)	12,17,17	0.76	0
3	TYR	A	802	2	10,13,13	1.54	1 (10%)	12,17,17	0.82	0
4	GOL	A	806	-	5,5,5	0.60	0	5,5,5	1.31	0
4	GOL	B	806	-	5,5,5	0.64	0	5,5,5	1.13	0
2	VAL	B	801	3	4,6,7	0.62	0	6,7,9	1.07	1 (16%)
4	GOL	B	805	-	5,5,5	0.55	0	5,5,5	0.49	0
4	GOL	A	808	-	5,5,5	0.40	0	5,5,5	0.66	0
4	GOL	A	807	-	5,5,5	0.39	0	5,5,5	0.30	0
4	GOL	A	804	-	5,5,5	0.37	0	5,5,5	2.16	1 (20%)
4	GOL	A	803	-	5,5,5	0.12	0	5,5,5	0.74	0
4	GOL	B	804	-	5,5,5	0.80	0	5,5,5	0.91	0

In the following table, the Chirals column lists the number of chiral outliers, the number of chiral centers analysed, the number of these observed in the model and the number defined in the Chemical Component Dictionary. Similar counts are reported in the Torsion and Rings columns. '-' means no outliers of that kind were identified.

Mol	Type	Chain	Res	Link	Chirals	Torsions	Rings
4	GOL	A	805	-	-	2/4/4/4	-
4	GOL	B	803	-	-	0/4/4/4	-
2	VAL	A	801	3	-	0/5/6/8	-
3	TYR	B	802	2	-	2/4/8/8	0/1/1/1
3	TYR	A	802	2	-	2/4/8/8	0/1/1/1
4	GOL	A	806	-	-	4/4/4/4	-
4	GOL	B	806	-	-	1/4/4/4	-
2	VAL	B	801	3	-	1/5/6/8	-
4	GOL	B	805	-	-	1/4/4/4	-
4	GOL	A	808	-	-	3/4/4/4	-
4	GOL	A	807	-	-	2/4/4/4	-
4	GOL	A	804	-	-	0/4/4/4	-
4	GOL	A	803	-	-	0/4/4/4	-
4	GOL	B	804	-	-	2/4/4/4	-

All (2) bond length outliers are listed below:

Mol	Chain	Res	Type	Atoms	Z	Observed(Å)	Ideal(Å)
3	A	802	TYR	CE2-CZ	-2.49	1.34	1.38

Continued on next page...

Continued from previous page...

Mol	Chain	Res	Type	Atoms	Z	Observed(Å)	Ideal(Å)
3	B	802	TYR	CE2-CZ	-2.30	1.34	1.38

All (2) bond angle outliers are listed below:

Mol	Chain	Res	Type	Atoms	Z	Observed(°)	Ideal(°)
4	A	804	GOL	O1-C1-C2	-4.36	89.30	110.20
2	B	801	VAL	CB-CA-C	-2.21	109.95	112.94

There are no chirality outliers.

5 of 20 torsion outliers are listed below:

Mol	Chain	Res	Type	Atoms
4	A	806	GOL	O1-C1-C2-C3
4	A	808	GOL	C1-C2-C3-O3
4	B	804	GOL	O1-C1-C2-C3
4	A	806	GOL	C1-C2-C3-O3
4	A	806	GOL	O1-C1-C2-O2

There are no ring outliers.

5 monomers are involved in 9 short contacts:

Mol	Chain	Res	Type	Clashes	Symm-Clashes
4	A	806	GOL	2	0
4	A	808	GOL	1	0
4	A	807	GOL	1	0
4	A	804	GOL	4	0
4	B	804	GOL	1	0

5.7 Other polymers [i](#)

There are no such residues in this entry.

5.8 Polymer linkage issues [i](#)

There are no chain breaks in this entry.

6 Fit of model and data [i](#)

6.1 Protein, DNA and RNA chains [i](#)

In the following table, the column labelled ‘#RSRZ> 2’ contains the number (and percentage) of RSRZ outliers, followed by percent RSRZ outliers for the chain as percentile scores relative to all X-ray entries and entries of similar resolution. The OWAB column contains the minimum, median, 95th percentile and maximum values of the occupancy-weighted average B-factor per residue. The column labelled ‘Q< 0.9’ lists the number of (and percentage) of residues with an average occupancy less than 0.9.

Mol	Chain	Analysed	<RSRZ>	#RSRZ>2	OWAB(Å ²)	Q<0.9
1	A	697/698 (99%)	-0.37	2 (0%) 94 93	9, 22, 36, 54	0
1	B	697/698 (99%)	0.02	22 (3%) 47 45	12, 31, 54, 83	0
All	All	1394/1396 (99%)	-0.18	24 (1%) 70 70	9, 25, 49, 83	0

The worst 5 of 24 RSRZ outliers are listed below:

Mol	Chain	Res	Type	RSRZ
1	B	469	ALA	4.2
1	B	368	LYS	3.9
1	B	363	LYS	3.7
1	B	367	ALA	3.5
1	B	482	GLY	3.1

6.2 Non-standard residues in protein, DNA, RNA chains [i](#)

There are no non-standard protein/DNA/RNA residues in this entry.

6.3 Carbohydrates [i](#)

There are no monosaccharides in this entry.

6.4 Ligands [i](#)

In the following table, the Atoms column lists the number of modelled atoms in the group and the number defined in the chemical component dictionary. The B-factors column lists the minimum, median, 95th percentile and maximum values of B factors of atoms in the group. The column labelled ‘Q< 0.9’ lists the number of atoms with occupancy less than 0.9.

Mol	Type	Chain	Res	Atoms	RSCC	RSR	B-factors(\AA^2)	Q<0.9
4	GOL	A	807	6/6	0.81	0.23	36,54,58,62	0
4	GOL	B	805	6/6	0.82	0.22	44,51,52,56	0
4	GOL	B	804	6/6	0.85	0.20	36,44,50,53	0
4	GOL	A	805	6/6	0.91	0.16	36,40,42,42	0
5	ZN	A	810	1/1	0.92	0.15	54,54,54,54	0
4	GOL	A	804	6/6	0.94	0.10	29,34,36,38	0
4	GOL	A	806	6/6	0.94	0.14	34,44,47,50	0
4	GOL	A	808	6/6	0.95	0.14	20,33,40,46	0
4	GOL	B	806	6/6	0.95	0.11	24,34,36,38	0
3	TYR	B	802	13/13	0.96	0.11	17,20,25,28	0
4	GOL	A	803	6/6	0.97	0.06	15,16,18,19	0
3	TYR	A	802	13/13	0.97	0.12	12,16,20,26	0
4	GOL	B	803	6/6	0.98	0.06	16,17,21,22	0
2	VAL	B	801	7/8	0.98	0.14	14,14,15,17	0
5	ZN	B	807	1/1	0.98	0.05	32,32,32,32	0
5	ZN	A	809	1/1	0.98	0.05	26,26,26,26	0
5	ZN	B	808	1/1	0.98	0.12	49,49,49,49	0
2	VAL	A	801	7/8	0.99	0.14	10,12,13,13	0

6.5 Other polymers [i](#)

There are no such residues in this entry.