



# Full wwPDB X-ray Structure Validation Report ⓘ

Nov 5, 2023 – 09:46 AM EST

PDB ID : 6WO2  
Title : Crystal Structure of the Grb2 SH2 Domain in Complex with a Tripeptide: A c-pY-Ac6c-N-isohexyl  
Authors : Martin, S.F.; Clements, J.H.  
Deposited on : 2020-04-24  
Resolution : 2.00 Å(reported)

This is a Full wwPDB X-ray Structure Validation Report for a publicly released PDB entry.

We welcome your comments at [validation@mail.wwpdb.org](mailto:validation@mail.wwpdb.org)

A user guide is available at

<https://www.wwpdb.org/validation/2017/XrayValidationReportHelp>

with specific help available everywhere you see the ⓘ symbol.

The types of validation reports are described at

<http://www.wwpdb.org/validation/2017/FAQs#types>.

---

The following versions of software and data (see [references ⓘ](#)) were used in the production of this report:

MolProbity : 4.02b-467  
Mogul : 1.8.5 (274361), CSD as541be (2020)  
Xtriage (Phenix) : 1.13  
EDS : 2.36  
Percentile statistics : 20191225.v01 (using entries in the PDB archive December 25th 2019)  
Refmac : 5.8.0158  
CCP4 : 7.0.044 (Gargrove)  
Ideal geometry (proteins) : Engh & Huber (2001)  
Ideal geometry (DNA, RNA) : Parkinson et al. (1996)  
Validation Pipeline (wwPDB-VP) : 2.36

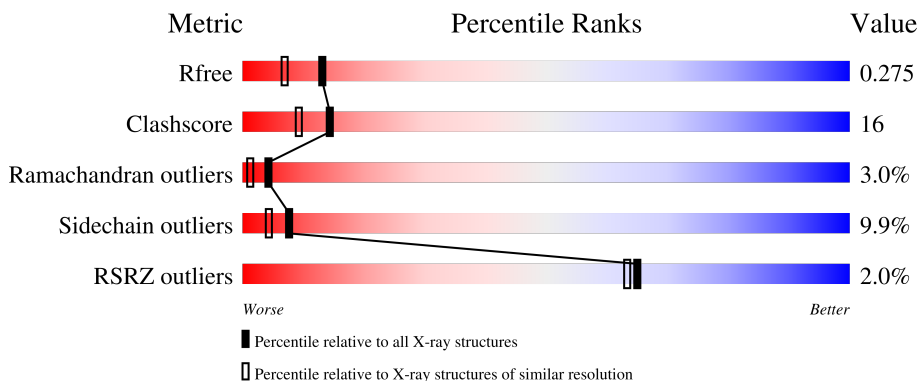
# 1 Overall quality at a glance i

The following experimental techniques were used to determine the structure:

*X-RAY DIFFRACTION*

The reported resolution of this entry is 2.00 Å.

Percentile scores (ranging between 0-100) for global validation metrics of the entry are shown in the following graphic. The table shows the number of entries on which the scores are based.



Metric	Whole archive (#Entries)	Similar resolution (#Entries, resolution range(Å))
$R_{free}$	130704	8085 (2.00-2.00)
Clashscore	141614	9178 (2.00-2.00)
Ramachandran outliers	138981	9054 (2.00-2.00)
Sidechain outliers	138945	9053 (2.00-2.00)
RSRZ outliers	127900	7900 (2.00-2.00)

The table below summarises the geometric issues observed across the polymeric chains and their fit to the electron density. The red, orange, yellow and green segments of the lower bar indicate the fraction of residues that contain outliers for  $\geq 3$ , 2, 1 and 0 types of geometric quality criteria respectively. A grey segment represents the fraction of residues that are not modelled. The numeric value for each fraction is indicated below the corresponding segment, with a dot representing fractions  $\leq 5\%$ . The upper red bar (where present) indicates the fraction of residues that have poor fit to the electron density. The numeric value is given above the bar.

Mol	Chain	Length	Quality of chain
1	A	117	 2% 67% 18% 14%
1	B	117	 2% 60% 17% 6% 14%
2	C	5	 60% 40%
2	D	5	 80% 20%

## 2 Entry composition [i](#)

There are 6 unique types of molecules in this entry. The entry contains 1853 atoms, of which 0 are hydrogens and 0 are deuteriums.

In the tables below, the ZeroOcc column contains the number of atoms modelled with zero occupancy, the AltConf column contains the number of residues with at least one atom in alternate conformation and the Trace column contains the number of residues modelled with at most 2 atoms.

- Molecule 1 is a protein called Growth factor receptor-bound protein 2.

Mol	Chain	Residues	Atoms					ZeroOcc	AltConf	Trace
			Total	C	N	O	S			
1	A	101	834	535	149	148	2	7	0	0
1	B	101	849	543	151	153	2	3	2	0

There are 12 discrepancies between the modelled and reference sequences:

Chain	Residue	Modelled	Actual	Comment	Reference
A	164	HIS	-	expression tag	UNP P62993
A	165	HIS	-	expression tag	UNP P62993
A	166	HIS	-	expression tag	UNP P62993
A	167	HIS	-	expression tag	UNP P62993
A	168	HIS	-	expression tag	UNP P62993
A	169	HIS	-	expression tag	UNP P62993
B	164	HIS	-	expression tag	UNP P62993
B	165	HIS	-	expression tag	UNP P62993
B	166	HIS	-	expression tag	UNP P62993
B	167	HIS	-	expression tag	UNP P62993
B	168	HIS	-	expression tag	UNP P62993
B	169	HIS	-	expression tag	UNP P62993

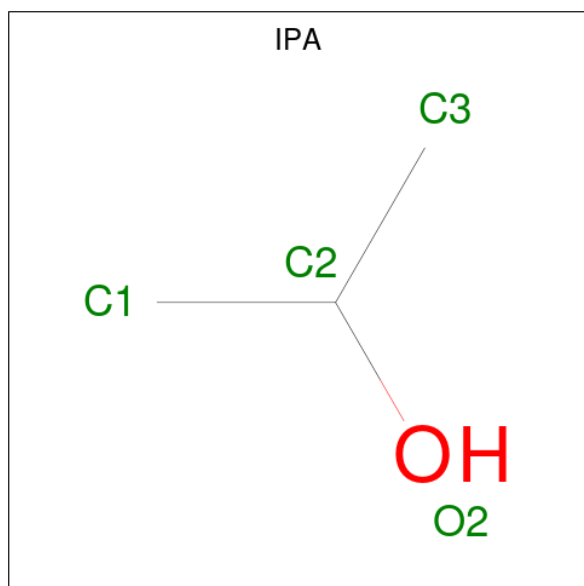
- Molecule 2 is a protein called ACE-PTR-02K-ASN-U67.

Mol	Chain	Residues	Atoms					ZeroOcc	AltConf	Trace
			Total	C	N	O	P			
2	C	5	43	28	5	9	1	0	0	0
2	D	5	43	28	5	9	1	0	0	0

- Molecule 3 is CALCIUM ION (three-letter code: CA) (formula: Ca).

Mol	Chain	Residues	Atoms	ZeroOcc	AltConf
3	A	1	Total Ca 1 1	0	0

- Molecule 4 is ISOPROPYL ALCOHOL (three-letter code: IPA) (formula: C<sub>3</sub>H<sub>8</sub>O).



Mol	Chain	Residues	Atoms	ZeroOcc	AltConf
4	A	1	Total C O 4 3 1	0	0
4	B	1	Total C O 4 3 1	0	0

- Molecule 5 is SODIUM ION (three-letter code: NA) (formula: Na).

Mol	Chain	Residues	Atoms	ZeroOcc	AltConf
5	B	1	Total Na 1 1	0	0

- Molecule 6 is water.

Mol	Chain	Residues	Atoms	ZeroOcc	AltConf
6	A	39	Total O 39 39	0	0
6	B	32	Total O 32 32	0	0
6	C	1	Total O 1 1	0	0

*Continued on next page...*

*Continued from previous page...*

<b>Mol</b>	<b>Chain</b>	<b>Residues</b>	<b>Atoms</b>		<b>ZeroOcc</b>	<b>AltConf</b>
6	D	2	Total	O	0	0
			2	2		

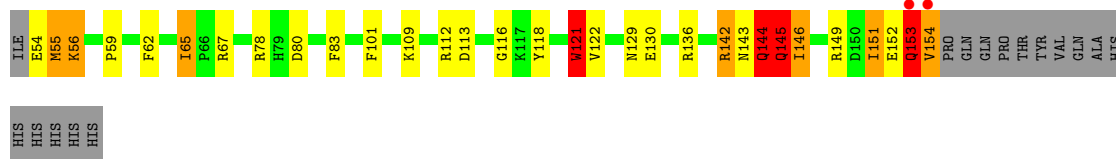
### 3 Residue-property plots [i](#)

These plots are drawn for all protein, RNA, DNA and oligosaccharide chains in the entry. The first graphic for a chain summarises the proportions of the various outlier classes displayed in the second graphic. The second graphic shows the sequence view annotated by issues in geometry and electron density. Residues are color-coded according to the number of geometric quality criteria for which they contain at least one outlier: green = 0, yellow = 1, orange = 2 and red = 3 or more. A red dot above a residue indicates a poor fit to the electron density ( $RSRZ > 2$ ). Stretches of 2 or more consecutive residues without any outlier are shown as a green connector. Residues present in the sample, but not in the model, are shown in grey.

- Molecule 1: Growth factor receptor-bound protein 2



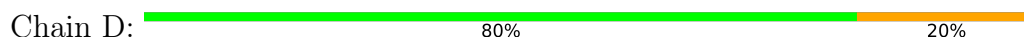
- Molecule 1: Growth factor receptor-bound protein 2



- Molecule 2: ACE-PTR-02K-ASN-U67



- Molecule 2: ACE-PTR-02K-ASN-U67



## 4 Data and refinement statistics

Property	Value	Source
Space group	P 21 21 21	Depositor
Cell constants a, b, c, $\alpha$ , $\beta$ , $\gamma$	32.23Å 62.72Å 90.14Å 90.00° 90.00° 90.00°	Depositor
Resolution (Å)	51.48 – 2.00 36.60 – 1.78	Depositor EDS
% Data completeness (in resolution range)	96.5 (51.48-2.00) 94.2 (36.60-1.78)	Depositor EDS
$R_{merge}$	0.07	Depositor
$R_{sym}$	(Not available)	Depositor
$\langle I/\sigma(I) \rangle$ <sup>1</sup>	2.18 (at 1.78Å)	Xtrriage
Refinement program	REFMAC 5.5.0109	Depositor
R, $R_{free}$	0.200 , 0.275 0.201 , 0.275	Depositor DCC
$R_{free}$ test set	885 reflections (5.16%)	wwPDB-VP
Wilson B-factor (Å <sup>2</sup> )	26.2	Xtrriage
Anisotropy	0.496	Xtrriage
Bulk solvent $k_{sol}$ (e/Å <sup>3</sup> ), $B_{sol}$ (Å <sup>2</sup> )	0.36 , 51.4	EDS
L-test for twinning <sup>2</sup>	$\langle  L  \rangle = 0.43$ , $\langle L^2 \rangle = 0.26$	Xtrriage
Estimated twinning fraction	No twinning to report.	Xtrriage
$F_o, F_c$ correlation	0.94	EDS
Total number of atoms	1853	wwPDB-VP
Average B, all atoms (Å <sup>2</sup> )	29.0	wwPDB-VP

Xtrriage's analysis on translational NCS is as follows: *The largest off-origin peak in the Patterson function is 8.85% of the height of the origin peak. No significant pseudotranslation is detected.*

<sup>1</sup>Intensities estimated from amplitudes.

<sup>2</sup>Theoretical values of  $\langle |L| \rangle$ ,  $\langle L^2 \rangle$  for acentric reflections are 0.5, 0.333 respectively for untwinned datasets, and 0.375, 0.2 for perfectly twinned datasets.

## 5 Model quality i

### 5.1 Standard geometry i

Bond lengths and bond angles in the following residue types are not validated in this section: PTR, IPA, ACE, NA, CA, U67, 02K

The Z score for a bond length (or angle) is the number of standard deviations the observed value is removed from the expected value. A bond length (or angle) with  $|Z| > 5$  is considered an outlier worth inspection. RMSZ is the root-mean-square of all Z scores of the bond lengths (or angles).

Mol	Chain	Bond lengths		Bond angles	
		RMSZ	# Z  >5	RMSZ	# Z  >5
1	A	1.07	2/856 (0.2%)	0.97	4/1150 (0.3%)
1	B	1.66	3/871 (0.3%)	1.13	8/1170 (0.7%)
2	C	0.62	0/7	1.12	0/8
2	D	0.73	0/7	0.94	0/8
All	All	1.39	5/1741 (0.3%)	1.05	12/2336 (0.5%)

Chiral center outliers are detected by calculating the chiral volume of a chiral center and verifying if the center is modelled as a planar moiety or with the opposite hand. A planarity outlier is detected by checking planarity of atoms in a peptide group, atoms in a mainchain group or atoms of a sidechain that are expected to be planar.

Mol	Chain	#Chirality outliers	#Planarity outliers
1	A	0	1

All (5) bond length outliers are listed below:

Mol	Chain	Res	Type	Atoms	Z	Observed(Å)	Ideal(Å)
1	B	121	TRP	CD2-CE3	25.82	1.79	1.40
1	B	121	TRP	CD2-CE2	-24.70	1.11	1.41
1	B	121	TRP	CD1-NE1	-20.03	1.03	1.38
1	A	54	GLU	CA-CB	-8.92	1.34	1.53
1	A	153	GLN	CG-CD	7.14	1.67	1.51

All (12) bond angle outliers are listed below:

Mol	Chain	Res	Type	Atoms	Z	Observed(°)	Ideal(°)
1	B	121	TRP	CD2-CE3-CZ3	-11.09	104.39	118.80
1	B	121	TRP	CE2-CD2-CE3	9.82	130.48	118.70
1	A	153	GLN	CG-CD-OE1	7.74	137.07	121.60
1	B	121	TRP	CG-CD2-CE3	-7.08	127.52	133.90

*Continued on next page...*



Continued from previous page...

Mol	Chain	Res	Type	Atoms	Z	Observed(°)	Ideal(°)
1	B	121	TRP	CE2-CD2-CG	-6.91	101.78	107.30
1	A	153	GLN	CG-CD-NE2	-6.84	100.29	116.70
1	A	54	GLU	N-CA-CB	6.54	122.38	110.60
1	B	121	TRP	CD1-NE1-CE2	6.24	114.62	109.00
1	B	144	GLN	C-N-CA	5.71	135.97	121.70
1	A	54	GLU	CB-CA-C	5.47	121.34	110.40
1	B	121	TRP	NE1-CE2-CD2	5.10	112.40	107.30
1	B	67	ARG	NE-CZ-NH1	5.01	122.81	120.30

There are no chirality outliers.

All (1) planarity outliers are listed below:

Mol	Chain	Res	Type	Group
1	A	103	ASN	Peptide

## 5.2 Too-close contacts [i](#)

In the following table, the Non-H and H(model) columns list the number of non-hydrogen atoms and hydrogen atoms in the chain respectively. The H(added) column lists the number of hydrogen atoms added and optimized by MolProbity. The Clashes column lists the number of clashes within the asymmetric unit, whereas Symm-Clashes lists symmetry-related clashes.

Mol	Chain	Non-H	H(model)	H(added)	Clashes	Symm-Clashes
1	A	834	0	816	16	0
1	B	849	0	825	39	0
2	C	43	0	27	1	0
2	D	43	0	27	1	0
3	A	1	0	0	0	0
4	A	4	0	8	0	0
4	B	4	0	8	0	0
5	B	1	0	0	0	0
6	A	39	0	0	4	0
6	B	32	0	0	1	0
6	C	1	0	0	0	0
6	D	2	0	0	0	0
All	All	1853	0	1711	54	0

The all-atom clashscore is defined as the number of clashes found per 1000 atoms (including hydrogen atoms). The all-atom clashscore for this structure is 16.

All (54) close contacts within the same asymmetric unit are listed below, sorted by their clash magnitude.

Atom-1	Atom-2	Interatomic distance (Å)	Clash overlap (Å)
1:B:54:GLU:HG2	1:B:55:MET:H	1.08	1.19
1:B:83:PHE:O	1:B:151:ILE:HG22	1.44	1.17
1:B:153:GLN:HB2	1:B:154:VAL:HA	1.13	1.08
1:A:101:PHE:CD1	1:A:146:ILE:HG12	1.93	1.01
1:A:141:SER:HB2	1:A:146:ILE:HD12	1.42	1.01
1:B:101:PHE:HD2	1:B:146:ILE:HG12	1.25	0.99
1:B:54:GLU:HG2	1:B:55:MET:N	1.72	0.99
1:B:153:GLN:CB	1:B:154:VAL:HA	1.94	0.97
1:B:83:PHE:O	1:B:151:ILE:CG2	2.21	0.88
1:B:101:PHE:CD2	1:B:146:ILE:HG12	2.07	0.88
1:A:101:PHE:CE1	1:A:146:ILE:HG12	2.11	0.85
1:B:112:ARG:NH2	1:B:116:GLY:O	2.13	0.81
1:B:121:TRP:CE3	1:B:121:TRP:CE2	2.65	0.78
1:B:62:PHE:HB3	1:B:65:ILE:HD13	1.67	0.76
1:B:153:GLN:HB2	1:B:154:VAL:CA	2.08	0.76
1:B:54:GLU:CG	1:B:55:MET:N	2.47	0.74
1:B:144:GLN:O	1:B:144:GLN:NE2	2.21	0.72
1:B:142:ARG:CG	1:B:142:ARG:HH11	2.06	0.69
6:A:322:HOH:O	1:B:130[A]:GLU:HG2	1.96	0.65
1:B:62:PHE:HB3	1:B:65:ILE:CD1	2.28	0.62
1:A:141:SER:HB2	1:A:146:ILE:CD1	2.25	0.61
1:B:142:ARG:HH11	1:B:142:ARG:HG2	1.64	0.61
6:A:322:HOH:O	1:B:130[A]:GLU:CG	2.49	0.60
1:B:101:PHE:HD2	1:B:146:ILE:CG1	2.09	0.59
1:B:144:GLN:HA	1:B:145:GLN:CB	2.35	0.56
1:B:112:ARG:HH21	1:B:116:GLY:C	2.04	0.55
1:A:58:HIS:CE1	6:A:302:HOH:O	2.62	0.52
1:B:153:GLN:CB	1:B:154:VAL:CA	2.78	0.50
1:B:55:MET:O	6:B:301:HOH:O	2.19	0.49
1:A:73:MET:CE	1:A:84:LEU:HD23	2.41	0.49
1:A:126:ASN:ND2	6:A:303:HOH:O	2.46	0.48
1:B:149:ARG:NH2	1:B:152:GLU:OE2	2.43	0.47
1:A:57:PRO:HB3	1:B:59:PRO:O	2.15	0.47
1:A:56:LYS:HB3	1:A:57:PRO:CD	2.44	0.47
1:A:73:MET:HE2	1:A:84:LEU:HD23	1.97	0.46
1:B:112:ARG:HD3	1:B:118:TYR:CE2	2.51	0.45
1:B:54:GLU:CG	1:B:55:MET:H	1.92	0.45
1:B:143:ASN:C	1:B:144:GLN:HG3	2.36	0.45
1:B:65:ILE:HG12	1:B:65:ILE:O	2.16	0.45
1:A:56:LYS:HB3	1:A:57:PRO:HD2	1.99	0.45
1:A:64:LYS:HE2	1:A:64:LYS:HB3	1.84	0.44
1:B:55:MET:O	1:B:56:LYS:O	2.36	0.44

*Continued on next page...*

Continued from previous page...

Atom-1	Atom-2	Interatomic distance (Å)	Clash overlap (Å)
1:B:136:ARG:HH11	1:B:136:ARG:HG2	1.83	0.44
1:B:144:GLN:HA	1:B:145:GLN:HB2	1.98	0.44
1:B:145:GLN:CG	1:B:145:GLN:O	2.66	0.44
1:B:109:LYS:HE3	2:D:2:PTR:CZ	2.48	0.43
1:B:121:TRP:HB2	1:B:122:VAL:H	1.68	0.43
1:A:121:TRP:CH2	2:C:4:ASN:HA	2.53	0.43
1:B:113:ASP:O	1:B:116:GLY:N	2.47	0.43
1:A:77:GLN:O	1:A:100:LYS:NZ	2.41	0.42
1:A:101:PHE:CD1	1:A:146:ILE:CG1	2.85	0.42
1:B:142:ARG:CG	1:B:142:ARG:NH1	2.71	0.42
1:A:109:LYS:HE3	1:A:111:LEU:HD21	2.01	0.41
1:B:145:GLN:O	1:B:145:GLN:HG3	2.21	0.40

There are no symmetry-related clashes.

## 5.3 Torsion angles [i](#)

### 5.3.1 Protein backbone [i](#)

In the following table, the Percentiles column shows the percent Ramachandran outliers of the chain as a percentile score with respect to all X-ray entries followed by that with respect to entries of similar resolution.

The Analysed column shows the number of residues for which the backbone conformation was analysed, and the total number of residues.

Mol	Chain	Analysed	Favoured	Allowed	Outliers	Percentiles	
1	A	99/117 (85%)	92 (93%)	5 (5%)	2 (2%)	7	3
1	B	101/117 (86%)	92 (91%)	5 (5%)	4 (4%)	3	1
All	All	200/234 (86%)	184 (92%)	10 (5%)	6 (3%)	4	1

All (6) Ramachandran outliers are listed below:

Mol	Chain	Res	Type
1	B	56	LYS
1	B	144	GLN
1	B	145	GLN
1	B	153	GLN
1	A	55	MET
1	A	102	GLY

### 5.3.2 Protein sidechains [i](#)

In the following table, the Percentiles column shows the percent sidechain outliers of the chain as a percentile score with respect to all X-ray entries followed by that with respect to entries of similar resolution.

The Analysed column shows the number of residues for which the sidechain conformation was analysed, and the total number of residues.

Mol	Chain	Analysed	Rotameric	Outliers	Percentiles	
1	A	90/105 (86%)	85 (94%)	5 (6%)	21	17
1	B	92/105 (88%)	79 (86%)	13 (14%)	3	1
2	C	1/1 (100%)	1 (100%)	0	100	100
2	D	1/1 (100%)	1 (100%)	0	100	100
All	All	184/212 (87%)	166 (90%)	18 (10%)	8	4

All (18) residues with a non-rotameric sidechain are listed below:

Mol	Chain	Res	Type
1	A	54	GLU
1	A	78	ARG
1	A	129	ASN
1	A	144	GLN
1	A	153	GLN
1	B	55	MET
1	B	65	ILE
1	B	78	ARG
1	B	80	ASP
1	B	121	TRP
1	B	129	ASN
1	B	142	ARG
1	B	144	GLN
1	B	145	GLN
1	B	146	ILE
1	B	151	ILE
1	B	153	GLN
1	B	154	VAL

Sometimes sidechains can be flipped to improve hydrogen bonding and reduce clashes. All (9) such sidechains are listed below:

Mol	Chain	Res	Type
1	A	79	HIS

*Continued on next page...*

*Continued from previous page...*

Mol	Chain	Res	Type
1	A	106	GLN
1	A	126	ASN
1	A	144	GLN
1	B	58	HIS
1	B	77	GLN
1	B	106	GLN
1	B	135	HIS
1	B	153	GLN

### 5.3.3 RNA [i](#)

There are no RNA molecules in this entry.

## 5.4 Non-standard residues in protein, DNA, RNA chains [i](#)

4 non-standard protein/DNA/RNA residues are modelled in this entry.

In the following table, the Counts columns list the number of bonds (or angles) for which Mogul statistics could be retrieved, the number of bonds (or angles) that are observed in the model and the number of bonds (or angles) that are defined in the Chemical Component Dictionary. The Link column lists molecule types, if any, to which the group is linked. The Z score for a bond length (or angle) is the number of standard deviations the observed value is removed from the expected value. A bond length (or angle) with  $|Z| > 2$  is considered an outlier worth inspection. RMSZ is the root-mean-square of all Z scores of the bond lengths (or angles).

Mol	Type	Chain	Res	Link	Bond lengths			Bond angles		
					Counts	RMSZ	# $ Z  > 2$	Counts	RMSZ	# $ Z  > 2$
2	PTR	C	2	2	15,16,17	1.30	2 (13%)	19,22,24	1.39	3 (15%)
2	02K	C	3	2	5,9,10	0.79	0	5,12,14	0.69	0
2	PTR	D	2	2	15,16,17	1.18	1 (6%)	19,22,24	1.88	5 (26%)
2	02K	D	3	2	5,9,10	0.92	0	5,12,14	0.97	0

In the following table, the Chirals column lists the number of chiral outliers, the number of chiral centers analysed, the number of these observed in the model and the number defined in the Chemical Component Dictionary. Similar counts are reported in the Torsion and Rings columns. '-' means no outliers of that kind were identified.

Mol	Type	Chain	Res	Link	Chirals	Torsions	Rings
2	PTR	C	2	2	-	0/10/11/13	0/1/1/1
2	02K	C	3	2	-	0/2/13/16	0/1/1/1
2	PTR	D	2	2	-	0/10/11/13	0/1/1/1
2	02K	D	3	2	-	0/2/13/16	0/1/1/1

All (3) bond length outliers are listed below:

Mol	Chain	Res	Type	Atoms	Z	Observed(Å)	Ideal(Å)
2	C	2	PTR	P-OH	-2.96	1.54	1.59
2	D	2	PTR	P-O1P	2.44	1.58	1.50
2	C	2	PTR	CD2-CG	2.23	1.43	1.38

All (8) bond angle outliers are listed below:

Mol	Chain	Res	Type	Atoms	Z	Observed(°)	Ideal(°)
2	D	2	PTR	O3P-P-OH	4.75	120.10	105.24
2	D	2	PTR	O3P-P-O2P	3.07	119.39	107.64
2	D	2	PTR	O2P-P-O1P	-2.84	99.54	110.68
2	C	2	PTR	OH-CZ-CE2	2.62	127.01	119.23
2	D	2	PTR	O2P-P-OH	-2.20	98.37	105.24
2	D	2	PTR	CG-CB-CA	-2.19	109.67	114.10
2	C	2	PTR	OH-CZ-CE1	-2.16	112.80	119.23
2	C	2	PTR	OH-P-O1P	2.07	117.12	109.31

There are no chirality outliers.

There are no torsion outliers.

There are no ring outliers.

1 monomer is involved in 1 short contact:

Mol	Chain	Res	Type	Clashes	Symm-Clashes
2	D	2	PTR	1	0

## 5.5 Carbohydrates [i](#)

There are no monosaccharides in this entry.

## 5.6 Ligand geometry [i](#)

Of 4 ligands modelled in this entry, 2 are monoatomic - leaving 2 for Mogul analysis.

In the following table, the Counts columns list the number of bonds (or angles) for which Mogul statistics could be retrieved, the number of bonds (or angles) that are observed in the model and the number of bonds (or angles) that are defined in the Chemical Component Dictionary. The Link column lists molecule types, if any, to which the group is linked. The Z score for a bond length (or angle) is the number of standard deviations the observed value is removed from the expected value. A bond length (or angle) with  $|Z| > 2$  is considered an outlier worth inspection. RMSZ is the root-mean-square of all Z scores of the bond lengths (or angles).

Mol	Type	Chain	Res	Link	Bond lengths			Bond angles		
					Counts	RMSZ	# Z  > 2	Counts	RMSZ	# Z  > 2
4	IPA	A	202	-	3,3,3	0.13	0	3,3,3	0.35	0
4	IPA	B	202	-	3,3,3	0.62	0	3,3,3	0.26	0

There are no bond length outliers.

There are no bond angle outliers.

There are no chirality outliers.

There are no torsion outliers.

There are no ring outliers.

No monomer is involved in short contacts.

## 5.7 Other polymers [i](#)

There are no such residues in this entry.

## 5.8 Polymer linkage issues [i](#)

There are no chain breaks in this entry.

## 6 Fit of model and data [i](#)

### 6.1 Protein, DNA and RNA chains [i](#)

In the following table, the column labelled ‘#RSRZ> 2’ contains the number (and percentage) of RSRZ outliers, followed by percent RSRZ outliers for the chain as percentile scores relative to all X-ray entries and entries of similar resolution. The OWAB column contains the minimum, median, 95<sup>th</sup> percentile and maximum values of the occupancy-weighted average B-factor per residue. The column labelled ‘Q< 0.9’ lists the number of (and percentage) of residues with an average occupancy less than 0.9.

Mol	Chain	Analysed	<RSRZ>	#RSRZ>2	OWAB(Å <sup>2</sup> )	Q<0.9
1	A	101/117 (86%)	-0.34	2 (1%) 65 63	16, 25, 46, 61	3 (2%)
1	B	101/117 (86%)	-0.22	2 (1%) 65 63	17, 30, 48, 59	1 (0%)
2	C	1/5 (20%)	-0.17	0 100 100	32, 32, 32, 32	0
2	D	1/5 (20%)	-0.67	0 100 100	32, 32, 32, 32	0
All	All	204/244 (83%)	-0.28	4 (1%) 65 63	16, 27, 48, 61	4 (1%)

All (4) RSRZ outliers are listed below:

Mol	Chain	Res	Type	RSRZ
1	A	154	VAL	7.0
1	A	55	MET	3.3
1	B	154	VAL	3.3
1	B	153	GLN	2.9

### 6.2 Non-standard residues in protein, DNA, RNA chains [i](#)

In the following table, the Atoms column lists the number of modelled atoms in the group and the number defined in the chemical component dictionary. The B-factors column lists the minimum, median, 95<sup>th</sup> percentile and maximum values of B factors of atoms in the group. The column labelled ‘Q< 0.9’ lists the number of atoms with occupancy less than 0.9.

Mol	Type	Chain	Res	Atoms	RSCC	RSR	B-factors(Å <sup>2</sup> )	Q<0.9
2	02K	C	3	9/10	0.93	0.12	23,27,31,40	0
2	02K	D	3	9/10	0.93	0.12	29,32,34,34	0
2	PTR	C	2	16/17	0.97	0.11	23,26,29,29	0
2	PTR	D	2	16/17	0.98	0.09	29,30,36,38	0



### 6.3 Carbohydrates [i](#)

There are no monosaccharides in this entry.

### 6.4 Ligands [i](#)

In the following table, the Atoms column lists the number of modelled atoms in the group and the number defined in the chemical component dictionary. The B-factors column lists the minimum, median, 95<sup>th</sup> percentile and maximum values of B factors of atoms in the group. The column labelled 'Q< 0.9' lists the number of atoms with occupancy less than 0.9.

Mol	Type	Chain	Res	Atoms	RSCC	RSR	B-factors(Å <sup>2</sup> )	Q<0.9
4	IPA	A	202	4/4	0.91	0.19	31,35,38,39	0
4	IPA	B	202	4/4	0.92	0.10	59,60,60,61	0
5	NA	B	201	1/1	0.98	0.12	19,19,19,19	0
3	CA	A	201	1/1	0.99	0.10	26,26,26,26	0

### 6.5 Other polymers [i](#)

There are no such residues in this entry.