



Full wwPDB X-ray Structure Validation Report ⓘ

Mar 9, 2024 – 08:39 AM EST

PDB ID : 3WQE
Title : D-threo-3-hydroxyaspartate dehydratase from *Delftia* sp. HT23 complexed with D-allothreonine
Authors : Yasutake, Y.; Matsumoto, Y.; Wada, M.
Deposited on : 2014-01-25
Resolution : 1.60 Å(reported)

This is a Full wwPDB X-ray Structure Validation Report for a publicly released PDB entry.

We welcome your comments at validation@mail.wwpdb.org

A user guide is available at

<https://www.wwpdb.org/validation/2017/XrayValidationReportHelp>

with specific help available everywhere you see the ⓘ symbol.

The types of validation reports are described at

<http://www.wwpdb.org/validation/2017/FAQs#types>.

The following versions of software and data (see [references ⓘ](#)) were used in the production of this report:

MolProbity : 4.02b-467
Mogul : 1.8.5 (274361), CSD as541be (2020)
Xtriage (Phenix) : 1.13
EDS : 2.36
Percentile statistics : 20191225.v01 (using entries in the PDB archive December 25th 2019)
Refmac : 5.8.0158
CCP4 : 7.0.044 (Gargrove)
Ideal geometry (proteins) : Engh & Huber (2001)
Ideal geometry (DNA, RNA) : Parkinson et al. (1996)
Validation Pipeline (wwPDB-VP) : 2.36

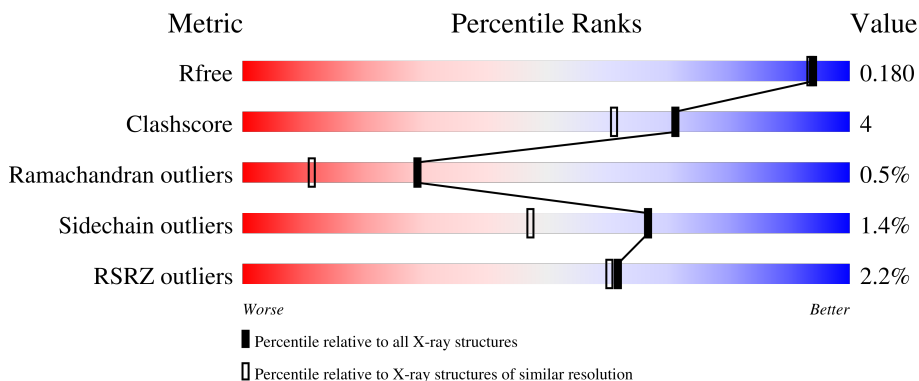
1 Overall quality at a glance

The following experimental techniques were used to determine the structure:

X-RAY DIFFRACTION


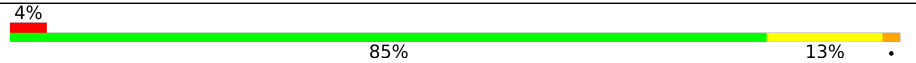
The reported resolution of this entry is 1.60 Å.

Percentile scores (ranging between 0-100) for global validation metrics of the entry are shown in the following graphic. The table shows the number of entries on which the scores are based.



Metric	Whole archive (#Entries)	Similar resolution (#Entries, resolution range(Å))
R_{free}	130704	3398 (1.60-1.60)
Clashscore	141614	3665 (1.60-1.60)
Ramachandran outliers	138981	3564 (1.60-1.60)
Sidechain outliers	138945	3563 (1.60-1.60)
RSRZ outliers	127900	3321 (1.60-1.60)

The table below summarises the geometric issues observed across the polymeric chains and their fit to the electron density. The red, orange, yellow and green segments of the lower bar indicate the fraction of residues that contain outliers for ≥ 3 , 2, 1 and 0 types of geometric quality criteria respectively. A grey segment represents the fraction of residues that are not modelled. The numeric value for each fraction is indicated below the corresponding segment, with a dot representing fractions $\leq 5\%$. The upper red bar (where present) indicates the fraction of residues that have poor fit to the electron density. The numeric value is given above the bar.

Mol	Chain	Length	Quality of chain
1	A	390	 84% 12% 4% 0% 0%
1	B	390	 85% 13% 2% 0% 0%

The following table lists non-polymeric compounds, carbohydrate monomers and non-standard residues in protein, DNA, RNA chains that are outliers for geometric or electron-density-fit criteria:

Mol	Type	Chain	Res	Chirality	Geometry	Clashes	Electron density
4	2TL	A	403	-	-	X	-

2 Entry composition i

There are 5 unique types of molecules in this entry. The entry contains 6505 atoms, of which 0 are hydrogens and 0 are deuteriums.

In the tables below, the ZeroOcc column contains the number of atoms modelled with zero occupancy, the AltConf column contains the number of residues with at least one atom in alternate conformation and the Trace column contains the number of residues modelled with at most 2 atoms.

- Molecule 1 is a protein called D-threo-3-hydroxyaspartate dehydratase.

Mol	Chain	Residues	Atoms					ZeroOcc	AltConf	Trace
			Total	C	N	O	S			
1	A	379	2862	1778	535	534	15	0	6	0
1	B	389	2940	1825	554	544	17	0	5	0

There are 20 discrepancies between the modelled and reference sequences:

Chain	Residue	Modelled	Actual	Comment	Reference
A	-9	GLY	-	expression tag	UNP B2DFG5
A	-8	HIS	-	expression tag	UNP B2DFG5
A	-7	HIS	-	expression tag	UNP B2DFG5
A	-6	HIS	-	expression tag	UNP B2DFG5
A	-5	HIS	-	expression tag	UNP B2DFG5
A	-4	HIS	-	expression tag	UNP B2DFG5
A	-3	HIS	-	expression tag	UNP B2DFG5
A	-2	ALA	-	expression tag	UNP B2DFG5
A	-1	MET	-	expression tag	UNP B2DFG5
A	0	SER	-	expression tag	UNP B2DFG5
B	-9	GLY	-	expression tag	UNP B2DFG5
B	-8	HIS	-	expression tag	UNP B2DFG5
B	-7	HIS	-	expression tag	UNP B2DFG5
B	-6	HIS	-	expression tag	UNP B2DFG5
B	-5	HIS	-	expression tag	UNP B2DFG5
B	-4	HIS	-	expression tag	UNP B2DFG5
B	-3	HIS	-	expression tag	UNP B2DFG5
B	-2	ALA	-	expression tag	UNP B2DFG5
B	-1	MET	-	expression tag	UNP B2DFG5
B	0	SER	-	expression tag	UNP B2DFG5

- Molecule 2 is PYRIDOXAL-5'-PHOSPHATE (three-letter code: PLP) (formula: C₈H₁₀NO₆P).

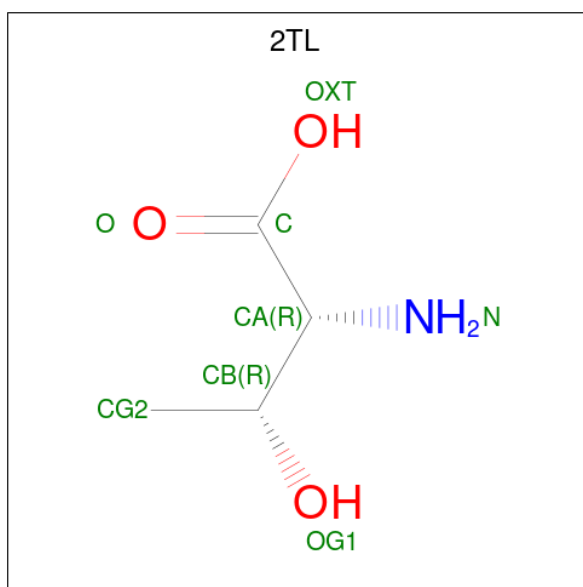


Mol	Chain	Residues	Atoms					ZeroOcc	AltConf
			Total	C	N	O	P		
2	A	1	15	8	1	5	1	0	0
2	B	1	15	8	1	5	1	0	0

- Molecule 3 is MAGNESIUM ION (three-letter code: MG) (formula: Mg).

Mol	Chain	Residues	Atoms		ZeroOcc	AltConf
			Total	Mg		
3	A	1	1	1	0	0
3	B	2	2	2	0	0

- Molecule 4 is D-allothreonine (three-letter code: 2TL) (formula: C₄H₉NO₃).



Mol	Chain	Residues	Atoms			ZeroOcc	AltConf	
			Total	C	N			O
4	A	1	8	4	1	3	0	0
4	B	1	8	4	1	3	0	0

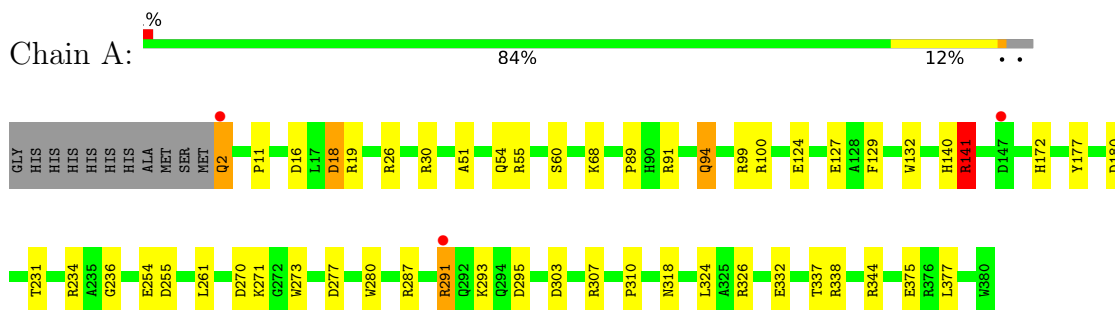
- Molecule 5 is water.

Mol	Chain	Residues	Atoms		ZeroOcc	AltConf
			Total	O		
5	A	334	334	334	0	0
5	B	320	320	320	0	0

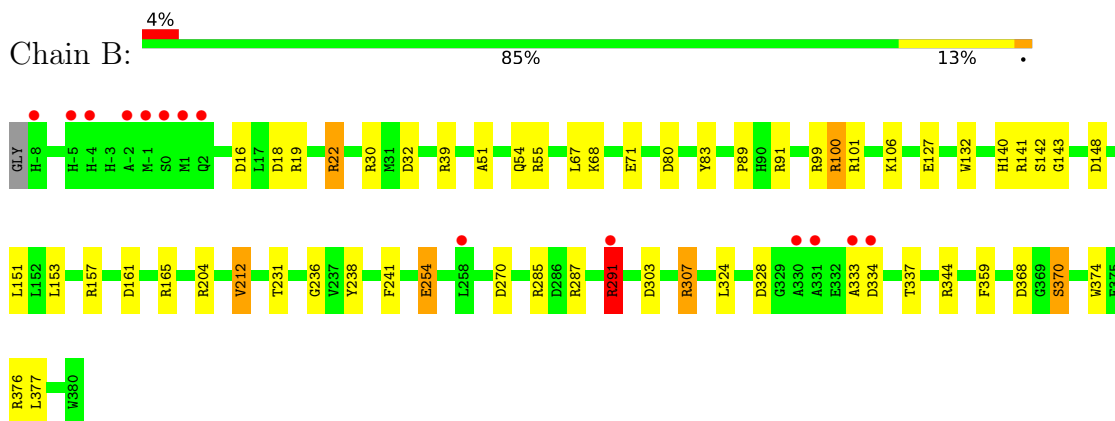
3 Residue-property plots [i](#)

These plots are drawn for all protein, RNA, DNA and oligosaccharide chains in the entry. The first graphic for a chain summarises the proportions of the various outlier classes displayed in the second graphic. The second graphic shows the sequence view annotated by issues in geometry and electron density. Residues are color-coded according to the number of geometric quality criteria for which they contain at least one outlier: green = 0, yellow = 1, orange = 2 and red = 3 or more. A red dot above a residue indicates a poor fit to the electron density ($RSRZ > 2$). Stretches of 2 or more consecutive residues without any outlier are shown as a green connector. Residues present in the sample, but not in the model, are shown in grey.

- Molecule 1: D-threo-3-hydroxyaspartate dehydratase



- Molecule 1: D-threo-3-hydroxyaspartate dehydratase



4 Data and refinement statistics i

Property	Value	Source
Space group	I 41 2 2	Depositor
Cell constants a, b, c, α , β , γ	157.98Å 157.98Å 158.86Å 90.00° 90.00° 90.00°	Depositor
Resolution (Å)	26.33 – 1.60 26.33 – 1.60	Depositor EDS
% Data completeness (in resolution range)	99.8 (26.33-1.60) 99.8 (26.33-1.60)	Depositor EDS
R_{merge}	0.09	Depositor
R_{sym}	(Not available)	Depositor
$\langle I/\sigma(I) \rangle$ ¹	7.10 (at 1.60Å)	Xtriage
Refinement program	REFMAC 5.6.0117	Depositor
R, R_{free}	0.166 , 0.182 0.163 , 0.180	Depositor DCC
R_{free} test set	6531 reflections (5.01%)	wwPDB-VP
Wilson B-factor (Å ²)	16.7	Xtriage
Anisotropy	0.019	Xtriage
Bulk solvent k_{sol} (e/Å ³), B_{sol} (Å ²)	0.40 , 48.9	EDS
L-test for twinning ²	$\langle L \rangle = 0.51$, $\langle L^2 \rangle = 0.34$	Xtriage
Estimated twinning fraction	0.000 for -l,-k,-h 0.005 for -h,l,k	Xtriage
F_o, F_c correlation	0.97	EDS
Total number of atoms	6505	wwPDB-VP
Average B, all atoms (Å ²)	22.0	wwPDB-VP

Xtriage's analysis on translational NCS is as follows: *The largest off-origin peak in the Patterson function is 2.73% of the height of the origin peak. No significant pseudotranslation is detected.*

¹Intensities estimated from amplitudes.

²Theoretical values of $\langle |L| \rangle$, $\langle L^2 \rangle$ for acentric reflections are 0.5, 0.333 respectively for untwinned datasets, and 0.375, 0.2 for perfectly twinned datasets.

5 Model quality i

5.1 Standard geometry i

Bond lengths and bond angles in the following residue types are not validated in this section: MG, 2TL, PLP

The Z score for a bond length (or angle) is the number of standard deviations the observed value is removed from the expected value. A bond length (or angle) with $|Z| > 5$ is considered an outlier worth inspection. RMSZ is the root-mean-square of all Z scores of the bond lengths (or angles).

Mol	Chain	Bond lengths		Bond angles	
		RMSZ	# Z >5	RMSZ	# Z >5
1	A	1.43	18/2927 (0.6%)	1.46	32/3970 (0.8%)
1	B	1.42	14/3008 (0.5%)	1.55	55/4078 (1.3%)
All	All	1.43	32/5935 (0.5%)	1.51	87/8048 (1.1%)

All (32) bond length outliers are listed below:

Mol	Chain	Res	Type	Atoms	Z	Observed(Å)	Ideal(Å)
1	B	141	ARG	CZ-NH2	10.95	1.47	1.33
1	B	285	ARG	CZ-NH2	7.96	1.43	1.33
1	A	338	ARG	CZ-NH2	7.74	1.43	1.33
1	A	318	ASN	CG-OD1	-7.62	1.07	1.24
1	A	124	GLU	CD-OE1	7.53	1.33	1.25
1	B	71	GLU	CD-OE1	7.20	1.33	1.25
1	A	141	ARG	CZ-NH1	7.12	1.42	1.33
1	B	55	ARG	CZ-NH2	7.02	1.42	1.33
1	B	254	GLU	CD-OE1	6.87	1.33	1.25
1	B	143	GLY	N-CA	6.81	1.56	1.46
1	A	141	ARG	CZ-NH2	6.77	1.41	1.33
1	A	127	GLU	CD-OE2	6.69	1.33	1.25
1	B	30	ARG	CZ-NH2	6.68	1.41	1.33
1	A	60	SER	CB-OG	-6.63	1.33	1.42
1	A	287	ARG	CZ-NH2	6.45	1.41	1.33
1	A	19	ARG	CZ-NH1	6.42	1.41	1.33
1	A	273	TRP	CD2-CE2	6.38	1.49	1.41
1	B	141	ARG	CB-CG	6.27	1.69	1.52
1	B	238	TYR	CE1-CZ	5.66	1.46	1.38
1	A	124	GLU	CD-OE2	5.55	1.31	1.25
1	A	307	ARG	N-CA	5.48	1.57	1.46
1	A	280	TRP	CE3-CZ3	5.45	1.47	1.38
1	A	132	TRP	CD2-CE2	5.40	1.47	1.41
1	B	204	ARG	CD-NE	-5.35	1.37	1.46

Continued on next page...

Continued from previous page...

Mol	Chain	Res	Type	Atoms	Z	Observed(Å)	Ideal(Å)
1	B	141	ARG	C-O	5.34	1.33	1.23
1	A	94[A]	GLN	CG-CD	5.19	1.62	1.51
1	A	94[B]	GLN	CG-CD	5.19	1.62	1.51
1	B	141	ARG	CZ-NH1	5.16	1.39	1.33
1	B	374	TRP	CD2-CE2	5.14	1.47	1.41
1	A	254	GLU	CD-OE2	5.09	1.31	1.25
1	B	204	ARG	CG-CD	5.02	1.64	1.51
1	A	375	GLU	CD-OE1	-5.01	1.20	1.25

All (87) bond angle outliers are listed below:

Mol	Chain	Res	Type	Atoms	Z	Observed(°)	Ideal(°)
1	A	19	ARG	NE-CZ-NH2	-16.76	111.92	120.30
1	A	338	ARG	NE-CZ-NH1	-16.45	112.08	120.30
1	B	100[A]	ARG	NE-CZ-NH1	-14.63	112.99	120.30
1	B	100[B]	ARG	NE-CZ-NH1	-14.63	112.99	120.30
1	B	100[A]	ARG	NE-CZ-NH2	14.47	127.53	120.30
1	B	100[B]	ARG	NE-CZ-NH2	14.47	127.53	120.30
1	B	30	ARG	NE-CZ-NH1	-13.59	113.50	120.30
1	B	16	ASP	CB-CG-OD1	13.09	130.08	118.30
1	B	55	ARG	NE-CZ-NH1	-12.51	114.05	120.30
1	A	16	ASP	CB-CG-OD1	10.46	127.71	118.30
1	A	99	ARG	NE-CZ-NH2	-10.28	115.16	120.30
1	A	344	ARG	NE-CZ-NH2	-10.14	115.23	120.30
1	B	55	ARG	NE-CZ-NH2	9.97	125.28	120.30
1	B	287	ARG	NE-CZ-NH1	-9.54	115.53	120.30
1	B	91	ARG	NE-CZ-NH1	9.36	124.98	120.30
1	B	91	ARG	NE-CZ-NH2	-9.18	115.71	120.30
1	B	19	ARG	NE-CZ-NH2	-9.03	115.79	120.30
1	A	55	ARG	NE-CZ-NH1	-8.63	115.99	120.30
1	A	26	ARG	NE-CZ-NH2	-8.61	116.00	120.30
1	A	18	ASP	CB-CG-OD2	8.53	125.98	118.30
1	B	165	ARG	NE-CZ-NH1	-8.46	116.07	120.30
1	A	19	ARG	NE-CZ-NH1	8.37	124.48	120.30
1	B	204	ARG	NE-CZ-NH2	-7.97	116.32	120.30
1	B	270	ASP	CB-CG-OD2	-7.87	111.21	118.30
1	B	99	ARG	NE-CZ-NH2	-7.86	116.37	120.30
1	B	30	ARG	NE-CZ-NH2	7.67	124.14	120.30
1	B	100[A]	ARG	CD-NE-CZ	7.65	134.32	123.60
1	B	100[B]	ARG	CD-NE-CZ	7.65	134.32	123.60
1	B	83	TYR	CB-CG-CD2	-7.33	116.61	121.00
1	A	234	ARG	NE-CZ-NH2	-7.31	116.64	120.30

Continued on next page...

Continued from previous page...

Mol	Chain	Res	Type	Atoms	Z	Observed(°)	Ideal(°)
1	A	295	ASP	CB-CG-OD2	-7.12	111.89	118.30
1	B	291	ARG	NE-CZ-NH2	-7.06	116.77	120.30
1	B	328	ASP	CB-CG-OD1	6.93	124.53	118.30
1	B	157	ARG	NE-CZ-NH2	-6.90	116.85	120.30
1	A	234	ARG	NE-CZ-NH1	6.72	123.66	120.30
1	A	18	ASP	CB-CG-OD1	-6.66	112.31	118.30
1	B	344	ARG	NE-CZ-NH2	-6.57	117.02	120.30
1	B	151	LEU	CB-CG-CD1	-6.55	99.87	111.00
1	B	143	GLY	N-CA-C	-6.51	96.83	113.10
1	B	370	SER	N-CA-CB	-6.34	100.98	110.50
1	B	32	ASP	CB-CG-OD2	-6.32	112.61	118.30
1	B	101	ARG	CG-CD-NE	6.30	125.03	111.80
1	B	19	ARG	NE-CZ-NH1	6.27	123.44	120.30
1	B	141	ARG	NE-CZ-NH2	6.27	123.44	120.30
1	B	80	ASP	CB-CG-OD1	6.26	123.94	118.30
1	A	277	ASP	CB-CG-OD2	-6.25	112.68	118.30
1	B	141	ARG	N-CA-C	-6.23	94.19	111.00
1	A	100	ARG	NE-CZ-NH1	-6.18	117.21	120.30
1	B	165	ARG	CG-CD-NE	-6.17	98.85	111.80
1	B	359	PHE	CB-CG-CD1	-6.12	116.52	120.80
1	A	16	ASP	OD1-CG-OD2	-6.12	111.68	123.30
1	B	231	THR	OG1-CB-CG2	-6.11	95.95	110.00
1	B	16	ASP	CB-CG-OD2	-6.10	112.81	118.30
1	A	303	ASP	CB-CG-OD2	-6.06	112.84	118.30
1	B	39	ARG	NE-CZ-NH1	5.85	123.22	120.30
1	A	310	PRO	C-N-CA	-5.83	110.06	122.30
1	B	83	TYR	CD1-CE1-CZ	-5.83	114.55	119.80
1	A	91	ARG	NE-CZ-NH1	5.82	123.21	120.30
1	B	285	ARG	NE-CZ-NH2	-5.74	117.43	120.30
1	B	141	ARG	CB-CA-C	5.70	121.81	110.40
1	B	376	ARG	NE-CZ-NH2	5.67	123.14	120.30
1	B	142	SER	N-CA-CB	-5.66	102.01	110.50
1	B	80	ASP	CB-CG-OD2	-5.55	113.30	118.30
1	B	285	ARG	NE-CZ-NH1	5.55	123.08	120.30
1	A	291	ARG	NE-CZ-NH1	5.54	123.07	120.30
1	A	324	LEU	CB-CG-CD1	-5.52	101.61	111.00
1	A	303	ASP	CB-CG-OD1	5.51	123.26	118.30
1	B	161	ASP	CB-CG-OD1	5.51	123.26	118.30
1	A	291	ARG	NE-CZ-NH2	-5.49	117.56	120.30
1	A	55	ARG	NE-CZ-NH2	5.44	123.02	120.30
1	B	106	LYS	CD-CE-NZ	-5.42	99.24	111.70
1	B	100[A]	ARG	CB-CG-CD	5.30	125.37	111.60

Continued on next page...

Continued from previous page...

Mol	Chain	Res	Type	Atoms	Z	Observed(°)	Ideal(°)
1	B	100[B]	ARG	CB-CG-CD	5.30	125.37	111.60
1	B	148	ASP	CB-CG-OD2	-5.27	113.55	118.30
1	A	338	ARG	NH1-CZ-NH2	5.21	125.14	119.40
1	A	141	ARG	NE-CZ-NH1	-5.20	117.70	120.30
1	A	307	ARG	CD-NE-CZ	-5.17	116.36	123.60
1	B	22	ARG	CG-CD-NE	-5.15	100.98	111.80
1	B	141	ARG	CA-CB-CG	5.14	124.70	113.40
1	B	212	VAL	CG1-CB-CG2	5.14	119.12	110.90
1	B	307	ARG	NE-CZ-NH2	5.14	122.87	120.30
1	A	177	TYR	CB-CG-CD2	-5.12	117.93	121.00
1	B	307	ARG	NE-CZ-NH1	-5.08	117.76	120.30
1	A	129	PHE	CG-CD2-CE2	-5.07	115.22	120.80
1	A	270	ASP	CB-CG-OD1	5.06	122.86	118.30
1	A	255	ASP	CB-CG-OD1	5.04	122.84	118.30
1	A	271	LYS	CA-CB-CG	-5.04	102.32	113.40

There are no chirality outliers.

There are no planarity outliers.

5.2 Too-close contacts [\(i\)](#)

In the following table, the Non-H and H(model) columns list the number of non-hydrogen atoms and hydrogen atoms in the chain respectively. The H(added) column lists the number of hydrogen atoms added and optimized by MolProbity. The Clashes column lists the number of clashes within the asymmetric unit, whereas Symm-Clashes lists symmetry-related clashes.

Mol	Chain	Non-H	H(model)	H(added)	Clashes	Symm-Clashes
1	A	2862	0	2869	14	0
1	B	2940	0	2932	26	0
2	A	15	0	6	1	0
2	B	15	0	6	0	0
3	A	1	0	0	0	0
3	B	2	0	0	0	0
4	A	8	0	6	4	0
4	B	8	0	6	3	0
5	A	334	0	0	4	0
5	B	320	0	0	2	0
All	All	6505	0	5825	41	0

The all-atom clashscore is defined as the number of clashes found per 1000 atoms (including hydrogen atoms). The all-atom clashscore for this structure is 4.

All (41) close contacts within the same asymmetric unit are listed below, sorted by their clash magnitude.

Atom-1	Atom-2	Interatomic distance (Å)	Clash overlap (Å)
1:B:291:ARG:HD2	1:B:291:ARG:H	1.32	0.94
1:B:18:ASP:HB3	1:B:22:ARG:NH2	1.84	0.93
1:A:231[B]:THR:HG22	5:A:788:HOH:O	1.88	0.72
1:B:368:ASP:OD1	1:B:370:SER:HB2	1.92	0.69
1:A:231[B]:THR:CG2	5:A:788:HOH:O	2.43	0.66
1:B:303:ASP:OD2	1:B:307:ARG:NH1	2.28	0.66
1:A:51:ALA:HA	1:A:54:GLN:HE21	1.61	0.66
1:B:68[A]:LYS:HG2	1:B:377:LEU:HD21	1.79	0.65
1:A:172:HIS:NE2	4:A:403:2TL:HG22	2.11	0.64
1:B:140:HIS:CE1	4:B:403:2TL:HG21	2.32	0.64
1:B:291:ARG:NH1	5:B:678:HOH:O	2.31	0.64
1:A:180:ASP:OD2	1:A:293:LYS:HE3	1.98	0.63
1:B:140:HIS:HE1	4:B:403:2TL:CG2	2.12	0.63
1:A:94[A]:GLN:HG3	5:A:647:HOH:O	1.99	0.62
1:B:291:ARG:HD2	1:B:291:ARG:N	2.09	0.62
1:A:337:THR:HG23	5:A:691:HOH:O	1.98	0.62
1:B:18:ASP:HB3	1:B:22:ARG:HH22	1.62	0.61
1:B:140:HIS:CE1	4:B:403:2TL:CG2	2.83	0.61
1:B:51:ALA:HA	1:B:54:GLN:HE21	1.65	0.61
1:A:68:LYS:HG2	1:A:377:LEU:HD21	1.89	0.55
1:B:100[B]:ARG:HG2	1:B:100[B]:ARG:HH11	1.71	0.55
1:B:254:GLU:HG3	5:B:758:HOH:O	2.09	0.53
1:B:334:ASP:HB3	1:B:337:THR:OG1	2.10	0.51
1:B:68[A]:LYS:CD	1:B:377:LEU:HD11	2.43	0.48
1:B:100[B]:ARG:HG2	1:B:100[B]:ARG:NH1	2.29	0.48
1:B:324:LEU:C	1:B:324:LEU:HD23	2.35	0.47
1:A:141:ARG:NH1	4:A:403:2TL:HG23	2.29	0.47
1:B:68[A]:LYS:HD3	1:B:377:LEU:HD11	1.96	0.47
1:A:326:ARG:HD2	1:A:332:GLU:OE1	2.15	0.47
1:B:100[B]:ARG:HH11	1:B:100[B]:ARG:CG	2.27	0.47
1:B:368:ASP:OD1	1:B:370:SER:CB	2.62	0.46
1:A:2:GLN:NE2	1:A:2:GLN:CA	2.79	0.44
1:B:68[A]:LYS:HE2	1:B:377:LEU:HD11	2.00	0.43
1:B:100[B]:ARG:NH1	1:B:127:GLU:OE2	2.48	0.43
1:A:2:GLN:HE21	1:A:2:GLN:C	2.23	0.41
1:B:132:TRP:CH2	1:B:212:VAL:HG11	2.56	0.41
1:B:333:ALA:O	1:B:334:ASP:C	2.58	0.41
1:A:11:PRO:HA	1:A:261:LEU:O	2.21	0.41
2:A:401:PLP:O3	4:A:403:2TL:N	2.52	0.41
1:B:67:LEU:HD23	1:B:67:LEU:HA	1.94	0.41

Continued on next page...

Continued from previous page...

Atom-1	Atom-2	Interatomic distance (Å)	Clash overlap (Å)
1:A:140:HIS:NE2	4:A:403:2TL:HG21	2.37	0.40

There are no symmetry-related clashes.

5.3 Torsion angles [i](#)

5.3.1 Protein backbone [i](#)

In the following table, the Percentiles column shows the percent Ramachandran outliers of the chain as a percentile score with respect to all X-ray entries followed by that with respect to entries of similar resolution.

The Analysed column shows the number of residues for which the backbone conformation was analysed, and the total number of residues.

Mol	Chain	Analysed	Favoured	Allowed	Outliers	Percentiles	
1	A	383/390 (98%)	377 (98%)	4 (1%)	2 (0%)	29	11
1	B	392/390 (100%)	384 (98%)	6 (2%)	2 (0%)	29	11
All	All	775/780 (99%)	761 (98%)	10 (1%)	4 (0%)	29	11

All (4) Ramachandran outliers are listed below:

Mol	Chain	Res	Type
1	A	141	ARG
1	B	241	PHE
1	A	236	GLY
1	B	236	GLY

5.3.2 Protein sidechains [i](#)

In the following table, the Percentiles column shows the percent sidechain outliers of the chain as a percentile score with respect to all X-ray entries followed by that with respect to entries of similar resolution.

The Analysed column shows the number of residues for which the sidechain conformation was analysed, and the total number of residues.

Mol	Chain	Analysed	Rotameric	Outliers	Percentiles	
1	A	286/289 (99%)	281 (98%)	5 (2%)	60	38

Continued on next page...

Continued from previous page...

Mol	Chain	Analysed	Rotameric	Outliers	Percentiles	
1	B	294/289 (102%)	291 (99%)	3 (1%)	76	61
All	All	580/578 (100%)	572 (99%)	8 (1%)	67	47

All (8) residues with a non-rotameric sidechain are listed below:

Mol	Chain	Res	Type
1	A	2	GLN
1	A	18	ASP
1	A	30	ARG
1	A	89	PRO
1	A	291	ARG
1	B	89	PRO
1	B	153	LEU
1	B	291	ARG

Sometimes sidechains can be flipped to improve hydrogen bonding and reduce clashes. All (4) such sidechains are listed below:

Mol	Chain	Res	Type
1	A	2	GLN
1	A	54	GLN
1	B	54	GLN
1	B	94	GLN

5.3.3 RNA [i](#)

There are no RNA molecules in this entry.

5.4 Non-standard residues in protein, DNA, RNA chains [i](#)

There are no non-standard protein/DNA/RNA residues in this entry.

5.5 Carbohydrates [i](#)

There are no monosaccharides in this entry.

5.6 Ligand geometry [i](#)

Of 7 ligands modelled in this entry, 3 are monoatomic - leaving 4 for Mogul analysis.

In the following table, the Counts columns list the number of bonds (or angles) for which Mogul statistics could be retrieved, the number of bonds (or angles) that are observed in the model and the number of bonds (or angles) that are defined in the Chemical Component Dictionary. The Link column lists molecule types, if any, to which the group is linked. The Z score for a bond length (or angle) is the number of standard deviations the observed value is removed from the expected value. A bond length (or angle) with $|Z| > 2$ is considered an outlier worth inspection. RMSZ is the root-mean-square of all Z scores of the bond lengths (or angles).

Mol	Type	Chain	Res	Link	Bond lengths			Bond angles		
					Counts	RMSZ	# Z > 2	Counts	RMSZ	# Z > 2
2	PLP	B	401	4	15,15,16	2.07	5 (33%)	20,22,23	1.74	5 (25%)
4	2TL	B	403	2	6,7,7	1.79	2 (33%)	7,9,9	1.92	2 (28%)
4	2TL	A	403	2	6,7,7	2.10	3 (50%)	7,9,9	2.94	3 (42%)
2	PLP	A	401	4	15,15,16	3.22	4 (26%)	20,22,23	1.74	8 (40%)

In the following table, the Chirals column lists the number of chiral outliers, the number of chiral centers analysed, the number of these observed in the model and the number defined in the Chemical Component Dictionary. Similar counts are reported in the Torsion and Rings columns. '-' means no outliers of that kind were identified.

Mol	Type	Chain	Res	Link	Chirals	Torsions	Rings
2	PLP	B	401	4	-	0/6/6/8	0/1/1/1
4	2TL	B	403	2	-	0/8/8/8	-
4	2TL	A	403	2	-	0/8/8/8	-
2	PLP	A	401	4	-	0/6/6/8	0/1/1/1

All (14) bond length outliers are listed below:

Mol	Chain	Res	Type	Atoms	Z	Observed(Å)	Ideal(Å)
2	A	401	PLP	C5-C4	10.51	1.52	1.40
2	B	401	PLP	C5-C4	4.69	1.45	1.40
2	A	401	PLP	C3-C2	4.58	1.45	1.40
2	B	401	PLP	C3-C2	3.42	1.44	1.40
4	B	403	2TL	OXT-C	-3.31	1.19	1.30
4	A	403	2TL	OXT-C	-3.19	1.20	1.30
2	A	401	PLP	C6-C5	3.15	1.44	1.37
4	A	403	2TL	CA-N	3.02	1.56	1.47
2	B	401	PLP	C4A-C4	-2.95	1.45	1.51
2	A	401	PLP	C3-C4	2.65	1.45	1.40
2	B	401	PLP	C6-C5	2.53	1.43	1.37
2	B	401	PLP	C6-N1	-2.44	1.29	1.34
4	A	403	2TL	CG2-CB	-2.14	1.45	1.51
4	B	403	2TL	CG2-CB	-2.05	1.45	1.51

All (18) bond angle outliers are listed below:

Mol	Chain	Res	Type	Atoms	Z	Observed(°)	Ideal(°)
4	A	403	2TL	OG1-CB-CA	5.36	120.51	109.04
4	A	403	2TL	OG1-CB-CG2	-4.94	95.11	109.74
4	B	403	2TL	CG2-CB-CA	3.66	120.81	112.16
2	A	401	PLP	C5-C6-N1	-3.23	118.44	123.82
2	B	401	PLP	O2P-P-O4P	-3.16	98.33	106.73
2	A	401	PLP	C6-N1-C2	2.93	124.59	119.17
2	B	401	PLP	O3P-P-O2P	2.67	117.84	107.64
2	A	401	PLP	C6-C5-C4	2.55	120.16	118.16
2	B	401	PLP	C4A-C4-C5	-2.43	118.43	120.94
2	A	401	PLP	C2A-C2-C3	-2.41	117.92	120.89
4	B	403	2TL	OXT-C-O	2.36	129.45	124.09
2	B	401	PLP	C2A-C2-C3	-2.34	118.00	120.89
4	A	403	2TL	CG2-CB-CA	2.20	117.36	112.16
2	B	401	PLP	C4-C3-C2	-2.19	116.83	120.07
2	A	401	PLP	O2P-P-O4P	-2.14	101.04	106.73
2	A	401	PLP	C4-C3-C2	-2.09	116.99	120.07
2	A	401	PLP	O3P-P-O2P	2.05	115.48	107.64
2	A	401	PLP	O3-C3-C4	2.01	123.39	118.10

There are no chirality outliers.

There are no torsion outliers.

There are no ring outliers.

3 monomers are involved in 7 short contacts:

Mol	Chain	Res	Type	Clashes	Symm-Clashes
4	B	403	2TL	3	0
4	A	403	2TL	4	0
2	A	401	PLP	1	0

5.7 Other polymers [i](#)

There are no such residues in this entry.

5.8 Polymer linkage issues [i](#)

There are no chain breaks in this entry.

6 Fit of model and data [i](#)

6.1 Protein, DNA and RNA chains [i](#)

In the following table, the column labelled ‘#RSRZ > 2’ contains the number (and percentage) of RSRZ outliers, followed by percent RSRZ outliers for the chain as percentile scores relative to all X-ray entries and entries of similar resolution. The OWAB column contains the minimum, median, 95th percentile and maximum values of the occupancy-weighted average B-factor per residue. The column labelled ‘Q < 0.9’ lists the number of (and percentage) of residues with an average occupancy less than 0.9.

Mol	Chain	Analysed	<RSRZ>	#RSRZ>2	OWAB(Å ²)	Q<0.9
1	A	379/390 (97%)	-0.24	3 (0%) 86 86	9, 19, 37, 58	0
1	B	389/390 (99%)	-0.14	14 (3%) 42 40	10, 19, 43, 82	0
All	All	768/780 (98%)	-0.19	17 (2%) 62 60	9, 19, 39, 82	0

All (17) RSRZ outliers are listed below:

Mol	Chain	Res	Type	RSRZ
1	A	2	GLN	6.7
1	B	-8	HIS	4.8
1	B	-1	MET	4.6
1	B	1	MET	4.2
1	B	331	ALA	3.9
1	A	291	ARG	3.8
1	B	291	ARG	3.7
1	B	-5	HIS	3.5
1	B	334	ASP	3.4
1	B	2	GLN	3.4
1	A	147	ASP	3.3
1	B	330	ALA	3.3
1	B	-4	HIS	3.0
1	B	0	SER	2.7
1	B	-2	ALA	2.6
1	B	333	ALA	2.3
1	B	258	LEU	2.1

6.2 Non-standard residues in protein, DNA, RNA chains [i](#)

There are no non-standard protein/DNA/RNA residues in this entry.

6.3 Carbohydrates [i](#)

There are no monosaccharides in this entry.

6.4 Ligands [i](#)

In the following table, the Atoms column lists the number of modelled atoms in the group and the number defined in the chemical component dictionary. The B-factors column lists the minimum, median, 95th percentile and maximum values of B factors of atoms in the group. The column labelled 'Q< 0.9' lists the number of atoms with occupancy less than 0.9.

Mol	Type	Chain	Res	Atoms	RSCC	RSR	B-factors(Å ²)	Q<0.9
4	2TL	B	403	8/8	0.96	0.07	14,17,18,27	0
4	2TL	A	403	8/8	0.97	0.07	17,18,23,33	0
2	PLP	A	401	15/16	0.97	0.10	14,16,18,19	0
3	MG	B	402	1/1	0.98	0.04	19,19,19,19	0
3	MG	B	404	1/1	0.98	0.23	17,17,17,17	1
2	PLP	B	401	15/16	0.98	0.07	13,13,18,18	0
3	MG	A	402	1/1	0.98	0.18	11,11,11,11	1

6.5 Other polymers [i](#)

There are no such residues in this entry.