



Full wwPDB X-ray Structure Validation Report ⓘ

May 14, 2020 – 03:35 pm BST

PDB ID : 3WQF
Title : D-threo-3-hydroxyaspartate dehydratase from *Delftia* sp. HT23 in the metal-free form
Authors : Yasutake, Y.; Matsumoto, Y.; Wada, M.
Deposited on : 2014-01-25
Resolution : 2.30 Å(reported)

This is a Full wwPDB X-ray Structure Validation Report for a publicly released PDB entry.

We welcome your comments at validation@mail.wwpdb.org

A user guide is available at

<https://www.wwpdb.org/validation/2017/XrayValidationReportHelp>

with specific help available everywhere you see the ⓘ symbol.

The following versions of software and data (see [references ⓘ](#)) were used in the production of this report:

MolProbity : 4.02b-467
Mogul : 1.8.5 (274361), CSD as541be (2020)
Xtriage (Phenix) : 1.13
EDS : 2.11
Percentile statistics : 20191225.v01 (using entries in the PDB archive December 25th 2019)
Refmac : 5.8.0158
CCP4 : 7.0.044 (Gargrove)
Ideal geometry (proteins) : Engh & Huber (2001)
Ideal geometry (DNA, RNA) : Parkinson et al. (1996)
Validation Pipeline (wwPDB-VP) : 2.11

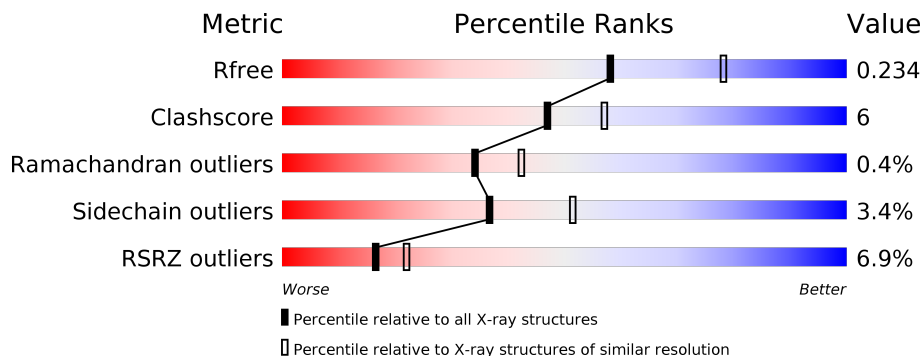
1 Overall quality at a glance

The following experimental techniques were used to determine the structure:

X-RAY DIFFRACTION

The reported resolution of this entry is 2.30 Å.

Percentile scores (ranging between 0-100) for global validation metrics of the entry are shown in the following graphic. The table shows the number of entries on which the scores are based.



Metric	Whole archive (#Entries)	Similar resolution (#Entries, resolution range(Å))
R_{free}	130704	5042 (2.30-2.30)
Clashscore	141614	5643 (2.30-2.30)
Ramachandran outliers	138981	5575 (2.30-2.30)
Sidechain outliers	138945	5575 (2.30-2.30)
RSRZ outliers	127900	4938 (2.30-2.30)

The table below summarises the geometric issues observed across the polymeric chains and their fit to the electron density. The red, orange, yellow and green segments on the lower bar indicate the fraction of residues that contain outliers for ≥ 3 , 2, 1 and 0 types of geometric quality criteria respectively. A grey segment represents the fraction of residues that are not modelled. The numeric value for each fraction is indicated below the corresponding segment, with a dot representing fractions $\leq 5\%$. The upper red bar (where present) indicates the fraction of residues that have poor fit to the electron density. The numeric value is given above the bar.

Mol	Chain	Length	Quality of chain
1	A	390	 2% 84% 12% ..
1	B	390	 12% 81% 15% ..

2 Entry composition i

There are 3 unique types of molecules in this entry. The entry contains 5893 atoms, of which 0 are hydrogens and 0 are deuteriums.

In the tables below, the ZeroOcc column contains the number of atoms modelled with zero occupancy, the AltConf column contains the number of residues with at least one atom in alternate conformation and the Trace column contains the number of residues modelled with at most 2 atoms.

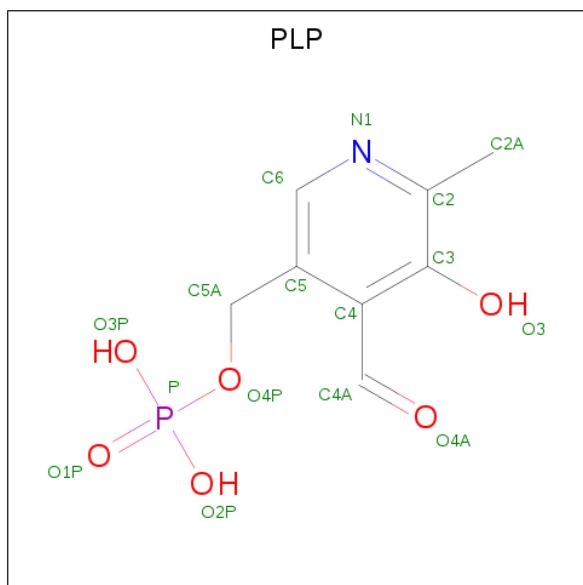
- Molecule 1 is a protein called D-threo-3-hydroxyaspartate dehydratase.

Mol	Chain	Residues	Atoms					ZeroOcc	AltConf	Trace
			Total	C	N	O	S			
1	A	378	2813	1747	522	529	15	0	0	0
1	B	379	2822	1752	524	531	15	0	0	0

There are 20 discrepancies between the modelled and reference sequences:

Chain	Residue	Modelled	Actual	Comment	Reference
A	-9	GLY	-	EXPRESSION TAG	UNP B2DFG5
A	-8	HIS	-	EXPRESSION TAG	UNP B2DFG5
A	-7	HIS	-	EXPRESSION TAG	UNP B2DFG5
A	-6	HIS	-	EXPRESSION TAG	UNP B2DFG5
A	-5	HIS	-	EXPRESSION TAG	UNP B2DFG5
A	-4	HIS	-	EXPRESSION TAG	UNP B2DFG5
A	-3	HIS	-	EXPRESSION TAG	UNP B2DFG5
A	-2	ALA	-	EXPRESSION TAG	UNP B2DFG5
A	-1	MET	-	EXPRESSION TAG	UNP B2DFG5
A	0	SER	-	EXPRESSION TAG	UNP B2DFG5
B	-9	GLY	-	EXPRESSION TAG	UNP B2DFG5
B	-8	HIS	-	EXPRESSION TAG	UNP B2DFG5
B	-7	HIS	-	EXPRESSION TAG	UNP B2DFG5
B	-6	HIS	-	EXPRESSION TAG	UNP B2DFG5
B	-5	HIS	-	EXPRESSION TAG	UNP B2DFG5
B	-4	HIS	-	EXPRESSION TAG	UNP B2DFG5
B	-3	HIS	-	EXPRESSION TAG	UNP B2DFG5
B	-2	ALA	-	EXPRESSION TAG	UNP B2DFG5
B	-1	MET	-	EXPRESSION TAG	UNP B2DFG5
B	0	SER	-	EXPRESSION TAG	UNP B2DFG5

- Molecule 2 is PYRIDOXAL-5'-PHOSPHATE (three-letter code: PLP) (formula: C₈H₁₀NO₆P).



Mol	Chain	Residues	Atoms					ZeroOcc	AltConf
			Total	C	N	O	P		
2	A	1	15	8	1	5	1	0	0
2	B	1	15	8	1	5	1	0	0

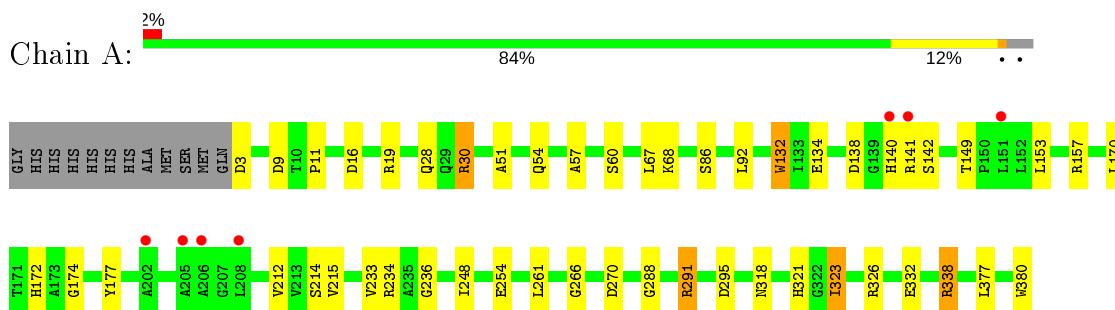
- Molecule 3 is water.

Mol	Chain	Residues	Atoms		ZeroOcc	AltConf
			Total	O		
3	A	123	123	123	0	0
3	B	105	105	105	0	0

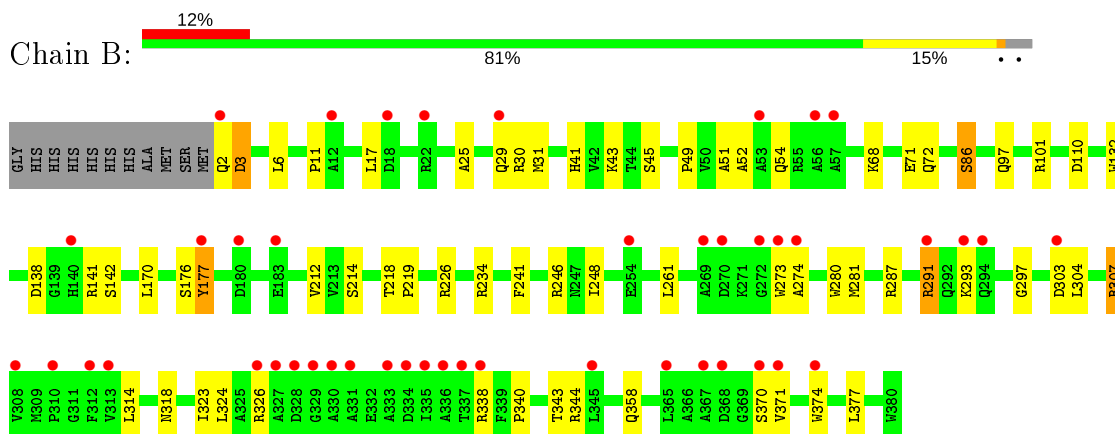
3 Residue-property plots [i](#)

These plots are drawn for all protein, RNA and DNA chains in the entry. The first graphic for a chain summarises the proportions of the various outlier classes displayed in the second graphic. The second graphic shows the sequence view annotated by issues in geometry and electron density. Residues are color-coded according to the number of geometric quality criteria for which they contain at least one outlier: green = 0, yellow = 1, orange = 2 and red = 3 or more. A red dot above a residue indicates a poor fit to the electron density ($RSRZ > 2$). Stretches of 2 or more consecutive residues without any outlier are shown as a green connector. Residues present in the sample, but not in the model, are shown in grey.

- Molecule 1: D-threo-3-hydroxyaspartate dehydratase



- Molecule 1: D-threo-3-hydroxyaspartate dehydratase



4 Data and refinement statistics

Property	Value	Source
Space group	I 41 2 2	Depositor
Cell constants a, b, c, α , β , γ	157.84Å 157.84Å 157.86Å 90.00° 90.00° 90.00°	Depositor
Resolution (Å)	49.92 – 2.30 49.92 – 2.30	Depositor EDS
% Data completeness (in resolution range)	99.9 (49.92-2.30) 100.0 (49.92-2.30)	Depositor EDS
R_{merge}	0.11	Depositor
R_{sym}	(Not available)	Depositor
$\langle I/\sigma(I) \rangle$ ¹	7.28 (at 2.29Å)	Xtriage
Refinement program	REFMAC 5.6.0117	Depositor
R, R_{free}	0.198 , 0.239 0.194 , 0.234	Depositor DCC
R_{free} test set	2210 reflections (4.98%)	wwPDB-VP
Wilson B-factor (Å ²)	34.4	Xtriage
Anisotropy	0.014	Xtriage
Bulk solvent k_{sol} (e/Å ³), B_{sol} (Å ²)	0.35 , 35.1	EDS
L-test for twinning ²	$\langle L \rangle = 0.51$, $\langle L^2 \rangle = 0.34$	Xtriage
Estimated twinning fraction	0.000 for -l,-k,-h 0.007 for -h,l,k	Xtriage
F_o, F_c correlation	0.95	EDS
Total number of atoms	5893	wwPDB-VP
Average B, all atoms (Å ²)	40.0	wwPDB-VP

Xtriage's analysis on translational NCS is as follows: *The largest off-origin peak in the Patterson function is 2.94% of the height of the origin peak. No significant pseudotranslation is detected.*

¹Intensities estimated from amplitudes.

²Theoretical values of $\langle |L| \rangle$, $\langle L^2 \rangle$ for acentric reflections are 0.5, 0.333 respectively for untwinned datasets, and 0.375, 0.2 for perfectly twinned datasets.

5 Model quality [i](#)

5.1 Standard geometry [i](#)

Bond lengths and bond angles in the following residue types are not validated in this section: PLP

The Z score for a bond length (or angle) is the number of standard deviations the observed value is removed from the expected value. A bond length (or angle) with $|Z| > 5$ is considered an outlier worth inspection. RMSZ is the root-mean-square of all Z scores of the bond lengths (or angles).

Mol	Chain	Bond lengths		Bond angles	
		RMSZ	# Z >5	RMSZ	# Z >5
1	A	0.92	4/2860 (0.1%)	0.95	5/3882 (0.1%)
1	B	0.93	3/2869 (0.1%)	0.94	5/3894 (0.1%)
All	All	0.93	7/5729 (0.1%)	0.95	10/7776 (0.1%)

All (7) bond length outliers are listed below:

Mol	Chain	Res	Type	Atoms	Z	Observed(Å)	Ideal(Å)
1	A	132	TRP	CD2-CE2	5.90	1.48	1.41
1	B	374	TRP	CD2-CE2	5.75	1.48	1.41
1	B	280	TRP	CD2-CE2	5.69	1.48	1.41
1	A	380	TRP	CD2-CE2	5.28	1.47	1.41
1	B	273	TRP	CD2-CE2	5.24	1.47	1.41
1	A	19	ARG	CZ-NH1	5.18	1.39	1.33
1	A	9	ASP	CB-CG	5.03	1.62	1.51

All (10) bond angle outliers are listed below:

Mol	Chain	Res	Type	Atoms	Z	Observed(°)	Ideal(°)
1	A	295	ASP	CB-CG-OD1	8.06	125.56	118.30
1	B	138	ASP	CB-CG-OD1	7.05	124.65	118.30
1	B	110	ASP	CB-CG-OD1	6.38	124.05	118.30
1	A	16	ASP	CB-CG-OD1	6.37	124.03	118.30
1	A	321	HIS	CB-CA-C	-6.32	97.75	110.40
1	B	234	ARG	NE-CZ-NH2	-5.98	117.31	120.30
1	A	19	ARG	NE-CZ-NH2	-5.77	117.42	120.30
1	B	86	SER	N-CA-CB	5.47	118.71	110.50
1	B	31	MET	CG-SD-CE	5.16	108.45	100.20
1	A	295	ASP	CB-CG-OD2	-5.14	113.67	118.30

There are no chirality outliers.

There are no planarity outliers.

5.2 Too-close contacts

In the following table, the Non-H and H(model) columns list the number of non-hydrogen atoms and hydrogen atoms in the chain respectively. The H(added) column lists the number of hydrogen atoms added and optimized by MolProbity. The Clashes column lists the number of clashes within the asymmetric unit, whereas Symm-Clashes lists symmetry related clashes.

Mol	Chain	Non-H	H(model)	H(added)	Clashes	Symm-Clashes
1	A	2813	0	2798	34	0
1	B	2822	0	2806	37	0
2	A	15	0	6	0	0
2	B	15	0	6	0	0
3	A	123	0	0	3	0
3	B	105	0	0	4	0
All	All	5893	0	5616	70	0

The all-atom clashscore is defined as the number of clashes found per 1000 atoms (including hydrogen atoms). The all-atom clashscore for this structure is 6.

All (70) close contacts within the same asymmetric unit are listed below, sorted by their clash magnitude.

Atom-1	Atom-2	Interatomic distance (Å)	Clash overlap (Å)
1:B:177:TYR:HA	1:B:248:ILE:HD11	1.44	0.98
1:B:25:ALA:O	1:B:29:GLN:HG3	1.66	0.95
1:A:30:ARG:HH11	1:A:30:ARG:CG	1.93	0.81
1:A:30:ARG:HH11	1:A:30:ARG:HA	1.49	0.77
1:B:177:TYR:CD1	1:B:177:TYR:N	2.54	0.75
1:A:30:ARG:HH11	1:A:30:ARG:HG3	1.51	0.75
1:A:30:ARG:NH1	1:A:30:ARG:HG3	2.02	0.75
1:B:177:TYR:HD1	1:B:177:TYR:N	1.85	0.74
1:B:177:TYR:HA	1:B:248:ILE:CD1	2.17	0.74
1:A:30:ARG:HH11	1:A:30:ARG:CA	2.02	0.72
1:B:307:ARG:HH11	1:B:307:ARG:HB2	1.52	0.72
1:A:30:ARG:NH1	1:A:30:ARG:HA	2.06	0.70
1:B:177:TYR:H	1:B:177:TYR:HD1	1.41	0.68
1:A:157:ARG:HD2	3:A:539:HOH:O	1.95	0.67
1:A:51:ALA:HA	1:A:54:GLN:HE21	1.58	0.66
1:B:71:GLU:CG	3:B:561:HOH:O	2.43	0.65
1:B:287:ARG:CZ	1:B:297:GLY:HA2	2.27	0.65
1:B:326:ARG:HD2	3:B:543:HOH:O	1.95	0.65

Continued on next page...

Continued from previous page...

Atom-1	Atom-2	Interatomic distance (Å)	Clash overlap (Å)
1:B:6:LEU:CD2	1:B:304:LEU:HD21	2.28	0.64
1:B:6:LEU:HD21	1:B:304:LEU:HD21	1.80	0.64
1:A:30:ARG:CB	1:A:30:ARG:HH11	2.11	0.63
1:B:51:ALA:HA	1:B:54:GLN:HE21	1.62	0.63
1:A:30:ARG:NH1	1:A:30:ARG:CG	2.59	0.62
1:B:218:THR:HB	1:B:219:PRO:HD3	1.85	0.57
1:B:97:GLN:O	1:B:101:ARG:HG3	2.05	0.56
1:B:291:ARG:HD2	1:B:291:ARG:H	1.71	0.56
1:B:303:ASP:OD2	1:B:307:ARG:NH1	2.40	0.54
1:B:132:TRP:CH2	1:B:212:VAL:HG11	2.43	0.53
1:A:270:ASP:HB2	3:A:617:HOH:O	2.08	0.53
1:A:338:ARG:HD2	3:A:516:HOH:O	2.07	0.53
1:B:287:ARG:NH1	1:B:297:GLY:HA2	2.24	0.53
1:A:68:LYS:HD3	1:A:377:LEU:HD21	1.91	0.52
1:B:274:ALA:HB3	1:B:324:LEU:HB3	1.91	0.52
1:B:71:GLU:HG2	3:B:561:HOH:O	2.05	0.51
1:B:72:GLN:OE1	1:B:377:LEU:HD13	2.10	0.51
1:A:326:ARG:HD2	1:A:332:GLU:OE1	2.10	0.51
1:B:141:ARG:HG2	1:B:142:SER:H	1.76	0.50
1:A:153:LEU:O	1:A:157:ARG:HG3	2.12	0.49
1:A:254:GLU:H	1:A:254:GLU:CD	2.15	0.49
1:A:132:TRP:CH2	1:A:212:VAL:HG11	2.48	0.48
1:B:41:HIS:CE1	1:B:43:LYS:HB3	2.50	0.47
1:A:318:ASN:OD1	1:B:141:ARG:CD	2.63	0.47
1:A:332:GLU:OE2	1:A:338:ARG:NH2	2.42	0.47
1:A:11:PRO:HA	1:A:261:LEU:O	2.15	0.47
1:A:288:GLY:O	1:A:291:ARG:HG2	2.14	0.47
1:B:338:ARG:HG3	1:B:338:ARG:HH11	1.80	0.46
1:B:314:LEU:HA	1:B:323:ILE:O	2.16	0.46
1:B:68:LYS:HG2	1:B:377:LEU:HD21	1.99	0.45
1:A:172:HIS:HB2	1:A:234:ARG:NH2	2.32	0.45
1:A:177:TYR:HA	1:A:248:ILE:HD11	1.98	0.45
1:A:266:GLY:HA3	3:B:545:HOH:O	2.16	0.45
1:A:67:LEU:HA	1:A:67:LEU:HD23	1.81	0.45
1:B:11:PRO:HA	1:B:261:LEU:O	2.16	0.44
1:A:149:THR:HG22	1:A:153:LEU:HG	1.99	0.44
1:B:3:ASP:O	1:B:371:VAL:HG22	2.18	0.44
1:A:28:GLN:HG2	1:A:57:ALA:O	2.18	0.44
1:B:246:ARG:C	1:B:246:ARG:HD3	2.38	0.44
1:B:49:PRO:O	1:B:52:ALA:HB3	2.19	0.43
1:A:138:ASP:OD1	1:A:140:HIS:HB3	2.19	0.43

Continued on next page...

Continued from previous page...

Atom-1	Atom-2	Interatomic distance (Å)	Clash overlap (Å)
1:B:340:PRO:O	1:B:343:THR:OG1	2.27	0.42
1:A:134:GLU:OE2	1:A:142:SER:HB2	2.19	0.42
1:B:2:GLN:HG3	1:B:370:SER:HB2	2.02	0.42
1:B:281:MET:O	1:B:358:GLN:HG3	2.19	0.42
1:A:170:LEU:HA	1:A:214:SER:O	2.20	0.42
1:A:215:VAL:O	1:A:233:VAL:HA	2.20	0.42
1:A:323:ILE:CD1	1:A:323:ILE:N	2.82	0.41
1:A:140:HIS:CD2	1:A:174:GLY:HA3	2.56	0.41
1:B:17:LEU:HD23	1:B:17:LEU:HA	1.95	0.41
1:A:92:LEU:HA	1:A:92:LEU:HD23	1.91	0.41
1:B:170:LEU:HA	1:B:214:SER:O	2.21	0.40

There are no symmetry-related clashes.

5.3 Torsion angles [i](#)

5.3.1 Protein backbone [i](#)

In the following table, the Percentiles column shows the percent Ramachandran outliers of the chain as a percentile score with respect to all X-ray entries followed by that with respect to entries of similar resolution.

The Analysed column shows the number of residues for which the backbone conformation was analysed, and the total number of residues.

Mol	Chain	Analysed	Favoured	Allowed	Outliers	Percentiles	
1	A	376/390 (96%)	369 (98%)	5 (1%)	2 (0%)	29	35
1	B	377/390 (97%)	362 (96%)	14 (4%)	1 (0%)	41	50
All	All	753/780 (96%)	731 (97%)	19 (2%)	3 (0%)	34	42

All (3) Ramachandran outliers are listed below:

Mol	Chain	Res	Type
1	A	141	ARG
1	B	241	PHE
1	A	236	GLY

5.3.2 Protein sidechains [i](#)

In the following table, the Percentiles column shows the percent sidechain outliers of the chain as a percentile score with respect to all X-ray entries followed by that with respect to entries of similar resolution.

The Analysed column shows the number of residues for which the sidechain conformation was analysed, and the total number of residues.

Mol	Chain	Analysed	Rotameric	Outliers	Percentiles	
1	A	279/289 (96%)	272 (98%)	7 (2%)	47	65
1	B	280/289 (97%)	268 (96%)	12 (4%)	29	40
All	All	559/578 (97%)	540 (97%)	19 (3%)	37	51

All (19) residues with a non-rotameric sidechain are listed below:

Mol	Chain	Res	Type
1	A	3	ASP
1	A	30	ARG
1	A	60	SER
1	A	86	SER
1	A	291	ARG
1	A	323	ILE
1	A	338	ARG
1	B	3	ASP
1	B	30	ARG
1	B	45	SER
1	B	86	SER
1	B	176	SER
1	B	177	TYR
1	B	226	ARG
1	B	291	ARG
1	B	293	LYS
1	B	307	ARG
1	B	318	ASN
1	B	344	ARG

Some sidechains can be flipped to improve hydrogen bonding and reduce clashes. All (3) such sidechains are listed below:

Mol	Chain	Res	Type
1	A	54	GLN
1	A	94	GLN
1	B	54	GLN

5.3.3 RNA [i](#)

There are no RNA molecules in this entry.

5.4 Non-standard residues in protein, DNA, RNA chains [i](#)

There are no non-standard protein/DNA/RNA residues in this entry.

5.5 Carbohydrates [i](#)

There are no carbohydrates in this entry.

5.6 Ligand geometry [i](#)

2 ligands are modelled in this entry.

In the following table, the Counts columns list the number of bonds (or angles) for which Mogul statistics could be retrieved, the number of bonds (or angles) that are observed in the model and the number of bonds (or angles) that are defined in the Chemical Component Dictionary. The Link column lists molecule types, if any, to which the group is linked. The Z score for a bond length (or angle) is the number of standard deviations the observed value is removed from the expected value. A bond length (or angle) with $|Z| > 2$ is considered an outlier worth inspection. RMSZ is the root-mean-square of all Z scores of the bond lengths (or angles).

Mol	Type	Chain	Res	Link	Bond lengths			Bond angles		
					Counts	RMSZ	# Z > 2	Counts	RMSZ	# Z > 2
2	PLP	B	401	1	15,15,16	3.27	3 (20%)	20,22,23	1.40	3 (15%)
2	PLP	A	401	1	15,15,16	3.51	6 (40%)	20,22,23	2.14	8 (40%)

In the following table, the Chirals column lists the number of chiral outliers, the number of chiral centers analysed, the number of these observed in the model and the number defined in the Chemical Component Dictionary. Similar counts are reported in the Torsion and Rings columns. '-' means no outliers of that kind were identified.

Mol	Type	Chain	Res	Link	Chirals	Torsions	Rings
2	PLP	B	401	1	-	3/6/6/8	0/1/1/1
2	PLP	A	401	1	-	3/6/6/8	0/1/1/1

All (9) bond length outliers are listed below:

Mol	Chain	Res	Type	Atoms	Z	Observed(Å)	Ideal(Å)
2	A	401	PLP	C3-C2	9.73	1.50	1.40

Continued on next page...

Continued from previous page...

Mol	Chain	Res	Type	Atoms	Z	Observed(Å)	Ideal(Å)
2	B	401	PLP	C3-C2	8.86	1.49	1.40
2	B	401	PLP	C5-C4	7.60	1.48	1.40
2	A	401	PLP	C5-C4	6.42	1.47	1.40
2	A	401	PLP	C3-C4	4.26	1.49	1.40
2	B	401	PLP	C3-C4	3.84	1.48	1.40
2	A	401	PLP	C4A-C4	-2.82	1.45	1.51
2	A	401	PLP	P-O3P	-2.44	1.45	1.54
2	A	401	PLP	C6-N1	2.27	1.39	1.34

All (11) bond angle outliers are listed below:

Mol	Chain	Res	Type	Atoms	Z	Observed(°)	Ideal(°)
2	A	401	PLP	C5A-C5-C6	4.45	126.69	119.37
2	A	401	PLP	C3-C2-N1	-3.57	116.15	120.77
2	A	401	PLP	O3P-P-O4P	-3.36	97.78	106.73
2	A	401	PLP	C6-N1-C2	3.18	125.06	119.17
2	B	401	PLP	O3P-P-O4P	-3.15	98.34	106.73
2	A	401	PLP	O3P-P-O2P	2.99	119.06	107.64
2	A	401	PLP	C6-C5-C4	-2.71	116.03	118.16
2	A	401	PLP	C4A-C4-C5	-2.62	118.24	120.94
2	B	401	PLP	O2P-P-O1P	2.60	120.87	110.68
2	B	401	PLP	C6-N1-C2	2.18	123.21	119.17
2	A	401	PLP	C2A-C2-N1	2.10	121.76	117.67

There are no chirality outliers.

All (6) torsion outliers are listed below:

Mol	Chain	Res	Type	Atoms
2	B	401	PLP	C5A-O4P-P-O1P
2	B	401	PLP	C5A-O4P-P-O2P
2	B	401	PLP	C5A-O4P-P-O3P
2	A	401	PLP	C5A-O4P-P-O2P
2	A	401	PLP	C5A-O4P-P-O3P
2	A	401	PLP	C5A-O4P-P-O1P

There are no ring outliers.

No monomer is involved in short contacts.

5.7 Other polymers [i](#)

There are no such residues in this entry.

5.8 Polymer linkage issues [i](#)

There are no chain breaks in this entry.

6 Fit of model and data

6.1 Protein, DNA and RNA chains

In the following table, the column labelled ‘#RSRZ> 2’ contains the number (and percentage) of RSRZ outliers, followed by percent RSRZ outliers for the chain as percentile scores relative to all X-ray entries and entries of similar resolution. The OWAB column contains the minimum, median, 95th percentile and maximum values of the occupancy-weighted average B-factor per residue. The column labelled ‘Q< 0.9’ lists the number of (and percentage) of residues with an average occupancy less than 0.9.

Mol	Chain	Analysed	<RSRZ>	#RSRZ>2	OWAB(Å ²)	Q<0.9
1	A	378/390 (96%)	0.00	7 (1%) 66 73	19, 32, 60, 78	0
1	B	379/390 (97%)	0.43	45 (11%) 4 6	18, 45, 73, 89	0
All	All	757/780 (97%)	0.22	52 (6%) 16 22	18, 39, 68, 89	0

All (52) RSRZ outliers are listed below:

Mol	Chain	Res	Type	RSRZ
1	B	330	ALA	6.3
1	B	333	ALA	5.7
1	B	2	GLN	4.7
1	B	370	SER	4.6
1	B	371	VAL	4.6
1	B	329	GLY	4.5
1	B	331	ALA	4.4
1	B	367	ALA	4.0
1	B	272	GLY	3.9
1	B	291	ARG	3.8
1	A	140	HIS	3.8
1	B	57	ALA	3.7
1	A	202	ALA	3.7
1	B	337	THR	3.6
1	B	270	ASP	3.5
1	B	328	ASP	3.5
1	B	269	ALA	3.4
1	B	327	ALA	3.2
1	B	334	ASP	3.2
1	B	177	TYR	3.0
1	B	303	ASP	2.9
1	B	29	GLN	2.8
1	B	326	ARG	2.8
1	B	345	LEU	2.8

Continued on next page...

Continued from previous page...

Mol	Chain	Res	Type	RSRZ
1	B	56	ALA	2.7
1	A	151	LEU	2.6
1	A	205	ALA	2.6
1	B	12	ALA	2.6
1	B	365	LEU	2.6
1	B	273	TRP	2.4
1	A	141	ARG	2.4
1	B	336	ALA	2.4
1	B	335	ILE	2.4
1	B	22	ARG	2.4
1	B	274	ALA	2.4
1	B	312	PHE	2.3
1	A	208	LEU	2.2
1	B	254	GLU	2.2
1	B	368	ASP	2.2
1	B	293	LYS	2.2
1	B	294	GLN	2.2
1	B	308	VAL	2.1
1	B	313	VAL	2.1
1	B	183	GLU	2.1
1	B	338	ARG	2.1
1	B	310	PRO	2.1
1	B	53	ALA	2.0
1	B	374	TRP	2.0
1	A	206	ALA	2.0
1	B	18	ASP	2.0
1	B	180	ASP	2.0
1	B	140	HIS	2.0

6.2 Non-standard residues in protein, DNA, RNA chains [i](#)

There are no non-standard protein/DNA/RNA residues in this entry.

6.3 Carbohydrates [i](#)

There are no carbohydrates in this entry.

6.4 Ligands [i](#)

In the following table, the Atoms column lists the number of modelled atoms in the group and the number defined in the chemical component dictionary. The B-factors column lists the minimum,

median, 95th percentile and maximum values of B factors of atoms in the group. The column labelled 'Q< 0.9' lists the number of atoms with occupancy less than 0.9.

Mol	Type	Chain	Res	Atoms	RSCC	RSR	B-factors(Å ²)	Q<0.9
2	PLP	B	401	15/16	0.96	0.10	33,38,45,46	0
2	PLP	A	401	15/16	0.99	0.12	26,28,30,31	0

6.5 Other polymers [i](#)

There are no such residues in this entry.