



Full wwPDB X-ray Structure Validation Report ⓘ

Jun 19, 2024 – 09:48 AM EDT

PDB ID : 3WQJ
Title : Crystal structure of archaerhodopsin-2 at 1.8 angstrom resolution
Authors : Kouyama, T.
Deposited on : 2014-01-27
Resolution : 1.80 Å(reported)

This is a Full wwPDB X-ray Structure Validation Report for a publicly released PDB entry.

We welcome your comments at validation@mail.wwpdb.org

A user guide is available at

<https://www.wwpdb.org/validation/2017/XrayValidationReportHelp>

with specific help available everywhere you see the ⓘ symbol.

The types of validation reports are described at

<http://www.wwpdb.org/validation/2017/FAQs#types>.

The following versions of software and data (see [references ⓘ](#)) were used in the production of this report:

MolProbity : 4.02b-467
Mogul : 2022.3.0, CSD as543be (2022)
Xtriage (Phenix) : 1.20.1
EDS : 2.37.1
buster-report : 1.1.7 (2018)
Percentile statistics : 20191225.v01 (using entries in the PDB archive December 25th 2019)
Refmac : 5.8.0158
CCP4 : 7.0.044 (Gargrove)
Ideal geometry (proteins) : Engh & Huber (2001)
Ideal geometry (DNA, RNA) : Parkinson et al. (1996)
Validation Pipeline (wwPDB-VP) : 2.37.1

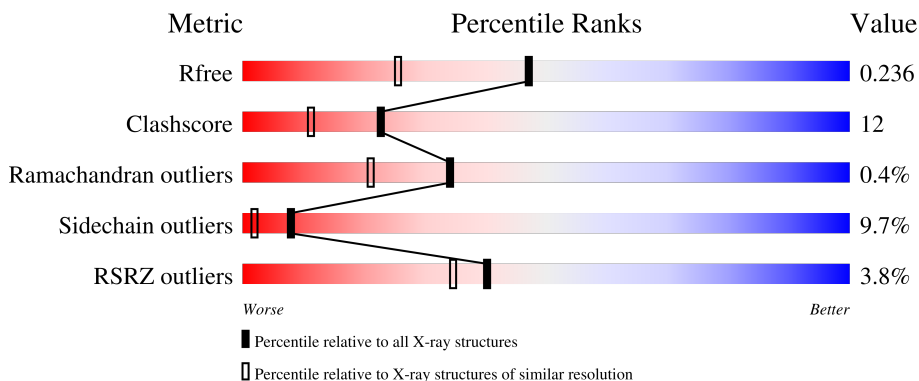
1 Overall quality at a glance i

The following experimental techniques were used to determine the structure:

X-RAY DIFFRACTION

The reported resolution of this entry is 1.80 Å.

Percentile scores (ranging between 0-100) for global validation metrics of the entry are shown in the following graphic. The table shows the number of entries on which the scores are based.



Metric	Whole archive (#Entries)	Similar resolution (#Entries, resolution range(Å))
R_{free}	130704	5950 (1.80-1.80)
Clashscore	141614	6793 (1.80-1.80)
Ramachandran outliers	138981	6697 (1.80-1.80)
Sidechain outliers	138945	6696 (1.80-1.80)
RSRZ outliers	127900	5850 (1.80-1.80)

The table below summarises the geometric issues observed across the polymeric chains and their fit to the electron density. The red, orange, yellow and green segments of the lower bar indicate the fraction of residues that contain outliers for ≥ 3 , 2, 1 and 0 types of geometric quality criteria respectively. A grey segment represents the fraction of residues that are not modelled. The numeric value for each fraction is indicated below the corresponding segment, with a dot representing fractions $\leq 5\%$. The upper red bar (where present) indicates the fraction of residues that have poor fit to the electron density. The numeric value is given above the bar.

Mol	Chain	Length	Quality of chain
1	A	259	

The following table lists non-polymeric compounds, carbohydrate monomers and non-standard residues in protein, DNA, RNA chains that are outliers for geometric or electron-density-fit criteria:

Mol	Type	Chain	Res	Chirality	Geometry	Clashes	Electron density
8	SQL	A	308	-	X	-	-

2 Entry composition [i](#)

There are 9 unique types of molecules in this entry. The entry contains 2041 atoms, of which 0 are hydrogens and 0 are deuteriums.

In the tables below, the ZeroOcc column contains the number of atoms modelled with zero occupancy, the AltConf column contains the number of residues with at least one atom in alternate conformation and the Trace column contains the number of residues modelled with at most 2 atoms.

- Molecule 1 is a protein called Archaerhodopsin-2.

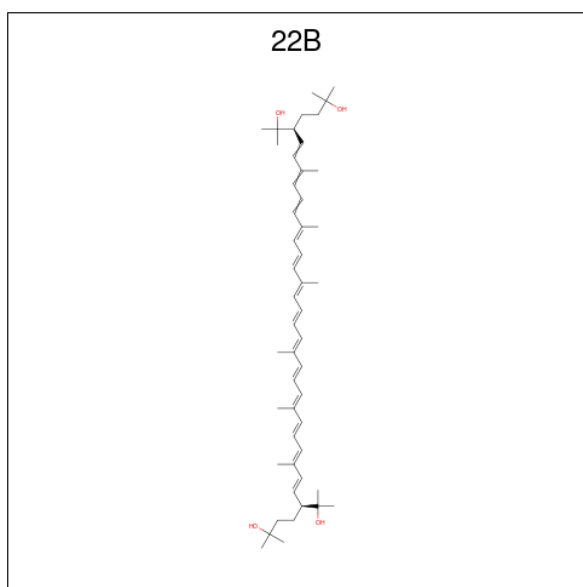
Mol	Chain	Residues	Atoms					ZeroOcc	AltConf	Trace
			Total	C	N	O	S			
1	A	234	1810	1208	282	316	4	0	0	0

- Molecule 2 is RETINAL (three-letter code: RET) (formula: C₂₀H₂₈O).



Mol	Chain	Residues	Atoms		ZeroOcc	AltConf
2	A	1	Total	C	0	0
			20	20		

- Molecule 3 is BACTERIORUBERIN (three-letter code: 22B) (formula: C₅₀H₇₆O₄).



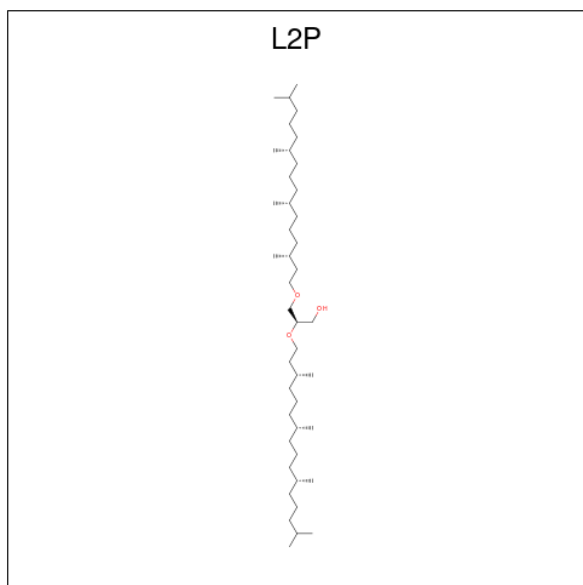
Mol	Chain	Residues	Atoms			ZeroOcc	AltConf
3	A	1	Total	C	O	0	0
			27	25	2		

- Molecule 4 is SULFATE ION (three-letter code: SO₄) (formula: O₄S).



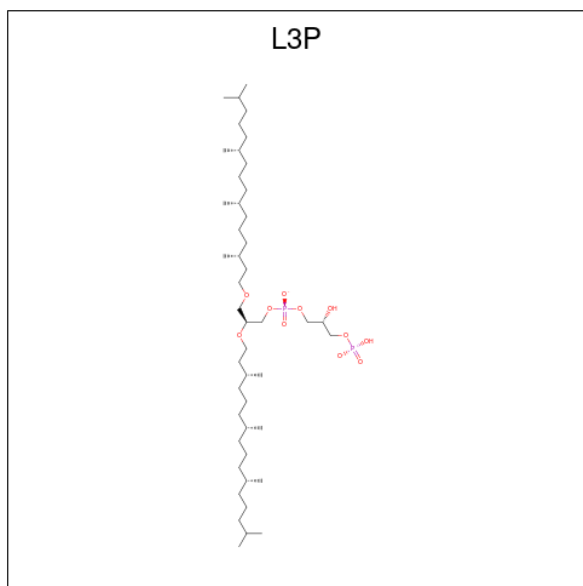
Mol	Chain	Residues	Atoms			ZeroOcc	AltConf
4	A	1	Total	O	S	0	0
			5	4	1		

- Molecule 5 is 2,3-DI-PHYTANYL-GLYCEROL (three-letter code: L2P) (formula: C₄₃H₈₈O₃).



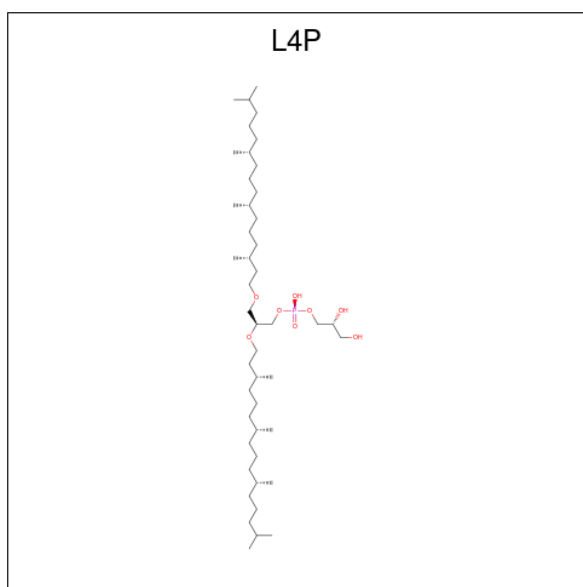
Mol	Chain	Residues	Atoms		ZeroOcc	AltConf	
5	A	1	Total	C	O	0	0
			46	43	3		

- Molecule 6 is 2,3-DI-O-PHYTANYL-3-SN-GLYCERO-1-PHOSPHORYL-3'-SN-GLYCEROL-1'-PHOSPHATE (three-letter code: L3P) (formula: C₄₆H₉₄O₁₁P₂).



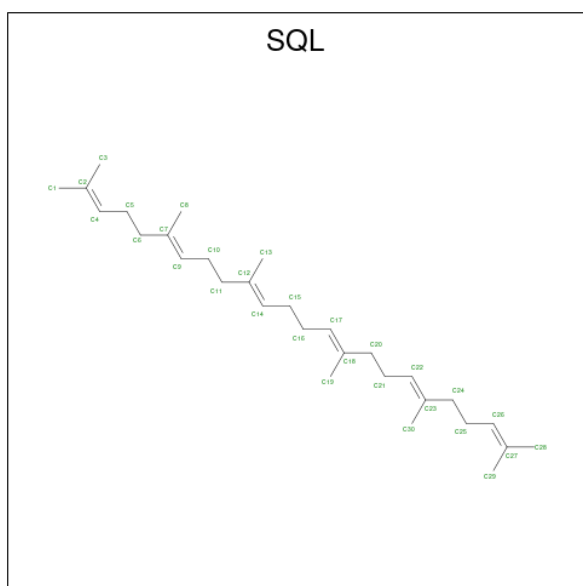
Mol	Chain	Residues	Atoms		ZeroOcc	AltConf	
6	A	1	Total	C		0	0
			20	20			

- Molecule 7 is 3-[GLYCEROLYLPHOSPHONYL]-[1,2-DI-PHYTANYL]GLYCEROL (three-letter code: L4P) (formula: C₄₆H₉₅O₈P).



Mol	Chain	Residues	Atoms	ZeroOcc	AltConf
7	A	1	Total C 16 16	0	0
7	A	1	Total C 16 16	0	0

- Molecule 8 is (6E,10E,14E,18E)-2,6,10,15,19,23-hexamethyltetracos-2,6,10,14,18,22-hexaene (three-letter code: SQL) (formula: C₃₀H₅₀).



Mol	Chain	Residues	Atoms	ZeroOcc	AltConf
8	A	1	Total C 30 30	0	0

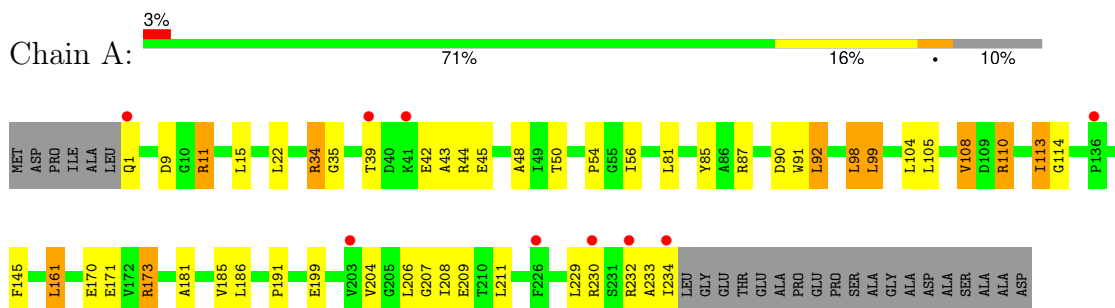
- Molecule 9 is water.

Mol	Chain	Residues	Atoms		ZeroOcc	AltConf
9	A	51	Total	O	0	0
			51	51		

3 Residue-property plots [i](#)

These plots are drawn for all protein, RNA, DNA and oligosaccharide chains in the entry. The first graphic for a chain summarises the proportions of the various outlier classes displayed in the second graphic. The second graphic shows the sequence view annotated by issues in geometry and electron density. Residues are color-coded according to the number of geometric quality criteria for which they contain at least one outlier: green = 0, yellow = 1, orange = 2 and red = 3 or more. A red dot above a residue indicates a poor fit to the electron density ($RSRZ > 2$). Stretches of 2 or more consecutive residues without any outlier are shown as a green connector. Residues present in the sample, but not in the model, are shown in grey.

- Molecule 1: Archaeorhodopsin-2



4 Data and refinement statistics

Property	Value	Source
Space group	H 3 2	Depositor
Cell constants a, b, c, α , β , γ	62.74Å 62.74Å 331.46Å 90.00° 90.00° 120.00°	Depositor
Resolution (Å)	15.00 – 1.80 19.93 – 1.80	Depositor EDS
% Data completeness (in resolution range)	90.5 (15.00-1.80) 91.0 (19.93-1.80)	Depositor EDS
R_{merge}	0.05	Depositor
R_{sym}	0.05	Depositor
$\langle I/\sigma(I) \rangle$ ¹	3.88 (at 1.80Å)	Xtrriage
Refinement program	CNS, REFMAC 5.5.0109	Depositor
R, R_{free}	0.211 , 0.241 0.210 , 0.236	Depositor DCC
R_{free} test set	1112 reflections (5.09%)	wwPDB-VP
Wilson B-factor (Å ²)	22.9	Xtrriage
Anisotropy	0.046	Xtrriage
Bulk solvent k_{sol} (e/Å ³), B_{sol} (Å ²)	0.43 , 82.7	EDS
L-test for twinning ²	$\langle L \rangle = 0.49$, $\langle L^2 \rangle = 0.33$	Xtrriage
Estimated twinning fraction	No twinning to report.	Xtrriage
F_o, F_c correlation	0.95	EDS
Total number of atoms	2041	wwPDB-VP
Average B, all atoms (Å ²)	26.0	wwPDB-VP

Xtrriage's analysis on translational NCS is as follows: *The largest off-origin peak in the Patterson function is 7.09% of the height of the origin peak. No significant pseudotranslation is detected.*

¹Intensities estimated from amplitudes.

²Theoretical values of $\langle |L| \rangle$, $\langle L^2 \rangle$ for acentric reflections are 0.5, 0.333 respectively for untwinned datasets, and 0.375, 0.2 for perfectly twinned datasets.

5 Model quality [i](#)

5.1 Standard geometry [i](#)

Bond lengths and bond angles in the following residue types are not validated in this section: SO4, L2P, 22B, L4P, SQL, RET, L3P

The Z score for a bond length (or angle) is the number of standard deviations the observed value is removed from the expected value. A bond length (or angle) with $|Z| > 5$ is considered an outlier worth inspection. RMSZ is the root-mean-square of all Z scores of the bond lengths (or angles).

Mol	Chain	Bond lengths		Bond angles	
		RMSZ	# Z >5	RMSZ	# Z >5
1	A	0.88	0/1852	0.98	7/2531 (0.3%)

There are no bond length outliers.

All (7) bond angle outliers are listed below:

Mol	Chain	Res	Type	Atoms	Z	Observed(°)	Ideal(°)
1	A	11	ARG	NE-CZ-NH1	-17.20	111.70	120.30
1	A	11	ARG	NE-CZ-NH2	12.86	126.73	120.30
1	A	92	LEU	CB-CG-CD2	-8.93	95.81	111.00
1	A	99	LEU	CB-CG-CD1	6.65	122.31	111.00
1	A	92	LEU	CB-CG-CD1	6.51	122.07	111.00
1	A	98	LEU	CB-CG-CD1	6.22	121.58	111.00
1	A	11	ARG	CD-NE-CZ	5.80	131.73	123.60

There are no chirality outliers.

There are no planarity outliers.

5.2 Too-close contacts [i](#)

In the following table, the Non-H and H(model) columns list the number of non-hydrogen atoms and hydrogen atoms in the chain respectively. The H(added) column lists the number of hydrogen atoms added and optimized by MolProbity. The Clashes column lists the number of clashes within the asymmetric unit, whereas Symm-Clashes lists symmetry-related clashes.

Mol	Chain	Non-H	H(model)	H(added)	Clashes	Symm-Clashes
1	A	1810	0	1878	37	0
2	A	20	0	27	7	0
3	A	27	0	37	4	0
4	A	5	0	0	0	0

Continued on next page...

Continued from previous page...

Mol	Chain	Non-H	H(model)	H(added)	Clashes	Symm-Clashes
5	A	46	0	88	5	0
6	A	20	0	39	0	0
7	A	32	0	62	2	0
8	A	30	0	50	2	0
9	A	51	0	0	1	0
All	All	2041	0	2181	48	0

The all-atom clashscore is defined as the number of clashes found per 1000 atoms (including hydrogen atoms). The all-atom clashscore for this structure is 12.

All (48) close contacts within the same asymmetric unit are listed below, sorted by their clash magnitude.

Atom-1	Atom-2	Interatomic distance (Å)	Clash overlap (Å)
1:A:34:ARG:HH11	1:A:34:ARG:HG2	1.03	1.11
1:A:170:GLU:HG2	1:A:173:ARG:NH2	1.84	0.93
1:A:34:ARG:HH11	1:A:34:ARG:CG	1.83	0.90
1:A:34:ARG:HG2	1:A:34:ARG:NH1	1.85	0.89
1:A:43:ALA:HA	1:A:234:ILE:HG21	1.58	0.85
1:A:11:ARG:HD2	9:A:412:HOH:O	1.77	0.83
1:A:9:ASP:OD1	1:A:11:ARG:HD3	1.81	0.81
1:A:110:ARG:O	1:A:113:ILE:HG22	1.87	0.75
1:A:50:THR:O	1:A:54:PRO:HD2	1.89	0.73
1:A:34:ARG:CG	1:A:34:ARG:NH1	2.51	0.67
1:A:1:GLN:HG3	1:A:207:GLY:H	1.61	0.65
1:A:43:ALA:CA	1:A:234:ILE:HG21	2.25	0.65
2:A:301:RET:H8	2:A:301:RET:H171	1.81	0.62
1:A:9:ASP:CG	1:A:11:ARG:HD3	2.24	0.57
2:A:301:RET:H171	2:A:301:RET:C8	2.34	0.56
1:A:45:GLU:OE2	7:A:307:L4P:H161	2.07	0.54
2:A:301:RET:H8	2:A:301:RET:H161	1.89	0.53
1:A:170:GLU:CG	1:A:173:ARG:NH2	2.67	0.53
1:A:181:ALA:O	1:A:185:VAL:HG12	2.10	0.52
1:A:42:GLU:HG2	1:A:234:ILE:HG23	1.92	0.51
1:A:211:LEU:C	1:A:211:LEU:HD13	2.31	0.50
1:A:191:PRO:HB3	2:A:301:RET:H183	1.93	0.49
5:A:304:L2P:H262	8:A:308:SQL:H15	1.95	0.49
1:A:113:ILE:HG23	1:A:114:GLY:N	2.29	0.48
1:A:34:ARG:NH2	1:A:230:ARG:HD3	2.29	0.48
1:A:199:GLU:OE1	1:A:209:GLU:OE2	2.32	0.48
1:A:35:GLY:O	3:A:302:22B:H171	2.14	0.47
3:A:302:22B:C4	3:A:302:22B:O26	2.63	0.47

Continued on next page...

Continued from previous page...

Atom-1	Atom-2	Interatomic distance (Å)	Clash overlap (Å)
1:A:56:ILE:HG12	5:A:304:L2P:H571	1.96	0.47
8:A:308:SQL:H16	8:A:308:SQL:H21	1.46	0.46
1:A:108:VAL:HG11	1:A:161:LEU:HD22	1.98	0.45
1:A:85:TYR:HD1	5:A:304:L2P:H191	1.81	0.45
1:A:45:GLU:OE2	7:A:307:L4P:H172	2.17	0.45
1:A:48:ALA:HA	3:A:302:22B:H182	1.97	0.45
2:A:301:RET:C8	2:A:301:RET:H161	2.46	0.44
1:A:110:ARG:O	1:A:113:ILE:CG2	2.63	0.43
3:A:302:22B:H7	3:A:302:22B:H181	1.71	0.43
1:A:110:ARG:HA	1:A:113:ILE:HG22	2.00	0.42
1:A:204:VAL:HG12	1:A:208:ILE:HG23	2.00	0.42
5:A:304:L2P:H542	5:A:304:L2P:H511	1.83	0.42
1:A:1:GLN:HB3	1:A:207:GLY:HA3	2.01	0.42
2:A:301:RET:H7	2:A:301:RET:H181	1.88	0.41
1:A:39:THR:O	1:A:44:ARG:NH2	2.53	0.41
5:A:304:L2P:H543	5:A:304:L2P:H562	1.89	0.41
1:A:171:GLU:OE1	1:A:232:ARG:HB2	2.21	0.41
1:A:91:TRP:CD1	2:A:301:RET:H14	2.56	0.41
1:A:42:GLU:HG2	1:A:234:ILE:CG2	2.51	0.41
1:A:87:ARG:O	1:A:90:ASP:HB3	2.21	0.40

There are no symmetry-related clashes.

5.3 Torsion angles [i](#)

5.3.1 Protein backbone [i](#)

In the following table, the Percentiles column shows the percent Ramachandran outliers of the chain as a percentile score with respect to all X-ray entries followed by that with respect to entries of similar resolution.

The Analysed column shows the number of residues for which the backbone conformation was analysed, and the total number of residues.

Mol	Chain	Analysed	Favoured	Allowed	Outliers	Percentiles
1	A	232/259 (90%)	227 (98%)	4 (2%)	1 (0%)	34 21

All (1) Ramachandran outliers are listed below:

Mol	Chain	Res	Type
1	A	233	ALA

5.3.2 Protein sidechains [i](#)

In the following table, the Percentiles column shows the percent sidechain outliers of the chain as a percentile score with respect to all X-ray entries followed by that with respect to entries of similar resolution.

The Analysed column shows the number of residues for which the sidechain conformation was analysed, and the total number of residues.

Mol	Chain	Analysed	Rotameric	Outliers	Percentiles
1	A	185/201 (92%)	167 (90%)	18 (10%)	8 2

All (18) residues with a non-rotameric sidechain are listed below:

Mol	Chain	Res	Type
1	A	15	LEU
1	A	22	LEU
1	A	34	ARG
1	A	81	LEU
1	A	92	LEU
1	A	98	LEU
1	A	99	LEU
1	A	104	LEU
1	A	105	LEU
1	A	108	VAL
1	A	110	ARG
1	A	113	ILE
1	A	145	PHE
1	A	161	LEU
1	A	173	ARG
1	A	186	LEU
1	A	206	LEU
1	A	229	LEU

Sometimes sidechains can be flipped to improve hydrogen bonding and reduce clashes. All (1) such sidechains are listed below:

Mol	Chain	Res	Type
1	A	177	ASN

5.3.3 RNA [i](#)

There are no RNA molecules in this entry.

5.4 Non-standard residues in protein, DNA, RNA chains [i](#)

There are no non-standard protein/DNA/RNA residues in this entry.

5.5 Carbohydrates [i](#)

There are no monosaccharides in this entry.

5.6 Ligand geometry [i](#)

8 ligands are modelled in this entry.

In the following table, the Counts columns list the number of bonds (or angles) for which Mogul statistics could be retrieved, the number of bonds (or angles) that are observed in the model and the number of bonds (or angles) that are defined in the Chemical Component Dictionary. The Link column lists molecule types, if any, to which the group is linked. The Z score for a bond length (or angle) is the number of standard deviations the observed value is removed from the expected value. A bond length (or angle) with $|Z| > 2$ is considered an outlier worth inspection. RMSZ is the root-mean-square of all Z scores of the bond lengths (or angles).

Mol	Type	Chain	Res	Link	Bond lengths			Bond angles		
					Counts	RMSZ	# Z > 2	Counts	RMSZ	# Z > 2
7	L4P	A	306	-	15,15,54	0.23	0	17,17,66	0.60	0
6	L3P	A	305	-	19,19,58	0.24	0	22,22,73	0.50	0
5	L2P	A	304	-	45,45,45	0.48	0	51,53,53	0.71	0
4	SO4	A	303	-	4,4,4	0.45	0	6,6,6	1.17	1 (16%)
2	RET	A	301	1	20,20,21	1.13	1 (5%)	27,27,28	3.32	13 (48%)
8	SQL	A	308	-	29,29,29	3.50	6 (20%)	32,34,34	3.75	21 (65%)
3	22B	A	302	-	26,26,53	0.91	2 (7%)	31,35,72	1.62	5 (16%)
7	L4P	A	307	-	15,15,54	0.42	0	17,17,66	0.55	0

In the following table, the Chirals column lists the number of chiral outliers, the number of chiral centers analysed, the number of these observed in the model and the number defined in the Chemical Component Dictionary. Similar counts are reported in the Torsion and Rings columns. '-' means no outliers of that kind were identified.

Mol	Type	Chain	Res	Link	Chirals	Torsions	Rings
7	L4P	A	306	-	-	9/15/15/63	-
6	L3P	A	305	-	-	10/20/20/67	-
5	L2P	A	304	-	-	27/51/51/51	-
2	RET	A	301	1	-	0/13/30/31	0/1/1/1
8	SQL	A	308	-	-	14/31/31/31	-

Continued on next page...

Continued from previous page...

Mol	Type	Chain	Res	Link	Chirals	Torsions	Rings
3	22B	A	302	-	-	17/31/31/65	-
7	L4P	A	307	-	-	10/15/15/63	-

All (9) bond length outliers are listed below:

Mol	Chain	Res	Type	Atoms	Z	Observed(Å)	Ideal(Å)
8	A	308	SQL	C9-C7	9.17	1.54	1.33
8	A	308	SQL	C22-C23	8.75	1.53	1.33
8	A	308	SQL	C14-C12	8.74	1.53	1.33
8	A	308	SQL	C26-C27	6.93	1.53	1.32
8	A	308	SQL	C4-C2	6.90	1.53	1.32
8	A	308	SQL	C16-C15	-3.04	1.33	1.52
3	A	302	22B	C2-C3	2.54	1.53	1.49
3	A	302	22B	C14-C13	2.37	1.35	1.33
2	A	301	RET	C14-C13	2.34	1.35	1.33

All (40) bond angle outliers are listed below:

Mol	Chain	Res	Type	Atoms	Z	Observed(°)	Ideal(°)
8	A	308	SQL	C15-C14-C12	-7.80	109.78	127.62
2	A	301	RET	C1-C6-C5	-7.44	112.47	122.64
2	A	301	RET	C17-C1-C6	-7.20	98.95	110.24
8	A	308	SQL	C21-C22-C23	-6.94	111.74	127.62
8	A	308	SQL	C10-C9-C7	-6.72	112.24	127.62
2	A	301	RET	C17-C1-C2	-6.17	85.26	108.95
3	A	302	22B	C7-C6-C5	-5.49	119.57	127.28
8	A	308	SQL	C6-C7-C9	-5.49	108.84	121.17
2	A	301	RET	C17-C1-C16	-5.40	93.16	108.63
8	A	308	SQL	C24-C23-C22	-5.14	109.63	121.17
8	A	308	SQL	C13-C12-C14	-5.07	110.61	123.63
8	A	308	SQL	C30-C23-C22	-4.92	111.00	123.63
2	A	301	RET	C2-C1-C6	4.91	117.58	110.44
8	A	308	SQL	C11-C12-C14	-4.90	110.16	121.17
8	A	308	SQL	C8-C7-C9	-4.90	111.03	123.63
8	A	308	SQL	C25-C26-C27	-4.66	112.11	127.64
8	A	308	SQL	C5-C4-C2	-4.53	112.53	127.64
2	A	301	RET	C16-C1-C2	4.52	126.30	108.95
2	A	301	RET	C3-C2-C1	-4.12	99.85	114.43
8	A	308	SQL	C3-C2-C4	-3.82	111.18	122.66
8	A	308	SQL	C28-C27-C26	-3.82	111.20	122.66
8	A	308	SQL	C29-C27-C26	-3.81	111.23	122.66
8	A	308	SQL	C1-C2-C4	-3.57	111.96	122.66

Continued on next page...

Continued from previous page...

Mol	Chain	Res	Type	Atoms	Z	Observed(°)	Ideal(°)
2	A	301	RET	C16-C1-C6	3.46	115.68	110.24
2	A	301	RET	C1-C6-C7	3.34	124.71	115.65
3	A	302	22B	C18-C5-C4	3.34	123.19	118.09
3	A	302	22B	C10-C11-C12	-3.04	114.39	123.20
8	A	308	SQL	C16-C17-C18	-2.81	121.19	127.62
2	A	301	RET	C20-C13-C12	2.79	122.35	118.09
2	A	301	RET	C10-C11-C12	-2.60	115.67	123.20
2	A	301	RET	C12-C13-C14	-2.43	112.09	118.55
3	A	302	22B	C17-C1-C2	-2.42	108.45	111.71
8	A	308	SQL	C30-C23-C24	-2.32	111.21	115.23
8	A	308	SQL	C19-C18-C17	-2.29	117.74	123.63
8	A	308	SQL	C3-C2-C1	-2.27	109.36	114.59
8	A	308	SQL	C8-C7-C6	-2.25	111.32	115.23
8	A	308	SQL	C13-C12-C11	-2.22	111.38	115.23
4	A	303	SO4	O3-S-O2	-2.15	98.32	109.56
3	A	302	22B	C18-C5-C6	-2.13	119.37	122.82
2	A	301	RET	C7-C8-C9	-2.07	123.17	126.23

There are no chirality outliers.

All (87) torsion outliers are listed below:

Mol	Chain	Res	Type	Atoms
3	A	302	22B	C16-C1-C2-C3
3	A	302	22B	C16-C1-C2-C21
3	A	302	22B	C17-C1-C2-C3
3	A	302	22B	C17-C1-C2-C21
3	A	302	22B	O26-C1-C2-C3
3	A	302	22B	O26-C1-C2-C21
3	A	302	22B	C1-C2-C3-C4
3	A	302	22B	C3-C2-C21-C22
3	A	302	22B	C11-C12-C13-C14
3	A	302	22B	C11-C12-C13-C20
7	A	307	L4P	C16-C17-C18-C19
8	A	308	SQL	C21-C22-C23-C30
8	A	308	SQL	C25-C26-C27-C29
8	A	308	SQL	C1-C2-C4-C5
8	A	308	SQL	C25-C26-C27-C28
8	A	308	SQL	C5-C6-C7-C9
8	A	308	SQL	C10-C11-C12-C14
8	A	308	SQL	C22-C23-C24-C25
8	A	308	SQL	C8-C7-C9-C10
8	A	308	SQL	C4-C5-C6-C7

Continued on next page...

Continued from previous page...

Mol	Chain	Res	Type	Atoms
8	A	308	SQL	C18-C20-C21-C22
5	A	304	L2P	C51-C52-C53-C54
5	A	304	L2P	C20-C21-C22-C23
5	A	304	L2P	C43-C45-C46-C47
5	A	304	L2P	C42-C43-C45-C46
6	A	305	L3P	C23-C25-C26-C27
3	A	302	22B	C21-C22-C23-C25
5	A	304	L2P	O1-C11-C12-C13
5	A	304	L2P	C48-C50-C51-C52
5	A	304	L2P	C53-C55-C56-C57
7	A	307	L4P	C23-C25-C26-C27
6	A	305	L3P	C13-C15-C16-C17
8	A	308	SQL	C13-C12-C14-C15
7	A	306	L4P	C26-C27-C28-C30
7	A	306	L4P	C26-C27-C28-C29
5	A	304	L2P	C26-C27-C28-C29
5	A	304	L2P	C26-C27-C28-C30
5	A	304	L2P	C50-C51-C52-C53
5	A	304	L2P	C18-C20-C21-C22
3	A	302	22B	C21-C22-C23-O27
8	A	308	SQL	C3-C2-C4-C5
3	A	302	22B	C21-C2-C3-C4
7	A	306	L4P	C16-C17-C18-C20
7	A	307	L4P	C21-C22-C23-C25
5	A	304	L2P	C44-C43-C45-C46
5	A	304	L2P	C46-C47-C48-C49
6	A	305	L3P	C14-C13-C15-C16
7	A	306	L4P	C16-C17-C18-C19
7	A	307	L4P	C21-C22-C23-C24
3	A	302	22B	C2-C21-C22-C23
6	A	305	L3P	C18-C20-C21-C22
6	A	305	L3P	C26-C27-C28-C30
3	A	302	22B	C21-C22-C23-C24
5	A	304	L2P	C15-C16-C17-C18
6	A	305	L3P	C19-C18-C20-C21
7	A	307	L4P	C24-C23-C25-C26
5	A	304	L2P	C12-C13-C15-C16
6	A	305	L3P	C12-C13-C15-C16
6	A	305	L3P	C17-C18-C20-C21
7	A	307	L4P	C16-C17-C18-C20
7	A	307	L4P	C17-C18-C20-C21
7	A	307	L4P	C22-C23-C25-C26

Continued on next page...

Continued from previous page...

Mol	Chain	Res	Type	Atoms
7	A	306	L4P	C25-C26-C27-C28
6	A	305	L3P	C26-C27-C28-C29
5	A	304	L2P	C13-C15-C16-C17
5	A	304	L2P	C51-C52-C53-C55
5	A	304	L2P	C55-C56-C57-C58
5	A	304	L2P	C12-C11-O1-C1
5	A	304	L2P	C14-C13-C15-C16
3	A	302	22B	C3-C4-C5-C18
5	A	304	L2P	C25-C26-C27-C28
3	A	302	22B	C3-C4-C5-C6
5	A	304	L2P	C56-C57-C58-C59
5	A	304	L2P	C54-C53-C55-C56
6	A	305	L3P	C16-C17-C18-C19
7	A	306	L4P	C21-C22-C23-C24
7	A	307	L4P	C19-C18-C20-C21
7	A	306	L4P	C21-C22-C23-C25
5	A	304	L2P	C21-C22-C23-C24
5	A	304	L2P	C21-C22-C23-C25
8	A	308	SQL	C19-C18-C20-C21
5	A	304	L2P	O1-C1-C2-O2
7	A	306	L4P	C22-C23-C25-C26
5	A	304	L2P	C56-C57-C58-C60
7	A	306	L4P	C24-C23-C25-C26
7	A	307	L4P	C18-C20-C21-C22
8	A	308	SQL	C11-C12-C14-C15

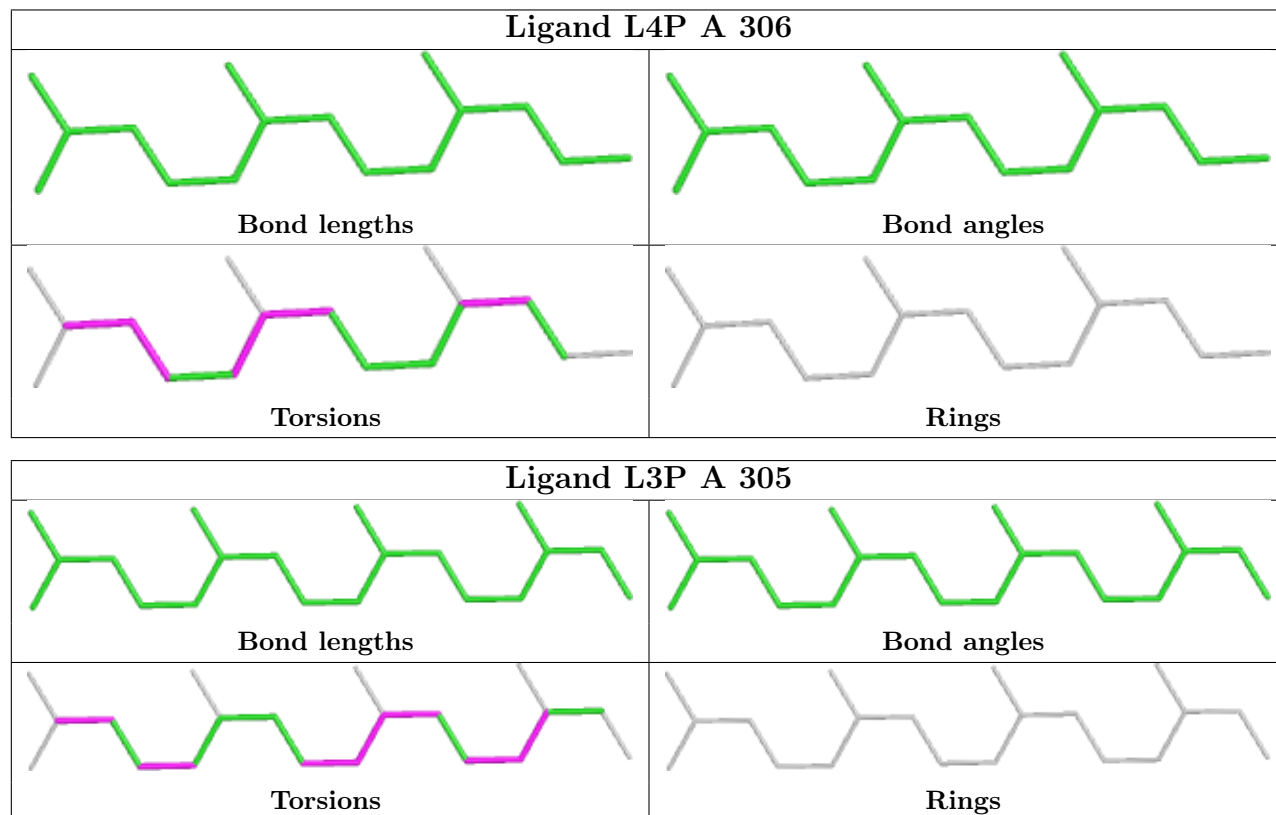
There are no ring outliers.

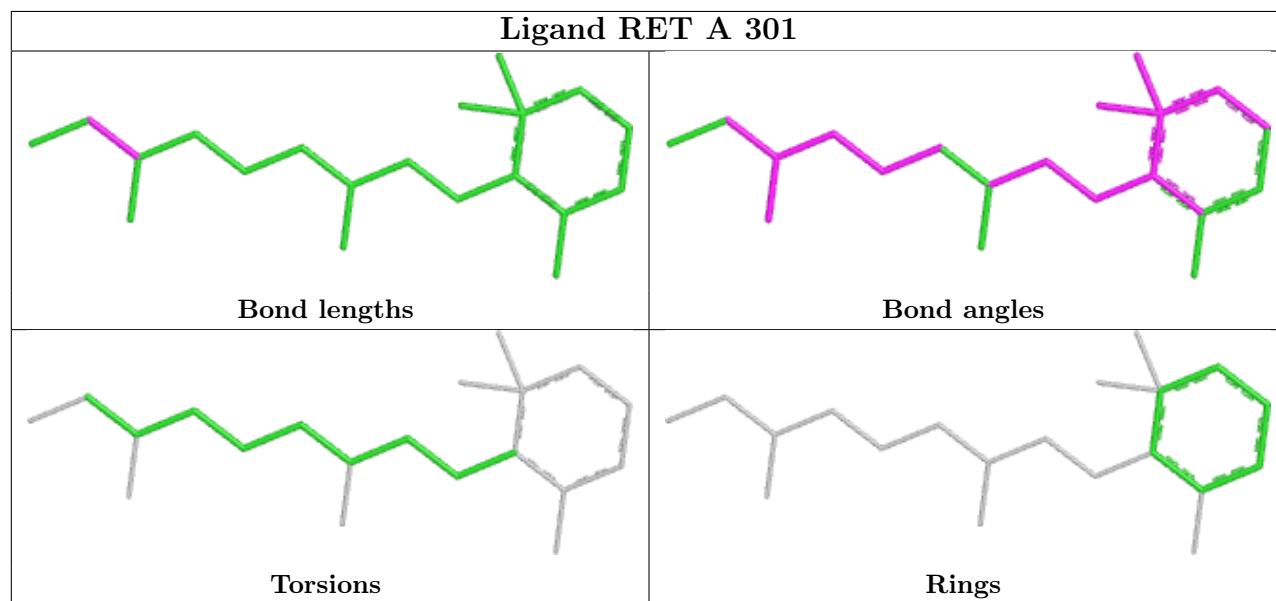
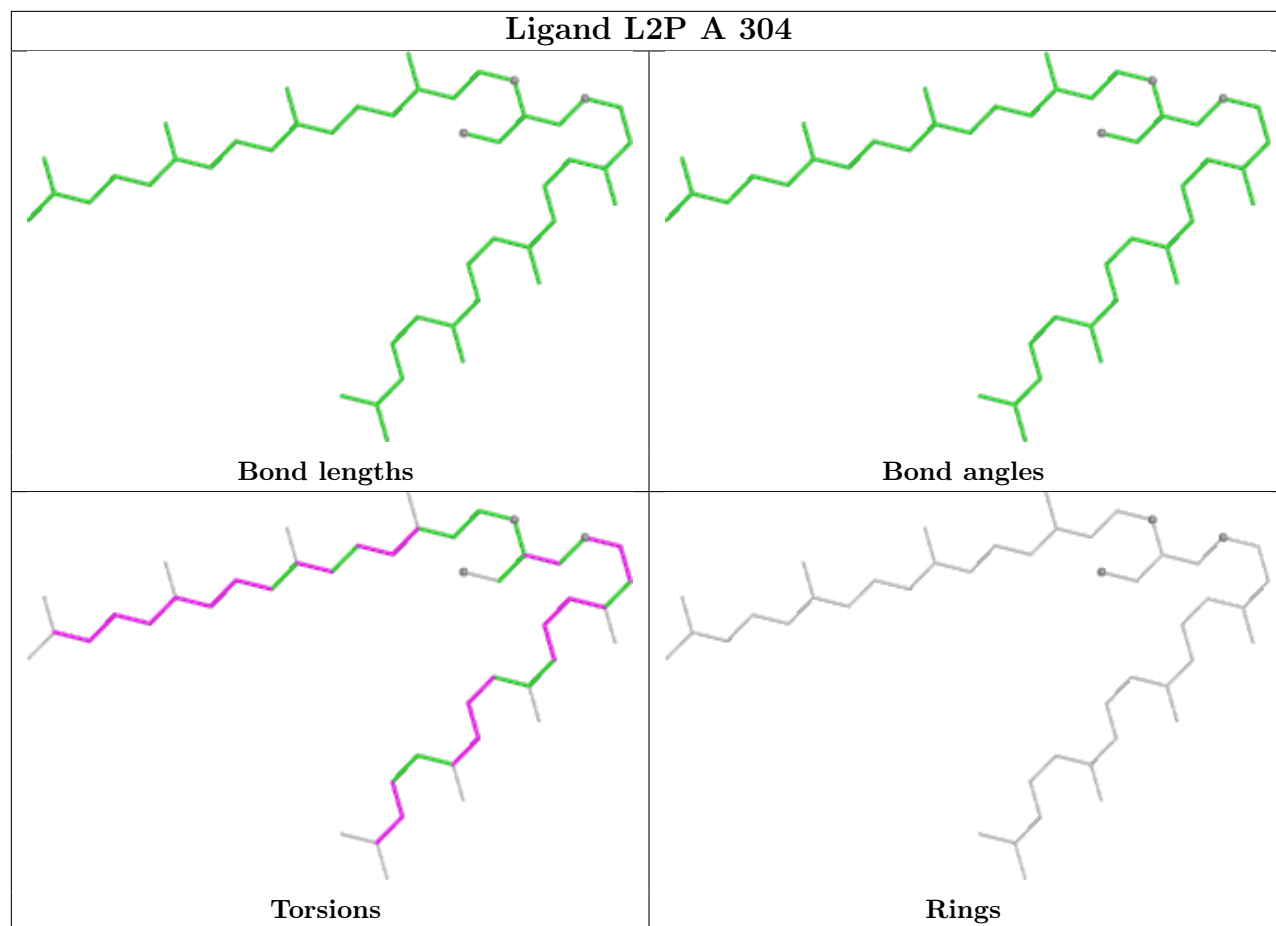
5 monomers are involved in 19 short contacts:

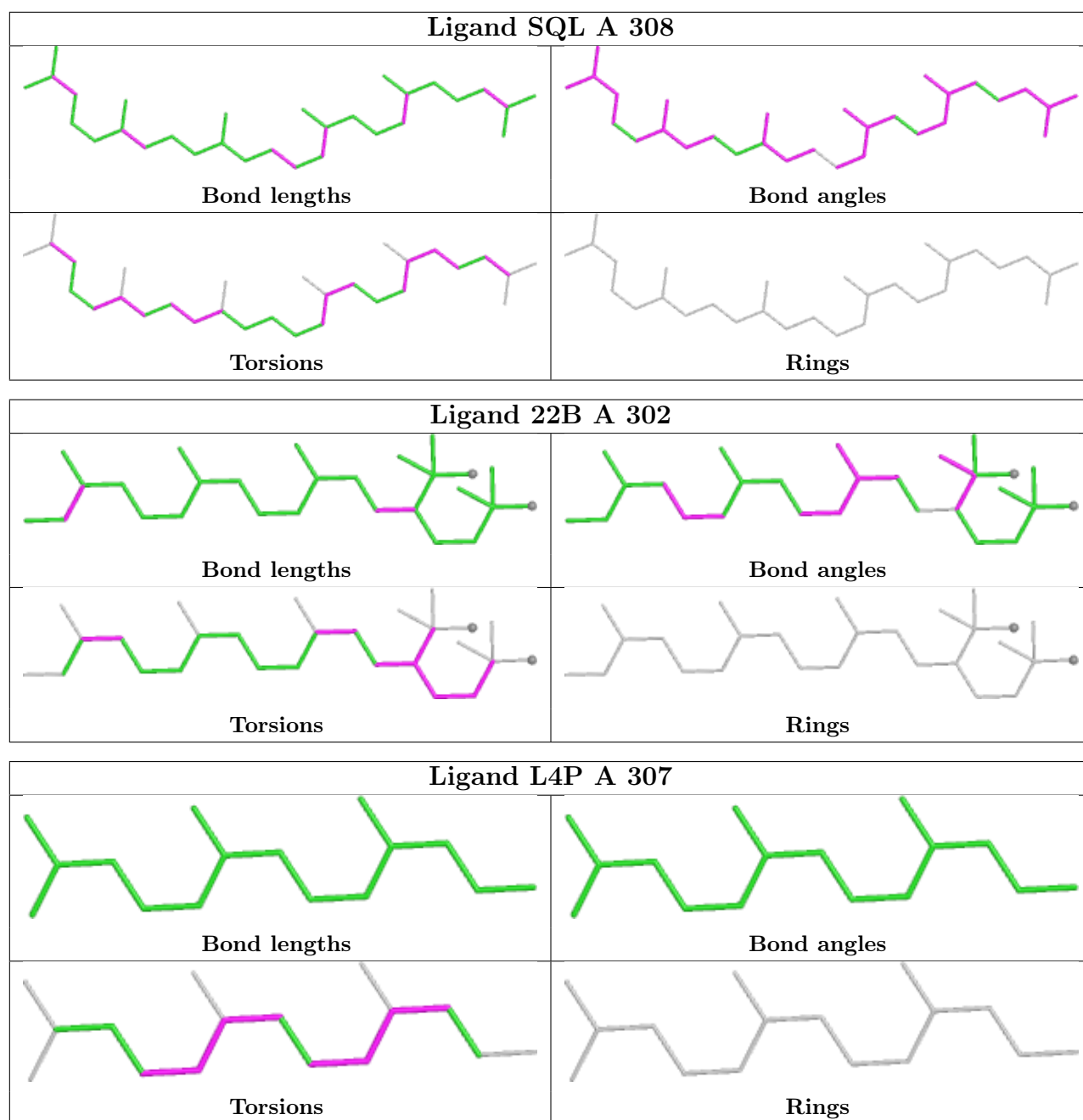
Mol	Chain	Res	Type	Clashes	Symm-Clashes
5	A	304	L2P	5	0
2	A	301	RET	7	0
8	A	308	SQL	2	0
3	A	302	22B	4	0
7	A	307	L4P	2	0

The following is a two-dimensional graphical depiction of Mogul quality analysis of bond lengths, bond angles, torsion angles, and ring geometry for all instances of the Ligand of Interest. In addition, ligands with molecular weight > 250 and outliers as shown on the validation Tables will also be included. For torsion angles, if less than 5% of the Mogul distribution of torsion angles is within 10 degrees of the torsion angle in question, then that torsion angle is considered an outlier. Any bond that is central to one or more torsion angles identified as an outlier by Mogul will be

highlighted in the graph. For rings, the root-mean-square deviation (RMSD) between the ring in question and similar rings identified by Mogul is calculated over all ring torsion angles. If the average RMSD is greater than 60 degrees and the minimal RMSD between the ring in question and any Mogul-identified rings is also greater than 60 degrees, then that ring is considered an outlier. The outliers are highlighted in purple. The color gray indicates Mogul did not find sufficient equivalents in the CSD to analyse the geometry.







5.7 Other polymers [\(i\)](#)

There are no such residues in this entry.

5.8 Polymer linkage issues [\(i\)](#)

There are no chain breaks in this entry.

6 Fit of model and data [i](#)

6.1 Protein, DNA and RNA chains [i](#)

In the following table, the column labelled '#RSRZ > 2' contains the number (and percentage) of RSRZ outliers, followed by percent RSRZ outliers for the chain as percentile scores relative to all X-ray entries and entries of similar resolution. The OWAB column contains the minimum, median, 95th percentile and maximum values of the occupancy-weighted average B-factor per residue. The column labelled 'Q < 0.9' lists the number of (and percentage) of residues with an average occupancy less than 0.9.

Mol	Chain	Analysed	<RSRZ>	#RSRZ>2	OWAB(Å ²)	Q<0.9
1	A	234/259 (90%)	-0.13	9 (3%) 40 35	13, 22, 37, 44	0

All (9) RSRZ outliers are listed below:

Mol	Chain	Res	Type	RSRZ
1	A	234	ILE	4.7
1	A	41	LYS	3.6
1	A	203	VAL	3.5
1	A	230	ARG	3.1
1	A	39	THR	2.8
1	A	232	ARG	2.5
1	A	1	GLN	2.1
1	A	226	PHE	2.0
1	A	136	PRO	2.0

6.2 Non-standard residues in protein, DNA, RNA chains [i](#)

There are no non-standard protein/DNA/RNA residues in this entry.

6.3 Carbohydrates [i](#)

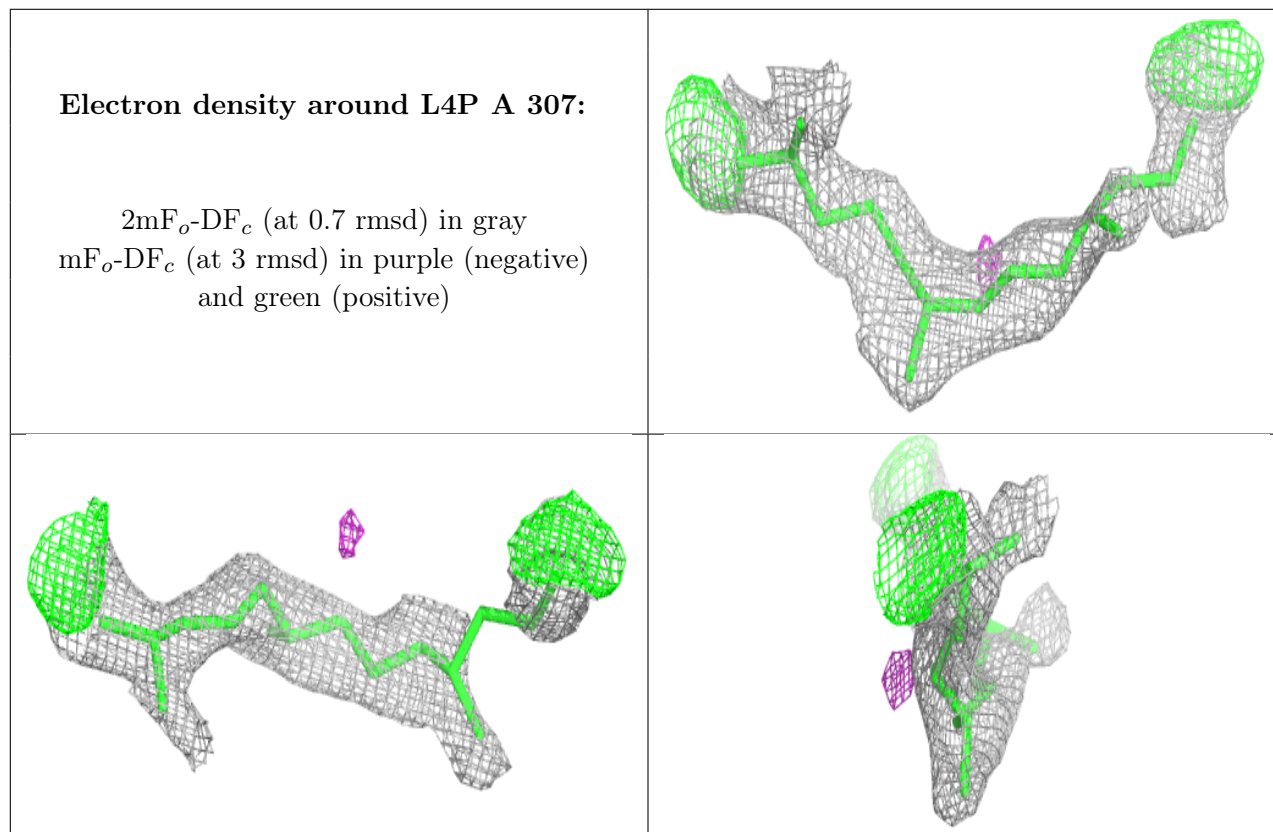
There are no monosaccharides in this entry.

6.4 Ligands [i](#)

In the following table, the Atoms column lists the number of modelled atoms in the group and the number defined in the chemical component dictionary. The B-factors column lists the minimum, median, 95th percentile and maximum values of B factors of atoms in the group. The column labelled 'Q < 0.9' lists the number of atoms with occupancy less than 0.9.

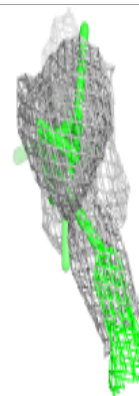
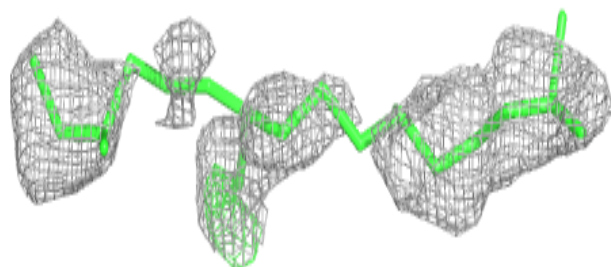
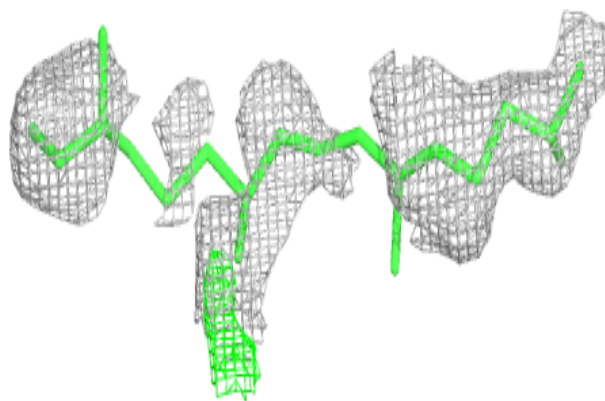
Mol	Type	Chain	Res	Atoms	RSCC	RSR	B-factors(\AA^2)	Q<0.9
7	L4P	A	307	16/55	0.47	0.24	43,51,57,58	0
6	L3P	A	305	20/59	0.52	0.26	73,76,77,78	0
8	SQL	A	308	30/30	0.59	0.30	71,81,85,85	30
3	22B	A	302	27/54	0.68	0.26	47,52,63,64	0
5	L2P	A	304	46/46	0.76	0.21	30,59,63,65	0
7	L4P	A	306	16/55	0.80	0.14	52,53,57,57	0
2	RET	A	301	20/21	0.94	0.12	13,16,18,20	0
4	SO4	A	303	5/5	0.98	0.07	18,21,25,29	0

The following is a graphical depiction of the model fit to experimental electron density of all instances of the Ligand of Interest. In addition, ligands with molecular weight > 250 and outliers as shown on the geometry validation Tables will also be included. Each fit is shown from different orientation to approximate a three-dimensional view.

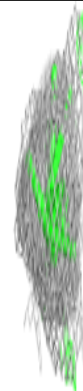
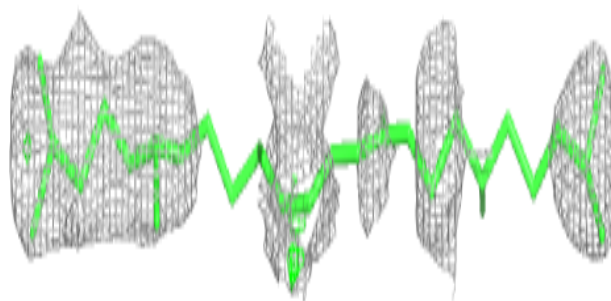
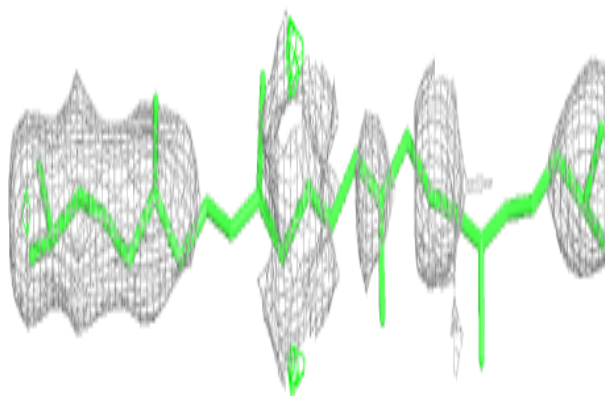


Electron density around L3P A 305:

$2mF_o-DF_c$ (at 0.7 rmsd) in gray
 mF_o-DF_c (at 3 rmsd) in purple (negative)
and green (positive)

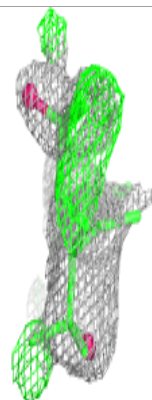
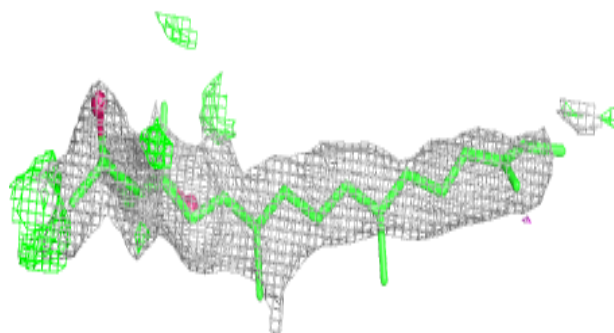
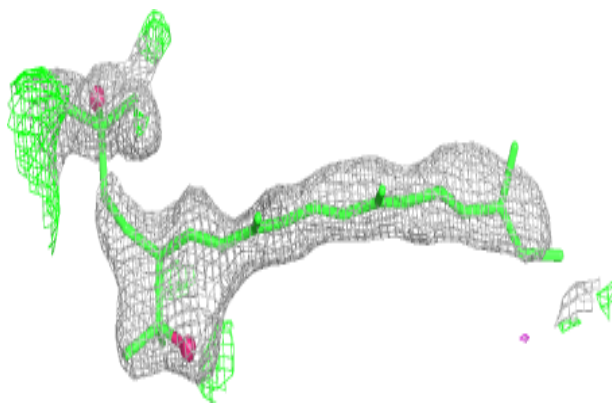
**Electron density around SQL A 308:**

$2mF_o-DF_c$ (at 0.7 rmsd) in gray
 mF_o-DF_c (at 3 rmsd) in purple (negative)
and green (positive)

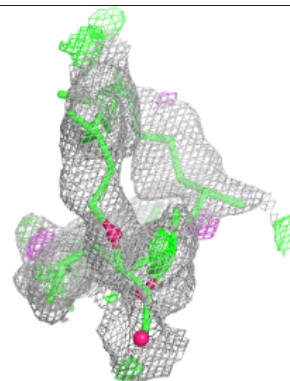
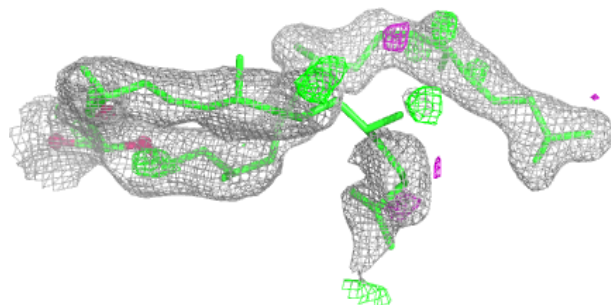
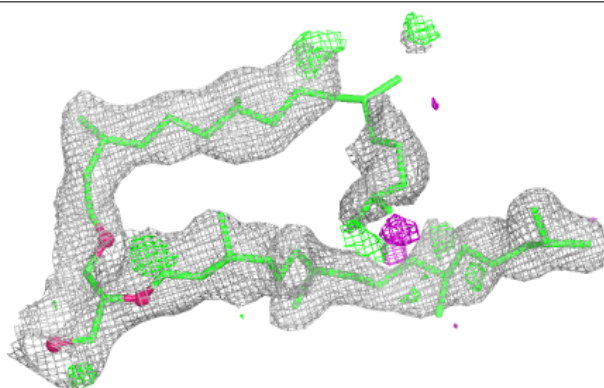


Electron density around 22B A 302:

$2mF_o-DF_c$ (at 0.7 rmsd) in gray
 mF_o-DF_c (at 3 rmsd) in purple (negative)
and green (positive)

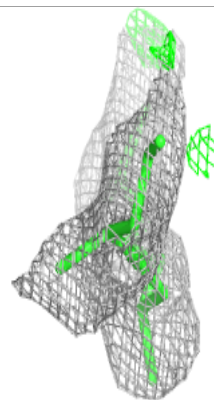
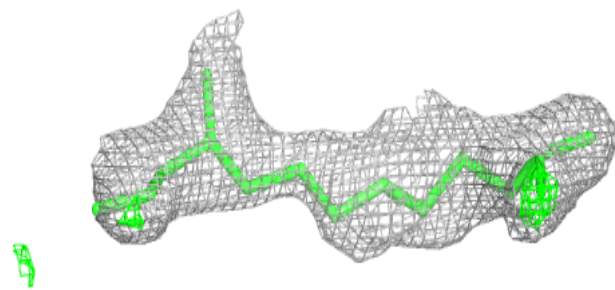
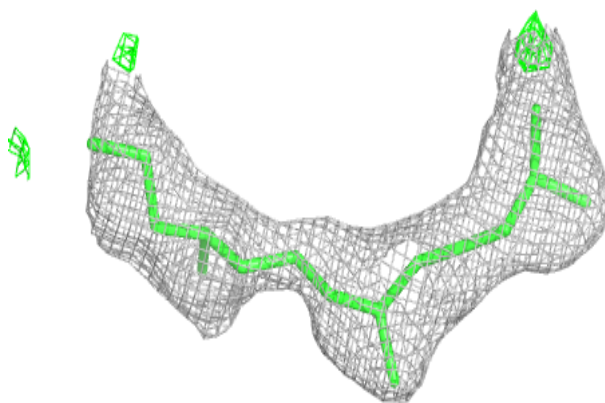
**Electron density around L2P A 304:**

$2mF_o-DF_c$ (at 0.7 rmsd) in gray
 mF_o-DF_c (at 3 rmsd) in purple (negative)
and green (positive)

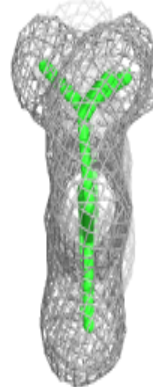
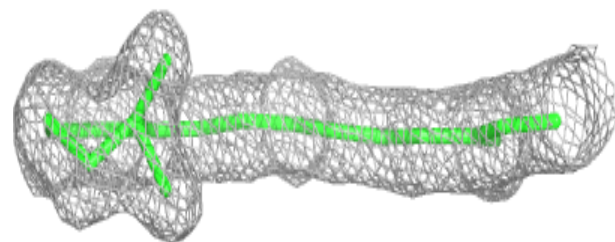
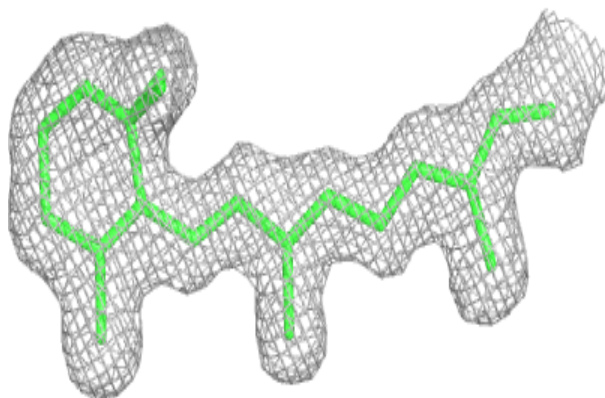


Electron density around L4P A 306:

$2mF_o-DF_c$ (at 0.7 rmsd) in gray
 mF_o-DF_c (at 3 rmsd) in purple (negative)
and green (positive)

**Electron density around RET A 301:**

$2mF_o-DF_c$ (at 0.7 rmsd) in gray
 mF_o-DF_c (at 3 rmsd) in purple (negative)
and green (positive)



6.5 Other polymers [i](#)

There are no such residues in this entry.