



Full wwPDB X-ray Structure Validation Report ⓘ

May 14, 2020 – 10:14 am BST

PDB ID : 5WS4
Title : Crystal structure of tripartite-type ABC transporter MacB from *Acinetobacter baumannii*
Authors : Murakami, S.; Okada, U.; Yamashita, E.
Deposited on : 2016-12-05
Resolution : 3.40 Å(reported)

This is a Full wwPDB X-ray Structure Validation Report for a publicly released PDB entry.

We welcome your comments at validation@mail.wwpdb.org

A user guide is available at

<https://www.wwpdb.org/validation/2017/XrayValidationReportHelp>

with specific help available everywhere you see the ⓘ symbol.

The following versions of software and data (see [references ⓘ](#)) were used in the production of this report:

MolProbity : 4.02b-467
Mogul : 1.8.5 (274361), CSD as541be (2020)
Xtriage (Phenix) : 1.13
EDS : 2.11
buster-report : 1.1.7 (2018)
Percentile statistics : 20191225.v01 (using entries in the PDB archive December 25th 2019)
Refmac : 5.8.0158
CCP4 : 7.0.044 (Gargrove)
Ideal geometry (proteins) : Engh & Huber (2001)
Ideal geometry (DNA, RNA) : Parkinson et al. (1996)
Validation Pipeline (wwPDB-VP) : 2.11

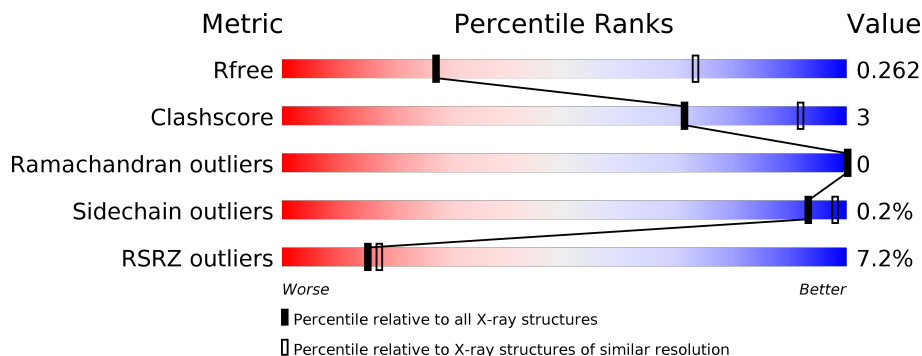
1 Overall quality at a glance

The following experimental techniques were used to determine the structure:

X-RAY DIFFRACTION

The reported resolution of this entry is 3.40 Å.

Percentile scores (ranging between 0-100) for global validation metrics of the entry are shown in the following graphic. The table shows the number of entries on which the scores are based.



Metric	Whole archive (#Entries)	Similar resolution (#Entries, resolution range(Å))
R_{free}	130704	1026 (3.48-3.32)
Clashscore	141614	1055 (3.48-3.32)
Ramachandran outliers	138981	1038 (3.48-3.32)
Sidechain outliers	138945	1038 (3.48-3.32)
RSRZ outliers	127900	2173 (3.50-3.30)

The table below summarises the geometric issues observed across the polymeric chains and their fit to the electron density. The red, orange, yellow and green segments on the lower bar indicate the fraction of residues that contain outliers for ≥ 3 , 2, 1 and 0 types of geometric quality criteria respectively. A grey segment represents the fraction of residues that are not modelled. The numeric value for each fraction is indicated below the corresponding segment, with a dot representing fractions $\leq 5\%$. The upper red bar (where present) indicates the fraction of residues that have poor fit to the electron density. The numeric value is given above the bar.

Mol	Chain	Length	Quality of chain
1	A	671	
1	B	671	

The following table lists non-polymeric compounds, carbohydrate monomers and non-standard residues in protein, DNA, RNA chains that are outliers for geometric or electron-density-fit criteria:

Mol	Type	Chain	Res	Chirality	Geometry	Clashes	Electron density
2	AT4	B	701	-	-	-	X

2 Entry composition

There are 2 unique types of molecules in this entry. The entry contains 9824 atoms, of which 0 are hydrogens and 0 are deuteriums.

In the tables below, the ZeroOcc column contains the number of atoms modelled with zero occupancy, the AltConf column contains the number of residues with at least one atom in alternate conformation and the Trace column contains the number of residues modelled with at most 2 atoms.

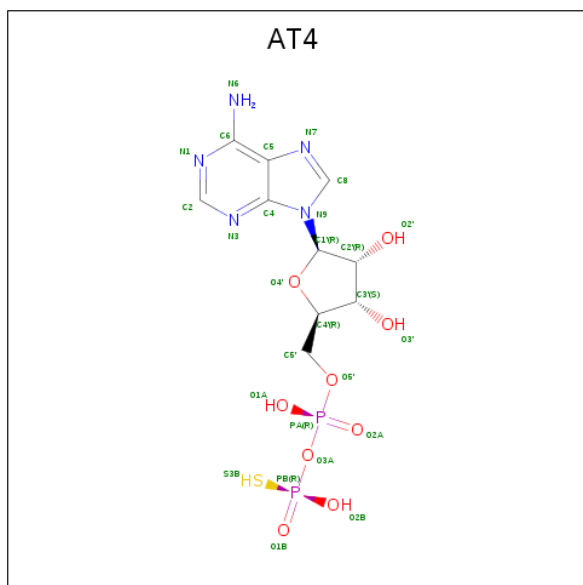
- Molecule 1 is a protein called Macrolide export ATP-binding/permease protein MacB.

Mol	Chain	Residues	Atoms					ZeroOcc	AltConf	Trace
			Total	C	N	O	S			
1	A	650	Total	C	N	O	S	0	0	0
			4885	3056	854	952	23			
1	B	650	Total	C	N	O	S	0	0	0
			4885	3056	854	952	23			

There are 14 discrepancies between the modelled and reference sequences:

Chain	Residue	Modelled	Actual	Comment	Reference
A	-6	MET	-	expression tag	UNP A0A0D8G707
A	-5	HIS	-	expression tag	UNP A0A0D8G707
A	-4	HIS	-	expression tag	UNP A0A0D8G707
A	-3	HIS	-	expression tag	UNP A0A0D8G707
A	-2	HIS	-	expression tag	UNP A0A0D8G707
A	-1	HIS	-	expression tag	UNP A0A0D8G707
A	0	HIS	-	expression tag	UNP A0A0D8G707
B	-6	MET	-	expression tag	UNP A0A0D8G707
B	-5	HIS	-	expression tag	UNP A0A0D8G707
B	-4	HIS	-	expression tag	UNP A0A0D8G707
B	-3	HIS	-	expression tag	UNP A0A0D8G707
B	-2	HIS	-	expression tag	UNP A0A0D8G707
B	-1	HIS	-	expression tag	UNP A0A0D8G707
B	0	HIS	-	expression tag	UNP A0A0D8G707

- Molecule 2 is 5'-O-[(R)-HYDROXY(THIOPHOSPHONOOXY)PHOSPHORYL]ADENOSINE (three-letter code: AT4) (formula: C₁₀H₁₅N₅O₉P₂S).

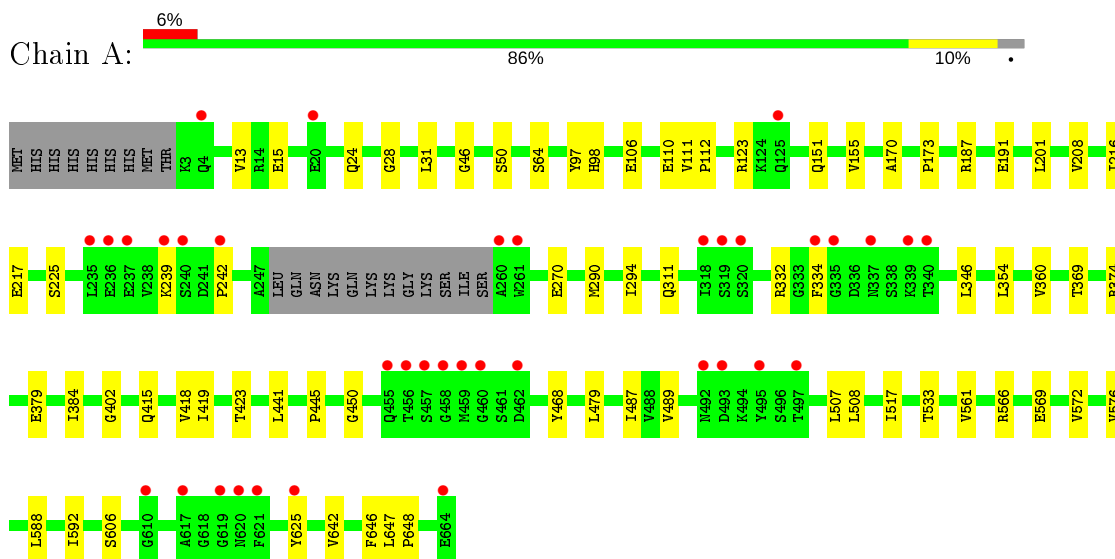


Mol	Chain	Residues	Atoms					ZeroOcc	AltConf	
			Total	C	N	O	P			S
2	A	1	Total	10	5	9	2	1	0	0
2	B	1	Total	10	5	9	2	1	0	0

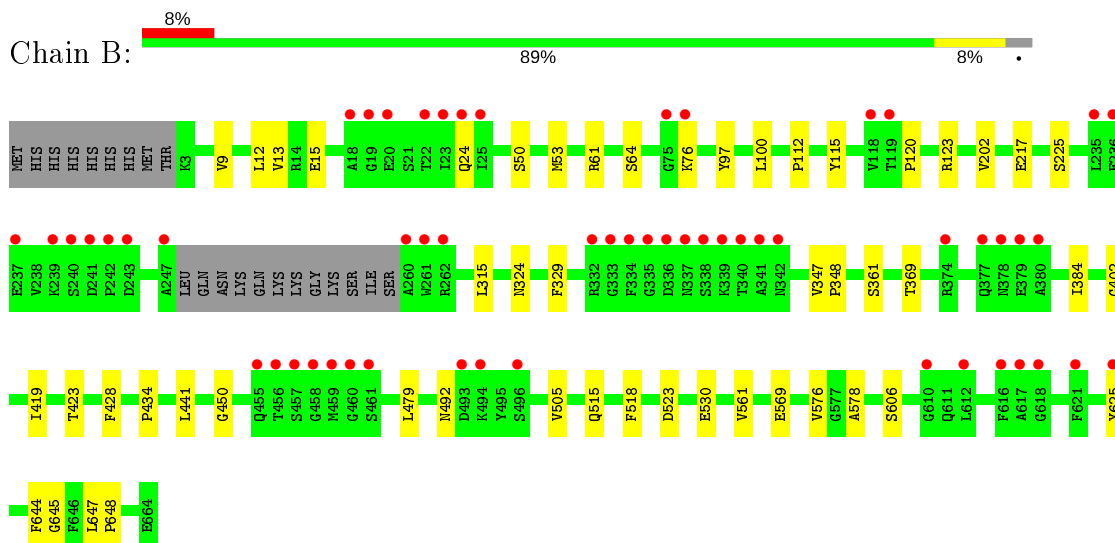
3 Residue-property plots [i](#)

These plots are drawn for all protein, RNA and DNA chains in the entry. The first graphic for a chain summarises the proportions of the various outlier classes displayed in the second graphic. The second graphic shows the sequence view annotated by issues in geometry and electron density. Residues are color-coded according to the number of geometric quality criteria for which they contain at least one outlier: green = 0, yellow = 1, orange = 2 and red = 3 or more. A red dot above a residue indicates a poor fit to the electron density ($RSRZ > 2$). Stretches of 2 or more consecutive residues without any outlier are shown as a green connector. Residues present in the sample, but not in the model, are shown in grey.

- Molecule 1: Macrolide export ATP-binding/permease protein MacB



- Molecule 1: Macrolide export ATP-binding/permease protein MacB



4 Data and refinement statistics

Property	Value	Source
Space group	P 41 21 2	Depositor
Cell constants a, b, c, α , β , γ	229.65Å 229.65Å 154.58Å 90.00° 90.00° 90.00°	Depositor
Resolution (Å)	49.12 – 3.40 49.11 – 3.40	Depositor EDS
% Data completeness (in resolution range)	81.2 (49.12-3.40) 81.3 (49.11-3.40)	Depositor EDS
R_{merge}	0.09	Depositor
R_{sym}	(Not available)	Depositor
$\langle I/\sigma(I) \rangle$ ¹	2.82 (at 3.40Å)	Xtrriage
Refinement program	PHENIX (1.11.1_2575: ???)	Depositor
R, R_{free}	0.227 , 0.257 0.233 , 0.262	Depositor DCC
R_{free} test set	2357 reflections (5.06%)	wwPDB-VP
Wilson B-factor (Å ²)	41.5	Xtrriage
Anisotropy	0.460	Xtrriage
Bulk solvent k_{sol} (e/Å ³), B_{sol} (Å ²)	0.30 , 43.9	EDS
L-test for twinning ²	$\langle L \rangle = 0.51$, $\langle L^2 \rangle = 0.34$	Xtrriage
Estimated twinning fraction	No twinning to report.	Xtrriage
F_o, F_c correlation	0.88	EDS
Total number of atoms	9824	wwPDB-VP
Average B, all atoms (Å ²)	62.0	wwPDB-VP

Xtrriage's analysis on translational NCS is as follows: *The analyses of the Patterson function reveals a significant off-origin peak that is 39.62 % of the origin peak, indicating pseudo-translational symmetry. The chance of finding a peak of this or larger height randomly in a structure without pseudo-translational symmetry is equal to 3.0907e-04. The detected translational NCS is most likely also responsible for the elevated intensity ratio.*

¹ Intensities estimated from amplitudes.

² Theoretical values of $\langle |L| \rangle$, $\langle L^2 \rangle$ for acentric reflections are 0.5, 0.333 respectively for untwinned datasets, and 0.375, 0.2 for perfectly twinned datasets.

5 Model quality [i](#)

5.1 Standard geometry [i](#)

Bond lengths and bond angles in the following residue types are not validated in this section: AT4

The Z score for a bond length (or angle) is the number of standard deviations the observed value is removed from the expected value. A bond length (or angle) with $|Z| > 5$ is considered an outlier worth inspection. RMSZ is the root-mean-square of all Z scores of the bond lengths (or angles).

Mol	Chain	Bond lengths		Bond angles	
		RMSZ	# Z >5	RMSZ	# Z >5
1	A	0.28	0/4945	0.52	0/6703
1	B	0.28	0/4945	0.51	0/6703
All	All	0.28	0/9890	0.52	0/13406

There are no bond length outliers.

There are no bond angle outliers.

There are no chirality outliers.

There are no planarity outliers.

5.2 Too-close contacts [i](#)

In the following table, the Non-H and H(model) columns list the number of non-hydrogen atoms and hydrogen atoms in the chain respectively. The H(added) column lists the number of hydrogen atoms added and optimized by MolProbity. The Clashes column lists the number of clashes within the asymmetric unit, whereas Symm-Clashes lists symmetry related clashes.

Mol	Chain	Non-H	H(model)	H(added)	Clashes	Symm-Clashes
1	A	4885	0	4973	41	0
1	B	4885	0	4973	28	0
2	A	27	0	13	4	0
2	B	27	0	13	2	0
All	All	9824	0	9972	69	0

The all-atom clashscore is defined as the number of clashes found per 1000 atoms (including hydrogen atoms). The all-atom clashscore for this structure is 3.

All (69) close contacts within the same asymmetric unit are listed below, sorted by their clash magnitude.

Atom-1	Atom-2	Interatomic distance (Å)	Clash overlap (Å)
1:B:50:SER:OG	2:B:701:AT4:O5'	2.03	0.76
1:B:324:ASN:ND2	1:B:523:ASP:OD2	2.22	0.72
1:B:13:VAL:HB	1:B:64:SER:HB3	1.70	0.71
1:A:50:SER:HG	2:A:801:AT4:C5'	2.06	0.68
1:A:402:GLY:HA3	1:A:450:GLY:HA2	1.77	0.67
1:A:13:VAL:HB	1:A:64:SER:HB3	1.76	0.67
1:A:170:ALA:HB1	1:A:173:PRO:HG3	1.80	0.63
1:A:15:GLU:HG2	1:A:24:GLN:HG2	1.81	0.63
1:B:369:THR:HB	1:B:479:LEU:HD21	1.81	0.63
1:B:644:PHE:N	1:B:645:GLY:HA3	2.15	0.61
1:A:217:GLU:HB3	1:A:225:SER:HB3	1.83	0.60
1:B:402:GLY:HA3	1:B:450:GLY:HA2	1.87	0.57
1:B:9:VAL:HG13	1:B:12:LEU:HG	1.87	0.56
1:A:170:ALA:HB1	1:A:173:PRO:CG	2.36	0.55
1:A:187:ARG:NH1	1:A:191:GLU:OE2	2.39	0.55
1:B:217:GLU:HB3	1:B:225:SER:HB3	1.90	0.53
1:B:606:SER:O	1:B:625:TYR:OH	2.21	0.53
1:A:112:PRO:HG3	1:A:576:VAL:HB	1.90	0.53
1:A:123:ARG:NH2	1:A:270:GLU:OE2	2.37	0.52
1:A:374:ARG:HG2	1:A:379:GLU:HG2	1.92	0.52
1:A:13:VAL:HG22	1:A:28:GLY:H	1.75	0.52
1:A:369:THR:HB	1:A:479:LEU:HD21	1.92	0.51
1:B:100:LEU:HD22	1:B:569:GLU:HG3	1.92	0.51
1:A:201:LEU:HD21	1:A:208:VAL:HG12	1.94	0.50
1:B:361:SER:HB3	1:B:492:ASN:HB3	1.94	0.49
1:A:98:HIS:HB3	1:A:572:VAL:HG21	1.96	0.48
1:A:46:GLY:HA2	2:A:801:AT4:O3'	2.13	0.48
1:B:112:PRO:HB3	1:B:576:VAL:HG13	1.95	0.48
1:A:354:LEU:HD23	1:A:507:LEU:HD23	1.95	0.47
1:B:329:PHE:HB2	1:B:518:PHE:CE2	2.49	0.47
1:A:106:GLU:O	1:A:110:GLU:HG3	2.14	0.47
1:A:419:ILE:HB	1:A:423:THR:OG1	2.14	0.47
2:B:701:AT4:H5'2	2:B:701:AT4:H8	1.97	0.47
1:A:508:LEU:HB2	1:A:517:ILE:HD13	1.96	0.47
1:B:115:TYR:CZ	1:B:578:ALA:HB2	2.50	0.47
1:B:315:LEU:HD11	1:B:530:GLU:HG2	1.97	0.47
1:B:120:PRO:O	1:B:123:ARG:HG2	2.15	0.46
1:A:647:LEU:HB3	1:A:648:PRO:HD3	1.97	0.46
1:B:384:ILE:HD11	1:B:441:LEU:HB3	1.97	0.45
1:B:15:GLU:HG2	1:B:24:GLN:HG2	1.96	0.45
1:B:428:PHE:CG	1:B:434:PRO:HG3	2.52	0.45
1:A:642:VAL:O	1:A:646:PHE:HB2	2.16	0.45

Continued on next page...

Continued from previous page...

Atom-1	Atom-2	Interatomic distance (Å)	Clash overlap (Å)
1:B:419:ILE:HB	1:B:423:THR:OG1	2.17	0.45
1:A:332:ARG:HG3	1:B:515:GLN:NE2	2.32	0.44
1:B:347:VAL:HB	1:B:348:PRO:HD2	1.99	0.44
1:B:505:VAL:HG11	1:B:515:GLN:HE22	1.82	0.44
1:A:290:MET:O	1:A:294:ILE:HG13	2.18	0.44
2:A:801:AT4:H4'	2:A:801:AT4:O1A	2.16	0.44
1:A:566:ARG:HD2	1:A:569:GLU:OE1	2.18	0.44
1:A:588:LEU:HD13	1:A:646:PHE:HA	1.99	0.44
1:B:53:MET:HB2	1:B:202:VAL:HG21	2.00	0.44
1:A:311:GLN:HB2	1:A:533:THR:HG21	1.99	0.44
1:A:592:ILE:HD11	1:A:642:VAL:HG22	2.00	0.44
1:B:647:LEU:HB3	1:B:648:PRO:HD3	2.00	0.43
1:B:61:ARG:HH21	1:B:76:LYS:HA	1.82	0.43
1:A:31:LEU:HD11	1:A:216:ILE:HD13	2.00	0.42
1:A:360:VAL:HG13	1:A:489:VAL:HG13	2.02	0.42
1:A:561:VAL:HG11	1:B:561:VAL:HG11	2.01	0.42
1:A:239:LYS:HE2	1:A:242:PRO:HA	2.01	0.42
1:A:384:ILE:HD11	1:A:441:LEU:HB3	2.02	0.41
1:A:415:GLN:NE2	1:A:445:PRO:O	2.46	0.41
1:A:111:VAL:HB	1:A:112:PRO:HD3	2.02	0.41
1:A:418:VAL:HB	1:A:468:TYR:HB2	2.03	0.41
1:A:151:GLN:O	1:A:155:VAL:HG23	2.21	0.41
1:A:50:SER:HG	2:A:801:AT4:PA	2.42	0.41
1:A:606:SER:O	1:A:625:TYR:OH	2.24	0.41
1:A:334:PHE:N	1:A:334:PHE:CD1	2.88	0.40
1:B:9:VAL:CG1	1:B:12:LEU:HG	2.50	0.40
1:A:346:LEU:HD11	1:A:487:ILE:HD12	2.04	0.40

There are no symmetry-related clashes.

5.3 Torsion angles [i](#)

5.3.1 Protein backbone [i](#)

In the following table, the Percentiles column shows the percent Ramachandran outliers of the chain as a percentile score with respect to all X-ray entries followed by that with respect to entries of similar resolution.

The Analysed column shows the number of residues for which the backbone conformation was analysed, and the total number of residues.

Mol	Chain	Analysed	Favoured	Allowed	Outliers	Percentiles	
1	A	646/671 (96%)	616 (95%)	30 (5%)	0	100	100
1	B	646/671 (96%)	618 (96%)	28 (4%)	0	100	100
All	All	1292/1342 (96%)	1234 (96%)	58 (4%)	0	100	100

There are no Ramachandran outliers to report.

5.3.2 Protein sidechains [i](#)

In the following table, the Percentiles column shows the percent sidechain outliers of the chain as a percentile score with respect to all X-ray entries followed by that with respect to entries of similar resolution.

The Analysed column shows the number of residues for which the sidechain conformation was analysed, and the total number of residues.

Mol	Chain	Analysed	Rotameric	Outliers	Percentiles	
1	A	538/558 (96%)	537 (100%)	1 (0%)	93	98
1	B	538/558 (96%)	537 (100%)	1 (0%)	93	98
All	All	1076/1116 (96%)	1074 (100%)	2 (0%)	93	98

All (2) residues with a non-rotameric sidechain are listed below:

Mol	Chain	Res	Type
1	A	97	TYR
1	B	97	TYR

Some sidechains can be flipped to improve hydrogen bonding and reduce clashes. All (1) such sidechains are listed below:

Mol	Chain	Res	Type
1	B	515	GLN

5.3.3 RNA [i](#)

There are no RNA molecules in this entry.

5.4 Non-standard residues in protein, DNA, RNA chains [i](#)

There are no non-standard protein/DNA/RNA residues in this entry.

5.5 Carbohydrates [i](#)

There are no carbohydrates in this entry.

5.6 Ligand geometry [i](#)

2 ligands are modelled in this entry.

In the following table, the Counts columns list the number of bonds (or angles) for which Mogul statistics could be retrieved, the number of bonds (or angles) that are observed in the model and the number of bonds (or angles) that are defined in the Chemical Component Dictionary. The Link column lists molecule types, if any, to which the group is linked. The Z score for a bond length (or angle) is the number of standard deviations the observed value is removed from the expected value. A bond length (or angle) with $|Z| > 2$ is considered an outlier worth inspection. RMSZ is the root-mean-square of all Z scores of the bond lengths (or angles).

Mol	Type	Chain	Res	Link	Bond lengths			Bond angles		
					Counts	RMSZ	# Z > 2	Counts	RMSZ	# Z > 2
2	AT4	A	801	-	22,29,29	3.51	9 (40%)	24,45,45	3.26	8 (33%)
2	AT4	B	701	-	22,29,29	3.53	10 (45%)	24,45,45	3.25	8 (33%)

In the following table, the Chirals column lists the number of chiral outliers, the number of chiral centers analysed, the number of these observed in the model and the number defined in the Chemical Component Dictionary. Similar counts are reported in the Torsion and Rings columns. '-' means no outliers of that kind were identified.

Mol	Type	Chain	Res	Link	Chirals	Torsions	Rings
2	AT4	A	801	-	-	4/10/32/32	0/3/3/3
2	AT4	B	701	-	-	4/10/32/32	0/3/3/3

All (19) bond length outliers are listed below:

Mol	Chain	Res	Type	Atoms	Z	Observed(Å)	Ideal(Å)
2	B	701	AT4	C2'-C3'	-9.01	1.28	1.53
2	A	801	AT4	C2'-C3'	-8.99	1.28	1.53
2	A	801	AT4	O4'-C1'	8.88	1.53	1.41
2	B	701	AT4	O4'-C1'	8.85	1.53	1.41
2	A	801	AT4	O4'-C4'	-6.85	1.29	1.45
2	B	701	AT4	O4'-C4'	-6.77	1.29	1.45
2	B	701	AT4	C3'-C4'	3.62	1.62	1.53
2	A	801	AT4	C3'-C4'	3.59	1.62	1.53
2	A	801	AT4	C6-N6	2.97	1.44	1.34
2	B	701	AT4	C6-N6	2.96	1.44	1.34

Continued on next page...

Continued from previous page...

Mol	Chain	Res	Type	Atoms	Z	Observed(Å)	Ideal(Å)
2	A	801	AT4	O2'-C2'	2.93	1.49	1.43
2	B	701	AT4	C5-C4	-2.92	1.33	1.40
2	A	801	AT4	C5-C4	-2.89	1.33	1.40
2	B	701	AT4	O2'-C2'	2.80	1.49	1.43
2	A	801	AT4	PA-O5'	2.53	1.69	1.59
2	B	701	AT4	PA-O5'	2.49	1.69	1.59
2	B	701	AT4	PB-O2B	-2.19	1.51	1.56
2	A	801	AT4	C2-N3	2.11	1.35	1.32
2	B	701	AT4	C2-N3	2.07	1.35	1.32

All (16) bond angle outliers are listed below:

Mol	Chain	Res	Type	Atoms	Z	Observed(°)	Ideal(°)
2	B	701	AT4	C5-C6-N6	10.39	136.15	120.35
2	A	801	AT4	C5-C6-N6	10.25	135.93	120.35
2	B	701	AT4	N6-C6-N1	-6.89	104.28	118.57
2	A	801	AT4	N6-C6-N1	-6.79	104.48	118.57
2	A	801	AT4	N3-C2-N1	-5.58	119.96	128.68
2	B	701	AT4	N3-C2-N1	-5.52	120.05	128.68
2	A	801	AT4	C3'-C2'-C1'	4.15	107.23	100.98
2	B	701	AT4	C3'-C2'-C1'	3.98	106.97	100.98
2	B	701	AT4	C5'-C4'-C3'	-3.82	100.87	115.18
2	A	801	AT4	C5'-C4'-C3'	-3.50	102.08	115.18
2	B	701	AT4	C2'-C3'-C4'	3.43	109.31	102.64
2	A	801	AT4	C2'-C3'-C4'	3.37	109.19	102.64
2	A	801	AT4	C1'-N9-C4	3.31	132.45	126.64
2	B	701	AT4	C1'-N9-C4	2.96	131.85	126.64
2	A	801	AT4	O4'-C4'-C3'	2.34	109.74	105.11
2	B	701	AT4	O4'-C4'-C3'	2.23	109.52	105.11

There are no chirality outliers.

All (8) torsion outliers are listed below:

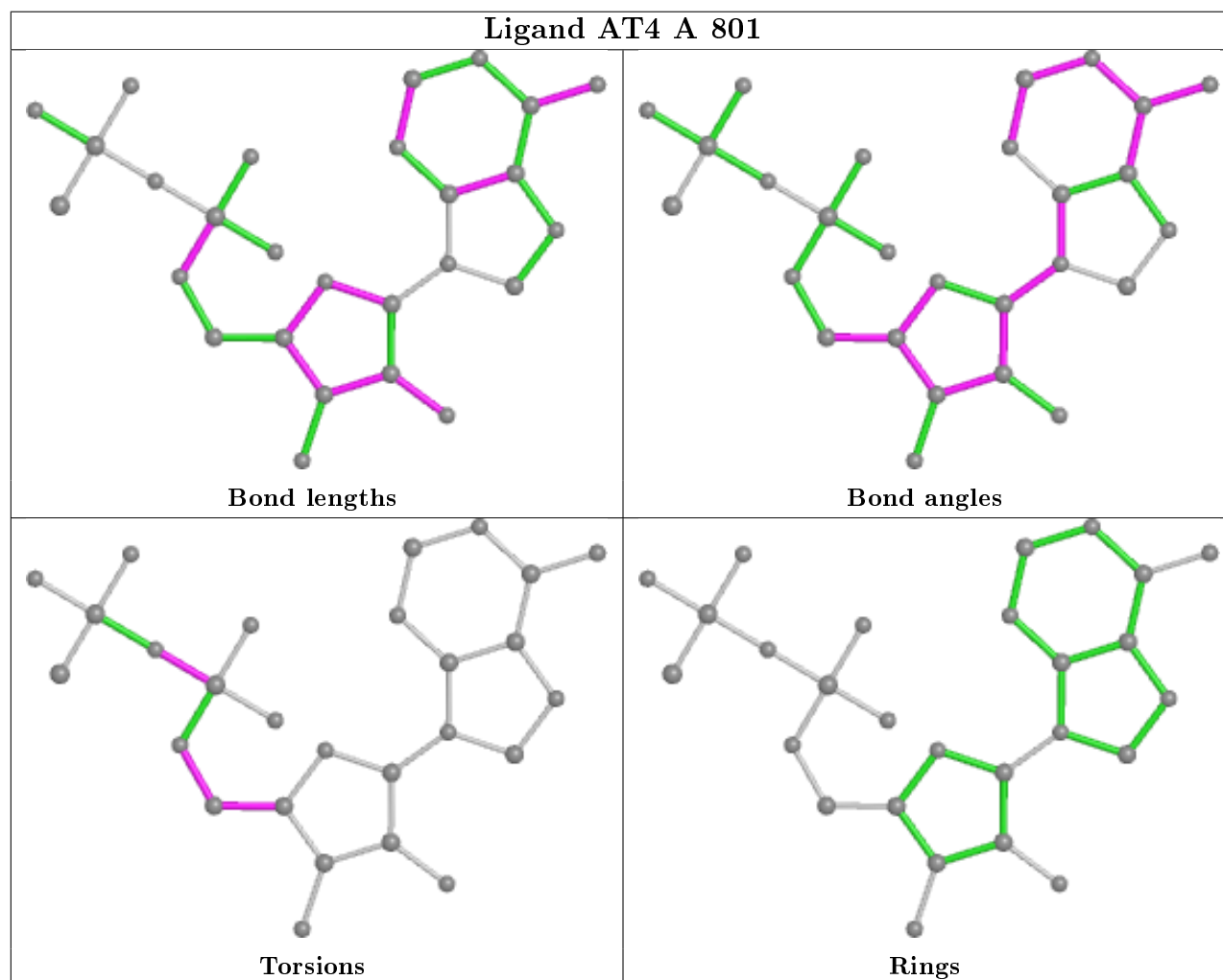
Mol	Chain	Res	Type	Atoms
2	A	801	AT4	C4'-C5'-O5'-PA
2	B	701	AT4	C4'-C5'-O5'-PA
2	A	801	AT4	O4'-C4'-C5'-O5'
2	A	801	AT4	C3'-C4'-C5'-O5'
2	B	701	AT4	O4'-C4'-C5'-O5'
2	B	701	AT4	C3'-C4'-C5'-O5'
2	A	801	AT4	PB-O3A-PA-O5'
2	B	701	AT4	PB-O3A-PA-O5'

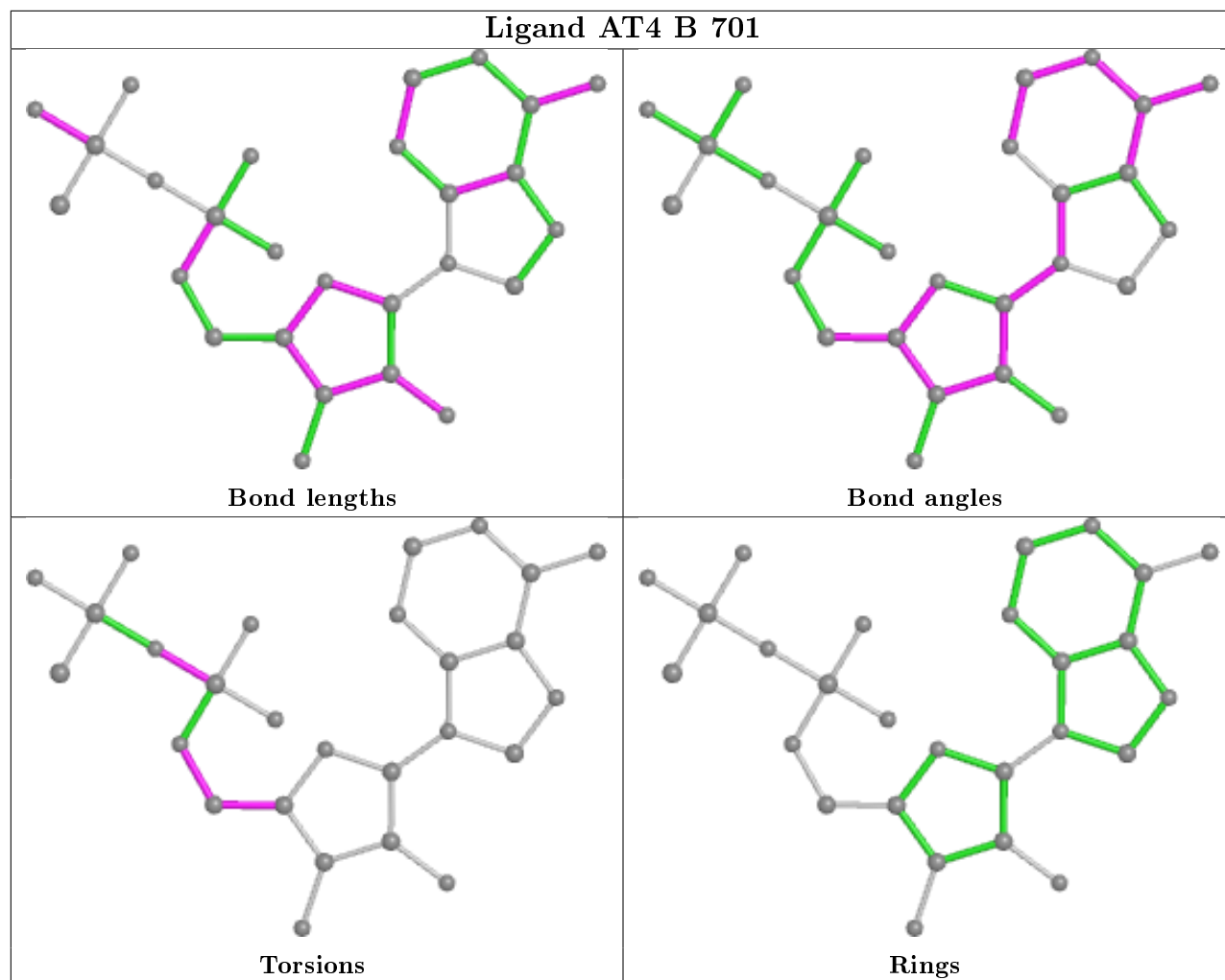
There are no ring outliers.

2 monomers are involved in 6 short contacts:

Mol	Chain	Res	Type	Clashes	Symm-Clashes
2	A	801	AT4	4	0
2	B	701	AT4	2	0

The following is a two-dimensional graphical depiction of Mogul quality analysis of bond lengths, bond angles, torsion angles, and ring geometry for all instances of the Ligand of Interest. In addition, ligands with molecular weight > 250 and outliers as shown on the validation Tables will also be included. For torsion angles, if less than 5% of the Mogul distribution of torsion angles is within 10 degrees of the torsion angle in question, then that torsion angle is considered an outlier. Any bond that is central to one or more torsion angles identified as an outlier by Mogul will be highlighted in the graph. For rings, the root-mean-square deviation (RMSD) between the ring in question and similar rings identified by Mogul is calculated over all ring torsion angles. If the average RMSD is greater than 60 degrees and the minimal RMSD between the ring in question and any Mogul-identified rings is also greater than 60 degrees, then that ring is considered an outlier. The outliers are highlighted in purple. The color gray indicates Mogul did not find sufficient equivalents in the CSD to analyse the geometry.





5.7 Other polymers [i](#)

There are no such residues in this entry.

5.8 Polymer linkage issues [i](#)

There are no chain breaks in this entry.

6 Fit of model and data

6.1 Protein, DNA and RNA chains

In the following table, the column labelled ‘#RSRZ > 2’ contains the number (and percentage) of RSRZ outliers, followed by percent RSRZ outliers for the chain as percentile scores relative to all X-ray entries and entries of similar resolution. The OWAB column contains the minimum, median, 95th percentile and maximum values of the occupancy-weighted average B-factor per residue. The column labelled ‘Q < 0.9’ lists the number of (and percentage) of residues with an average occupancy less than 0.9.

Mol	Chain	Analysed	<RSRZ>	#RSRZ > 2	OWAB(Å ²)	Q < 0.9
1	A	650/671 (96%)	0.11	37 (5%) 23 24	17, 49, 125, 184	0
1	B	650/671 (96%)	0.32	56 (8%) 10 12	21, 60, 142, 180	0
All	All	1300/1342 (96%)	0.21	93 (7%) 15 17	17, 55, 135, 184	0

All (93) RSRZ outliers are listed below:

Mol	Chain	Res	Type	RSRZ
1	B	337	ASN	8.5
1	B	457	SER	7.4
1	B	460	GLY	7.3
1	B	617	ALA	7.2
1	B	338	SER	7.2
1	A	260	ALA	6.9
1	B	336	ASP	6.9
1	B	333	GLY	6.8
1	B	260	ALA	6.3
1	B	461	SER	6.0
1	A	459	MET	5.4
1	A	456	THR	5.3
1	A	460	GLY	5.1
1	A	261	TRP	5.1
1	B	19	GLY	4.7
1	B	261	TRP	4.6
1	B	240	SER	4.5
1	A	239	LYS	4.5
1	B	456	THR	4.4
1	B	242	PRO	4.2
1	B	342	ASN	4.2
1	B	18	ALA	4.2
1	A	240	SER	4.1
1	B	339	LYS	4.1

Continued on next page...

Continued from previous page...

Mol	Chain	Res	Type	RSRZ
1	B	335	GLY	4.1
1	B	239	LYS	4.0
1	B	20	GLU	4.0
1	B	334	PHE	3.7
1	B	341	ALA	3.6
1	B	377	GLN	3.5
1	A	455	GLN	3.5
1	B	241	ASP	3.5
1	A	20	GLU	3.4
1	A	237	GLU	3.4
1	B	340	THR	3.3
1	A	493	ASP	3.3
1	B	378	ASN	3.3
1	B	494	LYS	3.2
1	B	459	MET	3.2
1	B	237	GLU	3.1
1	B	332	ARG	3.1
1	A	235	LEU	3.1
1	B	493	ASP	3.0
1	B	625	TYR	3.0
1	B	23	ILE	2.9
1	A	4	GLN	2.9
1	A	619	GLY	2.9
1	B	235	LEU	2.8
1	B	496	SER	2.7
1	A	492	ASN	2.7
1	A	334	PHE	2.7
1	B	119	THR	2.7
1	B	379	GLU	2.7
1	B	374	ARG	2.6
1	A	621	PHE	2.6
1	B	455	GLN	2.6
1	A	457	SER	2.6
1	B	75	GLY	2.6
1	B	618	GLY	2.6
1	A	337	ASN	2.6
1	B	458	GLY	2.5
1	A	495	TYR	2.5
1	B	380	ALA	2.5
1	B	118	VAL	2.5
1	A	458	GLY	2.5
1	B	243	ASP	2.5

Continued on next page...

Continued from previous page...

Mol	Chain	Res	Type	RSRZ
1	B	22	THR	2.5
1	B	616	PHE	2.4
1	A	664	GLU	2.4
1	A	320	SER	2.4
1	A	236	GLU	2.4
1	A	319	SER	2.4
1	B	610	GLY	2.3
1	B	621	PHE	2.3
1	B	24	GLN	2.3
1	A	335	GLY	2.3
1	A	620	ASN	2.3
1	A	242	PRO	2.3
1	B	76	LYS	2.3
1	B	612	LEU	2.3
1	A	462	ASP	2.2
1	A	340	THR	2.2
1	A	617	ALA	2.2
1	B	262	ARG	2.2
1	B	247	ALA	2.1
1	A	125	GLN	2.1
1	B	25	ILE	2.1
1	B	236	GLU	2.1
1	A	625	TYR	2.1
1	A	318	ILE	2.0
1	A	339	LYS	2.0
1	A	497	THR	2.0
1	A	610	GLY	2.0

6.2 Non-standard residues in protein, DNA, RNA chains [i](#)

There are no non-standard protein/DNA/RNA residues in this entry.

6.3 Carbohydrates [i](#)

There are no carbohydrates in this entry.

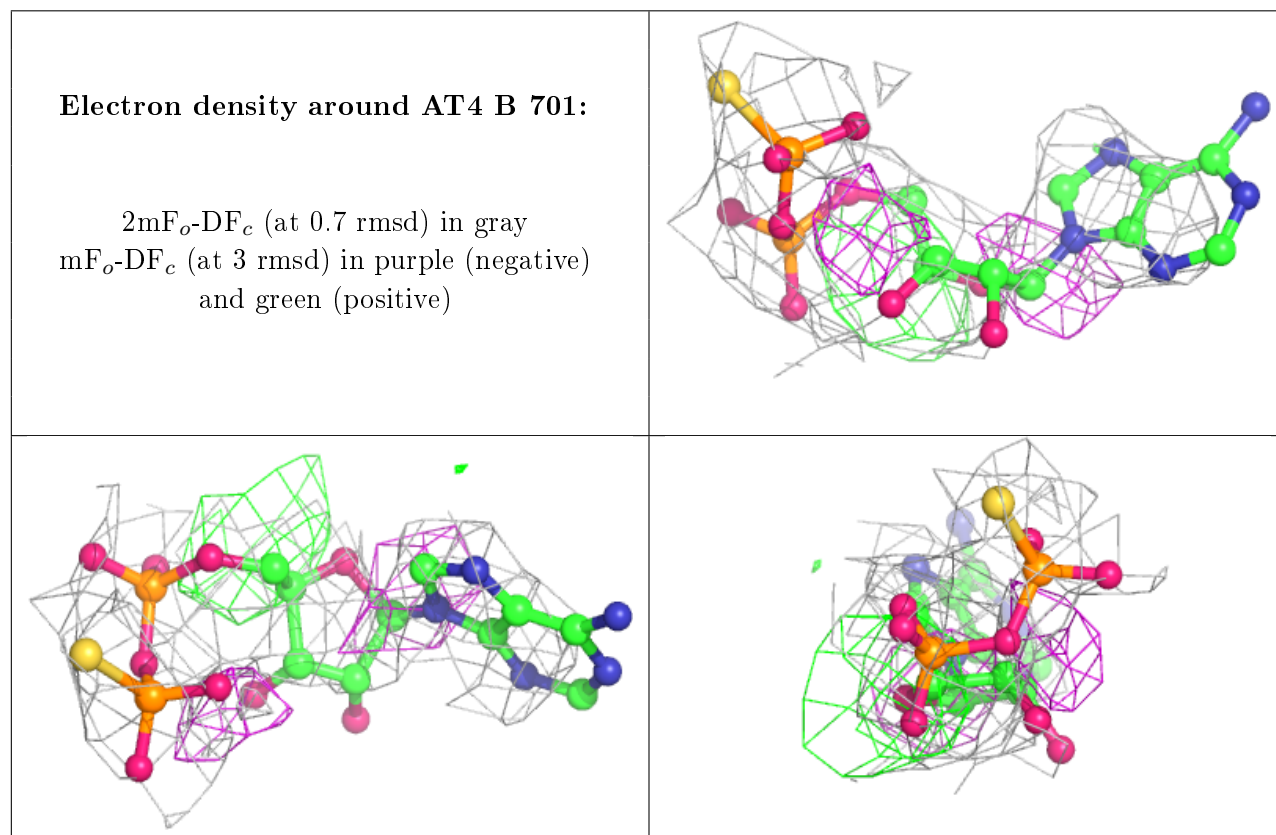
6.4 Ligands [i](#)

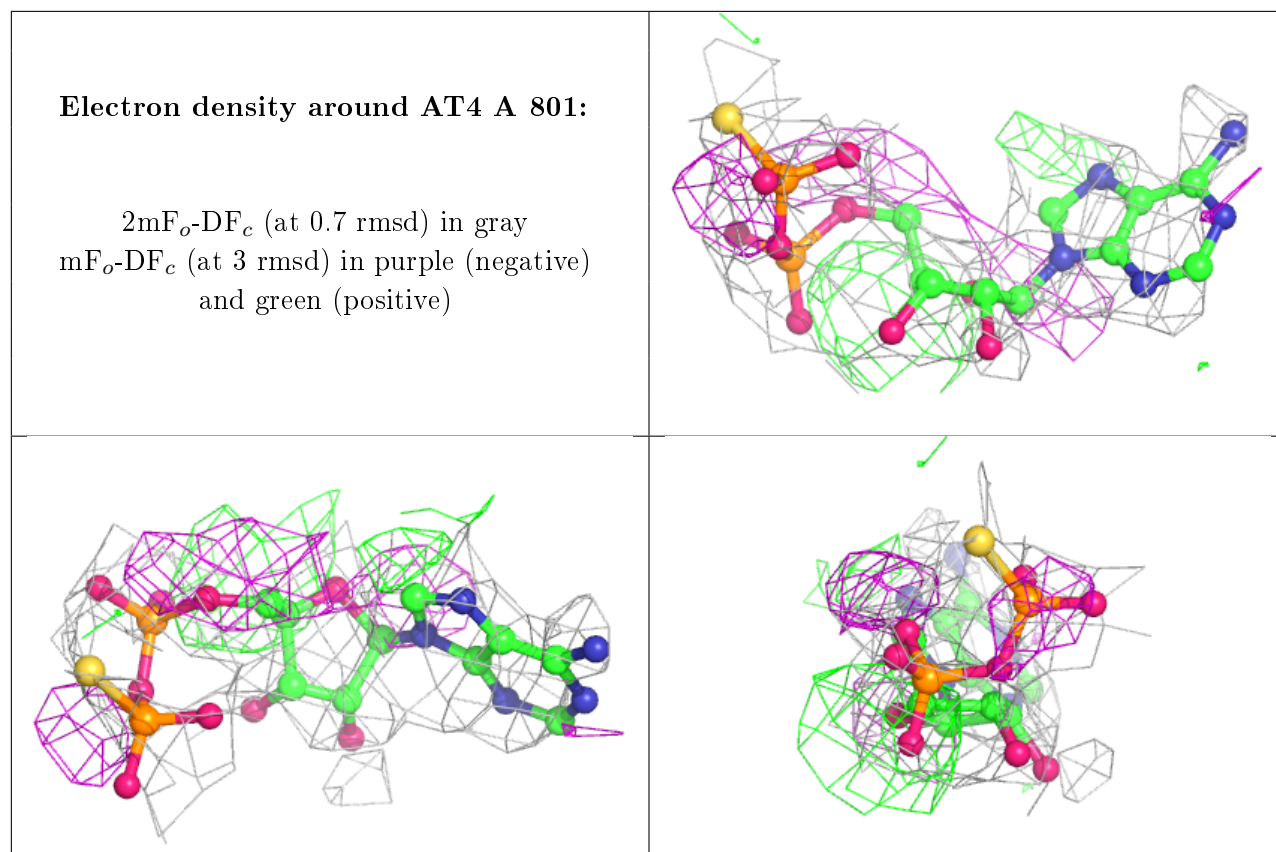
In the following table, the Atoms column lists the number of modelled atoms in the group and the number defined in the chemical component dictionary. The B-factors column lists the minimum,

median, 95th percentile and maximum values of B factors of atoms in the group. The column labelled 'Q< 0.9' lists the number of atoms with occupancy less than 0.9.

Mol	Type	Chain	Res	Atoms	RSCC	RSR	B-factors(Å ²)	Q<0.9
2	AT4	B	701	27/27	0.69	0.49	126,141,182,190	0
2	AT4	A	801	27/27	0.78	0.40	99,111,168,180	0

The following is a graphical depiction of the model fit to experimental electron density of all instances of the Ligand of Interest. In addition, ligands with molecular weight > 250 and outliers as shown on the geometry validation Tables will also be included. Each fit is shown from different orientation to approximate a three-dimensional view.





6.5 Other polymers [i](#)

There are no such residues in this entry.