



## Full wwPDB EM Validation Report ⓘ

Nov 12, 2024 – 02:58 AM JST

PDB ID : 8WVU  
EMDB ID : EMD-37869  
Title : Cryo-EM structure of LGR4 in complex with Rspo1 and RNF43  
Authors : Chang, Z.; Lin, C.  
Deposited on : 2023-10-24  
Resolution : 3.61 Å (reported)

This is a Full wwPDB EM Validation Report for a publicly released PDB entry.

We welcome your comments at [validation@mail.wwpdb.org](mailto:validation@mail.wwpdb.org)

A user guide is available at

<https://www.wwpdb.org/validation/2017/EMValidationReportHelp>

with specific help available everywhere you see the ⓘ symbol.

The types of validation reports are described at

<http://www.wwpdb.org/validation/2017/FAQs#types>.

---

The following versions of software and data (see [references ⓘ](#)) were used in the production of this report:

EMDB validation analysis : 0.0.1.dev113  
MolProbity : 4.02b-467  
Percentile statistics : 20231227.v01 (using entries in the PDB archive December 27th 2023)  
MapQ : 1.9.13  
Ideal geometry (proteins) : Engh & Huber (2001)  
Ideal geometry (DNA, RNA) : Parkinson et al. (1996)  
Validation Pipeline (wwPDB-VP) : 2.39

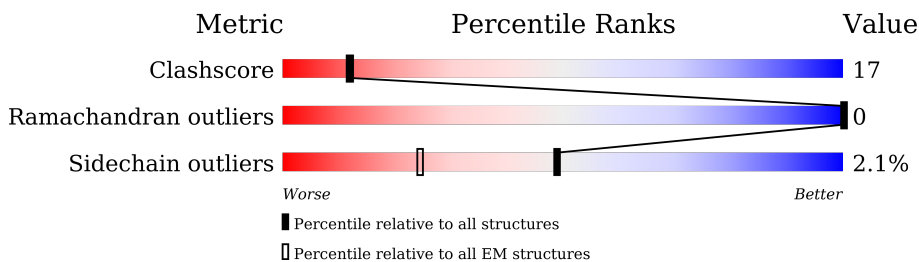
# 1 Overall quality at a glance i

The following experimental techniques were used to determine the structure:

*ELECTRON MICROSCOPY*

The reported resolution of this entry is 3.61 Å.

Percentile scores (ranging between 0-100) for global validation metrics of the entry are shown in the following graphic. The table shows the number of entries on which the scores are based.



Metric	Whole archive (#Entries)	EM structures (#Entries)
Clashscore	210492	15764
Ramachandran outliers	207382	16835
Sidechain outliers	206894	16415

The table below summarises the geometric issues observed across the polymeric chains and their fit to the map. The red, orange, yellow and green segments of the bar indicate the fraction of residues that contain outliers for  $\geq 3$ , 2, 1 and 0 types of geometric quality criteria respectively. A grey segment represents the fraction of residues that are not modelled. The numeric value for each fraction is indicated below the corresponding segment, with a dot representing fractions  $\leq 5\%$ . The upper red bar (where present) indicates the fraction of residues that have poor fit to the EM map (all-atom inclusion  $< 40\%$ ). The numeric value is given above the bar.

Mol	Chain	Length	Quality of chain
1	A	832	 7% 72% 16% 12%
2	B	121	 8% 60% 22% 16%
3	C	166	 28% 37% 40% 5% 17%

## 2 Entry composition i

There are 3 unique types of molecules in this entry. The entry contains 7427 atoms, of which 0 are hydrogens and 0 are deuteriums.

In the tables below, the AltConf column contains the number of residues with at least one atom in alternate conformation and the Trace column contains the number of residues modelled with at most 2 atoms.

- Molecule 1 is a protein called Leucine-rich repeat-containing G-protein coupled receptor 4.

Mol	Chain	Residues	Atoms					AltConf	Trace
			Total	C	N	O	S		
1	A	733	5714	3714	939	1033	28	0	0

There are 23 discrepancies between the modelled and reference sequences:

Chain	Residue	Modelled	Actual	Comment	Reference
A	1	MET	-	initiating methionine	UNP Q9BXB1
A	2	LYS	-	expression tag	UNP Q9BXB1
A	3	THR	-	expression tag	UNP Q9BXB1
A	4	ILE	-	expression tag	UNP Q9BXB1
A	5	ILE	-	expression tag	UNP Q9BXB1
A	6	ALA	-	expression tag	UNP Q9BXB1
A	7	LEU	-	expression tag	UNP Q9BXB1
A	8	SER	-	expression tag	UNP Q9BXB1
A	9	TYR	-	expression tag	UNP Q9BXB1
A	10	ILE	-	expression tag	UNP Q9BXB1
A	11	PHE	-	expression tag	UNP Q9BXB1
A	12	CYS	-	expression tag	UNP Q9BXB1
A	13	LEU	-	expression tag	UNP Q9BXB1
A	14	VAL	-	expression tag	UNP Q9BXB1
A	15	PHE	-	expression tag	UNP Q9BXB1
A	16	ALA	-	expression tag	UNP Q9BXB1
A	17	ASP	-	expression tag	UNP Q9BXB1
A	18	TYR	-	expression tag	UNP Q9BXB1
A	19	LYS	-	expression tag	UNP Q9BXB1
A	20	ASP	-	expression tag	UNP Q9BXB1
A	21	ASP	-	expression tag	UNP Q9BXB1
A	22	ASP	-	expression tag	UNP Q9BXB1
A	23	ASP	-	expression tag	UNP Q9BXB1

- Molecule 2 is a protein called R-spondin-1.

Mol	Chain	Residues	Atoms					AltConf	Trace
			Total	C	N	O	S		
2	B	102	771	476	135	142	18	0	0

There are 11 discrepancies between the modelled and reference sequences:

Chain	Residue	Modelled	Actual	Comment	Reference
B	145	ALA	-	expression tag	UNP Q2MKA7
B	146	ALA	-	expression tag	UNP Q2MKA7
B	147	ALA	-	expression tag	UNP Q2MKA7
B	148	HIS	-	expression tag	UNP Q2MKA7
B	149	HIS	-	expression tag	UNP Q2MKA7
B	150	HIS	-	expression tag	UNP Q2MKA7
B	151	HIS	-	expression tag	UNP Q2MKA7
B	152	HIS	-	expression tag	UNP Q2MKA7
B	153	HIS	-	expression tag	UNP Q2MKA7
B	154	HIS	-	expression tag	UNP Q2MKA7
B	155	HIS	-	expression tag	UNP Q2MKA7

- Molecule 3 is a protein called E3 ubiquitin-protein ligase RNF43.

Mol	Chain	Residues	Atoms					AltConf	Trace
			Total	C	N	O	S		
3	C	137	942	593	164	181	4	0	0

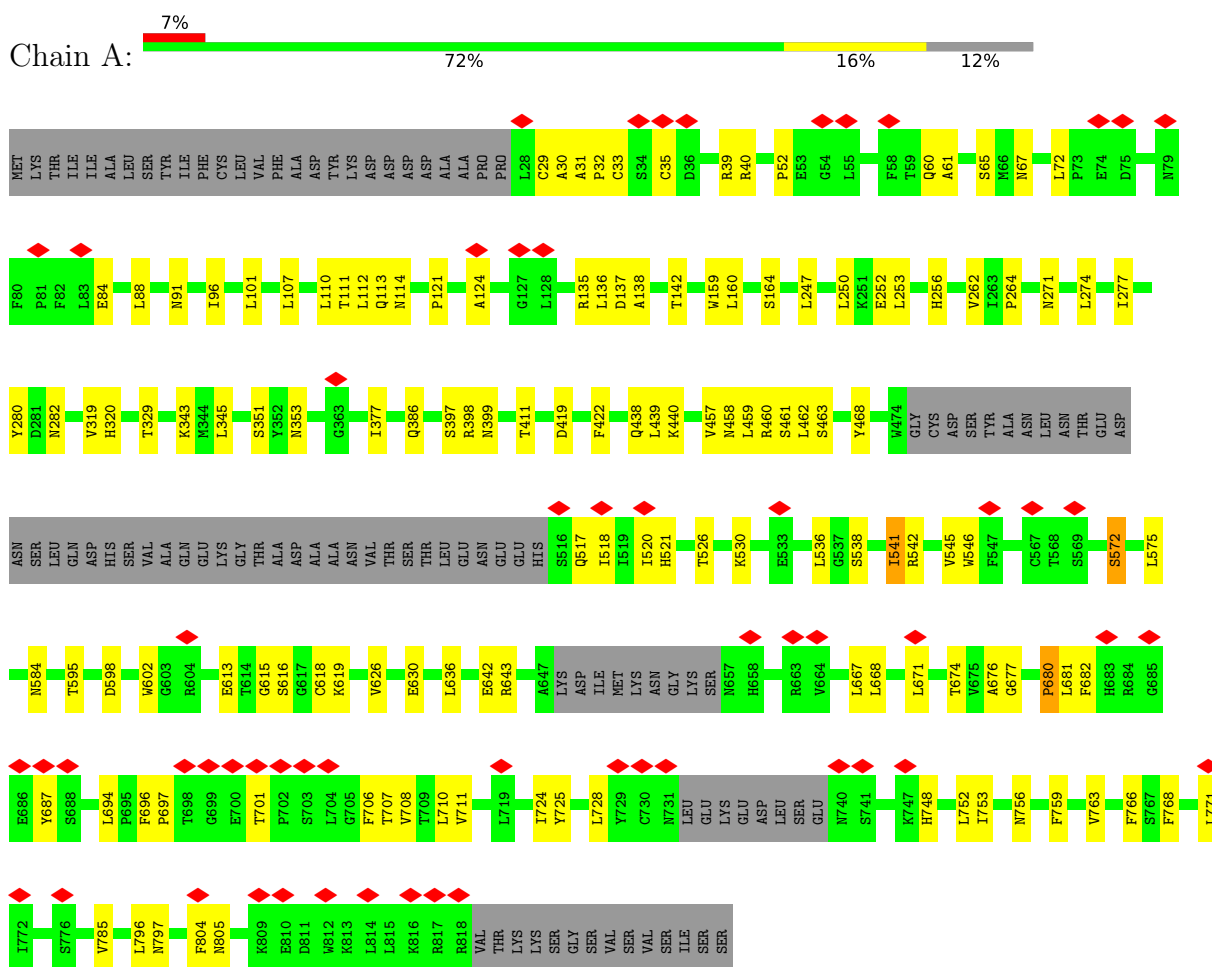
There are 11 discrepancies between the modelled and reference sequences:

Chain	Residue	Modelled	Actual	Comment	Reference
C	199	ALA	-	expression tag	UNP Q68DV7
C	200	ALA	-	expression tag	UNP Q68DV7
C	201	ALA	-	expression tag	UNP Q68DV7
C	202	HIS	-	expression tag	UNP Q68DV7
C	203	HIS	-	expression tag	UNP Q68DV7
C	204	HIS	-	expression tag	UNP Q68DV7
C	205	HIS	-	expression tag	UNP Q68DV7
C	206	HIS	-	expression tag	UNP Q68DV7
C	207	HIS	-	expression tag	UNP Q68DV7
C	208	HIS	-	expression tag	UNP Q68DV7
C	209	HIS	-	expression tag	UNP Q68DV7

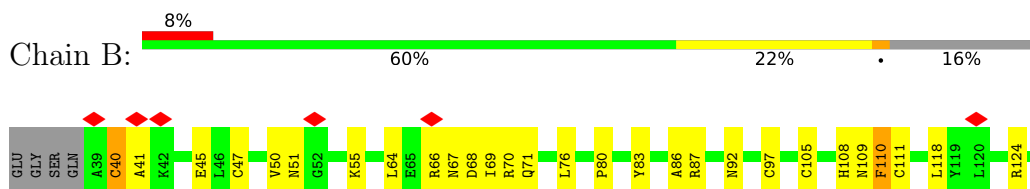
### 3 Residue-property plots i

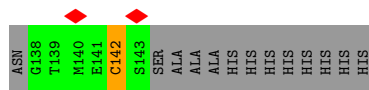
These plots are drawn for all protein, RNA, DNA and oligosaccharide chains in the entry. The first graphic for a chain summarises the proportions of the various outlier classes displayed in the second graphic. The second graphic shows the sequence view annotated by issues in geometry and atom inclusion in map density. Residues are color-coded according to the number of geometric quality criteria for which they contain at least one outlier: green = 0, yellow = 1, orange = 2 and red = 3 or more. A red diamond above a residue indicates a poor fit to the EM map for this residue (all-atom inclusion < 40%). Stretches of 2 or more consecutive residues without any outlier are shown as a green connector. Residues present in the sample, but not in the model, are shown in grey.

- Molecule 1: Leucine-rich repeat-containing G-protein coupled receptor 4

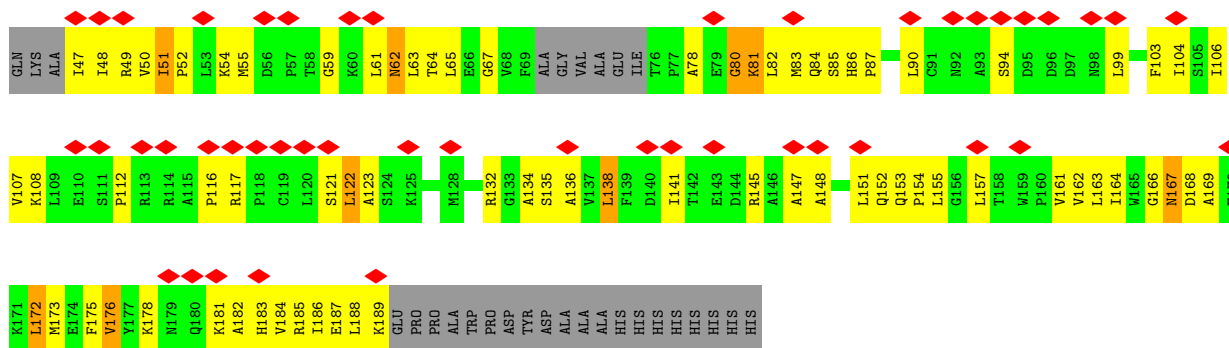


- Molecule 2: R-spondin-1





• Molecule 3: E3 ubiquitin-protein ligase RNF43



## 4 Experimental information

Property	Value	Source
EM reconstruction method	SINGLE PARTICLE	Depositor
Imposed symmetry	POINT, Not provided	
Number of particles used	124586	Depositor
Resolution determination method	FSC 0.143 CUT-OFF	Depositor
CTF correction method	PHASE FLIPPING AND AMPLITUDE CORRECTION	Depositor
Microscope	FEI TITAN KRIOS	Depositor
Voltage (kV)	300	Depositor
Electron dose ( $e^-/\text{\AA}^2$ )	63	Depositor
Minimum defocus (nm)	1000	Depositor
Maximum defocus (nm)	1800	Depositor
Magnification	Not provided	
Image detector	GATAN K2 SUMMIT (4k x 4k)	Depositor
Maximum map value	2.124	Depositor
Minimum map value	-0.002	Depositor
Average map value	0.001	Depositor
Map value standard deviation	0.024	Depositor
Recommended contour level	0.148	Depositor
Map size ( $\text{\AA}$ )	255.0, 255.0, 255.0	wwPDB
Map dimensions	300, 300, 300	wwPDB
Map angles ( $^\circ$ )	90.0, 90.0, 90.0	wwPDB
Pixel spacing ( $\text{\AA}$ )	0.85, 0.85, 0.85	Depositor

## 5 Model quality [i](#)

### 5.1 Standard geometry [i](#)

The Z score for a bond length (or angle) is the number of standard deviations the observed value is removed from the expected value. A bond length (or angle) with  $|Z| > 5$  is considered an outlier worth inspection. RMSZ is the root-mean-square of all Z scores of the bond lengths (or angles).

Mol	Chain	Bond lengths		Bond angles	
		RMSZ	# Z  >5	RMSZ	# Z  >5
1	A	0.47	2/5851 (0.0%)	0.58	3/7960 (0.0%)
2	B	0.72	3/786 (0.4%)	0.67	0/1053
3	C	0.93	5/954 (0.5%)	1.21	12/1307 (0.9%)
All	All	0.57	10/7591 (0.1%)	0.70	15/10320 (0.1%)

All (10) bond length outliers are listed below:

Mol	Chain	Res	Type	Atoms	Z	Observed(Å)	Ideal(Å)
3	C	117	ARG	C-N	10.30	1.53	1.34
2	B	86	ALA	C-N	9.00	1.54	1.34
3	C	112	PRO	C-N	8.86	1.54	1.34
3	C	86	HIS	C-N	8.28	1.50	1.34
1	A	694	LEU	C-N	7.82	1.49	1.34
3	C	51	ILE	C-N	6.81	1.47	1.34
1	A	572	SER	C-N	5.71	1.47	1.34
2	B	124	ARG	C-N	5.48	1.46	1.34
2	B	110	PHE	C-N	5.38	1.46	1.34
3	C	94	SER	C-N	-5.23	1.22	1.34

All (15) bond angle outliers are listed below:

Mol	Chain	Res	Type	Atoms	Z	Observed(°)	Ideal(°)
3	C	51	ILE	O-C-N	-12.87	96.64	121.10
3	C	51	ILE	CA-C-N	9.13	142.68	117.10
3	C	116	PRO	O-C-N	-8.64	108.88	122.70
3	C	51	ILE	C-N-CD	-8.30	102.34	120.60
3	C	81	LYS	O-C-N	-7.69	110.40	122.70
3	C	80	GLY	O-C-N	-7.12	111.31	122.70
3	C	90	LEU	O-C-N	6.45	133.02	122.70
3	C	90	LEU	CA-C-N	-6.24	103.48	117.20
1	A	461	SER	N-CA-CB	-6.05	101.42	110.50
3	C	51	ILE	C-N-CA	5.50	145.08	122.00
1	A	680	PRO	CA-N-CD	-5.49	103.82	111.50

*Continued on next page...*



Continued from previous page...

Mol	Chain	Res	Type	Atoms	Z	Observed(°)	Ideal(°)
3	C	116	PRO	CA-C-N	5.44	129.16	117.20
3	C	116	PRO	C-N-CA	5.32	135.01	121.70
3	C	81	LYS	C-N-CA	5.27	134.88	121.70
1	A	680	PRO	N-CD-CG	5.06	110.79	103.20

There are no chirality outliers.

There are no planarity outliers.

## 5.2 Too-close contacts [i](#)

In the following table, the Non-H and H(model) columns list the number of non-hydrogen atoms and hydrogen atoms in the chain respectively. The H(added) column lists the number of hydrogen atoms added and optimized by MolProbity. The Clashes column lists the number of clashes within the asymmetric unit, whereas Symm-Clashes lists symmetry-related clashes.

Mol	Chain	Non-H	H(model)	H(added)	Clashes	Symm-Clashes
1	A	5714	0	5756	97	0
2	B	771	0	737	40	0
3	C	942	0	897	139	0
All	All	7427	0	7390	252	0

The all-atom clashscore is defined as the number of clashes found per 1000 atoms (including hydrogen atoms). The all-atom clashscore for this structure is 17.

All (252) close contacts within the same asymmetric unit are listed below, sorted by their clash magnitude.

Atom-1	Atom-2	Interatomic distance (Å)	Clash overlap (Å)
2:B:66:ARG:NH2	3:C:99:LEU:HD11	1.10	1.42
2:B:51:ASN:ND2	3:C:87:PRO:CD	1.99	1.25
2:B:51:ASN:ND2	3:C:87:PRO:HD2	1.51	1.23
2:B:66:ARG:NH2	3:C:99:LEU:CD1	2.02	1.21
3:C:50:VAL:HB	3:C:62:ASN:HB3	1.23	1.13
3:C:54:LYS:HE3	3:C:183:HIS:HB2	1.24	1.11
2:B:66:ARG:HH22	3:C:99:LEU:CD1	1.60	1.10
3:C:49:ARG:HD2	3:C:61:LEU:HA	1.34	1.09
3:C:50:VAL:HG23	3:C:63:LEU:HB2	1.12	1.08
3:C:141:ILE:HD12	3:C:148:ALA:HB2	1.17	1.07
2:B:66:ARG:CZ	3:C:99:LEU:HD11	1.86	1.04
3:C:82:LEU:HD11	3:C:106:ILE:HB	1.41	1.02
2:B:51:ASN:ND2	3:C:87:PRO:HD3	1.73	1.01

Continued on next page...

*Continued from previous page...*

Atom-1	Atom-2	Interatomic distance (Å)	Clash overlap (Å)
3:C:48:ILE:H	3:C:65:LEU:HD23	1.25	1.00
1:A:677:GLY:O	1:A:680:PRO:HD2	1.66	0.96
2:B:69:ILE:HG12	3:C:182:ALA:HB3	1.49	0.93
3:C:51:ILE:HD12	3:C:187:GLU:HG3	1.48	0.93
3:C:54:LYS:HE3	3:C:183:HIS:CB	1.99	0.92
3:C:182:ALA:HB1	3:C:184:VAL:HG22	1.52	0.91
3:C:82:LEU:HB2	3:C:186:ILE:HG13	1.53	0.90
2:B:51:ASN:HD22	3:C:87:PRO:HD2	1.37	0.90
3:C:141:ILE:CD1	3:C:148:ALA:HB2	2.03	0.89
3:C:47:ILE:HG12	3:C:65:LEU:H	1.38	0.88
2:B:51:ASN:HD21	3:C:87:PRO:CD	1.73	0.88
2:B:66:ARG:HH22	3:C:99:LEU:HD11	1.02	0.83
3:C:48:ILE:HD13	3:C:138:LEU:HD13	1.60	0.83
3:C:141:ILE:HD12	3:C:148:ALA:CB	2.07	0.82
3:C:50:VAL:HB	3:C:62:ASN:CB	2.09	0.82
2:B:41:ALA:N	2:B:47:CYS:SG	2.52	0.82
3:C:141:ILE:HG22	3:C:147:ALA:HB3	1.61	0.82
3:C:82:LEU:CB	3:C:186:ILE:HG13	2.11	0.81
3:C:63:LEU:HG	3:C:65:LEU:HD21	1.63	0.80
3:C:104:ILE:HG12	3:C:136:ALA:HB3	1.64	0.80
1:A:458:ASN:HA	1:A:517:GLN:OE1	1.81	0.80
3:C:47:ILE:HB	3:C:189:LYS:CB	2.12	0.79
2:B:50:VAL:HG11	3:C:108:LYS:HZ3	1.46	0.79
2:B:51:ASN:HD21	3:C:87:PRO:HD2	1.26	0.79
2:B:108:HIS:ND1	2:B:109:ASN:OD1	2.15	0.79
3:C:155:LEU:HD22	3:C:161:VAL:HG22	1.64	0.78
3:C:50:VAL:CB	3:C:62:ASN:HB3	2.09	0.78
3:C:48:ILE:N	3:C:65:LEU:HD23	1.99	0.77
2:B:69:ILE:HD13	3:C:181:LYS:CB	2.14	0.77
3:C:48:ILE:O	3:C:63:LEU:HB3	1.86	0.76
3:C:85:SER:HB3	3:C:107:VAL:HG22	1.67	0.76
3:C:63:LEU:HD21	3:C:172:LEU:HD22	1.66	0.75
3:C:52:PRO:HA	3:C:185:ARG:H	1.51	0.74
3:C:83:MET:N	3:C:104:ILE:O	2.21	0.74
2:B:51:ASN:HD22	3:C:87:PRO:CD	1.89	0.73
1:A:748:HIS:CE1	1:A:805:ASN:HD21	2.06	0.73
3:C:173:MET:HA	3:C:176:VAL:HG13	1.72	0.71
1:A:459:LEU:HD21	1:A:462:LEU:HB2	1.73	0.71
1:A:630:GLU:HG3	1:A:676:ALA:CB	2.23	0.69
1:A:33:CYS:SG	1:A:52:PRO:HG3	2.31	0.69
3:C:164:ILE:HG21	3:C:169:ALA:CB	2.23	0.69

*Continued on next page...*

*Continued from previous page...*

Atom-1	Atom-2	Interatomic distance (Å)	Clash overlap (Å)
2:B:69:ILE:HG21	3:C:182:ALA:HB2	1.74	0.69
3:C:52:PRO:HB3	3:C:184:VAL:HG12	1.76	0.68
3:C:81:LYS:O	3:C:104:ILE:N	2.28	0.67
3:C:49:ARG:NH1	3:C:61:LEU:HB3	2.09	0.67
3:C:50:VAL:O	3:C:59:GLY:O	2.13	0.66
3:C:78:ALA:H	3:C:188:LEU:HD23	1.61	0.65
3:C:182:ALA:O	3:C:184:VAL:HG13	1.96	0.65
3:C:49:ARG:NH1	3:C:64:THR:HG22	2.11	0.65
3:C:49:ARG:HD3	3:C:63:LEU:O	1.97	0.64
1:A:697:PRO:HD3	1:A:707:THR:HG21	1.78	0.64
2:B:87:ARG:HH11	2:B:92:ASN:ND2	1.95	0.64
1:A:252:GLU:OE1	2:B:109:ASN:ND2	2.31	0.64
3:C:49:ARG:HB2	3:C:187:GLU:HB2	1.79	0.64
3:C:155:LEU:HG	3:C:157:LEU:O	1.97	0.64
1:A:724:ILE:O	1:A:728:LEU:HG	1.98	0.64
3:C:63:LEU:CG	3:C:65:LEU:HD21	2.27	0.64
1:A:114:ASN:ND2	1:A:138:ALA:HB3	2.13	0.64
2:B:50:VAL:HG11	3:C:108:LYS:NZ	2.12	0.64
1:A:671:LEU:O	1:A:674:THR:HG22	1.97	0.63
3:C:145:ARG:O	3:C:148:ALA:HB3	1.98	0.63
3:C:153:GLN:N	3:C:154:PRO:HD2	2.13	0.63
3:C:82:LEU:HD11	3:C:106:ILE:CB	2.23	0.63
3:C:49:ARG:CD	3:C:61:LEU:HA	2.19	0.62
3:C:48:ILE:CD1	3:C:138:LEU:HD13	2.30	0.62
1:A:419:ASP:HB2	1:A:440:LYS:HE3	1.82	0.62
1:A:542:ARG:HH22	1:A:602:TRP:HB2	1.64	0.62
1:A:677:GLY:C	1:A:680:PRO:HD2	2.20	0.61
1:A:31:ALA:O	1:A:32:PRO:C	2.38	0.61
2:B:45:GLU:HG3	2:B:55:LYS:O	2.00	0.61
3:C:47:ILE:HG12	3:C:65:LEU:N	2.12	0.60
3:C:47:ILE:HG23	3:C:64:THR:HA	1.82	0.60
1:A:386:GLN:HG3	1:A:411:THR:HG21	1.83	0.60
2:B:69:ILE:HG12	3:C:182:ALA:CB	2.27	0.60
3:C:47:ILE:O	3:C:189:LYS:N	2.35	0.60
3:C:82:LEU:HD13	3:C:138:LEU:HD11	1.82	0.59
1:A:636:LEU:HD21	1:A:753:ILE:HA	1.84	0.59
1:A:397:SER:OG	1:A:419:ASP:OD2	2.21	0.59
2:B:66:ARG:HA	2:B:71:GLN:HA	1.85	0.58
3:C:47:ILE:CG2	3:C:64:THR:HA	2.33	0.58
3:C:64:THR:O	3:C:65:LEU:HD13	2.03	0.58
2:B:66:ARG:HH22	3:C:99:LEU:HD13	1.60	0.58

*Continued on next page...*

*Continued from previous page...*

Atom-1	Atom-2	Interatomic distance (Å)	Clash overlap (Å)
1:A:31:ALA:O	1:A:33:CYS:N	2.37	0.58
1:A:247:LEU:O	1:A:271:ASN:ND2	2.36	0.58
1:A:766:PHE:CE2	1:A:785:VAL:HG11	2.39	0.58
3:C:173:MET:O	3:C:176:VAL:HG22	2.03	0.58
3:C:54:LYS:CE	3:C:183:HIS:HB2	2.16	0.58
3:C:103:PHE:O	3:C:134:ALA:HA	2.03	0.57
3:C:50:VAL:HG23	3:C:63:LEU:CB	2.08	0.57
1:A:329:THR:OG1	1:A:353:ASN:OD1	2.21	0.57
3:C:52:PRO:HA	3:C:185:ARG:N	2.19	0.57
1:A:29:CYS:SG	1:A:33:CYS:O	2.63	0.57
3:C:166:GLY:HA3	3:C:169:ALA:HB3	1.86	0.57
3:C:122:LEU:HD12	3:C:151:LEU:HD23	1.87	0.57
2:B:118:LEU:HD22	2:B:127:PRO:HA	1.88	0.56
3:C:50:VAL:CG2	3:C:63:LEU:HB2	2.08	0.56
1:A:457:VAL:O	1:A:517:GLN:NE2	2.39	0.56
1:A:107:LEU:HD21	1:A:110:LEU:HB2	1.88	0.55
1:A:113:GLN:O	1:A:137:ASP:O	2.24	0.55
1:A:101:LEU:HD23	1:A:124:ALA:HB1	1.88	0.55
3:C:64:THR:C	3:C:65:LEU:HD22	2.27	0.55
2:B:142:CYS:O	2:B:142:CYS:SG	2.64	0.55
1:A:630:GLU:HG3	1:A:676:ALA:HB1	1.89	0.54
1:A:256:HIS:HA	1:A:282:ASN:HD21	1.72	0.54
1:A:343:LYS:O	1:A:343:LYS:HG3	2.08	0.54
3:C:84:GLN:HA	3:C:106:ILE:HG23	1.90	0.54
3:C:104:ILE:CG1	3:C:136:ALA:HB3	2.35	0.54
3:C:188:LEU:HG	3:C:189:LYS:N	2.22	0.54
1:A:135:ARG:HG2	1:A:159:TRP:CE3	2.41	0.54
1:A:542:ARG:NE	1:A:598:ASP:OD2	2.41	0.54
3:C:188:LEU:HG	3:C:189:LYS:H	1.72	0.54
1:A:615:GLY:O	1:A:619:LYS:NZ	2.40	0.53
3:C:167:ASN:HD22	3:C:168:ASP:N	2.06	0.53
1:A:530:LYS:NZ	1:A:613:GLU:OE2	2.41	0.53
2:B:71:GLN:HB3	3:C:84:GLN:OE1	2.09	0.53
2:B:71:GLN:N	3:C:84:GLN:OE1	2.42	0.52
3:C:103:PHE:O	3:C:135:SER:N	2.39	0.52
1:A:280:TYR:O	1:A:282:ASN:ND2	2.43	0.52
1:A:468:TYR:OH	1:A:613:GLU:OE2	2.19	0.52
1:A:768:PHE:HA	1:A:771:LEU:HD23	1.91	0.52
3:C:169:ALA:O	3:C:172:LEU:HD23	2.10	0.52
2:B:66:ARG:CZ	3:C:99:LEU:CD1	2.67	0.52
3:C:155:LEU:HD13	3:C:161:VAL:HG21	1.92	0.52

*Continued on next page...*

*Continued from previous page...*

Atom-1	Atom-2	Interatomic distance (Å)	Clash overlap (Å)
1:A:30:ALA:HB1	1:A:32:PRO:HD2	1.92	0.51
1:A:377:ILE:HG12	1:A:399:ASN:HB3	1.93	0.51
1:A:40:ARG:HG2	1:A:61:ALA:HB3	1.92	0.51
1:A:706:PHE:CE2	1:A:710:LEU:HD11	2.46	0.51
1:A:759:PHE:HE2	1:A:796:LEU:HD22	1.75	0.51
1:A:113:GLN:O	1:A:114:ASN:ND2	2.43	0.51
3:C:121:SER:C	3:C:123:ALA:N	2.62	0.51
1:A:113:GLN:HG3	1:A:137:ASP:OD1	2.11	0.51
3:C:48:ILE:HD11	3:C:138:LEU:HD22	1.91	0.51
3:C:175:PHE:O	3:C:178:LYS:N	2.44	0.51
3:C:49:ARG:HB2	3:C:187:GLU:CB	2.40	0.50
1:A:114:ASN:HD22	1:A:138:ALA:HB3	1.76	0.50
3:C:148:ALA:HA	3:C:163:LEU:HD13	1.92	0.50
2:B:64:LEU:HB3	2:B:71:GLN:HE21	1.76	0.49
1:A:88:LEU:HD23	1:A:112:LEU:HD21	1.94	0.49
1:A:88:LEU:HD23	1:A:112:LEU:CD2	2.42	0.49
1:A:142:THR:HG22	1:A:164:SER:HB2	1.95	0.49
2:B:66:ARG:HG3	2:B:71:GLN:HB2	1.95	0.49
2:B:69:ILE:HG21	3:C:182:ALA:CB	2.43	0.49
3:C:50:VAL:O	3:C:62:ASN:HB3	2.13	0.49
1:A:460:ARG:CG	1:A:518:ILE:HD11	2.42	0.48
3:C:163:LEU:O	3:C:164:ILE:HD13	2.12	0.48
1:A:60:GLN:NE2	1:A:84:GLU:OE1	2.46	0.48
3:C:63:LEU:CD2	3:C:172:LEU:HD22	2.40	0.48
1:A:31:ALA:N	1:A:32:PRO:CD	2.77	0.48
3:C:47:ILE:HD13	3:C:64:THR:HA	1.96	0.48
3:C:155:LEU:HD13	3:C:161:VAL:CG2	2.43	0.48
1:A:31:ALA:C	1:A:33:CYS:N	2.66	0.48
2:B:105:CYS:HB2	2:B:110:PHE:O	2.14	0.48
1:A:766:PHE:HE2	1:A:785:VAL:HG11	1.77	0.48
1:A:680:PRO:HB2	1:A:687:TYR:CE1	2.49	0.48
3:C:65:LEU:N	3:C:65:LEU:HD22	2.28	0.47
1:A:438:GLN:HG2	1:A:440:LYS:HE2	1.97	0.47
3:C:61:LEU:C	3:C:63:LEU:H	2.18	0.47
3:C:67:GLY:CA	3:C:162:VAL:HG13	2.44	0.47
1:A:696:PHE:CZ	1:A:763:VAL:HG11	2.50	0.47
3:C:47:ILE:HG23	3:C:64:THR:CA	2.45	0.46
3:C:63:LEU:HD12	3:C:63:LEU:HA	1.83	0.46
3:C:152:GLN:O	3:C:153:GLN:C	2.53	0.46
3:C:141:ILE:CD1	3:C:148:ALA:CB	2.81	0.46
1:A:319:VAL:HG23	1:A:320:HIS:CD2	2.51	0.46

*Continued on next page...*

*Continued from previous page...*

Atom-1	Atom-2	Interatomic distance (Å)	Clash overlap (Å)
3:C:104:ILE:HG23	3:C:136:ALA:HB3	1.98	0.46
1:A:584:ASN:ND2	1:A:797:ASN:ND2	2.64	0.45
2:B:105:CYS:HA	2:B:111:CYS:HA	1.98	0.45
3:C:67:GLY:HA3	3:C:162:VAL:HG13	1.98	0.45
2:B:40:CYS:CA	2:B:47:CYS:SG	3.04	0.45
3:C:80:GLY:O	3:C:186:ILE:HB	2.17	0.45
3:C:61:LEU:C	3:C:63:LEU:N	2.70	0.45
1:A:460:ARG:CD	1:A:518:ILE:HD11	2.46	0.45
1:A:262:VAL:HG12	1:A:264:PRO:HD3	1.98	0.45
1:A:419:ASP:OD1	1:A:440:LYS:HB2	2.17	0.45
1:A:616:SER:HA	1:A:619:LYS:NZ	2.32	0.45
1:A:386:GLN:HA	1:A:411:THR:OG1	2.17	0.44
3:C:47:ILE:CG1	3:C:65:LEU:H	2.19	0.44
1:A:398:ARG:HE	1:A:422:PHE:HD2	1.66	0.44
1:A:520:ILE:HG22	1:A:521:HIS:N	2.33	0.44
3:C:122:LEU:HD12	3:C:151:LEU:CD2	2.47	0.44
1:A:626:VAL:HG11	1:A:677:GLY:HA2	2.00	0.44
3:C:83:MET:O	3:C:106:ILE:HG22	2.18	0.44
3:C:182:ALA:O	3:C:183:HIS:C	2.56	0.44
1:A:72:LEU:HD12	1:A:96:ILE:HG23	2.00	0.44
1:A:345:LEU:HD12	1:A:345:LEU:H	1.82	0.44
1:A:351:SER:O	1:A:353:ASN:ND2	2.51	0.43
1:A:616:SER:HA	1:A:619:LYS:HZ1	1.83	0.43
2:B:40:CYS:HA	2:B:47:CYS:SG	2.58	0.43
3:C:182:ALA:C	3:C:184:VAL:HG13	2.38	0.43
1:A:708:VAL:HA	1:A:711:VAL:HG12	1.99	0.43
3:C:50:VAL:O	3:C:62:ASN:CB	2.66	0.43
1:A:439:LEU:HB3	1:A:462:LEU:HD13	2.00	0.43
1:A:642:GLU:OE1	1:A:643:ARG:NH1	2.52	0.43
1:A:671:LEU:HD12	1:A:674:THR:CG2	2.48	0.43
2:B:66:ARG:HG3	2:B:70:ARG:O	2.19	0.43
3:C:82:LEU:HA	3:C:104:ILE:O	2.18	0.43
1:A:88:LEU:HB2	1:A:112:LEU:CD2	2.49	0.43
1:A:39:ARG:NH1	1:A:60:GLN:OE1	2.49	0.43
1:A:274:LEU:HD13	1:A:277:ILE:HD11	2.01	0.43
1:A:546:TRP:NE1	1:A:595:THR:OG1	2.52	0.43
3:C:52:PRO:HB3	3:C:184:VAL:CG1	2.45	0.43
3:C:155:LEU:HG	3:C:157:LEU:C	2.39	0.43
1:A:29:CYS:SG	1:A:35:CYS:N	2.92	0.43
1:A:121:PRO:HB2	1:A:124:ALA:HB3	2.00	0.43
3:C:123:ALA:HB2	3:C:151:LEU:HG	2.01	0.43

*Continued on next page...*

*Continued from previous page...*

Atom-1	Atom-2	Interatomic distance (Å)	Clash overlap (Å)
3:C:49:ARG:N	3:C:187:GLU:O	2.52	0.43
1:A:460:ARG:HG3	1:A:518:ILE:CG1	2.49	0.42
3:C:167:ASN:HD22	3:C:167:ASN:N	2.17	0.42
1:A:111:THR:O	1:A:112:LEU:HD23	2.20	0.42
1:A:250:LEU:HD21	1:A:253:LEU:HB2	2.00	0.42
1:A:748:HIS:HB2	1:A:804:PHE:HE2	1.83	0.42
3:C:49:ARG:HH12	3:C:64:THR:HG22	1.84	0.42
3:C:153:GLN:N	3:C:154:PRO:CD	2.83	0.42
3:C:173:MET:HA	3:C:176:VAL:CG1	2.47	0.42
1:A:526:THR:OG1	1:A:530:LYS:HB2	2.20	0.42
2:B:67:ASN:ND2	2:B:68:ASP:H	2.18	0.41
1:A:460:ARG:HD3	1:A:518:ILE:HD11	2.02	0.41
1:A:136:LEU:HB2	1:A:160:LEU:HD23	2.01	0.41
1:A:752:LEU:O	1:A:756:ASN:ND2	2.44	0.41
3:C:63:LEU:HG	3:C:65:LEU:CD2	2.42	0.41
1:A:65:SER:O	1:A:67:ASN:ND2	2.53	0.41
1:A:458:ASN:HA	1:A:517:GLN:CD	2.41	0.41
1:A:536:LEU:HD12	1:A:542:ARG:HG2	2.01	0.41
1:A:536:LEU:CD1	1:A:545:VAL:HG21	2.50	0.41
3:C:172:LEU:O	3:C:176:VAL:HG13	2.20	0.41
3:C:59:GLY:C	3:C:62:ASN:HB2	2.41	0.41
1:A:440:LYS:HA	1:A:463:SER:OG	2.21	0.41
2:B:80:PRO:HG2	2:B:83:TYR:CD1	2.56	0.41
3:C:173:MET:CA	3:C:176:VAL:HG13	2.48	0.41
3:C:63:LEU:HD22	3:C:172:LEU:HD13	2.03	0.41
3:C:155:LEU:C	3:C:157:LEU:N	2.73	0.41
1:A:538:SER:N	1:A:541:ILE:HD11	2.36	0.41
1:A:572:SER:O	1:A:575:LEU:HB3	2.21	0.41
3:C:59:GLY:HA2	3:C:62:ASN:HB2	2.02	0.40
3:C:82:LEU:CD1	3:C:138:LEU:HD11	2.49	0.40
3:C:141:ILE:HG21	3:C:148:ALA:N	2.37	0.40
3:C:132:ARG:C	3:C:134:ALA:N	2.75	0.40
1:A:67:ASN:O	1:A:91:ASN:HA	2.21	0.40
1:A:681:LEU:HD13	1:A:682:PHE:N	2.37	0.40

There are no symmetry-related clashes.



## 5.3 Torsion angles [i](#)

### 5.3.1 Protein backbone [i](#)

In the following table, the Percentiles column shows the percent Ramachandran outliers of the chain as a percentile score with respect to all PDB entries followed by that with respect to all EM entries.

The Analysed column shows the number of residues for which the backbone conformation was analysed, and the total number of residues.

Mol	Chain	Analysed	Favoured	Allowed	Outliers	Percentiles	
1	A	725/832 (87%)	700 (97%)	25 (3%)	0	100	100
2	B	98/121 (81%)	91 (93%)	7 (7%)	0	100	100
3	C	133/166 (80%)	108 (81%)	25 (19%)	0	100	100
All	All	956/1119 (85%)	899 (94%)	57 (6%)	0	100	100

There are no Ramachandran outliers to report.

### 5.3.2 Protein sidechains [i](#)

In the following table, the Percentiles column shows the percent sidechain outliers of the chain as a percentile score with respect to all PDB entries followed by that with respect to all EM entries.

The Analysed column shows the number of residues for which the sidechain conformation was analysed, and the total number of residues.

Mol	Chain	Analysed	Rotameric	Outliers	Percentiles	
1	A	643/730 (88%)	637 (99%)	6 (1%)	75	86
2	B	89/102 (87%)	85 (96%)	4 (4%)	23	52
3	C	90/137 (66%)	83 (92%)	7 (8%)	10	35
All	All	822/969 (85%)	805 (98%)	17 (2%)	49	70

All (17) residues with a non-rotameric sidechain are listed below:

Mol	Chain	Res	Type
1	A	541	ILE
1	A	618	CYS
1	A	667	LEU
1	A	668	LEU
1	A	701	THR

*Continued on next page...*



*Continued from previous page...*

Mol	Chain	Res	Type
1	A	725	TYR
2	B	40	CYS
2	B	76	LEU
2	B	97	CYS
2	B	142	CYS
3	C	55	MET
3	C	62	ASN
3	C	122	LEU
3	C	138	LEU
3	C	167	ASN
3	C	172	LEU
3	C	176	VAL

Sometimes sidechains can be flipped to improve hydrogen bonding and reduce clashes. All (23) such sidechains are listed below:

Mol	Chain	Res	Type
1	A	87	GLN
1	A	113	GLN
1	A	114	ASN
1	A	154	GLN
1	A	235	ASN
1	A	282	ASN
1	A	310	GLN
1	A	320	HIS
1	A	375	ASN
1	A	417	ASN
1	A	438	GLN
1	A	517	GLN
1	A	584	ASN
1	A	661	GLN
1	A	740	ASN
1	A	748	HIS
1	A	797	ASN
1	A	805	ASN
2	B	51	ASN
2	B	67	ASN
2	B	92	ASN
3	C	62	ASN
3	C	167	ASN

### 5.3.3 RNA [i](#)

There are no RNA molecules in this entry.

### 5.4 Non-standard residues in protein, DNA, RNA chains [i](#)

There are no non-standard protein/DNA/RNA residues in this entry.

### 5.5 Carbohydrates [i](#)

There are no oligosaccharides in this entry.

### 5.6 Ligand geometry [i](#)

There are no ligands in this entry.

### 5.7 Other polymers [i](#)

There are no such residues in this entry.

### 5.8 Polymer linkage issues [i](#)

There are no chain breaks in this entry.

## 6 Map visualisation [i](#)

This section contains visualisations of the EMDB entry EMD-37869. These allow visual inspection of the internal detail of the map and identification of artifacts.

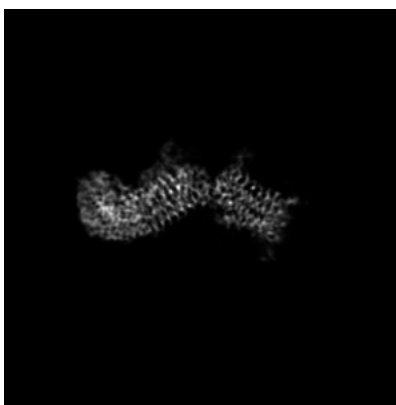
No raw map or half-maps were deposited for this entry and therefore no images, graphs, etc. pertaining to the raw map can be shown.

### 6.1 Orthogonal projections [i](#)

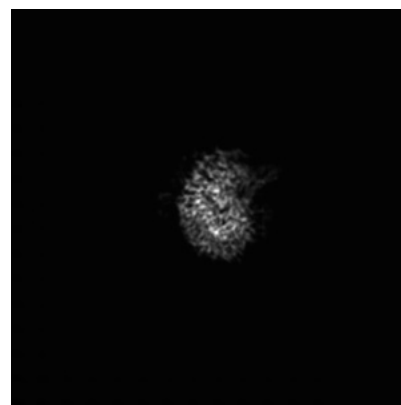
#### 6.1.1 Primary map



X



Y



Z

The images above show the map projected in three orthogonal directions.

### 6.2 Central slices [i](#)

#### 6.2.1 Primary map



X Index: 150



Y Index: 150



Z Index: 150

The images above show central slices of the map in three orthogonal directions.

## 6.3 Largest variance slices [\(i\)](#)

### 6.3.1 Primary map



X Index: 153



Y Index: 134

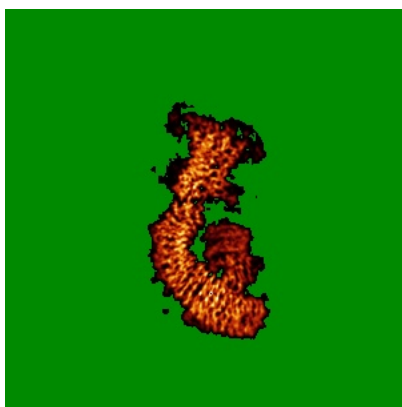


Z Index: 74

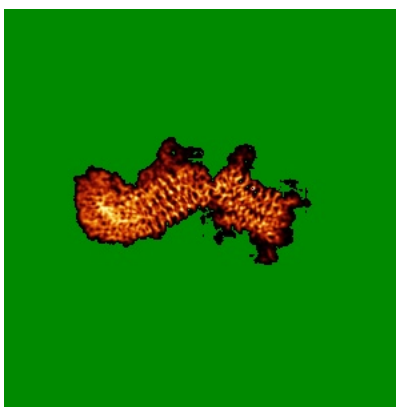
The images above show the largest variance slices of the map in three orthogonal directions.

## 6.4 Orthogonal standard-deviation projections (False-color) [\(i\)](#)

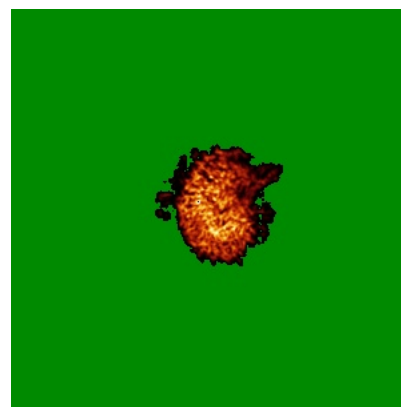
### 6.4.1 Primary map



X



Y

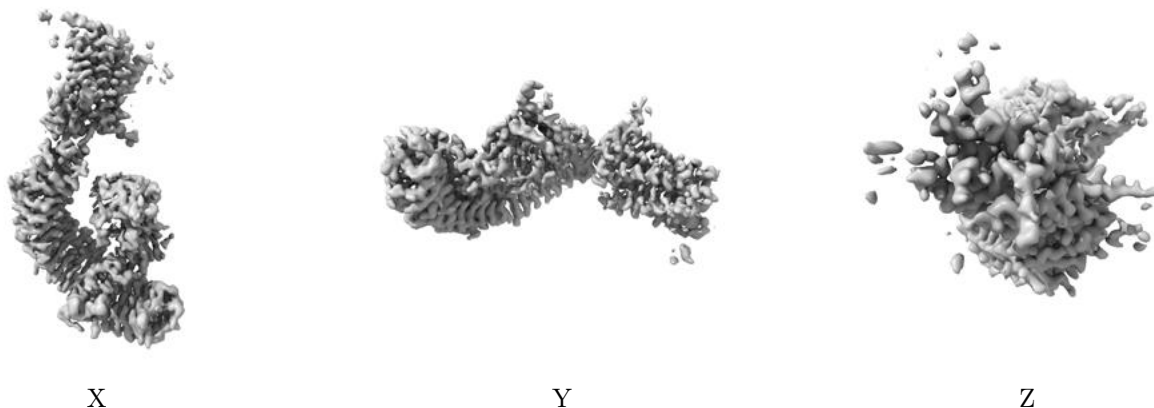


Z

The images above show the map standard deviation projections with false color in three orthogonal directions. Minimum values are shown in green, max in blue, and dark to light orange shades represent small to large values respectively.

## 6.5 Orthogonal surface views [i](#)

### 6.5.1 Primary map



The images above show the 3D surface view of the map at the recommended contour level 0.148. These images, in conjunction with the slice images, may facilitate assessment of whether an appropriate contour level has been provided.

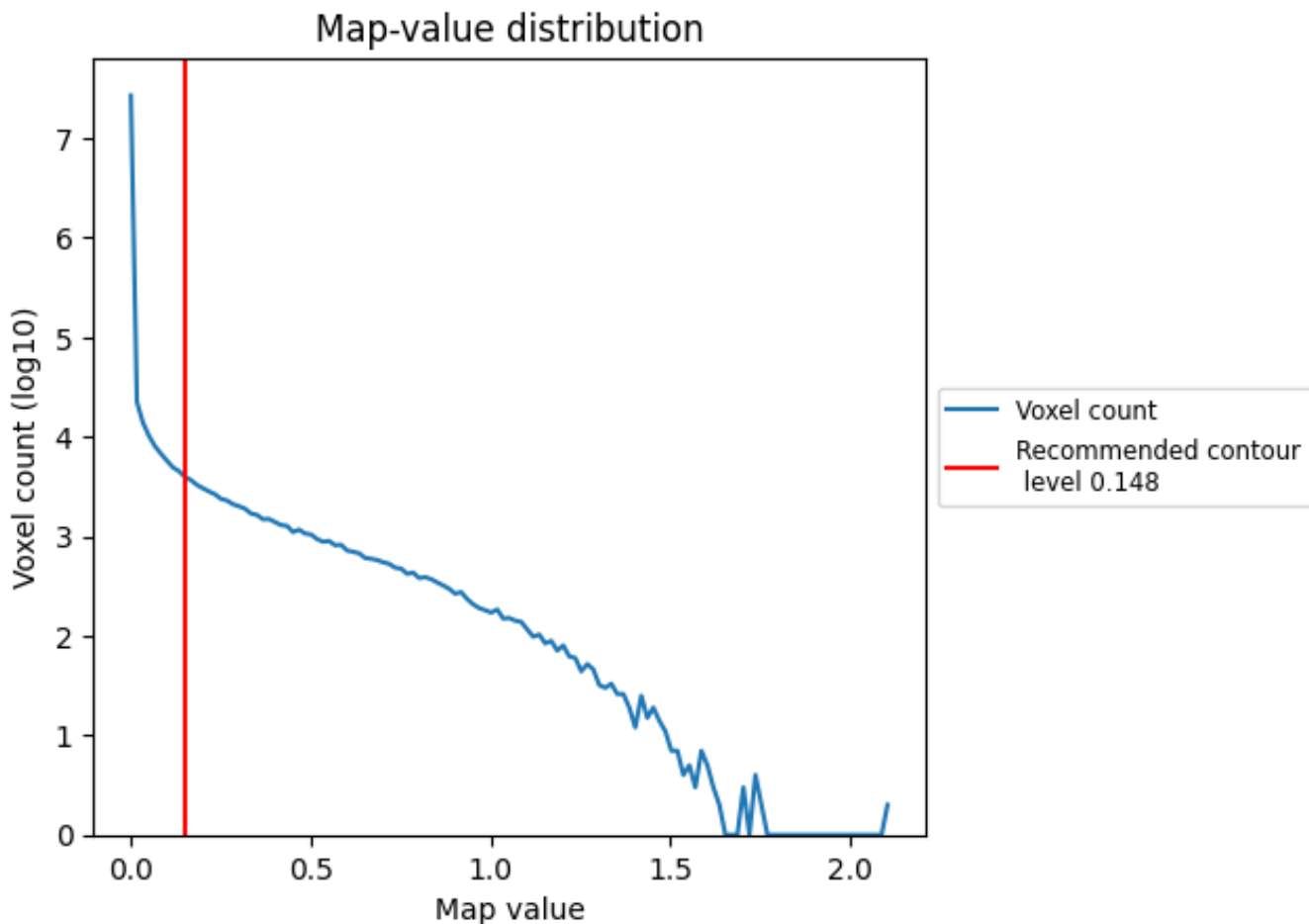
## 6.6 Mask visualisation [i](#)

This section was not generated. No masks/segmentation were deposited.

## 7 Map analysis [i](#)

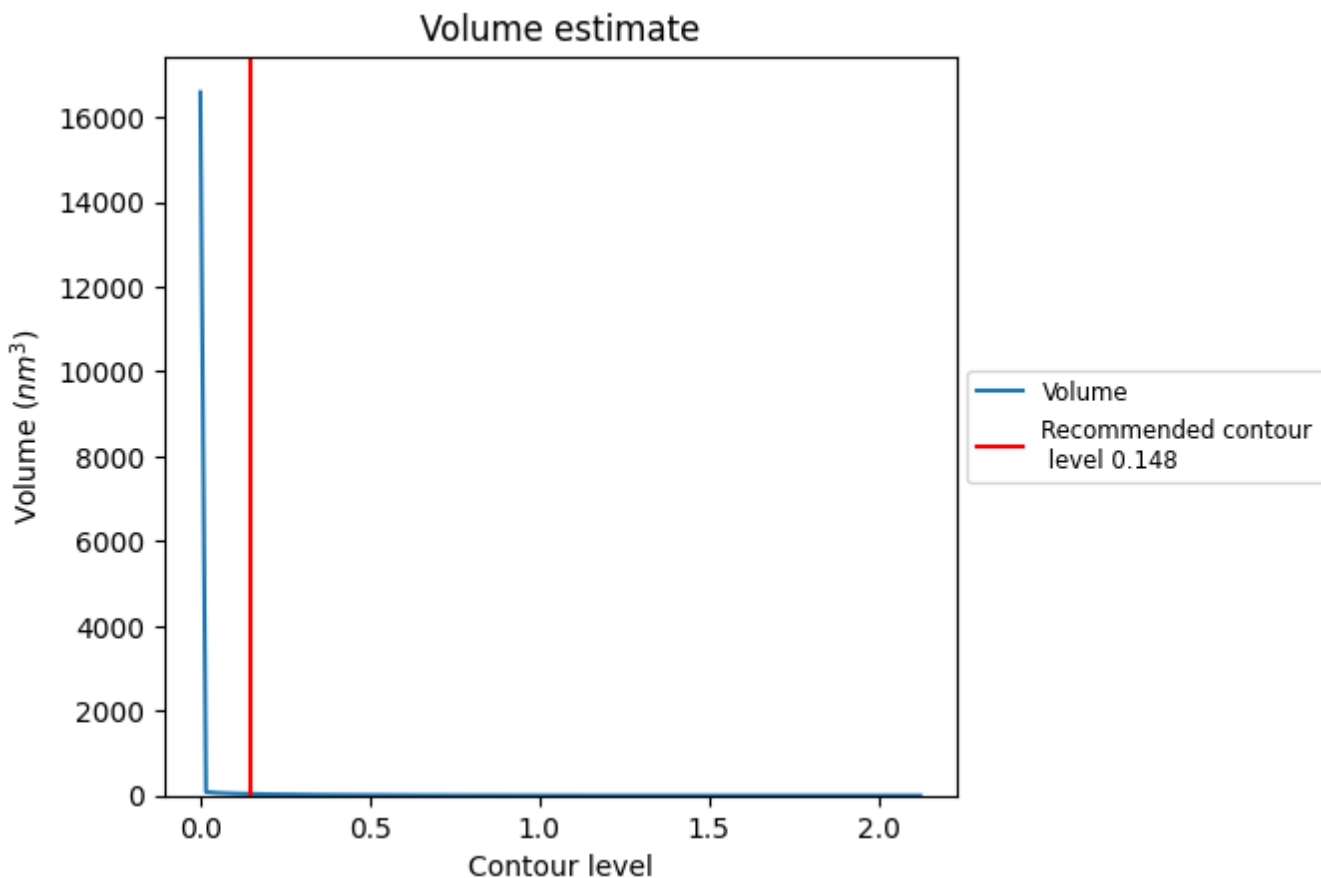
This section contains the results of statistical analysis of the map.

### 7.1 Map-value distribution [i](#)



The map-value distribution is plotted in 128 intervals along the x-axis. The y-axis is logarithmic. A spike in this graph at zero usually indicates that the volume has been masked.

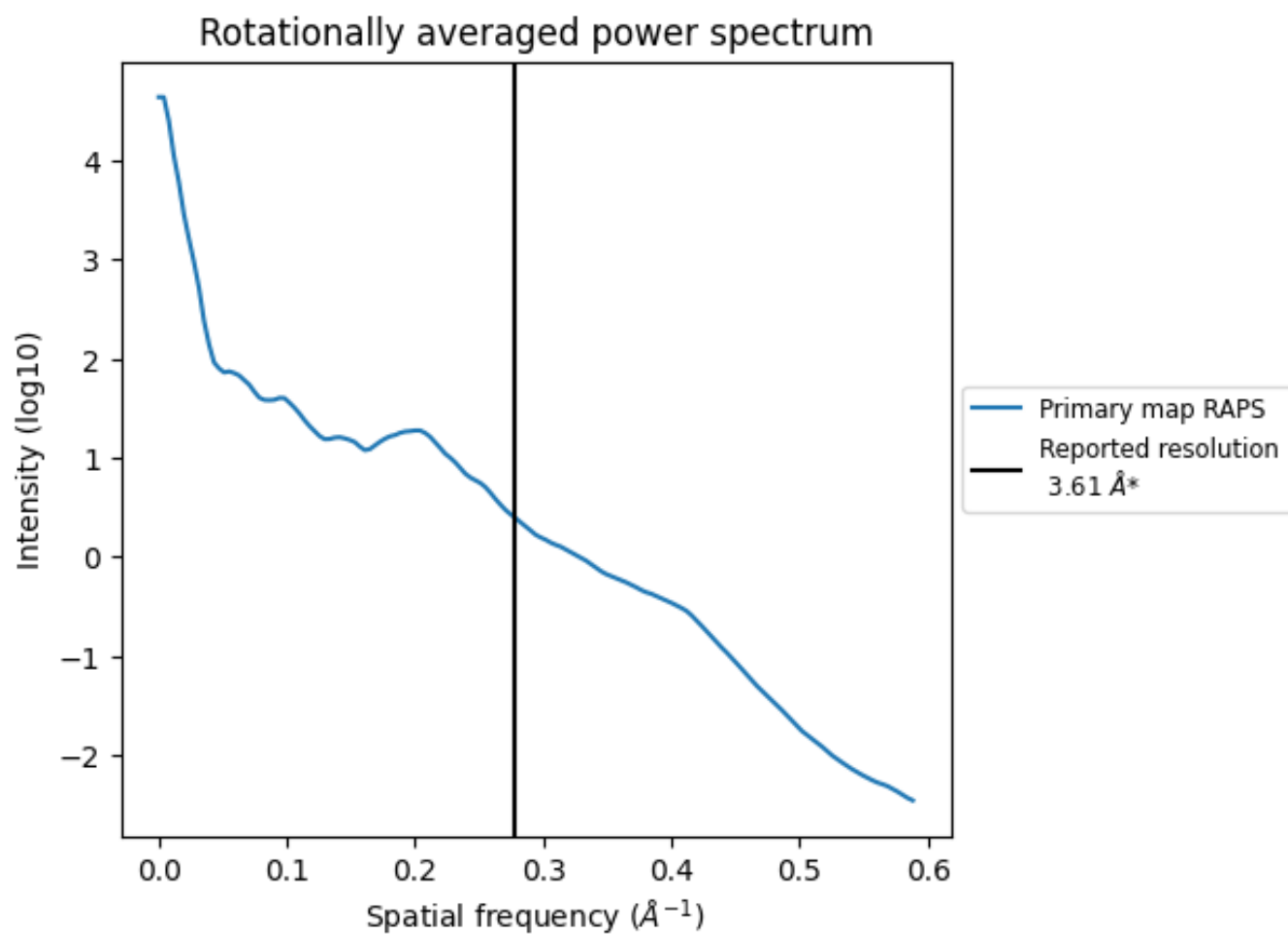
## 7.2 Volume estimate [i](#)



The volume at the recommended contour level is 38  $\text{nm}^3$ ; this corresponds to an approximate mass of 34 kDa.

The volume estimate graph shows how the enclosed volume varies with the contour level. The recommended contour level is shown as a vertical line and the intersection between the line and the curve gives the volume of the enclosed surface at the given level.

### 7.3 Rotationally averaged power spectrum [i](#)



\*Reported resolution corresponds to spatial frequency of 0.277 Å<sup>-1</sup>



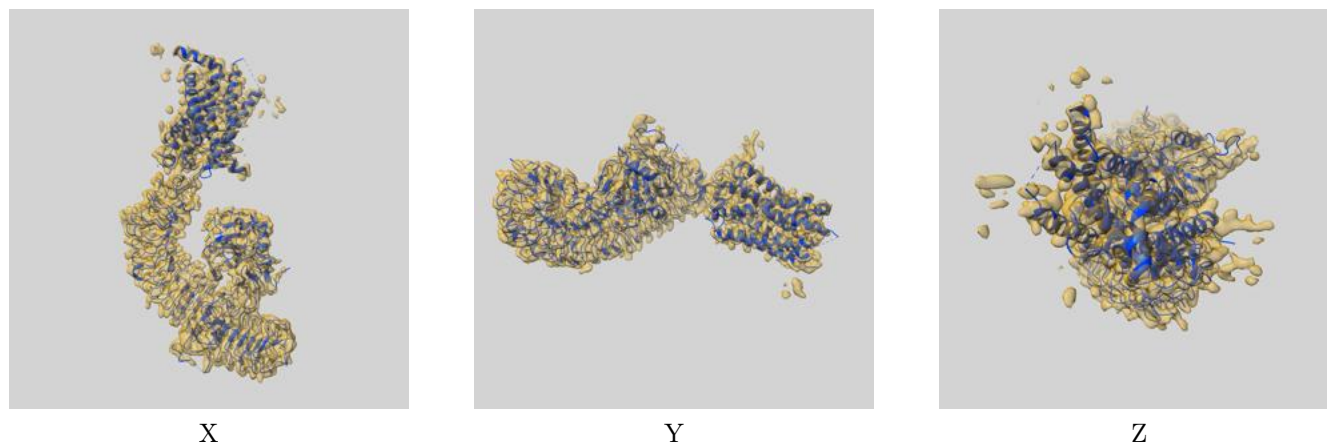
## 8 Fourier-Shell correlation

This section was not generated. No FSC curve or half-maps provided.

## 9 Map-model fit [i](#)

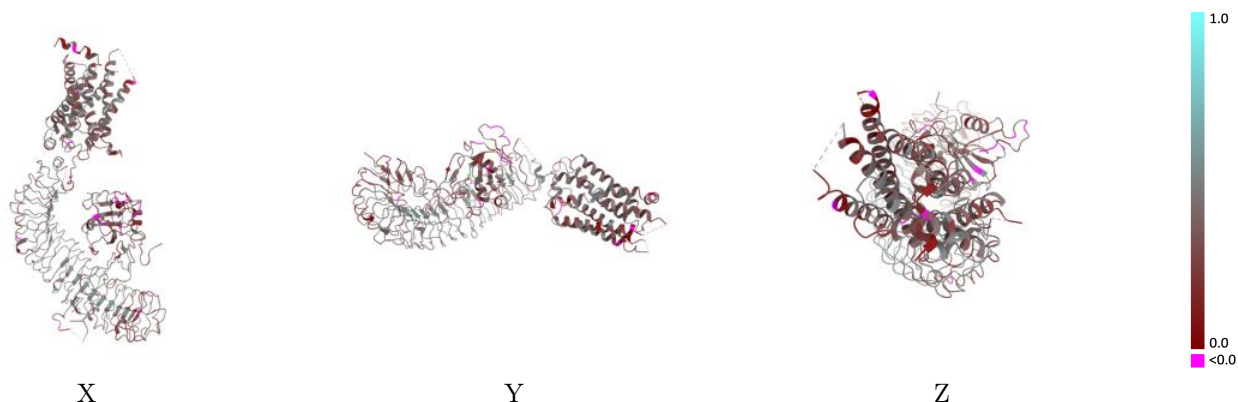
This section contains information regarding the fit between EMDB map EMD-37869 and PDB model 8WVU. Per-residue inclusion information can be found in section 3 on page 5.

### 9.1 Map-model overlay [i](#)



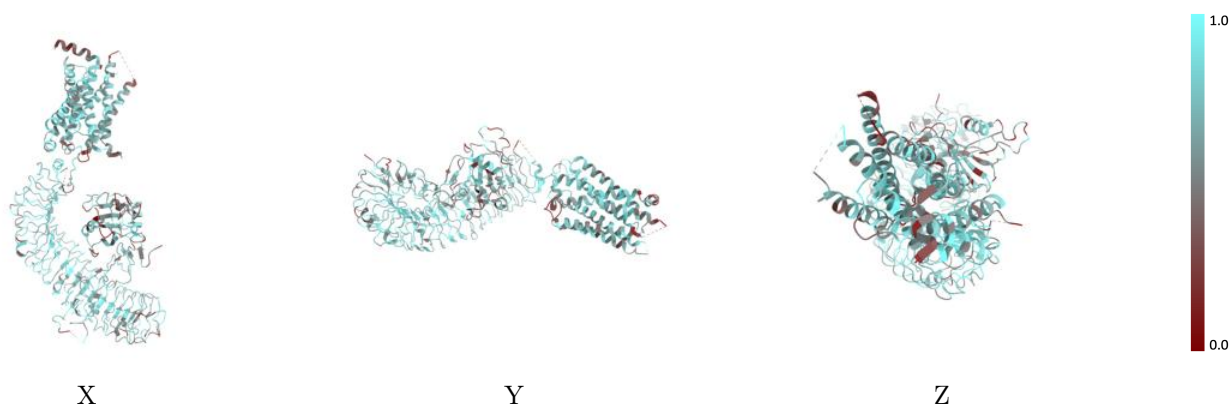
The images above show the 3D surface view of the map at the recommended contour level 0.148 at 50% transparency in yellow overlaid with a ribbon representation of the model coloured in blue. These images allow for the visual assessment of the quality of fit between the atomic model and the map.

## 9.2 Q-score mapped to coordinate model [\(i\)](#)



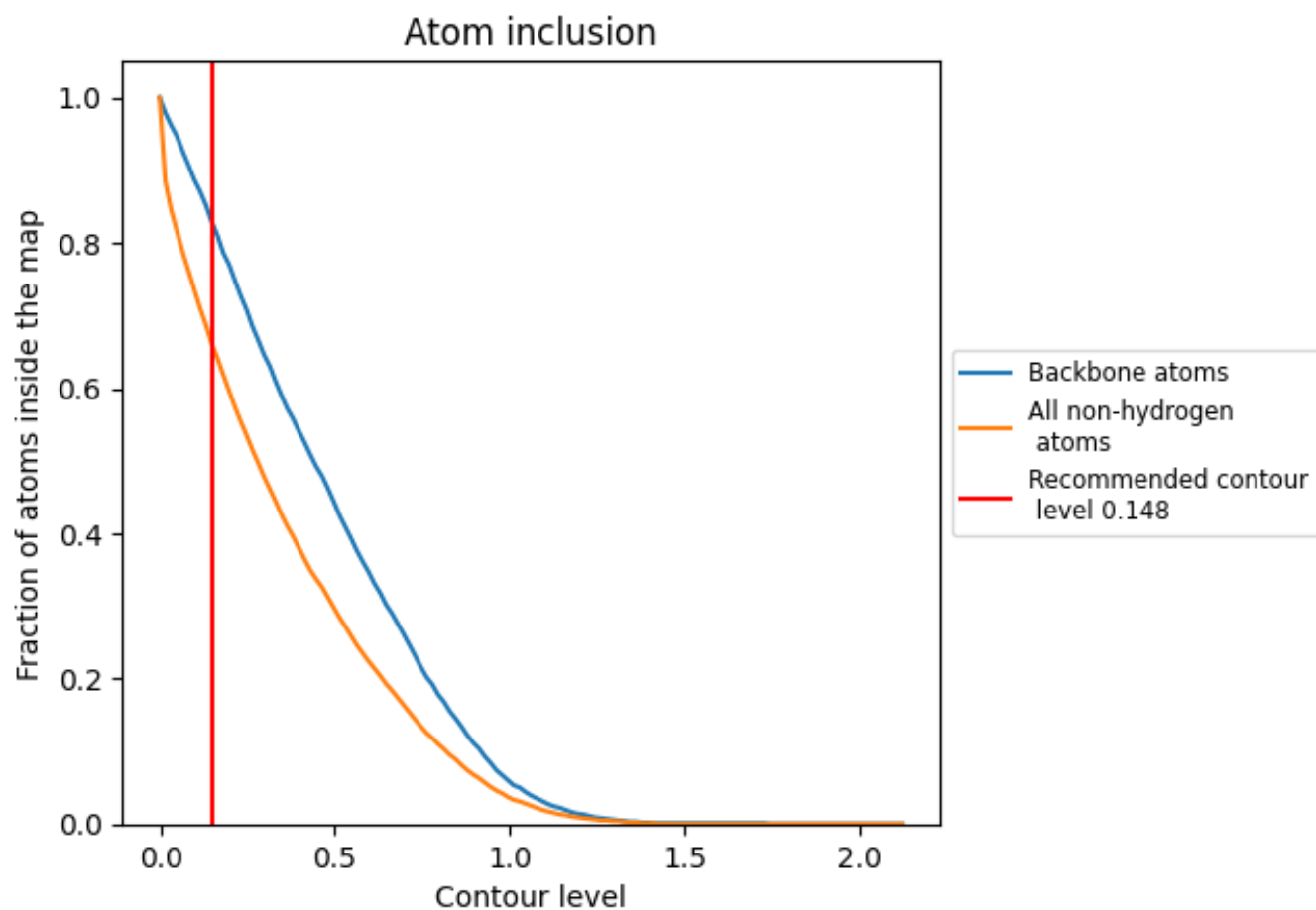
The images above show the model with each residue coloured according to its Q-score. This shows their resolvability in the map with higher Q-score values reflecting better resolvability. Please note: Q-score is calculating the resolvability of atoms, and thus high values are only expected at resolutions at which atoms can be resolved. Low Q-score values may therefore be expected for many entries.

## 9.3 Atom inclusion mapped to coordinate model [\(i\)](#)



The images above show the model with each residue coloured according to its atom inclusion. This shows to what extent they are inside the map at the recommended contour level (0.148).









## 9.4 Atom inclusion [i](#)



At the recommended contour level, 83% of all backbone atoms, 66% of all non-hydrogen atoms, are inside the map.

## 9.5 Map-model fit summary

The table lists the average atom inclusion at the recommended contour level (0.148) and Q-score for the entire model and for each chain.

Chain	Atom inclusion	Q-score
All	 0.6610	 0.3630
A	 0.6880	 0.3780
B	 0.6350	 0.3560
C	 0.5180	 0.2740

