



Full wwPDB X-ray Structure Validation Report ⓘ

Oct 6, 2024 – 05:59 PM JST

PDB ID : 5WY8
Title : Crystal structure of PTP delta Ig1-Ig3 in complex with IL1RAPL1 Ig1-Ig3
Authors : Kim, H.M.; Won, S.Y.; Kim, D.
Deposited on : 2017-01-11
Resolution : 3.07 Å(reported)

This is a Full wwPDB X-ray Structure Validation Report for a publicly released PDB entry.

We welcome your comments at validation@mail.wwpdb.org

A user guide is available at

<https://www.wwpdb.org/validation/2017/XrayValidationReportHelp>

with specific help available everywhere you see the ⓘ symbol.

The types of validation reports are described at

<http://www.wwpdb.org/validation/2017/FAQs#types>.

The following versions of software and data (see [references ⓘ](#)) were used in the production of this report:

MolProbity : 4.02b-467
Mogul : 1.8.5 (274361), CSD as541be (2020)
Xtriage (Phenix) : 1.13
EDS : 3.0
Percentile statistics : 20231227.v01 (using entries in the PDB archive December 27th 2023)
CCP4 : 9.0.003 (Gargrove)
Density-Fitness : 1.0.11
Ideal geometry (proteins) : Engh & Huber (2001)
Ideal geometry (DNA, RNA) : Parkinson et al. (1996)
Validation Pipeline (wwPDB-VP) : 2.39

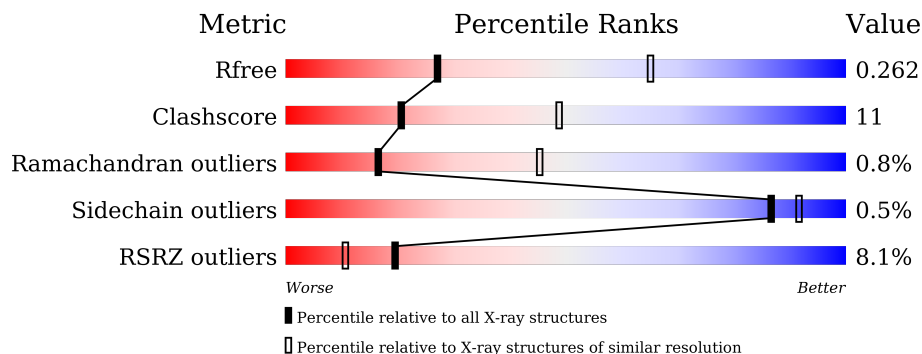
1 Overall quality at a glance

The following experimental techniques were used to determine the structure:

X-RAY DIFFRACTION

The reported resolution of this entry is 3.07 Å.

Percentile scores (ranging between 0-100) for global validation metrics of the entry are shown in the following graphic. The table shows the number of entries on which the scores are based.



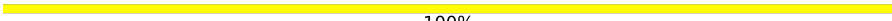
Metric	Whole archive (#Entries)	Similar resolution (#Entries, resolution range(Å))
R_{free}	164625	1842 (3.10-3.06)
Clashscore	180529	1965 (3.10-3.06)
Ramachandran outliers	177936	1859 (3.10-3.06)
Sidechain outliers	177891	1858 (3.10-3.06)
RSRZ outliers	164620	1842 (3.10-3.06)

The table below summarises the geometric issues observed across the polymeric chains and their fit to the electron density. The red, orange, yellow and green segments of the lower bar indicate the fraction of residues that contain outliers for ≥ 3 , 2, 1 and 0 types of geometric quality criteria respectively. A grey segment represents the fraction of residues that are not modelled. The numeric value for each fraction is indicated below the corresponding segment, with a dot representing fractions $\leq 5\%$. The upper red bar (where present) indicates the fraction of residues that have poor fit to the electron density. The numeric value is given above the bar.

Mol	Chain	Length	Quality of chain
1	A	298	
2	B	323	
3	C	2	
4	D	2	
4	E	2	
4	G	2	

Continued on next page...

Continued from previous page...

Mol	Chain	Length	Quality of chain
5	F	4	 100%

2 Entry composition [i](#)

There are 8 unique types of molecules in this entry. The entry contains 5081 atoms, of which 0 are hydrogens and 0 are deuteriums.

In the tables below, the ZeroOcc column contains the number of atoms modelled with zero occupancy, the AltConf column contains the number of residues with at least one atom in alternate conformation and the Trace column contains the number of residues modelled with at most 2 atoms.

- Molecule 1 is a protein called Receptor-type tyrosine-protein phosphatase delta.

Mol	Chain	Residues	Atoms					ZeroOcc	AltConf	Trace
			Total	C	N	O	S			
1	A	298	2291	1422	409	447	13	0	0	0

- Molecule 2 is a protein called Interleukin-1 receptor accessory protein-like 1.

Mol	Chain	Residues	Atoms					ZeroOcc	AltConf	Trace
			Total	C	N	O	S			
2	B	323	2595	1648	428	503	16	0	0	0

- Molecule 3 is an oligosaccharide called alpha-L-fucopyranose-(1-3)-2-acetamido-2-deoxy-beta-D-glucopyranose.



Mol	Chain	Residues	Atoms				ZeroOcc	AltConf	Trace
			Total	C	N	O			
3	C	2	24	14	1	9	0	0	0

- Molecule 4 is an oligosaccharide called 2-acetamido-2-deoxy-beta-D-glucopyranose-(1-4)-2-acetamido-2-deoxy-beta-D-glucopyranose.



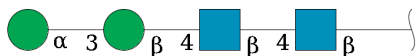
Mol	Chain	Residues	Atoms				ZeroOcc	AltConf	Trace
			Total	C	N	O			
4	D	2	28	16	2	10	0	0	0
4	E	2	28	16	2	10	0	0	0

Continued on next page...

Continued from previous page...

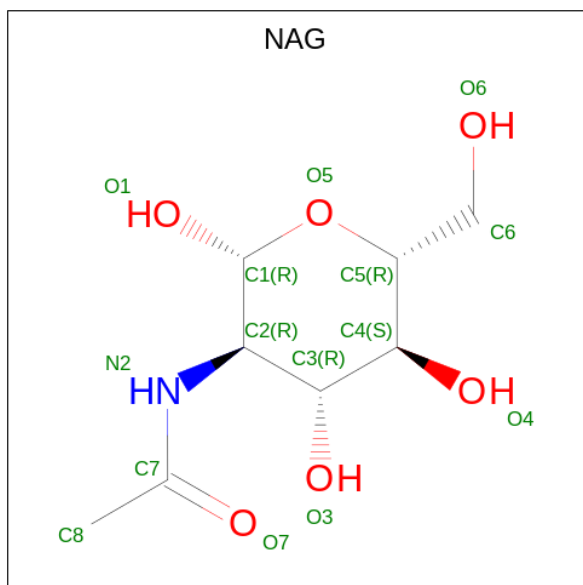
Mol	Chain	Residues	Atoms				ZeroOcc	AltConf	Trace
			Total	C	N	O			
4	G	2	28	16	2	10	0	0	0

- Molecule 5 is an oligosaccharide called alpha-D-mannopyranose-(1-3)-beta-D-mannopyranose-(1-4)-2-acetamido-2-deoxy-beta-D-glucopyranose-(1-4)-2-acetamido-2-deoxy-beta-D-glucopyranose.



Mol	Chain	Residues	Atoms				ZeroOcc	AltConf	Trace
			Total	C	N	O			
5	F	4	50	28	2	20	0	0	0

- Molecule 6 is 2-acetamido-2-deoxy-beta-D-glucopyranose (three-letter code: NAG) (formula: $C_8H_{15}NO_6$).



Mol	Chain	Residues	Atoms				ZeroOcc	AltConf
			Total	C	N	O		
6	A	1	14	8	1	5	0	0
6	B	1	14	8	1	5	0	0

- Molecule 7 is ZINC ION (three-letter code: ZN) (formula: Zn).

Mol	Chain	Residues	Atoms		ZeroOcc	AltConf
7	B	3	Total 3	Zn 3	0	0

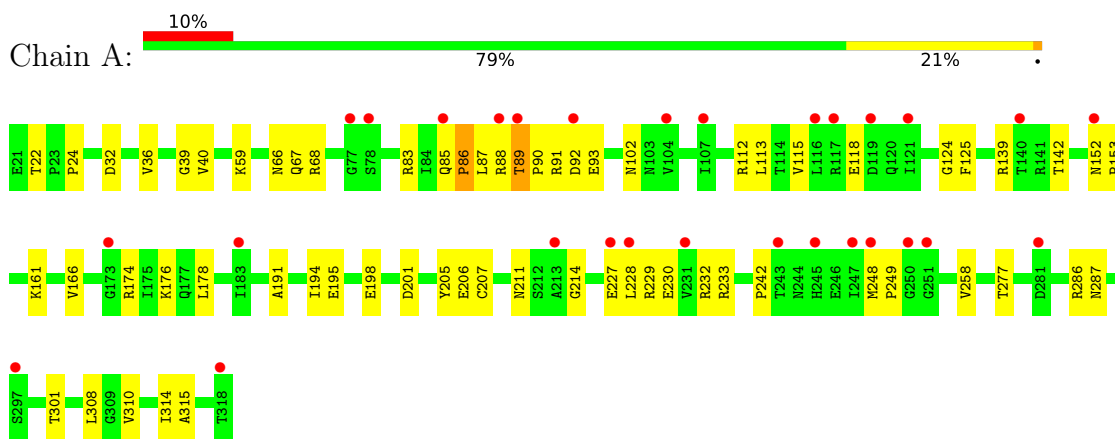
- Molecule 8 is water.

Mol	Chain	Residues	Atoms		ZeroOcc	AltConf
8	A	2	Total 2	O 2	0	0
8	B	4	Total 4	O 4	0	0

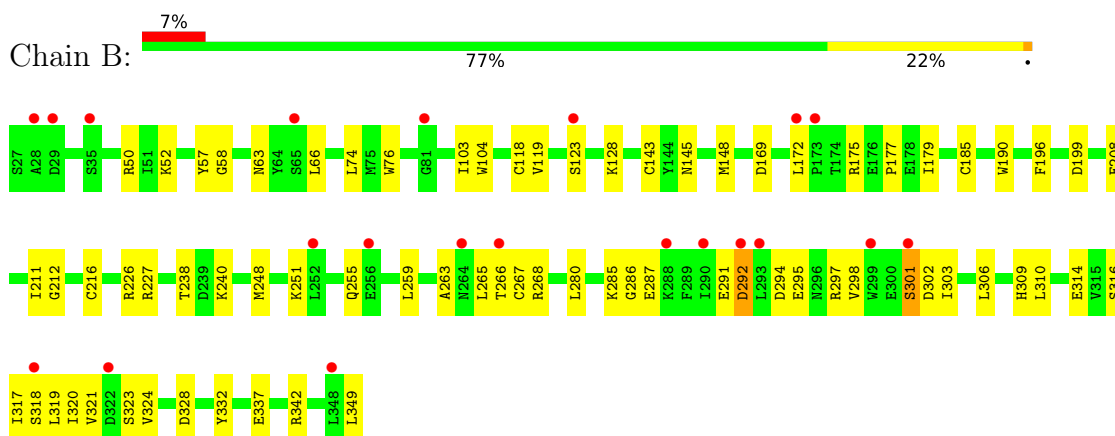
3 Residue-property plots [i](#)

These plots are drawn for all protein, RNA, DNA and oligosaccharide chains in the entry. The first graphic for a chain summarises the proportions of the various outlier classes displayed in the second graphic. The second graphic shows the sequence view annotated by issues in geometry and electron density. Residues are color-coded according to the number of geometric quality criteria for which they contain at least one outlier: green = 0, yellow = 1, orange = 2 and red = 3 or more. A red dot above a residue indicates a poor fit to the electron density ($RSRZ > 2$). Stretches of 2 or more consecutive residues without any outlier are shown as a green connector. Residues present in the sample, but not in the model, are shown in grey.

- Molecule 1: Receptor-type tyrosine-protein phosphatase delta



- Molecule 2: Interleukin-1 receptor accessory protein-like 1



- Molecule 3: alpha-L-fucopyranose-(1-3)-2-acetamido-2-deoxy-beta-D-glucopyranose



- Molecule 4: 2-acetamido-2-deoxy-beta-D-glucopyranose-(1-4)-2-acetamido-2-deoxy-beta-D-glucopyranose

Chain D:  50% 50%

MAG1
MAG2

- Molecule 4: 2-acetamido-2-deoxy-beta-D-glucopyranose-(1-4)-2-acetamido-2-deoxy-beta-D-glucopyranose

Chain E:  50% 50%

MAG1
MAG2

- Molecule 4: 2-acetamido-2-deoxy-beta-D-glucopyranose-(1-4)-2-acetamido-2-deoxy-beta-D-glucopyranose

Chain G:  100%

MAG1
MAG2

- Molecule 5: alpha-D-mannopyranose-(1-3)-beta-D-mannopyranose-(1-4)-2-acetamido-2-deoxy-beta-D-glucopyranose-(1-4)-2-acetamido-2-deoxy-beta-D-glucopyranose

Chain F:  100%

MAG1
MAG2
BMA3
MAN4

4 Data and refinement statistics i

Property	Value	Source
Space group	P 32 1 2	Depositor
Cell constants a, b, c, α , β , γ	110.42Å 110.42Å 210.54Å 90.00° 90.00° 120.00°	Depositor
Resolution (Å)	48.89 – 3.07 48.89 – 3.07	Depositor EDS
% Data completeness (in resolution range)	99.3 (48.89-3.07) 99.3 (48.89-3.07)	Depositor EDS
R_{merge}	0.09	Depositor
R_{sym}	(Not available)	Depositor
$\langle I/\sigma(I) \rangle$ ¹	2.83 (at 3.07Å)	Xtrriage
Refinement program	PHENIX 1.10.1_2155	Depositor
R, R_{free}	0.233 , 0.255 0.242 , 0.262	Depositor DCC
R_{free} test set	25768 reflections (7.22%)	wwPDB-VP
Wilson B-factor (Å ²)	88.1	Xtrriage
Anisotropy	0.286	Xtrriage
Bulk solvent k_{sol} (e/Å ³), B_{sol} (Å ²)	0.34 , 62.8	EDS
L-test for twinning ²	$\langle L \rangle = 0.50$, $\langle L^2 \rangle = 0.33$	Xtrriage
Estimated twinning fraction	0.035 for -h,-k,l	Xtrriage
F_o, F_c correlation	0.91	EDS
Total number of atoms	5081	wwPDB-VP
Average B, all atoms (Å ²)	91.0	wwPDB-VP

Xtrriage's analysis on translational NCS is as follows: *The largest off-origin peak in the Patterson function is 2.77% of the height of the origin peak. No significant pseudotranslation is detected.*

¹Intensities estimated from amplitudes.

²Theoretical values of $\langle |L| \rangle$, $\langle L^2 \rangle$ for acentric reflections are 0.5, 0.333 respectively for untwinned datasets, and 0.375, 0.2 for perfectly twinned datasets.

5 Model quality [i](#)

5.1 Standard geometry [i](#)

Bond lengths and bond angles in the following residue types are not validated in this section: NAG, FUC, BMA, MAN, ZN

The Z score for a bond length (or angle) is the number of standard deviations the observed value is removed from the expected value. A bond length (or angle) with $|Z| > 5$ is considered an outlier worth inspection. RMSZ is the root-mean-square of all Z scores of the bond lengths (or angles).

Mol	Chain	Bond lengths		Bond angles	
		RMSZ	# $ Z > 5$	RMSZ	# $ Z > 5$
1	A	0.33	0/2335	0.58	0/3176
2	B	0.38	1/2650 (0.0%)	0.58	1/3582 (0.0%)
All	All	0.36	1/4985 (0.0%)	0.58	1/6758 (0.0%)

All (1) bond length outliers are listed below:

Mol	Chain	Res	Type	Atoms	Z	Observed(Å)	Ideal(Å)
2	B	301	SER	CB-OG	-5.32	1.35	1.42

All (1) bond angle outliers are listed below:

Mol	Chain	Res	Type	Atoms	Z	Observed(°)	Ideal(°)
2	B	319	LEU	CB-CG-CD2	-5.45	101.73	111.00

There are no chirality outliers.

There are no planarity outliers.

5.2 Too-close contacts [i](#)

In the following table, the Non-H and H(model) columns list the number of non-hydrogen atoms and hydrogen atoms in the chain respectively. The H(added) column lists the number of hydrogen atoms added and optimized by MolProbity. The Clashes column lists the number of clashes within the asymmetric unit, whereas Symm-Clashes lists symmetry-related clashes.

Mol	Chain	Non-H	H(model)	H(added)	Clashes	Symm-Clashes
1	A	2291	0	2271	56	0
2	B	2595	0	2538	56	0
3	C	24	0	22	0	0
4	D	28	0	25	3	0

Continued on next page...

Continued from previous page...

Mol	Chain	Non-H	H(model)	H(added)	Clashes	Symm-Clashes
4	E	28	0	25	0	0
4	G	28	0	25	1	0
5	F	50	0	43	0	0
6	A	14	0	13	0	0
6	B	14	0	13	1	0
7	B	3	0	0	0	0
8	A	2	0	0	0	0
8	B	4	0	0	0	0
All	All	5081	0	4975	110	0

The all-atom clashscore is defined as the number of clashes found per 1000 atoms (including hydrogen atoms). The all-atom clashscore for this structure is 11.

All (110) close contacts within the same asymmetric unit are listed below, sorted by their clash magnitude.

Atom-1	Atom-2	Interatomic distance (Å)	Clash overlap (Å)
1:A:89:THR:HG22	1:A:115:VAL:HG12	1.46	0.97
1:A:174:ARG:HH12	1:A:198:GLU:H	1.19	0.89
1:A:68:ARG:NH2	1:A:92:ASP:OD2	2.10	0.83
1:A:89:THR:HA	1:A:115:VAL:HB	1.61	0.83
1:A:228:LEU:HD12	1:A:228:LEU:H	1.42	0.83
1:A:139:ARG:HH21	1:A:228:LEU:HD11	1.44	0.82
2:B:306:LEU:HD11	4:D:2:NAG:H83	1.61	0.81
2:B:298:VAL:HG12	2:B:321:VAL:HG12	1.64	0.78
2:B:301:SER:OG	2:B:318:SER:HB2	1.82	0.78
2:B:268:ARG:NH2	2:B:314:GLU:OE2	2.17	0.76
1:A:153:PRO:HD2	1:A:211:ASN:HD21	1.51	0.76
1:A:242:PRO:HB2	1:A:315:ALA:HB2	1.68	0.75
2:B:238:THR:HG22	2:B:240:LYS:H	1.52	0.75
1:A:89:THR:HG22	1:A:115:VAL:CG1	2.18	0.73
2:B:301:SER:CB	2:B:318:SER:H	2.03	0.72
1:A:174:ARG:NH1	1:A:198:GLU:H	1.87	0.72
1:A:89:THR:O	1:A:93:GLU:HB2	1.93	0.68
2:B:63:ASN:HB2	2:B:66:LEU:HB2	1.75	0.67
1:A:24:PRO:HG3	1:A:102:ASN:HB2	1.74	0.67
1:A:248:MET:HB3	1:A:249:PRO:HD2	1.75	0.67
2:B:265:LEU:O	2:B:318:SER:HA	1.93	0.67
2:B:306:LEU:HD11	4:D:2:NAG:C8	2.25	0.67
1:A:86:PRO:HB3	1:A:88:ARG:HH22	1.59	0.66
2:B:294:ASP:HA	2:B:298:VAL:HG22	1.77	0.65
2:B:301:SER:HB2	2:B:318:SER:H	1.61	0.64

Continued on next page...

Continued from previous page...

Atom-1	Atom-2	Interatomic distance (Å)	Clash overlap (Å)
1:A:89:THR:OG1	1:A:90:PRO:CD	2.47	0.62
1:A:233:ARG:HB2	1:A:308:LEU:HD11	1.81	0.62
1:A:22:THR:O	1:A:102:ASN:ND2	2.33	0.62
1:A:32:ASP:OD1	1:A:112:ARG:N	2.31	0.62
1:A:277:THR:HG21	1:A:287:ASN:HD21	1.63	0.62
2:B:297:ARG:NH2	2:B:323:SER:O	2.34	0.61
2:B:177:PRO:HB2	2:B:179:ILE:HG13	1.84	0.60
2:B:212:GLY:HA2	4:G:1:NAG:H82	1.83	0.60
1:A:230:GLU:OE1	1:A:230:GLU:N	2.34	0.60
1:A:142:THR:HA	1:A:194:ILE:O	2.02	0.59
2:B:172:LEU:HB2	2:B:175:ARG:HB2	1.83	0.59
1:A:89:THR:OG1	1:A:90:PRO:HD2	2.03	0.58
1:A:139:ARG:NH2	1:A:228:LEU:HD11	2.15	0.58
2:B:297:ARG:NH1	2:B:328:ASP:OD1	2.36	0.58
1:A:229:ARG:HG2	1:A:230:GLU:OE1	2.04	0.57
2:B:172:LEU:HD13	2:B:175:ARG:HD2	1.85	0.57
1:A:87:LEU:HB3	1:A:115:VAL:HG11	1.87	0.57
2:B:50:ARG:NH1	2:B:169:ASP:OD1	2.37	0.57
1:A:85:GLN:HB3	1:A:86:PRO:HD3	1.86	0.57
2:B:255:GLN:O	2:B:349:LEU:HA	2.04	0.56
2:B:267:CYS:O	2:B:316:SER:HA	2.06	0.56
2:B:301:SER:OG	2:B:318:SER:O	2.24	0.56
2:B:143:CYS:N	2:B:185:CYS:SG	2.75	0.55
1:A:87:LEU:HD12	1:A:87:LEU:N	2.22	0.55
1:A:178:LEU:HB2	1:A:191:ALA:HB3	1.89	0.55
1:A:229:ARG:NH2	1:A:232:ARG:HG3	2.21	0.55
2:B:303:ILE:HG12	2:B:317:ILE:HD12	1.90	0.54
2:B:285:LYS:O	2:B:287:GLU:N	2.40	0.54
1:A:86:PRO:CB	1:A:88:ARG:HH22	2.21	0.54
2:B:294:ASP:OD1	2:B:295:GLU:N	2.41	0.54
1:A:83:ARG:NH2	1:A:206:GLU:OE2	2.32	0.54
2:B:285:LYS:HG3	2:B:332:TYR:CE2	2.43	0.53
2:B:119:VAL:HG22	2:B:128:LYS:HB2	1.88	0.53
1:A:152:ASN:HB3	1:A:153:PRO:HD3	1.89	0.52
2:B:309:HIS:CD2	2:B:310:LEU:HD13	2.44	0.52
2:B:265:LEU:O	2:B:318:SER:CA	2.58	0.52
1:A:229:ARG:HH12	1:A:230:GLU:HB2	1.74	0.51
2:B:179:ILE:HD12	2:B:199:ASP:HA	1.92	0.51
1:A:174:ARG:NH2	1:A:201:ASP:OD1	2.44	0.51
1:A:229:ARG:HH22	1:A:232:ARG:HG3	1.75	0.51
2:B:226:ARG:O	2:B:227:ARG:NE	2.42	0.51

Continued on next page...

Continued from previous page...

Atom-1	Atom-2	Interatomic distance (Å)	Clash overlap (Å)
2:B:66:LEU:HD11	6:B:403:NAG:H83	1.94	0.50
1:A:227:GLU:N	1:A:227:GLU:OE1	2.45	0.49
2:B:263:ALA:HB3	2:B:321:VAL:CG2	2.43	0.49
2:B:337:GLU:HG3	2:B:342:ARG:HB3	1.95	0.48
1:A:310:VAL:HG11	2:B:123:SER:HA	1.96	0.47
2:B:301:SER:OG	2:B:318:SER:CB	2.58	0.47
1:A:36:VAL:HG12	1:A:118:GLU:HG3	1.97	0.47
1:A:176:LYS:NZ	1:A:195:GLU:OE2	2.27	0.47
2:B:301:SER:O	2:B:302:ASP:HB3	2.15	0.47
1:A:161:LYS:HB3	1:A:166:VAL:HG22	1.96	0.47
2:B:74:LEU:HD11	2:B:118:CYS:SG	2.56	0.46
2:B:306:LEU:CD1	4:D:2:NAG:H83	2.41	0.46
2:B:292:ASP:N	2:B:292:ASP:OD1	2.49	0.46
1:A:40:VAL:HG12	1:A:85:GLN:O	2.17	0.45
2:B:172:LEU:HD22	2:B:175:ARG:HH11	1.82	0.45
1:A:228:LEU:HD12	1:A:228:LEU:N	2.21	0.44
1:A:66:ASN:OD1	1:A:67:GLN:N	2.51	0.44
1:A:91:ARG:HD3	2:B:291:GLU:OE1	2.18	0.44
1:A:125:PHE:CE1	1:A:214:GLY:HA3	2.52	0.44
1:A:229:ARG:HG2	1:A:229:ARG:HH11	1.81	0.44
2:B:301:SER:OG	2:B:318:SER:N	2.49	0.43
1:A:258:VAL:HG22	1:A:286:ARG:HB2	2.00	0.43
1:A:40:VAL:HA	1:A:87:LEU:HD11	1.99	0.43
2:B:52:LYS:HD2	2:B:57:TYR:CZ	2.53	0.43
2:B:259:LEU:HA	2:B:324:VAL:HB	2.01	0.43
2:B:190:TRP:CG	2:B:196:PHE:HE2	2.37	0.43
1:A:228:LEU:H	1:A:228:LEU:CD1	2.23	0.42
2:B:280:LEU:HD12	2:B:280:LEU:HA	1.86	0.42
2:B:301:SER:O	2:B:302:ASP:CB	2.67	0.42
2:B:145:ASN:HB3	2:B:148:MET:HE2	2.02	0.42
1:A:161:LYS:HD3	1:A:205:TYR:CZ	2.54	0.42
2:B:50:ARG:HD2	2:B:104:TRP:NE1	2.35	0.41
1:A:92:ASP:O	1:A:113:LEU:HD12	2.20	0.41
1:A:301:THR:HG22	1:A:314:ILE:HG23	2.02	0.41
2:B:248:MET:HB3	2:B:251:LYS:HE3	2.02	0.41
1:A:24:PRO:CG	1:A:102:ASN:HB2	2.46	0.41
2:B:76:TRP:CD2	2:B:103:ILE:HD11	2.56	0.41
2:B:266:THR:HG22	2:B:318:SER:OG	2.20	0.41
1:A:59:LYS:HE3	1:A:92:ASP:HA	2.03	0.41
1:A:124:GLY:HA3	1:A:152:ASN:CB	2.51	0.41
1:A:174:ARG:HD2	1:A:195:GLU:O	2.21	0.41

Continued on next page...

Continued from previous page...

Atom-1	Atom-2	Interatomic distance (Å)	Clash overlap (Å)
2:B:301:SER:OG	2:B:318:SER:CA	2.69	0.41
2:B:208:GLU:O	2:B:211:ILE:HG13	2.21	0.40
2:B:298:VAL:HA	2:B:320:ILE:O	2.21	0.40

There are no symmetry-related clashes.

5.3 Torsion angles [i](#)

5.3.1 Protein backbone [i](#)

In the following table, the Percentiles column shows the percent Ramachandran outliers of the chain as a percentile score with respect to all X-ray entries followed by that with respect to entries of similar resolution.

The Analysed column shows the number of residues for which the backbone conformation was analysed, and the total number of residues.

Mol	Chain	Analysed	Favoured	Allowed	Outliers	Percentiles	
1	A	296/298 (99%)	287 (97%)	6 (2%)	3 (1%)	13	40
2	B	321/323 (99%)	304 (95%)	15 (5%)	2 (1%)	22	51
All	All	617/621 (99%)	591 (96%)	21 (3%)	5 (1%)	16	45

All (5) Ramachandran outliers are listed below:

Mol	Chain	Res	Type
1	A	89	THR
2	B	286	GLY
2	B	58	GLY
1	A	86	PRO
1	A	39	GLY

5.3.2 Protein sidechains [i](#)

In the following table, the Percentiles column shows the percent sidechain outliers of the chain as a percentile score with respect to all X-ray entries followed by that with respect to entries of similar resolution.

The Analysed column shows the number of residues for which the sidechain conformation was analysed, and the total number of residues.

Mol	Chain	Analysed	Rotameric	Outliers	Percentiles	
1	A	257/257 (100%)	256 (100%)	1 (0%)	89	93
2	B	290/290 (100%)	288 (99%)	2 (1%)	81	89
All	All	547/547 (100%)	544 (100%)	3 (0%)	86	91

All (3) residues with a non-rotameric sidechain are listed below:

Mol	Chain	Res	Type
1	A	207	CYS
2	B	216	CYS
2	B	292	ASP

Sometimes sidechains can be flipped to improve hydrogen bonding and reduce clashes. There are no such sidechains identified.

5.3.3 RNA [i](#)

There are no RNA molecules in this entry.

5.4 Non-standard residues in protein, DNA, RNA chains [i](#)

There are no non-standard protein/DNA/RNA residues in this entry.

5.5 Carbohydrates [i](#)

12 monosaccharides are modelled in this entry.

In the following table, the Counts columns list the number of bonds (or angles) for which Mogul statistics could be retrieved, the number of bonds (or angles) that are observed in the model and the number of bonds (or angles) that are defined in the Chemical Component Dictionary. The Link column lists molecule types, if any, to which the group is linked. The Z score for a bond length (or angle) is the number of standard deviations the observed value is removed from the expected value. A bond length (or angle) with $|Z| > 2$ is considered an outlier worth inspection. RMSZ is the root-mean-square of all Z scores of the bond lengths (or angles).

Mol	Type	Chain	Res	Link	Bond lengths			Bond angles		
					Counts	RMSZ	$\# Z > 2$	Counts	RMSZ	$\# Z > 2$
3	NAG	C	1	3,1	14,14,15	0.45	0	17,19,21	0.61	0
3	FUC	C	2	3	10,10,11	1.20	2 (20%)	14,14,16	1.02	1 (7%)
4	NAG	D	1	4,2	14,14,15	0.28	0	17,19,21	0.60	0
4	NAG	D	2	4	14,14,15	0.28	0	17,19,21	0.70	0
4	NAG	E	1	4,2	14,14,15	0.32	0	17,19,21	0.50	0

Mol	Type	Chain	Res	Link	Bond lengths			Bond angles		
					Counts	RMSZ	# Z > 2	Counts	RMSZ	# Z > 2
4	NAG	E	2	4	14,14,15	0.57	0	17,19,21	1.08	2 (11%)
5	NAG	F	1	5,2	14,14,15	1.06	1 (7%)	17,19,21	1.11	2 (11%)
5	NAG	F	2	5	14,14,15	0.93	1 (7%)	17,19,21	1.33	1 (5%)
5	BMA	F	3	5	11,11,12	1.10	1 (9%)	15,15,17	1.12	2 (13%)
5	MAN	F	4	5	11,11,12	0.70	0	15,15,17	1.18	2 (13%)
4	NAG	G	1	4,2	14,14,15	0.16	0	17,19,21	0.59	0
4	NAG	G	2	4	14,14,15	0.54	0	17,19,21	1.06	2 (11%)

In the following table, the Chirals column lists the number of chiral outliers, the number of chiral centers analysed, the number of these observed in the model and the number defined in the Chemical Component Dictionary. Similar counts are reported in the Torsion and Rings columns. '-' means no outliers of that kind were identified.

Mol	Type	Chain	Res	Link	Chirals	Torsions	Rings
3	NAG	C	1	3,1	-	2/6/23/26	0/1/1/1
3	FUC	C	2	3	-	-	0/1/1/1
4	NAG	D	1	4,2	-	2/6/23/26	0/1/1/1
4	NAG	D	2	4	-	0/6/23/26	0/1/1/1
4	NAG	E	1	4,2	-	0/6/23/26	0/1/1/1
4	NAG	E	2	4	-	2/6/23/26	0/1/1/1
5	NAG	F	1	5,2	-	2/6/23/26	0/1/1/1
5	NAG	F	2	5	-	2/6/23/26	0/1/1/1
5	BMA	F	3	5	-	0/2/19/22	0/1/1/1
5	MAN	F	4	5	-	2/2/19/22	0/1/1/1
4	NAG	G	1	4,2	-	0/6/23/26	0/1/1/1
4	NAG	G	2	4	-	2/6/23/26	0/1/1/1

All (5) bond length outliers are listed below:

Mol	Chain	Res	Type	Atoms	Z	Observed(Å)	Ideal(Å)
5	F	1	NAG	O5-C1	-3.55	1.38	1.43
5	F	2	NAG	O5-C1	3.20	1.48	1.43
3	C	2	FUC	C1-C2	2.13	1.57	1.52
5	F	3	BMA	C2-C3	2.08	1.55	1.52
3	C	2	FUC	C2-C3	2.03	1.55	1.52

All (12) bond angle outliers are listed below:

Mol	Chain	Res	Type	Atoms	Z	Observed(°)	Ideal(°)
5	F	2	NAG	C1-O5-C5	4.97	118.93	112.19
4	G	2	NAG	C1-O5-C5	3.30	116.67	112.19
5	F	4	MAN	C1-O5-C5	3.29	116.65	112.19
4	E	2	NAG	C1-O5-C5	3.24	116.58	112.19
5	F	3	BMA	C1-C2-C3	2.71	113.00	109.67
5	F	1	NAG	C3-C4-C5	2.51	114.72	110.24
5	F	1	NAG	O4-C4-C3	-2.45	104.68	110.35
4	E	2	NAG	C3-C4-C5	2.39	114.51	110.24
5	F	4	MAN	O2-C2-C3	-2.16	105.81	110.14
4	G	2	NAG	C3-C4-C5	2.13	114.04	110.24
3	C	2	FUC	O2-C2-C1	2.05	113.34	109.15
5	F	3	BMA	C2-C3-C4	2.03	114.40	110.89

There are no chirality outliers.

All (14) torsion outliers are listed below:

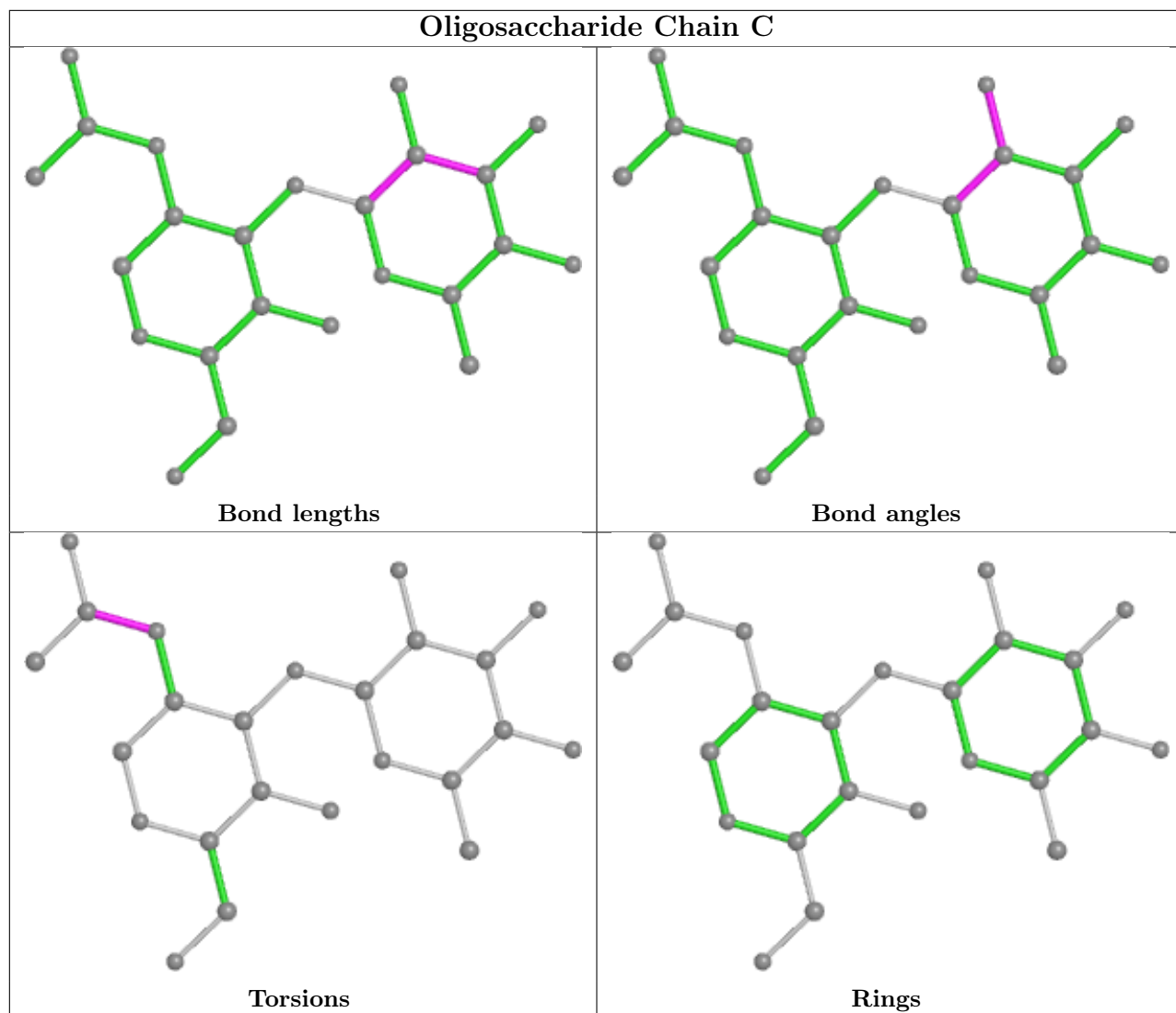
Mol	Chain	Res	Type	Atoms
4	G	2	NAG	O5-C5-C6-O6
4	D	1	NAG	C8-C7-N2-C2
4	D	1	NAG	O7-C7-N2-C2
4	E	2	NAG	O5-C5-C6-O6
4	G	2	NAG	C4-C5-C6-O6
5	F	1	NAG	O5-C5-C6-O6
4	E	2	NAG	C4-C5-C6-O6
5	F	2	NAG	O5-C5-C6-O6
5	F	4	MAN	O5-C5-C6-O6
5	F	1	NAG	C4-C5-C6-O6
3	C	1	NAG	C8-C7-N2-C2
3	C	1	NAG	O7-C7-N2-C2
5	F	2	NAG	C4-C5-C6-O6
5	F	4	MAN	C4-C5-C6-O6

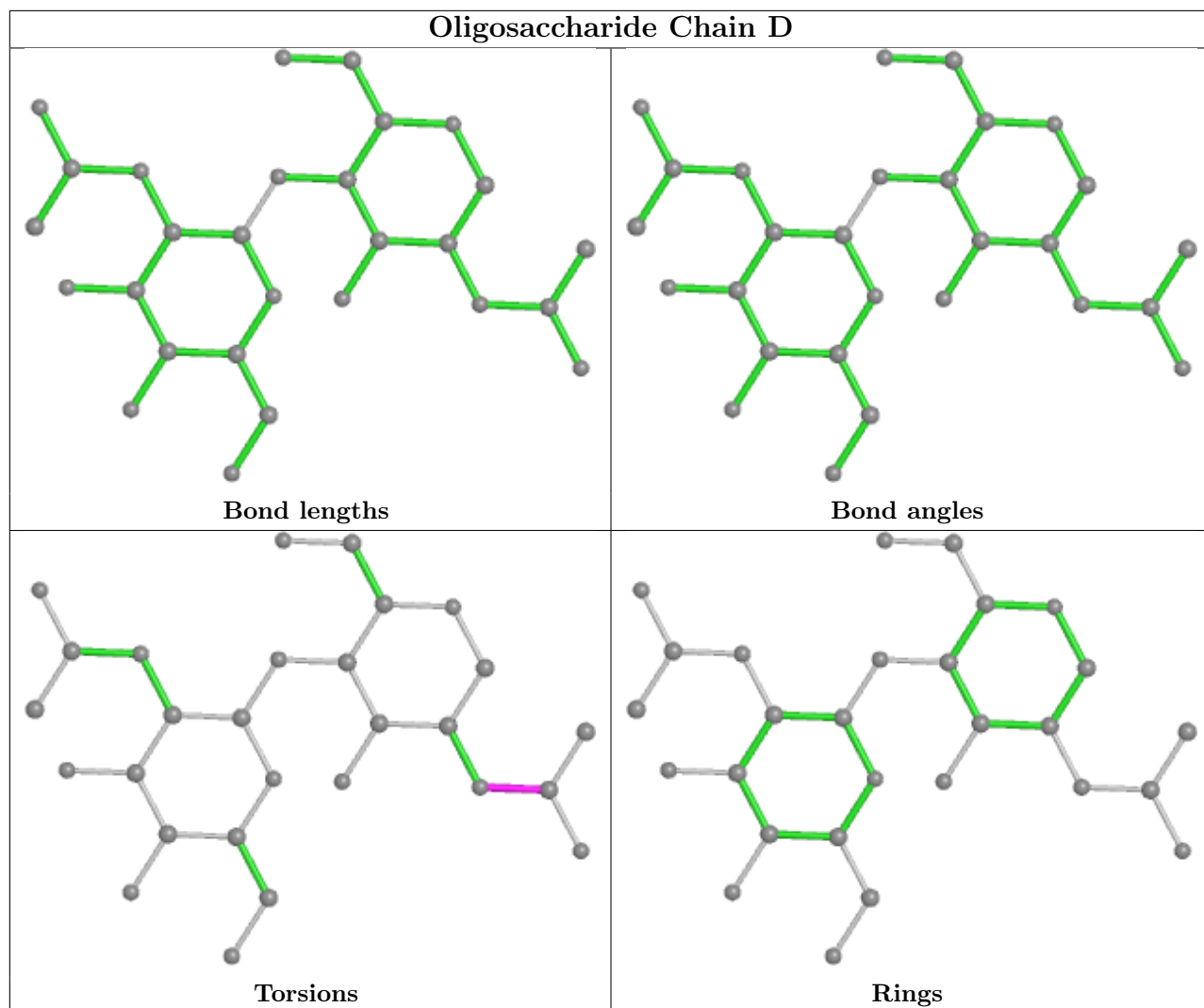
There are no ring outliers.

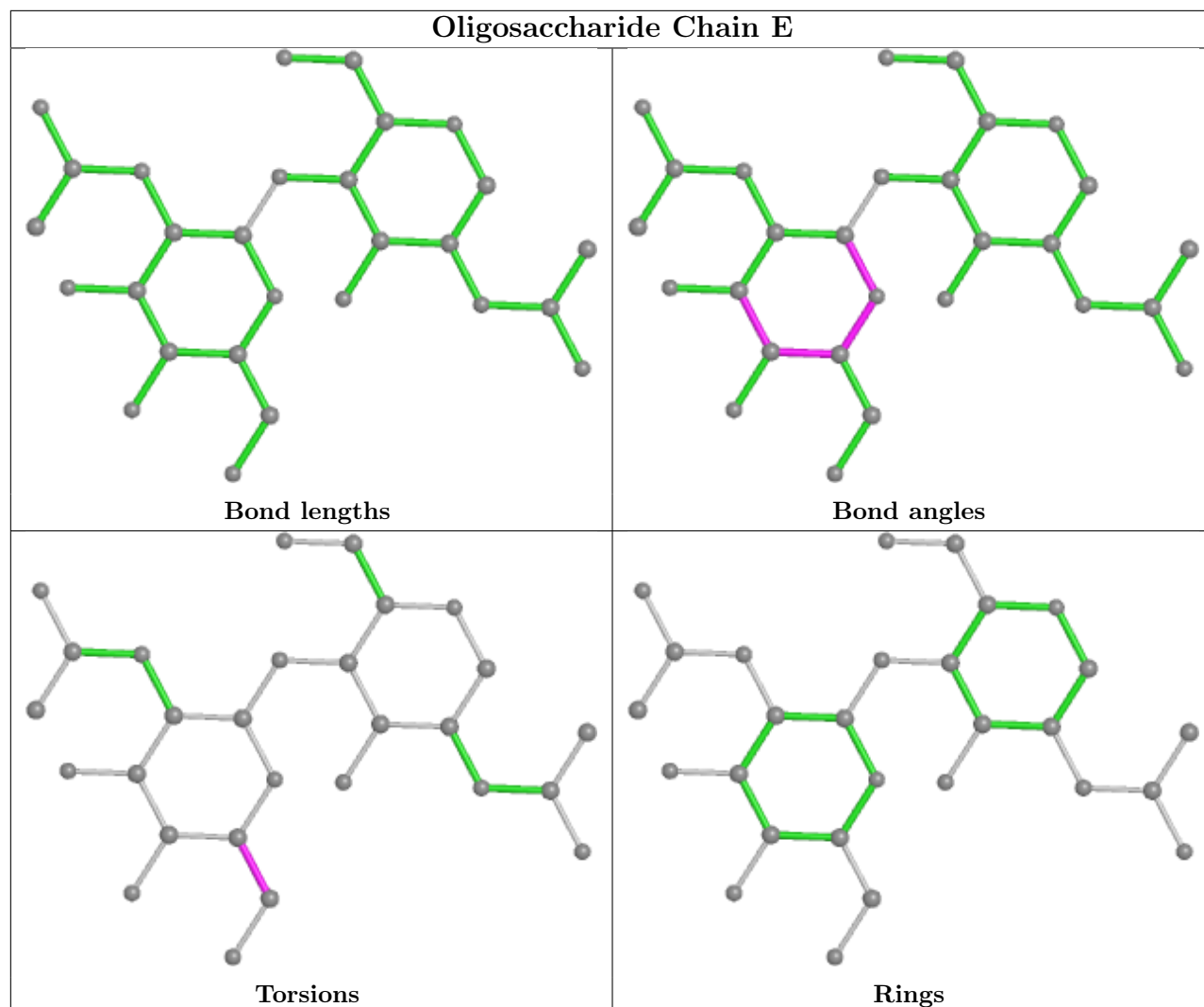
2 monomers are involved in 4 short contacts:

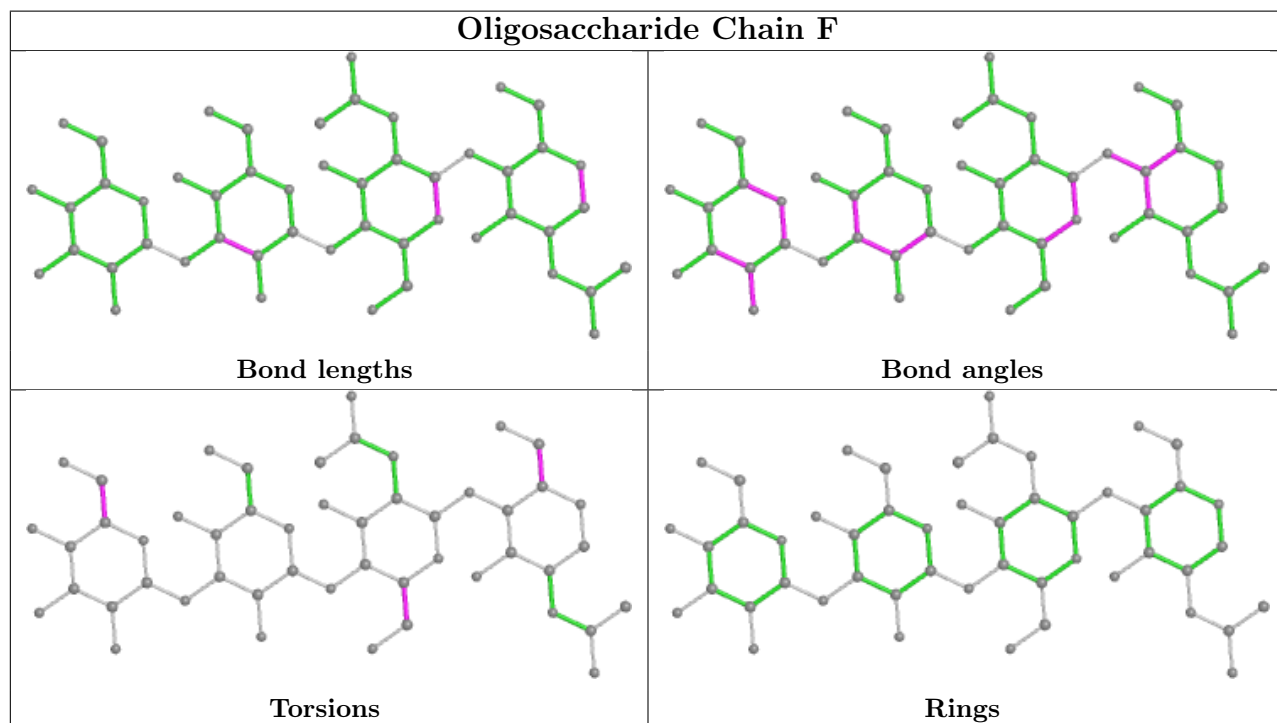
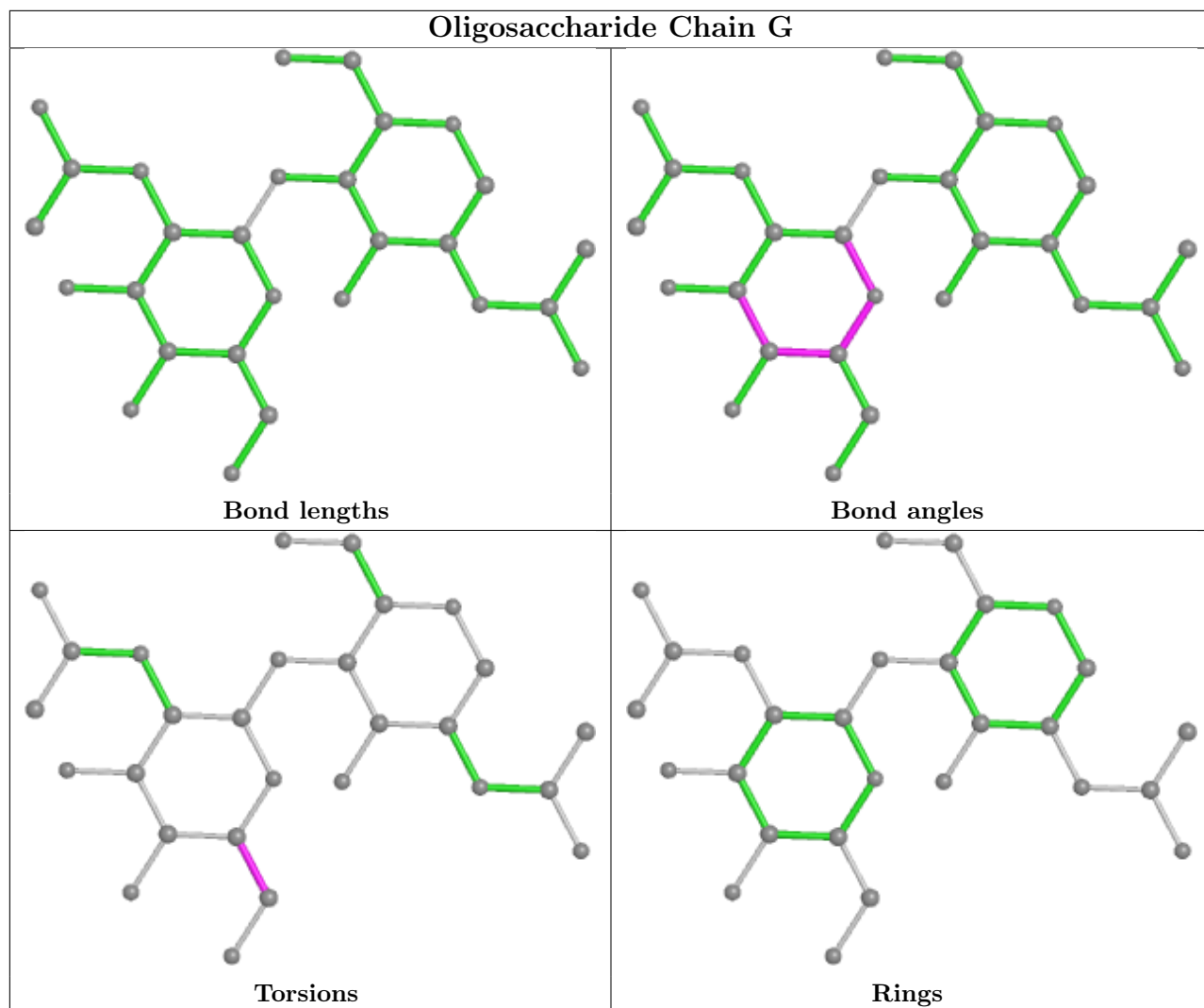
Mol	Chain	Res	Type	Clashes	Symm-Clashes
4	D	2	NAG	3	0
4	G	1	NAG	1	0

The following is a two-dimensional graphical depiction of Mogul quality analysis of bond lengths, bond angles, torsion angles, and ring geometry for oligosaccharide.









5.6 Ligand geometry

Of 5 ligands modelled in this entry, 3 are monoatomic - leaving 2 for Mogul analysis.

In the following table, the Counts columns list the number of bonds (or angles) for which Mogul statistics could be retrieved, the number of bonds (or angles) that are observed in the model and the number of bonds (or angles) that are defined in the Chemical Component Dictionary. The Link column lists molecule types, if any, to which the group is linked. The Z score for a bond length (or angle) is the number of standard deviations the observed value is removed from the expected value. A bond length (or angle) with $|Z| > 2$ is considered an outlier worth inspection. RMSZ is the root-mean-square of all Z scores of the bond lengths (or angles).

Mol	Type	Chain	Res	Link	Bond lengths			Bond angles		
					Counts	RMSZ	# Z > 2	Counts	RMSZ	# Z > 2
6	NAG	B	403	2	14,14,15	0.74	1 (7%)	17,19,21	0.93	1 (5%)
6	NAG	A	1103	1	14,14,15	0.38	0	17,19,21	0.63	1 (5%)

In the following table, the Chirals column lists the number of chiral outliers, the number of chiral centers analysed, the number of these observed in the model and the number defined in the Chemical Component Dictionary. Similar counts are reported in the Torsion and Rings columns. '-' means no outliers of that kind were identified.

Mol	Type	Chain	Res	Link	Chirals	Torsions	Rings
6	NAG	B	403	2	-	2/6/23/26	0/1/1/1
6	NAG	A	1103	1	-	2/6/23/26	0/1/1/1

All (1) bond length outliers are listed below:

Mol	Chain	Res	Type	Atoms	Z	Observed(Å)	Ideal(Å)
6	B	403	NAG	C1-C2	2.29	1.55	1.52

All (2) bond angle outliers are listed below:

Mol	Chain	Res	Type	Atoms	Z	Observed(°)	Ideal(°)
6	B	403	NAG	C1-O5-C5	3.35	116.73	112.19
6	A	1103	NAG	C1-O5-C5	2.20	115.17	112.19

There are no chirality outliers.

All (4) torsion outliers are listed below:

Mol	Chain	Res	Type	Atoms
6	B	403	NAG	C8-C7-N2-C2
6	B	403	NAG	O7-C7-N2-C2

Continued on next page...

Continued from previous page...

Mol	Chain	Res	Type	Atoms
6	A	1103	NAG	O5-C5-C6-O6
6	A	1103	NAG	C4-C5-C6-O6

There are no ring outliers.

1 monomer is involved in 1 short contact:

Mol	Chain	Res	Type	Clashes	Symm-Clashes
6	B	403	NAG	1	0

5.7 Other polymers [i](#)

There are no such residues in this entry.

5.8 Polymer linkage issues [i](#)

There are no chain breaks in this entry.

6 Fit of model and data

6.1 Protein, DNA and RNA chains

In the following table, the column labelled ‘#RSRZ > 2’ contains the number (and percentage) of RSRZ outliers, followed by percent RSRZ outliers for the chain as percentile scores relative to all X-ray entries and entries of similar resolution. The OWAB column contains the minimum, median, 95th percentile and maximum values of the occupancy-weighted average B-factor per residue. The column labelled ‘Q < 0.9’ lists the number of (and percentage) of residues with an average occupancy less than 0.9.

Mol	Chain	Analysed	<RSRZ>	#RSRZ>2	OWAB(Å ²)	Q<0.9
1	A	298/298 (100%)	0.80	29 (9%) 15 8	54, 98, 134, 151	0
2	B	323/323 (100%)	0.35	21 (6%) 26 15	47, 75, 132, 151	0
All	All	621/621 (100%)	0.56	50 (8%) 19 11	47, 90, 133, 151	0

All (50) RSRZ outliers are listed below:

Mol	Chain	Res	Type	RSRZ
1	A	245	HIS	4.8
2	B	28	ALA	4.5
2	B	256	GLU	4.2
1	A	247	ILE	3.9
1	A	89	THR	3.7
1	A	121	ILE	3.6
2	B	318	SER	3.5
2	B	266	THR	3.5
2	B	292	ASP	3.5
1	A	248	MET	3.4
2	B	173	PRO	3.3
1	A	152	ASN	3.3
2	B	293	LEU	3.2
1	A	228	LEU	3.2
1	A	77	GLY	3.1
1	A	250	GLY	3.1
2	B	172	LEU	3.0
1	A	117	ARG	2.9
1	A	297	SER	2.8
1	A	183	ILE	2.7
1	A	251	GLY	2.7
1	A	213	ALA	2.7
1	A	78	SER	2.7
1	A	107	ILE	2.6

Continued on next page...

Continued from previous page...

Mol	Chain	Res	Type	RSRZ
1	A	119	ASP	2.6
2	B	35	SER	2.6
2	B	288	LYS	2.6
2	B	290	ILE	2.5
1	A	318	THR	2.4
2	B	264	ASN	2.4
1	A	243	THR	2.4
2	B	81	GLY	2.3
1	A	85	GLN	2.3
1	A	231	VAL	2.3
2	B	65	SER	2.2
2	B	301	SER	2.2
1	A	92	ASP	2.2
1	A	116	LEU	2.2
1	A	88	ARG	2.2
1	A	104	VAL	2.2
1	A	227	GLU	2.1
2	B	299	TRP	2.1
2	B	322	ASP	2.1
2	B	252	LEU	2.1
2	B	29	ASP	2.1
2	B	123	SER	2.1
1	A	140	THR	2.1
1	A	173	GLY	2.1
2	B	348	LEU	2.0
1	A	281	ASP	2.0

6.2 Non-standard residues in protein, DNA, RNA chains [\(i\)](#)

There are no non-standard protein/DNA/RNA residues in this entry.

6.3 Carbohydrates [\(i\)](#)

In the following table, the Atoms column lists the number of modelled atoms in the group and the number defined in the chemical component dictionary. The B-factors column lists the minimum, median, 95th percentile and maximum values of B factors of atoms in the group. The column labelled 'Q< 0.9' lists the number of atoms with occupancy less than 0.9.

Mol	Type	Chain	Res	Atoms	RSCC	RSR	B-factors(Å ²)	Q<0.9
5	MAN	F	4	11/12	0.48	0.16	140,150,154,154	0
4	NAG	D	1	14/15	0.55	0.20	30,30,30,30	0

Continued on next page...

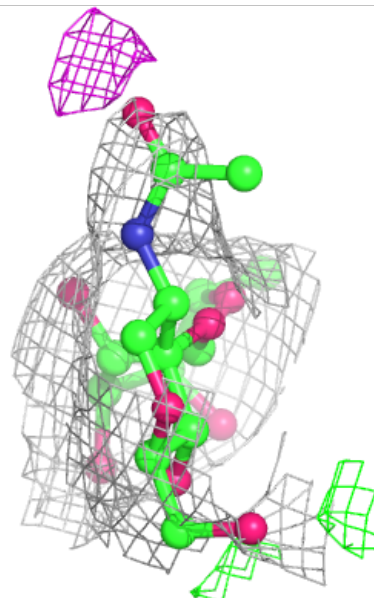
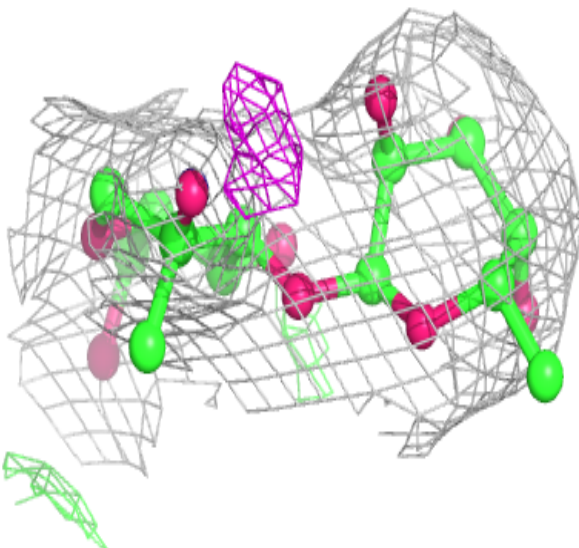
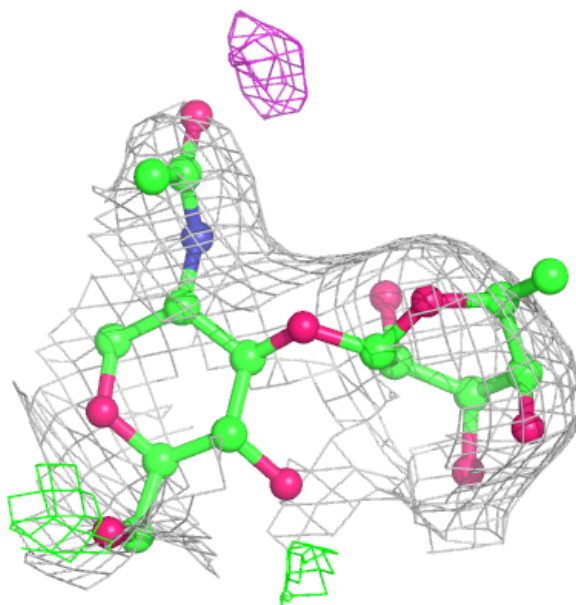
Continued from previous page...

Mol	Type	Chain	Res	Atoms	RSCC	RSR	B-factors(\AA^2)	Q<0.9
5	BMA	F	3	11/12	0.60	0.15	126,137,140,149	0
4	NAG	D	2	14/15	0.64	0.17	30,30,30,30	0
5	NAG	F	2	14/15	0.70	0.20	108,125,133,133	0
4	NAG	E	2	14/15	0.74	0.16	113,126,140,140	0
3	FUC	C	2	10/11	0.74	0.13	123,131,138,141	0
3	NAG	C	1	14/15	0.77	0.16	106,122,127,131	0
4	NAG	G	2	14/15	0.84	0.14	76,86,97,97	0
5	NAG	F	1	14/15	0.88	0.15	91,104,115,122	0
4	NAG	E	1	14/15	0.91	0.12	101,107,120,121	0
4	NAG	G	1	14/15	0.94	0.09	58,66,71,75	0

The following is a graphical depiction of the model fit to experimental electron density for oligosaccharide. Each fit is shown from different orientation to approximate a three-dimensional view.

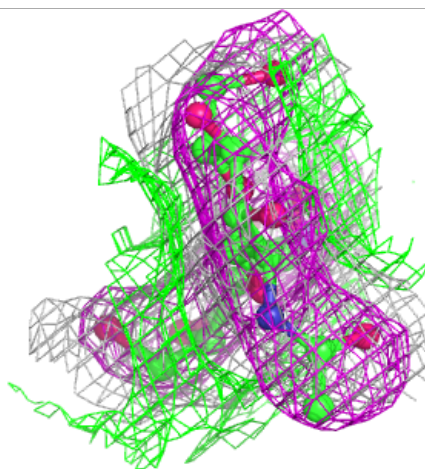
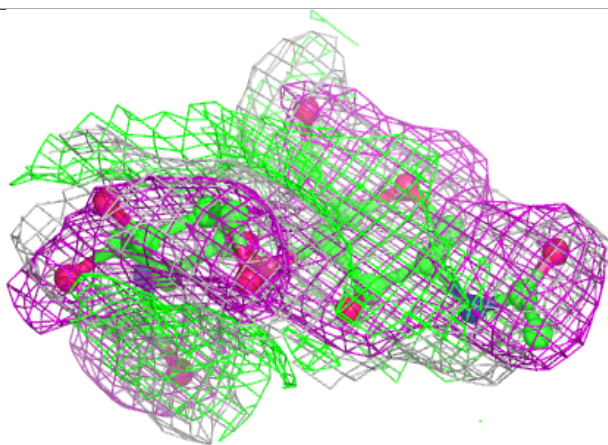
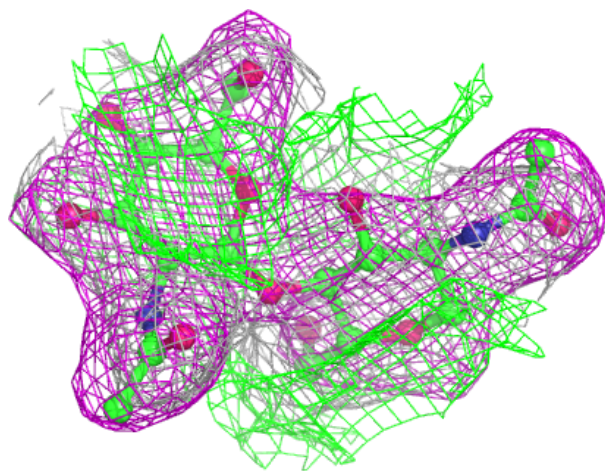
Electron density around Chain C:

$2mF_o-DF_c$ (at 0.7 rmsd) in gray
 mF_o-DF_c (at 3 rmsd) in purple (negative)
and green (positive)



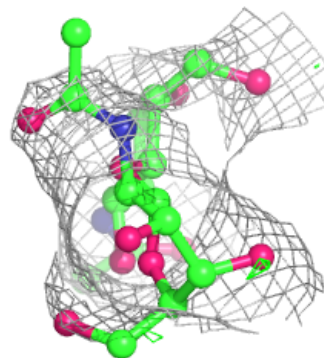
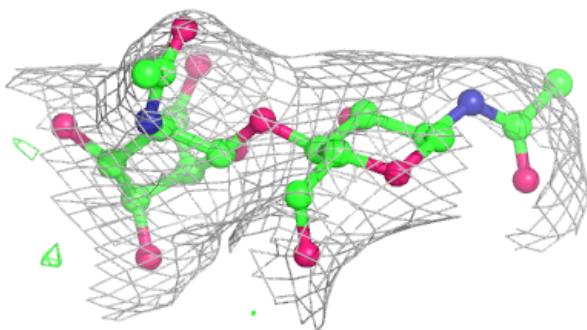
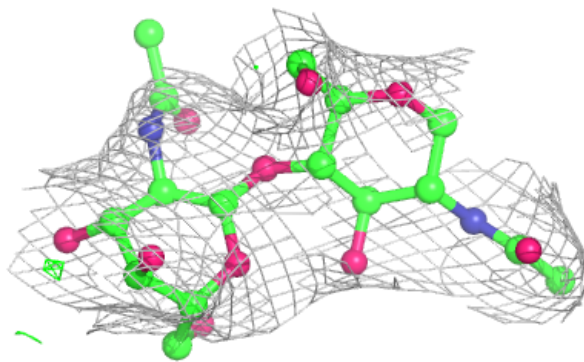
Electron density around Chain D:

$2mF_o-DF_c$ (at 0.7 rmsd) in gray
 mF_o-DF_c (at 3 rmsd) in purple (negative)
and green (positive)



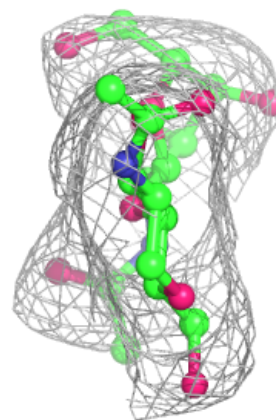
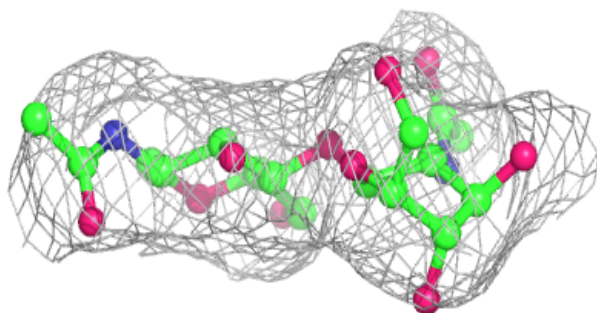
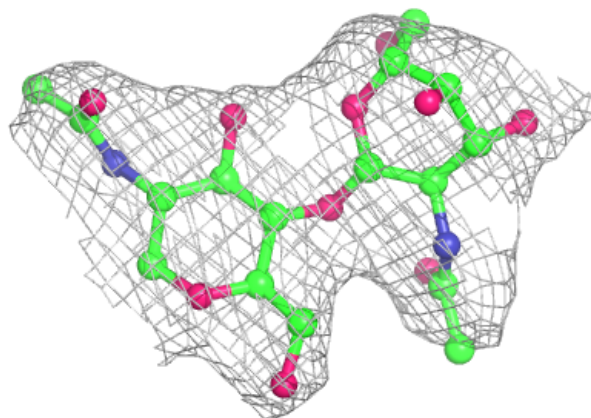
Electron density around Chain E:

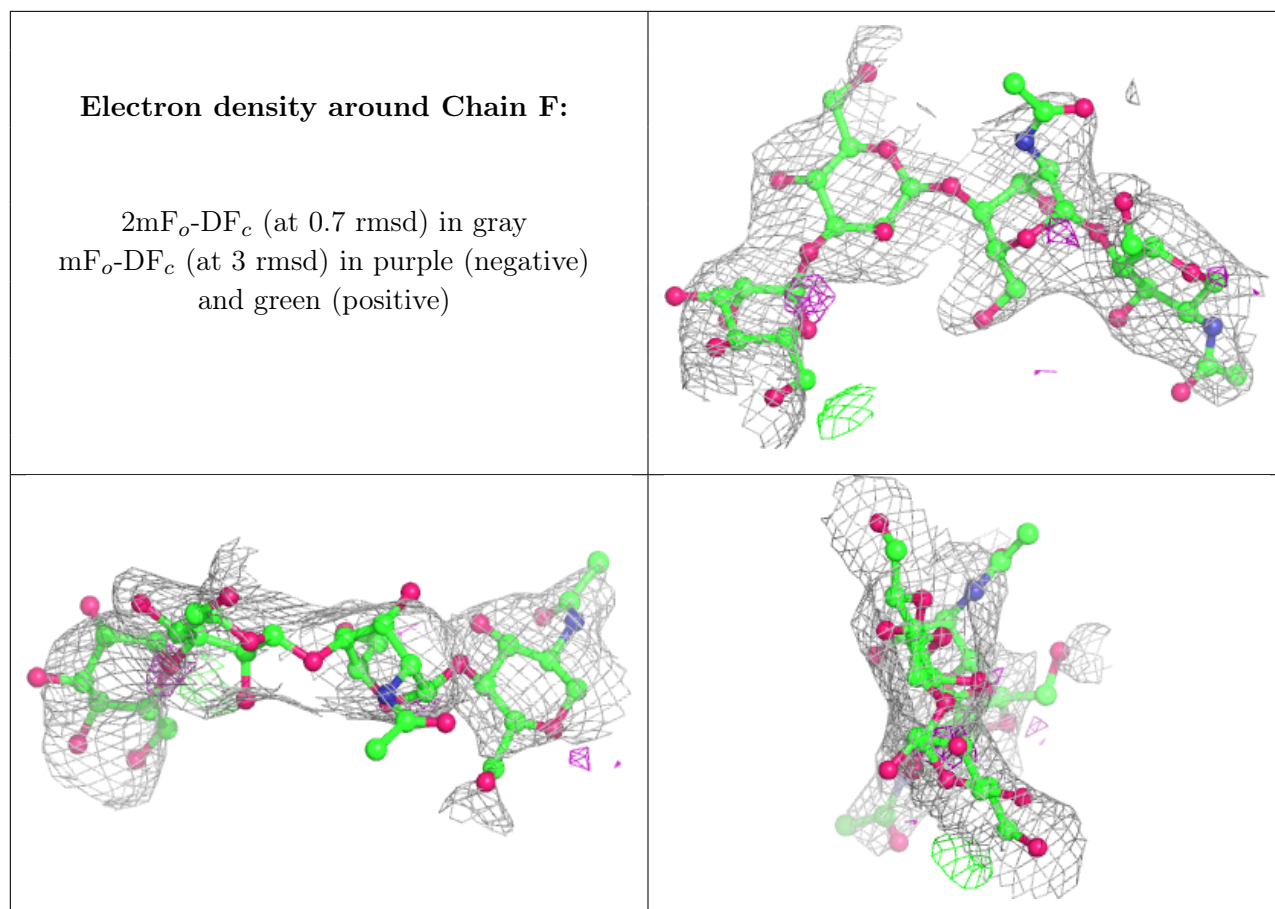
$2mF_o-DF_c$ (at 0.7 rmsd) in gray
 mF_o-DF_c (at 3 rmsd) in purple (negative)
and green (positive)



Electron density around Chain G:

$2mF_o-DF_c$ (at 0.7 rmsd) in gray
 mF_o-DF_c (at 3 rmsd) in purple (negative)
and green (positive)





6.4 Ligands [i](#)

In the following table, the Atoms column lists the number of modelled atoms in the group and the number defined in the chemical component dictionary. The B-factors column lists the minimum, median, 95th percentile and maximum values of B factors of atoms in the group. The column labelled 'Q< 0.9' lists the number of atoms with occupancy less than 0.9.

Mol	Type	Chain	Res	Atoms	RSCC	RSR	B-factors(\AA^2)	Q<0.9
6	NAG	B	403	14/15	0.72	0.16	109,121,125,128	0
6	NAG	A	1103	14/15	0.73	0.16	110,122,128,130	0
7	ZN	B	412	1/1	0.96	0.05	98,98,98,98	0
7	ZN	B	413	1/1	0.98	0.12	146,146,146,146	0
7	ZN	B	414	1/1	0.99	0.02	62,62,62,62	0

6.5 Other polymers [i](#)

There are no such residues in this entry.