



Full wwPDB EM Validation Report ⓘ

Feb 25, 2024 – 11:54 AM EST

PDB ID : 6WYL
EMDB ID : EMD-21968
Title : Cryo-EM structure of GltPh L152C-G351C mutant in the intermediate outward-facing state.
Authors : Font, J.; Chen, I.; Sobti, M.; Stewart, A.G.; Ryan, R.M.
Deposited on : 2020-05-13
Resolution : 3.90 Å(reported)

This is a Full wwPDB EM Validation Report for a publicly released PDB entry.

We welcome your comments at validation@mail.wwpdb.org

A user guide is available at

<https://www.wwpdb.org/validation/2017/EMValidationReportHelp>

with specific help available everywhere you see the ⓘ symbol.

The types of validation reports are described at

<http://www.wwpdb.org/validation/2017/FAQs#types>.

The following versions of software and data (see [references ⓘ](#)) were used in the production of this report:

EMDB validation analysis : 0.0.1.dev70
Mogul : 1.8.5 (274361), CSD as541be (2020)
MolProbity : 4.02b-467
Percentile statistics : 20191225.v01 (using entries in the PDB archive December 25th 2019)
MapQ : 1.9.13
Ideal geometry (proteins) : Engh & Huber (2001)
Ideal geometry (DNA, RNA) : Parkinson et al. (1996)
Validation Pipeline (wwPDB-VP) : 2.36

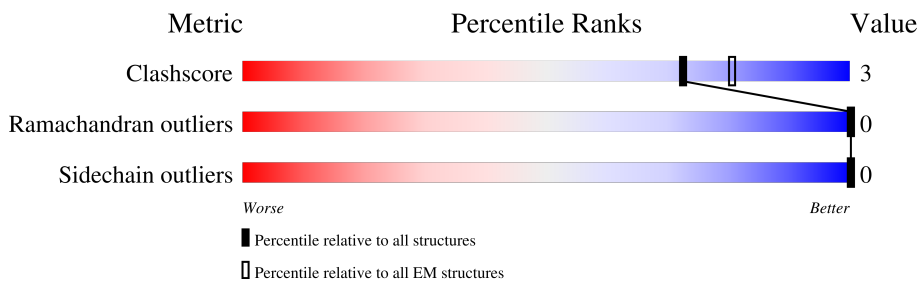
1 Overall quality at a glance

The following experimental techniques were used to determine the structure:

ELECTRON MICROSCOPY

The reported resolution of this entry is 3.90 Å.

Percentile scores (ranging between 0-100) for global validation metrics of the entry are shown in the following graphic. The table shows the number of entries on which the scores are based.



Metric	Whole archive (#Entries)	EM structures (#Entries)
Clashscore	158937	4297
Ramachandran outliers	154571	4023
Sidechain outliers	154315	3826

The table below summarises the geometric issues observed across the polymeric chains and their fit to the map. The red, orange, yellow and green segments of the bar indicate the fraction of residues that contain outliers for ≥ 3 , 2, 1 and 0 types of geometric quality criteria respectively. A grey segment represents the fraction of residues that are not modelled. The numeric value for each fraction is indicated below the corresponding segment, with a dot representing fractions $\leq 5\%$. The upper red bar (where present) indicates the fraction of residues that have poor fit to the EM map (all-atom inclusion $< 40\%$). The numeric value is given above the bar.

Mol	Chain	Length	Quality of chain
1	A	422	
1	B	422	
1	C	422	

The following table lists non-polymeric compounds, carbohydrate monomers and non-standard residues in protein, DNA, RNA chains that are outliers for geometric or electron-density-fit criteria:

Mol	Type	Chain	Res	Chirality	Geometry	Clashes	Electron density
2	ASP	A	501	-	-	X	-
2	ASP	B	501	-	-	X	-

Continued on next page...

Continued from previous page...

Mol	Type	Chain	Res	Chirality	Geometry	Clashes	Electron density
2	ASP	C	501	-	-	X	-

2 Entry composition

There are 2 unique types of molecules in this entry. The entry contains 8847 atoms, of which 0 are hydrogens and 0 are deuteriums.

In the tables below, the AltConf column contains the number of residues with at least one atom in alternate conformation and the Trace column contains the number of residues modelled with at most 2 atoms.

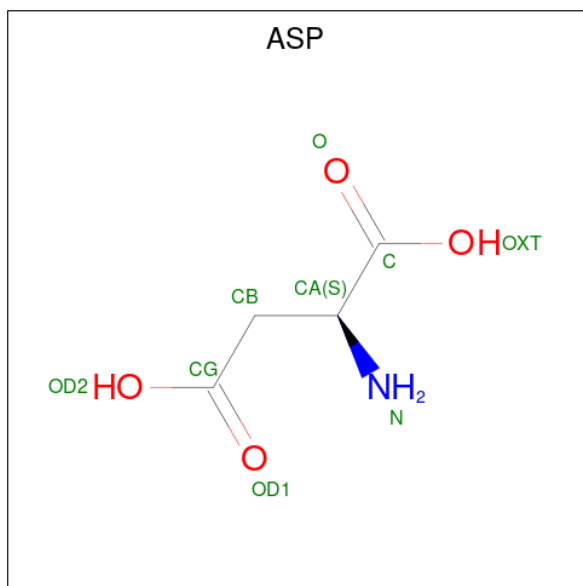
- Molecule 1 is a protein called Glutamate transporter homolog.

Mol	Chain	Residues	Atoms					AltConf	Trace
			Total	C	N	O	S		
1	A	397	2940	1938	464	520	18	0	0
1	B	397	2940	1938	464	520	18	0	0
1	C	397	2940	1938	464	520	18	0	0

There are 24 discrepancies between the modelled and reference sequences:

Chain	Residue	Modelled	Actual	Comment	Reference
A	152	CYS	LEU	engineered mutation	UNP O59010
A	321	SER	CYS	engineered mutation	UNP O59010
A	351	CYS	GLY	engineered mutation	UNP O59010
A	418	THR	-	expression tag	UNP O59010
A	419	LEU	-	expression tag	UNP O59010
A	420	VAL	-	expression tag	UNP O59010
A	421	PRO	-	expression tag	UNP O59010
A	422	ARG	-	expression tag	UNP O59010
B	152	CYS	LEU	engineered mutation	UNP O59010
B	321	SER	CYS	engineered mutation	UNP O59010
B	351	CYS	GLY	engineered mutation	UNP O59010
B	418	THR	-	expression tag	UNP O59010
B	419	LEU	-	expression tag	UNP O59010
B	420	VAL	-	expression tag	UNP O59010
B	421	PRO	-	expression tag	UNP O59010
B	422	ARG	-	expression tag	UNP O59010
C	152	CYS	LEU	engineered mutation	UNP O59010
C	321	SER	CYS	engineered mutation	UNP O59010
C	351	CYS	GLY	engineered mutation	UNP O59010
C	418	THR	-	expression tag	UNP O59010
C	419	LEU	-	expression tag	UNP O59010
C	420	VAL	-	expression tag	UNP O59010
C	421	PRO	-	expression tag	UNP O59010
C	422	ARG	-	expression tag	UNP O59010

- Molecule 2 is ASPARTIC ACID (three-letter code: ASP) (formula: C₄H₇NO₄).

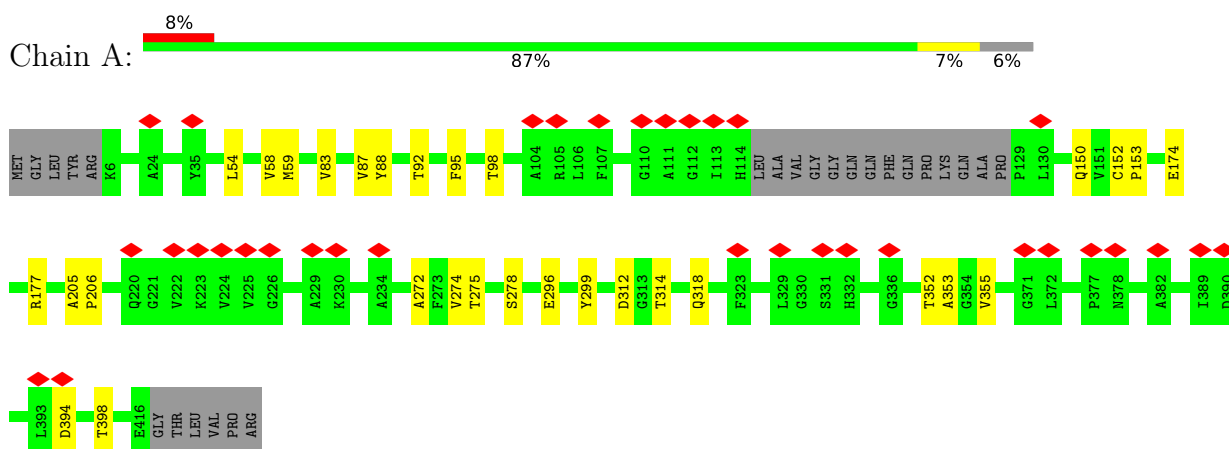


Mol	Chain	Residues	Atoms				AltConf
2	A	1	Total	C	N	O	0
			9	4	1	4	
2	B	1	Total	C	N	O	0
			9	4	1	4	
2	C	1	Total	C	N	O	0
			9	4	1	4	

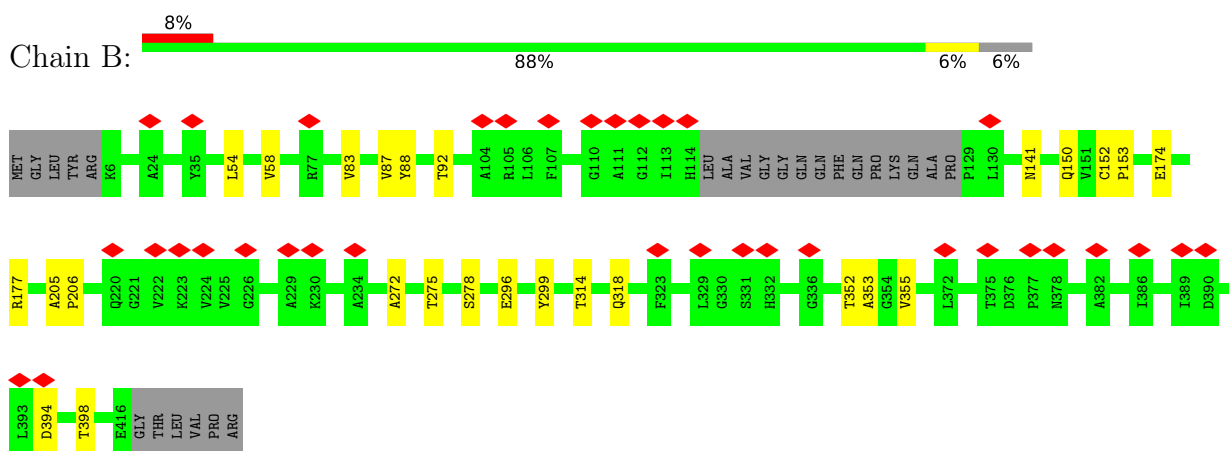
3 Residue-property plots [i](#)

These plots are drawn for all protein, RNA, DNA and oligosaccharide chains in the entry. The first graphic for a chain summarises the proportions of the various outlier classes displayed in the second graphic. The second graphic shows the sequence view annotated by issues in geometry and atom inclusion in map density. Residues are color-coded according to the number of geometric quality criteria for which they contain at least one outlier: green = 0, yellow = 1, orange = 2 and red = 3 or more. A red diamond above a residue indicates a poor fit to the EM map for this residue (all-atom inclusion < 40%). Stretches of 2 or more consecutive residues without any outlier are shown as a green connector. Residues present in the sample, but not in the model, are shown in grey.

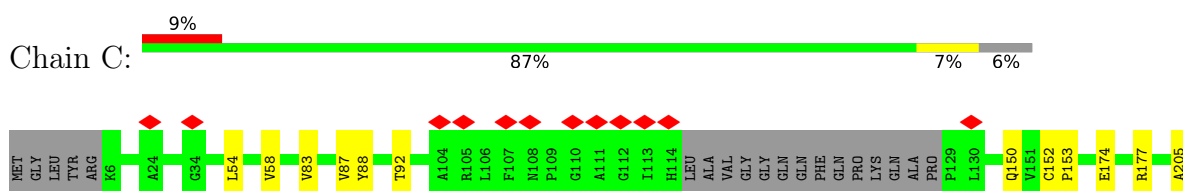
- Molecule 1: Glutamate transporter homolog

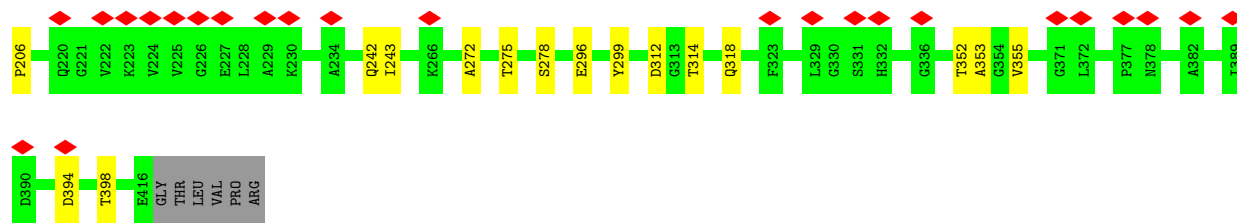


- Molecule 1: Glutamate transporter homolog



- Molecule 1: Glutamate transporter homolog





4 Experimental information

Property	Value	Source
EM reconstruction method	SINGLE PARTICLE	Depositor
Imposed symmetry	POINT, C3	Depositor
Number of particles used	220938	Depositor
Resolution determination method	FSC 0.143 CUT-OFF	Depositor
CTF correction method	PHASE FLIPPING AND AMPLITUDE CORRECTION	Depositor
Microscope	FEI TALOS ARCTICA	Depositor
Voltage (kV)	200	Depositor
Electron dose ($e^-/\text{\AA}^2$)	40	Depositor
Minimum defocus (nm)	Not provided	
Maximum defocus (nm)	Not provided	
Magnification	Not provided	
Image detector	FEI FALCON III (4k x 4k)	Depositor
Maximum map value	0.191	Depositor
Minimum map value	-0.106	Depositor
Average map value	-0.000	Depositor
Map value standard deviation	0.005	Depositor
Recommended contour level	0.027	Depositor
Map size (Å)	252.416, 252.416, 252.416	wwPDB
Map dimensions	256, 256, 256	wwPDB
Map angles (°)	90.0, 90.0, 90.0	wwPDB
Pixel spacing (Å)	0.986, 0.986, 0.986	Depositor

5 Model quality [i](#)

5.1 Standard geometry [i](#)

The Z score for a bond length (or angle) is the number of standard deviations the observed value is removed from the expected value. A bond length (or angle) with $|Z| > 5$ is considered an outlier worth inspection. RMSZ is the root-mean-square of all Z scores of the bond lengths (or angles).

Mol	Chain	Bond lengths		Bond angles	
		RMSZ	$\# Z > 5$	RMSZ	$\# Z > 5$
1	A	0.52	0/2989	0.57	0/4068
1	B	0.52	0/2989	0.57	0/4068
1	C	0.52	0/2989	0.57	0/4068
All	All	0.52	0/8967	0.57	0/12204

There are no bond length outliers.

There are no bond angle outliers.

There are no chirality outliers.

There are no planarity outliers.

5.2 Too-close contacts [i](#)

In the following table, the Non-H and H(model) columns list the number of non-hydrogen atoms and hydrogen atoms in the chain respectively. The H(added) column lists the number of hydrogen atoms added and optimized by MolProbity. The Clashes column lists the number of clashes within the asymmetric unit, whereas Symm-Clashes lists symmetry-related clashes.

Mol	Chain	Non-H	H(model)	H(added)	Clashes	Symm-Clashes
1	A	2940	0	3145	23	0
1	B	2940	0	3145	20	0
1	C	2940	0	3145	21	0
2	A	9	0	3	4	0
2	B	9	0	3	4	0
2	C	9	0	3	4	0
All	All	8847	0	9444	63	0

The all-atom clashscore is defined as the number of clashes found per 1000 atoms (including hydrogen atoms). The all-atom clashscore for this structure is 3.

All (63) close contacts within the same asymmetric unit are listed below, sorted by their clash magnitude.

Atom-1	Atom-2	Interatomic distance (Å)	Clash overlap (Å)
1:B:314:THR:HG22	1:B:318:GLN:HE21	1.52	0.75
1:C:314:THR:HG22	1:C:318:GLN:HE21	1.53	0.73
1:A:314:THR:HG22	1:A:318:GLN:HE21	1.53	0.73
1:B:278:SER:N	2:B:501:ASP:OXT	2.24	0.71
1:C:278:SER:N	2:C:501:ASP:OXT	2.24	0.71
1:A:278:SER:N	2:A:501:ASP:OXT	2.24	0.70
1:A:314:THR:HG22	1:A:318:GLN:NE2	2.07	0.70
1:C:314:THR:HG22	1:C:318:GLN:NE2	2.07	0.69
1:B:314:THR:HG22	1:B:318:GLN:NE2	2.06	0.68
1:B:355:VAL:O	2:B:501:ASP:N	2.29	0.66
1:C:355:VAL:O	2:C:501:ASP:N	2.29	0.65
1:A:355:VAL:O	2:A:501:ASP:N	2.29	0.65
1:A:174:GLU:OE2	1:A:177:ARG:NH1	2.42	0.53
1:B:54:LEU:O	1:B:58:VAL:HG23	2.09	0.52
1:A:352:THR:HG22	1:A:353:ALA:N	2.25	0.52
1:B:174:GLU:OE2	1:B:177:ARG:NH1	2.42	0.52
1:B:352:THR:HG22	1:B:353:ALA:N	2.25	0.52
1:C:54:LEU:O	1:C:58:VAL:HG23	2.09	0.52
1:C:352:THR:HG22	1:C:353:ALA:N	2.25	0.52
1:B:296:GLU:HA	1:B:299:TYR:CE2	2.45	0.52
1:C:296:GLU:HA	1:C:299:TYR:CE2	2.45	0.51
1:A:54:LEU:O	1:A:58:VAL:HG23	2.10	0.51
1:A:296:GLU:HA	1:A:299:TYR:CE2	2.45	0.51
1:C:152:CYS:HB2	1:C:153:PRO:HD3	1.93	0.50
1:C:174:GLU:OE2	1:C:177:ARG:NH1	2.42	0.50
1:A:150:GLN:N	1:A:150:GLN:OE1	2.45	0.49
1:B:152:CYS:HB2	1:B:153:PRO:HD3	1.93	0.49
1:C:150:GLN:N	1:C:150:GLN:OE1	2.45	0.49
1:A:314:THR:CG2	1:A:318:GLN:HE21	2.24	0.49
1:B:150:GLN:OE1	1:B:150:GLN:N	2.45	0.49
1:A:152:CYS:HB2	1:A:153:PRO:HD3	1.93	0.49
1:B:314:THR:CG2	1:B:318:GLN:HE21	2.23	0.49
1:C:83:VAL:O	1:C:87:VAL:HG23	2.14	0.48
1:A:83:VAL:O	1:A:87:VAL:HG23	2.14	0.48
1:B:83:VAL:O	1:B:87:VAL:HG23	2.14	0.47
1:A:59:MET:HG3	1:B:141:ASN:HD21	1.80	0.47
1:C:314:THR:CG2	1:C:318:GLN:HE21	2.24	0.46
1:A:205:ALA:N	1:A:206:PRO:HD2	2.32	0.45
1:B:205:ALA:N	1:B:206:PRO:HD2	2.32	0.45
1:C:205:ALA:N	1:C:206:PRO:HD2	2.32	0.45
1:A:272:ALA:O	1:A:275:THR:O	2.36	0.44
1:B:272:ALA:O	1:B:275:THR:O	2.35	0.44

Continued on next page...

Continued from previous page...

Atom-1	Atom-2	Interatomic distance (Å)	Clash overlap (Å)
1:A:312:ASP:OD2	1:A:312:ASP:N	2.51	0.43
1:C:272:ALA:O	1:C:275:THR:O	2.35	0.43
1:C:312:ASP:OD2	1:C:312:ASP:N	2.51	0.43
1:B:394:ASP:OD1	2:B:501:ASP:OD1	2.38	0.42
1:C:394:ASP:OD1	2:C:501:ASP:OD1	2.38	0.42
1:A:394:ASP:OD1	2:A:501:ASP:OD1	2.38	0.42
1:C:150:GLN:N	1:C:150:GLN:CD	2.73	0.41
1:A:272:ALA:HB1	1:A:398:THR:HG22	2.03	0.41
1:C:278:SER:HB2	2:C:501:ASP:O	2.21	0.41
1:A:150:GLN:N	1:A:150:GLN:CD	2.74	0.41
1:B:150:GLN:N	1:B:150:GLN:CD	2.74	0.41
1:C:88:TYR:CE1	1:C:92:THR:HG21	2.56	0.41
1:B:272:ALA:HB1	1:B:398:THR:HG22	2.03	0.41
1:C:272:ALA:HB1	1:C:398:THR:HG22	2.03	0.41
1:B:278:SER:HB2	2:B:501:ASP:O	2.21	0.41
1:B:88:TYR:CE1	1:B:92:THR:HG21	2.56	0.40
1:C:242:GLN:O	1:C:243:ILE:C	2.60	0.40
1:A:274:VAL:HG23	1:A:275:THR:N	2.36	0.40
1:A:88:TYR:CE1	1:A:92:THR:HG21	2.56	0.40
1:A:95:PHE:O	1:A:98:THR:HG22	2.21	0.40
1:A:278:SER:HB2	2:A:501:ASP:O	2.21	0.40

There are no symmetry-related clashes.

5.3 Torsion angles [\(i\)](#)

5.3.1 Protein backbone [\(i\)](#)

In the following table, the Percentiles column shows the percent Ramachandran outliers of the chain as a percentile score with respect to all PDB entries followed by that with respect to all EM entries.

The Analysed column shows the number of residues for which the backbone conformation was analysed, and the total number of residues.

Mol	Chain	Analysed	Favoured	Allowed	Outliers	Percentiles	
1	A	393/422 (93%)	382 (97%)	11 (3%)	0	100	100
1	B	393/422 (93%)	383 (98%)	10 (2%)	0	100	100
1	C	393/422 (93%)	382 (97%)	11 (3%)	0	100	100
All	All	1179/1266 (93%)	1147 (97%)	32 (3%)	0	100	100

There are no Ramachandran outliers to report.

5.3.2 Protein sidechains [i](#)

In the following table, the Percentiles column shows the percent sidechain outliers of the chain as a percentile score with respect to all PDB entries followed by that with respect to all EM entries.

The Analysed column shows the number of residues for which the sidechain conformation was analysed, and the total number of residues.

Mol	Chain	Analysed	Rotameric	Outliers	Percentiles	
1	A	312/331 (94%)	312 (100%)	0	100	100
1	B	312/331 (94%)	312 (100%)	0	100	100
1	C	312/331 (94%)	312 (100%)	0	100	100
All	All	936/993 (94%)	936 (100%)	0	100	100

There are no protein residues with a non-rotameric sidechain to report.

Sometimes sidechains can be flipped to improve hydrogen bonding and reduce clashes. All (6) such sidechains are listed below:

Mol	Chain	Res	Type
1	A	310	ASN
1	A	318	GLN
1	B	310	ASN
1	B	318	GLN
1	C	310	ASN
1	C	318	GLN

5.3.3 RNA [i](#)

There are no RNA molecules in this entry.

5.4 Non-standard residues in protein, DNA, RNA chains [i](#)

There are no non-standard protein/DNA/RNA residues in this entry.

5.5 Carbohydrates [i](#)

There are no monosaccharides in this entry.

5.6 Ligand geometry

3 ligands are modelled in this entry.

In the following table, the Counts columns list the number of bonds (or angles) for which Mogul statistics could be retrieved, the number of bonds (or angles) that are observed in the model and the number of bonds (or angles) that are defined in the Chemical Component Dictionary. The Link column lists molecule types, if any, to which the group is linked. The Z score for a bond length (or angle) is the number of standard deviations the observed value is removed from the expected value. A bond length (or angle) with $|Z| > 2$ is considered an outlier worth inspection. RMSZ is the root-mean-square of all Z scores of the bond lengths (or angles).

Mol	Type	Chain	Res	Link	Bond lengths			Bond angles		
					Counts	RMSZ	# Z > 2	Counts	RMSZ	# Z > 2
2	ASP	A	501	-	6,8,8	1.15	1 (16%)	8,10,10	1.34	2 (25%)
2	ASP	C	501	-	6,8,8	1.15	1 (16%)	8,10,10	1.33	2 (25%)
2	ASP	B	501	-	6,8,8	1.15	1 (16%)	8,10,10	1.34	2 (25%)

In the following table, the Chirals column lists the number of chiral outliers, the number of chiral centers analysed, the number of these observed in the model and the number defined in the Chemical Component Dictionary. Similar counts are reported in the Torsion and Rings columns. '-' means no outliers of that kind were identified.

Mol	Type	Chain	Res	Link	Chirals	Torsions	Rings
2	ASP	A	501	-	-	7/8/8/8	-
2	ASP	C	501	-	-	7/8/8/8	-
2	ASP	B	501	-	-	7/8/8/8	-

All (3) bond length outliers are listed below:

Mol	Chain	Res	Type	Atoms	Z	Observed(Å)	Ideal(Å)
2	C	501	ASP	OXT-C	-2.04	1.23	1.30
2	B	501	ASP	OXT-C	-2.04	1.23	1.30
2	A	501	ASP	OXT-C	-2.02	1.23	1.30

All (6) bond angle outliers are listed below:

Mol	Chain	Res	Type	Atoms	Z	Observed(°)	Ideal(°)
2	A	501	ASP	OXT-C-CA	2.34	121.37	113.38
2	B	501	ASP	OXT-C-CA	2.34	121.37	113.38
2	C	501	ASP	OXT-C-CA	2.33	121.33	113.38
2	A	501	ASP	OXT-C-O	-2.21	119.07	124.09
2	B	501	ASP	OXT-C-O	-2.20	119.09	124.09
2	C	501	ASP	OXT-C-O	-2.16	119.17	124.09

There are no chirality outliers.

All (21) torsion outliers are listed below:

Mol	Chain	Res	Type	Atoms
2	A	501	ASP	O-C-CA-N
2	B	501	ASP	O-C-CA-N
2	C	501	ASP	O-C-CA-N
2	A	501	ASP	OXT-C-CA-N
2	B	501	ASP	OXT-C-CA-N
2	C	501	ASP	OXT-C-CA-N
2	A	501	ASP	CA-CB-CG-OD1
2	B	501	ASP	CA-CB-CG-OD1
2	B	501	ASP	CA-CB-CG-OD2
2	C	501	ASP	CA-CB-CG-OD1
2	C	501	ASP	CA-CB-CG-OD2
2	A	501	ASP	CA-CB-CG-OD2
2	A	501	ASP	O-C-CA-CB
2	A	501	ASP	OXT-C-CA-CB
2	B	501	ASP	O-C-CA-CB
2	B	501	ASP	OXT-C-CA-CB
2	C	501	ASP	O-C-CA-CB
2	C	501	ASP	OXT-C-CA-CB
2	A	501	ASP	N-CA-CB-CG
2	B	501	ASP	N-CA-CB-CG
2	C	501	ASP	N-CA-CB-CG

There are no ring outliers.

3 monomers are involved in 12 short contacts:

Mol	Chain	Res	Type	Clashes	Symm-Clashes
2	A	501	ASP	4	0
2	C	501	ASP	4	0
2	B	501	ASP	4	0

5.7 Other polymers [i](#)

There are no such residues in this entry.

5.8 Polymer linkage issues [i](#)

There are no chain breaks in this entry.

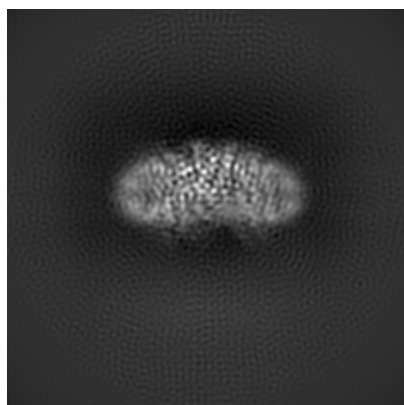
6 Map visualisation [i](#)

This section contains visualisations of the EMDB entry EMD-21968. These allow visual inspection of the internal detail of the map and identification of artifacts.

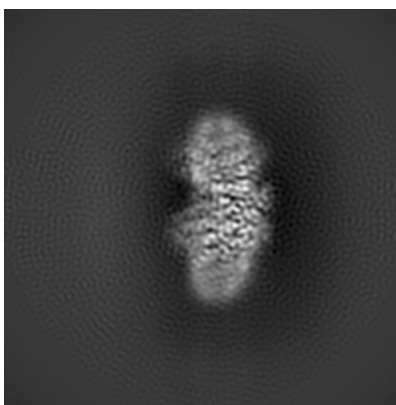
No raw map or half-maps were deposited for this entry and therefore no images, graphs, etc. pertaining to the raw map can be shown.

6.1 Orthogonal projections [i](#)

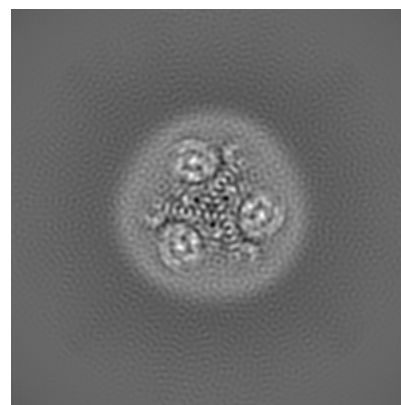
6.1.1 Primary map



X



Y

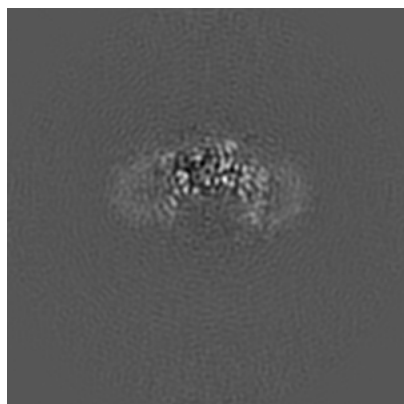


Z

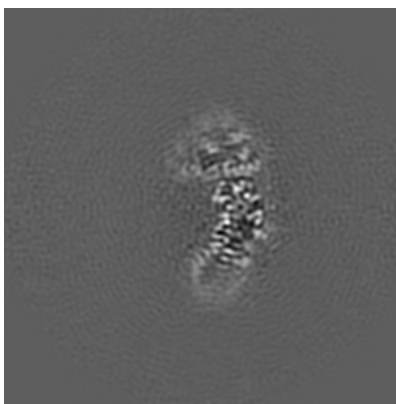
The images above show the map projected in three orthogonal directions.

6.2 Central slices [i](#)

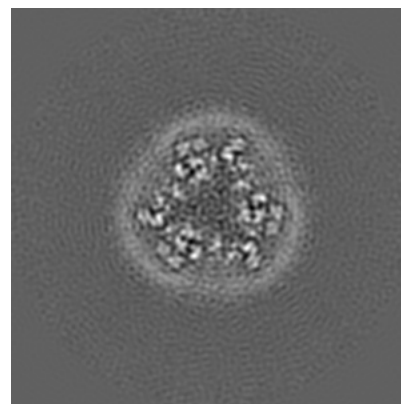
6.2.1 Primary map



X Index: 128



Y Index: 128

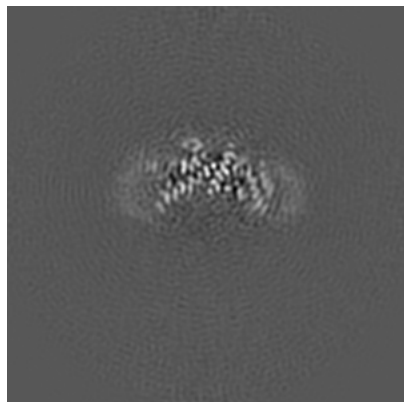


Z Index: 128

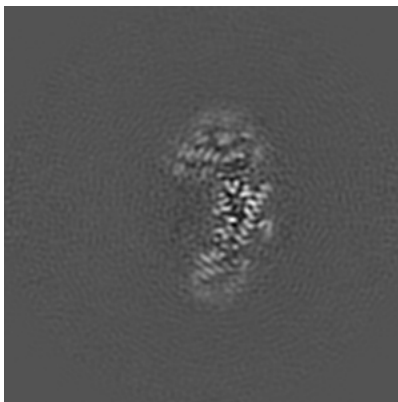
The images above show central slices of the map in three orthogonal directions.

6.3 Largest variance slices [i](#)

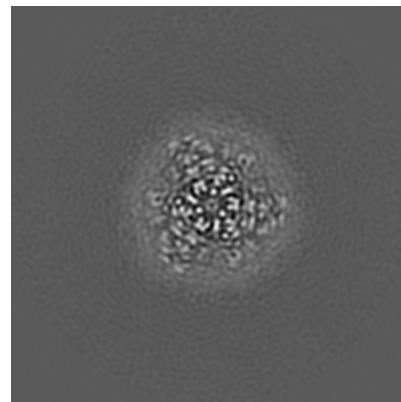
6.3.1 Primary map



X Index: 140



Y Index: 122

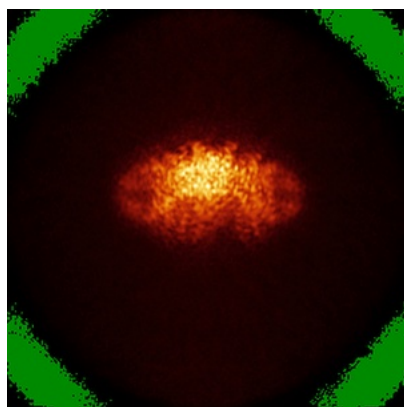


Z Index: 152

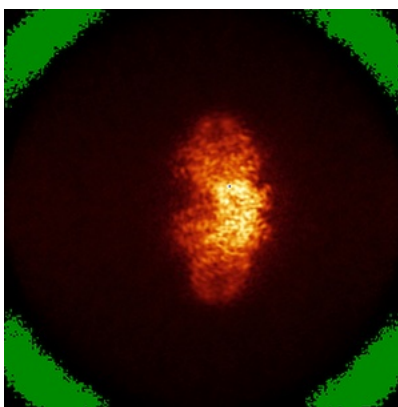
The images above show the largest variance slices of the map in three orthogonal directions.

6.4 Orthogonal standard-deviation projections (False-color) [i](#)

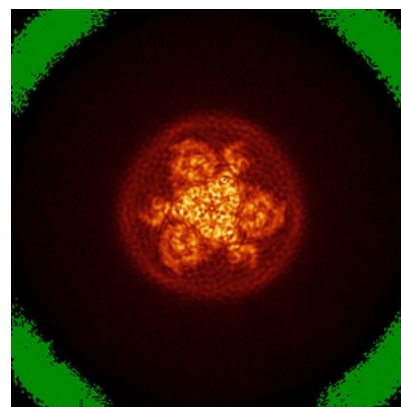
6.4.1 Primary map



X



Y



Z

The images above show the map standard deviation projections with false color in three orthogonal directions. Minimum values are shown in green, max in blue, and dark to light orange shades represent small to large values respectively.

6.5 Orthogonal surface views [i](#)

6.5.1 Primary map



The images above show the 3D surface view of the map at the recommended contour level 0.027. These images, in conjunction with the slice images, may facilitate assessment of whether an appropriate contour level has been provided.

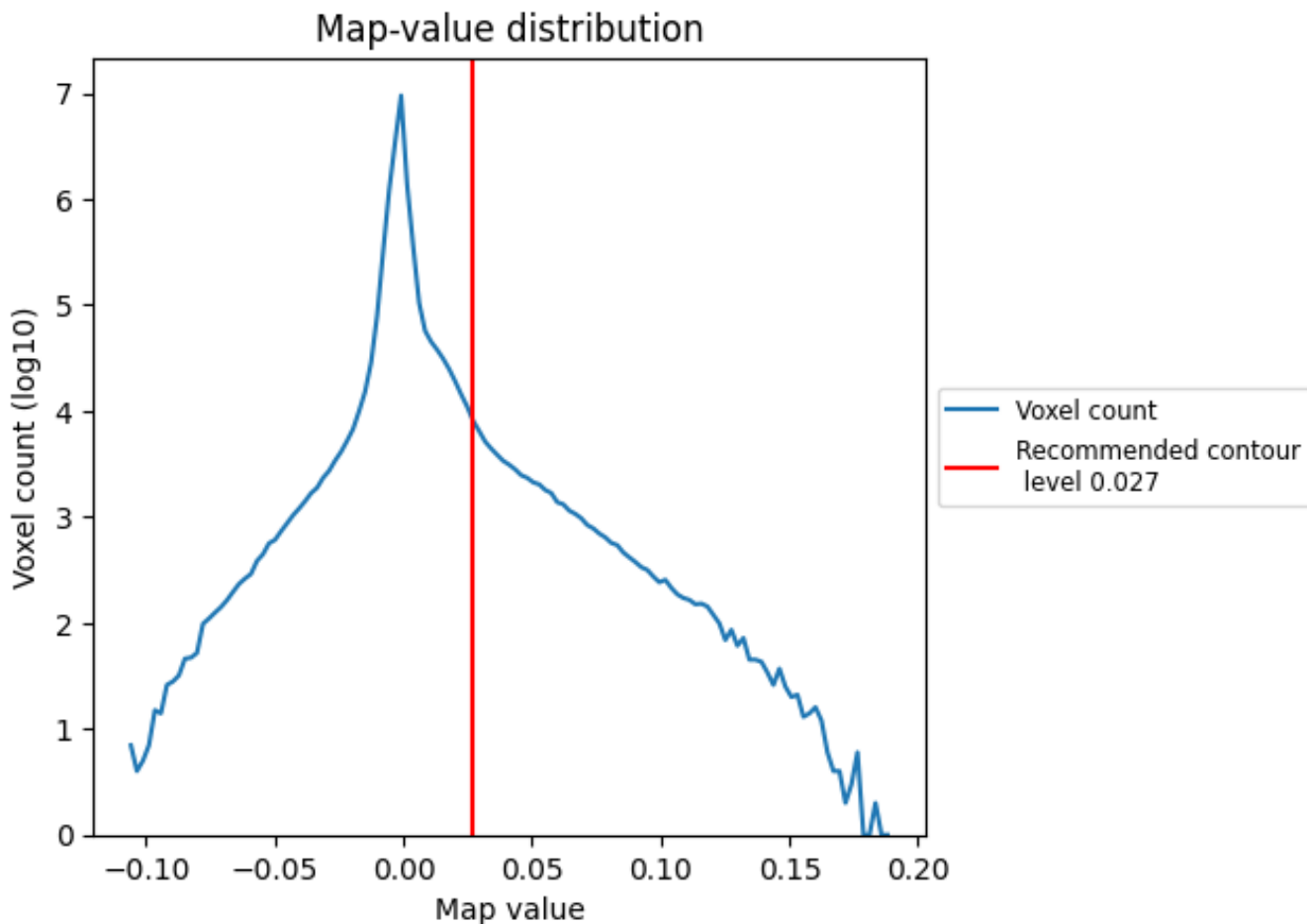
6.6 Mask visualisation [i](#)

This section was not generated. No masks/segmentation were deposited.

7 Map analysis [i](#)

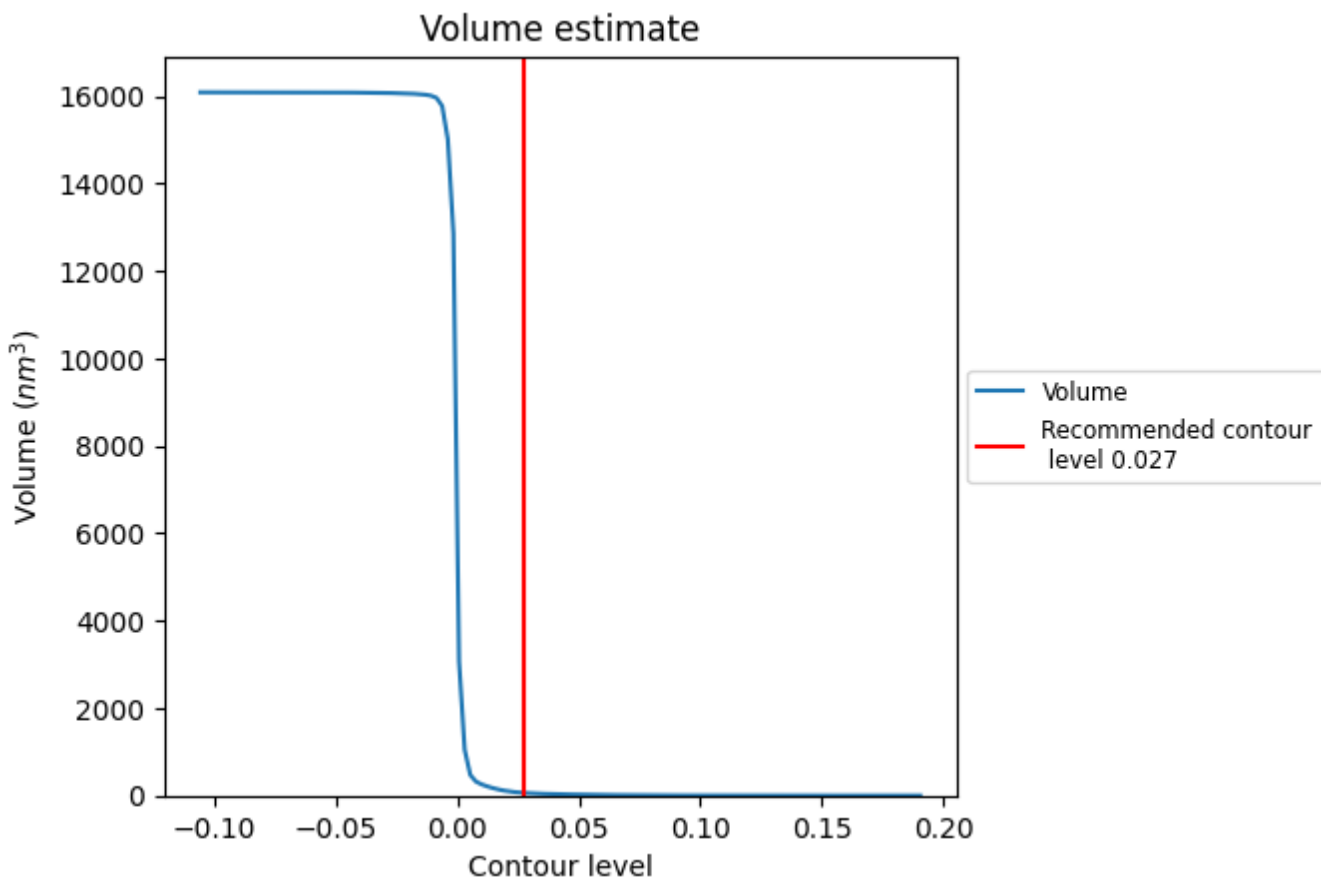
This section contains the results of statistical analysis of the map.

7.1 Map-value distribution [i](#)



The map-value distribution is plotted in 128 intervals along the x-axis. The y-axis is logarithmic. A spike in this graph at zero usually indicates that the volume has been masked.

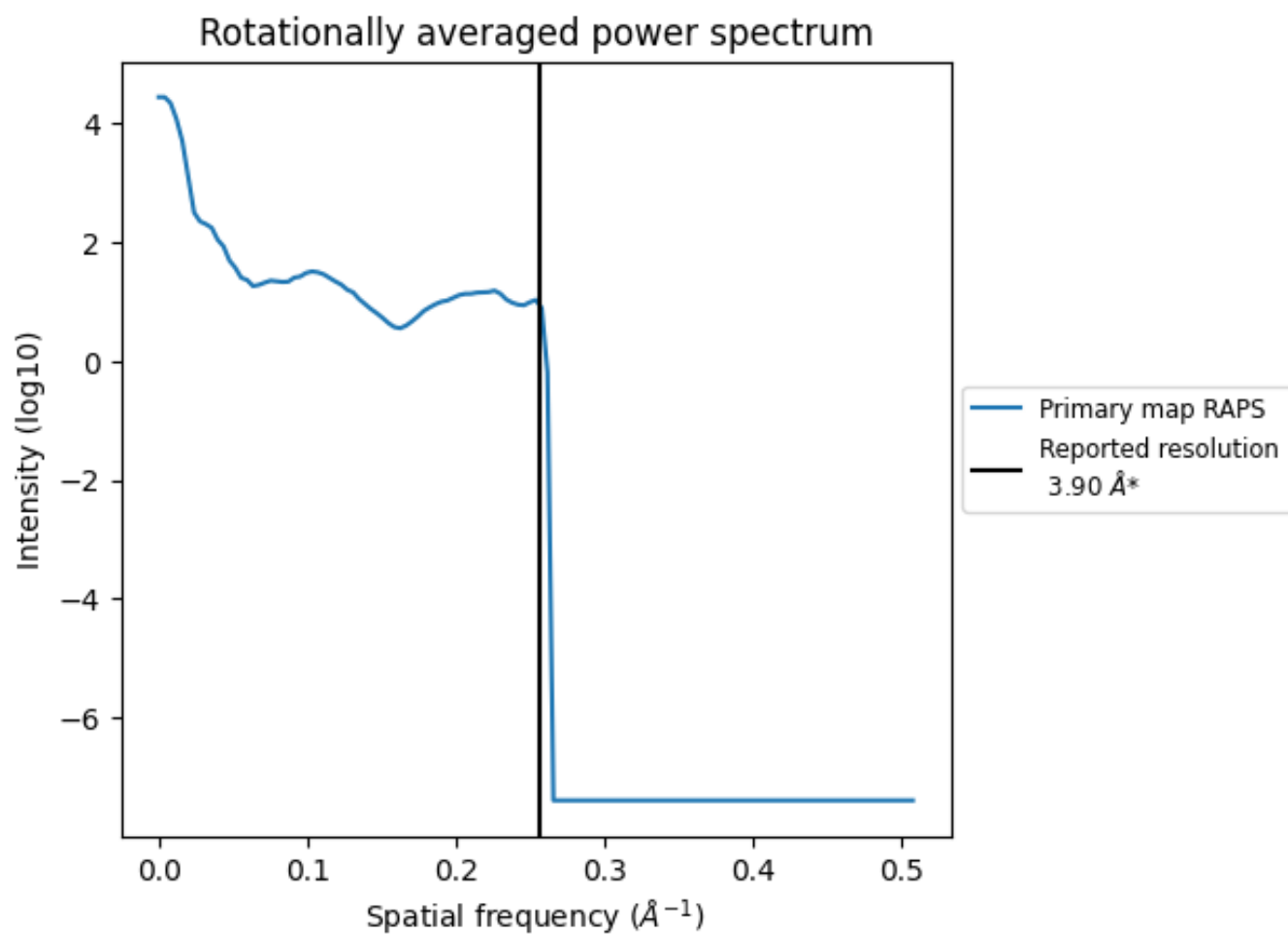
7.2 Volume estimate [i](#)



The volume at the recommended contour level is 63 nm³; this corresponds to an approximate mass of 57 kDa.

The volume estimate graph shows how the enclosed volume varies with the contour level. The recommended contour level is shown as a vertical line and the intersection between the line and the curve gives the volume of the enclosed surface at the given level.

7.3 Rotationally averaged power spectrum [i](#)



*Reported resolution corresponds to spatial frequency of 0.256 Å⁻¹

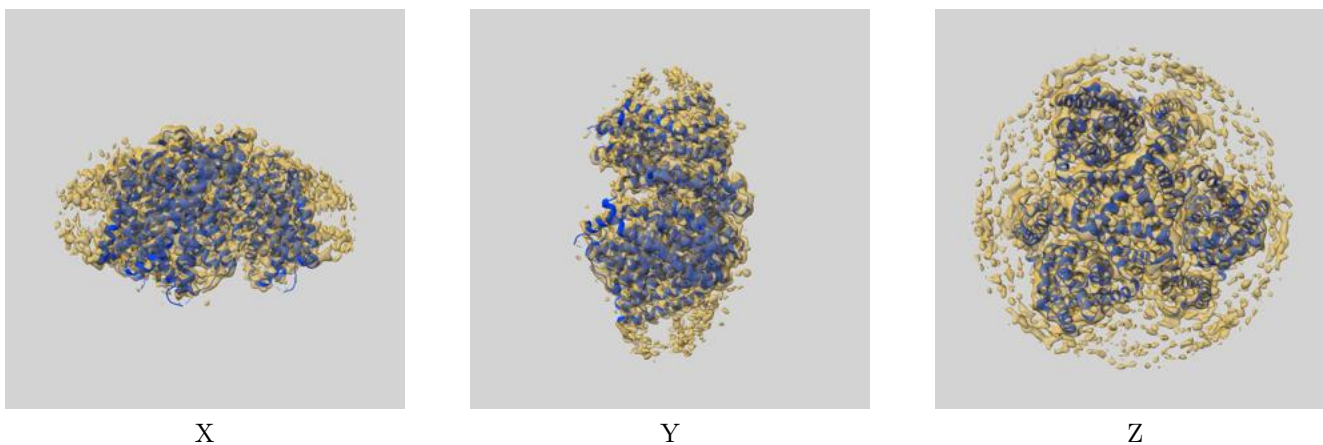
8 Fourier-Shell correlation

This section was not generated. No FSC curve or half-maps provided.

9 Map-model fit [i](#)

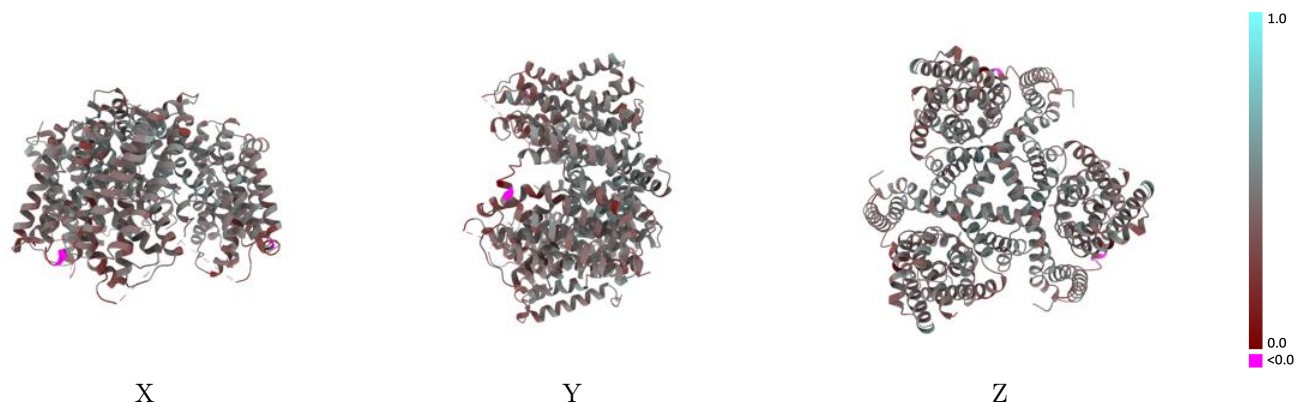
This section contains information regarding the fit between EMDB map EMD-21968 and PDB model 6WYL. Per-residue inclusion information can be found in section [3](#) on page [6](#).

9.1 Map-model overlay [i](#)



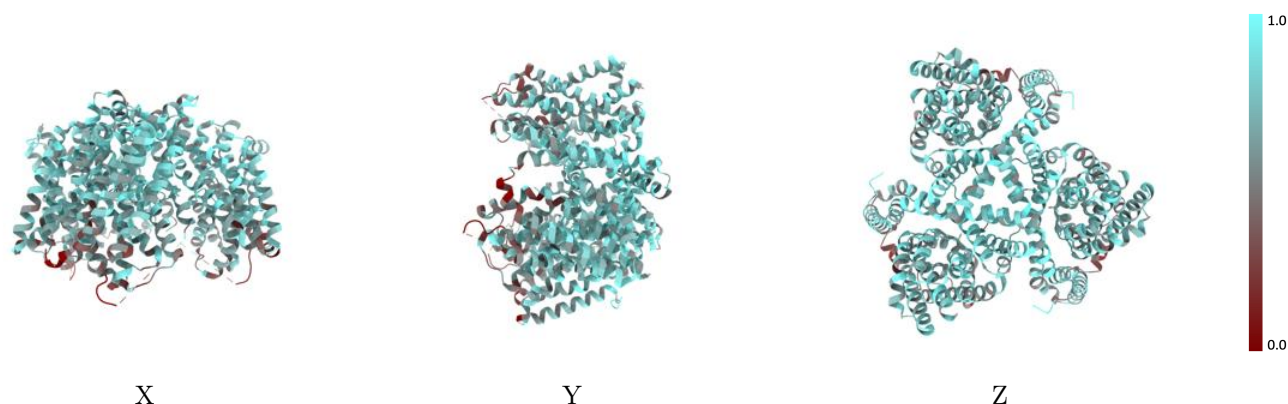
The images above show the 3D surface view of the map at the recommended contour level 0.027 at 50% transparency in yellow overlaid with a ribbon representation of the model coloured in blue. These images allow for the visual assessment of the quality of fit between the atomic model and the map.

9.2 Q-score mapped to coordinate model [\(i\)](#)



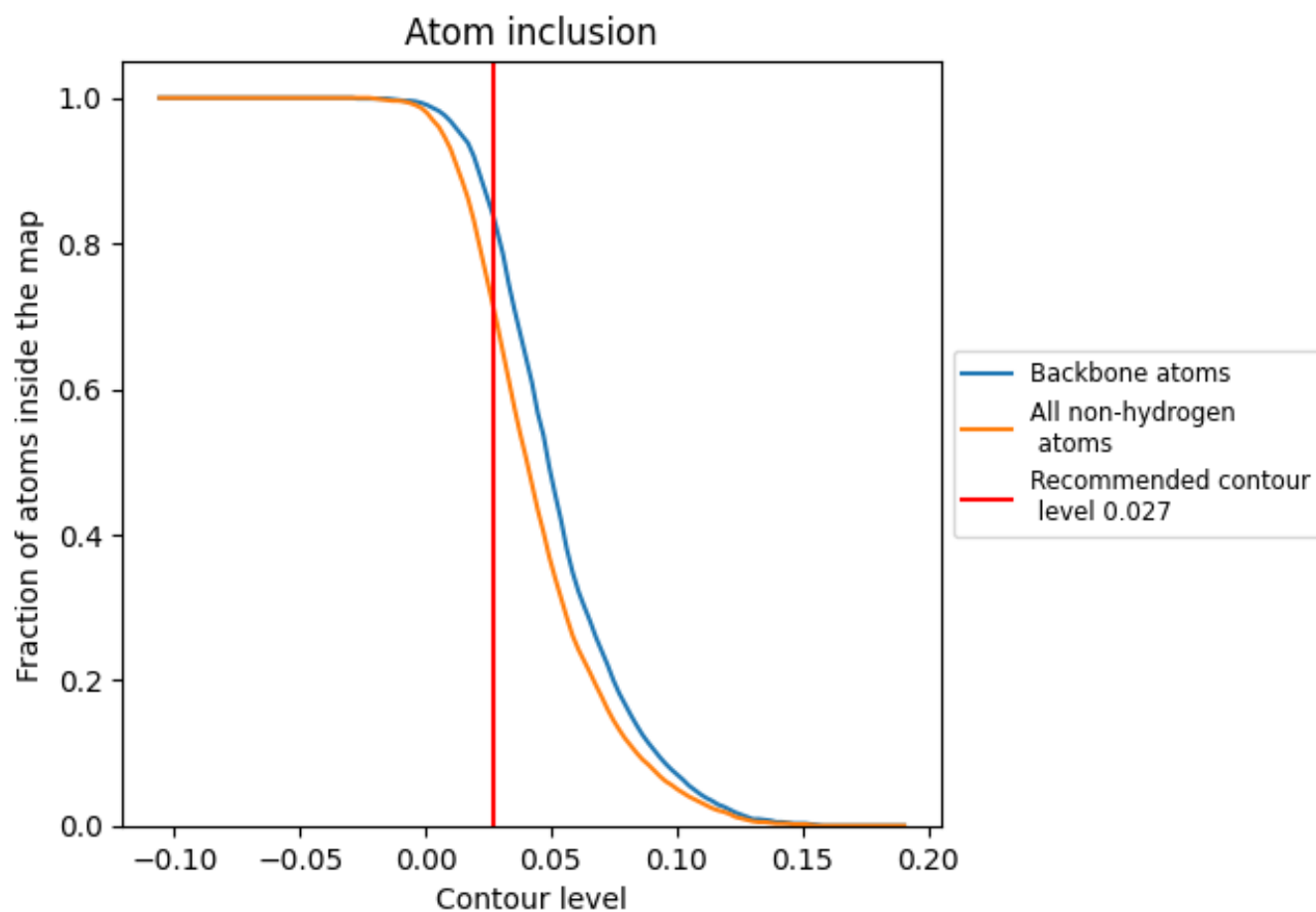
The images above show the model with each residue coloured according to its Q-score. This shows their resolvability in the map with higher Q-score values reflecting better resolvability. Please note: Q-score is calculating the resolvability of atoms, and thus high values are only expected at resolutions at which atoms can be resolved. Low Q-score values may therefore be expected for many entries.

9.3 Atom inclusion mapped to coordinate model [\(i\)](#)



The images above show the model with each residue coloured according to its atom inclusion. This shows to what extent they are inside the map at the recommended contour level (0.027).









9.4 Atom inclusion [i](#)



At the recommended contour level, 84% of all backbone atoms, 71% of all non-hydrogen atoms, are inside the map.

9.5 Map-model fit summary

The table lists the average atom inclusion at the recommended contour level (0.027) and Q-score for the entire model and for each chain.

Chain	Atom inclusion	Q-score
All	 0.7130	 0.4240
A	 0.7150	 0.4260
B	 0.7140	 0.4220
C	 0.7110	 0.4240

