



## Full wwPDB EM Validation Report ⓘ

Nov 19, 2024 – 04:27 PM JST

PDB ID : 8X0L  
EMDB ID : EMD-37981  
Title : Cryo-EM structure of Semliki Forest virus in complex with its receptor  
VLDLR(3-fold)  
Authors : Gao, F.G.; Liu, S.  
Deposited on : 2023-11-04  
Resolution : 3.50 Å(reported)

This is a Full wwPDB EM Validation Report for a publicly released PDB entry.

We welcome your comments at [validation@mail.wwpdb.org](mailto:validation@mail.wwpdb.org)

A user guide is available at

<https://www.wwpdb.org/validation/2017/EMValidationReportHelp>

with specific help available everywhere you see the ⓘ symbol.

The types of validation reports are described at

<http://www.wwpdb.org/validation/2017/FAQs#types>.

---

The following versions of software and data (see [references ⓘ](#)) were used in the production of this report:

EMDB validation analysis : 0.0.1.dev113  
Mogul : 1.8.5 (274361), CSD as541be (2020)  
MolProbity : 4.02b-467  
buster-report : 1.1.7 (2018)  
Percentile statistics : 20231227.v01 (using entries in the PDB archive December 27th 2023)  
MapQ : 1.9.13  
Ideal geometry (proteins) : Engh & Huber (2001)  
Ideal geometry (DNA, RNA) : Parkinson et al. (1996)  
Validation Pipeline (wwPDB-VP) : 2.39

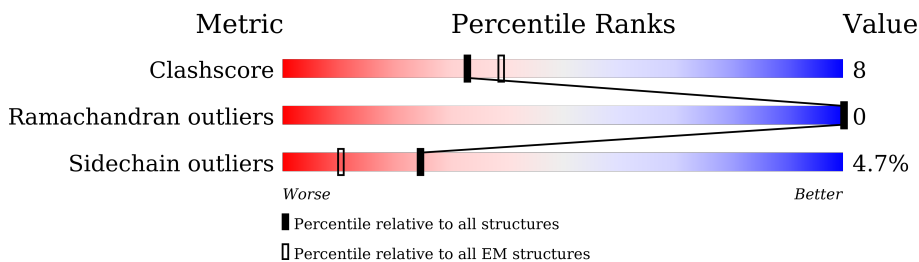
# 1 Overall quality at a glance i

The following experimental techniques were used to determine the structure:

*ELECTRON MICROSCOPY*

The reported resolution of this entry is 3.50 Å.

Percentile scores (ranging between 0-100) for global validation metrics of the entry are shown in the following graphic. The table shows the number of entries on which the scores are based.



Metric	Whole archive (#Entries)	EM structures (#Entries)
Clashscore	210492	15764
Ramachandran outliers	207382	16835
Sidechain outliers	206894	16415

The table below summarises the geometric issues observed across the polymeric chains and their fit to the map. The red, orange, yellow and green segments of the bar indicate the fraction of residues that contain outliers for  $\geq 3$ , 2, 1 and 0 types of geometric quality criteria respectively. A grey segment represents the fraction of residues that are not modelled. The numeric value for each fraction is indicated below the corresponding segment, with a dot representing fractions  $\leq 5\%$ . The upper red bar (where present) indicates the fraction of residues that have poor fit to the EM map (all-atom inclusion  $< 40\%$ ). The numeric value is given above the bar.

Mol	Chain	Length	Quality of chain
1	A	162	<div style="display: flex; align-items: center;"> <div style="width: 9%; height: 10px; background-color: red; margin-right: 5px;"></div> <div style="width: 68%; height: 10px; background-color: green; margin-right: 5px;"></div> <div style="width: 30%; height: 10px; background-color: yellow; margin-right: 5px;"></div> <div style="width: 1%; height: 10px; background-color: grey; margin-right: 5px;"></div> </div> <p style="text-align: center;">9%      68%      30%      •</p>
1	E	162	<div style="display: flex; align-items: center;"> <div style="width: 10%; height: 10px; background-color: red; margin-right: 5px;"></div> <div style="width: 66%; height: 10px; background-color: green; margin-right: 5px;"></div> <div style="width: 32%; height: 10px; background-color: yellow; margin-right: 5px;"></div> <div style="width: 1%; height: 10px; background-color: grey; margin-right: 5px;"></div> </div> <p style="text-align: center;">10%      66%      32%      •</p>
1	I	162	<div style="display: flex; align-items: center;"> <div style="width: 7%; height: 10px; background-color: red; margin-right: 5px;"></div> <div style="width: 68%; height: 10px; background-color: green; margin-right: 5px;"></div> <div style="width: 30%; height: 10px; background-color: yellow; margin-right: 5px;"></div> <div style="width: 1%; height: 10px; background-color: grey; margin-right: 5px;"></div> </div> <p style="text-align: center;">7%      68%      30%      •</p>
2	B	418	<div style="display: flex; align-items: center;"> <div style="width: 1%; height: 10px; background-color: red; margin-right: 5px;"></div> <div style="width: 78%; height: 10px; background-color: green; margin-right: 5px;"></div> <div style="width: 20%; height: 10px; background-color: yellow; margin-right: 5px;"></div> <div style="width: 1%; height: 10px; background-color: grey; margin-right: 5px;"></div> </div> <p style="text-align: center;">•      78%      20%      •</p>
2	F	418	<div style="display: flex; align-items: center;"> <div style="width: 1%; height: 10px; background-color: red; margin-right: 5px;"></div> <div style="width: 80%; height: 10px; background-color: green; margin-right: 5px;"></div> <div style="width: 19%; height: 10px; background-color: yellow; margin-right: 5px;"></div> <div style="width: 1%; height: 10px; background-color: grey; margin-right: 5px;"></div> </div> <p style="text-align: center;">•      80%      19%      •</p>
2	J	418	<div style="display: flex; align-items: center;"> <div style="width: 1%; height: 10px; background-color: red; margin-right: 5px;"></div> <div style="width: 77%; height: 10px; background-color: green; margin-right: 5px;"></div> <div style="width: 22%; height: 10px; background-color: yellow; margin-right: 5px;"></div> <div style="width: 1%; height: 10px; background-color: grey; margin-right: 5px;"></div> </div> <p style="text-align: center;">•      77%      22%      •</p>
3	C	438	<div style="display: flex; align-items: center;"> <div style="width: 82%; height: 10px; background-color: green; margin-right: 5px;"></div> <div style="width: 17%; height: 10px; background-color: yellow; margin-right: 5px;"></div> <div style="width: 1%; height: 10px; background-color: grey; margin-right: 5px;"></div> </div> <p style="text-align: center;">82%      17%      •</p>
3	G	438	<div style="display: flex; align-items: center;"> <div style="width: 80%; height: 10px; background-color: green; margin-right: 5px;"></div> <div style="width: 19%; height: 10px; background-color: yellow; margin-right: 5px;"></div> <div style="width: 1%; height: 10px; background-color: grey; margin-right: 5px;"></div> </div> <p style="text-align: center;">80%      19%      •</p>

*Continued on next page...*

*Continued from previous page...*

Mol	Chain	Length	Quality of chain
3	K	438	 81% 18%
4	D	37	 38% 78% 22%
4	H	37	 41% 89% 11%
4	L	37	 38% 92% 8%
5	M	2	 100%
5	N	2	 50% 50%
5	O	2	 100%
5	P	2	 50% 50%
5	Q	2	 100%
5	R	2	 50% 50%

## 2 Entry composition [i](#)

There are 7 unique types of molecules in this entry. The entry contains 24555 atoms, of which 0 are hydrogens and 0 are deuteriums.

In the tables below, the AltConf column contains the number of residues with at least one atom in alternate conformation and the Trace column contains the number of residues modelled with at most 2 atoms.

- Molecule 1 is a protein called Capsid protein.

Mol	Chain	Residues	Atoms					AltConf	Trace
			Total	C	N	O	S		
1	A	162	Total	C	N	O	S	0	0
			1249	781	227	232	9		
1	E	162	Total	C	N	O	S	0	0
			1249	781	227	232	9		
1	I	162	Total	C	N	O	S	0	0
			1249	781	227	232	9		

- Molecule 2 is a protein called pike glycoprotein E2.

Mol	Chain	Residues	Atoms					AltConf	Trace
			Total	C	N	O	S		
2	B	418	Total	C	N	O	S	0	0
			3256	2056	575	600	25		
2	F	418	Total	C	N	O	S	0	0
			3256	2056	575	600	25		
2	J	418	Total	C	N	O	S	0	0
			3256	2056	575	600	25		

- Molecule 3 is a protein called pike glycoprotein E1.

Mol	Chain	Residues	Atoms					AltConf	Trace
			Total	C	N	O	S		
3	C	438	Total	C	N	O	S	0	0
			3329	2109	559	636	25		
3	G	438	Total	C	N	O	S	0	0
			3329	2109	559	636	25		
3	K	438	Total	C	N	O	S	0	0
			3329	2109	559	636	25		

- Molecule 4 is a protein called Very low-density lipoprotein receptor.

Mol	Chain	Residues	Atoms					AltConf	Trace
			Total	C	N	O	S		
4	H	37	Total	C	N	O	S	0	0
			280	160	51	63	6		

*Continued on next page...*

Continued from previous page...

Mol	Chain	Residues	Atoms					AltConf	Trace
4	D	37	Total	C	N	O	S	0	0
			280	160	51	63	6		
4	L	37	Total	C	N	O	S	0	0
			280	160	51	63	6		

- Molecule 5 is an oligosaccharide called 2-acetamido-2-deoxy-beta-D-glucopyranose-(1-4)-2-acetamido-2-deoxy-beta-D-glucopyranose.



Mol	Chain	Residues	Atoms				AltConf	Trace
5	M	2	Total	C	N	O	0	0
			28	16	2	10		
5	N	2	Total	C	N	O	0	0
			28	16	2	10		
5	O	2	Total	C	N	O	0	0
			28	16	2	10		
5	P	2	Total	C	N	O	0	0
			28	16	2	10		
5	Q	2	Total	C	N	O	0	0
			28	16	2	10		
5	R	2	Total	C	N	O	0	0
			28	16	2	10		

- Molecule 6 is 2-acetamido-2-deoxy-beta-D-glucopyranose (three-letter code: NAG) (formula: C<sub>8</sub>H<sub>15</sub>NO<sub>6</sub>) (labeled as "Ligand of Interest" by depositor).



Mol	Chain	Residues	Atoms				AltConf
			Total	C	N	O	
6	C	1	14	8	1	5	0
6	G	1	14	8	1	5	0
6	K	1	14	8	1	5	0

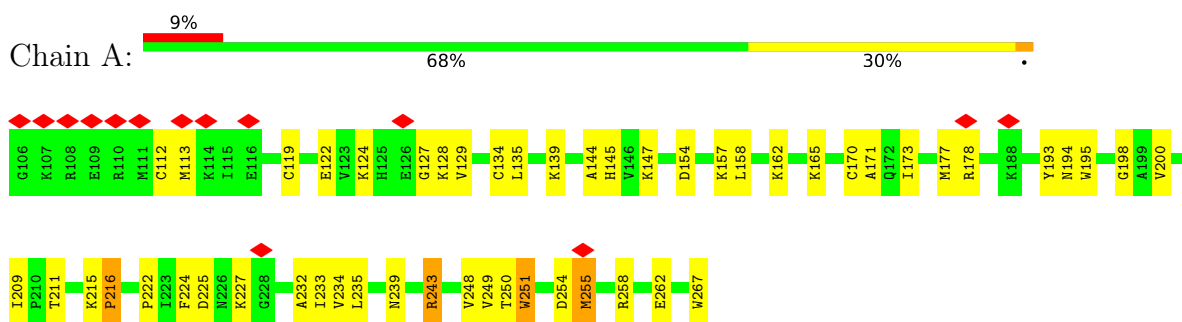
- Molecule 7 is CALCIUM ION (three-letter code: CA) (formula: Ca) (labeled as "Ligand of Interest" by depositor).

Mol	Chain	Residues	Atoms		AltConf
			Total	Ca	
7	H	1	1	1	0
7	D	1	1	1	0
7	L	1	1	1	0

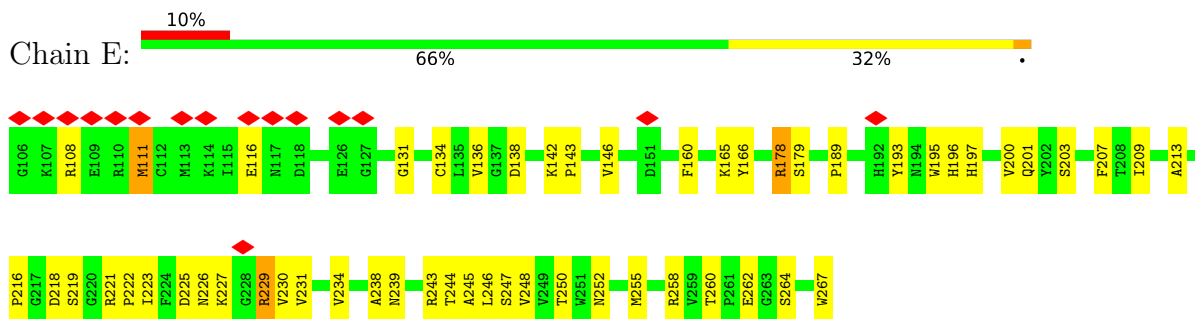
### 3 Residue-property plots

These plots are drawn for all protein, RNA, DNA and oligosaccharide chains in the entry. The first graphic for a chain summarises the proportions of the various outlier classes displayed in the second graphic. The second graphic shows the sequence view annotated by issues in geometry and atom inclusion in map density. Residues are color-coded according to the number of geometric quality criteria for which they contain at least one outlier: green = 0, yellow = 1, orange = 2 and red = 3 or more. A red diamond above a residue indicates a poor fit to the EM map for this residue (all-atom inclusion < 40%). Stretches of 2 or more consecutive residues without any outlier are shown as a green connector. Residues present in the sample, but not in the model, are shown in grey.

- Molecule 1: Capsid protein



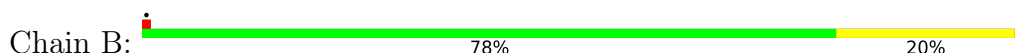
- Molecule 1: Capsid protein

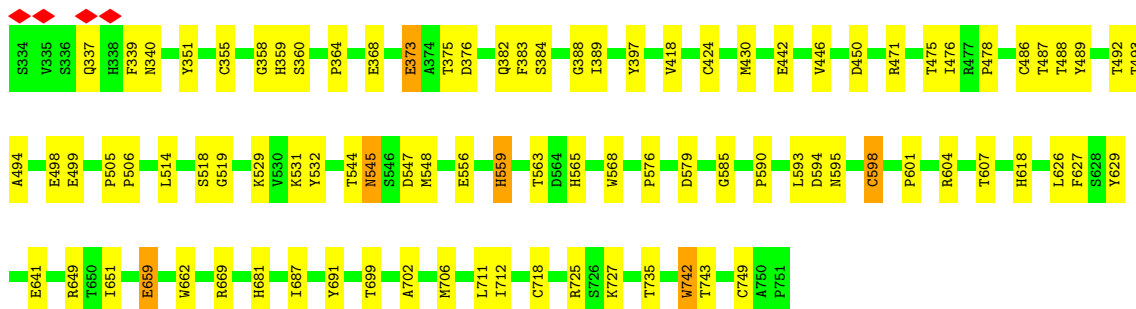


- Molecule 1: Capsid protein

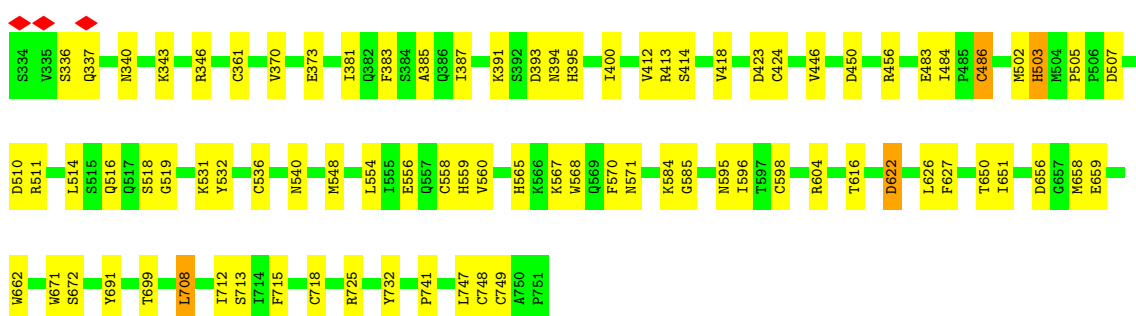
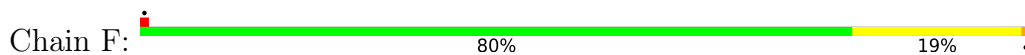


- Molecule 2: pike glycoprotein E2

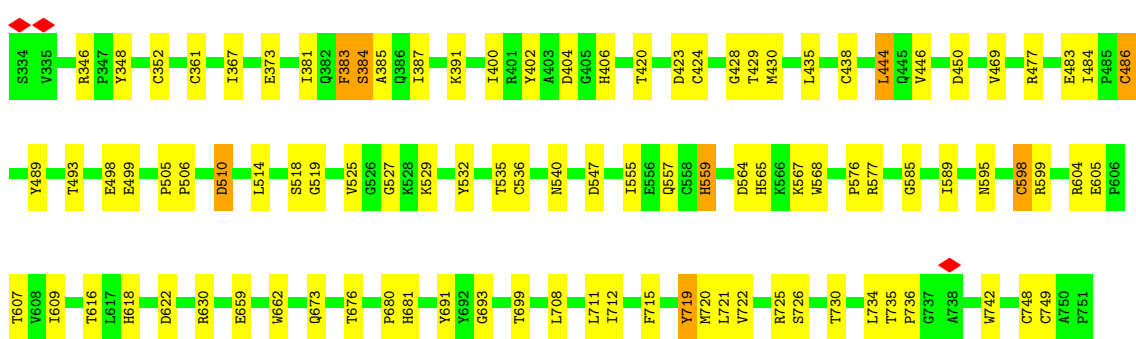
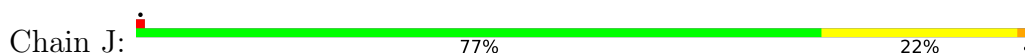




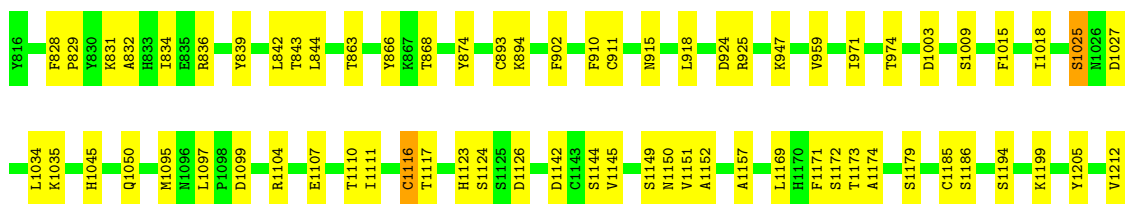
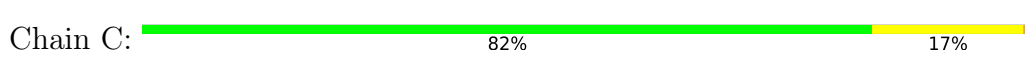
• Molecule 2: pike glycoprotein E2



• Molecule 2: pike glycoprotein E2



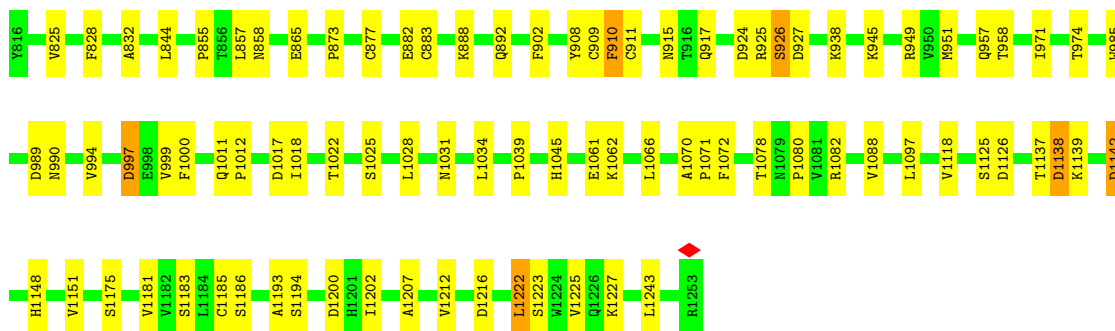
• Molecule 3: pike glycoprotein E1



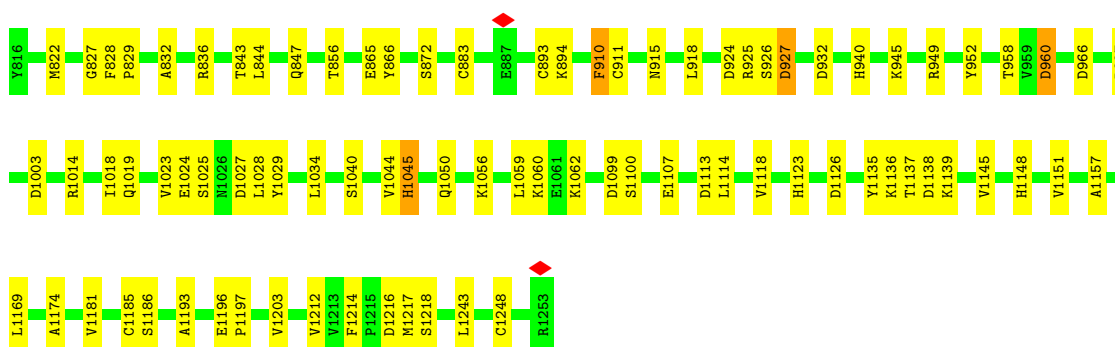
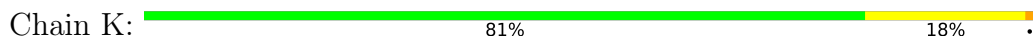




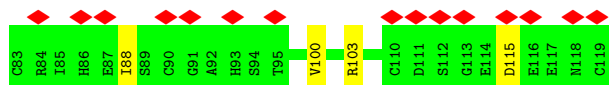
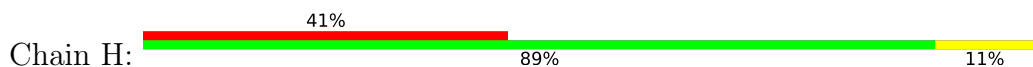
• Molecule 3: pike glycoprotein E1



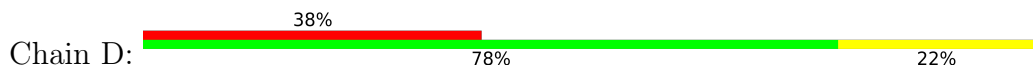
• Molecule 3: pike glycoprotein E1



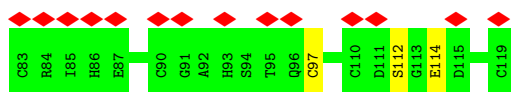
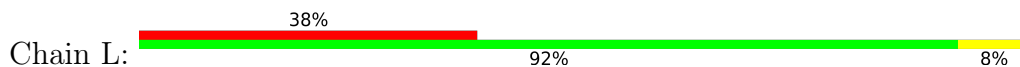
• Molecule 4: Very low-density lipoprotein receptor



• Molecule 4: Very low-density lipoprotein receptor



• Molecule 4: Very low-density lipoprotein receptor



- Molecule 5: 2-acetamido-2-deoxy-beta-D-glucopyranose-(1-4)-2-acetamido-2-deoxy-beta-D-glucopyranose



- Molecule 5: 2-acetamido-2-deoxy-beta-D-glucopyranose-(1-4)-2-acetamido-2-deoxy-beta-D-glucopyranose



- Molecule 5: 2-acetamido-2-deoxy-beta-D-glucopyranose-(1-4)-2-acetamido-2-deoxy-beta-D-glucopyranose



- Molecule 5: 2-acetamido-2-deoxy-beta-D-glucopyranose-(1-4)-2-acetamido-2-deoxy-beta-D-glucopyranose



- Molecule 5: 2-acetamido-2-deoxy-beta-D-glucopyranose-(1-4)-2-acetamido-2-deoxy-beta-D-glucopyranose



- Molecule 5: 2-acetamido-2-deoxy-beta-D-glucopyranose-(1-4)-2-acetamido-2-deoxy-beta-D-glucopyranose





## 4 Experimental information

Property	Value	Source
EM reconstruction method	SINGLE PARTICLE	Depositor
Imposed symmetry	POINT, Not provided	
Number of particles used	563953	Depositor
Resolution determination method	FSC 0.143 CUT-OFF	Depositor
CTF correction method	NONE	Depositor
Microscope	FEI TITAN KRIOS	Depositor
Voltage (kV)	300	Depositor
Electron dose ( $e^-/\text{\AA}^2$ )	1.25	Depositor
Minimum defocus (nm)	1200	Depositor
Maximum defocus (nm)	5000	Depositor
Magnification	Not provided	
Image detector	GATAN K3 BIOQUANTUM (6k x 4k)	Depositor
Maximum map value	2.015	Depositor
Minimum map value	-0.002	Depositor
Average map value	0.007	Depositor
Map value standard deviation	0.063	Depositor
Recommended contour level	0.1	Depositor
Map size ( $\text{\AA}$ )	422.40002, 422.40002, 422.40002	wwPDB
Map dimensions	384, 384, 384	wwPDB
Map angles ( $^\circ$ )	90.0, 90.0, 90.0	wwPDB
Pixel spacing ( $\text{\AA}$ )	1.1, 1.1, 1.1	Depositor

## 5 Model quality i

### 5.1 Standard geometry i

Bond lengths and bond angles in the following residue types are not validated in this section: NAG, CA

The Z score for a bond length (or angle) is the number of standard deviations the observed value is removed from the expected value. A bond length (or angle) with  $|Z| > 5$  is considered an outlier worth inspection. RMSZ is the root-mean-square of all Z scores of the bond lengths (or angles).

Mol	Chain	Bond lengths		Bond angles	
		RMSZ	# Z  >5	RMSZ	# Z  >5
1	A	0.29	0/1277	0.63	1/1719 (0.1%)
1	E	0.26	0/1277	0.57	0/1719
1	I	0.28	0/1277	0.62	1/1719 (0.1%)
2	B	0.27	0/3349	0.55	0/4569
2	F	0.26	0/3349	0.52	0/4569
2	J	0.26	0/3349	0.55	2/4569 (0.0%)
3	C	0.27	0/3415	0.51	1/4660 (0.0%)
3	G	0.27	0/3415	0.54	0/4660
3	K	0.27	0/3415	0.51	0/4660
4	D	0.22	0/284	0.48	0/383
4	H	0.22	0/284	0.48	0/383
4	L	0.21	0/284	0.47	0/383
All	All	0.27	0/24975	0.54	5/33993 (0.0%)

Chiral center outliers are detected by calculating the chiral volume of a chiral center and verifying if the center is modelled as a planar moiety or with the opposite hand. A planarity outlier is detected by checking planarity of atoms in a peptide group, atoms in a mainchain group or atoms of a sidechain that are expected to be planar.

Mol	Chain	#Chirality outliers	#Planarity outliers
2	B	0	1

There are no bond length outliers.

All (5) bond angle outliers are listed below:

Mol	Chain	Res	Type	Atoms	Z	Observed(°)	Ideal(°)
1	A	216	PRO	CA-N-CD	-10.72	96.49	111.50
1	I	143	PRO	CA-N-CD	-7.50	101.00	111.50
2	J	598	CYS	CA-CB-SG	5.60	124.08	114.00
3	C	1003	ASP	CB-CG-OD2	5.46	123.22	118.30

*Continued on next page...*

Continued from previous page...

Mol	Chain	Res	Type	Atoms	Z	Observed(°)	Ideal(°)
2	J	486	CYS	CA-CB-SG	5.21	123.37	114.00

There are no chirality outliers.

All (1) planarity outliers are listed below:

Mol	Chain	Res	Type	Group
2	B	598	CYS	Peptide

## 5.2 Too-close contacts [i](#)

In the following table, the Non-H and H(model) columns list the number of non-hydrogen atoms and hydrogen atoms in the chain respectively. The H(added) column lists the number of hydrogen atoms added and optimized by MolProbity. The Clashes column lists the number of clashes within the asymmetric unit, whereas Symm-Clashes lists symmetry-related clashes.

Mol	Chain	Non-H	H(model)	H(added)	Clashes	Symm-Clashes
1	A	1249	0	1232	28	0
1	E	1249	0	1232	34	0
1	I	1249	0	1232	40	0
2	B	3256	0	3165	55	0
2	F	3256	0	3165	46	0
2	J	3256	0	3165	58	0
3	C	3329	0	3242	46	0
3	G	3329	0	3242	50	0
3	K	3329	0	3242	46	0
4	D	280	0	229	4	0
4	H	280	0	229	2	0
4	L	280	0	229	1	0
5	M	28	0	25	0	0
5	N	28	0	25	1	0
5	O	28	0	25	0	0
5	P	28	0	25	2	0
5	Q	28	0	25	0	0
5	R	28	0	25	0	0
6	C	14	0	13	0	0
6	G	14	0	13	1	0
6	K	14	0	13	0	0
7	D	1	0	0	0	0
7	H	1	0	0	0	0
7	L	1	0	0	0	0
All	All	24555	0	23793	394	0

The all-atom clashscore is defined as the number of clashes found per 1000 atoms (including hydrogen atoms). The all-atom clashscore for this structure is 8.

All (394) close contacts within the same asymmetric unit are listed below, sorted by their clash magnitude.

Atom-1	Atom-2	Interatomic distance (Å)	Clash overlap (Å)
2:B:545:ASN:O	2:B:545:ASN:ND2	2.09	0.85
3:G:989:ASP:OD1	3:G:990:ASN:N	2.11	0.83
2:J:514:LEU:HB3	2:J:555:ILE:HD11	1.61	0.81
3:C:1145:VAL:HG21	3:C:1169:LEU:HD21	1.68	0.76
1:I:168:LEU:HD21	2:J:734:LEU:HD13	1.69	0.75
1:A:216:PRO:HD2	1:A:216:PRO:O	1.85	0.74
2:J:406:HIS:NE2	2:J:510:ASP:OD2	2.18	0.74
1:I:134:CYS:SG	1:I:135:LEU:N	2.60	0.74
3:K:1151:VAL:HA	3:K:1212:VAL:HG21	1.69	0.73
3:K:1216:ASP:OD1	3:K:1217:MET:N	2.21	0.72
2:J:720:MET:HG3	3:K:1243:LEU:HD12	1.72	0.72
2:J:505:PRO:HG2	2:J:565:HIS:HB3	1.71	0.72
1:I:185:THR:HB	1:I:229:ARG:HD3	1.70	0.71
3:K:865:GLU:OE2	3:K:1056:LYS:NZ	2.24	0.70
2:B:505:PRO:HG2	2:B:565:HIS:HB3	1.74	0.69
1:E:247:SER:HB2	1:E:260:THR:HG22	1.74	0.69
3:C:868:THR:HG21	3:C:1050:GLN:HE22	1.57	0.68
2:F:559:HIS:HB2	3:G:910:PHE:HE1	1.58	0.68
3:C:1216:ASP:OD1	3:C:1217:MET:N	2.27	0.68
2:J:346:ARG:HD3	2:J:567:LYS:HB2	1.76	0.68
3:K:844:LEU:HD23	3:K:952:TYR:HB3	1.75	0.68
1:I:238:ALA:HB2	1:I:264:SER:HA	1.77	0.67
3:C:924:ASP:OD1	3:C:925:ARG:N	2.28	0.67
3:G:957:GLN:HB2	3:G:971:ILE:HD11	1.77	0.67
1:I:142:LYS:NZ	1:I:146:VAL:O	2.28	0.66
2:J:373:GLU:OE1	2:J:489:TYR:OH	2.12	0.66
3:G:1151:VAL:HA	3:G:1212:VAL:HG21	1.77	0.66
3:G:1018:ILE:HG13	3:G:1028:LEU:HD11	1.77	0.66
2:J:604:ARG:O	2:J:662:TRP:NE1	2.27	0.66
2:B:702:ALA:O	2:B:706:MET:HG3	1.95	0.66
2:B:373:GLU:OE1	2:B:489:TYR:OH	2.13	0.65
3:G:882:GLU:N	3:G:882:GLU:OE1	2.29	0.65
3:K:1025:SER:OG	3:K:1027:ASP:OD1	2.14	0.65
1:E:195:TRP:CD1	1:E:196:HIS:N	2.64	0.65
2:B:375:THR:HG22	2:B:487:THR:H	1.62	0.65
2:B:518:SER:OG	2:B:519:GLY:N	2.31	0.64
1:E:189:PRO:O	1:E:193:TYR:OH	2.16	0.64

*Continued on next page...*

*Continued from previous page...*

Atom-1	Atom-2	Interatomic distance (Å)	Clash overlap (Å)
1:E:234:VAL:HA	1:E:248:VAL:HG12	1.78	0.64
3:G:911:CYS:O	3:G:915:ASN:ND2	2.31	0.64
1:E:195:TRP:HD1	1:E:196:HIS:H	1.45	0.63
2:J:518:SER:OG	2:J:519:GLY:N	2.32	0.63
3:K:1145:VAL:HG21	3:K:1169:LEU:HD11	1.80	0.63
1:A:235:LEU:HD11	1:A:249:VAL:HG13	1.79	0.63
2:J:725:ARG:NH2	2:J:749:CYS:O	2.32	0.63
3:G:994:VAL:HG22	3:G:999:VAL:HG12	1.79	0.62
3:K:1118:VAL:HG11	3:K:1193:ALA:HB2	1.80	0.62
2:F:518:SER:OG	2:F:519:GLY:N	2.31	0.62
2:B:727:LYS:HZ1	3:C:1247:THR:HA	1.65	0.62
3:C:1035:LYS:NZ	2:J:605:GLU:OE2	2.33	0.61
3:K:1148:HIS:HB2	3:K:1181:VAL:HG13	1.80	0.61
3:C:834:ILE:HD11	3:C:842:LEU:HD23	1.81	0.61
3:K:836:ARG:NH1	3:K:1099:ASP:OD2	2.32	0.61
3:C:844:LEU:HD21	3:C:1095:MET:HE1	1.83	0.60
3:G:924:ASP:OD1	3:G:925:ARG:N	2.34	0.60
3:G:1148:HIS:HB2	3:G:1181:VAL:HG13	1.83	0.60
3:K:1113:ASP:OD2	3:K:1136:LYS:NZ	2.33	0.60
2:F:346:ARG:HD3	2:F:567:LYS:HB2	1.82	0.60
1:E:225:ASP:OD1	1:E:229:ARG:N	2.35	0.60
2:B:594:ASP:OD1	2:B:595:ASN:N	2.35	0.59
3:C:1025:SER:OG	3:C:1027:ASP:OD1	2.19	0.59
3:K:866:TYR:HB3	3:K:1018:ILE:HD13	1.85	0.59
4:D:112:SER:OG	4:D:114:GLU:OE2	2.21	0.59
1:E:238:ALA:O	1:E:245:ALA:N	2.34	0.58
3:K:927:ASP:OD1	3:K:927:ASP:N	2.35	0.58
2:F:510:ASP:OD2	2:F:511:ARG:N	2.36	0.58
1:E:239:ASN:HA	1:E:244:THR:HA	1.86	0.58
2:F:418:VAL:HG12	2:F:446:VAL:HG22	1.84	0.58
2:F:486:CYS:SG	2:F:598:CYS:N	2.76	0.58
3:G:832:ALA:HB3	3:G:844:LEU:HB2	1.83	0.58
2:F:559:HIS:HB2	3:G:910:PHE:CE1	2.38	0.58
1:A:124:LYS:HE2	1:A:127:GLY:HA2	1.84	0.58
2:J:576:PRO:HD3	3:K:1044:VAL:HG11	1.85	0.58
1:A:194:ASN:OD1	1:A:195:TRP:N	2.37	0.58
1:I:139:LYS:HE2	2:J:736:PRO:HA	1.86	0.58
2:B:442:GLU:OE1	2:B:442:GLU:N	2.37	0.57
3:C:911:CYS:O	3:C:915:ASN:ND2	2.37	0.57
2:J:367:ILE:HD11	2:J:446:VAL:HG11	1.86	0.57
3:G:1142:ASP:OD2	3:G:1142:ASP:N	2.37	0.57

*Continued on next page...*



*Continued from previous page...*

Atom-1	Atom-2	Interatomic distance (Å)	Clash overlap (Å)
1:E:238:ALA:HB2	1:E:264:SER:HA	1.86	0.57
3:C:832:ALA:HB3	3:C:844:LEU:HB3	1.86	0.57
2:B:545:ASN:HD22	2:B:545:ASN:C	2.01	0.57
2:J:708:LEU:O	2:J:712:ILE:HG22	2.05	0.57
2:B:604:ARG:O	2:B:662:TRP:NE1	2.35	0.57
3:C:1034:LEU:HD13	3:C:1050:GLN:HE21	1.70	0.57
1:A:234:VAL:HA	1:A:248:VAL:HG12	1.87	0.56
1:I:193:TYR:HB2	1:I:200:VAL:HG23	1.87	0.56
3:K:1059:LEU:O	3:K:1062:LYS:NZ	2.37	0.56
1:I:143:PRO:HD2	1:I:143:PRO:O	2.04	0.56
2:B:556:GLU:N	2:B:556:GLU:OE1	2.38	0.56
2:B:659:GLU:OE1	2:B:669:ARG:NH1	2.39	0.56
2:B:529:LYS:HG2	2:B:563:THR:HB	1.88	0.56
3:C:1009:SER:O	3:C:1009:SER:OG	2.22	0.56
2:F:627:PHE:HZ	2:F:651:ILE:HD11	1.70	0.56
1:A:193:TYR:HD2	1:A:225:ASP:HA	1.71	0.55
2:F:418:VAL:HG23	2:F:424:CYS:HB2	1.88	0.55
1:I:189:PRO:O	1:I:193:TYR:OH	2.22	0.55
3:C:1142:ASP:OD1	3:C:1142:ASP:N	2.39	0.55
2:B:418:VAL:O	2:B:424:CYS:HB2	2.07	0.55
2:B:351:TYR:HE2	2:B:360:SER:HB2	1.71	0.55
3:K:883:CYS:HB3	3:K:918:LEU:HD11	1.88	0.55
3:K:1138:ASP:OD2	3:K:1139:LYS:N	2.40	0.55
2:B:727:LYS:NZ	3:C:1247:THR:HA	2.21	0.55
3:K:856:THR:HG23	3:K:940:HIS:HB2	1.89	0.54
2:B:532:TYR:HE2	2:B:544:THR:HG23	1.72	0.54
1:A:262:GLU:H	1:A:262:GLU:CD	2.11	0.54
2:J:387:ILE:HG21	2:J:429:THR:OG1	2.07	0.54
2:F:595:ASN:HB3	5:P:1:NAG:HN2	1.73	0.54
3:G:892:GLN:NE2	3:G:1034:LEU:O	2.41	0.54
3:G:949:ARG:HB2	3:G:958:THR:HG22	1.90	0.53
3:C:1151:VAL:HG22	3:C:1212:VAL:HG11	1.91	0.53
1:I:142:LYS:NZ	1:I:146:VAL:HG13	2.24	0.53
3:K:1018:ILE:HB	3:K:1028:LEU:HD21	1.89	0.53
2:J:525:VAL:HG22	2:J:527:GLY:H	1.74	0.53
2:B:368:GLU:HB2	2:B:382:GLN:HG2	1.91	0.53
1:I:165:LYS:HG3	1:I:166:TYR:CD2	2.44	0.53
3:C:828:PHE:HD2	3:C:829:PRO:HD2	1.74	0.52
1:I:261:PRO:O	1:I:264:SER:OG	2.23	0.52
2:J:498:GLU:HG3	2:J:589:ILE:HD11	1.92	0.52
3:C:839:TYR:OH	3:C:1104:ARG:NH1	2.43	0.52

*Continued on next page...*

*Continued from previous page...*

Atom-1	Atom-2	Interatomic distance (Å)	Clash overlap (Å)
3:K:960:ASP:OD2	3:K:960:ASP:N	2.36	0.52
3:G:1080:PRO:HD2	3:G:1082:ARG:HH11	1.75	0.51
2:J:469:VAL:HG11	2:J:486:CYS:HB2	1.91	0.51
3:K:1023:VAL:HG13	3:K:1024:GLU:HG2	1.91	0.51
1:E:193:TYR:HD2	1:E:225:ASP:HA	1.76	0.51
2:F:604:ARG:O	2:F:662:TRP:NE1	2.44	0.51
3:G:1118:VAL:HG21	3:G:1193:ALA:HB2	1.92	0.51
3:G:1022:THR:HG22	3:G:1025:SER:HB2	1.92	0.51
3:K:1040:SER:H	3:K:1045:HIS:HE1	1.58	0.51
2:J:381:ILE:HD11	2:J:444:LEU:HD11	1.91	0.51
4:L:112:SER:OG	4:L:114:GLU:OE2	2.28	0.51
2:B:725:ARG:NH1	2:B:749:CYS:O	2.43	0.51
2:F:505:PRO:HG2	2:F:565:HIS:HB3	1.92	0.51
2:F:595:ASN:HB3	5:P:1:NAG:N2	2.26	0.51
1:I:200:VAL:HG12	1:I:209:ILE:HD11	1.93	0.51
3:G:1137:THR:OG1	3:G:1138:ASP:N	2.43	0.50
1:I:242:SER:OG	1:I:243:ARG:NH2	2.44	0.50
1:A:193:TYR:N	1:A:200:VAL:O	2.39	0.50
1:A:195:TRP:HB3	1:A:198:GLY:O	2.12	0.50
1:I:124:LYS:NZ	1:I:127:GLY:H	2.09	0.50
1:I:139:LYS:HB3	1:I:171:ALA:O	2.11	0.50
2:B:492:THR:HG22	2:B:494:ALA:H	1.76	0.50
1:I:135:LEU:O	1:I:182:SER:OG	2.28	0.50
3:K:1034:LEU:HD12	3:K:1050:GLN:HB2	1.94	0.50
1:E:195:TRP:HZ3	1:E:209:ILE:HD12	1.77	0.49
2:F:691:TYR:HB3	2:F:699:THR:HG21	1.94	0.49
3:G:945:LYS:NZ	3:G:945:LYS:HB3	2.28	0.49
2:F:343:LYS:HG3	2:F:393:ASP:OD1	2.12	0.49
2:J:719:TYR:O	2:J:722:VAL:HG12	2.12	0.49
1:A:145:HIS:NE2	1:A:267:TRP:O	2.35	0.49
2:J:559:HIS:HB3	3:K:910:PHE:CE1	2.47	0.49
2:F:536:CYS:O	2:F:540:ASN:ND2	2.45	0.49
3:C:1245:VAL:O	3:C:1249:ILE:HG22	2.12	0.49
2:F:568:TRP:CH2	2:F:585:GLY:HA3	2.47	0.49
1:I:209:ILE:O	1:I:244:THR:N	2.43	0.49
1:E:131:GLY:HA3	1:E:146:VAL:HG21	1.95	0.49
2:F:531:LYS:O	2:F:560:VAL:HA	2.13	0.49
1:I:142:LYS:HD2	1:I:143:PRO:CD	2.43	0.49
2:J:420:THR:HG22	2:J:444:LEU:HA	1.94	0.48
3:K:832:ALA:HB3	3:K:844:LEU:HB2	1.95	0.48
2:B:430:MET:HE3	2:B:590:PRO:HG3	1.95	0.48

*Continued on next page...*

*Continued from previous page...*

Atom-1	Atom-2	Interatomic distance (Å)	Clash overlap (Å)
2:B:568:TRP:CH2	2:B:585:GLY:HA3	2.48	0.48
1:A:144:ALA:HB1	1:A:162:LYS:HE2	1.95	0.48
2:F:548:MET:SD	2:F:548:MET:N	2.86	0.48
3:K:1137:THR:OG1	3:K:1138:ASP:N	2.45	0.48
2:B:388:GLY:C	2:B:389:ILE:HD13	2.34	0.48
1:I:143:PRO:HA	1:I:168:LEU:HA	1.95	0.48
2:B:595:ASN:HB2	5:N:1:NAG:N2	2.29	0.48
3:G:1125:SER:HB3	3:G:1207:ALA:HA	1.94	0.48
1:A:200:VAL:HG12	1:A:209:ILE:HG22	1.96	0.48
3:G:927:ASP:OD1	3:G:927:ASP:N	2.45	0.48
2:J:430:MET:HG2	2:J:493:THR:HG23	1.95	0.48
2:J:348:TYR:O	2:J:384:SER:OG	2.27	0.48
1:E:250:THR:HG23	1:E:252:ASN:H	1.79	0.48
3:G:1017:ASP:OD2	3:G:1018:ILE:HG22	2.14	0.48
2:B:548:MET:SD	2:B:548:MET:N	2.87	0.47
2:B:627:PHE:HZ	2:B:651:ILE:HD11	1.79	0.47
2:B:687:ILE:H	2:B:687:ILE:HD12	1.79	0.47
3:C:829:PRO:HB2	3:C:831:LYS:HZ1	1.79	0.47
1:E:227:LYS:HB2	1:E:229:ARG:HD3	1.95	0.47
3:G:917:GLN:OE1	3:G:1039:PRO:HG3	2.13	0.47
3:C:974:THR:HG23	3:C:1097:LEU:HA	1.95	0.47
2:F:747:LEU:HD23	2:F:748:CYS:SG	2.54	0.47
3:G:865:GLU:O	3:G:926:SER:HB3	2.14	0.47
3:C:843:THR:HG21	3:C:1157:ALA:HB1	1.96	0.47
1:E:255:MET:SD	1:E:255:MET:N	2.86	0.47
2:F:708:LEU:O	2:F:712:ILE:HG22	2.14	0.47
1:E:262:GLU:N	1:E:262:GLU:OE1	2.46	0.47
2:F:531:LYS:NZ	2:F:531:LYS:HB3	2.29	0.47
3:G:855:PRO:HG2	3:G:857:LEU:HD21	1.96	0.47
2:J:725:ARG:HH22	2:J:749:CYS:C	2.17	0.47
1:A:154:ASP:OD1	1:A:154:ASP:N	2.41	0.47
2:J:428:GLY:O	2:J:435:LEU:HB2	2.14	0.47
2:J:680:PRO:O	2:J:681:HIS:ND1	2.48	0.47
2:B:337:GLN:NE2	2:B:340:ASN:OD1	2.47	0.47
2:F:507:ASP:OD1	2:F:507:ASP:N	2.46	0.47
2:F:658:MET:HG2	2:F:659:GLU:N	2.30	0.47
3:G:1223:SER:O	3:G:1227:LYS:HG3	2.13	0.47
1:I:241:GLY:HA3	1:I:243:ARG:HH12	1.79	0.47
2:F:570:PHE:CD1	2:F:571:ASN:N	2.83	0.47
3:G:1066:LEU:HD23	3:G:1070:ALA:HB2	1.95	0.47
4:D:115:ASP:OD1	4:D:116:GLU:N	2.48	0.47

*Continued on next page...*

*Continued from previous page...*

Atom-1	Atom-2	Interatomic distance (Å)	Clash overlap (Å)
2:B:358:GLY:O	2:B:359:HIS:ND1	2.45	0.46
3:C:1239:ALA:O	3:C:1242:VAL:HG12	2.15	0.46
1:E:216:PRO:HA	1:E:267:TRP:CD1	2.50	0.46
3:G:1012:PRO:HD3	3:G:1031:ASN:OD1	2.15	0.46
4:H:88:ILE:HD11	4:H:100:VAL:HG22	1.97	0.46
4:D:89:SER:HA	4:D:97:CYS:HA	1.97	0.46
2:J:680:PRO:HG3	3:K:1197:PRO:HD2	1.98	0.46
2:B:607:THR:HB	2:B:618:HIS:HB2	1.97	0.46
1:E:193:TYR:N	1:E:200:VAL:O	2.38	0.46
2:F:394:ASN:OD1	2:F:395:HIS:N	2.49	0.46
3:G:985:TRP:HZ2	3:G:1071:PRO:HG2	1.79	0.46
1:E:201:GLN:HE22	1:E:243:ARG:HH22	1.63	0.46
1:A:232:ALA:C	1:A:233:ILE:HD12	2.35	0.46
2:F:336:SER:HA	2:F:395:HIS:CD2	2.51	0.46
2:F:370:VAL:HG22	2:F:381:ILE:HG23	1.97	0.46
3:C:1152:ALA:HB1	3:C:1171:PHE:HD2	1.81	0.46
3:G:951:MET:SD	6:G:1701:NAG:H82	2.56	0.46
2:B:475:THR:O	2:B:476:ILE:HD13	2.15	0.46
2:B:681:HIS:NE2	3:C:1194:SER:HB2	2.30	0.46
3:C:947:LYS:HB2	3:C:947:LYS:HE3	1.72	0.46
2:F:616:THR:HG22	2:F:650:THR:HG22	1.97	0.46
1:I:255:MET:HA	1:I:255:MET:CE	2.46	0.46
2:B:478:PRO:HG3	2:B:601:PRO:HB3	1.98	0.46
1:E:108:ARG:HA	1:E:111:MET:HG3	1.98	0.46
1:E:223:ILE:HD11	1:E:231:VAL:HB	1.98	0.46
1:E:226:ASN:HB2	1:E:227:LYS:NZ	2.29	0.46
2:J:568:TRP:CH2	2:J:585:GLY:HA3	2.51	0.46
2:J:577:ARG:HB2	3:K:872:SER:HB2	1.97	0.46
1:A:250:THR:OG1	1:A:251:TRP:N	2.49	0.45
2:F:516:GLN:HE22	2:F:554:LEU:HD12	1.80	0.45
3:G:877:CYS:HB3	3:G:909:CYS:HB3	1.47	0.45
3:K:997:ASP:OD1	3:K:997:ASP:N	2.47	0.45
3:K:1196:GLU:N	3:K:1196:GLU:OE1	2.49	0.45
2:J:536:CYS:O	2:J:540:ASN:ND2	2.50	0.45
1:A:255:MET:CE	1:A:255:MET:H	2.29	0.45
1:E:201:GLN:NE2	1:E:243:ARG:HH12	2.14	0.45
1:E:209:ILE:HG22	1:E:244:THR:O	2.16	0.45
2:F:450:ASP:OD2	2:F:456:ARG:NH1	2.50	0.45
3:C:959:VAL:HG21	3:C:971:ILE:HD11	1.99	0.45
3:G:1061:GLU:OE1	3:G:1061:GLU:N	2.49	0.45
1:I:193:TYR:HB3	1:I:224:PHE:O	2.17	0.45

*Continued on next page...*

*Continued from previous page...*

Atom-1	Atom-2	Interatomic distance (Å)	Clash overlap (Å)
2:J:604:ARG:NH1	2:J:622:ASP:OD1	2.42	0.45
2:F:483:GLU:C	2:F:484:ILE:HD13	2.37	0.45
3:C:1185:CYS:HB3	3:C:1186:SER:H	1.57	0.45
1:E:207:PHE:HB2	1:E:246:LEU:HB2	1.98	0.45
1:I:142:LYS:HZ3	1:I:146:VAL:HG13	1.80	0.45
1:I:256:VAL:HG23	2:J:735:THR:OG1	2.16	0.45
2:J:725:ARG:NH1	2:J:748:CYS:HB3	2.32	0.45
2:B:529:LYS:NZ	2:B:544:THR:O	2.50	0.45
1:I:209:ILE:N	1:I:244:THR:O	2.47	0.45
2:J:711:LEU:HD23	2:J:711:LEU:HA	1.83	0.45
1:A:173:ILE:HD11	1:A:178:ARG:HD2	1.98	0.44
2:F:568:TRP:CZ2	2:F:584:LYS:HG3	2.53	0.44
1:I:158:LEU:HD11	1:I:171:ALA:HB1	1.97	0.44
2:J:535:THR:HG23	2:J:557:GLN:HE21	1.82	0.44
2:J:691:TYR:C	2:J:699:THR:HG21	2.38	0.44
3:G:908:TYR:HD1	3:G:909:CYS:SG	2.40	0.44
1:I:150:ILE:HD13	1:I:150:ILE:HA	1.89	0.44
2:J:387:ILE:HD13	2:J:400:ILE:HG23	1.99	0.44
2:B:471:ARG:NH2	2:B:626:LEU:HD23	2.33	0.44
2:J:609:ILE:HB	2:J:616:THR:HG23	2.00	0.44
3:K:1019:GLN:HG3	3:K:1029:TYR:HD1	1.83	0.44
3:K:1040:SER:H	3:K:1045:HIS:CE1	2.35	0.44
2:B:641:GLU:OE1	2:B:649:ARG:NH2	2.49	0.44
2:J:673:GLN:NE2	3:K:1203:VAL:HG11	2.33	0.44
3:K:911:CYS:O	3:K:915:ASN:ND2	2.39	0.44
3:C:829:PRO:HB2	3:C:831:LYS:NZ	2.32	0.44
1:A:254:ASP:O	2:B:735:THR:OG1	2.22	0.44
3:G:877:CYS:HA	3:G:915:ASN:OD1	2.17	0.44
1:I:162:LYS:HD3	1:I:163:SER:N	2.32	0.44
2:J:726:SER:O	2:J:730:THR:HB	2.18	0.44
1:I:123:VAL:HG12	1:I:131:GLY:O	2.18	0.44
1:I:230:VAL:HG22	1:I:251:TRP:HH2	1.83	0.44
1:I:234:VAL:HA	1:I:248:VAL:HG12	2.00	0.44
2:B:339:PHE:CD1	2:B:389:ILE:HD11	2.52	0.43
3:C:1199:LYS:HD3	3:C:1199:LYS:HA	1.69	0.43
2:J:676:THR:OG1	2:J:693:GLY:HA3	2.18	0.43
3:C:1149:SER:OG	3:C:1150:ASN:N	2.51	0.43
2:J:486:CYS:HB3	2:J:598:CYS:HB3	1.34	0.43
3:K:827:GLY:HA2	3:K:847:GLN:HE21	1.83	0.43
3:K:949:ARG:HD3	3:K:958:THR:HG22	1.99	0.43
1:A:122:GLU:HB2	1:A:129:VAL:HG23	2.00	0.43

*Continued on next page...*

Continued from previous page...

Atom-1	Atom-2	Interatomic distance (Å)	Clash overlap (Å)
1:E:136:VAL:HG22	1:E:230:VAL:HG11	1.99	0.43
1:E:178:ARG:HG3	1:E:179:SER:N	2.34	0.43
2:F:656:ASP:O	2:F:671:TRP:NE1	2.51	0.43
1:A:128:LYS:HB2	1:A:128:LYS:HE2	1.78	0.43
2:B:418:VAL:HG12	2:B:446:VAL:HG22	1.99	0.43
1:E:209:ILE:HD11	1:E:213:ALA:HB3	2.01	0.43
3:G:1080:PRO:HD2	3:G:1082:ARG:NH1	2.32	0.43
1:I:142:LYS:HD2	1:I:143:PRO:HD2	2.01	0.43
3:G:873:PRO:HB2	3:G:917:GLN:HE21	1.84	0.43
3:G:974:THR:HG23	3:G:1097:LEU:HA	2.00	0.43
1:A:215:LYS:HB2	1:A:216:PRO:HD3	2.01	0.43
1:A:222:PRO:HB2	1:A:224:PHE:HE2	1.83	0.43
1:E:193:TYR:CD2	1:E:225:ASP:HA	2.54	0.43
2:F:412:VAL:HG22	2:F:414:SER:H	1.83	0.43
3:G:938:LYS:HE2	3:G:938:LYS:HB2	1.71	0.43
1:I:138:ASP:OD1	1:I:138:ASP:N	2.51	0.43
2:B:418:VAL:HG23	2:B:424:CYS:HB2	2.01	0.43
2:F:502:MET:C	2:F:503:HIS:HD1	2.21	0.43
3:K:843:THR:HG21	3:K:1157:ALA:HB1	1.99	0.43
1:E:142:LYS:HD2	1:E:142:LYS:C	2.40	0.43
1:A:249:VAL:HG12	1:A:258:ARG:HG3	2.00	0.42
2:B:711:LEU:HD23	2:B:711:LEU:HA	1.86	0.42
3:C:1151:VAL:HA	3:C:1212:VAL:HG11	2.01	0.42
2:F:626:LEU:HD12	2:F:627:PHE:N	2.34	0.42
1:I:138:ASP:O	1:I:173:ILE:HG12	2.18	0.42
2:J:424:CYS:HB2	2:J:438:CYS:HA	2.00	0.42
3:K:1169:LEU:HD23	3:K:1169:LEU:HA	1.93	0.42
2:B:475:THR:C	2:B:476:ILE:HD13	2.39	0.42
3:C:1126:ASP:OD1	3:C:1126:ASP:N	2.50	0.42
3:G:1222:LEU:O	3:G:1225:VAL:HG12	2.19	0.42
3:G:1243:LEU:HD12	3:G:1243:LEU:O	2.19	0.42
2:J:383:PHE:CE2	2:J:385:ALA:HB3	2.55	0.42
3:K:1123:HIS:HB2	3:K:1174:ALA:HA	2.01	0.42
2:B:351:TYR:CE2	2:B:360:SER:HB2	2.52	0.42
1:I:201:GLN:HG2	1:I:208:THR:HB	2.01	0.42
2:B:368:GLU:HA	2:B:368:GLU:OE1	2.19	0.42
3:C:1110:THR:C	3:C:1111:ILE:HD13	2.40	0.42
2:F:373:GLU:H	2:F:373:GLU:HG2	1.64	0.42
1:I:123:VAL:HG12	1:I:131:GLY:H	1.84	0.42
2:J:483:GLU:OE2	2:J:483:GLU:HA	2.20	0.42
1:A:211:THR:H	1:A:243:ARG:HA	1.83	0.42

Continued on next page...

*Continued from previous page...*

Atom-1	Atom-2	Interatomic distance (Å)	Clash overlap (Å)
2:B:712:ILE:HD13	2:B:712:ILE:HA	1.89	0.42
2:J:391:LYS:HB3	2:J:391:LYS:HE2	1.82	0.42
2:J:484:ILE:HG22	2:J:598:CYS:O	2.19	0.42
2:J:499:GLU:N	2:J:499:GLU:OE1	2.52	0.42
3:K:828:PHE:HD2	3:K:829:PRO:HD2	1.85	0.42
3:C:866:TYR:HB3	3:C:1018:ILE:CD1	2.49	0.42
3:C:863:THR:HG21	3:C:1015:PHE:CE1	2.55	0.42
3:C:1104:ARG:N	3:C:1107:GLU:OE2	2.53	0.42
3:C:1123:HIS:HB2	3:C:1174:ALA:HA	2.02	0.42
3:C:1218:SER:O	3:C:1218:SER:OG	2.32	0.42
2:F:383:PHE:CE2	2:F:385:ALA:HB3	2.55	0.42
2:F:732:TYR:HE2	2:F:741:PRO:HD3	1.85	0.42
2:J:555:ILE:HD12	2:J:555:ILE:HA	1.82	0.42
1:A:134:CYS:SG	1:A:135:LEU:N	2.93	0.42
2:B:364:PRO:O	2:B:384:SER:OG	2.38	0.42
2:B:568:TRP:CZ3	2:B:585:GLY:HA3	2.55	0.42
2:F:387:ILE:HB	2:F:400:ILE:HG12	2.01	0.42
3:K:1107:GLU:N	3:K:1107:GLU:OE1	2.53	0.42
2:F:486:CYS:SG	2:F:596:ILE:HG13	2.60	0.41
1:I:197:HIS:HE1	1:I:221:ARG:NH1	2.18	0.41
2:J:630:ARG:NE	2:J:659:GLU:OE1	2.53	0.41
2:B:691:TYR:C	2:B:699:THR:HG21	2.40	0.41
3:C:1116:CYS:SG	3:C:1117:THR:N	2.93	0.41
3:G:1072:PHE:CD1	3:G:1088:VAL:HB	2.55	0.41
1:A:139:LYS:HB3	1:A:170:CYS:SG	2.60	0.41
2:B:493:THR:HG22	2:B:493:THR:O	2.19	0.41
1:E:165:LYS:HG3	1:E:166:TYR:CD1	2.55	0.41
2:F:554:LEU:HB3	2:F:556:GLU:OE1	2.20	0.41
2:F:337:GLN:NE2	2:F:340:ASN:OD1	2.42	0.41
2:F:622:ASP:OD1	2:F:622:ASP:N	2.53	0.41
3:K:945:LYS:HB3	3:K:945:LYS:HZ2	1.84	0.41
4:D:83:CYS:HB3	4:D:84:ARG:H	1.58	0.41
1:E:116:GLU:OE2	1:E:196:HIS:HB2	2.20	0.41
3:G:1000:PHE:CZ	3:G:1062:LYS:HD2	2.55	0.41
3:G:1138:ASP:OD2	3:G:1139:LYS:HG2	2.20	0.41
3:G:1202:ILE:HD13	3:G:1202:ILE:HA	1.95	0.41
2:J:721:LEU:HD23	2:J:721:LEU:HA	1.79	0.41
2:B:559:HIS:ND1	2:B:559:HIS:C	2.74	0.41
3:C:836:ARG:NH1	3:C:1099:ASP:OD1	2.53	0.41
3:C:1173:THR:OG1	3:C:1174:ALA:N	2.54	0.41
3:G:1011:GLN:OE1	3:G:1011:GLN:HA	2.21	0.41

*Continued on next page...*

Continued from previous page...

Atom-1	Atom-2	Interatomic distance (Å)	Clash overlap (Å)
2:B:742:TRP:CD1	2:B:743:THR:N	2.88	0.41
3:G:997:ASP:HA	3:G:1078:THR:HG21	2.02	0.41
3:G:858:ASN:OD1	3:G:858:ASN:N	2.52	0.41
1:I:165:LYS:O	1:I:165:LYS:HD2	2.21	0.41
2:J:477:ARG:NH2	2:J:599:ARG:HH21	2.19	0.41
3:G:825:VAL:HG13	3:G:828:PHE:HB3	2.02	0.41
3:G:1185:CYS:HB3	3:G:1186:SER:H	1.68	0.41
1:I:165:LYS:HG3	1:I:166:TYR:CE2	2.56	0.41
2:J:402:TYR:OH	2:J:450:ASP:OD1	2.29	0.41
3:K:1185:CYS:HB3	3:K:1186:SER:H	1.61	0.41
4:H:103:ARG:HE	4:H:103:ARG:HB2	1.70	0.41
2:B:498:GLU:H	2:B:498:GLU:HG2	1.59	0.41
3:C:874:TYR:HB3	3:C:918:LEU:HB3	2.03	0.41
3:K:924:ASP:OD1	3:K:925:ARG:N	2.54	0.41
3:K:1114:LEU:HD12	3:K:1135:TYR:HB3	2.03	0.41
2:B:506:PRO:HG3	2:B:576:PRO:O	2.21	0.40
3:C:893:CYS:SG	3:C:894:LYS:N	2.93	0.40
2:F:725:ARG:NH2	2:F:749:CYS:O	2.32	0.40
1:A:112:CYS:SG	1:A:113:MET:N	2.94	0.40
3:C:1179:SER:OG	3:C:1216:ASP:HB2	2.21	0.40
2:J:529:LYS:HE3	2:J:564:ASP:OD1	2.21	0.40
1:A:170:CYS:SG	1:A:171:ALA:N	2.94	0.40
2:J:607:THR:OG1	2:J:618:HIS:HB2	2.20	0.40
3:K:893:CYS:SG	3:K:894:LYS:N	2.94	0.40
1:E:138:ASP:N	1:E:138:ASP:OD1	2.55	0.40
1:E:221:ARG:HA	1:E:222:PRO:HD3	1.97	0.40
2:B:488:THR:O	2:B:593:LEU:HD12	2.21	0.40
3:C:1222:LEU:HD23	3:C:1222:LEU:HA	1.91	0.40
2:J:506:PRO:HG3	2:J:576:PRO:O	2.21	0.40

There are no symmetry-related clashes.

## 5.3 Torsion angles [i](#)

### 5.3.1 Protein backbone [i](#)

In the following table, the Percentiles column shows the percent Ramachandran outliers of the chain as a percentile score with respect to all PDB entries followed by that with respect to all EM entries.

The Analysed column shows the number of residues for which the backbone conformation was analysed, and the total number of residues.



Mol	Chain	Analysed	Favoured	Allowed	Outliers	Percentiles	
1	A	160/162 (99%)	154 (96%)	6 (4%)	0	100	100
1	E	160/162 (99%)	153 (96%)	7 (4%)	0	100	100
1	I	160/162 (99%)	152 (95%)	8 (5%)	0	100	100
2	B	416/418 (100%)	396 (95%)	20 (5%)	0	100	100
2	F	416/418 (100%)	399 (96%)	17 (4%)	0	100	100
2	J	416/418 (100%)	393 (94%)	23 (6%)	0	100	100
3	C	436/438 (100%)	427 (98%)	9 (2%)	0	100	100
3	G	436/438 (100%)	423 (97%)	13 (3%)	0	100	100
3	K	436/438 (100%)	428 (98%)	8 (2%)	0	100	100
4	D	35/37 (95%)	35 (100%)	0	0	100	100
4	H	35/37 (95%)	34 (97%)	1 (3%)	0	100	100
4	L	35/37 (95%)	35 (100%)	0	0	100	100
All	All	3141/3165 (99%)	3029 (96%)	112 (4%)	0	100	100

There are no Ramachandran outliers to report.

### 5.3.2 Protein sidechains [i](#)

In the following table, the Percentiles column shows the percent sidechain outliers of the chain as a percentile score with respect to all PDB entries followed by that with respect to all EM entries.

The Analysed column shows the number of residues for which the sidechain conformation was analysed, and the total number of residues.

Mol	Chain	Analysed	Rotameric	Outliers	Percentiles	
1	A	132/132 (100%)	121 (92%)	11 (8%)	9	32
1	E	132/132 (100%)	121 (92%)	11 (8%)	9	32
1	I	132/132 (100%)	122 (92%)	10 (8%)	11	35
2	B	358/358 (100%)	339 (95%)	19 (5%)	19	46
2	F	358/358 (100%)	343 (96%)	15 (4%)	25	54
2	J	358/358 (100%)	343 (96%)	15 (4%)	25	54
3	C	372/372 (100%)	361 (97%)	11 (3%)	36	63
3	G	372/372 (100%)	356 (96%)	16 (4%)	25	54
3	K	372/372 (100%)	356 (96%)	16 (4%)	25	54

*Continued on next page...*

*Continued from previous page...*

Mol	Chain	Analysed	Rotameric	Outliers	Percentiles	
4	D	33/33 (100%)	33 (100%)	0	100	100
4	H	33/33 (100%)	32 (97%)	1 (3%)	36	63
4	L	33/33 (100%)	32 (97%)	1 (3%)	36	63
All	All	2685/2685 (100%)	2559 (95%)	126 (5%)	24	51

All (126) residues with a non-rotameric sidechain are listed below:

Mol	Chain	Res	Type
1	A	119	CYS
1	A	147	LYS
1	A	157	LYS
1	A	158	LEU
1	A	165	LYS
1	A	177	MET
1	A	227	LYS
1	A	239	ASN
1	A	243	ARG
1	A	251	TRP
1	A	255	MET
2	B	355	CYS
2	B	373	GLU
2	B	376	ASP
2	B	383	PHE
2	B	397	TYR
2	B	450	ASP
2	B	486	CYS
2	B	499	GLU
2	B	514	LEU
2	B	531	LYS
2	B	545	ASN
2	B	547	ASP
2	B	559	HIS
2	B	579	ASP
2	B	598	CYS
2	B	629	TYR
2	B	659	GLU
2	B	718	CYS
2	B	742	TRP
3	C	902	PHE
3	C	910	PHE
3	C	1025	SER

*Continued on next page...*

*Continued from previous page...*

<b>Mol</b>	<b>Chain</b>	<b>Res</b>	<b>Type</b>
3	C	1045	HIS
3	C	1116	CYS
3	C	1124	SER
3	C	1144	SER
3	C	1172	SER
3	C	1205	TYR
3	C	1217	MET
3	C	1229	SER
1	E	111	MET
1	E	134	CYS
1	E	143	PRO
1	E	160	PHE
1	E	178	ARG
1	E	197	HIS
1	E	203	SER
1	E	218	ASP
1	E	219	SER
1	E	229	ARG
1	E	258	ARG
2	F	361	CYS
2	F	391	LYS
2	F	413	ARG
2	F	423	ASP
2	F	486	CYS
2	F	503	HIS
2	F	514	LEU
2	F	532	TYR
2	F	558	CYS
2	F	622	ASP
2	F	672	SER
2	F	708	LEU
2	F	713	SER
2	F	715	PHE
2	F	718	CYS
3	G	883	CYS
3	G	888	LYS
3	G	902	PHE
3	G	910	PHE
3	G	926	SER
3	G	997	ASP
3	G	1045	HIS
3	G	1126	ASP

*Continued on next page...*

*Continued from previous page...*

<b>Mol</b>	<b>Chain</b>	<b>Res</b>	<b>Type</b>
3	G	1138	ASP
3	G	1142	ASP
3	G	1175	SER
3	G	1183	SER
3	G	1194	SER
3	G	1200	ASP
3	G	1216	ASP
3	G	1222	LEU
1	I	111	MET
1	I	125	HIS
1	I	160	PHE
1	I	176	HIS
1	I	186	HIS
1	I	197	HIS
1	I	225	ASP
1	I	243	ARG
1	I	251	TRP
1	I	252	ASN
2	J	352	CYS
2	J	361	CYS
2	J	383	PHE
2	J	384	SER
2	J	404	ASP
2	J	423	ASP
2	J	444	LEU
2	J	510	ASP
2	J	532	TYR
2	J	547	ASP
2	J	559	HIS
2	J	595	ASN
2	J	715	PHE
2	J	719	TYR
2	J	742	TRP
3	K	822	MET
3	K	910	PHE
3	K	926	SER
3	K	927	ASP
3	K	932	ASP
3	K	960	ASP
3	K	966	ASP
3	K	1003	ASP
3	K	1014	ARG

*Continued on next page...*

*Continued from previous page...*

Mol	Chain	Res	Type
3	K	1045	HIS
3	K	1060	LYS
3	K	1100	SER
3	K	1126	ASP
3	K	1214	PHE
3	K	1218	SER
3	K	1248	CYS
4	H	115	ASP
4	L	97	CYS

Sometimes sidechains can be flipped to improve hydrogen bonding and reduce clashes. All (2) such sidechains are listed below:

Mol	Chain	Res	Type
2	B	516	GLN
3	K	1045	HIS

### 5.3.3 RNA [i](#)

There are no RNA molecules in this entry.

## 5.4 Non-standard residues in protein, DNA, RNA chains [i](#)

There are no non-standard protein/DNA/RNA residues in this entry.

## 5.5 Carbohydrates [i](#)

12 monosaccharides are modelled in this entry.

In the following table, the Counts columns list the number of bonds (or angles) for which Mogul statistics could be retrieved, the number of bonds (or angles) that are observed in the model and the number of bonds (or angles) that are defined in the Chemical Component Dictionary. The Link column lists molecule types, if any, to which the group is linked. The Z score for a bond length (or angle) is the number of standard deviations the observed value is removed from the expected value. A bond length (or angle) with  $|Z| > 2$  is considered an outlier worth inspection. RMSZ is the root-mean-square of all Z scores of the bond lengths (or angles).

Mol	Type	Chain	Res	Link	Bond lengths			Bond angles		
					Counts	RMSZ	$\# Z  > 2$	Counts	RMSZ	$\# Z  > 2$
5	NAG	M	1	5,2	14,14,15	0.30	0	17,19,21	0.40	0
5	NAG	M	2	5	14,14,15	0.22	0	17,19,21	0.44	0

Mol	Type	Chain	Res	Link	Bond lengths			Bond angles		
					Counts	RMSZ	# Z  > 2	Counts	RMSZ	# Z  > 2
5	NAG	N	1	5,2	14,14,15	0.31	0	17,19,21	0.47	0
5	NAG	N	2	5	14,14,15	0.26	0	17,19,21	0.41	0
5	NAG	O	1	5,2	14,14,15	0.24	0	17,19,21	0.36	0
5	NAG	O	2	5	14,14,15	0.19	0	17,19,21	0.42	0
5	NAG	P	1	5,2	14,14,15	0.58	0	17,19,21	0.86	1 (5%)
5	NAG	P	2	5	14,14,15	0.28	0	17,19,21	0.39	0
5	NAG	Q	1	5,2	14,14,15	0.24	0	17,19,21	0.39	0
5	NAG	Q	2	5	14,14,15	0.22	0	17,19,21	0.46	0
5	NAG	R	1	5,2	14,14,15	0.58	0	17,19,21	0.88	1 (5%)
5	NAG	R	2	5	14,14,15	0.33	0	17,19,21	0.40	0

In the following table, the Chirals column lists the number of chiral outliers, the number of chiral centers analysed, the number of these observed in the model and the number defined in the Chemical Component Dictionary. Similar counts are reported in the Torsion and Rings columns. '2' means no outliers of that kind were identified.

Mol	Type	Chain	Res	Link	Chirals	Torsions	Rings
5	NAG	M	1	5,2	-	0/6/23/26	0/1/1/1
5	NAG	M	2	5	-	2/6/23/26	0/1/1/1
5	NAG	N	1	5,2	-	0/6/23/26	0/1/1/1
5	NAG	N	2	5	-	1/6/23/26	0/1/1/1
5	NAG	O	1	5,2	-	0/6/23/26	0/1/1/1
5	NAG	O	2	5	-	0/6/23/26	0/1/1/1
5	NAG	P	1	5,2	-	2/6/23/26	0/1/1/1
5	NAG	P	2	5	-	1/6/23/26	0/1/1/1
5	NAG	Q	1	5,2	-	0/6/23/26	0/1/1/1
5	NAG	Q	2	5	-	2/6/23/26	0/1/1/1
5	NAG	R	1	5,2	-	2/6/23/26	0/1/1/1
5	NAG	R	2	5	-	2/6/23/26	0/1/1/1

There are no bond length outliers.

All (2) bond angle outliers are listed below:

Mol	Chain	Res	Type	Atoms	Z	Observed(°)	Ideal(°)
5	R	1	NAG	C1-O5-C5	3.14	116.45	112.19
5	P	1	NAG	C1-O5-C5	3.06	116.33	112.19

There are no chirality outliers.

All (12) torsion outliers are listed below:

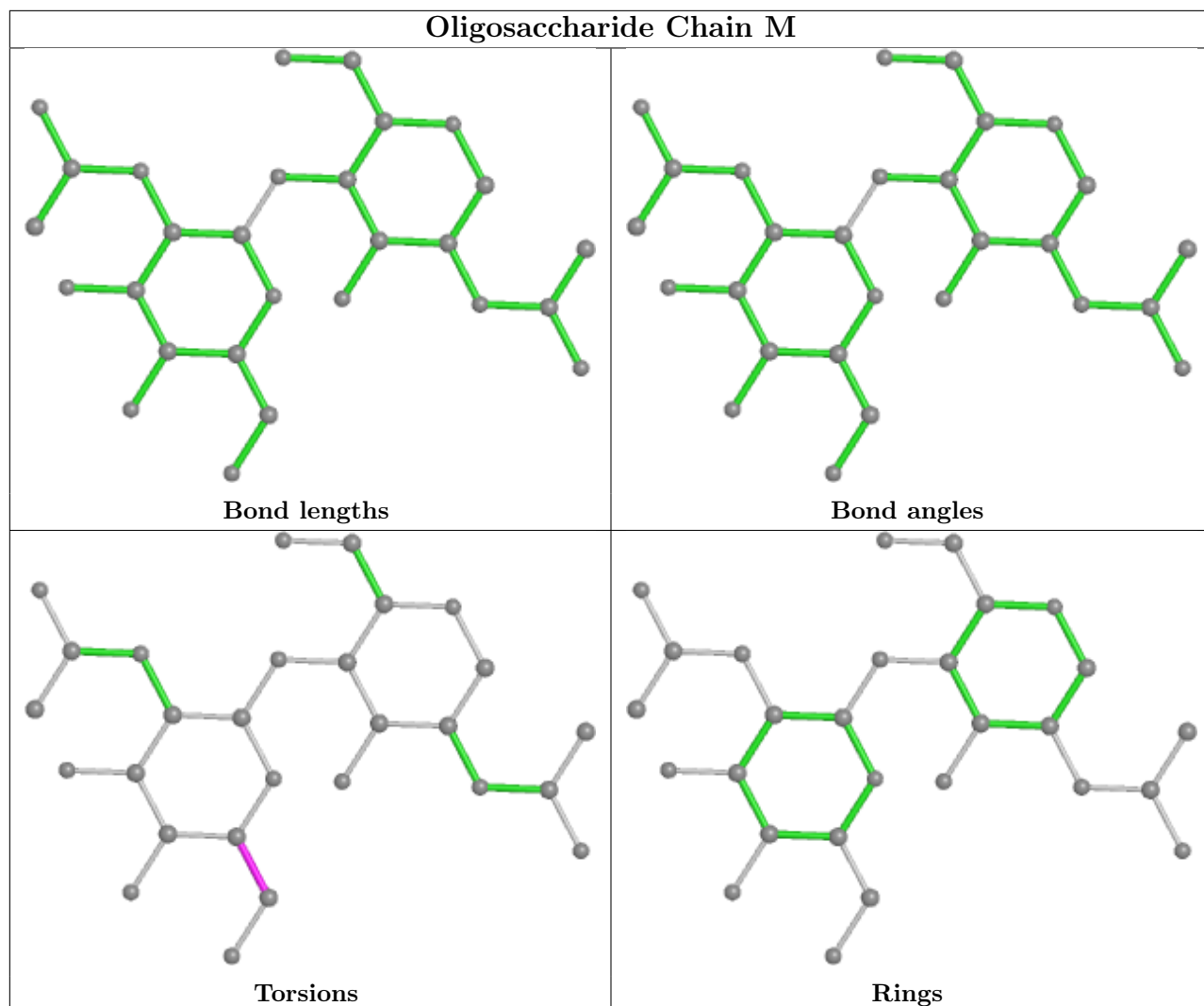
Mol	Chain	Res	Type	Atoms
5	M	2	NAG	O5-C5-C6-O6
5	P	1	NAG	O5-C5-C6-O6
5	M	2	NAG	C4-C5-C6-O6
5	Q	2	NAG	O5-C5-C6-O6
5	P	1	NAG	C4-C5-C6-O6
5	Q	2	NAG	C4-C5-C6-O6
5	R	1	NAG	O5-C5-C6-O6
5	R	1	NAG	C4-C5-C6-O6
5	P	2	NAG	O5-C5-C6-O6
5	N	2	NAG	O5-C5-C6-O6
5	R	2	NAG	C4-C5-C6-O6
5	R	2	NAG	O5-C5-C6-O6

There are no ring outliers.

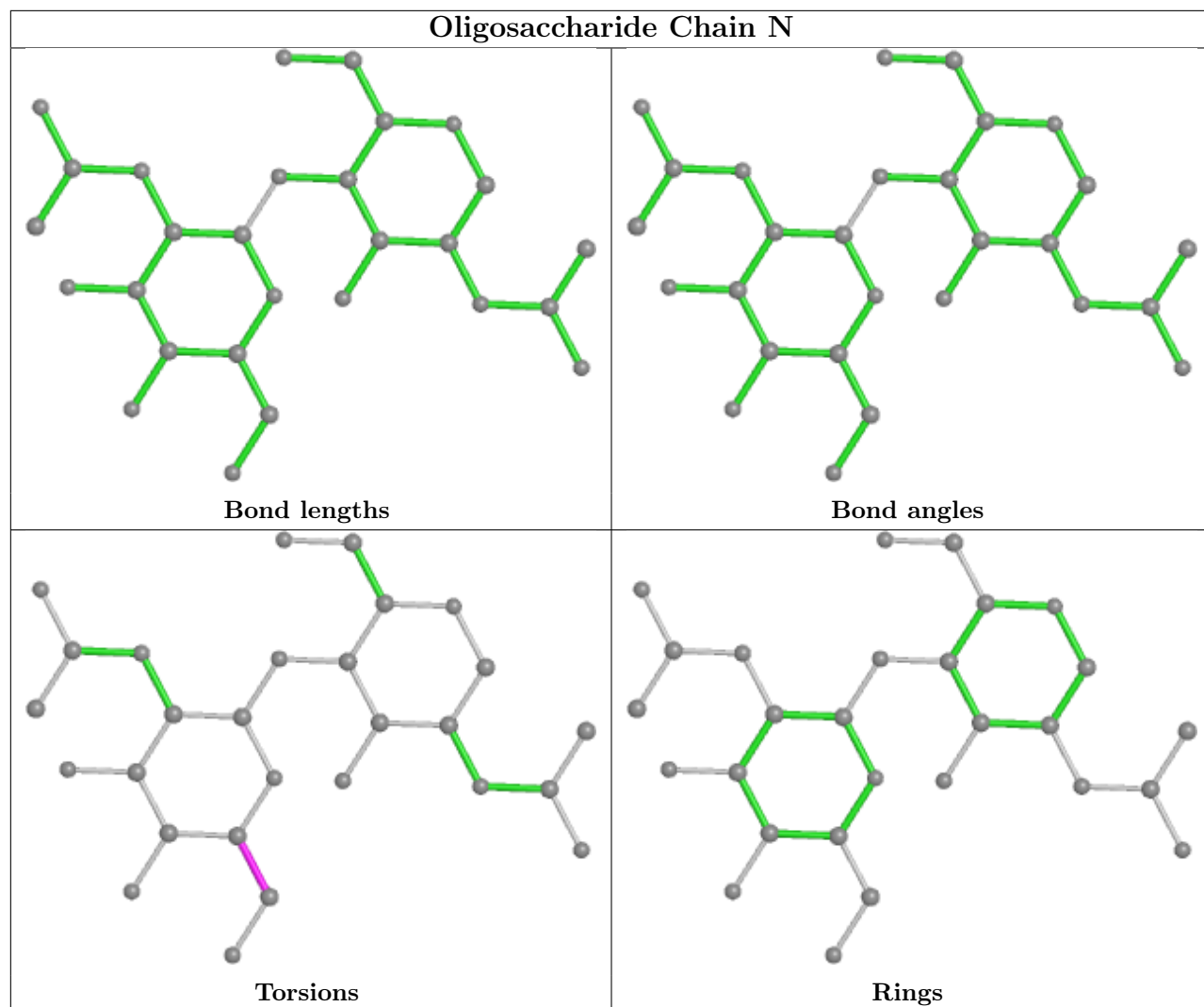
2 monomers are involved in 3 short contacts:

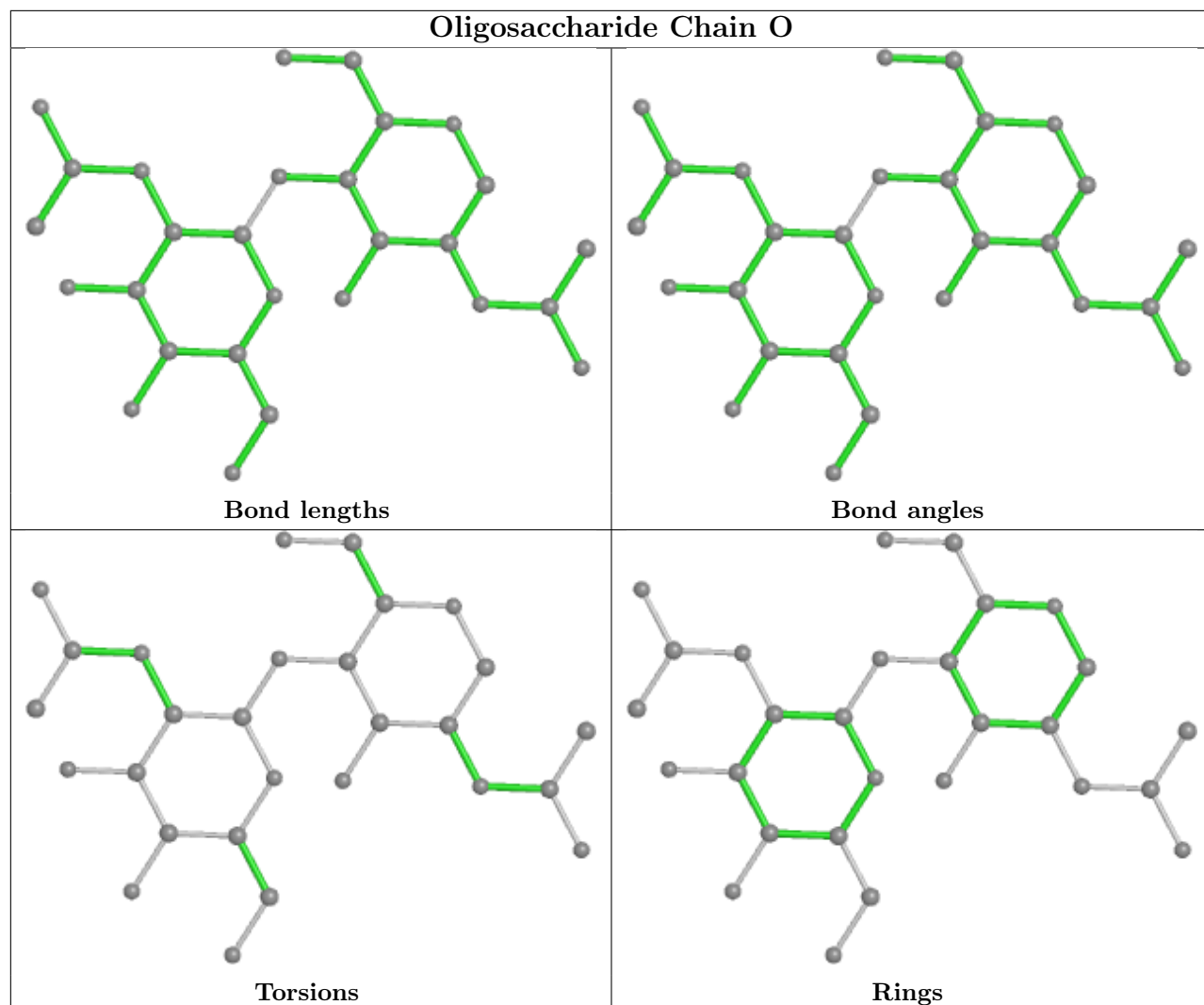
Mol	Chain	Res	Type	Clashes	Symm-Clashes
5	N	1	NAG	1	0
5	P	1	NAG	2	0

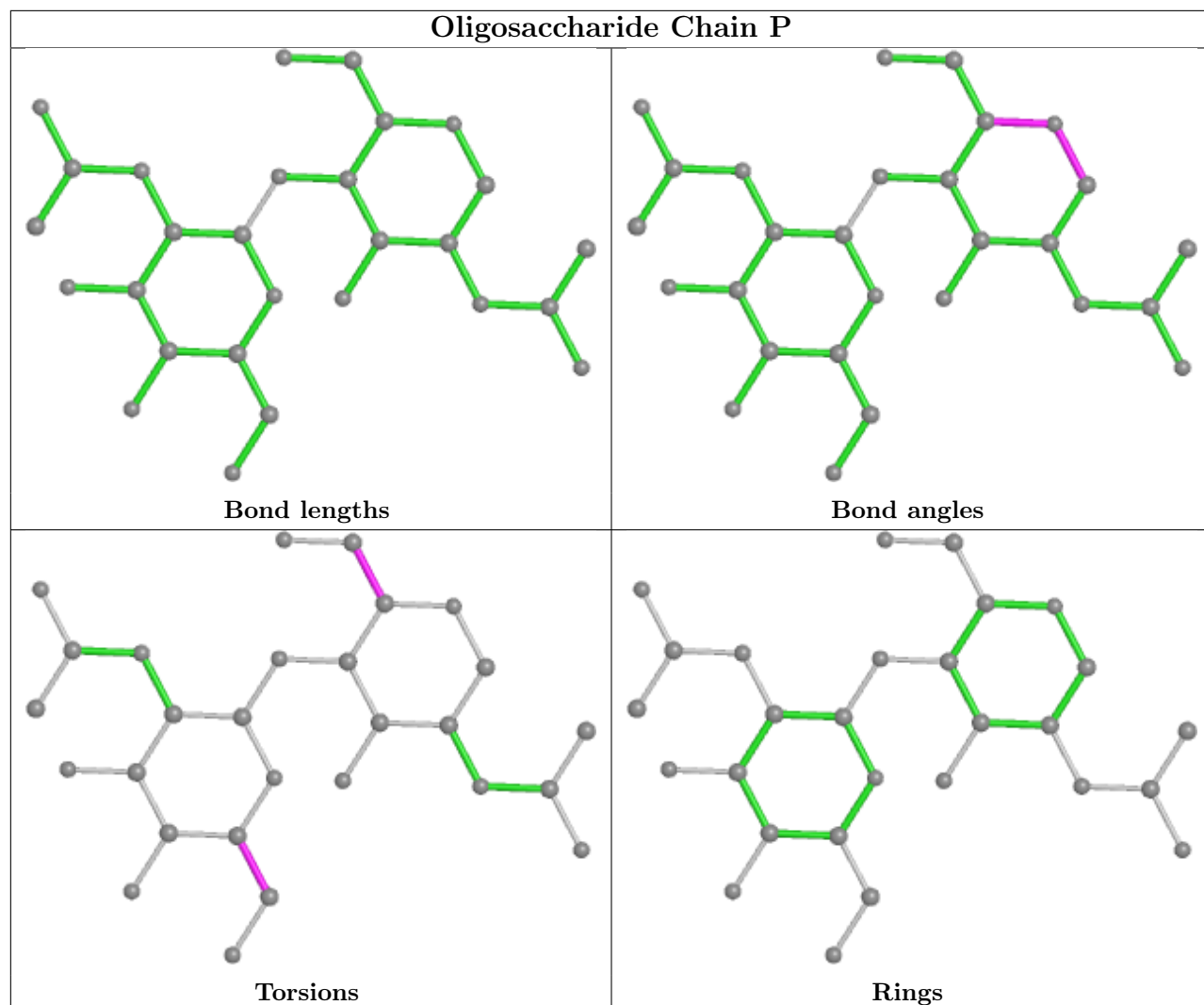
The following is a two-dimensional graphical depiction of Mogul quality analysis of bond lengths, bond angles, torsion angles, and ring geometry for oligosaccharide.

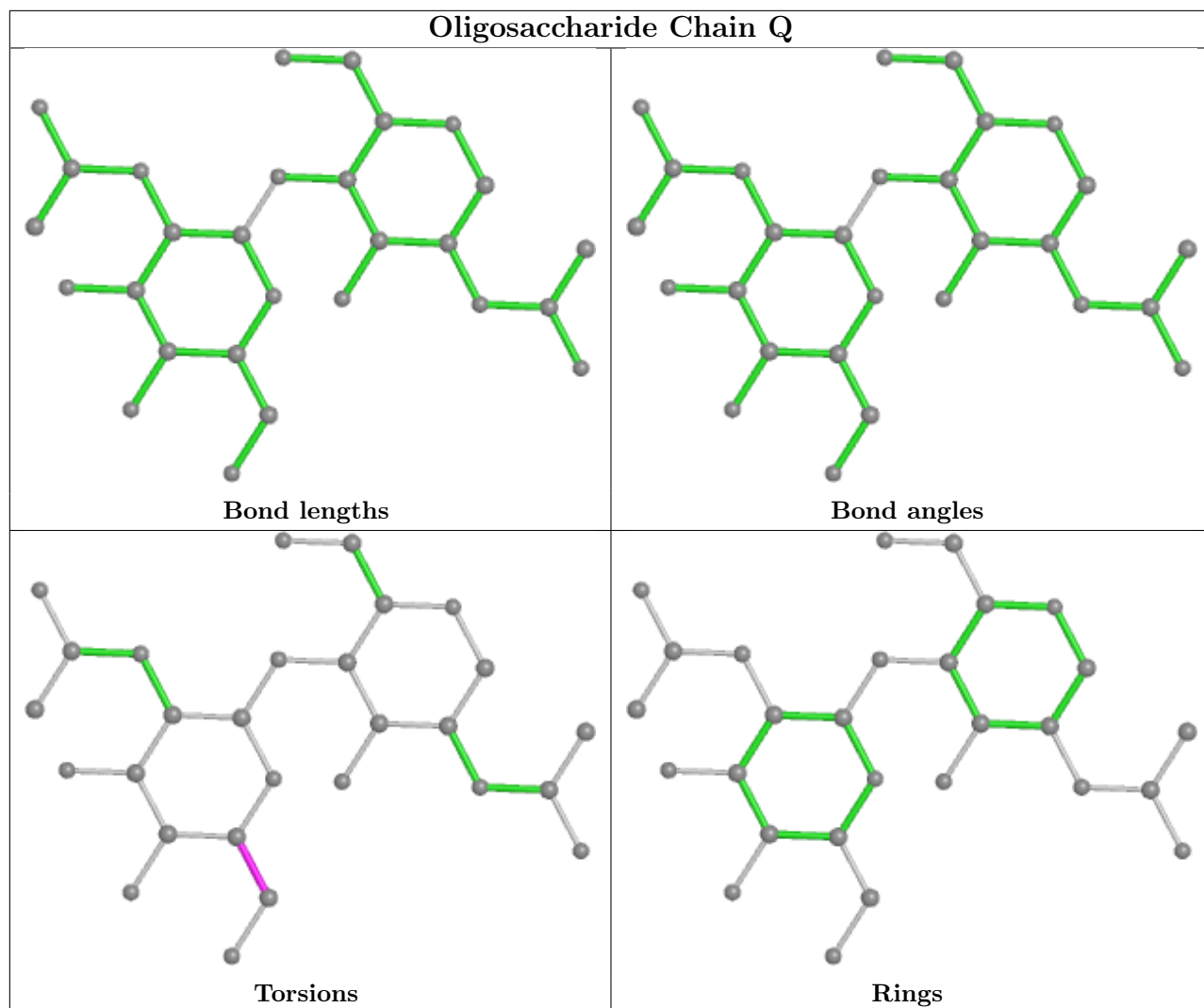


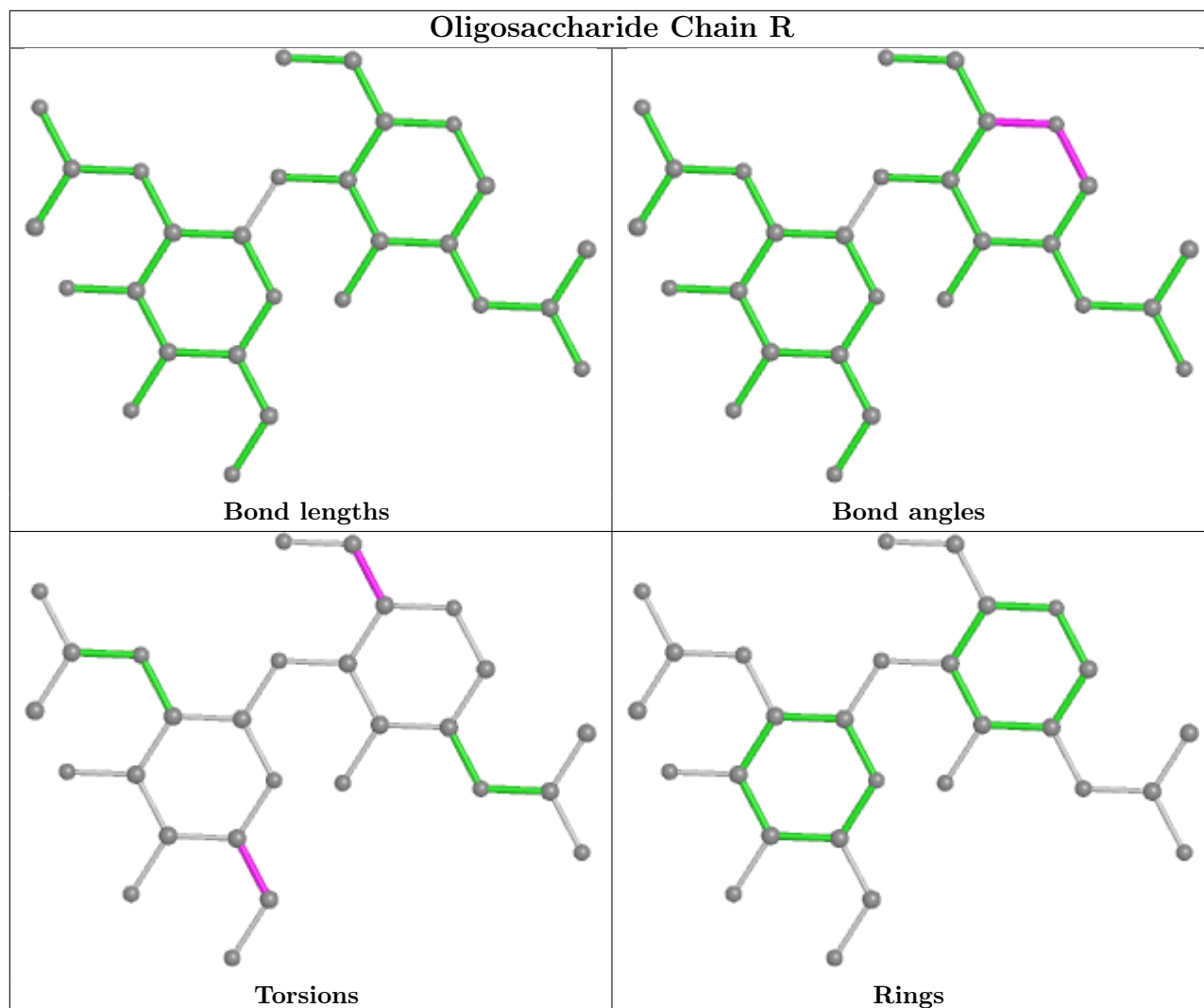












## 5.6 Ligand geometry [i](#)

Of 6 ligands modelled in this entry, 3 are monoatomic - leaving 3 for Mogul analysis.

In the following table, the Counts columns list the number of bonds (or angles) for which Mogul statistics could be retrieved, the number of bonds (or angles) that are observed in the model and the number of bonds (or angles) that are defined in the Chemical Component Dictionary. The Link column lists molecule types, if any, to which the group is linked. The Z score for a bond length (or angle) is the number of standard deviations the observed value is removed from the expected value. A bond length (or angle) with  $|Z| > 2$  is considered an outlier worth inspection. RMSZ is the root-mean-square of all Z scores of the bond lengths (or angles).

Mol	Type	Chain	Res	Link	Bond lengths			Bond angles		
					Counts	RMSZ	$\# Z  > 2$	Counts	RMSZ	$\# Z  > 2$
6	NAG	G	1701	3	14,14,15	0.20	0	17,19,21	0.52	0
6	NAG	C	1701	3	14,14,15	0.20	0	17,19,21	0.49	0
6	NAG	K	1701	3	14,14,15	0.21	0	17,19,21	0.43	0

In the following table, the Chirals column lists the number of chiral outliers, the number of chiral centers analysed, the number of these observed in the model and the number defined in the Chemical Component Dictionary. Similar counts are reported in the Torsion and Rings columns. '-' means no outliers of that kind were identified.

Mol	Type	Chain	Res	Link	Chirals	Torsions	Rings
6	NAG	G	1701	3	-	0/6/23/26	0/1/1/1
6	NAG	C	1701	3	-	0/6/23/26	0/1/1/1
6	NAG	K	1701	3	-	0/6/23/26	0/1/1/1

There are no bond length outliers.

There are no bond angle outliers.

There are no chirality outliers.

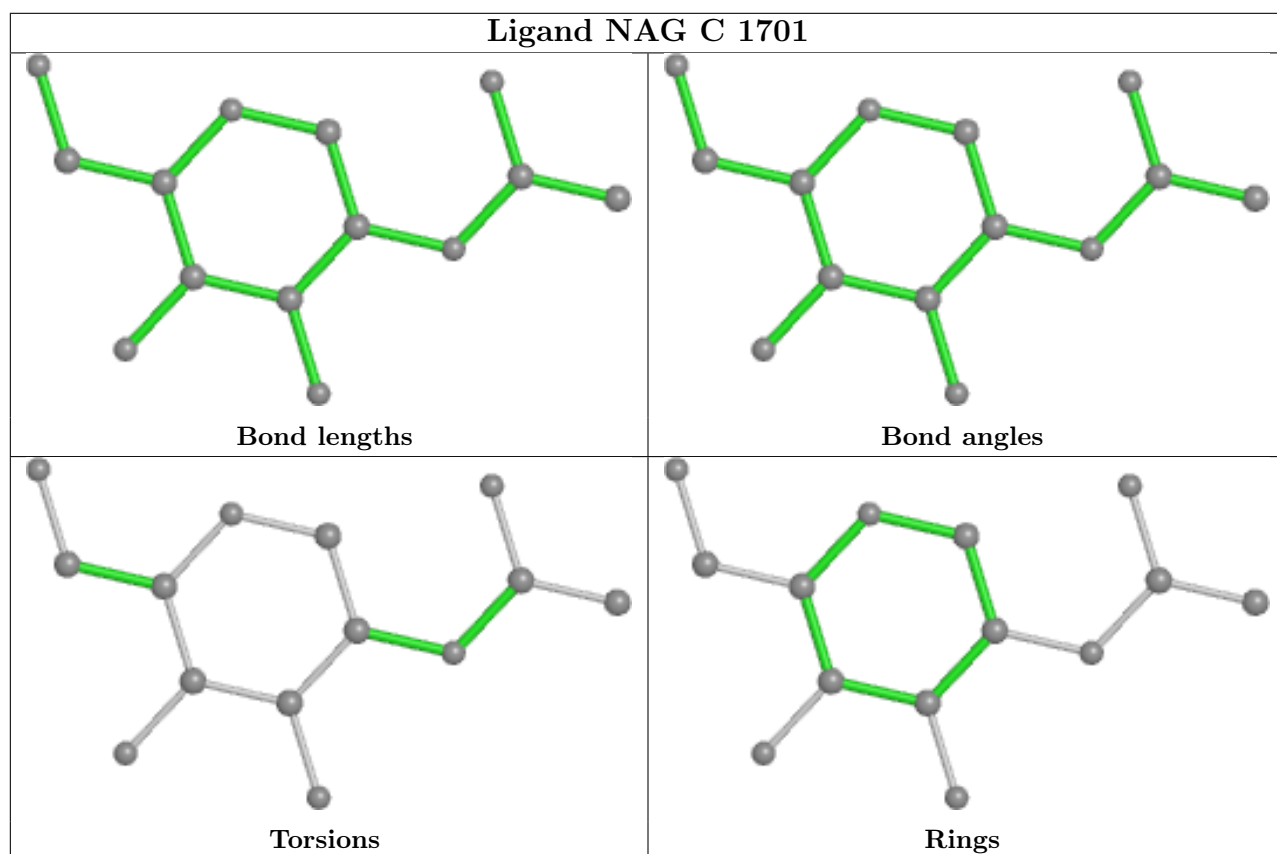
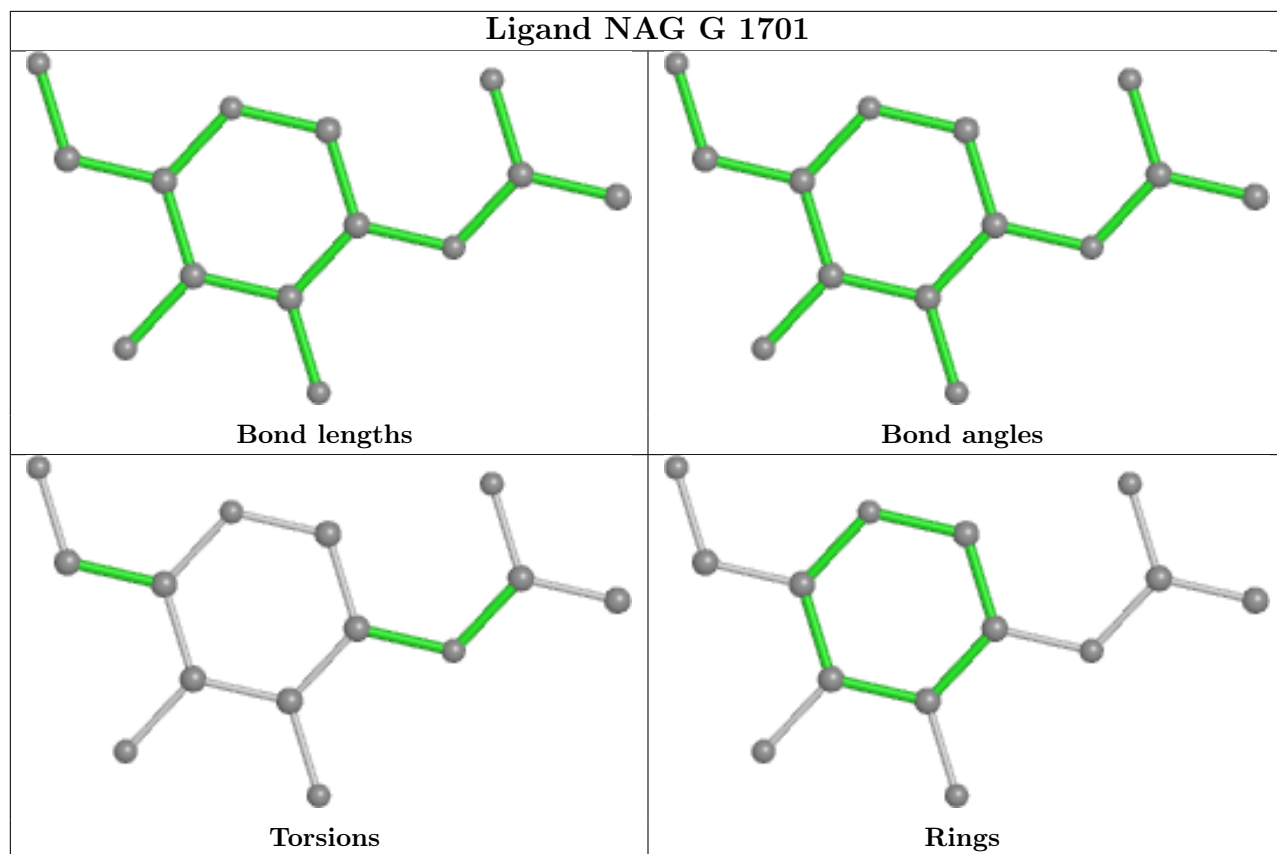
There are no torsion outliers.

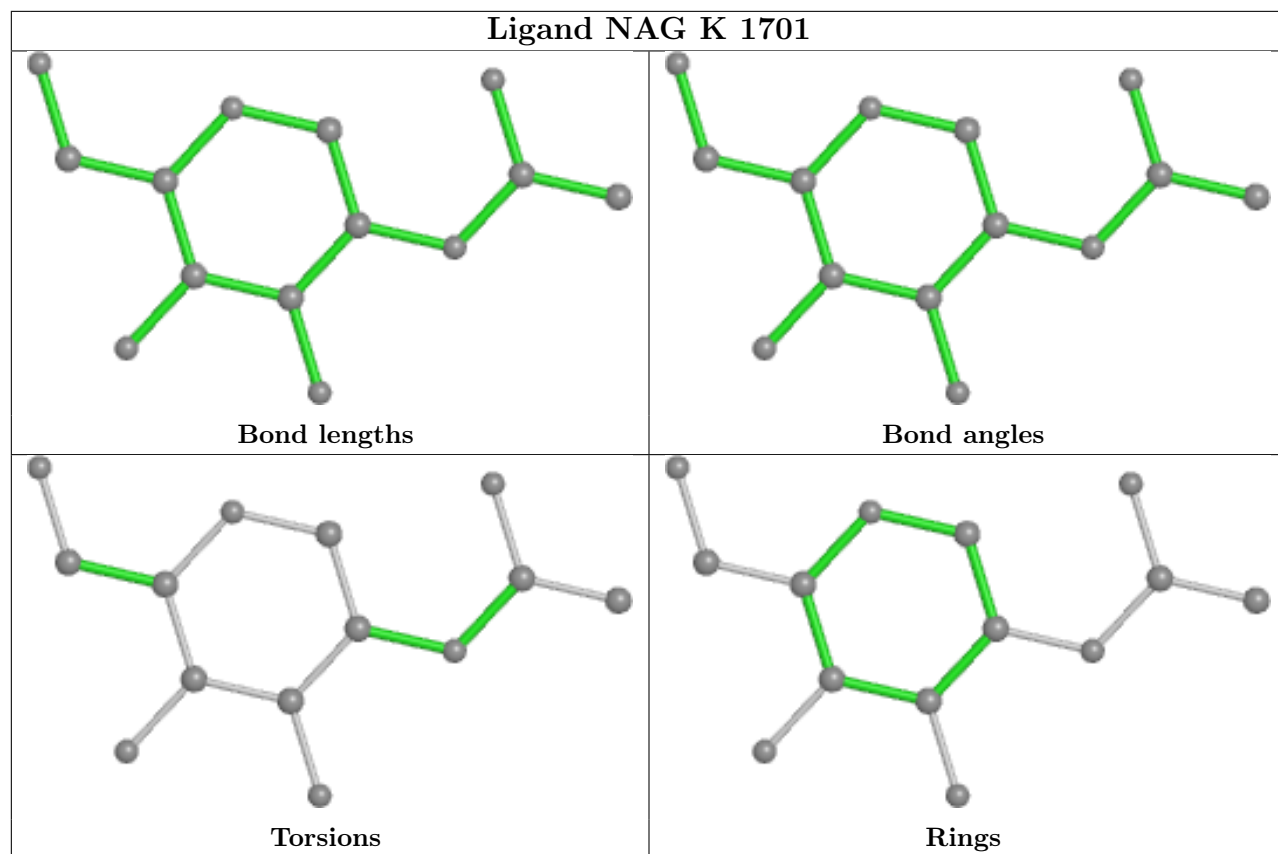
There are no ring outliers.

1 monomer is involved in 1 short contact:

Mol	Chain	Res	Type	Clashes	Symm-Clashes
6	G	1701	NAG	1	0

The following is a two-dimensional graphical depiction of Mogul quality analysis of bond lengths, bond angles, torsion angles, and ring geometry for all instances of the Ligand of Interest. In addition, ligands with molecular weight > 250 and outliers as shown on the validation Tables will also be included. For torsion angles, if less than 5% of the Mogul distribution of torsion angles is within 10 degrees of the torsion angle in question, then that torsion angle is considered an outlier. Any bond that is central to one or more torsion angles identified as an outlier by Mogul will be highlighted in the graph. For rings, the root-mean-square deviation (RMSD) between the ring in question and similar rings identified by Mogul is calculated over all ring torsion angles. If the average RMSD is greater than 60 degrees and the minimal RMSD between the ring in question and any Mogul-identified rings is also greater than 60 degrees, then that ring is considered an outlier. The outliers are highlighted in purple. The color gray indicates Mogul did not find sufficient equivalents in the CSD to analyse the geometry.





## 5.7 Other polymers [i](#)

There are no such residues in this entry.

## 5.8 Polymer linkage issues [i](#)

There are no chain breaks in this entry.



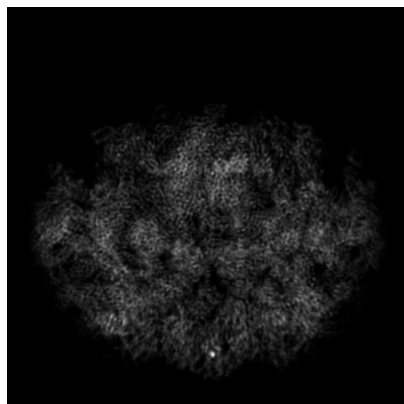
## 6 Map visualisation [i](#)

This section contains visualisations of the EMDB entry EMD-37981. These allow visual inspection of the internal detail of the map and identification of artifacts.

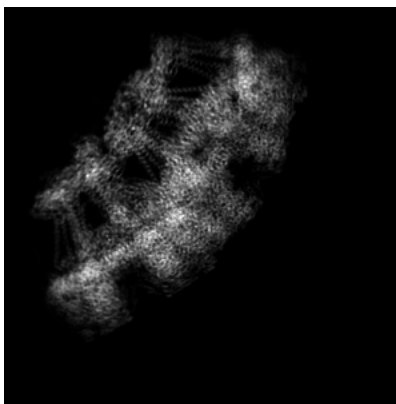
Images derived from a raw map, generated by summing the deposited half-maps, are presented below the corresponding image components of the primary map to allow further visual inspection and comparison with those of the primary map.

### 6.1 Orthogonal projections [i](#)

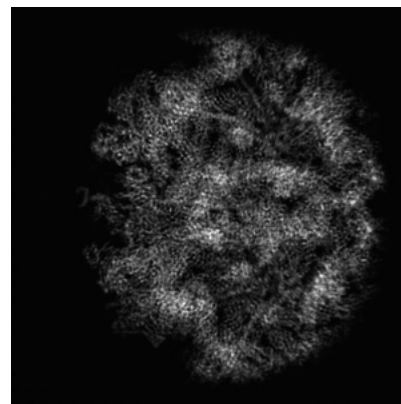
#### 6.1.1 Primary map



X

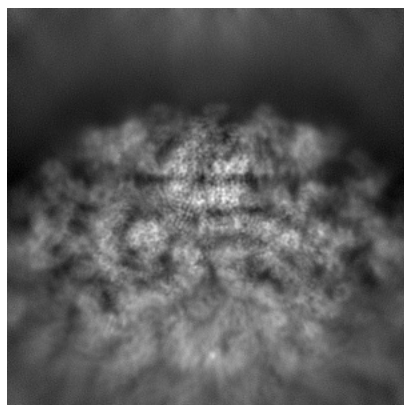


Y



Z

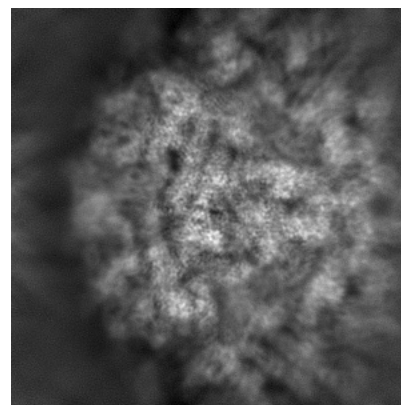
#### 6.1.2 Raw map



X



Y

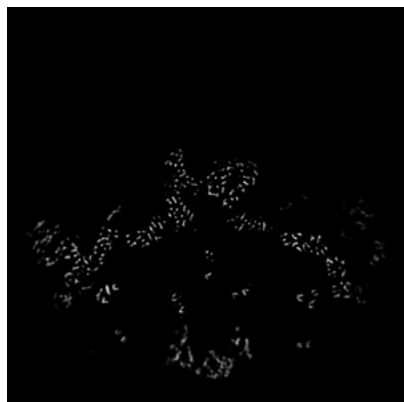


Z

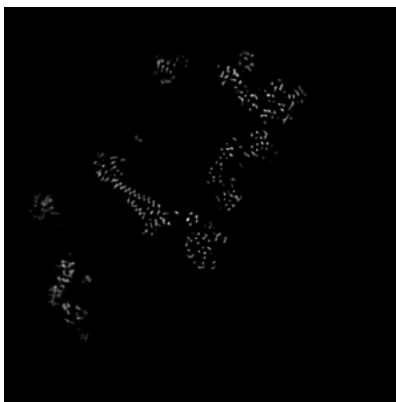
The images above show the map projected in three orthogonal directions.

## 6.2 Central slices [i](#)

### 6.2.1 Primary map



X Index: 192

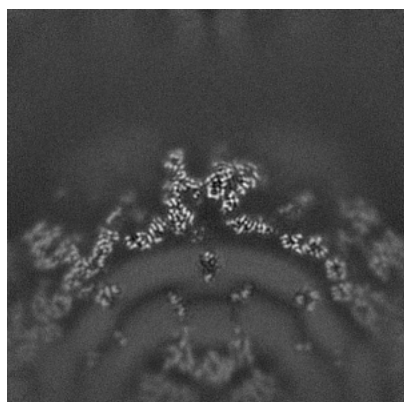


Y Index: 192



Z Index: 192

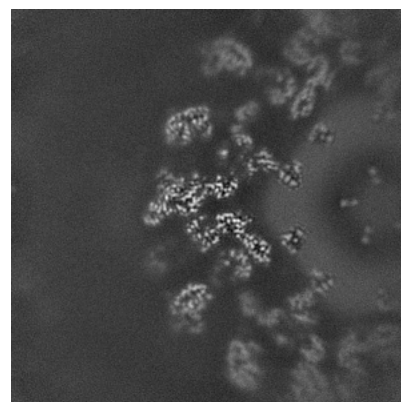
### 6.2.2 Raw map



X Index: 192



Y Index: 192



Z Index: 192

The images above show central slices of the map in three orthogonal directions.

## 6.3 Largest variance slices [i](#)

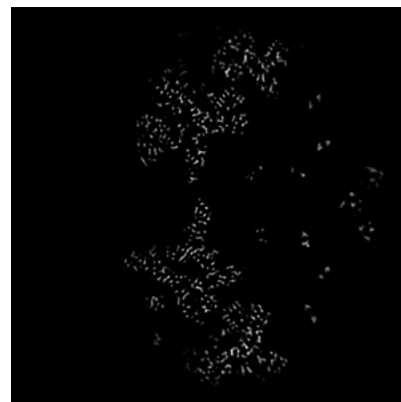
### 6.3.1 Primary map



X Index: 184

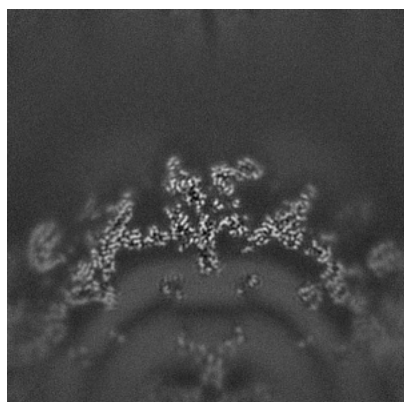


Y Index: 167

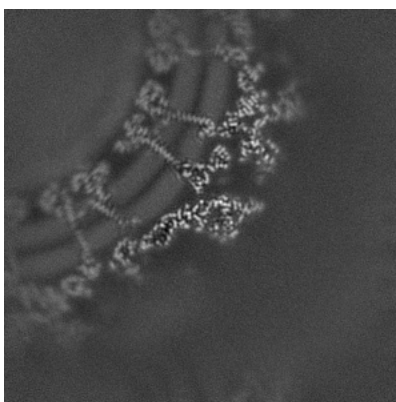


Z Index: 163

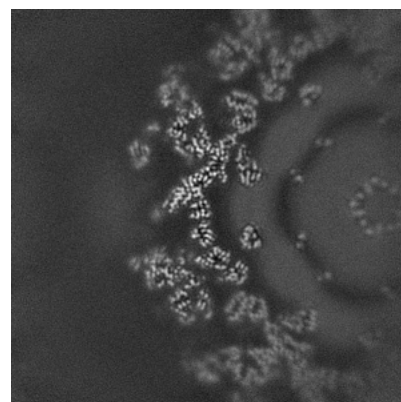
### 6.3.2 Raw map



X Index: 183



Y Index: 167

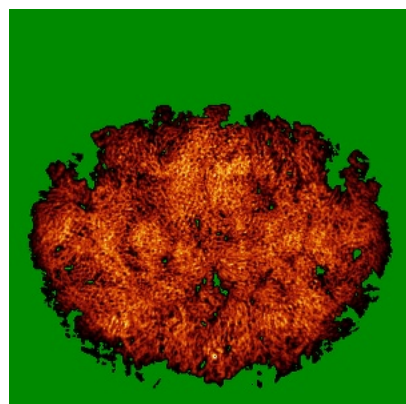


Z Index: 173

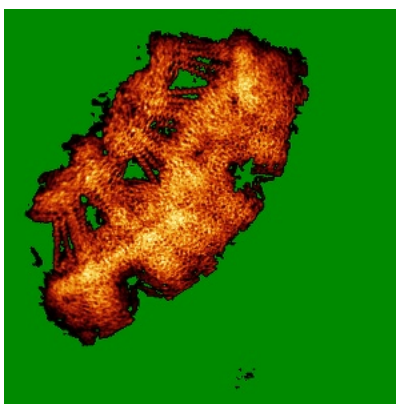
The images above show the largest variance slices of the map in three orthogonal directions.

## 6.4 Orthogonal standard-deviation projections (False-color) [i](#)

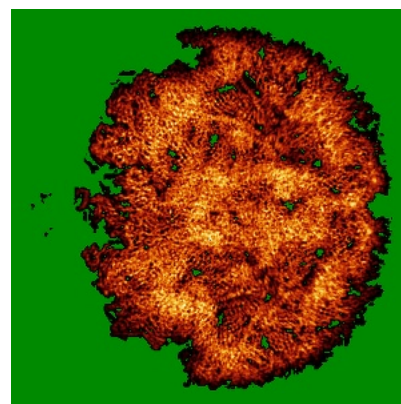
### 6.4.1 Primary map



X

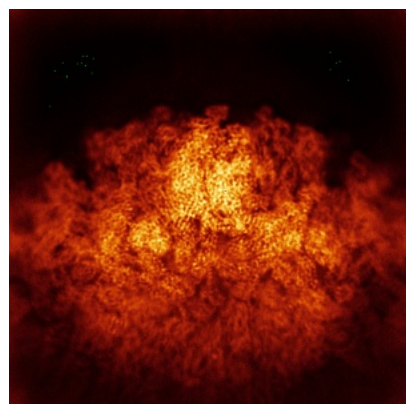


Y

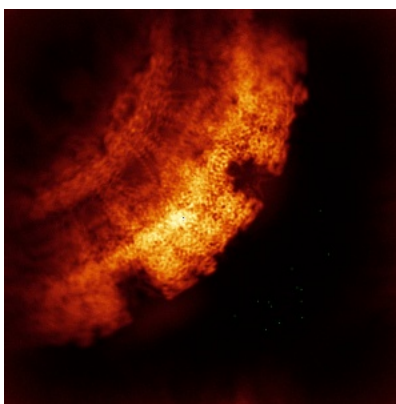


Z

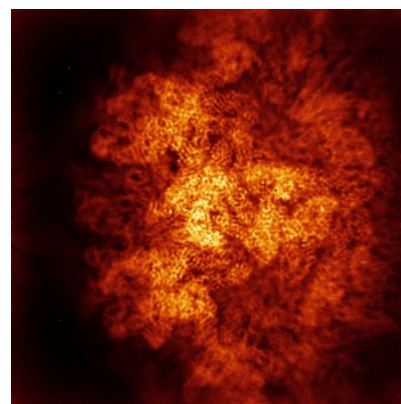
### 6.4.2 Raw map



X



Y



Z

The images above show the map standard deviation projections with false color in three orthogonal directions. Minimum values are shown in green, max in blue, and dark to light orange shades represent small to large values respectively.

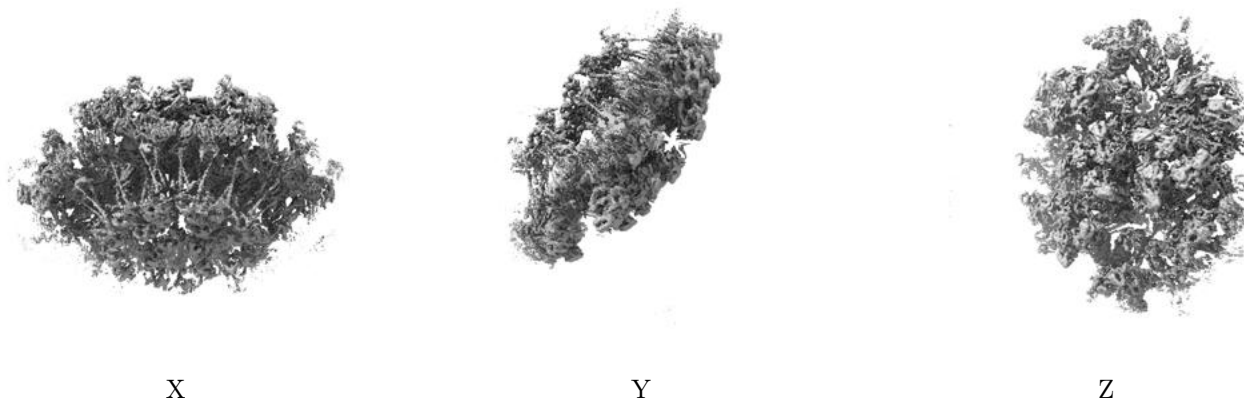
## 6.5 Orthogonal surface views [i](#)

### 6.5.1 Primary map



The images above show the 3D surface view of the map at the recommended contour level 0.1. These images, in conjunction with the slice images, may facilitate assessment of whether an appropriate contour level has been provided.

### 6.5.2 Raw map



These images show the 3D surface of the raw map. The raw map's contour level was selected so that its surface encloses the same volume as the primary map does at its recommended contour level.

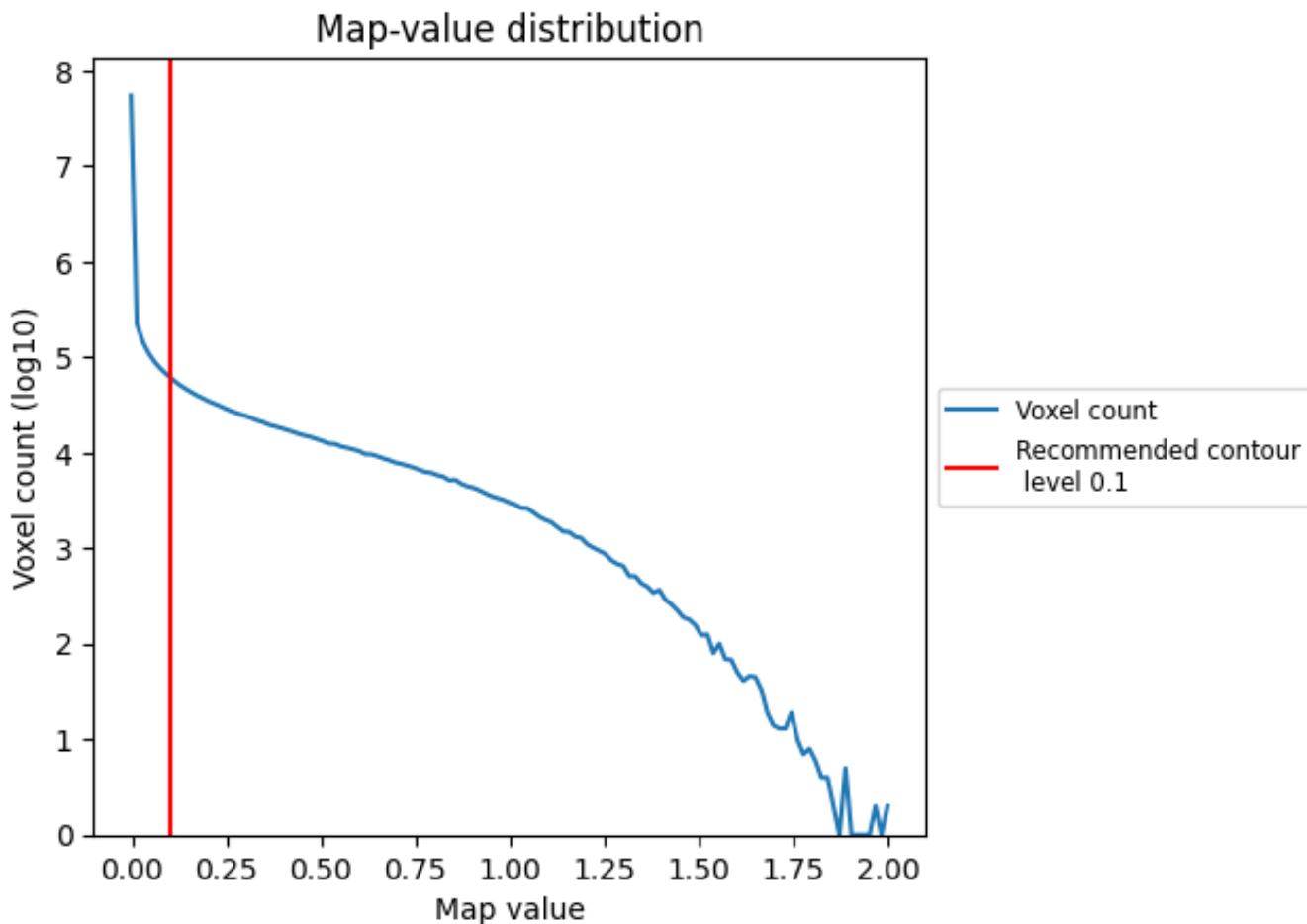
## 6.6 Mask visualisation [i](#)

This section was not generated. No masks/segmentation were deposited.

## 7 Map analysis [i](#)

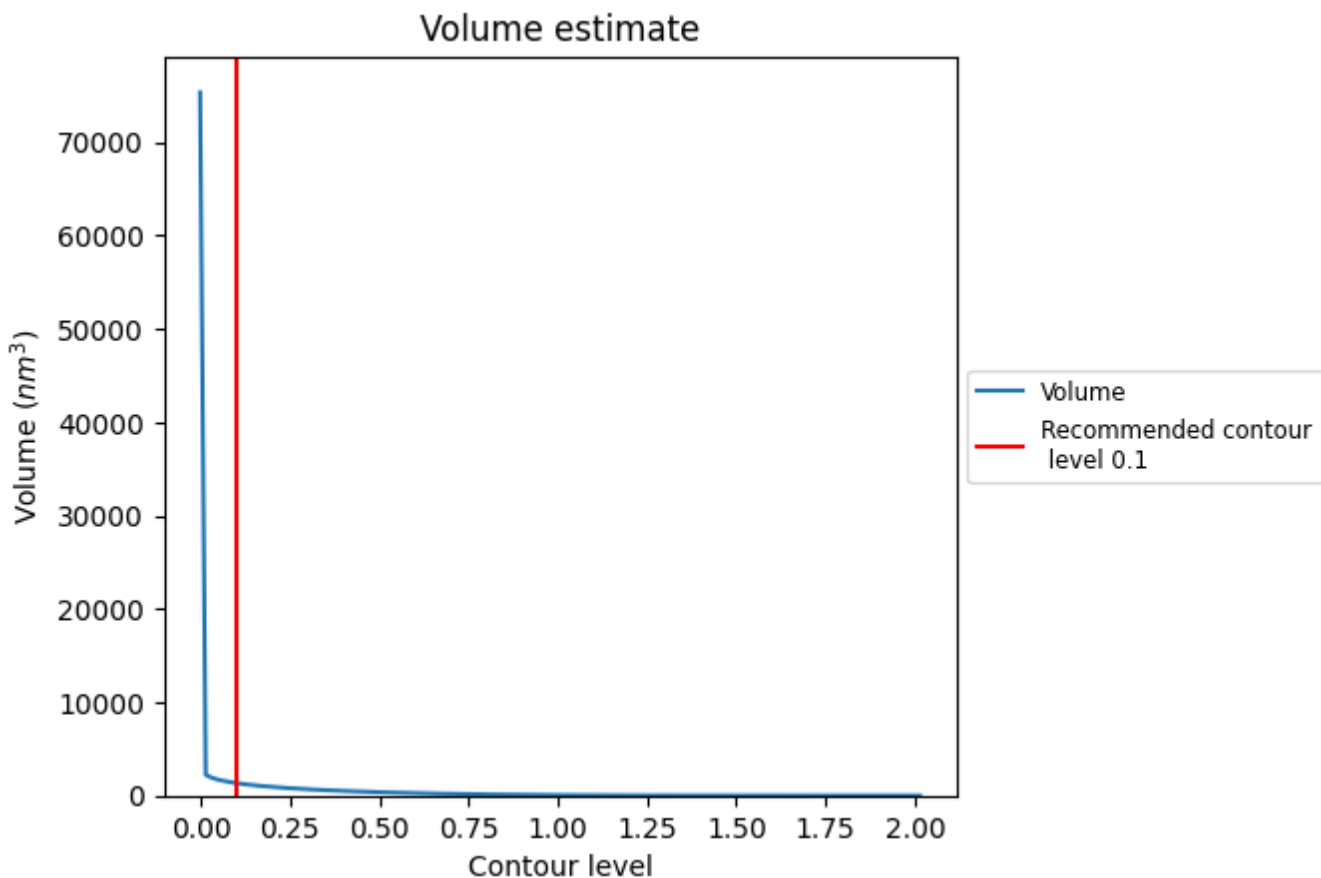
This section contains the results of statistical analysis of the map.

### 7.1 Map-value distribution [i](#)



The map-value distribution is plotted in 128 intervals along the x-axis. The y-axis is logarithmic. A spike in this graph at zero usually indicates that the volume has been masked.

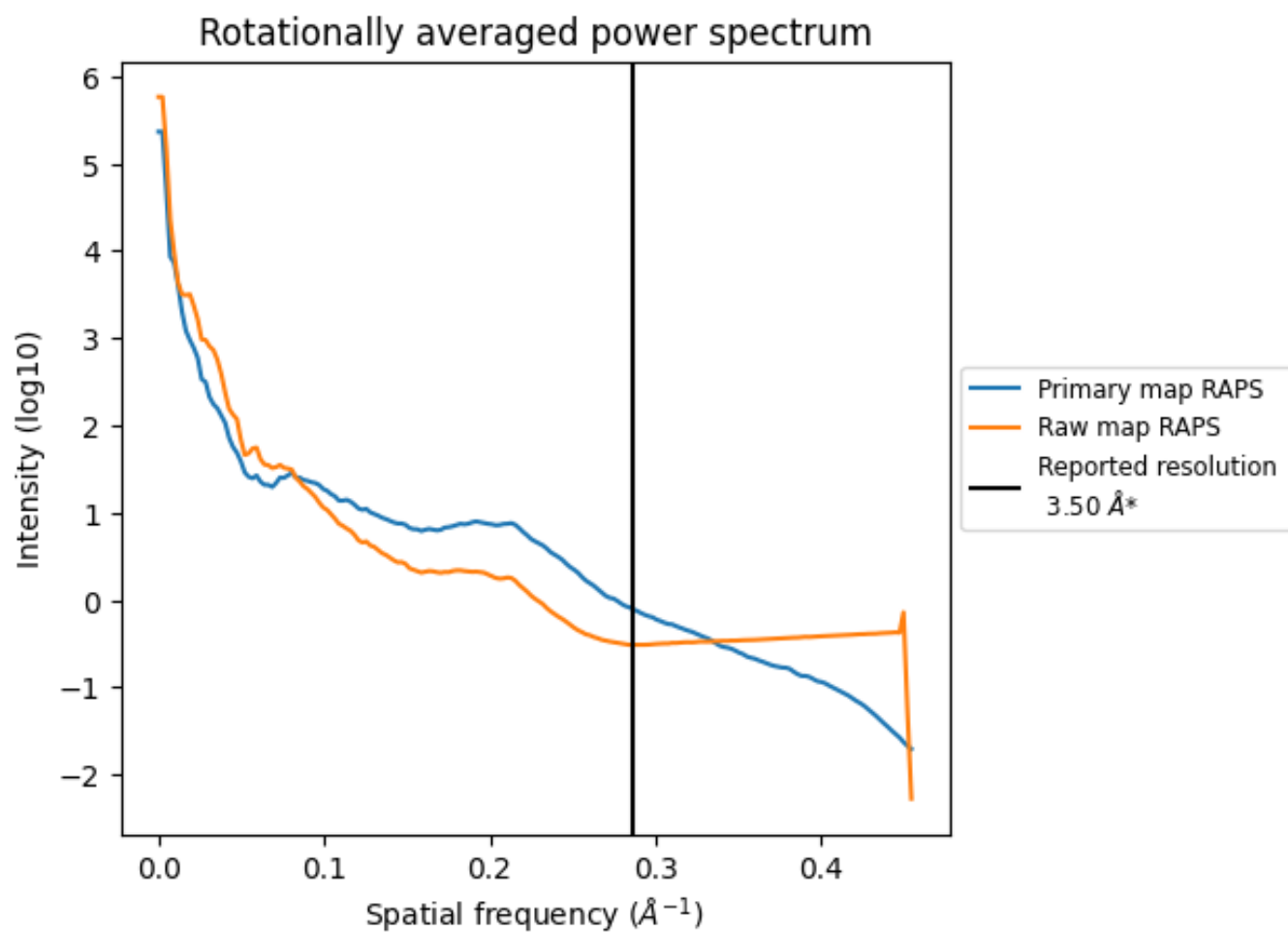
## 7.2 Volume estimate [i](#)



The volume at the recommended contour level is 1334  $\text{nm}^3$ ; this corresponds to an approximate mass of 1205 kDa.

The volume estimate graph shows how the enclosed volume varies with the contour level. The recommended contour level is shown as a vertical line and the intersection between the line and the curve gives the volume of the enclosed surface at the given level.

### 7.3 Rotationally averaged power spectrum i



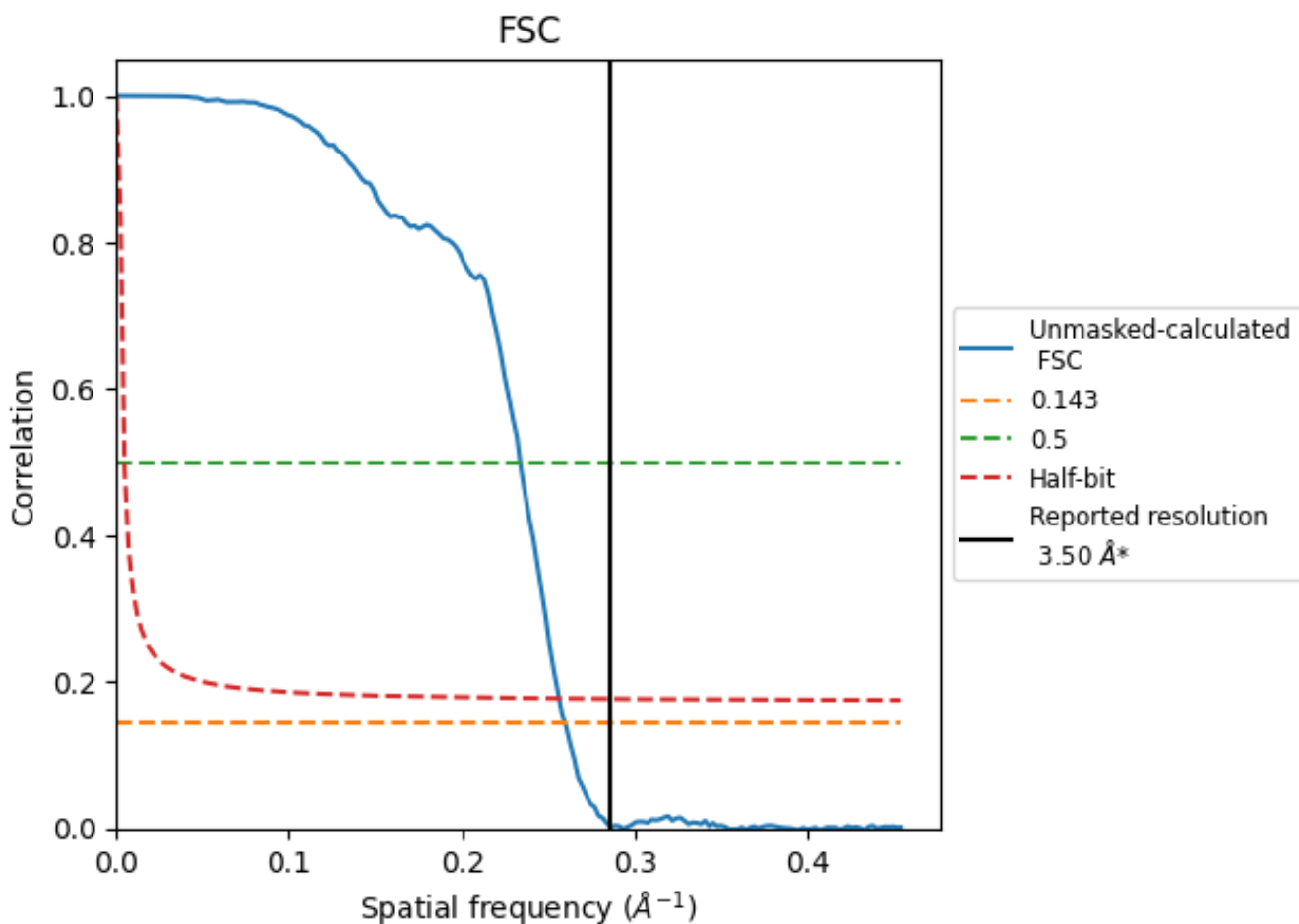
\*Reported resolution corresponds to spatial frequency of 0.286 Å<sup>-1</sup>



## 8 Fourier-Shell correlation [i](#)

Fourier-Shell Correlation (FSC) is the most commonly used method to estimate the resolution of single-particle and subtomogram-averaged maps. The shape of the curve depends on the imposed symmetry, mask and whether or not the two 3D reconstructions used were processed from a common reference. The reported resolution is shown as a black line. A curve is displayed for the half-bit criterion in addition to lines showing the 0.143 gold standard cut-off and 0.5 cut-off.

### 8.1 FSC [i](#)



\*Reported resolution corresponds to spatial frequency of 0.286 Å<sup>-1</sup>

## 8.2 Resolution estimates [i](#)

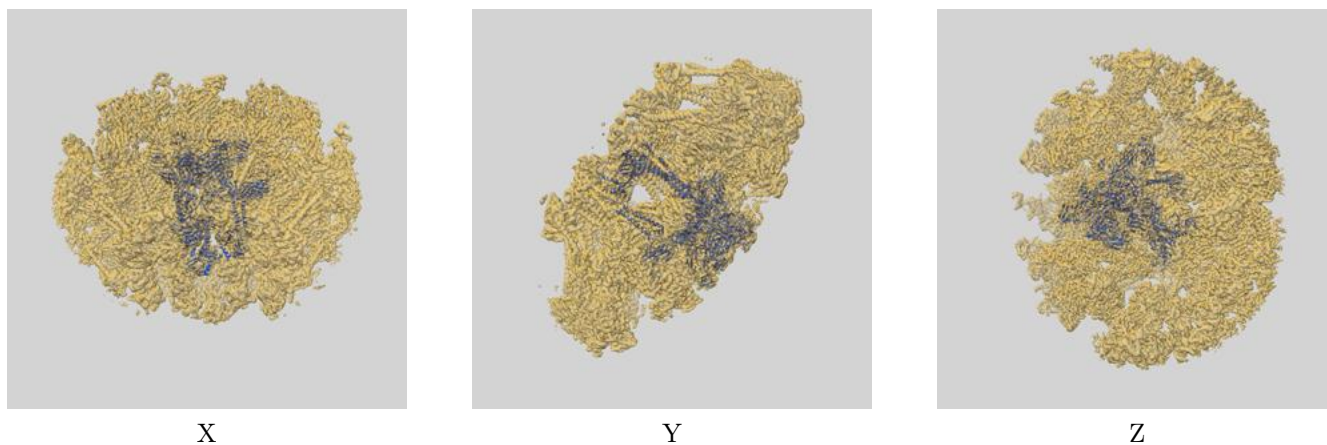
Resolution estimate (Å)	Estimation criterion (FSC cut-off)		
	0.143	0.5	Half-bit
Reported by author	3.50	-	-
Author-provided FSC curve	-	-	-
Unmasked-calculated*	3.85	4.28	3.90

\*Resolution estimate based on FSC curve calculated by comparison of deposited half-maps. The value from deposited half-maps intersecting FSC 0.143 CUT-OFF 3.85 differs from the reported value 3.5 by more than 10 %

## 9 Map-model fit [i](#)

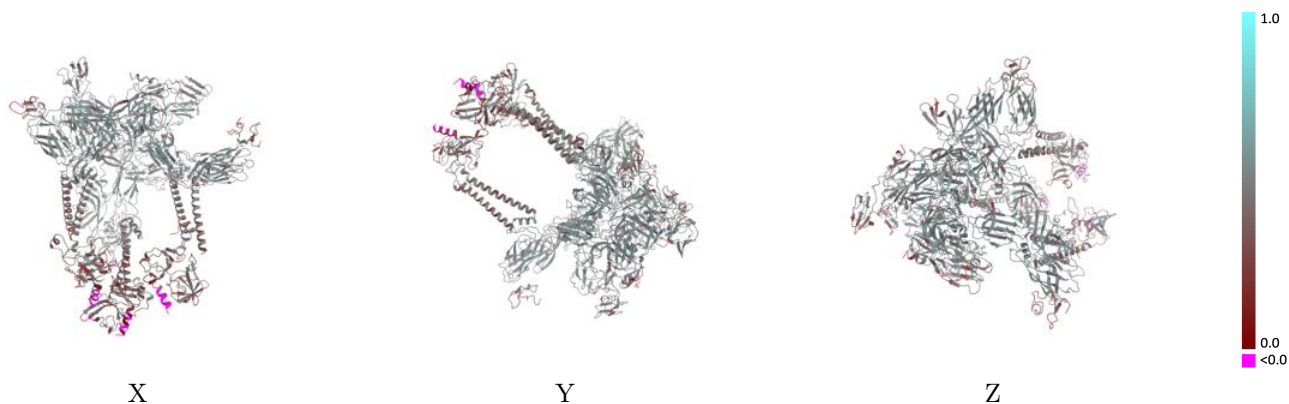
This section contains information regarding the fit between EMDB map EMD-37981 and PDB model 8X0L. Per-residue inclusion information can be found in section 3 on page 7.

### 9.1 Map-model overlay [i](#)



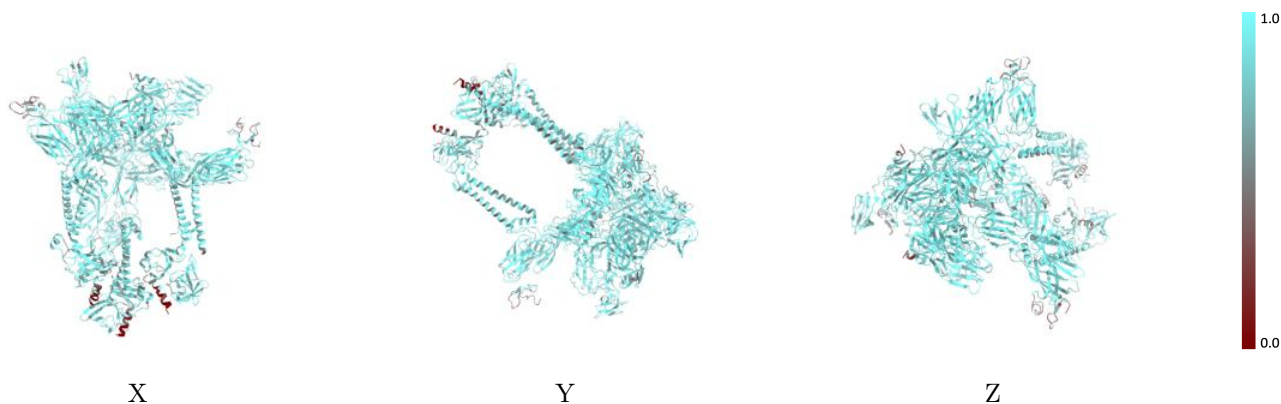
The images above show the 3D surface view of the map at the recommended contour level 0.1 at 50% transparency in yellow overlaid with a ribbon representation of the model coloured in blue. These images allow for the visual assessment of the quality of fit between the atomic model and the map.

## 9.2 Q-score mapped to coordinate model [\(i\)](#)



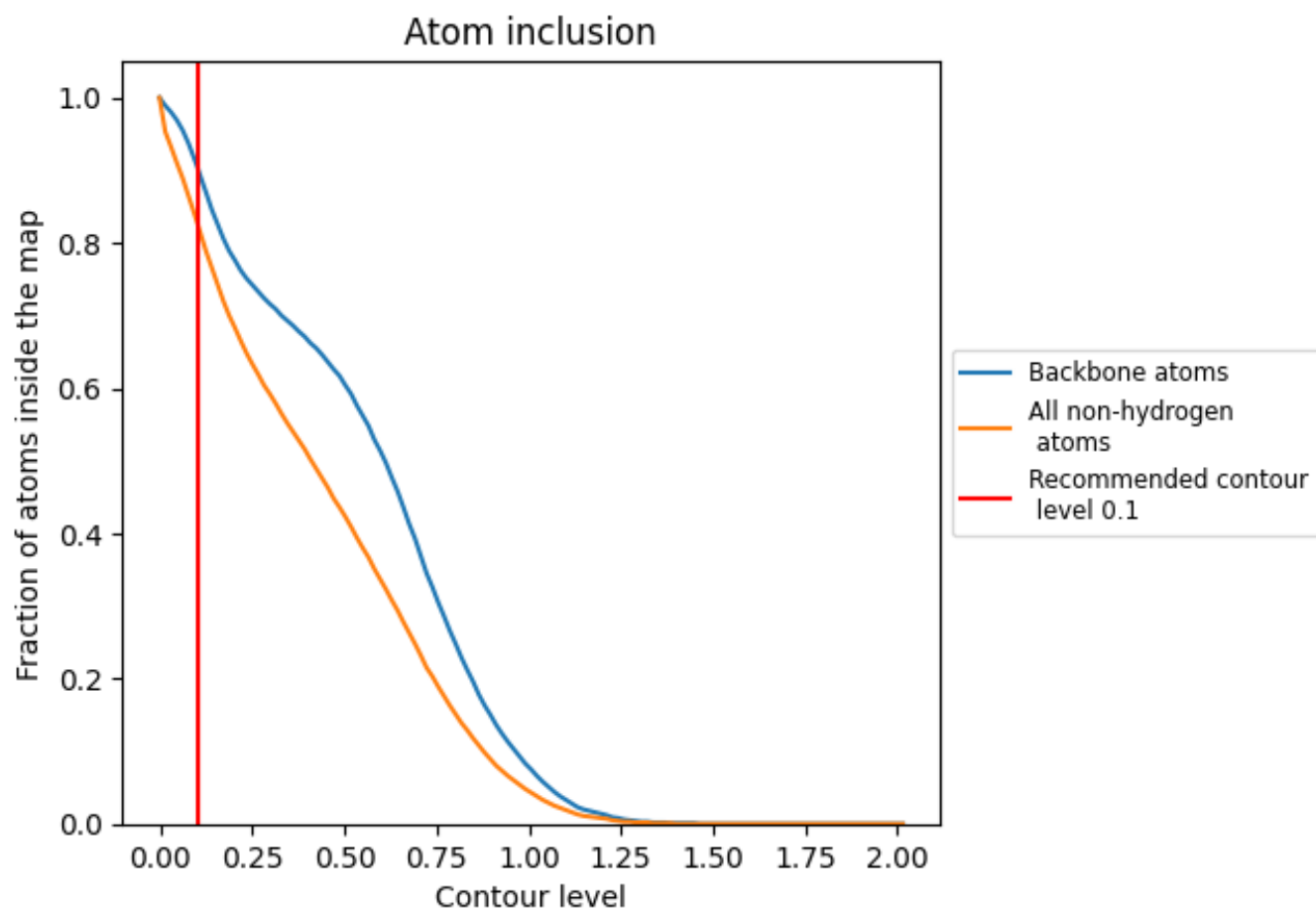
The images above show the model with each residue coloured according to its Q-score. This shows their resolvability in the map with higher Q-score values reflecting better resolvability. Please note: Q-score is calculating the resolvability of atoms, and thus high values are only expected at resolutions at which atoms can be resolved. Low Q-score values may therefore be expected for many entries.

## 9.3 Atom inclusion mapped to coordinate model [\(i\)](#)



The images above show the model with each residue coloured according to its atom inclusion. This shows to what extent they are inside the map at the recommended contour level (0.1).
































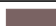






## 9.4 Atom inclusion [i](#)



At the recommended contour level, 91% of all backbone atoms, 83% of all non-hydrogen atoms, are inside the map.

## 9.5 Map-model fit summary

The table lists the average atom inclusion at the recommended contour level (0.1) and Q-score for the entire model and for each chain.

Chain	Atom inclusion	Q-score
All	 0.8290	 0.4550
A	 0.7350	 0.3320
B	 0.8560	 0.4770
C	 0.8780	 0.4940
D	 0.5220	 0.2850
E	 0.7230	 0.3240
F	 0.8470	 0.4720
G	 0.8720	 0.4970
H	 0.5330	 0.2890
I	 0.7220	 0.3380
J	 0.8530	 0.4810
K	 0.8720	 0.4940
L	 0.4820	 0.2740
M	 0.8570	 0.5020
N	 0.6430	 0.3780
O	 0.8570	 0.4670
P	 0.6430	 0.3910
Q	 0.8210	 0.5360
R	 0.6430	 0.3340

