



Full wwPDB X-ray Structure Validation Report ⓘ

Jun 18, 2024 – 05:58 PM EDT

PDB ID : 3X3F
Title : TRAIL-R2 Extracellular Region Complexed to a Fab fragment from Human Agonist Antibody KMTR2
Authors : Tamada, T.
Deposited on : 2015-01-20
Resolution : 2.10 Å (reported)

This is a Full wwPDB X-ray Structure Validation Report for a publicly released PDB entry.

We welcome your comments at validation@mail.wwpdb.org

A user guide is available at

<https://www.wwpdb.org/validation/2017/XrayValidationReportHelp>

with specific help available everywhere you see the ⓘ symbol.

The types of validation reports are described at

<http://www.wwpdb.org/validation/2017/FAQs#types>.

The following versions of software and data (see [references ⓘ](#)) were used in the production of this report:

MolProbity : 4.02b-467
Mogul : 2022.3.0, CSD as543be (2022)
Xtriage (Phenix) : 1.20.1
EDS : 2.37.1
Percentile statistics : 20191225.v01 (using entries in the PDB archive December 25th 2019)
Refmac : 5.8.0158
CCP4 : 7.0.044 (Gargrove)
Ideal geometry (proteins) : Engh & Huber (2001)
Ideal geometry (DNA, RNA) : Parkinson et al. (1996)
Validation Pipeline (wwPDB-VP) : 2.37.1

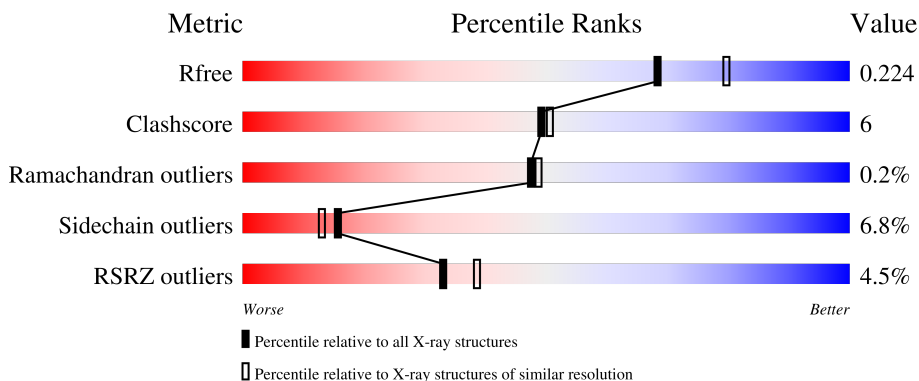
1 Overall quality at a glance

The following experimental techniques were used to determine the structure:

X-RAY DIFFRACTION

The reported resolution of this entry is 2.10 Å.

Percentile scores (ranging between 0-100) for global validation metrics of the entry are shown in the following graphic. The table shows the number of entries on which the scores are based.



Metric	Whole archive (#Entries)	Similar resolution (#Entries, resolution range(Å))
R_{free}	130704	5197 (2.10-2.10)
Clashscore	141614	5710 (2.10-2.10)
Ramachandran outliers	138981	5647 (2.10-2.10)
Sidechain outliers	138945	5648 (2.10-2.10)
RSRZ outliers	127900	5083 (2.10-2.10)

The table below summarises the geometric issues observed across the polymeric chains and their fit to the electron density. The red, orange, yellow and green segments of the lower bar indicate the fraction of residues that contain outliers for ≥ 3 , 2, 1 and 0 types of geometric quality criteria respectively. A grey segment represents the fraction of residues that are not modelled. The numeric value for each fraction is indicated below the corresponding segment, with a dot representing fractions $\leq 5\%$. The upper red bar (where present) indicates the fraction of residues that have poor fit to the electron density. The numeric value is given above the bar.

Mol	Chain	Length	Quality of chain
1	H	229	 5% 81% 14% ••
2	L	214	 2% 88% 10% •
3	A	142	 4% 39% 11% • 50%

2 Entry composition

There are 7 unique types of molecules in this entry. The entry contains 4199 atoms, of which 0 are hydrogens and 0 are deuteriums.

In the tables below, the ZeroOcc column contains the number of atoms modelled with zero occupancy, the AltConf column contains the number of residues with at least one atom in alternate conformation and the Trace column contains the number of residues modelled with at most 2 atoms.

- Molecule 1 is a protein called Heavy chain of KMTR2.

Mol	Chain	Residues	Atoms					ZeroOcc	AltConf	Trace
			Total	C	N	O	S			
1	H	222	1691	1062	280	338	11	0	0	0

- Molecule 2 is a protein called Light chain of KMTR2.

Mol	Chain	Residues	Atoms					ZeroOcc	AltConf	Trace
			Total	C	N	O	S			
2	L	214	1643	1027	279	332	5	0	0	0

- Molecule 3 is a protein called Tumor necrosis factor receptor superfamily member 10B.

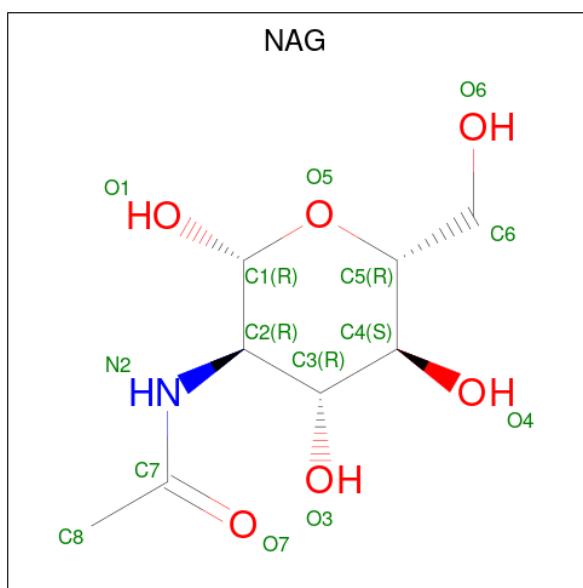
Mol	Chain	Residues	Atoms					ZeroOcc	AltConf	Trace
			Total	C	N	O	S			
3	A	71	544	326	95	114	9	0	0	0

There are 12 discrepancies between the modelled and reference sequences:

Chain	Residue	Modelled	Actual	Comment	Reference
A	67	VAL	ALA	SEE REMARK 999	UNP O14763
A	185	SER	-	expression tag	UNP O14763
A	186	ARG	-	expression tag	UNP O14763
A	187	ALA	-	expression tag	UNP O14763
A	188	ASP	-	expression tag	UNP O14763
A	189	TYR	-	expression tag	UNP O14763
A	190	LYS	-	expression tag	UNP O14763
A	191	ASP	-	expression tag	UNP O14763
A	192	ASP	-	expression tag	UNP O14763
A	193	ASP	-	expression tag	UNP O14763
A	194	ASP	-	expression tag	UNP O14763
A	195	LYS	-	expression tag	UNP O14763

- Molecule 4 is 2-acetamido-2-deoxy-beta-D-glucopyranose (three-letter code: NAG) (formula:

C₈H₁₅NO₆).

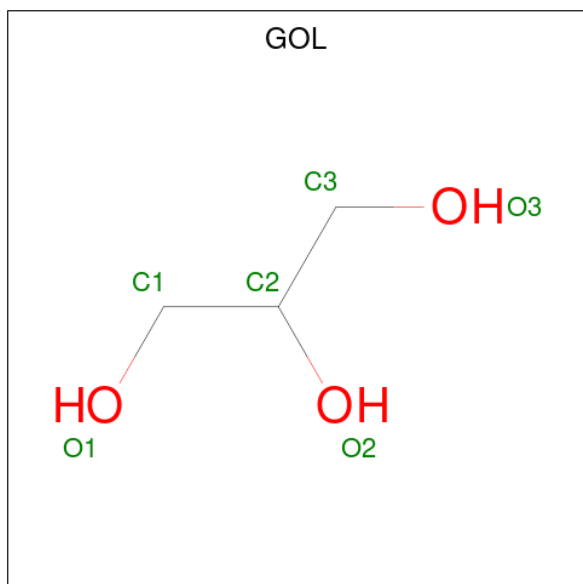


Mol	Chain	Residues	Atoms				ZeroOcc	AltConf
			Total	C	N	O		
4	H	1	14	8	1	5	0	0

- Molecule 5 is CHLORIDE ION (three-letter code: CL) (formula: Cl).

Mol	Chain	Residues	Atoms		ZeroOcc	AltConf
			Total	Cl		
5	H	1	1	1	0	0

- Molecule 6 is GLYCEROL (three-letter code: GOL) (formula: C₃H₈O₃).



Mol	Chain	Residues	Atoms			ZeroOcc	AltConf
6	L	1	Total	C	O	0	0
			6	3	3		
6	L	1	Total	C	O	0	0
			6	3	3		
6	L	1	Total	C	O	0	0
			6	3	3		
6	L	1	Total	C	O	0	0
			6	3	3		

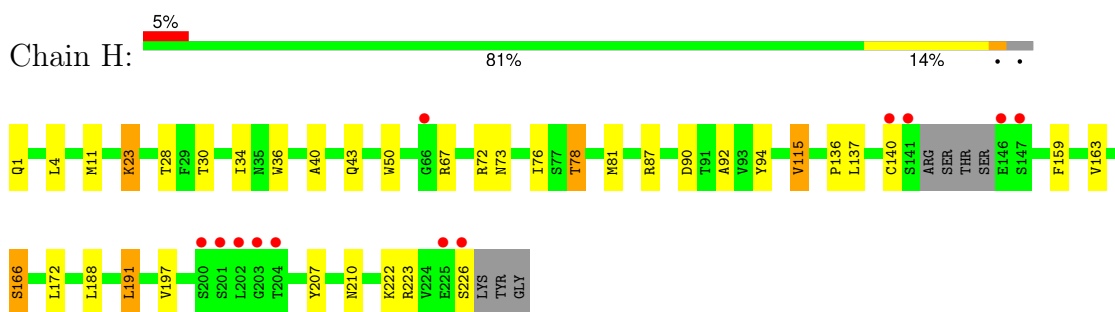
- Molecule 7 is water.

Mol	Chain	Residues	Atoms		ZeroOcc	AltConf
7	H	126	Total	O	0	0
			126	126		
7	L	114	Total	O	0	0
			114	114		
7	A	36	Total	O	0	0
			36	36		

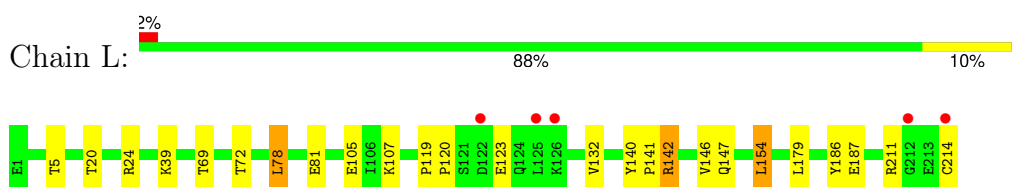
3 Residue-property plots [i](#)

These plots are drawn for all protein, RNA, DNA and oligosaccharide chains in the entry. The first graphic for a chain summarises the proportions of the various outlier classes displayed in the second graphic. The second graphic shows the sequence view annotated by issues in geometry and electron density. Residues are color-coded according to the number of geometric quality criteria for which they contain at least one outlier: green = 0, yellow = 1, orange = 2 and red = 3 or more. A red dot above a residue indicates a poor fit to the electron density ($RSRZ > 2$). Stretches of 2 or more consecutive residues without any outlier are shown as a green connector. Residues present in the sample, but not in the model, are shown in grey.

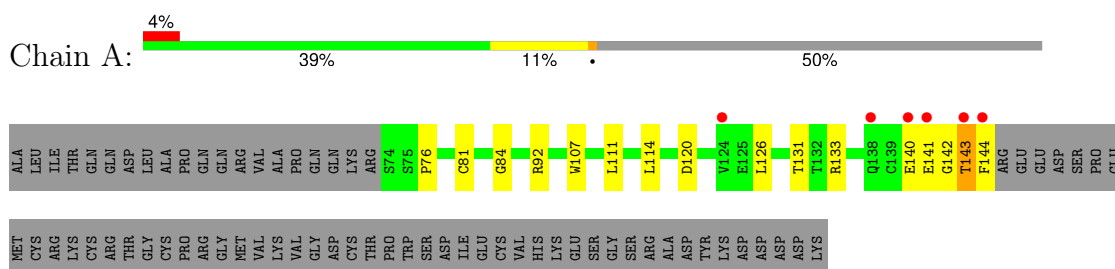
- Molecule 1: Heavy chain of KMTR2



- Molecule 2: Light chain of KMTR2



- Molecule 3: Tumor necrosis factor receptor superfamily member 10B



4 Data and refinement statistics i

Property	Value	Source
Space group	I 2 2 2	Depositor
Cell constants a, b, c, α , β , γ	144.97Å 151.56Å 65.04Å 90.00° 90.00° 90.00°	Depositor
Resolution (Å)	47.67 – 2.10 46.72 – 2.10	Depositor EDS
% Data completeness (in resolution range)	94.8 (47.67-2.10) 94.8 (46.72-2.10)	Depositor EDS
R_{merge}	(Not available)	Depositor
R_{sym}	0.08	Depositor
$\langle I/\sigma(I) \rangle$ ¹	1.72 (at 2.10Å)	Xtrriage
Refinement program	REFMAC 5.8.0049	Depositor
R, R_{free}	0.186 , 0.224 0.186 , 0.224	Depositor DCC
R_{free} test set	1994 reflections (5.00%)	wwPDB-VP
Wilson B-factor (Å ²)	25.6	Xtrriage
Anisotropy	0.134	Xtrriage
Bulk solvent k_{sol} (e/Å ³), B_{sol} (Å ²)	0.36 , 44.5	EDS
L-test for twinning ²	$\langle L \rangle = 0.47$, $\langle L^2 \rangle = 0.30$	Xtrriage
Estimated twinning fraction	0.017 for -k,-h,-l	Xtrriage
F_o, F_c correlation	0.95	EDS
Total number of atoms	4199	wwPDB-VP
Average B, all atoms (Å ²)	32.0	wwPDB-VP

Xtrriage's analysis on translational NCS is as follows: *The largest off-origin peak in the Patterson function is 4.45% of the height of the origin peak. No significant pseudotranslation is detected.*

¹Intensities estimated from amplitudes.

²Theoretical values of $\langle |L| \rangle$, $\langle L^2 \rangle$ for acentric reflections are 0.5, 0.333 respectively for untwinned datasets, and 0.375, 0.2 for perfectly twinned datasets.

5 Model quality [i](#)

5.1 Standard geometry [i](#)

Bond lengths and bond angles in the following residue types are not validated in this section: CL, NAG, GOL

The Z score for a bond length (or angle) is the number of standard deviations the observed value is removed from the expected value. A bond length (or angle) with $|Z| > 5$ is considered an outlier worth inspection. RMSZ is the root-mean-square of all Z scores of the bond lengths (or angles).

Mol	Chain	Bond lengths		Bond angles	
		RMSZ	# Z >5	RMSZ	# Z >5
1	H	0.42	0/1733	0.64	1/2359 (0.0%)
2	L	0.44	0/1679	0.64	1/2281 (0.0%)
3	A	0.40	0/556	0.68	0/754
All	All	0.43	0/3968	0.65	2/5394 (0.0%)

There are no bond length outliers.

All (2) bond angle outliers are listed below:

Mol	Chain	Res	Type	Atoms	Z	Observed($^{\circ}$)	Ideal($^{\circ}$)
1	H	191	LEU	CA-CB-CG	5.23	127.32	115.30
2	L	78	LEU	CA-CB-CG	5.14	127.11	115.30

There are no chirality outliers.

There are no planarity outliers.

5.2 Too-close contacts [i](#)

In the following table, the Non-H and H(model) columns list the number of non-hydrogen atoms and hydrogen atoms in the chain respectively. The H(added) column lists the number of hydrogen atoms added and optimized by MolProbity. The Clashes column lists the number of clashes within the asymmetric unit, whereas Symm-Clashes lists symmetry-related clashes.

Mol	Chain	Non-H	H(model)	H(added)	Clashes	Symm-Clashes
1	H	1691	0	1628	21	0
2	L	1643	0	1596	17	0
3	A	544	0	482	7	0
4	H	14	0	13	2	0
5	H	1	0	0	0	0
6	L	30	0	40	3	0

Continued on next page...

Continued from previous page...

Mol	Chain	Non-H	H(model)	H(added)	Clashes	Symm-Clashes
7	A	36	0	0	0	0
7	H	126	0	0	1	0
7	L	114	0	0	1	0
All	All	4199	0	3759	45	0

The all-atom clashscore is defined as the number of clashes found per 1000 atoms (including hydrogen atoms). The all-atom clashscore for this structure is 6.

All (45) close contacts within the same asymmetric unit are listed below, sorted by their clash magnitude.

Atom-1	Atom-2	Interatomic distance (Å)	Clash overlap (Å)
1:H:73:ASN:HD21	4:H:301:NAG:C1	1.59	1.15
2:L:147:GLN:HG2	2:L:154:LEU:HD11	1.45	0.98
1:H:11:MET:CE	1:H:159:PHE:HE1	1.79	0.94
1:H:11:MET:HE3	1:H:159:PHE:HE1	1.34	0.91
1:H:73:ASN:ND2	4:H:301:NAG:C1	2.36	0.88
1:H:11:MET:CE	1:H:159:PHE:CE1	2.61	0.83
1:H:11:MET:HE3	1:H:159:PHE:CE1	2.16	0.77
1:H:11:MET:HE1	1:H:159:PHE:CE1	2.23	0.74
2:L:147:GLN:HG2	2:L:154:LEU:CD1	2.18	0.73
1:H:23:LYS:HG2	1:H:78:THR:HG22	1.75	0.69
1:H:28:THR:HG22	1:H:30:THR:HG22	1.75	0.69
3:A:140:GLU:O	3:A:142:GLY:N	2.28	0.66
2:L:24:ARG:HD2	6:L:304:GOL:H12	1.79	0.65
3:A:143:THR:HG22	3:A:144:PHE:HB3	1.84	0.59
1:H:76:ILE:HG13	1:H:78:THR:HG23	1.85	0.57
2:L:119:PRO:HG3	2:L:214:CYS:SG	2.45	0.56
3:A:84:GLY:HA2	3:A:131:THR:O	2.07	0.55
2:L:107:LYS:HD3	7:L:468:HOH:O	2.08	0.52
1:H:136:PRO:HD3	1:H:222:LYS:HE2	1.91	0.52
1:H:40:ALA:HB3	1:H:43:GLN:HG3	1.92	0.51
2:L:5:THR:HB	6:L:304:GOL:H31	1.93	0.51
2:L:20:THR:HG23	2:L:72:THR:CG2	2.41	0.50
1:H:4:LEU:HD13	1:H:115:VAL:HG22	1.92	0.49
1:H:36:TRP:CE2	1:H:81:MET:HB2	2.48	0.49
2:L:147:GLN:CG	2:L:154:LEU:HD11	2.30	0.49
1:H:67:ARG:NH2	1:H:90:ASP:OD2	2.45	0.48
2:L:142:ARG:HG3	2:L:142:ARG:HH11	1.78	0.47
2:L:186:TYR:CZ	2:L:211:ARG:HG3	2.50	0.47
1:H:166:SER:HB3	1:H:210:ASN:HB2	1.99	0.45
2:L:20:THR:HG23	2:L:72:THR:HG23	1.98	0.45

Continued on next page...

Continued from previous page...

Atom-1	Atom-2	Interatomic distance (Å)	Clash overlap (Å)
2:L:140:TYR:CG	2:L:141:PRO:HA	2.52	0.44
3:A:140:GLU:C	3:A:142:GLY:H	2.21	0.44
1:H:28:THR:CG2	1:H:30:THR:HG22	2.46	0.44
2:L:39:LYS:NZ	2:L:81:GLU:HB2	2.32	0.43
2:L:24:ARG:HD2	6:L:304:GOL:C1	2.48	0.42
2:L:120:PRO:HD3	2:L:132:VAL:HG22	2.01	0.42
3:A:143:THR:HA	3:A:144:PHE:HA	1.87	0.42
1:H:92:ALA:HB3	1:H:94:TYR:CE1	2.55	0.42
1:H:226:SER:HB2	7:H:448:HOH:O	2.21	0.41
2:L:24:ARG:HA	2:L:69:THR:O	2.20	0.41
3:A:76:PRO:HD3	3:A:92:ARG:O	2.21	0.41
1:H:197:VAL:HG11	1:H:207:TYR:CE1	2.56	0.41
2:L:142:ARG:HG3	2:L:142:ARG:NH1	2.35	0.41
1:H:11:MET:HE1	1:H:159:PHE:CD1	2.56	0.41
3:A:81:CYS:O	3:A:107:TRP:HA	2.20	0.41

There are no symmetry-related clashes.

5.3 Torsion angles [i](#)

5.3.1 Protein backbone [i](#)

In the following table, the Percentiles column shows the percent Ramachandran outliers of the chain as a percentile score with respect to all X-ray entries followed by that with respect to entries of similar resolution.

The Analysed column shows the number of residues for which the backbone conformation was analysed, and the total number of residues.

Mol	Chain	Analysed	Favoured	Allowed	Outliers	Percentiles	
1	H	218/229 (95%)	215 (99%)	3 (1%)	0	100	100
2	L	212/214 (99%)	207 (98%)	5 (2%)	0	100	100
3	A	69/142 (49%)	66 (96%)	2 (3%)	1 (1%)	11	6
All	All	499/585 (85%)	488 (98%)	10 (2%)	1 (0%)	47	49

All (1) Ramachandran outliers are listed below:

Mol	Chain	Res	Type
3	A	141	GLU

5.3.2 Protein sidechains [i](#)

In the following table, the Percentiles column shows the percent sidechain outliers of the chain as a percentile score with respect to all X-ray entries followed by that with respect to entries of similar resolution.

The Analysed column shows the number of residues for which the sidechain conformation was analysed, and the total number of residues.

Mol	Chain	Analysed	Rotameric	Outliers	Percentiles	
1	H	191/197 (97%)	175 (92%)	16 (8%)	11	7
2	L	185/185 (100%)	177 (96%)	8 (4%)	29	29
3	A	65/128 (51%)	59 (91%)	6 (9%)	9	6
All	All	441/510 (86%)	411 (93%)	30 (7%)	16	13

All (30) residues with a non-rotameric sidechain are listed below:

Mol	Chain	Res	Type
1	H	1	GLN
1	H	23	LYS
1	H	34	ILE
1	H	50	TRP
1	H	72	ARG
1	H	78	THR
1	H	87	ARG
1	H	115	VAL
1	H	137	LEU
1	H	140	CYS
1	H	163	VAL
1	H	166	SER
1	H	172	LEU
1	H	188	LEU
1	H	191	LEU
1	H	223	ARG
2	L	78	LEU
2	L	105	GLU
2	L	123	GLU
2	L	142	ARG
2	L	146	VAL
2	L	154	LEU
2	L	179	LEU
2	L	187	GLU
3	A	111	LEU
3	A	114	LEU

Continued on next page...

Continued from previous page...

Mol	Chain	Res	Type
3	A	120	ASP
3	A	126	LEU
3	A	133	ARG
3	A	143	THR

Sometimes sidechains can be flipped to improve hydrogen bonding and reduce clashes. All (5) such sidechains are listed below:

Mol	Chain	Res	Type
1	H	31	ASN
1	H	62	GLN
1	H	73	ASN
2	L	42	GLN
3	A	138	GLN

5.3.3 RNA [i](#)

There are no RNA molecules in this entry.

5.4 Non-standard residues in protein, DNA, RNA chains [i](#)

There are no non-standard protein/DNA/RNA residues in this entry.

5.5 Carbohydrates [i](#)

There are no monosaccharides in this entry.

5.6 Ligand geometry [i](#)

Of 7 ligands modelled in this entry, 1 is monoatomic - leaving 6 for Mogul analysis.

In the following table, the Counts columns list the number of bonds (or angles) for which Mogul statistics could be retrieved, the number of bonds (or angles) that are observed in the model and the number of bonds (or angles) that are defined in the Chemical Component Dictionary. The Link column lists molecule types, if any, to which the group is linked. The Z score for a bond length (or angle) is the number of standard deviations the observed value is removed from the expected value. A bond length (or angle) with $|Z| > 2$ is considered an outlier worth inspection. RMSZ is the root-mean-square of all Z scores of the bond lengths (or angles).

Mol	Type	Chain	Res	Link	Bond lengths			Bond angles		
					Counts	RMSZ	# Z > 2	Counts	RMSZ	# Z > 2
6	GOL	L	303	-	5,5,5	0.62	0	5,5,5	0.63	0
4	NAG	H	301	-	14,14,15	0.56	0	17,19,21	2.60	5 (29%)
6	GOL	L	304	-	5,5,5	0.44	0	5,5,5	0.74	0
6	GOL	L	301	-	5,5,5	0.25	0	5,5,5	0.37	0
6	GOL	L	302	-	5,5,5	0.41	0	5,5,5	0.37	0
6	GOL	L	305	-	5,5,5	0.47	0	5,5,5	0.47	0

In the following table, the Chirals column lists the number of chiral outliers, the number of chiral centers analysed, the number of these observed in the model and the number defined in the Chemical Component Dictionary. Similar counts are reported in the Torsion and Rings columns. '-' means no outliers of that kind were identified.

Mol	Type	Chain	Res	Link	Chirals	Torsions	Rings
6	GOL	L	303	-	-	2/4/4/4	-
4	NAG	H	301	-	-	3/6/23/26	0/1/1/1
6	GOL	L	304	-	-	2/4/4/4	-
6	GOL	L	301	-	-	0/4/4/4	-
6	GOL	L	302	-	-	0/4/4/4	-
6	GOL	L	305	-	-	2/4/4/4	-

There are no bond length outliers.

All (5) bond angle outliers are listed below:

Mol	Chain	Res	Type	Atoms	Z	Observed(°)	Ideal(°)
4	H	301	NAG	C2-N2-C7	6.01	130.95	122.90
4	H	301	NAG	C1-C2-N2	5.11	118.48	110.43
4	H	301	NAG	C4-C3-C2	-4.59	104.29	111.02
4	H	301	NAG	C1-O5-C5	3.57	116.97	112.19
4	H	301	NAG	O5-C1-C2	-3.26	106.24	111.29

There are no chirality outliers.

All (9) torsion outliers are listed below:

Mol	Chain	Res	Type	Atoms
4	H	301	NAG	C1-C2-N2-C7
6	L	303	GOL	C1-C2-C3-O3
6	L	305	GOL	C1-C2-C3-O3
4	H	301	NAG	C4-C5-C6-O6
4	H	301	NAG	O5-C5-C6-O6
6	L	304	GOL	O1-C1-C2-C3

Continued on next page...

Continued from previous page...

Mol	Chain	Res	Type	Atoms
6	L	303	GOL	O2-C2-C3-O3
6	L	304	GOL	O1-C1-C2-O2
6	L	305	GOL	O2-C2-C3-O3

There are no ring outliers.

2 monomers are involved in 5 short contacts:

Mol	Chain	Res	Type	Clashes	Symm-Clashes
4	H	301	NAG	2	0
6	L	304	GOL	3	0

5.7 Other polymers [i](#)

There are no such residues in this entry.

5.8 Polymer linkage issues [i](#)

There are no chain breaks in this entry.

6 Fit of model and data

6.1 Protein, DNA and RNA chains

In the following table, the column labelled ‘#RSRZ > 2’ contains the number (and percentage) of RSRZ outliers, followed by percent RSRZ outliers for the chain as percentile scores relative to all X-ray entries and entries of similar resolution. The OWAB column contains the minimum, median, 95th percentile and maximum values of the occupancy-weighted average B-factor per residue. The column labelled ‘Q < 0.9’ lists the number of (and percentage) of residues with an average occupancy less than 0.9.

Mol	Chain	Analysed	<RSRZ>	#RSRZ>2	OWAB(Å ²)	Q<0.9
1	H	222/229 (96%)	0.16	12 (5%) 25 31	17, 29, 66, 85	0
2	L	214/214 (100%)	0.11	5 (2%) 60 65	15, 28, 54, 83	0
3	A	71/142 (50%)	0.29	6 (8%) 10 13	19, 29, 78, 97	0
All	All	507/585 (86%)	0.16	23 (4%) 33 38	15, 29, 61, 97	0

All (23) RSRZ outliers are listed below:

Mol	Chain	Res	Type	RSRZ
3	A	143	THR	5.8
1	H	204	THR	5.7
1	H	226	SER	5.7
3	A	144	PHE	5.4
2	L	212	GLY	4.8
1	H	141	SER	4.6
2	L	214	CYS	4.3
1	H	225	GLU	3.4
1	H	202	LEU	3.3
3	A	141	GLU	3.2
1	H	140	CYS	3.2
1	H	200	SER	3.1
1	H	201	SER	2.9
3	A	124	VAL	2.8
3	A	140	GLU	2.6
1	H	203	GLY	2.5
1	H	66	GLY	2.5
1	H	146	GLU	2.5
2	L	122	ASP	2.3
1	H	147	SER	2.2
2	L	125	LEU	2.2
3	A	138	GLN	2.2
2	L	126	LYS	2.1

6.2 Non-standard residues in protein, DNA, RNA chains [i](#)

There are no non-standard protein/DNA/RNA residues in this entry.

6.3 Carbohydrates [i](#)

There are no monosaccharides in this entry.

6.4 Ligands [i](#)

In the following table, the Atoms column lists the number of modelled atoms in the group and the number defined in the chemical component dictionary. The B-factors column lists the minimum, median, 95th percentile and maximum values of B factors of atoms in the group. The column labelled 'Q< 0.9' lists the number of atoms with occupancy less than 0.9.

Mol	Type	Chain	Res	Atoms	RSCC	RSR	B-factors(Å ²)	Q<0.9
4	NAG	H	301	14/15	0.68	0.20	55,66,69,70	0
6	GOL	L	302	6/6	0.71	0.24	56,58,59,62	0
6	GOL	L	303	6/6	0.75	0.27	46,48,51,52	0
6	GOL	L	304	6/6	0.76	0.34	54,57,59,63	0
6	GOL	L	305	6/6	0.85	0.28	42,51,54,56	0
6	GOL	L	301	6/6	0.93	0.22	45,47,49,52	0
5	CL	H	302	1/1	0.99	0.08	20,20,20,20	0

6.5 Other polymers [i](#)

There are no such residues in this entry.