



# Full wwPDB X-ray Structure Validation Report ⓘ

Jun 18, 2024 – 06:05 PM EDT

PDB ID : 3X3G  
Title : Fab fragment from anti TRAIL-R2 Human Agonist Antibody KMTR2  
Authors : Tamada, T.  
Deposited on : 2015-01-20  
Resolution : 2.51 Å(reported)

This is a Full wwPDB X-ray Structure Validation Report for a publicly released PDB entry.

We welcome your comments at [validation@mail.wwpdb.org](mailto:validation@mail.wwpdb.org)

A user guide is available at

<https://www.wwpdb.org/validation/2017/XrayValidationReportHelp>

with specific help available everywhere you see the ⓘ symbol.

The types of validation reports are described at

<http://www.wwpdb.org/validation/2017/FAQs#types>.

---

The following versions of software and data (see [references ⓘ](#)) were used in the production of this report:

MolProbity : 4.02b-467  
Mogul : 2022.3.0, CSD as543be (2022)  
Xtriage (Phenix) : 1.20.1  
EDS : 2.37.1  
Percentile statistics : 20191225.v01 (using entries in the PDB archive December 25th 2019)  
Refmac : 5.8.0158  
CCP4 : 7.0.044 (Gargrove)  
Ideal geometry (proteins) : Engh & Huber (2001)  
Ideal geometry (DNA, RNA) : Parkinson et al. (1996)  
Validation Pipeline (wwPDB-VP) : 2.37.1

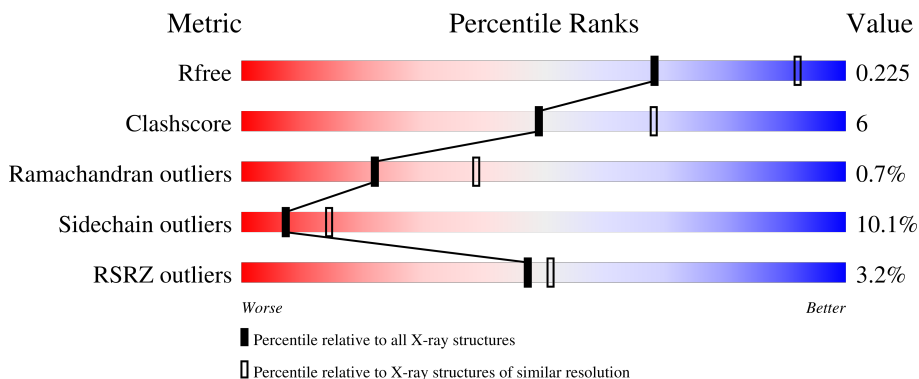
# 1 Overall quality at a glance

The following experimental techniques were used to determine the structure:

*X-RAY DIFFRACTION*

The reported resolution of this entry is 2.51 Å.

Percentile scores (ranging between 0-100) for global validation metrics of the entry are shown in the following graphic. The table shows the number of entries on which the scores are based.



Metric	Whole archive (#Entries)	Similar resolution (#Entries, resolution range(Å))
$R_{free}$	130704	4661 (2.50-2.50)
Clashscore	141614	5346 (2.50-2.50)
Ramachandran outliers	138981	5231 (2.50-2.50)
Sidechain outliers	138945	5233 (2.50-2.50)
RSRZ outliers	127900	4559 (2.50-2.50)

The table below summarises the geometric issues observed across the polymeric chains and their fit to the electron density. The red, orange, yellow and green segments of the lower bar indicate the fraction of residues that contain outliers for  $\geq 3$ , 2, 1 and 0 types of geometric quality criteria respectively. A grey segment represents the fraction of residues that are not modelled. The numeric value for each fraction is indicated below the corresponding segment, with a dot representing fractions  $\leq 5\%$ . The upper red bar (where present) indicates the fraction of residues that have poor fit to the electron density. The numeric value is given above the bar.

Mol	Chain	Length	Quality of chain
1	H	229	 3% 82% 14%
2	L	214	 3% 80% 16%

## 2 Entry composition [i](#)

There are 6 unique types of molecules in this entry. The entry contains 3424 atoms, of which 0 are hydrogens and 0 are deuteriums.

In the tables below, the ZeroOcc column contains the number of atoms modelled with zero occupancy, the AltConf column contains the number of residues with at least one atom in alternate conformation and the Trace column contains the number of residues modelled with at most 2 atoms.

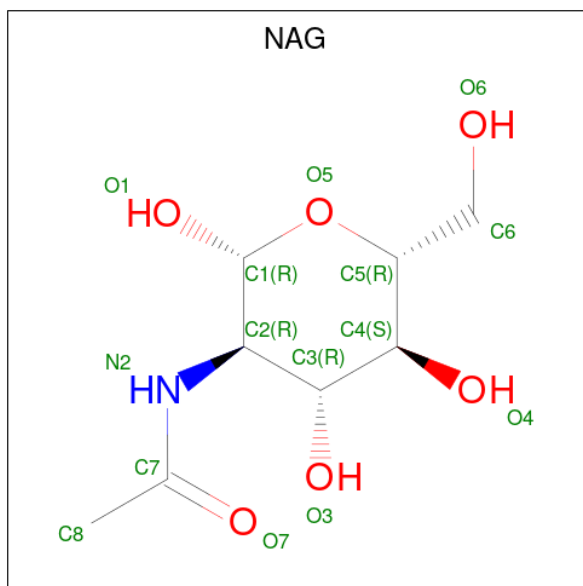
- Molecule 1 is a protein called Heavy chain of KMTR2.

Mol	Chain	Residues	Atoms					ZeroOcc	AltConf	Trace
			Total	C	N	O	S			
1	H	224	1706	1070	285	340	11	0	0	0

- Molecule 2 is a protein called Light chain of KMTR2.

Mol	Chain	Residues	Atoms					ZeroOcc	AltConf	Trace
			Total	C	N	O	S			
2	L	214	1649	1031	279	334	5	0	1	0

- Molecule 3 is 2-acetamido-2-deoxy-beta-D-glucopyranose (three-letter code: NAG) (formula:  $C_8H_{15}NO_6$ ).

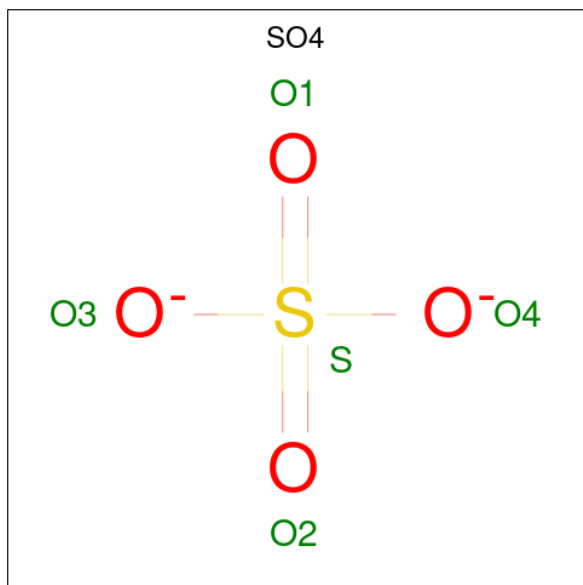


Mol	Chain	Residues	Atoms				ZeroOcc	AltConf
			Total	C	N	O		
3	H	1	14	8	1	5	0	0

- Molecule 4 is CHLORIDE ION (three-letter code: CL) (formula: Cl).

Mol	Chain	Residues	Atoms	ZeroOcc	AltConf
4	H	1	Total Cl 1 1	0	0
4	L	2	Total Cl 2 2	0	0

- Molecule 5 is SULFATE ION (three-letter code: SO4) (formula: O<sub>4</sub>S).



Mol	Chain	Residues	Atoms	ZeroOcc	AltConf
5	H	1	Total O S 5 4 1	0	0
5	H	1	Total O S 5 4 1	0	0

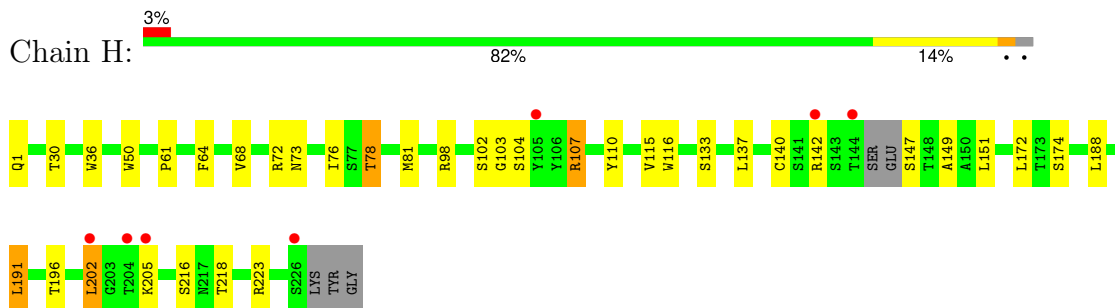
- Molecule 6 is water.

Mol	Chain	Residues	Atoms	ZeroOcc	AltConf
6	H	29	Total O 29 29	0	0
6	L	13	Total O 13 13	0	0

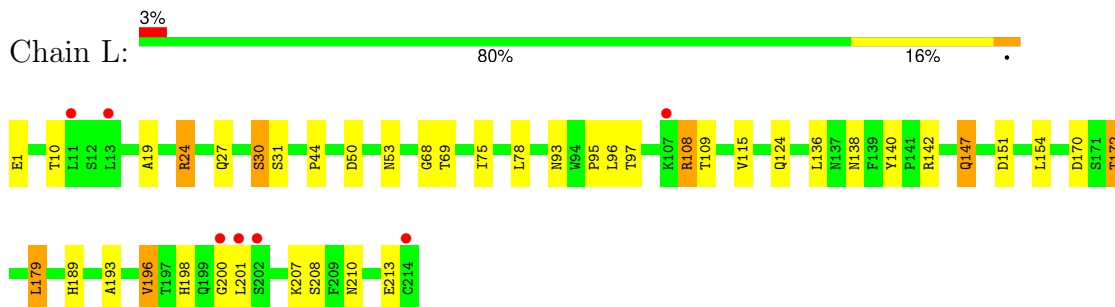
### 3 Residue-property plots [i](#)

These plots are drawn for all protein, RNA, DNA and oligosaccharide chains in the entry. The first graphic for a chain summarises the proportions of the various outlier classes displayed in the second graphic. The second graphic shows the sequence view annotated by issues in geometry and electron density. Residues are color-coded according to the number of geometric quality criteria for which they contain at least one outlier: green = 0, yellow = 1, orange = 2 and red = 3 or more. A red dot above a residue indicates a poor fit to the electron density ( $RSRZ > 2$ ). Stretches of 2 or more consecutive residues without any outlier are shown as a green connector. Residues present in the sample, but not in the model, are shown in grey.

- Molecule 1: Heavy chain of KMTR2



- Molecule 2: Light chain of KMTR2



## 4 Data and refinement statistics

Property	Value	Source
Space group	C 2 2 21	Depositor
Cell constants a, b, c, $\alpha$ , $\beta$ , $\gamma$	153.00Å 165.38Å 65.30Å 90.00° 90.00° 90.00°	Depositor
Resolution (Å)	38.25 – 2.51 38.25 – 2.51	Depositor EDS
% Data completeness (in resolution range)	95.0 (38.25-2.51) 95.1 (38.25-2.51)	Depositor EDS
$R_{merge}$	(Not available)	Depositor
$R_{sym}$	0.06	Depositor
$\langle I/\sigma(I) \rangle$ <sup>1</sup>	3.32 (at 2.51Å)	Xtrriage
Refinement program	REFMAC 5.8.0049	Depositor
R, $R_{free}$	0.186 , 0.224 0.186 , 0.225	Depositor DCC
$R_{free}$ test set	1382 reflections (5.05%)	wwPDB-VP
Wilson B-factor (Å <sup>2</sup> )	63.8	Xtrriage
Anisotropy	0.291	Xtrriage
Bulk solvent $k_{sol}$ (e/Å <sup>3</sup> ), $B_{sol}$ (Å <sup>2</sup> )	0.33 , 45.9	EDS
L-test for twinning <sup>2</sup>	$\langle  L  \rangle = 0.47$ , $\langle L^2 \rangle = 0.30$	Xtrriage
Estimated twinning fraction	No twinning to report.	Xtrriage
$F_o, F_c$ correlation	0.96	EDS
Total number of atoms	3424	wwPDB-VP
Average B, all atoms (Å <sup>2</sup> )	78.0	wwPDB-VP

Xtrriage's analysis on translational NCS is as follows: *The largest off-origin peak in the Patterson function is 4.50% of the height of the origin peak. No significant pseudotranslation is detected.*

<sup>1</sup>Intensities estimated from amplitudes.

<sup>2</sup>Theoretical values of  $\langle |L| \rangle$ ,  $\langle L^2 \rangle$  for acentric reflections are 0.5, 0.333 respectively for untwinned datasets, and 0.375, 0.2 for perfectly twinned datasets.

## 5 Model quality [i](#)

### 5.1 Standard geometry [i](#)

Bond lengths and bond angles in the following residue types are not validated in this section: NAG, CL, SO4

The Z score for a bond length (or angle) is the number of standard deviations the observed value is removed from the expected value. A bond length (or angle) with  $|Z| > 5$  is considered an outlier worth inspection. RMSZ is the root-mean-square of all Z scores of the bond lengths (or angles).

Mol	Chain	Bond lengths		Bond angles	
		RMSZ	# Z  >5	RMSZ	# Z  >5
1	H	0.65	0/1748	0.83	1/2379 (0.0%)
2	L	0.58	0/1688	0.75	1/2294 (0.0%)
All	All	0.62	0/3436	0.79	2/4673 (0.0%)

There are no bond length outliers.

All (2) bond angle outliers are listed below:

Mol	Chain	Res	Type	Atoms	Z	Observed(°)	Ideal(°)
2	L	179	LEU	CA-CB-CG	5.97	129.04	115.30
1	H	191	LEU	CA-CB-CG	5.63	128.25	115.30

There are no chirality outliers.

There are no planarity outliers.

### 5.2 Too-close contacts [i](#)

In the following table, the Non-H and H(model) columns list the number of non-hydrogen atoms and hydrogen atoms in the chain respectively. The H(added) column lists the number of hydrogen atoms added and optimized by MolProbity. The Clashes column lists the number of clashes within the asymmetric unit, whereas Symm-Clashes lists symmetry-related clashes.

Mol	Chain	Non-H	H(model)	H(added)	Clashes	Symm-Clashes
1	H	1706	0	1647	19	0
2	L	1649	0	1602	22	0
3	H	14	0	13	4	0
4	H	1	0	0	0	0
4	L	2	0	0	0	0
5	H	10	0	0	0	0
6	H	29	0	0	0	0

*Continued on next page...*

*Continued from previous page...*

Mol	Chain	Non-H	H(model)	H(added)	Clashes	Symm-Clashes
6	L	13	0	0	0	0
All	All	3424	0	3262	39	0

The all-atom clashscore is defined as the number of clashes found per 1000 atoms (including hydrogen atoms). The all-atom clashscore for this structure is 6.

All (39) close contacts within the same asymmetric unit are listed below, sorted by their clash magnitude.

Atom-1	Atom-2	Interatomic distance (Å)	Clash overlap (Å)
1:H:73:ASN:HD21	3:H:301:NAG:C1	1.71	1.02
1:H:73:ASN:ND2	3:H:301:NAG:C1	2.34	0.90
2:L:170:ASP:OD1	2:L:172:THR:HB	1.93	0.67
2:L:24:ARG:CG	2:L:24:ARG:HH11	2.10	0.65
1:H:76:ILE:HG13	1:H:78:THR:HG23	1.79	0.64
1:H:107:ARG:CG	1:H:107:ARG:HH21	2.10	0.64
2:L:24:ARG:HH11	2:L:24:ARG:HG3	1.64	0.61
2:L:108:ARG:NH1	2:L:109:THR:O	2.34	0.57
1:H:149:ALA:HB3	1:H:202:LEU:HD11	1.89	0.55
1:H:64:PHE:HB3	1:H:68:VAL:HG23	1.88	0.55
1:H:61:PRO:HB3	2:L:95:PRO:HB3	1.89	0.54
1:H:73:ASN:HD21	3:H:301:NAG:C2	2.21	0.53
1:H:73:ASN:ND2	3:H:301:NAG:N2	2.56	0.53
2:L:24:ARG:CG	2:L:24:ARG:NH1	2.72	0.52
1:H:76:ILE:O	1:H:78:THR:HG22	2.10	0.51
1:H:107:ARG:HH21	1:H:107:ARG:HG2	1.76	0.50
1:H:107:ARG:HA	1:H:110:TYR:HB3	1.96	0.47
2:L:151:ASP:OD2	2:L:189:HIS:HB3	2.14	0.46
2:L:138:ASN:HA	2:L:172:THR:CG2	2.45	0.46
1:H:107:ARG:HG2	1:H:107:ARG:NH2	2.30	0.45
1:H:36:TRP:CE2	1:H:81:MET:HB2	2.51	0.45
2:L:136:LEU:HD11	2:L:196:VAL:HG11	1.99	0.45
1:H:1:GLN:HE21	1:H:1:GLN:HB3	1.49	0.44
1:H:116:TRP:CE3	2:L:44:PRO:HD2	2.51	0.44
2:L:198:HIS:CD2	2:L:200:GLY:H	2.35	0.44
1:H:76:ILE:O	1:H:78:THR:CG2	2.66	0.44
2:L:50:ASP:HB3	2:L:53:ASN:HD22	1.82	0.44
2:L:147:GLN:HG2	2:L:154:LEU:HD13	2.00	0.44
2:L:193:ALA:HB2	2:L:208:SER:HB3	2.00	0.44
1:H:64:PHE:HB3	1:H:68:VAL:CG2	2.49	0.42
2:L:108:ARG:HD2	2:L:140:TYR:CG	2.54	0.42
2:L:124:GLN:O	2:L:124:GLN:HG2	2.19	0.42

*Continued on next page...*



Continued from previous page...

Atom-1	Atom-2	Interatomic distance (Å)	Clash overlap (Å)
2:L:19:ALA:HB3	2:L:75:ILE:HB	2.01	0.41
2:L:30:SER:HB3	2:L:31:SER:H	1.66	0.41
1:H:216:SER:OG	1:H:218:THR:HG23	2.20	0.41
2:L:147:GLN:HG2	2:L:154:LEU:CD1	2.50	0.41
2:L:210:ASN:HB2	2:L:213:GLU:HB3	2.03	0.41
2:L:75:ILE:HG21	2:L:78:LEU:HD12	2.03	0.41
2:L:115:VAL:HG12	2:L:207:LYS:HG3	2.03	0.40

There are no symmetry-related clashes.

## 5.3 Torsion angles [i](#)

### 5.3.1 Protein backbone [i](#)

In the following table, the Percentiles column shows the percent Ramachandran outliers of the chain as a percentile score with respect to all X-ray entries followed by that with respect to entries of similar resolution.

The Analysed column shows the number of residues for which the backbone conformation was analysed, and the total number of residues.

Mol	Chain	Analysed	Favoured	Allowed	Outliers	Percentiles	
1	H	220/229 (96%)	208 (94%)	10 (4%)	2 (1%)	17	31
2	L	213/214 (100%)	206 (97%)	6 (3%)	1 (0%)	29	48
All	All	433/443 (98%)	414 (96%)	16 (4%)	3 (1%)	22	39

All (3) Ramachandran outliers are listed below:

Mol	Chain	Res	Type
1	H	104	SER
2	L	68	GLY
1	H	103	GLY

### 5.3.2 Protein sidechains [i](#)

In the following table, the Percentiles column shows the percent sidechain outliers of the chain as a percentile score with respect to all X-ray entries followed by that with respect to entries of similar resolution.

The Analysed column shows the number of residues for which the sidechain conformation was

analysed, and the total number of residues.

Mol	Chain	Analysed	Rotameric	Outliers	Percentiles	
1	H	193/197 (98%)	171 (89%)	22 (11%)	5	11
2	L	186/185 (100%)	170 (91%)	16 (9%)	10	20
All	All	379/382 (99%)	341 (90%)	38 (10%)	7	15

All (38) residues with a non-rotameric sidechain are listed below:

Mol	Chain	Res	Type
1	H	30	THR
1	H	50	TRP
1	H	72	ARG
1	H	78	THR
1	H	98	ARG
1	H	102	SER
1	H	107	ARG
1	H	115	VAL
1	H	133	SER
1	H	137	LEU
1	H	140	CYS
1	H	142	ARG
1	H	147	SER
1	H	151	LEU
1	H	172	LEU
1	H	174	SER
1	H	188	LEU
1	H	191	LEU
1	H	196	THR
1	H	202	LEU
1	H	205	LYS
1	H	223	ARG
2	L	1	GLU
2	L	10	THR
2	L	24	ARG
2	L	27	GLN
2	L	30	SER
2	L	69	THR
2	L	93	ASN
2	L	96	LEU
2	L	97	THR
2	L	108	ARG
2	L	142	ARG
2	L	147	GLN

*Continued on next page...*

*Continued from previous page...*

Mol	Chain	Res	Type
2	L	172	THR
2	L	179	LEU
2	L	196	VAL
2	L	201	LEU

Sometimes sidechains can be flipped to improve hydrogen bonding and reduce clashes. All (9) such sidechains are listed below:

Mol	Chain	Res	Type
1	H	1	GLN
1	H	31	ASN
1	H	73	ASN
1	H	177	HIS
2	L	42	GLN
2	L	53	ASN
2	L	93	ASN
2	L	137	ASN
2	L	198	HIS

### 5.3.3 RNA [i](#)

There are no RNA molecules in this entry.

### 5.4 Non-standard residues in protein, DNA, RNA chains [i](#)

There are no non-standard protein/DNA/RNA residues in this entry.

### 5.5 Carbohydrates [i](#)

There are no monosaccharides in this entry.

### 5.6 Ligand geometry [i](#)

Of 6 ligands modelled in this entry, 3 are monoatomic - leaving 3 for Mogul analysis.

In the following table, the Counts columns list the number of bonds (or angles) for which Mogul statistics could be retrieved, the number of bonds (or angles) that are observed in the model and the number of bonds (or angles) that are defined in the Chemical Component Dictionary. The Link column lists molecule types, if any, to which the group is linked. The Z score for a bond length (or angle) is the number of standard deviations the observed value is removed from the

expected value. A bond length (or angle) with  $|Z| > 2$  is considered an outlier worth inspection. RMSZ is the root-mean-square of all Z scores of the bond lengths (or angles).

Mol	Type	Chain	Res	Link	Bond lengths			Bond angles		
					Counts	RMSZ	# Z  > 2	Counts	RMSZ	# Z  > 2
5	SO4	H	304	-	4,4,4	0.74	0	6,6,6	1.13	0
3	NAG	H	301	-	14,14,15	0.90	1 (7%)	17,19,21	2.18	9 (52%)
5	SO4	H	303	-	4,4,4	0.46	0	6,6,6	1.10	0

In the following table, the Chirals column lists the number of chiral outliers, the number of chiral centers analysed, the number of these observed in the model and the number defined in the Chemical Component Dictionary. Similar counts are reported in the Torsion and Rings columns. '2' means no outliers of that kind were identified.

Mol	Type	Chain	Res	Link	Chirals	Torsions	Rings
3	NAG	H	301	-	-	4/6/23/26	0/1/1/1

All (1) bond length outliers are listed below:

Mol	Chain	Res	Type	Atoms	Z	Observed(Å)	Ideal(Å)
3	H	301	NAG	C4-C5	2.25	1.57	1.53

All (9) bond angle outliers are listed below:

Mol	Chain	Res	Type	Atoms	Z	Observed(°)	Ideal(°)
3	H	301	NAG	C1-C2-N2	3.61	116.11	110.43
3	H	301	NAG	C8-C7-N2	3.45	121.85	116.12
3	H	301	NAG	C2-N2-C7	3.02	126.95	122.90
3	H	301	NAG	O7-C7-C8	-3.02	116.67	122.05
3	H	301	NAG	O4-C4-C5	3.02	116.75	109.32
3	H	301	NAG	O5-C1-C2	-2.45	107.50	111.29
3	H	301	NAG	O6-C6-C5	2.36	119.38	111.33
3	H	301	NAG	C1-O5-C5	2.22	115.16	112.19
3	H	301	NAG	O5-C5-C6	2.13	111.82	107.66

There are no chirality outliers.

All (4) torsion outliers are listed below:

Mol	Chain	Res	Type	Atoms
3	H	301	NAG	O5-C5-C6-O6
3	H	301	NAG	C4-C5-C6-O6
3	H	301	NAG	C8-C7-N2-C2
3	H	301	NAG	O7-C7-N2-C2

There are no ring outliers.

1 monomer is involved in 4 short contacts:

Mol	Chain	Res	Type	Clashes	Symm-Clashes
3	H	301	NAG	4	0

## 5.7 Other polymers [i](#)

There are no such residues in this entry.

## 5.8 Polymer linkage issues [i](#)

There are no chain breaks in this entry.

## 6 Fit of model and data [i](#)

### 6.1 Protein, DNA and RNA chains [i](#)

In the following table, the column labelled ‘#RSRZ> 2’ contains the number (and percentage) of RSRZ outliers, followed by percent RSRZ outliers for the chain as percentile scores relative to all X-ray entries and entries of similar resolution. The OWAB column contains the minimum, median, 95<sup>th</sup> percentile and maximum values of the occupancy-weighted average B-factor per residue. The column labelled ‘Q< 0.9’ lists the number of (and percentage) of residues with an average occupancy less than 0.9.

Mol	Chain	Analysed	<RSRZ>	#RSRZ>2	OWAB(Å <sup>2</sup> )	Q<0.9
1	H	224/229 (97%)	0.22	7 (3%) 49 52	47, 69, 131, 179	0
2	L	214/214 (100%)	0.16	7 (3%) 46 50	50, 81, 114, 145	0
All	All	438/443 (98%)	0.19	14 (3%) 47 51	47, 75, 123, 179	0

All (14) RSRZ outliers are listed below:

Mol	Chain	Res	Type	RSRZ
1	H	144	THR	7.5
2	L	200	GLY	4.0
1	H	204	THR	3.9
2	L	201	LEU	3.5
1	H	202	LEU	3.4
2	L	214	CYS	3.3
1	H	142	ARG	3.1
2	L	11	LEU	2.9
1	H	105	TYR	2.7
2	L	202	SER	2.6
2	L	107	LYS	2.4
1	H	226	SER	2.4
1	H	205	LYS	2.2
2	L	13	LEU	2.1

### 6.2 Non-standard residues in protein, DNA, RNA chains [i](#)

There are no non-standard protein/DNA/RNA residues in this entry.

### 6.3 Carbohydrates [i](#)

There are no monosaccharides in this entry.

## 6.4 Ligands [i](#)

In the following table, the Atoms column lists the number of modelled atoms in the group and the number defined in the chemical component dictionary. The B-factors column lists the minimum, median, 95<sup>th</sup> percentile and maximum values of B factors of atoms in the group. The column labelled 'Q< 0.9' lists the number of atoms with occupancy less than 0.9.

Mol	Type	Chain	Res	Atoms	RSCC	RSR	B-factors(Å <sup>2</sup> )	Q<0.9
3	NAG	H	301	14/15	0.80	0.21	75,98,112,114	0
4	CL	L	301	1/1	0.85	0.05	97,97,97,97	0
4	CL	H	302	1/1	0.95	0.14	79,79,79,79	0
4	CL	L	302	1/1	0.95	0.19	82,82,82,82	0
5	SO4	H	304	5/5	0.96	0.22	64,65,80,81	5
5	SO4	H	303	5/5	0.99	0.26	57,64,78,90	0

## 6.5 Other polymers [i](#)

There are no such residues in this entry.