



Full wwPDB X-ray Structure Validation Report ⓘ

Jun 15, 2020 – 08:22 am BST

PDB ID : 4X6X
Title : Human soluble epoxide hydrolase in complex with a three substituted cyclopropane derivative
Authors : Chiyo, N.; Takai, K.; Ishii, T.
Deposited on : 2014-12-09
Resolution : 1.80 Å(reported)

This is a Full wwPDB X-ray Structure Validation Report for a publicly released PDB entry.

We welcome your comments at validation@mail.wwpdb.org

A user guide is available at

<https://www.wwpdb.org/validation/2017/XrayValidationReportHelp>

with specific help available everywhere you see the ⓘ symbol.

The following versions of software and data (see [references ⓘ](#)) were used in the production of this report:

MolProbity : 4.02b-467
Mogul : 1.8.5 (274361), CSD as541be (2020)
Xtriage (Phenix) : 1.13
EDS : 2.11
buster-report : 1.1.7 (2018)
Percentile statistics : 20191225.v01 (using entries in the PDB archive December 25th 2019)
Refmac : 5.8.0158
CCP4 : 7.0.044 (Gargrove)
Ideal geometry (proteins) : Engh & Huber (2001)
Ideal geometry (DNA, RNA) : Parkinson et al. (1996)
Validation Pipeline (wwPDB-VP) : 2.11

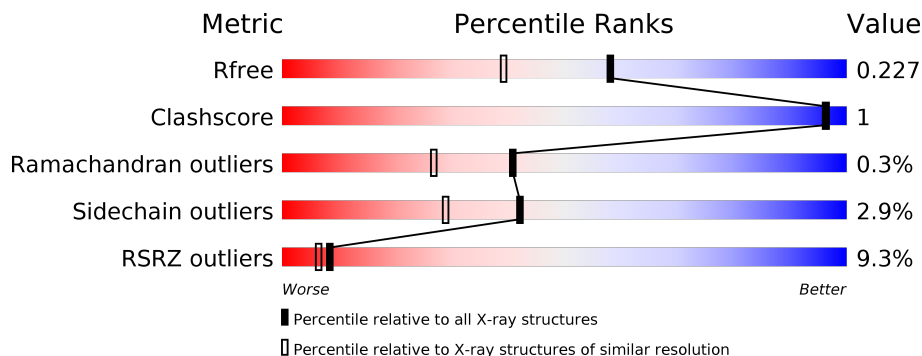
1 Overall quality at a glance i

The following experimental techniques were used to determine the structure:

X-RAY DIFFRACTION

The reported resolution of this entry is 1.80 Å.

Percentile scores (ranging between 0-100) for global validation metrics of the entry are shown in the following graphic. The table shows the number of entries on which the scores are based.



Metric	Whole archive (#Entries)	Similar resolution (#Entries, resolution range(Å))
R_{free}	130704	5950 (1.80-1.80)
Clashscore	141614	6793 (1.80-1.80)
Ramachandran outliers	138981	6697 (1.80-1.80)
Sidechain outliers	138945	6696 (1.80-1.80)
RSRZ outliers	127900	5850 (1.80-1.80)

The table below summarises the geometric issues observed across the polymeric chains and their fit to the electron density. The red, orange, yellow and green segments on the lower bar indicate the fraction of residues that contain outliers for ≥ 3 , 2, 1 and 0 types of geometric quality criteria respectively. A grey segment represents the fraction of residues that are not modelled. The numeric value for each fraction is indicated below the corresponding segment, with a dot representing fractions $\leq 5\%$. The upper red bar (where present) indicates the fraction of residues that have poor fit to the electron density. The numeric value is given above the bar.

Mol	Chain	Length	Quality of chain
1	A	336	<div style="display: flex; align-items: center;"> <div style="width: 9%; height: 10px; background-color: red; margin-right: 5px;"></div> <div style="width: 89%; height: 10px; background-color: green; margin-right: 5px;"></div> <div style="width: 5%; height: 10px; background-color: yellow; margin-right: 5px;"></div> <div style="width: 6%; height: 10px; background-color: grey;"></div> </div> <p style="font-size: small; margin-top: 5px;">9% 89% 5% • 6%</p>
1	B	336	<div style="display: flex; align-items: center;"> <div style="width: 9%; height: 10px; background-color: red; margin-right: 5px;"></div> <div style="width: 89%; height: 10px; background-color: green; margin-right: 5px;"></div> <div style="width: 5%; height: 10px; background-color: yellow; margin-right: 5px;"></div> <div style="width: 6%; height: 10px; background-color: grey;"></div> </div> <p style="font-size: small; margin-top: 5px;">9% 89% • • 6%</p>

2 Entry composition i

There are 3 unique types of molecules in this entry. The entry contains 5355 atoms, of which 0 are hydrogens and 0 are deuteriums.

In the tables below, the ZeroOcc column contains the number of atoms modelled with zero occupancy, the AltConf column contains the number of residues with at least one atom in alternate conformation and the Trace column contains the number of residues modelled with at most 2 atoms.

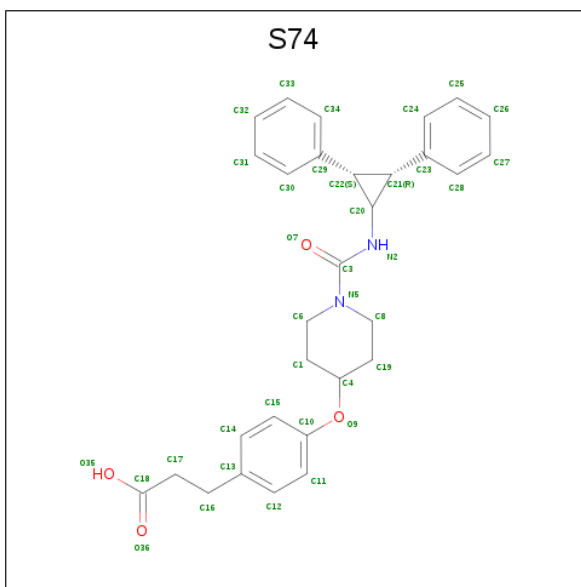
- Molecule 1 is a protein called Bifunctional epoxide hydrolase 2.

Mol	Chain	Residues	Atoms					ZeroOcc	AltConf	Trace
			Total	C	N	O	S			
1	A	316	2546	1636	426	461	23	0	0	0
1	B	316	2546	1636	426	461	23	0	0	0

There are 20 discrepancies between the modelled and reference sequences:

Chain	Residue	Modelled	Actual	Comment	Reference
A	220	MET	-	expression tag	UNP P34913
A	221	LYS	-	expression tag	UNP P34913
A	222	LYS	-	expression tag	UNP P34913
A	223	GLY	-	expression tag	UNP P34913
A	224	HIS	-	expression tag	UNP P34913
A	225	HIS	-	expression tag	UNP P34913
A	226	HIS	-	expression tag	UNP P34913
A	227	HIS	-	expression tag	UNP P34913
A	228	HIS	-	expression tag	UNP P34913
A	229	HIS	-	expression tag	UNP P34913
B	220	MET	-	expression tag	UNP P34913
B	221	LYS	-	expression tag	UNP P34913
B	222	LYS	-	expression tag	UNP P34913
B	223	GLY	-	expression tag	UNP P34913
B	224	HIS	-	expression tag	UNP P34913
B	225	HIS	-	expression tag	UNP P34913
B	226	HIS	-	expression tag	UNP P34913
B	227	HIS	-	expression tag	UNP P34913
B	228	HIS	-	expression tag	UNP P34913
B	229	HIS	-	expression tag	UNP P34913

- Molecule 2 is 3-{4-[(1-[(1s,2R,3S)-2,3-diphenylcyclopropyl]carbamoyl]piperidin-4-yl)oxy]phenyl}propanoic acid (three-letter code: S74) (formula: C₃₀H₃₂N₂O₄).



Mol	Chain	Residues	Atoms			ZeroOcc	AltConf	
2	A	1	Total	C	N	O	0	0
			36	30	2	4		
2	B	1	Total	C	N	O	0	0
			36	30	2	4		

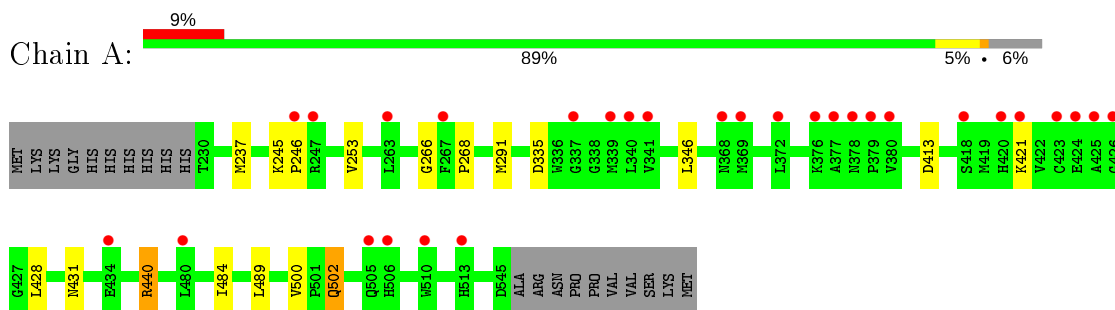
- Molecule 3 is water.

Mol	Chain	Residues	Atoms		ZeroOcc	AltConf
3	A	115	Total	O	0	0
			115	115		
3	B	76	Total	O	0	0
			76	76		

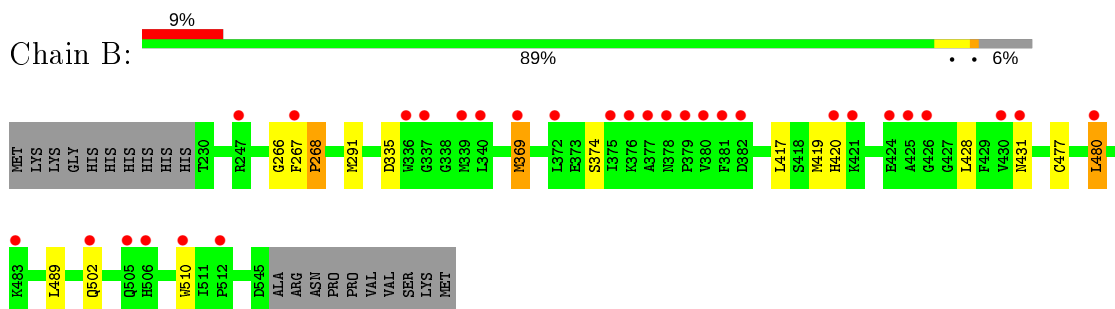
3 Residue-property plots [i](#)

These plots are drawn for all protein, RNA and DNA chains in the entry. The first graphic for a chain summarises the proportions of the various outlier classes displayed in the second graphic. The second graphic shows the sequence view annotated by issues in geometry and electron density. Residues are color-coded according to the number of geometric quality criteria for which they contain at least one outlier: green = 0, yellow = 1, orange = 2 and red = 3 or more. A red dot above a residue indicates a poor fit to the electron density ($RSRZ > 2$). Stretches of 2 or more consecutive residues without any outlier are shown as a green connector. Residues present in the sample, but not in the model, are shown in grey.

- Molecule 1: Bifunctional epoxide hydrolase 2



- Molecule 1: Bifunctional epoxide hydrolase 2



4 Data and refinement statistics

Property	Value	Source
Space group	C 1 2 1	Depositor
Cell constants a, b, c, α , β , γ	129.41Å 80.54Å 88.25Å 90.00° 125.70° 90.00°	Depositor
Resolution (Å)	50.00 – 1.80 29.05 – 1.80	Depositor EDS
% Data completeness (in resolution range)	94.1 (50.00-1.80) 94.1 (29.05-1.80)	Depositor EDS
R_{merge}	0.05	Depositor
R_{sym}	(Not available)	Depositor
$\langle I/\sigma(I) \rangle$ ¹	2.72 (at 1.80Å)	Xtrriage
Refinement program	REFMAC 5.8.0049	Depositor
R, R_{free}	0.199 , 0.222 0.206 , 0.227	Depositor DCC
R_{free} test set	3261 reflections (5.07%)	wwPDB-VP
Wilson B-factor (Å ²)	25.7	Xtrriage
Anisotropy	0.017	Xtrriage
Bulk solvent k_{sol} (e/Å ³), B_{sol} (Å ²)	0.42 , 43.0	EDS
L-test for twinning ²	$\langle L \rangle = 0.48$, $\langle L^2 \rangle = 0.31$	Xtrriage
Estimated twinning fraction	No twinning to report.	Xtrriage
F_o, F_c correlation	0.95	EDS
Total number of atoms	5355	wwPDB-VP
Average B, all atoms (Å ²)	34.0	wwPDB-VP

Xtrriage's analysis on translational NCS is as follows: *The largest off-origin peak in the Patterson function is 5.16% of the height of the origin peak. No significant pseudotranslation is detected.*

¹Intensities estimated from amplitudes.

²Theoretical values of $\langle |L| \rangle$, $\langle L^2 \rangle$ for acentric reflections are 0.5, 0.333 respectively for untwinned datasets, and 0.375, 0.2 for perfectly twinned datasets.

5 Model quality

5.1 Standard geometry

Bond lengths and bond angles in the following residue types are not validated in this section: S74

The Z score for a bond length (or angle) is the number of standard deviations the observed value is removed from the expected value. A bond length (or angle) with $|Z| > 5$ is considered an outlier worth inspection. RMSZ is the root-mean-square of all Z scores of the bond lengths (or angles).

Mol	Chain	Bond lengths		Bond angles	
		RMSZ	# Z >5	RMSZ	# Z >5
1	A	0.33	0/2622	0.56	1/3557 (0.0%)
1	B	0.32	0/2622	0.54	0/3557
All	All	0.32	0/5244	0.55	1/7114 (0.0%)

Chiral center outliers are detected by calculating the chiral volume of a chiral center and verifying if the center is modelled as a planar moiety or with the opposite hand. A planarity outlier is detected by checking planarity of atoms in a peptide group, atoms in a mainchain group or atoms of a sidechain that are expected to be planar.

Mol	Chain	#Chirality outliers	#Planarity outliers
1	A	0	1
1	B	0	1
All	All	0	2

There are no bond length outliers.

All (1) bond angle outliers are listed below:

Mol	Chain	Res	Type	Atoms	Z	Observed($^{\circ}$)	Ideal($^{\circ}$)
1	A	440	ARG	NE-CZ-NH2	-5.23	117.69	120.30

There are no chirality outliers.

All (2) planarity outliers are listed below:

Mol	Chain	Res	Type	Group
1	A	291	MET	Peptide
1	B	291	MET	Peptide

5.2 Too-close contacts [i](#)

In the following table, the Non-H and H(model) columns list the number of non-hydrogen atoms and hydrogen atoms in the chain respectively. The H(added) column lists the number of hydrogen atoms added and optimized by MolProbity. The Clashes column lists the number of clashes within the asymmetric unit, whereas Symm-Clashes lists symmetry related clashes.

Mol	Chain	Non-H	H(model)	H(added)	Clashes	Symm-Clashes
1	A	2546	0	2473	5	0
1	B	2546	0	2473	5	0
2	A	36	0	29	0	0
2	B	36	0	29	1	0
3	A	115	0	0	0	0
3	B	76	0	0	0	0
All	All	5355	0	5004	10	0

The all-atom clashscore is defined as the number of clashes found per 1000 atoms (including hydrogen atoms). The all-atom clashscore for this structure is 1.

All (10) close contacts within the same asymmetric unit are listed below, sorted by their clash magnitude.

Atom-1	Atom-2	Interatomic distance (Å)	Clash overlap (Å)
1:B:266:GLY:HA3	1:B:335:ASP:HB3	1.87	0.56
1:A:413:ASP:OD1	1:A:440:ARG:NH2	2.36	0.56
1:A:266:GLY:HA3	1:A:335:ASP:HB3	1.89	0.55
1:A:500:VAL:HG23	1:A:502:GLN:HG3	1.93	0.50
1:B:477:CYS:HA	1:B:480:LEU:HD22	1.93	0.49
1:B:428:LEU:HD21	2:B:601:S74:H1	1.95	0.47
1:A:245:LYS:HB2	1:A:246:PRO:HD2	1.97	0.45
1:A:237:MET:HB3	1:A:253:VAL:HG13	1.98	0.45
1:B:369:MET:SD	1:B:374:SER:OG	2.77	0.42
1:B:267:PHE:HA	1:B:268:PRO:HA	1.96	0.40

There are no symmetry-related clashes.

5.3 Torsion angles [i](#)

5.3.1 Protein backbone [i](#)

In the following table, the Percentiles column shows the percent Ramachandran outliers of the chain as a percentile score with respect to all X-ray entries followed by that with respect to entries of similar resolution.

The Analysed column shows the number of residues for which the backbone conformation was analysed, and the total number of residues.

Mol	Chain	Analysed	Favoured	Allowed	Outliers	Percentiles	
1	A	314/336 (94%)	303 (96%)	10 (3%)	1 (0%)	41	27
1	B	314/336 (94%)	307 (98%)	6 (2%)	1 (0%)	41	27
All	All	628/672 (94%)	610 (97%)	16 (2%)	2 (0%)	41	27

All (2) Ramachandran outliers are listed below:

Mol	Chain	Res	Type
1	B	268	PRO
1	A	268	PRO

5.3.2 Protein sidechains [i](#)

In the following table, the Percentiles column shows the percent sidechain outliers of the chain as a percentile score with respect to all X-ray entries followed by that with respect to entries of similar resolution.

The Analysed column shows the number of residues for which the sidechain conformation was analysed, and the total number of residues.

Mol	Chain	Analysed	Rotameric	Outliers	Percentiles	
1	A	278/296 (94%)	271 (98%)	7 (2%)	47	34
1	B	278/296 (94%)	269 (97%)	9 (3%)	39	25
All	All	556/592 (94%)	540 (97%)	16 (3%)	42	29

All (16) residues with a non-rotameric sidechain are listed below:

Mol	Chain	Res	Type
1	A	346	LEU
1	A	421	LYS
1	A	428	LEU
1	A	431	ASN
1	A	484	ILE
1	A	489	LEU
1	A	502	GLN
1	B	369	MET
1	B	417	LEU
1	B	419	MET
1	B	420	HIS

Continued on next page...

Continued from previous page...

Mol	Chain	Res	Type
1	B	431	ASN
1	B	480	LEU
1	B	489	LEU
1	B	502	GLN
1	B	510	TRP

Some sidechains can be flipped to improve hydrogen bonding and reduce clashes. All (9) such sidechains are listed below:

Mol	Chain	Res	Type
1	A	378	ASN
1	A	384	GLN
1	A	535	ASN
1	B	378	ASN
1	B	384	GLN
1	B	431	ASN
1	B	452	GLN
1	B	535	ASN
1	B	536	GLN

5.3.3 RNA [i](#)

There are no RNA molecules in this entry.

5.4 Non-standard residues in protein, DNA, RNA chains [i](#)

There are no non-standard protein/DNA/RNA residues in this entry.

5.5 Carbohydrates [i](#)

There are no carbohydrates in this entry.

5.6 Ligand geometry [i](#)

2 ligands are modelled in this entry.

In the following table, the Counts columns list the number of bonds (or angles) for which Mogul statistics could be retrieved, the number of bonds (or angles) that are observed in the model and the number of bonds (or angles) that are defined in the Chemical Component Dictionary. The Link column lists molecule types, if any, to which the group is linked. The Z score for a bond

length (or angle) is the number of standard deviations the observed value is removed from the expected value. A bond length (or angle) with $|Z| > 2$ is considered an outlier worth inspection. RMSZ is the root-mean-square of all Z scores of the bond lengths (or angles).

Mol	Type	Chain	Res	Link	Bond lengths			Bond angles		
					Counts	RMSZ	# Z > 2	Counts	RMSZ	# Z > 2
2	S74	A	601	-	35,40,40	0.84	0	44,55,55	1.41	4 (9%)
2	S74	B	601	-	35,40,40	0.83	1 (2%)	44,55,55	1.54	4 (9%)

In the following table, the Chirals column lists the number of chiral outliers, the number of chiral centers analysed, the number of these observed in the model and the number defined in the Chemical Component Dictionary. Similar counts are reported in the Torsion and Rings columns. '-' means no outliers of that kind were identified.

Mol	Type	Chain	Res	Link	Chirals	Torsions	Rings
2	S74	A	601	-	-	5/23/44/44	0/5/5/5
2	S74	B	601	-	-	5/23/44/44	0/5/5/5

All (1) bond length outliers are listed below:

Mol	Chain	Res	Type	Atoms	Z	Observed(Å)	Ideal(Å)
2	B	601	S74	C23-C21	-2.01	1.47	1.51

All (8) bond angle outliers are listed below:

Mol	Chain	Res	Type	Atoms	Z	Observed(°)	Ideal(°)
2	B	601	S74	C16-C17-C18	-6.54	101.69	112.67
2	A	601	S74	C16-C17-C18	-5.81	102.93	112.67
2	B	601	S74	C8-C19-C4	4.85	115.66	110.32
2	A	601	S74	C19-C8-N5	3.66	116.39	110.82
2	B	601	S74	C19-C8-N5	3.36	115.94	110.82
2	A	601	S74	C8-C19-C4	3.16	113.79	110.32
2	A	601	S74	C10-O9-C4	-2.24	114.63	119.13
2	B	601	S74	C10-O9-C4	-2.01	115.10	119.13

There are no chirality outliers.

All (10) torsion outliers are listed below:

Mol	Chain	Res	Type	Atoms
2	B	601	S74	O7-C3-N5-C6
2	B	601	S74	N2-C3-N5-C6
2	A	601	S74	N2-C3-N5-C6

Continued on next page...

Continued from previous page...

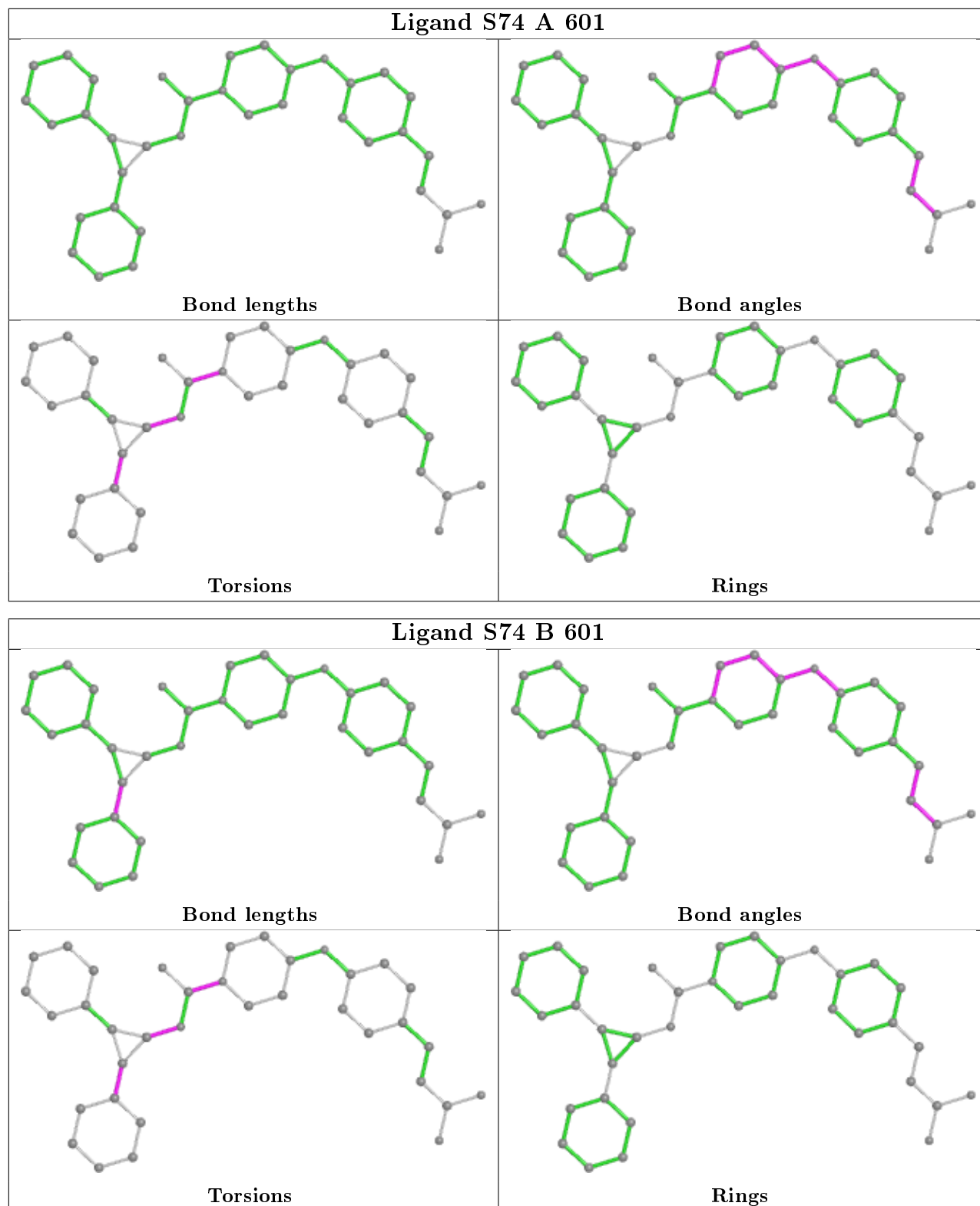
Mol	Chain	Res	Type	Atoms
2	B	601	S74	C22-C21-C23-C28
2	A	601	S74	C21-C20-N2-C3
2	B	601	S74	C21-C20-N2-C3
2	A	601	S74	O7-C3-N5-C6
2	A	601	S74	C22-C21-C23-C24
2	A	601	S74	C22-C21-C23-C28
2	B	601	S74	C22-C21-C23-C24

There are no ring outliers.

1 monomer is involved in 1 short contact:

Mol	Chain	Res	Type	Clashes	Symm-Clashes
2	B	601	S74	1	0

The following is a two-dimensional graphical depiction of Mogul quality analysis of bond lengths, bond angles, torsion angles, and ring geometry for all instances of the Ligand of Interest. In addition, ligands with molecular weight > 250 and outliers as shown on the validation Tables will also be included. For torsion angles, if less than 5% of the Mogul distribution of torsion angles is within 10 degrees of the torsion angle in question, then that torsion angle is considered an outlier. Any bond that is central to one or more torsion angles identified as an outlier by Mogul will be highlighted in the graph. For rings, the root-mean-square deviation (RMSD) between the ring in question and similar rings identified by Mogul is calculated over all ring torsion angles. If the average RMSD is greater than 60 degrees and the minimal RMSD between the ring in question and any Mogul-identified rings is also greater than 60 degrees, then that ring is considered an outlier. The outliers are highlighted in purple. The color gray indicates Mogul did not find sufficient equivalents in the CSD to analyse the geometry.



5.7 Other polymers [\(i\)](#)

There are no such residues in this entry.

5.8 Polymer linkage issues

There are no chain breaks in this entry.

6 Fit of model and data

6.1 Protein, DNA and RNA chains

In the following table, the column labelled ‘#RSRZ> 2’ contains the number (and percentage) of RSRZ outliers, followed by percent RSRZ outliers for the chain as percentile scores relative to all X-ray entries and entries of similar resolution. The OWAB column contains the minimum, median, 95th percentile and maximum values of the occupancy-weighted average B-factor per residue. The column labelled ‘Q< 0.9’ lists the number of (and percentage) of residues with an average occupancy less than 0.9.

Mol	Chain	Analysed	<RSRZ>	#RSRZ>2	OWAB(Å ²)	Q<0.9
1	A	316/336 (94%)	0.19	29 (9%) 9 6	19, 29, 59, 80	0
1	B	316/336 (94%)	0.30	30 (9%) 8 6	21, 33, 66, 90	0
All	All	632/672 (94%)	0.24	59 (9%) 8 6	19, 31, 62, 90	0

All (59) RSRZ outliers are listed below:

Mol	Chain	Res	Type	RSRZ
1	B	420	HIS	7.6
1	A	420	HIS	7.2
1	A	377	ALA	6.1
1	B	369	MET	5.5
1	B	421	LYS	5.4
1	B	380	VAL	4.8
1	B	510	TRP	4.8
1	A	376	LYS	4.4
1	A	424	GLU	4.2
1	A	378	ASN	4.2
1	A	423	CYS	4.0
1	B	378	ASN	3.8
1	A	510	TRP	3.7
1	B	424	GLU	3.7
1	A	372	LEU	3.6
1	A	369	MET	3.5
1	B	377	ALA	3.5
1	B	340	LEU	3.4
1	B	480	LEU	3.3
1	A	421	LYS	3.2
1	B	430	VAL	3.2
1	B	512	PRO	3.1
1	B	372	LEU	3.0
1	A	418	SER	3.0

Continued on next page...

Continued from previous page...

Mol	Chain	Res	Type	RSRZ
1	B	267	PHE	3.0
1	A	380	VAL	2.9
1	B	382	ASP	2.8
1	B	376	LYS	2.8
1	B	247	ARG	2.8
1	A	426	GLY	2.7
1	B	336	TRP	2.7
1	A	263	LEU	2.6
1	B	339	MET	2.6
1	A	341	VAL	2.5
1	B	337	GLY	2.5
1	A	506	HIS	2.5
1	B	379	PRO	2.5
1	B	375	ILE	2.5
1	B	502	GLN	2.5
1	A	340	LEU	2.4
1	B	483	LYS	2.4
1	A	434	GLU	2.4
1	A	246	PRO	2.4
1	A	339	MET	2.3
1	A	480	LEU	2.3
1	B	505	GLN	2.3
1	B	381	PHE	2.3
1	B	426	GLY	2.2
1	A	379	PRO	2.2
1	A	425	ALA	2.2
1	B	425	ALA	2.2
1	A	505	GLN	2.2
1	A	247	ARG	2.1
1	A	513	HIS	2.1
1	A	368	ASN	2.1
1	B	431	ASN	2.1
1	A	337	GLY	2.1
1	A	267	PHE	2.1
1	B	506	HIS	2.1

6.2 Non-standard residues in protein, DNA, RNA chains

There are no non-standard protein/DNA/RNA residues in this entry.

6.3 Carbohydrates [i](#)

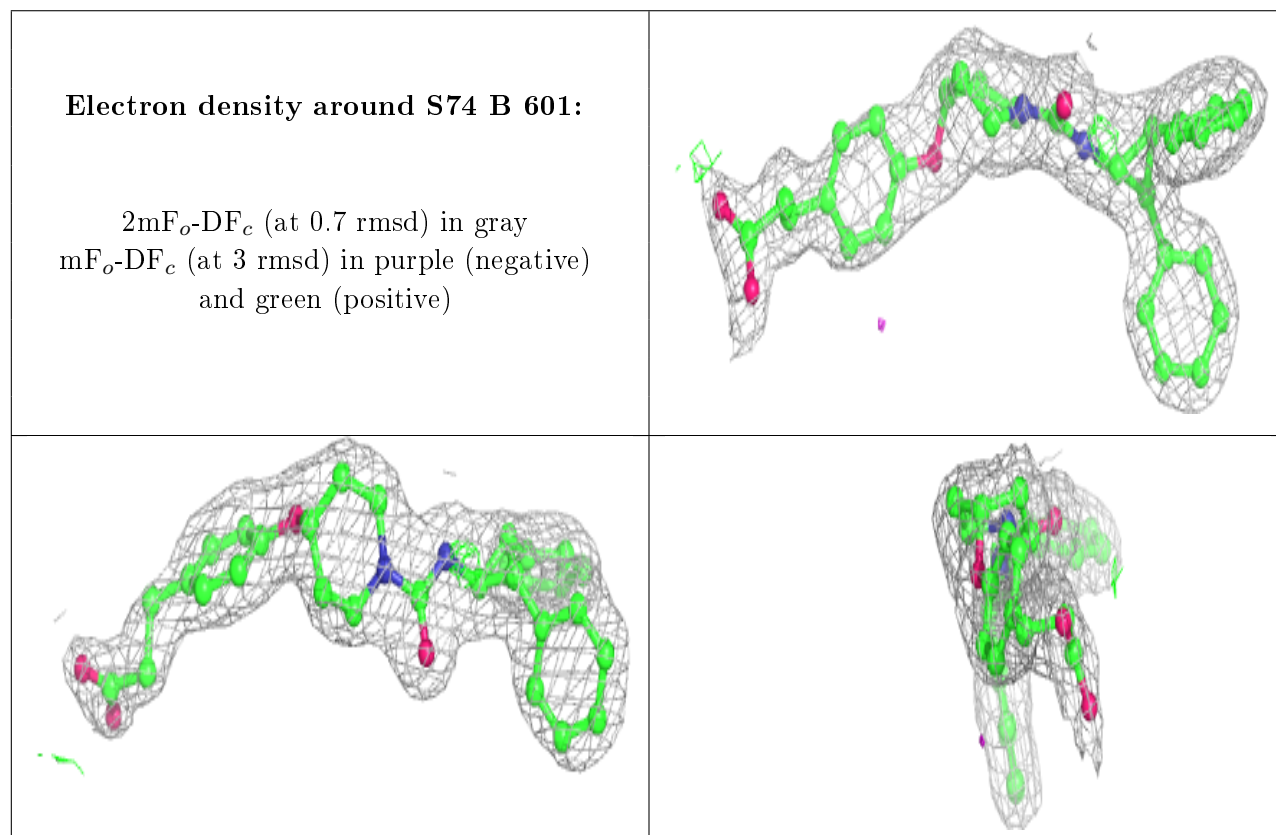
There are no carbohydrates in this entry.

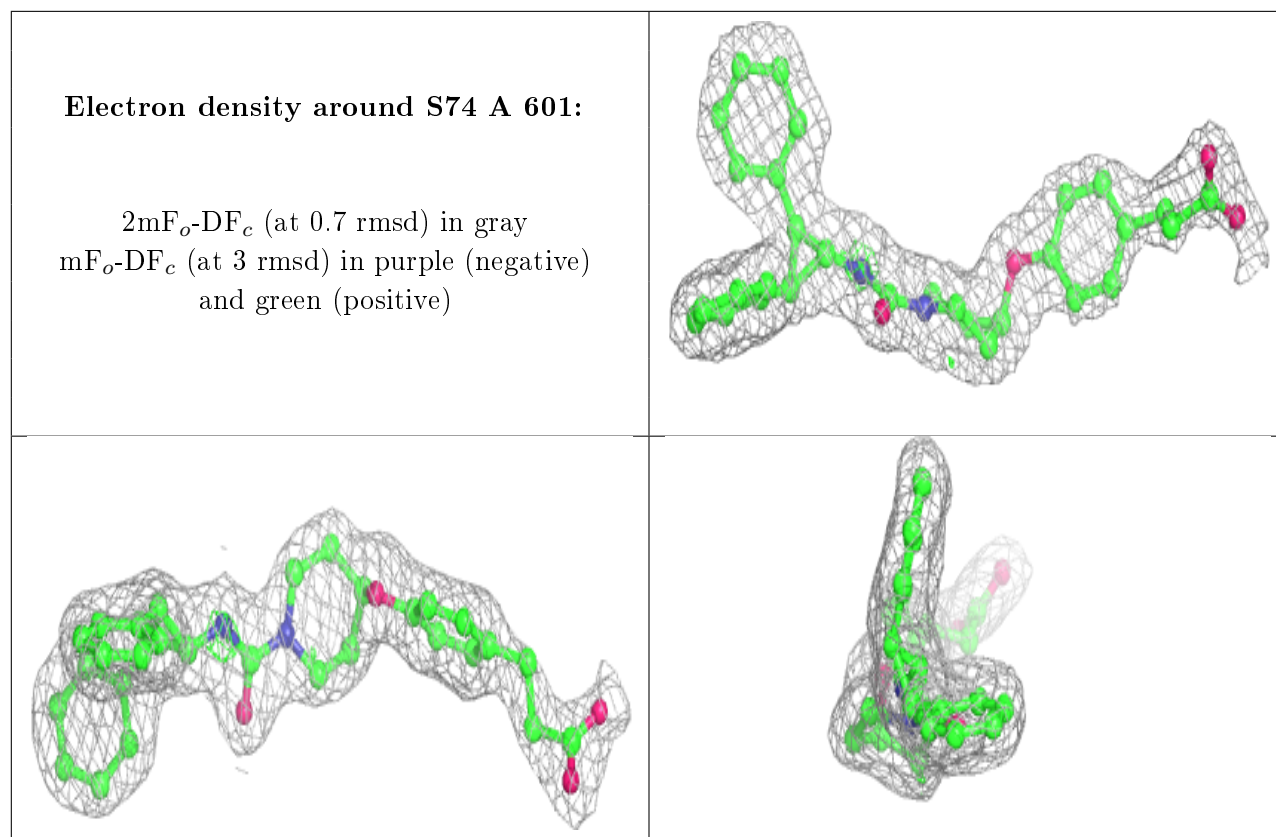
6.4 Ligands [i](#)

In the following table, the Atoms column lists the number of modelled atoms in the group and the number defined in the chemical component dictionary. The B-factors column lists the minimum, median, 95th percentile and maximum values of B factors of atoms in the group. The column labelled 'Q<0.9' lists the number of atoms with occupancy less than 0.9.

Mol	Type	Chain	Res	Atoms	RSCC	RSR	B-factors(Å ²)	Q<0.9
2	S74	B	601	36/36	0.81	0.18	32,36,57,58	0
2	S74	A	601	36/36	0.86	0.18	27,31,51,54	0

The following is a graphical depiction of the model fit to experimental electron density of all instances of the Ligand of Interest. In addition, ligands with molecular weight > 250 and outliers as shown on the geometry validation Tables will also be included. Each fit is shown from different orientation to approximate a three-dimensional view.





6.5 Other polymers [i](#)

There are no such residues in this entry.