



Full wwPDB X-ray Structure Validation Report ⓘ

Feb 17, 2018 – 08:43 am GMT

PDB ID : 1X88
Title : Human Eg5 motor domain bound to Mg-ADP and monastrol
Authors : Maliga, Z.; Mitchison, T.J.
Deposited on : 2004-08-17
Resolution : 1.80 Å(reported)

This is a Full wwPDB X-ray Structure Validation Report for a publicly released PDB entry.

We welcome your comments at validation@mail.wwpdb.org

A user guide is available at

<https://www.wwpdb.org/validation/2017/XrayValidationReportHelp>

with specific help available everywhere you see the ⓘ symbol.

The following versions of software and data (see [references ⓘ](#)) were used in the production of this report:

MolProbity : 4.02b-467
Mogul : 1.7.3 (157068), CSD as539be (2018)
Xtrriage (Phenix) : **NOT EXECUTED**
EDS : **NOT EXECUTED**
Percentile statistics : 20171227.v01 (using entries in the PDB archive December 27th 2017)
Ideal geometry (proteins) : Engh & Huber (2001)
Ideal geometry (DNA, RNA) : Parkinson et al. (1996)
Validation Pipeline (wwPDB-VP) : trunk30686

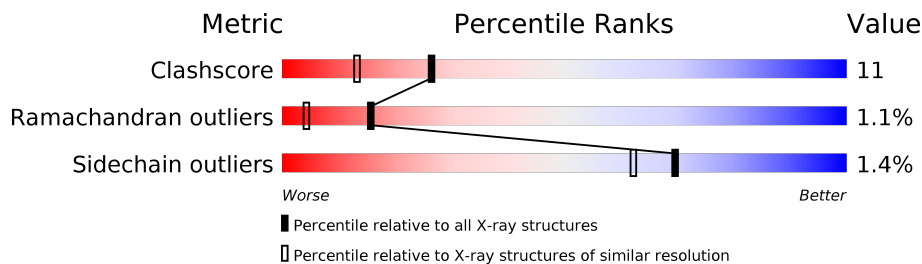
1 Overall quality at a glance

The following experimental techniques were used to determine the structure:

X-RAY DIFFRACTION

The reported resolution of this entry is 1.80 Å.

Percentile scores (ranging between 0-100) for global validation metrics of the entry are shown in the following graphic. The table shows the number of entries on which the scores are based.



Metric	Whole archive (#Entries)	Similar resolution (#Entries, resolution range(Å))
Clashscore	122078	6075 (1.80-1.80)
Ramachandran outliers	120005	6009 (1.80-1.80)
Sidechain outliers	119972	6008 (1.80-1.80)

The table below summarises the geometric issues observed across the polymeric chains and their fit to the electron density. The red, orange, yellow and green segments on the lower bar indicate the fraction of residues that contain outliers for ≥ 3 , 2, 1 and 0 types of geometric quality criteria. A grey segment represents the fraction of residues that are not modelled. The numeric value for each fraction is indicated below the corresponding segment, with a dot representing fractions $\leq 5\%$. The upper red bar (where present) indicates the fraction of residues that have poor fit to the electron density. The numeric value is given above the bar.

Note EDS was not executed.

Mol	Chain	Length	Quality of chain
1	A	359	
1	B	359	

2 Entry composition [i](#)

There are 5 unique types of molecules in this entry. The entry contains 6030 atoms, of which 0 are hydrogens and 0 are deuteriums.

In the tables below, the ZeroOcc column contains the number of atoms modelled with zero occupancy, the AltConf column contains the number of residues with at least one atom in alternate conformation and the Trace column contains the number of residues modelled with at most 2 atoms.

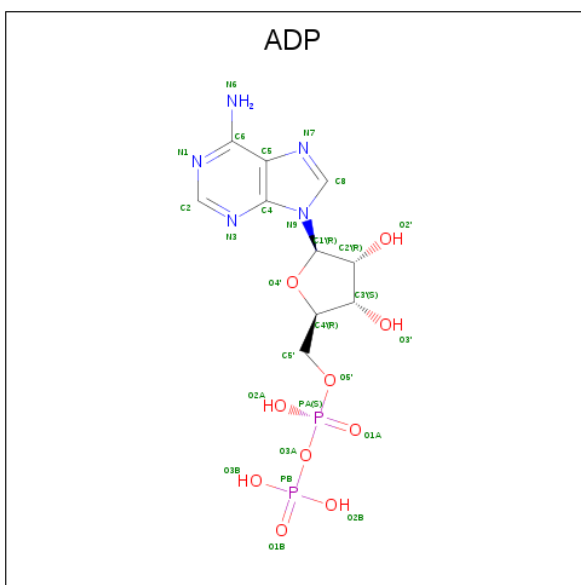
- Molecule 1 is a protein called Kinesin-like protein KIF11.

Mol	Chain	Residues	Atoms					ZeroOcc	AltConf	Trace
			Total	C	N	O	S			
1	A	332	Total 2610	C 1634	N 454	O 512	S 10	0	0	0
1	B	334	Total 2626	C 1645	N 457	O 514	S 10	0	0	0

- Molecule 2 is MAGNESIUM ION (three-letter code: MG) (formula: Mg).

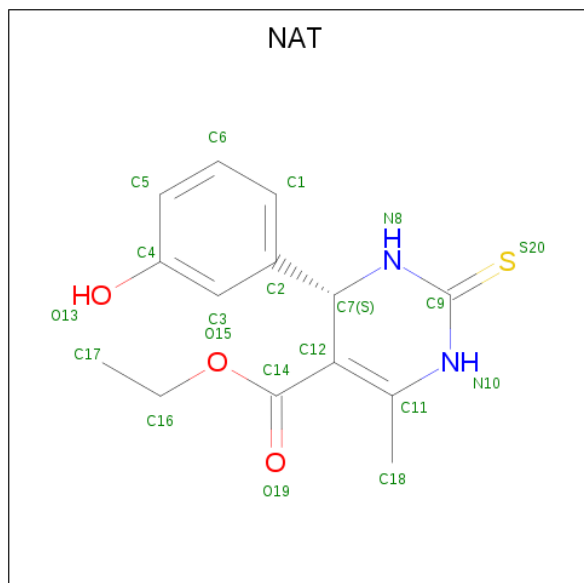
Mol	Chain	Residues	Atoms		ZeroOcc	AltConf
2	B	1	Total 1	Mg 1	0	0
2	A	1	Total 1	Mg 1	0	0

- Molecule 3 is ADENOSINE-5'-DIPHOSPHATE (three-letter code: ADP) (formula: $C_{10}H_{15}N_5O_{10}P_2$).



Mol	Chain	Residues	Atoms					ZeroOcc	AltConf
			Total	C	N	O	P		
3	A	1	Total	C	N	O	P	0	0
			27	10	5	10	2		
3	B	1	Total	C	N	O	P	0	0
			27	10	5	10	2		

- Molecule 4 is ETHYL 4-(3-HYDROXYPHENYL)-6-METHYL-2-THIOXO-1,2,3,4-TETRAHYDROPYRIMIDINE-5-CARBOXYLATE (three-letter code: NAT) (formula: C₁₄H₁₆N₂O₃S).



Mol	Chain	Residues	Atoms					ZeroOcc	AltConf
			Total	C	N	O	S		
4	A	1	Total	C	N	O	S	0	0
			20	14	2	3	1		
4	B	1	Total	C	N	O	S	0	0
			20	14	2	3	1		

- Molecule 5 is water.

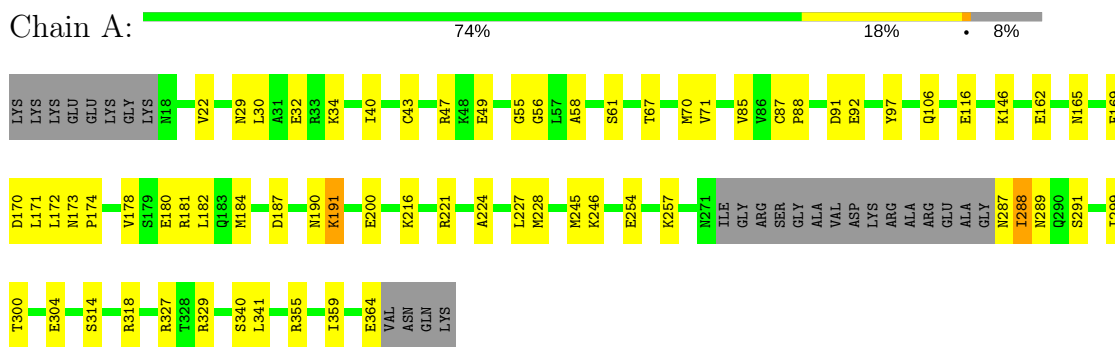
Mol	Chain	Residues	Atoms		ZeroOcc	AltConf
			Total	O		
5	A	359	Total	O	0	0
			359	359		
5	B	339	Total	O	0	0
			339	339		

3 Residue-property plots [i](#)

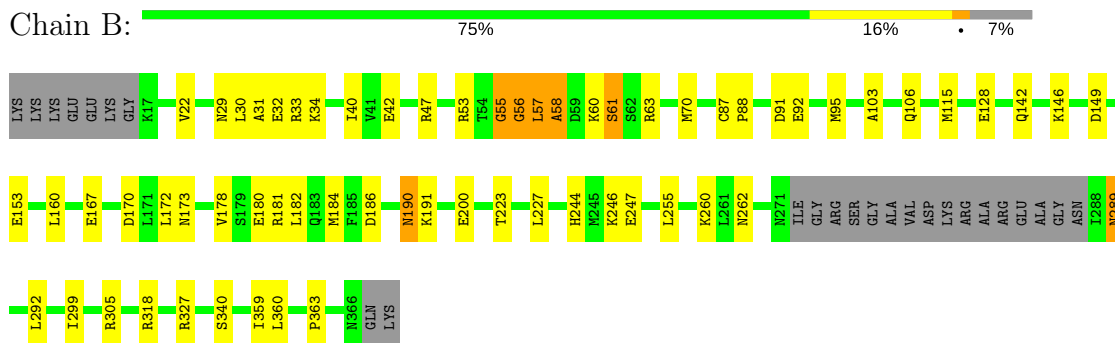
These plots are drawn for all protein, RNA and DNA chains in the entry. The first graphic for a chain summarises the proportions of the various outlier classes displayed in the second graphic. The second graphic shows the sequence view annotated by issues in geometry and electron density. Residues are color-coded according to the number of geometric quality criteria for which they contain at least one outlier: green = 0, yellow = 1, orange = 2 and red = 3 or more. A red dot above a residue indicates a poor fit to the electron density ($RSRZ > 2$). Stretches of 2 or more consecutive residues without any outlier are shown as a green connector. Residues present in the sample, but not in the model, are shown in grey.

Note EDS was not executed.

- Molecule 1: Kinesin-like protein KIF11



- Molecule 1: Kinesin-like protein KIF11



4 Data and refinement statistics

Xtrriage (Phenix) and EDS were not executed - this section is therefore incomplete.

Property	Value	Source
Space group	P 21 21 21	Depositor
Cell constants a, b, c, α , β , γ	69.71Å 79.65Å 159.45Å 90.00° 90.00° 90.00°	Depositor
Resolution (Å)	19.93 – 1.80	Depositor
% Data completeness (in resolution range)	97.4 (19.93-1.80)	Depositor
R_{merge}	(Not available)	Depositor
R_{sym}	(Not available)	Depositor
Refinement program	CNS 1.1	Depositor
R, R_{free}	0.203 , 0.225	Depositor
Estimated twinning fraction	No twinning to report.	Xtrriage
Total number of atoms	6030	wwPDB-VP
Average B, all atoms (Å ²)	23.0	wwPDB-VP

5 Model quality

5.1 Standard geometry

Bond lengths and bond angles in the following residue types are not validated in this section: MG, NAT, ADP

The Z score for a bond length (or angle) is the number of standard deviations the observed value is removed from the expected value. A bond length (or angle) with $|Z| > 5$ is considered an outlier worth inspection. RMSZ is the root-mean-square of all Z scores of the bond lengths (or angles).

Mol	Chain	Bond lengths		Bond angles	
		RMSZ	# Z >5	RMSZ	# Z >5
1	A	0.28	0/2649	0.59	0/3583
1	B	0.28	0/2665	0.60	0/3604
All	All	0.28	0/5314	0.59	0/7187

There are no bond length outliers.

There are no bond angle outliers.

There are no chirality outliers.

There are no planarity outliers.

5.2 Too-close contacts

In the following table, the Non-H and H(model) columns list the number of non-hydrogen atoms and hydrogen atoms in the chain respectively. The H(added) column lists the number of hydrogen atoms added and optimized by MolProbity. The Clashes column lists the number of clashes within the asymmetric unit, whereas Symm-Clashes lists symmetry related clashes.

Mol	Chain	Non-H	H(model)	H(added)	Clashes	Symm-Clashes
1	A	2610	0	2630	53	0
1	B	2626	0	2652	63	0
2	A	1	0	0	0	0
2	B	1	0	0	0	0
3	A	27	0	12	0	0
3	B	27	0	12	0	0
4	A	20	0	15	1	0
4	B	20	0	15	1	0
5	A	359	0	0	7	0
5	B	339	0	0	10	0
All	All	6030	0	5336	118	0

The all-atom clashscore is defined as the number of clashes found per 1000 atoms (including hydrogen atoms). The all-atom clashscore for this structure is 11.

All (118) close contacts within the same asymmetric unit are listed below, sorted by their clash magnitude.

Atom-1	Atom-2	Interatomic distance (Å)	Clash overlap (Å)
1:A:49:GLU:HG2	1:A:67:THR:HG22	1.45	0.99
4:B:802:NAT:O15	4:B:802:NAT:H181	1.75	0.86
4:A:801:NAT:H181	4:A:801:NAT:O15	1.77	0.83
1:A:162:GLU:HG3	1:A:171:LEU:HD23	1.60	0.82
1:A:169:PHE:HZ	1:A:181:ARG:HH11	1.28	0.81
1:B:53:ARG:HD3	1:B:57:LEU:HG	1.61	0.81
1:A:30:LEU:HD11	1:A:34:LYS:HE3	1.63	0.79
1:A:56:GLY:HA3	1:A:61:SER:HA	1.66	0.76
1:A:70:MET:HE1	1:A:85:VAL:HG22	1.68	0.76
1:B:128:GLU:HG2	5:B:1010:HOH:O	1.86	0.75
1:B:223:THR:O	1:B:227:LEU:HD23	1.92	0.70
1:B:22:VAL:HG22	1:B:70:MET:HB2	1.72	0.69
1:B:184:MET:HE1	1:B:318:ARG:HD3	1.74	0.69
1:B:30:LEU:HD12	1:B:31:ALA:N	2.07	0.69
1:B:299:ILE:HG23	1:B:359:ILE:HD11	1.75	0.68
1:A:55:GLY:O	1:A:61:SER:HB3	1.95	0.67
1:B:30:LEU:O	1:B:34:LYS:HG2	1.94	0.67
1:A:227:LEU:HD22	1:A:228:MET:HG3	1.77	0.66
1:B:63:ARG:HH11	1:B:63:ARG:HG2	1.60	0.66
1:A:40:ILE:HD13	1:A:340:SER:HA	1.80	0.62
1:B:106:GLN:HG3	5:B:952:HOH:O	1.98	0.62
1:A:184:MET:HE1	1:A:318:ARG:HD3	1.83	0.61
1:B:61:SER:HB2	5:B:1050:HOH:O	2.00	0.61
1:A:187:ASP:HB3	1:A:190:ASN:HB2	1.84	0.60
1:B:42:GLU:HG3	5:B:917:HOH:O	2.01	0.60
1:A:106:GLN:HG3	5:A:902:HOH:O	2.00	0.60
1:B:142:GLN:O	1:B:146:LYS:HG3	2.02	0.60
1:B:58:ALA:C	1:B:60:LYS:H	2.06	0.59
1:B:60:LYS:HG2	1:B:61:SER:N	2.17	0.59
1:B:29:ASN:O	1:B:33:ARG:HG2	2.03	0.58
1:A:227:LEU:O	1:A:227:LEU:HD23	2.03	0.58
1:A:116:GLU:OE2	1:A:221:ARG:NH2	2.34	0.58
1:A:170:ASP:HB2	1:A:182:LEU:HD11	1.84	0.58
1:B:57:LEU:O	1:B:58:ALA:HB3	2.04	0.57
1:A:169:PHE:HZ	1:A:181:ARG:NH1	2.00	0.57
1:A:172:LEU:O	1:A:174:PRO:HD3	2.05	0.56
1:A:87:CYS:HB2	1:A:88:PRO:HD3	1.87	0.56

Continued on next page...

Continued from previous page...

Atom-1	Atom-2	Interatomic distance (Å)	Clash overlap (Å)
1:B:190:ASN:HD22	1:B:191:LYS:N	2.03	0.56
1:B:87:CYS:HB3	1:B:88:PRO:HD3	1.89	0.55
1:B:305:ARG:HG3	1:B:305:ARG:HH11	1.71	0.55
1:B:40:ILE:HD13	1:B:340:SER:HA	1.88	0.55
1:A:257:LYS:HG2	5:A:881:HOH:O	2.06	0.55
1:B:57:LEU:HD12	1:B:57:LEU:H	1.71	0.54
1:B:360:LEU:C	1:B:360:LEU:HD13	2.28	0.54
1:A:227:LEU:C	1:A:227:LEU:HD23	2.29	0.54
1:A:341:LEU:O	1:A:341:LEU:HD13	2.09	0.53
1:B:53:ARG:CD	1:B:57:LEU:HG	2.36	0.53
1:A:246:LYS:HD2	1:A:254:GLU:OE1	2.08	0.53
1:A:56:GLY:HA3	1:A:61:SER:CA	2.37	0.53
1:B:60:LYS:O	1:B:61:SER:HB3	2.09	0.53
1:B:47:ARG:HH11	1:B:47:ARG:HG2	1.74	0.52
1:B:247:GLU:HG3	1:B:255:LEU:HB2	1.90	0.52
1:A:162:GLU:OE2	1:A:221:ARG:HD3	2.09	0.52
1:B:29:ASN:OD1	1:B:32:GLU:HG3	2.09	0.52
1:B:173:ASN:ND2	1:B:200:GLU:HG3	2.25	0.51
1:B:56:GLY:HA3	1:B:61:SER:HA	1.92	0.50
1:A:191:LYS:HB2	1:A:191:LYS:NZ	2.27	0.50
1:A:30:LEU:O	1:A:30:LEU:HD13	2.11	0.50
1:B:244:HIS:HD2	5:B:864:HOH:O	1.94	0.49
1:B:170:ASP:HB2	1:B:182:LEU:HD11	1.93	0.49
1:B:57:LEU:HD12	5:B:1050:HOH:O	2.13	0.49
1:A:355:ARG:HG3	5:A:1048:HOH:O	2.13	0.49
1:B:327:ARG:O	1:B:363:PRO:HA	2.13	0.48
1:B:178:VAL:O	1:B:178:VAL:HG12	2.14	0.48
1:B:57:LEU:CD1	1:B:57:LEU:H	2.25	0.48
1:A:67:THR:HG23	5:A:1065:HOH:O	2.13	0.47
1:B:55:GLY:C	1:B:57:LEU:H	2.18	0.47
1:B:92:GLU:HA	1:B:95:MET:CE	2.43	0.47
1:A:173:ASN:HA	1:A:200:GLU:OE1	2.15	0.47
1:B:61:SER:OG	1:B:63:ARG:NH1	2.44	0.47
1:B:186:ASP:HB3	5:B:1130:HOH:O	2.15	0.47
1:B:103:ALA:HB2	1:B:115:MET:CG	2.45	0.47
1:A:29:ASN:OD1	1:A:32:GLU:HG3	2.15	0.47
1:A:300:THR:O	1:A:304:GLU:HG3	2.14	0.46
1:A:97:TYR:HE1	1:A:364:GLU:OE1	1.99	0.46
1:A:299:ILE:HG23	1:A:359:ILE:HD11	1.97	0.46
1:A:245:MET:HB2	1:A:257:LYS:HG3	1.98	0.45
1:A:92:GLU:OE1	1:A:329:ARG:HD2	2.16	0.45

Continued on next page...

Continued from previous page...

Atom-1	Atom-2	Interatomic distance (Å)	Clash overlap (Å)
1:A:180:GLU:HG2	5:A:923:HOH:O	2.15	0.45
1:B:92:GLU:HA	1:B:95:MET:HE2	1.99	0.45
1:B:60:LYS:O	1:B:61:SER:CB	2.63	0.45
1:B:160:LEU:HB3	1:B:172:LEU:HG	1.98	0.45
1:B:178:VAL:HG23	5:B:1001:HOH:O	2.17	0.45
1:B:247:GLU:CG	1:B:255:LEU:HB2	2.46	0.44
1:B:153:GLU:OE2	1:B:246:LYS:HE3	2.17	0.44
1:B:184:MET:HE1	1:B:318:ARG:CD	2.46	0.44
1:A:245:MET:SD	1:A:257:LYS:HE3	2.57	0.44
1:B:260:LYS:HE2	1:B:262:ASN:HD21	1.82	0.44
1:A:30:LEU:CD1	1:A:34:LYS:HE3	2.42	0.44
1:A:327:ARG:HG2	1:A:327:ARG:HH11	1.83	0.43
1:A:47:ARG:HH11	1:A:47:ARG:HG2	1.83	0.43
1:B:63:ARG:HH11	1:B:63:ARG:CG	2.28	0.43
1:A:178:VAL:HG11	1:A:224:ALA:HA	2.00	0.43
1:B:184:MET:HE3	1:B:318:ARG:CZ	2.48	0.43
1:B:57:LEU:HD11	5:B:1056:HOH:O	2.18	0.43
1:A:300:THR:OG1	1:A:355:ARG:NH2	2.50	0.43
1:A:22:VAL:CG1	1:A:70:MET:HB2	2.49	0.43
1:B:56:GLY:O	1:B:60:LYS:O	2.37	0.42
1:A:162:GLU:HG3	1:A:171:LEU:CD2	2.42	0.42
1:B:305:ARG:NH1	1:B:305:ARG:HG3	2.34	0.42
1:B:57:LEU:O	1:B:58:ALA:CB	2.67	0.42
1:A:291:SER:HA	1:A:314:SER:HB2	2.00	0.42
1:B:289:ASN:ND2	1:B:292:LEU:H	2.17	0.42
1:B:40:ILE:HA	1:B:53:ARG:NH1	2.34	0.42
1:A:341:LEU:C	1:A:341:LEU:HD13	2.39	0.42
1:B:289:ASN:HD22	1:B:292:LEU:H	1.68	0.42
1:A:184:MET:HE3	1:A:318:ARG:NH1	2.34	0.41
1:A:43:CYS:HB3	1:A:71:VAL:HG12	2.02	0.41
1:B:30:LEU:C	1:B:30:LEU:HD12	2.40	0.41
1:B:91:ASP:OD1	1:B:146:LYS:NZ	2.46	0.41
1:B:57:LEU:HA	1:B:61:SER:HB3	2.03	0.41
1:B:58:ALA:O	1:B:60:LYS:N	2.50	0.41
1:A:288:ILE:HD11	5:B:939:HOH:O	2.20	0.41
1:B:167:GLU:OE2	1:B:181:ARG:NH1	2.54	0.41
1:A:174:PRO:HG2	5:A:1003:HOH:O	2.21	0.41
1:A:22:VAL:HG12	1:A:70:MET:HB2	2.03	0.41
1:A:91:ASP:OD1	1:A:146:LYS:HE2	2.21	0.40
1:A:216:LYS:HA	5:A:1040:HOH:O	2.22	0.40

There are no symmetry-related clashes.

5.3 Torsion angles [i](#)

5.3.1 Protein backbone [i](#)

In the following table, the Percentiles column shows the percent Ramachandran outliers of the chain as a percentile score with respect to all X-ray entries followed by that with respect to entries of similar resolution.

The Analysed column shows the number of residues for which the backbone conformation was analysed, and the total number of residues.

Mol	Chain	Analysed	Favoured	Allowed	Outliers	Percentiles	
1	A	328/359 (91%)	323 (98%)	3 (1%)	2 (1%)	27	13
1	B	330/359 (92%)	321 (97%)	4 (1%)	5 (2%)	11	3
All	All	658/718 (92%)	644 (98%)	7 (1%)	7 (1%)	16	4

All (7) Ramachandran outliers are listed below:

Mol	Chain	Res	Type
1	B	57	LEU
1	B	58	ALA
1	B	56	GLY
1	B	61	SER
1	A	58	ALA
1	A	288	ILE
1	B	55	GLY

5.3.2 Protein sidechains [i](#)

In the following table, the Percentiles column shows the percent sidechain outliers of the chain as a percentile score with respect to all X-ray entries followed by that with respect to entries of similar resolution.

The Analysed column shows the number of residues for which the sidechain conformation was analysed, and the total number of residues.

Mol	Chain	Analysed	Rotameric	Outliers	Percentiles	
1	A	295/315 (94%)	291 (99%)	4 (1%)	69	62
1	B	297/315 (94%)	293 (99%)	4 (1%)	71	65
All	All	592/630 (94%)	584 (99%)	8 (1%)	69	62

All (8) residues with a non-rotameric sidechain are listed below:

Mol	Chain	Res	Type
1	A	165	ASN
1	A	191	LYS
1	A	287	ASN
1	A	289	ASN
1	B	149	ASP
1	B	180	GLU
1	B	190	ASN
1	B	289	ASN

Some sidechains can be flipped to improve hydrogen bonding and reduce clashes. All (15) such sidechains are listed below:

Mol	Chain	Res	Type
1	A	190	ASN
1	A	262	ASN
1	A	271	ASN
1	A	287	ASN
1	A	289	ASN
1	A	321	GLN
1	B	165	ASN
1	B	183	GLN
1	B	190	ASN
1	B	244	HIS
1	B	262	ASN
1	B	271	ASN
1	B	289	ASN
1	B	290	GLN
1	B	321	GLN

5.3.3 RNA [i](#)

There are no RNA molecules in this entry.

5.4 Non-standard residues in protein, DNA, RNA chains [i](#)

There are no non-standard protein/DNA/RNA residues in this entry.

5.5 Carbohydrates [i](#)

There are no carbohydrates in this entry.

5.6 Ligand geometry

Of 6 ligands modelled in this entry, 2 are monoatomic - leaving 4 for Mogul analysis.

In the following table, the Counts columns list the number of bonds (or angles) for which Mogul statistics could be retrieved, the number of bonds (or angles) that are observed in the model and the number of bonds (or angles) that are defined in the Chemical Component Dictionary. The Link column lists molecule types, if any, to which the group is linked. The Z score for a bond length (or angle) is the number of standard deviations the observed value is removed from the expected value. A bond length (or angle) with $|Z| > 2$ is considered an outlier worth inspection. RMSZ is the root-mean-square of all Z scores of the bond lengths (or angles).

Mol	Type	Chain	Res	Link	Bond lengths			Bond angles		
					Counts	RMSZ	# Z > 2	Counts	RMSZ	# Z > 2
3	ADP	A	601	2	25,29,29	1.36	2 (8%)	25,45,45	2.61	3 (12%)
4	NAT	A	801	-	21,21,21	2.22	6 (28%)	29,29,29	2.51	10 (34%)
3	ADP	B	602	2	25,29,29	1.35	2 (8%)	25,45,45	2.65	3 (12%)
4	NAT	B	802	-	21,21,21	2.22	6 (28%)	29,29,29	2.56	12 (41%)

In the following table, the Chirals column lists the number of chiral outliers, the number of chiral centers analysed, the number of these observed in the model and the number defined in the Chemical Component Dictionary. Similar counts are reported in the Torsion and Rings columns. '-' means no outliers of that kind were identified.

Mol	Type	Chain	Res	Link	Chirals	Torsions	Rings
3	ADP	A	601	2	-	0/12/32/32	0/3/3/3
4	NAT	A	801	-	-	0/11/27/27	0/2/2/2
3	ADP	B	602	2	-	0/12/32/32	0/3/3/3
4	NAT	B	802	-	-	0/11/27/27	0/2/2/2

All (16) bond length outliers are listed below:

Mol	Chain	Res	Type	Atoms	Z	Observed(Å)	Ideal(Å)
3	A	601	ADP	PB-O3A	-3.65	1.54	1.60
3	B	602	ADP	PB-O3A	-3.41	1.54	1.60
3	A	601	ADP	C5-N7	-2.44	1.31	1.39
3	B	602	ADP	C5-N7	-2.43	1.31	1.39
4	A	801	NAT	C18-C11	2.09	1.53	1.49
4	B	802	NAT	C18-C11	2.13	1.53	1.49
4	A	801	NAT	C7-C12	2.14	1.53	1.51
4	B	802	NAT	C7-C12	2.21	1.53	1.51
4	A	801	NAT	C14-C12	3.29	1.53	1.47
4	B	802	NAT	C14-C12	3.31	1.53	1.47
4	A	801	NAT	C9-N10	3.32	1.40	1.36

Continued on next page...

Continued from previous page...

Mol	Chain	Res	Type	Atoms	Z	Observed(Å)	Ideal(Å)
4	B	802	NAT	C9-N10	3.32	1.40	1.36
4	A	801	NAT	C11-C12	3.41	1.39	1.35
4	B	802	NAT	C11-C12	3.42	1.39	1.35
4	B	802	NAT	C9-N8	7.06	1.40	1.33
4	A	801	NAT	C9-N8	7.10	1.40	1.33

All (28) bond angle outliers are listed below:

Mol	Chain	Res	Type	Atoms	Z	Observed(°)	Ideal(°)
3	B	602	ADP	N3-C2-N1	-12.02	118.58	128.86
3	A	601	ADP	N3-C2-N1	-11.86	118.71	128.86
4	B	802	NAT	C18-C11-C12	-6.06	121.57	127.63
4	A	801	NAT	C18-C11-C12	-5.82	121.81	127.63
4	B	802	NAT	C9-N10-C11	-4.76	121.01	123.84
4	A	801	NAT	C9-N10-C11	-4.57	121.12	123.84
4	A	801	NAT	C2-C7-C12	-2.98	108.98	112.87
4	A	801	NAT	O19-C14-C12	-2.60	119.84	125.21
4	B	802	NAT	O19-C14-C12	-2.53	119.99	125.21
4	A	801	NAT	S20-C9-N10	-2.42	118.98	122.06
4	B	802	NAT	C2-C7-C12	-2.42	109.71	112.87
4	B	802	NAT	S20-C9-N8	-2.37	119.75	122.69
4	B	802	NAT	C2-C7-N8	-2.35	108.20	110.81
4	B	802	NAT	C16-O15-C14	-2.16	112.69	116.52
4	B	802	NAT	S20-C9-N10	-2.12	119.36	122.06
4	A	801	NAT	C2-C7-N8	-2.11	108.47	110.81
3	A	601	ADP	C4'-O4'-C1'	2.02	111.94	109.83
3	B	602	ADP	C4'-O4'-C1'	2.07	111.99	109.83
3	B	602	ADP	O5'-PA-O1A	2.40	118.45	109.07
3	A	601	ADP	O5'-PA-O1A	2.44	118.60	109.07
4	A	801	NAT	C18-C11-N10	3.47	117.59	113.48
4	B	802	NAT	C18-C11-N10	3.62	117.76	113.48
4	A	801	NAT	O15-C14-C12	3.65	118.76	112.30
4	B	802	NAT	O15-C14-C12	3.65	118.77	112.30
4	B	802	NAT	C12-C7-N8	4.33	112.60	109.11
4	A	801	NAT	C12-C7-N8	4.34	112.61	109.11
4	A	801	NAT	N10-C9-N8	6.26	120.75	116.20
4	B	802	NAT	N10-C9-N8	6.45	120.89	116.20

There are no chirality outliers.

There are no torsion outliers.

There are no ring outliers.

2 monomers are involved in 2 short contacts:

Mol	Chain	Res	Type	Clashes	Symm-Clashes
4	A	801	NAT	1	0
4	B	802	NAT	1	0

5.7 Other polymers [i](#)

There are no such residues in this entry.

5.8 Polymer linkage issues [i](#)

There are no chain breaks in this entry.

6 Fit of model and data [i](#)

6.1 Protein, DNA and RNA chains [i](#)

EDS was not executed - this section is therefore empty.

6.2 Non-standard residues in protein, DNA, RNA chains [i](#)

EDS was not executed - this section is therefore empty.

6.3 Carbohydrates [i](#)

EDS was not executed - this section is therefore empty.

6.4 Ligands [i](#)

EDS was not executed - this section is therefore empty.

6.5 Other polymers [i](#)

EDS was not executed - this section is therefore empty.